

Overall treatment outcome – analysis of long-term results of rectal cancer treatment on the basis of a new parameter

Michał Jankowski^{1,2}, Dariusz Bała^{1,2}, Manuela Las-Jankowska^{1,3}, Wojciech Maria Wysocki^{4,5,6}, Tomasz Nowikiewicz^{1,7}, Wojciech Zegarski^{1,2}

¹Chair of Surgical Oncology, Ludwik Rydygier Collegium Medicum in Bydgoszcz, Nicolaus Copernicus University in Torun, Poland

²Department of Surgical Oncology, Oncology Center – Prof. Franciszek Łukaszczyk Memorial Hospital, Bydgoszcz, Poland

³Department of Clinical Oncology, Oncology Center – Prof. Franciszek Łukaszczyk Memorial Hospital, Bydgoszcz, Poland

⁴Department of General, Oncological and Vascular Surgery, 5th Military Clinical Hospital, Krakow, Poland

⁵Chair of Surgery, Faculty of Medicine and Health Sciences, Andrzej Frycz Modrzewski Krakow University, Krakow, Poland

⁶National Institute of Oncology, Maria Skłodowska-Curie Memorial, Scientific Editorial Office, Krakow, Poland

⁷Department of Breast Cancer and Reconstruction Surgery, Oncology Center – Prof. Franciszek Łukaszczyk Memorial Hospital, Bydgoszcz, Poland

Corresponding author:

Michał Jankowski MD, PhD
Department of Surgical
Oncology
Oncology Center –
Prof. Franciszek Łukaszczyk
Memorial Hospital
8 Gminna St
86-005 Trzciniec, Poland
E-mail:
michaljankowski@post.pl

Submitted: 26 May 2017

Accepted: 12 November 2017

Arch Med Sci 2020; 16 (4): 825–833

DOI: <https://doi.org/10.5114/aoms.2020.94330>

Copyright © 2020 Termedia & Banach

Abstract

Introduction: Outcomes of rectal cancer treatment depend on preoperative staging and the effectiveness of treatments. According to disease staging, different variants of combined therapy (surgery, chemo- and radiotherapy) are used. Available parameters such as overall survival rates and disease-free survival rates as well as the presence of recurrence are inaccurate and should be jointly considered.

Material and methods: Data from 138 patients with rectal cancer (I–III WHO), who were radically operated on in the period 2001–2004 in Bydgoszcz Oncology Centre were analysed. Among this group 84 patients were radically operated on one week after preoperative radiotherapy 5 × 5 Gy (sRT). We established a new parameter, the overall treatment outcome (OTO), based on the finding that there was no recurrence (local recurrence, distant metastases) of the disease within 5 years, which is generally considered a good result for the treatment of rectal cancer.

Results: Among all patients ($n = 138$) and patients following sRT ($n = 84$) 7.4%...5.9% local recurrence and 24%...29% distant metastases were observed in 5-year follow-up. Recurrence was found in 30% and 31% of patients, respectively. Analysis of results on the basis of the OTO parameter demonstrated that among all groups of patients a worse treatment outcome is related to the number of lymph nodes involved, pN, pT, cancer stage (WHO) and to pN and patient age in the sRT group ($p < 0.005$).

Conclusions: In using a combined therapy, it is possible to optimise rectal cancer treatment outcomes. The OTO parameter is a useful tool for defining these results of cancer combination treatment.

Key words: rectal cancer, treatment outcomes, combined therapy.

Introduction

Rectal cancer has one of the highest dynamic rates of increase of malignant neoplasm incidence. Although in the last 30 years there has been an improvement in 5-year survival rates by around 30%, still around 40% of patients do not survive this period of time [1–3]. Patient prognosis deteriorates with cancer staging. Relative 5-year survival in patients with locoregional disease (circa 37% of patients) and dissemination (c. 20%) amounts to c. 70% and 12% [1–5], respectively. Effective rectal cancer treatment is a combination of treatments and based on the use of radiotherapy, chemotherapy and state-of-the-art surgical techniques.

The assessment and comparison of treatment results is a basic problem which all researchers face in attempting to define the patients' chances of survival. Available parameters such as overall survival (OS) and disease-free survival (DFS), as well as the presence of recurrence, are inaccurate and should be jointly considered. This is a problem specifically affecting cancer patients as the severity and number of complications in cancer treatment can significantly influence the treatment outcome. In cancer patients, the most desirable treatment outcome is long-term DFS. In this paper we present a new parameter, with the help of which we analysed the results of radical rectal cancer treatment.

Material and methods

The study group

Data from 138 patients with rectal cancer (WHO classification: TNM stage I–III) were used; these patients underwent radical surgical procedures at Bydgoszcz Oncology Centre between 2001 and 2004. Seven individual surgeons were involved and preparations were evaluated by five individual pathologists. All patients underwent

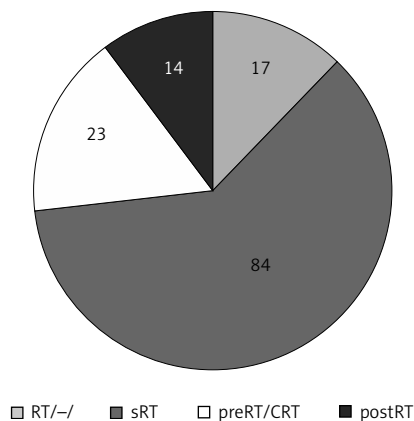


Figure 1. Radiotherapy performed in the study group ($n = 138$)

surgery using the total mesorectal excision (TME) technique. In the majority of cases, radiotherapy was also performed (Figure 1).

In this group, 84 patients underwent a short course of 5×5 Gy preoperative radiotherapy (sRT). This type of radiotherapy was used in cases with resectable tumours identified in preoperative examinations. All patients received outpatient follow-up examinations at Bydgoszcz Oncology Centre. Patients' follow-ups lasted at least 5 years; patient profiles are presented in Table I.

Overall survival and disease-free survival

Overall survival and DFS rates were determined for all patients. At 60 months following surgery, 64% and 65% of patients respectively were subject to follow-up monitoring (Table II).

Overall treatment outcome

No disease recurrence within 5 years is generally considered a successful result in the treatment of colorectal cancer. Patient outcomes can therefore be assessed depending on the presence or absence of symptoms measured on a dichotomous scale (0 – parameter has not occurred, 1 – parameter has occurred):

- recurrence (0 – no, 1 – yes),
- the presence of metachronous metastases (0 – no, 1 – yes),
- OS less than 5 years (0 – no, 1 – yes),
- DFS less than 5 years (0 – no, 1 – yes).

Optimum patient outcome would be the non-occurrence of the aforementioned symptoms (all values are zero), whereas the worst patient outcome would be the occurrence of all of the above symptoms (value = 4). In order to assess each patient's treatment effectiveness, a standard mathematical formula can be devised:

$$OWL = \frac{\sum_{i=1}^4 oc_i}{4}$$

where oc_i is a dichotomous assessment of an individual's symptoms occurrence. On the basis of the above formula, a new parameter was established: overall treatment outcomes (OTO) lower case can now be measured in values such as 0, 0.25, 0.5, 0.75, and 1. A good outcome therefore (OTO) is 0, with values ranging from 0.25 to 1.0 considered as bad results. Based on data assessed in our study, relevant values for OTO were ascribed to all patients.

In analysing patient groups and assessing the usefulness of OTO, the following statistical methods were applied:

- Kaplan-Meier survival curves,

Table I. Patient data ($n = 138$) including patients who underwent short course 5×5 Gy preoperative radiotherapy ($n = 84$)

Variables	All patient ($n = 138$)	Patients who underwent short course 5×5 Gy preoperative radiotherapy ($n = 84$)
Gender, n (%):		
Female	64 (46)	36 (43)
Male	74 (54)	48 (57)
Age at surgery [years], median (range)	62.35 (35–86)	63.1 (35–86)
Place of residence, n (%):		
Rural	46 (33)	30 (36)
Urban	92 (67)	54 (64)
Total hospital stay [days], median (range)	16.8 (4–56)	17.1 (9–56)
Post-operative hospital stay [days], median (range)	12.5 (5–55)	13.5 (6–55)
Type of surgical procedure, n (%):		
AR	72 (52)	34 (40)
APR	62 (45)	46 (55)
HR	4 (3)	4 (5)
Operation time [min], median (range):		
AR	150 (90–295)	150 (90–295)
APR	195 (115–250)	190 (115–250)
HR	240 (125–480)	240 (125–480)
In total	170 (90–480)	175 (100–480)
Location of the tumour, relative to the peritoneal pouch, n (%):		
Above	37 (27)	19 (23)
Below	80 (58)	52 (62)
Not stated	21 (15)	13 (15)
Distance from the pectinate line [cm], median (range)	6.4 (1–15)	5.7 (1–15)
Number of lymph nodes found, median (range)	11.1 (1–29)	11.3 (2–29)
Cancer stages (pTNM 2000), n (%):		
I	36 (26)	19 (22)
II	29 (21)	18 (22)
III	73 (53)	47 (56)
Perioperative complications (30 days), n (%)	38 (27)	21 (25)
Re-operation, n (%)	11 (8)	7 (8.3)
Anastomotic dehiscence requiring re-operation, n (%)	4 (5.5)	2 (5.8)
Post-operative chemotherapy, n (%)	62 (45)	49 (58)
Perioperative deaths – 30 days, n (%)	2 (1.4)	1 (1.2)

AR – anterior resection, APR – abdominoperineal resection, HR – Hartmann resection.

Table II. Disease recurrence and overall survival (OS) rates after 5 years

Parameter	All patient (n = 138)	Patients who underwent short course 5 × 5 Gy preoperative radiotherapy (n = 84)
Local recurrence (LR)	13 (9.4%)	5 (5.9%)
Distant metastases (DM)	35 (25%)	25 (29%)
Neoplastic process recurrence (LR, LR + DM, DM)	42 (30%)	26 (31%)
Follow-up monitoring after 5 years (OS)	88 (64%)	55 (65%)

Table III. Patient outcomes by radiotherapy type

Outcomes	N	Local recurrence, n (%)	Distant metastases, n (%)
Preoperative radiotherapy:			
Short course 5 × 5 Gy (sRT)	84	5 (5.9)	24 (29)
Long-term radiotherapy or radiochemotherapy (pre-RT/CRT)	23	3 (13)	3 (13)
Postoperative radiotherapy (post-RT)	14	0	2 (14)
Without radiotherapy	17	5 (29)	3 (18)
In total	138	13 (9.4)	35 (25)

- parametric test for two fractions,
- Snedecor *F*-test,
- Z-test,
- parametric tests: Student's *t*-test, Cochran-Cox test,
- χ^2 non-parametric test of independence, χ^2 test with Yates correction (Fisher's exact test),
- non-parametric Shapiro-Wilk test, Mann-Whitney test.

The significance level in analyses was 0.05 (a statistically significant difference was $p < 0.05$ – ss, in cases where $p > 0.005$ – ns (not significant)).

Results

Among patients who underwent radical rectal cancer resection between 2001 and 2004, local recurrence (LR) and distant metastases (DM) were diagnosed in 9.4% and 25% of patients, respectively. Local recurrence less frequently affected patients treated with sRT (5.9%). Other groups included too few patients and those who were not subjected to analysis.

The highest rate of LR was in patients who were not treated with radiotherapy. This group was very heterogeneous, and combined therapy was not used for a number of reasons such as prior pelvic irradiation, comorbidities, and lack of patient written consent, amongst others.

All patient groups in which DM was diagnosed showed variation in the rate of occurrence. In the two largest groups of patients (all patients: $n = 138$; sRT group: $n = 84$), the percentage incidence of DM occurrence was similar (Table III).

In all groups including patients subject to sRT, the survival probability estimates using the Kaplan-Meier method were similar (Figure 2 A, B).

Analysis of results on the basis of the OTO parameter demonstrated that in all patients a worse treatment outcome was related to the presence and number of metastatically affected lymph nodes in histopathological preparation (N parameter) together with the depth of invasion of the primary tumour beyond the rectum wall (T parameter) (Table IV).

Among sRT patients, the absence and lower number of metastatically affected lymph nodes (N parameter) was statistically significant for a good outcome (OTO = 0), similarly with a younger patient age at the time of surgery.

Discussion

The results of cancer treatment are traditionally measured in relation to OS rates and DFS rates within 5 years. The greatest impact on the successful treatment of patients with malignant neoplasms is the avoidance of cancer recurrence in the form of LR and DM.

It should be noted that OS rates, especially in the elderly, are affected by comorbidities, complications following treatment and general health.

Due to the specific nature of the OTO parameter its assessment is based on four elements, i.e., local recurrence, distant metastases, 5-year DFS and OS.

Treatment results

An LR following surgical treatment for rectal cancer significantly worsens the patient's prog-

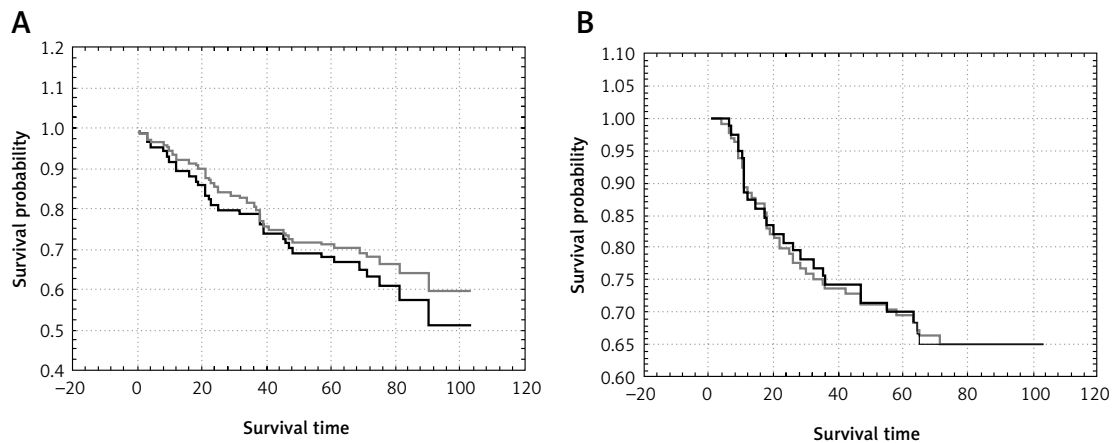


Figure 2. Survival probability estimates according to the Kaplan-Meier method: all patients ($n = 138$, black line), patients following sRT ($n = 84$, grey line). **A** – overall survival rate (OS), **B** – disease free survival rate (DFS)

nosis [6]. The number of recurrences following resection of colorectal cancer may vary from 3.7% to 50% [7, 8], and their treatment is frequently ineffective [4, 9]. A reduction in the LR rate may be achieved by using a relevant technique of resection of the rectum and pre- or postoperative radiotherapy [10, 11].

Application of appropriate surgical techniques is conditional upon factors such as preserving the radial margin, and resection by TME [12–14].

In the Swedish Rectal Cancer Trial study, owing to the use of pre-sRT, a lower rate of LR (11%) was observed in comparison to patients who solely underwent surgery (27%) [15, 16]. It should be noted, however, that surgical procedures in this study were not standardised, and not all patients underwent TME.

In the Dutch Colorectal Study Group, TME was performed on 1,805 patients with resectable rectal cancer. In patients subject to sRT, 2.4% LR was observed, compared to 8.2% among patients who were subject to non-combination treatment [17].

In our study, LR were found in 13 patients (9.4%). Among patients who were subject to sRT, LR were observed in 5 patients (5.9%), whereas in the group treated with pre RT/CRT, LR was diagnosed in 3 patients (13%), and these rates are similar to the results reported earlier [18, 19].

Treatment results – distant metastases

The emergence of DM is the major adverse prognostic factor in patients with malignancies. The development of DM following radical treatment of rectal cancer is observed in 30–60% of patients, with the most common locations being the liver and lungs [20]. The OS rate of these patients is much lower and radical treatment options are limited.

During clinical observations, the prognostic significance of multiple factors in the development

of DM in patients following radical resection of rectal cancer was confirmed, especially in the primary cancer stage [21], but studies are still ongoing [22, 23]. Moreover, the presence of a local recurrence affects the incidence rate of DM [24]. The role played by lymph node condition and the size of the radial margin was also observed [25].

However, large meta-analyses failed to confirm a reduction in the incidence of DM when subjected to radiotherapy [18].

In our study group 35 (25%) patients under observation developed DM, of whom 26 (80%) subsequently died. Among patients who underwent sRT the DM rates were very similar, i.e., 29% and 76%, respectively. These statistics are similar to those reported elsewhere in the literature [2, 3, 5].

Overall survival

Recurrence is the major factor affecting long-term survival of patients following the radical treatment of malignant neoplasms. Other factors, discussed in this paper, are also crucial; these are comorbidities, complications during treatment, or the patient's age. Owing to state-of-the-art techniques such as TME, radiotherapy and perioperative care improvement, the rate of 5-year survival for patients with rectal cancer has increased in the last 20 years, from 48% [15] to over 60% [26].

The impact of radiation therapy on survival extension has not been adequately assessed. Previously published results indicate survival extension [15, 18], but also conversely the absence of this correlation [27, 28].

In recent years research studies have been published which demonstrate the improvement in survival rates of patients treated for rectal cancer, which indirectly demonstrates the increasing effectiveness of combined treatment [29–31].

In our study, 64% of patients survived 5 years (OS), with the rate for patient who underwent

Table IV. The impact of selected factors on the overall treatment outcome (OTO)

Parameter	All patient (n = 138)			Patients who underwent short course 5 × 5 Gy preoperative radiotherapy (n = 84)		
	OTO = 0	OTO > 0	P-value	OTO = 0	OTO > 0	P-value
Age at surgery [years], median (SD)	60.3 (11.4)	63.4 (13)	0.14	60.9 (9.7)	65.6 (9.5)	< 0.03
Gender, n (%):						
Both			0.15			0.89
Female	31 (40.8)	33 (59.2)		19 (54.8)	17 (47.2)	
Male	45 (60.8)	29 (39.2)		26 (52.8)	22 (45.8)	
Distance from the pectinate line [cm], median (SD)	6.81 (4.25)	5.87 (4.12)	0.19	6.16 (4.2)	5.23 (3.73)	0.23
Location relative to the peritoneal pouch, n (%):						
Total			0.39			0.86
Below	43 (53.7)	37 (46.3)		29 (55.8)	23 (44.2)	
Above	23 (62.2)	14 (37.8)		11 (57.9)	8 (42.1)	
Type of surgical procedure, n (%):						
Total			0.37			0.22
AR	42 (58.3)	32 (41.7)		22 (47.8)	24 (52.2)	
APR	30 (51.6)	30 (48.4)		21 (61.8)	13 (38.2)	
Perioperative complications (30 days), n (%):						
Total			0.61			0.37
Yes	15 (60)	10 (40)		10 (45.4)	12 (54.6)	
No	61 (54)	52 (46)		35 (56.4)	27 (43.6)	
Re-operation, n (%):						
Total			0.94			0.84
Yes	6 (54.5)	5 (45.5)		4 (57.1)	3 (42.9)	
No	70 (55.1)	57 (44.9)		41 (53.2)	36 (46.7)	
N parameter according to pTNM classification, n (%):						
Total			0.006			< 0.04
N0	42 (64.6)	23 (35.4)		25 (67.6)	12 (32.4)	
N1	22 (50)	22 (50)		13 (50)	13 (50)	
N2	12 (41.4)	17 (58.6)		7 (33.3)	14 (66.7)	
N1/N2						0.022
N0/N2			0.035			0.01
T parameter according to pTNM classification, n (%):						
T3/T1–2			0.0701			0.44
T3–4/T1–2			0.0304			0.4
T1	3 (75)	1 (25)		2 (100)	0	
T2	37 (63.8)	21 (36.2)		19 (57.6)	14 (42.4)	
T3	30 (48.4)	32 (51.6)		21 (51.2)	20 (48.8)	
T4	3 (30)	7 (70)		2 (28.6)	5 (71.4)	

Table IV. Cont.

Parameter	All patient (n = 138)		P-value	Patients who underwent short course 5 × 5 Gy preoperative radiotherapy (n = 84)		
	OTO = 0	OTO > 0		OTO = 0	OTO > 0	P-value
Cancer stage, n (%):						
I/III			0.045			0.053
I	24 (66.7)	12 (33.3)		13 (68.4)	6 (31.6)	0.07
II	18 (62.1)	11 (37.9)		12 (66.7)	6 (33.3)	
III	34 (46.6)	39 (53.4)		20 (42.6)	27 (57.4)	
Number of lymph nodes found, median (SD)	109 (7.27)	11.1 (6.35)	0.87	45 (10.29)	39 (12.64)	0.11
Number of lymph nodes involved	1.7 (2.57)	34 (4.83)	0.009	45 (1.6)	39 (4.59)	< 0.0001

sRT being 65%. These results are similar to those found elsewhere in the literature [32–34].

Disease-free survival

The use of radiotherapy in rectal cancer treatment reduces the risk of LR improving patients' chance for longer DFS. In the Colorectal Cancer Collaborative Group's meta-analysis, neoadjuvant radiotherapy combined with surgical procedures, when compared to a surgical procedure alone, confirmed its importance in extending cause-specific survival (CSS) [27]. Cammà's meta-analysis yielded similar results [18].

When comparing preoperative and postoperative radiotherapy, it appears that a slightly higher rate of DFS can be achieved in cases of neoadjuvant treatment [19].

In our study, we found a 57% rate for 5-year DFS. In stages I, II, and III (WHO classification), the DFS rates were 70%, 62% and 49%, respectively. Among patients in stages I, II and III, who underwent preoperative radiotherapy, a rate of 57% for 5-year DFS was reported with rates of 74%, 67% and 47%, respectively; these results were slightly better than rates in the study group overall.

Age

The influence of age in patients with rectal cancer during treatment is quite frequently discussed in the literature. The risk of developing this cancer increases with age [1], and with the population's rising median age, the occurrence increases accordingly.

Many researchers believe that developing rectal cancer over 80 years of age does not diminish the chances of curing the disease following radical surgery. The overall perioperative mortality rate and 5-year OS rate are lower than in younger patients [35, 36].

Similarly, cancer in patients over 65 years of age does not markedly change the short-term disease prognosis, although in this age group 5-year OS and 5-year DFS rates are lower [37, 38].

In our study, younger age was conducive to a good OTO in patients subject to sRT.

Metastases to lymph nodes

Metastases to lymph nodes are widely considered to be a poor prognostic factor in malignant neoplasms.

The presence of metastatically affected lymph nodes is the basis for the differentiation of cancer stages classified as N0 – N1 – N2, depending on the number of lymph nodes involved [39]. According to the WHO classification of colorectal cancer, patients with metastases in regional lymph nodes are classified as having stage III cancer. It is considered that rectal cancer has a greater ability to form metastases in regional lymph nodes than colon cancer [40].

Tang *et al.* reported 538 cases of patients with stage III rectal cancer who underwent surgery between 1980 and 1989. The relative 5-year and 10-year survival rates were 52% and 42%, respectively. They compared the number of metastatically affected lymph nodes and thus determined a statistically significant correlation with relative survival rates [41].

Suzuki *et al.* reported 118 cases of patients with stage III colon cancer. When relating 5-year survival rates to the number of metastatically affected lymph nodes they considered it to be an independent prognostic factor [42].

Our analysis of patients' data showed a statistically significant correlation between the presence and number of metastases relative to regional lymph nodes and treatment outcomes (OTO). This correlation occurred both in the overall group of patients ($n = 138$) and patients undergoing 5 × 5 Gy preoperative radiotherapy ($n = 84$).

Local staging

Local staging (T parameter in WHO classifications) is a recognised prognostic factor, even though its significance is less than that of the presence of metastases in regional lymph nodes (N).

Yalman *et al.* analysed long-term treatment results in 290 patients with rectal cancer between 1990 and 2005, who underwent postoperative radiotherapy (50.4 Gy). The factors which most significantly influenced OS and DFS were the number of affected lymph nodes (pN) and the depth of invasion of the primary tumour (pT) [43].

In our study group ($n = 138$), local stage (T) was an important factor affecting the OTO parameter. This impact had not been observed in the subgroup of patients following sRT, which may indirectly suggest the importance of this component in the combined treatment.

In conclusion, our analysis of treatment results using the OTO parameter was consistent with those described in the literature [44]. There were statistical correlations with respect to factors such as age, the presence and number of lymph nodes involved, or local staging, and their impact on OTO.

We believe that the OTO parameter is a useful tool for assessing the effectiveness of cancer combined therapy.

Although patient groups cannot be directly compared, attention should be paid to differences manifest in the analysis of OTO. In the group of patients who underwent sRT, an individual's greater age was an unfavourable factor which may indicate a lower tolerance for this kind of treatment as well as increasing the incidence of death from causes other than cancer [26].

In the group of patients who underwent radiotherapy, local stage (T parameter according to TNM) and the number of lymph nodes involved had a smaller, statistically insignificant impact on the OTO; this implicitly proves the local effectiveness of this form of treatment.

The introduction of this new OTO parameter allows fast analysis and comparison of treatment results. This approach may prove essential both in searching for prognostic factors and in finding homogeneous groups with similar prognoses, with an overall aim of defining predictive factors.

Conflict of interest

The authors declare no conflict of interest.

References

1. U.S. National Cancer Institute Surveillance, Epidemiology and End Results (SEER) Program. U. S. National Cancer Institute. Available at: <http://www.seer.cancer.gov/> [Accessed: 14.08.2017].
2. Iversen LH, Green A, Ingeholm P, Østerlind K, Gøge-nur I. Improved survival of colorectal cancer in Denmark during 2001-2012 – the efforts of several national initiatives. *Acta Oncol* 2016; 9: 1-14.
3. Elferink MA, Krijnen P, Rutgers MW, et al. Variation in treatment and outcome of patients with rectal cancer by region, hospital type and volume in the Netherlands. *Eur J Surg Oncol* 2010; 36 (Suppl): S74-82.
4. Morris EJ, Sandin F, Lambert PC, et al. A population-based comparison of the survival of patients with colorectal cancer in England, Norway and Sweden between 1996 and 2004. *Gut* 2011; 60: 1087-93.
5. Tiefenthal M, Nilsson PJ, Johansson R, Glimelius B, Pählman L. The effects of short-course preoperative irradiation on local recurrence rate and survival in rectal cancer: a population-based nationwide study. *Dis Colon Rectum* 2011; 54: 672-80.
6. Pollett WG, Nicholls RI. The relationship between the extent of distal clearance and survival and local recurrence rates after curative anterior resection for carcinoma of the rectum. *Ann Surg* 1983; 198: 159-63.
7. Eu KW, Seow-Choen F, Ho JM, Ho YH, Leong PK. Local recurrence following rectal resection for cancer. *J R Coll Surg Edinb* 1998; 43: 393-6.
8. Killingback M, Barron P, Dent OF. Local recurrence after curative resection of cancer of the rectum without total mesorectal excision. *Dis Colon Rectum* 2001; 44: 473-83.
9. Cohen AM, Minsky BD. Aggressive surgical management of locally advanced primary and recurrent rectal cancer. *Dis Colon Rectum* 1990; 33: 432-8.
10. Inoue Y, Kusunoki M. Resection of rectal cancer: a historical review. *Surg Today* 2010; 40: 501-6.
11. Rutkowski A, Nowacki MP, Chwalinski M, et al. Acceptance of a 5-mm distal bowel resection margin for rectal cancer: is it safe? *Colorectal Dis* 2012; 14: 71-8.
12. Heald RJ, Ryall RDH. Recurrence and survival after total mesorectal excision for rectal cancer. *Lancet* 1986; 1: 1479-82.
13. Heald RJ, Karanja ND. Results of radical surgery for rectal cancer. *World J Surg* 1992; 16: 848-57.
14. Bębenek M, Tupikowski W, Cisarż K, et al. Preoperative treatment does not improve the therapeutic results of abdominosacral amputation of the rectum. *World J Surg* 2012; 36: 1686-92.
15. Swedish Rectal Cancer Trial, Cedermark B, Dahlberg M, Glimelius B, Pählman L, Rutqvist LE, Wilking N. Improved survival with preoperative radiotherapy in resectable rectal cancer. *N Engl J Med* 1997; 336: 980-7.
16. Initial report from a Swedish multicentre study examining the role of preoperative irradiation in the treatment of patients with resectable rectal carcinoma. *Swedish Rectal Cancer Trial. Br J Surg* 1993; 80: 1333-6.
17. Kapiteijn E, Marijnen CA, Nagtegaal ID, et al.; Dutch Colorectal Cancer Group. Preoperative radiotherapy combined with total mesorectal excision for resectable rectal cancer. *N Engl J Med* 2001; 345: 638-46.
18. Cammà C, Giunta M, Fiorica F, Pagliaro L, Craxi A, Cottone M. Preoperative radiotherapy for resectable rectal cancer: a meta-analysis. *JAMA* 2000; 284: 1008-15.
19. Sebag-Montefiore D, Stephens JR, Steele R, et al. Preoperative radiotherapy versus selective postoperative chemoradiotherapy in patients with rectal cancer (MRC CR07 and NCIC-CTG C016): a multicentre, randomised trial. *Lancet* 2009; 373: 811-20.
20. Van Cutsem E, Nordlinger B, Adam R, et al. Towards a pan-European consensus on the treatment of patients with colorectal liver metastases. *Eur J Cancer* 2006; 42: 2212-21.

21. Zhang K, Chen Y, Huang X, et al. Expression and clinical significance of cytochrome c oxidase subunit IV in colorectal cancer patients. *Arch Med Sci* 2016; 12: 68-77.
22. Bobowicz M, Skrzypski M, Czapiewski P, et al. Prognostic value of 5-microRNA based signature in T2-T3N0 colon cancer. *Clin Exp Metastasis* 2016; 33: 765-77.
23. Köckerling F, Reymond MA, Altendorf-Hofmann A, Dworak O, Hohenberger W. Influence of surgery on metachronous distant metastases and survival in rectal cancer. *J Clin Oncol* 1998; 16: 324-9.
24. van den Brink M, Stiggelbout AM, van den Hout WB, et al. Clinical nature and prognosis of locally recurrent rectal cancer after total mesorectal excision with or without preoperative radiotherapy. *J Clin Oncol* 2004; 22: 3958-64.
25. Eriksen MT, Wibe A, Haffner J, Wiig JN; Norwegian Rectal Cancer Group. Prognostic groups in 1,676 patients with T3 rectal cancer treated without preoperative radiotherapy. *Dis Colon Rectum* 2007; 50: 156-67.
26. Peeters KC, Marijnen CAM, Nagtegaal ID, et al. The TME Trial after a median follow-up of 6 years: increased local control but no survival benefit in irradiated patients with resectable rectal carcinoma. *Ann Surg* 2007; 246: 693-701.
27. Colorectal Cancer Collaborative Group. Adjuvant radiotherapy for rectal cancer: a systematic overview of 8507 patients from 22 randomised trials. *Lancet* 2001; 358: 1291-304.
28. van Gijn W, Marijnen CA, Nagtegaal ID, et al.; Dutch Colorectal Cancer Group. Preoperative radiotherapy combined with total mesorectal excision for resectable rectal cancer: 12-year follow-up of the multicentre, randomised controlled TME trial. *Lancet Oncol* 2011; 12: 575-82.
29. den Dulk M, Krijnen P, Marijnen CA, et al. Improved overall survival for patients with rectal cancer since 1990: the effects of TME surgery and pre-operative radiotherapy. *Eur J Cancer* 2008; 44: 1710-6.
30. Nedrebø BS, Søreide K, Eriksen MT, et al. Survival effect of implementing national treatment strategies for curatively resected colonic and rectal cancer on behalf of the Norwegian Colorectal Cancer Registry. *Br J Surg* 2011; 98: 716-23.
31. Tjandra JJ, Chan MK. Follow-up after curative resection of colorectal cancer: a meta-analysis. *Dis Colon Rectum* 2007; 50: 1783-99.
32. Bujko K, Nowacki MP, Nasierowska-Guttmejer A, Michalski W, Bebenek M, Kryj M. Long-term results of a randomized trial comparing preoperative short-course radiotherapy with preoperative conventionally fractionated chemoradiation for rectal cancer. *Br J Surg* 2006; 93: 1215-23.
33. Ngan S, Fisher R, Goldstein D, et al. A randomized trial comparing local recurrence (LR) rates between short-course (SC) and long-course (LC) preoperative radiotherapy (RT) for clinical T3 rectal cancer: an intergroup trial (TROC, AGITG, CSSANZ, RACS). *J Clin Oncol* 2010; 28 (Suppl): 3509.
34. Çetin DA, Yildirim M, Yakan S, Çiyiltepe H, Aydoğan S. Effects of prognostic factors on overall and disease-free survival in patients with stage I-III colorectal cancer. *Arch Med Sci Civil Dis* 2016; 1: 131-8.
35. Barrier A, Ferro L, Houry S, Lacaine F, Huguier M. Rectal cancer surgery in patients more than 80 years of age. *Am J Surg* 2003; 185: 54-7.
36. Ferenschild FT, Dawson I, de Wilt JH, de Graaf EJ, Groenendijk RP, Tetteroo GW. Total mesorectal excision for rectal cancer in an unselected population: quality assessment in a low volume center. *Int J Colorectal Dis* 2009; 24: 923-9.
37. Bufalari A, Giustozzi G, Burattini MF, et al. Rectal cancer surgery in the elderly: a multivariate analysis of outcome risk factors. *J Surg Oncol* 2006; 93: 173-80.
38. Kerr J, Engel J, Eckel R, Hölzel D. Survival for rectal cancer patients and international comparisons. *Ann Oncol* 2005; 16: 664-72.
39. Sobin LH, Gospodarowicz MK, Wittekind C. *TNM Classification of Malignant Tumours*. 7th ed. Wiley-Blackwell; 2009.
40. Wang H, Wei XZ, Fu CG, Zhao RH, Cao FA. Patterns of lymph node metastasis are different in colon and rectal carcinomas. *World J Gastroenterol* 2010; 16: 5375-9.
41. Tang R, Wang JY, Chen JS, et al. Survival impact of lymph node metastasis in TNM stage III carcinoma of the colon and rectum. *J Am Coll Surg* 1995; 180: 705-12.
42. Suzuki O, Sekishita Y, Shiono T, Ono K, Fujimori M, Kondo S. Number of lymph node metastases is better predictor of prognosis than level of lymph node metastasis in patients with node-positive colon cancer. *J Am Coll Surg* 2006; 202: 732-6.
43. Yalman D, Demirci S, Bolukbasi Y, Caliskan C, Ozkok S. Postoperative radiotherapy in rectal cancer: long-term results of 290 patients. *Hepatogastroenterology* 2010; 57: 1099-105.
44. Glynne-Jones R, Wyrwicz L, Tiret E, et al.; ESMO Guidelines Committee. Rectal cancer: ESMO Clinical Practice Guidelines for diagnosis, treatment and follow-up. *Ann Oncol* 2017; 28 (Suppl): 22-40.