

Histopathological pattern of lymphomas and clinical presentation and outcomes of diffuse large B cell lymphoma: A multicenter registry based study from India

Ramesh B. V. Nimmagadda,
Raghunadharao Digumarti¹,
Reena Nair², Dinesh Bhurani³,
Vinod Raina⁴, Shyam Aggarwal⁵,
Shekhar Patil⁶, Pabitra K. Gogoi⁷,
Subramanian Sundaram⁸,
Chanchal Goswami⁹,
Shashikant Apte¹⁰, Srinivas
Chakravarthy¹¹, Anand Pathak¹²

Apollo Specialty Hospital, ⁸V.S. Hospital, Chennai, Tamil Nadu, ¹Nizam's Institute of Medical Sciences, ¹¹Apollo Cancer Hospital, Hyderabad, Andhra Pradesh, ²Tata Memorial Hospital, Mumbai, ¹⁰Sahyadri Speciality Hospital, Pune, ¹²Cancer Care Clinic, Nagpur, Maharashtra, ³Rajiv Gandhi Cancer Institute and Research Centre, ⁴All India Institute of Medical Sciences, ⁵Sir Ganga Ram Hospital, New Delhi, ⁶HCG Enterprises, Bengaluru, Karnataka, ⁷Guwahati Medical College Hospital, Guwahati, Assam, ⁹B. P. Poddar Cancer Hospital & Research Centre, Kolkata, West Bengal, India

Address for correspondence:

Dr. Ramesh B. V. Nimmagadda,
Apollo Specialty Hospital, 320,
Anna Salai, Chennai - 600 035,
Tamil Nadu, India.
E-mail: nimmagadda@yahoo.com

ABSTRACT

Context: The distribution of various subtypes of lymphomas in India is different from other parts of the world. There is scarce multicentric data on the pattern and outcomes of lymphomas in India. **Aims:** The aim of this study is to evaluate the histopathological and the clinical pattern and treatment outcomes of lymphomas in India based on the retrospective data collected from a multicenter registry. **Materials and Methods:** Retrospective data was collected at 13 public and private hospitals in India for patients diagnosed with lymphoma between January 2005 and December 2009. The data collection was performed in the setting of a multicenter lymphoma registry, survival analyses were performed using the Kaplan-Meier method and compared using the log-rank test. **Results:** Non-Hodgkin's Lymphoma (NHL) constituted 83.17% and Hodgkin's Lymphoma (HL) for 16.83% of the 1733 registered and analyzed cases. Diffuse large B cell lymphoma (DLBCL) was the most common NHL (55%) followed by follicular lymphoma (11%). CHOP was the most common chemotherapy regimen administered (84%) while rituximab was used in 42.7% of those with DLBCL. Survival analysis of treatment naïve DLBCL patients ($n = 791$) was performed. Of these, 29% were lost to follow-up, 20% with active disease. The median follow-up in surviving patients is 31 (range: 1-88) months. Median progression-free survival (PFS) and overall survival (OS) in DLBCL patients has not reached. There was no significant difference in median PFS (69 months vs. 61 months, $P = 0.1341$), but OS was significant not reached (NR) vs. NR, $P = 0.0012$) within international prognostic index high or intermediate subgroups. Rituximab use was associated with significantly prolonged PFS (NR vs. 82 months, $P = 0.0123$), but not OS (NR vs. NR, $P = 0.2214$). Cox regression analysis in treatment naïve DLBCL patients showed a performance status, stage and receipt of six or more cycles of chemotherapy to be significantly associated with OS and all of the preceding plus rituximab use significantly associated with PFS. **Conclusions:** Our analysis confirms previous reports of distribution of lymphoma subtypes in India and suggests that patients who are able to receive the full course of chemotherapy achieve a better outcome. This indicates the importance of ensuring compliance to treatment utilizing various measures including patient and family counseling. Prospective studies are required to confirm these findings.

Key words: Diffuse large B cell lymphoma, India, lymphoma pattern, survival

INTRODUCTION

World-wide, the incidence of non-Hodgkin's lymphoma

(NHL) is increasing faster than any non-cutaneous malignancy.^[1] Globally, NHL incidence rates vary as much as five fold and lowest rates are reported from Asia;^[2] the highest incidence rates are reported from United States and Europe. The frequency of various subtypes of NHL also differs in various regions.

National Cancer Registry Program by Indian Council of Medical Research has reported age adjusted rate (AAR) of NHL from 21 cities and towns. Highest AAR is from Imphal (6.8/100000) and lowest from Barshi (1.8/100000).^[3] The

Access this article online

Quick Response Code:



Website:
www.ijmpo.org

DOI:
10.4103/0971-5851.125250

pattern of NHL in India was first reported from AIIMS, New Delhi, India and showed that high grade lymphoma was the most common subtype (44.2%) followed by intermediate (39%) and low grade lymphomas (12.2%).^[4] A single center study reported the distribution and clinicopathological characteristics of adult NHL presenting over a 1 year period.^[5] B- and T-cell NHL constituted 79.3% and 18.8% of cases respectively and diffuse large B cell lymphoma (DLBCL) was the most common subtype (50.2%). Lower frequencies of follicular lymphoma (FL), marginal zone lymphoma, mantle cell lymphoma (MCL), peripheral T-cell lymphoma-not otherwise specified (PTCL-NOS) and extranodal NK/T-cell lymphoma were seen compared with other Asian countries while higher frequencies of DLBCL and precursor T-lymphoblastic leukemia/lymphoma were noted. Extranodal and bone marrow involvement in MCL and PTCL-NOS were less frequent. Although these and other Indian studies^[5-7] indicate differences in clinical and histopathological patterns of lymphomas in India, the data is limited and not nationally representative, especially with respect to the outcomes of treatment.

A Lymphoma Registry was established to understand the clinical, pathological and treatment patterns in lymphoma patients presenting to collaborating centers and their long-term outcomes. This is the first report of this registry that especially emphasizes the results in patients with DLBCL.

MATERIALS AND METHODS

Registry

The Lymphoma Registry was formed in August 2010 by 13 oncology institutions/hospitals in India [Figure 1] belonging both to public and private sectors. This enabled data to be collected on a continuum of socio-economic strata from low to high. The registry centers were distributed across various regions of the country and collectively likely to be

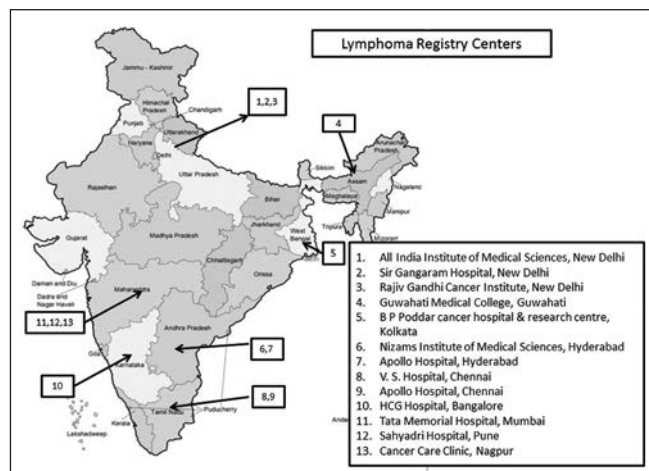


Figure 1: Lymphoma registry centers

representative of the Indian population. The objectives of establishing the registry were to study the clinical and pathological patterns and treatment outcomes of lymphoma patients in India. The data for this registry was collected using a proprietary Access Based Software (R Lymph 20) Priya Venkatesikan, The Registrar of Trade Mark. This software was developed and managed by the lead author and Principal Investigator of the Registry. Data elements were included in the software in order to logically collect information on demographic characteristics, histopathological subtype, stage, treatment regimen, survival and important adverse effects in lymphoma patients. The collaborating centers/investigators provided important feedback prior to finalization of the software.

Data collection

Retrospective data collection was undertaken by assessment of medical case records of lymphoma patients treated at each registry center from January 2005 to December 2009. The data of all patients who had received at least one cycle of chemotherapy for newly diagnosed lymphoma was collected and that of patients who had received prior chemotherapy was not included.

Study design and analysis

This is a retrospective analysis of patients diagnosed and treated with lymphomas at the collaborating centers of the registry from January 2005 to December 2009. The primary analyses are descriptive reports of the clinical and pathological characteristics of the patients and their tumors and survival outcomes in those with DLBCL. Survival analyses were performed using the Kaplan-Meier method and compared using the log-rank test. Cox regression analysis was used to compare the effect of various factors on survival in a multivariate model. Patients were censored at the time of their last follow-up date. Progression free survival (PFS) was defined as the time interval from diagnosis until disease progression or relapse and overall survival (OS) was defined as the time interval from diagnosis until death. MedCalc, Medcalc Software, bvba, Belgium, and NCSS statistical packages were used for analysis.

The study was conducted after approval by respective institutional/independent ethics committees as applicable.

RESULTS

Patterns of lymphomas

From October 2010 to June 2012, data was collected on 1723 lymphoma patients who were treated between January 2005 and December 2009 at 13 centers across India. There were 290 (16.83%) Hodgkin's lymphomas (HL) and 1433 (83.16%) NHL. The most common pathological subtypes

of NHL were DLBCL (55%) and FL (11%). The other noteworthy subtypes of NHL were anaplastic lymphoma (3%), PTCL (2.7%), Burkitt's lymphoma (2.5%) and MCL (1.8%) [Table 1].

DLBCL

The data of DLBCL patients in the registry is separately reported here. Other lymphoma subtype data will be reported in subsequent publications.

The patient characteristics are shown in Table 2. The median age was 52 years. We are only publishing here the results of patients more than 16 years of age (range: 16-92). Male to female ratio was 2:1, a majority of patients (70%) had an Eastern Cooperative Oncology Group (ECOG) performance status of 0-1, 31.1% were diagnosed with stage IV disease, 44.3% had low international prognostic index (IPI) score, 37.8% reported B symptoms at presentation, 18.3% patients had bulky disease at initial presentation and bone marrow was involved in 15.3%. Immunohistochemistry was done in 83% patients.

Treatment pattern

The standard regimen of cyclophosphamide, doxorubicin, vincristine and prednisolone (CHOP) was the most commonly prescribed treatment (84%), while 42.7% of patients received rituximab in addition to chemotherapy. The median number of chemotherapy cycles was six (range: 1-12). Data on chemotherapy dose modification was available in 88% of patients and of these dose reduction was done in 9% of patients and 12% of patients discontinued chemotherapy. Radiation therapy was given to 36% of patients.

Outcome of DLBCL patients

At a median follow-up of 31 months (range: 1-88 months), 47% of patients were alive with no evidence of disease and 8% were alive with disease. Deaths were

reported in 14% patients. Nearly 9% patients were lost to follow-up in remission and 20% were lost to follow-up with evidence of active disease at the time of the last evaluation.

Response rates

After completion of the first line therapy, 431 (55%) patients achieved a complete response (CR), 88 (11%) achieved a partial response (PR) and 203 (25%) reported not evaluated.

Table 2: Patient characteristics of DLBCL patients

Characteristic	n (%)
Age (years)	
Median	52
Range	(16-92)
No. of patients as per age	
<60 years	598 (75.6)
>60 years	193 (24.4)
Sex	
Male	531 (67.1)
Female	259 (32.7)
Ratio	2:1
Not available	1 (0.2)
B symptoms	
Absent	462 (58.4)
Present	299 (37.8)
Not available	30 (3.2)
Bone marrow	
Not involved	584 (73.8)
Involved	121 (15.3)
Not available	106 (10.9)
Bulky disease	
Absent	574 (72.6)
Present	145 (18.3)
Not available	72 (9.1)
IHC done	657 (83)
Performance status	
0	182 (23)
1	370 (46.9)
2	129 (16.3)
3	69 (8.7)
4	24 (3)
Not available	17 (2.1)
Stage	
I	140 (17.8)
II	204 (25.7)
III	170 (21.6)
IV	246 (31.1)
Not available	31 (3.8)
IPI group	
Low	350 (44.3)
Intermediate	212 (26.8)
High	194 (24.5)
Not available	35 (4.4)

DLBCL – Diffuse large B cell lymphoma; IHC – Immunohistochemistry; IPI – International prognostic index

Table 1: Distribution of subtypes of lymphoma

Type of lymphoma	n (%)
Total	1723 (100)
HL	290 (16.83)
NHL	1433 (83.16)
DLBCL	791 (55)
FL	155 (11)
Anaplastic large cell lymphoma	43 (3.0)
PTCL	38 (2.7)
Burkitt's lymphoma	36 (2.5)
MCL	26 (1.8)
Other	344 (24)*

*This included CLL 3.7%, ALL 2.1%, others (WHO) 3.3% and many others with <1% each. DLBCL – Diffuse large B cell lymphoma; CLL – Chronic lymphocytic leukemia; WHO – World Health Organization; ALL – Acute lymphoblastic leukemia; HL – Hodgkin's lymphoma; NHL – Non-hodgkin's lymphoma; FL – Follicular lymphoma; PTCL – Peripheral T cell lymphoma; MCL – Mantle cell lymphoma

Survival

The progression-free and OS in all DLBCL patients is shown in Figures 2 and 3 respectively. The median PFS and OS are not reached and the 2-year PFS and OS are 75% and 79% respectively.

Prognostic factors

In univariate analyses of PFS, age >60 years, presence of B symptoms, bone marrow involvement, poor performance status (3-4) and advanced stage (\geq III) were significant adverse factors [Table 3]. It is noteworthy that PFS in low risk IPI group patients was significantly superior to intermediate ($P = 0.0005$) and high ($P < 0.0001$) risk patients, but there was no difference between intermediate and high risk IPI patients [Figure 4]. Median PFS has not been reached in patients with Stage I and II, whereas it was 57 months in patients with Stage III and IV disease [Figure 5].

Impact of Rituximab and number of chemotherapy cycles

The median PFS has not been reached in patients who received rituximab, whereas it was 82 months in those who didn't receive this drug ($P = 0.0123$). However, this PFS benefit did not convert into prolongation of OS ($P = 0.22$). the median PFS has not been reached in patients receiving more than or equal to six chemotherapy cycles, whereas it was 42 months in those who received less than six cycles (1-5) ($P < 0.0001$).

In multivariate analysis of treatment naïve DLBCL patients, significant variables associated with adverse PFS were poor performance status, higher stage, use of less than six cycles of chemotherapy and non-use of rituximab whereas adverse prognostic factors for OS were all the preceding except rituximab non-use [Table 4].

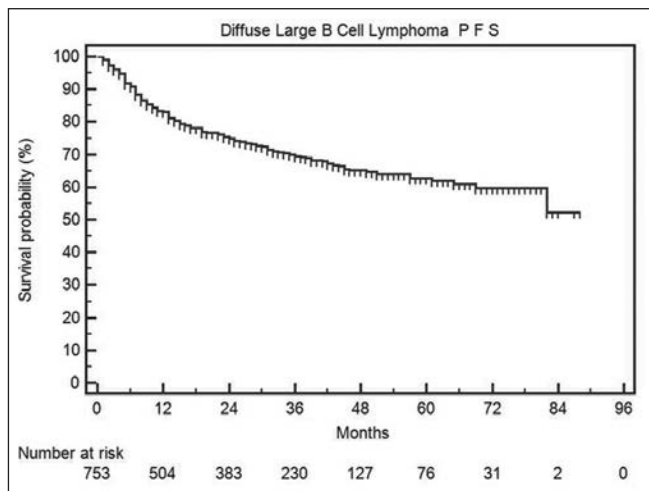


Figure 2: Progression-free survival in all diffuse large B cell lymphoma patients

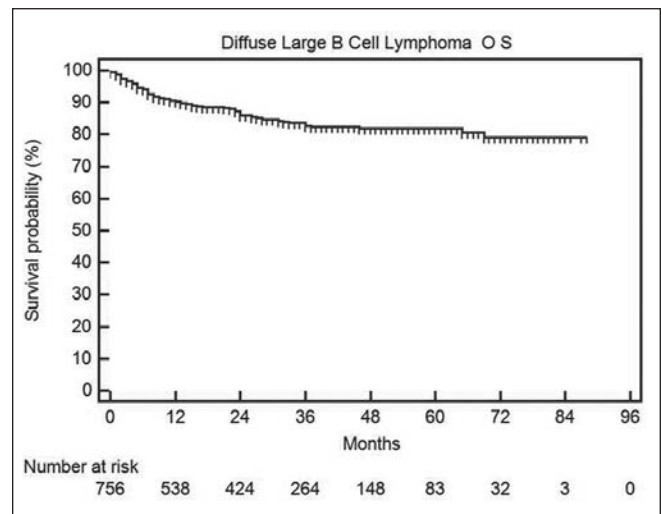


Figure 3: Overall survival in all diffuse large B cell lymphoma patients

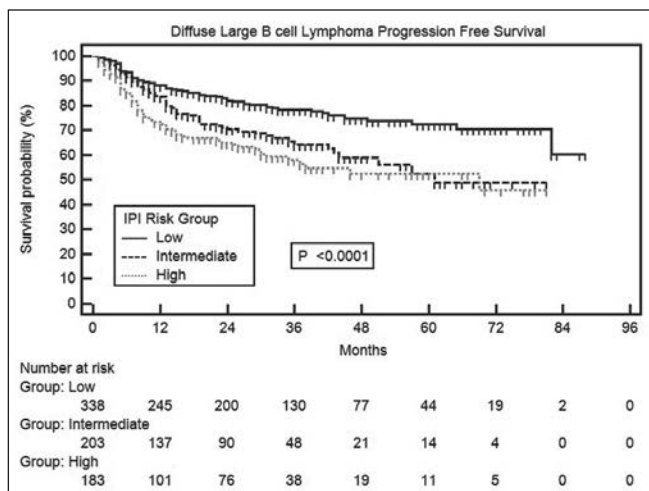


Figure 4: Progression-free survival in diffuse large B cell lymphoma patients in international prognostic index risk groups

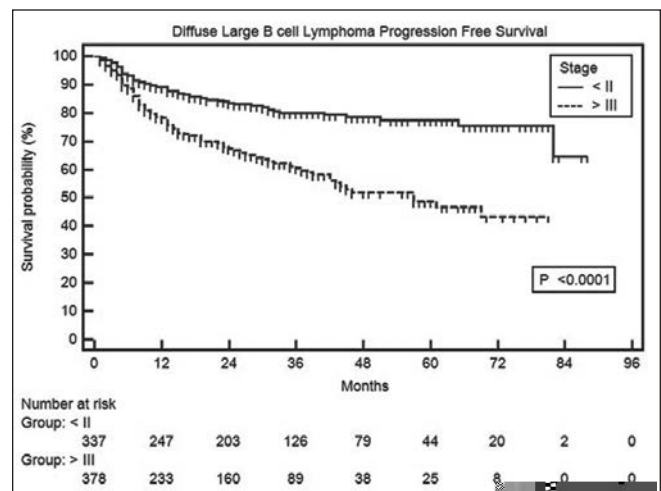


Figure 5: Progression-free survival in diffuse large B cell lymphoma patients as per modified Ann Arbor stages

DISCUSSION

Geographic variations in lymphoid malignancies are well-known, but data from India is limited. Individual centers have published their experience,^[6,7] but no nationwide registry data has been published until now. Our lymphoma registry is the first multicentric effort in collecting, analyzing and publishing the patterns of care and outcome data of lymphoma patients in India. Such coordinated activities are challenging in a country like India where oncologists and cancer centers are burdened with huge patient load in diverse conditions. The current effort is proof of concept of the feasibility and reliability of a nationwide, multicenter, patterns of care and outcome type of registry for cancers.

The distribution of pathological subtypes of lymphoma (NHL vs. HL) in our registry is consistent with other reports from India^[7,8] and somewhat higher for NHL compared to a rural registry.^[8] Within NHL the preponderance of DLBCL followed by FL in our report is also consistent with other reports from India.^[5-8] Median age of our DLBCL population was 52 years, which is younger compared with that seen in Western populations,^[9,10] but is consistent with most other reports from India.^[6,11] The younger average age of our patients is also consistent with the pattern seen in most other malignancies in India and is likely due to the effect of a younger population pyramid in this country. B symptoms were present in 37% DLBCL patients and have been variably reported from other reports from this country.^[6,11] ECOG performance status of 0-I are 70% in our study, which is higher when compared to published data from a tertiary center.^[12] This could be due to the data from a mix of private and public institutions.

Our survival data appears to be high possibly due to a significant proportion of patients lost to follow-up and censored at that point as a non-event. Our results show that low IPI score is a reliable prognostic indicator in DLBCL, but there was no difference between intermediate and high risk patients. This is in contrast to most reports from Western countries, which show a robust prognostic significance between the three groups. The reasons for this discrepancy are unclear.

As with other expensive medications, the use of rituximab was low in our population (42.7%), but is increasing compared to reports from earlier years.^[13] The addition of rituximab to chemotherapy resulted in superior PFS, but not OS in our analysis, which is in contrast to reports from randomized trials.^[14,15] Although the reasons for this result are unclear it is possible that features of retrospective analyses like considerable fraction being lost to follow-up, imbalance in numbers in the two groups and other systematic biases could

be explanatory. It is also possible that with increasing access to rituximab over the years in India, a considerable fraction of the first line rituximab naïve patients received it after

Table 3: Univariate analysis of prognostic factors

Characteristic	n (%)*	Median PFS (months)	Hazard ratio (95% CI)	P value
Age				
<60 years	539 (74.4)	NR	0.73 (0.52-1.02)	0.0465
>60 years	185 (25.5)	65		
B symptoms				
Absent	450 (61.3)	NR	0.55 (0.41-0.74)	<0.0001
Present	284 (38.7)	69		
Bone marrow				
Not involved	566 (83)	NR	0.45 (0.29-0.68)	<0.0001
Involved	116 (17)	36		
LDH elevated				
No	265 (40)	NR	0.75 (0.55-1.00)	P=0.057
Yes	398 (60)	NR		
Poor performance status				
No	584 (81.6)	NR	0.41 (0.27-0.61)	<0.0001
Yes	132 (18.4)	31		
Stage				
I-II	337 (47.1)	NR	0.43 (0.32-0.56)	<0.0001
III-IV	378 (52.9)	57		
IPI group				
Low	338 (46.7)	NR		<0.0001
Intermediate#	203 (28.0)	61		
High#	183 (25.2)	69		
Rituximab				
Yes	302 (42.70)	NR	0.69 (0.52-0.92)	0.0123
No	404 (57.3)	82		
No. of chemotherapy cycles				
>6	545 (75)	NR	0.41 (0.28-0.60)	<0.0001
<6	182 (25)	42		

*Total numbers in each cell does not add upto 791 because of missing data of some patients; #P value non-significant between IPI intermediate and high risk group; NR – Not reached; PFS – Progression-free survival; CI – Confidence interval; IPI – International prognostic index; LDH – Lactate dehydrogenase

Table 4: Multivariate analysis for OS and PFS

Covariate	OS		PFS	
	P	95% CI	P	95% CI
Age >60	0.35	0.73-2.41	0.40	0.78-1.86
B symptoms	0.12	0.91-2.40	0.17	0.91-1.79
Bone marrow involvement	0.37	0.74-2.21	0.22	0.86-1.92
IPI-elevated levels of LDH	0.31	0.73-2.72	0.23	0.84-2.09
IPI-performance status	0.003	1.40-5.28	0.01	1.11-2.90
IPI-stage of the disease III or greater	0.012	1.25-5.81	0.0001	1.69-4.94
IPI - risk group	0.19	0.38-1.21	0.22	0.52-1.16
Rituximab usage	0.37	0.79-1.99	0.01	1.11-2.21
First line number of cycles	<0.0001	0.17-0.43	<0.0001	0.27-0.54

LDH – Lactate dehydrogenase; IPI – International prognostic index; OS – Overall survival; PFS – Progression-free survival; CI – Confidence interval

relapse, blurring the OS difference. Whatever be the reason, our analysis cannot negate the proven benefit of rituximab as a component of the first line treatment regimen in DLBCL.

In our study, 25% of patients received <6 cycles of chemotherapy. Similarly, a high percentage of patients are reported who have taken <6 cycles in Prakash *et al.*^[12] study from a tertiary cancer center in India. Our results are also suggest that receipt of an adequate regimen of at least six cycles of frontline chemotherapy was associated with a superior outcome. The four main reasons for patients receiving less than six cycles of treatment could be low stage disease, severe adverse effects of chemotherapy and non-compliance to treatment and resistance to the first line (mainly CHOP) regimen, the last two of which could be responsible for the poor outcome in these patients. In the absence of detailed data on the reasons for receipt of less number of cycles, it is not possible to be definitive about the contribution of non-compliance to this result. However, it is likely that it contributed in at least some measure to the poor outcome in this subgroup, because of a variety of factors such as financial and logistic constraints in our population. It will be important to study this factor in prospective studies because it is a potentially correctable cause of inferior outcomes of treatment.

Our study has several weaknesses mainly related to its retrospective nature. It is possible that data collected from the case charts was neither complete nor entirely accurate. Moreover, there is likely to have been some pathological misclassification because of the variable expertise and infrastructure available at different centers. There were a relatively large number of patients who were lost to follow-up.

Despite these caveats, we believe that our analysis is a valuable contribution to the lymphoma literature from this part of the world. A valuable outcome has been the establishment of feasibility of systematic data collection by a large group of oncologist, spread across the country, together. We hope this will encourage others to form groups and collect data prospectively in various malignancies.

ACKNOWLEDGMENT

The authors would like to thank the funding for the establishment and running of lymphoma registry was provided by unrestricted educational grant from Roche Products India Pvt. Ltd. The authors are grateful acknowledge RPIPL for their support and special thanks to Dr. Anil Kukreja and Dr. Rupesh Pophale for assisting in manuscript writing.

REFERENCES

1. Moskowitz C. Risk-adapted therapy for relapsed and refractory lymphoma using ICE chemotherapy. *Cancer Chemother Pharmacol* 2002;49 Suppl 1:S9-12.
2. Seow A, Lee J, Sng I, Fong CM, Lee HP. Non-Hodgkin's lymphoma in an Asian population:1968-1992 time trends and ethnic differences in Singapore. *Cancer* 1996;77:1899-904.
3. Three year reports of Population based registries 2006-2008. Available from: http://www.ncrpinia.org/Reports/PBCR_2006_2008.aspx. [Last access date 08-Aug-2013].
4. Garg A, Dawar R, Agarwal V, Rustagi RK, Kochupillai V. Non-Hodgkin's lymphoma in northern India. A retrospective analysis of 238 cases. *Cancer* 1985;56:972-7.
5. Sahni CS, Desai SB. Distribution and clinicopathologic characteristics of non-Hodgkin's lymphoma in India: A study of 935 cases using WHO classification of lymphoid neoplasms (2000). *Leuk Lymphoma* 2007;48:122-33.
6. Naresh KN, Srinivas V, Soman CS. Distribution of various subtypes of non-Hodgkin's lymphoma in India: A study of 2773 lymphomas using R.E.A.L. and WHO Classifications. *Ann Oncol* 2000;11 Suppl 1:63-7.
7. Chakrabarti S, Sarkar S, Goswami BK, Mondal S, Roy A, Das S. Hodgkin's and Non-Hodgkin's lymphomas in an indian rural medical institution: Comparative clinicopathologic analysis. *Asian Pac J Cancer Prev* 2010;11:1605-8.
8. Naresh KN, Agarwal B, Sangal BC, Basu DD, Kothari AS, Soman CS. Regional variation in the distribution of subtypes of lymphoid neoplasms in India. *Leuk Lymphoma* 2002;43:1939-43.
9. Armitage JO, Weisenburger DD. New approach to classifying non-Hodgkin's lymphomas: Clinical features of the major histologic subtypes. Non-Hodgkin's Lymphoma Classification Project. *J Clin Oncol* 1998;16:2780-95.
10. Morrison VA. Evolution of R-CHOP therapy for older patients with diffuse large B-cell lymphoma. *Expert Rev Anticancer Ther* 2008;8:1651-8.
11. Khera R, Jain S, Kumar L, Thulkar S, Vijayraghwan M, Dawar R. Diffuse large B-cell lymphoma: Experience from a tertiary care center in North India. *Med Oncol* 2010;27:310-8.
12. Prakash G, Sharma A, Raina V, Kumar L, Sharma MC, Mohanti BK. B cell non-Hodgkin's lymphoma: Experience from a tertiary care cancer center. *Ann Hematol* 2012;91:1603-11.
13. Biswas G, Parikh PM, Nair R, Bhagwat R, Bakshi A, Prabhaskar K, *et al.* Rituximab (anti-CD20 monoclonal antibody) in lymphoproliferative malignancies: Tata Memorial experience. *J Assoc Physicians India* 2006;54:29-33.
14. Coiffier B, Thieblemont C, Van Den Neste E, Lepage G, Plantier I, Castaigne S, *et al.* Long-term outcome of patients in the LNH-98.5 trial, the first randomized study comparing rituximab-CHOP to standard CHOP chemotherapy in DLBCL patients: A study by the Groupe d'Etudes des Lymphomes de l'Adulte. *Blood* 2010;116:2040-5.
15. Pfreundschuh M, Kuhnt E, Trümper L, Osterborg A, Trneny M, Shepherd L, *et al.* CHOP-like chemotherapy with or without rituximab in young patients with good-prognosis diffuse large-B-cell lymphoma:6-year results of an open-label randomised study of the MabThera International Trial (MInT) Group. *Lancet Oncol* 2011;12:1013-22.

How to cite this article: Nimmagadda RB, Digumarti R, Nair R, Bhurani D, Raina V, Aggarwal S, *et al.* Histopathological pattern of lymphomas and clinical presentation and outcomes of diffuse large B cell lymphoma: A multicenter registry based study from India. *Indian J Med Paediatr Oncol* 2013;34:299-304. **Source of Support:** Lymphoma registry established with unrestricted educational grant from Roche Products (India) Pvt. Ltd., **Conflict of Interest:** Registry members received honorarium from Roche as advisory board members.