

Plasmacytoid precursor dendritic cells facilitate allogeneic hematopoietic stem cell engraftment

Isabelle J. Fugier-Vivier,^{1,2} Francine Rezzoug,¹ Yiming Huang,¹ Amanda J. Graul-Layman,¹ Carrie L. Schanie,¹ Hong Xu,¹ Paula M. Chilton,¹ and Suzanne T. Ildstad¹

¹Institute for Cellular Therapeutics and ²Department of Physiology and Biophysics, University of Louisville, Louisville, KY 40202

Bone marrow transplantation offers great promise for treating a number of disease states. However, the widespread application of this approach is dependent upon the development of less toxic methods to establish chimerism and avoid graft-versus-host disease (GVHD). CD8⁺/TCR⁻ facilitating cells (FCs) have been shown to enhance engraftment of hematopoietic stem cells (HSCs) in allogeneic recipients without causing GVHD. In the present studies, we have identified the main subpopulation of FCs as plasmacytoid precursor dendritic cells (p-preDCs). FCs and p-preDCs share many phenotypic, morphological, and functional features: both produce IFN- α and TNF- α , both are activated by toll-like receptor (TLR)-9 ligand (CpG ODN) stimulation, and both expand and mature after Flt3 ligand (FL) treatment. FL-mobilized FCs, most of which express a preDC phenotype, significantly enhance engraftment of HSCs and induce donor-specific tolerance to skin allografts. However, p-preDCs alone or p-preDCs from the FC population facilitate HSC engraftment less efficiently than total FCs. Moreover, FCs depleted of preDCs completely fail to facilitate HSC engraftment. These results are the first to define a direct functional role for p-preDCs in HSC engraftment, and also suggest that p-preDCs need to be in a certain state of maturation/activation to be fully functional.

CORRESPONDENCE

Suzanne T. Ildstad:
suzanne.ildstad@louisville.edu

Abbreviations used: CM, chimerism media; CSM, cell sort media; FC, facilitating cell; FL, Flt3 ligand; GVHD, graft-versus-host disease; HSC, hematopoietic stem cell; MST, median survival time; p-preDC, plasmacytoid precursor DC; TBI, total body irradiation; TCD, T cell depletion; TLR, toll-like receptor.

An elusive goal in organ transplantation and the treatment of autoimmune diseases is the induction of tolerance. BM chimerism induces robust donor-specific tolerance to organ and cellular transplants and, as such, offers significant therapeutic potential (1, 2). However, graft-versus-host disease (GVHD) and the toxicity of ablative conditioning have limited the widespread clinical application of this approach (3, 4). T cell depletion (TCD) of BM prevents GVHD, but is associated with significantly impaired engraftment (5–7). We were the first to identify a CD8⁺/TCR⁻ BM population that facilitates hematopoietic stem cell (HSC) engraftment across MHC barriers without causing GVHD (8–10). CD8⁺/TCR⁻ facilitating cells (FCs) are comprised of a heterogeneous population and share cell surface markers with T cells, but are distinct from them (11). FCs also share phenotypic characteristics with CD8 α lymphoid DCs (8).

The therapeutic potential of DCs in transplantation has recently become the focus of intense research, with the emerging concept of using “tolerogenic” DCs in the graft to silence host immunity and enhance engraftment, while also preventing GVHD (12–16). Besides their well-characterized immunogenic function, DCs have been demonstrated to play a role in the induction of tolerance by tolerizing donor T cells to self-antigen (17, 18). The dual functions of DCs (immunization versus tolerization) can be explained by: (a) the recent identification of distinct DC subsets; (b) the dose, nature, and duration of activation signals received by the DCs; and (c) the maturational state of DCs upon encounter with antigen (15, 19).

The recently defined DC subpopulation of plasmacytoid precursors DCs (p-preDCs) has become a major focus of interest in transplantation. Recent findings suggested that p-preDCs are tolerogenic DCs because the presence of these cells in the BM graft correlated with a decreased occurrence of GVHD (20–22). Initially, p-preDCs were described as the major

I.J. Fugier-Vivier and F. Rezzoug contributed equally to this work.

type 1 IFN-producing cells due to their potent capacity to produce IFN- α in response to virus or microbial stimulation with toll-like receptor (TLR)-9 ligands such as CpG ODN (23–27). The phenotype of murine p-preDCs has now been characterized as a B220⁺/CD11c^{dim}/CD11b⁻ cell population with a plasmacytoid morphology (24, 28). p-preDCs can induce the development of either a Th1 or a Th2 immune response, depending on the dose and/or the nature of antigen exposure (19). In HSC transplantation, a direct functional role for p-preDCs has not yet been defined.

In the present studies, we report that the majority of FCs share functional characteristics with p-preDCs in their ability to secrete IFN- α , TNF- α , and other cytokines and mature by up-regulating activation markers, after activation by CpG ODN. Flt3 ligand (FL), a key cytokine for p-preDC development (25, 28, 29), similarly regulates FCs in that FCs can be generated from FL-supplemented BM cell cultures, as well as expanded and mobilized *in vivo* in FL-treated mice. The majority of FL-mobilized FCs exhibit a p-preDC phenotype. Additionally, these mobilized FCs facilitate long-term HSC engraftment and induce tolerance in allogeneic recipient mice. Because of the similarities between p-preDCs and FCs, we examined whether p-preDCs and p-preDCs from the FC population contribute directly to HSC facilitation *in vivo*. We show for the first time that p-preDCs significantly facilitate HSC engraftment. However, facilitation by the p-preDCs as well as preDC FCs is significantly less ef-

ficient than that for total FCs. Moreover, when p-preDCs are depleted from the FC population, facilitation of HSCs is lost. These data demonstrate that p-preDCs play a key role in facilitation of HSCs by FCs and suggest that FCs consist of p-preDCs that act in concert with other collaborative cell types to allow optimal HSC engraftment. A clear definition of FC phenotype and mechanism of action may provide a promising cell-based approach to enhance engraftment and tolerance while avoiding alloreactivity.

RESULTS

CD11c⁺ cells are the predominant cell type within the FC population

To better characterize FCs, we analyzed markers expressed on the sorted CD8 α ⁺/TCR⁻ FC population by FACS analysis. Approximately 65–70% of FCs express CD11c⁺ (Fig. 1 A), and 75–88% of FCs express B220 (Fig. 1 A). Among the subpopulations negative for B220 expression, 4–6% were NK (NK1.1⁺ and DX5⁺), 6–7% were granulocytes (Gr-1⁺), and 2–4% were monocytes (CD14⁺; Fig. 1 A). Among the B220⁺ subpopulation, only 15% were B cells (CD19⁺; Fig. 1 A), and 65% were DCs (CD11c⁺). The CD19⁺/B220⁺ FC subpopulation was also positive for intracytoplasmic IgM (unpublished data), confirming a B cell phenotype. Taken together, these data demonstrate that there are distinct subpopulations within the sorted FCs, with a majority as DCs. In addition, the sorted FCs exhibited a heterogeneous mor-

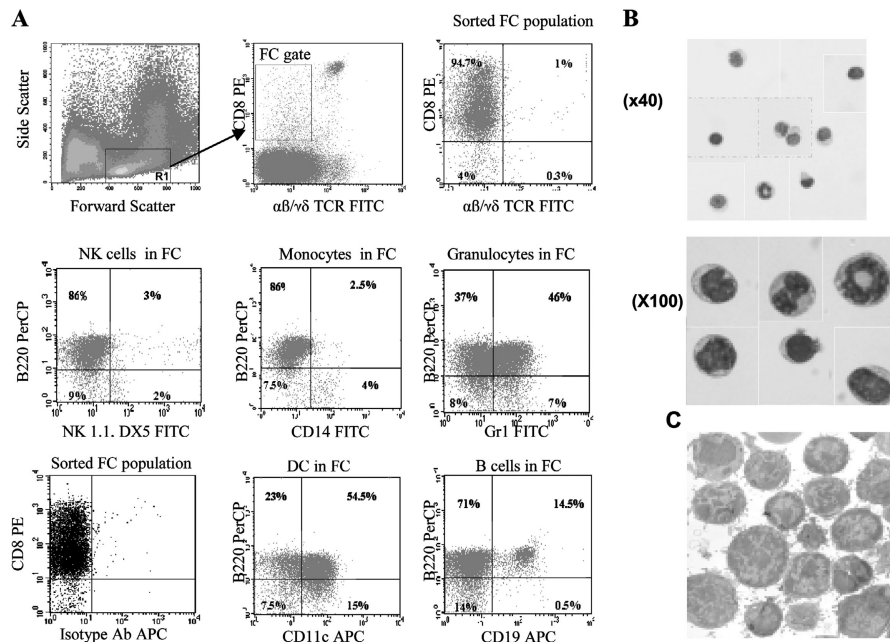


Figure 1. CD8⁺/TCR⁻ FCs: a heterogeneous population. (A) CD11c⁺ FCs are the predominant subpopulation in sorted FCs. BMCs stained with anti- $\alpha\beta$ -TCR FITC, anti- $\gamma\delta$ -TCR FITC, and anti-CD8 α -PE were isolated from the lymphoid gate (intermediate forward scatter and lower side scatter, R1) and sorted for CD8 α ⁺/TCR $\alpha\beta$ ⁻/TCR $\gamma\delta$ ⁻ (FC gate). The sorted FCs were blocked using the anti-Fc receptor Ab and stained with anti-B220-PerCP and anti-Gr-1 FITC, or anti-B220-PerCP, anti-NK1.1 FITC and anti-DX5 FITC, or anti-B220-PerCP with anti-CD19 APC, or anti-B220-PerCP with anti-

CD11c APC, or anti-B220-PerCP with anti-CD14 FITC. Isotype-specific controls were performed. Flow cytometric profiles are representative of at least three experiments in B6, two experiments in B10, and two experiments in B10.BR. The reanalysis of sorted FCs stained with different isotype Ab allowed us to verify the purity of the population (>95%) and the absence of T cell contaminants (<1%). Morphology of sorted CD8⁺/TCR⁻ FCs was examined after (B) Wright-Giemsa staining with optical microscopy at two different magnifications and (C) by transmission electron microscopy.

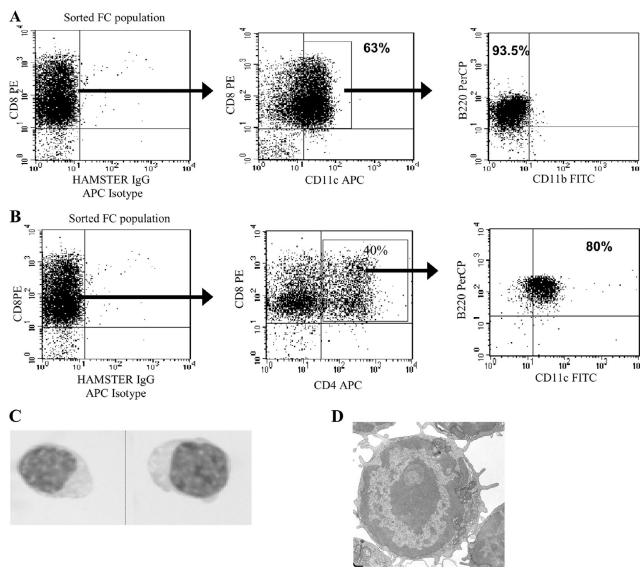


Figure 2. CD11c⁺ FCs resemble p-preDCs. (A) CD11c⁺ FCs present a p-preDC phenotype. Sorted FCs were stained with anti-B220-PerCP, anti-CD11c APC, and anti-CD11b FITC after FcR blocking. The CD11c^{dim} population (up to 70% of the total FC gate) was analyzed for B220 and CD11b expression. Flow cytometric profiles are representative of at least three separate experiments in both B6 and B10. (B) CD4 FCs present a p-preDC phenotype. Freshly sorted FCs from BM were stained with anti-CD11c FITC, anti-B220-PerCP, and anti-CD4 APC Ab after FcR blocking. The CD4⁺ population was analyzed for B220 and CD11b expression. Flow cytometric profiles are representative of at least two separate experiments in B6. Morphology of the majority of sorted CD8⁺/TCR⁻ FCs was examined (C) after Wright-Giemsa staining under optical microscopy ($\times 100$), and (D) by transmission electron microscopy.

phology on cytopins with Wright-Giemsa staining (Fig. 1 B) and by transmission electronic microscopy (Fig. 1 C).

95% of CD11c⁺ FCs resemble p-preDCs

Because CD11c⁺ DCs represent the largest subset in the FC, we analyzed the known subtypes of DCs present in the sorted FC population by FACS analysis (Fig. 2 A). Strikingly, p-preDCs (B220⁺/CD11c^{dim}/CD11b⁻) comprised 93–95% of the CD11c⁺ FC subpopulation (Fig. 2 A). To confirm that the predominant CD11c⁺ FC subpopulation was related phenotypically to p-preDCs, we analyzed the presence of CD4 on sorted FCs, as at least 70% of BM p-preDCs have been shown to express the CD4 antigen (24). Approximately 40–50% of FCs expressed CD4 (Fig. 2 B), and this CD4⁺ FC subpopulation was almost exclusively of plasmacytoid phenotype (CD11c⁺/B220⁺).

The majority of FCs exhibited a characteristic plasmacytoid morphology, with a round shape, a smooth surface, and an eccentric nucleus after Wright-Giemsa staining (Fig. 2 C). Transmission electronic microscopy confirmed the plasmacytoid morphology of FCs (Fig. 2 D). In the face of these striking phenotypic and morphological similarities, we hypothesize that the predominant CD11c^{dim}/B220⁺/CD11b⁻ cell population in the FC gate is likely the equivalent to CD8 α ⁺ p-preDCs, a small subpopulation of BM p-preDCs (24, 30).

FCs produce IFN- α , TNF- α , and other cytokines after CpG ODN stimulation

Given that IFN- α , TNF- α , and inflammatory cytokine production are main features of p-preDCs, we examined whether FCs resemble p-preDCs in response to stimulation with CpG ODN. FCs produced IFN- α at levels similar to those produced by p-preDCs after CpG ODN stimulation (Fig. 3 A). Additionally, as for preDCs, FCs did not produce significant levels of IFN- α after LPS stimulation (unpublished data). In addition to IFN- α secretion, FCs produce large amounts of TNF- α (Fig. 3 B) and other proinflammatory cytokines including high amounts of MIP-1 α /CCL3, moderate amounts of IL-6 and RANTES/CCL5, and low levels of IL-12p70 after CpG ODN stimulation (Fig. 3 C). FCs produced low amounts of IL-9, IL-10, IFN- γ , and MCP-1/CCL2 (Fig. 3 C) and no GM-CSF, IL-1 β , IL-2, IL-4, IL-5, or IL-13 (unpublished data) after culture with medium or CpG stimulation. In total, these data demonstrate that FCs resemble p-preDCs in response to CpG ODN.

Because p-preDCs mature after CpG ODN stimulation, we analyzed whether FCs resemble p-preDCs in maturation/activation (28, 30, 31). After overnight exposure with medium or CpG ODN, FCs were analyzed for MHC-class II, CD80, and CD86 expression (Fig. 3 D). Class II and CD86 were highly up-regulated on FCs (from $18 \pm 8\%$ to $74 \pm 6.5\%$ and from up to $7 \pm 19\%$ to $86 \pm 12\%$, respectively, $n = 4$), and, to a lesser extent, CD80 (from $10 \pm 3.7\%$ to $23.5 \pm 8\%$, $n = 4$; Fig. 3 D). Similarly, CD86 is up-regulated on p-preDCs (from $12 \pm 9\%$ to $85 \pm 13\%$, $n = 2$) in a similar amount to FCs, but class II up-regulation on p-preDCs (from $10 \pm 2\%$ to $39 \pm 4\%$, $n = 2$) did not increase as much as it did on FCs. The increase of CD80 (from $7 \pm 1\%$ to $12.5 \pm 1\%$, $n = 2$) on p-preDCs was only slight.

FL is a key cytokine for FC expansion and maturation in vitro

Coculture of BMCs with FL increases the frequency of p-preDCs (28, 29). We therefore determined whether FCs can be propagated using similar culture conditions. After 10 d in culture with FL, FCs (FL-derived FCs), and p-preDCs (FL-derived p-preDCs) were sorted. We observed a sevenfold increase in FL-derived FCs ($n = 8$) and 17-fold in FL-derived p-preDCs ($n = 4$) from the cultured BM (Fig. 4 A).

Interestingly, FL-derived FCs were in a more activated state than fresh FCs, as evidenced by their morphology (Fig. 4 B). Dendrites were already beginning to appear on FL-derived FCs after overnight culture, and their appearance was amplified after exposure to CpG ODN. FL-derived FCs also produced significant amounts of IFN- α after overnight culture (Fig. 4 C), perhaps reflective of their activation state. FL-derived p-preDCs also produced IFN- α after overnight culture. Stimulation with CpG ODN overnight further increased the IFN- α secretion, as well as TNF- α and IL-12p70 production.

The effect of FL on FCs or p-preDCs was further evaluated by analyzing activation marker expression after over-

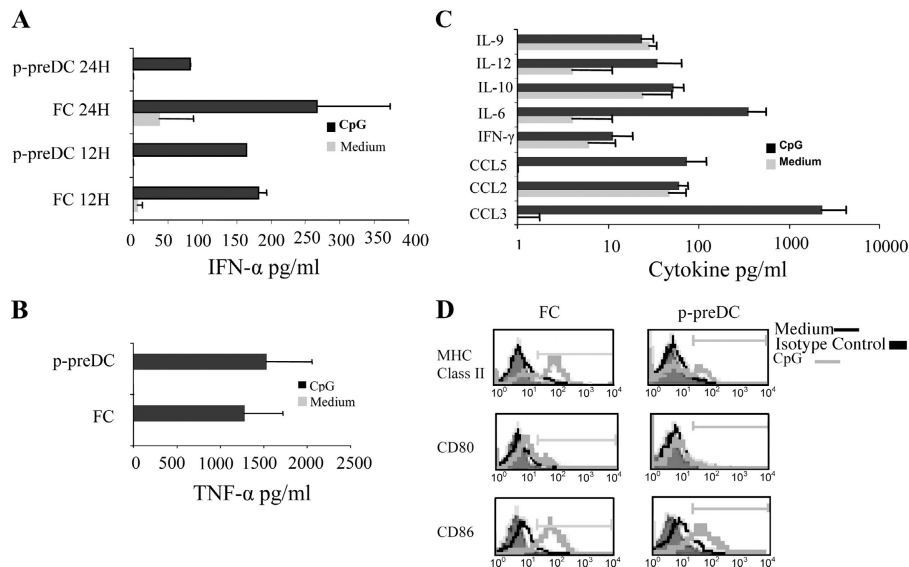


Figure 3. FCs exhibit in vitro function similar to p-preDCs. (A) FCs secrete IFN- α . BM FCs and p-preDCs were cultured with CpG ODN or medium only. Culture cell-free supernatants were collected after 12 or 24 h and IFN- α production was assessed by ELISA. Data are means \pm SEM of at least two experiments, run in duplicate. (B) FCs secrete TNF- α . BM FCs and p-preDCs were cultured with medium only or CpG ODN. Culture cell-free supernatants were collected after 24 h and TNF- α was assessed by ELISA. Data are means \pm SEM of at least two experiments, run in duplicate. (C) FCs secrete other proinflammatory cytokines. BM FCs (0.05×10^6 cells/night culture. Interestingly, both FL-derived FCs and FL-derived p-preDCs significantly up-regulated expression of MHC class II, CD80, and CD86, as compared with FCs and p-preDCs sorted from fresh BM cells (BMCs; Fig. 4 D). Indeed, 40% of FL-derived FCs expressed class II versus 18% of fresh FCs, 47% expressed CD80 versus 11% of fresh FCs, and 51% expressed CD86 versus 17% of fresh FCs. Similarly, FL-derived p-preDCs up-regulated the level of class II, CD80, and CD86. CpG ODN exposure overnight further increased the level of expression of these activation markers on both FL-derived FCs (73% of class II, 48% of CD80, and 77% expression of CD86) and FL-derived p-preDCs (88% of class II, 63% of CD80, and 87% of CD86; Fig. 4 D).

In conclusion, FCs as well as p-preDCs expanded from FL-supplemented BMC cultures are in a more advanced activation state than freshly isolated cells. Nevertheless, they display similar cytokine secretion and activation marker up-regulation after exposure to CpG.

In vivo FL-mobilized FCs facilitate HSC engraftment in allogeneic recipients

FL treatment in vivo expands DCs, including the p-preDCs subtype (25, 32). We showed previously that mice treated with FL demonstrate a significant expansion of FCs in PB, BM, and spleen, with the peak production at 10 d (33). Here, we characterized the influence of FL administration on the different subtypes in the FC population in PB and analyzed the functional potential of purified blood FL-mobilized FCs (FL-FCs) to facilitate HSC engraftment. Approxi-

mately 85–90% of FL-FCs in the PB express CD11c (Fig. 5 A), and 5–7% express NK1.1, but none express CD19 or CD14 (unpublished data). Interestingly, there were clearly two distinct DC populations: CD11c^{dim} and CD11c^{bright}. Further analysis showed that the 60% CD11c^{dim} population, characteristic of an immature DC phenotype, was exclusively the p-preDCs phenotype (B220⁺/CD11c^{dim}/CD11b⁻). The 20% CD11c^{bright} population, characteristic of mature DCs, contained a majority of mature lymphoid DCs (B220⁻/CD11c^{bright}/CD11b⁻), and all expressed the CD86 marker (unpublished data). Therefore, FL mobilization induced a significant increase in the CD11c population, and dramatically decreased the B cell and monocyte populations (unpublished data).

We next asked whether purified FL-FCs from PB maintained their ability to facilitate HSC engraftment in allogeneic recipients. HSCs were sorted from the marrow of untreated B10.BR mice and FCs from the PB of FL-treated B10.BR mice after 10 d of treatment. B10-recipient mice were ablatively conditioned and reconstituted with 5,000 HSCs plus 30,000 FL-FCs. Control B10 mice received 5,000 HSCs alone or 5,000 HSCs plus 30,000 FCs from untreated B10.BR donor mice. FL-FCs were functional, as evidenced by 87% long-term survival (>180 d; Fig. 5 B). All mice receiving FCs from untreated mice with HSCs survived longer than 180 d. In contrast, none of the mice receiving allogeneic HSCs alone survived > 170 d. Thus, the FL-FCs from PB exhibited significant facilitation of engraftment of HSCs in allogeneic recipients.

well) were cultured with medium only or CpG ODN. Supernatants were collected after 18 h and MIP-1 α (CCL3), MCP-1 (CCL2), RANTES (CCL5), IFN- γ , IL-6, IL-10, IL-12p70, and IL-9 were assessed by LINCoplex multiplex immunoassay. Data are means \pm SEM of three separate experiments, run in duplicate. (D) Up-regulation of activation markers on FCs. Sorted FCs and p-preDCs from BMCs were cultured with medium or CpG ODN for 18 h and stained with the MHC-class II, CD80 or CD86 FITC labeled, or isotype control mAb. Data on expression of markers are representative of at least four experiments on FCs and three experiments on p-preDCs.

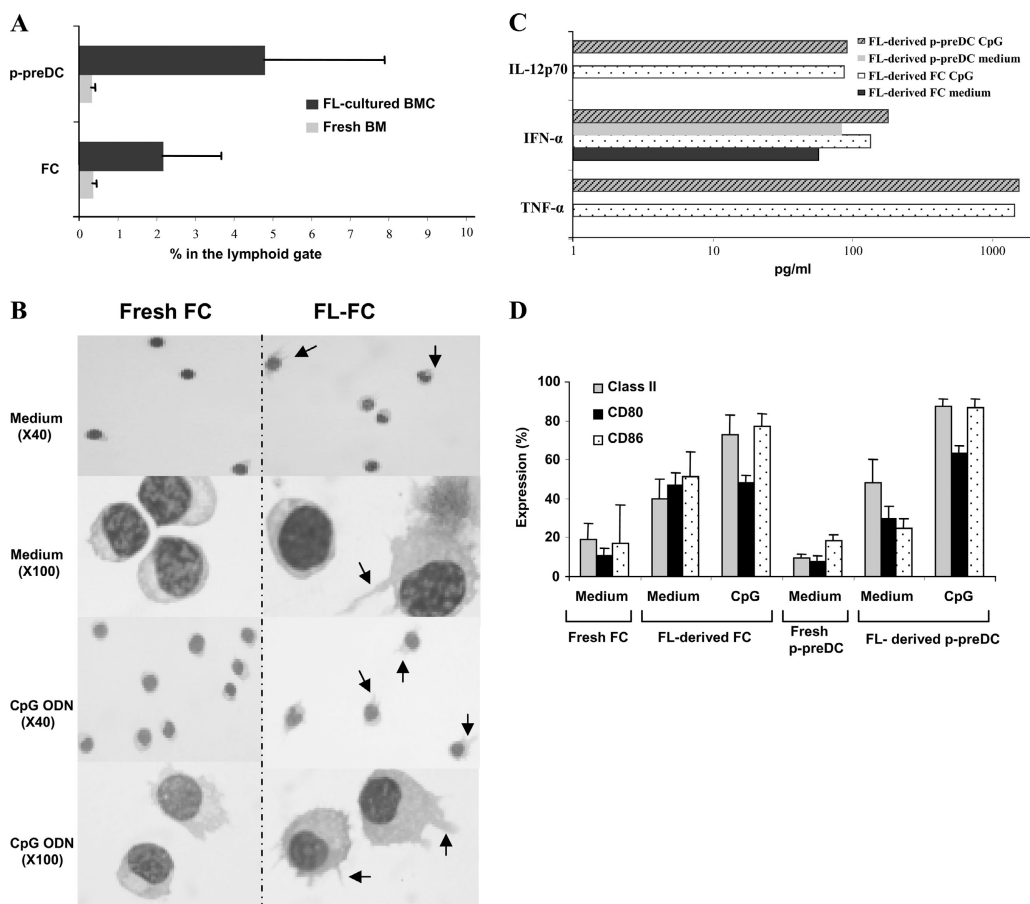


Figure 4. FL is a key cytokine for FC expansion and maturation in vitro. (A) FCs expansion from FL-cultured BMCs. Fresh BMCs and BMCs cultured with FL for 10 d were sorted for $CD8\alpha^+/TCR\alpha\beta^-/TCR\gamma\delta^-$ FCs and $CD11c^+/CD11b^-/B220^+$ p-preDCs. The data shown represent the percentage of sorted cells in the lymphoid gate and are means \pm SEM of more than 8 experiments for FL-derived FCs and FL-derived p-preDCs and of more than 10 experiments for FCs and p-preDCs in fresh BM. (B) Morphology of sorted FL-derived FCs after 18 h incubation. BM FCs were sorted from fresh BM or from a 10-d FL-cultured BM. Cells were incubated for 18 h with medium or CpG ODN and were examined after Wright-Giemsa staining by optical microscopy at several magnifications. Arrows indicate

We examined recipients of HSCs plus FL-FCs for donor chimerism and multiple hematopoietic lineages 3 mo after transplantation. All surviving animals tested showed $>95\%$ donor chimerism for multiple lineages, including T cells, NK cells, B cells, macrophages, and granulocytes (Fig. 5 C).

To test whether these FL-FCs plus HSC chimeras were functionally tolerant, skin grafts from B10.BR (HSC donor) or BALB/c (third-party) mice were performed. Donor-specific skin grafts were accepted by the chimeras (median survival time [MST] >100 d), while third-party (BALB/c) grafts were promptly rejected (MST = 15 d; Fig. 5 D). In conclusion, FL treatment significantly expands FCs in PB that consist of 85–90% $CD11c^+$ cells, with 20% of these being mature DCs, and the distinct majority (60–65%) resembling the p-preDCs phenotype. Most importantly, FL-FCs enhance HSC engraftment and tolerance induction in allogeneic recipients.

dendrites. (C) Cytokine secretion of FL-derived FCs. BM FCs and p-preDCs were sorted from a 10-d FL-cultured BM and were incubated with medium only or CpG ODN. Culture supernatants were collected after 24 h and TNF- α , IFN- α , and IL-12p70 were assessed by ELISA. Data are representative of at least two different experiments, run in duplicate. (D) Up-regulation of activation markers on FL-derived FCs. FL-derived FCs and FL-derived p-preDCs were sorted from a 10-d FL-cultured BMCs. FCs and p-preDCs were also sorted from fresh BM. Cells were incubated for 18 h with medium or CpG ODN and then stained with the MHC-class II, CD80, CD86 FITC-labeled, or isotype control antibodies. Data are means \pm SEM of FACS analysis of at least three experiments.

Purified p-preDCs facilitate HSC engraftment in allogeneic recipients with less efficiency than FCs

Due to the predominance of p-preDCs in either fresh BM FCs or FL-mobilized FCs, we directly addressed whether purified p-preDCs from BMCs were functional to facilitate HSC engraftment. 5,000 B6 HSCs were injected alone into ablated C3H mice (HSC group), or with 30,000 B6 FCs (HSCs + FCs group), or with 30,000 B6 p-preDCs (HSCs + p-preDCs group). Engraftment was significantly enhanced in recipients of HSCs + p-preDCs (51% survival, $n = 22$) compared with the HSC alone group ($P = 0.0076$; Fig. 6 A). However, the survival was significantly enhanced in the HSCs + FCs group (95% survival, $n = 21$) compared with the HSC alone group ($P < 0.00001$) and was also significantly enhanced over the HSCs + p-preDCs group ($P = 0.0083$). Thus, p-preDCs effectively facilitated HSC en-

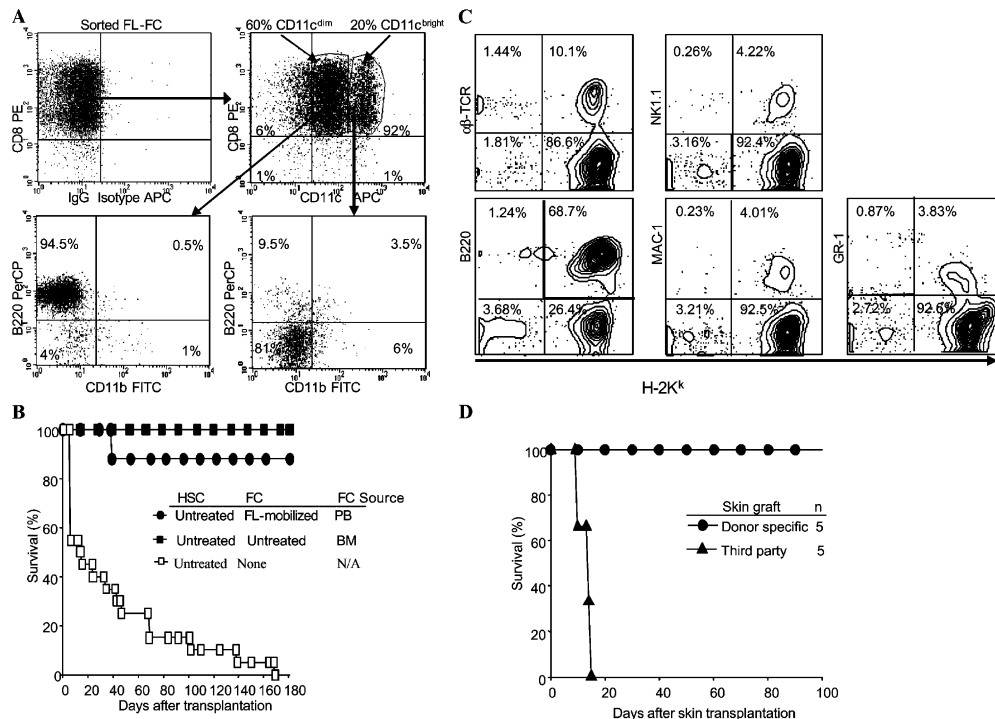


Figure 5. FL-mobilized FCs facilitate HSC engraftment in allogeneic recipients. (A) FACS analysis of subpopulations in sorted FL-mobilized FCs. CD8 α^+ /TCR $\alpha\beta^-$ /TCR $\gamma\delta^-$ FL-mobilized FCs were sorted and stained after FcR blocking. Four-color flow cytometry analysis was performed to characterize distinct subtypes. The CD11c^{dim} and the CD11c^{bright} populations were gated and further analyzed for the presence of CD11b and B220 marker expression. The dot plots are representative of two independent experiments in each B6 and B10.BR mouse strain. (B) FL-mobilized FCs from PB facilitate engraftment of HSCs (B10.BR \rightarrow B10). B10-recipient mice were conditioned with 950 cGy TBI and were given 5,000 HSCs from untreated B10.BR donors either alone (\square) or mixed with 30,000 purified

FCs from untreated B10.BR BM (\blacksquare) or from B10.BR FL-treated FCs from PB (\bullet). Survival was followed for up to 6 mo. (C) Donor multilineage typing of HSC + FL FC chimeras (B10.BR \rightarrow B10). T cell (TCR β), NK cell (NK1.1), B cell (B220), macrophage (Mac-1), and granulocyte (Gr-1) markers were assessed on donor-derived (H-2K^k) PBL from recipient mice 3 mo after transplantation. Data are representative from one chimera out of four performed. (D) Survival of skin grafts in mixed allogeneic chimeras (B10.BR \rightarrow B10). Donor-specific (B10.BR, $n = 5$) and third-party (BALB/c, $n = 5$) skin grafts were transplanted in mixed allogeneic chimeras 3 mo after HSC plus FL-mobilized PB FC transplantation. Data shows skin graft survival over 100 d.

graftment, but less efficiently than the FCs total. Donor-derived hematopoietic cells were present at levels $>95\%$ in all alive animals receiving HSCs + p-preDCs at 3 mo after transplantation (Fig. 6 B), indicating that the chimerism was significantly high and consistent between all recipients. Multilineage production was present in animals transplanted with HSCs + p-preDCs at 3 mo after transplantation (Fig. 6 B).

To test whether the chimerism achieved with transplantation of HSCs + p-preDCs induced donor-specific tolerance, skin grafts from B6 (HSC donor), and BALB/c (third-party) mice were performed. Donor-specific skin grafts were accepted by chimeras (MST > 90 d), whereas third-party (BALB/c) grafts were promptly rejected (MST = 13.5 d; Fig. 6 C). In conclusion, p-preDCs enhance engraftment of purified allogeneic HSCs, as shown by chimerism and tolerance to donor antigens, but with somewhat less efficiency than FCs.

Depletion of p-preDCs FCs abrogates facilitation

To determine whether the p-preDCs in the FC population were the critical subpopulation responsible for facilitating function, we coinjected HSCs with FCs depleted of the

p-preDCs population (Fig. 7 A) and followed the kinetic of engraftment. Notably, facilitation was significantly impaired in recipients of HSCs + FCs without p-preDCs, with a survival mean of 29.3 d \pm 2.22 (Fig. 7 B) compared with total FCs ($P = 0.0006$). In striking contrast, p-preDC FCs alone facilitated HSC engraftment, but with less efficiency than the total FC population. In that group, at 3 mo, all surviving recipients of HSCs + p-preDC FCs exhibited high levels of donor chimerism ($>95\%$) and multilineage production (unpublished data). These data definitively prove that p-preDCs play the main role in the facilitating function but could not replace total FCs.

DISCUSSION

HSC chimerism has the potential to induce tolerance to organ transplants and restore self-tolerance for treatment of autoimmune diseases. However, the widespread application of this promising therapy in the clinic is dependent upon reducing the toxicity associated with conventional BMT. A great deal of attention has been focused on identification of cells with facilitating potential to enhance HSC engraftment and avoid the toxicity of BMT. One such subpopulation is

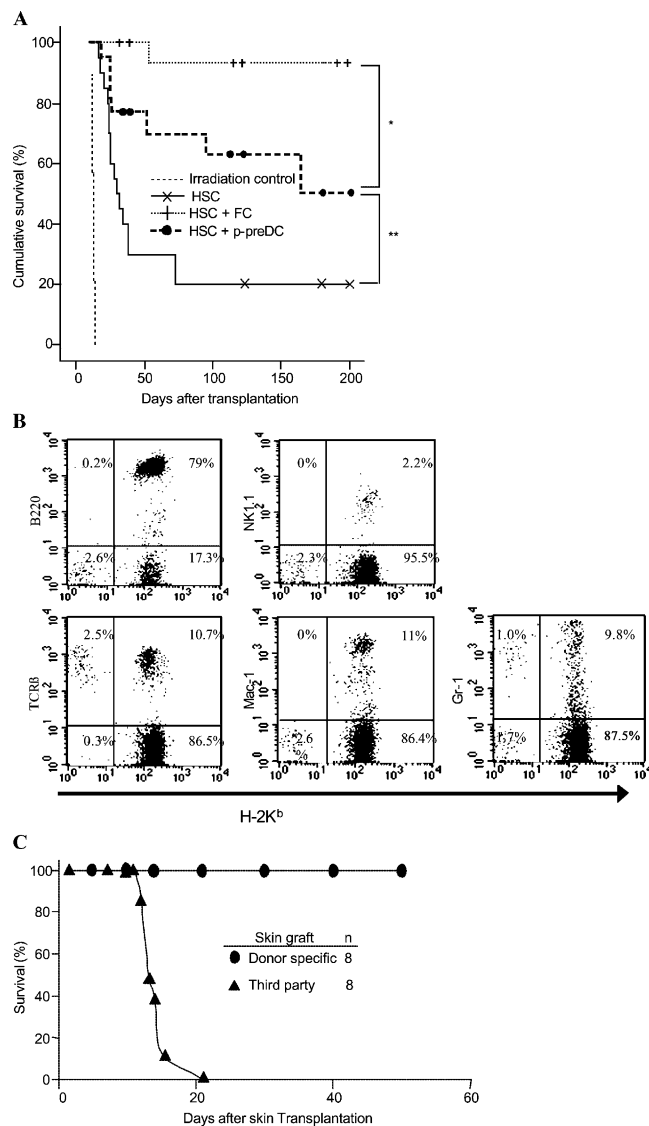


Figure 6. p-preDCs facilitate HSC engraftment in mismatched recipients. (A) Survival of allogeneic recipients transplanted with HSCs and p-preDCs from BM (B6 → C3H). C3H-recipient mice were conditioned with 950 cGy TBI and were given 5,000 HSCs either alone (HSC group, ×) or mixed with 30,000 purified FCs (HSC + FC group, +), or with p-preDCs (CD11c^{dim}/CD11b⁻/B220⁺/Lin⁻; HSC + p-preDC group, ●) from B6 mice. Some recipient mice were used as irradiation controls (----). The cumulative survival percentage of recipients is represented by the Kaplan-Meier method, and animals were followed for 6 mo. *, P = 0.0083 between the HSC + FC group and the HSC + p-preDC group, **, P = 0.0076 between the HSC + p-preDC group and the HSC group. (B) Multilineage typing of HSC + p-preDC chimeras (B6 → C3H). T cell (TCRβ), NK cell (NK1.1), B cell (B220), macrophage (Mac-1), and granulocyte (Gr-1) markers were assessed on donor-derived (H-2K^b) PBL from recipient mice 3 mo after transplantation. Data are representative from one chimera of six performed. (C) Survival of skin grafts in HSC + p-preDC chimeras (B6 → C3H). Donor-specific (B6, n = 8) and third-party (BALB/c, n = 8) skin grafts were performed 3 mo after HSC plus p-preDC transplantation. Data shows skin graft survival over 90 d.

the CD8⁺/TCR⁻ FCs that enhance engraftment of purified allogeneic HSCs without causing GVHD (8, 10). Until now, the precise characterization of FCs has remained con-

troversial due to the heterogeneity of the CD8⁺/TCR⁻ population and the infrequency of the various components. In the present studies, we demonstrate that the major component of the FC population resembles p-preDCs, making them likely candidates for the biologic function of facilitation. We show for the first time that p-preDCs significantly facilitate HSC engraftment in allogeneic recipients and induce tolerance without causing GVHD.

Previously, the heterogeneous CD8⁺/TCR⁻ FC population was described as sharing phenotypic characteristics with CD8α lymphoid DCs (8). At that time, the phenotype for murine p-preDCs was unknown, making an assessment of the relative contribution of this DC subset to facilitation impossible. We have now demonstrated that the B220⁺/CD11c^{dim}/CD11b⁻ cells in the FC gate exhibit a morphology and a phenotype that closely resembles p-preDCs. Unlike mouse BM p-preDCs, most of which are CD8α⁻, all of the B220⁺/CD11c^{dim}/CD11b⁻ FCs express the CD8α antigen. CD8α expression on mouse p-preDCs has been demonstrated to vary according to tissue source and state of activation, increasing from 10 to 30% on resting BM p-preDCs to 70 to 100% after activation (24, 30, 34). We therefore hypothesized that the B220⁺/CD11c^{dim}/CD11b⁻ FCs in the BM represent resting BM CD8α⁺ p-preDCs. This hypothesis is reinforced by the fact that isolated FCs from fresh/untreated BM exhibit a low expression of costimulatory molecules (i.e., MHC class II, CD80, CD86), CD40 (unpublished data), and no CD205 expression (unpublished data), as has been reported for p-preDCs (24, 35). Although other cells, including B cells, NK cells, granulocytes, and monocytes are also present in the FC population, the paucity of these cells in the functional FL-mobilized PB-FC population (unpublished data) led us to conclude that these cells do not play a significant role in facilitation and reinforces our hypothesis that this recently described rare population of p-preDCs are central to facilitation.

In the present studies, we have shown that FCs share many features with p-preDCs, including their response to CpG ODN with: (a) secretion of similar cytokines and chemokines; and (b) maturation. The hallmark of p-preDCs is the capacity to produce high amounts of IFN-type I, consisting of IFN-α, and IFN-β, in response to appropriate stimulation (19, 23). Mouse p-preDCs, as their human counterparts, respond preferentially to ligands for TLR7 and TLR9 and only poorly to ligands for TLR2, TLR3, or TLR4 (36). Notably, FCs produce IFN-α after stimulation with CpG ODN, and none after stimulation with LPS (TLR4 ligand; unpublished data). Besides IFN-α, FCs produce other cytokines and chemokines, including MIP-1α, MCP-1, TNF-α, RANTES, IL-6, IFN-γ, and IL-12p70. p-preDCs are potentially “tolerogenic” under selected circumstances, and have been shown to induce anergy in an antigen-specific CD4⁺ T cell line (37), differentiation of naive CD4 and CD8 T cells into Th2 cells (38), and induction of regulatory T cells in vitro (31, 39, 40). Moreover, a recent publication has shown that the adoptive transfer of

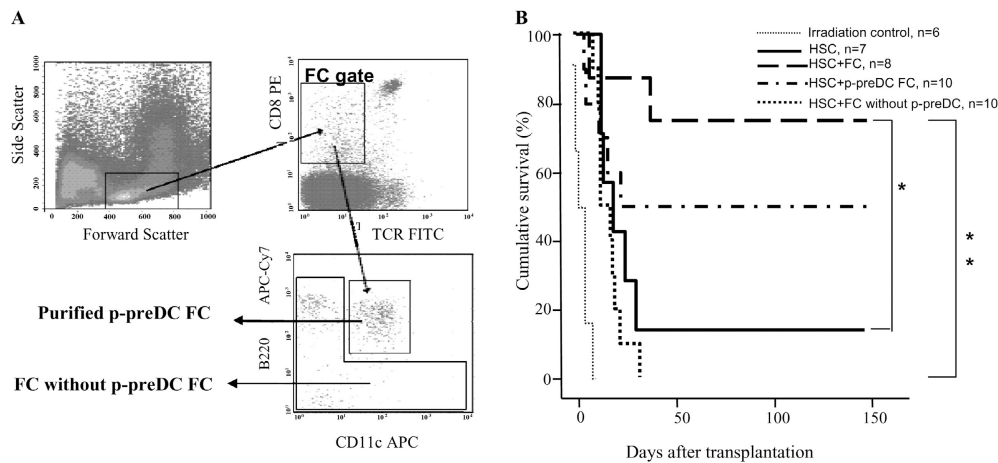


Figure 7. p-preDCs are the key cell subtype in the FCs population. (A) Sort of p-preDC FCs and FCs without p-preDCs. From an FC gate ($CD8^+/TCR^-$), $CD11c^+/B220^+$ cells were isolated and represented the p-preDC FC. The FCs without p-preDCs are all cells from the FC gate remaining after removal of the $CD11c^{dim}/B220^+$ cells. (B) Survival of allogeneic recipients transplanted with HSCs and FCs without p-preDCs or p-preDC FCs (B10.BR \rightarrow B10). B10 mice were conditioned with 950 cGy TBI and given 5,000 HSCs alone (HSC group, —) or in combination with 30,000

p-preDCs prevented the development of asthma in a mouse model outlining the tolerogenic capacity of p-preDCs (40). In light of the similarities between preDCs and FCs, it is possible that FCs induce immune deviation to promote a tolerogenic milieu for HSC engraftment either via cytokines, suppression of effector CD8 T cells and/or generation of regulatory T cells. The fact that FCs produce a significant amount of IL-10, a potent antiinflammatory cytokine (41) used to generate regulatory T cells in vitro or in vivo (42, 43), supports this hypothesis. The generation of regulatory T cells after FC transplantation may enhance engraftment by tolerizing alloreactive responses. Interestingly, FCs highly up-regulate CD86 expression after CpG ODN stimulation. It is therefore possible that after transplantation, the CD86 on FCs interacts with its ligand, CTLA-4, on T cells, leading to a decrease in allogeneic T cell responses. Although outside the scope of this manuscript, studies are in progress to determine whether FCs induce Th2 immune deviation and/or the production of donor regulatory T cells.

In humans and in mice, the development of p-preDCs is dependent upon FL (32). Similarly, FL is also a key cytokine for FC generation and expansion, as evidenced by the FL-BM cultures and the mobilization of FCs in PB (33). FCs propagated from BMCs in vitro develop dendrites and up-regulation of activation markers. FL treatment in vivo induces the maturation of FCs. Approximately 20% of FL-FCs exhibit features of mature lymphoid DCs ($B220^-/CD11c^{bright+}/CD11b^-$) that express CD86 and 60% express a p-preDC phenotype. Notably purified FL-mobilized FCs facilitate HSC engraftment very efficiently. The mobilization of FCs by FL could represent a more efficient approach to recruit functional “facilitating” or tolerogenic cells for clinical application, especially when limited numbers of cells are available for transplantation.

purified FCs (HSC + FC group, —), p-preDC FCs (HSC + p-preDC FC group, - · -), or FCs without p-preDCs from B10.BR mice (•••••). Some recipient mice were used as irradiation controls (•••••). The cumulative survival of recipients is represented by the Kaplan-Meier method. Animals were followed for 4 mo. *, $P = 0.0165$ between the HSC + FC group and the HSC group; **, $P = 0.0006$ between the HSC + FC group and the HSC+FC without p-preDCs group.

To date, there has been only indirect evidence to demonstrate a sustained tolerogenic effect for p-preDCs in vivo. Although prolongation of solid organ allografts has been demonstrated in mice treated with enriched p-preDCs graft, sustained donor-specific tolerance has not been achieved (44). Similarly, although GVHD was decreased in occurrence and severity in BMT recipients who had an increase in p-preDCs in the donor marrow inoculum, a direct biologic role remains to be defined (20, 22). We show for the first time that p-preDCs exhibit a significant and durable graft-enhancing ability for HSCs in mismatched recipients. Notably, p-preDCs significantly enhanced engraftment of HSCs without causing GVHD. Moreover, recipients of p-preDCs facilitated HSC transplants exhibited donor-specific tolerance to skin allografts. Therefore, the tolerogenic effect of this cell population was maintained in vivo as it relates to establishing chimerism and tolerance. The fact that depletion of the p-preDCs component from the FCs total results in loss of facilitation confirms that p-preDCs are the primary component in facilitation.

It is interesting that the total FC population exhibits a significantly greater engraftment-enhancing effect on HSCs than do p-preDCs. A number of hypotheses could explain this observation. p-preDC-like cells in the FC gate may be the rare, $CD8\alpha^+$ subpopulation of the p-preDCs found in the BM, and only $CD8\alpha^+$ p-preDCs may be able to fully replace FCs in this functional biological assay. Moreover, p-preDC FCs facilitate less efficiently than total FCs, pointing to a requirement for collaborative cells and/or signals in the FC population. p-preDCs may also not be in an appropriately activated state. Given the heterogeneous nature of cells in the FC gate, it is possible that another collaborative cell population (i.e., NK cells) is required for optimal function of

p-preDCs. In support of this mechanism is the fact that activation of p-preDCs by NK cells has been reported *in vitro* (45). It is also possible that p-preDC phenotype cells within the FC gate are distinct from the bulk population of BM p-preDCs (other than activation or known maturation status). The fact that FCs produce IL-10, whereas p-preDCs do not in humans or mice, would point to an additional collaborative cell or signal in the FC population. Studies are underway to evaluate this mechanism.

In conclusion, CD8⁺/TCR⁻ FCs will have a significant impact for the clinical application of HSC-induced chimerism since tolerance can be promoted, GVHD avoided, and safe transplants allowed in mismatched recipients (10, 46, 47). Notably, we show for the first time a direct *in vivo* effect for p-preDCs in facilitating HSC engraftment and inducing durable tolerance to transplanted grafts. The identification of the cells in the FC gate, and the mechanism by which they mediate a full facilitation of HSC engraftment, will lead to novel cell-based therapeutic strategies to optimize the composition of the graft in order to reduce the morbidity of HSC transplants in mismatched recipients.

MATERIALS AND METHODS

Mice. 5–10-wk-old male B10.BR/SgSnJ (B10.BR, H-2^k), C3H/HeJ (C3H, H-2^k), C57BL/10SnJ (B10, H-2^b), BALB/c (H-2^d), or C57BL/6J (B6, H-2^b) mice were purchased from Jackson ImmunoResearch Laboratories. Rodents were maintained under pathogen-free conditions in the animal care facility at the Institute for Cellular Therapeutics, according to specific University of Louisville, Institutional Animal Care and Use Committee, and National Institutes of Health animal care guidelines.

Flt3-ligand treatment of mice. Recombinant human FL (provided by Amgen) was diluted in sterile, filtered, endotoxin-free water at a concentration of 100 µg/ml. Donor B10.BR mice were subcutaneously injected with 10 µg of FL daily for 10 d. B10.BR control mice were injected with saline only. At the end of the treatment, peripheral blood was harvested and collected into heparinized tubes.

mAb and flow cytometry. The following mAbs (all from BD Biosciences, except those labeled with APC-Cy7 from eBioscience) were used. To sort CD8⁺/TCR⁻ FCs: anti-CD8α (53–6.7) PE labeled, anti-TCR β chain (H57–597), and anti-TCR γδ chain (GL3) FITC labeled. To sort B220⁺/CD11c^{dim}/CD11b⁻ p-preDCs: anti-CD11b (M1/70) APC labeled, anti-CD45R/B220 (RA3–6B2) APC-Cy7 labeled, anti-CD11c (HL3) PE labeled, and anti-TCR β chain (H57–597), anti-TCR γδ chain (GL3), anti-CD14 (rmC5–3), anti-CD19 (1D3), anti-pan-NK cells (DX5), and anti-NK1.1 (PK136), all FITC labeled. To sort p-preDCs in the FC population (p-preDC FCs): anti-CD8α (53–6.7) PE labeled, anti-TCR β chain (H57–597), anti-TCR γδ chain (GL3) FITC labeled, anti-CD45R/B220 (RA3–6B2) APC-Cy7 labeled, anti-CD11c (HL3) PE labeled. To sort HSCs: anti-TCR β chain (H57–597), anti-TCR γδ chain (GL3), anti-Ly-6G (Gr-1), anti-CD11b, Mac-1 (M1/70), anti-CD8α (53–6.7), and anti-CD45R/B220 (RA3–6B2), all FITC labeled, anti-Ly-6A/E (Sca-1; E13–161.7) PE labeled and anti-c-Kit (CD117; 2B8) APC labeled. Reanalysis of sorted FCs: purified FCs were stained with anti-CD16/CD32 (FcγIII/II receptors; 2.4G2), anti-CD11c (HL3), anti-CD4 (RM4–5) and anti-CD19 (1D3) all APC labeled, anti-CD45R/B220 (RA3–6B2) PerCP labeled, and anti-pan-NK cells (DX5), anti-NK1.1 (PK136), anti-CD14 (rmC5–3), and anti-Ly-6G (Gr-1) FITC labeled. To analyze the activation state: anti-CD80 (B7–1; 16–10A1), anti-CD86 (B7–2; 16–10A1), and anti-I–A^b (Aβ^b; AF6–120.1) FITC labeled. For PBL typing and multilineage chimerism: anti-H–2K^b (AF6–88.5) PE or FITC labeled, anti-H–2K^b (36–7–5) PE or

FITC labeled, anti-TCR β chain (H57–597), anti-NK1.1 (PK136), anti-Ly-6G (Gr-1), anti-CD11b, Mac-1 (M1/70), and anti-CD45R/B220 (RA3–6B2) all FITC labeled.

BMC preparation. BMC preparations were performed as described previously (9). In brief, BMCs were obtained by flushing femurs and tibias from mice with cold media 199 (GIBCO BRL) containing 30 µg/ml Gentamicin (GIBCO BRL; referred to hereafter as chimera media [CM]). After washing with CM, the BMCs were resuspended to 100 × 10⁶ cells/ml in sterile cell sort media (CSM: Hank's balanced salt solution without phenol red, 2% heat-inactivated fetal calf serum, 2 µg/ml Hepes buffer, and 30 µg/ml of Gentamicin [all from GIBCO BRL]).

Culture of BMCs with FL. BMCs were resuspended at 10⁶ cells/ml in culture medium consisting of RPMI 1640 (GIBCO BRL), 10% FBS (GIBCO BRL), 1 mM sodium pyruvate (GIBCO BRL), 10 mM Hepes (GIBCO BRL), 2 mM L-glutamine (GIBCO BRL), 100 U/ml penicillin, 100 µg/ml streptomycin (GIBCO BRL), and 10⁻⁵ M 2-mercaptoethanol (Sigma-Aldrich), supplemented with human FL (100 ng/ml; gift from Amgen). After 5 d of culture, half of the medium was replaced by fresh cytokine-supplemented culture medium according to a protocol described previously (28).

Cell sorting. HSCs, FCs, and p-preDCs were sorted as described previously (9, 28, 48). HSCs were sorted for Sca-1⁺/c-Kit⁺/Lin⁻ expression, FCs were sorted for CD8α⁺/TCRαβ⁻/TCRγδ⁻ expression, and p-preDCs were sorted for CD11c^{dim}/CD11b⁻/B220⁺ expression. p-preDC FCs were isolated for CD11c⁺/B220⁺ expression in the FCs (CD8⁺/TCR⁻) gate and FCs without preDCs were sorted by excluding CD11c⁺/B220⁺ cells from the FC gate as shown in Fig. 7 A. In brief, BMCs were incubated with Ab on ice for 30 min, cells were washed twice in the CSM, filtered, and resuspended to a final concentration of 2.5 × 10⁶ cells/ml in the CSM for cell sorting. The isolation of the cell populations was performed on FACSVantage Flow Cytometers (Becton Dickinson). The populations of interest were isolated from the live lymphoid gate, and after reanalysis, only cells with a purity of >94% were used.

Phenotypic analysis of sorted FCs. Sorted FCs isolated from fresh BMCs or FL-mobilized peripheral blood, with a purity ranging from 94 to 98%, were incubated with Fc receptor block (anti-CD16/CD32) before staining with lineage-specific markers, including anti-CD4, CD11c, B220, NK1.1, DX5, CD14, Gr-1, and CD19. During reanalysis of sorted FCs, <1% of contaminating T cells (TCRαβ FITC and TCRγδ FITC) were detected, which therefore allowed the use of FITC-conjugated-specific markers for further analysis. To validate the specificity of staining, we used various conjugates of the same antibody, including CD11c, CD4, and CD19 conjugated to FITC and APC, as well as B220 conjugated with PerCP, APC, or FITC (unpublished data). To analyze the subtypes of DCs in the sorted FC population, sorted FCs were blocked and stained with CD11b FITC, CD11c APC and B220 PerCP mAb to determine the presence of myeloid preDCs (CD11c⁺/B220⁻/CD11b⁺), p-preDCs (CD11c^{dim}/B220⁺/CD11b⁻), the common precursor population for DCs (CD11c⁺/B220⁺/CD11b⁺), or mature lymphoid DCs (CD8α⁺/CD11c⁺/CD11b⁻/B220⁻). The cells were washed twice in CSM and analyzed on a FACSCalibur using Cell Quest Software (Becton Dickinson).

CpG oligodeoxynucleotides stimulation. Sorted p-preDCs or FCs were cultured for 18 h at 10⁵ cells/200 µl in 96-well round-bottom culture plates in culture medium in the presence or absence of toll-like receptor (TLR)-9 ligand, CpG ODN 1668 (TCCATGACGTTCCGATGCT; GIBCO BRL Custom Primers) at 1 µM, TLR4 ligand, LPS from *Escherichia coli* (Sigma-Aldrich) at 10 µg/ml, as described previously (28). CpG or LPS-treated or -untreated cells were subsequently assayed for: (a) the expression of DC activation/maturation cell surface markers by FACS; and (b) morphological appearance by Wright-Giemsa staining on cytopins. The

supernatant of these cultures were collected for analysis of the production of different cytokines by ELISA.

Cytospins. Cells (30,000 to 60,000) were centrifuged for 5 min at 300 rpm. The slides were air dried, fixed with methanol, and dried at room temperature. Wright-Giemsa staining was performed using the kit Hema3 according to the manufacturer's protocol (Fisher Scientific).

Transmission electron microscopy. Cells were pelleted at 1,000 *g*, fixed in situ as a pellet in 2.5% glutaraldehyde, and processed for transmission electron microscopy using standard methods. Sections of 70 nm were cut with a Reichert Ultracert S mounted on copper grids and counterstained with uranyl-acetate (2%) and lead citrate. Observations were performed using a Joel 100 cx electron microscope.

Cytokine production by ELISA. In brief, the cell-free supernatants of 12, 18, or 24 h cultured cells (FCs or p-preDCs) with or without CpG ODN or LPS were collected and kept frozen at -80°C . The amount of cytokine produced was determined by: (a) ELISA kits for mouse IFN- α (R&D Systems) and mouse TNF- α (Biosource International); and (b) multiplex for MIP-1 α (CCL3), GM-CSF, MCP-1 (CCL2), RANTES (CCL5), IFN- γ , IL-1 β , IL-2, IL-4, IL-5, IL-6, IL-10, IL-12p70, IL-9, and IL-13 on 18 h incubation supernatants from three different experiments performed by Linco Diagnostic Services.

Reconstitution of allogeneic recipients with HSCs from untreated marrow and FL-mobilized FCs. HSCs were sorted from untreated B10.BR mice (H-2^k). FCs (CD8⁺/TCR⁻) were sorted from PB of 10 d FL-treated B10.BR mice, or from untreated B10.BR mice as controls. Recipient B10 mice (H-2^b) were treated with 950 cGy of total body irradiation (TBI) using a 137-cesium source (Gamma-cell 40 Excutor; Nordion International). 6 h after irradiation, 5,000 HSCs were transplanted either alone or in combination with 30,000 FCs by lateral tail vein injection. FCs and HSCs were mixed before transplantation. A control group of irradiated mice was also established. The survival was plotted over time.

Reconstitution of allogeneic recipients with HSC \pm BM FCs, p-preDCs, and FC subpopulations. Recipient mice were given 950 cGy TBI. 6 h after irradiation, recipients were transplanted with 5,000 purified allogeneic HSCs with or without 30,000 FCs or p-preDCs resuspended in CM, or 15,000 FCs depleted of p-preDCs or 15,000 p-preDC FCs via lateral tail vein injection. A group of irradiated mice served as controls. Graft survival was estimated by the Kaplan-Meier method.

Characterization of donor multilineage engraftment by flow cytometry. Donor engraftment in the recipient was quantified by peripheral blood cell typing using flow cytometry. Specifically, two-color flow was used to determine the percentage of PBL that express H-2^b or H-2^k MHC class I antigen as described previously (49). For multilineage analysis, PBL were stained with donor-specific anti-H-2K^b-PE or anti-H-2K^k-PE mAb along with a combination of the following Ab: anti-Gr-1, anti-Mac-1, anti- $\alpha\beta$ -TCR, anti-B220, anti-NK1.1, anti-CD11c, and anti-CD19. Cells were washed, acquired, and analyzed on the FACSCalibur.

Skin grafts. Skin grafts were performed by techniques published previously (50). In brief, full-thickness skin grafts from the tail of B10.BR, B10, B6, or BALB/c mice were harvested. Full-thickness graft beds were prepared on the lateral thoracic wall. Three skin grafts (syngeneic, donor, and third-party) were placed on each animal. Each graft was separated from the others by a skin bridge of at least 3 mm. Skin grafts were covered by a double layer of petroleum gauze and a cast. The cast was removed after 7 d. Grafts were scored daily for percent rejection. Rejection was defined as complete when no residual viable graft could be detected.

Significance estimates. Survival was estimated according to the Kaplan-Meier method and tested with the log rank statistic using SPSS 12.0 for Win-

dows software. The cumulative survival estimates the percentage of mice alive after a given amount of time. All graphs of transplanted mice represent experimental animals from at least three separate days of sorting and transplantation. For the other experiments, statistical significance was determined by application of the Student's *t* test; $P < 0.05$ was considered significant.

The authors warmly thank Dr. Yong-Jun Liu for providing ideas and suggestions at the origin of this study, Simon Watkins and Dr. Christian Kaufman for the transmission electron microscopy pictures, Sherry Willer, Natalie Claudio, Michael Tanner, Barry Udis, Kathryn Laster, Brook Parke, and Lisa Colbert, and the caretakers in our animal facility for excellent technical assistance, Chris Perry for Macromedia Freehand expertise, Carolyn DeLautre for manuscript preparation, and Doug Lorenz of the Statistical Consulting Center of the University of Louisville for statistical expertise and advice.

This work is supported by National Institutes of Health (R01 HL063442) and in part by the Commonwealth of Kentucky Research Challenge Trust Fund, the Christine Kleinfert Foundation, The Jewish Hospital Foundation, and the University of Louisville Hospital.

The authors have no conflicting financial interests.

Submitted: 12 July 2004

Accepted: 15 October 2004

REFERENCES

- Ildstad, S.T., and D.H. Sachs. 1984. Reconstitution with syngeneic plus allogeneic or xenogeneic bone marrow leads to specific acceptance of allografts or xenografts. *Nature*. 307:168–170.
- Billingham, R.E., L. Brent, and P.B. Medawar. 1953. Actively acquired tolerance to foreign cells. *Nature*. 172:603–607.
- Lu, L., R.N. Shen, and H.E. Broxmeyer. 1996. Stem cells from bone marrow, umbilical cord blood and peripheral blood for clinical application: current status and future application. *Crit. Rev. Oncol. Hematol.* 22:61–78.
- Korbling, M., and P. Anderlini. 2001. Peripheral blood stem cell versus bone marrow allotransplantation: does the source of hematopoietic stem cells matter? *Blood*. 98:2900–2908.
- Champlin, R. 1990. T-cell depletion to prevent graft-versus-host disease after bone marrow transplantation. *Hematol. Oncol. Clin. North Am.* 4:687–698.
- Blazar, B.R., A.H. Filipovich, J.H. Kersey, F.M. Uckun, N.C. Ramsay, P.B. McGlave, and D.A. Valleria. 1987. T-cell depletion of donor marrow grafts: Effects on graft-versus-host disease and engraftment. Wiley-Liss, New York, NY. 381 pp.
- Drobyski, W., R. Ash, J.T. Casper, T. McAuliffe, M.M. Horowitz, C. Lawton, C. Keever, L.A. Baxter-Lowe, B. Camitta, F. Garbrecht, et al. 1994. Effect of T-cell depletion as graft-versus-host disease prophylaxis on engraftment, relapse, and disease-free survival in unrelated marrow transplantation for chronic myelogenous leukemia. *Blood*. 83:1980–1987.
- Gandy, K.L., J. Domen, H.L. Aguila, and I.L. Weissman. 1999. CD8⁺TCR⁺ and CD8⁺TCR⁻ cells in whole bone marrow facilitate the engraftment of hematopoietic stem cells across allogeneic barriers. *Immunity*. 11:579–590.
- Kaufman, C.L., Y.L. Colson, S.M. Wren, S.L. Watkins, R.L. Simmons, and S.T. Ildstad. 1994. Phenotypic characterization of a novel bone-marrow derived cell that facilitates engraftment of allogeneic bone marrow stem cells. *Blood*. 84:2436–2446.
- Colson, Y.L., K. Christopher, J. Glickman, K.N. Taylor, R. Wright, and D.L. Perkins. 2004. Absence of clinical gvhd and the in vivo induction of regulatory t cells following facilitating cell transplantation. *Blood*. 104:3829–3835.
- Grimes, H.L., C.L. Schanie, Y. Huang, D. Cramer, F. Rezzoug, I. Fugier-Vivier, and S.T. Ildstad. 2004. Graft facilitating cells are derived from hematopoietic stem cells and functionally require CD3, but are distinct from T lymphocytes. *Exp. Hematol.* 32:946–954.
- Morelli, A.E., H. Hackstein, and A.W. Thomson. 2001. Potential of tolerogenic dendritic cells for transplantation. *Semin. Immunol.* 13:323–335.
- Thomson, A.W., and L. Lu. 1999. Dendritic cells as regulators of immune reactivity: implications for transplantation. *Transplantation*. 68:1–8.

14. Guermonprez, P., J. Valladeau, L. Zitvogel, C. Thery, and S. Amigorena. 2002. Antigen presentation and T cell stimulation by dendritic cells. *Annu. Rev. Immunol.* 20:621–667.
15. Banchereau, J., F. Briere, C. Caux, J. Davoust, S. Lebecque, Y.J. Liu, B. Pulendran, and K. Palucka. 2000. Immunobiology of dendritic cells. *Annu. Rev. Immunol.* 18:767–811.
16. Liu, Y.J. 2001. Dendritic cell subsets and lineages, and their functions in innate and adaptive immunity. *Cell.* 106:259–262.
17. Shortman, K., and W.R. Heath. 2001. Immunity or tolerance? That is the question for dendritic cells. *Nat. Immunol.* 2:988–989.
18. Kalinski, P., C.M. Hilkens, E.A. Wierenga, and M.L. Kapsenberg. 1999. T-cell priming by type-1 and type-2 polarized dendritic cells: the concept of a third signal. *Immunol. Today.* 20:561–567.
19. Boonstra, A., C. Asselin-Paturel, M. Gilliet, C. Crain, G. Trinchieri, Y.J. Liu, and A. O'Garra. 2003. Flexibility of mouse classical and plasmacytoid-derived dendritic cells in directing T helper type 1 and 2 cell development: dependency on antigen dose and differential toll-like receptor ligation. *J. Exp. Med.* 197:101–109.
20. Arpinati, M., C.L. Green, S. Heimfeld, J.E. Heuser, and C. Anasetti. 2000. Granulocyte-colony stimulating factor mobilizes T helper 2-inducing dendritic cells. *Blood.* 95:2484–2490.
21. Rossi, M., M. Arpinati, D. Rondelli, and C. Anasetti. 2002. Plasmacytoid dendritic cells: do they have a role in immune responses after hematopoietic cell transplantation? *Hum. Immunol.* 63:1194–1200.
22. Liu, Y.J., and B. Blom. 2000. Introduction: TH2-inducing DC2 for immunotherapy. *Blood.* 95:2482–2483.
23. Siegal, F.P., N. Kadowaki, M. Shodell, P.A. Fitzgerald-Bocarsly, K. Shah, S. Ho, S. Antonenko, and Y.J. Liu. 1999. The nature of the principal type 1 interferon-producing cells in human blood. *Science.* 284:1835–1837.
24. Asselin-Paturel, C., A. Boonstra, M. Dalod, I. Durand, N. Yessaad, C. Dezutter-Dambuyant, A. Vicari, A. O'Garra, C. Biron, F. Briere, and G. Trinchieri. 2001. Mouse type I IFN-producing cells are immature APCs with plasmacytoid morphology. *Nat. Immunol.* 2:1144–1150.
25. Bjorck, P. 2001. Isolation and characterization of plasmacytoid dendritic cells from Flt3 ligand and granulocyte-macrophage colony-stimulating factor-treated mice. *Blood.* 98:3520–3526.
26. Fonteneau, J.F., M. Gilliet, M. Larsson, I. Dasilva, C. Munz, Y.J. Liu, and N. Bhardwaj. 2003. Activation of influenza virus-specific CD4+ and CD8+ T cells: a new role for plasmacytoid dendritic cells in adaptive immunity. *Blood.* 101:3520–3526.
27. Kadowaki, N., S. Antonenko, J.Y. Lau, and Y.J. Liu. 2000. Natural interferon alpha/beta-producing cells link innate and adaptive immunity. *J. Exp. Med.* 192:219–226.
28. Gilliet, M., A. Boonstra, C. Paturel, S. Antonenko, X.L. Xu, G. Trinchieri, A. O'Garra, and Y.J. Liu. 2002. The development of murine plasmacytoid dendritic cell precursors is differentially regulated by FLT3-ligand and granulocyte/macrophage colony-stimulating factor. *J. Exp. Med.* 195:953–958.
29. Brawand, P., D.R. Fitzpatrick, B.W. Greenfield, K. Brasel, C.R. Maliszewski, and T. De Smedt. 2002. Murine plasmacytoid pre-dendritic cells generated from Flt3 ligand-supplemented bone marrow cultures are immature APCs. *J. Immunol.* 169:6711–6719.
30. O'Keeffe, M., H. Hochrein, D. Vremec, I. Caminschi, J.L. Miller, E.M. Anders, L. Wu, M.H. Lahoud, S. Henri, B. Scott, et al. 2002. Mouse plasmacytoid cells: long-lived cells, heterogeneous in surface phenotype and function, that differentiate into CD8+ dendritic cells only after microbial stimulus. *J. Exp. Med.* 196:1307–1319.
31. Martin, P., G.M. Del Hoyo, F. Anjuere, C.F. Arias, H.H. Vargas, L. Fernandez, V. Parrillas, and C. Ardavin. 2002. Characterization of a new subpopulation of mouse CD8alpha(+) B220(+) dendritic cells endowed with type 1 interferon production capacity and tolerogenic potential. *Blood.* 100:383–390.
32. Maraskovsky, E., K. Brasel, M. Teepe, E.R. Roux, S.D. Lyman, K. Shortman, and H.J. McKenna. 1996. Dramatic increase in the numbers of functionally mature dendritic cells in Flt3 ligand-treated mice: multiple dendritic cell subpopulations identified. *J. Exp. Med.* 184:1953–1962.
33. Neipp, M., T. Zorina, M.A. Domenick, B.G. Exner, and S.T. Ildstad. 1998. Effect of FLT3 ligand and granulocyte colony-stimulating factor on expansion and mobilization of facilitating cells and hematopoietic stem cells in mice: kinetics and repopulating potential. *Blood.* 92:3177–3188.
34. Bilsborough, J., T.C. George, A. Normont, and J.L. Viney. 2003. Mucosal CD8alpha+ DC, with a plasmacytoid phenotype, induce differentiation and support function of T cells with regulatory properties. *Immunology.* 108:481–492.
35. Nikolic, T., G.M. Dingjan, P.J. Leenen, and R.W. Hendriks. 2002. A subfraction of B220(+) cells in murine bone marrow and spleen does not belong to the B cell lineage but has dendritic cell characteristics. *Eur. J. Immunol.* 32:686–692.
36. Hochrein, H., M. O'Keeffe, and H. Wagner. 2002. Human and mouse plasmacytoid dendritic cells. *Hum. Immunol.* 63:1103–1110.
37. Kuwana, M., J. Kaburaki, T.M. Wright, Y. Kawakami, and Y. Ikeda. 2001. Induction of antigen-specific human CD4(+) T cell anergy by peripheral blood DC2 precursors. *Eur. J. Immunol.* 31:2547–2557.
38. Risoan, M.C., V. Soumelis, N. Kadowaki, G. Grouard, F. Briere, M.R. de Waal, and Y.J. Liu. 1999. Reciprocal control of T helper cell and dendritic cell differentiation. *Science.* 283:1183–1186.
39. Kuwana, M. 2002. Induction of anergic and regulatory T cells by plasmacytoid dendritic cells and other dendritic cell subsets. *Hum. Immunol.* 63:1156–1163.
40. de Heer, H.J., H. Hammad, T. Soullie, D. Hijdra, N. Vos, M. Willart, H. Hoogsteden, and N. Lambrecht. 2004. Essential role of lung plasmacytoid dendritic cells in preventing asthmatic reactions to harmless inhaled antigen. *J. Exp. Med.* 200:89–98.
41. Moore, K.W., M.R. de Waal, R.L. Coffman, and A. O'Garra. 2001. Interleukin-10 and the interleukin-10 receptor. *Annu. Rev. Immunol.* 19:683–765.
42. Wakkach, A., N. Fournier, V. Brun, J.P. Breittmayer, F. Cottrez, and H. Groux. 2003. Characterization of dendritic cells that induce tolerance and T regulatory 1 cell differentiation in vivo. *Immunity.* 18:605–617.
43. Wakkach, A., F. Cottrez, and H. Groux. 2001. Differentiation of regulatory T cells 1 is induced by CD2 costimulation. *J. Immunol.* 167:3107–3113.
44. O'Connell, P.J., W. Li, Z. Wang, S.M. Specht, A.J. Logar, and A.W. Thomson. 2002. Immature and mature CD8alpha+ dendritic cells prolong the survival of vascularized heart allografts. *J. Immunol.* 168:143–154.
45. Kadowaki, N., S. Antonenko, S. Ho, M.C. Risoan, V. Soumelis, S.A. Porcelli, L.L. Lanier, and Y.J. Liu. 2001. Distinct cytokine profiles of neonatal natural killer T cells after expansion with subsets of dendritic cells. *J. Exp. Med.* 193:1221–1226.
46. Colson, Y.L., and S.T. Ildstad. 1997. Characterization of two unique cell surface molecules on the facilitating cell. *Surg. Forum.* 48:481–484.
47. Schuchert, M.J., R.D. Wright, and Y.L. Colson. 2000. Characterization of a newly discovered T-cell receptor beta-chain heterodimer expressed on a CD8+ bone marrow subpopulation that promotes allogeneic stem cell engraftment. *Nat. Med.* 6:904–909.
48. Huang, Y., F. Rezzoug, P.M. Chilton, H.L. Grimes, D.E. Cramer, and S.T. Ildstad. 2004. Matching at the MHC class I K locus is essential for long-term engraftment of purified hematopoietic stem cells: a role for host NK cells in regulating HSC engraftment. *Blood.* 104:873–880.
49. Xu, H., P.M. Chilton, Y. Huang, C.L. Schanie, and S.T. Ildstad. 2004. Production of donor T cells is critical for induction of donor-specific tolerance and maintenance of chimerism. *J. Immunol.* 172:1463–1471.
50. Billingham, M.E. 1994. Pathology and etiology of chronic rejection of the heart. *Clin. Transplant.* 8:289–292.