

SCIENTIFIC REPORTS



OPEN

A systematic analysis of the role of GGDEF-EAL domain proteins in virulence and motility in *Xanthomonas oryzae* pv. *oryzicola*

Chao Wei^{1,*}, Wendi Jiang^{1,*}, Mengran Zhao¹, Junjie Ling¹, Xin Zeng¹, Jun Deng¹, Dongli Jin¹, John Maxwell Dow² & Wenxian Sun¹

Received: 02 November 2015

Accepted: 08 March 2016

Published: 07 April 2016

The second messenger c-di-GMP is implicated in regulation of various aspects of the lifestyles and virulence of Gram-negative bacteria. Cyclic di-GMP is formed by diguanylate cyclases with a GGDEF domain and degraded by phosphodiesterases with either an EAL or HD-GYP domain. Proteins with tandem GGDEF-EAL domains occur in many bacteria, where they may be involved in c-di-GMP turnover or act as enzymatically-inactive c-di-GMP effectors. Here, we report a systematic study of the regulatory action of the eleven GGDEF-EAL proteins in *Xanthomonas oryzae* pv. *oryzicola*, an important rice pathogen causing bacterial leaf streak. Mutational analysis revealed that XOC_2335 and XOC_2393 positively regulate bacterial swimming motility, while XOC_2102, XOC_2393 and XOC_4190 negatively control sliding motility. The Δ XOC_2335/XOC_2393 mutant that had a higher intracellular c-di-GMP level than the wild type and the Δ XOC_4190 mutant exhibited reduced virulence to rice after pressure inoculation. *In vitro* purified XOC_4190 and XOC_2102 have little or no diguanylate cyclase or phosphodiesterase activity, which is consistent with unaltered c-di-GMP concentration in Δ XOC_4190. Nevertheless, both proteins can bind to c-di-GMP with high affinity, indicating a potential role as c-di-GMP effectors. Overall our findings advance understanding of c-di-GMP signaling and its links to virulence in an important rice pathogen.

Cyclic diguanylate (c-di-GMP) was initially discovered as an allosteric activator of cellulose synthesis in *Gluconacetobacter xylinus*^{1,2}. The molecule is now recognized as an universal second messenger in bacteria that regulates a wide range of functions including cell differentiation, bacterial adhesion and biofilm formation, bacterial motility, colonization of host tissues and virulence^{3,4}. The c-di-GMP-mediated signaling network is complex and regulation can occur at multiple levels to include transcription, by binding to transcription factors such as FleQ⁵, post-transcriptional, such as binding to GEMM RNAs⁶, and at the posttranslational level, such as in the regulation of Pel polysaccharide synthesis^{7,8}. Cyclic di-GMP is formed from two GTP molecules by diguanylate cyclases (DGCs) that have a GGDEF domain and is broken into pGpG or GMP by phosphodiesterases (PDEs) containing either an EAL or HD-GYP domain⁴. These domains involved in c-di-GMP metabolism are widely present in Gram-negative bacterial proteins. For example, the *Escherichia coli* K-12 strain contains 29 GGDEF/EAL domain proteins, whereas *Vibrio cholerae* and *Pseudomonas aeruginosa* has 53 and 38 such proteins, respectively^{9,10}. By contrast, the HD-GYP proteins are less common and even absent in some bacterial species¹¹. These c-di-GMP metabolism proteins precisely modulate intracellular concentrations of c-di-GMP, and thus alter phenotypes through regulating different signaling pathways¹².

A major sub-group of proteins involved in c-di-GMP signaling contain both GGDEF and EAL domains arranged in tandem¹³. Several such proteins have been demonstrated to have both DGC and PDE enzymatic activities; for example MsDGC-1 in *Mycobacterium smegmatis*¹⁴, Lpl0329 in *Legionella pneumophila*¹⁵, and ScrC in *Vibrio parahaemolyticus*¹⁶. In many cases however, one of the two domains in the GGDEF-EAL proteins is catalytically inactive. For example, AxDGC2 in *G. xylinus* only displays the DGC activity¹⁷, whereas CC3396,

¹Department of Plant Pathology and the Ministry of Agriculture Key Laboratory for Plant Pathology, China Agricultural University, Beijing, China. ²School of Microbiology, BioSciences Institute, University College Cork, Cork, Ireland. *These authors contributed equally to this work. Correspondence and requests for materials should be addressed to W.S. (email: wxs@cau.edu.cn)

a GGDEF-EAL protein from *Caulobacter crescentus*, has only the PDE activity¹⁸. The inactive GGDEF or EAL domains of these proteins may act in a regulatory capacity. The DGC-inactive GEDEF domain of CC3396 is able to bind GTP and activates the PDE activity in the neighboring EAL domain¹⁸. The third situation is that both domains are enzymatically inactive but instead function as c-di-GMP effectors. For example, LapD from *Pseudomonas fluorescens* serves as a high affinity c-di-GMP receptor via a degenerate EAL domain and controls biofilm formation through regulating localization of the large cell surface adhesin LapA^{19,20}. Another GGDEF-EAL protein Filp in *Xanthomonas oryzae* pv. *oryzae* (*Xoo*) also acts as the receptor of c-di-GMP that binds to the degenerate EAL domain with high affinity²¹. Mutation of the *filp* gene in *Xoo* attenuates bacterial virulence²¹. Recently, it was demonstrated in *Xylella fastidiosa* that a Tn5 insertion mutant of *PD1671*, which encodes a putative GGDEF-EAL protein, has a hypervirulent phenotype in grapevines. This negative effect of *PD1671* on virulence was attributed to enhanced expression of *gum* genes leading to increased production of the fastidious exopolysaccharide and associated biofilm formation²².

X. oryzae pv. *oryzicola* (*Xoc*) causes bacterial leaf streak (BLS) in rice, one of the most important bacterial diseases in subtropical Asia. BLS has expanded rapidly in South China and South-East Asia; no resistance genes to this disease are available²³. Although BLS disease symptoms are very similar to those of another important rice disease, bacterial leaf blight caused by *Xoo*, the two causal pathogens have different infection processes and styles. *Xoc* initially enters leaf tissues of rice through stomata or wounds, and then colonizes the intercellular space of mesophyll while *Xoo* infects leaf through water pores and causes a systemic vascular disease^{23,24}. Genome-wide mutational analyses have revealed multiple factors that contribute to *Xoc* virulence. These factors include type III secretion, lipopolysaccharide synthesis, type IV pilus and twitching motility, carbohydrate synthesis and two-component regulation^{25,26}. As in other xanthomonads, c-di-GMP associated signalling pathways are also implicated in *Xoc* virulence. In *X. campestris* pv. *campestris*, multiple GGDEF/EAL/HD-GYP domain proteins have shown to contribute to virulence and environmental adaptation²⁷. The HD-GYP domain regulator RpfG acts together with the sensor kinase RpfC in a two-component system to regulate the synthesis of particular virulence factors in response to the diffusible signal factor DSF^{28,29,30}. Similarly, deletion of *rpfG* in *Xoc* results in reduced virulence³¹, suggesting an important role for c-di-GMP signaling. The *Xoc* BLS256 genome encodes 32 GGDEF/EAL/HD-GYP proteins with a potential role in c-di-GMP metabolism and perception³¹. No functional study on GGDEF and/or EAL domain-containing proteins in *Xoc* has been reported so far however.

In the present study, we constructed a panel of strains each with a deletion of one of the eleven genes that encode GGDEF-EAL proteins in *Xoc*. The effects of these mutations on virulence-associated phenotypes and virulence were systematically investigated. Four of these proteins (*XOC_2102*, *XOC_2335*, *XOC_2393*, and *XOC_4190*) influenced motility and one of them, *XOC_4190*, influenced virulence. We further demonstrated that *in vitro* purified *XOC_4190* and *XOC_2102* were enzymatically inactive, but were able to bind to c-di-GMP with high affinity. The findings add to an understanding of c-di-GMP signaling and its links to virulence in this important rice pathogen.

Results

A panel of deletion mutants for eleven genes encoding GGDEF-EAL domain-containing proteins in *Xoc*. The *Xoc* BLS256 genome encodes eleven tandem GGDEF-EAL domain-containing proteins³² (see Supplementary Fig. S1). Most of these proteins have additional sensory and signal transduction domains. Accordingly, *XOC_1633*, *XOC_2102*, *XOC_2277* and *XOC_2395* contain PAS domains that have been shown to sense diverse changes in environmental or cellular cues, such as light, redox state and oxygen³³; *XOC_2179*, *XOC_2277* and *XOC_2466* carry GAF domains that in other proteins have been implicated in small ligand binding and protein-protein interactions³⁴; *XOC_2120* and *XOC_2944* contain HAMP domains that may be associated with plasma membrane localization and signaling; *XOC_2335* contains three novel conserved MHYT domains with a likely signaling function³⁵; and *XOC_2102*, *XOC_2393* and *XOC_4190* have REC domains and may function as regulators in two-component systems^{36,37}. These functional domains in the proteins indicate that their activities in cyclic di-GMP turnover or perception are responsive to environmental cues^{9,12}. Deletion mutants were constructed for the eleven genes encoding these proteins following the strategy described in the Materials and Methods section and were listed in Supplementary Table S1. All mutants used for phenotypic studies were confirmed by Southern blot analyses (see Supplementary Fig. S2).

***XOC_2335* and *XOC_2393* positively regulate swimming motility.** Swimming motility is a major survival mechanism of most Gram-negative bacteria. In bacteria, high level of c-di-GMP often suppresses swimming motility¹¹. Therefore, the panel of mutants was first tested for swimming motility on semisolid (0.2% agar) medium plates. The results showed that the swimming motility of ΔXOC_{2335} and ΔXOC_{2393} was attenuated by ~30% and ~20% compared with the wild-type strain (Fig. 1a). By contrast, other mutants displayed swimming motility similar to the wild type (Fig. 1a). The complementation of ΔXOC_{2335} and ΔXOC_{2393} strains with plasmid-borne full-length genes restored swimming motility to wild type or near wild-type level (Fig. 1a). Since both *XOC_2335* and *XOC_2393* regulate swimming motility, a double mutant $\Delta XOC_{2335}/XOC_{2393}$ was constructed to investigate genetically the relationship between the two proteins in the control of swimming motility. As shown in Fig. 1b, the swimming ability of $\Delta XOC_{2335}/XOC_{2393}$ was similar to that of the mutant ΔXOC_{2335} and was lower than that of ΔXOC_{2393} (Fig. 1b). The results demonstrated that *XOC_2335* and *XOC_2393* positively regulate the swimming motility of *Xoc*, with *XOC_2335* having the predominant effect.

***XOC_2102*, *XOC_2393* and *XOC_4190* negatively regulate sliding motility.** C-di-GMP signaling has been also demonstrated to be involved in control of type IV pili (T4P)-dependent motility in bacteria¹². T4P is a thin filamentous structure present on outer surfaces of many bacteria. T4P has been shown to participate in twitching, sliding and several other important physiological processes such as adherence to surfaces³⁸. The

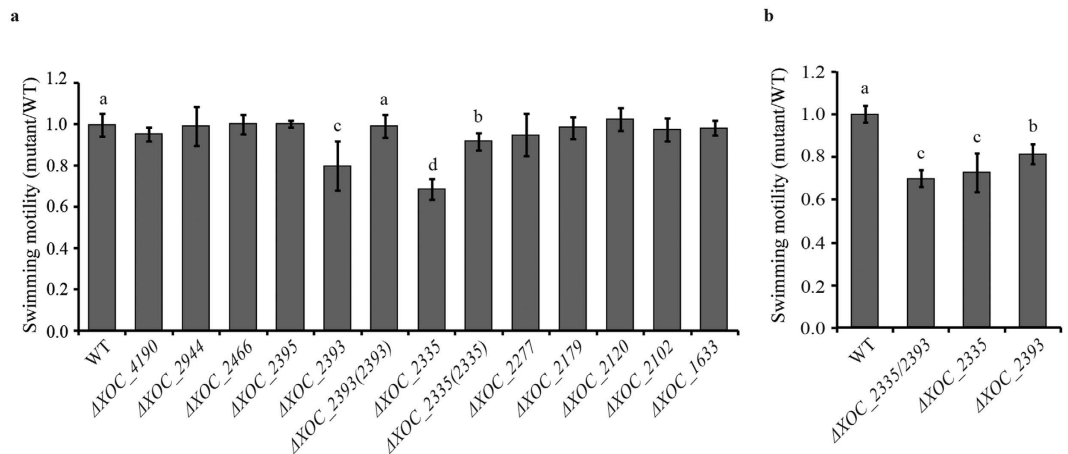


Figure 1. Effects of mutation of individual genes encoding GGDEF-EAL proteins on the swimming motility of *Xoc*. (a) The swimming motility of ΔXOC_2335 and ΔXOC_2393 was significantly reduced compared with that of the wild-type and other gene-deletion strains. The complementation strains $\Delta XOC_2335(2335)$ and $\Delta XOC_2393(2393)$ with plasmid-borne full-length genes restored the swimming motility nearly to or completely to the wild-type level, respectively. (b) The double-gene deletion mutant $\Delta XOC_2335/XOC_2393$ exhibited a similar swimming ability to the ΔXOC_2335 mutant. The swimming motility of different *Xoc* strains was evaluated on semisolid plates with 0.2% noble agar after incubating at 28 °C for 4 d. The ratios of colony diameter of the mutant strains to the wild type were shown. Bars are means \pm standard error (SE). The letters (a–d) indicate significant difference ($P < 0.05$) by Duncan's multiple range test.

panel of mutants was tested for sliding motility on 0.6% agar SB medium plates. The ΔXOC_2102 , ΔXOC_2393 and ΔXOC_4190 mutants had enhanced motility with colony diameters $\sim 58\%$, $\sim 52\%$ and $\sim 42\%$ larger than the wild-type strain. Other mutants had no significant alteration in sliding motility. Complementation with the full-length *XOC_2102*, *XOC_2393* or *XOC_4190* gene restored the sliding motility of ΔXOC_2102 , ΔXOC_2393 and ΔXOC_4190 to the wild-type level, respectively (Fig. 2a). Similarly, the $\Delta XOC_2393/XOC_2335$ mutant had a larger colony diameter on SB medium plates than the wild-type strain. The full-length *XOC_2393* gene, but not *XOC_2335*, restored the sliding motility of the double-gene deletion mutant (Fig. 2b). The results indicate that *XOC_2102*, *XOC_2393* and *XOC_4190* negatively regulate the sliding motility of *Xoc*.

GGDEF-EAL domain proteins do not significantly affect EPS production, protease secretion and biofilm formation. Bacterial biofilm formation, EPS production and secretion of proteases are all important virulence factors in *Xanthomonas* spp.^{39,40}. When the panel of single gene-deletion mutants was tested for these virulence-associated phenotypes, all strains produced similar amounts of EPS and biofilm biomass as the wild-type strain (see Supplementary Fig. S3). Similarly, the ability to synthesize and secrete proteases was not apparently altered in these mutants (see Supplementary Fig. S3). In addition, the double $\Delta XOC_2335/XOC_2393$ mutant exhibited similar phenotypes in EPS production, biofilm formation and protease secretion to the wild-type and single gene-deletion mutant strains (see Supplementary Fig. S3).

***XOC_2335*, *XOC_2393* and *XOC_4190* are involved in regulating virulence to rice.** To investigate the roles of GGDEF-EAL proteins in *Xoc* virulence, the panel of mutants was pressure-inoculated into the leaves of rice plants. The length of disease lesions formed on the inoculated leaves was measured to evaluate bacterial virulence. The ΔXOC_4190 mutant was the only single-gene deletion strain with altered virulence, causing disease lesions shorter than the wild type (Fig. 3a). The ΔXOC_2335 and ΔXOC_2393 strains, which did show alteration in swimming ability (see above), produced disease lesions of similar sizes to the wild type. These experiments were extended to test the virulence of the $\Delta XOC_2335/XOC_2393$ double mutant. The disease lesions caused by this strain were significantly shorter than those by the wild-type strain (Fig. 3b, see Supplementary Fig. S4). Complementation of the $\Delta XOC_2335/XOC_2393$ mutant with either *XOC_2335* or *XOC_2393* restored virulence of the mutant to the wild-type level (Fig. 3b, see Supplementary Fig. S4). Collectively, the results indicate that *XOC_4190*, *XOC_2335* and *XOC_2393* all contribute to virulence of *X. oryzae* pv. *oryzicola* to rice. Our previous study demonstrated that the *Xoc* $\Delta rpfG$ mutant had an altered expression of *hrp* regulon³¹. Therefore, we further determined the expression level of *hrpA*, *hrpG* and *hrpX* in the $\Delta XOC_2335/XOC_2393$ mutant using quantitative real-time reverse transcription PCR (qRT-PCR). The results showed that simultaneous deletion of *XOC_2335* and *XOC_2393* significantly increased the expression of *hrpA*, *hrpG* and *hrpX* under type III secretion-inducing conditions (Fig. 3c). Complementation of the double mutant by expression of *XOC_2335* and *XOC_2393* *in trans* restored the expression of *hrpA*, *hrpG* and *hrpX* to the wild type or near to wild-type level (Fig. 3c). These results imply that *XOC_2335* and *XOC_2393* act synergistically and negatively control the expression of the type III secretion system (T3SS).

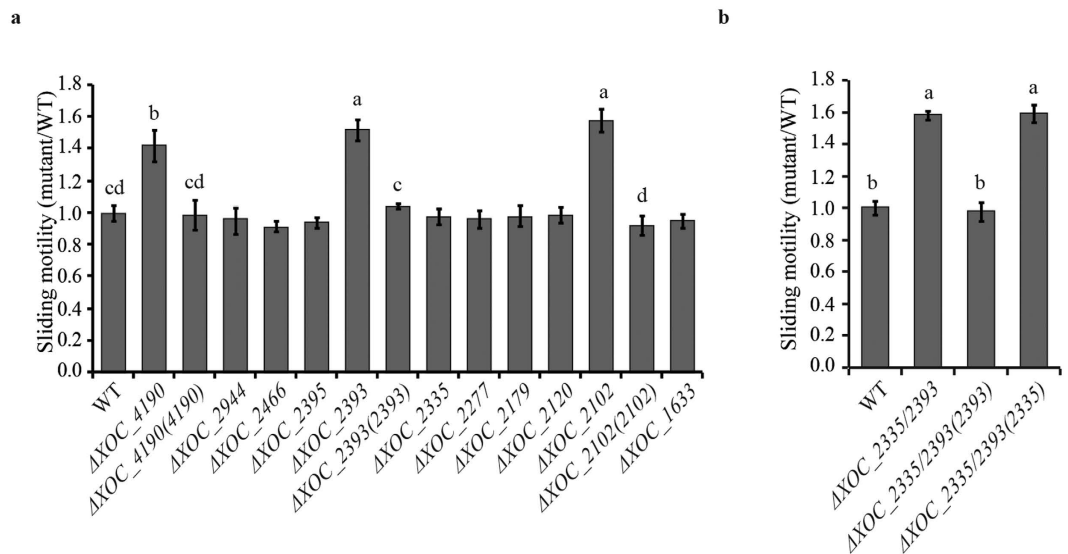


Figure 2. Effects of mutations of GGDEF-EAL protein-encoding genes on sliding motility of *Xoc*. The sliding motility of ΔXOC_{2102} , ΔXOC_{2393} and ΔXOC_{4190} was significantly increased compared with that of the wild-type strain. The complementation strains $\Delta XOC_{2102}(2102)$, $\Delta XOC_{2393}(2393)$ and $\Delta XOC_{4190}(4190)$ restored sliding motility to the wild-type level. (b) The sliding motility of $\Delta XOC_{2335}/XOC_{2393}$ was significantly increased compared with the wild type and was restored by the full-length *XOC_{2393}* gene, but not by the full-length *XOC_{2335}* gene. The sliding motility of different strains was evaluated on SB medium plates with 0.6% noble agar after incubating at 28 °C for 4 d. The ratios of colony diameter of the mutant strains to the wild type were shown. Means \pm SE are shown. The letters (a–d) indicate significant difference ($P < 0.05$) by Duncan's multiple range test.

Both GGDEF and EAL motifs of *XOC_{2335}* are required for regulation of swimming motility.

The phenotypic analyses indicate a role for *XOC_{4190}*, *XOC_{2335}*, *XOC_{2393}* and *XOC_{2102}* in virulence or motility of *Xoc*. As outlined above, proteins that contain tandem GGDEF and EAL domains can have DGC and/or PDE enzymatic activities. In some cases, both domains are enzymatically inactive but instead function as c-di-GMP effectors and/or are involved in protein-protein interactions. We used bioinformatic, genetic, biochemical and functional analyses (to include c-di-GMP binding) to reveal the possible mechanisms by which regulation by these different *Xoc* proteins may occur.

In silico analysis revealed that the GGDEF motif of *XOC_{2335}* is degenerate, with the non-canonical GADEF motif at the active site. In contrast, all of the active site residues in the EAL domain¹² were conserved, suggesting that overall *XOC_{2335}* has a PDE activity. To determine the importance of the EAL motif for *XOC_{2335}* function, a construct expressing a variant with EAA rather than EAL was made via site-directed mutagenesis. Complementation studies with this construct demonstrated that the *XOC_{2335}^{EAL-EAA}* variant was unable to restore swimming motility of ΔXOC_{2335} to the wild-type level (Fig. 4a). Another construct with the GADEF motif replaced by GAAAF in *XOC_{2335}* was used to investigate the importance of the GGDEF motif. Similarly, ΔXOC_{2335} expressing the *XOC_{2335}^{GADEF-GAAAF}* variant had a similar swimming ability to the gene-deletion mutant (Fig. 4a). To confirm expression, constructs expressing variant proteins carrying HA tags were also made, allowing detection via immunoblotting. The results showed that the variant proteins with point mutations and the wild-type protein were all well expressed in *Xoc* (Fig. 4b). Furthermore, we demonstrated that expression of truncated *XOC_{2335}*-HA proteins, including *XOC_{2335}\Delta E* without EAL domain or *XOC_{2335}\Delta G* lacking GGDEF domain, in ΔXOC_{2335} did not restore swimming motility of the mutant (see Supplementary Fig. S5). Complementation analyses using the *XOC_{2335}* variants demonstrated that both non-canonical GADEF and conserved EAL motifs are essential for *XOC_{2335}* function *in vivo*. Unfortunately, multiple attempts to express and purify *XOC_{2335}* in *E. coli* failed because the protein was insoluble, precluding further studies.

The GGDEF and EAL domains of *XOC_{2102}* and *XOC_{4190}* are degenerate and enzymatically inactive.

Bioinformatic analysis indicates that the GGDEF and EAL domains of both *XOC_{2102}* and *XOC_{4190}* are degenerate, with the variant motifs NDNST and QVL respectively in *XOC_{4190}* and GEHSF and QAF respectively in *XOC_{2102}*. To experimentally verify these predictions, *XOC_{2102}* and *XOC_{4190}* with N-terminal His6-tags were expressed in *E. coli* and the recombinant proteins were purified as described in Materials and Methods. The purified proteins were first tested for the PDE activity through colorimetric assay. In this assay, the PDE activity was evaluated by the hydrolysis of the colorless substrate, bis(*p*-nitrophenyl) phosphate, into yellow *p*-nitrophenol that can be detected spectrophotometrically at 410 nm. Incubation of His6-*XOC_{2102}* or His6-*XOC_{4190}* with bis(*p*-nitrophenyl) phosphate did not give production of *p*-nitrophenol that was not significantly different from the mock control (no enzyme) (Fig. 5a,b). As a positive control, RpfG efficiently converted bis(*p*-nitrophenyl) phosphate into *p*-nitrophenol (Fig. 5a,b). The DGC or PDE activity of

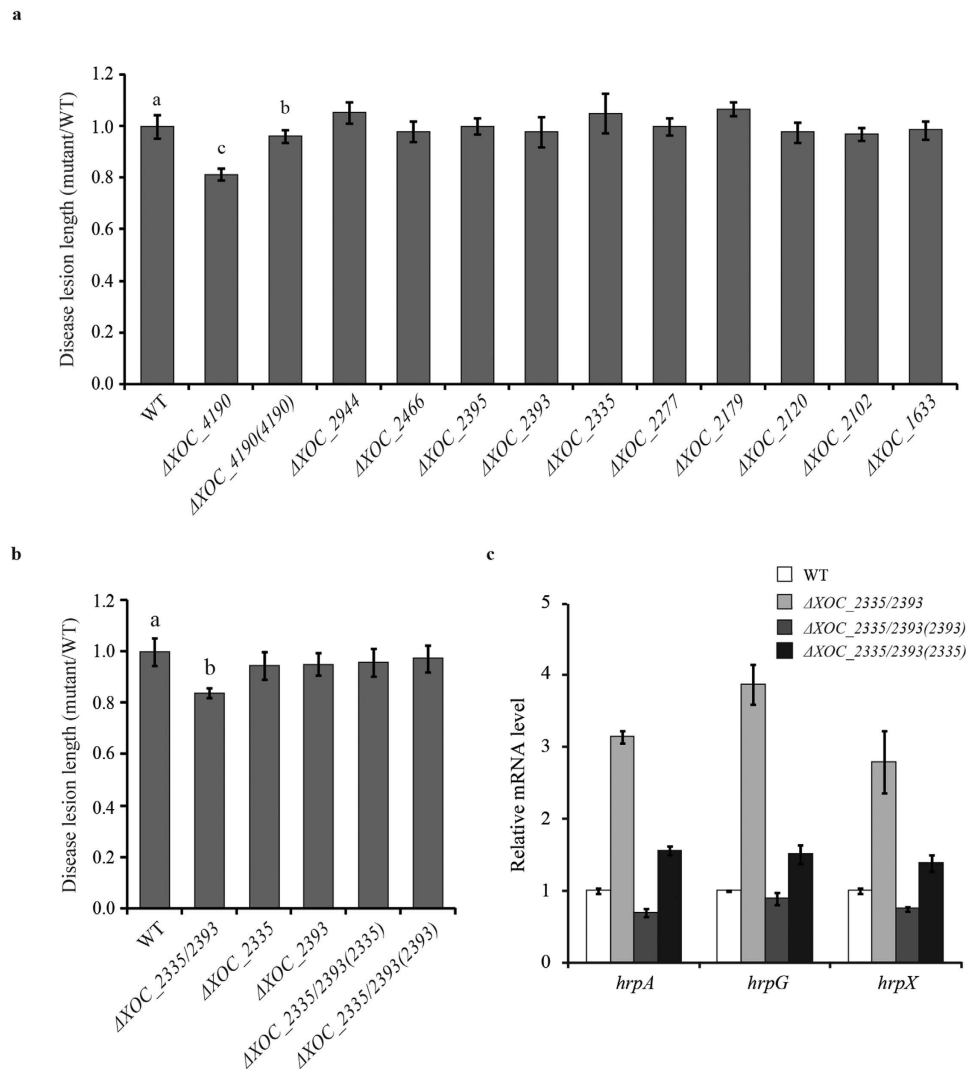


Figure 3. The effects of mutation of GGDEF-EAL protein-encoding genes on virulence of *X. oryzae* pv. *oryzicola* to rice. (a) The lesion length on the ΔXOC_{4190} -inoculated leaves of rice cv. Shanyou 63 was significantly shorter than that caused by the wild-type strain. Virulence of the ΔXOC_{4190} mutant was restored by the plasmid-borne full-length *XOC_{4190}* gene. Other single-gene deletion mutants have no altered virulence to rice compared with the wild type. (b) The lesion length caused by the $\Delta XOC_{2335}/XOC_{2393}$ double mutant was significantly shorter than that caused by the wild-type strain. Both *XOC_{2335}* and *XOC_{2393}* can restore virulence of the double-gene deletion mutant to the wild-type level. The length of disease lesions was measured at 14 d after pressure inoculation of the wild-type, mutant and complemented strains, respectively. The ratios of disease lesion length caused by the mutant strains to that caused by the wild-type strain were shown. Data are presented as means \pm SE. The letters (a,b) indicate significant difference ($P < 0.05$) by Duncan's multiple range test. (c) The effect of double-gene deletion of *XOC_{2335}* and *XOC_{2393}* on the expression of *hrp* genes in *Xoc*. Expression of *hrpA*, *hrpG* and *hrpX* in the wild-type (WT), $\Delta XOC_{2335}/2393$, $\Delta XOC_{2335}/2393(2393)$, $\Delta XOC_{2335}/2393(2335)$ strains was detected by qRT-PCR. 16S RNA was used as an internal control for data analyses. A significant increase of *hrpA*, *hrpG* and *hrpX* mRNA expression was detected in $\Delta XOC_{2335}/2393$ compared with the wild-type and complementation strains.

His6-*XOC_{2102}* and His6-*XOC_{4190}* was also tested by reverse phase high-performance liquid chromatography (HPLC) separation of reaction mixtures in which the purified proteins were incubated with GTP or *c*-di-GMP. No synthesis or degradation of *c*-di-GMP was detected under our experimental conditions (Fig. 5c–f). By contrast, a significant amount of the degraded product pGpG was produced when RpfG was incubated with *c*-di-GMP (Fig. 5c)³¹. Taken together, these results indicate that *XOC_{2102}* and *XOC_{4190}* with degenerate GGDEF and EAL domains are enzymatically inactive.

***XOC_{2102}* and *XOC_{4190}* bind to *c*-di-GMP *in vitro*.** As pointed out above, proteins containing degenerate GGDEF and EAL domains can serve as *c*-di-GMP receptors^{19,41}. Isothermal titration calorimetry (ITC) was performed to assess the binding of *c*-di-GMP to *XOC_{2102}* and *XOC_{4190}*. In this assay, the purified

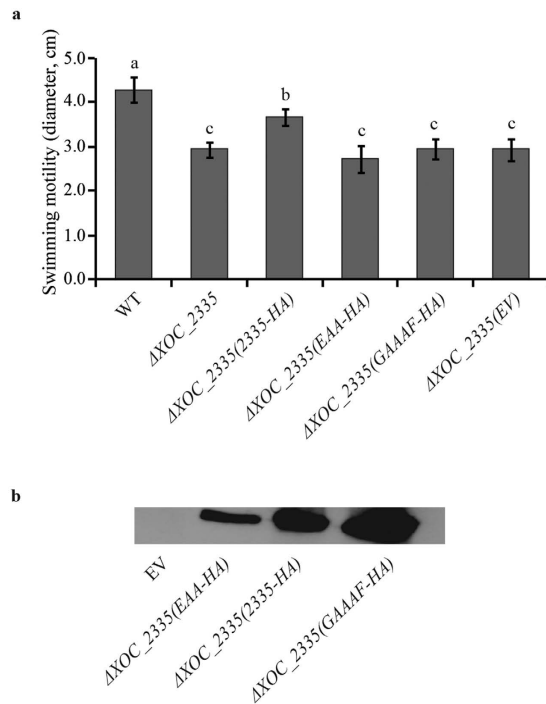


Figure 4. Point mutations in the GGDEF or EAL motifs of XOC_2335 abolish its function in the regulation of swimming motility. (a) The gene variant constructs with point mutations encoding XOC_2335^{GGDEF-G44A}-HA or XOC_2335^{EAL-E4A}-HA variant proteins did not complement the swimming motility of ΔXOC_{2335} while the XOC_2335-HA construct partially restores the swimming motility of ΔXOC_{2335} . The colony diameters of different *Xoc* strains cultured on semisolid plates with 0.2% noble agar were shown. WT, the wild-type strain. (b) Expression of HA-tagged XOC_2335 and its variants XOC_2335^{GGDEF-G44A} or XOC_2335^{EAL-E4A} in *Xoc* was detected by western blot analysis with an anti-HA antibody. EV indicates the wild-type strain transformed with the empty vector pVSP61 as negative control. The letters (a–c) indicate significant difference ($P < 0.05$) by Duncan's multiple range test.

recombinant His6-XOC_2102 and His6-XOC_4190 were titrated with c-di-GMP at room temperature. The dissociation constants (K_d) were determined after analysis of the normalized ITC curve by the Origin software⁴². The data indicate that XOC_2102 binds to c-di-GMP with a K_d of $2.90 \pm 0.13 \mu\text{M}$, and that XOC_4190 binds to c-di-GMP with a K_d of $4.59 \pm 0.36 \mu\text{M}$ (Fig. 6a,b).

To further investigate c-di-GMP binding to XOC_4190, two truncated proteins, XOC_4190 Δ G lacking the GGDEF domain and XOC_4190 Δ E without the EAL domain, were expressed and purified (Fig. 6c). Both truncated proteins were investigated for c-di-GMP binding via ITC assays. It was shown that XOC_4190 Δ G still bound to c-di-GMP with a K_d of $4.46 \pm 0.28 \mu\text{M}$, while XOC_4190 Δ E completely lost the c-di-GMP binding ability (Fig. 6d,e). The results indicate that the EAL domain, but not the GGDEF domain is required for binding of c-di-GMP by XOC_4190.

***Xoc* ΔXOC_{2335} , ΔXOC_{2393} and $\Delta XOC_{2335}/XOC_{2393}$ mutants, but not ΔXOC_{4190} , have elevated intracellular c-di-GMP levels.**

To determine if mutation of these GGDEF-EAL proteins affects the intracellular level of c-di-GMP, we quantified the c-di-GMP concentration in the wild type and multiple gene-deletion mutants using liquid chromatography-mass spectrometry. As shown in Fig. 7, $\Delta rpfG$ has the highest c-di-GMP concentration among the wild-type and tested mutant strains, consistent with previous findings that RpfG functions as a PDE and the $\Delta rpfG$ mutant showed more drastic changes phenotypically^{28,31}. Our results also showed an elevated c-di-GMP concentration in ΔXOC_{2335} , ΔXOC_{2393} and $\Delta XOC_{2335}/XOC_{2393}$ mutants compared with the wild-type strain. Meanwhile, the double mutant had a higher level of c-di-GMP than the single gene deletion mutants (Fig. 7). By contrast, no change in the c-di-GMP level was detected in the ΔXOC_{4190} mutant, consistent with the results from PDE and DGC activity assays. These results suggest that XOC_2335 and XOC_2393, but not XOC_4190, function to degrade c-di-GMP and are indeed PDEs.

Discussion

C-di-GMP is an important secondary messenger in phytopathogenic bacteria that has pleiotropic effects on virulence-associated cellular processes³. In the present study, we have addressed one facet of c-di-GMP regulation in *Xoc* by assessing the contribution of eleven tandem GGDEF-EAL proteins to bacterial virulence and virulence-associated traits. Three of these proteins (XOC_4190, XOC_2335 and XOC_2393) were implicated in the regulation of *Xoc* virulence and together with XOC_2102 were shown to control bacterial swimming and sliding motilities, but did not significantly affect other virulence-related functions such as biofilm formation,

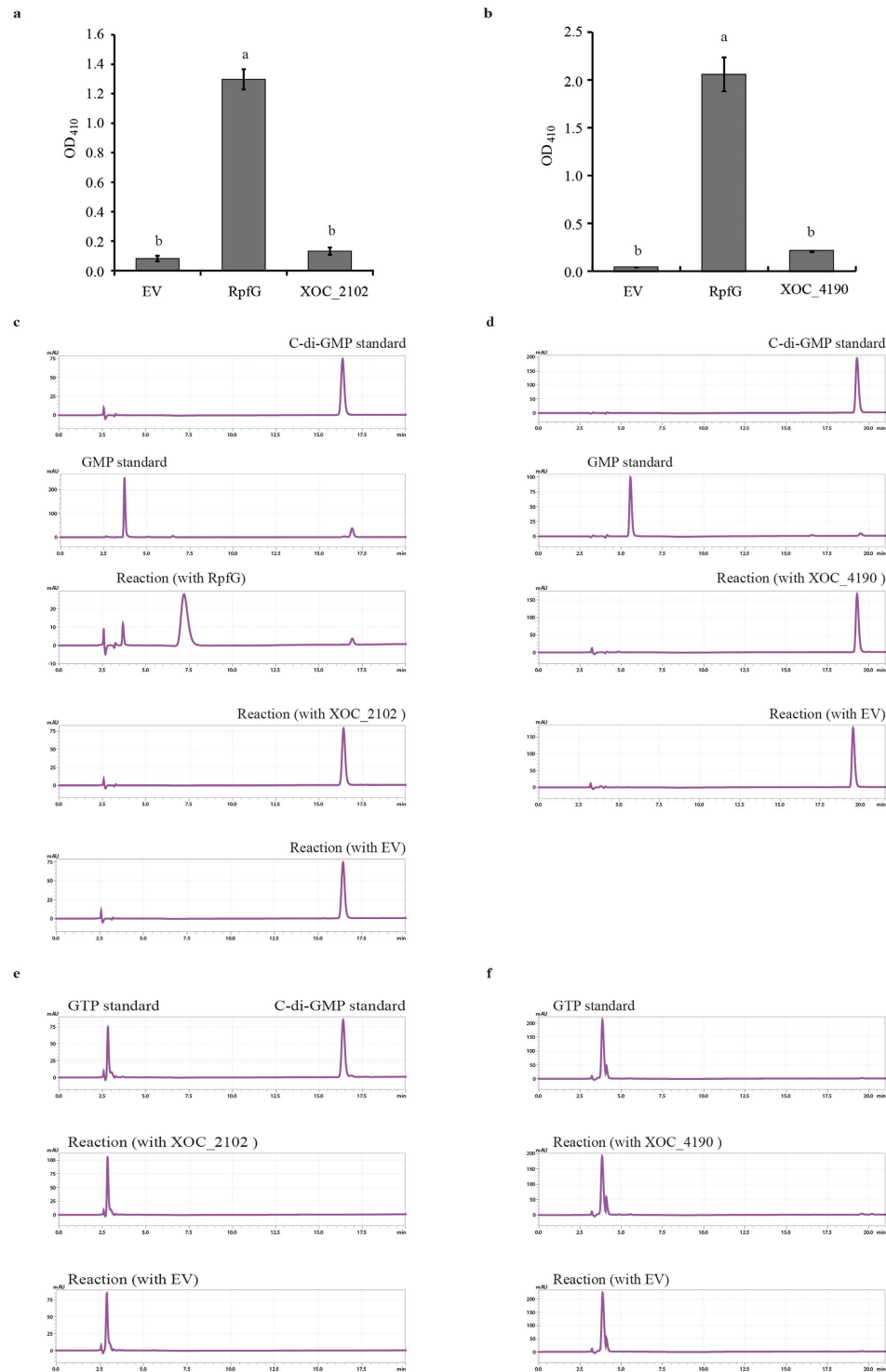


Figure 5. XOC_2102 and XOC_4190 are phosphodiesterase- and diguanylate cyclase-inactive. The PDE activity of the purified XOC_2102 (a) and XOC_4190 (b) was detected by colorimetric assays. No yellow degradation product *p*-nitrophenol was detected when the purified XOC_2102 (a) or XOC_4190 (b) was incubated with the colorless phosphodiesterase substrate bis(*p*-nitrophenyl) phosphate. As a positive control, the known PDE RpfG degraded the substrate into the yellow product that was detected spectrophotometrically at 410 nm. The PDE activity of the purified XOC_2102 (c) and XOC_4190 (d) was detected by HPLC assays. No degraded product was detected when XOC_2102 and XOC_4190 were incubated with *c*-di-GMP. In the same reaction buffer, two hydrolytic products *p*GpG and GMP were detected after RpfG was incubated with *c*-di-GMP for 6 h (c). The DGC activity of XOC_2102 (e) and XOC_4190 (f) was assayed by HPLC. No synthetic *c*-di-GMP was detected when the purified XOC_2102 (e) and XOC_4190 (f) were incubated with GTP in the assay buffer for 6 h. GTP and *c*-di-GMP were loaded and detected as standards. The eluant from empty vector (EV)-transformed *E. coli* cells through nickel column was used as a negative control.

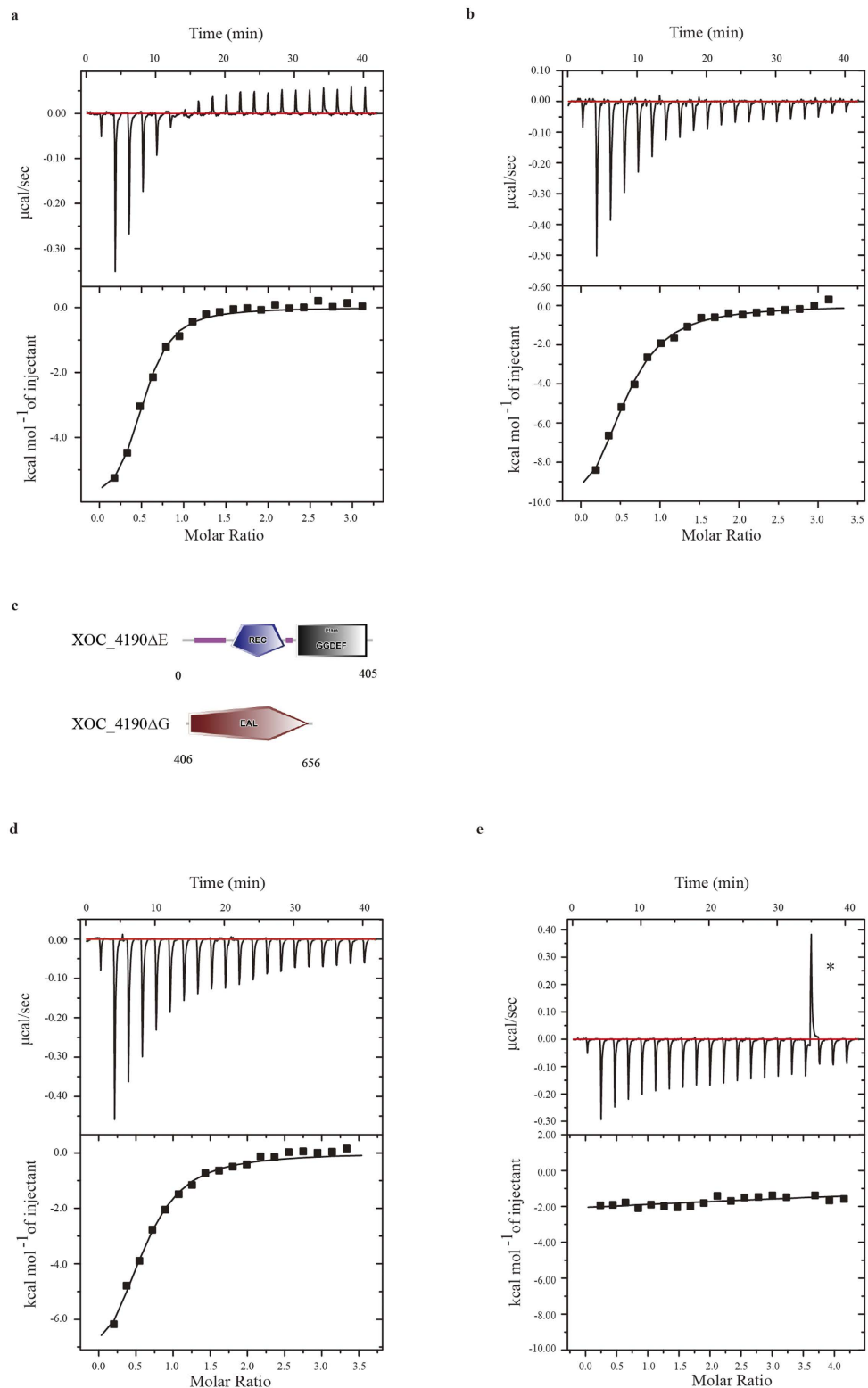


Figure 6. XOC_2102 and XOC_4190 bind to c-di-GMP *in vitro*. Isothermal titration calorimetry (ITC) measurement for the interaction of c-di-GMP and XOC_2102 (a) or XOC_4190 (b). The data indicate that the dissociation constants (K_d) are $2.90 \pm 0.13 \mu\text{M}$ or $4.59 \pm 0.36 \mu\text{M}$, respectively. (c) Schematic representation of the two truncated XOC_4190 proteins. XOC_4190ΔE, the truncated XOC_4190 without EAL domain; XOC_4190ΔG, the truncated XOC_4190 with the only EAL domain. ITC measurement for the interaction between c-di-GMP and XOC_4190ΔG (d) or XOC_4190ΔE (e). The data indicate that the K_d is $4.46 \pm 0.28 \mu\text{M}$ for interaction between c-di-GMP and XOC_4190ΔG. Top panels, the titration calorimetry of the proteins with c-di-GMP at room temperature; lower panels, normalized ITC data for titrations versus molar ratio of c-di-GMP and the proteins.

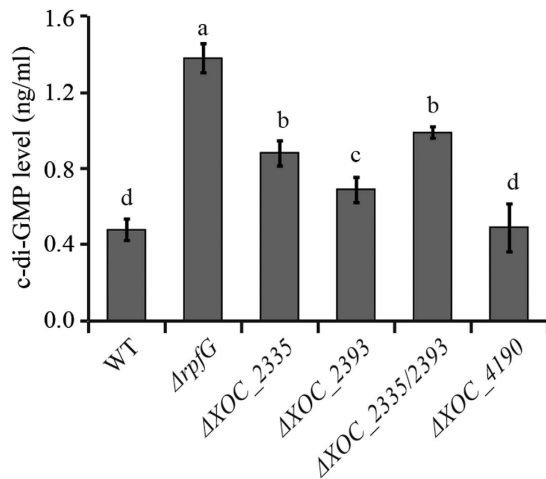


Figure 7. Measurement of intracellular c-di-GMP levels in wild-type or mutant *Xoc* strains. Assays were performed as described in the Methods. The c-di-GMP concentrations were quantified in the wild type (WT), $\Delta rpfG$, ΔXOC_{2335} , ΔXOC_{2393} , $\Delta XOC_{2335/2393}$ and ΔXOC_{4190} mutants. An increased c-di-GMP concentration was revealed in $\Delta rpfG$, $\Delta XOC_{2335/2393}$, ΔXOC_{2335} , and ΔXOC_{2393} in comparison with the wild-type strain. The c-di-GMP level in ΔXOC_{4190} was similar to that in the wild-type strain. Data are presented as means \pm SE. The letters (a–d) indicate significant difference ($P < 0.05$) by Duncan's multiple range test.

EPS production and protease secretion. The action of these four proteins in regulation appears to be different. XOC_2102 and XOC_4190 do not have detectable DGC or PDE activity but bind to cyclic di-GMP with high affinity, suggesting that they may act as effector proteins for the nucleotide. In contrast, XOC_2335 and XOC_2393 may be PDEs that can influence intracellular levels of c-di-GMP.

Virulence was assessed following direct inoculation of bacteria into rice leaves. This assay bypasses the earlier phases of the disease cycle where bacteria have an epiphytic lifestyle before entry into the host extracellular spaces through stomata and wounds. It may well be that other GGDEF-EAL domain proteins control factors that are important in this early phase of disease. In this context it should be noted that many GGDEF-EAL proteins carry other sensory and signal transduction domains and may regulate virulence-associated traits in response to environmental cues only found in naturally infected plants. The absence of an effect of mutation on known virulence factors when assayed *in vitro* may not reflect what occurs *in planta* during disease. For example, the PAS-GGDEF-EAL domain protein XC2324 of *X. campestris* pv. *campestris* may sense molecular oxygen through binding to the PAS domain, only causes a significant reduction in the synthesis of the virulence factors endoglucanase and endomannanase under low oxygen condition²⁷.

Quantification of the intracellular c-di-GMP concentration in ΔXOC_{2335} , ΔXOC_{2393} and $\Delta XOC_{2393/XOC_{2335}}$ mutants showed that these mutants all had higher c-di-GMP levels than the wild type (Fig. 7), indicating that XOC_2335 and XOC_2393 are indeed PDEs. Interestingly, the double $\Delta XOC_{2393/XOC_{2335}}$ mutant was attenuated in virulence to rice, although ΔXOC_{2393} and ΔXOC_{2335} exhibited no significant alteration in virulence. These results suggest that XOC_2335 and XOC_2393 might function redundantly or additively, consistent with the finding that the double mutant has a higher c-di-GMP level than the single gene mutants. In a previous study, we demonstrated that deletion of *rpfG* abolished *Xoc* virulence to rice and RpfG negatively regulated the expression of T3SS³¹. Consistently, *hrp* operon was shown to be significantly up-regulated in the $\Delta XOC_{2393/XOC_{2335}}$ mutant (Fig. 3c). Together with the finding that the c-di-GMP level is dramatically elevated in the $\Delta rpfG$ mutant, these results suggest that higher concentration of c-di-GMP is involved in positive regulation of T3SS expression in *Xoc*. In contrast, PdeR, a homolog of XOC_2393, with PDE activity, was required for the expression of the T3SS that is essential for bacterial virulence in *Xoo*¹⁹. It warrants to be further investigated why these PDEs might regulate T3SS expression in different ways in *Xoo* and *Xoc*.

The GGDEF-EAL domain proteins affecting virulence in *Xoc* have homologs in *Xoo*, but the effects of mutation of the encoding genes are different. As noted above, XOC_2393 is a homolog of PdeR in *Xoo* PXO99^A. The *pdeR* mutant is attenuated in virulence to rice and produces much less exopolysaccharide than the wild type¹⁹. By contrast, under our experimental conditions the ΔXOC_{2393} mutant exhibited no significant difference from the wild type in phenotypes other than motility. XOC_4190 and XOC_2102 are homologous to PXO_02944 and Filp of *Xoo*, respectively. In contrast to ΔXOC_{4190} that has attenuated virulence to rice, ΔPXO_{02944} exhibits increased EPS production, biofilm formation and also elevated virulence to rice⁴³. ΔXOC_{2102} and $\Delta filp$ strains showed similar phenotypes, with altered motility, but no effects on EPS production or biofilm formation. However, the *filp* mutant is attenuated in virulence to rice unlike the ΔXOC_{2102} strain. Different phenotypes caused by mutation of homologous genes in xanthomonads have been reported previously^{27,44}. Several reports suggest that DSF signaling regulates virulence-associated traits in a completely different pattern in *Xoo* and *Xcc*^{45–47}. The difference might be due to genetic divergence and different infection styles among the *Xanthomonas* species.

Bacteria exhibit several types of motilities, such as swimming, twitching and sliding motilities under various conditions¹². A body of work has implicated GGDEF-EAL domain proteins in the regulation of these different modes of motility. For example, mutation of XC2161 in *X. campestris* pv. *campestris* reduces pilus-dependent motility, while loss of another GGDEF-EAL protein XC2226 causes an opposite phenotype²⁷. FimX of *P. aeruginosa* is reported to be involved in type IV pilus-based motility¹². In general, higher levels of c-di-GMP suppresses swimming motility¹². Our finding that deletion of the genes encoding the putative PDEs XOC_2335 and XOC_2393 caused the elevated intracellular c-di-GMP level and reduced swimming motility is consistent with this contention. Bioinformatic analysis of XOC_2393 indicates that it has a degenerate GGDEF domain, with a GSDEM motif, but that key residues in the EAL domain required for active PDEs are all conserved. XOC_2393 shares 95.2% amino acid sequence similarity to PdeR in *X. oryzae* pv. *oryzae* PXO99^A and the EAL domains of the two proteins are identical. Intriguingly, PdeR has been shown to have PDE activity *in vitro*⁴⁴. Complementation experiments with point mutations in GGDEF or EAL motifs demonstrated that both motifs were required for XOC_2335 function in regulating swimming motility. In *C. crescentus*, the GGDEF-EAL protein CC3396 is able to bind GTP through degenerate GGDEF domain and then activates the PDE activity in the neighboring EAL domain¹⁸. Therefore, it is interesting to further investigate whether XOC_2335 and XOC_2393 function in swimming motility with a similar mechanism to CC3396. Unfortunately, multiple attempts to express and purify XOC_2335 and XOC_2393 in *E. coli* failed because the proteins were insoluble.

Interestingly, we demonstrated that XOC_2335 positively controlled swimming ability, but did not affect sliding motility. By contrast, XOC_2393 regulated both swimming and sliding motilities in the opposite way. Therefore, the effect of XOC_2335 and XOC_2393 on phenotypes was not completely redundant. Swimming motility is mediated by flagella, while sliding motility is mediated by the type IV pili. Speculatively, XOC_2393 might regulate the pili-mediated sliding motility in a c-di-GMP-independent manner. These findings indicate a complexity in regulation that might reflect an emerging concept of the multi-functionality of c-di-GMP signaling proteins, which can have a regulatory action exerted through protein-protein interactions that is independent of their enzymatic activity in cyclic di-GMP turnover.

Bioinformatic analysis indicates that XOC_2102 and XOC_4190 with degenerate GGDEF and EAL domains might not function as a DGC or PDE, which is consistent with the DGC and PDE enzymatic assays (Fig. 5). The hypothesis is also supported by the fact that the c-di-GMP level is not altered in Δ XOC_4190 mutant (Fig. 7). Previous studies showed that some enzymatically inactive GGDEF-EAL domain proteins, such as FimX from *P. aeruginosa*, LapD from *P. fluorescens*, and Filp from *X. oryzae* pv. *oryzae* PXO99^A can act as a major class of c-di-GMP receptors in different bacteria. These proteins bind to c-di-GMP with high-affinity through the degenerate and enzymatically inactive C-terminal EAL domains and serve as the receptors of this signal molecule^{19,21,37}. In this study, ITC assays clearly showed that XOC_4190 and XOC_2102 bound to c-di-GMP. Furthermore, we further revealed that the only EAL domain of XOC_4190 can bind to c-di-GMP, while the GGDEF domain cannot. Therefore, several of these *Xoc* proteins with degenerate GGDEF-EAL domains might function in c-di-GMP signaling through serving as c-di-GMP effectors.

In this study, we systemically analyzed the functions of GGDEF-EAL proteins in *Xoc*. XOC_4190 was shown to be an essential regulator of bacterial virulence likely through functioning as a c-di-GMP receptor. Both XOC_2335 and XOC_2393 individually regulate bacterial motility and together control *Xoc* virulence. These novel findings suggest new questions for further research. How do c-di-GMP signaling proteins regulate various types of bacterial motility in opposite ways? How is c-di-GMP signaling involved in virulence regulation? Identification of protein-protein interactions involved in signaling and determination of the crystal structure of the putative effectors in complex with c-di-GMP will help to elucidate the molecular mechanisms underlying the diverse regulatory functions of GGDEF-EAL proteins.

Methods

Bacterial strains and culture conditions. The *X. oryzae* pv. *oryzicola* strain RS105 and its mutants were cultured in nutrient broth (NB) medium (3 g/L beef extract, 1 g/L yeast extract, 5 g/L tryptone, 10 g/L sucrose) at 28 °C. Yeast cultures were grown in YPDA medium (20 g/L Bacto™ Peptone, 10 g/L yeast extract, 20 g/L glucose, 30 mg/L adenine) at 28 °C. Antibiotics were used at the following concentrations: ampicillin, 100 µg/ml; kanamycin, 50 µg/ml; rifampin, 25 µg/ml. All gene constructs were confirmed by sequencing.

Mutant construction and complementation of *Xoc* mutant strains. Non-marker homologous recombination was used to construct gene-deletion mutants of *Xoc* as described previously³¹. Briefly, ~1 kb long flanking regions upstream and downstream of open reading frames (ORFs) of the target genes were amplified by PCR with specifically designed primers (see Supplementary Table S2). PCR products were gel purified and added together into a fusion PCR. The resultant PCR fragments were cloned into pUFR80, which carries the *sacB* suicide gene⁴⁸. The constructed plasmids were then conjugated into *Xoc* RS105 through triparental mating. The recombinant conjugants resulted from double cross-over events were screened on nutrient agar (NB medium with 1.5% agar) plates with 5% sucrose. The gene-deletion genotypes of sucrose-insensitive *Xoc* colonies were identified through colony PCR and were then subjected to confirmation via Southern blot analyses.

To construct complementation strains of *Xoc* mutants, full-length genes including native promoters were amplified by PCR using designed primers (see Supplementary Table S2). The amplified products were cloned into the wide host-range vector pVSP61⁴⁹. After being confirmed by sequencing, the constructs were individually conjugated into the corresponding mutants and successful conjugants were then selected on kanamycin-containing NA plates.

Southern blot analysis. Southern blot analysis was performed according to standard protocols in molecular biology⁵⁰. Briefly, genomic DNA was isolated from the wild-type and mutant strains of *Xoc* using a genomic

DNA isolation kit (New Industry Company, Beijing, China) and was then digested with appropriate restriction enzymes overnight. After separated by agarose gel, digested genomic DNA was transferred onto Hybond-N nylon membrane (GE Healthcare) and was then hybridized with the ³²P-labeled gene fragments that were amplified by PCR using the primers listed in the Supplementary Table S2.

Biofilm quantification. Biofilm masses of *Xoc* cultures were quantified as described previously³¹. Briefly, bacterial strains were cultured in 5 ml L medium (10 g/L tryptone, 5 g/L yeast extract, 5 g/L NaCl and 1 g/L glucose) in the borosilicate glass tubes. After 7 d of incubation at quiescent state at 28 °C, cultured cells were stained with 10% crystal violet (CV) for 15 min. The tubes were rinsed with H₂O carefully to remove the surplus dye. The CV-stained biofilm attached to the tubes was solubilized in 90% ethanol and quantified by spectrophotometry at 590 nm.

Exopolysaccharide production. Exopolysaccharide (EPS) production in *Xoc* cultures was determined as described previously^{31,51}. Overnight cultures of *Xoc* were collected and re-suspended in sterile water to an OD₆₀₀ of ~1.0. The cells were diluted at 1:1,000 with M210 medium (8 g/L casein enzymatic hydrolysates, 4 g/L yeast extract, 5 g/L sucrose, 3 g/L KH₂PO₄, 0.3 g/L MgSO₄·7H₂O) and cultured further for 30 h. The supernatants (10 ml) were collected after centrifugation at 12,000 rpm for 5 min. EPS was precipitated by mixing the supernatant with two volumes of absolute ethanol and incubating at –20 °C overnight. The precipitate was collected by centrifugation at 10,000 rpm for 5 min and fully dried at 55 °C before weighing.

Protease secretion assay. The secretion of extracellular proteases of *Xoc* strains was assayed as described elsewhere⁵². Briefly, bacteria were cultured on the water agar plates containing 1% (w/v) skimmed milk at 28 °C for 4 d. The diameter of clearing zones around the colonies formed by the proteolytic degradation of skimmed milk was measured to assess the activity of secreted proteases.

Bacterial motility assays. The swimming motility of *Xoc* strains was determined on semisolid medium plates containing 0.2% noble agar, 0.03% yeast extract and 0.03% bacto peptone⁵³. *Xoc* strains were inoculated into the center of the plates by pipetting. After culturing at 28 °C for 4 d, the diameter of bacterial colonies was measured. The sliding motility of *Xoc* was evaluated by the diameter of bacterial colonies after *Xoc* strains were incubated on SB medium plates (5 g/L bacto peptone, 5 g/L yeast extract, 1 g/L L-glutamic acid, and 0.6% noble agar) for 4 d at 28 °C³⁸.

Virulence assay of *Xoc* to rice. Virulence assays were performed as described previously²⁵. Briefly, overnight grown cells were collected and re-suspended in sterile distilled water to cell density of OD₆₀₀ = 0.3. Bacterial suspensions were pressure-infiltrated into the leaves of 6-week-old rice plants using needleless syringes. The length of disease lesions was measured at 14 d after inoculation. At least 10 inoculated leaves were measured for each of the tested *Xoc* strains.

RNA isolation and quantitative real-time RT-PCR. Overnight *Xoc* cultures were diluted in the *hrp*-inducing XOM3 medium⁵⁴ to an OD₆₀₀ of 0.08 and grew further till OD₆₀₀ = 0.6. The cells were then harvested to isolate RNA using TransZol Up Plus RNA Kit (Transgen, Beijing, China) following the manufacturer's instructions. Quantitative real-time RT-PCR (qRT-PCR) was performed as described previously with minor modifications³¹. Bestar[®] SYBRGreen qPCR Mastermix (DBI[®] Bioscience, Shanghai, China) was used here in qRT-PCR reactions to quantify the transcript levels. Expression of 16S rRNA was used as the internal reference for data analysis.

Site-directed mutagenesis and gene constructs encoding truncated proteins. Site-directed mutagenesis was performed through circular PCR following the manufacturer's instructions (Stratagene). Briefly, PCR was performed with *Pfu* Ultra DNA polymerase using the pUC19-*XOC*_2335 plasmid DNA as template. After the methylated template DNA was digested with *Dpn* I for 3 h at 37 °C, PCR products were transformed into *E. coli* DH5α cells. The plasmid DNA with point mutations were isolated and subject to confirmation by sequencing. The mutated gene fragments were released from the pUC19 constructs with *Bam*H I and *Sac* I and were then re-ligated into pVSP61. The native promoter and coding sequences for GGDEF domain of *XOC*_2335 were amplified with the primer set 2335-*Sac* I-HA-F/2335-ΔE-*Hind* III-HA-R (see Supplementary Table S2). The promoter and coding sequences for EAL domain of *XOC*_2335 were amplified with the primer sets 2335-*Sac* I-HA-F/2335-ΔG-R and 2335-ΔG-F/2335-*Hind* III-HA-R, respectively (see Supplementary Table S2). Two fragments were fused by overlap extension PCR and the resultant PCR products were cloned into pVSP61⁴⁹.

Protein expression and purification. The ORFs of *XOC*_4190 and *XOC*_2102 were amplified from *Xoc* RS105 genome by PCR using primer sets listed in the Supplementary Table S2. The amplified fragments were inserted into pQE30 (Qiagen) after the digestion with *Bam*H I and *Hind* III. The truncated coding sequences for GGDEF and EAL domains of *XOC*_4190 (1–405 and 406–656 amino acid residues, respectively) were amplified with the primer sets *XOC*_4190ΔE-F/*XOC*_4190ΔE-R and *XOC*_4190ΔG-F/*XOC*_4190ΔG-R, respectively (see Supplementary Table S2). The PCR fragments were sub-cloned into the expression vector pET28a (Novagen, Madison, WI) after gel purification and digestion. The pQE30 and pET28a constructs were transformed into the *E. coli* strains XL1-blue and BL21(DE3), respectively. To induce expression of the target proteins, isopropyl β-D-thiogalactopyranoside (IPTG, 0.1 mM) was added into cell cultures when OD₆₀₀ reached 0.5–0.7. After 4–5 h of induction at room temperature, cultured cells were collected by centrifugation. For protein purification, cell pellets were re-suspended in lysis buffer (20 mM Tris-Cl, 50 mM NaCl, and 10 mM imidazole, pH 8.0) and then subject to sonication. The supernatant was prepared by centrifugation at 10,000 g for 20 min and loaded onto

nickel-nitrilotriacetic acid agarose superflow columns (Qiagen), which were thoroughly rinsed with washing buffer (20 mM Tris-Cl, 50 mM NaCl, and 20 mM imidazole, pH 8.0). The bound His6-tagged protein was eluted with elution buffer (20 mM Tris-Cl, 50 mM NaCl, and 250 mM imidazole, pH 8.0) and dialyzed extensively in 10 mM Tris-Cl (pH 8.0). The concentration of purified proteins was determined using Pierce™ BCA protein assay kit (Thermo Scientific, IL, USA).

Immunoblotting. Total protein extracts were separated by a 12% polyacrylamide gel after boiling for 10 min. The proteins were electrophoretically transferred onto Immobilon-P membrane (Millipore) for immunoblotting with a horseradish peroxidase-conjugated anti-HA antibody (Roche). The membranes were then incubated with the eECL Western Blot chemiluminescent substrate (CWBio, China) for 5 min, and then exposed to X-ray films.

Phosphodiesterase colorimetric assay. *In vitro* purified proteins were assayed for the PDE activity using colorimetric assays⁵⁵. Briefly, purified proteins (20 µg) were incubated with the PDE substrate, 5 mM bis(*p*-nitrophenyl) phosphate, at 37 °C for 1.5 h in assay buffer (50 mM Tris-Cl, 1 mM MnCl₂, pH 8.5). The yellow product was quantified using spectrophotometer at OD₄₁₀.

Enzymatic assays by high-performance liquid chromatography. The DGC and PDE activities were also assayed using high-performance liquid chromatography (HPLC) as described^{31,55}. The enzyme activities were investigated using 20 µg of purified proteins in a buffer containing 25 mM Tris-Cl, pH 7.9, 250 mM NaCl, and 10 mM MgCl₂. The PDE activity was tested using 100 µM of *c*-di-GMP as substrates, while the DGC activity was determined by replacing *c*-di-GMP with GTP (100 µM). The reaction mixture was incubated at 37 °C for 6 h and then stopped by boiling for 3 min. After centrifugation at 15,000 g for 2 min, the supernatant was filtered through a 0.22 µm membrane. Each sample (20 µl) was injected into a reverse phase C18 column (250 × 4.60 mm, 5 µm; Phenomenex, USA) with a Shimadzu 10AT system (Shimadzu Co., Ltd, Japan). The material was eluted at a flow rate of 1 ml/min with a 1%/min linear gradient of 0 ~ 20% methanol in 20 mM potassium phosphate buffer (pH 5.8). The products were visualized under 254-nm UV light.

Isothermal titration calorimetry assay. Isothermal titration calorimetry (ITC) assays were performed on a MicroCal iTC200 calorimeter (MicroCal, Northampton, MA) to investigate the binding of *c*-di-GMP to *in vitro* purified proteins⁴². Titration calorimetry was performed at 25 °C in the assay buffer containing 20 mM Tris-Cl (pH 8.0), 500 mM NaCl and 250 mM imidazole. In brief, *c*-di-GMP solution (100 ~ 500 µM, 2 µl aliquots) was injected at 2 min intervals via a 40 µl syringe into the sample cell containing the purified proteins (10 ~ 50 µM). ITC data were analyzed by integrating heat effects after being normalized to the amount of injected *c*-di-GMP. Curve fitting was performed based on a single-site binding model to determine the dissociation constants (K_d) using the MicroCal ORIGIN version 7.0 software.

Determination of intracellular *c*-di-GMP concentration. Intracellular *c*-di-GMP levels in the wild-type and mutant strains were determined by liquid chromatography tandem mass spectrometry (LC-MS/MS) as described previously⁵⁶. Briefly, overnight bacterial cultures were diluted to 1:100 into 90 ml LB media in a flask and grew further till OD₆₀₀ ~ 0.8. The cultures were collected by centrifugation and were then re-suspended with 100 µl of extraction buffer (40% methanol and 40% acetonitrile in 0.1 N formic acid) per 48 mg of wet cell weight. The slurries were incubated 30 min at -20 °C and insoluble material was removed by centrifugation at 4 °C. The supernatants were neutralized by the addition of 4 µl of 15% NH₄ HCO₃ per 100 µl of sample. Each sample (100 µl) was analyzed using LC-MS/MS.

Statistical Analysis. Significant differences in various phenotypes among different strains ($P < 0.05$) were determined by Duncan's multiple range test using SAS program.

References

- Ross, P. *et al.* Regulation of cellulose synthesis in *Acetobacter xylinum* by cyclic diguanylic acid. *Nature* **325**, 279–281 (1987).
- Ross, P., Mayer, R. & Benziman, M. Cellulose biosynthesis and function in bacteria. *Microbiol. Rev.* **55**, 35–58 (1991).
- Mills, E., Pultz, I. S., Kulasekara, H. D. & Miller, S. I. The bacterial second messenger *c*-di-GMP: mechanisms of signalling. *Cell. Microbiol.* **13**, 1122–1129 (2011).
- Sondermann, H., Shikuma, N. J. & Yildiz, F. H. You've come a long way: *c*-di-GMP signaling. *Curr. Opin. Microbiol.* **15**, 140–146 (2012).
- Baraquet, C. & Harwood, C. S. Cyclic diguanosine monophosphate represses bacterial flagella synthesis by interacting with the Walker a motif of the enhancer-binding protein FleQ. *Proc. Natl. Acad. Sci. USA* **110**, 18478–18483 (2013).
- Sudarsan, N. *et al.* Riboswitches in eubacteria sense the second messenger cyclic di-GMP. *Science* **321**, 411–413 (2008).
- Lee, V. T. *et al.* A cyclic-di-GMP receptor required for bacterial exopolysaccharide production. *Mol. Microbiol.* **65**, 1474–1484 (2007).
- Whitney, J. C. *et al.* Structure of the cytoplasmic region of PelD, a degenerate diguanylate cyclase receptor that regulates exopolysaccharide production in *Pseudomonas aeruginosa*. *J. Biol. Chem.* **287**, 23582–23593 (2012).
- Povolotsky, T. L. & Hengge, R. 'Life-style' control networks in *Escherichia coli*: Signaling by the second messenger *c*-di-GMP. *J. Biotechnol.* **160**, 10–16 (2012).
- Waters, C. M., Lu, W., Rabinowitz, J. D. & Bassler, B. L. Quorum sensing controls biofilm formation in *Vibrio cholerae* through modulation of cyclic di-GMP levels and repression of vpsT. *J. Bacteriol.* **190**, 2527–2536 (2008).
- Hengge, R. Principles of *c*-di-GMP signalling in bacteria. *Nat. Rev. Microbiol.* **7**, 263–273 (2009).
- Romling, U., Galperin, M. Y. & Gomelsky, M. Cyclic di-GMP: the first 25 years of a universal bacterial second messenger. *Microbiol. Mol. Biol. Rev.* **77**, 51–52 (2013).
- Seshasayee, A. S., Fraser, G. M. & Luscombe, N. M. Comparative genomics of cyclic-di-GMP signalling in bacteria: post-translational regulation and catalytic activity. *Nucleic Acids Res.* **38**, 5970–5981 (2010).
- Bharati, B. K. *et al.* A full-length bifunctional protein involved in *c*-di-GMP turnover is required for long-term survival under nutrient starvation in *Mycobacterium smegmatis*. *Microbiology* **158**, 1415–1427 (2012).

15. Levet-Paulo, M. *et al.* The atypical two-component sensor kinase Lpl0330 from *Legionella pneumophila* controls the bifunctional diguanylate cyclase-phosphodiesterase Lpl0329 to modulate bis-(3'-5')-cyclic dimeric GMP synthesis. *J. Biol. Chem.* **286**, 31136–31144 (2011).
16. Ferreira, R. B., Antunes, L. C., Greenberg, E. P. & McCarter, L. L. *Vibrio parahaemolyticus* ScrC modulates cyclic dimeric GMP regulation of gene expression relevant to growth on surfaces. *J. Bacteriol.* **190**, 851–860 (2008).
17. Qi, Y., Rao, F., Luo, Z. & Liang, Z. X. A flavin cofactor-binding PAS domain regulates c-di-GMP synthesis in AxDGC2 from *Acetobacter xylinum*. *Biochemistry* **48**, 10275–10285 (2009).
18. Christen, M., Christen, B., Folcher, M., Schauerte, A. & Jenal, U. Identification and characterization of a cyclic di-GMP-specific phosphodiesterase and its allosteric control by GTP. *J. Biol. Chem.* **280**, 30829–30837 (2005).
19. Newell, P. D., Monds, R. D. & O'Toole, G. A. LapD is a bis-(3',5')-cyclic dimeric GMP-binding protein that regulates surface attachment by *Pseudomonas fluorescens* Pf0-1. *Proc. Natl. Acad. Sci. USA* **106**, 3461–3466 (2009).
20. Newell, P. D., Yoshioka, S., Hvorecny, K. L., Monds, R. D. & O'Toole, G. A. Systematic analysis of diguanylate cyclases that promote biofilm formation by *Pseudomonas fluorescens* Pf0-1. *J. Bacteriol.* **193**, 4685–4698 (2011).
21. Yang, F. *et al.* The degenerate EAL-GGDEF domain protein Pilp functions as a cyclic di-GMP receptor and specifically interacts with the PilZ-domain protein PXO_02715 to regulate virulence in *Xanthomonas oryzae* pv. *oryzae*. *Mol. Plant Microbe Interact.* **27**, 578–589 (2014).
22. Cursino, L. *et al.* Characterization of the *Xylella fastidiosa* PD1671 gene encoding degenerate c-di-GMP GGDEF/EAL domains, and its role in the development of Pierce's disease. *PLoS One* **10**, e0121851 (2015).
23. NIÑO-LIU, D. O., Ronald, P. C. & Bogdanove, A. J. *Xanthomonas oryzae* pathovars: model pathogens of a model crop. *Mol. Plant Pathol.* **7**, 303–324 (2006).
24. Mew, T. W., Alvarez, A. M., Leach, J. E. & Swings, J. Focus on bacterial-blight of rice. *Plant Dis.* **77**, 5–12 (1993).
25. Wang, L., Makino, S., Subedee, A. & Bogdanove, A. J. Novel candidate virulence factors in rice pathogen *Xanthomonas oryzae* pv. *oryzicola* as revealed by mutational analysis. *Appl. Environ. Microbiol.* **73**, 8023–8027 (2007).
26. Zou, H. *et al.* Construction of a Tn5-tagged mutant library of *Xanthomonas oryzae* pv. *oryzicola* as an invaluable resource for functional genomics. *Curr. Microbiol.* **62**, 908–916 (2011).
27. Ryan, R. P. *et al.* Cyclic di-GMP signalling in the virulence and environmental adaptation of *Xanthomonas campestris*. *Mol. Microbiol.* **63**, 429–442 (2007).
28. Ryan, R. P. *et al.* Cell-cell signaling in *Xanthomonas campestris* involves an HD-GYP domain protein that functions in cyclic di-GMP turnover. *Proc. Natl. Acad. Sci. USA* **103**, 6712–6717 (2006).
29. Poplawsky, A. R., Walters, D. M., Rouviere, P. E. & Chun, W. A gene for a dioxygenase-like protein determines the production of the DF signal in *Xanthomonas campestris* pv. *campestris*. *Mol. Plant Pathol.* **6**, 653–657 (2005).
30. Slater, H., Alvarez-Morales, A., Barber, C., Daniels, M. & Dow, J. A two-component system involving an HD-GYP domain protein links cell-cell signalling to pathogenicity gene expression in *Xanthomonas campestris*. *Mol. Microbiol.* **38**, 986–1003 (2000).
31. Zhang, Y. *et al.* The HD-GYP domain protein RpfG of *Xanthomonas oryzae* pv. *oryzicola* regulates synthesis of extracellular polysaccharides that contribute to biofilm formation and virulence on rice. *PLoS One* **8**, e59428 (2013).
32. Bogdanove, A. J. *et al.* Two new complete genome sequences offer insight into host and tissue specificity of plant pathogenic *Xanthomonas* spp. *J. Bacteriol.* **193**, 5450–5464 (2011).
33. Chang, A. L. *et al.* Phosphodiesterase A1, a regulator of cellulose synthesis in *Acetobacter xylinum*, is a heme-based sensor. *Biochemistry* **40**, 3420–3426 (2001).
34. Hurley, J. H. GAF domains: Cyclic nucleotides come full circle. *Sci. STKE*. **164**, pe1 (2003).
35. Galperin, M. Y., Gaidenko, T. A., Mulikidjanian, A. Y., Nakano, M. & Price, C. W. MHYT, a new integral membrane sensor domain. *FEMS Microbiol. Lett.* **205**, 17–23 (2001).
36. Gao, R. & Stock, A. M. Biological insights from structures of two-component proteins. *Annu. Rev. Microbiol.* **63**, 133 (2009).
37. Qi, Y. *et al.* Binding of cyclic diguanylate in the non-catalytic EAL domain of FimX induces a long-range conformational change. *J. Biol. Chem.* **286**, 2910–2917 (2011).
38. Guzzo, C. R., Salinas, R. K., Andrade, M. O. & Farah, C. S. PILZ protein structure and interactions with PILB and the FIMX EAL domain: Implications for control of type IV pilus biogenesis. *J. Mol. Biol.* **393**, 848–866 (2009).
39. Stoodley, P., Sauer, K., Davies, D. G. & Costerton, J. W. Biofilms as complex differentiated communities. *Annu. Rev. Microbiol.* **56**, 187–209 (2002).
40. Buttner, D. & Bonas, U. Regulation and secretion of *Xanthomonas* virulence factors. *FEMS Microbiol. Rev.* **34**, 107–133 (2010).
41. Navarro, M. V. *et al.* Structural basis for c-di-GMP-mediated inside-out signaling controlling periplasmic proteolysis. *PLoS Biol.* **9**, e1000588 (2011).
42. Qi, Y. *et al.* Functional divergence of FimX in PilZ binding and type IV pilus regulation. *J. Bacteriol.* **194**, 5922–5931 (2012).
43. Li, X. T. *et al.* Molecular characterization of the negative regulator PXO_02944 in virulence, extracellular polysaccharide production and biofilm formation in *Xanthomonas oryzae* pv. *oryzae*. *Sci. Agric. Sin.* **47**, 2563–2570 (2014).
44. Yang, F. H. *et al.* A novel two-component system PdeK/PdeR regulates c-di-GMP turnover and virulence of *Xanthomonas oryzae* pv. *oryzae*. *Mol. Plant Microbe Interact.* **25**, 1361–1369 (2012).
45. Ryan, R. P. Cyclic di-GMP signalling and the regulation of bacterial virulence. *Microbiology* **159**, 1286–1297 (2013).
46. Ryan, R. P., An, S. Q., Allan, J. H., McCarthy, Y. & Dow, J. M. The DSF family of cell-cell signals: An expanding class of bacterial virulence regulators. *PLoS Pathog.* **11**, e1004986 (2015).
47. He, Y. W., Wu, J., Cha, J. S. & Zhang, L. H. Rice bacterial blight pathogen *Xanthomonas oryzae* pv. *oryzae* produces multiple DSF-family signals in regulation of virulence factor production. *BMC Microbiol.* **10**, 187 (2010).
48. Ried, J. L. & Collmer, A. An nptI-sacB-sacR cartridge for constructing directed, unmarked mutations in gram-negative bacteria by marker exchange- eviction mutagenesis. *Gene* **57**, 239–246 (1987).
49. Loper, J. E. & Lindow, S. E. Lack of evidence for the *in situ* fluorescent pigment production by *Pseudomonas syringae* pv. *syringae* on bean leaf surfaces. *Phytopathology* **77**, 1449–1454 (1987).
50. Cannon, F. C., Riedel, G. E. & Ausubel, F. M. Overlapping sequences of *Klebsiella pneumoniae* nif DNA cloned and characterized. *Mol. Gen. Genet.* **174**, 59–66 (1979).
51. O'Toole, G. A. & Kolter, R. Flagellar and twitching motility are necessary for *Pseudomonas aeruginosa* biofilm development. *Mol. Microbiol.* **30**, 295–304 (1998).
52. Tang, J. L. *et al.* Genetic and molecular analysis of a cluster of *rpf* genes involved in positive regulation of synthesis of extracellular enzymes and polysaccharide in *Xanthomonas campestris* pathovar *campestris*. *Mol. Gen. Genet.* **226**, 409–417 (1991).
53. DiLuzio, W. R. *et al.* *Escherichia coli* swim on the right-hand side. *Nature* **435**, 1271–1274 (2005).
54. Jia, J. *et al.* Expression of the *hrcC*, *hrpE* and *hpa3* genes is not regulated by the *hrpG* and *hrpX* genes in a rice pathogen *Xanthomonas oryzae* pv. *oryzicola*. *Acta Microbiol. Sin.* **49**, 1018–1025 (2009).
55. Yi, X., Yamazaki, A., Biddle, E., Zeng, Q. & Yang, C. H. Genetic analysis of two phosphodiesterases reveals cyclic diguanylate regulation of virulence factors in *Dickeya dadantii*. *Mol. Microbiol.* **77**, 787–800 (2010).
56. Bobrov, A. G. *et al.* Systematic analysis of cyclic di-GMP signalling enzymes and their role in biofilm formation and virulence in *Yersinia pestis*. *Mol. Microbiol.* **79**, 533–551 (2011).

Acknowledgements

We thank Fengquan Liu and Guoliang Qian at Nanjing Agricultural University for providing materials. We also thank Yu Tian and Weihua Wang at Drug Discovery Facility, Center of Biomedical Analysis, Tsinghua University for help in LC-MS/MS analysis. The work is supported by the Special Fund for Agro-Scientific Research in the Public Interest of China (201303015), National Natural Science Foundation of China grant 31272007, the National High Technology Research and Development program of China 2012AA100703, and the 111 project B13006 to W.S.

Author Contributions

W.J., C.W., M.Z., J.L., X.Z., J.D. and D.J. conducted experiments. W.J., C.W., J.M.D. and W.S. designed experiments and analyzed data. W.J., C.W., J.M.D. and W.S. wrote the manuscript.

Additional Information

Supplementary information accompanies this paper at <http://www.nature.com/srep>

Competing financial interests: The authors declare no competing financial interests.

How to cite this article: Wei, C. *et al.* A systematic analysis of the role of GGDEF-EAL domain proteins in virulence and motility in *Xanthomonas oryzae* pv. *oryzicola*. *Sci. Rep.* **6**, 23769; doi: 10.1038/srep23769 (2016).



This work is licensed under a Creative Commons Attribution 4.0 International License. The images or other third party material in this article are included in the article's Creative Commons license, unless indicated otherwise in the credit line; if the material is not included under the Creative Commons license, users will need to obtain permission from the license holder to reproduce the material. To view a copy of this license, visit <http://creativecommons.org/licenses/by/4.0/>