



OPEN ACCESS

ORIGINAL ARTICLE

Alcohol inhibits T-cell glucose metabolism and hepatitis in ALDH2-deficient mice and humans: roles of acetaldehyde and glucocorticoids

Yanhang Gao,^{1,2} Zhou Zhou,¹ Tianyi Ren,^{1,2} Seung-Jin Kim,¹ Yong He,¹ Wonhyo Seo,¹ Adrien Guillot,¹ Yanhua Ding,² Ruihong Wu,² Shuang Shao,² Xiaomei Wang,² Hong Zhang,² Wei Wang,¹ Dechun Feng,¹ Mingjiang Xu,¹ Elaine Han,¹ Wei Zhong,³ Zhanxiang Zhou,³ Pal Pacher,⁴ Junqi Niu,² Bin Gao¹

► Additional material is published online only. To view please visit the journal online (<http://dx.doi.org/10.1136/gutjnl-2018-316221>).

For numbered affiliations see end of article.

Correspondence to

Prof Junqi Niu, Department of Hepatology, First Affiliated Hospital, Jilin University, Changchun, China; junqiniu@aliyun.com and Dr Bin Gao, Laboratory of Liver Diseases, National Institute on Alcohol Abuse and Alcoholism, National Institutes of Health, Bethesda, MD 20892, USA; bgao@mail.nih.gov

YG, ZZ and TR contributed equally.

Received 7 February 2018

Revised 16 July 2018

Accepted 20 July 2018

Published Online First

18 August 2018



© Author(s) (or their employer(s)) 2019. Re-use permitted under CC BY-NC. No commercial re-use. See rights and permissions. Published by BMJ.

To cite: Gao Y, Zhou Z, Ren T, et al. *Gut* 2019;**68**:1311–1322.

ABSTRACT

Objective Aldehyde dehydrogenase 2 (ALDH2), a key enzyme to detoxify acetaldehyde in the liver, exists in both active and inactive forms in humans. Individuals with inactive ALDH2 accumulate acetaldehyde after alcohol consumption. However, how acetaldehyde affects T-cell hepatitis remains unknown.

Design Wild-type (WT) and *Aldh2* knockout (*Aldh2*^{-/-}) mice were subjected to chronic ethanol feeding and concanavalin A (ConA)-induced T-cell hepatitis. Effects of acetaldehyde on T-cell glucose metabolism were investigated in vitro. Human subjects were recruited for binge drinking and plasma cortisol and corticosterone measurement.

Results Ethanol feeding exacerbated ConA-induced hepatitis in WT mice but surprisingly attenuated it in *Aldh2*^{-/-} mice despite higher acetaldehyde levels in *Aldh2*^{-/-} mice. Elevation of serum cytokines and their downstream signals in the liver post-ConA injection was attenuated in ethanol-fed *Aldh2*^{-/-} mice compared to WT mice. In vitro exposure to acetaldehyde inhibited ConA-induced production of several cytokines without affecting their mRNAs in mouse splenocytes. Acetaldehyde also attenuated interferon- γ production in phytohaemagglutinin-stimulated human peripheral lymphocytes. Mechanistically, acetaldehyde interfered with glucose metabolism in T cells by inhibiting aerobic glycolysis-related signal pathways. Finally, compared to WT mice, ethanol-fed *Aldh2*^{-/-} mice had higher levels of serum corticosterone, a well-known factor that inhibits aerobic glycolysis. Blockade of corticosterone partially restored ConA-mediated hepatitis in ethanol-fed *Aldh2*^{-/-} mice. Acute alcohol drinking elevated plasma cortisol and corticosterone levels in human subjects with higher levels in those with inactive ALDH2 than those with active ALDH2.

Conclusions ALDH2 deficiency is associated with elevated acetaldehyde and glucocorticoids post-alcohol consumption, thereby inhibiting T-cell activation and hepatitis.

INTRODUCTION

Viral hepatitis and alcohol abuse are the two major causes of chronic liver disease worldwide, and both factors frequently coexist and synergistically

Significance of this study

What is already known on this subject?

- Aldehyde dehydrogenase 2 (ALDH2) is a key enzyme to detoxify acetaldehyde in the liver and exists in both active and inactive forms in humans.
- Approximately 35%–45% Asian people have inactive ALDH2 and develop ‘flushing syndrome’ after alcohol drinking due to acetaldehyde accumulation.
- Acetaldehyde is considered one of the major culprits to promote liver disease progression by inducing adduct formation and inflammatory response.
- Chronic ethanol feeding markedly exacerbates concanavalin A (ConA)-induced T cell hepatitis in mice.

What are the new findings?

- Chronic ethanol feeding markedly attenuates ConA-induced hepatitis and cytokines in *Aldh2*^{-/-} mice despite high levels of acetaldehyde in these mice.
- In vitro treatment with acetaldehyde inhibits production of cytokine proteins without affecting their mRNAs in activated mouse and human T cells. Acetaldehyde treatment inhibits glucose metabolism in T cells by inhibiting aerobic glycolysis-related signal pathways.
- *Aldh2*^{-/-} mice had higher levels of serum corticosterone than wild-type mice post ethanol feeding. Blockade of corticosterone with the glucocorticoid receptor antagonist RU486 partially restores ConA-mediated hepatitis in ethanol-fed *Aldh2*^{-/-} mice.
- Acute alcohol consumption elevates plasma cortisol and corticosterone levels in human subjects with much higher levels in those with inactive ALDH2 than those with active ALDH2.

promote liver disease progression;^{1–4} however, the underlying mechanisms remain obscure. In viral hepatitis, activation of T cells plays an important role in eliminating viruses and promotes

Significance of this study

How might it impact on clinical practice in the foreseeable future?

- Physicians should pay attention to the potential immunosuppression in alcoholics with inactive ALDH2 gene due to elevated levels of acetaldehyde and cortisol, which may contribute to the pathogenesis of alcohol-associated diseases in these subjects.

hepatocellular damage.^{5,6} Injection of concanavalin A (ConA), a T-cell mitogen, has been widely used to study how T-cell activation induces liver injury in mice.⁷⁻⁹ In this model, administration of ConA rapidly activates T cells and natural killer T (NKT) cells and subsequently activates Kupffer cells/macrophages, followed by producing a variety of proinflammatory cytokines (eg, tumor necrosis factor (TNF)- α , interferon (IFN)- γ) that cause hepatocyte injury via the activation of their downstream signals (eg, nuclear factor (NF)- κ B, signal transducer and activator of transcription 1 (STAT1)).^{10,11} Activated immune cells also produce several hepatoprotective cytokines (eg, interleukin (IL)-6, IL-22) that promote liver repair via the activation of STAT3.¹⁰⁻¹² We have previously demonstrated that chronic ethanol feeding exacerbated ConA-induced T-cell-mediated hepatitis via the upregulation of the TNF- α -NF- κ B signalling pathway and subsequent upregulation of chemokines/adhesive molecules and recruitment of leucocytes into the liver.¹³ In contrast, chronic ethanol feeding attenuates the activation of the hepatocyte survival signal STAT3 in T-cell hepatitis.¹³ Thus, alcohol consumption dysregulates the activation of cytokines and their downstream signals, thereby exacerbating T-cell hepatitis, which likely contributes to the synergistic effect of alcohol and viral hepatitis on liver disease progression. However, how alcohol promotes T-cell-mediated hepatitis is not clear. For example, does ethanol or its metabolites enhance T-cell activation and accelerate liver injury?

Ethanol is mainly metabolised in hepatocytes by cytosolic alcohol dehydrogenase to generate acetaldehyde, which is subsequently metabolised by mitochondrial acetaldehyde dehydrogenase 2 (ALDH2) to produce acetate.¹⁴ Many variants of human ALDH2 gene exist, but the most relevant ALDH2 variants are the ALDH2*1 and ALDH2*2 alleles. The ALDH2*1 allele encodes active acetaldehyde metabolising enzyme with G at nucleotide position 42421 (its corresponding glutamate at amino acid position 487), whereas the ALDH2*2 allele encodes inactive enzyme with A at position 42421 (its corresponding lysine at position 487). Individuals with homozygous ALDH2*1/1 have high levels of acetaldehyde metabolising activity in the liver, whereas those with homozygous ALDH2*2/2 have very low or undetectable enzyme activities. Individuals with heterozygous ALDH2*2/1 have approximately 80%–90% (not 50%) reduction in enzyme activities, which is because ALDH2 is the isotetramer enzyme and all four subunits of ALDH2 are required to be normal for keeping its full activity.¹⁵ The individuals with the inactive form of ALDH2, which is found in 35%–45% Asian population, develop ‘flushing syndrome’ after alcohol drinking, including facial flushing, palpitations and drowsiness.¹⁶ These unpleasant symptoms usually prevent these individuals from consuming large amounts of alcohol; however, many people with inactive ALDH2 still drink heavily and generate high levels of acetaldehyde, even after the consumption of only a moderate amount of alcohol.¹⁵⁻¹⁷ Acetaldehyde is considered one of the major culprits to promote liver disease progression by inducing adduct

formation and inflammatory responses.¹⁸⁻²⁰ Overexpression or activation of ALDH2 ameliorated alcohol-induced liver injury in mice.²¹⁻²³ In contrast, deletion of the *Aldh2* gene accelerated liver inflammation and fibrosis after carbon tetrachloride and/or alcohol treatment.²⁴ Thus, we hypothesised that ethanol-fed *Aldh2*^{-/-} mice, which have high levels of acetaldehyde, are more susceptible to ConA-induced T-cell hepatitis. To our surprise, ethanol-fed *Aldh2*^{-/-} mice were less sensitive to ConA-induced hepatitis than wild-type (WT) mice. Further studies demonstrated that ALDH2 deficiency and alcohol consumption were associated with high levels of acetaldehyde, cortisol and corticosterone, leading to attenuated T-cell activation both in mice and humans.

MATERIALS AND METHODS

Human subjects

Six healthy subjects with active ALDH2*1/*1 (G/G) and six healthy subjects with heterozygous inactive ALDH2*1/*2 (G/A) were recruited from the First Affiliated Hospital of Jilin University (Changchun, China) for isolation of peripheral blood mononuclear cells (PBMCs). Another 42 healthy subjects with active ALDH2*1/*1 (G/G) and 18 healthy subjects with inactive ALDH2*1/*2 (G/A) were recruited from the same hospital for measurement of plasma cortisol and corticosterone post one-time acute alcohol drinking (0.4 g/kg) (see the detailed information in online supplementary tables 1–2). All participants provided written informed consent.

Mice

Aldh2 knockout (KO) (^{-/-}) and WT C57BL/6N mice were fed a liquid diet containing 4% ethanol for 4 weeks as described previously.²⁴ All animal studies were approved by the NIAAA Animal Care and Use Committee.

Model of T-cell-induced hepatitis

T-cell-mediated hepatitis was induced by a single intravenous injection of 10 μ g/g body weight ConA as described previously.¹⁰

Statistical analysis

Data are expressed as the means \pm SEM and were analysed using GraphPad Prism software (La Jolla, California, USA). To compare values obtained from three or more groups, a one-way analysis of variance (ANOVA) was used, followed by Tukey posthoc test. To compare values obtained from two groups, the Student's t-test was performed. $P < 0.05$ was considered significant.

Other methods are described in online supplementary document.

RESULTS

ALDH2 deficiency attenuates ConA-induced hepatitis in response to chronic ethanol feeding in mice

We previously demonstrated that chronic ethanol feeding aggravated ConA-induced hepatitis in mice.¹³ Here we also confirmed that chronic ethanol feeding exacerbated ConA-induced liver injury in WT mice, as demonstrated by greater levels of serum alanine aminotransferase (ALT) and aspartate aminotransferase (AST), liver necrosis, hepatic neutrophil infiltration and hepatocyte death (as shown by terminal deoxynucleotidyl transferase dUTP nick end labeling (TUNEL) staining) in ethanol-fed WT+ConA vs pair-fed WT+ConA (figure 1A–D). Surprisingly, ethanol feeding markedly reduced ConA-induced liver injury in *Aldh2*^{-/-} mice, as demonstrated by lower levels of serum ALT and AST, liver necrosis, hepatic neutrophils and TUNEL⁺

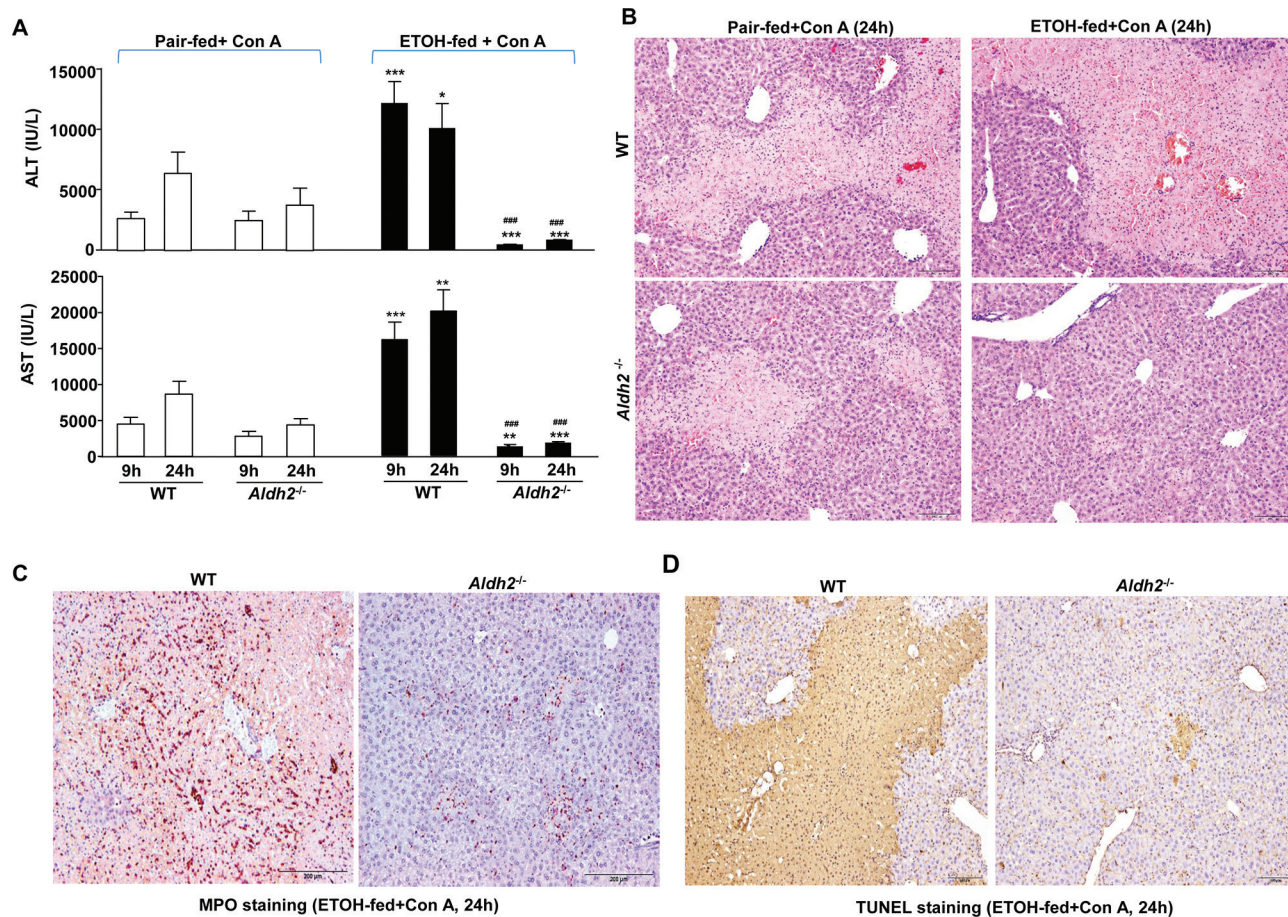


Figure 1 Chronic ethanol exacerbates ConA-induced liver injury in WT mice but attenuates it in *Aldh2*^{-/-} mice. WT and *Aldh2*^{-/-} mice were fed an ethanol diet or control diet for 4 weeks, followed by ConA injection. The mice were euthanised 9 hours and 24 hours after ConA injection. (A) Serum ALT and AST levels. (B,C,D) Representative H&E staining, MPO staining and TUNEL staining of liver tissues from the mice treated with ConA for 24 hours. The values represent means±SEM (n=8 in pair-fed WT or KO group, n=15 in ethanol-fed WT or KO group). *P<0.05; **P<0.01; ***P<0.001 in comparison with the corresponding pair-fed mice. ###P<0.001 in comparison with the corresponding ETOH-fed WT mice. ALT, alanine aminotransferase; AST, aspartate aminotransferase; ConA, concanavalin A; ETOH, ethanol; MPO, myeloperoxidase; TUNEL, terminal deoxynucleotidyl transferase dUTP nick end labeling; WT, wild type.

hepatocytes in ethanol-fed *Aldh2*^{-/-} mice vs pair-fed *Aldh2*^{-/-} mice post ConA injection (figure 1A–D). Compared with ethanol-fed WT mice, ethanol-fed *Aldh2*^{-/-} mice had much lower (approximately 100 times) levels of ALT and AST post-ConA injection (figure 1A), whereas without alcohol feeding, pair-fed WT and *Aldh2*^{-/-} mice had comparable levels of serum ALT and AST (figure 1A). Taken together, without alcohol feeding, WT and *Aldh2*^{-/-} mice have the same susceptibility to ConA-induced liver injury, whereas after alcohol feeding, *Aldh2*^{-/-} mice have much less ConA-induced hepatitis than WT mice.

ConA-induced elevation of serum cytokines and their downstream signals in the liver is attenuated in ethanol-fed *Aldh2*^{-/-} mice vs WT mice

Elevation of serum cytokines and activation of their downstream signals in the liver play a critical role in the control of ConA-induced hepatitis.^{10, 11} To understand the mechanisms by which ethanol feeding modulates ConA-induced hepatitis in WT and *Aldh2*^{-/-} mice, we measured serum levels of cytokines and their downstream signals in the liver. As illustrated in figure 2A, injection of ConA rapidly elevated serum levels of several cytokines in ethanol-fed WT mice. Such elevation was markedly attenuated in ethanol-fed *Aldh2*^{-/-} mice. In agreement with serum cytokine

levels, activation of their downstream signals including STAT1 and STAT3 in the liver was lower in ethanol-fed *Aldh2*^{-/-} mice than in ethanol-fed WT mice (figure 2B). For example, hepatic expression of pSTAT1 (activated STAT1) and pSTAT3 (activated STAT3) was still highly activated in ethanol-fed WT mice but not detected in ethanol-fed *Aldh2*^{-/-} mice 24 hours post ConA injection (figure 2B). In addition, hepatic expression of BCL-2 was higher in ethanol-fed *Aldh2*^{-/-} mice than in ethanol-fed WT mice, whereas hepatic expression of BCL-xL was comparable between these two groups (figure 2B).

Acetaldehyde inhibits production of cytokine proteins but not their mRNAs from ConA-stimulated mouse splenocytes in vitro

T and NKT cells are known to play an important role in ConA-induced hepatitis;^{25, 26} we wondered whether chronic ethanol feeding differentially affects these cells in WT and *Aldh2*^{-/-} mice. Our data revealed that the number of total T and NKT cells were not reduced and some of them were even higher in ethanol-fed *Aldh2*^{-/-} mice compared with ethanol-fed WT mice. In vitro incubation with acetaldehyde did not alter T-cell proliferation in ConA-stimulated WT mouse splenocytes (see details in online supplementary materials and online

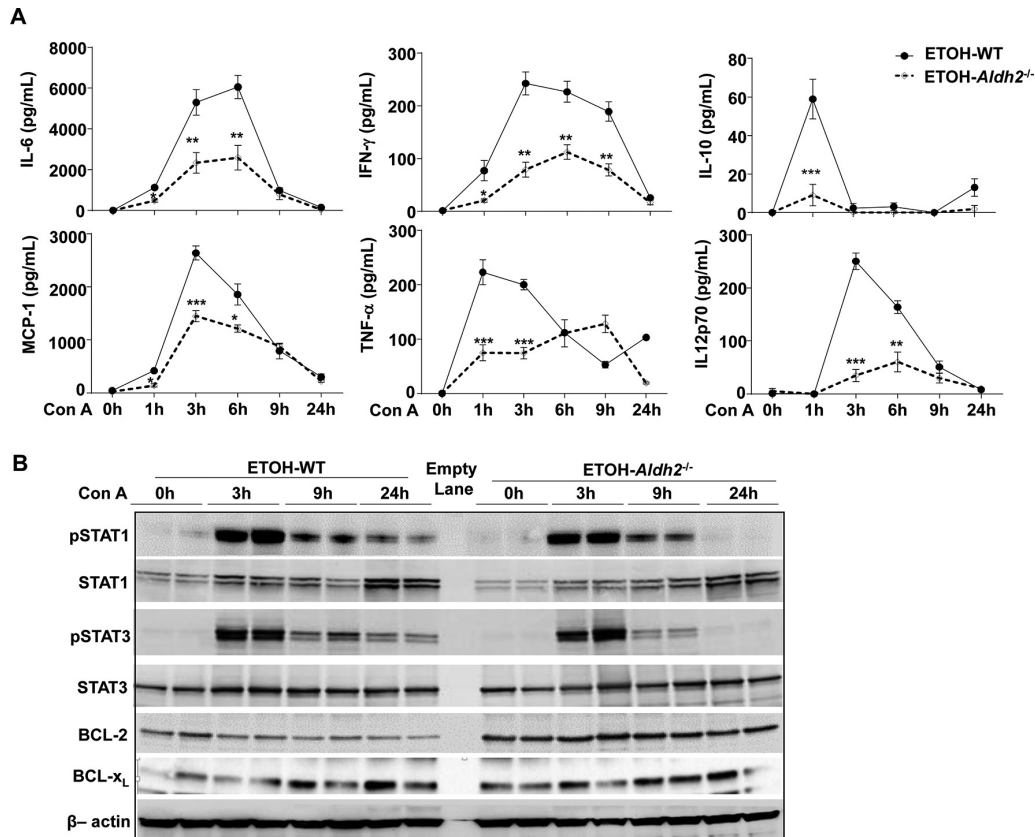


Figure 2 ConA-induced elevation of serum cytokines and their downstream signals in the liver are attenuated in ethanol-fed *Aldh2*^{-/-} mice compared with those in ethanol-fed WT mice. WT and *Aldh2*^{-/-} mice were fed an ethanol diet for 4 weeks, followed by ConA injection. (A) Serum samples were collected at different time points post-ConA injection and were subjected to measurement of cytokines. (B) Liver tissues were collected for western blot analyses. The values represent means±SEM (n=5–7 at each time point). *P<0.05; **P<0.01; ***P<0.001 in comparison with the corresponding WT groups. ConA, concanavalin A; ETOH, ethanol; IL, interleukin; MCP-1, monocyte chemoattractant protein-1; WT, wild type.

supplementary figures 1–4). Collectively, our data suggest that the reduced susceptibility of ethanol-fed *Aldh2*^{-/-} mice to ConA-induced T-cell hepatitis is not due to the reduced T and NKT-cell number.

To further understand the mechanisms by which ConA-induced T-cell hepatitis is attenuated in ethanol-fed *Aldh2*^{-/-} mice, we measured acetaldehyde levels from ethanol-fed mice and examined the effects of acetaldehyde on ConA-induced cytokine production from splenocytes *in vitro*. As illustrated in figure 3A, serum acetaldehyde levels were higher in ethanol-fed *Aldh2*^{-/-} mice than in ethanol-fed WT mice, whereas serum ethanol levels were comparable between these two groups. Because serum acetaldehyde levels were approximately 150 μM in chronic ethanol-fed *Aldh2*^{-/-} mice (figure 3A) and were even much higher in *Aldh2*^{-/-} mice after ethanol gavage, reaching to more than 200 μM^{27, 28} and acetaldehyde is very volatile at room temperature (the boiling point is 20.2°C), therefore, we used 200 μM acetaldehyde in mouse cell culture experiments. Figure 3B shows that treatment with acetaldehyde decreased protein levels of IL-2, IL-4 and TNF-α in the supernatant from splenocytes at early time points (24 hours) of ConA stimulation, whereas acetaldehyde reduced IFN-γ protein levels at all time points. Surprisingly, acetaldehyde treatment did not alter mRNA expression levels of these cytokines (figure 3C). These data suggest that acetaldehyde inhibits production of cytokine proteins but not their mRNAs from ConA-stimulated mouse splenocytes *in vitro*.

Acetaldehyde inhibits aerobic glycolysis in mouse T cells *in vitro*

Glucose metabolism plays a critical role in the regulation of T-cell activation and cytokine secretion.²⁹⁻³¹ Thus, we asked whether acetaldehyde inhibits T-cell cytokine production via the inhibition of T-cell metabolism. During activation, T cells use glycolysis to metabolise glucose despite the presence of oxygen, a procedure called aerobic glycolysis, which is critical for the efficient secretion of cytokines such as IFN-γ and IL-2.²⁹⁻³¹ One marker for aerobic glycolysis is the rapid consumption of glucose in the culture medium because aerobic glycolysis is less efficient in producing adenosine triphosphate (ATP) compared with oxidative glycolysis. Therefore, we analysed the glucose concentration in T-cell culture medium. As illustrated in figure 4A, acetaldehyde-treated T cells had higher levels of glucose in the medium than PBS-treated T cells 48 hours post-culture, indicating that acetaldehyde inhibits aerobic glycolysis. In agreement with these findings, acetaldehyde treatment downregulated the expression of glucose transporter 1 (*Glut1*) and hypoxia-inducible factor-1α (*Hif-1α*) (figure 4B), both are critical for aerobic glycolysis.²⁹⁻³¹ Furthermore, we analysed the glucose uptake by T cells by staining 2-[N-(7-nitrobenz-2-oxa-1,3-diazol-4-yl)amino]-2-deoxy-d-glucose (a fluorescent glucose analogue) and found that the fluorescence intensities in total T, CD4⁺ and CD8⁺ T cells were lower in acetaldehyde-treated cells than those in PBS-treated cells (figure 4C). Finally, we examined several signal pathways that are involved in aerobic glycolysis,

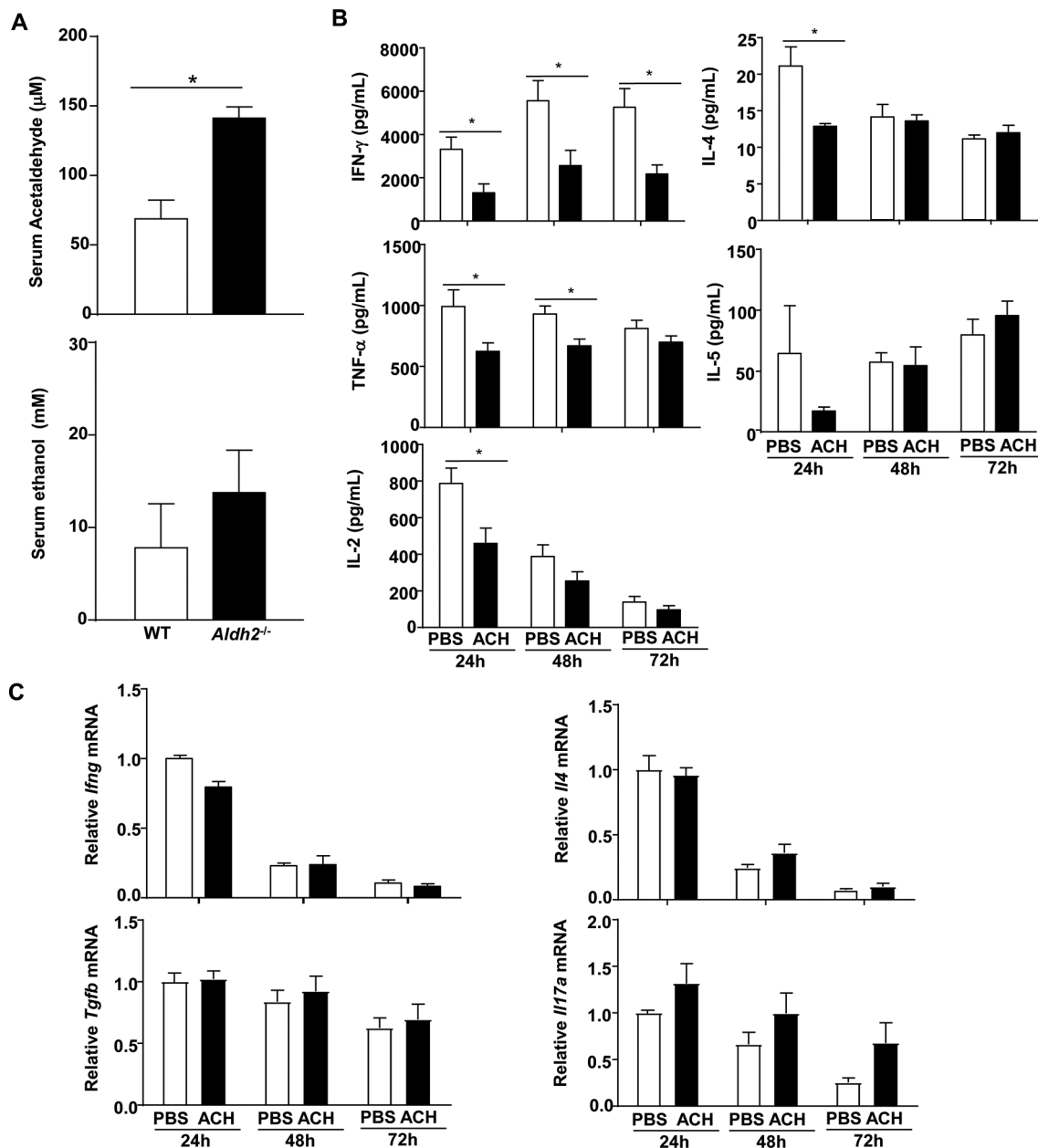


Figure 3 Acetaldehyde (ACH) attenuates ConA-induced T-cell response in mouse spleen cells *in vitro*. (A) WT and *Aldh2*^{-/-} mice were fed an ethanol diet for 4 weeks. Serum acetaldehyde and ethanol concentrations were measured. (B,C) Spleen cells from C57BL/6N mice were isolated and seeded on a 96-well plate with a same cell number/well. Acetaldehyde (200 μM) was added 5 hours prior to ConA was added. Levels of cytokines in the cell supernatant were measured (panel B). Cells were also harvested and subjected to real-time PCR analysis of cytokine mRNAs (panel C). The values represent means±SEM from three independent experiments. *P<0.05. ACH, acetaldehyde; ConA, concanavalin A; IL, interleukin; PBS, phosphate buffered saline; WT, wild type.

including mammalian target of rapamycin (mTOR), protein kinase B (PKB)/AKT, eukaryotic translation initiation factor 4E-binding protein 1 (4E-BP1).²⁹⁻³¹ As shown in figure 4D and online supplementary figure 5, acetaldehyde markedly reduced p-mTOR, p-AKT and p-4E-BP1 in ConA-activated T cells with the strongest inhibition of pAKT.

Acetaldehyde inhibits IFN-γ production and aerobic glycolysis from phytohaemagglutinin (PHA)-stimulated human T cells *in vitro*

ALDH2-inactive individuals are known to have much higher levels of acetaldehyde after alcohol consumption compared with those with normal *ALDH2*, reaching to approximately

100 μM.^{15,32} Thus, next we examined whether acetaldehyde also inhibits human T-cell cytokine production such as IFN-γ *in vitro*. As illustrated in figure 5A, *in vitro* treatment with acetaldehyde markedly inhibited T-cell mitogen PHA-stimulated IFN-γ production in T cells from individuals with normal *ALDH2* (*ALDH2**1*/1*) or with inactive *ALDH2* (*ALDH2**1*/2*) in a dose-dependent manner. Such inhibition was comparable between those T cells of normal *ALDH2* and inactive *ALDH2* individuals (figure 5A and online supplementary figure 6). Lack of difference in inhibition of IFN-γ production between normal *ALDH2* and *ALDH2* deficient T cells is probably because lymphocytes such as T cells express low levels of *ALDH2* and do not efficiently metabolise acetaldehyde.³³

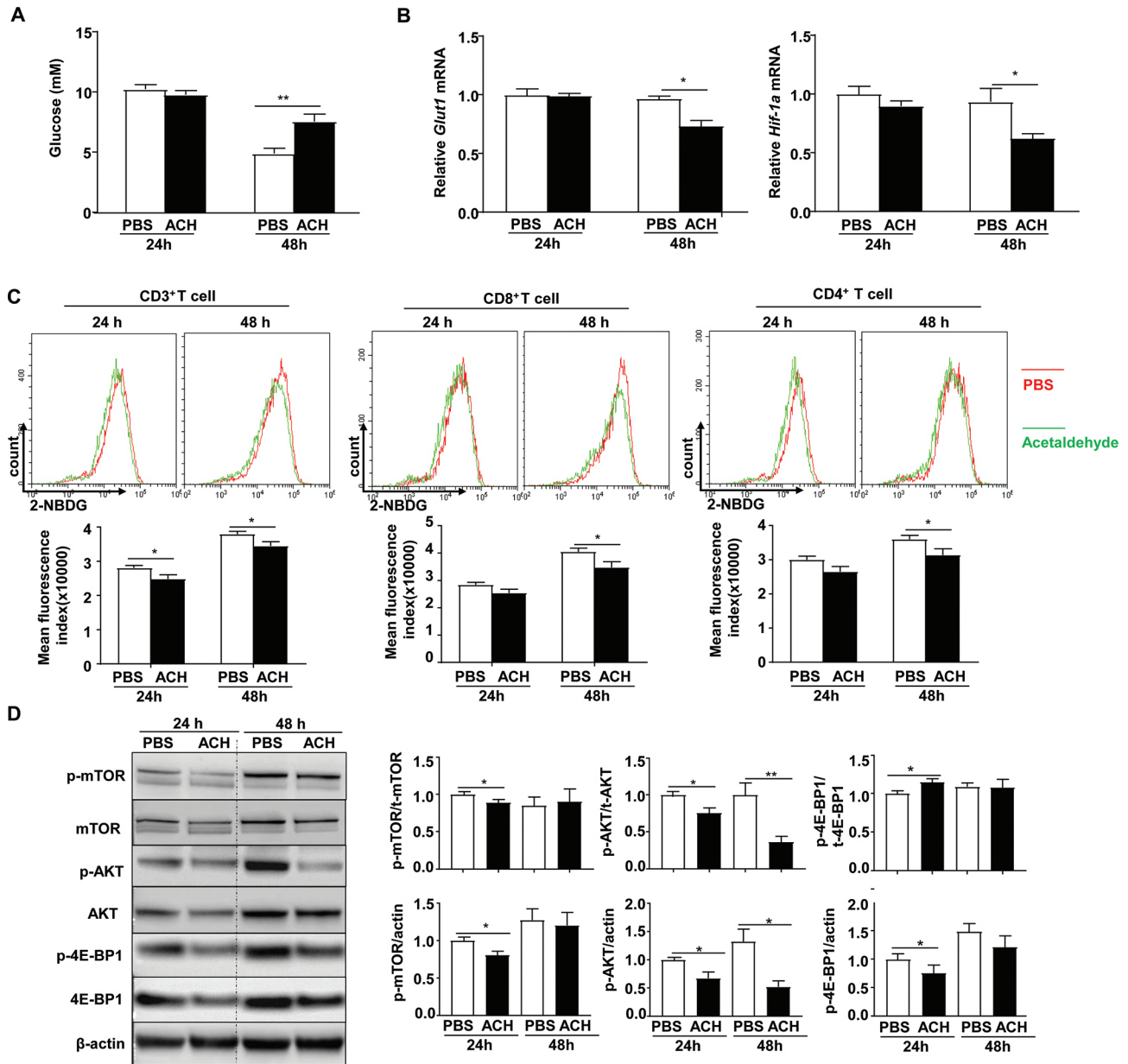


Figure 4 Acetaldehyde (ACH) reduces aerobic glycolysis in mouse T cells in vitro. C57BL/6N mouse splenocytes were treated with acetaldehyde (200 μ M) or PBS for 5 hours, followed by stimulation with ConA. (A) The supernatant glucose concentrations were measured 24 and 48 hours post-ConA stimulation. (B) Expression of *Glut1* and *Hif-1a* mRNA was measured by using real-time PCR analysis. (C) The glucose uptake in total T cells, CD4⁺ T cells and CD8⁺ T cells were measured with 2-NBDG incorporation assay 24 and 48 hours after ConA stimulation. (D) Western blot analyses of phosphorylated mTOR, AKT and 4E-BP1 24 and 48 hours post-ConA stimulation. Left panel shows representative western blot images (all original blots are shown in online supplementary figure 5) and right panel shows the density quantification. The values represent means \pm SEM (n=4–6 independent experiments), *P<0.05; **P<0.01. ACH, acetaldehyde; AKT, protein kinase B; 4E-BP1, 4E-binding protein 1; ConA, concanavalin A; mTOR, mammalian target of rapamycin; 2-NBDG:2-[N-(7-nitrobenz-2-oxa-1,3-diazol-4-yl)amino]-2-deoxy-d-glucose; PBS, phosphate buffered saline.

Figure 5B–C shows that treatment with acetaldehyde significantly increased glucose levels in the supernatant but downregulated expression of *GLUT1* and *HIF-1A* mRNAs in PHA-stimulated human T cells, suggesting that acetaldehyde also inhibits aerobic glycolysis in human T cells. In agreement with the data from figure 5B–C, activation of aerobic glycolysis pathways especially pAKT was markedly suppressed by acetaldehyde in PHA-stimulated human T cells 24 and 48 hours post-treatment (figure 5D, online supplementary figure 7). Moreover, online supplementary figure 8 shows that acetaldehyde did not affect the expression of phosphatase and tensin homolog (PTEN) and

protein phosphatase 2 (PP2A) (both inhibit AKT activation^{34,35}) in PHA-stimulated human T cells.

The above data show that acetaldehyde inhibits T-cell cytokine secretion by inhibiting the AKT pathway 24 and 48 hours post-treatment. A recent study reported that activation of the pyruvate dehydrogenase (PDH) kinase 1 (PDHK1)-PDH pathway contributes to early T-cell activation, lactate and cytokine production.³⁶ To examine whether acetaldehyde also regulates early T-cell cytokine production, we measured PHA-induced cytokine, lactate production and activation of several signalling pathways 1 and 6 hours post-PHA stimulation. As illustrated in

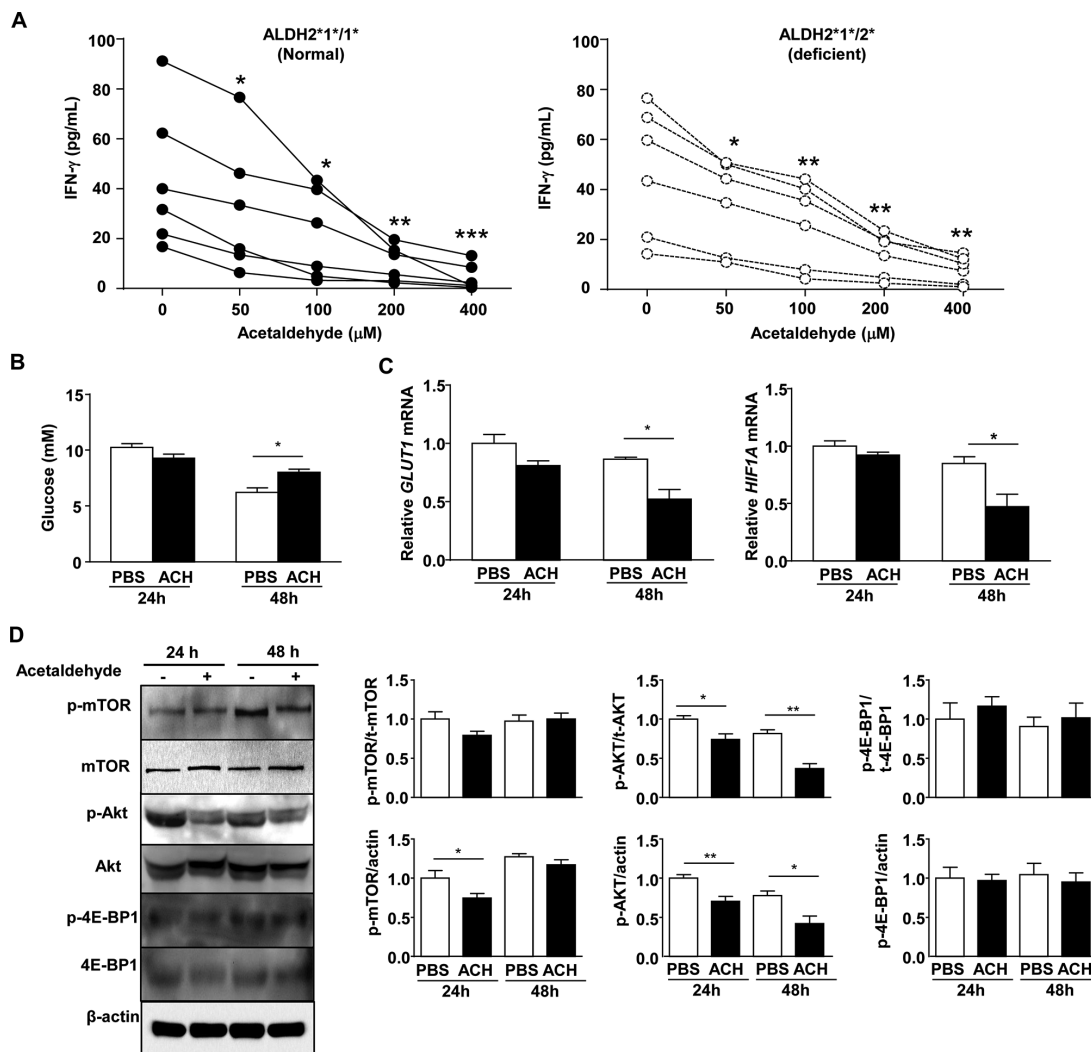


Figure 5 Acetaldehyde (ACH) attenuates PHA-induced T-cell response and aerobic glycolysis in human PBMCs and T cells in vitro. (A) PBMCs were isolated from six healthy volunteers with active ALDH2 and six healthy volunteers with inactive ALDH2 and seeded on a 96-well plate with a same cell number/well. Acetaldehyde (50–400 μ M) was added 5 hours before PHA was added. Levels of cytokines in the cell supernatant were measured 48 hours post-PHA stimulation. * P <0.05; ** P <0.01; *** P <0.001 in comparison with the corresponding group without acetaldehyde treatment (0 μ M). (B–D) T cells were isolated from human PBMCs and treated with acetaldehyde (100 μ M) or PBS for 5 hours, followed by stimulation with PHA for 24 and 48 hours. The supernatant glucose concentrations were measured 24 and 48 hours post-PHA stimulation (panel B); expressions of *GLUT1* and *HIF-1A* mRNA were measured by using real-time PCR analysis (panel C). (D) Western blot analyses of phosphorylated mTOR, AKT and 4E-BP1 24 and 48 hours post-PHA stimulation. Left panel shows representative western blot images (all original blots are shown in online supplementary figure 7), and right panel shows the density quantification. In panels B–D, the values represent means \pm SEM (n =6 independent experiments), * P <0.05, ** P <0.01. ACH, acetaldehyde; AKT, protein kinase B; ALDH2, aldehyde dehydrogenase 2; 4E-BP1, 4E-binding protein 1; IFN, interferon; mTOR, mammalian target of rapamycin; PBMC, peripheral blood mononuclear cell; PBS, phosphate buffered saline; PHA, phytohaemagglutinin.

online supplementary figure 8 and online supplementary figure 9A–B, acetaldehyde treatment neither affected cytokine and lactate production nor altered the phosphorylation of PDH, an enzymatic target of PDHK1,³⁶ at 1 and 6 hours post-PHA treatment, suggesting acetaldehyde does not affect activation of the PDHK1-PDH-lactate pathway. In addition, acetaldehyde treatment did not affect the m-TOR-AKT activation 1 and 6 hours post-PHA treatment (online supplementary figure 9C). Collectively, acetaldehyde treatment seems not affecting early T-cell cytokine production.

Finally, we also examined the effect of acetaldehyde on PKA activation that is involved in metabolic metabolism and T-cell activation.³⁷ As illustrated in online supplementary figure 10, PKA activity was comparable in PHA-treated cells with or

without acetaldehyde treatment, suggesting that acetaldehyde does not affect PKA activation in PHA-treated human T cells.

Corticosterone contributes to the resistance of ethanol-fed *Aldh2*^{-/-} mice to ConA-induced hepatitis

The above data show acetaldehyde attenuates T-cell cytokine production by inhibiting aerobic glycolysis, contributing to the resistance of *Aldh2*^{-/-} mice to ConA-induced hepatitis. Corticosteroids also inhibit aerobic glycolysis in immune cells.^{38,39} Chronic ethanol consumption is associated with elevation of corticosteroids in the blood⁴⁰ and treatment with corticosteroids attenuated ConA-induced hepatitis.⁴¹ Thus, we asked whether the reduced susceptibility to ConA-induced hepatitis in ethanol-fed *Aldh2*^{-/-} mice was also due to elevation of corticosteroids. As illustrated in figure 6A, serum

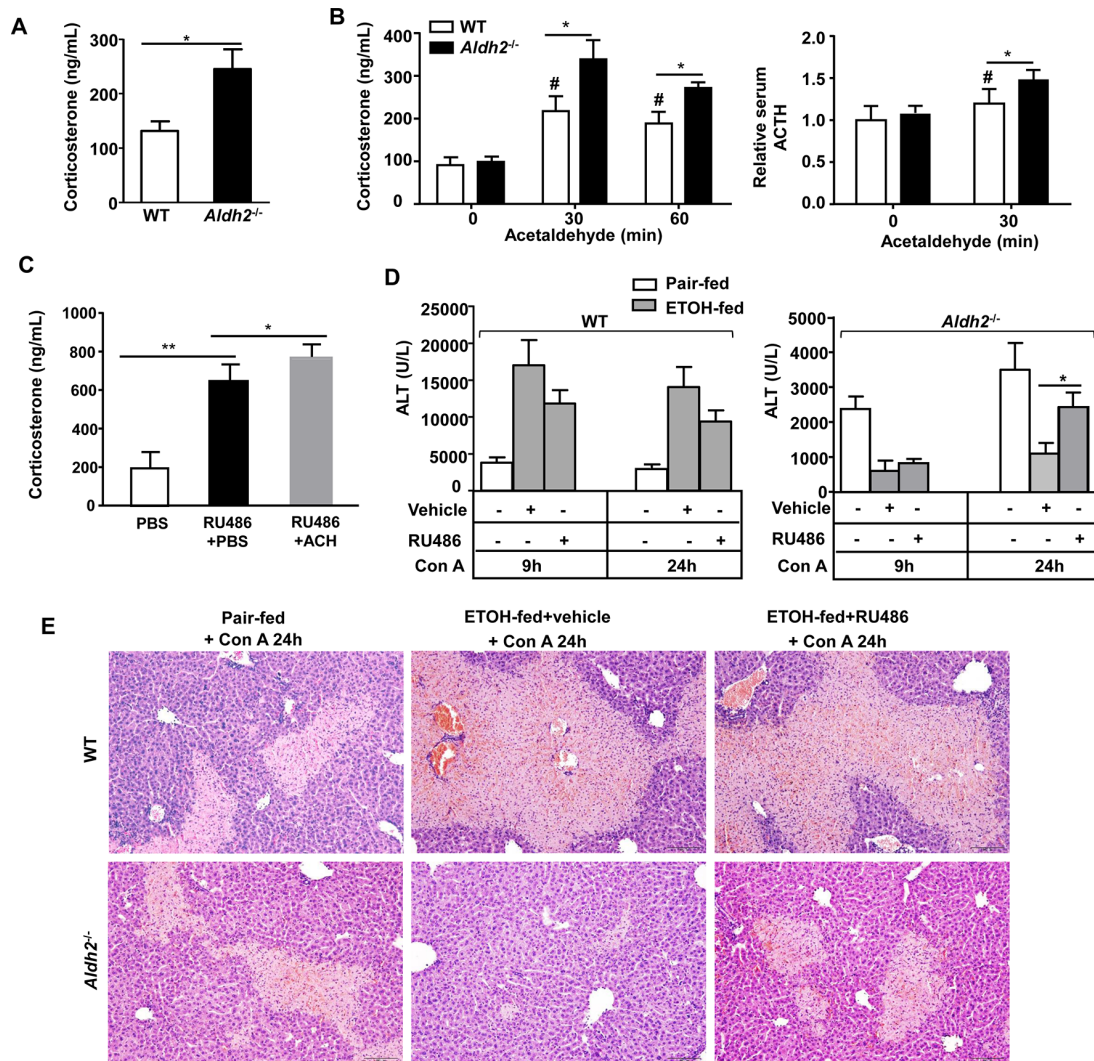


Figure 6 Chronic ethanol feeding induces higher serum corticosterone levels in *Aldh2*^{-/-} mice than in WT mice, and treatment with the steroid antagonist partially restores ConA-induced liver injury in *Aldh2*^{-/-} mice. (A) WT and *Aldh2*^{-/-} mice were fed an ethanol diet for 4 weeks. Serum corticosterone levels were measured. (B) WT and *Aldh2*^{-/-} mice were injected intraperitoneally with 200 mg/kg body weight acetaldehyde. Serum corticosterone and ACTH levels were measured 30 and 60 min post injection. The values in panels A and B represent means±SEM (n=5 in WT and KO). *P<0.05 as indicated. #P<0.05 in comparison with WT groups without acetaldehyde treatment. (C) WT mice were injected RU486 (35 mg/kg body weight, a single injection), 1 hour later, PBS or acetaldehyde (200 mg/kg body weight) was injected. Serum corticosterone levels were measured 30 min post-PBS or acetaldehyde injection. The values represent means±SEM (n=6). *P<0.05, **P<0.01 as indicated. (D,E) WT and *Aldh2*^{-/-} mice were fed an ethanol or control diet for 4 weeks. At the end of 4 weeks, mice were treated with vehicle or the steroid antagonist RU486 (10 mg/kg/day) for 3 days, followed by ConA injection. Serum ALT levels were measured (panel D) and representative H&E staining of liver tissues are shown (panel E). The values represent means±SEM (n=4 in pair-fed group, n=8 in ethanol-fed groups with vehicle or RU486 treatment). *P<0.05. ACTH, adrenocorticotropic hormone; ALT, alanine aminotransferase; ConA, concanavalin A; ETOH, ethanol; WT, wild type.

corticosterone levels were higher in ethanol-fed *Aldh2*^{-/-} mice vs WT mice. To examine whether acetaldehyde, which is higher in ethanol-fed *Aldh2*^{-/-} mice, contributes to corticosterone release, we injected mice with acetaldehyde. As illustrated in figure 6B, acetaldehyde injection elevated serum levels of corticosterone and adrenocorticotropic hormone (ACTH, which stimulates corticosterone release) in both WT and *Aldh2*^{-/-} mice with higher levels in the latter group. In addition, it is well known that glucocorticoids can exert negative feedback on both the hypothalamus and pituitary gland by targeting glucocorticoid receptor (GR) to reduce corticosterone levels. Ethanol can disrupt this feedback loop by interfering with glucocorticoid response element-DNA binding and downregulating GR expression in various brain regions,⁴² thereby elevating corticosterone levels. Then we asked whether acetaldehyde also

targets GR to elevate corticosterone levels. To answer this question, mice were treated with RU486, which blocked GR, followed by injection of acetaldehyde. As illustrated in figure 6C, injection of RU486 markedly elevated serum corticosterone levels, which was further increased after acetaldehyde injection, suggesting acetaldehyde elevates corticosterone independent of GR.

Figure 6D shows that in WT mice, chronic ethanol feeding increased ConA-induced elevation of serum ALT compared with the pair-fed group 9 and 24 hours post-ConA injection. This elevation was not affected by the treatment with the steroid antagonist RU486. In *Aldh2*^{-/-} mice, chronic ethanol feeding decreased serum ALT levels compared with the pair-fed group at both 9 and 24 hours after ConA injection. Treatment with RU486 restored elevation of serum ALT levels 24 hours post-ConA injection. In

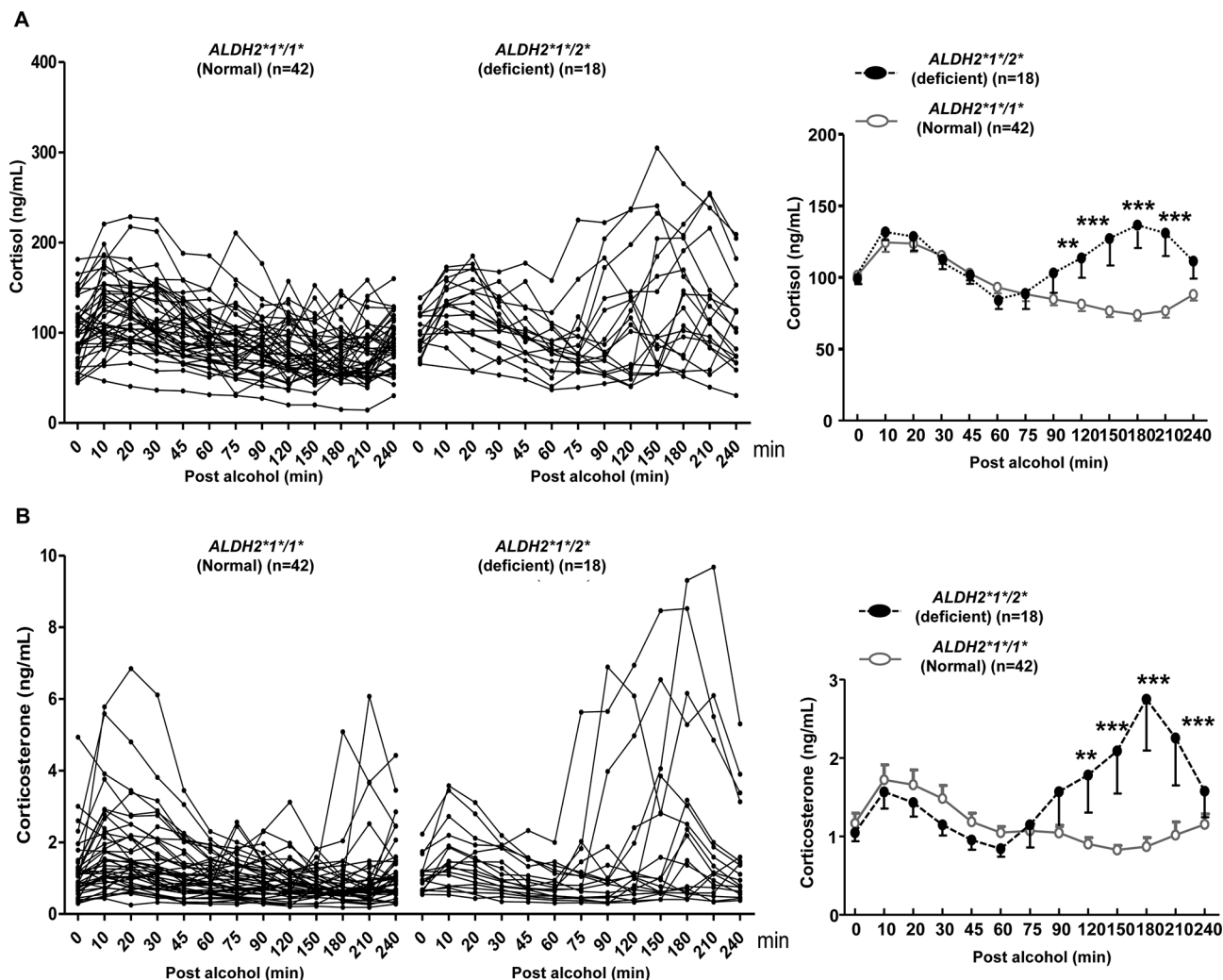


Figure 7 Acute alcohol consumption induces much higher plasma levels of cortisol and corticosterone in ALDH2-inactive human subjects than in those with normal ALDH2. Individuals with active ALDH2 or inactive ALDH2 were recruited and subjected to acute alcohol drinking (0.4 g/kg). Plasma samples were collected and subjected to cortisol (panel A) and corticosterone (panel B) measurement. Individual data from each subject are presented in the left panels. Summarised data are presented in the right panel. Values represent means \pm SEM. * $P < 0.05$; ** $P < 0.01$ and *** $P < 0.001$ in comparison with corresponding time points in individuals with normal ALDH2. ALDH2, aldehyde dehydrogenase 2.

addition, RU486 treatment did not affect liver necrosis in ethanol-fed WT mice, but partially restored it in ethanol-fed *Aldh2*^{-/-} mice post-ConA injection (figure 6E).

Acute alcohol consumption elevates higher plasma levels of cortisol and corticosterone in human subjects with ALDH2 deficiency than those with normal ALDH2

While in rodents, corticosterone is the main glucocorticoid produced by the adrenal glands cortex, in human, cortisol is the primary glucocorticoid. Thus, we measured both cortisol and corticosterone in human subjects with inactive or active ALDH2 post-alcohol consumption. As illustrated in figure 7, serum cortisol and corticosterone levels were rapidly elevated with 10–20 min after acute alcohol drinking in both groups with no differences. Serum cortisol and corticosterone levels returned to normal levels after 60 min in individuals with normal ALDH2. Interestingly, in individuals with ALDH2 deficiency, serum cortisol and corticosterone levels also declined to normal levels 60 min post drinking, but further elevated again at later time points with a peak occurring at 180 min post drinking. Serum cortisol and corticosterone levels at later time points in

ALDH2-deficient individuals were much higher than those at earlier time points.

DISCUSSION

In the current study, we revealed some unexpected interesting findings that chronic ethanol exposure reduced rather than enhanced T-cell hepatitis in *Aldh2*^{-/-} mice, which is in contrast to ethanol exacerbation of T-cell hepatitis in WT mice.¹³ Mechanistically, we found that acetaldehyde directly inhibited T-cell glucose metabolism and cytokine release, which contributed to the suppressed T-cell hepatitis in *Aldh2*^{-/-} mice after alcohol consumption. In addition, mice and human subjects with ALDH2-deficiency have higher levels of corticosterone and cortisol after alcohol consumption than those with normal ALDH2, which may also contribute to the resistance of ethanol-fed *Aldh2*^{-/-} mice to ConA-induced T-cell hepatitis. We have integrated our findings into a model depicting the mechanisms by which ALDH2 deficiency is associated with attenuated T-cell response post alcohol consumption (figure 8).

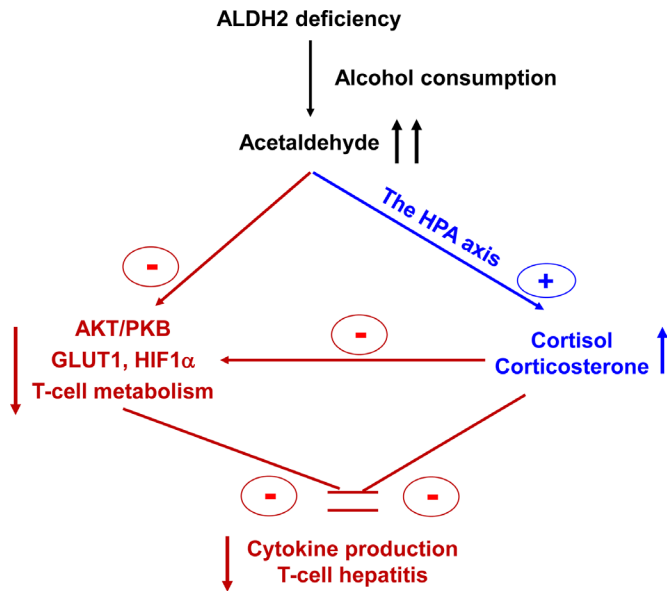


Figure 8 A model illustrating the mechanisms by which ALDH2 deficiency is associated with T-cell suppression post-alcohol consumption. ALDH2-deficient individuals post-alcohol consumption is associated with high levels of acetaldehyde, which can directly block T-cell cytokine production via the inhibition of AKT activation and glucose metabolism or indirectly attenuate T-cell response via the elevation of corticosteroids. '+' means promotion, '-' means suppression. ALDH2, aldehyde dehydrogenase 2; AKT, protein kinase B; GLUT1, glucose transporter 1; HPA, hypothalamic-pituitary-adrenal; PKB, protein kinase B.

Acetaldehyde is believed to be very toxic,¹⁸⁻²⁰ thus we originally hypothesised that ethanol-fed *Aldh2*^{-/-} mice, which had higher acetaldehyde levels compared with WT mice after alcohol feeding, are more sensitive to ConA-induced hepatitis. To our surprise, we found that ethanol-fed *Aldh2*^{-/-} mice were resistant to ConA-induced hepatitis and elevation of serum cytokines, but equally susceptible to lipopolysaccharide (LPS)-induced elevation of serum cytokines as WT mice (online supplementary figure 11), suggesting that the reduced susceptibility of ethanol-fed *Aldh2*^{-/-} mice to ConA-induced hepatitis is specific to this model, which is due to suppression of ConA-induced T-cell activation. Our mechanistical studies suggest that one of the mechanisms by which ConA-induced hepatitis is suppressed in ethanol-fed *Aldh2*^{-/-} mice is acetaldehyde-mediated direct inhibition of T-cell cytokine production without affecting T-cell proliferation. Furthermore, we identified a novel mechanism by which acetaldehyde inhibits T-cell cytokine production via the suppression of T-cell glucose metabolism. During activation, T cells uptake glucose via the upregulation of *Glut1* expression, followed by generation of energy to promote cytokine secretion.^{29,30} Here, we provided several lines of evidence suggesting that acetaldehyde inhibits glucose metabolism in T cells via the downregulation of *Glut1* expression and inhibition of several metabolic signalling pathways. First, in vitro exposure to acetaldehyde reduced glucose uptake in cultured T cells, indicating that acetaldehyde reduces glucose metabolism in T cells. Second, incubation with acetaldehyde downregulated expression of two important genes involved in aerobic glycolysis, *Glut1* and *Hif-1a* in T cells.²⁹⁻³¹ Third, several metabolic signal pathways including mTOR, AKT, 4E-BP1, which are involved in aerobic glycolysis in T cells,²⁹⁻³¹ were suppressed after exposure to acetaldehyde in

vitro with the strongest inhibition of pAKT activation. Interestingly, although acetaldehyde treatment induced strong inhibition of AKT, such treatment did not affect the expression of PTEN and PP2A proteins (both inhibit AKT activation),^{34,35} suggesting that acetaldehyde-mediated inhibition of AKT is independent of PTEN and PP2A. It is known that many other factors also affect AKT activation, including a wide variety of cytokines, growth factors and hormones as well as cross-talk with other signalling pathways.⁴³ Whether acetaldehyde inhibits AKT activation by affecting these pathways requires further extensive studies. In addition to AKT activation, activation of the PDHK1-PDH pathway contributes to early T-cell activation and cytokine production.³⁶ Interestingly, our data revealed that activation of this pathway and early T-cell cytokine production was not altered by acetaldehyde. Collectively, inhibition of AKT is probably the major mechanism contributing to acetaldehyde-mediated inhibition of cytokine production and glucose metabolism in T cells. Finally, epigenetic regulation has been suggested to play a complex role in controlling T-cell activation, cytokine production and glucose metabolism, which still remains poorly understood.⁴⁴ Acetaldehyde and its metabolite acetate are known to affect gene expression at the epigenetic level (histone acetylation for instance).⁴⁵ However, whether acetaldehyde inhibits T-cell cytokine production and glucose metabolism via the epigenetic regulation is not clear and requires extensive future studies to answer this question.

In the current paper, we have also identified an additional important mechanism underlying immunosuppression of T cells in ethanol-fed *Aldh2*^{-/-} mice that is due to high levels of glucocorticoid, a well-known factor that inhibits aerobic glycolysis in immune cells by downregulating HIF- α and GLUT1 and subsequently suppresses immune cell functions.^{38,39} First, ethanol-fed *Aldh2*^{-/-} mice had higher levels of corticosterone than WT mice. Second, injection of the synthetic glucocorticoid prednisolone blunted ConA-induced hepatitis in mice.⁴¹ Last, in vivo treatment with the GR antagonist RU486 partially restored ConA-induced hepatitis in ethanol-fed *Aldh2*^{-/-} mice. Higher levels of corticosterone in ethanol-fed *Aldh2*^{-/-} mice were probably due to higher levels of acetaldehyde in these mice versus ethanol-fed WT mice because acetaldehyde can directly stimulate corticosterone release with 10 times more potency than ethanol.⁴⁶⁻⁴⁸ Importantly, we also demonstrated that acute alcohol drinking rapidly elevated serum levels of both cortisol and corticosterone in human subjects with much higher levels in those with ALDH2 deficiency. Serum cortisol and corticosterone levels were rapidly elevated within 10–20 min in human subjects with normal ALDH2 or ALDH2 deficiency. Interestingly, serum corticosteroid levels were further elevated at later time points (between 120 and 210 min) in the individuals with inactive ALDH2 but not in those with normal ALDH2. It was reported that after binge drinking, blood ethanol levels were rapidly elevated in both active and inactive ALDH2 individuals, whereas blood acetaldehyde elevation was delayed with much higher levels in ALDH2-deficient individuals than in those with normal ALDH2.¹⁵ Given acetaldehyde is 10 times more potent than ethanol to stimulate corticosterone release in vivo,⁴⁸ we speculate that the delayed elevation and high levels of serum corticosteroids in ALDH2-deficient individuals after alcohol drinking was due to accumulated acetaldehyde in these subjects.^{15,16}

The mechanisms by which acetaldehyde elevates serum corticosteroid levels have been explored previously by several

studies. Treatment of ethanol-fed rats with cyanamide (ALDH2 inhibitor) elevated plasma levels of acetaldehyde and corticosterone concentrations along with upregulation of corticotropin-releasing hormone (CRH) in the paraventricular nucleus and pro-opiomelanocortin in the anterior pituitary, suggesting a role of acetaldehyde in activating the hypothalamic-pituitary-adrenal (HPA) axis.⁴⁹ Furthermore, *ex vivo* studies revealed that incubation with acetaldehyde directly stimulated CRH release from hypothalamic explants in a dose-dependent manner.⁵⁰ In the current study, we demonstrated that injection of acetaldehyde directly elevated serum corticosterone and ACTH levels in both WT and *Aldh2*^{-/-} mice with much higher levels in the latter group. The contribution of corticosterone to the suppressed T-cell hepatitis in ethanol-fed *Aldh2*^{-/-} mice was demonstrated by the fact that blockade of corticosterone with the steroid antagonist RU486 restored T-cell hepatitis in these mice. Interestingly, such restoration was only partial, suggesting additional mechanisms (such as acetaldehyde directly inhibits T-cell function) are also involved. Collectively, ALDH2-deficiency-associated high levels of acetaldehyde post-alcohol consumption can directly stimulate HPA axis and corticosteroid release, resulting in suppression of T cells. Although the immunosuppressive effects of corticosteroids have been well documented in a variety of immune cells including T cells,⁵¹ the exact mechanisms underlying corticosterone-mediated inhibition of ConA-induced hepatitis in ethanol-fed *Aldh2*^{-/-} mice remain obscure. For example, it is not clear whether corticosterone inhibition of ConA-induced hepatitis in these mice is mediated by directly targeting GR on T cells and/or other types of immune cells. This question can be answered by using immune cell-specific GR and global *Aldh2* double knockout mice in future studies.

In summary, ALDH2 deficiency is associated with suppression of T-cell functions post-alcohol consumption, which is due to elevation of corticosteroid and acetaldehyde levels. Such T-cell suppression may attribute to the increased risk of alcohol-related cancers and diseases in ALDH2-deficient individuals.⁵² Future studies on this area may help identify novel mechanisms and therapeutic strategies for those alcohol-associated maladies in ALDH2-inactive individuals.

Author affiliations

¹Laboratory of Liver Diseases, National Institute on Alcohol Abuse and Alcoholism, National Institutes of Health, Bethesda, Maryland, USA

²Department of Hepatology, First Affiliated Hospital, Jilin University, Changchun, China

³Center for Translational Biomedical Research, University of North Carolina at Greensboro, Kannapolis, North Carolina, USA

⁴Laboratory of Cardiovascular Physiology and Tissue Injury, National Institutes of Health/NIAAA, Bethesda, Maryland, USA

Contributors YG, ZZ and TR planned and conducted the animal and cell culture study and clinical study, analysed the data and wrote the paper. S-JK, YH, WS, AG, WW, DF, MX and EH conducted some experiments related to mice and cell culture. YD, RV, SS, XW and HZ performed some human PBMC experiments and measurement of human cortisol and corticosterone. WZ and ZXZ measured serum ethanol and acetaldehyde levels. PP analysed the data and edited the paper. JN planned and conducted clinical study, analysed the data and edited the paper. BG designed the whole project, supervised the study and wrote the paper.

Funding This work was supported by the intramural program of NIAAA, NIH (BG) and Natural Science and Technology Major Project (2014ZX10002002) (JN). YG was supported by Chinese National Science Foundation Scholarship.

Competing interests None declared.

Patient consent Obtained.

Ethics approval The First Affiliated Hospital of Jilin University Institutional Review Board and the Research and Development Committee.

Provenance and peer review Not commissioned; externally peer reviewed.

Open access This is an open access article distributed in accordance with the Creative Commons Attribution Non Commercial (CC BY-NC 4.0) license, which permits others to distribute, remix, adapt, build upon this work non-commercially, and license their derivative works on different terms, provided the original work is properly cited, appropriate credit is given, any changes made indicated, and the use is non-commercial. See: <http://creativecommons.org/licenses/by-nc/4.0/>.

REFERENCES

- 1 Gitto S, Vitale G, Villa E, *et al.* Update on Alcohol and Viral Hepatitis. *J Clin Transl Hepatol* 2014;2:228–33.
- 2 Serfaty L. Clinical Implications of Concomitant Alcohol Use, Obesity, and Viral Hepatitis. *Gastroenterology* 2016;150:1718–22.
- 3 Setiawan VW, Stram DO, Porcel J, *et al.* Prevalence of chronic liver disease and cirrhosis by underlying cause in understudied ethnic groups: The multiethnic cohort. *Hepatology* 2016;64:1969–77.
- 4 Vandenbulcke H, Moreno C, Colle I, *et al.* Alcohol intake increases the risk of HCC in hepatitis C virus-related compensated cirrhosis: A prospective study. *J Hepatol* 2016;65:543–51.
- 5 Lang KS. Host mechanisms in viral hepatitis. *Dig Dis* 2010;28:25–30.
- 6 Rosen HR, Miner C, Sasaki AW, *et al.* Frequencies of HCV-specific effector CD4+ T cells by flow cytometry: correlation with clinical disease stages. *Hepatology* 2002;35:190–8.
- 7 Horst AK, Wegscheid C, Schaefers C, *et al.* Carcinoembryonic antigen-related cell adhesion molecule 1 controls IL-2-dependent regulatory T-cell induction in immune-mediated hepatitis in mice. *Hepatology* 2018;68:200–14.
- 8 He GW, Günther C, Kremer AE, *et al.* PGAM5-mediated programmed necrosis of hepatocytes drives acute liver injury. *Gut* 2017;66:716–23.
- 9 Shan Z, Liu X, Chen Y, *et al.* Chitinase 3-like-1 promotes intrahepatic activation of coagulation through induction of tissue factor in mice. *Hepatology* 2018;67:2384–96.
- 10 Hong F, Jaruga B, Kim WH, *et al.* Opposing roles of STAT1 and STAT3 in T cell-mediated hepatitis: regulation by SOCS. *J Clin Invest* 2002;110:1503–13.
- 11 Tiegs G. Cellular and cytokine-mediated mechanisms of inflammation and its modulation in immune-mediated liver injury. *Z Gastroenterol* 2007;45:63–70.
- 12 Lu Z, Liu J, Liu X, *et al.* MicroRNA 15a/16-1 suppresses aryl hydrocarbon receptor-dependent interleukin-22 secretion in CD4+ T cells and contributes to immune-mediated organ injury. *Hepatology* 2018;67:1027–40.
- 13 Jaruga B, Hong F, Kim WH, *et al.* Chronic alcohol consumption accelerates liver injury in T cell-mediated hepatitis: alcohol dysregulation of NF-kappaB and STAT3 signaling pathways. *Am J Physiol Gastrointest Liver Physiol* 2004;287:G471–G479.
- 14 Zakhari S, Li TK, Tk L. Determinants of alcohol use and abuse: Impact of quantity and frequency patterns on liver disease. *Hepatology* 2007;46:2032–9.
- 15 Enomoto N, Takase S, Yasuhara M, *et al.* Acetaldehyde metabolism in different aldehyde dehydrogenase-2 genotypes. *Alcohol Clin Exp Res* 1991;15:141–4.
- 16 Gross ER, Zambelli VO, Small BA, *et al.* A personalized medicine approach for Asian Americans with the aldehyde dehydrogenase 2*2 variant. *Annu Rev Pharmacol Toxicol* 2015;55:107–27.
- 17 O'Shea T, Thomas N, Webb BT, *et al.* ALDH2*2 and peer drinking in East Asian college students. *Am J Drug Alcohol Abuse* 2017;43:678–85.
- 18 Setshedi M, Wands JR, Monte SM. Acetaldehyde adducts in alcoholic liver disease. *Oxid Med Cell Longev* 2010;3:178–85.
- 19 Hou G, Chen L, Liu G, *et al.* Aldehyde dehydrogenase-2 (ALDH2) opposes hepatocellular carcinoma progression by regulating AMP-activated protein kinase signaling in mice. *Hepatology* 2017;65:1628–44.
- 20 Guo R, Ren J. Alcohol and acetaldehyde in public health: from marvel to menace. *Int J Environ Res Public Health* 2010;7:1285–301.
- 21 Guo R, Xu X, Babcock SA, *et al.* Aldehyde dehydrogenase-2 plays a beneficial role in ameliorating chronic alcohol-induced hepatic steatosis and inflammation through regulation of autophagy. *J Hepatol* 2015;62:647–56.
- 22 Zhong W, Zhang W, Li Q, *et al.* Pharmacological activation of aldehyde dehydrogenase 2 by Alda-1 reverses alcohol-induced hepatic steatosis and cell death in mice. *J Hepatol* 2015;62:1375–81.
- 23 Dollé L, Gao B. Pharmacological chaperone therapies: Can aldehyde dehydrogenase activator make us healthier? *J Hepatol* 2015;62:1228–30.
- 24 Kwon HJ, Won YS, Park O, *et al.* Aldehyde dehydrogenase 2 deficiency ameliorates alcoholic fatty liver but worsens liver inflammation and fibrosis in mice. *Hepatology* 2014;60:146–57.
- 25 Feng D, Dai S, Liu F, *et al.* Cre-inducible human CD59 mediates rapid cell ablation after intermedilysin administration. *J Clin Invest* 2016;126:2321–33.
- 26 Takeda K, Hayakawa Y, Van Kaer L, *et al.* Critical contribution of liver natural killer T cells to a murine model of hepatitis. *Proc Natl Acad Sci U S A* 2000;97:5498–503.
- 27 Jamal M, Ameno K, Tanaka N, *et al.* Ethanol and Acetaldehyde After Intraperitoneal Administration to Aldh2-Knockout Mice-Reflection in Blood and Brain Levels. *Neurochem Res* 2016;41:1029–34.
- 28 Isse T, Matsuno K, Oyama T, *et al.* Aldehyde dehydrogenase 2 gene targeting mouse lacking enzyme activity shows high acetaldehyde level in blood, brain, and liver after ethanol gavages. *Alcohol Clin Exp Res* 2005;29:1959–64.

- 29 MacIver NJ, Michalek RD, Rathmell JC. Metabolic regulation of T lymphocytes. *Annu Rev Immunol* 2013;31:259–83.
- 30 Cohen S, Danzaki K, MacIver NJ. Nutritional effects on T-cell immunometabolism. *Eur J Immunol* 2017;47:225–35.
- 31 Fox CJ, Hammerman PS, Thompson CB. Fuel feeds function: energy metabolism and the T-cell response. *Nat Rev Immunol* 2005;5:844–52.
- 32 Chen YC, Peng GS, Tsao TP, et al. Pharmacokinetic and pharmacodynamic basis for overcoming acetaldehyde-induced adverse reaction in Asian alcoholics, heterozygous for the variant ALDH2*2 gene allele. *Pharmacogenet Genomics* 2009;19:588–99.
- 33 Yan Y, Yang JY, Mou YH, et al. Possible metabolic pathways of ethanol responsible for oxidative DNA damage in human peripheral lymphocytes. *Alcohol Clin Exp Res* 2011;35:1–9.
- 34 Chalhoub N, Baker SJ. PTEN and the PI3-kinase pathway in cancer. *Annu Rev Pathol* 2009;4:127–50.
- 35 Ivaska J, Nissinen L, Immonen N, et al. Integrin alpha 2 beta 1 promotes activation of protein phosphatase 2A and dephosphorylation of Akt and glycogen synthase kinase 3 beta. *Mol Cell Biol* 2002;22:1352–9.
- 36 Menk AV, Scharping NE, Moreci RS, et al. Early TCR Signaling Induces Rapid Aerobic Glycolysis Enabling Distinct Acute T Cell Effector Functions. *Cell Rep* 2018;22:1509–21.
- 37 Arumugham VB, Baldari CT. cAMP: a multifaceted modulator of immune synapse assembly and T cell activation. *J Leukoc Biol* 2017;101:1301–16.
- 38 Lu Y, Liu H, Bi Y, et al. Glucocorticoid receptor promotes the function of myeloid-derived suppressor cells by suppressing HIF1 α -dependent glycolysis. *Cell Mol Immunol* 2017.
- 39 Buentke E, Nordström A, Lin H, et al. Glucocorticoid-induced cell death is mediated through reduced glucose metabolism in lymphoid leukemia cells. *Blood Cancer J* 2011;1:e31.
- 40 Tabakoff B, Jafee RC, Ritzmann RF. Corticosterone concentrations in mice during ethanol drinking and withdrawal. *J Pharm Pharmacol* 1978;30:371–4.
- 41 Kwon HJ, Won YS, Park O, et al. Opposing effects of prednisolone treatment on T/NKT cell- and hepatotoxin-mediated hepatitis in mice. *Hepatology* 2014;59:1094–106.
- 42 Roy A, Mittal N, Zhang H, et al. Modulation of cellular expression of glucocorticoid receptor and glucocorticoid response element-DNA binding in rat brain during alcohol drinking and withdrawal. *J Pharmacol Exp Ther* 2002;301:774–84.
- 43 Hemmings BA, Restuccia DF. PI3K-PKB/Akt pathway. *Cold Spring Harb Perspect Biol* 2012;4:a011189.
- 44 Phan AT, Goldrath AW, Glass CK. Metabolic and Epigenetic Coordination of T Cell and Macrophage Immunity. *Immunity* 2017;46:714–29.
- 45 Shukla SD, Velazquez J, French SW, et al. Emerging role of epigenetics in the actions of alcohol. *Alcohol Clin Exp Res* 2008;32:1525–34.
- 46 Cobb CF, Van Thiel DH. Mechanism of ethanol-induced adrenal stimulation. *Alcohol Clin Exp Res* 1982;6:202–6.
- 47 Cobb CF, Van Thiel DH, Gavaler JS, et al. Effects of ethanol and acetaldehyde on the rat adrenal. *Metabolism* 1981;30:537–43.
- 48 Escrig MA, Pardo M, Aragon CM, et al. Anxiogenic and stress-inducing effects of peripherally administered acetaldehyde in mice: similarities with the disulfiram-ethanol reaction. *Pharmacol Biochem Behav* 2012;100:404–12.
- 49 Kinoshita H, Jessop DS, Finn DP, et al. Acetaldehyde, a metabolite of ethanol, activates the hypothalamic-pituitary-adrenal axis in the rat. *Alcohol Alcohol* 2001;36:59–64.
- 50 Cannizzaro C, La Barbera M, Plescia F, et al. Ethanol modulates corticotropin releasing hormone release from the rat hypothalamus: does acetaldehyde play a role? *Alcohol Clin Exp Res* 2010;34:588–93.
- 51 Liberman AC, Budziński ML, Sokn C, et al. Regulatory and Mechanistic Actions of Glucocorticoids on T and Inflammatory Cells. *Front Endocrinol* 2018;9:235.
- 52 Chang JS, Hsiao JR, Chen CH. ALDH2 polymorphism and alcohol-related cancers in Asians: a public health perspective. *J Biomed Sci* 2017;24:19.