



Vascular tumors of the mediastinum

Kristen Paral¹, Thomas Krausz²

¹Section of Dermatopathology, Consolidated Pathology Consultants, Libertyville, IL, USA; ²Department of Pathology, University of Chicago, Chicago, IL, USA

Contributions: (I) Conception and design: All authors; (II) Administrative support: All authors; (III) Provision of study materials or patients: None; (IV) Collection and assembly of data: None; (V) Data analysis and interpretation: None; (VI) Manuscript writing: All authors; (VII) Final approval of manuscript: All authors.

Correspondence to: Thomas Krausz, MD, FRCPath. Professor of Pathology, Vice Chair, Director of Anatomic and Surgical Pathology, University of Chicago, 5841 South Maryland Avenue, MC6101, Room S632, Chicago, IL 60637, USA. Email: thomas.krausz@uchospitals.edu.

Abstract: Vascular tumors represent only a sliver of all tumors affecting the mediastinum, but they pose diagnostic challenges due to significant overlap among entities, ever-evolving classification schemes, and the exquisite rarity of some of the entities not only in the mediastinum but in pathology practice as a whole. Most of the vascular tumors are better known to the practice of soft tissue pathology, from which some of the knowledge of clinical behavior can be extrapolated. For example, the stratification of epithelioid hemangioendothelioma (EHE) into two biologically separate categories has effectively translated from the somatic soft tissues to the thorax. For other entities, the effective validation of soft tissue parameters is hindered by the small numbers of reported mediastinal cases. Many of the treatment modalities have also transferred over, with the key differences resting on the difficulty in achieving complete surgical resection for mediastinal tumors as opposed to those in the somatic soft tissues. Accordingly, systemic drug therapies have emerged as attractive options for some of the mediastinal vascular tumors, such as kaposiform hemangioendothelioma (KHE) and Kaposi sarcoma (KS). The categories presented herein mirror the classification scheme set forth by the 5th Edition WHO Classification of Soft Tissue and Bone Tumors. This review focuses on the biologically aggressive vascular neoplasms while limiting discussion of the benign entities to relevant comparisons in the differential diagnoses. While distinguishing among the benign entities has academic importance, in practice, the stakes are far higher for diagnosing the biologically aggressive tumors given their marked heterogeneity in clinical outcomes. Practical advice for problem areas in pathology will be reviewed alongside tumor pathobiology, including the latest in molecular diagnostics.

Keywords: Angiosarcoma; vasoformative; hemangioendothelioma; Kaposi

Received: 19 June 2020; Accepted: 16 July 2020; Published: 30 September 2020.

doi: 10.21037/med-20-40

View this article at: <http://dx.doi.org/10.21037/med-20-40>

Intermediate (locally aggressive)

Kaposiform hemangioendothelioma (KHE)

Clinical features

Originally described as a deep-seated tumor of infants, as reflected in its archaic name *kaposiform infantile hemangioendothelioma*, this lesion is now known to affect a range of ages and a variety of sites (1). In a cohort of 146 patients with KHE, the vast majority were diagnosed

within their first year of life, and half of the cases involved the extremities (2). Adults tend to suffer worse outcomes (3). The mediastinum, including the heart, is a known site of origin (4-7). Morbidity stems from complications of: (I) locally aggressive tumor growth, resulting in compression of vital structures, and/or (II) platelet trapping within the vascular channels of the tumor, leading to consumptive coagulopathy, a condition known as the eponymous Kasabach-Merritt phenomenon. During the

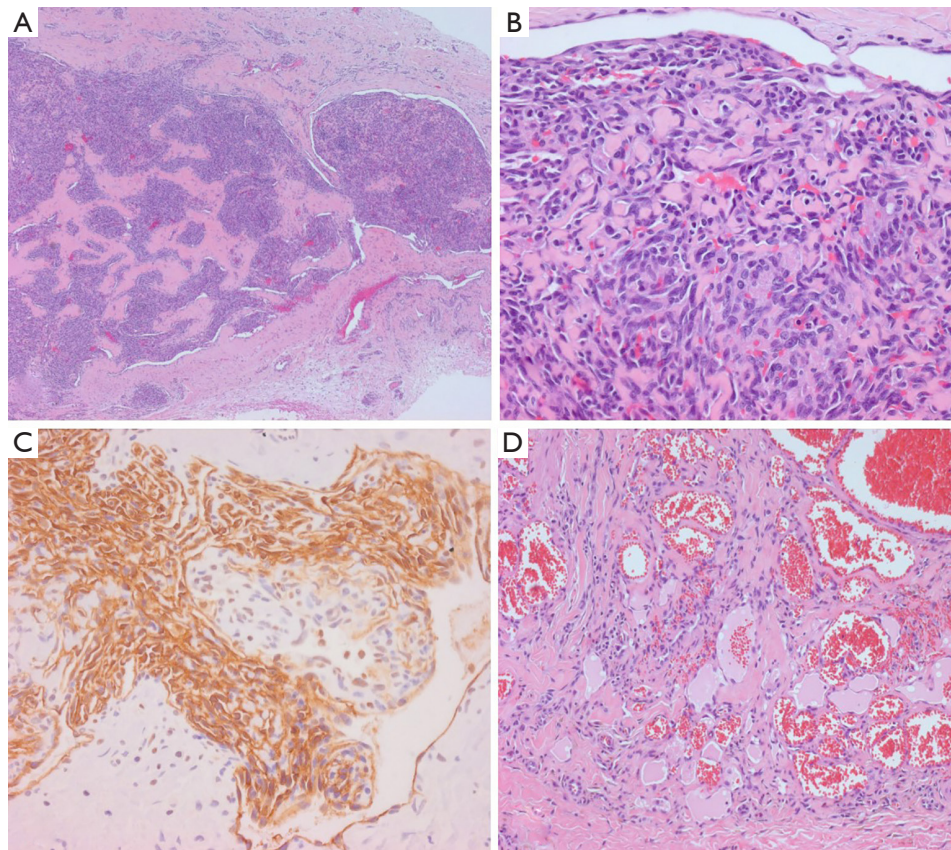


Figure 1 Kaposiform hemangioendothelioma (KHE). (A) The tumor exhibits a lobular yet infiltrative silhouette [hematoxylin and eosin stain (H&E), $\times 5$]. (B) Slit-like vascular spaces are admixed with spindled and rounded cells (H&E stain, $\times 20$). (C) In addition to endothelial markers, lymphatic markers also highlight a portion of the lesional cells (IHC D2-40, $\times 20$). (D) A preceding lymphovascular malformation was observed years before the KHE diagnosis in this patient (H&E stain, $\times 10$).

active phase of the Kasabach-Merritt phenomenon, the size of the tumor mass increases as clotting progresses, further compressing vital structures. Consensus guidelines for treatment are emerging (8), with increasing evidence for the efficacy of mTOR inhibitor sirolimus (6,9).

Pathologic features

Low-power examination reveals an infiltrative yet lobular proliferation of cellular nodules composed of well formed capillaries admixed with short fascicles of spindle cells with slit-like vascular channels (*Figure 1*). Crescentic lymphatic channels reside at the periphery of nodules. Extravasated RBCs, intraluminal thrombi, and hemosiderin deposits can also be observed (9,10).

Ancillary studies

Focal expression of lymphatic markers (D2-40, PROX1, and

VEGFR3), and more extensively, vascular markers (CD31, CD34, ERG), is observed in the spindled endothelial cells of KHE (*Figure 1C*) (9). There is no expression of human herpesvirus 8 (HHV8). Based on limited molecular data, there is some evidence of a translocation between chromosomes 13 and 16, while other cases exhibit an activating mutation of *GNAI4* (a paralogue of *GNAQ*) (9).

Differential diagnosis

Morphologic resemblance to Kaposi sarcoma (KS) is obvious from the name of the tumor. However, the consistently lobular growth pattern of KHE is not a feature of KS, and HHV8 expression is absent in KHE. Infantile (juvenile) hemangioma may enter the differential diagnosis owing to a lobulated tumor border together with densely packed vascular nodules (*Figure 2*), but these tumors spontaneously involute, are not associated with the

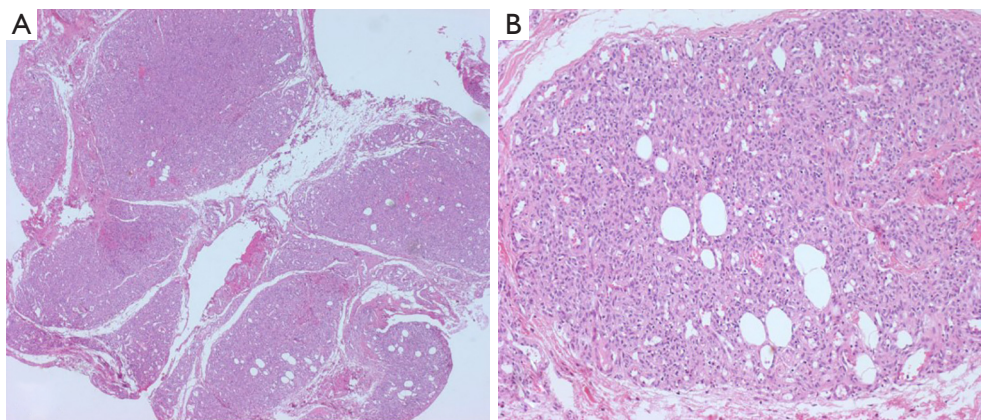


Figure 2 Infantile (juvenile) hemangioma, characterized by a lobulated tumor border and densely packed vascular nodules. These tumors express GLUT-1 by immunohistochemistry. (A, H&E stain, $\times 5$; B, H&E stain, $\times 10$).

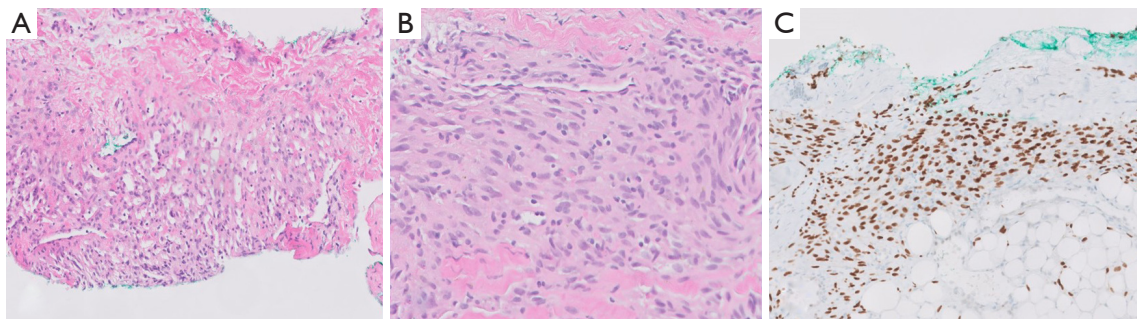


Figure 3 Kaposiform lymphangiomatosis, from a 12-year-old girl with multifocal involvement (neck, thorax/mediastinum, abdomen, pelvis, spine, and femur). The patient continues to experience thrombocytopenia, but her disease is overall well controlled with sirolimus therapy. (A) Poorly defined collections of tumor cells compared to the cellular nodules of KHE (H&E stain, $\times 20$). (B) Slit-like vascular spaces and spindled cells resemble KHE (H&E stain, $\times 40$). (C) Immunohistochemistry for PROX1, a lymphatic marker, highlights the tumor cells (IHC PROX1, $\times 40$). KHE, kaposiform hemangioendothelioma.

Kasabach-Merritt phenomenon, and express GLUT-1 by immunohistochemistry (11).

Kaposiform lymphangiomatosis (KLA) is a recently introduced term for a lymphatic anomaly which overlaps substantially with KHE and may in fact represent a clinicopathologic variant of KHE rather than a disease *sui generis*. To further confuse the picture, the terms “generalized lymphatic anomaly and Gorham-Stout disease” have entered into this mix of lymphatic anomalies (12,13). For convenience, one can regard these as clinical variants of histologically similar lymphatic pathologies. A few subtle differences can be identified between KHE and KLA: (I) multifocality within the mediastinum and lung is more characteristic of KLA, (II) histologically, KLA exhibits more dispersed and poorly defined collections of

tumor cells (Figure 3), and (III) both KLA and KHE have increased activity in RAS/PI3K/mTOR signaling pathways, but somatic activating NRAS variants have been found in KLA but not KHE (14).

Intermediate (rarely metastasizing)

Retiform hemangioendothelioma

Cases of retiform hemangioendothelioma involving mediastinal structures are few and far between; therefore, only a brief description follows. This tumor most commonly involves superficial tissue planes. A mediastinal case presented as pleural nodules in a patient with dry cough, dyspnea, and pleural effusion (15).

Histologic examination discloses arborizing vascular

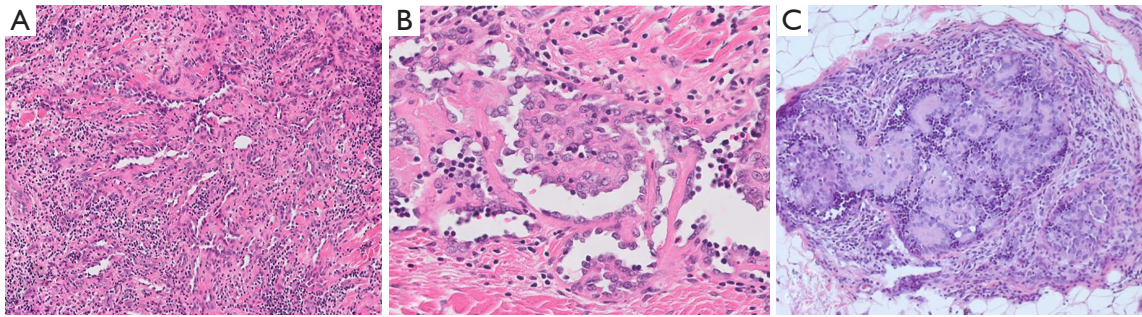


Figure 4 Retiform hemangioendothelioma. (A) Ill-defined, arborizing vascular channels (H&E stain, $\times 20$). (B) Hobnail endothelial cells line the channels. Note the intravascular papillae and the background lymphocytes (H&E stain, $\times 40$). (C) For comparison: papillary intralymphatic angioendothelioma (Dabska tumor) showing intravascular papillae with hyaline cores (H&E stain, $\times 10$).

channels recapitulating the structure of the rete testis (Figure 4). The vascular channels are lined by hobnail endothelial cells. Numerous lymphocytes permeate the channels and the stroma. Intravascular papillae with hyaline cores may be seen, creating overlap with papillary intralymphatic angioendothelioma (Dabska tumor) (Figure 4C). Endothelial cells express vascular markers and lymphatic marker PROX1, but they only rarely express D2-40 (16).

Papillary intralymphatic angioendothelioma (Dabska tumor)

Reports of this tumor in the mediastinum were not found, but since cases have been reported in intra-abdominal sites and even within the bone (17), the thorax could theoretically be involved. The key to diagnosing this tumor lies in recognizing the distinctive hobnail, “match-stick”-like appearance of the endothelial cells lining the lymphatic channels and covering the papillary hyaline cores. Immunohistochemistry shows immunoreactivity for the lymphatic markers (D2-40, PROX1, and VEGFR3). There is significant overlap with retiform hemangioendothelioma (discussed above).

Composite hemangioendothelioma

By definition, this tumor exhibits at least two morphologically distinct vascular components (18). A lone report describes mediastinal involvement (19). Akin to retiform hemangioendothelioma, this tumor most commonly involves superficial tissue planes. There is an association with Maffucci syndrome and Kasabach-Merritt phenomenon (20), though the latter is most closely linked to KHE. These tumors usually behave in a low-grade manner, with potential for local recurrence but minimal potential for distant metastasis and death (20,21). While

the combination of retiform hemangioendothelioma and epithelioid hemangioendothelioma (EHE) is most common, many other benign and malignant components can be observed, ranging from hemangioma to angiosarcoma-like areas (18). Rarely, there are areas with a neuroendocrine appearance which show synaptophysin immunoreactivity; this may portend a worse prognosis. Molecular studies have uncovered novel *PTBP1-MAML2* and *EPC1-PHC2* gene fusions in two cases (22). Despite the rarity of these neuroendocrine cases, the 5th Edition WHO Classification formally recognizes them as a subtype of composite hemangioendothelioma (18).

Kaposi sarcoma (KS)

Clinical features

Typically a tumor of mucocutaneous and visceral sites, KS can affect any body site, the mediastinum being no exception. Lymph nodes are frequently involved (23). KS manifests as one of several clinical subtypes: (I) classic (indolent), (II) endemic (African), (III) AIDS-associated, and (IV) iatrogenic (18). Cardiac KS has been found across all clinical subdivisions, based on autopsy findings between the 1950s through the 1980s. The epicardium seems to be more frequently affected than the myocardium or endocardium (23). KS can also involve the thoracic duct and adjacent mediastinal structures, manifesting as chylothorax. The thoracic duct can serve as either a site of origin or a target of metastasis for KS (23,24). Doxorubicin is frequently the first-line therapy for systemic or extensive KS, but newer targeted therapies are showing promise in clinical trials (25).

Pathologic features

Characteristic features include relatively monotonous-

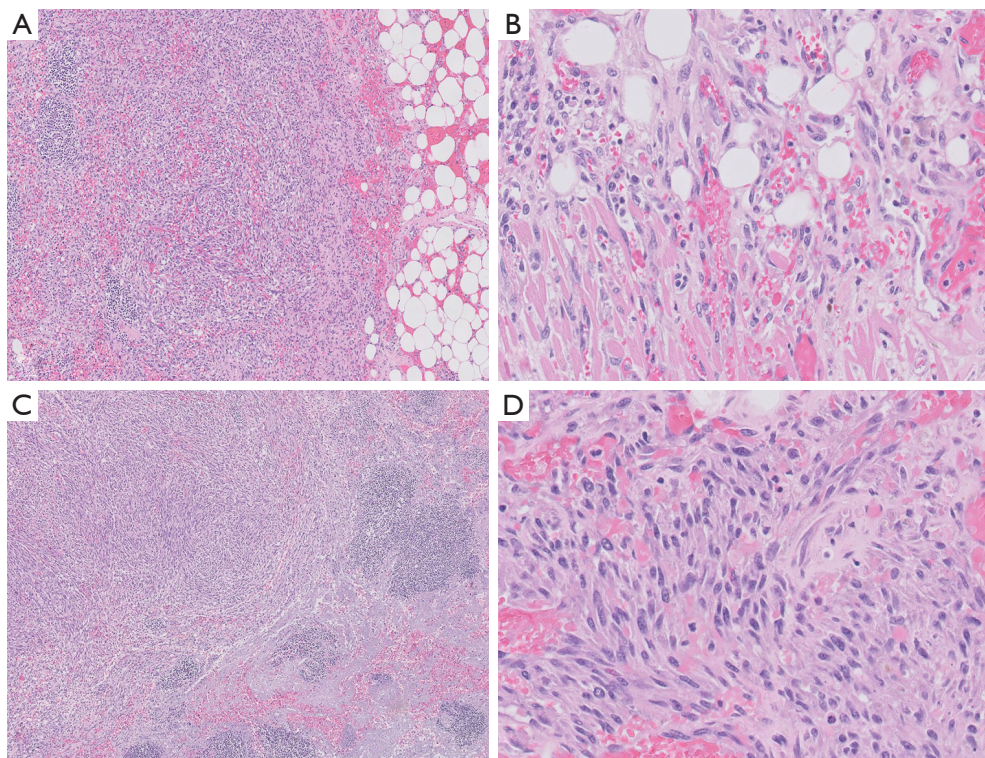


Figure 5 Kaposi sarcoma. (A) Kaposi sarcoma infiltrating the subepicardial adipose tissue in a 40-year-old HIV-positive heart transplant patient (H&E stain, $\times 5$). (B) Permeation of cardiac muscle fibers (H&E stain, $\times 40$). (C,D) Mediastinal lymph node involvement in the same patient (C, H&E stain, $\times 5$; D, H&E stain, $\times 40$).

appearing spindle cells, increased numbers of slit-like vascular channels, hemorrhage, hemosiderin deposition, and hyaline globules (*Figure 5*). If identified, the so-called “promontory sign” is a helpful feature, consisting of small vessels protruding into the lumen of a larger vessel. Chronic inflammation, including plasma cells, is a secondary feature. Many of the morphologic variants of KS presented in the cutaneous literature are not relevant to the mediastinum; however, brief mention will be made of the hemangioma-like, lymphangioma-like, and anaplastic variants (25,26). The hemangioma-like and lymphangioma-like patterns exhibit typical KS sarcoma in at least part of the lesion. Anaplastic KS is a pauci-vascular spindle cell proliferation with a greater degree of nuclear atypia, increased mitotic activity (5 to 20 mitoses per 10 high-power fields), and occasional necrosis. These features have been associated with aggressive behavior (27,28).

Ancillary studies

Tumor cells express vascular and lymphatic markers (29). Since HHV8 underlies KS tumorigenesis, HHV8

immunohistochemistry serves as the diagnostic key (*Figure 6*). Expression of the HHV8 virus produces the latency-associated nuclear antigen (LANA), which binds to retinoblastoma protein and p53, affecting cell proliferation and apoptosis (30). Comparative genomic hybridization studies have demonstrated 11q13 involvement, including *FGF3/4* target genes. *KRAS* and *TP53* aberrations have also been reported (18).

Differential diagnosis

Diagnosing lymphangioma/hemangioma-like KS requires a careful search to identify any areas of typical KS to trigger HHV8 immunohistochemistry. Distinction of anaplastic KS from angiosarcoma can be problematic, especially in spindle cell examples. The differential diagnosis with KHE was discussed above.

Pseudomyogenic hemangioendothelioma

Clinical features

An example of this relatively recently characterized tumor

has been reported to involve the mediastinum; specifically, thoracic vertebrae with extension into the pleural cavity (31). A far more common presentation is a young man with multifocal involvement of tissue planes of the lower limb (cutaneous/subcutaneous > intramuscular > bone), or less commonly the trunk, upper limbs, or head and neck (18). Biological behavior is considered intermediate owing to frequent recurrences but low rates of distant metastasis (32).

Pathologic features

Microscopic examination reveals loose fascicles and sheets of plump spindled to polygonal cells with deep eosinophilic cytoplasm, resembling rhabdomyoblasts (Figure 7). Neutrophils are often present (Figure 7C). Nuclear pleomorphism tends to be limited, and mitotic activity is low (1 per 10 HPF on average). Vascular invasion

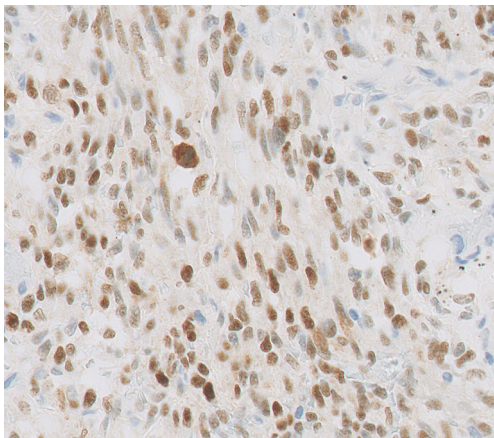


Figure 6 Kaposi sarcoma. HHV8 immunohistochemistry reveals strong nuclear reactivity (IHC HHV8, $\times 40$). HHV8, human herpesvirus 8.

and necrosis are infrequent features (32).

Ancillary studies

Immunohistochemistry of the tumor reveals partial expression of both epithelial and vascular markers, characterized by immunoreactivity for AE1/AE3, ERG, and FLI1, but only variable Cam5.2 and CD31, and no expression of CD34 or MNF116 (32,33). The tumor is designated as *pseudomyogenic* because it lacks expression of myogenic marker desmin (and only variably expresses SMA) despite the myogenic/rhabdoid appearances. Strong and diffuse expression of FOSB by immunohistochemistry is effective in distinguishing pseudomyogenic hemangioendothelioma from morphologic simulants. FOSB immunoreactivity reflects a *SERPINE1-FOSB* (or *ACTB-FOSB*) gene fusion that has been identified as a consistent genetic alteration in these tumors (22,34,35). The fusion type has no bearing on clinical behavior, but the *ACTB-FOSB* variant has a greater tendency to present as a solitary lesion (36).

Differential diagnosis

The predominantly myoid-appearing spindle cell morphology, expression of ERG/FLI1, lack of EMA, CD34, and PAN-K expression, and intact INI-1 sets this tumor apart from epithelioid sarcoma, with which it is closely intertwined due to its original designation as “epithelioid sarcoma-like hemangioendothelioma” (32). Other spindle cell tumors that may enter the differential, such as sarcomatoid carcinoma and rhabdomyosarcoma, exhibit overt features of malignancy. Vascular tumors would only be considered upon observing FLI1/ERG immunoreactivity, as vasoformation is lacking by H&E examination. However,

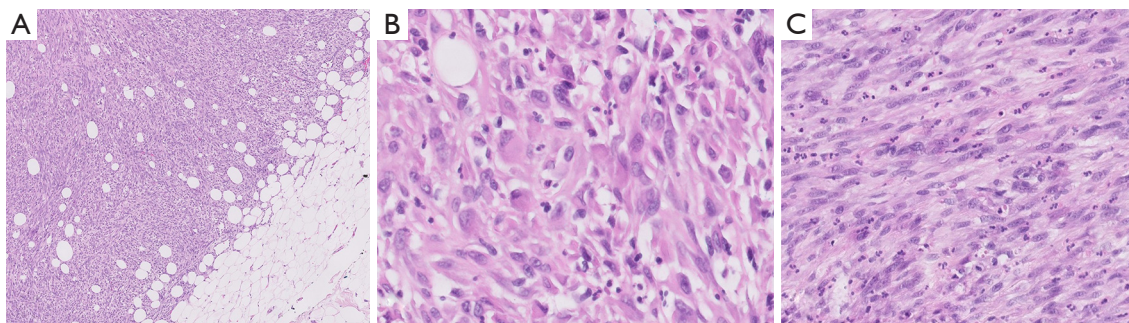


Figure 7 Pseudomyogenic hemangioendothelioma. (A) The tumor exhibits an infiltrative interface with the native adipose tissue (H&E stain, $\times 5$). (B) Rhabdomyoblast-like cells with eccentric nuclei and abundant, dense, eosinophilic to amphophilic cytoplasm, mimicking myogenic tumors (H&E stain, $\times 40$). (C) Neutrophils are scattered throughout the tumor in some cases (H&E stain, $\times 20$).

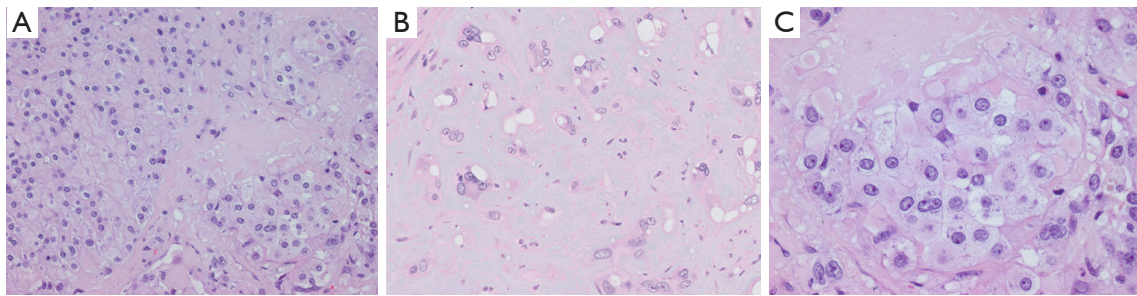


Figure 8 Classic epithelioid hemangioendothelioma. (A) Tumor cells are epithelioid with round nuclei, small nucleoli, and moderate amphophilic cytoplasm (H&E stain, $\times 20$). (B) Myxochondroid (basophilic) matrix and tumor cells with intracytoplasmic vacuoles imparting a signet-like appearance (“blister cells”) (H&E stain, $\times 40$). (C) Hyaline (eosinophilic) matrix is seen at the periphery of this collection of epithelioid cells (H&E stain, $\times 40$).

no other vascular tumor exhibits the unique constellation of morphologic and immunophenotypic traits of pseudomyogenic hemangioendothelioma.

Malignant

Epithelioid hemangioendothelioma (EHE)

Clinical features

EHE is a malignant vascular tumor composed of epithelioid endothelial cells in a myxohyaline matrix. Most commonly, it occurs in the somatic soft tissues, lung, and liver, but the tumor can arise from any body site. Adults are affected far more often than children. Superficial lesions are usually solitary, while visceral and bone tumors are frequently multiple, representing local metastatic spread (18). Mediastinal cases of EHE have earned a special place in the literature (37,38). Frequently, the tumor involves or originates from the superior vena cava or the innominate vein (39). For mediastinal cases, the size of the tumor is recorded in place of TNM staging (18). Several factors come into play for prognosticating these tumors: (I) anatomic site (lung and bone tumors behave worse than soft tissue ones), (II) select gross and microscopic tumor characteristics (tumor size and mitotic activity), and (III) molecular fusion type (discussed below). Pleural involvement portends an aggressive clinical course, with only 22% of patients surviving to 5 years, compared to a >70% overall survival rate (40).

Pathologic features

Angiocentric tumors expand the vessel wall, obliterate the lumen, and spread centrifugally into surrounding tissues (18). An infiltrative border is characteristic. The

tumor consists of epithelioid (and sometimes fusiform) cells arranged as cords or nests within a hyaline (eosinophilic) to myxochondroid (basophilic) matrix (*Figure 8*). Primitive vasoformation manifests as intracytoplasmic vacuoles, which occasionally contain erythrocytes. Cells have round nuclei, inconspicuous nucleoli, intracytoplasmic vacuoles, and moderate amounts of eosinophilic cytoplasm. Cytologic atypia, mitotic activity, and necrosis are unusual (*Figure 9*), and their presence has been correlated with more aggressive behavior by some authors (40). However, Deyrup *et al.* have reported that cytologic atypia and tumor necrosis were *not* significant, but that >3 mitotic figures/50 high power fields and tumor size >3.0 cm correlated with unfavorable clinical outcomes (41).

Ancillary studies

Tumor cells express vascular markers (*Figure 10*) and occasionally epithelial markers; in fact, 29% of EHE show keratin expression (37). Molecular analysis reveals a *CAMTA1-WWTR1* gene fusion in most cases (~90%), while a subset exhibits *YAP1-TFE3* gene fusions (42). Alternative *WWTR1* partners, *MAML2* and *ACTL6A*, have been found to have a predilection for cardiac involvement (43). The *YAP1-TFE3* subset bears several noteworthy differences relative to the *CAMTA1-WWTR1* group: (I) more favorable outcomes (the 5-year survival being 86%, versus 59% for cases with *CAMTA1-WWTR1* fusions) (40), (II) occurrence in a younger age group (44), (III) more solid growth, greater vasoformation, and brightly eosinophilic cytoplasm (45). These cases also exhibit nuclear TFE3 immunolabeling (*Figure 10C*) (44), albeit with imperfect specificity. *CAMTA1* immunohistochemistry (*Figure 11*) is a useful surrogate for molecular testing (46).

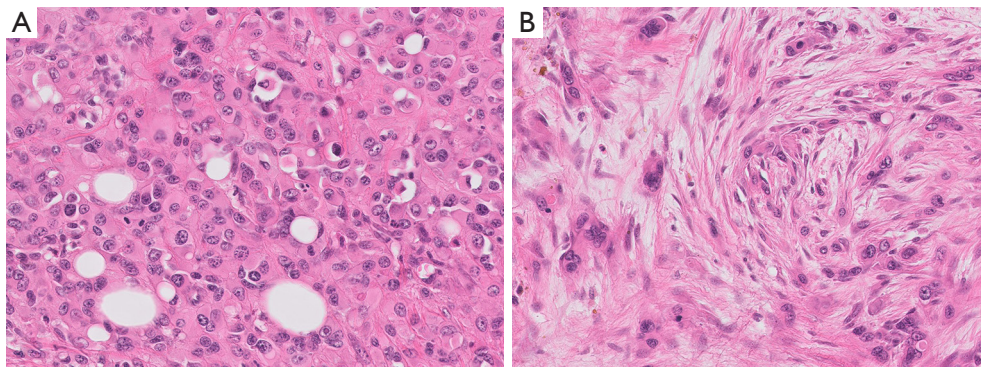


Figure 9 Epithelioid hemangioendothelioma with atypical features. (A) Infiltration of fat at the tumor border in a case with some cytologic pleomorphism (H&E stain, $\times 20$). (B) Focal spindling and notable nuclear pleomorphism (H&E stain, $\times 40$).

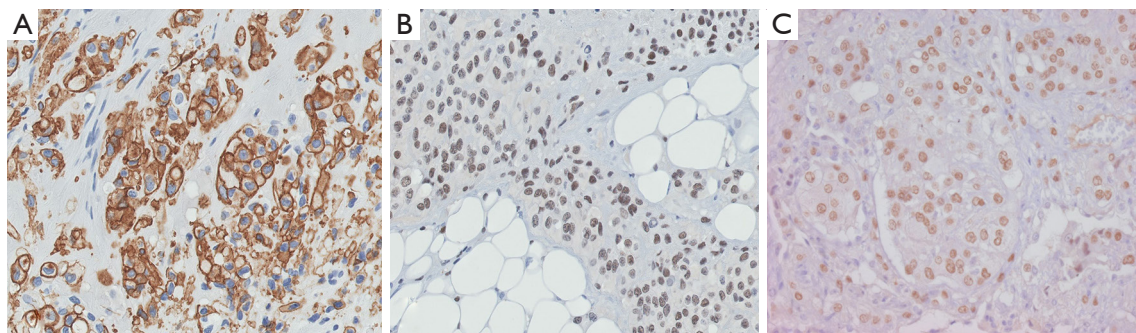


Figure 10 Epithelioid hemangioendothelioma immunohistochemistry. (A) CD34 expression of tumor cells (CD31, ERG were also positive) (IHC CD34, $\times 40$). (B) FLI1, another vascular marker, highlights the nuclei of tumor cells (IHC FLI1, $\times 20$). (C) TFE3 immunohistochemistry in a case with a *YAP1-TFE3* gene fusion (IHC TFE3, $\times 20$).

Differential diagnosis

In the mediastinum, where serous membranes abound, mesothelioma is a legitimate contender for the diagnosis of any malignant epithelioid neoplasm. The combination of any vasoformation, strong expression of vimentin (Figure 12), minimal cytokeratin expression, and expression of two or more endothelial markers clinches the diagnosis of EHE over mesothelioma (47). WT1 immunohistochemistry shows nuclear labeling of mesothelioma, while cytoplasmic labeling is seen in vascular tumors. Cytologically atypical cases of EHE are distinguished from epithelioid angiosarcoma based on the presence of distinctive extracellular matrix, intracytoplasmic vacuoles, and nuclear cytoplasmic inclusions (37). Clear-cut vasoformation with hemorrhage and formation of blood lakes should steer away from the diagnosis of EHE. Overall, angiosarcoma exhibits greater pleomorphism, mitotic activity, and frequent

necrosis. On limited biopsy samples, when the distinction is difficult, molecular studies can provide a solution. However, some literature indicates that all epithelioid vascular tumors of the pleura should be considered highly malignant regardless of EHE-like histologic features (48). This opinion is consistent with the results of recent studies showing poor outcomes in cases with pleural involvement (mentioned above). For cases arising from veins, consideration may be given to intravascular epithelioid hemangioma, but these tumors exhibit lobular/multilobular growth rather than the infiltrative cords and strands of tumor cells seen in EHE (49).

Angiosarcoma

Clinical features

Angiosarcomas are biologically aggressive malignancies with

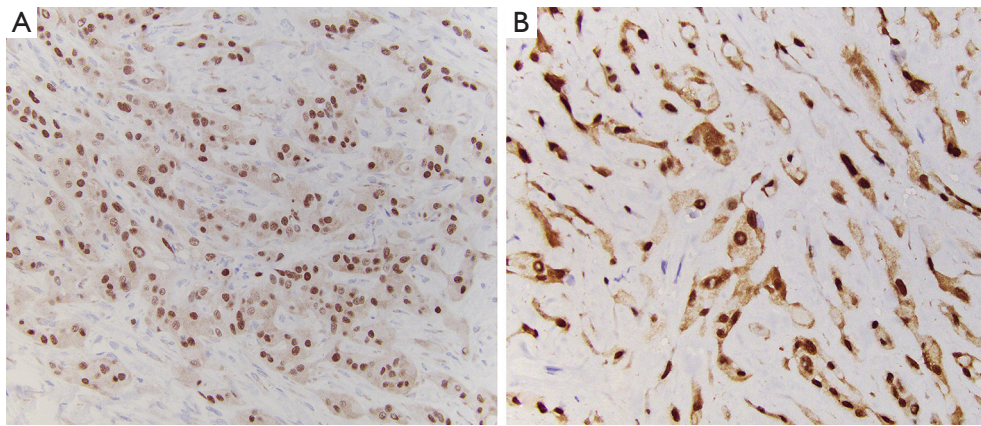


Figure 11 CAMTA1 immunohistochemistry. Epithelioid hemangioendothelioma with the *WWTR1-CAMTA1* fusion exhibits strong, diffuse nuclear expression of CAMTA1, which is a surrogate for this fusion. Images courtesy of C. D. M. Fletcher, Brigham and Women's Hospital. (A, IHC CAMTA1; $\times 20$; B, IHC CAMTA1; $\times 40$).

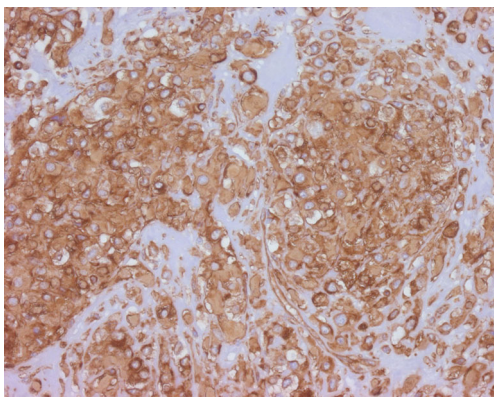


Figure 12 Epithelioid hemangioendothelioma, vimentin expression. The strong and diffuse expression of vimentin helps to distinguish EHE from carcinoma and mesothelioma (note that mesothelioma can have focal/moderate expression). IHC vimentin, $\times 20$. EHE, epithelioid hemangioendothelioma.

high rates of mortality. More than half of patients die within a year of diagnosis (45). Most cases arise in the skin, followed by the deep soft tissues, breast, bone, and viscera. The mediastinum is a frequent site of involvement in children, who are only very rarely affected by angiosarcoma (18). Within the mediastinum, the anterior compartment is most often involved (50). The heart, great vessels, esophagus, and the thymus have all been documented as sites of origin (50-53). Angiosarcomas can arise secondarily within other tumors of the mediastinum, some examples including primary germ cell tumors (54,55) and schwannomas (56). Tumors are treated by resection, with or without chemotherapy (50,51,57).

Some literature studies suggest a survival advantage for patients treated with the combination of surgery and radiation (58).

Pathologic features

Tumor morphology can span a broad spectrum, ranging from strikingly low-grade appearances simulating hemangiomas to high-grade undifferentiated sarcomas (Figure 13). Vasoformation manifests as large cavernous spaces, irregular anastomosing channels, capillary-like proliferations, and slit-like channels lined by hyperchromatic endothelial cells. Vasoformation can be obscured when neoplastic cells grow in sheet-like, solid patterns. In areas of solid growth, tumor cells can be spindled or epithelioid. Some cases are entirely epithelioid (so-called epithelioid angiosarcoma). Essentially all cases exhibit hemorrhage, hemosiderin deposition, and multilayering of endothelial cells. Minor features include papillary projections resembling endothelial hyperplasia, pleomorphic tumor giant cells, fibrous or myxoid tumor stroma, and dissection into fat or other structures (50). Necrosis is often present, and mitotic activity appears to correlate with the degree of tumor differentiation (50). Foamy cell angiosarcoma is an extraordinarily rare and unusual variant of angiosarcoma which presents major diagnostic challenges and requires ancillary studies for diagnosis (Figure 14) (59).

Ancillary studies

Angiosarcomas express both vascular and lymphatic markers (29). Expression of at least two vascular markers

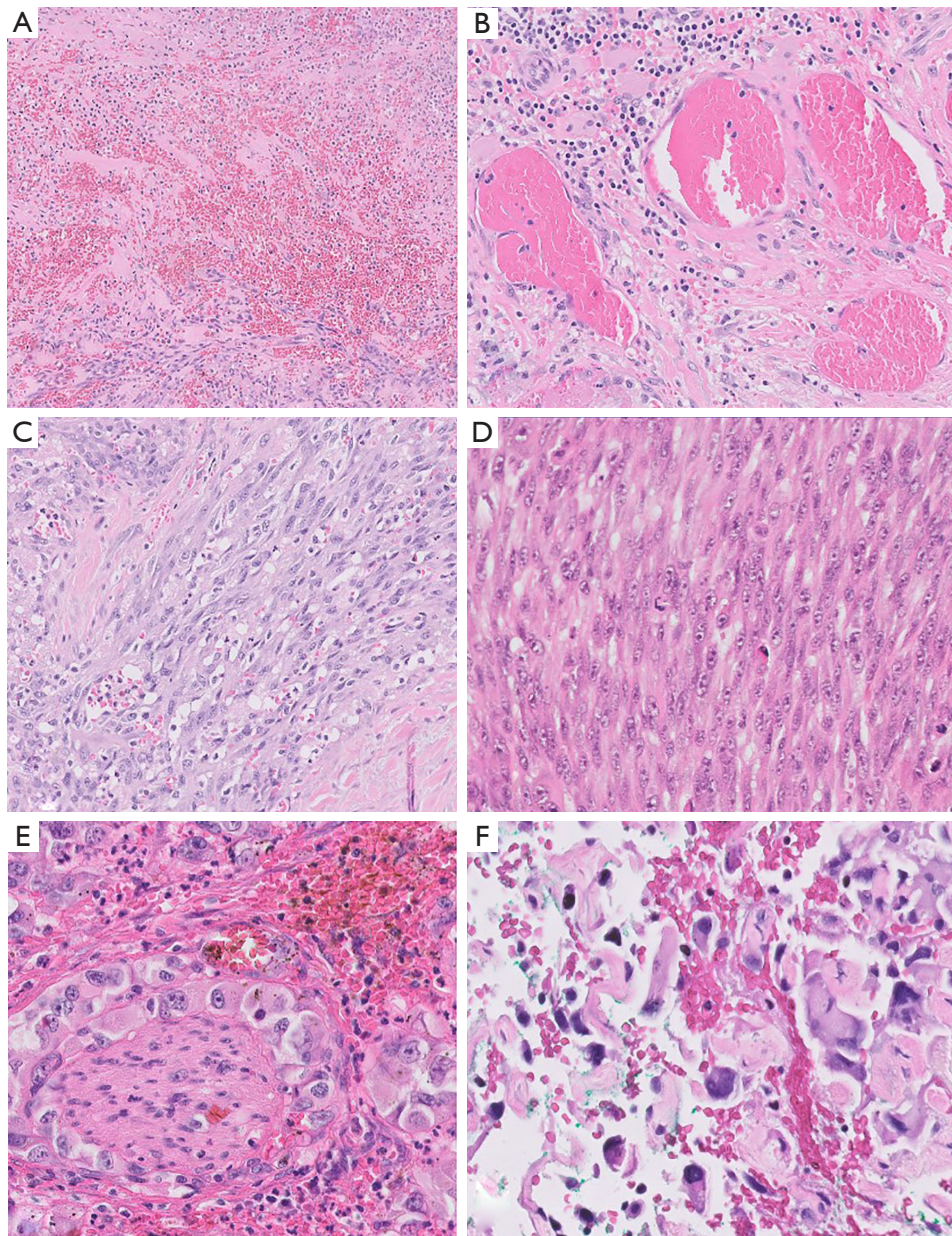


Figure 13 Angiosarcoma. (A) Typical hemorrhagic appearance (H&E stain, $\times 10$). (B) Ectatic, blood-filled channels mimicking hemangioma (H&E stain, $\times 20$). (C) Higher-grade appearance with subtle anastomosing vascular channels (H&E stain, $\times 20$). (D) Spindled phenotype, with solid growth and minimal vasoformation (H&E stain, $\times 20$). (E) Epithelioid phenotype (epithelioid angiosarcoma), with hemorrhage and perineural invasion (H&E stain, $\times 20$). (F) Pleomorphic cytology, with hemorrhage (H&E stain, $\times 40$).

is recommended to underpin the diagnosis (*Figure 14*). Epithelioid cases exhibit some cytokeratin expression in about a quarter of cases, most commonly pankeratin, CK7, CAM5.2, or CK18 (37). MYC protein expression is most consistently observed among radiation-induced angiosarcomas of the breast, but there is limited utility of

this marker at other anatomic sites (60). A positive result is more diagnostically useful than a negative one. MYC protein overexpression reflects *MYC* gene amplification, a consistent finding among post-irradiation angiosarcomas (less commonly *FLT4* amplification, *PTPBR* mutation, and *PLCH1* mutation). Primary angiosarcomas tend to

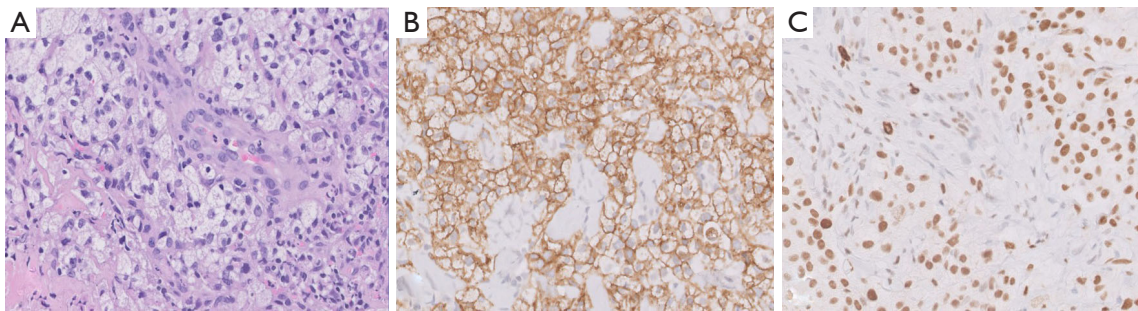


Figure 14 A rare variant of angiosarcoma with immunohistochemistry. (A) The foamy-cell appearance of this unusual angiosarcoma engenders a broad differential diagnosis and therefore requires immunohistochemistry (H&E stain, $\times 40$). (B) CD34 immunohistochemistry shows a membranous pattern of expression (CD31 was also positive) (IHC CD34, $\times 40$). (C) ERG immunohistochemistry shows diffuse nuclear expression (IHC ERG, $\times 40$).

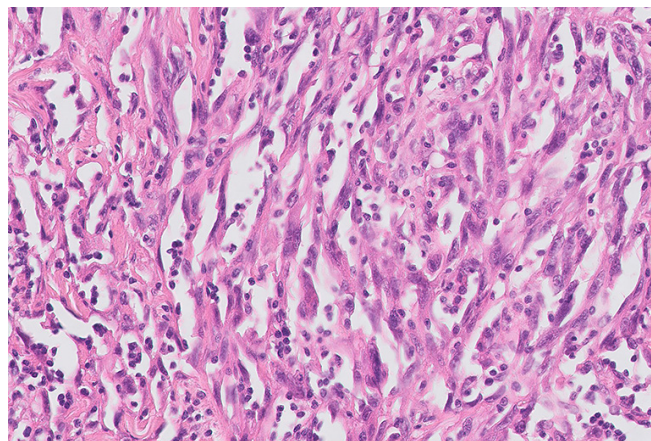


Figure 15 Spindle cell melanoma with pseudovascular spaces mimicking angiosarcoma (H&E stain, $\times 40$).

exhibit complex karyotypes with occasional *KDR* or *CIC* mutations (22).

Differential diagnosis

Cases with epithelioid cytology mimic carcinoma, an issue that can be further confounded by cytokeratin expression. Moreover, an epithelioid malignancy in the mediastinum is statistically far more likely to represent carcinoma than any mesenchymal neoplasm (61). Therefore, any evidence of vasof ormation or a hemorrhagic background should trigger a panel of vascular markers. Distinction from mesothelioma would follow the same approach as discussed above for EHE. One potential pitfall is that D2-40 expression is seen in both mesothelioma and angiosarcoma. Spindled morphologic variants overlap with other sarcomas, but the typical immunohistochemical workup for sarcoma includes at least one vascular marker, which would indicate

a vascular lineage. Spindle cell melanoma can exhibit pseudovascular spaces mimicking angiosarcoma (Figure 15), again requiring immunohistochemistry to nail down tumor origin. As mentioned above, some cases of EHE can pose a diagnostic dilemma, but the specialized matrix is the key to EHE. Molecular studies can be employed as an objective means to discriminate between the two.

Anastomosing hemangioma, which also occasionally occurs in the mediastinum, can simulate well-differentiated angiosarcoma (Figure 16) owing to its non-lobular, anastomosing growth pattern and mild nuclear atypia. Moreover, it may focally infiltrate into the surrounding soft tissue or viscera. However, anastomosing hemangioma lacks the diffusely infiltrative growth and other malignant features of angiosarcoma. Further diagnostic clues to anastomosing hemangioma include intralesional mature adipose tissue, small thrombi, and extramedullary hematopoiesis. The

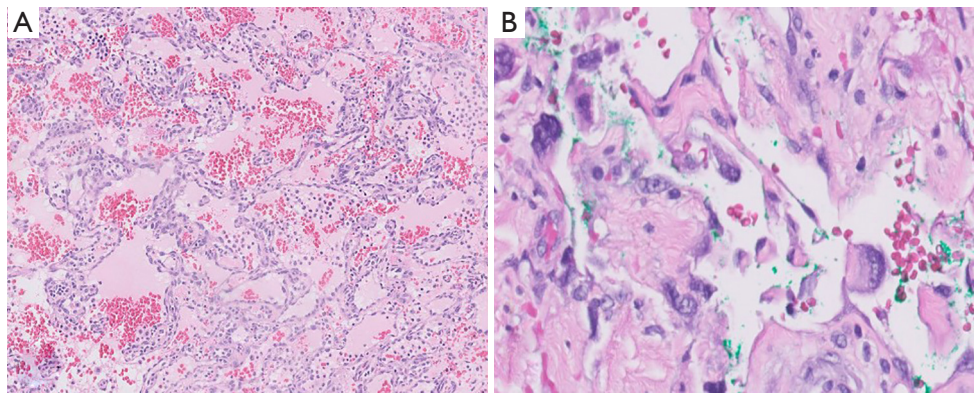


Figure 16 Angiosarcoma simulating anastomosing hemangioma. (A) The anastomosing channels in this angiosarcoma mimic the appearance of anastomosing hemangioma (H&E stain, $\times 10$). (B) The channels are lined by endothelial cells with a degree of atypia that exceeds what is acceptable for anastomosing hemangioma (H&E stain, $\times 40$).

finding of a *GNAQ* mutation would also support a diagnosis of anastomosing hemangioma (62,63).

Acknowledgments

Funding: None.

Footnote

Provenance and Peer Review: This article was commissioned by the Guest Editors (Saul Suster and David Suster) for the series “Mediastinal Sarcomas” published in *Mediastinum*. The article was sent for external peer review organized by the Guest Editors and the editorial office.

Conflicts of Interest: Both authors have completed the ICMJE uniform disclosure form (available at <http://dx.doi.org/10.21037/med-20-40>). The series “Mediastinal Sarcomas” was commissioned by the editorial office without any funding or sponsorship. The authors have no other conflicts of interest to declare.

Ethical Statement: The authors are accountable for all aspects of the work in ensuring that questions related to the accuracy or integrity of any part of the work are appropriately investigated and resolved.

Open Access Statement: This is an Open Access article distributed in accordance with the Creative Commons Attribution-NonCommercial-NoDerivs 4.0 International License (CC BY-NC-ND 4.0), which permits the non-

commercial replication and distribution of the article with the strict proviso that no changes or edits are made and the original work is properly cited (including links to both the formal publication through the relevant DOI and the license). See: <https://creativecommons.org/licenses/by-nc-nd/4.0/>.

References

1. Croteau SE, Gupta D. The clinical spectrum of kaposiform hemangioendothelioma and tufted angioma. *Semin Cutan Med Surg* 2016;35:147-52.
2. Ji Y, Yang K, Peng S, et al. Kaposiform haemangioendothelioma: clinical features, complications and risk factors for Kasabach-Merritt phenomenon. *Br J Dermatol* 2018;179:457-63.
3. Guleria P, Barwad A. Paediatric mesenchymal tumors of the mediastinum. *Mediastinum* 2020. doi: 10.21037/med.2020.01.03.
4. O'Regan GM, Irvine AD, Yao N, et al. Mediastinal and neck kaposiform hemangioendothelioma: report of three cases. *Pediatr Dermatol* 2009;26:331-7.
5. Wallenstein MB, Hole MK, McCarthy C, et al. Mediastinal kaposiform hemangioendothelioma and Kasabach-Merritt phenomenon in a patient with no skin changes and a normal chest CT. *Pediatr Hematol Oncol* 2014;31:563-7.
6. Duan L, Renzi S, Weidman D, et al. Sirolimus Treatment of an Infant with Intrathoracic Kaposiform Hemangioendothelioma Complicated by Life-threatening Pleural and Pericardial Effusions. *J Pediatr Hematol Oncol* 2020;42:74-8.

7. Beaton A, Kuttler T, Hassan A, et al. Hemangioendothelioma: a rare case of a primary intracardiac tumor. *Pediatr Cardiol* 2013;34:194-7.
8. Drolet BA, Trenor CC 3rd, Brandão LR, et al. Consensus-derived practice standards plan for complicated Kaposiform hemangioendothelioma. *J Pediatr* 2013;163:285-91.
9. Ji Y, Chen S, Yang K, et al. Kaposiform hemangioendothelioma: current knowledge and future perspectives. *Orphanet J Rare Dis* 2020;15:39.
10. Putra J, Gupta A. Kaposiform haemangioendothelioma: a review with emphasis on histological differential diagnosis. *Pathology* 2017;49:356-62.
11. Bhagalia SR, Pardhe N, Gupta M, et al. Juvenile hemangioma: A case report with an emphasis on its clinical phases (evolution and involution), and immunohistochemically distinctive physiologic differences. *J Oral Maxillofac Pathol* 2011;15:316-9.
12. Ozeki M, Fujino A, Matsuoka K, et al. Clinical Features and Prognosis of Generalized Lymphatic Anomaly, Kaposiform Lymphangiomatosis, and Gorham-Stout Disease. *Pediatr Blood Cancer* 2016;63:832-8.
13. Ozeki M, Fukao T. Generalized Lymphatic Anomaly and Gorham-Stout Disease: Overview and Recent Insights. *Adv Wound Care (New Rochelle)* 2019;8:230-45.
14. Ji Y, Chen S, Peng S, et al. Kaposiform lymphangiomatosis and kaposiform hemangioendothelioma: similarities and differences. *Orphanet J Rare Dis* 2019;14:165.
15. Liu Q, Ouyang R, Chen P, et al. A case report of retiform hemangioendothelioma as pleural nodules with literature review. *Diagn Pathol* 2015;10:194.
16. Emberger M, Laimer M, Steiner H, et al. Retiform hemangioendothelioma: presentation of a case expressing D2-40. *J Cutan Pathol* 2009;36:987-90.
17. Gambarotti M, Righi A, Sbaraglia M, et al. Intraosseous papillary intralymphatic angioendothelioma (PILA): one new case and review of the literature. *Clin Sarcoma Res* 2018;8:1.
18. WHO Classification of Tumors Editorial Board. *Soft Tissue and Bone Tumours*. Lyon, France: IARC; 2020.
19. Cakir E, Demirag F, Gulhan E, et al. Mediastinal composite hemangioendothelioma. A rare tumor at an unusual location. *Tumori* 2009;95:98-100.
20. Fukunaga M, Suzuki K, Saegusa N, et al. Composite hemangioendothelioma: report of 5 cases including one with associated Maffucci syndrome. *Am J Surg Pathol* 2007;31:1567-72.
21. Shang Leen SL, Fisher C, Thway K. Composite hemangioendothelioma: clinical and histologic features of an enigmatic entity. *Adv Anat Pathol* 2015;22:254-9.
22. Papke DJ Jr, Hornick JL. What is new in endothelial neoplasia? *Virchows Arch* 2020;476:17-28.
23. Pantanowitz L, Dezube BJ. Kaposi sarcoma in unusual locations. *BMC Cancer* 2008;8:190.
24. Cipriano P, Nabais I, Melo N, et al. Chylous ascites in disseminated Kaposi sarcoma: an unusual manifestation as immune reconstitution inflammatory syndrome. *BMJ Case Rep* 2019;12:e228406.
25. Schneider JW, Dittmer DP. Diagnosis and Treatment of Kaposi Sarcoma. *Am J Clin Dermatol* 2017;18:529-39.
26. O'Donnell PJ, Pantanowitz L, Grayson W. Unique histologic variants of cutaneous Kaposi sarcoma. *Am J Dermatopathol* 2010;32:244-50.
27. Chapalain M, Goldman-Lévy G, Kramkimel N, et al. Anaplastic Kaposi's sarcoma: 5 cases of a rare and aggressive type of Kaposi's sarcoma. *Ann Dermatol Venereol* 2018;145:21-8.
28. Yu Y, Demierre MF, Mahalingam M. Anaplastic Kaposi's sarcoma: an uncommon histologic phenotype with an aggressive clinical course. *J Cutan Pathol* 2010;37:1088-91.
29. Breiteneder-Geleff S, Soleiman A, Kowalski H, et al. Angiosarcomas express mixed endothelial phenotypes of blood and lymphatic capillaries: podoplanin as a specific marker for lymphatic endothelium. *Am J Pathol* 1999;154:385-94.
30. Ueda K. KSHV Genome Replication and Maintenance in Latency. *Adv Exp Med Biol* 2018;1045:299-320.
31. McGinity M, Bartanusz V, Dengler B, et al. Pseudomyogenic hemangioendothelioma (epithelioid sarcoma-like hemangioendothelioma, fibroma-like variant of epithelioid sarcoma) of the thoracic spine. *Eur Spine J* 2013;22 Suppl 3:S506-S511.
32. Hornick JL, Fletcher CD. Pseudomyogenic hemangioendothelioma: a distinctive, often multicentric tumor with indolent behavior. *Am J Surg Pathol* 2011;35:190-201.
33. Pradhan D, Schoedel K, McGough RL, et al. Pseudomyogenic hemangioendothelioma of skin, bone and soft tissue—a clinicopathological, immunohistochemical, and fluorescence in situ hybridization study. *Hum Pathol* 2018;71:126-34.
34. Hung YP, Fletcher CD, Hornick JL. FOSB is a Useful Diagnostic Marker for Pseudomyogenic Hemangioendothelioma. *Am J Surg Pathol* 2017;41:596-606.
35. Sugita S, Hirano H, Kikuchi N, et al. Diagnostic utility of FOSB immunohistochemistry in pseudomyogenic

- hemangioendothelioma and its histological mimics. *Diagn Pathol* 2016;11:75.
36. Agaram NP, Zhang L, Cotzia P, et al. Expanding the Spectrum of Genetic Alterations in Pseudomyogenic Hemangioendothelioma With Recurrent Novel ACTB-FOSB Gene Fusions. *Am J Surg Pathol* 2018;42:1653-61.
 37. Anderson T, Zhang L, Hameed M, et al. Thoracic epithelioid malignant vascular tumors: a clinicopathologic study of 52 cases with emphasis on pathologic grading and molecular studies of WWTR1-CAMTA1 fusions. *Am J Surg Pathol* 2015;39:132-9.
 38. Suster S, Moran CA, Koss MN. Epithelioid hemangioendothelioma of the anterior mediastinum. Clinicopathologic, immunohistochemical, and ultrastructural analysis of 12 cases. *Am J Surg Pathol* 1994;18:871-81.
 39. den Bakker MA, Marx A, Mukai K, et al. Mesenchymal tumours of the mediastinum--part II. *Virchows Arch* 2015;467:501-17.
 40. Rosenbaum E, Jadeja B, Xu B, et al. Prognostic stratification of clinical and molecular epithelioid hemangioendothelioma subsets. *Mod Pathol* 2020;33:591-602.
 41. Deyrup AT, Tighiouart M, Montag AG, et al. Epithelioid hemangioendothelioma of soft tissue: a proposal for risk stratification based on 49 cases. *Am J Surg Pathol* 2008;32:924-7.
 42. Lamar JM, Motilal Nehru V, Weinberg G. Epithelioid Hemangioendothelioma as a Model of YAP/TAZ-Driven Cancer: Insights from a Rare Fusion Sarcoma. *Cancers (Basel)* 2018;10:229.
 43. Suurmeijer AJH, Dickson BC, Swanson D, et al. Variant WWTR1 gene fusions in epithelioid hemangioendothelioma-A genetic subset associated with cardiac involvement. *Genes Chromosomes Cancer* 2020;59:389-95.
 44. Antonescu CR, Le Loarer F, Mosquera JM, et al. Novel YAP1-TFE3 fusion defines a distinct subset of epithelioid hemangioendothelioma. *Genes Chromosomes Cancer* 2013;52:775-84.
 45. Antonescu C. Malignant vascular tumors--an update. *Mod Pathol* 2014;27 Suppl 1:S30-S38.
 46. Shibuya R, Matsuyama A, Shiba E, et al. CAMTA1 is a useful immunohistochemical marker for diagnosing epithelioid haemangioendothelioma. *Histopathology* 2015;67:827-35.
 47. Lin BT, Colby T, Gown AM, et al. Malignant vascular tumors of the serous membranes mimicking mesothelioma. A report of 14 cases. *Am J Surg Pathol* 1996;20:1431-9.
 48. Zhang PJ, Livolsi VA, Brooks JJ. Malignant epithelioid vascular tumors of the pleura: report of a series and literature review. *Hum Pathol* 2000;31:29-34.
 49. Luzar B, Ieremia E, Antonescu CR, et al. Cutaneous intravascular epithelioid hemangioma. A clinicopathological and molecular study of 21 cases. *Mod Pathol* 2020. [Epublished ahead of print].
 50. Weissferdt A, Kalhor N, Suster S, et al. Primary angiosarcomas of the anterior mediastinum: a clinicopathologic and immunohistochemical study of 9 cases. *Hum Pathol* 2010;41:1711-7.
 51. Fatima J, Duncan AA, Maleszewski JJ, et al. Primary angiosarcoma of the aorta, great vessels, and the heart. *J Vasc Surg* 2013;57:756-64.
 52. Wu J, Li X, Liu X. Epithelioid angiosarcoma: a clinicopathological study of 16 Chinese cases. *Int J Clin Exp Pathol* 2015;8:3901-9.
 53. Chan Y, El-Zimaity H, Darling GE. Primary angiosarcoma of the esophagus. *Ann Thorac Surg* 2013;95:e19-e20.
 54. Contreras AL, Punar M, Tamboli P, et al. Mediastinal germ cell tumors with an angiosarcomatous component: a report of 12 cases. *Hum Pathol* 2010;41:832-7.
 55. Matsuoka S, Koyama T, Takeda T, et al. Development of angiosarcoma in a mediastinal non-seminomatous germ cell tumor that exhibited growing teratoma syndrome during chemotherapy. *Thorac Cancer* 2019;10:111-5.
 56. Demiröz ŞM, Fındık G, Aydoğdu K, et al. Mediastinal epithelioid angiosarcoma arising in schwannoma: The first case in the literature. *Turk Gogus Kalp Damar Cerrahisi Derg* 2018;26:305-8.
 57. Tane S, Tanaka Y, Tauchi S, et al. Radically resected epithelioid angiosarcoma that originated in the mediastinum. *Gen Thorac Cardiovasc Surg* 2011;59:503-6.
 58. Engelhardt KE, DeCamp MM, Yang AD, et al. Treatment Approaches and Outcomes for Primary Mediastinal Sarcoma: Analysis of 976 Patients. *Ann Thorac Surg* 2018;106:333-9.
 59. Svajdler M, Benický M, Fröhlichová L, et al. Foamy cell angiosarcoma is a diagnostic pitfall: a case report of an angiosarcoma mimicking xanthoma. *Am J Dermatopathol* 2014;36:669-72.
 60. Ginter PS, Mosquera JM, MacDonald TY, et al. Diagnostic utility of MYC amplification and anti-MYC immunohistochemistry in atypical vascular lesions, primary or radiation-induced mammary angiosarcomas, and primary angiosarcomas of other sites. *Hum Pathol* 2014;45:709-16.

61. den Bakker MA, Marx A, Mukai K, et al. Mesenchymal tumours of the mediastinum--part I. *Virchows Arch* 2015;467:487-500.
62. Bean GR, Joseph NM, Gill RM, et al. Recurrent GNAQ mutations in anastomosing hemangiomas. *Mod Pathol* 2017;30:722-7.
63. Bean GR, Joseph NM, Folpe AL, et al. Recurrent GNA14 mutations in anastomosing haemangiomas. *Histopathology* 2018;73:354-7.

doi: 10.21037/med-20-40

Cite this article as: Paral K, Krausz T. Vascular tumors of the mediastinum. *Mediastinum* 2020;4:25.