



Corrigendum

Corrigendum to “Quantitative determination of multi-class bioactive constituents for quality assessment of ten *Anoectochilus*, four *Goodyera* and one *Ludisia* species in China” [Chinese Herbal Medicines 12 (2020) 430–439]

Yan-bin Wu^a, Meng-chao Peng^a, Chao Zhang^a, Jian-guo Wu^a, Bing-zhu Ye^b, Jun Yi^c, Jin-zhong Wu^{a,*}, Cheng-jian Zheng^{b,*}

^a School of Pharmacy, Fujian University of Traditional Chinese Medicine, Fuzhou 350122, China

^b Department of Pharmacognosy, School of Pharmacy, Naval Medical University, Shanghai, 200433, China

^c Department of Science, Fujian Institute of Education, Fuzhou 350001, China

The authors regret for the changes in Fig. 6 as follow:

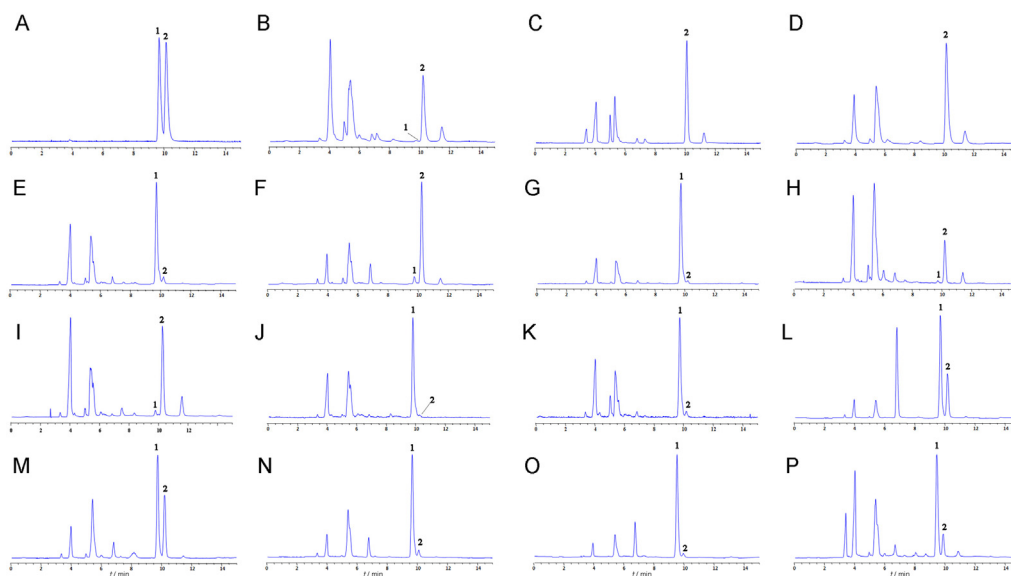


Fig. 6. HPLC-ELSD chromatograms of ten *Anoectochilus*, four *Goodyera* and one *Ludisia* species on AQ-C₁₈ column. A) standards mixture of kinsenoside and goodyeroside; B) *A. roxburghii*; C) *A. formosanus*; D) *A. xingrenensis*; E) *A. lylei*; F) *A. nandanensis*; G) *A. longilobus*; H) *A. brevilabris*; I) *A. burmannicus*; J) *A. elatus*; K) *A. zhejiangensis*; L) *G. schlechtendaliana*; M) *G. biflora*; N) *G. yangmeishanensi*; O) *G. repens*; P) *L. discolor*. 1. goodyeroside A; 2. Kinsenoside.

The authors would like to apologise for any inconvenience caused.

DOI of original article: <https://doi.org/10.1016/j.chmed.2020.07.002>

* Corresponding authors.

E-mail addresses: jinzhongfj@126.com (J.-z. Wu), zhengchengjian1984@126.com (C.-j. Zheng).

<https://doi.org/10.1016/j.chmed.2021.04.012>

1674-6384/© 2021 Tianjin Press of Chinese Herbal Medicines Published by ELSEVIER B.V.

This is an open access article under the CC BY-NC-ND license (<http://creativecommons.org/licenses/by-nc-nd/4.0/>).