

Review Article

Anderson–Fabry Disease: From Endothelial Dysfunction to Emerging Therapies

Cosimo A. Stamerra,¹ Rita Del Pinto,¹ Paolo di Giosia,¹ Claudio Ferri,¹
and Amirhossein Sahebkar ^{2,3,4}

¹University of L'Aquila, Department of Life, Health and Environmental Sciences, Building Delta 6-San Salvatore Hospital, Via Vetoio, Coppito, L'Aquila 67100, Italy

²Biotechnology Research Center, Pharmaceutical Technology Institute, Mashhad University of Medical Sciences, Mashhad, Iran

³Applied Biomedical Research Center, Mashhad University of Medical Sciences, Mashhad, Iran

⁴School of Pharmacy, Mashhad University of Medical Sciences, Mashhad, Iran

Correspondence should be addressed to Amirhossein Sahebkar; amir_saheb2000@yahoo.com

Received 20 February 2021; Accepted 7 May 2021; Published 13 May 2021

Academic Editor: Mounir Tilaoui

Copyright © 2021 Cosimo A. Stamerra et al. This is an open access article distributed under the Creative Commons Attribution License, which permits unrestricted use, distribution, and reproduction in any medium, provided the original work is properly cited.

The Anderson–Fabry disease is a rare, X-linked, multisystemic, progressive lysosomal storage disease caused by α -galactosidase A total or partial deficiency. The resulting syndrome is mainly characterized by early-onset autonomic neuropathy and life-threatening multiorgan involvement, including renal insufficiency, heart disease, and early stroke. The enzyme deficiency leads to tissue accumulation of the glycosphingolipid globotriaosylceramide and its analogues, but the mechanisms linking such accumulation to organ damage are only partially understood. In contrast, enzyme replacement and chaperone therapies are already fully available to patients and allow substantial amelioration of quality and quantity of life. Substrate reduction, messenger ribonucleic acid (mRNA)-based, and gene therapies are also on the horizon. In this review, the clinical scenario and molecular aspects of Anderson–Fabry disease are described, along with updates on disease mechanisms and emerging therapies.

1. Introduction

The Anderson–Fabry disease, or Fabry disease, was described by Johannes Fabry in Germany and William Anderson in England in 1898 [1, 2]. The disease was then attributed to an enzyme defect by Brady in 1967 and Kint in 1970 [3, 4]. It can be defined as an X-linked, multisystemic, progressive lysosomal storage disease, caused by a defect in the GLA gene that encodes for the α -galactosidase enzyme (α -Gal A) [5]. Over 600 mutations affecting the GLA gene have been described to date [6]. The gene is located on the long arm of the X chromosome (locus Xq22.1), and the disease is transmitted from the mother to the males, hemizygous, and to the females, heterozygous [5]. However, also heterozygous females who inherit the affected gene may manifest the Anderson–Fabry disease, presenting with a rather variable clinical involvement [5]. This phenotypic

variability is caused by the phenomenon called “lyonization”: the random inactivation of one of the two X chromosomes of somatic cells. Depending on the number of inactive Xs, the heterozygous woman with Anderson–Fabry disease can present a great variability in the clinical expression of the phenotype, from a condition of total well-being to one characterized by severe symptoms [5]. The partial or complete lack of activity of the enzyme leads to the progressive accumulation of substrate, the glycosphingolipid globotriaosylceramide (GL-3), and its derivative globotriaosylsphingosine (lyso-GL-3), in different cell types. The process preferentially affects the endothelium, myocytes, renal cells, and neurons, increasing the risk of ischemia and tissue infarction [5, 7].

The spectrum of clinical manifestations of Anderson–Fabry disease ranges from the classic to severe phenotype, even in patients with the same genetic mutation

[5, 8]. Symptoms of the classic phenotype first occur during childhood or early adolescence with the involvement of the peripheral nervous system. Unlike the classical form, late-onset Fabry disease patients are asymptomatic during childhood or adolescence and become symptomatic between the ages of 30 and 70. Thereafter, disease progression is characterized by renal, cardiac, and neurological involvement, leading to potentially fatal clinical manifestations [8].

Despite a generally more blunted clinical involvement, most of the heterozygous carriers also suffer from significant morbidity and premature mortality [7].

Before the introduction of specific therapy (i.e., enzyme replacement therapy, ERT; oral chaperone therapy), the therapeutic approach to Anderson–Fabry disease essentially consisted of symptomatic treatments, such as the use of analgesics and non-specific measures, including pharmacological prophylaxis of ischemic events, cardiac surgery, dialysis, and renal transplantation.

The purpose of this review is to describe the clinical and molecular aspects of Anderson–Fabry disease, with updates on physiopathological mechanisms and emerging therapies. We performed a review of the available literature in “PubMed” database; in order to find relevant articles, we combined each of the following keywords: “Fabry Disease,” “Endothelium,” “Vascular,” “Enzyme Replacement Therapy,” “Genetic Therapy,” “Molecular Chaperones.”

2. Pathophysiology

Accumulation of GL-3 begins in the fetal period [9, 10], but patients are asymptomatic during the first years of life. Initial symptoms depend on tissues and organs affected by the lysosomal accumulation of GL-3, indicating that the primary pathological processes take place inside the cells where substrate accumulation occurs. This phenomenon is thought to lead to structural damage and abnormal cell function (e.g., limited contractility of muscle cells, altered expression of surface molecules, or abnormal release of cellular products). In turn, it could trigger secondary pathological processes with demonstrated potential of systemic impact, including inflammation [11, 12], ischemia, hypertrophy, and fibrosis [13, 14]. Both primary and secondary pathological processes can progressively induce a damage in an organ system and contribute to multisystemic failure [13, 14] and frailty [15, 16]. The pathophysiology of Anderson–Fabry disease involves the ubiquitous accumulation of GL-3 in several cell types [9, 17]. The disease progression involves, over time, different organ systems. Late complications and failure may occur in the kidney, heart, or cerebrovascular system. Central and peripheral nervous system is usually involved first. This leads to several initial symptoms such as hypohidrosis, acroparesthesias, and episodic pain crises [9, 17] (Figure 1).

Ischemia plays a key role in shaping the disease phenotype, where small vessels in the cerebrovascular system, heart, kidney, peripheral nervous system, and skin can all be affected, reflecting the systemic vasculopathy that is typical of the disease [9, 17]. However, cerebrovascular complications (transient ischemic attacks and early-onset strokes)

caused by cerebral vasculopathy are a major cause of morbidity and early mortality in patients with Anderson–Fabry disease, independent of gender [11, 18]. Other cardiovascular manifestations of the disease also include hypertension, left-ventricular hypertrophy, valvulopathies, and cardiac conduction disorders. Renal and heart failure, ischemic heart disease, and potentially fatal arrhythmias represent additional, life-threatening complications of the disease [5]. Several mechanisms are thought to contribute to ischemic tissue damage. Occlusion and luminal obstruction due to the accumulation of GL-3 in vascular endothelial cells, perturbation of the balance between vasodilators and vasoconstrictors, and thromboembolic complications could all play a role [13, 19].

Early peripheral neuropathy reflects the functional deterioration of neuronal cells in the peripheral autonomous and somatosensory nervous system, due to GL-3 deposits in the vasa vasorum of small myelinated and non-myelinated fibers [15, 20]. Deposits in the dorsal root ganglia cause abnormalities in the threshold of pain perception [17, 21]. Hypohidrosis occurs as a sign of selective damage to peripheral nerves [10, 18], although it has been attributed to lipid deposits in the small vessels surrounding the sweat glands as an alternative hypothesis [12, 19].

Early gastrointestinal manifestations are thought to be due to the accumulation of GL-3 in the vascular endothelium of the mesenteric blood vessels, in non-myelinated neurons, in perineural cells, and in autonomic ganglia of the gastrointestinal tract [14, 20].

Vascular cutaneous lesions (angiokeratomas) are caused by weakening of the capillary wall after the accumulation of GL-3 and the development of vascular ectasias in the dermis and epidermis [16, 21].

3. Anderson–Fabry Disease and Endothelial Dysfunction

Endothelial dysfunction in Anderson–Fabry disease has been described in several studies, both in terms of altered flow mediated dilation (FMD) and of serum biomarkers of dysfunctional endothelium [22]. Possible mechanisms behind this observation include accumulation of GL-3 in the endothelium; proliferation of smooth muscle cells; increase in the intima-media thickness (IMT); hyperexpression of endothelial activation markers; a phenotypic switch towards a prothrombotic phenotype; and decreased bioavailability of nitric oxide (NO) [23] (Figure 2). Specifically, GL-3 deposits in the vascular wall are thought to promote the proliferation of smooth muscle cells, causing remodelling of the arterial wall and the narrowing of the arterial lumen. This effect has also been described as a consequence of lyso-GL-3 accumulation [24]. The resulting increase in the shear stress might be responsible for a downstream cascade of molecular events, including the upregulation of local renin-angiotensin system that, in turn, induces a pro-thrombotic, pro-inflammatory status and impairs endothelial release of NO [25]. Another possibility is that the substrate accumulation itself is able to induce an overactivation of nicotinamide adenine dinucleotide phosphate (NADPH) and the

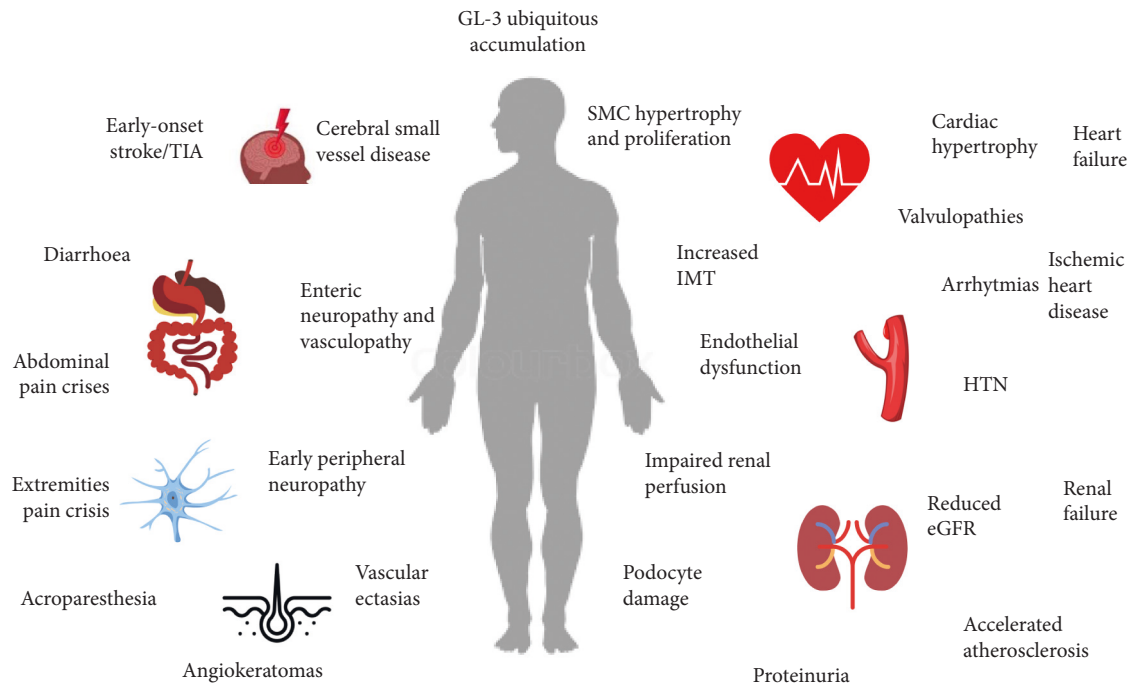


FIGURE 1: Pathophysiology and clinical correlates of Anderson–Fabry disease. The ubiquitous accumulation of GL-3 is central to disease onset and progression.

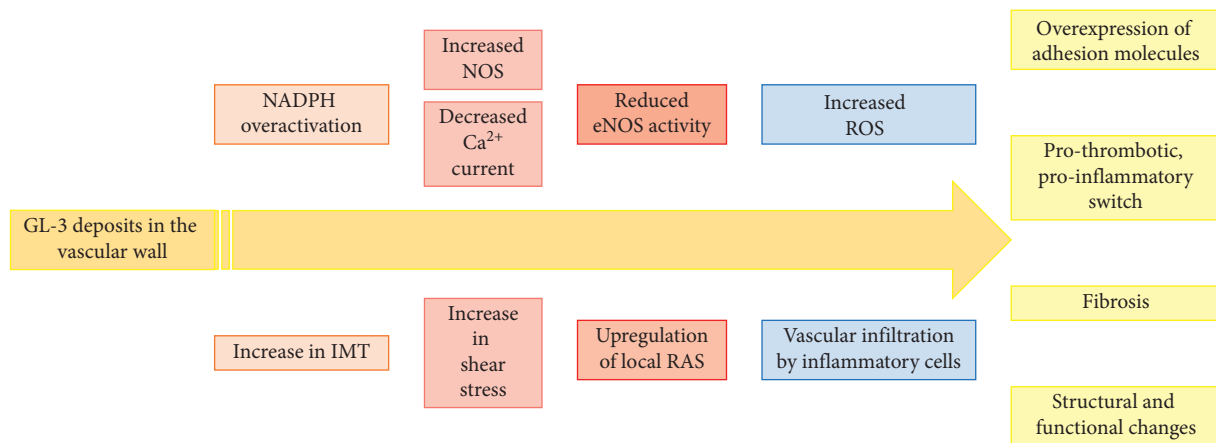


FIGURE 2: Possible mechanisms of endothelial dysfunction in Anderson–Fabry disease. IMT: intima-media thickness; NADPH: nicotinamide adenine dinucleotide phosphate; eNOS: endothelial nitric oxide synthase; RAS: renin-angiotensin system; ROS: reactive oxygen species; ROS: reactive oxygen species.

uncoupling of endothelial NO synthase (eNOS), with lower NO bioavailability, increased formation of reactive oxygen species (ROS), and overexpression of cell adhesion molecules (CAMs) (i.e., intercellular adhesion molecule 1, ICAM-1; vascular cellular adhesion molecule 1, VCAM-1; and E-selectin) [26–28]. All these events might mediate the onset of vascular complications in Anderson–Fabry patients. This is in agreement with consistent evidence showing that the increase in ROS production plays a crucial role in the development of atherosclerosis and cardiovascular disorders. At the cellular level, in fact, ROS are able to induce irreversible damage to deoxyribonucleic acid (DNA), lipids, and proteins [29, 30], leading to low-density lipoprotein (LDL)

oxidation, overexpression of adhesion molecules, and cellular dysfunction [31, 32].

ROS-induced transcription of CAMs, which is mediated by nuclear factor K-b (NF-Kb) and other transcription factors, also contributes to the Anderson–Fabry vasculopathy [33]. In fact, E-selectin, ICAM-1, and VCAM-1 induce the rolling and adhesion of leukocytes at the endothelial level, initiating the arterial wall infiltration and damage [28]. Notably, this effect is reversible after the administration of α -Gal A [28].

An additional mechanism of vascular dysfunction in the disease consists in GL-3-mediated internalization of calcium-activated potassium channels (KCa3.1), with

consequent reduction in calcium currents and intracellular calcium levels and downregulation of eNOS [34]. Specifically, reduced KCa3.1 expression in the plasma membrane is secondary to clathrin-dependent lysosomal degradation of the channel, induced by the substrate accumulation [34] (Figure 2).

It has also been suggested that the accumulation of GL-3 alone is sufficient to dysregulate eNOS activity, with consequent decreased synthesis of NO and abnormal production of reactive nitrogen species, namely, 3-nitrotyrosine (3NT) [35] (Figure 2). Increased levels of 3NT were not only found in mice but also in biobanked plasma samples from patients with classical Anderson–Fabry disease, suggesting its potential use as a biomarker for vascular impairment in the disease [35]. According to preliminary evidence in humans, other molecules with the potential of serum biomarkers of the disease include matrix metalloproteinase 9 (MMP-9), angiotensin, symmetric dimethylarginine (SDMA), and the L-homoarginine (hArg)/SDMA ratio [36]. In particular, SDMA was found to be associated with diagnosed cardiomyopathy, indexed left-ventricular mass, and high sensitive troponin T in these patients [36]. MMP-9 and angiotensin levels were also elevated in patients compared to controls [36], potentially reflecting increased extracellular matrix turnover, although they might also mirror the reduced NO bioavailability typical of the disease [37]. Increased SDMA levels in association with reduced hArg/SDMA ratio among patients could be the expression of endothelial dysfunction and increased oxidative stress [38, 39]. Impairment in alternative, non-NO endothelium-dependent vasodilatory pathways has also been described in small human studies on normotensive and normocholesterolemic patients with Anderson–Fabry disease [40]. Specifically, compared with controls, patients showed increased vasodilation following acetylcholine infusion even after administration of the eNOS inhibitor NG-monomethyl-L-arginine (L-NMMA) [40]. The evidence of less vasoconstriction in patients compared with controls following L-NMMA infusion also suggests the dominance of alternative, non-NO pathways in patients with Fabry, possibly due to eNOS downregulation [40].

The accumulation of GL-3 in the lysosomes of vascular cells, and in particular in myocytes in the cardiac phenotype, causes, in addition to the mechanisms described, alterations in energy metabolism, mitochondrial dysfunction, and activation of inflammatory molecules leading to autoimmune myocarditis [41–43].

In relation to the involvement of the mitochondrial dysfunction in the onset of oxidative stress, mutations in mitochondrial DNA (mtDNA) have been associated with a decline in energy production and an increased propensity for a number of pathological conditions. Specific mtDNA haplogroups may therefore lead to different mitochondrial and mtDNA vulnerability to oxidative stress, which might also be differently relevant in different tissues, thus modulating the phenotype and the natural course of the disease [44].

These pathological changes, associated with GL-3 related damage to the sympathetic nervous system, cause the onset

of cardiac conduction disorders, left ventricular hypertrophy, and heart failure even with preserved ejection fraction [45, 46].

4. Enzyme Replacement Therapy and Emerging Treatment Options

The natural history of Anderson–Fabry disease was significantly improved by the introduction, in 2001, of the first specific treatment for the disease, i.e., ERT, based on the administration of human recombinant forms of α -Gal A [41, 42, 47, 48] (Figure 3).

In a healthy cell, the newly produced enzyme undergoes sequential post-translational modifications in the endoplasmic reticulum and Golgi apparatus; among the various modifications, the bond with mannose or mannose-6-phosphate (M6P) residues occurs in particular. The excreted enzymes can bind to a neighbor's M6P receptor cell with lysosomal disease (LD). The LD cell therefore internalizes the entire complex by endocytosis of the M6P receptor. The resulting endosomes containing the enzyme fuse with the lysosomes, providing the functioning enzyme in the LD cell and correcting the storage defect. This phenomenon is called cross correction and constitutes the point on which the lysosomal ERT is based [49].

There are currently two available ERT options: agalsidase- α (0.2 mg/kg/14 days) and agalsidase- β (1 mg/kg/14 days), which are administered intravenously [41, 42, 47, 48].

According to systematic reviews and meta-analyses, ERT stabilizes and may slow disease progression, especially when started at an early age, with evidence of a dose effect and benefits on major outcomes, such as cerebrovascular, cardiac, and renal complications [42–44, 48–50]. Specifically, a recent systematic literature review on 166 publications including 36 clinical trials examined the efficacy of ERT in adult men [42, 48]. In parallel to a drastic reduction in plasma, urine, and tissue concentrations of GL-3, ERT was found to determine a variety of clinical effects: from slowing the decline in estimated glomerular filtration rate (eGFR), to reducing or stabilizing cardiac remodelling and ameliorating neurological and gastrointestinal symptoms [42, 48]. The lack of clinical improvements, but also of further deterioration, during ERT was regarded as a marker of clinical benefit in an otherwise progressive, debilitating disease associated with a risk of premature mortality [42, 45, 46, 48, 51, 52].

An updated Cochrane review of 9 randomized controlled trials (RCTs) of agalsidase- α or - β compared to other or no interventions, for a total of 351 participants, showed significant improvement with ERT in terms of microvascular endothelial deposits of GL-3 and pain-related quality of life, as well as positive effects on cardiac morphology and renal function, with a good safety profile and tolerability [43, 49]. However, no specific information was provided in the included trials on correlations of GL-3 with clinical events or survival, but these data would be better provided by patient registries, since long-term, large studies are required for this purpose [43, 49].

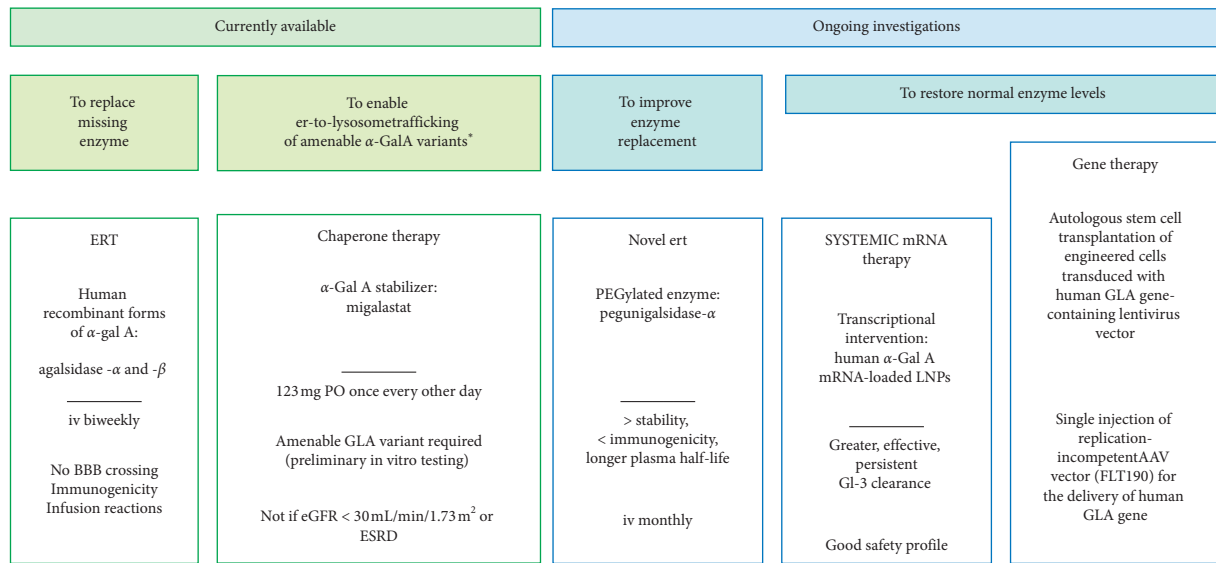


FIGURE 3: Enzyme replacement therapy and emerging alternatives. * abnormally folded, unstable α -Gal A protein with preserved enzymatic activity; iv: intravenous; ER: endoplasmic reticulum; eGFR: estimated glomerular filtration rate; ESRD: end-stage renal disease; BBB: blood-brain barrier; AAV: adeno-associated viral vector; LNPs: lipid nanoparticles.

Further, a meta-analysis of 7 cohort studies and 2 RCTs involving 7513 participants (mean age 40.9 years, 51.9% men, about 20% on ERT, mean follow-up 4.1 years) and examining the benefit of ERT for stroke prevention showed lower stroke recurrence ratio in the ERT treatment group (8.2% versus 16%, $p = 0.03$) [44, 50].

Overall, current evidence indicates that the most evident clinical results are obtained in subjects who started ERT at an earlier age [47–50, 53–56]. This was particularly true for renal events, where prevention of renal failure was only obtained if ERT was started before the development of glomerulosclerosis and proteinuria [49, 51, 55, 57]; otherwise, eGFR improvement was much more modest [48, 54]. For what concerns cardiac complications, subjects who began taking ERT before the development of cardiac fibrosis, i.e., substantially before the age of 30, were more likely to achieve a significant reduction in left ventricular mass; this effect was much more modest when ERT was started over 50 years of age [34, 52, 58]. Two recent publications have demonstrated a significant reduction in clinical events in patients who started ERT before age 40 compared to older ones [53, 54, 59, 60].

Despite the absence of head-to-head comparative studies between agalsidase- α and agalsidase- β , many studies show that ERT could improve outcomes in a dose-dependent manner. In studies where both recombinant enzymes were included (agalsidase- α 0.2 mg/kg/14 days and agalsidase- β 1 mg/kg/14 days), a greater reduction in plasma and urinary concentrations of GL-3 was found after treatment with agalsidase- β [55, 56, 61, 62]. These benefits were also obtained by increasing the usual dosage of agalsidase- α , with improvement in renal function and reduction of proteinuria [57, 58, 63, 64]. On the contrary, a reduction in the agalsidase- β dosage was associated with an increase in plasma, urinary, and renal values of GL-3, as well as with worsening

of neurological and gastrointestinal symptoms [59–61, 65–67]; these negative effects were also found after switching to agalsidase- α [62, 68]. A large multicentre retrospective cohort study, in 2018, showed that agalsidase- β administration causes a greater biochemical response and a better reduction in left ventricular mass compared to agalsidase- α [69].

Recently, newer therapeutic options have risen to offer an alternative to ERT, overcome some ERT-related inconveniences, such as response variability, immunogenicity, infusion reactions, inability of blood-brain barrier crossing, and reproducibility of proper glycosylation patterns [63, 70], or attempt to intervene at the genetic or the transcriptional level to restore normal enzyme levels (Figure 3). They include oral chaperone therapy with migalastat [64, 65, 71, 72]; a novel PEGylated ERT, pegunigalsidase- α [66, 73, 74]; lucerastat, an inhibitor of the glucosylceramide synthetase (GCS) [75]; gene therapy using viral vectors [67–71, 74, 76–80]; and systemic messenger-RNA (mRNA) therapy (MRT), based on the delivery of biosynthetic mRNA transcripts as the source for therapeutic protein [63, 70]. Migalastat is an oral α -Gal A stabilizer representing an alternative to intravenous ERT, which facilitates normal lysosomal trafficking in the presence of susceptible mutated enzyme forms [64, 71]. Pegunigalsidase- α , a chemically modified α -Gal A enzyme incorporating polyethylene glycol (PEG) moieties administered as an infusion directly into the bloodstream, is characterized by greater stability, reduced immunogenicity, and longer plasma half-life compared to traditional ERT, thus allowing monthly administration [66, 73]. Lucerastat is shown to effectively inhibit GCS and to markedly reduce the GL-3 substrate of the defective α -Gal A enzyme in Fabry subjects on ERT, independent of their mutation or phenotype [75]. Currently investigated gene

therapies include the autologous stem cell transplantation of engineered cells (CD34+ cells transduced with the human GLA gene-containing lentivirus vector) and the delivery of a replacement copy of the missing gene by means of an adeno-associated viral vector (FLT190) [70, 72, 78, 81]. The monthly delivery of in vitro-synthesized human α -Gal A mRNA using a lipid nanoparticles- (LNP-) based formulation has been tested in a mouse model of the disease (GLA^{tm1kul}) and in wild-type non-human primates, showing multiorgan biodistribution and deposition of the enzyme, effective and persistent (6 weeks) Gl-3 clearance that was superior to that obtained with ERT, and a good safety profile [63, 70, 73, 82]. If confirmed in human studies, this approach would represent another appealing opportunity to interfere with the natural history of the disease.

While migalastat has been recently approved for the treatment of Anderson–Fabry disease in the presence of specific mutations in the GLA gene and eGFR ≥ 30 mL/min/1.73 m² [74, 83], safety and efficacy of the other therapeutic strategies are currently being investigated in phase 1 and 2 trials [66, 70, 71, 75].

Therapeutic recommendations emphasize that it is advisable to begin medical treatment of Fabry disease possibly before the onset of irreversible organ damage [84]; in particular, the treatment with ERT allows reducing the accumulation of GL3 and the initiation of events related to the endothelial dysfunction if started before the onset of tissue fibrosis and organ failure [85].

5. Conclusions

Anderson–Fabry disease is a rare, highly debilitating, inherited systemic disease where partial or total α -Gal A deficiency results in progressive multisystemic failure. Endothelial dysfunction represents one of the mechanisms behind the development of end-stage, irreversible complications of the disease, but the underlying mechanisms have only partially been elucidated. Unlike the past, promising therapies are now available or under investigation to delay the onset of organ damage and the related burden of morbidity and mortality. Early initiation of specific treatment offers unprecedented benefits in terms of protection against disease progression and related complications, but long-term, large, prospective studies are needed to define the relative impact on disease prognosis.

Data Availability

No data were used to support this study.

Disclosure

Cosimo A. Stamerra and Rita Del Pinto are the co-first authors.

Conflicts of Interest

The authors declare that they have no conflicts of interest.

Authors' Contributions

All the authors contributed to the study. All the authors read and approved the final version of the manuscript.

References

- [1] J. Fabry, "Ein Beitrag zur Kenntniss der Purpura haemorrhagica nodularis (Purpura papulosa haemorrhagica hebrae)," *Archiv für Dermatologie und Syphilis*, vol. 43, no. 1, pp. 187–200, 1898.
- [2] W. Anderson, "A case of "angeio-keratoma"," *British Journal of Dermatology*, vol. 10, no. 4, pp. 113–117, 1898.
- [3] R. O. Brady, "Enzymatic abnormalities in diseases of sphingolipid metabolism," *Clinical Chemistry*, vol. 13, no. 7, pp. 565–577, 1967.
- [4] J. A. Kint, "Fabry's disease: alpha-galactosidase deficiency," *Science*, vol. 167, no. 3922, pp. 1268–1269, 1970.
- [5] Y. A. Zarate and R. J. Hopkin, "Fabry's disease," *The Lancet*, vol. 372, no. 9647, pp. 1427–1435, 2008.
- [6] S. Saito, K. Ohno, and H. Sakuraba, "Comparative study of structural changes caused by different substitutions at the same residue on α -galactosidase A," *PLoS One*, vol. 8, p. e84267, 2013.
- [7] C. M. Eng, D. P. Germain, M. Banikazemi et al., "Fabry disease: guidelines for the evaluation and management of multi-organ system involvement," *Genetics in Medicine*, vol. 8, no. 9, pp. 539–548, 2006.
- [8] R. Schiffmann, "Fabry disease," *Pharmacology & Therapeutics*, vol. 122, no. 1, pp. 65–77, 2009.
- [9] A. C. Vedder, A. Strijland, M. A. V. B. Weerman, S. Florquin, J. M. F. G. Aerts, and C. E. M. Hollak, "Manifestations of Fabry disease in placental tissue," *Journal of Inherited Metabolic Disease*, vol. 29, no. 1, pp. 106–111, 2006.
- [10] A. Onishi and P. J. Dyck, "Loss of small peripheral sensory neurons in Fabry disease. histologic and morphometric evaluation of cutaneous nerves, spinal ganglia, and posterior columns," *Archives of neurology*, vol. 31, pp. 120–127, 1974.
- [11] D. Pietropaoli, R. Del Pinto, C. Ferri et al., "Poor oral health and blood pressure control among US hypertensive adults," *Hypertension*, vol. 72, no. 6, pp. 1365–1373, 2018.
- [12] L.-M. Lao, M. Kumakiri, H. Mima et al., "The ultrastructural characteristics of eccrine sweat glands in a Fabry disease patient with hypohidrosis," *Journal of Dermatological Science*, vol. 18, no. 2, pp. 109–117, 1998.
- [13] D. P. Germain, "Fabry disease," *Orphanet Journal of Rare Diseases*, vol. 5, no. 1, p. 30, 2010.
- [14] K. J. Sheth, S. L. Werlin, M. E. Freeman, and A. E. Hodach, "Gastrointestinal structure and function in Fabry's disease," *The American Journal of Gastroenterology*, vol. 76, pp. 246–251, 1981.
- [15] R. Del Pinto and C. Ferri, "Hypertension management at older age: an update," *High Blood Pressure & Cardiovascular Prevention*, vol. 26, no. 1, pp. 27–36, 2019.
- [16] P. I. Schiller and P. H. Itin, "Angiokeratomas: an update," *Dermatology*, vol. 193, no. 4, pp. 275–282, 1996.
- [17] D. A. Laney, R. L. Bennett, V. Clarke et al., "Fabry disease practice guidelines: recommendations of the national society of genetic counselors," *Journal of Genetic Counseling*, vol. 22, no. 5, pp. 555–564, 2013.
- [18] K. Sims, J. Politei, M. Banikazemi, and P. Lee, "Stroke in Fabry disease frequently occurs before diagnosis and in the absence of other clinical events: natural history data from the Fabry registry," *Stroke*, vol. 40, no. 3, pp. 788–794, 2009.

- [19] T. DeGraba, S. Azhar, F. Dignat-George et al., "Profile of endothelial and leukocyte activation in Fabry patients," *Annals of Neurology*, vol. 47, no. 2, pp. 229–233, 2000.
- [20] M. J. Hilz, M. Brys, H. Marthol, B. Stemper, and M. Dütsch, "Enzyme replacement therapy improves function of C-, A δ -, and A β -nerve fibers in Fabry neuropathy," *Neurology*, vol. 62, no. 7, pp. 1066–1072, 2004.
- [21] E. H. Kolodny and G. M. Pastores, "Anderson-Fabry disease: extrarenal, neurologic manifestations," *Journal of the American Society of Nephrology*, vol. 13, no. 2, pp. S150–S153, 2002.
- [22] K. Satoh, "Globotriaosylceramide induces endothelial dysfunction in Fabry disease," *Arteriosclerosis, Thrombosis, and Vascular Biology*, vol. 34, no. 1, pp. 2–4, 2014.
- [23] R. J. Kallikokoski, K. K. Kallikokoski, M. Penttinen et al., "Structural and functional changes in peripheral vasculature of Fabry patients," *Journal of Inherited Metabolic Disease*, vol. 29, no. 5, pp. 660–666, 2006.
- [24] J. M. Aerts, J. E. Groener, S. Kuiper et al., "Elevated globotriaosylsphingosine is a hallmark of Fabry disease," *Proceedings of the National Academy of Sciences*, vol. 105, no. 8, pp. 2812–2817, 2008.
- [25] S. M. Rombach, T. B. Twickler, J. M. F. G. Aerts, G. E. Linthorst, F. A. Wijburg, and C. E. M. Hollak, "Vasculopathy in patients with Fabry disease: current controversies and research directions," *Molecular Genetics and Metabolism*, vol. 99, no. 2, pp. 99–108, 2010.
- [26] D. T. Eitzman, P. F. Bodary, Y. Shen et al., "Fabry disease in mice is associated with age-dependent susceptibility to vascular thrombosis," *Journal of the American Society of Nephrology*, vol. 14, no. 2, pp. 298–302, 2003.
- [27] J. L. Park, S. E. Whitesall, L. G. D'Alecy, L. Shu, and J. A. Shayman, "Vascular dysfunction in the α -galactosidase a-knockout mouse is an endothelial cell-, plasma membrane-based defect," *Clinical and Experimental Pharmacology and Physiology*, vol. 35, no. 10, pp. 1156–1163, 2008.
- [28] J.-S. Shen, X.-L. Meng, D. F. Moore et al., "Globotriaosylceramide induces oxidative stress and up-regulates cell adhesion molecule expression in Fabry disease endothelial cells," *Molecular Genetics and Metabolism*, vol. 95, no. 3, pp. 163–168, 2008.
- [29] D. Pietropaoli, E. Ortu, M. Severino, I. Ciarrocchi, R. Gatto, and A. Monaco, "Glycation and oxidative stress in the failure of dental implants: a case series," *BMC Research Notes*, vol. 6, p. 296, 2013.
- [30] D. Pietropaoli, A. Monaco, R. Del Pinto, M. G. Cifone, G. Marzo, and M. Giannoni, "Advanced glycation end products: possible link between metabolic syndrome and periodontal diseases," *International Journal of Immunopathology and Pharmacology*, vol. 25, no. 1, pp. 9–17, 2012.
- [31] N. R. Madamanchi, A. Vendrov, and M. S. Runge, "Oxidative stress and vascular disease," *Arteriosclerosis, Thrombosis, and Vascular Biology*, vol. 25, no. 1, pp. 29–38, 2005.
- [32] R. Del Pinto and C. Ferri, "Inflammation-accelerated senescence and the cardiovascular system: mechanisms and perspectives," *International Journal of Molecular Sciences*, vol. 19, no. 12, p. 3701, 2018.
- [33] T. Collins, M. A. Read, A. S. Neish, M. Z. Whitley, D. Thanos, and T. Maniatis, "Transcriptional regulation of endothelial cell adhesion molecules: NF- κ B and cytokine-inducible enhancers," *The FASEB Journal*, vol. 9, no. 10, pp. 899–909, 1995.
- [34] S. Choi, J. A. Kim, H.-Y. Na et al., "Globotriaosylceramide induces lysosomal degradation of endothelial K_{Ca} 3.1 in Fabry disease," *Arteriosclerosis, Thrombosis, and Vascular Biology*, vol. 34, no. 1, pp. 81–89, 2014.
- [35] L. Shu, A. Vivekanandan-Giri, S. Pennathur et al., "Establishing 3-nitrotyrosine as a biomarker for the vasculopathy of Fabry disease," *Kidney International*, vol. 86, no. 1, pp. 58–66, 2014.
- [36] J. Loso, N. Lund, M. Avanesov et al., "Serum biomarkers of endothelial dysfunction in fabry associated cardiomyopathy," *Frontiers in Cardiovascular Medicine*, vol. 5, p. 108, 2018.
- [37] T. Matsunaga, D. W. Weihrauch, M. C. Moniz, J. Tessmer, D. C. Wartier, and W. M. Chilian, "Angiostatin inhibits coronary angiogenesis during impaired production of nitric oxide," *Circulation*, vol. 105, no. 18, pp. 2185–2191, 2002.
- [38] R. H. Böger, "Association of asymmetric dimethylarginine and endothelial dysfunction," *Clinical Chemistry and Laboratory Medicine*, vol. 41, pp. 1467–1472, 2003.
- [39] E. Schepers, G. Glorieux, A. Dhondt, L. Leybaert, and R. Vanholder, "Role of symmetric dimethylarginine in vascular damage by increasing ROS via store-operated calcium influx in monocytes," *Nephrology Dialysis Transplantation*, vol. 24, no. 5, pp. 1429–1435, 2009.
- [40] G. Altarescu, D. F. Moore, R. Pursley et al., "Enhanced endothelium-dependent vasodilation in Fabry disease," *Stroke*, vol. 32, no. 7, pp. 1559–1562, 2001.
- [41] D. Sorriento and G. Iaccarino, "The cardiovascular phenotype in Fabry disease: new findings in the research field," *International Journal of Molecular Sciences*, vol. 22, no. 3, p. 1331, 2021.
- [42] A. Frustaci, M. Scarpa, R. Maria da Riol et al., "Fabry cardiomyopathy: Gb3-induced auto-reactive panmyocarditis requiring heart transplantation," *ESC Heart Failure*, vol. 7, no. 3, pp. 1331–1337, 2020.
- [43] M. Pieroni, J. C. Moon, E. Arbustini et al., "Cardiac involvement in Fabry disease: JACC review topic of the week," *Journal of the American College of Cardiology*, vol. 77, no. 7, pp. 922–936, 2021.
- [44] C. Simoncini, L. Chico, D. Concolino et al., "Mitochondrial DNA haplogroups may influence Fabry disease phenotype," *Neuroscience Letters*, vol. 629, pp. 58–61, 2016.
- [45] L. Spinelli, T. Pellegrino, A. Pisani et al., "Relationship between left ventricular diastolic function and myocardial sympathetic denervation measured by 123I-meta-iodobenzylguanidine imaging in Anderson-Fabry disease," *European Journal of Nuclear Medicine and Molecular Imaging*, vol. 43, no. 4, pp. 729–739, 2016.
- [46] G. Santulli and G. Iaccarino, "Adrenergic signaling in heart failure and cardiovascular aging," *Maturitas*, vol. 93, pp. 65–72, 2016.
- [47] R. J. Desnick and E. H. Schuchman, "Enzyme replacement therapy for lysosomal diseases: lessons from 20 years of experience and remaining challenges," *Annual Review of Genomics and Human Genetics*, vol. 13, no. 1, pp. 307–335, 2012.
- [48] D. P. Germain, P. M. Elliott, B. Falissard et al., "The effect of enzyme replacement therapy on clinical outcomes in male patients with Fabry disease: a systematic literature review by a European panel of experts," *Molecular Genetics and Metabolism Reports*, vol. 19, p. 100454, 2019.
- [49] S. Sestito, F. Ceravolo, F. Falvo et al., "Pathobiological insights into the newly targeted therapies of lysosomal storage disorders," *Journal of Pediatric Biochemistry*, vol. 6, no. 1, pp. 30–38, 2016.
- [50] R. El Dib, H. Gomma, R. P. Carvalho et al., "Enzyme replacement therapy for Anderson-Fabry disease," *Cochrane Database of Systematic Reviews*, vol. 7, p. CD006663, 2016.
- [51] S. Sheng, L. Wu, K. Nalleballe et al., "Fabry's disease and stroke: effectiveness of enzyme replacement therapy (ERT) in

- stroke prevention, a review with meta-analysis," *Journal of Clinical Neuroscience*, vol. 65, pp. 83–86, 2019.
- [52] W. R. Wilcox, M. Banikazemi, N. Guffon et al., "Long-term safety and efficacy of enzyme replacement therapy for Fabry disease," *The American Journal of Human Genetics*, vol. 75, no. 1, pp. 65–74, 2004.
- [53] D. P. Germain, S. Waldek, M. Banikazemi et al., "Sustained, long-term renal stabilization after 54 months of agalsidase β therapy in patients with Fabry disease," *Journal of the American Society of Nephrology*, vol. 18, no. 5, pp. 1547–1557, 2007.
- [54] D. P. Germain, F. Weidemann, A. Abiose et al., "Analysis of left ventricular mass in untreated men and in men treated with agalsidase- β : data from the Fabry registry," *Genetics in Medicine*, vol. 15, no. 12, pp. 958–965, 2013.
- [55] D. G. Warnock, A. Ortiz, M. Mauer et al., "Renal outcomes of agalsidase beta treatment for Fabry disease: role of proteinuria and timing of treatment initiation," *Nephrology Dialysis Transplantation*, vol. 27, no. 3, pp. 1042–1049, 2012.
- [56] D. P. Germain, J. Charrow, R. J. Desnick et al., "Ten-year outcome of enzyme replacement therapy with agalsidase beta in patients with Fabry disease," *Journal of Medical Genetics*, vol. 52, no. 5, pp. 353–358, 2015.
- [57] F. Weidemann, M. Niemann, F. Breunig et al., "Long-term effects of enzyme replacement therapy on fabry cardiomyopathy: evidence for a better outcome with early treatment," *Circulation*, vol. 119, no. 4, pp. 524–529, 2009.
- [58] J. H. Kim, B. H. Lee, J. Hyang Cho et al., "Long-term enzyme replacement therapy for Fabry disease: efficacy and unmet needs in cardiac and renal outcomes," *Journal of Human Genetics*, vol. 61, no. 11, pp. 923–929, 2016.
- [59] M. Banikazemi, J. Bultas, S. Waldek et al., "Agalsidase-beta therapy for advanced Fabry disease: a randomized trial," *Annals of Internal Medicine*, vol. 146, no. 2, pp. 77–86, 2007.
- [60] R. J. Hopkin, G. Cabrera, J. Charrow et al., "Risk factors for severe clinical events in male and female patients with Fabry disease treated with agalsidase beta enzyme replacement therapy: data from the Fabry registry," *Molecular Genetics and Metabolism*, vol. 119, no. 1–2, pp. 151–159, 2016.
- [61] A. Ortiz, A. Abiose, D. G. Bichet et al., "Time to treatment benefit for adult patients with Fabry disease receiving agalsidase β : data from the Fabry registry," *Journal of Medical Genetics*, vol. 53, no. 7, pp. 495–502, 2016.
- [62] S. M. Rombach, J. M. F. G. Aerts, B. J. H. M. Poorthuis et al., "Long-term effect of antibodies against infused alpha-galactosidase A in Fabry disease on plasma and urinary (lyso) Gb3 reduction and treatment outcome," *PLoS One*, vol. 7, p. e47805, 2012.
- [63] M. J. van Breemen, S. M. Rombach, N. Dekker et al., "Reduction of elevated plasma globotriaosylsphingosine in patients with classic Fabry disease following enzyme replacement therapy," *Biochimica et Biophysica Acta (BBA)-Molecular Basis of Disease*, vol. 1812, no. 1, pp. 70–76, 2011.
- [64] L. Golán, O. Goker-Alpan, M. Holida et al., "Evaluation of the efficacy and safety of three dosing regimens of agalsidase alfa enzyme replacement therapy in adults with Fabry disease," *Drug Design, Development and Therapy*, vol. 9, pp. 3435–3444, 2015.
- [65] R. Schiffmann, C. Swift, X. Wang, D. Blankenship, and M. Ries, "A prospective 10-year study of individualized, intensified enzyme replacement therapy in advanced Fabry disease," *Journal of Inherited Metabolic Disease*, vol. 38, no. 6, pp. 1129–1136, 2015.
- [66] B. E. Smid, S. M. Rombach, J. M. Aerts et al., "Consequences of a global enzyme shortage of agalsidase beta in adult Dutch Fabry patients," *Orphanet Journal of Rare Diseases*, vol. 6, no. 1, p. 69, 2011.
- [67] M. Lenders, S. Canaan-Kühl, J. Krämer et al., "Patients with Fabry disease after enzyme replacement therapy dose reduction and switch-2-year follow-up," *Journal of the American Society of Nephrology*, vol. 27, no. 3, pp. 952–962, 2016.
- [68] J.-C. Lubanda, E. Anijalg, V. Bzdúch, B. L. Thurberg, B. Bénichou, and A. Tylki-Szymanska, "Evaluation of a low dose, after a standard therapeutic dose, of agalsidase beta during enzyme replacement therapy in patients with Fabry disease," *Genetics in Medicine*, vol. 11, no. 4, pp. 256–264, 2009.
- [69] M. Arends, M. Biegstraaten, C. Wanner et al., "Agalsidase alfa versus agalsidase beta for the treatment of Fabry disease: an international cohort study," *Journal of Medical Genetics*, vol. 55, no. 5, pp. 351–358, 2018.
- [70] O. Goker-Alpan, K. Nedd, S. P. Shankar et al., "Effect and tolerability of agalsidase alfa in patients with Fabry disease who were treatment naïve or formerly treated with agalsidase beta or agalsidase alfa," *JIMD Reports*, vol. 23, pp. 7–15, 2015.
- [71] F. DeRosa, L. Smith, Y. Shen et al., "Improved efficacy in a Fabry disease model using a systemic mRNA liver depot system as compared to enzyme replacement therapy," *Molecular Therapy*, vol. 27, no. 4, pp. 878–889, 2019.
- [72] D. P. Germain and J.-Q. Fan, "Pharmacological chaperone therapy by active-site-specific chaperones in Fabry disease: in vitro and preclinical studies," *International Journal of Clinical Pharmacology and Therapeutics*, vol. 47, no. 1, pp. S111–S117, 2009.
- [73] D. A. Hughes, K. Nicholls, S. P. Shankar et al., "Oral pharmacological chaperone migalastat compared with enzyme replacement therapy in Fabry disease: 18-month results from the randomised phase III ATTRACT study," *Journal of Medical Genetics*, vol. 54, no. 4, pp. 288–296, 2017.
- [74] R. Schiffmann, O. Goker-Alpan, M. Holida et al., "Pegunigalsidase alfa, a novel PEGylated enzyme replacement therapy for Fabry disease, provides sustained plasma concentrations and favorable pharmacodynamics: a 1-year phase 1/2 clinical trial," *Journal of Inherited Metabolic Disease*, vol. 42, no. 3, pp. 534–544, 2019.
- [75] N. Guérard, D. Oder, P. Nordbeck et al., "Lucerastat, an iminosugar for substrate reduction therapy: tolerability, pharmacodynamics, and pharmacokinetics in patients with Fabry disease on enzyme replacement," *Clinical Pharmacology & Therapeutics*, vol. 103, no. 4, pp. 703–711, 2018.
- [76] N. Pacienza, M. Yoshimitsu, N. Mizue et al., "Lentivector transduction improves outcomes over transplantation of human HSCs alone in NOD/SCID/Fabry mice," *Molecular Therapy*, vol. 20, no. 7, pp. 1454–1461, 2012.
- [77] M. Yoshimitsu, T. Sato, K. Tao et al., "Bioluminescent imaging of a marking transgene and correction of Fabry mice by neonatal injection of recombinant lentiviral vectors," *Proceedings of the National Academy of Sciences*, vol. 101, no. 48, pp. 16909–16914, 2004.
- [78] J.-O. Choi, M. Lee, H.-Y. Park, and S.-C. Jung, "Characterization of Fabry mice treated with recombinant adeno-associated virus 2/8-mediated gene transfer," *Journal of Biomedical Science*, vol. 17, no. 1, p. 26, 2010.
- [79] "Autologous stem cell transplantation of cells engineered to express alpha-galactosidase A in patients with Fabry disease," 2019, <https://clinicaltrials.gov/ct2/show/NCT02800070>.

- [80] A. Khan, D. L. Barber, J. Huang et al., “Lentivirus-mediated gene therapy for Fabry disease,” *Nature Communications*, vol. 12, p. 1178, 2021.
- [81] “A Fabry disease gene therapy study,” 2019, <https://clinicaltrials.gov/ct2/show/NCT04040049>.
- [82] X. Zhu, L. Yin, M. Theisen et al., “Systemic mRNA therapy for the treatment of Fabry disease: preclinical studies in wild-type mice, fabry mouse model, and wild-type non-human primates,” *The American Journal of Human Genetics*, vol. 104, no. 4, pp. 625–637, 2019.
- [83] U.S. Food and Drug Administration, *FDA Approves New Treatment for a Rare Genetic Disorder, Fabry Disease*, U.S. Food and Drug Administration, Silver Spring, MD, USA, 2018, <http://www.fda.gov/news-events/press-announcements/fda-approves-new-treatment-rare-genetic-disorder-fabry-disease>.
- [84] R. J. Desnick, “Fabry disease, an under-recognized multi-systemic disorder: expert recommendations for diagnosis, management, and enzyme replacement therapy,” *Annals of Internal Medicine*, vol. 138, no. 4, pp. 338–346, 2003.
- [85] C. A. Stamera, M. De Feo, V. Castelli et al., “Effects of agalsidase- β administration on vascular function and blood pressure in familial Anderson-Fabry disease,” *European Journal of Human Genetics*, vol. 29, no. 2, pp. 218–224, 2020.