



■ RESEARCH

Cytotoxicity and genotoxicity in liver cells induced by cobalt nanoparticles and ions

Y. K. Liu,
X. X. Deng,
H.L. Yang

The Affiliated Hospital
to Soochow University,
Jiangsu, China

Objectives

The cytotoxicity induced by cobalt ions (Co^{2+}) and cobalt nanoparticles (Co-NPs) which released following the insertion of a total hip prosthesis, has been reported. However, little is known about the underlying mechanisms. In this study, we investigate the toxic effect of Co^{2+} and Co-NPs on liver cells, and explain further the potential mechanisms.

Methods

Co-NPs were characterised for size, shape, elemental analysis, and hydrodynamic diameter, and were assessed by Transmission Electron Microscope, Scanning Electron Microscope, Energy Dispersive X-ray Spectroscopy and Dynamic Light Scattering. BRL-3A cells were used in this study. Cytotoxicity was evaluated by MTT and lactate dehydrogenase release assay. In order to clarify the potential mechanisms, reactive oxygen species, Bax/Bcl-2 mRNA expression, IL-8 mRNA expression and DNA damage were assessed on BRL-3A cells after Co^{2+} or Co-NPs treatment.

Results

Results showed cytotoxic effects of Co^{2+} and Co-NPs were dependent upon time and dosage, and the cytotoxicity of Co-NPs was greater than that of Co^{2+} . In addition, Co-NPs elicited a significant ($p < 0.05$) reduction in cell viability with a concomitant increase in lactic dehydrogenase release, reactive oxygen species generation, IL-8 mRNA expression, Bax/Bcl-2 mRNA expression and DNA damage after 24 hours of exposure.

Conclusion

Co-NPs induced greater cytotoxicity and genotoxicity in BRL-3A cells than Co^{2+} . Cell membrane damage, oxidative stress, immune inflammation and DNA damage may play an important role in the effects of Co-NPs on liver cells.

Cite this article: *Bone Joint Res* 2016;5:461–469

Keywords: Co-NPs; Cytotoxicity; Oxidative stress; DNA damage

■ Y. K. Liu, MD, Attending Physician,
■ H.L. Yang, PhD, Professor, Department of Orthopaedics, The Affiliated Hospital to Soochow University, Jiangsu, China.
■ X. X. Deng, MD, Student, The Affiliated Hospital to Nantong University, Jiangsu, China.

Correspondence should be sent to Dr H. L. Yang;
email: yanghuiin912@163.com

doi: 10.1302/2046-3758.510.
BJR-2016-0016.R1

Bone Joint Res 2016;5:461–469.

Received: 31 January 2016;

Accepted: 4 July 2016

Article focus

- Cobalt chrome (CoCr) metal-on-metal (MOM) total hip arthroplasties have recently been in clinical use.
- It has been reported that metal debris can incorporate into the periprosthetic tissue or enter the bloodstream.
- The objectives of this study were to evaluate the effects of cobalt ions (Co^{2+}) or cobalt nanoparticles (Co-NPs) on liver cells and to clarify the potential mechanisms of these effects.

Key messages

- Co-NPs induced significantly greater production of intracellular ROS than

Co^{2+} on normal liver cells after 24 hours of exposure.

- The Bax/Bcl-2 ratio was increased dose dependently in BRL-3A cells with Co^{2+} and Co-NPs treatment.
- Co-NPs may correlate with DNA damage.

Strengths and limitations

- There were insufficient data available to explain the relation between ROS and the Bcl-2 family, and further studies are necessary to evaluate the relevance between them.
- Future research should focus on clinically relevant experimental research *in vivo*.

Introduction

Cobalt chrome (CoCr) metal-on-metal (MoM) total hip arthroplasties (THA) have been widely used in clinical practice. Compared with metal-on-polyethylene (MoP) bearings, MoM THAs demonstrated lower rates of wear, reducing wear-induced osteolysis as the main cause of loosening of prostheses.¹ Because of low wear, the prostheses were primarily selected for younger and more active patients.² Whilst numerous studies demonstrated that MoM THAs released a large amount of very small wear particles and metal ions, the number of particles was up to 500 times higher than the MoP bearings.³ Particles have been reported to be smaller than 50 nm in size.⁴ Once the diameter of non-toxic or toxic materials reaches nanoscale, the nature of the biological effects may change.⁵

It has been reported that metal debris can incorporate into the periprosthetic tissue or enter the bloodstream,⁶ and patients may have higher blood cobalt and chromium concentrations than normal.⁷ Metal particles and ions gathered into the periprosthetic tissue may induce inflammatory reactions and create masses of soft-tissue and fluid collections. This could potentially lead to tissue necrosis and osteolysis.⁸⁻¹³ Several reports showed that patients with elevated cobalt and/or chromium concentrations in blood, serum or plasma presented serious systemic symptoms including neurological conditions, cardiomyopathy and hypothyroidism.¹⁴⁻²¹

Cobalt ions (Co²⁺) and cobalt nanoparticles (Co-NPs) were identified as the important degradation products of MoM THA.²² Recently, the biological effects of CoCr nanoparticles and ions on macrophages demonstrated that only Co-NPs (30 nm) exhibited cytotoxicity *in vitro* relative to Cr-NPs (30 nm).²³ However, there was a definite lack of information on the toxicity and the mechanisms of Co²⁺ or Co-NPs on liver cells. Therefore, in this study, we evaluated the effects of Co²⁺ and Co-NPs on liver cells and attempted to determine the probable potential mechanisms.

Materials and Methods

Materials. The rat liver cell line, BRL-3A, was obtained from the Shanghai Cell Bank at the Chinese Academy of Sciences. CoCl₂·6H₂O, Co-NPs, dimethyl sulfoxide (DMSO), DCFH-DA (2', 7'-Dichlorofluorescein diacetate), TRIZOL and MTT (3-(4, 5-dimethylthiazol-2-yl)-2, 5-diphenyltetrazolium bromide) were obtained from Sigma-Aldrich (St. Louis, Missouri). Co²⁺ was prepared at a concentration of 10 mM using ultrapure water and sterilised using a 0.22 µm filter (Merck Millipore, Darmstadt, Germany). In each experiment, the stock solutions were freshly diluted with a culture medium to the test concentrations. Co-NPs (30 nm to 70 nm, with a median size of 50 nm) samples were heat sterilised (180°C, four hours) and then suspended in ultrapure water at a concentration of 100 mM. The stock solutions

were sonicated intermittently six times for two minutes and freshly diluted with a culture medium to the test concentrations. According to other studies^{24,25} and our pilot experiments (data not shown), the concentrations of Co²⁺ and Co-NPs used in this study were 0 µM to 500 µM. Dulbecco's Modified Eagle's medium (DMEM), fetal bovine serum (FBS), trypsin-EDTA and penicillin/streptomycin were purchased from Invitrogen Ltd (Paisley, United Kingdom). Tissue culture dishes were obtained from Corning Inc. (New York, New York).

Physicochemical characterisation of Co-NPs. Co-NPs were characterised for size, shape and hydrodynamic diameter. The size, microstructure and elemental composition of Co-NPs were assessed by high-resolution scanning electron microscopy (SEM), transmission electron microscopy (TEM) and energy dispersive X-ray spectroscopy (EDS). In brief, Co-NPs were suspended in DMEM supplemented with 5% FBS at a concentration of one mg/mL (pH 7.2 to 7.4), then the sample was sonicated by using a sonicator bath until a homogeneous suspension formed. A drop of aqueous Co-NPs suspension was placed onto a carbon-coated copper grid and air-dried to obtain SEM and TEM images. EDS was employed for elemental analysis. Dynamic laser light scattering (DLS) measurements were used to determine the hydrodynamic diameter and size distribution of Co nanoparticles in the cell culture medium.

Cell preparation. Frozen BRL-3A cells were thawed, mixed with 10 mL culture medium, and centrifuged at 1000 rpm/min for five minutes. The cells were mixed with DMEM supplemented with 10% FBS and 100 U/mL penicillin/streptomycin, blended into a single-cell suspension at a concentration of 5×10⁵ cells/mL. Cells were cultured at 37°C in a humidified incubator containing 5% CO₂ and 95% air.

Cell viability assay. The effect of Co²⁺ and Co-NPs on the viability of BRL-3A cells was evaluated using the MTT assay. Briefly, 5×10³ cells/well were plated into 96-well tissue culture plates and exposed to Co²⁺ and Co-NPs at varying concentrations (1 µM, 5 µM, 10 µM, 50 µM, 100 µM and 500 µM) for four, 24 and 48 hours. Culture medium served as the control in each experiment. Optical density was measured at 570 nm with a reference wavelength of 630 nm using a microplate reader. All experiments were performed in triplicate. Cell viability rates were shown as a percentage of the control. The 50% cytotoxic concentration (CC₅₀ value) was then calculated.

Lactose dehydrogenase (LDH) activity. LDH release was used as an indicator of cell membrane damage after 24 hours of exposure to Co²⁺ or Co-NPs at two concentrations (10 µM and 100 µM), LDH release was measured by an LDH assay kit (Beyotime Biotechnology, Shanghai, China) according to the manufacturer's protocol. The samples were assessed using a spectrophotometer. 0.01% Triton X-100 treatment for two minutes was used as a positive control.

Table 1. Quantitative real-time polymerase chain reaction primers

Primer	Forward (5'-3')	Reverse (5'-3')
Bcl-2	CCGGGAGATCGTGATGAAGT	ATCCGAGCTCCGTTATCCT
Bax	CCAAGAAGCTCGAGCGAGTGTC	TGAGGACTCCAGCCACAAGA
IL-8	AAGATTGTCCAAAAGATGCTAA	ATCGGTGAATCTATCTTCTTT
GAPDH	GGTATCGTGAAGGACTCATGAC	ATGCCAGTGAGCTTCCCCTTCAGC

Measurement of ROS accumulation. The production of intracellular reactive oxygen species (ROS) was measured by using 2', 7'-Dichlorofluorescein diacetate (DCFH-DA).²⁶ DCFH-DA passively enters the cell, where it reacts with ROS to form the highly fluorescent compound 2', 7'-dichlorofluorescein. Briefly, 10 mM DCFH-DA stock solution was diluted in culture medium without serum to yield a 10 μ M working solution. The cells in six-well plates were incubated for 24 hours, and then treated with Co²⁺ or Co-NPs for 24 hours. The culture medium was then removed and DCFH-DA was added at 37°C for 20 minutes. Cells were then washed three times with DMEM and the fluorescence was recorded at 480 nm/525 nm (excitation/emission) wavelengths. The intensity of fluorescence was measured by a fluorescence plate reader and by laser confocal microscopy. H₂O₂ (100 mM) was used as a positive control.

RNA Isolation and quantitative real-time polymerase chain reaction (PCR). Total RNA was extracted from the BRL-3A cells using the Trizol-based method. Approximately one μ g of total RNA was reverse-transcribed into first-strand cDNA using RevertAid First Strand cDNA Synthesis Kit (Thermo Fischer Scientific, Waltham, Massachusetts). The synthesised cDNA was used for quantitative real-time PCR and performed using UltraSYBR Mixture (With Rox) (ComWin Biotech Co., Ltd, Beijing, China), then analysed on an ABI 7500 Real-Time PCR System (Applied Biosystems, Foster City, California). All gene expression data are normalised to glyceraldehyde 3-phosphate dehydrogenase (GAPDH) expression levels. The reaction conditions were as follows: initial 94°C for 30 seconds, then 35 cycles of 94°C for five seconds, 58°C for 15 seconds, 72°C for ten seconds, and a final extension at 72°C for ten minutes. Specific primers are shown in Table 1.

Comet test. Co²⁺ and Co-NPs concentrations (10 μ M and 100 μ M) below CC₅₀ were selected to evaluate DNA damage in the following alkaline comet assay. The alkaline comet assay for assessment of primary DNA damage was performed according to the method described by Singh et al²⁷ with some modifications. Cells cultured in 24-well plates were exposed to Co²⁺ and Co-NPs for 24 hours, then washed with phosphate-buffered saline (PBS) and re-suspended in 0.5% low melting point agarose (LMPA) and located between a layer of 1% normal melting point agarose (NMPA) and a layer of 0.5% LMPA on microscope slides. Afterwards, the slides were immersed in cold fresh lysing solution (2.5 M NaCl, 100 mM Na₂EDTA, 10 mM Tris, 10% DMSO, 1% Triton X-100,

and 1% laurosylsarcosinate, pH ten) overnight. All procedures were performed under dim light. The next day, slides were incubated at 4°C in fresh alkaline buffer (0.3 M NaOH and 1 mM EDTA, pH 13) for 30 minutes and electrophoresed at 4°C for 20 minutes at 0.73 V/cm and approximately 300 mA. After electrophoresis, the slides were washed in neutralisation buffer (0.4 M Tris, pH 7.5), fixed with ethanol for three minutes, stained with propidium iodide (5 μ g/mL) and analysed using a fluorescent microscope (Olympus BX50; Olympus Corp., Tokyo, Japan). A total of 100 randomly selected cells were analysed by the CASP software.²⁸ DNA damage was evaluated by Olive tail moment and the percentage of DNA in the tail (%Tail DNA).

Statistical analysis. All experiments were performed in triplicate, and the data are shown as mean and standard deviation (SD) of three separate experiments. All statistical analysis were performed with Graphpad Prism software 5 (La Jolla, California) using one-way analysis of variance (ANOVA) followed by Dunnett's test to evaluate significance relative to control. The probability values of $p < 0.05$ were considered significant, and $p < 0.01$ was considered highly significant.

Results

Physicochemical characterisation of Co-NPs. The size and morphology of the Co-NPs were characterised by TEM and SEM. The TEM morphology (Fig. 1a) and the SEM morphology (Fig. 1b) of Co-NPs displayed a nearly spherical shape with a mean diameter of about 50 nm. EDS analysis was employed for elemental analysis (the point from Fig. 1b), confirming the presence of Co elements in Co-NPs (Fig. 1c). DLS measurements further confirmed the diameter of Co-NPs with a narrow size distribution (Fig. 1d).

Cytotoxicity of Co²⁺ and Co-NPs. MTT results demonstrated a time- and dose-dependent cytotoxicity of Co²⁺ and Co-NPs on BRL-3A cells (Fig. 2). The MTT assay was performed after treating BRL-3A cells with Co-NPs and Co²⁺ cells cultured in a medium alone as the control group. At the 100 μ M concentration, co-NPs showed significant toxicity after 24 hours of treatment (Fig. 2). MTT reduction was observed after four hours of exposure to Co²⁺ and Co-NPs at concentrations of 1 μ M, 5 μ M, 10 μ M, 50 μ M, 100 μ M and 500 μ M with reduction of 1.1%, 1.8%, 3.0%, 11.5%, 17.1%, 41.1% and 1.7%, 2.7%, 7.3%, 24.6%, 42.5%, 45.2%, respectively, with a further reduction to 2.1%, 4.5%, 6.3%, 15.4%, 27.6%,

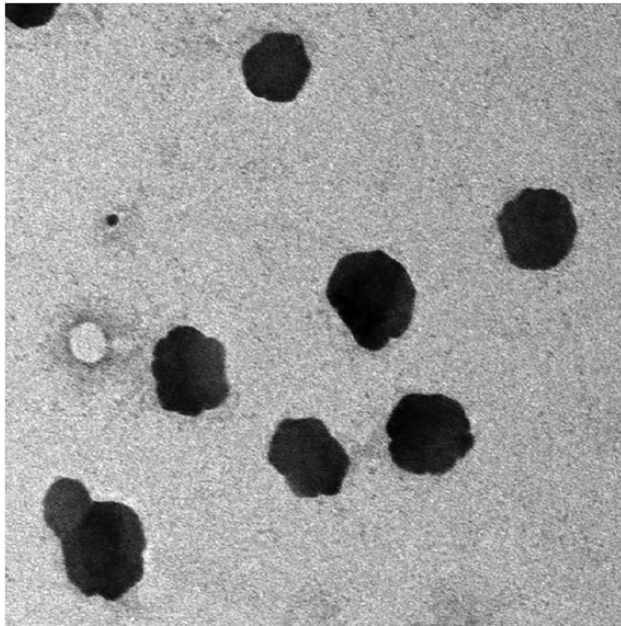


Fig. 1a

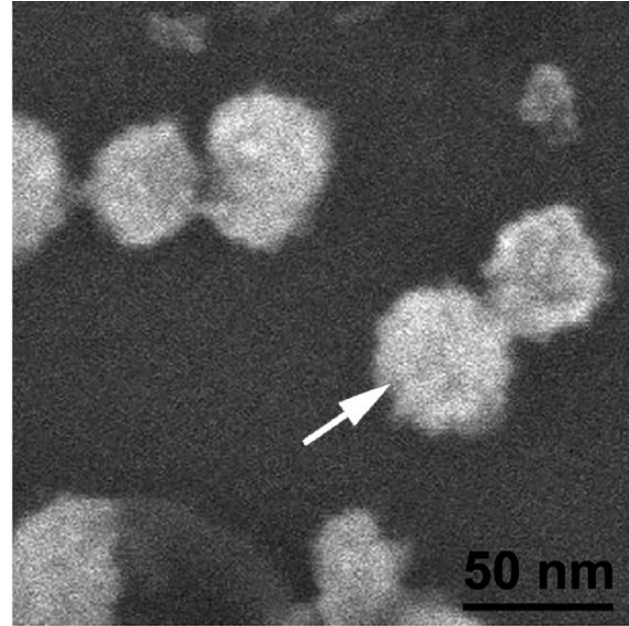


Fig. 1b

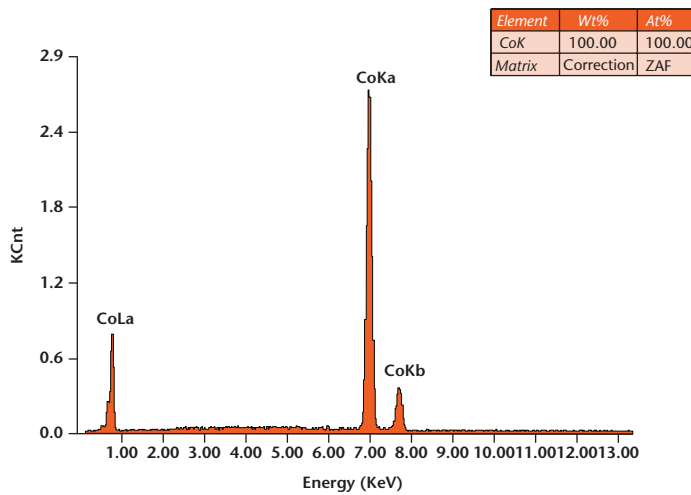


Fig. 1c

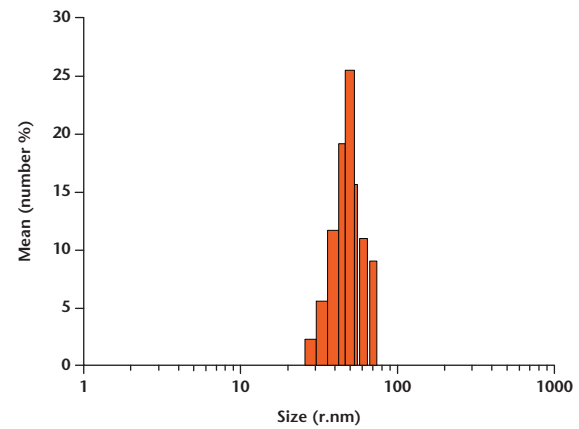


Fig. 1d

Fig. 1

Physicochemical properties of cobalt nanoparticles (Co-NPs). a) TEM micrograph of Co-NPs. Scale bar is 50 nm. b) SEM micrograph of Co-NPs. Scale bar is 50 nm. c) The EDS analysis of Co-NPs (the black arrow marker in b). d) Particle size distribution of Co-NPs.

52.9% and 3.7%, 5.9%, 18.0%, 38.1%, 56.8%, 74.1% after 24 hours of exposure. After 48 hours of exposure to Co^{2+} and Co-NPs, MTT reduced to 6.1%, 8.3%, 11.6%, 35.0%, 51.3%, 67.4% and 5.8%, 8.7%, 34.3%, 49.3%, 65.1%, 79%, respectively. The half-maximal inhibitory concentration of Co-NPs was 100 μM (after 24 hours of incubation).

Apoptosis or necrosis can cause the destruction of the cell membrane structure, leading to cell plasma lactate dehydrogenase (LDH) release. The cytotoxicity was further confirmed by measuring LDH release levels in cell culture medium with different concentrations of Co^{2+} or Co-NPs for 24 hours. The result showed that LDH release was

significantly induced by Co-NPs (Fig. 3), indicating that Co-NPs could lead to cell membrane damage.

Influence of Co^{2+} and Co-NPs on ROS production. The ability of Co^{2+} and Co-NPs to induce oxidative stress was evaluated by measuring the levels of ROS formation in BRL-3A cells (Fig. 4). Results showed that the Co-NPs significantly induced the intracellular production of ROS, compared with Co^{2+} , on normal liver cells after 24 hours of exposure. The levels of ROS were increased 2.17 and 3.84 times in normal liver cells compared with the control group at 10 μM and 100 μM (data not shown), respectively. No significant induction of cellular ROS production was seen according to different concentrations of Co^{2+} in this study.

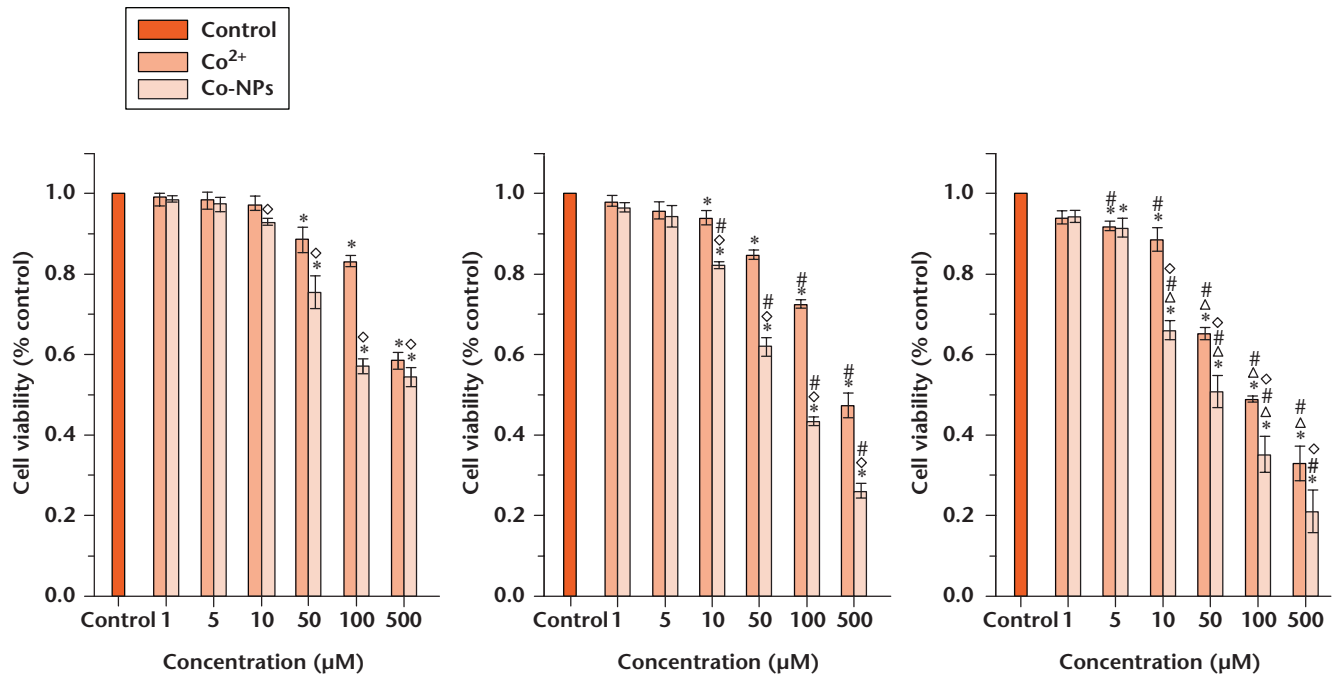


Fig. 2

Viability of BRL-3A exposed to cobalt ions (Co²⁺) and cobalt nanoparticles (Co-NPs) was determined by the MTT assay. BRL-3A cells were treated with Co²⁺ (0-500 μM) and Co-NPs (0-500 μM) for four, 24 and 48 hours (left to right). Co²⁺ and Co-NPs decreased cell viability in time- and dose-dependent manners. All data were expressed as mean and Standard deviation of three independent experiments performed in triplicate. *p < 0.05 compared with control; ◇ p < 0.05 compared with Co²⁺; # p < 0.05 compared with four hours; △ p < 0.05 compared with 24 hours.

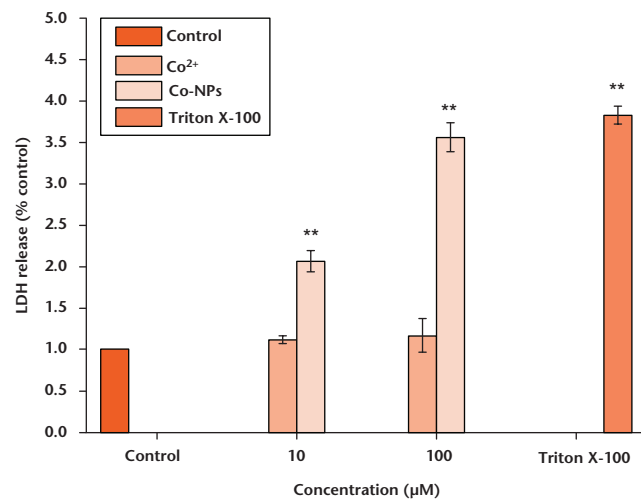


Fig. 3

The LDH level of BRL-3A cells incubated with different concentrations of cobalt ions (Co²⁺) and cobalt nanoparticles (Co-NPs) for 24 hours. All data were expressed as mean and standard deviation of three independent experiments performed in triplicate. **p < 0.01, compared with the control.

Effects of Co²⁺ and Co-NPs on expression of apoptotic gene mRNA expression in BRL-3A cells. In order to determine if Co²⁺ or Co-NPs induce apoptosis in BRL-3A cells, the mRNA expression of Bcl-2 and Bax were evaluated by quantitative real-time PCR analysis after 24-hour treatment with Co²⁺ or Co-NPs (10 μM, 100 μM). The ratio of Bax/Bcl-2 expression was determined because its ratio is significant for determining whether a cell underwent

apoptosis.²⁹ The Bax/Bcl-2 ratio was increased dose dependently in BRL-3A cells with Co²⁺ and Co-NPs treatment (Fig. 5).

Effect of Co²⁺ and Co-NPs on expression of IL-8 mRNA in BRL-3A cells. In this study, the expression of IL-8 mRNA was used to investigate the relationship between the effects induced by Co²⁺ or Co-NPs and the immune response. Compared with the control group, the expression of IL-8 mRNA significantly increased after treating the cells at concentrations of 10 μM and 100 μM Co-NPs for 24 hours (p < 0.01). After cells were treated with different concentrations of Co²⁺, the expression of IL-8 mRNA was only increased at high concentrations of Co²⁺ (100 μM) (p < 0.05); 10 μM Co²⁺ did not induce a significant increase of IL-8 mRNA expression in BRL-3A cells (Fig. 6).

DNA damage induced by the Co²⁺ and Co-NPs. The comet assay was carried out to investigate the effect of the exposure of Co²⁺ and Co-NPs on DNA strand breaks using BRL-3A cells. The nucleus in control cells appeared round (Fig. 7), similar to the low concentration Co²⁺ groups (10 μM), while the other groups showed an increase in DNA breakage (Fig. 7) compared with the control group. The percentage of DNA in comet tail (% Tail DNA) was used to evaluate DNA damage, which is recognised as informative and reliable in the measurement of DNA damage.^{30,31} A large tail was detected in the nucleus of each cell exposed to the Co-NPs groups (10, 100 μM) (data not shown). The results suggested that the Co-NPs may correlate with DNA damage.

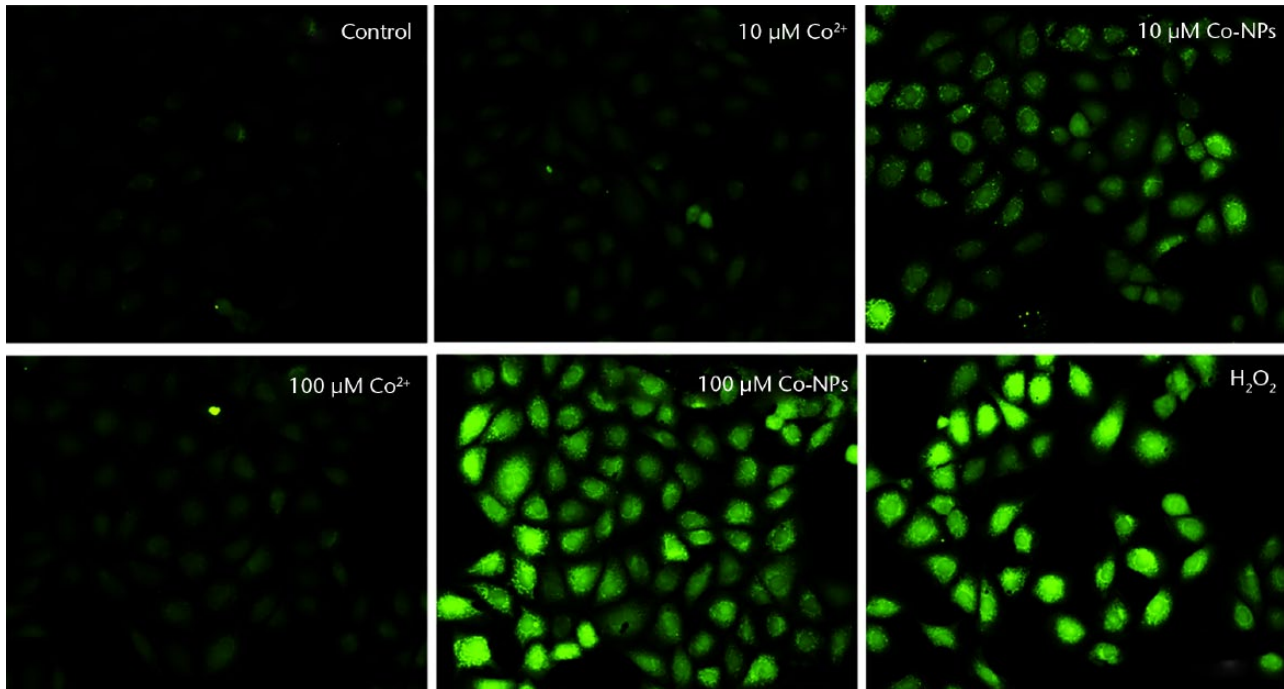


Fig. 4

Fluorescence microscopic picture of BRL-3A cells treated with different concentrations of cobalt ions (Co^{2+}) or cobalt nanoparticles (Co-NPs) and stained with DCFH-DA; 100 mM H_2O_2 was used as a positive control. Scale bar is 100 μm .

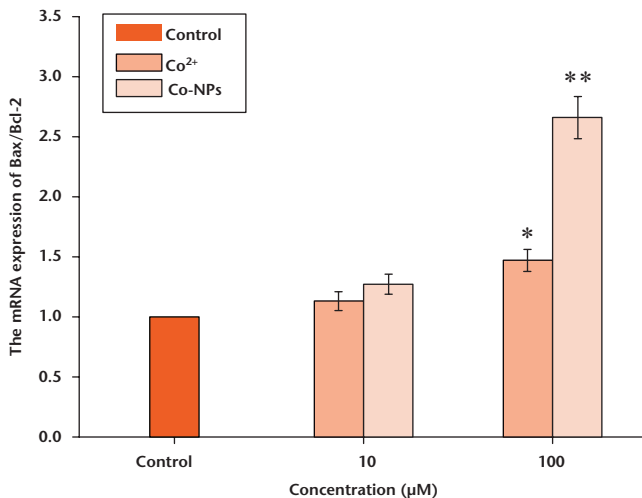


Fig. 5

The data were quantified by the ratio of Bax/Bcl-2 mRNA expression. Bax/Bcl-2 mRNA expression (index for apoptosis status) was only increased after cobalt nanoparticles (Co-NPs) exposed at concentrations of 10 μM and 100 μM for 24 hours. All data were expressed as mean and standard deviation of three independent experiments performed in triplicate. * $p < 0.05$, ** $p < 0.01$, compared with the control.

Discussion

With the development of the MoM bearing to THAs, the potential biological adverse effects of degradation products on human tissue has received significant attention. A recent study has demonstrated that Co^{2+} and Co-NPs induce time- and dose-dependent cytotoxicity. While it was unknown whether the release of Co^{2+}

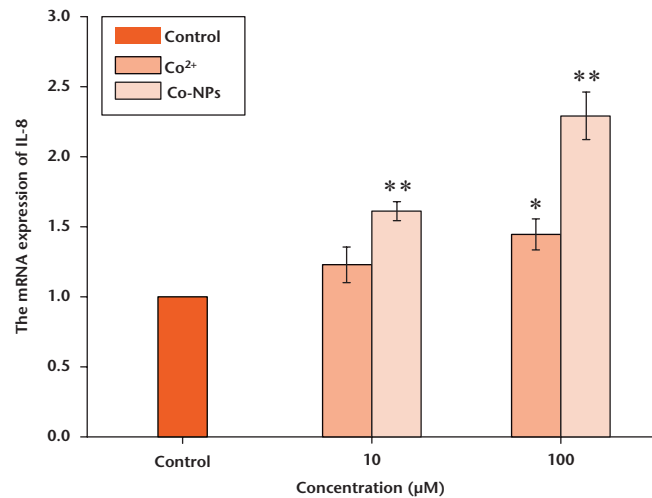


Fig. 6

The data were quantified by the ratio of IL-8 mRNA expression, IL-8 mRNA expression (index for pro-inflammatory status) was only increased after cobalt ions (Co^{2+}) exposed at concentrations of 100 μM for 24 hours. All data were expressed as mean and standard deviation of three independent experiments performed in triplicate. * $p < 0.05$, ** $p < 0.01$, compared with the control.

originates from the prostheses, or by corrosion of wear particles, the mechanism of Co^{2+} cytotoxicity is understood in that oxidative stress plays an important role.¹⁶⁻¹⁹ Young-min Kwon et al²³ reported the potential toxicity of Co-NPs on macrophages, although Co^{2+} in the culture medium created by the corrosion of Co-NPs could not induce significant effects. This latter study

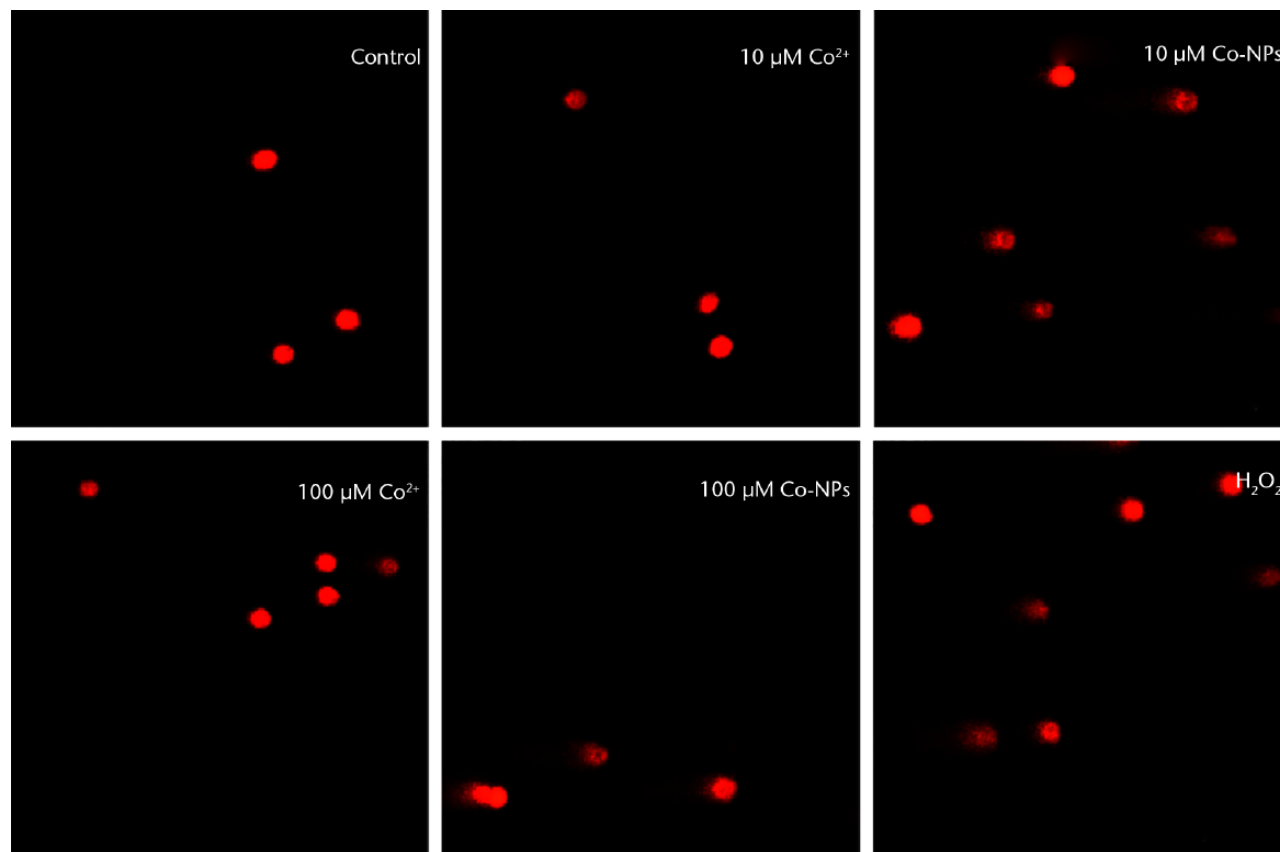


Fig. 7

DNA damage in BRL-3A after 24 hours of exposure to different concentrations of cobalt ions (Co^{2+}) or cobalt nanoparticles (Co-NPs). 100 mM H_2O_2 was used as a positive control. Scale bar is 50 μm .

suggested that the cytotoxicity of Co-NPs was more likely to be mediated predominantly by the co-NPs themselves, rather than the metal ions dissolved from the nanoparticles in the extracellular culture medium. Though the toxicity of Co^{2+} and Co-NPs was confirmed, the specific mechanism was not explained.

In this study, the normal liver cells (BRL-3A cells) were used to assess the biological effects of Co^{2+} and Co-NPs. Metal ions dissolved from CoCr-molybdenum (Mo) alloy accumulate in liver and kidney tissue because these organs are known to be involved in the excretion of many metals. Therefore, the kidney and liver are the major target organs for wear debris and metal ions.³² Other studies have shown that metal nanoparticles and ions could induce an excessive generation of ROS and cause cell death.^{33,34} Mitochondria are the main source of reactive oxygen species, and the liver cells contain more mitochondria than other cells.

This study indicated that Co^{2+} and Co-NPs induced a time- and dose-dependent cytotoxic effect on BRL-3A cells and the cytotoxic effects of Co-NPs were stronger than those of Co^{2+} . Our data further confirm that of the previous study on the cytotoxicity of Co^{2+} and Co-NP exposure to macrophages.²³ In addition, toxicity was also

demonstrated with the release of LDH, implying the effects of Co-NPs on cell membrane integrity. Figure 4 showed that Co-NPs significantly induced the intracellular production of ROS on BRL-3A cells. The finite amounts of ROS could enhance cell proliferation and differentiation,^{35,36} while the excessive amounts of ROS which disturb the oxidant/antioxidant balance could cause oxidative damage to lipids, proteins and DNA.^{37,38} The data suggest that Co-NPs induced DNA damage through generation of oxidative stress in BRL-3A cells.

The Bcl-2 family proteins contain anti-apoptotic proteins such as Bcl-2 and pro-apoptotic proteins such as Bax, and are the critical regulators of the mitochondrial apoptotic pathway. The Bcl-2 family proteins regulate cytochrome c release from the mitochondria into the cytosol. Bcl-2 proteins inhibit cytochrome c release by protecting permeability transition and stabilising the function of the outer mitochondrial membrane, whereas Bax proteins induce the release of cytochrome c³⁹⁻⁴¹. The ratio of the pro-apoptotic and anti-apoptotic Bcl-2 family (Bax/Bcl-2) is a key indicator of the release of cytochrome c from the mitochondria into the cytosol.⁴² Figure 5 showed that Co-NPs increased the ratio of Bax to Bcl-2 levels, and the results suggested that Co-NPs regulate

the permeability of the outer membrane of mitochondria through Bcl-2 family proteins, leading to the release of cytochrome c, and ultimately apoptosis of BRL-3A cells. However, it is interesting that the Bcl-2 family could also regulate the production of ROS.^{40,41} We speculate that this phenomenon occurred in normal amounts of ROS; excessive amounts of ROS would, conversely, inhibit the expression of Bcl-2 and improve the expression of Bax.

More importantly, our data show that Co²⁺ and Co-NPs induced a dose-dependent increase of IL-8. It has been reported that large amounts of lymphocytes and macrophages were observed in periprosthetic soft-tissue masses in the area of the hip joint.^{5-7,12} A previous study also found a significantly dose-dependent of cobalt oxide nanoparticles increase in pro-inflammatory cytokine TNF- α and a decrease in the anti-inflammatory cytokine IL-10.⁴³ Therefore, the results indicate that Co-NPs could induce an inflammatory response in BRL-3A cells.

In conclusion, this study suggests that Co²⁺ and Co-NPs could induce time- and dose-dependent cytotoxicity and genotoxicity in normal liver cells *in vitro*. The probable mechanisms of toxicity could be that Co²⁺ and Co-NPs induce adverse biological effects through the activation of the immune response, the generation of ROS and expression of the Bcl-2 family of proteins. However, there were insufficient data available to explain the relationship between ROS and the Bcl-2 family, and further studies would be necessary to evaluate the relationship between these two systems.

References

- MacDonald SJ, McCalden RW, Chess DG, et al. Metal-on-metal versus polyethylene in hip arthroplasty: a randomized clinical trial. *Clin Orthop Relat Res* 2003;406:282-296.
- Delaunay C. Second-generation metal bearings in cementless primary total hip arthroplasty: rationale, French homologation and preliminary results. *Rev Chir Orthop Reparatrice Appar Mot* 2000;86:809-824.
- Sieber HP, Rieker CB, Köttig P. Analysis of 118 second-generation metal-on-metal retrieved hip implants. *J Bone Joint Surg [Br]* 1999;81-B:46-50.
- Doorn PF, Campbell PA, Worrall J, et al. Metal wear particle characterization from metal on metal total hip replacements: transmission electron microscopy study of periprosthetic tissues and isolated particles. *J Biomed Mater Res* 1998;4:103-111.
- Park JS, Park YJ, Heo J. Solidification and recycling of incinerator bottom ash through the addition of colloidal silica (SiO₂) solution. *Waste Manag* 2007;27:1207-1212.
- Kop AM, Swarts E. Corrosion of a hip stem with a modular neck taper junction: a retrieval study of 16 cases. *J Arthroplasty* 2009;24:1019-1023.
- Back DL, Young DA, Shimmin AJ. How do serum cobalt and chromium levels change after metal-on-metal hip resurfacing? *Clin Orthop Relat Res* 2005;438:177-181.
- Hart AJ, Sabah S, Henckel J, et al. The painful metal-on-metal hip resurfacing. *J Bone Joint Surg [Br]* 2009;91-B:738-744.
- Mabilleau G, Kwon YM, Pandit H, et al. Metal-on-metal hip resurfacing arthroplasty: a review of periprosthetic biological reactions. *Acta Orthop* 2008;79:734-747.
- Mahendra G, Pandit H, Kliskey K, et al. Necrotic and inflammatory changes in metal-on-metal resurfacing hip arthroplasties. *Acta Orthop* 2009;80:653-659.
- Ollivier B, Darrah C, Barker T, et al. Early clinical failure of the Birmingham metal-on-metal hip resurfacing is associated with metallosis and soft-tissue necrosis. *J Bone Joint Surg [Br]* 2009;91-B:1025-1030.
- Pandit H, Glyn-Jones S, McLardy-Smith P, et al. Pseudotumours associated with metal-on-metal hip resurfacings. *J Bone Joint Surg [Br]* 2008;90-B:847-851.
- Willert HG, Buchhorn GH, Fayyazi A, et al. Metal-on-metal bearings and hypersensitivity in patients with artificial hip joints. A clinical and histomorphological study. *J Bone Joint Surg [Am]* 2005;87-A:28-36.
- Steens W, von Foerster G, Katzer A. Severe cobalt poisoning with loss of sight after ceramic-metal pairing in a hip—a case report. *Acta Orthop* 2006;77:830-832.
- Ikeda T, Takahashi K, Kabata T, et al. Polyneuropathy caused by cobalt-chromium metallosis after total hip replacement. *Muscle Nerve* 2010;42:140-143.
- Machado C, Appelbe A, Wood R. Arthroprosthetic cobaltism and cardiomyopathy. *Heart Lung Circ* 2012;21:759-760.
- Oldenburg M, Wegner R, Baur X. Severe cobalt intoxication due to prosthesis wear in repeated total hip arthroplasty. *J Arthroplasty* 2009; 24: 825.
- Pelclova D, Sklensky M, Janicek P, et al. Severe cobalt intoxication following hip replacement revision: clinical features and outcome. *Clin Toxicol (Phila)* 2012;50:262-265.
- Rizzetti MC, Liberini P, Zarattini G, et al. Loss of sight and sound. Could it be the hip? *Lancet* 2009;373:1052.
- Tower SS. Arthroprosthetic cobaltism: neurological and cardiac manifestations in two patients with metal-on-metal arthroplasty: a case report. *J Bone Joint Surg [Am]* 2010;92-A:2847-2851.
- Tower SS. Arthroprosthetic cobaltism associated with metal on metal hip implants. *BMJ* 2012;344:e430.
- Milosev I, Remskar M. In vivo production of nanosized metal wear debris formed by tribochemical reaction as confirmed by high-resolution TEM and XPS analyses. *J Biomed Mater Res A* 2009;91:1100-1110.
- Kwon YM, Xia Z, Glyn-Jones S, et al. Dose-dependent cytotoxicity of clinically relevant cobalt nanoparticles and ions on macrophages in vitro. *Biomed Mater* 2009;4:025018.
- Colognato R, Bonelli A, Ponti J, et al. Comparative genotoxicity of cobalt nanoparticles and ions on human peripheral leukocytes in vitro. *Mutagenesis* 2008;23:377-382.
- Ponti J, Sabbioni E, Munaro B, et al. Genotoxicity and morphological transformation induced by cobalt nanoparticles and cobalt chloride: an in vitro study in Balb/3T3 mouse fibroblasts. *Mutagenesis* 2009;24:439-445.
- Dash SK, Ghosh T, Roy S, et al. Zinc sulfide nanoparticles selectively induce cytotoxic and genotoxic effects on leukemic cells: involvement of reactive oxygen species and tumor necrosis factor alpha. *J Appl Toxicol* 2014;34:1130-1144.
- Singh NP, McCoy MT, Tice RR, et al. A simple technique for quantitation of low levels of DNA damage in individual cells. *Exp Cell Res* 1988;17:184-191.
- Końca K, Lankoff A, Banasik A, et al. A cross-platform public domain PC image-analysis program for the comet assay. *Mutat Res* 2003;534:15-20.
- Ozturk AM, Ergun MA, Demir T, et al. Ketamine is toxic to chondrocyte cell cultures. *Bone Joint J* 2014;96-B:989-994.
- Kumaravel TS, Jha AN. Reliable Comet assay measurements for detecting DNA damage induced by ionising radiation and chemicals. *Mutat Res* 2006;605:7-16.
- Olive PL, Durand RE. Heterogeneity in DNA damage using the comet assay. *Cytometry A* 2005;66:1-8.
- Jakobsen SS, Danscher G, Stoltenberg M, et al. Cobalt-chromium-molybdenum alloy causes metal accumulation and metallothionein up-regulation in rat liver and kidney. *Basic Clin Pharmacol Toxicol* 2007;101:441-446.
- Park EJ, Choi J, Park YK, et al. Oxidative stress induced by cerium oxide nanoparticles in cultured BEAS-2B cells. *Toxicology* 2008;245:90-100.
- Pulskamp K, Diabaté S, Krug HF. Carbon nanotubes show no sign of acute toxicity but induce intracellular reactive oxygen species in dependence on contaminants. *Toxicol Lett* 2007;168:58-74.
- Barrett EG, Johnston C, Oberdörster G, et al. Silica-induced chemokine expression in alveolar type II cells is mediated by TNF- α . *Am J Physiol* 1998;275:L1110-L1119.
- Barrett WC, DeGnore JP, Keng YF, et al. Roles of superoxide radical anion in signal transduction mediated by reversible regulation of protein-tyrosine phosphatase 1B. *J Biol Chem* 1999;274:34543-34546.
- Perry G, Raina AK, Nunomura A, et al. How important is oxidative damage? Lessons from Alzheimer's disease. *Free Radic Biol Med* 2000;28:831-834.
- Lanone S, Rogerieux F, Geys J, et al. Comparative toxicity of 24 manufactured nanoparticles in human alveolar epithelial and macrophage cell lines. *Part Fibre Toxicol* 2009;6:14.

39. **Howard S, Bottino C, Brooke S, et al.** Neuroprotective effects of bcl-2 overexpression in hippocampal cultures: interactions with pathways of oxidative damage. *J Neurochem* 2002;83:914-923.
40. **Gottlieb E, Vander Heiden MG, Thompson CB.** Bcl-x(L) prevents the initial decrease in mitochondrial membrane potential and subsequent reactive oxygen species production during tumor necrosis factor alpha-induced apoptosis. *Mol Cell Biol* 2000;20:5680-5689.
41. **Starkov AA, Polster BM, Fiskum G.** Regulation of hydrogen peroxide production by brain mitochondria by calcium and Bax. *J Neurochem* 2002;83:220-228.
42. **Lee JH, Choi SH, Baek MW, et al.** CoCl₂ induces apoptosis through the mitochondria- and death receptor-mediated pathway in the mouse embryonic stem cells. *Mol Cell Biochem* 2013;379:133-140.
43. **Chattopadhyay S, Dash SK, Tripathy S, et al.** Toxicity of cobalt oxide nanoparticles to normal cells; an in vitro and in vivo study. *Chem Biol Interact* 2015;226:58-71.

Funding Statement

- This study was supported by the National Natural Science Foundation of China (Ref. No. 81171743).

Author Contribution

- Y. K. Liu: Performed experiment, Analysed and interpreted data, Helped to design the study, Helped to write the paper
- X. X. Deng: Designed the study, Writing the paper, Performed experiment, Analysed and interpreted data
- H.L. Yang: Designed the study, Writing the manuscript.

ICMJE conflict of interest

- None declared.

© 2016 Yang et al. This is an open-access article distributed under the terms of the Creative Commons Attribution licence (CC-BY-NC), which permits unrestricted use, distribution, and reproduction in any medium, but not for commercial gain, provided the original author and source are credited.