

Supplementary Figures

Figure S1

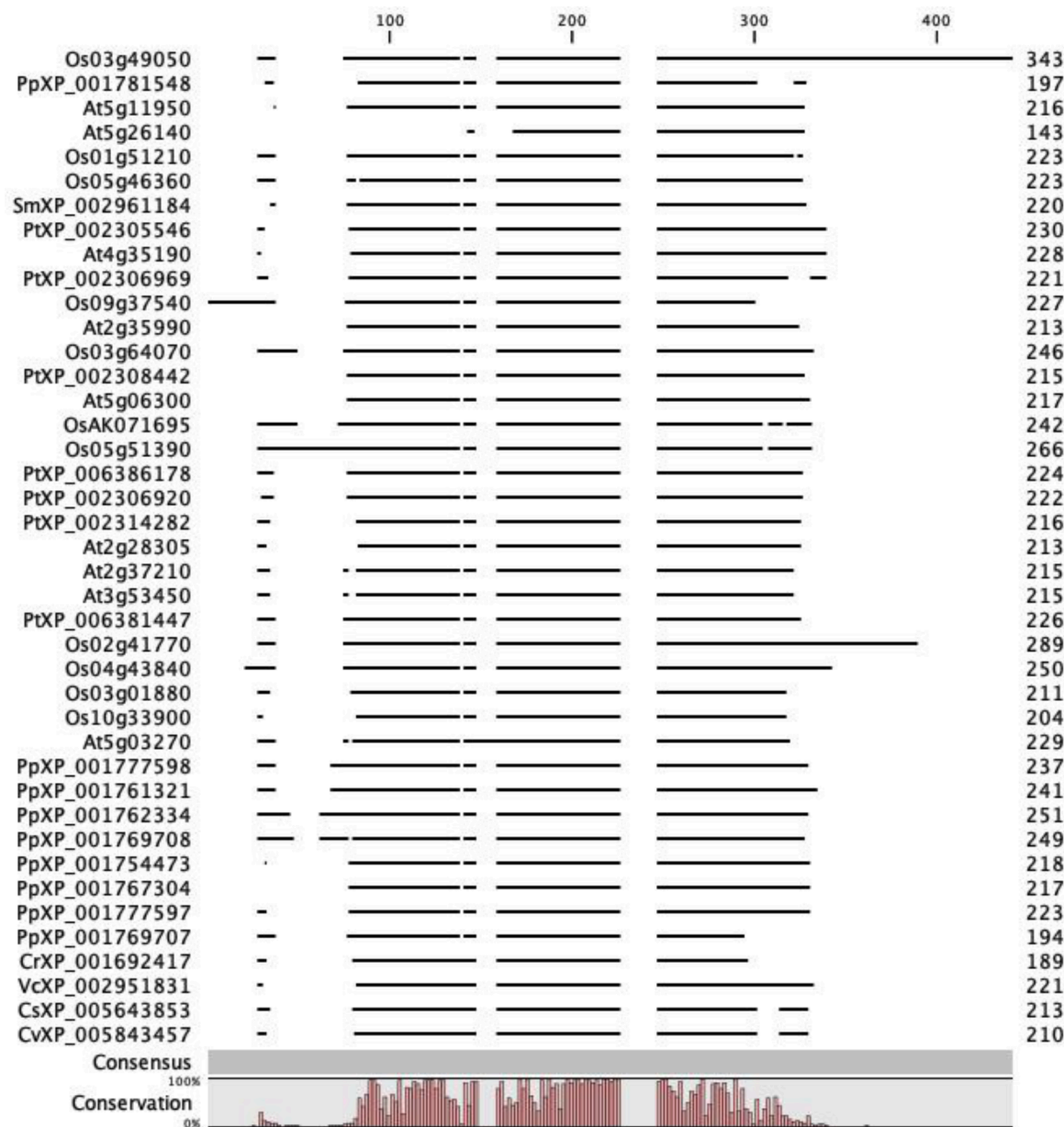


Fig. S1. Alignment of LOG proteins from different seed and non-seed plants

Figure S2

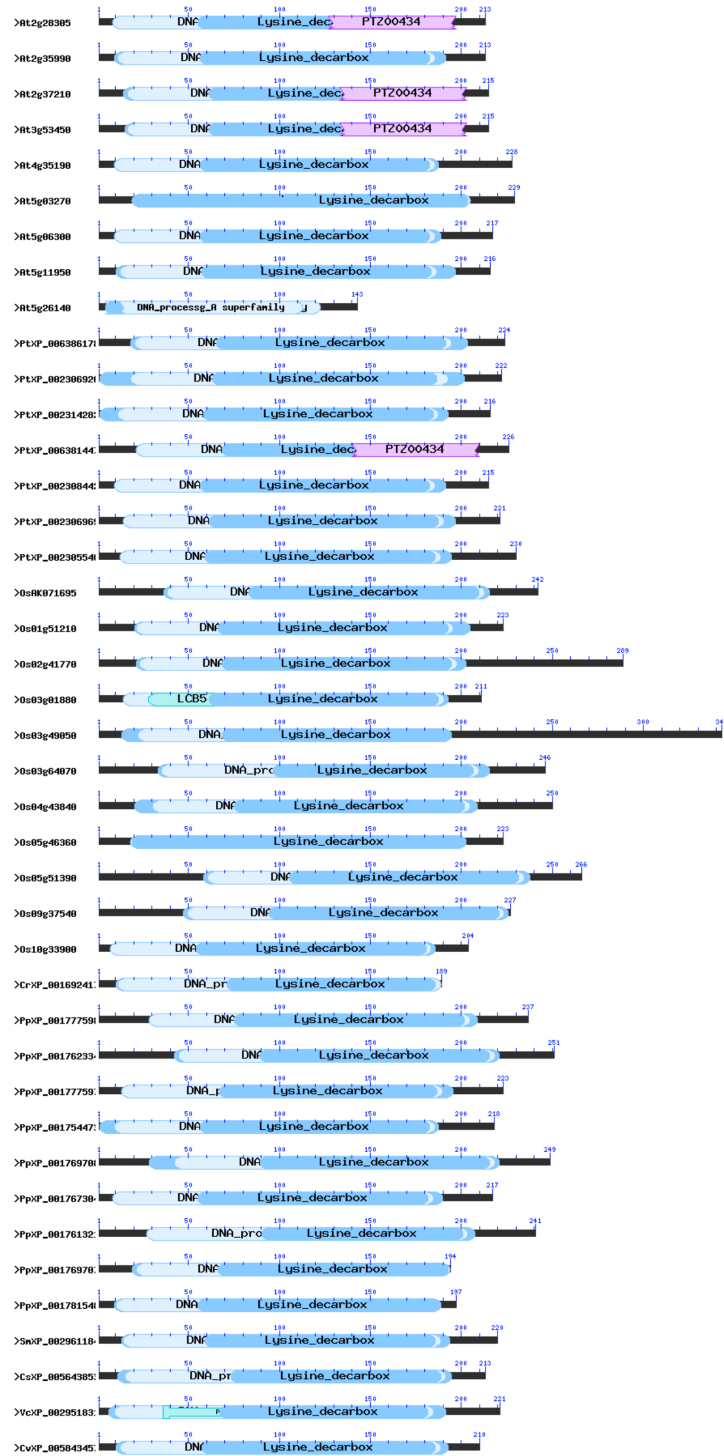


Fig. S2. Conserved domains of LOG proteins from non-seed and seed plants.

Figure S3

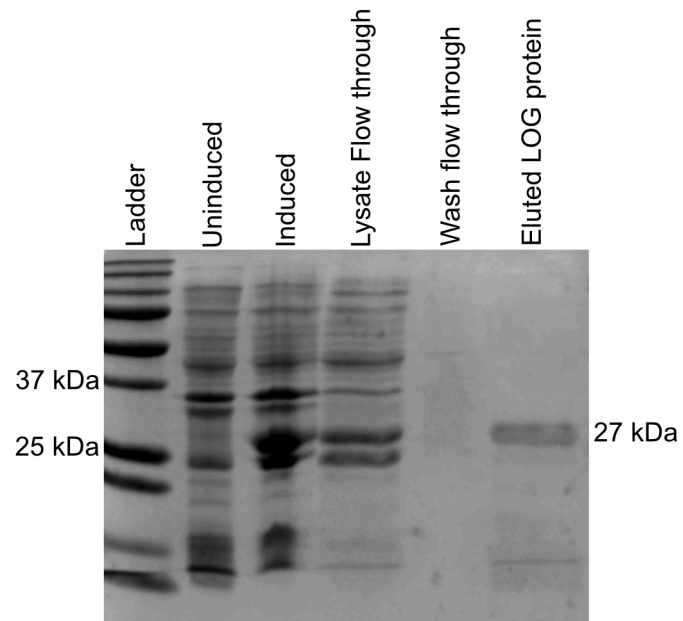


Fig. S3.SDS-PAGE of purified CvarLOG1 recombinant protein.

Figure S4

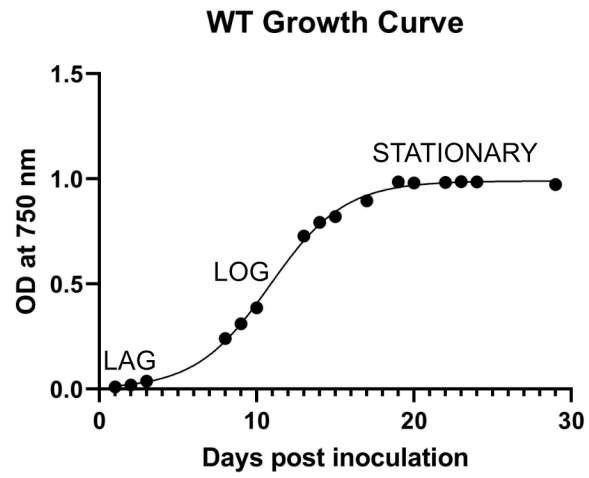


Fig. S4. Wild type growth curve from 1 dpi to 29 dpi (Optical Density at 750 nm)

Figure S5

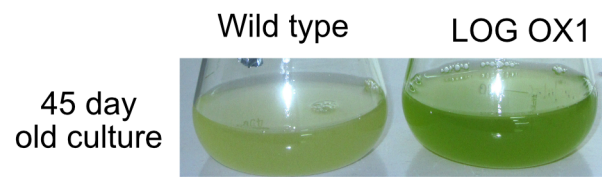


Fig. S5. Photograph of 45 dpi old culture of *LOG OX* versus wild type