



Crystal structure of 7-isopropyl-1,4a,*N*-trimethyl-1,2,3,4,4a,4b,5,6,7,8,10,10a-dodecahydrophenanthrene-1-carboxamide

Li Liu, Xin-Yan Yan and Xiao-Ping Rao*

Institute of Chemical Industry of Forest Products, Chinese Academy of Forestry, Key Laboratory of Biomass Energy and Material, Jiangsu Province, National Engineering Lab. for Biomass Chemical Utilization, Key and Lab. on Forest Chemical Engineering, SFA, Nanjing, 210042, People's Republic of China. *Correspondence e-mail: rxping2001@163.com

Received 17 September 2015; accepted 21 September 2015

Edited by E. R. T. Tiekink, University of Malaya, Malaysia

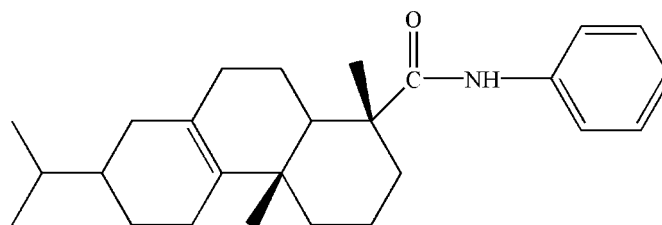
In the title compound, $C_{26}H_{37}NO$, a new derivative of dihydroabietic acid, the two cyclohexene rings adopt half chair conformations, whereas the cyclohexane ring has a chair conformation. Each of the methyl groups is in an axial position with respect to the tricyclic hydrophenanthrene residue. In the crystal packing, methylene-C—H $\cdots\pi$ (phenyl) interactions lead to supramolecular helical chains along [010]; the amide-H atom does not form a significant intermolecular interaction owing to steric pressure.

Keywords: crystal structure; dihydroabietic acid derivative; C—H $\cdots\pi$ interactions.

CCDC reference: 1426243

1. Related literature

For crystal structure of dihydroabietic acid derivatives, see: Rao *et al.* (2009); Rao (2010). For the biological activity of rosin acid derivatives, see: Fonseca *et al.* (2004); González *et al.* (2010); Rao *et al.* (2008); Sepulveda *et al.* (2005); Xing *et al.* (2013).



2. Experimental

2.1. Crystal data

$C_{26}H_{37}NO$	$V = 2251.0 (8) \text{ \AA}^3$
$M_r = 379.57$	$Z = 4$
Orthorhombic, $P2_12_12_1$	Mo $K\alpha$ radiation
$a = 26.223 (5) \text{ \AA}$	$\mu = 0.07 \text{ mm}^{-1}$
$b = 5.9230 (12) \text{ \AA}$	$T = 293 \text{ K}$
$c = 14.493 (3) \text{ \AA}$	$0.20 \times 0.20 \times 0.10 \text{ mm}$

2.2. Data collection

Enraf–Nonius CAD-4 diffractometer	4122 independent reflections
Absorption correction: ψ scan (<i>CAD-4 Software</i> ; Enraf–Nonius, 1985)	2080 reflections with $I > 2\sigma(I)$
$T_{\min} = 0.987$, $T_{\max} = 0.993$	$R_{\text{int}} = 0.099$
4707 measured reflections	3 standard reflections every 200 reflections
	intensity decay: 1%

2.3. Refinement

$R[F^2 > 2\sigma(F^2)] = 0.079$	254 parameters
$wR(F^2) = 0.193$	H-atom parameters constrained
$S = 1.01$	$\Delta\rho_{\max} = 0.21 \text{ e \AA}^{-3}$
4122 reflections	$\Delta\rho_{\min} = -0.30 \text{ e \AA}^{-3}$

Table 1

Hydrogen-bond geometry (\AA , $^\circ$).

$Cg1$ is the centroid of the C21–C26 ring.

$D-H\cdots A$	$D-H$	$H\cdots A$	$D\cdots A$	$D-H\cdots A$
$C3-H3A\cdots Cg1^i$	0.97	2.82	3.705 (5)	151

Symmetry code: (i) $x + \frac{1}{2}, -y - \frac{1}{2}, -z$.

Data collection: *CAD-4 Software* (Enraf–Nonius, 1985); cell refinement: *CAD-4 Software*; data reduction: *XCAD4* (Harms & Wocadlo, 1995); program(s) used to solve structure: *SHELXS97* (Sheldrick, 2008); program(s) used to refine structure: *SHELXL97* (Sheldrick, 2008); molecular graphics: *ORTEP-3 for Windows* (Farrugia, 2012); software used to prepare material for publication: *SHELXL97*.

Acknowledgements

This research was supported by a grant from the National Natural Science Foundation of China (31470596).

Supporting information for this paper is available from the IUCr electronic archives (Reference: TK5389).

References

- Enraf–Nonius (1985). *CAD-4 Software*. Enraf–Nonius, Delft, The Netherlands.
- Farrugia, L. J. (2012). *J. Appl. Cryst.* **45**, 849–854.
- Fonseca, T., Gigante, B., Marques, M. M., Gilchrist, T. L. & De Clercq, E. (2004). *Bioorg. Med. Chem.* **12**, 103–112.
- González, M. A., Pérez-Guaita, D., Correa-Royero, J., Zapata, B., Agudelo, L., Mesa-Arango, A. & Betancur-Galvis, L. (2010). *Eur. J. Med. Chem.* **45**, 811–816.
- Harms, K. & Wocadlo, S. (1995). *XCAD4*. University of Marburg, Germany.
- Rao, X. P. (2010). *Acta Cryst.* **E66**, o2725.
- Rao, X. P., Song, Z. Q. & He, L. (2008). *Heteroat. Chem.* **19**, 512–516.
- Rao, X. P., Song, Z. Q., Shang, S. B. & Wu, Y. (2009). *Acta Cryst.* **E65**, o2804.
- Sepulveda, B., Astudillo, L., Rodriguez, J., Yanez, T., Theoduloz, C. & Schmedahirschmann, G. (2005). *Pharmacol. Res.* **52**, 429–437.
- Sheldrick, G. M. (2008). *Acta Cryst.* **A64**, 112–122.
- Xing, Y. H., Zhang, W., Song, J. J., Zhang, Y. X., Jiang, X. X. & Wang, R. (2013). *Bioorg. Med. Chem. Lett.* **23**, 3868–3872.

supporting information

Acta Cryst. (2015). E71, o801–o802 [doi:10.1107/S2056989015017648]

Crystal structure of 7-isopropyl-1,4a,N-trimethyl-1,2,3,4,4a,4b,5,6,7,8,10,10a-dodecahydrophenanthrene-1-carboxamide

Li Liu, Xin-Yan Yan and Xiao-Ping Rao

S1. Comment

Rosin acid derivatives exhibit wide range of biological activities, such as antifungal and antitumor (Fonseca *et al.*, 2004; Rao *et al.*, 2008; González *et al.*, 2008; Xing *et al.*, 2013.) activities. Nitrogen derivatives of rosin acid have been studied as cytotoxic reagents and they are found to have high activity in reducing blood serum cholesterol levels in animals (Sepulveda *et al.*, 2005). In this work, we describe the crystal structure of the title compound.

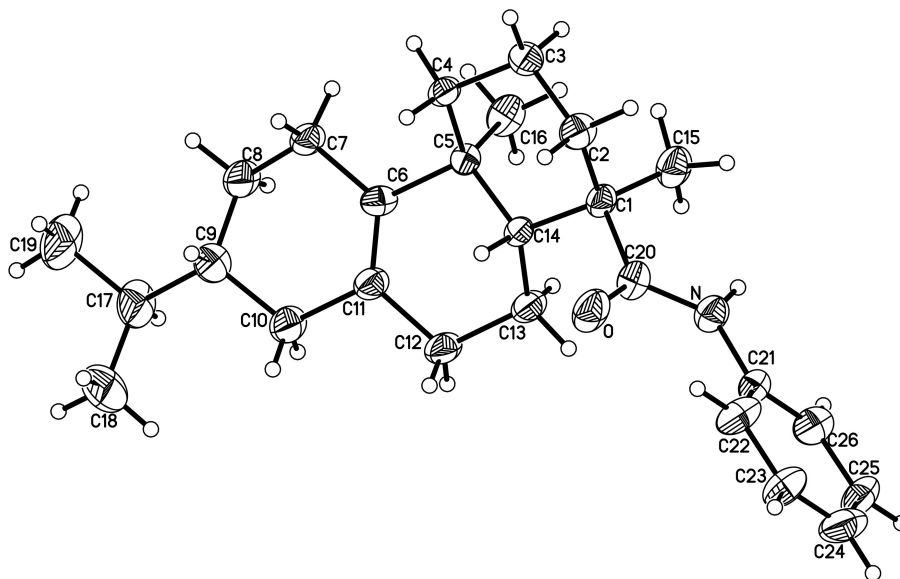
Dihydroabietic acid is one of the main component of hydrogenated rosin, which can be isolated from hydrogenated rosin by recrystallization. In this work, we have obtained the single crystal structure of the title compound, the tricyclic hydrophenanthrene nuclei had the similar crystal structure with dihydroabietic acid derivatives (Rao *et al.*, 2009; Rao, 2010). The two cyclohexenes adopt half chair conformations, whereas the cyclohexane has a chair conformation (Fig. 1). The two methyl groups are in axial positions with respect to the tricyclic hydrophenanthrene nuclei. The structures of related dihydroabietic acid derivatives are known (Rao *et al.* 2009; Rao, 2010)

S2. Experimental

A mixture of dihydroabietic acid (0.1 mol), oxalyl chloride (0.11 mol) and dichloromethane (40 ml) was stirred at 313 K for 4 h. After distilling off the solvent, the residue was added to aniline (0.2 mol) in toluene (60 ml) solution. The mixture was reacted for 24 h at room temperature. The solvent was distilled off, and upon recrystallization from acetone, white crystals of the title compound were obtained (yield 53%, M.p. 422 K). Single crystals were grown from acetone.

S3. Refinement

H atoms were positioned geometrically and refined as riding atoms, with C—H = 0.96 Å and $U_{\text{iso}}(\text{H}) = 1.5U_{\text{eq}}(\text{C})$ for methyl H atoms, and C—H = 0.97–0.98 Å and $U_{\text{iso}}(\text{H}) = 1.2U_{\text{eq}}(\text{C})$ for all other H atoms. The absolute structure was not determined.

**Figure 1**

Molecular structure of the title compound, with H atoms represented by small spheres of arbitrary radius and displacement ellipsoids at the 30% probability level.

7-Isopropyl-1,4a,N-trimethyl-1,2,3,4,4a,4b,5,6,7,8,10,10a-dodecahydrophenanthrene-1-carboxamide

Crystal data

$C_{26}H_{37}NO$

$M_r = 379.57$

Orthorhombic, $P2_12_12_1$

$a = 26.223$ (5) Å

$b = 5.9230$ (12) Å

$c = 14.493$ (3) Å

$V = 2251.0$ (8) Å³

$Z = 4$

$F(000) = 832$

$D_x = 1.120$ Mg m⁻³

Mo $K\alpha$ radiation, $\lambda = 0.71073$ Å

Cell parameters from 25 reflections

$\theta = 9\text{--}13^\circ$

$\mu = 0.07$ mm⁻¹

$T = 293$ K

Block, white

$0.20 \times 0.20 \times 0.10$ mm

Data collection

Enraf-Nonius CAD-4
diffractometer

Radiation source: fine-focus sealed tube

Graphite monochromator

$\omega/2\theta$ scans

Absorption correction: ψ scan

(CAD-4 Software; Enraf-Nonius, 1985)

$T_{\min} = 0.987$, $T_{\max} = 0.993$

4707 measured reflections

4122 independent reflections

2080 reflections with $I > 2\sigma(I)$

$R_{\text{int}} = 0.099$

$\theta_{\max} = 25.4^\circ$, $\theta_{\min} = 1.6^\circ$

$h = -31 \rightarrow 31$

$k = 0 \rightarrow 7$

$l = 0 \rightarrow 17$

3 standard reflections every 200 reflections

intensity decay: 1%

Refinement

Refinement on F^2

Least-squares matrix: full

$R[F^2 > 2\sigma(F^2)] = 0.079$

$wR(F^2) = 0.193$

$S = 1.01$

4122 reflections

254 parameters

0 restraints

Primary atom site location: structure-invariant
direct methods

Secondary atom site location: difference Fourier
map

Hydrogen site location: inferred from
neighbouring sites

H-atom parameters constrained

$$w = 1/[\sigma^2(F_o^2) + (0.040P)^2 + 2.3P]$$

$$\text{where } P = (F_o^2 + 2F_c^2)/3$$

$$(\Delta/\sigma)_{\max} < 0.001$$

$$\Delta\rho_{\max} = 0.21 \text{ e } \text{\AA}^{-3}$$

$$\Delta\rho_{\min} = -0.30 \text{ e } \text{\AA}^{-3}$$

Absolute structure: nd

Special details

Geometry. All e.s.d.'s (except the e.s.d. in the dihedral angle between two l.s. planes) are estimated using the full covariance matrix. The cell e.s.d.'s are taken into account individually in the estimation of e.s.d.'s in distances, angles and torsion angles; correlations between e.s.d.'s in cell parameters are only used when they are defined by crystal symmetry. An approximate (isotropic) treatment of cell e.s.d.'s is used for estimating e.s.d.'s involving l.s. planes.

Refinement. Refinement of F^2 against ALL reflections. The weighted R -factor wR and goodness of fit S are based on F^2 , conventional R -factors R are based on F , with F set to zero for negative F^2 . The threshold expression of $F^2 > \sigma(F^2)$ is used only for calculating R -factors(gt) *etc.* and is not relevant to the choice of reflections for refinement. R -factors based on F^2 are statistically about twice as large as those based on F , and R -factors based on ALL data will be even larger.

Fractional atomic coordinates and isotropic or equivalent isotropic displacement parameters (\AA^2)

	x	y	z	$U_{\text{iso}}^*/U_{\text{eq}}$
N	0.04603 (15)	0.2213 (8)	0.1116 (3)	0.0541 (12)
H0A	0.0340	0.3561	0.1081	0.065*
O	0.02279 (14)	-0.1458 (7)	0.1135 (3)	0.0712 (12)
C1	-0.04586 (18)	0.1222 (9)	0.0953 (3)	0.0443 (13)
C2	-0.07609 (18)	0.0042 (11)	0.1719 (3)	0.0547 (15)
H2A	-0.0656	-0.1526	0.1756	0.066*
H2B	-0.0685	0.0752	0.2306	0.066*
C3	-0.13357 (19)	0.0159 (10)	0.1540 (3)	0.0534 (15)
H3A	-0.1514	-0.0652	0.2025	0.064*
H3B	-0.1445	0.1723	0.1562	0.064*
C4	-0.14786 (18)	-0.0847 (9)	0.0608 (3)	0.0444 (13)
H4A	-0.1844	-0.0719	0.0520	0.053*
H4B	-0.1392	-0.2439	0.0603	0.053*
C5	-0.12012 (18)	0.0350 (9)	-0.0201 (3)	0.0373 (12)
C6	-0.12908 (18)	-0.1043 (9)	-0.1095 (3)	0.0444 (13)
C7	-0.18354 (18)	-0.1681 (10)	-0.1295 (3)	0.0515 (15)
H7A	-0.2058	-0.0466	-0.1096	0.062*
H7B	-0.1922	-0.3016	-0.0941	0.062*
C8	-0.1931 (2)	-0.2149 (12)	-0.2312 (4)	0.0659 (18)
H8A	-0.2269	-0.2785	-0.2388	0.079*
H8B	-0.1917	-0.0742	-0.2653	0.079*
C9	-0.1547 (2)	-0.3739 (12)	-0.2690 (3)	0.0620 (17)
H9A	-0.1558	-0.5079	-0.2294	0.074*
C10	-0.1015 (2)	-0.2759 (12)	-0.2579 (4)	0.0637 (17)
H10A	-0.0770	-0.3989	-0.2588	0.076*
H10B	-0.0943	-0.1800	-0.3106	0.076*
C11	-0.0933 (2)	-0.1404 (10)	-0.1712 (4)	0.0521 (15)
C12	-0.03866 (19)	-0.0583 (12)	-0.1611 (3)	0.0645 (18)
H12A	-0.0165	-0.1873	-0.1512	0.077*
H12B	-0.0282	0.0143	-0.2180	0.077*
C13	-0.03203 (18)	0.1058 (11)	-0.0822 (3)	0.0561 (16)

H13A	-0.0443	0.2538	-0.1003	0.067*
H13B	0.0038	0.1190	-0.0668	0.067*
C14	-0.06178 (17)	0.0224 (9)	0.0016 (3)	0.0416 (13)
H14A	-0.0541	-0.1391	0.0060	0.050*
C15	-0.0514 (2)	0.3815 (10)	0.1043 (4)	0.0629 (16)
H15A	-0.0868	0.4197	0.1110	0.094*
H15B	-0.0380	0.4529	0.0500	0.094*
H15C	-0.0329	0.4328	0.1575	0.094*
C16	-0.1422 (2)	0.2680 (10)	-0.0338 (4)	0.0597 (16)
H16A	-0.1367	0.3567	0.0207	0.089*
H16B	-0.1782	0.2562	-0.0454	0.089*
H16C	-0.1259	0.3393	-0.0854	0.089*
C17	-0.1645 (3)	-0.4587 (13)	-0.3682 (4)	0.081 (2)
H17A	-0.1606	-0.3274	-0.4087	0.097*
C18	-0.1258 (3)	-0.6326 (14)	-0.4005 (4)	0.109 (3)
H18A	-0.1333	-0.6755	-0.4629	0.164*
H18B	-0.1275	-0.7632	-0.3614	0.164*
H18C	-0.0922	-0.5688	-0.3977	0.164*
C19	-0.2188 (3)	-0.5441 (16)	-0.3825 (4)	0.114 (3)
H19A	-0.2230	-0.5928	-0.4452	0.170*
H19B	-0.2425	-0.4247	-0.3696	0.170*
H19C	-0.2252	-0.6687	-0.3417	0.170*
C20	0.0111 (2)	0.0508 (10)	0.1082 (4)	0.0501 (14)
C21	0.09969 (19)	0.2039 (9)	0.1201 (4)	0.0455 (13)
C22	0.1229 (2)	0.0189 (13)	0.1586 (4)	0.0669 (18)
H22A	0.1035	-0.1027	0.1788	0.080*
C23	0.1762 (2)	0.0137 (13)	0.1673 (4)	0.074 (2)
H23A	0.1921	-0.1103	0.1940	0.089*
C24	0.2042 (2)	0.1900 (14)	0.1367 (4)	0.082 (2)
H24A	0.2395	0.1847	0.1415	0.098*
C25	0.1812 (2)	0.3788 (12)	0.0981 (4)	0.0692 (18)
H25A	0.2005	0.5010	0.0781	0.083*
C26	0.1281 (2)	0.3796 (11)	0.0904 (4)	0.0614 (16)
H26A	0.1119	0.5038	0.0642	0.074*

Atomic displacement parameters (\AA^2)

	U^{11}	U^{22}	U^{33}	U^{12}	U^{13}	U^{23}
N	0.045 (3)	0.058 (3)	0.060 (3)	-0.004 (2)	-0.007 (2)	0.003 (3)
O	0.046 (2)	0.066 (3)	0.101 (3)	0.001 (2)	-0.021 (2)	-0.003 (3)
C1	0.035 (3)	0.054 (3)	0.044 (3)	-0.005 (3)	-0.005 (2)	-0.003 (3)
C2	0.053 (4)	0.071 (4)	0.040 (3)	-0.005 (3)	-0.006 (3)	0.002 (3)
C3	0.053 (3)	0.068 (4)	0.040 (3)	-0.008 (3)	0.006 (2)	-0.008 (3)
C4	0.035 (3)	0.054 (3)	0.044 (3)	-0.007 (3)	0.004 (2)	0.001 (3)
C5	0.039 (3)	0.041 (3)	0.032 (3)	-0.005 (2)	-0.001 (2)	0.002 (2)
C6	0.036 (3)	0.060 (3)	0.037 (3)	0.003 (3)	0.000 (2)	0.006 (3)
C7	0.037 (3)	0.071 (4)	0.047 (3)	0.000 (3)	-0.004 (2)	-0.007 (3)
C8	0.045 (4)	0.103 (5)	0.049 (4)	-0.007 (4)	-0.009 (3)	-0.010 (4)

C9	0.070 (4)	0.093 (5)	0.024 (3)	-0.015 (4)	-0.004 (3)	-0.004 (3)
C10	0.052 (4)	0.098 (5)	0.041 (3)	-0.009 (4)	-0.004 (3)	-0.012 (3)
C11	0.042 (3)	0.069 (4)	0.046 (3)	-0.005 (3)	-0.002 (3)	0.000 (3)
C12	0.041 (3)	0.111 (5)	0.041 (3)	-0.017 (4)	0.005 (3)	-0.012 (4)
C13	0.038 (3)	0.083 (4)	0.047 (3)	-0.011 (3)	0.002 (2)	-0.005 (3)
C14	0.034 (3)	0.049 (3)	0.042 (3)	-0.006 (2)	0.001 (2)	-0.003 (3)
C15	0.055 (4)	0.062 (4)	0.072 (4)	-0.005 (3)	-0.017 (3)	-0.003 (3)
C16	0.053 (4)	0.062 (4)	0.064 (4)	0.001 (3)	-0.016 (3)	0.010 (3)
C17	0.097 (5)	0.108 (6)	0.038 (3)	-0.031 (5)	-0.006 (3)	-0.007 (4)
C18	0.131 (7)	0.141 (8)	0.055 (4)	-0.017 (6)	0.018 (5)	-0.035 (5)
C19	0.102 (6)	0.178 (9)	0.061 (4)	-0.048 (6)	-0.022 (4)	-0.022 (6)
C20	0.049 (3)	0.049 (3)	0.052 (3)	-0.004 (3)	-0.009 (3)	0.009 (3)
C21	0.039 (3)	0.050 (3)	0.047 (3)	-0.004 (3)	-0.002 (3)	0.003 (3)
C22	0.039 (4)	0.100 (5)	0.062 (4)	-0.009 (4)	-0.002 (3)	0.018 (4)
C23	0.041 (4)	0.093 (5)	0.087 (5)	-0.005 (4)	-0.009 (3)	0.015 (4)
C24	0.041 (4)	0.135 (7)	0.069 (5)	0.002 (4)	0.002 (3)	-0.005 (5)
C25	0.050 (4)	0.095 (5)	0.063 (4)	-0.030 (4)	0.005 (3)	0.008 (4)
C26	0.055 (4)	0.082 (5)	0.047 (3)	-0.007 (3)	-0.005 (3)	0.009 (3)

Geometric parameters (Å, °)

N—C20	1.364 (6)	C11—C12	1.519 (7)
N—C21	1.416 (6)	C12—C13	1.511 (7)
N—H0A	0.8600	C12—H12A	0.9700
O—C20	1.206 (6)	C12—H12B	0.9700
C1—C2	1.532 (7)	C13—C14	1.526 (6)
C1—C14	1.539 (6)	C13—H13A	0.9700
C1—C15	1.548 (7)	C13—H13B	0.9700
C1—C20	1.564 (7)	C14—H14A	0.9800
C2—C3	1.531 (6)	C15—H15A	0.9600
C2—H2A	0.9700	C15—H15B	0.9600
C2—H2B	0.9700	C15—H15C	0.9600
C3—C4	1.524 (6)	C16—H16A	0.9600
C3—H3A	0.9700	C16—H16B	0.9600
C3—H3B	0.9700	C16—H16C	0.9600
C4—C5	1.551 (6)	C17—C18	1.520 (9)
C4—H4A	0.9700	C17—C19	1.525 (8)
C4—H4B	0.9700	C17—H17A	0.9800
C5—C16	1.510 (7)	C18—H18A	0.9600
C5—C6	1.555 (6)	C18—H18B	0.9600
C5—C14	1.564 (6)	C18—H18C	0.9600
C6—C11	1.315 (6)	C19—H19A	0.9600
C6—C7	1.505 (6)	C19—H19B	0.9600
C7—C8	1.520 (7)	C19—H19C	0.9600
C7—H7A	0.9700	C21—C26	1.350 (7)
C7—H7B	0.9700	C21—C22	1.372 (7)
C8—C9	1.484 (8)	C22—C23	1.402 (7)
C8—H8A	0.9700	C22—H22A	0.9300

C8—H8B	0.9700	C23—C24	1.351 (9)
C9—C10	1.519 (7)	C23—H23A	0.9300
C9—C17	1.544 (7)	C24—C25	1.388 (9)
C9—H9A	0.9800	C24—H24A	0.9300
C10—C11	1.506 (7)	C25—C26	1.397 (7)
C10—H10A	0.9700	C25—H25A	0.9300
C10—H10B	0.9700	C26—H26A	0.9300
C20—N—C21	128.0 (5)	C13—C12—H12B	109.0
C20—N—H0A	116.0	C11—C12—H12B	109.0
C21—N—H0A	116.0	H12A—C12—H12B	107.8
C2—C1—C14	108.9 (4)	C12—C13—C14	109.6 (4)
C2—C1—C15	110.1 (5)	C12—C13—H13A	109.8
C14—C1—C15	115.4 (5)	C14—C13—H13A	109.8
C2—C1—C20	106.6 (4)	C12—C13—H13B	109.8
C14—C1—C20	105.1 (4)	C14—C13—H13B	109.8
C15—C1—C20	110.4 (4)	H13A—C13—H13B	108.2
C3—C2—C1	111.5 (4)	C13—C14—C1	116.1 (4)
C3—C2—H2A	109.3	C13—C14—C5	109.0 (4)
C1—C2—H2A	109.3	C1—C14—C5	115.1 (4)
C3—C2—H2B	109.3	C13—C14—H14A	105.2
C1—C2—H2B	109.3	C1—C14—H14A	105.2
H2A—C2—H2B	108.0	C5—C14—H14A	105.2
C4—C3—C2	112.0 (4)	C1—C15—H15A	109.5
C4—C3—H3A	109.2	C1—C15—H15B	109.5
C2—C3—H3A	109.2	H15A—C15—H15B	109.5
C4—C3—H3B	109.2	C1—C15—H15C	109.5
C2—C3—H3B	109.2	H15A—C15—H15C	109.5
H3A—C3—H3B	107.9	H15B—C15—H15C	109.5
C3—C4—C5	112.1 (4)	C5—C16—H16A	109.5
C3—C4—H4A	109.2	C5—C16—H16B	109.5
C5—C4—H4A	109.2	H16A—C16—H16B	109.5
C3—C4—H4B	109.2	C5—C16—H16C	109.5
C5—C4—H4B	109.2	H16A—C16—H16C	109.5
H4A—C4—H4B	107.9	H16B—C16—H16C	109.5
C16—C5—C4	109.7 (4)	C18—C17—C19	110.9 (6)
C16—C5—C6	108.5 (4)	C18—C17—C9	113.3 (6)
C4—C5—C6	108.5 (4)	C19—C17—C9	113.0 (5)
C16—C5—C14	116.5 (4)	C18—C17—H17A	106.3
C4—C5—C14	106.6 (4)	C19—C17—H17A	106.3
C6—C5—C14	106.9 (4)	C9—C17—H17A	106.3
C11—C6—C7	120.4 (5)	C17—C18—H18A	109.5
C11—C6—C5	123.1 (5)	C17—C18—H18B	109.5
C7—C6—C5	115.9 (4)	H18A—C18—H18B	109.5
C6—C7—C8	112.9 (4)	C17—C18—H18C	109.5
C6—C7—H7A	109.0	H18A—C18—H18C	109.5
C8—C7—H7A	109.0	H18B—C18—H18C	109.5
C6—C7—H7B	109.0	C17—C19—H19A	109.5

C8—C7—H7B	109.0	C17—C19—H19B	109.5
H7A—C7—H7B	107.8	H19A—C19—H19B	109.5
C9—C8—C7	111.3 (5)	C17—C19—H19C	109.5
C9—C8—H8A	109.4	H19A—C19—H19C	109.5
C7—C8—H8A	109.4	H19B—C19—H19C	109.5
C9—C8—H8B	109.4	O—C20—N	122.8 (5)
C7—C8—H8B	109.4	O—C20—C1	120.7 (5)
H8A—C8—H8B	108.0	N—C20—C1	116.4 (5)
C8—C9—C10	109.9 (5)	C26—C21—C22	120.0 (5)
C8—C9—C17	115.9 (5)	C26—C21—N	117.6 (5)
C10—C9—C17	112.2 (5)	C22—C21—N	122.4 (5)
C8—C9—H9A	106.0	C21—C22—C23	119.8 (6)
C10—C9—H9A	106.0	C21—C22—H22A	120.1
C17—C9—H9A	106.0	C23—C22—H22A	120.1
C11—C10—C9	115.0 (4)	C24—C23—C22	119.7 (7)
C11—C10—H10A	108.5	C24—C23—H23A	120.2
C9—C10—H10A	108.5	C22—C23—H23A	120.2
C11—C10—H10B	108.5	C23—C24—C25	121.2 (6)
C9—C10—H10B	108.5	C23—C24—H24A	119.4
H10A—C10—H10B	107.5	C25—C24—H24A	119.4
C6—C11—C10	123.5 (5)	C24—C25—C26	118.0 (6)
C6—C11—C12	123.8 (5)	C24—C25—H25A	121.0
C10—C11—C12	112.7 (4)	C26—C25—H25A	121.0
C13—C12—C11	112.8 (4)	C21—C26—C25	121.4 (6)
C13—C12—H12A	109.0	C21—C26—H26A	119.3
C11—C12—H12A	109.0	C25—C26—H26A	119.3
C14—C1—C2—C3	-54.0 (6)	C15—C1—C14—C13	60.9 (6)
C15—C1—C2—C3	73.4 (6)	C20—C1—C14—C13	-61.0 (6)
C20—C1—C2—C3	-166.9 (5)	C2—C1—C14—C5	56.2 (6)
C1—C2—C3—C4	56.7 (6)	C15—C1—C14—C5	-68.1 (6)
C2—C3—C4—C5	-58.1 (6)	C20—C1—C14—C5	170.0 (4)
C3—C4—C5—C16	-71.7 (5)	C16—C5—C14—C13	-65.6 (6)
C3—C4—C5—C6	169.9 (4)	C4—C5—C14—C13	171.6 (4)
C3—C4—C5—C14	55.2 (5)	C6—C5—C14—C13	55.8 (5)
C16—C5—C6—C11	101.6 (6)	C16—C5—C14—C1	66.8 (6)
C4—C5—C6—C11	-139.2 (5)	C4—C5—C14—C1	-56.0 (5)
C14—C5—C6—C11	-24.7 (7)	C6—C5—C14—C1	-171.8 (4)
C16—C5—C6—C7	-69.5 (6)	C8—C9—C17—C18	-176.2 (6)
C4—C5—C6—C7	49.6 (6)	C10—C9—C17—C18	56.4 (8)
C14—C5—C6—C7	164.2 (4)	C8—C9—C17—C19	-49.0 (9)
C11—C6—C7—C8	-14.9 (8)	C10—C9—C17—C19	-176.3 (7)
C5—C6—C7—C8	156.5 (5)	C21—N—C20—O	0.9 (9)
C6—C7—C8—C9	49.8 (7)	C21—N—C20—C1	-178.2 (5)
C7—C8—C9—C10	-59.3 (6)	C2—C1—C20—O	52.5 (7)
C7—C8—C9—C17	172.2 (5)	C14—C1—C20—O	-62.9 (7)
C8—C9—C10—C11	35.4 (7)	C15—C1—C20—O	172.0 (6)
C17—C9—C10—C11	165.9 (6)	C2—C1—C20—N	-128.3 (5)

C7—C6—C11—C10	-9.5 (9)	C14—C1—C20—N	116.2 (5)
C5—C6—C11—C10	179.7 (5)	C15—C1—C20—N	-8.8 (7)
C7—C6—C11—C12	173.0 (5)	C20—N—C21—C26	157.2 (6)
C5—C6—C11—C12	2.3 (9)	C20—N—C21—C22	-24.0 (9)
C9—C10—C11—C6	-1.1 (9)	C26—C21—C22—C23	0.4 (9)
C9—C10—C11—C12	176.7 (6)	N—C21—C22—C23	-178.4 (5)
C6—C11—C12—C13	-10.9 (8)	C21—C22—C23—C24	-0.8 (10)
C10—C11—C12—C13	171.4 (5)	C22—C23—C24—C25	1.2 (11)
C11—C12—C13—C14	42.7 (7)	C23—C24—C25—C26	-1.1 (10)
C12—C13—C14—C1	160.7 (4)	C22—C21—C26—C25	-0.3 (9)
C12—C13—C14—C5	-67.4 (6)	N—C21—C26—C25	178.5 (5)
C2—C1—C14—C13	-174.8 (5)	C24—C25—C26—C21	0.7 (9)

Hydrogen-bond geometry (Å, °)

Cg1 is the centroid of the C21—C26 ring.

<i>D</i> —H... <i>A</i>	<i>D</i> —H	H... <i>A</i>	<i>D</i> ... <i>A</i>	<i>D</i> —H... <i>A</i>
C3—H3A...Cg1 ⁱ	0.97	2.82	3.705 (5)	151

Symmetry code: (i) $x+1/2, -y-1/2, -z$.