

Reactive Oxygen Species Modulate the Barrier Function of the Human Glomerular Endothelial Glycocalyx

Anurag Singh^{1,2*}, Raina D. Ramnath¹, Rebecca R. Foster¹, Emma C. Wylie¹, Vincent Fridén³, Ishita Dasgupta¹, Borje Haraldsson³, Gavin I. Welsh¹, Peter W. Mathieson¹, Simon C. Satchell¹

1 Academic Renal Unit, Clinical Sciences North Bristol, Southmead Hospital, Bristol, United Kingdom, **2** Division of Medicine, Chilliwack General Hospital, Fraser Health Authority Chilliwack, British Columbia, Canada, **3** Renal Unit, Institute of Medicine, Sahlgrenska Academy, Gothenburg University, Gothenburg, Sweden

Abstract

Reactive oxygen species (ROS) play a key role in the pathogenesis of proteinuria in glomerular diseases like diabetic nephropathy. Glomerular endothelial cell (GEnC) glycocalyx covers the luminal aspect of the glomerular capillary wall and makes an important contribution to the glomerular barrier. ROS are known to depolymerise glycosaminoglycan (GAG) chains of proteoglycans, which are crucial for the barrier function of GEnC glycocalyx. The aim of this study is to investigate the direct effects of ROS on the structure and function of GEnC glycocalyx using conditionally immortalised human GEnC. ROS were generated by exogenous hydrogen peroxide. Biosynthesis and cleavage of GAG chains was analyzed by radiolabelling (³⁵S and ³H-glucosamine). GAG chains were quantified on GEnC surface and in the cell supernatant using liquid chromatography and immunofluorescence techniques. Barrier properties were estimated by measuring trans-endothelial passage of albumin. ROS caused a significant loss of WGA lectin and heparan sulphate staining from the surface of GEnC. This led to an increase in trans-endothelial albumin passage. The latter could be inhibited by catalase and superoxide dismutase. The effect of ROS on GEnC was not mediated via the GAG biosynthetic pathway. Quantification of radiolabelled GAG fractions in the supernatant confirmed that ROS directly caused shedding of HS GAG. This finding is clinically relevant and suggests a mechanism by which ROS may cause proteinuria in clinical conditions associated with high oxidative stress.

Citation: Singh A, Ramnath RD, Foster RR, Wylie EC, Fridén V, et al. (2013) Reactive Oxygen Species Modulate the Barrier Function of the Human Glomerular Endothelial Glycocalyx. PLoS ONE 8(2): e55852. doi:10.1371/journal.pone.0055852

Editor: Dominique Guerrot, Rouen University Hospital, France

Received: June 14, 2012; **Accepted:** January 5, 2013; **Published:** February 14, 2013

Copyright: © 2013 Singh et al. This is an open-access article distributed under the terms of the Creative Commons Attribution License, which permits unrestricted use, distribution, and reproduction in any medium, provided the original author and source are credited.

Funding: A. Singh is the recipient of a research training fellowship from Kidney Research UK (Grant TF22/2004) and an Academy of Medical Sciences/Wellcome Trust UK starter grant for clinical lecturers. The work was also supported by Diabetes UK (Grant 10/0004003). The funders had no role in study design, data collection and analysis, decision to publish, or preparation of the manuscript.

Competing Interests: The authors have declared that no competing interests exist.

* E-mail: anuragsing@hotmail.com

Introduction

Cardiovascular disease remains one of the principle causes of mortality in both the developed and the developing worlds [1]. Scientific and clinical research in the last two decades has confirmed the associations between microalbuminuria, cardiovascular disease and progressive kidney disease [2]. This is particularly evident in systemic diseases like diabetes and hypertension where the onset of microalbuminuria strongly predicts death [3,4]. Although, generalized damage to the vascular endothelium is believed to offer a plausible explanation of the link between the kidney and systemic circulation, the precise mechanisms of injury are yet to be elucidated [5].

Vascular oxidative stress is an important factor leading to endothelial dysfunction and has been identified as a significant contributor to the progression of atherosclerosis and other vascular complications of diabetes [6,7]. Excessive generation of reactive oxygen species (ROS) is central to the pathogenesis of diabetic nephropathy [8]. Proteinuria heralds the onset of kidney disease in diabetes. The wall of the glomerular capillary is the primary site of sieving action in the kidney and is known as the glomerular filtration barrier (GFB) [9]. The GFB is uniquely adapted to be 'selectively permeable' i.e. impermeable to macromolecules but allow relatively free passage of water and solutes and is very tightly

regulated in health. This property of the GFB depends on the combined action of its components: the podocytes, glomerular basement membrane and the endothelium with its glycocalyx [10]. The roles of glomerular podocytes and the glomerular basement membrane in the pathogenesis of proteinuric kidney diseases have been described extensively. However, due to difficulties in isolation and lack of experimental models, the vital contribution of the glomerular endothelial cell (GEnC), and particularly its glycocalyx, has only recently been appreciated [11–14].

GEnC are highly specialized cells whose luminal surface is covered by a layer of glycocalyx 200–400 nm in thickness and which covers both fenestral and inter-fenestral domains [15,16,17]. The glycocalyx is a dynamic hydrated layer largely composed of proteoglycans, glycosaminoglycans (GAG) and adsorbed plasma proteins [14,18]. Proteoglycans, particularly heparan sulphate (HS) proteoglycans are largely responsible for the anionic charge characteristics of the glycocalyx.

Vascular endothelial cells are vulnerable to damage by ROS and glycocalyx is believed to act as a 'vasculo-protective shield' [18]. Hence, endothelial glycocalyx is a major site of action of circulating ROS and cytokines produced during oxidative stress [19–21]. Intact endothelial glycocalyx also has binding sites for anti-oxidant enzymes like xanthine oxidoreductase [22] and

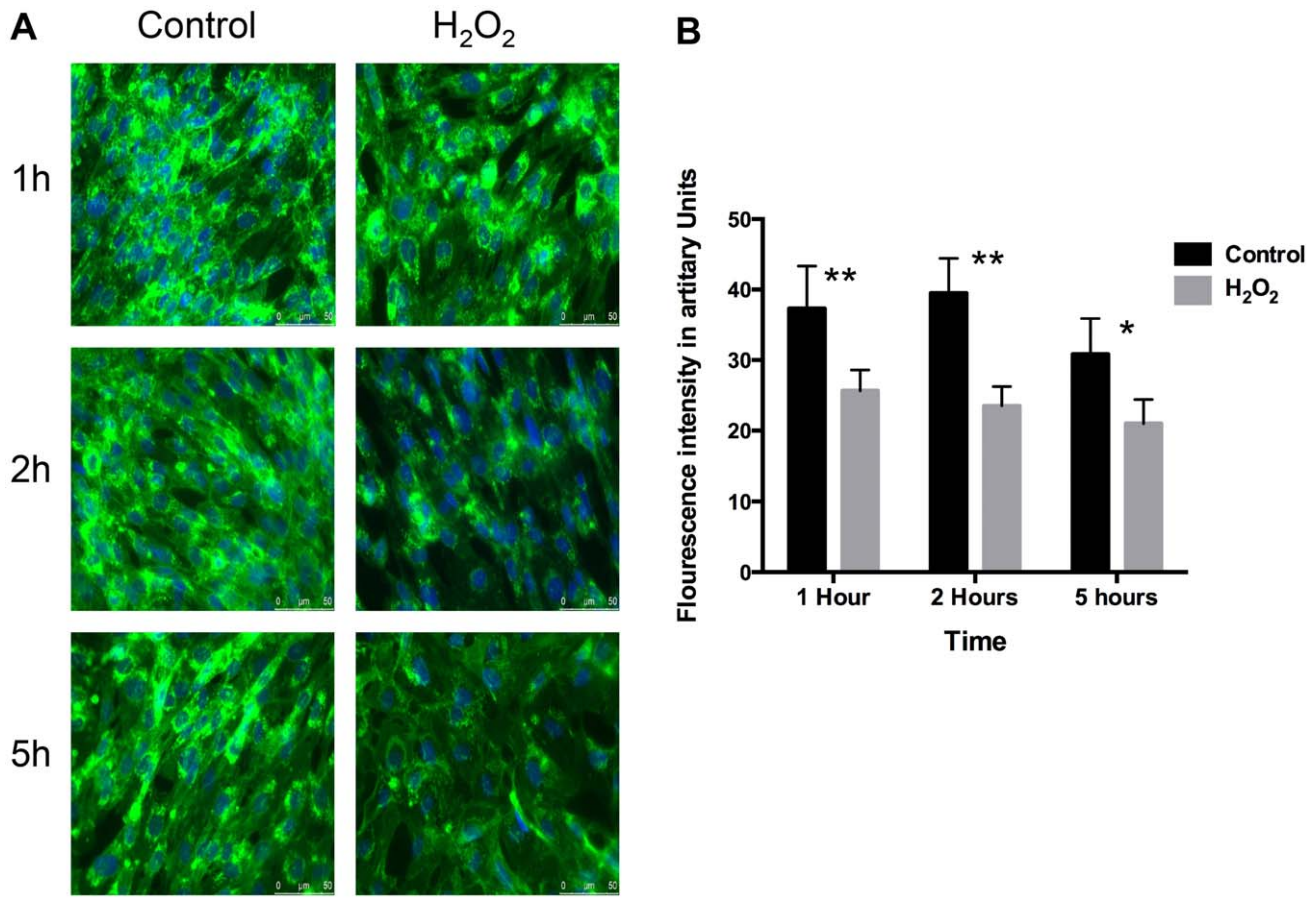


Figure 1. WGA lectin after ROS. **A** Fluorescence microscopy after labeling GEnC with WGA-FITC lectin and nuclear staining with DAPI. Left column: represents ‘control’ images (no treatment). Right column: represents images after treatment with 100 μ M of H₂O₂. The rows define the time periods: 1 h, 2 h and 5 h. These images show reduction in the binding of WGA-FITC lectin after treatment with H₂O₂ over time. **B** Bar chart showing quantitative comparisons of fluorescence intensity of WGA-FITC lectin between GEnC treated with vehicle only and H₂O₂ (100 μ M) for 1 h, 2 h and 5 h. Fluorescence is quantified by using NIH Image J software. The chart shows significant reduction in the expression of WGA-FITC after treatment with H₂O₂ (n = 10, p = 0.01, ANOVA). doi:10.1371/journal.pone.0055852.g001

endothelial superoxide dismutase (eSOD) [23] so, has its own capacity to quench free radicals. Therefore, loss of endothelial glycocalyx exposes the vascular endothelium to the deleterious effects of ROS, which subsequently leads to endothelial dysfunction.

These observations are relevant to the glomerular microcirculation particularly in understanding the pathogenesis of proteinuria in states of high oxidative states. Here we investigate the direct effects of exogenous ROS on the key components of human GEnC glycocalyx and quantify consequent changes in its protein restrictive barrier function. We test the hypotheses that exposure to ROS directly alters the critical components of the GEnC glycocalyx and that these alterations have implications for its barrier action to the passage of albumin.

Results

ROS Reduce Expression of WGA Lectin and HS GAG without any Deleterious Effect on Cell Survival

GEnC monolayers exposed to H₂O₂ reveal a significantly reduced cell surface binding of WGA lectin compared to control over 1, 2 and 5 hours (Figure 1A). This is quantified by showing a significant reduction in the fluorescent intensity after treatment

with H₂O₂ over 5 hours (Figure 1B). Similarly, there is significant reduction in the expression of cell surface HS after H₂O₂ treatment over time (Figure 2A & 2B). This effect of H₂O₂ on HS can be blocked if the cells are co-incubated with free radical scavengers, superoxide dismutase (SOD) and catalase (Cat) along with H₂O₂. The latter result confirms that the changes seen after H₂O₂ are specifically as a result of ROS.

We also tested the GEnC monolayers for any adverse cytotoxic effect of H₂O₂. Exposure to H₂O₂ does not affect the survival or morphology of GEnC at the concentrations of 50–200 μ M (Figure 3).

ROS Exposure does not Alter Biosynthesis of GAG Chains

Study of the tritiated-glucosamine incorporated into the glycocalyx of GEnC (a measure of both sulphated and non-sulphated GAG chains, as glucosamine is a component of the disaccharide chain of GAG “backbone”) revealed that exposure to H₂O₂ for 48 h did not cause a significant change compared to controls. This is evident (Figure 4A) in the cumulative data of the isolated fractions. Incorporation of S³⁵ was also not significantly changed by H₂O₂ (Figure 4B). These results imply the marked reduction in lectin binding and HS expression observed in the

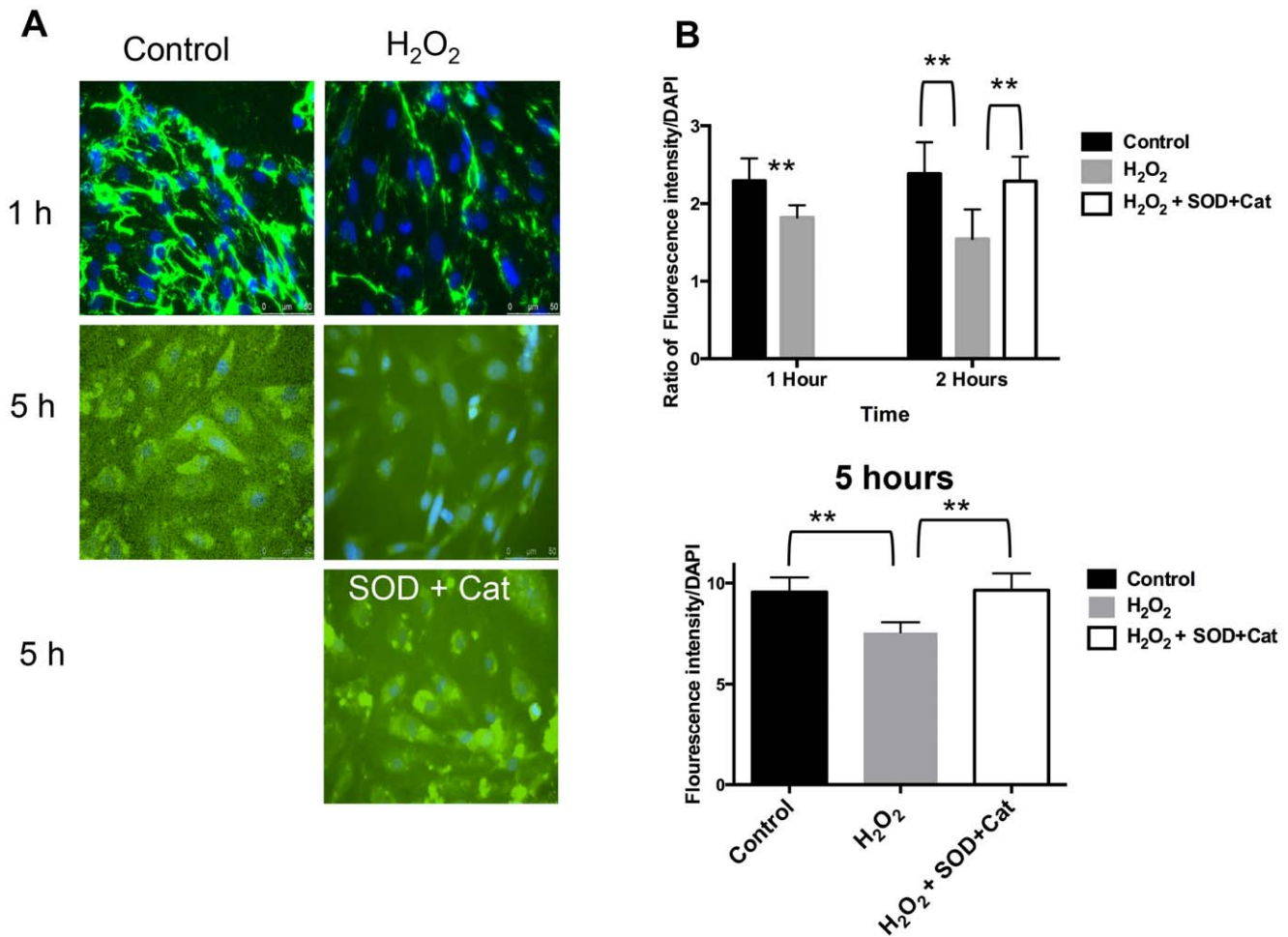


Figure 2. Expression of HS GAG on GEnC surface after ROS. **A** Immunofluorescence microscopy after staining GEnC with anti-HS antibody and nuclear staining with DAPI. Left column: represents ‘control’ images (no treatment). Right column: represents images after treatment with 100 μM of H₂O₂. 1st and 2nd rows define the time periods: 1 h and 5 h. 3rd row: Image in the right column shows GEnC treated with both H₂O₂ and inhibitors, superoxide dismutase (SOD) and catalase (Cat). These images show reduction in anti-HS staining after treatment with H₂O₂ over time. This effect can be blocked in the presence of SOD and Cat. **B** Fluorescence intensity after immunostaining of GEnC with anti-HS antibody over time. Comparisons are shown between controls, H₂O₂ (100 μM) and H₂O₂ (100 μM)+SOD and Cat. Y-axis shows ratio of fluorescein emission (from HS) with nuclear staining (DAPI) which is used as a control for cell numbers. The top bar graph shows significant reduction in HS after 1 h and 2 h of H₂O₂ treatment (n = 11; p < 0.001, t-test). Adding SOD and catalase at the same time as H₂O₂ blocks the effect of H₂O₂ analyzed at 2 h (n = 11; p < 0.01, t-test). The lower bar graph confirms the effects of H₂O₂ can be reproduced at 5 h (n = 16; p < 0.01, t-test). doi:10.1371/journal.pone.0055852.g002

previous experiment is not a result of reduction in GAG biosynthesis.

ROS Leads to Increased Cleavage of Sulphated GAG from GEnC Glycocalyx

Following the results from the GAG biosynthesis experiment. We then wanted to quantify cleaved GAG residues in the GEnC supernatant after exposure to H₂O₂. This was done using two techniques: Alcian Blue assay and quantification of radiolabelled GAG fractions in the supernatant after exposure to H₂O₂. Alcian Blue has high affinity to sulphated GAG residues due to its high anionic density. Results show a significant increase in the Alcian Blue binding in the supernatant of the GEnC exposed to H₂O₂ compared to controls (Figure 5A) suggesting cleavage of GAG chains. Further, radiolabelling studies to characterize the GAG in supernatant show markedly elevated levels of fractions with HS (Figure 5B) rather than HA (Figure 5C) confirming the loss of highly anionic sulphated GAG. This result confirms that the

apparent reduction in the expression of cell surface HS demonstrated on immunofluorescence is as a result of direct cleavage from the GEnC surface.

ROS Transiently Reduce Trans-endothelial Electrical Resistance (TEER) of GEnC Monolayers

GEnC monolayers treated with H₂O₂ show an immediate, but non-sustained reduction in the TEER measured in a real time analyzer. H₂O₂ is added at time zero, showing significant effect in less than 2 min with maximal effect at 30 min showing reduction in TEER compared to control GEnC treated with vehicle only (Figure 6). This effect completely resolves by 90 min with TEER returning to baseline.

ROS Cause a Significant and Sustained Increase in Passage of Albumin Across GEnC Monolayers

In the light of the findings on TEER described above and to avoid a confounding effect of reduced TEER (suggesting increased

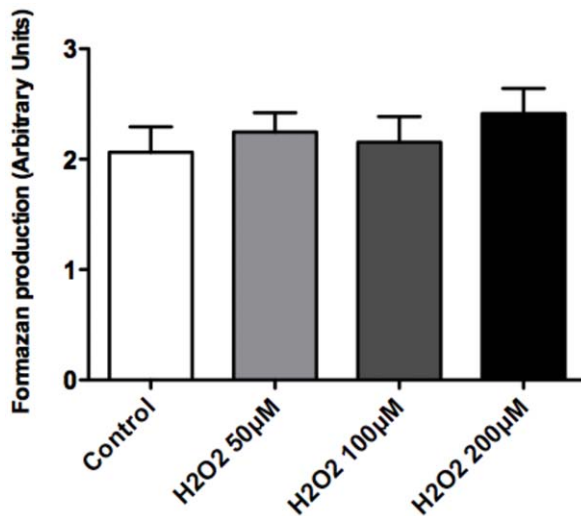


Figure 3. Cell survival assay after ROS. Bar graph showing measurement of absorbance in arbitrary units (Y axis), which estimates amount of formazan produced by GEnC which is used as a surrogate for cell survival. GEnC were treated with control (vehicle), 50, 100 and 200 µM of H₂O₂. Results show no significant differences (n = 12; p = ns; ANOVA).

doi:10.1371/journal.pone.0055852.g003

junctional permeability), estimation of albumin passage across GEnC monolayers was performed after 120 min of exposure. H₂O₂ significantly increased passage of albumin across GEnC monolayers in a dose dependant manner (Figure 7A). The effect of H₂O₂ treatment was significant at 100 µM and 200 µM. In a set of separate experiments, the effect of H₂O₂ at 100 µM could be partially blocked with free radical scavengers, superoxide dismutase and catalase (Figure 7B).

Discussion

In our study we used human GEnC that are conditionally immortalized and express the typical phenotypic characteristics. These cells have been well studied previously and express glycocalyx under culture conditions [12,14]. There were no significant changes in GEnC survival after exposure to H₂O₂ as judged by production of formazan using the WST-1 assay. GEnC were also carefully monitored by phase contrast microscopy during experiments and no significant problems with monolayer formation or cell detachment were noted at the concentrations of H₂O₂ used for treatments in experiments. Our results demonstrate loss of glycocalyx from the surface of GEnC after exposure to H₂O₂. This was evident from significant loss of WGA lectin and HS immunostaining from the surface of GEnC. The loss of GAG from GEnC cell surface was associated with markedly increased HS GAG fractions in the supernatant. This was first demonstrated using an Alcian Blue colorimetric assay (indicating loss of anionic residues) and then upon quantification of radiolabelled GAG fractions separated by liquid chromatography. Analysis of incorporated radiolabeled 3H-glucosamine and S³⁵ was used to study biosynthesis of GAG over 48 h after treatment with H₂O₂. Our results did not show significant changes in the biosynthesis of either total or sulphated GAG chains after exposure to of H₂O₂ over a 48 h period of analysis. The effect of ROS is short-lived and the later finding confirms their direct action on the sulphated GAG as suggested by the Alcian blue binding experiments. ROS reduced the TEER of GEnC monolayers and increased the

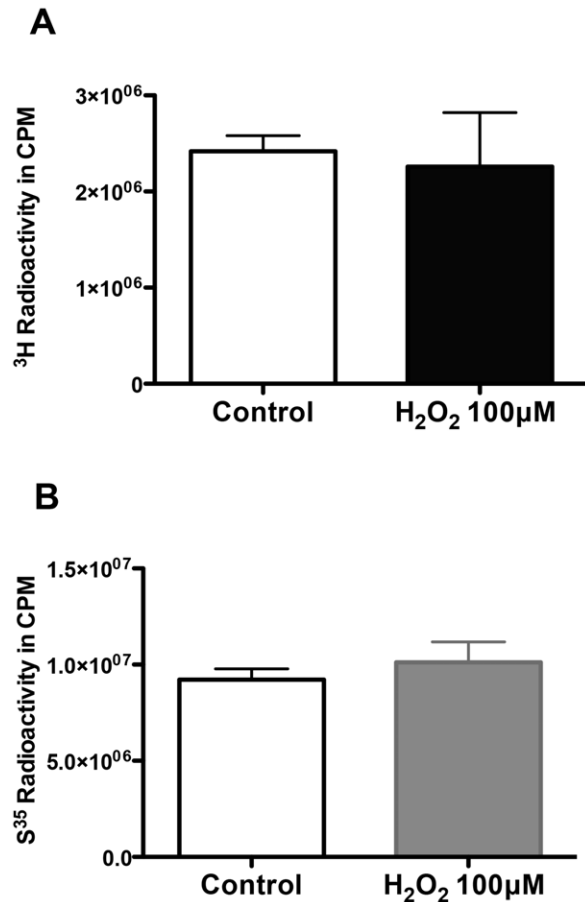


Figure 4. Biosynthesis of GAG chains after ROS. A&B Charts showing comparison of **A**, the cumulative 3H³-glucosamine or **B**, S³⁵ labeled GAG incorporated into the GEnC under control versus H₂O₂ conditions. Y-axes represent amount of radioactivity in counts per minute (CPM). Results show no significant changes in the rate of biosynthesis of neither non-sulphated (3H³-glucosamine) nor sulphated GAG (S³⁵) after exposing cells to H₂O₂ (n=6 for both experiments; p=0.12 & 0.19 respectively).

doi:10.1371/journal.pone.0055852.g004

paracellular transport. The effect was immediate, lasting for 90 min with maximal effect at 30 min. The relatively short term and reversible effect of ROS (particularly H₂O₂) has also been previously reported [24] and is due to increased gaps in the endothelial junctions [25] and mediated *via* Ca⁺ signaling pathways [26]. ROS caused an increase in the macromolecular passage in a dose dependant manner. The changes observed showing cleavage of HS after ROS coupled with increase in macromolecular passage follow a similar pattern seen after treatment with HS degrading enzymes reported previously [14]. It is therefore highly probable that loss of HS from GEnC glycocalyx after to ROS is likely responsible for the increase in macromolecular passage observed in the FITC-albumin experiments. It was also reassuring to see that effect of ROS could be partly inhibited by free radical scavengers.

ROS are well known to depolymerise and damage the structure of HS, CS and HA GAG [27]. Non-sulphated GAG, HA appears to be particularly susceptible to damage from ROS [28]. Loss of sulphation from GAG chains particularly HS is a known feature in diabetes and is linked to chronic hyperglycemia [29]. This line of evidence suggests that the changes in the chemical structure of

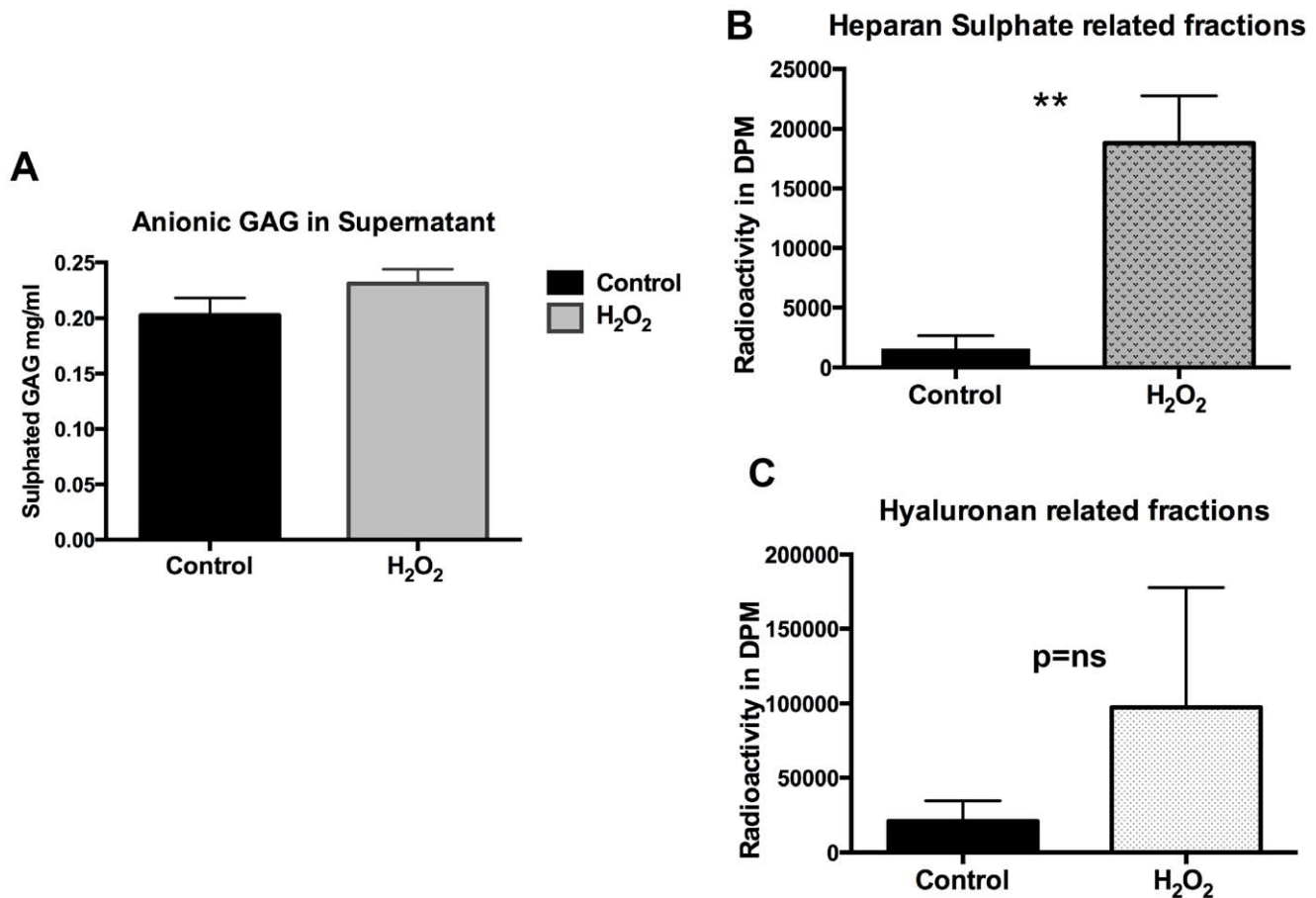


Figure 5. Estimation of GAG in GEnC supernatant. **A** Graph showing analysis of highly anionic GAG present in the supernatant following treatment of GEnC with controls versus H₂O₂. The experiment utilizes Alcian Blue dye that binds to the anionic residues of proteoglycans. Cumulative data from individual experiments shows significant increase in the quantity of alcian blue staining in the supernatant after H₂O₂. This confirms cleavage of GAG residues from the surface of GEnC after exposure to ROS (n=3 experiments (individual experiment replicates = 8–12), p<0.05). **B** Chart showing comparison of ³H³-glucosamine labeled HS GAG fractions isolated from GEnC supernatant under control and post-H₂O₂ conditions. Results show marked increase in the HS GAG fractions in the supernatant compared to controls after treatment with H₂O₂ suggesting cleavage of HS GAG (n=4; p=0.0019; t test). **C** Chart showing comparison of ³H³-glucosamine labeled Hyaluronan GAG (non-sulphated) fractions isolated from GEnC supernatant under control and post-H₂O₂ conditions. Results show a trend but not a significant increase in the non sulphated/Hyaluronan GAG fractions in the supernatant compared to controls. (n=4; p=0.053; t test). doi:10.1371/journal.pone.0055852.g005

GAG, particularly loss of sulphation may render the GEnC glycocalyx more susceptible to oxidant damage. Interestingly, our results also show that ROS largely cleaves sulphated GAG (HS) from the GEnC glycocalyx.

H₂O₂ is a major source of ROS in the microvascular endothelium and is widely used to model oxidative stress *in vitro* and *in vivo* [30,31]. H₂O₂ injected directly into the renal artery causes reversible nephrotic range proteinuria in an experimental model without any evidence of ultrastructural abnormality in the GFB [32]. Similarly, ROS have been shown to cause a defect in both size and charge selectivity of the GFB with an intact podocyte and GBM structure in an ischaemia-reperfusion injury model [33]. Onset of proteinuria following generation of oxidative stress in mouse glomeruli has also been associated with increased excretion of HS GAG. Both proteinuria and loss of glomerular HS GAG could be reversed upon blockade of ROS [34]. Indeed, hydroxyl radicals generated by H₂O₂ are also known to depolymerise HS GAG [35]. In the absence of direct experimental investigation, the evidence above suggests a role of GEnC glycocalyx in the dysfunction of the GFB caused by oxidant injury.

The results of our study suggest that ROS disrupt GEnC glycocalyx through a direct mechanism of action without affecting the GAG biosynthetic pathway. This is the first study that elucidates a potential mechanism by which ROS can disrupt the barrier properties of GEnC glycocalyx. These findings suggest that GEnC glycocalyx plays a significant role in the pathogenesis of oxidant induced glomerular injury. Excessive generation of ROS is associated with the pathogenesis of a number of glomerular diseases including diabetic nephropathy [36] and acute kidney injury due to ischemia-reperfusion injury and sepsis [37–39]. Future efforts should be focused to dissect the molecular pathways in order to develop new molecular therapeutic targets.

Materials and Methods

GEnC Culture

We used a normal human conditionally immortalised GEnC line as described in detail previously [12]. Briefly, primary culture GEnC were exposed to separate retroviral vectors transducing a temperature sensitive mutant of SV40 large T antigen and the catalytic subunit of human telomerase. At the permissive

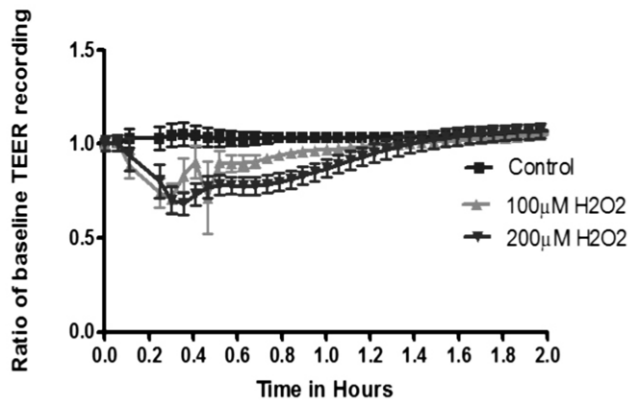


Figure 6. Transendothelial electrical resistance after ROS. Graph showing real time trans-endothelial electrical resistance (TEER) recordings of GEnC monolayers during exposure to H₂O₂. H₂O₂ is added at time point 0 and measurements are taken every 2 min. TEER (Y-axis) shown as a ratio of baseline recording versus time (X-axis). Results show a reduction in TEER after addition of H₂O₂ within the first 2 min. This effect is significant and peaks at 24 min followed by recovery by 60 min. There is complete resolution of changes in TEER by 90 min. doi:10.1371/journal.pone.0055852.g006

temperature of 33°C the tsSV40LT transgene is activated causing cell proliferation (without telomere shortening) while at 37°C the transgene is inactivated rendering cells non-proliferative and quiescent. Conditionally immortalised GEnC were used for experiments after maintaining them at the non-permissive temperature for 7 days. GEnC were cultured in endothelial growth medium-2 microvascular (EGM2-MV, Cambrex, Wokingham, UK) containing foetal calf serum (5%) and growth factors as supplied with the exception of VEGF.

Generation of ROS and GEnC Survival Assay

H₂O₂ (Sigma-Aldrich Cat: 516813) was used at concentrations from 50–500 μM in preliminary experiments to determine cellular toxicity. H₂O₂ and hydroxyl radical (OH⁻) acts as ROS. This was assessed by phase contrast microscopy. Further, a cell survival assay was performed using a commercially available WST-1 assay kit (Roche, Germany). For the WST-1 assay, GEnC were incubated with 1:10 dilution of WST-1 reagent for 2 h. 200 μl of media from each well was pipetted into a 96 well plate and analysed on a spectrophotometer at 420–480 nm.

100 μM of H₂O₂ was taken as the optimal concentration (no evidence of cell toxicity) for all experiments: 'ROS media'. SOD (from bovine erythrocytes; Sigma-Aldrich S25115) and catalase (from bovine liver; Sigma-Aldrich C1345) were used to scavenge ROS. The powder form was solubilized in serum free media and used at 300 U/ml and 1200 U/ml respectively. For inhibition of ROS: both SOD and catalase were added at the same time as 100 μM of H₂O₂. These concentrations were derived from a previously published protocol [24].

Metabolic Labeling and Extraction of Proteoglycans

Metabolic labeling of GAG was achieved by culturing GEnC in media containing 50 μCi/ml [³⁵S] sulfate and 20 μCi/ml D-[³H] glucosamine (Amersham Biosciences). After 10 days, the media in the 'control' GEnC was replaced by serum free media (vehicle) whereas the test GEnC media was changed to ROS media (100 μM of H₂O₂). Next, [³⁵S]-sulphate and [³H]-glucosamine was added to the respective media for 48 h. Medium was collected and filtrated through a 0.22 μm filter (Millipore, MA).

Cells were extracted in RIPA lysis buffer containing 10% (v/v) Triton X-100, 10% (m/v) SDS, 10% (m/v) sodium deoxycholate and Complete Mini Protease Inhibitor (Roche, Germany) in phosphate buffered saline and filtrated through a 0.22 μm filter. Protein concentration was measured using a BCA protein assay kit (Pierce Labs, IL). For radiolabelling studies to estimate cleavage of GAG in the supernatant, cells were treated with 20 uCi/ml of D-³H³ glucosamine and incubated for 24 hours. The media was then removed and cells gently washed in PBS. Serum free media was then added, containing 100 uM H₂O₂ for 2 h. Media was then collected and concentrated using a 3 kDa molecular weight cut off Millipore filter and run on the Anion Exchange Liquid Chromatography to isolate fractions.

Isolation of Proteoglycans

A HiTrap[®] DEAE FF (1 ml; Amersham Biosciences) column connected to a ÄKTA[™] FPLC system (Amersham Biosciences) was equilibrated with 6 M urea, 0.5 M NaOAc, pH 5.8, 5 μg/ml bovine albumin, 0.1% Triton X-100 (equilibration buffer). Sample was applied to the column at 1 ml/min and subsequently merged with column matrix for 15 min. The column was then washed successively with 10 ml of three different buffers, at 10 ml/min. 1) Equilibration buffer, 2) 6 M urea, 10 mM Tris, pH 8.0, 5 μg/ml bovine albumin, 0.2% Triton X-100; and 3) 50 mM Tris pH 7.5. The bound proteoglycans were eluted with 4 M guanidine-HCl, 50 mM NaOAc, pH 5.8, 5 μg/ml bovine albumin, 0.2% Triton X-100 and collected in 1 ml fractions. All fractions were quantified by liquid scintillation counting on a Beta Counter LS6500 (Beckman Coulter) with Ready Safe cocktail (Beckman Coulter).

Immunofluorescence and Lectin Binding

Cells were seeded on glass cover slips and cultured for 24 h before exposing to either control or ROS media for 48 h, and fixed in 2% paraformaldehyde for 10 min. Coverslips were then incubated either in blocking solution (5% FCS and 0.05% Tween20 in PBS) followed by antibody incubation for HS (1:500; HepSS-1, US Biologicals, Swampscott, MA) or directly with FITC-conjugated wheat germ agglutinin (WGA, from *Triticum vulgare*) lectin (Sigma-Aldrich, St. Louis, MO) at 2 μl/ml for 30 min. WGA (binds to the carbohydrate moieties N-acetyl glucosamine and N-acetyl neuraminic acid on glycocalyx constituents). Nuclear staining was demonstrated using 4,6-diamidino-2-phenylindole (DAPI). Coverslips were examined using a Leitz DMRB fluorescence microscope (Leica, Solms, Germany). Fluorescence intensity was quantified using a fluorescence plate reader as previously described [14].

Alcian Blue Dye Binding Assay for Quantitation of Sulphated GAG

GEnC were treated with 100 μM H₂O₂ or vehicle in serum free media for 1 h. Conditioned media were collected and precipitated in 95% ethanol containing 1% potassium acetate. After centrifugation at 500 g and 4 degree C for 10 min the pellet was resuspended in 100 μl PBS. A 50 μl sample was incubated with 200 μl alcian blue solution for 15 min at room temperature. Absorbance was then read at 490 nm. The ionic interaction between the cationic dye (Alcian blue) and the negatively charged GAG is proportional to the number of negative charges present. The concentration of sulphated GAGs in the samples was quantitated using a chondroitin sulphate standard curve (0.02–0.313 μg/ml).

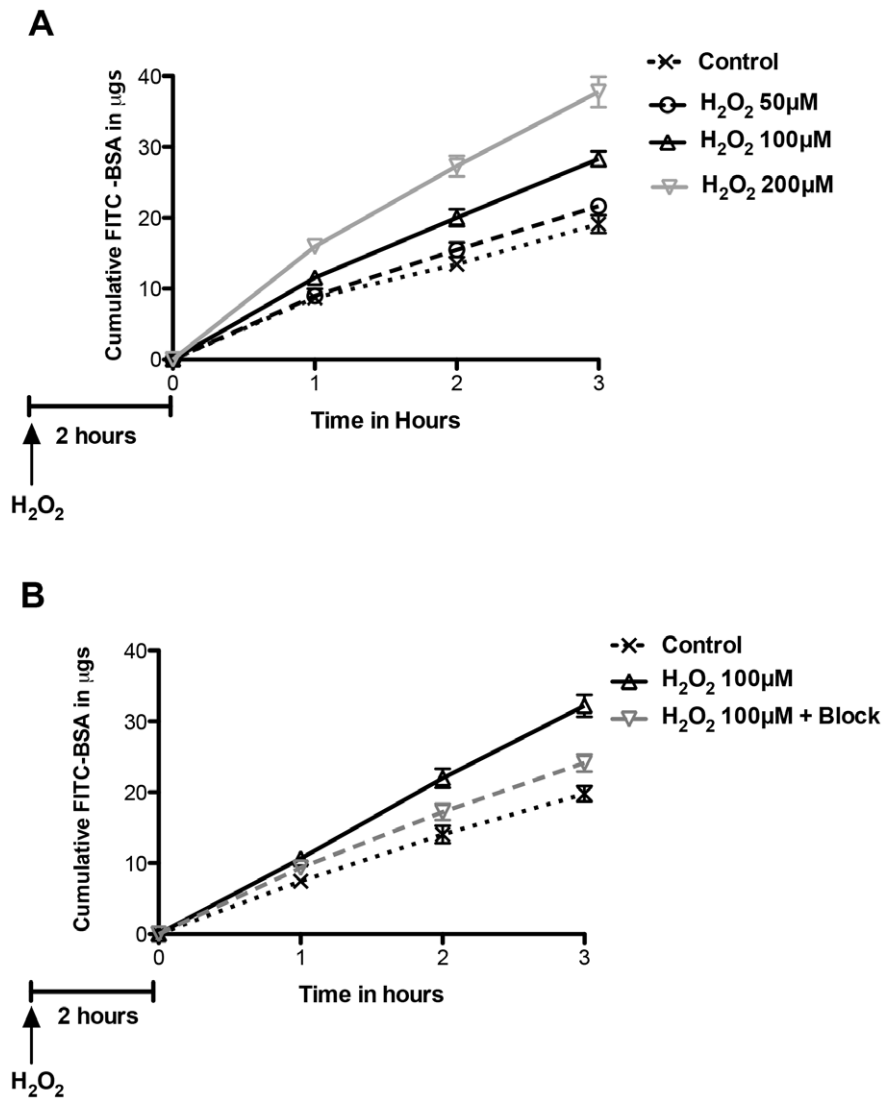


Figure 7. Changes in albumin passage after ROS. **A** Graph showing cumulative passage of fluorescein labeled albumin (Y-axis) across GEnC monolayers over time (X-axis). Analysis was performed after a delay of 120 min after addition of H₂O₂ to allow for recovery of TEER of GEnC monolayers. GEnC exposed to H₂O₂ show a dose dependant increase in passage of albumin compared to controls ($n=6$, $p<0.001$ for effect of treatment, 2-way ANOVA) **B** Graph showing data from of a separate experiment confirming the significant increase in passage of labeled albumin across GEnC monolayers when exposed to H₂O₂ at 100 μ M. This effect can be partially blocked when GEnC were pre-treated with free radical scavengers, catalase and superoxide dismutase. ($n=11$, $p<0.05$ by 2 way ANOVA; control vs H₂O₂100 μ M, and H₂O₂100 μ M vs H₂O₂100 μ M+block using bonferroni analysis).

doi:10.1371/journal.pone.0055852.g007

Measurement of Trans-endothelial Electrical Resistance

Trans-endothelial Electrical Resistance (TEER) was measured using an automated bioimpedance sensing system (ECISTM; Applied Biophysics Inc, NY) as described previously [14]. GEnC were seeded in 8 well, 10 electrode per well arrays (8W10E) supplied by the manufacturer. 100 μ M of H₂O₂ was added to the treatment wells at time point zero. The resistance is reported in Ω and the measurement from each well, at a given time point, is an average from 10 electrodes.

Measurement of Transendothelial Protein Passage

GEnC were seeded on polycarbonate supports (0.4 μ m pore size, 0.5 cm^2 surface area) in tissue-culture inserts (1 cm diameter; Nalge Nunc International, Rochester, NY) and treated with ROS or control media as above for 2 h prior to measuring passage of

FITC-labeled bovine serum albumin (BSA, Sigma) across the monolayer as described previously [14]. Briefly, the medium in the insert was replaced with 500 μ l of SFM containing 0.5 mg/ml FITC-BSA; that in the well was replaced with 500 μ l of SFM containing 0.5 mg/ml unlabeled BSA (Sigma). At 1, 2, and 3 h, 100 μ l aliquots were removed and replaced with 100 μ l of SFM containing unlabeled BSA (0.5 mg/ml). The fluorescence of the aliquots was measured as above, and the cumulative amount of FITC-BSA passing through the monolayer was calculated by reference to a set of standard dilutions.

Statistical Analyses

Graph Pad Prism-4 statistical software package (Graph Pad Software Inc. San Diego, CA) was used for all analyses, including

standard error of mean (SEM) t-tests and ANOVA. $P < 0.05$ was taken to indicate statistical significance.

Author Contributions

Conceived and designed the experiments: AS SCS VF RDR GIW BH PWM. Performed the experiments: AS RDR RRF VF ID ECW. Analyzed

the data: AS VF RDR RRF ID SCS PWM. Contributed reagents/materials/analysis tools: AS RDR ID RRF GIW SCS BH. Wrote the paper: AS SCS PWM.

References

1. Franco M, Cooper RS, Bilal U, Fuster V (2011) Challenges and opportunities for cardiovascular disease prevention. *Am J Med* 124: 95–102.
2. Stehouwer CD, Smulders YM (2006) Microalbuminuria and risk for cardiovascular disease: Analysis of potential mechanisms. *J Am Soc Nephrol* 17: 2106–2111.
3. Amann K, Wanner C, Ritz E (2006) Cross-talk between the kidney and the cardiovascular system. *J Am Soc Nephrol* 17: 2112–2119.
4. Gerstein HC, Mann JF, Yi Q, Zinman B, Dinnan SF, et al. (2001) Albuminuria and risk of cardiovascular events, death, and heart failure in diabetic and nondiabetic individuals. *JAMA* 286: 421–426.
5. Satchell SC, Tooke JE (2008) What is the mechanism of microalbuminuria in diabetes: a role for the glomerular endothelium? *Diabetologia* 51: 714–725.
6. Harrison D, Griendling KK, Landmesser U, Hornig B, Drexler H (2003) Role of oxidative stress in atherosclerosis. *Am J Cardiol* 91: 7A–11A.
7. Harrison DG, Cai H, Landmesser U, Griendling KK (2003) Interactions of angiotensin II with. *J Renin Angiotensin Aldosterone Syst* 4: 51–61.
8. Forbes JM, Coughlan MT, Cooper ME (2008) Oxidative stress as a major culprit in kidney disease in diabetes. *Diabetes* 57: 1446–1454.
9. Brenner BM, Bohrer MP, Baylis C, Deen WM (1977) Determinants of glomerular permselectivity: Insights derived from observations in vivo. *Kidney Int* 12: 229–237.
10. Deen WM, Lazzara MJ, Myers BD (2001) Structural determinants of glomerular permeability. *Am J Physiol Renal Physiol* 281: F579–596.
11. Haraldsson B, Nyström J, Deen WM (2008) Properties of the glomerular barrier and mechanisms of proteinuria. *Physiol Rev* 88: 451–487.
12. Satchell SC, Tasman CH, Singh A, Ni L, Geelen J, et al. (2006) Conditionally immortalized human glomerular endothelial cells expressing fenestrations in response to VEGF. *Kidney Int* 69: 1633–1640.
13. Ballermann BJ, Stan RV (2007) Resolved: capillary endothelium is a major contributor to the glomerular filtration barrier. *J Am Soc Nephrol* 18: 2432–2438.
14. Singh A, Satchell SC, Neal CR, McKenzie EA, Tooke JE, et al. (2007) Glomerular endothelial glycocalyx constitutes a barrier to protein permeability. *J Am Soc Nephrol* 18: 2885–2893.
15. Satchell SC, Braet F (2009) Glomerular endothelial cell fenestrations: an integral component of the glomerular filtration barrier. *Am J Physiol Renal Physiol* 296: F947–956.
16. Jeansson M, Haraldsson B (2006) Morphological and functional evidence for an important role of the endothelial cell glycocalyx in the glomerular barrier. *Am J Physiol Renal Physiol* 290: F111–116.
17. Hjalmarsson C, Johansson BR, Haraldsson B (2004) Electron microscopic evaluation of the endothelial surface layer of glomerular capillaries. *Microvasc Res* 67: 9–17.
18. Reitsma S, Slaaf DW, Vink H, van Zandvoort MA, oude Egbrink MG (2007) The endothelial glycocalyx: composition, functions, and visualization. *Pflugers Arch* 454: 345–359.
19. Mulivor AW, Lipowsky HH (2004) Inflammation- and ischemia-induced shedding of venular glycocalyx. *Am J Physiol Heart Circ Physiol* 286: H1672–1680.
20. Henry CB, Duling BR (2000) TNF-alpha increases entry of macromolecules into luminal endothelial cell glycocalyx. *Am J Physiol Heart Circ Physiol* 279: H2815–2823.
21. Moseley R, Waddington RJ, Embery G (1997) Degradation of glycosaminoglycans by reactive oxygen species derived from stimulated polymorphonuclear leukocytes. *Biochim Biophys Acta* 1362: 221–231.
22. Adachi T, Fukushima T, Usami Y, Hirano K (1993) Binding of human xanthine oxidase to sulphated glycosaminoglycans on the endothelial-cell surface. *Biochem J* 289 (Pt 2): 523–527.
23. Becker M, Menger MD, Lehr HA (1994) Heparin-released superoxide dismutase inhibits postischemic leukocyte adhesion to venular endothelium. *Am J Physiol* 267: H925–930.
24. Shasby DM, Lind SE, Shasby SS, Goldsmith JC, Hunninghake GW (1985) Reversible oxidant-induced increases in albumin transfer across cultured endothelium: alterations in cell shape and calcium homeostasis. *Blood* 65: 605–614.
25. Kevil CG, Ohno N, Gute DC, Okayama N, Robinson SA, et al. (1998) Role of cadherin internalization in hydrogen peroxide-mediated endothelial permeability. *Free Radic Biol Med* 24: 1015–1022.
26. Siflinger-Birnboim A, Lum H, Del Vecchio PJ, Del Vecchio PJ, Malik AB (1996) Involvement of Ca²⁺ in the H₂O₂-induced increase in endothelial permeability. *Am J Physiol* 270: L973–978.
27. Rops AL, van der Vlag J, Lensen JF, Wijnhoven TJ, van den Heuvel LP, et al. (2004) Heparan sulfate proteoglycans in glomerular inflammation. *Kidney Int* 65: 768–785.
28. Moseley R, Waddington R, Evans P, Halliwell B, Embery G (1995) The chemical modification of glycosaminoglycan structure by oxygen-derived species in vitro. *Biochim Biophys Acta* 1244: 245–252.
29. Edge AS, Spiro RG (2000) A specific structural alteration in the heparan sulphate of human glomerular basement membrane in diabetes. *Diabetologia* 43: 1056–1059.
30. Halliwell B, Clement MV, Long LH (2000) Hydrogen peroxide in the human body. *FEBS Lett* 486: 10–13.
31. Witting PK, Rayner BS, Wu BJ, Ellis NA, Stocker R (2007) Hydrogen peroxide promotes endothelial dysfunction by stimulating multiple sources of superoxide anion radical production and decreasing nitric oxide bioavailability. *Cell Physiol Biochem* 20: 255–268.
32. Yoshioka T, Ichikawa I, Fogo A (1991) Reactive oxygen metabolites cause massive, reversible proteinuria and glomerular sieving defect without apparent ultrastructural abnormality. *J Am Soc Nephrol* 2: 902–912.
33. Andersson M, Nilsson U, Hjalmarsson C, Haraldsson B, Nyström JS (2007) Mild renal ischemia-reperfusion reduces charge and size selectivity of the glomerular barrier. *Am J Physiol Renal Physiol* 292: F1802–1809.
34. Tay M, Comper WD, Vassiliou P, Glasgow EF, Baker MS, et al. (1990) The inhibitory action of oxygen radical scavengers on proteinuria and glomerular heparan sulphate loss in the isolated perfused kidney. *Biochem Int* 20: 767–778.
35. Raats CJ, Bakker MA, van den Born J, Berden JH (1997) Hydroxyl radicals depolymerize glomerular heparan sulfate in vitro and in experimental nephrotic syndrome. *J Biol Chem* 272: 26734–26741.
36. Foley RN, Parfrey PS, Sarnak MJ (1998) Clinical epidemiology of cardiovascular disease in chronic renal disease. *Am J Kidney Dis* 32: S112–119.
37. Ysebaert DK, De Greef KE, Vercauteren SR, Ghielli M, Verpooten GA, et al. (2000) Identification and kinetics of leukocytes after severe ischaemia/reperfusion renal injury. *Nephrol Dial Transplant* 15: 1562–1574.
38. Granger DN, Hollwarth ME, Parks DA (1986) Ischemia-reperfusion injury: role of oxygen-derived free radicals. *Acta Physiol Scand Suppl* 548: 47–63.
39. Alonso de Vega JM, Diaz J, Serrano E, Carbonell LF (2002) Oxidative stress in critically ill patients with systemic inflammatory response syndrome. *Crit Care Med* 30: 1782–1786.