

RESEARCH

Open Access



# 2D-DIGE proteomic analysis of *vastus lateralis* from COPD patients with low and normal fat free mass index and healthy controls

Ramzi Lakhdar<sup>1</sup>, Ellen M. Drost<sup>1</sup>, William MacNee<sup>1</sup>, Ricardo Bastos<sup>2†</sup> and Roberto A. Rabinovich<sup>1\*†</sup>

## Abstract

**Background:** Chronic obstructive pulmonary disease (COPD) is associated with several extra-pulmonary effects of which skeletal muscle wasting is one of the most common and contributes to reduced quality of life, increased morbidity and mortality. The molecular mechanisms leading to muscle wasting are not fully understood. Proteomic analysis of human skeletal muscle is a useful approach for gaining insight into the molecular basis for normal and pathophysiological conditions.

**Methods:** To identify proteins involved in the process of muscle wasting in COPD, we searched differentially expressed proteins in the *vastus lateralis* of COPD patients with low fat free mass index (FFMI), as a surrogate of muscle mass (COPD<sub>L</sub>,  $n = 10$ ) (FEV<sub>1</sub>  $33 \pm 4.3\%$  predicted, FFMI  $15 \pm 0.2 \text{ Kg.m}^{-2}$ ), in comparison to patients with COPD and normal FFMI (COPD<sub>N</sub>,  $n = 8$ ) and a group of age, smoking history, and sex matched healthy controls (C,  $n = 9$ ) using two-dimensional fluorescence difference in gel electrophoresis (2D-DIGE) technology, combined with mass spectrometry (MS). The effect of silencing DOT1L protein expression on markers of cell arrest was analyzed in skeletal muscle satellite cells (HSkMSCs) in vitro and assessed by qPCR and Western blotting.

**Results:** A subset of 7 proteins was differentially expressed in COPD<sub>L</sub> compared to both COPD<sub>N</sub> and C. We found an increased expression of proteins associated with muscle homeostasis and protection against oxidative stress, and a decreased expression of structural muscle proteins and proteins involved in myofibrillogenesis, cell proliferation, cell cycle arrest and energy production. Among these was a decreased expression of the histone methyltransferase DOT1L. In addition, silencing of the DOT1L gene in human skeletal muscle satellite cells in vitro was significantly related to up regulation of p21<sup>WAF1/Cip1</sup>/CDKN1A, a marker of cell arrest and ageing.

**Conclusions:** 2D-DIGE coupled with MS identified differences in the expression of several proteins in the wasted *vastus lateralis* that are relevant to the disease process. Down regulation of DOT1L in the *vastus lateralis* of COPD<sub>L</sub> patients may mediate the muscle wasting process through up regulation of markers of cell arrest and senescence.

**Keywords:** COPD, Skeletal muscle dysfunction/wasting, Proteomic analysis, 2D-DIGE, DOT1L, Ageing

\* Correspondence: roberto.rabinovich@ed.ac.uk

†Equal contributors

<sup>1</sup>ELGI Colt Laboratory, Centre for Inflammation Research, The Queen's Medical Research Institute, University of Edinburgh, 47 Little France Crescent, Edinburgh EH16 4TJ, Scotland, UK

Full list of author information is available at the end of the article



## Background

Chronic obstructive pulmonary disease (COPD) is characterized by airflow limitation that is not fully reversible [1], is usually progressive and associated with a chronic inflammatory response of the lungs to noxious particles or gases of which cigarette smoking is the most common risk factor [2].

COPD has significant systemic effects, among which muscle wasting is common, and has been extensively studied [3, 4]. Muscle wasting results in a loss of muscle strength [3, 5–8], contributes to reduced exercise capacity [9–12] and is a predictor of health related quality of life (HRQoL) [13] and survival [14, 15] independent of the degree of airflow limitation [12].

The mechanisms underlying weight loss and muscle wasting in COPD are not completely understood and are likely to be multi-factorial, including low physical activity in patients with a sedentary habit, oxidative stress and inflammation, among others [16, 17]. Results of a previous study of a microarray analysis of the *vastus lateralis* of COPD patients with muscle wasting, showed over expression of the cyclin-dependent kinase inhibitor 1A (p21<sup>WAF1/Cip1</sup>/CDKN1A) and changes in expression of genes associated with cell cycle arrest, growth regulation and energy production [18]. These results suggest that cell senescence may play a role in muscle atrophy in COPD [18].

There is evidence that COPD is a disease of accelerated ageing [19]. Animal models of premature ageing show structural changes in the lung that resemble those in COPD and also show skeletal muscle abnormalities [20] that occur with ageing [21]. It has been reported that limb muscles of patients with COPD have increased number of senescent satellite cells and a decreased muscle regenerative capacity, compromising the maintenance of muscle mass in these individuals [22]. Thus premature cellular senescence and subsequent exhaustion of the muscles regenerative potential may be related to the muscle abnormalities that are characteristic of these patients.

Proteomic analysis is a powerful tool for global evaluation of protein expression, and a useful approach, coupled with other functional genomic approaches, to gain insight into the molecular basis for normal and pathophysiological conditions [23, 24]. The two-dimensional fluorescence difference in gel electrophoresis (2D-DIGE) technology is now recognized as an accurate method to determine and quantify proteins [25, 26], and therefore to assess changes in protein expression associated with disease phenotypic states.

With the aim of identifying proteins that are potentially involved in the process of muscle wasting in COPD, we searched for differentially expressed proteins in the *vastus lateralis* of COPD patients with low fat free mass index (FFMI), as a surrogate of muscle mass, (COPD<sub>L</sub>) in

comparison to patients with COPD and normal FFMI (COPD<sub>N</sub>) and a group of age and sex matched healthy controls (C) using 2D-DIGE combined with mass spectrometry (MS).

Among the proteins identified, the histone methyltransferase DOT1L was found to be down-regulated in COPD<sub>L</sub>. We hypothesize that down-regulation of DOT1L mediates cell senescence through the up regulation of molecules involved in cell arrest (i.e. p21<sup>WAF1/Cip1</sup>/CDKN1A). To test this hypothesis, DOT1L gene was silenced in vitro in Human Skeletal Muscle Satellite Cells and mRNA and protein levels of p21<sup>WAF1/Cip1</sup>/CDKN1A was assessed.

## Methods

### Study Group

Eighteen stable patients with COPD, ten with low FFMI (COPD<sub>L</sub>) and eight with normal FFMI (COPD<sub>N</sub>), and nine age, gender and smoking status-matched healthy subjects with normal FFMI were included in the present study (Table 1). The COPD patients had a history compatible with the disease: at least 10 pack/years of smoking and evidence of chronic airflow limitation (post bronchodilator FEV<sub>1</sub>/FVC < 0.7) [27]. All participants were informed of any risks and discomfort associated with the study, and written informed consent was obtained. The study was approved by the Lothian Regional Ethics Committee.

### Measurements

Spirometry was measured (Alpha Spirometer; Vitalograph, Buckingham, UK) according to American Thoracic Society/European Respiratory Society (ATS/ERS) standards in all subjects [28] before and after the administration of 2.5 mg of nebulised salbutamol. Arterial blood gases were measured (Ciba Corning 800, USA). Body composition was estimated by a bioelectric impedance device (TBF-300 M, TANITA Corporation, Tokyo, Japan). Low FFMI was defined as <16 kg.m<sup>-2</sup> for male and < 15 kg.m<sup>-2</sup> for female COPD patients [29]. As a measure of exercise tolerance all participants performed an encouraged 6MWT according to ATS guidelines [30]. Muscle strength was assessed as the maximal isometric quadriceps voluntary contraction (QMVC) using a strain gauge dynamometer (Chatillon® K-MSC 500, Ametek, Florida) [31]. HRQoL was assessed using the St. George's Respiratory Questionnaire [32]. Physical activity level was assessed using the Voorrips physical activity questionnaire in the whole population participating in the study [33]. In COPD patients activities of daily living were assessed by the London Chest Activity of Daily Living Scale (LCADL) [34].

**Table 1** Characteristics of the study groups

	Controls		COPD <sub>N</sub>		COPD <sub>L</sub>		p-value
M/F	8/1	A	6/2	A	8/2	A	ns
Age (Years)	68.8 ± 4.4	A	68.6 ± 5.2	A	66.7 ± 5.9	A	ns
Height (m)	1.74 ± 0.08	A	1.70 ± 0.09	A	1.67 ± 0.08	A	ns
Weight (Kg)	89.93 ± 15.63	A	76.1 ± 12.65	A	51.71 ± 5.71	B	<0.001
BMI (Kg.m <sup>-2</sup> )	29.3 ± 4.6	A	26.2 ± 2.4	A	18.9 ± 1.9	B	<0.0001
FFM	62.55 ± 11.35	A	54.13 ± 10.13	AB	43 ± 5.69	C	<0.001
FFMI (Kg.m <sup>-2</sup> )	20.5 ± 2.3	A	18.6 ± 1.6	B	15.3 ± 0.7	C	<0.0001
Active/ex-smokers	1/8	A	2/6	A	2/8	A	ns
Pack/Year	30.9 ± 15	A	50.9 ± 23.1	A	64.3 ± 39.8	A	ns
Average cessation (years)	24.6 ± 16.8	A	7.9 ± 7.6	B	5.4 ± 7.4	B	<0.05
Age at smoking cessation (years)	44.2 ± 15.3	A	60.8 ± 8.3	B	61.3 ± 7.8	B	0.0039
mMRC			2.1 ± 1.4		3.1 ± 1.1		ns
FEV <sub>1</sub> (L)	2.9 ± 0.5	A	1.2 ± 0.5	B	0.9 ± 0.4	B	<0.0001
FEV <sub>1</sub> (% pred)	98.6 ± 12.1	A	44.3 ± 19.9	B	33.2 ± 13.7	B	<0.0001
FVC (L)	4 ± 0.7	A	2.9 ± 1.1	B	2.6 ± 1	B	<0.01
FVC (% pred)	105.8 ± 12.4	A	85.6 ± 31.5	AB	76.5 ± 18.2	B	<0.05
FEV <sub>1</sub> /FVC	0.7 ± 0	A	0.4 ± 0.1	B	0.3 ± 0.1	B	<0.0001
PaO <sub>2</sub> (mmHg)	74.3 ± 8	A	68.5 ± 9.7	A	75.2 ± 13.1	A	ns
PaCO <sub>2</sub> (mmHg)	41.2 ± 2.4	A	41 ± 3.9	A	43.1 ± 5.2	A	ns
Physical Activity (V)	11.9 ± 5.1	A	6.3 ± 6	AB	1.1 ± 1	B	<0.0005
Physical Activity (L)			33.1 ± 16	A	43.5 ± 10.4	A	ns
QMVC (N)	372.3 ± 89	A	317.9 ± 89.9	A	202.2 ± 51.8	B	<0.005
6MWD (m)	569.3 ± 62.4	A	390 ± 170.2	B	327 ± 134.1	B	<0.005
Exacerbation			1.8 ± 1.5	A	4 ± 2.2	B	<0.05
BODE			4.3 ± 3	A	6.2 ± 2.3	A	ns
SGRQ Symptoms			62.9 ± 10.1	A	78.3 ± 15.2	B	<0.05
SGRQ Activity			56.9 ± 31	A	86.2 ± 13.4	B	<0.05
SGRQ Impact			37.8 ± 25	A	59.5 ± 20.8	A	ns
SGRQ Total			47.9 ± 21.8	A	70.7 ± 16.4	B	<0.005
Type I Fibre (%)	38.5 ± 11	A	26 ± 9.6	A	24.7 ± 13.5	A	ns
Type II area (μ2)	2564 ± 783.8	AB	3096 ± 893.6	A	2034 ± 498.8	B	<0.05

**Abbreviations:** COPD<sub>N</sub> COPD patients with normal, FFMI COPD<sub>L</sub> patients with COPD with low FFMI, BMI Body mass index, FFM fat free mass, FFMI fat free mass index, MRC medical research council dyspnoea score, FEV<sub>1</sub> forced expiratory volume in the first second, FVC forced vital capacity, PaO<sub>2</sub> arterial oxygen partial pressure, PaCO<sub>2</sub> arterial carbon dioxide partial pressure, Physical Activity (V) Voorrips Questionnaire, Physical activity (L) London Chest Activity of Daily Living Scale, QMVC quadriceps maximal voluntary contraction, 6MWD six minute walking distance, SGRQ St. George's Respiratory Questionnaire, ns not significant, NA not applicable. Comparisons among groups were done using ANOVA and Student-Newman-Keuls as a post-hoc test. Differences among the three different groups were stated using letters A,B and C where sharing a letter implies no differences between these groups and having a different letter implies a statistical difference in the post-hoc test

### Muscle biopsy

An open muscle biopsy of the *vastus lateralis* (~0.8 g) was taken in a Clinical Research Facility bed area using a standard surgical technique [18].

### Fibre type typification

Paraffin sections (5μm) were de-waxed and re-hydrated through graded ethanol using standard procedures. Sections were placed in 250 ml of Novocastra pH8

retrieval buffer and subjected to antigen retrieval in a de-cloaking chamber (Biocare Medical, USA) using a protocol described elsewhere [35].

### *Vastus lateralis* muscle protein extraction

*Vastus lateralis* muscle (~0.1 g) from each sample was cut into small pieces with a scalpel and transferred in metal bead tubes. 50 μl of extracting buffer (0.3% Sodium carbonate, 0.5% Sodium hydrogen carbonate

and 0.6% CHAPS, containing phosphatase inhibitors, protease inhibitors and benzamide) was added to 15 mg of each tissue sample. Protein concentration was determined by the Bradford method (Bio-Rad Laboratories, Hercules, CA).

**Two-dimensional difference gel electrophoresis (2D-DIGE)**

2D-DIGE analysis including protein labeling, 2D-electrophoresis, gel analysis and identification of proteins of interest by mass spectrometry were performed by Applied Biomics (Hayward, CA) using established protocols (Fig. 1).

**Cell culture**

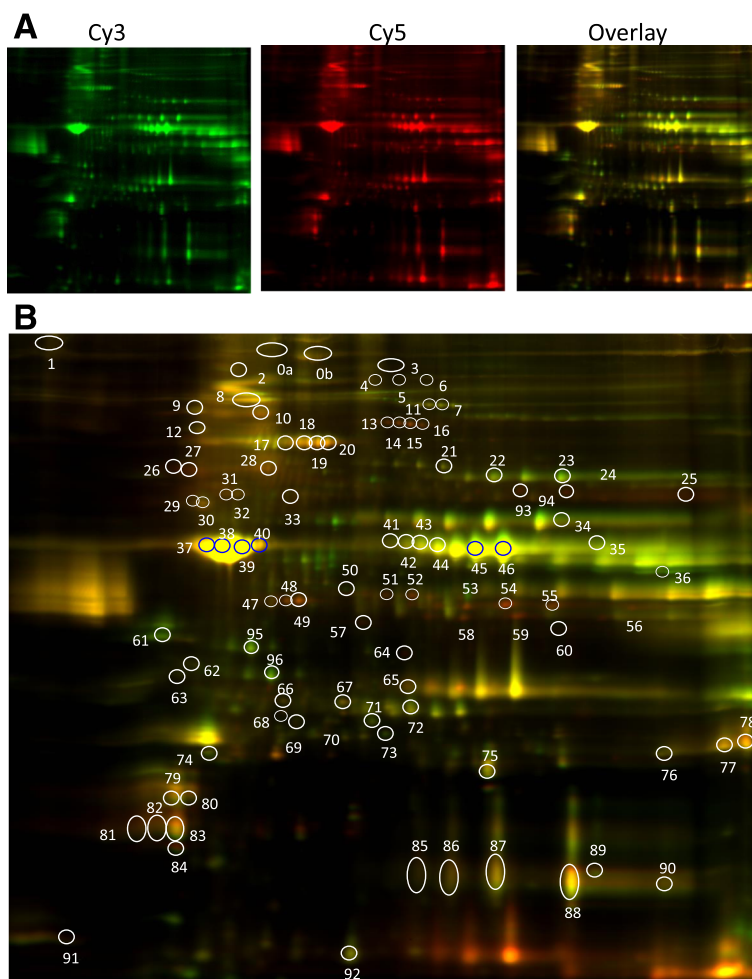
Human Skeletal Muscle Satellite Cells (HskMSCs) were purchased from Innoprot (SKELETAL MUSCLE INNPROFILE™, REF: P10976). These cells were isolated

by ScienCell Research Laboratories from human muscle of the pectoral girdle. Cell culture media kits were purchased from the same company (Innoprot REF: P60132). The satellite cells were grown to confluent myoblasts in poly-L-lysine coated flasks (2 µg/cm<sup>2</sup>, T-75 flask) according to the manufacturer’s guide. Myoblasts were differentiated into myotubes as previously described [36].

**DOT1L gene knockdown in HskMSC by siRNA**

*siRNA design*

For siRNA-mediated down-regulation of DOT1L, a specific validated target sequence was purchased from Ambicon, Life Technologies (Silencer® siRNA (DOT1L, siRNA ID: 112262) and transient transfection of siRNA was performed. siRNA experiments were conducted using a stock solution of 10uM siRNA at a final concentration of 30 pmol duplex siRNA per well in a six well



**Fig. 1** *Vastus lateralis* protein expression profiling by 2D DIGE. Representative 2D-DIGE images (from Gel1) showing differentially expressed protein spots. **a** 2D images of two samples; COPD<sub>L</sub> and COPD<sub>N</sub> subjects; respectively labelled with Cy3 (green spots, COPD<sub>N</sub>) and Cy5 (red spots, COPD<sub>L</sub>) and the corresponding overlap, generated by ImageQuant software (pH range 4–9 from left to right in the horizontal dimension; MW range 15 kDa–150 kDa from bottom to top in the vertical dimension). **b** Images were further analyzed by DeCyder Image analysis software to detect the differentially expressed protein spots (white circles). Purple circles correspond to spots not include in the final selection

plate following the manufacture protocol. For transfection into the cells, Lipofectamine® 2000 Transfection Reagent (Ambicon, Life Technologies) was used according to the manufacturer's protocol.

#### **siRNA cell transfection**

Human skeletal muscle satellite cells were transferred in six well plates at 2–3  $10^4$  cells/cm<sup>2</sup>. At 70–80% confluency, myoblasts were transfected following the manufacturer's guide and as previously described [37, 38].

#### **Quantitative RT-PCR**

Total cellular RNA was prepared from the cells using an NucleoSpin® RNA kit (Macherey-Nagel, Fisher Scientific UK) and 0.5 µg of the RNA was then reverse transcribed to cDNA using a High Capacity cDNA Reverse Transcription Kit (Applied Biosystems). For quantitative RT-PCR analysis, the cDNA was combined with gene-specific forward and reverse primers for DOT1L and p21<sup>WAF1/Cip1</sup>/CDKN1A a SYBR Green PCR master mix and subjected to real time fluorescence detection PCR using an ABI Prism 7900 Sequence Detection System (Applied Biosystems, Foster City, CA, USA).

#### **Western Blot Analysis**

Cells were harvested and protein concentration was determined. DOT1L and p21<sup>WAF1/Cip1</sup> protein level was determined by immunoblotting using antibodies against DOT1L (Novus Biologicals, NB100-40845) and p21<sup>WAF1/Cip1</sup> (ab79601) (Abcam, Bristol, UK).

#### **Statistical analysis**

For 2D-DIGE proteomic analysis, the data were analysed using Student-*t* test to compare between the patient groups (COPD<sub>N</sub>, COPD<sub>L</sub>) and the healthy controls. Gene expression q-PCR data and immunoblotting results for DOT1L and p21<sup>WAF1/Cip1</sup>/CDKN1A after gene knockdown are expressed as mean ± SEM. Comparisons between the groups were performed using Mann–Whitney U test for non-parametric variables. Correlation analysis between variables was conducted using Pearson's correlation index for continuous variables. A *p* value <0.05 was taken as statistically significant. The statistics were conducted using the statistical package SAS version 9.3 (SAS Institute Inc, Cary, NC, USA).

#### **Results**

The anthropometric characteristics and pulmonary function data of study subjects are depicted in Table 1. Both groups of COPD patients had chronic airflow limitation compared to healthy controls (C) all of who had normal spirometry, but there were no differences in spirometry between COPD<sub>N</sub> and COPD<sub>L</sub>.

Compared to COPD<sub>N</sub>, COPD<sub>L</sub> had significantly lower BMI, FFM and FFMI (as expected by the study design), poorer HRQoL with higher values in all of the domains of the St. George's respiratory questionnaire, and worse muscle function as assessed by QMVC. No statistical differences in physical activity measured by the Voorrips questionnaire (PAV) or activities of daily living (ADL) assessed with the LCADL (PAL) were seen between the COPD groups although a trend towards lower PAL was observed in COPD<sub>L</sub>.

Both COPD groups showed a redistribution of muscle fibre type with a higher proportion of type II fibres and a lower proportion of type I in comparison to healthy controls; however this did not reach statistical significance. Type II fibre area was significantly reduced in COPD<sub>L</sub> in comparison with COPD<sub>N</sub> (Table 1).

#### **Proteomic analysis**

To search for differentially expressed proteins (DEPs), we performed three pair-wise class comparisons: COPD<sub>L</sub> vs. COPD<sub>N</sub>, COPD<sub>L</sub> vs. C and COPD<sub>N</sub> vs. C. A list with 96 protein spots was selected from the analysis using the DeCyder software. These spots corresponded to the most prominent changes in terms of fold-change and/or statistical significance that could be detected. Among this list, there were some significant changes in protein expression in the paired groups (*p* < 0.05): 50 spots were differentially expressed comparing COPD<sub>N</sub> and Controls, whereas, 41 spots were found differentially expressed comparing COPD<sub>L</sub> and the Control group and 37 spots when comparing COPD<sub>L</sub> and COPD<sub>N</sub> (Additional file 1: Table S1).

In order to select the most relevant DEPs related to muscle wasting in COPD, we focused on the list of 37 DEPs between COPD<sub>L</sub> and COPD<sub>N</sub>. To strengthen the biological relevance of these proteins, we further selected from this list 20 spots that were also differentially expressed between COPD<sub>L</sub> and C. We further excluded proteins that were differentially expressed between COPD<sub>N</sub> and the control group, as both subgroups have normal muscle bulk and these proteins may not be relevant to the process of muscle wasting. The number of spots was therefore reduced to 11.

These spots were further extracted from the gel and the proteins identified by mass spectrometry (Table 2).

These spots represented 7 proteins (2 proteins were represented by three different spots). Among these, 3 proteins were up regulated; Serum albumin (ALBU), Heat shock protein beta-1 (HSPB1) and Alpha-crystallin B chain (CRYAB) and 4 proteins Histone-lysine N-methyltransferase, H3 lysine-79 specific (DOT1L), Troponin T, slow skeletal muscle (TNNT1), Myozenin-1 (MYOZ1) and Myosin light chain 1/3, skeletal muscle isoform (MYL1) were down regulated (Table 2).



**Table 2** Proteins differentially expressed between COPD<sub>L</sub>vs COPD<sub>N</sub>and COPD<sub>L</sub>vs C groups

Assigned spot number	Protein name	Protein symbol	COPD <sub>L</sub> vs COPD <sub>N</sub>		COPD <sub>L</sub> vs C		Protein relevant function
			P value	Av. Ratio	P value	Av. Ratio	
17	Serum albumin	ALBU	<b>0.0053</b>	1.67	<b>0.022</b>	1.36	Transportation of substances in the blood.
67	Up regulated	Heat shock protein beta-1	<b>0.011</b>	1.3	<b>6.7E-05</b>	1.48	Heat shock, ROS scavenger
75		Alpha-crystallin B chain	<b>0.017</b>	1.38	<b>0.00026</b>	1.53	Heat shock, muscle homeostasis
1		Histone-lysine N-methyltransferase, H3 lysine-79 specific	<b>0.0065</b>	-2.25	<b>0.014</b>	-1.45	DNA repair, deficiency leads to cell arrest
91	Down regulated	Myosin light chain 1/3, skeletal muscle isoform	<b>0.049</b>	-2.13	<b>0.0048</b>	-2.38	Myosin light chain expressed in Type II fibres, muscle cell proliferation
48		Troponin T, slow skeletal muscle	<b>0.025</b>	-2.6	<b>0.023</b>	-2.21	Component of the thin filament of the sarcomere
60		Myozenin-1 OS = Homo sapiens	<b>0.00086</b>	-2.44	<b>0.029</b>	-1.63	Promote type II fibres, calcineurin-interacting proteins

Seven proteins were identified that full fill the criteria set for the analysis. Student t test was used to compare between different groups, *p*-value <0.05 significant (bold). Av. Ratio: Average. Ratio; fold change a positive value means increased ratio, a negative value means decreased ratio

The up-regulated proteins are involved in protection against oxidative stress (HSPB1) and in muscle homeostasis (CRYAB). Whereas, the down regulated protein are involved in cell cycle regulation (DOT1L), muscle cell proliferation (MYL1), type II fibres promotion (MYOZ1), and are components of the thin filament (TNNT1). DOT1L was down regulated with a significant fold change (FC) in COPD<sub>L</sub> compared with both COPD<sub>N</sub> (*P* value = 0.0065, FC = -2.25) and C (*P* value = 0.014, FC = -1.45).

#### DOT1L gene knockdown

In our previous microarray analysis we found a differential expression of genes related to premature ageing/cell cycle arrest [18]. Because down regulation of DOT1L has been reported in relation to cell cycle arrest, we explored the effect of silencing DOT1L on cell arrest markers in Human Skeletal Muscle Satellite Cells in vitro, in particular on p21<sup>WAF1/Cip1</sup>/CDKN1A that was found up-regulated in our previous study.

The results confirmed that the siRNA sequence led to significant reduction in DOT1L gene expression, and protein level (Fig. 2) and that the siRNA DOT1L reduced mRNA content was related to an up-regulation of p21<sup>WAF1/Cip1</sup>/CDKN1A gene expression and protein content (*P* < 0.05) (Fig. 3).

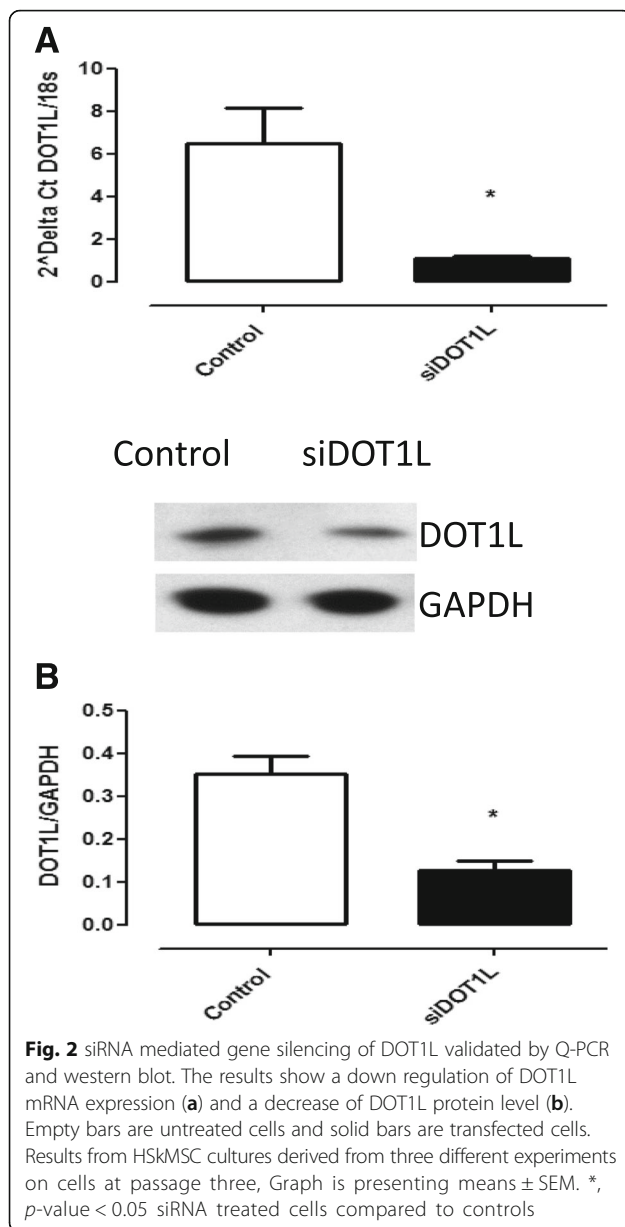
#### Discussion

This study shows changes in protein expression in *vastus lateralis* muscle of COPD patients with skeletal muscle wasting using the highly sensitive 2D-DIGE technique combined with mass spectrometry analysis. We identified up-regulated proteins associated with protection against oxidative stress and muscle homeostasis,

and down-regulated proteins involved in cell cycle arrest, growth regulation, energy production and muscle formation. Among the down-regulated proteins was the histone methyltransferase DOT1L, a critical regulator of the cell cycle. In addition, we showed that DOT1L gene silencing in human skeletal muscle satellite cells in vitro is significantly related to up regulation of p21<sup>WAF1/Cip1</sup>/CDKN1A, a marker of cell arrest and senescence.

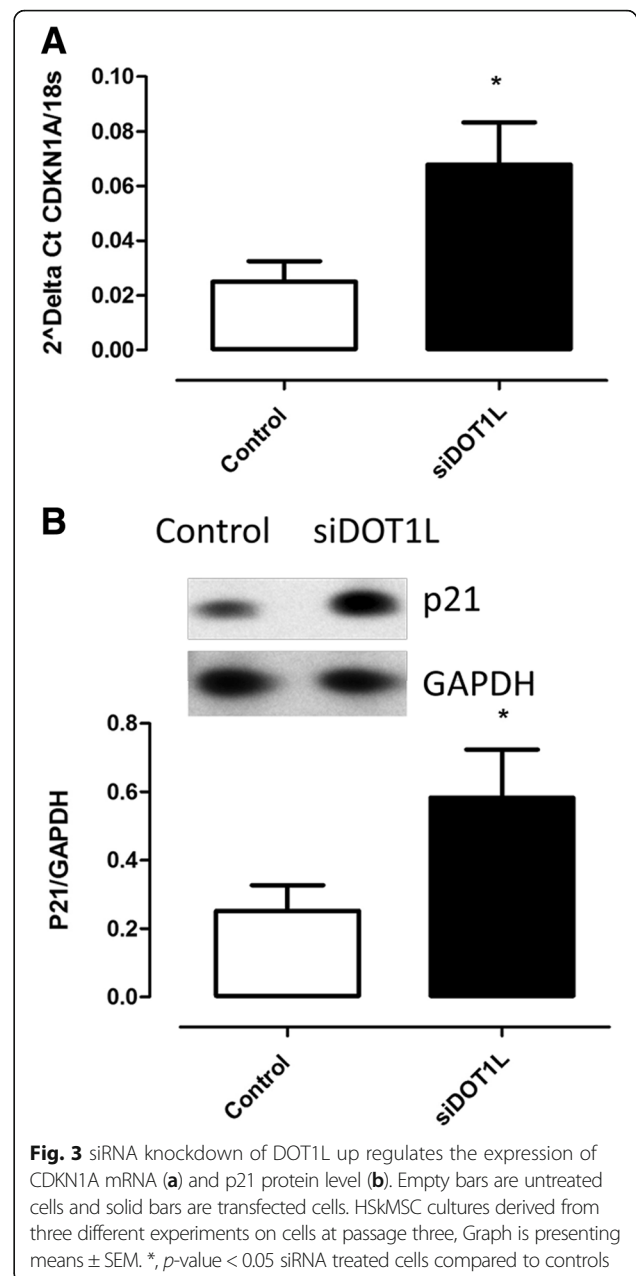
In this analysis, we selected a group of DEPs using restricted criteria to strengthen the biological relevance of these proteins in the process of muscle wasting based on: a) that they were differentially expressed between COPD<sub>L</sub> and COPD<sub>N</sub>, b) were also differentially expressed between COPD<sub>L</sub> and C, c) they were not differentially expressed between COPD<sub>N</sub> and C (both groups with normal FFMI) [18]. These criteria reduced the list of DEPs to a set of seven proteins identified by mass spectrometry potentially involved in the process of muscle wasting in COPD<sub>L</sub>.

One of the proteins whose expression was found significantly decreased in COPD<sub>L</sub> is DOT1L (disruptor of telomeric silencing-1), an evolutionarily conserved histone methyltransferase that methylates lysine 79 located within the globular domain of histone H3. Methylation of H3K79 is involved in the regulation of telomeric silencing, cellular development, cell-cycle checkpoint, DNA repair, and regulation of transcription [39, 40]. Several studies show that DOT1L is a critical regulator of the cell cycle [41, 42]. Overall, DOT1L is required to maintain genomic and chromosomal stability. It has been shown that deficiency of DOT1L leads to chromosomal miss-aggregation [43] and that this chromosomal instability leads to cell cycle arrest at the G1 phase and induced senescence,



thus disturbing proliferation of human cancer cells [43]. Furthermore, the transcription profiles of DOT1L-deficient mouse embryonic stem cells (ESCs) and their differentiated derivatives contain a high proportion of miss-regulated genes with known functions in cell cycle and cellular proliferation that may represent direct targets of DOT1L regulation [44].

We have previously shown, by different methodologies, an up-regulation of the cyclin-dependent kinase inhibitor p21<sup>WAF1/Cip1</sup> in COPD patients with muscle wasting [18]. p21<sup>WAF1/Cip1</sup> protein, encoded by the gene CDKN1A, binds to and inhibits the activity of several cyclin-dependent kinases (CDKs), and thus functions as a regulator of cell cycle progression [45]. In addition to



growth arrest, p21<sup>WAF1/Cip1</sup> can mediate cellular senescence [46, 47].

To test the potential association between down-regulation of DOT1L and up-regulation of p21<sup>WAF1/Cip1</sup> we used siRNA to silence DOT1L in human skeletal muscle satellite cells (HSkMSCs) and measured the effect on gene expression and protein levels of CDKN1A. Knock down of DOT1L in this cell line resulted in an up-regulation of CDKN1A gene expression and protein levels of p21<sup>WAF1/Cip1</sup>.

Our findings are in agreement with previous studies showing an association between DOT1L deficiency and inhibition of cell proliferation due to G0/G1 cell-cycle

arrest in MLL-AF9 [48]. A study investigating several cyclin-dependent kinase inhibitors (CKI), (INK4 (p16<sup>INK4a</sup>, p15<sup>INK4b</sup>, p18<sup>INK4c</sup>, and p19<sup>INK4d</sup>) and CIP/KIP (p21<sup>CIP/WAF1</sup>, p27<sup>KIP1</sup>, and p57<sup>KIP2</sup>)) in DOT1L deficient NCI-H1299 cells and A549 cells have shown that DOT1L deficiency up-regulated p21<sup>WAF1/Cip1</sup> expression, but down-regulated other CKIs [43]. The authors suggested that the transcriptional up-regulation of p21<sup>WAF1/Cip1</sup> in DOT1L-deficient A549 cells induced the hypophosphorylation of CDK2 and Rb, which inhibits the progression from G1 to S phase [43]. The mechanism by which the DOT1L down regulation interferes with the expression of specific CKIs remains to be elucidated. Also further investigation is needed to shed light on the mechanisms by which DOT1L-down regulation interacts with other factors associated with cell proliferation and cell cycle arrest and regulates senescence in COPD patients with muscle wasting.

In this study, we found an increase of the protein levels of HSPB1 and CRYAB in COPD<sub>L</sub>. HSPB1 participates in the regulation of apoptosis, protects the cell against oxidative stress, and is involved in the regulation of the cytoskeleton [49]. In turn HSPB1 has been related to better fatigue resistance [50] and has been shown to be up-regulated in animal models of diabetes-related muscle weakness [51]. Moreover, it has been reported that the chaperone effect of CRYAB on the cytoskeleton in relation to tubulin/microtubule, is a key mechanism for muscle adaptation, muscle differentiation and protection from atrophy [52]. Increased levels of molecular heat shock proteins reported in this study is in line with well documented evidence of oxidative and nitrosative stress in COPD patient's peripheral muscle [53–57], especially in patients with low body mass index (BMI) [57] and hypoxemia [53] and may reflect an attempt of the cell to defend itself against these insults.

Our results also revealed an up-regulation of ALBU and down-regulation of other structural proteins MYL1, TNNT1, and MYOZ1 in both COPD<sub>L</sub> compared to COPD<sub>N</sub> and COPD<sub>L</sub> compared to C. The latter is consistent with the fibre type distribution in our population, showing a tendency towards a decrease in Type I fibres, with an increase in the proportion of Type II fibres in the muscle in COPD<sub>L</sub>. The differential expression of structural proteins MYL1, TNNT1, MYOZ1 in our population further highlights the documented structural changes [58] in *vastus lateralis* muscle of COPD patients with muscle atrophy.

#### Limitation of the study

In spite of the efforts made in matching the populations, healthy control subjects present differences in fat free mass index (FFMI) compared to the COPD patients with normal FFMI. However, both groups (COPD<sub>N</sub> and C) have FFMI levels above what is considered normal in

these populations. No differences were seen in fat free mass (FFM) or BMI between these groups. As these groups were used to select biological relevant proteins related to muscle wasting from the DEPs between COPD<sub>N</sub> and COPD<sub>L</sub>, by excluding from this list those that were not differentially expressed between COPD<sub>N</sub> and C, we do not think that this affects the conclusions of the present study.

It is worthwhile mentioning that p21 was not identified as an up-regulated protein by the technology used in the present study. We cannot exclude that this protein is among the other differentially expressed proteins detected but still not identified by MS. Although unlikely, another possible explanation is that this protein is not included among the resolved spots in the 2D gels since p21 has a low molecular mass (18 kDa) and the theoretical MW range is 15 kDa-150 kDa from bottom to top. In more general terms, although the 2D-DIGE is a sensitive, accurate and reproducible technique, it faces the inherent limitations of gel-based proteomics, regarding the proteomic coverage. In any event, results previously published by our group have demonstrated, by different methodologies, an up-regulation of p21 both at the gene and protein level in COPD patients with muscle wasting [18].

#### Conclusions

Our study showed that 2D-DIGE coupled with MS is useful technique to identify differentially expressed proteins related to muscle wasting in patients with COPD. These results complement our previous findings on the transcriptome of these patients and strengthen the evidence that premature ageing, along with oxidative stress, may play a role in muscle wasting in COPD. p21<sup>WAF1/Cip1</sup>/CDKN1A might represent a target of DOT1L in *vastus lateralis* muscle of COPD patients.

#### Additional file

**Additional file 1:** A detailed methodology is provided: Table S1: Differentially expressed spots between different groups comparing COPD<sub>N</sub> vs C, COPD<sub>L</sub> vs C and COPD<sub>L</sub> vs COPD<sub>N</sub> using the twodimensional fluorescence difference in gel electrophoresis (2D-DIGE) technology. (DOCX 64 kb)

#### Abbreviations

2D-DIGE: Two-dimensional fluorescence difference in gel electrophoresis; 6MWD: Six minute walking distance; ADL: Activities of daily living; ANKRD1: Ankyrin repeat domain 1 (cardiac muscle); ATF3: Activating transcription factor 3; BIA: Bioimpedance analysis; C: Control subjects; CDKN1A: Cyclin-dependent kinase inhibitor 1A (p21<sup>WAF1/Cip1</sup>); CEBPA: CCAAT/Enhancer binding protein (C/EBP), alpha; CKIs: Cyclin-dependent kinase inhibitors; COPD: Chronic obstructive pulmonary disease; COPD<sub>L</sub>: Patients with COPD and low FFMI; COPD<sub>N</sub>: Patients with COPD and normal FFMI; DCM: Idiopathic dilated cardiomyopathy; DEPs: Differentially expressed proteins; DNA: Deoxyribonucleic acid; ESCs: Embryonic stem cells; FC: Fold change; FEV<sub>1</sub>: Forced expiratory volume in the first second; FFMI: Fat free mass index; FVC: Forced vital capacity; GADD45A: Growth arrest and DNA-damage-inducible, alpha; H3K79: Lysine 79 of histone H3; HRQoL: Health related quality of life; HSkMSCs: Human skeletal muscle satellite cells; LCADL: London Chest



Activity of Daily Living Scale; mMRC: Modified medical research council dyspnoea score; mRNA: m Ribonucleic acid; PA: Physical activity; PaCO<sub>2</sub>: Arterial carbon dioxide partial pressure; PA<sub>L</sub>: Physical activity assessed with the LCADL; PaO<sub>2</sub>: Arterial oxygen partial pressure; PA<sub>V</sub>: Physical activity assessed with the Voorrips questionnaire; QMVC: Quadriceps maximal voluntary contraction; qPCR: Real time polymerase chain reaction; ROS: Reactive oxidative species; RP: Rank products; SGRQ: Saint George's respiratory questionnaire; si RNA: Small interferon ribonucleic acid; ΔCT: Delta cycle threshold

#### Acknowledgments

The authors would like to thank the Chief Scientist Office (CSO 06/S1103/5), the ERS Long Term Research fellowship (LTRF 068-2012) and the Fondo de Investigación Sanitaria (FIS 08/0320) for the financial support.

#### Funding

This study was financially supported by the Chief Scientist Office (CSO 06/S1103/5) and the Fondo de Investigación Sanitaria (FIS) (PI08/0320). Dr. Ramzi Lakhdar was supported by an ERS Long Term Research fellowship (LTRF 068-2012).

#### Availability of data and materials

The authors declare that [the/all other] data supporting the findings of this study are available within the article [and its Additional file 1]. Please contact author for data requests.

#### Authors' contributions

Conception and design: RAR, RB, RL, EMD, WM. Realisation, analysis and interpretation: RL, RB, RAR, EMD, WM. Drafting the manuscript for important intellectual contents: RL, RAR, RB, EMD, WM. All authors read and approved the final manuscript.

#### Competing interests

The authors declare that they have no competing interests.

#### Consent for publication

Not Applicable.

#### Ethics approval and consent to participate

All participants were informed of any risks and discomfort associated with the study, and written informed consent was obtained. The study was approved by the Lothian Regional Ethics Committee.

#### Author details

<sup>1</sup>ELEGI Colt Laboratory, Centre for Inflammation Research, The Queen's Medical Research Institute, University of Edinburgh, 47 Little France Crescent, Edinburgh EH16 4TJ, Scotland, UK. <sup>2</sup>Institut d'Investigacions Biomèdiques August Pi i Sunyer (IDIBAPS), University of Barcelona, Barcelona, Spain.

Received: 22 December 2016 Accepted: 21 February 2017

Published online: 03 May 2017

#### References

- Celli B, MacNee W, Agusti A, Anzueto A, Berg B, Buist A, Calverley P, Chavannes N, Dillard T, Fahy B. Standards for the diagnosis and treatment of patients with COPD: a summary of the ATS/ERS position paper. *Eur Respir J*. 2004;23:932–46.
- Celli BR, Decramer M, Wedzicha JA, Wilson KC, Agusti A, Criner GJ, MacNee W, Make BJ, Rennard SI, Stockley RA, et al. An Official American Thoracic Society/ European Respiratory Society Statement: Research questions in chronic obstructive pulmonary disease. *Am J Respir Crit Care Med*. 2015;191:e4–27.
- Agusti AG, Noguera A, Sauleda J, Sala E, Pons J, Busquets X. Systemic effects of chronic obstructive pulmonary disease. *Eur Respir J*. 2003;21:347–60.
- Maltais F, Decramer M, Casaburi R, Barreiro E, Burelle Y, Debigare R, Dekhuijzen PN, Franssen F, Gayan-Ramirez G, Gea J, et al. An official american thoracic society/european respiratory society statement: update on limb muscle dysfunction in chronic obstructive pulmonary disease. *Am J Respir Crit Care Med*. 2014;189:e15–62.
- Decramer M, Gosselink R, Troosters T, Schepers R. Peripheral muscle weakness is associated with reduced survival in COPD. *Am J Respir Crit Care Med*. 1998; 157:A19.
- Engelen MPKJ, Schols AMWJ, Does JD, Wouters EFM. Skeletal muscle weakness is associated with wasting of extremity fat-free mass but not with airflow obstruction in patients with chronic obstructive pulmonary disease. *Am J Clin Nutr*. 2000;71:733–8.
- Bernard S, Leblanc P, Whittom F, Carrier G, Jobin J, Belleau R, Maltais F. Peripheral muscle weakness in patients with chronic obstructive pulmonary disease. *Am J Respir Crit Care Med*. 1998;158:629–34.
- Vilaro J, Rabinovich R, Gonzalez-deSuso JM, Troosters T, Rodriguez D, Barbera JA, Roca J. Clinical assessment of peripheral muscle function in patients with chronic obstructive pulmonary disease. *Am J Phys Med Rehabil*. 2009;88:39–46.
- Schols AMWJ, Soeters PB, Dingemans AMC, Mostert R, Frantzen PJ, Wouters EFM. Prevalence and characteristics of nutritional depletion in patients with stable COPD eligible for pulmonary rehabilitation. *Am Rev Respir Dis*. 1993; 147:1151–6.
- Baarends EM, Schols AM, Mostert R, Wouters EF. Peak exercise response in relation to tissue depletion in patients with chronic obstructive pulmonary disease. *Eur Respir J*. 1997;10:2807–13.
- Kobayashi A, Yoneda T, Yoshikawa M, Ikuno M, Takenaka H, Fukuoka A, Narita N, Nezu K. The relation of fat-free mass to maximum exercise performance in patients with chronic obstructive pulmonary disease. *Lung*. 2000;178:119–27.
- Schols AM, Mostert R, Soeters PB, Wouters EF. Body composition and exercise performance in patients with chronic obstructive pulmonary disease. *Thorax*. 1991;46:695–9.
- Mostert R, Goris A, Weling-Scheepers C, Wouters EF, Schols AM. Tissue depletion and health related quality of life in patients with chronic obstructive pulmonary disease. *Respir Med*. 2000;94:859–67.
- Marquis K, Debigare R, Lacasse Y, Leblanc P, Jobin J, Carrier G, Maltais F. Midthigh muscle cross-sectional area is a better predictor of mortality than body mass index in patients with chronic obstructive pulmonary disease. *Am J Respir Crit Care Med*. 2002;166:809–13.
- Mador MJ. Muscle mass, not body weight, predicts outcome in patients with chronic obstructive pulmonary disease. *Am J Respir Crit Care Med*. 2002;166:787–9.
- Watz H, Waschki B, Meyer T, Magnussen H. Physical activity in patients with COPD. *Eur Respir J*. 2009;33:262–72.
- Wouters EF, Creutzberg EC, Schols AM. Systemic effects in COPD. *CHEST J*. 2002;121:1275–30.
- Rabinovich RA, Drost E, Manning JR, Dunbar DR, Diaz-Ramos M, Lakhdar R, Bastos R, MacNee W. Genome-wide mRNA expression profiling in vastus lateralis of COPD patients with low and normal fat free mass index and healthy controls. *Respir Res*. 2015;16:1.
- Ito K, Mercado N. STOP accelerating lung aging for the treatment of COPD. *Exp Gerontol*. 2014;59:21–7.
- Kuro-o M, Matsumura Y, Aizawa H, Kawaguchi H, Suga T, Utsugi T, Ohyama Y, Kurabayashi M, Kaname T, Kume E, et al. Mutation of the mouse *klotho* gene leads to a syndrome resembling ageing. *Nature*. 1997;390:45–51.
- Rosenberg IH. Sarcopenia: origins and clinical relevance. *Clin Geriatr Med*. 2011;27:337–9.
- Therault ME, Pare ME, Maltais F, Debigare R. Satellite cells senescence in limb muscle of severe patients with COPD. *PLoS One*. 2012;7:e39124.
- Ohlndieck K. Mass spectrometry-based proteomic analysis of middle-aged vs. aged vastus lateralis reveals increased levels of carbonic anhydrase isoform 3 in senescent human skeletal muscle. *Int J Mol Med*. 2012;30:727–33.
- Egan B, Dowling P, O'Connor PL, Henry M, Meleady P, Zierath JR, O'Gorman DJ. 2-D DIGE analysis of the mitochondrial proteome from human skeletal muscle reveals time course-dependent remodelling in response to 14 consecutive days of endurance exercise training. *Proteomics*. 2011;11:1413–28.
- Tannu NS, Hemby SE. Two-dimensional fluorescence difference gel electrophoresis for comparative proteomics profiling. *Nat Protoc*. 2006;1:1732–42.
- Arentz G, Weiland F, Oehler MK, Hoffmann P. State of the art of 2D DIGE. *Proteomics Clin Appl*. 2015;9:277–88.
- Rabe KF, Hurd S, Anzueto A, Barnes PJ, Buist SA, Calverley P, Fukuchi Y, Jenkins C, Rodriguez-Roisin R, van Weel C, Zielinski J. Global strategy for the diagnosis, management, and prevention of chronic obstructive pulmonary disease: GOLD executive summary. *Am J Respir Crit Care Med*. 2007;176: 532–55.
- Miller MR, Hankinson J, Brusasco V, Burgos F, Casaburi R, Coates A, Crapo R, Enright P, van der Grinten CP, Gustafsson P, et al. Standardisation of spirometry. *Eur Respir J*. 2005;26:319–38.

29. Schols AM, Broekhuizen R, Weling-Scheepers CA, Wouters EF. Body composition and mortality in chronic obstructive pulmonary disease. *Am J Clin Nutr.* 2005;82:53–9.
30. Holland AE, Spruit MA, Troosters T, Puhan MA, Pepin V, Saey D, McCormack MC, Carlin BW, Sciruba FC, Pitta F, et al. An official European Respiratory Society/American Thoracic Society technical standard: field walking tests in chronic respiratory disease. *Eur Respir J.* 2014;44:1428–46.
31. Spruit MA, Gosselink R, Troosters T, Kasran A, Gayan-Ramirez G, Bogaerts P, Bouillon R, Decramer M. Muscle force during an acute exacerbation in hospitalised patients with COPD and its relationship with CXCL8 and IGF-I. *Thorax.* 2003;58:752–6.
32. Jones PW, Quirk FH, Baveystock CM, Littlejohns P. A self-complete measure of health status for chronic airflow limitation. *Am Rev Respir Dis.* 1992;145:1321–7.
33. Voorrips LE, Ravelli AC, Dongelmans PC, Deurenberg P, Van Staveren WA. A physical activity questionnaire for the elderly. *Med Sci Sports Exerc.* 1991;23:974–9.
34. Garrod R, Bestall JC, Paul EA, Wedzicha JA, Jones PW. Development and validation of a standardized measure of activity of daily living in patients with severe COPD: the London Chest Activity of Daily Living scale (LCADL). *Respir Med.* 2000;94:589–96.
35. Toth ZE, Mezey E. Simultaneous visualization of multiple antigens with tyramide signal amplification using antibodies from the same species. *J Histochem Cytochem.* 2007;55:545–54.
36. Danoviz ME, Yablonka-Reuveni Z. Skeletal muscle satellite cells: background and methods for isolation and analysis in a primary culture system. *Methods Mol Biol.* 2012;798:21–52.
37. Al-Khalili L, Cartee GD, Krook A. RNA interference-mediated reduction in GLUT1 inhibits serum-induced glucose transport in primary human skeletal muscle cells. *Biochem Biophys Res Commun.* 2003;307:127–32.
38. Bouzakri K, Zachrisson A, Al-Khalili L, Zhang BB, Koistinen HA, Krook A, Zierath JR. siRNA-based gene silencing reveals specialized roles of IRS-1/Akt2 and IRS-2/Akt1 in glucose and lipid metabolism in human skeletal muscle. *Cell Metab.* 2006;4:89–96.
39. Jones B, Su H, Bhat A, Lei H, Bajko J, Hevi S, Baltus GA, Kadam S, Zhai H, Valdez R, et al. The histone H3K79 methyltransferase Dot1L is essential for mammalian development and heterochromatin structure. *PLoS Genet.* 2008;4:e1000190.
40. Farooq Z, Banday S, Pandita TK, Altam M. The many faces of histone H3K79 methylation. *Mutat Res Rev Mutat Res.* 2016;768:46–52.
41. Kim W, Choi M, Kim JE. The histone methyltransferase Dot1/DOT1L as a critical regulator of the cell cycle. *Cell Cycle.* 2014;13:726–38.
42. Tatum D, Li S. Evidence that the histone methyltransferase Dot1 mediates global genomic repair by methylating histone H3 on lysine 79. *J Biol Chem.* 2011;286:17530–5.
43. Kim W, Kim R, Park G, Park JW, Kim JE. Deficiency of H3K79 histone methyltransferase Dot1-like protein (DOT1L) inhibits cell proliferation. *J Biol Chem.* 2012;287:5588–99.
44. Barry ER, Krueger W, Jakuba CM, Veilleux E, Ambrosi DJ, Nelson CE, Rasmussen TP. ES cell cycle progression and differentiation require the action of the histone methyltransferase Dot1L. *Stem Cells.* 2009;27:1538–47.
45. Cazzalini O, Scovassi AI, Savio M, Stivala LA, Prosperi E. Multiple roles of the cell cycle inhibitor p21(CDKN1A) in the DNA damage response. *Mutat Res.* 2010;704:12–20.
46. Macip S, Igarashi M, Fang L, Chen A, Pan ZQ, Lee SW, Aaronson SA. Inhibition of p21-mediated ROS accumulation can rescue p21-induced senescence. *EMBO J.* 2002;21:2180–8.
47. Chen X, Zhang W, Gao YF, Su XQ, Zhai ZH. Senescence-like changes induced by expression of p21(waf1/Cip1) in NIH3T3 cell line. *Cell Res.* 2002;12:229–33.
48. Nguyen AT, Taranova O, He J, Zhang Y. DOT1L, the H3K79 methyltransferase, is required for MLL-AF9-mediated leukemogenesis. *Blood.* 2011;117:6912–22.
49. Mymrikov EV, Seit-Nebi AS, Gusev NB. Large potentials of small heat shock proteins. *Physiol Rev.* 2011;91:1123–59.
50. Beyer I, Njemini R, Bautmans I, Demanet C, Bergmann P, Mets T. Inflammation-related muscle weakness and fatigue in geriatric patients. *Exp Gerontol.* 2012;47:52–9.
51. Mullen E, O'Reilly E, Ohlendieck K. Skeletal muscle tissue from the Goto-Kakizaki rat model of type-2 diabetes exhibits increased levels of the small heat shock protein Hsp27. *Mol Med Rep.* 2011;4:229–36.
52. Sakurai T, Fujita Y, Ohto E, Oguro A, Atomi Y. The decrease of the cytoskeleton tubulin follows the decrease of the associating molecular chaperone alphaB-crystallin in unloaded soleus muscle atrophy without stretch. *FASEB J.* 2005;19:1199–201.
53. Koechlin C, Maltais F, Saey D, Michaud A, LeBlanc P, Hayot M, Prefaut C. Hypoxaemia enhances peripheral muscle oxidative stress in chronic obstructive pulmonary disease. *Thorax.* 2005;60:834–41.
54. Montes de Oca M, Torres SH, De Sanctis J, Mata A, Hernandez N, Talamo C. Skeletal muscle inflammation and nitric oxide in patients with COPD. *Eur Respir J.* 2005;26:390–7.
55. Allaire J, Maltais F, LeBlanc P, Simard PM, Whittom F, Doyon JF, Simard C, Jobin J. Lipofuscin accumulation in the vastus lateralis muscle in patients with chronic obstructive pulmonary disease. *Muscle Nerve.* 2002;25:383–9.
56. Barreiro E, Gea J, Corominas JM, Hussain SN. Nitric oxide synthases and protein oxidation in the quadriceps femoris of patients with chronic obstructive pulmonary disease. *Am J Respir Cell Mol Biol.* 2003;29:771–8.
57. Agusti A, Morla M, Sauleda J, Saus C, Busquets X. NF-kappaB activation and iNOS upregulation in skeletal muscle of patients with COPD and low body weight. *Thorax.* 2004;59:483–7.
58. Mathur S, Brooks D, Carvalho CR. Structural alterations of skeletal muscle in copd. *Front Physiol.* 2014;5:104.

Submit your next manuscript to BioMed Central and we will help you at every step:

- We accept pre-submission inquiries
- Our selector tool helps you to find the most relevant journal
- We provide round the clock customer support
- Convenient online submission
- Thorough peer review
- Inclusion in PubMed and all major indexing services
- Maximum visibility for your research

Submit your manuscript at  
www.biomedcentral.com/submit

