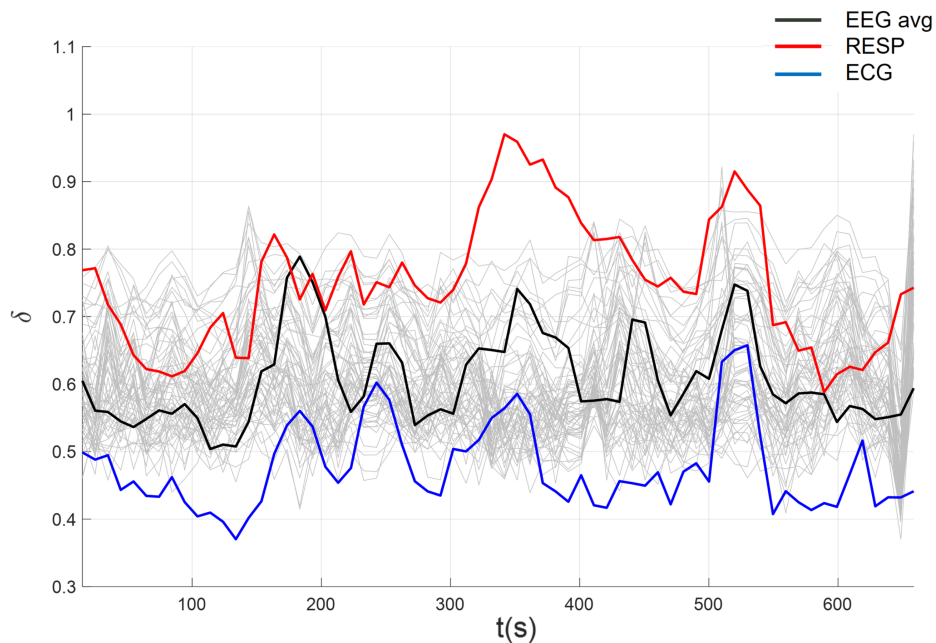


# Supplementary Material

## 1 SUPPLEMENTARY DATA



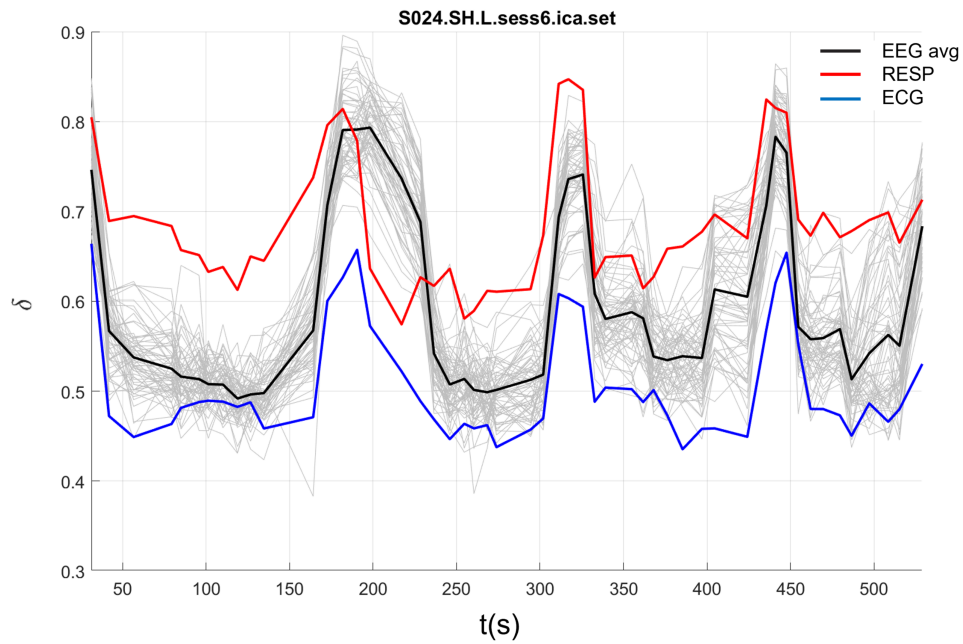
**Figure S1.** CS among EEG, ECG, and the envelope of the Hilbert transform of RESP using automated parameters selection (Compare with Figure 10 in body of manuscript).

	EEG	ECG	RESP
EEG	-		
ECG	.70*	-	-
RESP	.61*	.55*	-

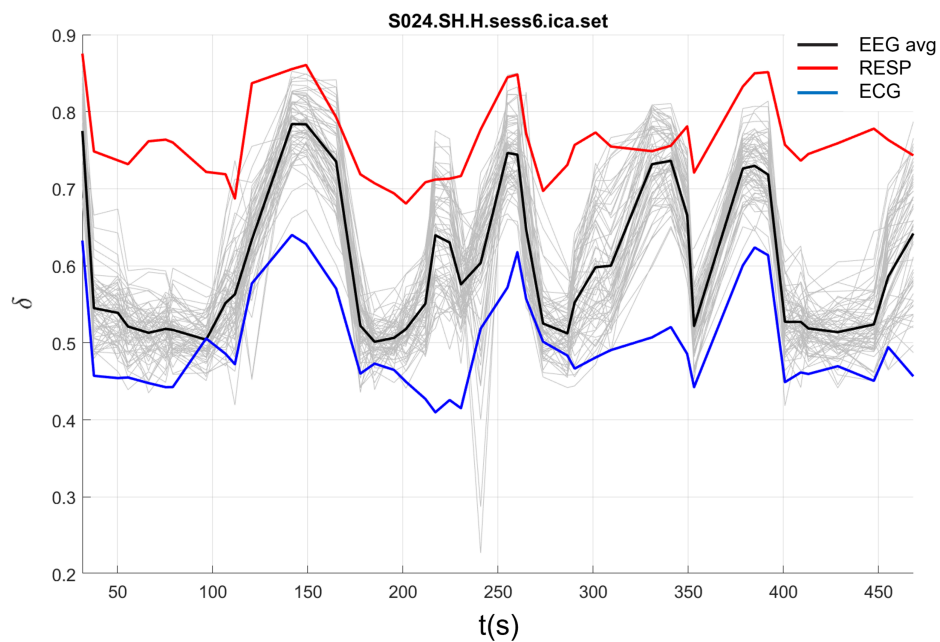
**Table S1.** Correlations among scaling indices of the mean of 64 EEG channels, ECG, and the envelope of the Hilbert transform of RESP (\* $p < .01$ ) (Compare with Table 4 in body of manuscript)

	EEG	ECG	RESP
EEG	-		
ECG	.87*	-	-
RESP	.69*	.77*	-

**Table S2.** Correlations among scaling indices of the mean of 64 EEG channels, ECG, and filtered RESP for S024 Low time stress condition (\* $p < .05$ )



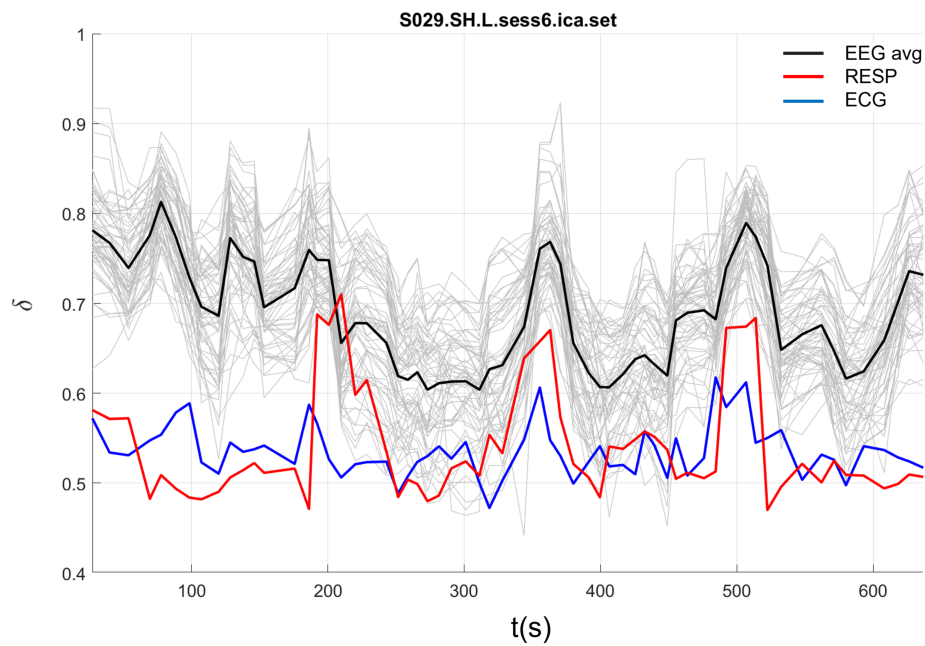
**Figure S2.** Significant complexity synchronization for subject S024 among EEG, ECG, and filtered RESP in Low time stress condition.



**Figure S3.** Significant complexity synchronization for subject S024 among EEG, ECG, and filtered RESP in High time stress condition.

	EEG	ECG	RESP
EEG	-		
ECG	.80*	-	
RESP	.77*	.86*	-

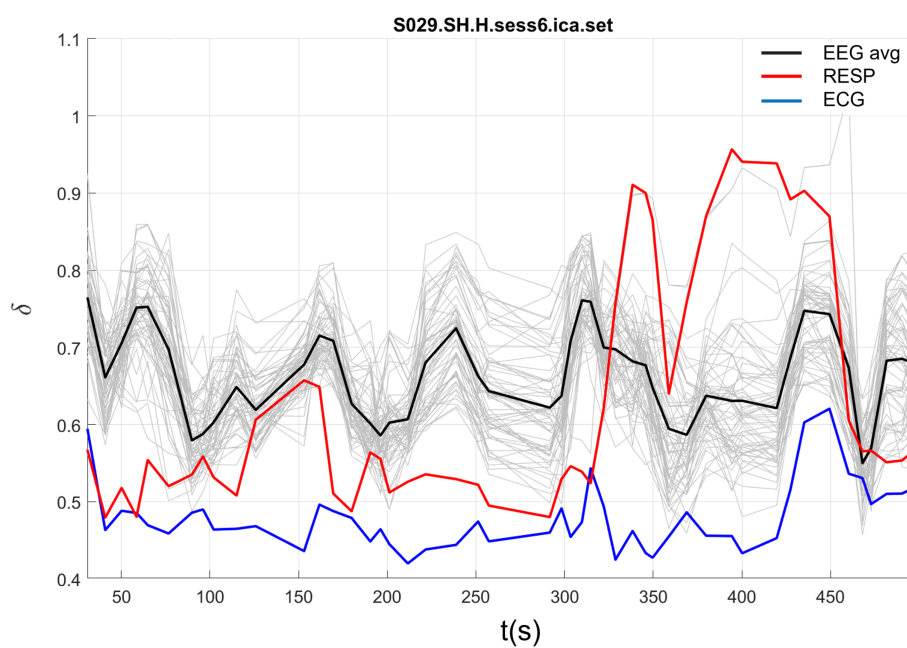
**Table S3.** Correlations among scaling indices of the mean of 64 EEG channels, ECG, and filtered RESP for S024 High time stress condition (\* $p < .05$ )



**Figure S4.** Non-significant complexity synchronization for subject S029 among EEG, ECG, and filtered RESP in Low time stress condition.

	EEG	ECG	RESP
EEG	-		
ECG	.54*	-	
RESP	.32*	.21	-

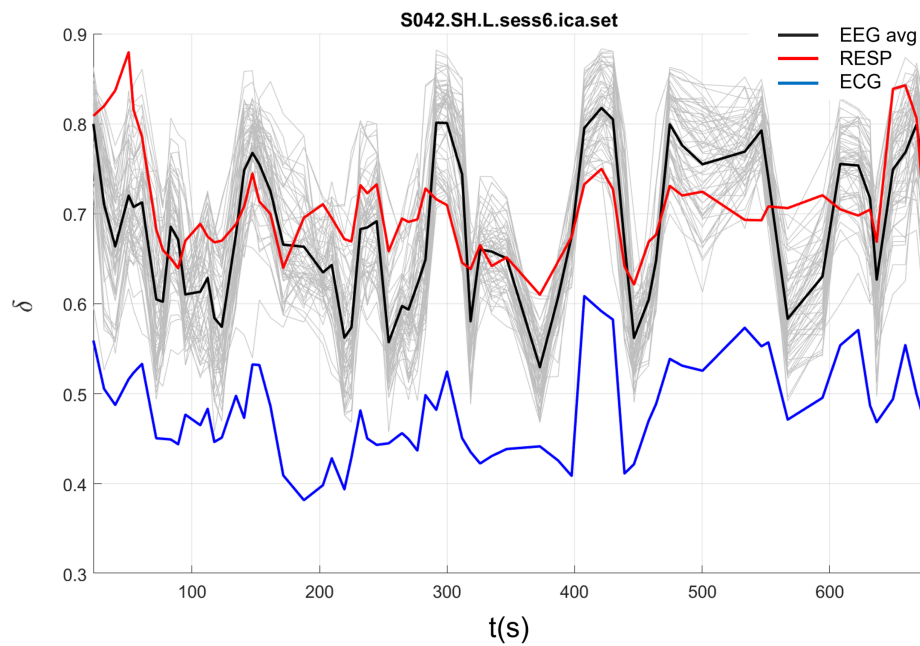
**Table S4.** Correlations among scaling indices of the mean of 64 EEG channels, ECG, and filtered RESP for S029 Low time stress condition (\* $p < .05$ )



**Figure S5.** Non-significant complexity synchronization for subject S029 among EEG, ECG, and filtered RESP in High time stress condition.

	EEG	ECG	RESP
EEG	-		
ECG	.37*	-	
RESP	.02	.04	-

**Table S5.** Correlations among scaling indices of the mean of 64 EEG channels, ECG, and filtered RESP for S029 High time stress condition (\* $p < .05$ )



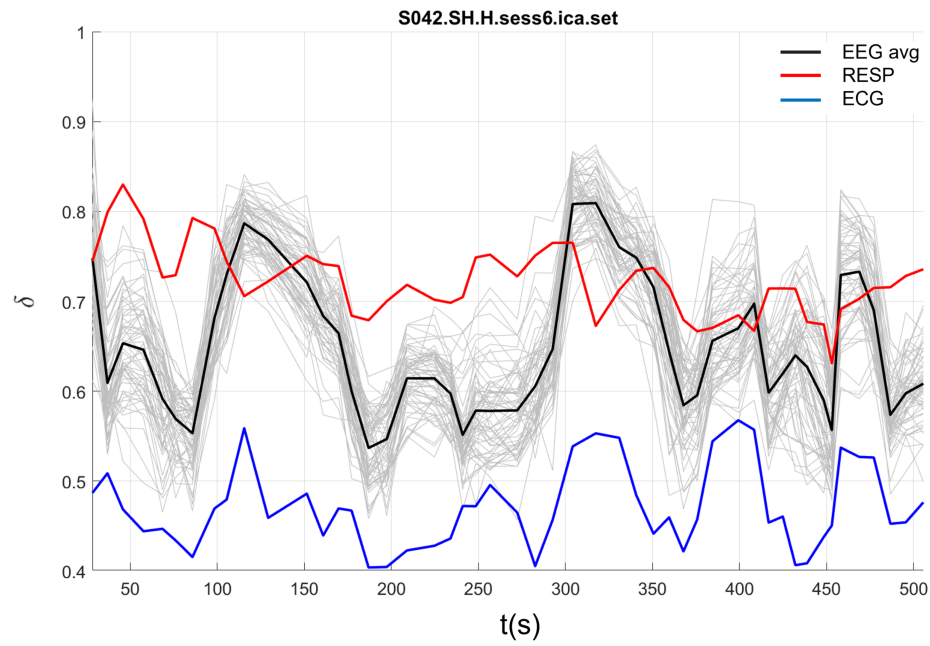
**Figure S6.** Significant complexity synchronization for subject S042 among EEG, ECG, and filtered RESP in Low time stress condition.

	EEG	ECG	RESP
EEG	-		
ECG	.74*	-	
RESP	.53*	.54*	-

**Table S6.** Correlations among scaling indices of the mean of 64 EEG channels, ECG, and filtered RESP for S042 Low time stress condition (\* $p < .05$ )

	EEG	ECG	RESP
EEG	-		
ECG	.65*	-	
RESP	.10	-.09	-

**Table S7.** Correlations among scaling indices of the mean of 64 EEG channels, ECG, and filtered RESP for S042 High time stress condition (\* $p < .05$ )



**Figure S7.** Non-significant complexity synchronization for subject S042 among EEG, ECG, and filtered RESP in High time stress condition.