

# Long noncoding RNA *CCAT2* promotes breast tumor growth by regulating the Wnt signaling pathway

Yi Cai<sup>1,\*</sup>Jing He<sup>2,\*</sup>Dong Zhang<sup>1</sup><sup>1</sup>Department of Geriatric Oncology,<sup>2</sup>Department of Geriatric Integrated Surgery, The General Hospital of Chinese People's Liberation Army, Beijing City, People's Republic of China

\*These authors contributed equally to this work

 Video abstract


Point your SmartPhone at the code above. If you have a QR code reader the video abstract will appear. Or use:

[http://youtu.be/x57BPKL\\_J4g](http://youtu.be/x57BPKL_J4g)

Correspondence: Dong Zhang  
Department of Geriatric Oncology, The General Hospital of Chinese People's Liberation Army, 28 Fuxing Road, Haidian District, Beijing City, 100853, People's Republic of China  
Tel +86 10 6687 6324  
Email zhangdzhangd301@163.com

**Abstract:** In addition to protein-coding genes, the human genome makes a large amount of noncoding RNAs, including microRNAs and long noncoding RNAs (lncRNAs). Emerging evidence indicates that lncRNAs could have a critical role in the regulation of cellular processes such as cell growth and apoptosis as well as cancer progression and metastasis. The lncRNA *CCAT2* is dysregulated in several cancers such as colon cancer, non-small cell lung cancer, esophageal squamous cell carcinoma, gastric cancer, and breast cancer; however, the contributions of *CCAT2* to breast cancer remain largely unknown. In the current paper, we first confirmed the high expression level of *CCAT2* in breast cancer tissues and breast cancer cell lines by reverse transcription quantitative polymerase chain reaction (RT-qPCR) assay, and we further analyzed the relationship between *CCAT2* expression and clinical prognostic factors. Also, the biological function of *CCAT2* was explored and the results showed silencing of *CCAT2* could suppress cell growth in vitro and tumor formation in vivo. Finally, our results revealed that the abnormal expression of *CCAT2* could influence the Wnt signaling pathway. In conclusion, lncRNA *CCAT2* might be considered as a novel molecule involved in breast cancer development, which provides a potential therapeutic target for breast cancer.

**Keywords:** long noncoding RNAs, *CCAT2*, breast cancer, Wnt signaling pathway

## Introduction

Globally, breast cancer is the most commonly diagnosed cancer in women, while metastatic disease is the leading cause of cancer-related deaths in this group.<sup>1</sup> Therapeutic failure and distant metastasis have been a major challenge in the treatment of breast cancer. Thus, exploring more markers to predict responsiveness of treatment, tumor progression, and potential target therapies is becoming more and more important.<sup>2,3</sup>

As we all know, cancer progression involves various changes in gene expression. As a newly discovered class of noncoding genes, emerging evidence suggests that long noncoding RNAs (lncRNAs) may serve as master gene regulators capable of controlling protein-coding and noncoding genes.<sup>4</sup> The altered expression of lncRNAs is frequently observed in human cancers, including breast cancer. Alterations in the expression, the primary structure, and secondary structure of lncRNAs as well as changes in their binding proteins are often associated with metastasis, invasion, and patient survival.<sup>5</sup> These findings suggested that the potential role of lncRNAs should be further investigated.

Ling et al first discovered *CCAT2*, a novel noncoding RNA mapping to 8q24, in 2013. They found that *CCAT2* is highly overexpressed in microsatellite-stable colorectal cancer and promotes tumor growth, metastasis, and chromosomal instability.<sup>6</sup>



Redis et al showed that *CCAT2* may represent a valuable predictive marker of clinical outcomes (shorter metastases-free survival and overall survival) for a specific subgroup of breast cancer patients.<sup>7</sup> Qiu et al reported that *CCAT2* is a lung adenocarcinoma-specific lncRNA and promotes invasion of non-small cell lung cancer, and *CCAT2* could be used as a potential biomarker for lymph node metastasis.<sup>8</sup> Wang et al reported that *CCAT2* correlates with smoking in esophageal squamous cell carcinoma, and that *CCAT2* showed higher diagnostic performance than conventional serum biomarkers.<sup>9</sup> In addition, Wang et al reported that upregulation of *CCAT2* was correlated with gastric cancer progression, and that *CCAT2* might be a potential molecular biomarker for predicting the prognosis of patients.<sup>10</sup> These authors suggest that *CCAT2* might exert its biological function as an oncogene in several kinds of cancers; however, the detailed function of *CCAT2* in breast cancer was still uncertain.

In the current paper, we investigated the expression of *CCAT2* in breast cancer tissues and cell lines. We then examined the relationships between *CCAT2* expression levels in tumor tissues and the clinical prognostic features of breast cancer patients. Furthermore, we conducted in vitro assays to demonstrate the biological functions of *CCAT2* in the proliferation of breast cancer cells. Finally, the in vivo assay of the tumor xenograft model was carried out to verify the ability of tumor formation.

## Materials and methods

### Patients' samples

The Ethical Committee of The General Hospital of Chinese People's Liberation Army for Clinical Research approved this study. Paired breast cancer tissue and adjacent normal breast tissue were obtained from 67 patients who had undergone surgical breast cancer resection between March 2009 and February 2010 at the Department of Geriatric Oncology and the Department of Geriatric Comprehensive Surgery, in the General Hospital of Chinese People's Liberation Army. All the participants are female. Average age of breast cancer patients was 51.5±12.5 years (range: 29–71), and the body mass index, considered as a risk factor for breast cancer, was 22.4±2.5 kg/m<sup>2</sup> (range: 19–34). No smoking subjects were included in our study. All the patients were diagnosed by two experienced pathologists according to American Society of Clinical Oncology breast cancer guidelines. The non-tumorous tissue samples were at least 2 cm from the edge of the tumor, contained no obvious tumor cells, and were also evaluated by the pathologists. The tissue samples were obtained from fresh surgical specimens, then frozen in liquid

nitrogen immediately, and stored at –80°C. All the samples were obtained with the patients' informed consent.

### Cell lines and culture conditions

The human breast cancer cell lines MDA-MB-231 and MCF-7 were purchased from Beijing Zhongyuan Ltd. (Beijing, People's Republic of China). Normal mammary fibroblast cell line Hs578Bst was purchased from Shanghai Kexing Biotech Ltd. (Shanghai, People's Republic of China). MDA-MB-231 cells were cultured in L-15 medium, and MCF-7 cells and Hs578Bst cells were cultured in Dulbecco's Modified Eagle's Medium. All media included 10% fetal bovine serum, 100 U/mL of penicillin, and 100 µg/mL of streptomycin. Both cell lines were cultured at 37°C and 5% CO<sub>2</sub>.

### Cell transfection

The siRNA specifically targeting *CCAT2* (si-*CCAT2*) was commercially constructed by Shanghai GenePharma Co. Ltd (Shanghai, People's Republic of China), the sequences were S: 5'-GUGCAACUCUGCAAUUUAAUU-3', S: 5'-UUAAAUUGCAGAGUUGCACUU-3', and the scrambled nucleotide was used as the negative control (si-NS). Cells were transfected with siRNAs using Lipofectamine RNAiMAX reagent (Thermo Fisher Scientific, Waltham, MA, USA) according to the manufacturer's protocol.

### RNA extraction and quantitative reverse transcription polymerase chain reaction

RNA was isolated from tissues or cells using TRIzol reagent (Thermo Fisher Scientific), and then the RNA was reverse transcribed using SuperScript First Strand cDNA System (Thermo Fisher Scientific) according to the manufacturer's instructions. RT-qPCR was performed to detect lncRNA expression, and delta Ct values were used to determine their absolute expression, delta-delta Ct values were used to determine their relative expression as fold changes occur. The PCR amplification was performed for 40 cycles at 94°C for 30 seconds, 60°C for 30 seconds, and 72°C for 30 seconds, on a Thermo Fisher Scientific 7300 Real-Time PCR System with 1.0 µL of cDNA and SYBR Green Real-time PCR Master Mix (TransGen Biotech, Beijing, People's Republic of China). The primers used are listed below: *CCAT2*: S: 5'-AGACAGTGCCAGCCAACC-3', AS: 5'-TGCCAAACCCTTCCCTTA-3'; glyceraldehyde-3-phosphate dehydrogenase (GAPDH) was used as an internal control, S: 5'-AATGGACAAGTGGTCGTGGAC-3', and AS: 5'-CCCTCCAGGGGATCTGTTTG-3'.

## Western blot analysis

The protein samples were extracted from cultured cells and both the cytoplasmic and nuclear protein were separated and extracted using Nucleoprotein Extraction Kit (purchased from Sangon Biotech, Shanghai, People's Republic of China) according to the manufacturer's instructions. The protein content of each tube was calculated via bicinchoninic acid protein quantification method. The protein samples (40  $\mu$ g) were fractionated by sodium dodecyl sulfate polyacrylamide gel electrophoresis (10% polyacrylamide gel). Mouse monoclonal primary antibodies against  $\beta$ -catenin and Actin (C-2) (Santa Cruz Biotechnology Inc., Dallas, TX, USA) and mouse monoclonal primary antibodies against histone 3 (Zhongshanjinqiao Biotech, Beijing, People's Republic of China) were used for the Western blot.

## Luciferase assay

The TOP/FOP Flash luciferase reporter plasmid system was purchased from Biovector NTCC Ltd (Beijing, People's Republic of China). Luciferase assays were performed using a luciferase assay kit from Vigorous Biotech (Beijing, People's Republic of China) according to the manufacturer's protocol. First, the MCF-7 and MDA-MB-231 cells were transfected with the appropriate plasmids in 24-well plates. Then, the cells were harvested and lysed for a luciferase assay 24 hours after transfection. Firefly luciferase was used as a base line, and Renilla luciferase was used as the internal control.

## MTT assay

The MCF-7 and MDA-MB-231 cells transfected with either siCCAT or siNC for 48 hours were suspended and seeded into 96-well plates with a cell density of  $5 \times 10^3$ /well, and the final volume was 150  $\mu$ L/well. MTT solution (20  $\mu$ L) was added to the plates 12, 24, 48, and 72 hours later. The cells were cultured for another 4 hours at 37°C. Then, the medium was discarded and 150  $\mu$ L of dimethyl sulfoxide was added and the cells were oscillated for 15 minutes. The absorbance was measured at 490 nm using an enzyme-labeled analyzer.

## Tumor xenograft model

Female nude mice (4–5 weeks old) were purchased from Vital River Laboratory Animal Technology Ltd. (Beijing, People's Republic of China). MCF-7 cells were transfected with siCCAT (100 nM) or siNC (100 nM) respectively. MCF-7 ( $2 \times 10^6$  cells) in 50% matrigel (BD Biosciences, San Jose, CA, USA) were subcutaneously injected into the right flank

of nude mice to develop the xenograft mouse models bearing tumors. The tumor-cell injection was performed as described previously.<sup>11</sup> For the tumor growth assay, tumor volume was calculated as follows: tumor volume = width<sup>2</sup>  $\times$  length/2. The mice were sacrificed at day 24 and the tumors were separated for weighing. All experimental protocols were performed in accordance with ARRIVE (Animal Research: Reporting In Vivo Experiments) guidelines of the UK and were approved by the Institutional Animal Care and Use Committee of the General Hospital of Chinese People's Liberation Army.

## Statistical analysis

All statistical analyses were carried out using SPSS 17.0 (SPSS Inc., Chicago, IL, USA). Most of the data were analyzed using independent two-tailed Student's *t*-test, and overall survival was estimated by using the Kaplan–Meier method. Values of  $P < 0.05$  were considered statistically significant.

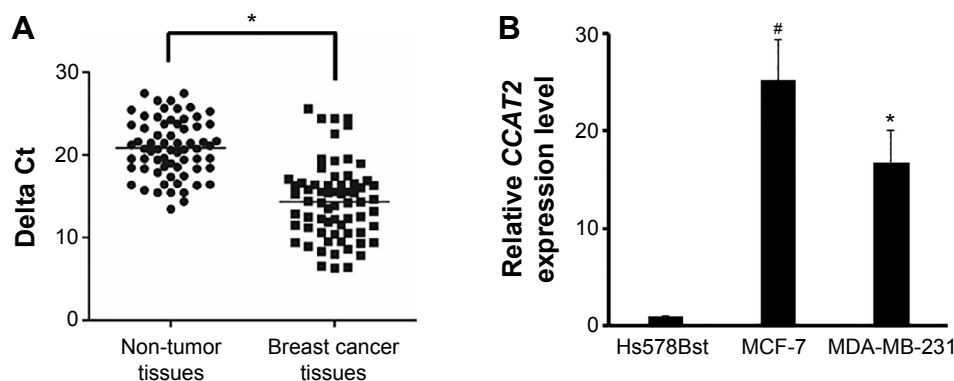
## Results

### CCAT2 is upregulated in breast tumors

First, we measured the *CCAT2* expression levels by RT-qPCR in a set of 67 matched samples. The result showed that *CCAT2* appeared to have higher expression in breast cancer tissues than in adjacent non-tumor tissues ( $P < 0.05$ ) (Figure 1A). The *CCAT2* expression was also examined by RT-qPCR in human breast cancer cell lines MDA-MB-231 and MCF-7. The normal mammary fibroblast cell line Hs578Bst was used as the control. This experiment showed that *CCAT2* expression was higher in breast cancer cell lines than in normal mammary fibroblasts ( $P < 0.001$ ) (Figure 1B).

### CCAT2 expression correlated with clinical prognostic factors

To assess the correlation between *CCAT2* expression and prognostic factors, we divided the breast cancer patients into two groups according to the *CCAT2* expression level in the tumor tissues: low *CCAT2* expression group (the change of relative expression  $<$  eightfold) and high *CCAT2* expression group (the change of relative expression  $>$  eightfold) (Figure 2A). As shown in Figure 2B, patients with high *CCAT2* expression had a significantly poorer prognosis than those with low expression, and the relative level of *CCAT2* expression was correlated with overall survival rate of patients with breast cancer (Figure 2B). Overall, these observations indicated that increased *CCAT2* expression is associated with the progression and development of breast cancer.



**Figure 1** *CCAT2* is upregulated in breast tumors.

**Notes:** (A) The *CCAT2* expression levels in breast cancer samples were significantly higher than those in adjacent non-tumor tissues by RT-qPCR assay. GAPDH was used as an internal control. (B) Higher expression levels of *CCAT2* were detected in MCF-7 and MDA-MB-231 cells than in normal Hs578Bst cells by RT-qPCR assay. GAPDH was used as an internal control. The experiments were all repeated at least three times. \* $P < 0.05$  vs the control, # $P < 0.01$ .

**Abbreviations:** RT-qPCR, reverse transcription quantitative polymerase chain reaction; GAPDH, glyceraldehyde-3-phosphate dehydrogenase.

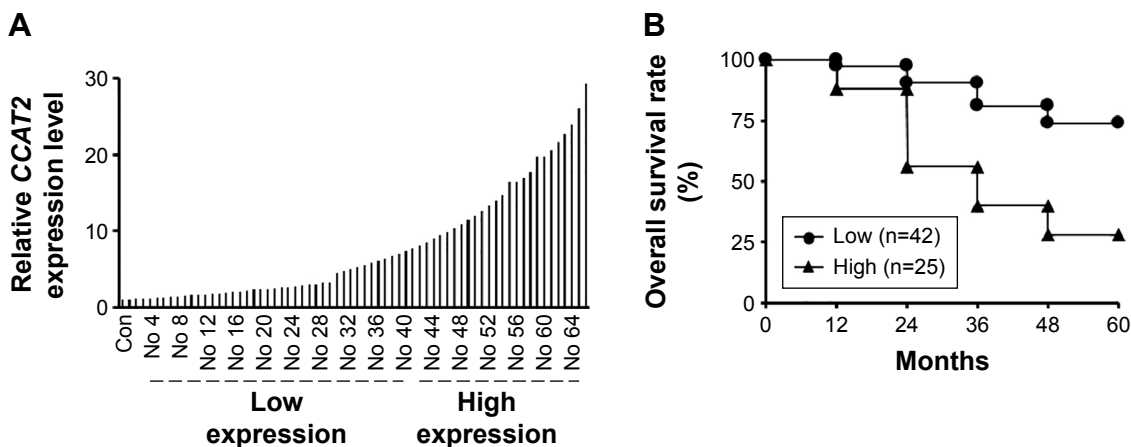
## Suppressing *CCAT2* expression decreases cell proliferation and invasion in vitro

To further investigate the role of *CCAT2* in human breast cancer cells, si-*CCAT2* was designed and transfected into MCF-7 and MDA-MB-231 breast cancer cells. Nonspecific siRNA (si-NS) was used as the negative control. As shown in Figure 3A, cells transfected with si-*CCAT2* presented a significantly decreased mRNA expression level of *CCAT2* compared with the si-NS group in both cells ( $P < 0.05$ ) (Figure 3A). The MTT assay showed that the proliferation rate was downregulated in the si-*CCAT2*-transfected breast cancer cells after 48 hours compared with the si-NS group ( $P < 0.05$ ) (Figure 3B). Furthermore, to analyze the role of *CCAT2* in cell invasion, transwell assays were performed in MCF-7 and MDA-MB-231 cells, and the result indicated that the invasiveness of both the MCF-7 and MDA-MB-231 cells

transfected with si-*CCAT2* were greatly decreased compared with the si-NS groups, respectively (Figure 3C). All together, the data demonstrated that suppression of *CCAT2* expression could inhibit cell proliferation and invasion of breast cancer cells in vitro.

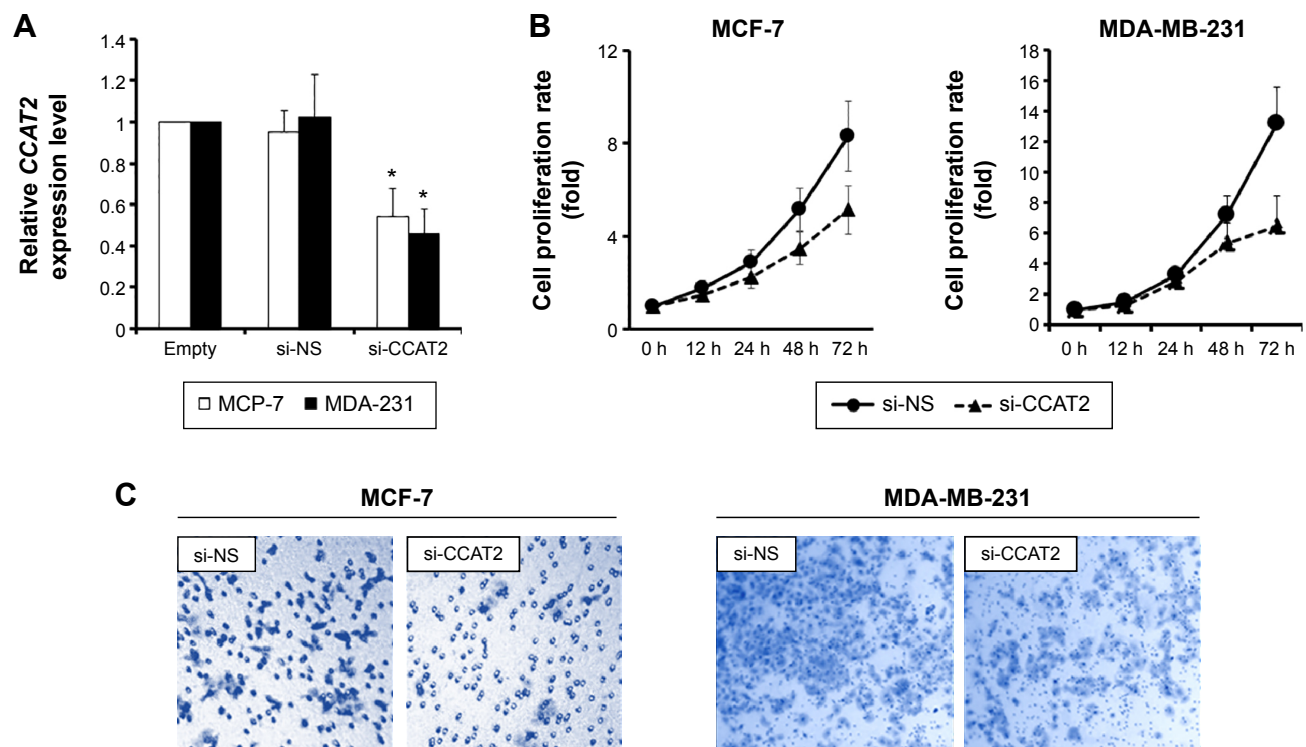
## Suppressing *CCAT2* expression inhibits tumorigenesis in vivo

To further determine the role of *CCAT2* on tumorigenesis, MCF-7 cells transfected with either si-NS or si-*CCAT2* mixed with matrigel were injected into nude mice. Two weeks after injection, a palpable tumor could be observed, and the results were consistent with the in vitro study; si-*CCAT2* significantly reduced tumor growth at the indicated time (Figure 4A). In addition, tumors derived from the si-*CCAT2* group grew at a slower rate than the si-NS group (Figure 4B), and



**Figure 2** *CCAT2* expression correlated with clinical prognostic factors.

**Notes:** (A) According to the *CCAT2* expression level in the tumor tissues, the involved breast cancer patients were divided into a low expression group and a high expression group, with an eightfold change (the average increase fold) as the demarcation point. (B) Breast cancer patients with high *CCAT2* expression showed a significantly poorer prognosis than those with low *CCAT2* expression according to the Kaplan–Meier overall survival curves. Con, tissue from normal person which was normalized to 1.



**Figure 3** Suppressing *CCAT2* expression decreases cell proliferation and invasion in vitro.

**Notes:** (A) The transfection efficiency of si-*CCAT2* in MCF-7 and MDA-MB-231 cells were indicated by RT-qPCR compared with cells transfected with si-NS. (B) An MTT assay was performed to investigate the effects of si-*CCAT2* on cell proliferation in MCF-7 and MDA-MB-231 cells. The data showed that si-*CCAT2* inhibited the cell growth of breast cancer cells. (C) A transwell assay was performed to investigate the effects of si-*CCAT2* on cell invasion in MCF-7 and MDA-MB-231 cells. The data showed si-*CCAT2* inhibited the invasion of breast cancer cells. The experiments were all repeated at least three times. \* $P < 0.05$  vs the control.

**Abbreviations:** RT-qPCR, reverse transcription quantitative polymerase chain reaction; h, hour(s); si-*CCAT2*, siRNA specifically targeting *CCAT2*; si-NS, nonspecific siRNA; si-NS, scrambled nucleotide used as the negative control.

the tumor weight in the si-*CCAT2* group was significantly less than the si-NS group (Figure 4C). The expression level of *CCAT2* was also detected, and the result showed that *CCAT2* was knocked down effectively (Figure 4D).

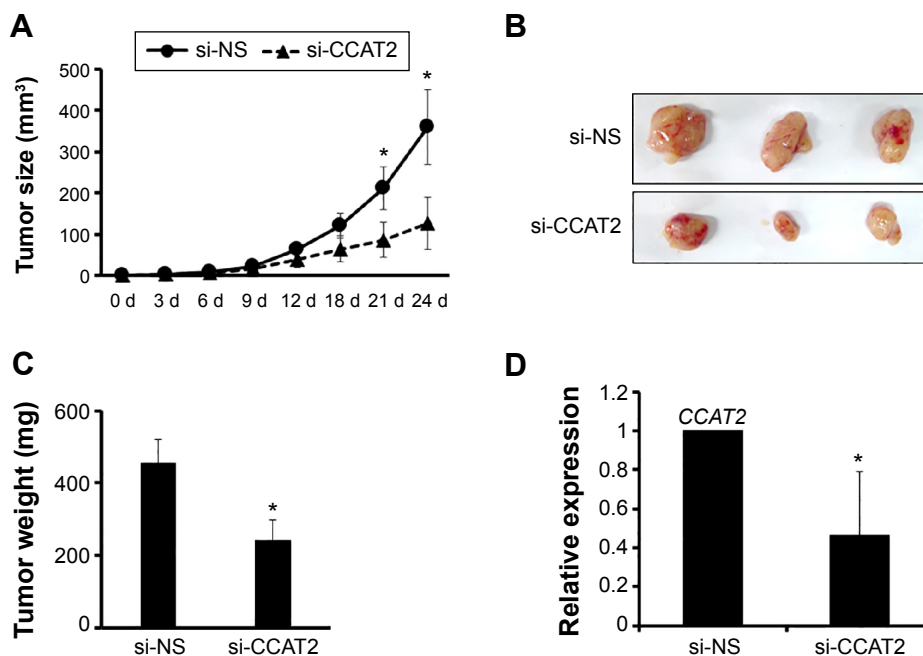
### Suppressing *CCAT2* expression affects the Wnt/ $\beta$ -catenin signaling pathway

To better understand the detailed regulation mechanism of *CCAT2* in breast cancer, we first examined whether suppressing *CCAT2* affects the Wnt signaling pathway, whose activation plays an important role in breast cancer development. Using the si-*CCAT2* group and the si-NS group of the MCF-7 and MDA-MB-231 cells, as well as the Wnt signaling inhibitor FH 535, we found that suppressing the expression of *CCAT2* decreased the levels of  $\beta$ -catenin both in the cytoplasm and nucleus via Western blot (Figure 5A), but FH 535 only affected the  $\beta$ -catenin recruitment, and the combination of si-*CCAT2* and FH 535 could induce a synergistic effect on Wnt signaling activity. Moreover, *CCAT2* knockdown reduced the expression of *CCND1* and *c-myc* (classic downstream genes of the Wnt/ $\beta$ -catenin signaling

pathway) via RT-qPCR in both MCF-7 and MDA-MB-231 cells (Figure 5B). In addition, the TOP/FOP Flash luciferase reporter system was employed in MCF-7 and MDA-MB-231 cells; the result showed that suppressing *CCAT2* expression inhibited the Wnt/ $\beta$ -catenin signaling pathway transcriptional activity, and combination of si-*CCAT2* and FH 535 could synergistically inhibit the Wnt signaling (Figure 5C). Thus, these results suggest that suppressing *CCAT2* expression affects the Wnt/ $\beta$ -catenin signaling pathway.

### Discussion

Accumulating evidence shows that lncRNAs play more and more important roles in a wide range of biological processes. Aberrant lncRNA expression is involved in many cancers, and lncRNAs have also been found to function as new regulators in cancer development.<sup>12,13</sup> For example, Huang et al reported that lncRNA ANRIL expression was elevated in hepatocellular carcinoma tissues, and the expression of ANRIL was significantly associated with tumor size and liver cancer stage. In addition, knockdown of ANRIL expression could impair cell proliferation and invasion and induce cell



**Figure 4** Suppressing *CCAT2* expression inhibits tumorigenesis in vivo.

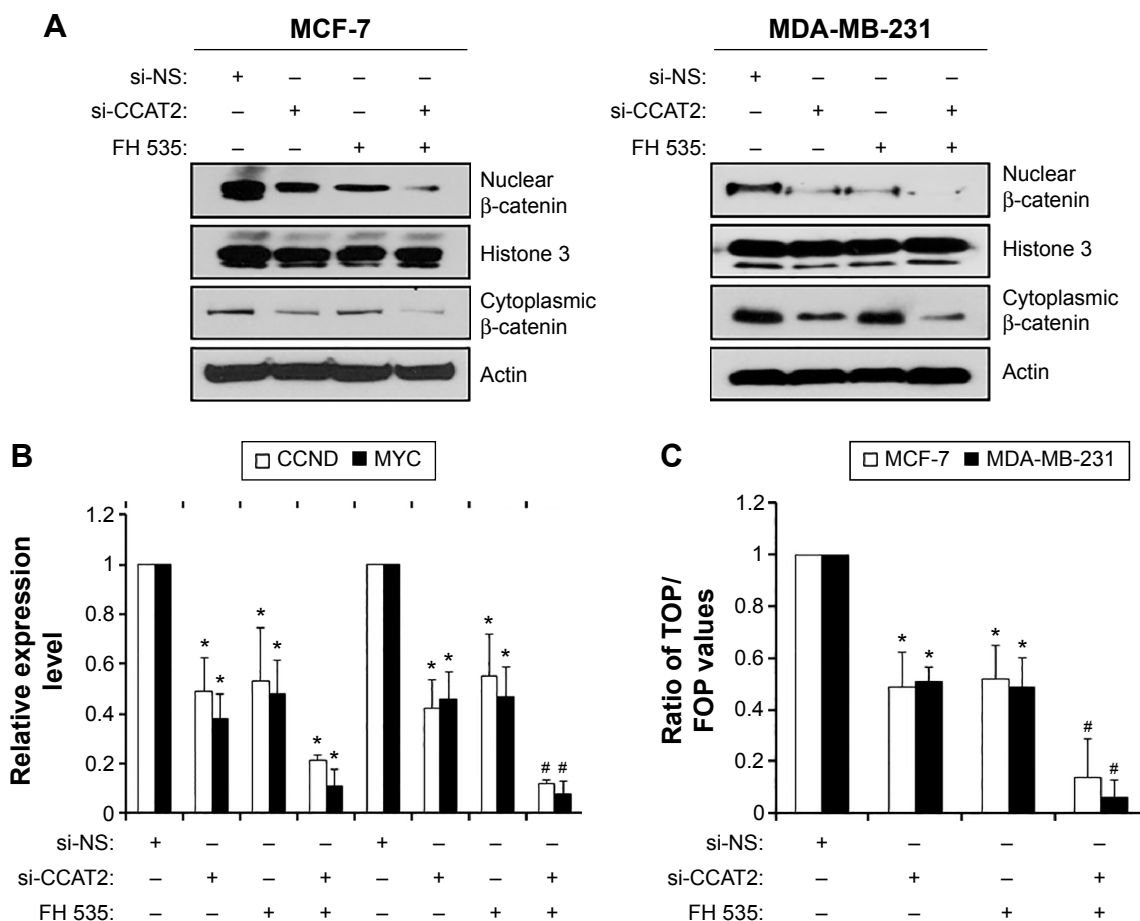
**Notes:** The tumor xenograft model was performed to investigate the effects of si-*CCAT2* on tumor formation. (A) Tumor size was calculated every 3 days after 7 days of injection. The data showed si-*CCAT2* inhibited the tumor growth of MCF-7 cells in vivo. \* $P < 0.05$  vs the control. (B) Tumors were harvested at day 24, and the actual tumor size after harvest was shown. The data showed the xenograft tumors grew slower in the si-*CCAT2* group. (C) Tumors were harvested and weighed at day 24. The data showed the tumor weight was less in the si-*CCAT2* group. \* $P < 0.05$  vs the control. (D) The relative expression level of *CCAT2* was detected via RT-qPCR. The data showed the expression was decreased in the si-*CCAT2* group. \* $P < 0.05$  versus the control.

**Abbreviations:** si-*CCAT2*, siRNA specifically targeting *CCAT2*; d, day(s); si-NS, nonspecific siRNA.

apoptosis both in vitro and in vivo.<sup>14</sup> Wang et al presented that lncRNA MEG3 was greatly downregulated in papillary thyroid carcinoma tissues with lymph node metastasis compared with primary thyroid cancer, and that the downregulation of MEG3 correlated with lymph node metastasis. Biologically, overexpression of MEG3 could inhibit the cell migration and invasion in thyroid cancer cell lines.<sup>15</sup> These authors have shown that lncRNAs can function as oncogenes or tumor suppressors during cancer progression.

Recently, identification of lncRNAs as biomarkers has helped us to diagnose cancer earlier. For example, Isin et al investigated the exosomal lncRNA GAS5 and lincRNA-p21 levels in urine samples from 30 patients with prostate cancer and 49 patients with benign prostatic hyperplasia. They observed a significant difference in the exosomal lncRNA-p21 levels between prostate cancer and benign prostatic hyperplasia patients.<sup>16</sup> Xu et al evaluated the feasibility and clinical significance of circulating serum lncRNA RP11-445H22.4 as a biomarker for the detection of breast cancer, and they found a correlation between the levels of serum lncRNA RP11-445H22.4 in breast cancer patients and the clinicopathological factors of these patients.<sup>17</sup> Identification of special lncRNAs as biomarkers may help us improve the diagnostic prediction of the malignant state of patients with cancer. Some investigators

have begun to identify lncRNAs whose expression is associated with aberrant signaling or unregulated survival of breast cancer cells.<sup>18</sup> The overexpression of lncRNA HOTAIR has been associated with enhanced metastasis and invasion of breast cancer cells and can be used as a predictor of overall survival and progression-free survival.<sup>19</sup> The expression of lncRNA GAS5 is downregulated in breast cancer samples relative to adjacent unaffected normal breast tissue, and has a distinct tumor suppressive role in breast cancer by inducing apoptosis and suppressing cell proliferation.<sup>20</sup> The expression of *CCAT2* in normal breast tissue and breast cancer tissue was evaluated, and the results showed that *CCAT2* may represent a valuable predictive marker of clinical outcomes (shorter metastases-free survival and overall survival) for a specific subgroup of breast cancer patients, in whom high levels of *CCAT2* will indicate that these patients will not benefit from CMF (cyclophosphamide, methotrexate, and 5-fluorouracil) adjuvant chemotherapy.<sup>7</sup> In our research, we presented that the expression of *CCAT2* was significantly upregulated in breast cancer tissues and breast cancer cell lines, and the expression of *CCAT2* correlated with clinical prognostic factors. Biologically, suppressing the expression of *CCAT2* could inhibit cell proliferation and invasion in vitro and tumor formation in vivo. With the use of innovative technologies,



**Figure 5** Suppressing *CCAT2* expression affects the Wnt/ $\beta$ -catenin signaling pathway.

**Notes:** (A) A Western blot assay was performed to detect the  $\beta$ -catenin content in the nucleus and cytoplasm of MCF-7 and MDA-MB-231 cells treated with *CCAT2* siRNA or Wnt signaling inhibitor FH 535 (10  $\mu$ M) for 48 hours. The data showed that si-*CCAT2* inhibited the  $\beta$ -catenin expression at transcriptional level. Histone 3 was used as an internal control for nuclear protein and actin was used as the control for cytoplasm protein. (B) The CCND1 and c-myc expression levels were detected by a RT-qPCR assay. The MCF-7 and MDA-MB-231 cells were treated with si-*CCAT2* or 10  $\mu$ M FH 535, alone or combined, for 48 hours. GAPDH was used as an internal control. (C) TOP/FOP Flash detection system was used to investigate the effects of si-*CCAT2* or FH 535, alone or combined, on Wnt/ $\beta$ -catenin in MCF-7 and MD-MB-231 cells. The data showed si-*CCAT2* inhibited the  $\beta$ -catenin transcriptional activity. The experiments were all repeated at least three times. \* $P < 0.05$ , and # $P < 0.001$  vs the control.

**Abbreviations:** RT-qPCR, reverse transcription quantitative polymerase chain reaction; si-*CCAT2*, siRNA specifically targeting *CCAT2*; GAPDH, glyceraldehyde-3-phosphate dehydrogenase; si-NS, nonspecific siRNA.

it is now possible to find more ncRNAs used for diagnosis and prognosis of breast cancer. The biological functions and molecular mechanisms for these lncRNAs should be fully explored in the future.

Accumulating evidence indicates that the Wnt/ $\beta$ -catenin signaling pathway contributes to the neoplastic process, of which  $\beta$ -catenin is one of the key downstream effectors.<sup>21</sup> An inappropriate activation of the Wnt/ $\beta$ -catenin signaling pathway leads to the development of human cancers, including breast cancer.<sup>22</sup> The upstream factors of the Wnt/ $\beta$ -catenin signaling pathway and their regulation of carcinogenesis and metastasis in breast cancers is still not well understood.<sup>23</sup> In the current paper, we found that the abnormal expression of *CCAT2* could influence the Wnt signaling pathway by suppressing  $\beta$ -catenin activity. Using cytoplasmic and nuclear protein isolation, we found that knockdown of *CCAT2*

suppressed both the cytoplasmic and nuclear  $\beta$ -catenin level, suggesting that *CCAT2* regulates  $\beta$ -catenin level at the transcriptional level; however, the Wnt signaling inhibitor FH 535, which only affects the  $\beta$ -catenin recruitment to target gene promoter, did not affect the cytoplasm  $\beta$ -catenin but only affected the nuclear accumulation of  $\beta$ -catenin. Nevertheless, combination of si-*CCAT2* and FH 535 in breast cancer cells indeed had a synergetic effect on Wnt signaling activity. Given the fact that *CCAT2* regulates Wnt signaling, it would be helpful for personalized therapy in breast cancer. For example, for patients with high *CCAT2* expression, targeting Wnt signaling could be a therapeutic strategy.

## Conclusion

Overall, our findings broaden the scope of known lncRNA *CCAT2* functions and aids in the discovery and design of

more effective and evidence-based therapeutic targets for the treatment of breast cancer.

## Disclosure

The authors report conflict of interest in this work.

## References

1. Pelkonen M, Luostari K, Tengstrom M, et al. Low expression levels of hepsin and TMPRSS3 are associated with poor breast cancer survival. *BMC Cancer*. 2015;15:431.
2. Lv ZD, Kong B, Liu XP, et al. CXCL12 chemokine expression suppresses human breast cancer growth and metastasis in vitro and in vivo. *Int J Clin Exp Pathol*. 2014;7(10):6671–6678.
3. Kabbage M, Trimeche M, Ben Nasr H, et al. Expression of the molecular chaperone alpha B-crystallin in infiltrating ductal breast carcinomas and the significance thereof: an immunohistochemical and proteomics-based strategy. *Tumour Biol*. 2012;33(6):2279–2288.
4. Huang J, Zhou N, Watabe K, et al. Long non-coding RNA UCA1 promotes breast tumor growth by suppression of p27 (Kip1). *Cell Death Dis*. 2014;5:e1008.
5. Chi Y, Huang S, Yuan L, et al. Role of BC040587 as a predictor of poor outcome in breast cancer. *Cancer Cell Int*. 2014;14(1):123.
6. Ling H, Spizzo R, Atlasi Y, et al. CCAT2, a novel noncoding RNA mapping to 8q24, underlies metastatic progression and chromosomal instability in colon cancer. *Genome Res*. 2013;23(9):1446–1461.
7. Redis RS, Sieuwerts AM, Look MP, et al. CCAT2, a novel long non-coding RNA in breast cancer: expression study and clinical correlations. *Oncotarget*. 2013;4(10):1748–1762.
8. Qiu M, Xu Y, Yang X, et al. CCAT2 is a lung adenocarcinoma-specific long non-coding RNA and promotes invasion of non-small cell lung cancer. *Tumour Biol*. 2014;35(6):5375–5380.
9. Wang J, Qiu M, Xu Y, et al. Long noncoding RNA CCAT2 correlates with smoking in esophageal squamous cell carcinoma. *Tumour Biol*. 2015;36(7):5523–5528.
10. Wang CY, Hua L, Yao KH, Chen JT, Zhang JJ, Hu JH. Long non-coding RNA CCAT2 is up-regulated in gastric cancer and associated with poor prognosis. *Int J Clin Exp Pathol*. 2015;8(1):779–785.
11. De P, Sun Y, Carlson JH, Friedman LS, Leyland-Jones BR, Dey N. Doubling down on the PI3K-AKT-mTOR pathway enhances the anti-tumor efficacy of PARP inhibitor in triple negative breast cancer model beyond BRCA-ness. *Neoplasia*. 2014;16(1):43–72.
12. Gerasimova E, Audit B, Roux SG, et al. Wavelet-based multifractal analysis of dynamic infrared thermograms to assist in early breast cancer diagnosis. *Front Physiol*. 2014;5:176.
13. Hauptman N, Glavac D. Long non-coding RNA in cancer. *Int J Mol Sci*. 2013;14(3):4655–4669.
14. Huang M, Chen WM, Qi FZ, et al. Long non-coding RNA ANRIL is up-regulated in hepatocellular carcinoma and promotes cell apoptosis by epigenetically silencing of KLF2. *J Hematol Oncol*. 2015;8:50.
15. Wang C, Yan G, Zhang Y, Jia X, Bo P. Long non-coding RNA MEG3 suppresses migration and invasion of thyroid carcinoma by targeting of Rac1. *Neoplasia*. 2015;62(4):541–549.
16. Isin M, Uysaler E, Ozgur E, et al. Exosomal lncRNA-p21 levels may help to distinguish prostate cancer from benign disease. *Front Genet*. 2015;6:168.
17. Xu N, Chen F, Wang F, et al. Clinical significance of high expression of circulating serum lncRNA RP11-445H22.4 in breast cancer patients: a Chinese population-based study. *Tumour Biol*. Epub 2015 May 1.
18. Hayes EL, Lewis-Wambi JS. Mechanisms of endocrine resistance in breast cancer: an overview of the proposed roles of noncoding RNA. *Breast Cancer Res*. 2015;17:40.
19. Gupta RA, Shah N, Wang KC, et al. Long non-coding RNA HOTAIR reprograms chromatin state to promote cancer metastasis. *Nature*. 2010;464(7291):1071–1076.
20. Mourtada-Maarabouni M, Pickard MR, Hedge VL, Farzaneh F, Williams GT. GAS5, a non-protein-coding RNA, controls apoptosis and is downregulated in breast cancer. *Oncogene*. 2009;28(2):195–208.
21. Nelson WJ, Nusse R. Convergence of Wnt, beta-catenin, and cadherin pathways. *Science*. 2004;303(5663):1483–1487.
22. Hwang MS, Yu N, Stinson SY, et al. miR-221/222 targets adiponectin receptor 1 to promote the epithelial-to-mesenchymal transition in breast cancer. *PLoS One*. 2013;8(6):e66502.
23. Cai K, Jiang L, Wang J, et al. Downregulation of beta-catenin decreases the tumorigenicity, but promotes epithelial-mesenchymal transition in breast cancer cells. *J Cancer Res Ther*. 2014;10(4):1063–1070.

### OncoTargets and Therapy

### Publish your work in this journal

OncoTargets and Therapy is an international, peer-reviewed, open access journal focusing on the pathological basis of all cancers, potential targets for therapy and treatment protocols employed to improve the management of cancer patients. The journal also focuses on the impact of management programs and new therapeutic agents and protocols on

Submit your manuscript here: <http://www.dovepress.com/oncotargets-and-therapy-journal>

patient perspectives such as quality of life, adherence and satisfaction. The manuscript management system is completely online and includes a very quick and fair peer-review system, which is all easy to use. Visit <http://www.dovepress.com/testimonials.php> to read real quotes from published authors.

Dovepress