



# Changes in Strain Pattern and Exercise Capacity after Transcatheter Closure of Atrial Septal Defects

Jung Yoon Kim, MD<sup>1\*</sup>, Bong-Sic Yun, MD<sup>2\*</sup>, Sunho Lee, MD<sup>1</sup>, Se Yong Jung, MD<sup>1</sup>, Jae Young Choi, MD<sup>1</sup>, and Nam Kyun Kim, MD<sup>1</sup>

<sup>1</sup>Division of Pediatric Cardiology, Department of Pediatrics, Congenital Heart Disease Center, Severance Cardiovascular Hospital, Yonsei University College of Medicine, Seoul,

<sup>2</sup>Department of Pediatrics, National Health Insurance Service Ilsan Hospital, Goyang, Korea

**Background and Objectives:** Assessment of left ventricle (LV) function by using strain and strain rate is popular in the clinical setting. However, the use of these echocardiographic tools in assessing right ventricle (RV) failure, and the manner in which they both reflect the functional capacity of the patient, remains poorly understood. This study aimed to investigate the change in exercise capacity and strain between before and (1 month) after the transcatheter closure of atrial septal defects (ASDs).

**Subjects and Methods:** Thirty patients who underwent transcatheter closure of ASD between May 2014 and June 2015 at the Division of Pediatric Cardiology, Severance Cardiovascular Hospital, were enrolled. We compared and analyzed the results of the following examinations, before and (1 month) after the procedure: echocardiography, cardiopulmonary exercise test (CPET), and N-terminal pro-brain natriuretic peptide level.

**Results:** There were no mortalities, and the male-to-female ratio was 1:2. The mean defect size was 22.3±4.9 mm; the mean ratio of pulmonary to systemic flow, 2.1±0.5; and the mean device size, 22.3±4.9 mm. Changes in global RV longitudinal (GRVL) strain and LV torsion were measured echocardiographically. Exercise capacity improved from 7.7±1.2 to 8.7±1.8 metabolic equivalents (p=0.001). These findings correlated to the change in GRVL strain (p=0.03).

**Conclusion:** The average exercise capacity increased after device closure of ASD. The change in strain was evident on echocardiography, especially for GRVL strain and LV torsion. Further studies comparing CPET and strain in various patients may show increased exercise capacity in patients with improved RV function. (**Korean Circ J 2017;47(2):245-253**)

**KEY WORDS:** Cardiopulmonary exercise tests; Atrial septal defect; Strain; Brain natriuretic peptide.

## Introduction

Functional quantification by using strain and strain rate through

**Received:** May 19, 2016

**Revision Received:** August 4, 2016

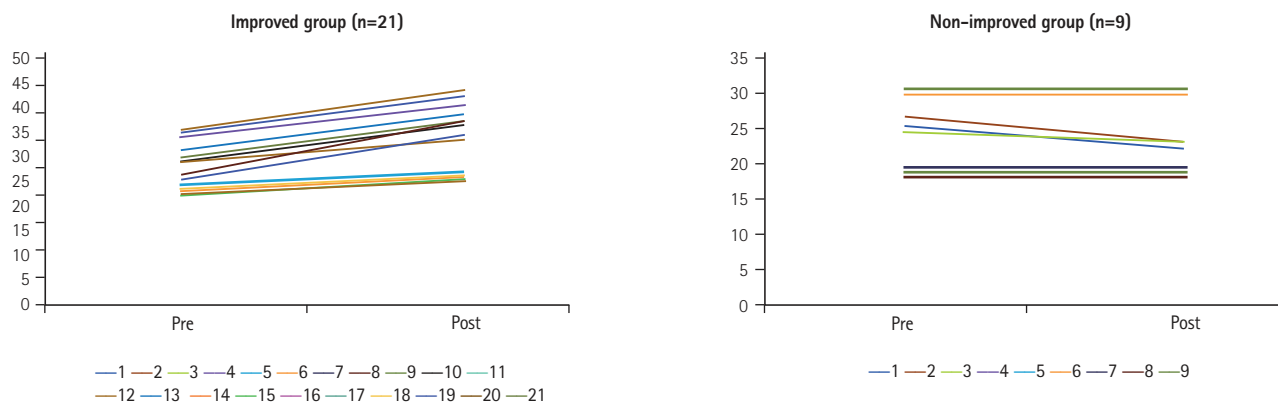
**Accepted:** October 20, 2016

**Correspondence:** Nam Kyun Kim, MD, Division of Pediatric Cardiology, Congenital Heart Disease Center, Severance Cardiovascular Hospital, 50-1 Yonsei-ro, Seodaemun-gu, Seoul 03722, Korea  
Tel: 82-2-2228-8280, Fax: 82-2-393-3080  
E-mail: pednk@yuhs.ac

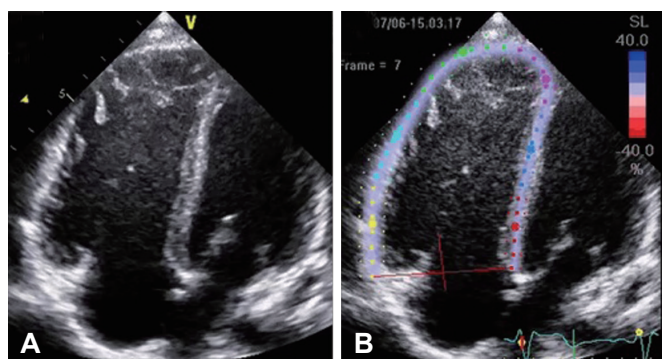
\* Jung Yoon Kim and Bong-Sic Yun contributed equally to this work.  
• The authors have no financial conflicts of interest.

This is an Open Access article distributed under the terms of the Creative Commons Attribution Non-Commercial License (<http://creativecommons.org/licenses/by-nc/3.0>) which permits unrestricted non-commercial use, distribution, and reproduction in any medium, provided the original work is properly cited.

speckle tracking echocardiography has been developed as a promising tool in recent clinical situations.<sup>1-3</sup> The recent introduction of two-dimensional (2D) strain and strain rate imaging by using the speckle tracking method for an accurate assessment of global and regional myocardial function has been studied for use in a variety of clinical settings.<sup>4-8</sup> However, the use of these tools in right ventricle (RV) failure and the manner in which they both reflect the functional capacity of patients have not yet been studied thoroughly, although the importance of RV in the management and prognosis of many cardiac diseases—such as congestive heart failure, arrhythmia, and sudden cardiac death—is increasingly being recognized.<sup>9,10</sup> In the present study, we assess the changes in RV function due to continuous RV volume overload in patients with atrial septal defects (ASDs) on the basis of strain and strain rate. Likewise, we analyze the correlation between the changes in strain and strain rate in patients at 1 month after transcatheter closure of ASD in the process of recovery from right heart failure and the changes in exercise capacity as measured



**Fig. 1.** Individual exercise capacity changed in each group. The improved group was defined as patients with improved exercise capacity before and after the procedure. The non-improved group was defined as patients with decreased or unchanged exercise capacity before and after the procedure.



**Fig. 2.** Longitudinal strain of the right ventricle, in the four-chamber view. (A) Two-dimensional image of the four-chamber view. (B) Right ventricle strain on the speckle tracking image, semi-automatically divided into six segments (basal, mid, and apical segments of the septum and those of the right ventricle free wall).

with the cardiopulmonary exercise test (CPET). By doing so, we expect to gather objective information about both the role of strain and strain rate in the assessment of RV function, and the changes in exercise capacity due to the changes in strain and strain rate in the process of RV reverse modeling.<sup>11-13)</sup> Therefore, the aim of our study was to investigate the change in exercise capacity and strain pattern before transcatheter closure of ASD and at 1 month after the procedure.

## Subjects and Methods

### Patients

A total of 30 patients who underwent transcatheter closure of ASD between May 2014 and June 2015 at our institution were enrolled. All patients consented to an agreement approved by the institutional review board of the Human Research Protection Center of the

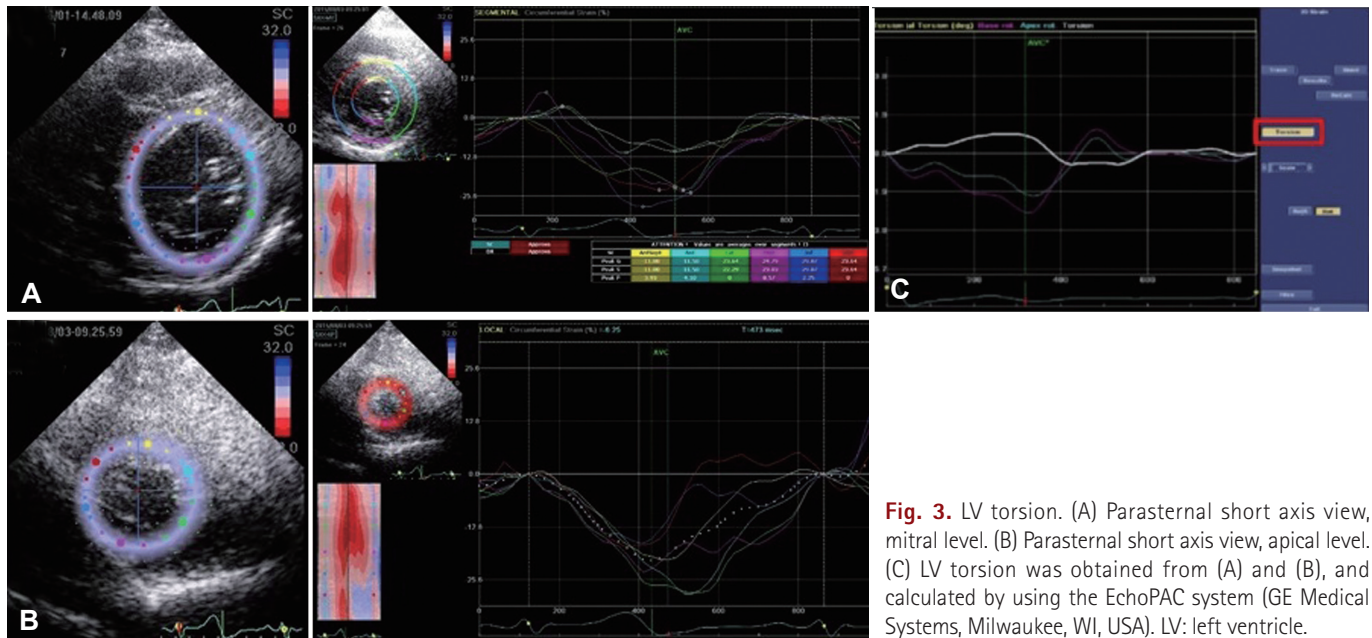
Severance Hospital Yonsei University Health System (IRB no. 2013-0104-001). Twenty-one patients were included in the 'improved' group, which was defined as patients with improved exercise capacity before and after the procedure; and nine patients were included in the 'non-improved' group, which was defined as patients with decreased or unchanged exercise capacity before and after the procedure (Fig. 1). We excluded all patients who concurrently had pulmonary hypertension at the time of diagnosis (which was defined as a mean pulmonary arterial pressure of  $\geq 25$  mmHg on cardiac catheterization), as well as those who did not want to continue with the study after 1 month.

### Transthoracic echocardiography

All examinations were performed with subjects in the supine position, using a GE E9 machine (Vivid 9; GE Medical Systems, Milwaukee, WI, USA). To minimize inter-observer and intra-observer variations, one well-trained person performed all examinations. Strain and torsion were calculated from the obtained 2D echocardiographic data by using the EchoPAC system software (GE Medical Systems, Milwaukee, WI, USA). The global RV longitudinal (GRVL) strain, obtained through a full RV myocardium method, was calculated on the basis of the entire trace contour of the RV via apical four-chamber view 2D echocardiography (Fig. 2). Moreover, LV torsion was determined from the parasternal short-axis view of the 2D echocardiogram at the mitral valve (basal) and apical levels (Fig. 3). To minimize inter-observer and intra-observer variations, semi-automatic endocardial border tissue tracing was performed at an average of three times per study.

### Laboratory test

In all patients, venous blood samples were collected before the procedure and at 1 month after the procedure. N-terminal pro-



**Fig. 3.** LV torsion. (A) Parasternal short axis view, mitral level. (B) Parasternal short axis view, apical level. (C) LV torsion was obtained from (A) and (B), and calculated by using the EchoPAC system (GE Medical Systems, Milwaukee, WI, USA). LV: left ventricle.

brain natriuretic peptide (NT-proBNP) and mean platelet volume (MPV) were also measured in this study.<sup>14)15)</sup>

### Cardiopulmonary exercise test

All patients carried out a maximal, symptom-limited (fatigue or dyspnea) CPET by using the Bruce ramp protocol.<sup>16)</sup> Patients were encouraged to continue with the exercise for as long as they could. The maximal oxygen consumption ( $VO_2$ max), carbon dioxide production ( $VCO_2$ ), minute ventilation (VE), work load, lactate threshold (LT), and age-predicted exercise capacity (APEC) were measured by using breath-by-breath gas analysis. A standard 12-lead electrocardiogram was continuously recorded. Blood pressure was measured with a cuff sphygmomanometer.  $VO_2$ max was defined as the amount of oxygen consumed by the body at the peak of tolerable exercise.  $VE/VCO_2$  was defined as ventilator efficiency. The LT was defined as the point at which oxygen delivery to the muscles failed to meet 100% of demand, requiring anaerobic metabolism to supplement the energy requirements. The initial phase of CPET lasts until 50-60% of  $VO_2$ max is reached. VE increases linearly with  $VO_2$  and reflects aerobically produced  $CO_2$  in muscles. The blood lactate levels do not change during this phase. During the latter half of the exercise, anaerobic metabolism occurs because the oxygen supply cannot meet the increasing metabolic demands of the exercising muscles. At this time, there is a significant increase in lactate production in the muscle and in blood lactate concentration. The  $VO_2$  at the onset of blood lactate accumulation is called the LT. All patients underwent CPET before the procedure and at 1 month after the procedure, each according

to protocol.

### Statistical analysis

Statistical analysis was performed by using SAS (version 9.3; SAS Inc., Cary, NC, USA). Continuous values are reported as mean±standard deviation. The Shapiro-Wilk test was used to check for normality of distribution. If the data followed a normal distribution, a paired t-test was used to compare the differences in parameters before the closure and 1 month after the procedure, and the independent t-test was used to compare the differences between the improved and non-improved groups. If the data did not follow a normal distribution, the Wilcoxon signed-rank test was used to compare the differences in parameters before the closure and 1 month after the procedure, and the Mann-Whitney U-test was used to compare the differences between the improved and non-improved groups. The comparisons of differences between before and after the procedure in each group were analyzed by using a linear mixed model. A p value was obtained from Fisher's exact test. Differences were considered to be statistically significant when the p value was <0.05.

## Results

### Baseline patient characteristics

Transcatheter ASD closure with the Amplatzer septal occluder (AGA Medical Corporation, Golden Valley, MN, USA) device was successfully performed for all patients. The patient characteristics

are presented in Table 1. Their mean age was  $34.5 \pm 12.1$  years (range, 15–55 years), and the male-to-female ratio was 1:2. The peak RV pressure (pRVP) was  $36.6 \pm 10.8$  mmHg, and the mean ratio of pulmonary to systemic blood flow (Qp/Qs) was  $2.1 \pm 0.5$ . The mean size of the implanted device was  $22.3 \pm 4.9$  mm. There was no mortality; and there were no major complications such as device embolization, cardiac tamponade, life-threatening arrhythmias, or vascular complications requiring surgery. After 1 month of follow-up, there was no residual shunt.

### Parameters before and after the procedure

All patient results before and after ASD closure are provided in Table 2. In CPET, the  $\text{VO}_2\text{max}$  ( $27.0 \pm 4.5$  to  $31.3 \pm 6.9$  mL·kg<sup>-1</sup>·min<sup>-1</sup>,  $p < 0.0001$ ), metabolic equivalents (METs) ( $7.7 \pm 1.2$  to  $8.7 \pm 1.8$  METs,  $p < 0.0001$ ), and APEC ( $72.0 \pm 20.6\%$  to  $78.7 \pm 20.1\%$ ,  $p = 0.0013$ ) were significantly improved after ASD closure. NT-proBNP ( $87.9 \pm 55.9$  to  $118.3 \pm 91.3$  pg/mL,  $p = 0.0071$ ) and MPV ( $8.0 \pm 0.7$  to  $9.0 \pm 1.4$  fL,  $p = 0.0067$ ) were both significantly increased after ASD closure. In the

strain parameters, LV torsion was increased significantly ( $10.4 \pm 2.3^\circ/\text{ms}$  to  $12.7 \pm 3.0^\circ/\text{ms}$ ,  $p = 0.001$ ). GRVL strain was decreased; however, the difference was not statistically significant ( $p = 0.0528$ ). The VE/ $\text{VCO}_2$  slope was not significantly changed.

### Comparison between the improved and non-improved groups in CPET

To find the correlation between CPET results and strain, the patients were divided into an 'improved' group ( $n = 21$ ) with increased  $\text{VO}_2\text{max}$  and a 'non-improved' group ( $n = 9$ ) with unchanged or decreased  $\text{VO}_2\text{max}$ . Fig. 1 shows the changes in individual exercise capacity within each group. The sex composition and age, Qp/Qs, and RV pressure (RVP) were similar between the two groups. However, the device size was significantly greater in the improved group ( $23.7 \pm 4.8$  vs.  $19.0 \pm 3.5$  mm,  $p = 0.014$ ) (Table 3). In the comparison of differences in CPET between the two groups before the closure and 1 month after the procedure, APEC was significantly higher in the improved group ( $78.2 \pm 20.5\%$  vs.  $57.7 \pm 12.6\%$ ,  $p = 0.0099$ ) before the procedure, and the other parameters except for VE/ $\text{VCO}_2$  were increased significantly in the improved group after the procedure (Table 4).

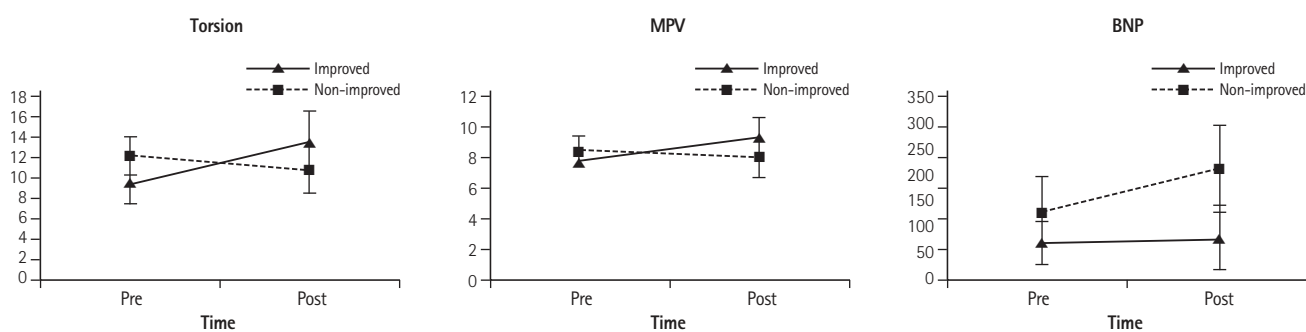
**Table 1.** Characteristics of the patients in this study ( $n = 30$ )

Characteristics	Values
Age (years)	$34.5 \pm 12.1$
Sex (M:F)	1:2
Weight (kg)	$63.9 \pm 23.3$
Height (cm)	$167.9 \pm 34.4$
BSA (m <sup>2</sup> )	$1.8 \pm 0.5$
RVP (mmHg)	$36.6 \pm 10.8$
Qp/Qs	$2.1 \pm 0.5$
Device size (mm)	$22.3 \pm 4.9$
Major complication	None
Residual shunt	None

Values are presented as mean  $\pm$  standard deviation. BSA: body surface area, RVP: right ventricle pressure, Qp/Qs: ratio of pulmonary to systemic flow

### Comparison of NT-proBNP and MPV between the improved and non-improved groups before and after the procedure

NT-proBNP was significantly higher in the non-improved group than in the improved group before closure ( $35\text{--}100$  vs.  $82\text{--}211$  pg/mL,  $p = 0.0087$ ) and at 1 month after the procedure ( $31\text{--}85$  vs.  $131\text{--}305$  pg/mL,  $p = 0.0004$ ) (Table 5), (Fig. 4). In the comparison of each group before the closure and 1 month after the procedure, NT-proBNP was only increased significantly post-procedure in the non-improved group ( $p < 0.0001$ ) (Table 5). MPV showed no difference between the two groups ( $p = 0.1457$ ) before the procedure, but it was significantly larger in the improved group ( $8.1\text{--}10.3$  vs.  $7.1\text{--}9.6$  fL,  $p = 0.0174$ ) at 1 month after the procedure (Table 6). In the comparison of each group



**Fig. 4.** Mean profile graphs of the differences between groups. MPV: mean platelet volume, BNP: brain natriuretic peptide.

**Table 2.** Parameters measured before and after transcatheter closure of atrial septal defects

Parameters		Pre-procedure	Post-procedure	p
CPET	VO <sub>2</sub> max (mL·kg <sup>-1</sup> ·min <sup>-1</sup> )	27.0±4.5	31.3±6.9	<0.0001
	Work load (METs)	7.7±1.2	8.7±1.8	<0.0001
	APEC (%)	72.0±20.6	78.7±20.1	0.0013
	LT (mL·kg <sup>-1</sup> ·min <sup>-1</sup> )	19.7±3.4	21.5±4.5	0.1279
	VE/VCO <sub>2</sub> *	29.3±5.2	29.1±5.1	0.6856
Lab	NT-proBNP (pg/mL)	87.9±55.9	118.3±91.3	0.0071
	MPV (fL)	8.0±0.7	9.0±1.4	0.0067
Strain	LV torsion (°/ms)	10.4±2.3	12.7±3.0	0.001
	GRVL strain (%/ms)	-21.3 (-24.2 to -17.9)	-18.8 (-24.1 to -15.8)	0.0528

Values are presented as mean±standard deviation. \*VE/VCO<sub>2</sub>: <30: normal, >60: suspected severe cardiopulmonary disease. CPET: cardiopulmonary exercise capacity test, METs: metabolic equivalents, APEC: age-predicted exercise capacity, LT: lactate threshold, VE/VCO<sub>2</sub>: minute ventilation/carbon dioxide production, NT-proBNP: N-terminal brain natriuretic peptide, MPV: mean platelet volume

**Table 3.** Comparison of characteristics between the improved and non-improved groups

Characteristics	Total	Improved (n=21)	Non-improved (n=9)	p
Sex				>0.999*
Male	10	7	3	
Female	20	14	5	
Age (years)	34.5±12.1	34.6±11.4	34.2±14.3	0.9436
Device size (mm)	22.3±4.9	23.7±4.8	19.0±3.5	0.0140
Qp/Qs	2.1 (1.8-2.3)	1.9 (1.7-2.2)	2.2 (2.0-2.4)	0.0932
RVP (mmHg)	32 (30-40)	31 (30-40)	35 (31-45)	0.3132

Values are presented as mean±standard deviation. \*The p value is from Fisher's exact test. Qp/Qs: ratio of pulmonary to systemic flow

**Table 4.** Comparisons of CPET between the improved and non-improved groups before and after the procedure

	Improved (n=21)	Non-improved (n=9)	p
Pre			
VO <sub>2</sub> max (mL·kg <sup>-1</sup> ·min <sup>-1</sup> )	27.7±4.2	25.4±4.9	0.1876
Work load (METs)	7.87±1.1	7.24±1.3	0.1841
APEC (%)	76 (60-100)	52 (48-71)	0.0067
LT (mL·kg <sup>-1</sup> ·min <sup>-1</sup> )	19.7 (17.4-20.5)	20.3 (16.4-26.8)	0.4972
VE/VCO <sub>2</sub>	26.3 (25.3-31)	29.3 (27.9-31.6)	0.0573
Post			
VO <sub>2</sub> max (mL·kg <sup>-1</sup> ·min <sup>-1</sup> )	34.2±5.5	24.6±4.9	0.0001
Work load (METs)	9.43±1.4	6.9±1.4	0.0001
APEC (%)	89 (81-100)	52 (43-75)	0.0003
LT (mL·kg <sup>-1</sup> ·min <sup>-1</sup> )	23.6±3.2	16.7±3.3	<0.0001
VE/VCO <sub>2</sub>	26.8 (24.8-35.2)	27.5 (27.1-27.6)	0.7004

Values are presented as mean±standard deviation. CPET: cardiopulmonary exercise capacity test, VO<sub>2</sub>max: maximal oxygen consumption, METs: metabolic equivalents, APEC: age-predicted exercise capacity, LT: lactate threshold, VE/VCO<sub>2</sub>: minute ventilation/carbon dioxide production

**Table 5.** Comparison of NT-proBNP between the improved and non-improved groups

NT-proBNP (pg/mL)*	Total	Improved (n=21)	Non-improved (n=9)	p
Pre	73.5 (55–121)	65 (35–110)	87 (82–211)	0.0087
Post	85 (35–195)	81 (31–85)	195 (131–305)	0.0004
p value	0.0071	0.4527	<0.0001	

\*Reference range=0–88 pg/mL. NT-proBNP: N-terminal pro-brain natriuretic peptide

**Table 6.** Comparison of MPV between the improved and non-improved groups before and after the procedure

	Total	Improved (n=21)	Non-improved (n=9)	p
MPV (fL)*				
Pre	8 (7.5–8.3)	7.9 (7.5–8.1)	8.3 (7.6–9.5)	0.1457
Post	9.6 (7.4–10.1)	9.7 (8.1–10.3)	7.3 (7.1–9.6)	0.0174
p value	0.0067	0.0001	0.4837	

\*Reference range=7.4–12.1 fL. MPV: mean platelet volume

**Table 7.** Comparison of LV torsion and GRVL strain between the improved and non-improved groups before and after the procedure

	Total	Improved (n=21)	Non-improved (n=9)	p
LV torsion				
Pre	10.4±2.4	9.7±2.1	12.2±1.9	0.0046
Post	12.7±3.1	13.5±3.0	10.8±2.3	0.0208
p value	0.001	<0.0001	0.0911	
GRVL strain				
Pre	-21.3 (-24.2 to -17.9)	-21.6 (-24.2 to -20.3)	-17.5 (-23.8 to -17.3)	0.1295
Post	-18.8 (-24.1 to -15.8)	-18.1 (-20.8 to -15.8)	-27.2 (-28.0 to -16.4)	0.1132

Values are presented as mean±standard deviation. LV: left ventricle, GRVL: global right ventricular longitudinal strain

between before the closure and 1 month after the procedure, MPV was significantly larger post-procedure than pre-procedure in the improved group ( $p=0.0001$ ), and was not significantly different at pre-procedure and post-procedure in the non-improved group ( $p=0.4837$ ) (Table 6).

### Comparison of the strain pattern between the improved and non-improved groups before and after the procedure

LV torsion was significantly higher in the non-improved group ( $12.2\pm 1.9^\circ/\text{ms}$  vs.  $9.7\pm 2.1^\circ/\text{ms}$ ,  $p=0.0046$ ) (Table 7). LV torsion was significantly increased post-procedure ( $13.5\pm 3.0^\circ/\text{ms}$  vs.  $9.7\pm 2.1^\circ/\text{ms}$ ,  $p<0.0001$ ) in the improved group, but was decreased post-procedure ( $10.8\pm 2.3^\circ/\text{ms}$  vs.  $12.2\pm 1.9^\circ/\text{ms}$ ) in the non-improved group, with no statistical significance ( $p=0.0911$ ) (Table 7), (Fig. 4). Although there was no significant difference in GRVL strain between the improved and non-improved groups at pre-procedure and post-procedure ( $p=0.1295$ ,  $p=0.1132$ ), a tendency toward a decrease post-procedure ( $-18.1$  [-20.8 to -15.8]%/ms) as compared with pre-procedure

( $-21.6$  [-24.2 to -20.3]%/ms) was observed in the improved group, as well as an increase post-procedure ( $-27.2$  [-28.0 to -16.4]%/ms) as compared with pre-procedure ( $-17.5$  [-23.8 to -17.3]%/ms) in the non-improved group (Table 7).

### Discussion

For decades, echocardiographic methods have been developed to accurately evaluate heart function in various cardiovascular diseases. Conventional echocardiography, which is focused on the subjective functional assessment of ventricles through "eyeballing" 2D clips, is still the most frequently used technique in routine clinical settings.<sup>17)</sup> Although conventional echocardiography is considered to be reliable for the assessment of heart function, the visual assessment of wall motion and thickening for the estimation of heart function is very subjective and is highly dependent on the operator. It is also subject to inter-observer and intra-

observer variabilities, and allows for only a limited assessment of radial displacement and deformation, without the possibility of evaluating myocardial shortening and twisting. These limitations may be overcome through the measurement of regional myocardial deformation parameters with strain and strain rate. Few clinical studies have demonstrated the usefulness of the evaluation of myocardial function by using strain and strain rate in children and adults; however, the obtained information remains insufficient.<sup>18)</sup> According to a few studies, GRVL strain seemed to be a sensible and stable indicator of RV function (dependent on loading conditions). Therefore, our study aimed to prove the usefulness of the assessment of RV function by using strain and its correlation with exercise capacity and echocardiographic parameters.

Although the size of the defect in the improved group was large, the pre-procedure NT-proBNP and MPV levels were lower than in the non-improved group, and only APEC was high in the CPET. Moreover, the lower LV torsion and higher GRVL strain in the non-improved group pre-procedure was believed to be due to the difference in the right-side volume overload caused by the left to right shunt, affected by the difference in defect sizes. Although our study excluded patients with pulmonary hypertension, Nagaya et al.<sup>19)20)</sup> reported that the existence of pulmonary hypertension in patients with increased NT-proBNP was important, and that the NT-proBNP level was higher with pressure overload than with volume overload. Kaya et al.<sup>14)</sup> reported that MPV, an indicator of platelet activation, was significantly higher and correlated with pulmonary hypertension in patients with ASD, and may also be used as an adjunctive diagnostic tool in diagnostic pulmonary hypertension. The change of MPV was not significantly correlated with the results of both groups because our study (as mentioned above) excluded patients with pulmonary hypertension. Likely, the change of MPV with each group from before to after the procedure was considered to be the result of hemodynamic changes due to the rapidly-decreased RV volume/mass ratio after the procedure. On the basis of the normalization of the RV volume after ASD device closure, it may be considered that the decreased range of RV motion resulted in decreased GRVL strain.

Furthermore, Gorcsan and Suffoletto<sup>9)</sup> explained the decreased exercise capacity shown in CPET in ASD patients. In this study, although there was no difference in RVP or Qp/Qs between the two groups, the changes in the NT-proBNP level between pre-procedure and post-procedure were more apparent in the non-improved group than in the improved group. In addition, considering the difference in APEC as shown in CPET before the procedure-and considering the fact that the VE/VCO<sub>2</sub> slope was more shallow in the improved group than in the non-improved group both before and after the procedure (although not statically significant, as the

pRVP in the two groups were in the reference range)-the possible risks of pulmonary hypertension had caused the change in the level of exercise capacity.

Along with the change in the NT-proBNP level after the procedure, LV torsion was decreased in the non-improved group, whereas it was increased in the improved group. As a result, the levels were lower in the improved group than in the non-improved group. This result significantly correlates with the change in the NT-proBNP level and the improvement of exercise capacity in patients with ASD device closure in our study. According to Dong et al.,<sup>21)</sup> and Wu et al.,<sup>22)</sup> early LV dysfunction occurred after defect closure and the shutdown of the left-right (L-R) shunt, which was shown to be more significant in the non-improved group. According to Giardini et al.,<sup>23)</sup> this implied that before defect closure, a high volume overload was applied to the RV owing to the difference in the L-R shunt amount, which was affected by the difference in the defect size. Moreover, after the procedure and closure of the shunt, the preload applied by the volume overload was removed; however, the increase in left atrial pressure due to the increase in pulmonary vein pressure, and thus the increase in pulmonary artery pressure, increased the RV afterload in sequence, leading to the consequence. After the procedure and the shutdown of the L-R shunt, the under-loaded LV underwent reverse remodeling owing to increased LV volume and cardiac output. The GRVL strain was decreased in all patients after the procedure in our study. It was definitely decreased in the improved group as compared with the non-improved group after the procedure. This decrease was believed to be a process of reverse remodeling of the RV while reducing the RV volume overload after the procedure. On the other hand, the GRVL strain of the non-improved group was significantly increased after the procedure, showing that the reverse remodeling of the RV was insufficient after the procedure. Therefore, the increased GRVL strain was highly correlated with the decreased or unchanged exercise capacity in the non-improved group. NT-proBNP was significantly higher in dilated cardiomyopathy or heart failure, and it correlated with LV stretch.<sup>24)</sup> Our study showed that NT-proBNP was significantly increased according to the normalized under-loaded LV after the procedure. Accordingly, the increase in LV torsion was strongly correlated with increasing exercise capacity. Therefore, the increased exercise capacity after ASD device closure strongly correlated with the change in GRVL strain, LV torsion, and NT-proBNP.

This study has some limitations. The overall patient number was small, and the follow-up period was short. However, its strength lies in showing that RV remodeling and the differences in several parameters before and after transcatheter closure of ASD was the main cause of the short-term difference in exercise capacity after

the procedure. Furthermore, along with additional data collection and the use of pulmonary vascular resistance or CPET data other than RVP, NT-proBNP, MPV, LV torsion, and GRVL strain—a scoring system should be invented to estimate the prognosis of the exercise capacity or the level of heart failure in patients after the closure of a large ASD.

### Conclusion

This study showed that patients recovered their exercise capacity after the transcatheter closure of ASD. The recovery of exercise capacity showed that this correlated with the degree of decreased GRVL strain and the degree of increased NT-proBNP and LV torsion before and after the procedure. Through this correlation, the above-mentioned parameters are expected to be useful prognostic factors for recovery of exercise capacity in patients with ASD device closure. Larger studies are needed to prove the reproducibility of strain and the feasibility of its use as a practical tool for the assessment of RV function in routine clinical settings.

### Acknowledgments

This work was supported by the research fund of the Korean Society of Cardiology (201203-1).

### References

- D'Hooge J, Herbots L, Sutherland GR. Quantitative assessment of intrinsic regional myocardial deformation by Doppler strain rate echocardiography in humans. *Circulation* 2003;107:e49; author reply e49.
- Mooman-Smook JC, Brink PA. Striving towards the ideal cardiac functional assessment strategy: the contribution of tissue Doppler, strain and strain rate imaging. *Cardiovasc J Afr* 2007;18:387-92.
- Baur LH. Strain and strain rate imaging: a promising tool for evaluation of ventricular function. *Int J Cardiovasc Imaging* 2008;24:493-4.
- Pislaru C, Pellikka PA. Tissue Doppler and strain-rate imaging in cardiac ultrasound imaging: valuable tools or expensive ornaments? *Expert Rev Cardiovasc Ther* 2005;3:1-4.
- Vitarelli A, Conde Y, Cimino E, et al. Assessment of right ventricular function by strain rate imaging in chronic obstructive pulmonary disease. *Eur Respir J* 2006;27:268-75.
- Chen J, Cao T, Duan Y, Yuan L, Wang Z. Velocity vector imaging in assessing myocardial systolic function of hypertensive patients with left ventricular hypertrophy. *Can J Cardiol* 2007;23:957-61.
- Takeuchi M, Borden WB, Nakai H, et al. Reduced and delayed untwisting of the left ventricle in patients with hypertension and left ventricular hypertrophy: a study using two-dimensional speckle tracking imaging. *Eur Heart J* 2007;28:2756-62.
- Gorcsan J 3rd, Suffoletto MS. The role of tissue Doppler and strain imaging in predicting response to CRT. *Europace* 2008;10 (Suppl 3):iii80-7.
- Valsangiacomo Buechel ER, Mertens LL. Imaging the right heart: the use of integrated multimodality imaging. *Eur Heart J* 2012;33:949-60.
- Mertens LL, Friedberg MK. Imaging the right ventricle—current state of the art. *Nat Rev Cardiol* 2010;7:551-63.
- Brochu MC, Baril JF, Dore A, Juneau M, De Guise P, Mercier LA. Improvement in exercise capacity in asymptomatic and mildly symptomatic adults after atrial septal defect percutaneous closure. *Circulation* 2002;106:1821-6.
- Su CT, Sung TY, Lin KL, Wang JL, Yang AL. Lower exercise capacity in children with asymptomatic atrial septal defect associated with circulatory impairment. *Chin J Physiol* 2013;56:110-6.
- Weber M, Neumann T, Rau M, et al. Cardiopulmonary exercise capacity increases after interventional ASD-closure. *Z Kardiol* 2004;93:209-15.
- Kaya MG, Elcik D, Akpek M, et al. Mean platelet volume levels predict pulmonary artery hypertension in patients with atrial septal defect. *Acta Cardiol* 2014;69:161-6.
- Elsheikh RG, Hegab M, Szatmari A. NT-proBNP correlated with strain and strain rate imaging of the right ventricle before and after transcatheter closure of atrial septal defects. *J Saudi Heart Assoc* 2013;25:3-8.
- Kaminsky LA, Whaley MH. Evaluation of a new standardized ramp protocol: the BSU/Bruce Ramp protocol. *J Cardiopulm Rehabil* 1998;18:438-44.
- Friedberg MK, Mertens L. Tissue velocities, strain, and strain rate for echocardiographic assessment of ventricular function in congenital heart disease. *Eur J Echocardiogr* 2009;10:585-93.
- Bussadori C, Moreo A, Di Donato M, et al. A new 2D-based method for myocardial velocity strain and strain rate quantification in a normal adult and paediatric population: assessment of reference values. *Cardiovasc Ultrasound* 2009;7:8.
- Nagaya N, Nishikimi T, Okano Y, et al. Plasma brain natriuretic peptide levels increase in proportion to the extent of right ventricular dysfunction in pulmonary hypertension. *J Am Coll Cardiol* 1998;31:202-8.
- Nagaya N, Nishikimi T, Uematsu M, et al. Secretion patterns of brain natriuretic peptide and atrial natriuretic peptide in patients with or without pulmonary hypertension complicating atrial septal defect. *Am Heart J* 1998;136:297-301.
- Dong L, Zhang F, Shu X, et al. Left ventricular torsional deformation in patients undergoing transcatheter closure of secundum atrial septal defect. *Int J Cardiovasc Imaging* 2009;25:479-86.



22. Wu ET, Akagi T, Taniguchi M, et al. Differences in right and left ventricular remodeling after transcatheter closure of atrial septal defect among adults. *Catheter Cardiovasc Interv* 2007;69:866-71.
23. Giardini A, Donti A, Formigari R, et al. Determinants of cardiopulmonary functional improvement after transcatheter atrial septal defect closure in asymptomatic adults. *J Am Coll Cardiol* 2004;43:1886-91.
24. Li X, Chen C, Gan F, Wang Y, Ding L, Hua W. Plasma NT pro-BNP, hs-CRP and big-ET levels at admission as prognostic markers of survival in hospitalized patients with dilated cardiomyopathy: a single-center cohort study. *BMC Cardiovasc Disord* 2014;14:67.