

Disorders of the Nervous System

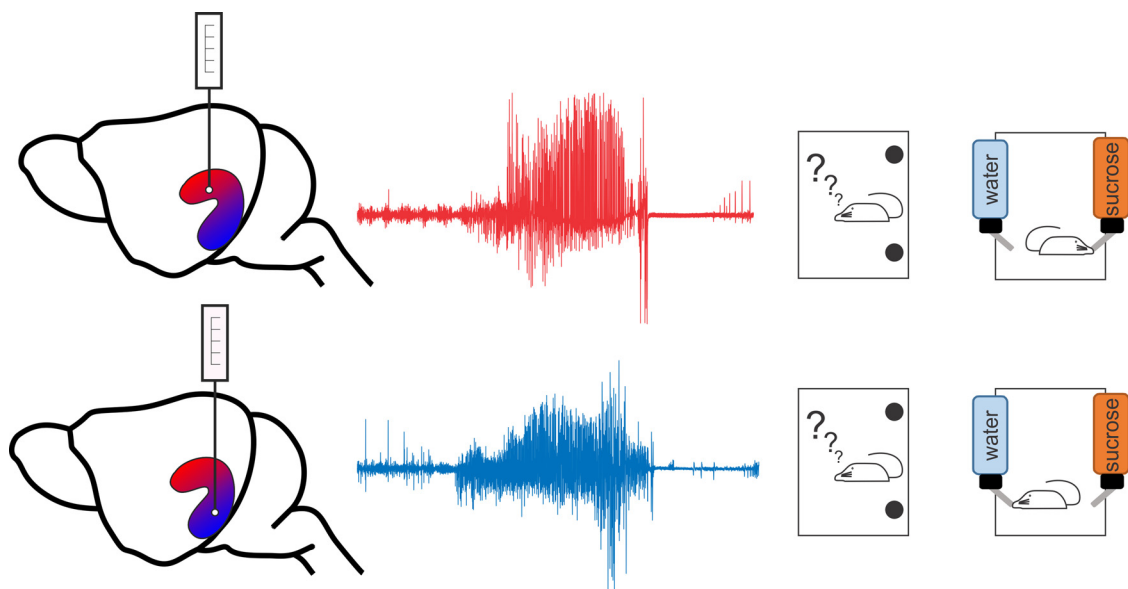
# Targeting the Mouse Ventral Hippocampus in the Intrahippocampal Kainic Acid Model of Temporal Lobe Epilepsy

<sup>1</sup>Zachary Zeidler, <sup>1</sup>Mikaela Brandt-Fontaine, <sup>3</sup>Caara Leintz, <sup>3</sup>Chris Krook-Magnuson, <sup>3</sup>Tay Netoff, <sup>2</sup>and <sup>3</sup>Esther Krook-Magnuson<sup>3</sup>

DOI:<http://dx.doi.org/10.1523/ENEURO.0158-18.2018>

<sup>1</sup>Graduate Program in Neuroscience, University of Minnesota, Minneapolis, MN 55455, <sup>2</sup>Department of Biomedical Engineering, University of Minnesota, Minneapolis, MN 55455, and <sup>3</sup>Department of Neuroscience, University of Minnesota, Minneapolis, MN 55455

## Visual Abstract



## Significance Statement

Temporal lobe epilepsy (TLE) is characterized by spontaneous recurring seizures. TLE additionally features cognitive and affective comorbidities that impair quality of life. Animal models studying TLE are critical to advance our understanding of the disorder. A current popular model targets the dorsal hippocampus with a focal injection of kainic acid to induce epilepsy. Evidence suggests that targeting the ventral hippocampus may produce a model of TLE with distinct benefits. We present data demonstrating that targeting the mouse ventral hippocampus with kainic acid creates a TLE model with seizure and cognitive phenotypes similar to the standard dorsal model, but with additional, pronounced, affective features, including anhedonia. These results describe a new tool for epilepsy researchers to better study comorbidities of TLE.

Here we describe a novel mouse model of temporal lobe epilepsy (TLE) that moves the site of kainate injection from the rodent dorsal hippocampus (corresponding to the human posterior hippocampus) to the ventral hippocampus (corresponding to the human anterior hippocampus). We compare the phenotypes of this new model—with respect to seizures, cognitive impairment, affective deficits, and histopathology—to the standard dorsal intrahippocampal kainate model. Our results demonstrate that histopathological measures of granule cell dispersion and mossy fiber sprouting maximize near the site of kainate injection. Somewhat surprisingly, both the dorsal and ventral models exhibit similar spatial memory impairments in addition to similar electrographic and behavioral seizure burdens. In contrast, we find a more pronounced affective (anhedonic) phenotype specifically in the ventral model. These results demonstrate that the ventral intrahippocampal kainic acid model recapitulates critical pathologies of the dorsal model while providing a means to further study affective phenotypes such as depression in TLE.

**Key words:** anhedonia; animal model; anxiety; depression; epilepsy; intrahippocampal kainic acid

## Introduction

Temporal lobe epilepsy (TLE) is the most common form of epilepsy in adults and features spontaneous recurring seizures in addition to cognitive and affective comorbidities, such as depression and anxiety. Despite decades of research, there is still a strong need to better understand various TLE pathologies, as evidenced by the persistence of high rates of comorbid depression (Hermann et al., 2000). Animal models of TLE have been critical in advancing the field's knowledge of TLE mechanisms and pathologies. One TLE model that has proved to be highly useful is the intrahippocampal kainic acid (IHKA) model. In this model, kainic acid (KA) is injected into the hippocampus, creating a focal insult and an acute, severe ictal period (status epilepticus). Following a latent period, this model produces spontaneous, recurring seizures as well as classic histopathological features also observed in human TLE: sprouting of mossy fibers [mossy fiber sprouting (MFS)], dispersion of granule cells [granule cell dispersion (GCD)], and hippocampal sclerosis (Bouchet and Cazauvieilh, 1825; Andersson et al., 1991; Suzuki et al., 1995; Boullieret et al., 1999; Arabadzisz et al., 2005). There are multiple advantages to the IHKA model. For one, by localizing the insult to a single region of the hippocampus,

KA cannot directly affect other aspects of the CNS or peripheral nervous system (unlike systemic models, including the intraperitoneal KA model). This is important in interpreting extrahippocampal changes following acute insult as being the result of epilepsy-related factors and not a direct effect of the chemoconvulsant. Additionally, the IHKA model has a low mortality rate compared with some other models, such as systemic pilocarpine injection. Overall, the IHKA model is a practical and informative model of TLE that exhibits important phenotypes observed in human TLE.

IHKA was first formally proposed as a model of human TLE decades ago (Cavalheiro et al., 1982; Suzuki et al., 1995; Boullieret et al., 1999). However, interest in the potential of KA to alter the hippocampal formation, both via systemic and targeted injections, had already been developing by that time (Nadler et al., 1978; Schwarcz et al., 1978). Early focal injections of KA mostly targeted the dorsal hippocampus (Schwarcz et al., 1978; Tanaka et al., 1982), and, despite some interest in investigating how changing the target of KA injection altered the behavioral and histopathological outcomes (Schwob et al., 1980; Cavalheiro et al., 1982), the dorsal hippocampus became the de facto region in which to investigate IHKA and TLE pathology (Suzuki et al., 1995; Boullieret et al., 1999).

As the epilepsy field cemented the location of IHKA injections to the dorsal hippocampus, hippocampal researchers were bringing to light important distinctions between areas along the septotemporal axis of the hippocampus. For example, the dorsal third of the hippocampus was found to project to the retrosplenial cortex, a region involved in navigation, while the ventral two-thirds of the hippocampus has projections to various amygdalar areas that are involved in emotional response (Cenquizca and Swanson, 2007). While different organizational schemes subdivide the hippocampus into various components (Amaral and Witter, 1989; Fanselow and Dong, 2010; Strange et al., 2014; Shah et al., 2016), one proposal suggests a broad division between the dorsal hippocampus (anterior in rodents, but corresponding to the human posterior hippocampus), which is involved with cognitive and memory functions, and the ventral hippocampus (posterior in rodents, but corresponding to the human anterior hippocampus), which is involved with affective processes (Moser and Moser, 1998).

Received April 20, 2018; accepted June 29, 2018; First published July 06, 2018.

The authors declare no competing financial interests.

Author contributions: Z.Z. and E.K.-M. designed research; Z.Z., M.B.-F., and C.L. performed research; Z.Z., C.K.-M., and T.N. analyzed data; Z.Z. and E.K.-M. wrote the paper.

This work was supported by the University of Minnesota MnDRIVE (Minnesota's Discovery, Research, and Innovation Economy) initiative (to Z.Z. and E.K.-M.), a National Science Foundation training grant (NSF DGE-1069104; to Z.Z.), and a National Institutes of Health grant (R03-NS-098015; to E.K.-M.).

Acknowledgments: We thank C.S. Allen for the development of the automated seizure detection system, Dr. Anna M. Lee for her technical assistance with the sucrose consumption task, Dr. Michael Benneyworth and the University of Minnesota Mouse Behavior Core for assistance with the open field and elevated plus maze, and the University of Minnesota University Imaging Centers for the use of equipment.

Correspondence should be addressed to Esther Krook-Magnuson, Department of Neuroscience, University of Minnesota, Minneapolis, MN 55455. E-mail: ekrookma@umn.edu[MAIL].

DOI:<http://dx.doi.org/10.1523/ENEURO.0158-18.2018>

Copyright © 2018 Zeidler et al.

This is an open-access article distributed under the terms of the Creative Commons Attribution 4.0 International license, which permits unrestricted use, distribution and reproduction in any medium provided that the original work is properly attributed.

Distinctions in the dorsal and ventral hippocampus manifest in both healthy and epileptic hippocampi. For example, epileptiform spontaneous bursting was noted to be more frequent in the ventral compared with dorsal hippocampus *in vitro* (Bragdon et al., 1986). Furthermore, seizures evoked by electrical stimulation of the ventral hippocampus generalize with fewer stimulations than evoked dorsal hippocampal seizures (Racine et al., 1977). Importantly, studies in human TLE patients observed that the anterior portion of the human hippocampus (corresponding to the rodent ventral hippocampus) is more ictogenic than the human posterior hippocampus (corresponding to the rodent dorsal hippocampus; Engel et al., 1990).

With mounting evidence of important distinctions between dorsal and ventral aspects of the hippocampus, both in healthy and epileptic tissue, we returned to the IHKA model and asked why it specifically targets the dorsal hippocampus. Functional and connectivity evidence indicates that targeting the ventral hippocampus with a KA injection may create a model of TLE with increased seizures and/or more generalized seizures compared with the dorsal model, a greater disruption of affective processes that could aid in addressing affective comorbidities of human TLE, as well as in establishing greater face validity to the human condition. This line of reasoning led us to target the ventral hippocampus with KA (vKA) and compare epilepsy-related phenotypes to the standard dorsal intrahippocampal KA (dKA) model. Specifically, we sought to address the following. (1) Does the vKA model recapitulate key anatomic pathologies seen in the dKA model? (2) Does the vKA model produce a distinct ictal phenotype from the dKA model, with regard to both electrographic and overt motor seizures? (3) Does the vKA model exhibit cognitive or affective phenotypes? If so, how do these compare to the dKA model?

## Materials and Methods

All animal procedures were performed in accordance with the regulations of the animal care committee of the University of Minnesota.

### Epilepsy induction and electrode implantation

Male ( $n = 24$ ) and female ( $n = 33$ ) C57B/6J mice were stereotaxically injected with either 100 nl of saline or 100 nl of 20 mM KA in saline at postnatal day 45 or greater (mean  $\pm$  SD: dKA =  $60 \pm 19$  d; vKA =  $59 \pm 20$  d; saline =  $69 \pm 23$  d). Injection coordinates for the dorsal hippocampus group, in centimeters from bregma, were as follows: anteroposterior (AP),  $-0.2$ ; mediolateral (ML),  $0.125$ ; dorsoventral (DV),  $-0.16$ . Coordinates for the ventral hippocampus were as follows: AP,  $-0.36$ ; ML,  $0.28$ ; DV,  $-0.28$ . After injection of saline or KA, the syringe was immediately withdrawn and the animal was returned to its home cage to recover. We observed no acute mortality with this dose of KA in these animals. One week after saline or KA injection, animals were implanted with a twisted wire bipolar electrode (Plastics One) approximately equidistant between the dorsal and ventral injection sites (AP,  $0.28$ ; ML,  $0.25$ ; DV,  $-0.2$ ). During all surgeries, animals were maintained on isoflurane anes-

thesia ( $\sim 2\%$ ) and a heating pad. Animals were group housed until the electrode implantation, at which point they were singly housed. No significant differences were observed between dorsally and ventrally injected saline mice; therefore, the saline subjects were collapsed into one group.

### Chronic video and local field potential monitoring and analysis

Approximately 28 d postinjection (mean  $\pm$  SD: dKA =  $27 \pm 14$  d; vKA =  $24 \pm 14$  d; saline =  $20 \pm 9$  d), animals were chronically housed with simultaneous video and local field potential (vLFP) monitoring (Krook-Magnuson et al., 2013). A subset of animals was additionally rerecorded at a later time point (dKA =  $203 \pm 11$  d post-KA; vKA =  $211 \pm 13$  d post-KA). Electrical patch cables were connected to a commutator and then amplified 5000–10,000 times (Brownlee Precision 410, Neurophase) before recording. Signal was obtained from the local differential of the two twisted wires of the electrode. Data from vLFP monitoring were continuously gathered for 2 weeks using custom Matlab-based software (a previous version of which is available through the publication by Armstrong et al., 2013). vLFP data were analyzed off-line using a combination of blinded manual seizure identification using custom software (a previous version of which is also available through the publication by Armstrong et al., 2013) and newly generated software using automated algorithms for seizure quantification and flagging of likely behavioral seizures (RRID:SCR\_016344; see Code accessibility and Extended data sections).

To ensure robust quantification of electrographic seizures, only a subset of animals with high signal-to-noise recordings underwent analysis (12 dKA subjects; 11 vKA subjects; 10 saline subjects). Electrographic seizures were quantified using an automated algorithm set to customized parameters for each subject. These parameters were based on the mean amplitude of the hippocampal recordings, ictal spike width, and time between spikes. For all animals, a seizure was defined as at least four spikes of greater than twice the baseline amplitude within each 2 s bin. Interictal periods were set to a minimum of 1 s. The minimum seizure duration was originally set at 3 s. In separate analyses, to specifically examine “hippocampal paroxysmal discharges,” event criteria were set to a minimum frequency of 5 Hz for a minimum duration of 5 s (based on the criteria in a study by Twele et al., 2016b). Following automated analysis, 1 h of data were randomly selected for each animal and were manually scored to verify automated detection. Additionally, data from saline controls were analyzed; the results from saline controls indicate a false-positive rate of approximately one electrographic seizure-like event per 20 h of data. Visual inspection confirmed these to be false positives, which is in agreement with a recent report (Twele et al., 2017). All seizure analysis was performed blinded to experimental group.

Large behavioral seizures (LBSs) were defined as  $>3$  on the extended Racine scale of Pinel and Rovner (1978), as further modified by Krook-Magnuson et al. (2015). A scor-

ing of stage 1–3 involved a sudden change in behavioral state, head nodding, or forelimb clonus, respectively; stage 4 involved rearing, bucking, or clonus while on the stomach; stage 5 involved falling or clonus while on a side; stage 6 involved repeated sequences of rearing and falling, otherwise brief jumps; stage 7 involved violent jumping; and stage 8 involved violent jumping followed by a period of tonus lasting >5 s.

### Code accessibility

The automated electrographic seizure analysis software described in the article and accompanying user guide are freely available on-line at <https://github.com/KM-Lab/Electrographic-Seizure-Analyzer>. These items are also available as [Extended Data](#).

To flag events that were likely to include a behavioral manifestation (i.e., LBSs), a semiautomated approach was used. Raw LFP data were processed using a fast Fourier transform, bandpass filtered between 20 and 200 Hz, reverse fast Fourier transformed, passed through a Butterworth filter, and then smoothed; if the resulting output was greater than a threshold value customized for each subject, that section of data was manually reviewed for the verification of LBS occurrence and scoring of the LBS. This approach correctly flagged all LBSs in a testing dataset that had been previously manually identified, and on at least one occasion, flagged an LBS that escaped manual detection. The data were processed using the following Matlab (RRID:SCR\_001622) transformations (with “data” being an array of data and “fs” being the sampling frequency):

```
fdata = fft(data);

fdata(1:floor(20/fs))=0;

fdata(floor(200/fs):end)=0;

envelope_data = abs(ifft(fdata));

[c,d]=butter(2,.1/500,'low');

smooth_envelope_Data = filtfilt(c,d,envelope_data);
```

### Hyperactivity and anxiety

Several days after the end of vLFP monitoring, animals were subjected to behavioral testing. Animals first performed an open field (OF) and elevated plus maze (EPM) test (mean  $\pm$  SD: OF: dKA =  $54 \pm 29$  d postinjection; vKA =  $57 \pm 35$  d postinjection; saline =  $40 \pm 12$  d postinjection; EPM: dKA =  $59 \pm 31$  d postinjection; vKA =  $63 \pm 38$  d postinjection; saline =  $44 \pm 13$  d postinjection). The OF apparatus was a  $50 \times 50 \times 40$  cm (length  $\times$  width  $\times$  height) plastic box. Animals were allowed to roam freely for 15 min. ANY-maze software (Stoelting) was used to record and quantify movement. A 10 cm border around the edge of the apparatus delineated the center of the open field and was used to calculate thigmotaxis. The total distance traveled was also

analyzed. In the open field, one subject remained largely immobile throughout testing and was excluded from analysis.

The elevated plus maze (Med Associates) arm dimensions were  $34 \times 7$  cm, at a height of 90 cm. Two of the four arms of the maze were enclosed with tall walls, while the other two arms were open. Animals were placed in the center of the maze and allowed to explore for 5 min. Movement was tracked and analyzed using Ethovision software (Noldus). The time in closed arms and open arms was calculated, in addition to the total distance traveled. Three subjects that fell from the open arms of the elevated plus maze were excluded from analysis. Additionally, one subject was excluded due to improper apparatus setup and another for remaining largely immobile throughout testing.

For both open field and elevated plus maze, testing was performed in dim conditions,  $\sim 50$  lux at the center of the maze. On both tests, the arena was cleaned with 70% ethanol between subjects. Subjects were tested by experimenters blinded to experimental condition.

### Cognitive and affective characterization

Object location memory (OLM) and object recognition memory (ORM) testing occurred following OF and EPM testing (mean  $\pm$  SD: OLM: dKA =  $71 \pm 27$  d postinjection; vKA =  $81 \pm 27$  d postinjection; saline =  $66 \pm 17$  d postinjection; ORM: dKA =  $74 \pm 16$  d postinjection; vKA =  $77 \pm 29$  d postinjection; saline =  $63 \pm 14$  d postinjection). The order of the two tests was alternated between subjects, and there was 1 week between the end of one testing session and the beginning of habituation for the next memory test. The design of the tests was based on previously published protocols (Leger et al., 2013; Vogel Ciernia and Wood, 2014). Mice were handled for 5 d before beginning habituation, once a day for 90 s. After handling, mice were habituated to the OLM or ORM arena twice a day for 5 min at a time, for 3 consecutive days. The following day, two identical objects were introduced to the arena. Subjects were placed into the arena and allowed to explore for 10 min. The following day, two objects were again put into the arenas: for the OLM, object identity remained the same from the previous day, but the location of one object was moved. For the ORM, both objects were put in the same location as the previous day, while one object was changed to a novel object. Subjects were allowed to explore for 5 min. The OLM arena was a rectangular [ $43 \times 22 \times 20$  cm (length  $\times$  width  $\times$  height)] arena painted black, with a white stripe 4 cm in diameter at the center of a long side. The ORM arena was a circular (diameter, 30 cm; height, 26 cm) white arena with a 4 cm black stripe. A thin layer of bedding material covered the floor of the ORM arena. Training and testing sessions were recorded and manually analyzed off-line for bouts of object exploration. A discrimination index (DI) was calculated as follows: difference in time spent investigating novel and familiar objects divided by the sum of all object exploration time. Investigation was defined as the orientation of the subject's nose directly toward the object and within 1 cm of the edge of the object, exclusive of active

engagement in a different activity (e.g., digging). To ensure the consistency of scoring, analysis was performed by two experimenters blinded to the experimental condition. A pre-established exclusion criteria was set at  $<3$  s of total object exploration during the testing session or biased performance during the training session, defined as the absolute value of the DI (using an arbitrary novel object designation)  $>20$ . In total, 5 ORM subjects (1 dKA, 1 vKA, 2 saline) and 10 OLM subjects (4 dKA, 4 vKA, 2 saline) were excluded. After finishing the first memory test, subjects were housed in a custom cage for the sucrose consumption task (SCT; described below) before being returned to standard housing for the second memory test.

SCT testing occurred on average 69 d postinjection (mean  $\pm$  SD: dKA =  $74 \pm 23$  d postinjection; vKA =  $82 \pm 26$  d postinjection; saline =  $63 \pm 13$  d postinjection). Following a published protocol (Katz, 1982; Klein et al., 2015), animals had access to two identical water bottles in a custom cage. After habituating the animal to the cage and water bottles for 3 d, both water bottles were refilled: one with drinking water and the other with a 4% sucrose water solution. Approximately 24 h later, the bottles were both replaced with drinking water. This pattern was repeated for a total of 2 d with access only to drinking water, and 2 d with access to a sucrose solution. The side of the sucrose-containing bottle was counterbalanced across days. Before refilling, bottles were weighed to analyze consumption from the previous day. After refilling, bottles were weighed to set a baseline for the next day. Collection and analysis of SCT data were performed blinded to experimental condition.

### Tissue processing

To assess histopathology, hippocampi ipsilateral to kainate or saline injection were analyzed in coronal sections, comparing MFS and GCD near the dorsal site ( $\sim 1.8$  mm posterior to bregma) and near the ventral site ( $\sim 3.4$  mm posterior to bregma). For examination of MFS, Timm staining was performed using modifications of a published protocol (Sunnen et al., 2011). A subset of animals was killed by cervical dislocation (average  $\pm$  SD age postinjection: dKA,  $235 \pm 136$  d; vKA,  $212 \pm 150$  d; saline,  $63 \pm 2$  d) and transcardially perfused with  $\sim 30$  ml of 0.9% saline, 50 ml of 0.37% sodium sulfide, 20 ml of 0.9% saline, and 50 ml of 4% PFA. Brains were then postfixed for 48 h in 4% PFA. Brains were sectioned at 50  $\mu$ m and were processed for Timm staining. Timm stain consisted of an  $\sim 60\%$  arabic gum solution; a 10% 2 M, pH 4, citrate buffer; 30% 0.5 M hydroquinone; and  $<1\%$  of a 19% silver nitrate solution. Slices were mounted on a slide and dried for 3 h at room temperature, then submerged in the Timm stain for 45 min at room temperature. Slides were then rinsed with water and submerged in 5% sodium thiosulfate for 5 min. Slides were then dehydrated in a series of ethanol baths and mounted with DPX Mountant (Sigma-Aldrich). Light microscopy was used to capture images of the dentate gyrus. A region of interest was drawn around the granule and molecular layers, which were thresholded to capture blackened (Timm-stained)

tissue and were expressed as a fraction of the total area of the molecular and granule cell layers. Observations were taken from two hippocampal sections per animal (one anterior, one posterior).

Another series of brain slices was collected from a subset of animals and mounted on slides with DAPI (4',6'-diamidino-2-phenylindole dihydrochloride) mounting media (Vectashield; average age postinjection, 142 d; mean  $\pm$  SD: dKA =  $186 \pm 134$  d postinjection; vKA =  $148 \pm 136$  d postinjection; saline =  $100 \pm 55$  d postinjection). As with MFS, observations for GCD were taken from two hippocampal sections per animal (one anterior, one posterior). The width of the widest point of the central two-thirds of the enclosed blade of the dentate gyrus ipsilateral to injection was measured to assess GCD. The boundaries of the granule cell layer were defined to end when there was a  $>20$   $\mu$ m gap between nuclei. Image quantifications were performed using ImageJ (RRID: SCR\_002285). All tissue processing and analysis was performed blinded to experimental condition.

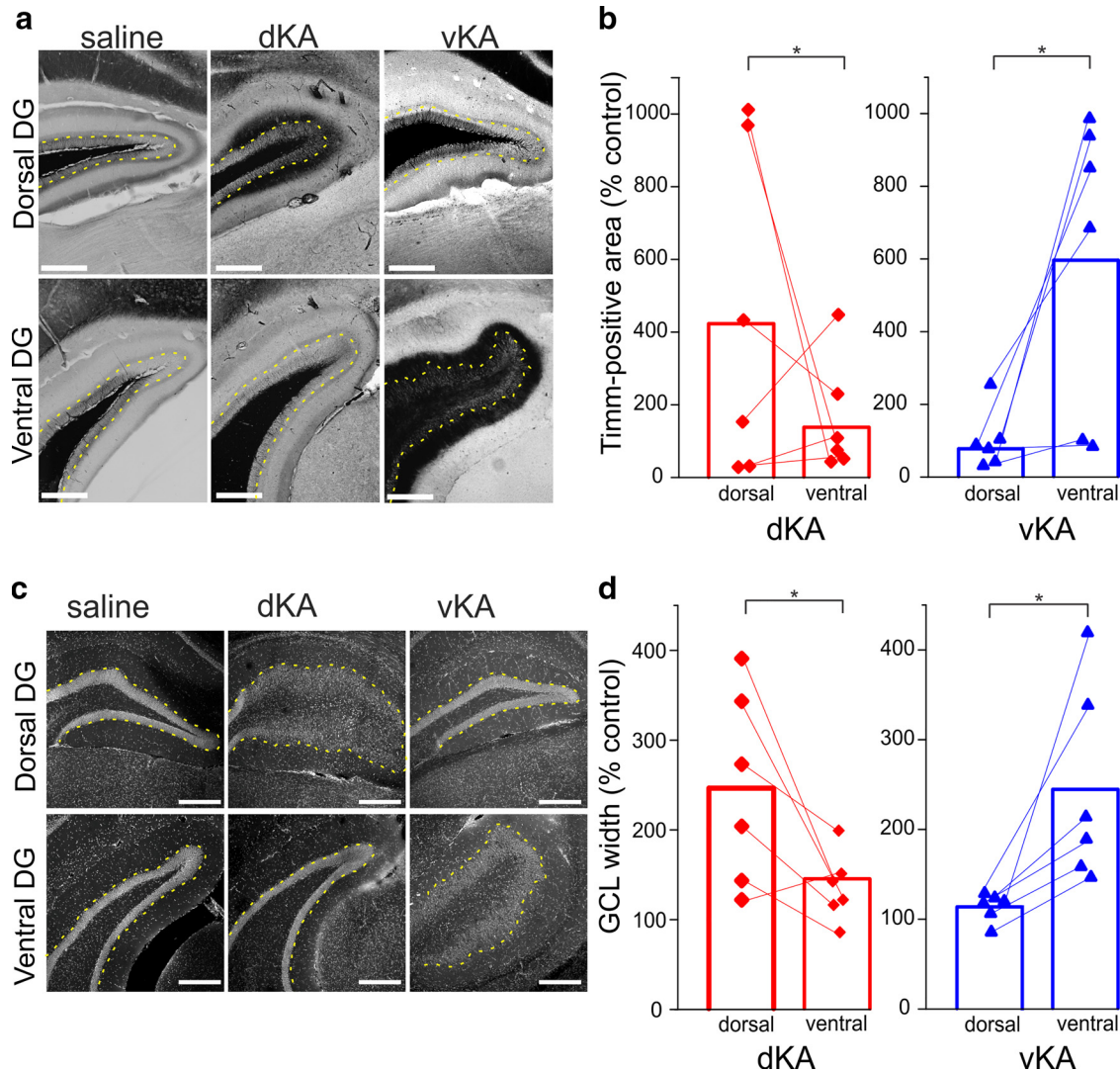
### Statistical analysis

Statistical analysis was conducted using OriginPro 2016. Where indicated, power analyses were performed using G\*Power 3.1 with observed means and SDs. Unless stated otherwise, values are reported as the mean  $\pm$  SEM. A  $p$  value of  $<0.05$  was considered significant. Though the experiments were not designed to test for sex differences, no significant differences were observed between male and female subjects.

## Results

### Examination of anatomic pathologies

Epilepsy can present with histologic, electrophysiological, cognitive, and affective pathologies. We therefore sought to characterize the vKA model, in which kainic acid is injected into the ventral hippocampus, in addition to the standard dKA model, in which kainic acid is injected into the dorsal hippocampus, along these various phenotypes. In both human patients and animal models of temporal lobe epilepsy, including the dKA model, anatomic signs of epileptic pathology in the tissue of the temporal lobe are often present. In addition to hippocampal sclerosis (Bouchet and Cazauviel, 1825; Andersson et al., 1991; Suzuki et al., 1995; Bouilleret et al., 1999; Arabadzisz et al., 2005), aberrant sprouting of mossy fibers (i.e., MFS; Fig. 1a) as well as dispersal of the dentate gyrus granule cell layer (i.e., GCD; Fig. 1c) are classical histopathologies (Scheibel et al., 1974; Houser, 1990). To determine whether and where MFS and GCD manifest in the vKA model, we analyzed postmortem tissue. For GCD, we analyzed the width of the granule cell layer. For MFS, we analyzed the amount of Timm-stained tissue in the granule and molecular layer of the dentate gyrus. Both groups exhibited differences in MFS between the respective site of kainate injection compared with the corresponding uninjected site, supporting the distinction between the two sites of KA injection. For the dKA group, MFS was greater in the dorsal compared with the ventral hippocampus (Wilcoxon signed rank test:  $n = 6$  animals,  $p = 0.036$ ;



**Figure 1.** Similar anatomic pathologies maximally present near site of KA injection. **a**, Timm-stained images of the dentate gyrus (DG) of saline, dKA, and vKA animals near the area of dorsal and ventral targeting. Yellow dotted lines indicate the boundary of the granule cell layer and inner molecular layer. Scale bar, 300  $\mu$ m. **b**, Comparison of Timm-positive granule cell and molecular layer area, normalized to saline controls, between dorsal and ventral hippocampal locations for dKA and vKA groups (dKA,  $n = 6$  animals; vKA,  $n = 6$  animals). **c**, DAPI-stained images of dentate gyri from saline, dKA, and vKA animals. Yellow dotted lines indicate the boundary of the granule cell layer and inner molecular layer. Scale bar, 300  $\mu$ m. **d**, Comparison of granule cell layer width, normalized to saline controls, at dorsal and ventral locations for dKA and vKA animals (dKA,  $n = 6$  animals; vKA,  $n = 6$  animals). \* $p < 0.05$ . Dorsal location,  $\sim 1.8$  mm past bregma; ventral location,  $\sim 3.4$  mm posterior to bregma. Red bar and data points reflect dKA data; blue bar and data points reflect vKA data.

mean at dorsal site saline control,  $422 \pm 172\%$ ; mean at ventral site saline control,  $137 \pm 60\%$ ). For the vKA group, the reverse was true: MFS was greater at the ventral site compared with the dorsal site (Fig. 1b; Wilcoxon signed rank test:  $n = 6$  animals,  $p = 0.036$ ; mean at dorsal site saline control,  $77 \pm 31\%$ ; mean at ventral site saline control,  $596 \pm 156\%$ ). Results from examining GCD followed a similar pattern (Fig. 1d). In the dKA group, GCD was greater in the dorsal aspect of the hippocampus compared with the ventral aspect (Wilcoxon signed rank test:  $n = 6$  animals,  $p = 0.036$ ; dorsal site mean saline control,  $246 \pm 41\%$ ; ventral site mean saline control,  $144 \pm 14\%$ ). Likewise, for the vKA group, the GCD was greater in the ventral compared with dorsal hippocampus

(Wilcoxon signed rank:  $n = 6$  animals,  $p = 0.036$ ; mean at dorsal site saline control,  $113 \pm 5\%$ ; mean at ventral site saline control,  $244 \pm 41\%$ ). These data indicate that vKA and dKA models both produce anatomic pathologies but that the models exhibit different pathologic focal points corresponding to their respective site of kainate injection. These histopathological results support the distinction of the two sites of KA administration.

### Electrographic seizures

Given the differing sites of maximal anatomic pathology, we investigated whether the dKA and vKA insults generate different seizure phenotypes. At least 2 weeks after KA or saline injection, animals were placed under

chronic video-synchronized LFP monitoring. Hippocampal activity was recorded via a twisted wire electrode placed approximately equidistant between the two sites of KA injection. This setup continuously recorded video and hippocampal LFP data for 2 weeks. The data were analyzed off-line by a combination of blinded manual and semiautomated analyses. In total, 7943 h of data were analyzed for electrographic seizures.

Examination of electrographic seizures revealed similar frequencies in both the dKA and vKA groups when a seizure was defined to have a minimum 3 s duration (Fig. 2b; Mann–Whitney test,  $p = 0.78$ ; dKA:  $n = 12$  animals; mean,  $20 \pm 7$  events/h; vKA:  $n = 11$  animals; mean,  $21 \pm 5$  events/h). To ensure that the lack of difference was not due to insufficient power, a power analysis was performed, which indicated that  $>300$  subjects (150 dKA and 150 vKA) would be needed to demonstrate a statistically significant result.

Comparing the rates of seizures with varying minimum durations between dKA and vKA groups further failed to reveal any differences (uncorrected Mann–Whitney  $p$  values  $> 0.17$  for all examined minimum seizure duration definitions; Fig. 2c). This finding indicates a similar seizure burden between the two groups, regardless of the minimum duration chosen.

Further analysis of the data to specifically examine the occurrence of hippocampal paroxysmal discharge-like events (requiring a minimum spike frequency of 5 Hz and a minimum duration of 5 s; based on the study by Twele et al., 2016b) again failed to reveal significant differences between dorsal and ventral groups (Mann–Whitney ANOVA,  $p = 0.35$ ; dKA:  $n = 12$  animals; mean,  $4.4 \pm 2$  events/h; vKA:  $n = 11$  animals; mean,  $7.3 \pm 2$  events/h).

An additional analysis was performed examining seizures not at the subject level but at the seizure level. Examination of electrographic seizure durations described only a small (0.6 s) difference between dKA and vKA seizures (Kolmogorov–Smirnov test,  $p < 0.001$ ; dKA:  $n = 37,320$  seizures; median duration, 7.9 s; vKA:  $n = 49,272$  seizures; median duration, 7.3 s).

To test whether a more substantial difference between groups would be apparent at a later time point, a subset of mice were rerecorded months later. Not all animals survived to this later time point, but mortality levels were similar between dKA and vKA groups (Fisher's exact test,  $p > 0.9$ ; dKA: mortality, 4 of 17 animals; vKA mortality, 5 of 17 animals). Examination of electrographic seizure durations at this later time point again suggested only a small (0.6 s) difference between dKA and vKA seizures (Kolmogorov–Smirnov test,  $p < 0.001$ ; dKA:  $n = 16,875$  seizures; median duration, 4.9 s; vKA:  $n = 15,601$  seizures; median duration, 5.5 s; Fig. 2c, inset), indicating that a lack of substantial difference was not due to the time point examined.

These data indicate that overall seizure burden is remarkably similar between dKA and vKA models at both an earlier and a later time point, suggesting that targeting the dorsal and ventral hippocampus for initial epileptogenic insults results in approximately equal ictogenicity in chronic epilepsy.

## Large behavioral seizures

In contrast to the high frequency of electrographic seizures, ictal events with a large behavioral component (i.e., LBS) occurred much less frequently. Analysis indicated similar LBS burdens between dKA and vKA animals, with no significant differences in frequency (Mann–Whitney test,  $p = 0.78$ ; dKA:  $n = 17$  animals; mean LBSs/d,  $0.35 \pm 0.08$ ; vKA:  $n = 17$  animals; mean LBSs/d,  $0.59 \pm 0.2$ ), duration ( $p = 0.36$ ; mean  $\pm$  SD: dKA,  $44 \pm 5$  s; vKA,  $49 \pm 4$  s), or median seizure severity ( $p = 0.75$ ; dKA, 5.25; vKA, 5; Fig. 2d–f). To again ensure that the lack of difference was not due to insufficient power, an additional power analysis was performed, which suggested that almost 400 subjects (200 dKA and 200 vKA) would be needed to demonstrate a statistically significant result.

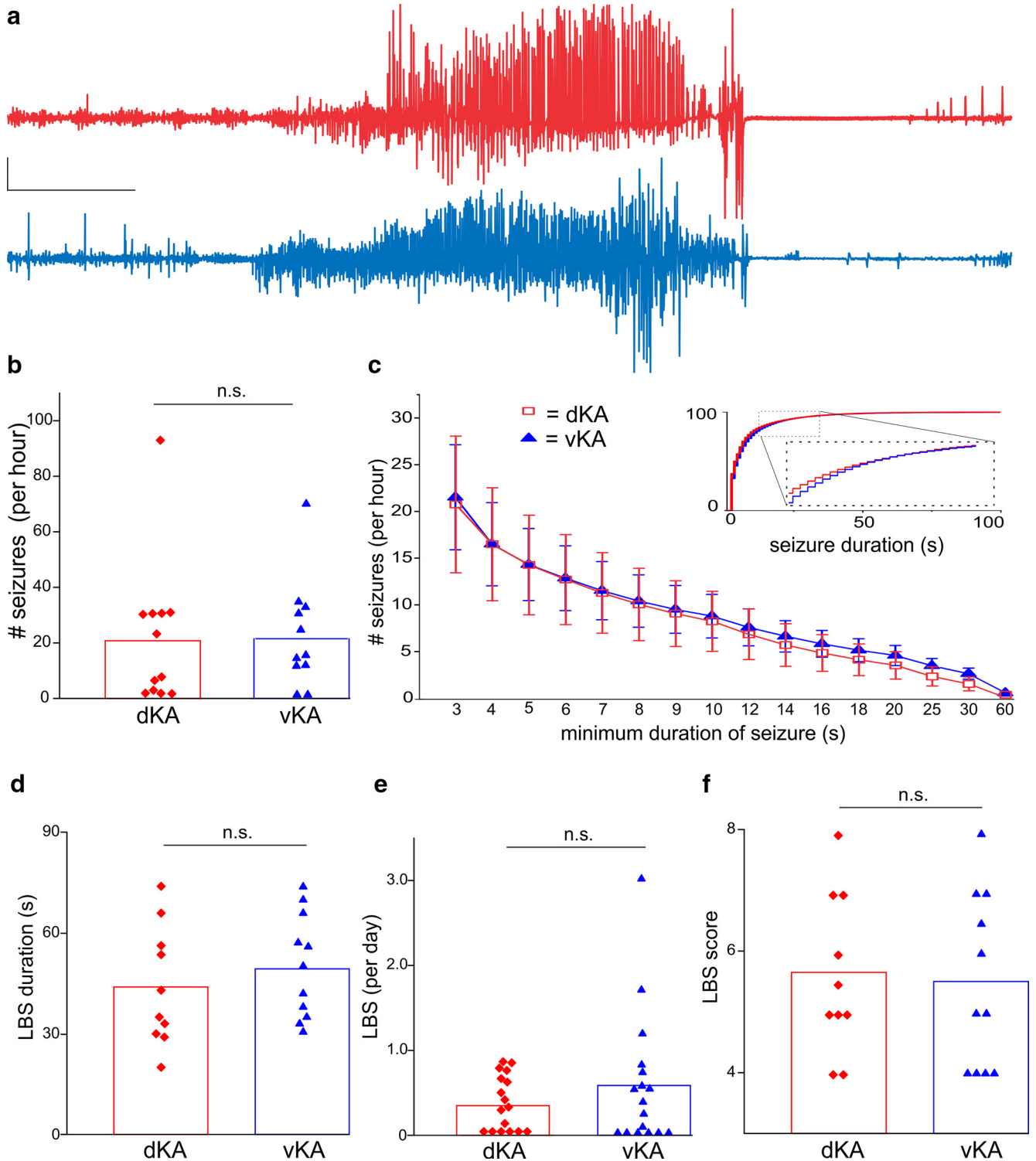
An additional analysis was performed examining seizure duration and severity not at the subject level but at the seizure level. While there was a small (0.2 s) difference in LBS duration (Mann–Whitney test,  $p = 0.0252$ ; dKA:  $n = 80$  LBSs; mean,  $49.4 \pm 3.3$  s; vKA:  $n = 126$  LBSs; mean,  $49.2 \pm 1.4$  s), seizure severity remained similar (Mann–Whitney test,  $p = 0.13$ ; dKA:  $n = 80$  LBSs; median, 5; vKA:  $n = 126$  LBSs; median, 5). Therefore, for both electrographic and large behavioral seizures, no substantial differences in seizure burden were found between dKA and vKA models.

## Cognitive and affective characterization

Despite having similar seizure rates, we wondered whether the dKA and vKA models would present distinct cognitive or affective phenotypes. Given that seizure burdens were similar between the dKA and vKA groups, any differences in behavior or affect would be more directly related to the site of KA injection, instead of secondary to effects of differences in seizure burden. We challenged the mice with tests of spatial and nonspatial memory (OLM and ORM, respectively), as well as tests of hyperactivity, anxiety (OF, EPM), and anhedonia (SCT).

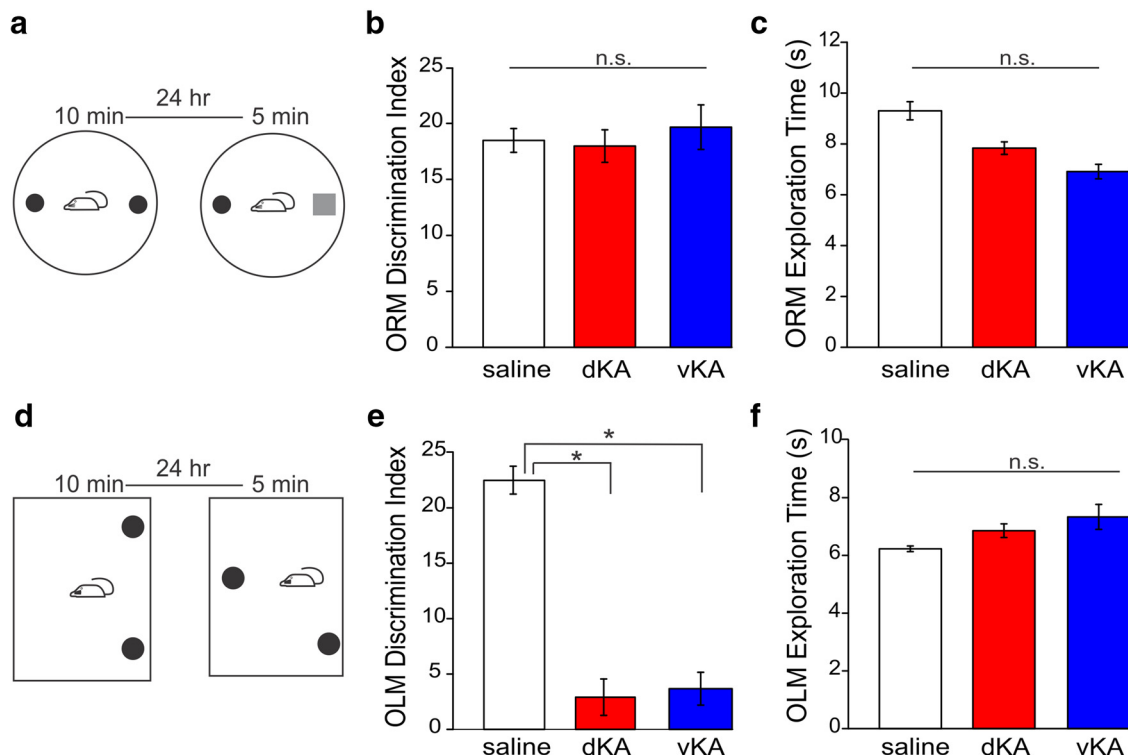
The OLM test is known to be sensitive to hippocampal dysfunction, while the ORM test shows less sensitivity to hippocampal damage (Mumby et al., 2002; Winters et al., 2004; Winters and Bussey, 2005; Balderas et al., 2008; Haettig et al., 2011). On the ORM, a nonspatial memory test, all groups exhibited similar abilities to discriminate a novel object (Kruskal–Wallis ANOVA,  $p = 0.74$ ; saline:  $n = 13$  animals; mean DI,  $19.3 \pm 1.2$ ; dKA:  $n = 12$  animals; mean DI,  $18 \pm 1.5$ ; vKA:  $n = 11$  animals; mean DI,  $19.7 \pm 2$ ; Fig. 3b). These results indicate that object–identity memory is uncompromised in our dKA and vKA groups.

Previous reports have observed deficits for dKA animals on the OLM test (Bui et al., 2018). We investigated whether the vKA group exhibits similar spatial memory deficits on the OLM task. Both the dKA and vKA groups demonstrated poor spatial novelty discrimination relative to saline-treated controls (Kruskal–Wallis ANOVA,  $p = 0.011$ ; saline:  $n = 13$  animals; mean DI,  $22.5 \pm 1.2$ ; dKA:  $n = 8$  animals; mean DI,  $2.9 \pm 1.6$ ; vKA:  $n = 10$  animals; mean DI,  $3.6 \pm 1.5$ ; Mann–Whitney test: dKA vs saline,  $p = 0.012$ ; vKA vs saline,  $p = 0.014$ ; dKA vs vKA,  $p = 0.96$ ; Fig. 3e). These effects cannot be explained by dif-



**Figure 2.** dKA and vKA groups exhibit similar electrographic and LBS burdens. **a**, Recordings from dKA (top) and vKA (bottom) animals during an LBS. Calibration: 200  $\mu$ V, 10 s. Large-amplitude signals are truncated. **b**, Quantification of electrographic seizure frequency for seizure events with a minimum duration of 3 s. **c**, Distribution of the frequency of electrographic seizure by duration. Inset, Cumulative distribution of electrographic seizures rerecorded from a subset of mice at a later time point. Note the similar distributions of seizure durations between dKA and vKA also at this later time point. **d**, Comparison of the average duration of LBS events. **e**, Frequency of LBSs. **f**, Comparison of median LBS scores. Red quadrilaterals reflect individual dKA data points; blue triangles reflect vKA individual data points. Error bars in **c** indicate SEM. n.s., Nonsignificant.





**Figure 3.** Spatial but not object identity memory deficits are present in both dKA and vKA models. **a**, Schematic of the training and testing portion of the ORM test. **b**, Comparison of novel object discrimination ability between saline, dKA, and vKA groups (saline,  $n = 13$  animals; dKA,  $n = 12$  animals; vKA,  $n = 11$  animals). **c**, Combined object exploration time on the ORM test. **d**, Schematic of the training and testing portion of the OLM test. **e**, Comparison of novel location discrimination ability among the saline, dKA, and vKA groups (saline,  $n = 13$  animals; dKA,  $n = 8$  animals; vKA,  $n = 10$  animals). **f**, Combined object exploration time on the OLM test. \* $p < 0.05$ . n.s., Nonsignificant difference. Open bars indicates saline data; red bars reflect dKA data; blue bars reflect vKA data. Error bars indicate SEM.

ferences in motor or motivational domains for several reasons. First, subjects were capable of discrimination on the ORM, revealing that they were competent to investigate novelty. Furthermore, dKA, vKA, and saline groups spent similar amounts of combined time investigating novel and familiar objects, indicating similar object engagement (Fig. 3c,f; OLM: Kruskal–Wallis ANOVA,  $p = 0.79$ ; ORM: Kruskal–Wallis ANOVA,  $p = 0.48$ ). These data therefore reveal that dKA and vKA mice possess similar memory deficits that are sensitive to spatial memory function without impairments of more generalized, object identity memory.

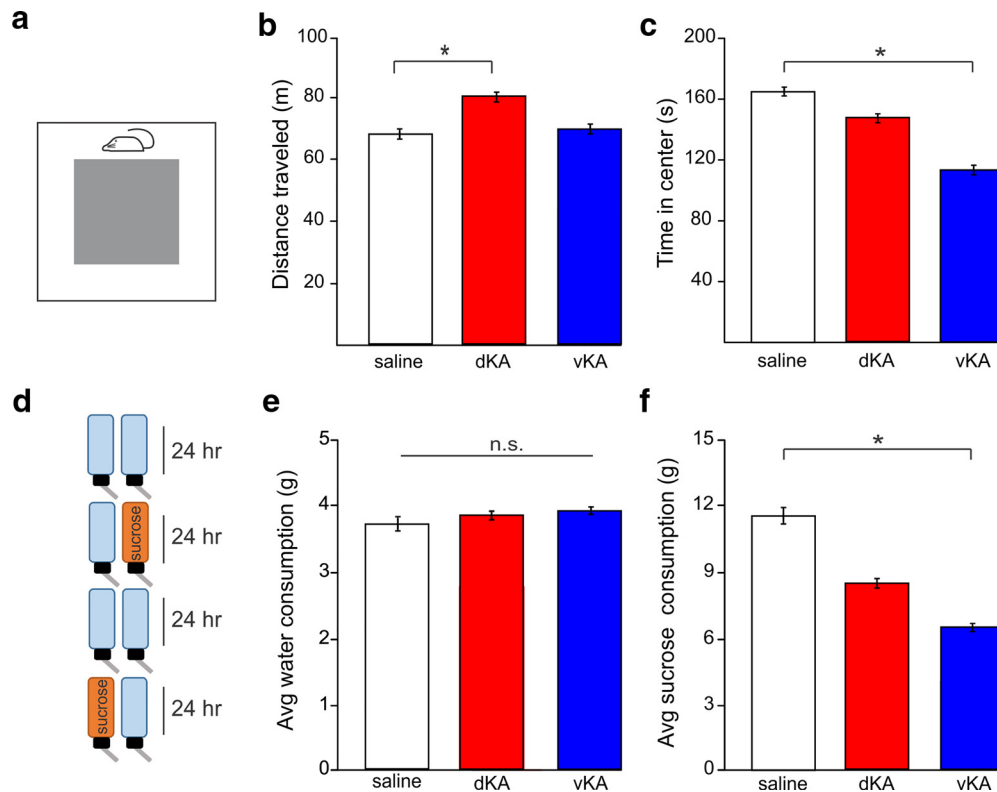
In addition to spatial memory deficits, we asked whether either the dKA or vKA groups exhibit affective phenotypes. Two tests were used to examine hyperactivity and anxiety: the OF and EPM. In the open field, the dKA group traveled a greater distance than the saline group. In contrast, however, the vKA group did not exhibit this phenotype (Kruskal–Wallis ANOVA,  $p = 0.041$ ; saline:  $n = 15$  animals; mean distance,  $66.4 \pm 0.7$  m; dKA:  $n = 13$  animals; mean distance,  $80.8 \pm 1.2$  m; vKA:  $n = 14$  animals; mean distance,  $69.7 \pm 0.9$  m; Mann–Whitney ANOVA: dKA vs saline,  $p = 0.017$ ; Mann–Whitney test: vKA vs saline,  $p = 0.42$ ; Fig. 4a and 4b).

When examining the time in the center of the open field (as a measure of anxiety), there was a strong trend in overall difference between groups (Kruskal–Wallis

ANOVA:  $p = 0.062$ ; saline: mean duration,  $164.3 \pm 2.8$  s; dKA: mean duration,  $151.9 \pm 2.9$  s; vKA: mean duration,  $114 \pm 4.4$  s) and individual comparisons exposed a significant difference between the vKA and saline groups (Mann–Whitney test,  $p = 0.024$ ) but not between the dKA and saline groups (Mann–Whitney test,  $p = 0.58$ ; Fig. 4c).

Repeated testing of these phenotypes in a different experimental paradigm, the elevated plus maze, suggested a similar increase in dKA distance traveled (supporting a hyperactive phenotype in the dKA model), while vKA animals trended toward this (Kruskal–Wallis ANOVA,  $p = 0.043$ ; saline:  $n = 14$  animals; mean distance,  $21.6 \pm 0.3$  m; dKA:  $n = 11$  animals; mean distance,  $25.5 \pm 0.5$  m; vKA:  $n = 10$  animals; mean distance,  $26.2 \pm 0.8$  m; Mann–Whitney test: dKA vs saline,  $p = 0.018$ ; Mann–Whitney test: vKA vs saline,  $p = 0.1$ ). However, data from the elevated plus maze did not show any between-group difference in time spent in open arms of the maze—another measure of anxiety (Kruskal–Wallis ANOVA:  $p = 0.84$ ; saline: mean duration,  $107 \pm 14$  s; dKA: mean duration,  $115 \pm 18$  s; vKA: mean duration,  $103 \pm 23$  s). Together, these data from the open field and elevated plus maze experiments indicate a hyperactive phenotype present in the dKA animals while suggesting a possible anxiety phenotype in the vKA animals.

In another series of experiments, a different affective pathology was assessed: anhedonia. Anhedonia is a key



**Figure 4.** Hyperactive, anxiety, and anhedonic phenotypes are differentially present in dKA and vKA models. **a**, Schematic of the open field test. **b**, Comparison of distance traveled during the open field test, a measure of hyperactivity (saline,  $n = 15$  animals; dKA,  $n = 13$  animals; vKA,  $n = 14$  animals). **c**, Time spent in the center of the open field arena, a negative indicator of anxiety. **d**, Schematic of SCT. **e**, Comparison of average amount of water consumed on days with exposure to only water (saline,  $n = 16$  animals; dKA,  $n = 12$  animals; vKA,  $n = 13$  animals). **f**, Comparison of average amount of sucrose water consumed when sucrose water was available, a test of anhedonia. \* $p < 0.05$ . n.s., Nonsignificant difference. Open bars indicates saline data; red bars reflect dKA data; blue bars reflect vKA data. Error bars indicate SEM.

symptom of clinical depression, which is highly comorbid in individuals with TLE (Scott et al., 2017) and impairs quality of life (Johnson et al., 2004). We used the SCT to determine whether either the dKA or vKA group freely participated in a pleasurable activity (consuming sucrose water) at comparable levels to those of saline controls. When only standard water was available, there was no difference in water consumption among groups, indicating a similar propensity and ability to engage in drinking behavior (Kruskal–Wallis ANOVA,  $p = 0.99$ ; saline:  $n = 16$  animals; mean,  $3.8 \pm 0.1 \times g$ ; dKA:  $n = 12$  animals; mean,  $3.9 \pm 0.1 \times g$ ; vKA:  $n = 13$  animals; mean,  $3.9 \pm 0.1 \times g$ ; Fig. 4e). Examination of sucrose water consumption revealed a group difference (Kruskal–Wallis ANOVA,  $p = 0.022$ ; saline: mean,  $11.5 \pm 0.7 \times g$ ; dKA: mean,  $8.7 \pm 0.4 \times g$ ; vKA: mean,  $6.6 \pm 0.3 \times g$ ) in which vKA animals drank less sucrose water than saline animals (Mann–Whitney,  $p = 0.003$ ). The dKA group appeared to show a more intermediate phenotype; analysis of consumed sucrose water trended toward reduced consumption (Mann–Whitney test: dKA vs saline,  $p = 0.086$ ; Fig. 4f). These data highlight the potential for the vKA model of TLE to emphasize specific affective comorbidities of TLE, as the difference in sucrose water consumption suggests a pronounced anhedonic phenotype in the vKA group.

## Discussion

The vKA model successfully captures key elements of TLE pathology that make the standard dKA model successful. Specifically, our data demonstrate that the vKA model exhibits classical anatomic pathologies, generates spontaneous electrographic and behavioral seizure burdens similar to those of the dKA model, and presents hippocampal-specific cognitive deficits. Importantly, the vKA model additionally displays a pronounced affective phenotype that includes anhedonia. These results indicate that the vKA model of TLE may be better suited for studying affective comorbidities of human TLE than the standard dKA model.

Where the dKA and vKA groups differ the most is in their affective and hyperactivity phenotypes. Specifically, the vKA group exhibited a strong anhedonic phenotype in addition to a potential anxiety phenotype, whereas the dKA group only exhibited significant hyperactivity. A recent meta-analysis estimated the prevalence of depressive disorders in people with epilepsy to be 23% (Scott et al., 2017), making it the most frequently comorbid psychiatric disorder in epilepsy (Kanner, 2003). Depression is known to have a major negative effect on quality-of-life measures in people with TLE (Johnson et al., 2004) and is repeatedly reported to be a more powerful predic-

tor of quality-of-life scores than seizure frequency (Perrine et al., 1995; Gilliam et al., 1997; Boylan et al., 2004). The prevalence and impact of this comorbidity highlights its importance in patients with TLE and underscores the necessity to recreate depressive phenotypes in animal models. Our data indicate that the vKA model is better suited for the study of anhedonia than the standard dKA model, which only trended toward reduced sucrose consumption. It is worth noting that a previous report found significant anhedonia in the dKA model (Klein et al., 2015), suggesting that the dorsal model can show some degree of anhedonia. However, our data show that ventral hippocampal KA administration strongly elicits anhedonia. While depressive-like behavior has been reported in various TLE models (Mazarati et al., 2008, 2009, 2010; Tchekalarova et al., 2011; Vrinda et al., 2017), it has not been universally observed. In fact, multiple reports indicate a decrease in measures of depressive-like behavior in various TLE models (Wintink et al., 2003; Adamec et al., 2004; Dos Santos et al., 2005; Inostroza et al., 2012; Lopes et al., 2016). The mechanisms underlying these disparate findings require further investigation to be fully understood, but suggest that lesion location, rather than the presence of seizures per se, may play a role in affective comorbidities. Our findings highlight the potential usefulness of the vKA model to study comorbid depression, which remains a substantial burden to the human TLE population.

Similar to depression, anxiety is also highly comorbid and detrimental to people with TLE, with an estimated prevalence of 20% (Scott et al., 2017) and a significant negative impact on quality-of-life scores (Johnson et al., 2004). The relationship between the ventral hippocampus and depression as well as anxiety is well documented outside the epilepsy field. Ventral hippocampal afferents to the nucleus accumbens have been shown to regulate susceptibility to depression using a chronic social defeat paradigm (Bagot et al., 2015). Furthermore, ventral hippocampal efferents were found to be critical for the antidepressant effect of ketamine (Carreno et al., 2016). Additionally, lesion studies have demonstrated that the ventral, but not dorsal, hippocampus is required for normal anxiety behaviors (Bannerman et al., 2004), and *in vivo* electrophysiological studies have demonstrated that coordination between the prefrontal cortex and ventral, but not dorsal, hippocampus is synchronized during anxiety (Adhikari et al., 2010). The disruption of normal ventral hippocampal networks following KA administration could impact these networks, mediating affective behavior, thereby generating anhedonic and possible anxiety phenotypes.

Our data present some evidence for a potential anxiety phenotype in the vKA model, as there was a significant reduction in the time spent in the center of an open field test. However, no difference was seen on the open arms of the elevated plus maze, another classic test for anxiety. This suggests either a task-specific anxiety or only a mild anxiety phenotype in the vKA animals. Similarly, an effect in the open field but a lack of an effect in the elevated plus maze has been previously observed in the pilocarpine

model of TLE (Gröticke et al., 2007). Notably, no strong evidence for an anxiety phenotype was seen for dKA animals in the present study.

Similar to reports on depressive-like behavior, the literature on anxiety in animal models of TLE is highly mixed. Across different rodent species, different timepoints, and different TLE models (e.g., dKA, intraperitoneal pilocarpine, intraperitoneal KA, amygdalar kindling, amygdalar KA), some studies report increased anxiety-like behavior (Wintink et al., 2003; Mohajeri et al., 2004; Müller et al., 2009; Liu et al., 2013; Lopes et al., 2016; Otsuka et al., 2016), while others report decreased anxiety-like behavior (Adamec et al., 2004; Detour et al., 2005; Dos Santos et al., 2005; Inostroza et al., 2011, 2012; Vrinda et al., 2017). Differences in methods and models, as well as potentially in strains and species, undoubtedly play a role in the controversy (Klee et al., 2017; Löscher et al., 2017). As with depression, the expression of anxiety comorbidities may be strongly influenced by lesion location, especially as it relates to amygdalar circuits (Inostroza et al., 2011, 2012). The amygdala itself is a target for focal induction of TLE, including by administration of KA (Ben-Ari et al., 1979, 1980; Hasegawa et al., 2002; Mouri et al., 2008; Liu et al., 2013). Anxiety-like behavior in intra-amygdala KA-injected mice has been observed and was ameliorated by post-status epilepticus intervention (Liu et al., 2013), suggesting the observed anxiety phenotype was sensitive to ongoing epileptic processes. However, other reports using systemic chemovulsants in rats noted anxiolytic—rather than anxiogenic—effects occurring alongside amygdalar damage (Inostroza et al., 2012). A comprehensive explanation of the differences in anxiety phenotypes currently evades the field, and additional research is needed to fully understand the underlying mechanisms of anxiety in models of epilepsy.

Tissue from human patients with TLE often displays both GCD and MFS (Scheibel et al., 1974; Houser, 1990). In the dKA and vKA models, we observe the presence of these pathologies and additionally identify the maximal site of pathology to be near the site of KA injection in each model. These data support the distinction of the dKA and vKA models and suggest that the functional effects of these pathologies would be mostly localized to either the dorsal or ventral hippocampus, respectively. This would then have differential effects on hippocampal function and behavior. However, the overall network contribution of MFS and GCD is not fully understood. Some evidence suggests that MFS may be excitatory and facilitate seizures via recurrent granule cell excitation (Wuarin and Dudek, 1996; Lynch and Sutula, 2000; Feng et al., 2003; Scharfman et al., 2003). Other data suggest that MFS may provide inhibitory effects via synapses on inhibitory neurons or the release of inhibitory transmitters (Sloviter, 1992; Schwarzer and Sperk, 1995; Tu et al., 2005; Sloviter et al., 2006). To further complicate the issue, MFS has been reported both to be correlated with seizure frequency (Wenzel et al., 2000; Kharatishvili et al., 2006; Hester and Danzer, 2014) and to be dissociated from seizure frequency (Zhang et al., 2002; Williams et al., 2004; Buckmaster and Lew, 2011). In a similarly unre-

solved fashion, the role of GCD in the altered hippocampal network remains uncertain. Some evidence suggests decreased excitability of dispersed granule cells (Young et al., 2009), but the contribution of this effect to epileptic pathology and aberrant network processing requires additional investigation. Regardless of the precise effects that MFS and GCD have on the hippocampal network, our data suggest that those effects would be magnified at different parts of the hippocampus in the dKA and vKA models.

Given the differences in anatomic pathology, and the known differences between the dorsal and ventral aspects of healthy and epileptic hippocampi, we were surprised to observe no substantial differences between the dKA and vKA groups in their ictal phenotypes. Seizure frequency and duration, for both electrograph and LBS, were remarkably similar between groups, as was LBS severity. In contrast, several lines of evidence from the epilepsy field describe differences between dorsal and ventral portions of the hippocampus in terms of their ictogenicity. First, in an observational study of patients with TLE, the human anterior hippocampus (corresponding to the rodent ventral hippocampus) was found to be more ictogenic than the posterior hippocampus (corresponding to the rodent dorsal hippocampus; Engel et al., 1990). Second, *in vitro* work observed that the rodent ventral hippocampus generates more frequent spontaneous seizure-like bursting than the dorsal hippocampus (Bragdon et al., 1986). Furthermore, data from animal models suggest that a population of ventral, but not dorsal, hippocampal granule cells is necessary for wet-dog shakes following acute seizure induction (Grimes et al., 1990). In a similar vein, an early kindling study demonstrated that kindling of the ventral hippocampus more quickly produced generalized seizures than the dorsal hippocampus (though the ventral hippocampus also had a greater afterdischarge threshold; Racine et al., 1977). More recently, a study using optogenetics to induce seizures found that seizures generated in the dorsal hippocampus were less likely to generalize than seizures initiated in a more ventral (intermediate) region (Weitz et al., 2015). Together, these studies support an important distinction between dorsal and ventral hippocampal areas in both healthy function and ictal pathology.

The finding that the dKA and vKA models exhibit similar rates of both electrographic and large behavioral seizures in chronic epilepsy raises several interesting prospects. For one, differences in ictal frequency in acute studies may not generalize to chronic models of spontaneous seizures. Consider, for example, the increased current injections required for afterdischarges in kindling targeting the ventral hippocampus (Racine et al., 1977), which suggests an increased initial ictal threshold in the ventral hippocampus. Additionally, during the epileptogenic process, there is substantial reorganization of the hippocampal network, and this reorganization may disrupt the processes that underlie findings of differences in acute seizures between the dorsal and ventral hippocampus. Our results demonstrate that whatever differential changes enacted by MFS and GCD in their respective

hippocampal domains of the dKA and vKA models, they were either insufficient to generate a difference in ictal characteristics or were overwhelmed by other changes that overlapped between the two models.

With both dKA and vKA groups exhibiting similar ictal phenotypes, the potential confound of secondary effects of ictal burdens is removed. This is important when evaluating the dKA and vKA models on multiple pathologic dimensions, as seizure burden can influence cognitive and affective outcomes. For example, seizure frequency and severity are known to correlate with progressive cognitive deterioration in people with TLE (Helmstaedter et al., 2003). Additionally, postictal periods are associated with worsened psychiatric problems in human TLE patients (Kanner et al., 2004). The similarity of the ictal phenotypes of the dKA and vKA models allows us to more confidently compare their cognitive and affective pathologies as results from differences in hippocampal targeting instead of differences in seizure burden.

Both the dKA and vKA groups had a similar impairment on a test of hippocampal-dependent spatial memory, without showing impairments on a test of nonspatial memory. Though the dorsal hippocampus is generally associated with spatial navigation and memory, there are several possibilities that could account for the vKA group also showing spatial impairment. For one, following ventral KA injection, broad network changes may impair the ability of the dorsal hippocampus to mediate spatial memory. Alternatively, the ventral hippocampus is known to be involved with some aspects of spatial memory, and damage to these functions could cause the observed deficit. For example, in addition to the dorsal hippocampus, the ventral hippocampus also has place cells, although they generally govern a much larger place field than their dorsal counterparts (Kjelstrup et al., 2008). Additionally, lesion studies suggest that, although encoding of spatial memory requires only the dorsal hippocampus, retrieval of spatial memory may require some aspects of the ventral hippocampus (Moser and Moser, 1998). However, deficits in spatial memory in the dKA and vKA models may also be viewed less as a result of acute hippocampal KA lesion location and more as a consequence of recurrent seizures. Impairment in spatial memory-related processes, including acquisition, recall, and episodic-like memory, has been reported in chronic models of TLE using different systemic chemoconvulsants across multiple species (Gröticke et al., 2008; Chauvière et al., 2009; Inostroza et al., 2011, 2013; Suárez et al., 2012) as well as from acute seizure models (Lin et al., 2009). As seizures themselves may disrupt hippocampal function, it is important to remember that dKA and vKA groups displayed similar seizure burdens. Seizure burden alone, however, is not the sole predictor of cognitive impairment (Inostroza et al., 2011). Regardless of the role that the dorsal and ventral hippocampus play in spatial memory, the phenotype of impaired spatial memory is shared among both the dKA and vKA models, as well as other nonfocal models. Other pathologies, however, such as anhedonia or hyperactivity, seem more influenced by the exact means of epileptogenic induction.

The dKA model benefits from extensive prior characterization, such as the response to antiepileptic drugs (Klein et al., 2015; Duveau et al., 2016) and optogenetic (Krook-Magnuson et al., 2013, 2014, 2015; Bui et al., 2018) and electrical intervention (Bragin et al., 2002; Huang and van Luijtelaaar, 2013), characterization of pathological timecourse (Gruber et al., 1994; Bragin et al., 2005; Heinrich et al., 2006, 2011; Häussler et al., 2012; Li et al., 2018), changes in hippocampal activity and circuitry (Davenport et al., 1990; Mathern et al., 1993; Boullieret et al., 1999; Bragin et al., 1999; Riban et al., 2002; Lu et al., 2016; Christenson Wick et al., 2017; Sheybani et al., 2018), molecular mechanisms (Straessle et al., 2003; Young et al., 2009; Duveau and Fritschy, 2010; Schidlitzki et al., 2017), interactions with the hypothalamic–pituitary–gonadal axis (Li et al., 2016), and effects of strain and sex (Twele et al., 2016a). Future work can similarly further examine the vKA model in regard to these important issues.

Overall, the vKA model of TLE exhibits similar histopathological and ictal phenotypes compared with the standard dKA model, but displays additional affective phenotypes. This model provides a tool for epilepsy researchers to further examine important comorbidities of TLE, such as depression, while maintaining the benefits of a focal KA model.

## References

- Adamec R, Blundell J, Burton P (2004) Anxiolytic effects of kindling role of anatomical location of the kindling electrode in response to kindling of the right basolateral amygdala. *Brain Res* 1024:44–58. [CrossRef Medline](#)
- Adhikari A, Topiwala MA, Gordon JA (2010) Synchronized activity between the ventral hippocampus and the medial prefrontal cortex during anxiety. *Neuron* 65:257–269. [CrossRef Medline](#)
- Amaral DG, Witter MP (1989) The three-dimensional organization of the hippocampal formation: a review of anatomical data. *Neuroscience* 31:571–591. [Medline](#)
- Andersson PB, Perry VH, Gordon S (1991) The kinetics and morphological characteristics of the macrophage-microglial response to kainic acid-induced neuronal degeneration. *Neuroscience* 42:201–214. [Medline](#)
- Arabadzisz D, Antal K, Parpan F, Emri Z, Fritschy J-MM (2005) Epileptogenesis and chronic seizures in a mouse model of temporal lobe epilepsy are associated with distinct EEG patterns and selective neurochemical alterations in the contralateral hippocampus. *Exp Neurol* 194:76–90. [CrossRef](#)
- Armstrong C, Krook-Magnuson E, Oijala M, Soltesz I (2013) Closed-loop optogenetic intervention in mice. *Nat Protoc* 8:1475–1493. [CrossRef Medline](#)
- Bagot RC, Parise EM, Peña CJ, Zhang H-XX, Maze I, Chaudhury D, Persaud B, Cachope R, Bolaños-Guzmán CA, Cheer JF, Cheer J, Deisseroth K, Han M-HH, Nestler EJ (2015) Ventral hippocampal afferents to the nucleus accumbens regulate susceptibility to depression. *Nat Commun* 6:7062. [CrossRef](#)
- Balderas I, Rodriguez-Ortiz C, Salgado-Tonda P, Chavez-Hurtado J, McGaugh J, Bermudez-Rattoni F (2008) The consolidation of object and context recognition memory involve different regions of the temporal lobe. *Learn Mem* 15:618–624. [CrossRef Medline](#)
- Bannerman DM, Rawlins JN, McHugh SB, Deacon RM, Yee BK, Bast T, Zhang W-NN, Pothuizen HH, Feldon J (2004) Regional dissociations within the hippocampus–memory and anxiety. *Neurosci Biobehav Rev* 28:273–283. [CrossRef](#)
- Ben-Ari Y, Lagowska J, Tremblay E, Le Gal La Salle G (1979) A new model of focal status epilepticus: intra-amygdaloid application of kainic acid elicits repetitive secondarily generalized convulsive seizures. *Brain Res* 163:176–179. [Medline](#)
- Ben-Ari Y, Tremblay E, Ottersen OP (1980) Injections of kainic acid into the amygdaloid complex of the rat: an electrographic, clinical and histological study in relation to the pathology of epilepsy. *Neuroscience* 5:515–528. [Medline](#)
- Bouchet C, Cazauvieilh M (1825) De L'épilepsie considérée dans ses rapports avec l'aliénation mentale: recherche sur la nature et le siège de ces deux maladies. *Arch Gen Med* 9:510–542.
- Boullieret V, Ridoux V, Depaulis A, Marescaux C (1999) Recurrent seizures and hippocampal sclerosis following intrahippocampal kainate injection in adult mice: electroencephalography, histopathology and synaptic reorganization similar to mesial temporal lobe epilepsy. *Neuroscience* 89:717–729. [CrossRef](#)
- Boylan LS, Flint LA, Labovitz DL, Jackson SC, Starner K, Devinsky O (2004) Depression but not seizure frequency predicts quality of life in treatment-resistant epilepsy. *Neurology* 258–261. [CrossRef](#)
- Bragdon AC, Taylor DM, Wilson WA (1986) Potassium-induced epileptiform activity in area CA3 varies markedly along the septotemporal axis of the rat hippocampus. *Brain Res* 378:169–173. [Medline](#)
- Bragin A, Azizyan A, Almajano J, Wilson CL, Engel J (2005) Analysis of chronic seizure onsets after intrahippocampal kainic acid injection in freely moving rats. *Epilepsia* 46:1592–1598. [CrossRef Medline](#)
- Bragin A, Engel J, Wilson CL, Vizenin E, Mathern GW (1999) Electrophysiologic analysis of a chronic seizure model after unilateral hippocampal KA injection. *Epilepsia* 40:1210–1221. [Medline](#)
- Bragin A, Wilson CL, Engel J (2002) Rate of interictal events and spontaneous seizures in epileptic rats after electrical stimulation of hippocampus and its afferents. *Epilepsia* 43 [Suppl 5]:81–85. [Medline](#)
- Buckmaster PS, Lew FH (2011) Rapamycin suppresses mossy fiber sprouting but not seizure frequency in a mouse model of temporal lobe epilepsy. *J Neurosci* 31:2337–2347. [CrossRef Medline](#)
- Bui AD, Nguyen TM, Limouse C, Kim HK, Szabo GG, Felong S, Maroso M, Soltesz I (2018) Dentate gyrus mossy cells control spontaneous convulsive seizures and spatial memory. *Science* 359:787–790. [CrossRef Medline](#)
- Carreno FR, Donegan JJ, Boley AM, Shah A, DeGuzman M, Frazer A, Lodge DJ (2016) Activation of a ventral hippocampus–medial prefrontal cortex pathway is both necessary and sufficient for an antidepressant response to ketamine. *Mol Psychiatry* 21:1298–1308. [CrossRef Medline](#)
- Cavalheiro EA, Riche DA, Le Gal La Salle G (1982) Long-term effects of intrahippocampal kainic acid injection in rats: a method for inducing spontaneous recurrent seizures. *Electroencephalogr Clin Neurophysiol* 53:581–589. [Medline](#)
- Genquizza L, Swanson L (2007) Spatial organization of direct hippocampal field CA1 axonal projections to the rest of the cerebral cortex. *Brain Res Rev* 56:1–26. [CrossRef Medline](#)
- Chauvière L, Rafrafi N, Thinus-Blanc C, Bartolomei F, Esclapez M, Bernard C (2009) Early deficits in spatial memory and theta rhythm in experimental temporal lobe epilepsy. *J Neurosci* 29:5402–5410. [CrossRef Medline](#)
- Christenson Wick Z, Leintz CH, Xamonthiene C, Huang BH, Krook-Magnuson E (2017) Axonal sprouting in commissurally projecting parvalbumin-expressing interneurons. *J Neurosci Res* 95:2336–2344. [CrossRef Medline](#)
- Davenport CJ, Brown WJ, Babb TL (1990) Sprouting of GABAergic and mossy fiber axons in dentate gyrus following intrahippocampal kainate in the rat. *Exp Neurol* 109:180–190. [Medline](#)
- Detour J, Schroeder H, Desor D, Nehlig A (2005) A 5-month period of epilepsy impairs spatial memory, decreases anxiety, but spares object recognition in the lithium-pilocarpine model in adult rats. *Epilepsia* 46:499–508.
- Dos Santos JG, Longo BM, Blanco MM, Menezes de Oliveira MG, Mello LEE (2005) Behavioral changes resulting from the administration of cycloheximide in the pilocarpine model of epilepsy. *Brain Res* 1066:37–48. [CrossRef](#)

- Duveau V, Pouyatos B, Bressand K, Bouyssières C, Chabrol T, Roche Y, Depaulis A, Roucard C (2016) Differential Effects of Antiepileptic Drugs on Focal Seizures in the Intrahippocampal Kainate Mouse Model of Mesial Temporal Lobe Epilepsy. *CNS Neurosci Ther* 22:497–506. [Medline](#)
- Duveau V, Fritschy J-MM (2010) PSA-NCAM-dependent GDNF signaling limits neurodegeneration and epileptogenesis in temporal lobe epilepsy. *Eur J Neurosci* 32:89–98. [CrossRef Medline](#)
- Engel J, Henry TR, Risinger MW, Mazziotta JC, Sutherling WW, Levesque MF, Phelps ME (1990) Presurgical evaluation for partial epilepsy: relative contributions of chronic depth-electrode recordings versus FDG-PET and scalp-sphenoidal ictal EEG. *Neurology* 40:1670–1677. [Medline](#)
- Fanselow MS, Dong H-WW (2010) Are the dorsal and ventral hippocampus functionally distinct structures? *Neuron* 65:7–19. [CrossRef Medline](#)
- Feng L, Molnár P, Nadler JV (2003) Short-term frequency-dependent plasticity at recurrent mossy fiber synapses of the epileptic brain. *J Neurosci* 23:5381–5390. [CrossRef](#)
- Gilliam F, Kuzniecky R, Faught E, Black L, Carpenter G, Schrodt R (1997) Patient-validated content of epilepsy-specific quality-of-life measurement. *Epilepsia* 38:233–236. [Medline](#)
- Grimes L, Earnhardt T, Mitchell C, Tilson H, Hong J-S (1990) Granule cells in the ventral, but not dorsal, dentate gyrus are essential for kainic acid-induced wet dog shakes. *Brain Res* 167–170. [CrossRef](#)
- Gruber B, Greber S, Rupp E, Sperk G (1994) Differential NPY mRNA expression in granule cells and interneurons of the rat dentate gyrus after kainic acid injection. *Hippocampus* 4:474–482. [Cross-Ref Medline](#)
- Gröticke I, Hoffmann K, Löscher W (2007) Behavioral alterations in the pilocarpine model of temporal lobe epilepsy in mice. *Exp Neurol* 207:329–349. [CrossRef Medline](#)
- Gröticke I, Hoffmann K, Löscher W (2008) Behavioral alterations in a mouse model of temporal lobe epilepsy induced by intrahippocampal injection of kainate. *Exp Neurol* 213:71–83.
- Haettig J, Stefanko DP, Multani ML, Figueroa DX, McQuown SC, Wood MA (2011) HDAC inhibition modulates hippocampus-dependent long-term memory for object location in a CBP-dependent manner. *Learn Mem* 18:71–79. [CrossRef](#)
- Hasegawa D, Orima H, Fujita M, Hashizume K, Tanaka T (2002) Complex partial status epilepticus induced by a microinjection of kainic acid into unilateral amygdala in dogs and its brain damage. *Brain Res* 955:174–182. [Medline](#)
- Heinrich C, Nitta N, Flubacher A, Müller M, Fahrner A, Kirsch M, Freiman T, Suzuki F, Depaulis A, Frotscher M, Haas CA (2006) Reelin deficiency and displacement of mature neurons, but not neurogenesis, underlie the formation of granule cell dispersion in the epileptic hippocampus. *J Neurosci* 26:4701–4713. [CrossRef](#)
- Heinrich C, Lähtinen S, Suzuki F, Anne-Marie L, Huber S, Häussler U, Haas C, Larmet Y, Castren E, Depaulis A (2011) Increase in BDNF-mediated TrkB signaling promotes epileptogenesis in a mouse model of mesial temporal lobe epilepsy. *Neurobiol Dis* 42:35–47. [CrossRef](#)
- Helmstaedter C, Kurthen M, Lux S, Reuber M, Elger CE (2003) Chronic epilepsy and cognition: a longitudinal study in temporal lobe epilepsy. *Ann Neurol* 54:425–32. [CrossRef Medline](#)
- Hermann B, Seidenberg M, Bell B (2000) Psychiatric comorbidity in chronic epilepsy: identification, consequences, and treatment of major depression. *Epilepsia* 41:S31–S41. [CrossRef](#)
- Hester M, Danzer S (2014) Hippocampal granule cell pathology in epilepsy—a possible structural basis for comorbidities of epilepsy? *Epilepsy Behav* 38:105–116. [CrossRef Medline](#)
- Houser CR (1990) Granule cell dispersion in the dentate gyrus of humans with temporal lobe epilepsy. *Brain Res* 535:195–204. [Medline](#)
- Huang L, van Luijckelaar G (2013) The effects of responsive and scheduled subicular high frequency stimulation in the intra-hippocampal kainic acid seizure model. *Epilepsy Res* 106:326–337. [CrossRef Medline](#)
- Häussler U, Bielefeld L, Froriep UP, Wolfart J, Haas CA (2012) Septotemporal position in the hippocampal formation determines epileptic and neurogenic activity in temporal lobe epilepsy. *Cereb Cortex* 22:26–36. [CrossRef Medline](#)
- Inostroza M, Cid E, Brotons-Mas J, Gal B, Aivar P, Uzcatgeui YG, Sandi C, Menendez de la Prida L (2011) Hippocampal-dependent spatial memory in the water maze is preserved in an experimental model of temporal lobe epilepsy in rats. *PLoS One* 6:e22372. [CrossRef](#)
- Inostroza M, Cid E, Menendez de la Prida L, Sandi C (2012) Different emotional disturbances in two experimental models of temporal lobe epilepsy in rats. *PLoS One* 7:e38959. [CrossRef Medline](#)
- Inostroza M, Brotons-Mas JR, Laurent F, Cid E, de la Prida LM (2013) Specific impairment of “what-where-when” episodic-like memory in experimental models of temporal lobe epilepsy. *J Neurosci* 33:17749–17762. [CrossRef Medline](#)
- Johnson EK, Jones JE, Seidenberg M, Hermann BP (2004) The relative impact of anxiety, depression, and clinical seizure features on health-related quality of life in epilepsy. *Epilepsia* 45:544–550. [CrossRef Medline](#)
- Kanner AM (2003) Depression in epilepsy: prevalence, clinical semiology, pathogenic mechanisms, and treatment. *Biol Psychiatry* 54:388–398. [Medline](#)
- Kanner AM, Soto A, Gross-Kanner H (2004) Prevalence and clinical characteristics of postictal psychiatric symptoms in partial epilepsy. *Neurology* 62:708–713. [Medline](#)
- Katz RJ (1982) Animal model of depression: pharmacological sensitivity of a hedonic deficit. *Pharmacol Biochem Behav* 16:965–968. [Medline](#)
- Kharatishvili I, Nissinen JP, McIntosh TK, Pitkänen A (2006) A model of posttraumatic epilepsy induced by lateral fluid-percussion brain injury in rats. *Neuroscience* 140:685–697. [CrossRef Medline](#)
- Kjelstrup KB, Solstad T, Brun VH, Hafting T, Leutgeb S, Witter MP, Moser EI, Moser M-BB (2008) Finite scale of spatial representation in the hippocampus. *Science* 321:140–141. [CrossRef Medline](#)
- Klee R, Brandt C, Töllner K, Löscher W (2017) Various modifications of the intrahippocampal kainate model of mesial temporal lobe epilepsy in rats fail to resolve the marked rat-to-mouse differences in type and frequency of spontaneous seizures in this model. *Epilepsy Behav* 68:129–140. [CrossRef Medline](#)
- Klein S, Bankstahl JP, Löscher W, Bankstahl M (2015) Sucrose consumption test reveals pharmacoresistant depression-associated behavior in two mouse models of temporal lobe epilepsy. *Exp Neurol* 263:263–271. [CrossRef Medline](#)
- Krook-Magnuson E, Armstrong C, Oijala M, Soltesz I (2013) On-demand optogenetic control of spontaneous seizures in temporal lobe epilepsy. *Nat Commun* 4:1376. [CrossRef Medline](#)
- Krook-Magnuson E, Szabo GG, Armstrong C, Oijala M, Soltesz I (2014) Cerebellar directed optogenetic intervention inhibits spontaneous hippocampal seizures in a mouse model of temporal lobe epilepsy. *eNeuro* 1:ENEURO.0005-14.2014. [CrossRef](#)
- Krook-Magnuson E, Armstrong C, Bui A, Lew S, Oijala M, Soltesz I (2015) In vivo evaluation of the dentate gate theory in epilepsy. *J Physiol (Lond)* 593:2379–2388. [CrossRef Medline](#)
- Leger M, Quiedeville A, Bouet V, Haelewyn B, Boulouard M, Schumann-Bard P, Freret T (2013) Object recognition test in mice. *Nat Protoc* 8:2531–2537. [CrossRef Medline](#)
- Li J, Kim JS, Abejuela VA, Lamano JB, Klein NJ, Christian CA (2016) Disrupted female estrous cyclicity in the intrahippocampal kainic acid mouse model of temporal lobe epilepsy. *Epilepsia Open* 2:39–47. [CrossRef Medline](#)
- Li L, Kriukova K, Engel J, Bragin A (2018) Seizure development in the acute intrahippocampal epileptic focus. *Sci Rep* 8:1423. [CrossRef Medline](#)
- Lin H, Holmes G, Kubie J, Muller R (2009) Recurrent seizures induce a reversible impairment in a spatial hidden goal task. *Hippocampus* 19:817–827. [CrossRef Medline](#)
- Liu G, Gu B, He X-PP, Joshi RB, Wackerle HD, Rodriguiz RM, Wetsel WC, McNamara JO (2013) Transient inhibition of TrkB kinase after

- status epilepticus prevents development of temporal lobe epilepsy. *Neuron* 79:31–38. [CrossRef](#)
- Lopes MW, Lopes SC, Santos DBB, Costa AP, Gonçalves FM, de Mello N, Prediger RD, Farina M, Walz R, Leal RB (2016) Time course evaluation of behavioral impairments in the pilocarpine model of epilepsy. *Epilepsy Behav* 55:92–100. [CrossRef](#)
- Lu Y, Zhong C, Wang L, Wei P, He W, Huang K, Zhang Y, Zhan Y, Feng G, Wang L (2016) Optogenetic dissection of ictal propagation in the hippocampal-entorhinal cortex structures. *Nat Commun* 7:10962. [CrossRef](#) [Medline](#)
- Lynch M, Sutula T (2000) Recurrent excitatory connectivity in the dentate gyrus of kindled and kainic acid-treated rats. *J Neurophysiol* 83:693–704. [CrossRef](#) [Medline](#)
- Löscher W, Ferland RJ, Ferraro TN (2017) The relevance of inter- and intrasrain differences in mice and rats and their implications for models of seizures and epilepsy. *Epilepsy Behav* 73:214–235. [CrossRef](#) [Medline](#)
- Mathern GW, Cifuentes F, Leite JP, Pretorius JK, Babb TL (1993) Hippocampal EEG excitability and chronic spontaneous seizures are associated with aberrant synaptic reorganization in the rat intrahippocampal kainate model. *Electroencephalogr Clin Neurophysiol* 87:326–339. [Medline](#)
- Mazarati A, Siddarth P, Baldwin RA, Shin D, Caplan R, Sankar R (2008) Depression after status epilepticus: behavioural and biochemical deficits and effects of fluoxetine. *Brain* 131:2071–2083. [CrossRef](#) [Medline](#)
- Mazarati AM, Shin D, Kwon YS, Bragin A, Pineda E, Tio D, Taylor AN, Sankar R (2009) Elevated plasma corticosterone level and depressive behavior in experimental temporal lobe epilepsy. *Neurobiol Dis* 34:457–461. [CrossRef](#) [Medline](#)
- Mazarati AM, Pineda E, Shin D, Tio D, Taylor AN, Sankar R (2010) Comorbidity between epilepsy and depression: role of hippocampal interleukin-1. *Neurobiol Dis* 37:461–467. [CrossRef](#) [Medline](#)
- Mohajeri MH, Madani R, Saini K, Lipp H-PP, Nitsch RM, Wolfer DP (2004) The impact of genetic background on neurodegeneration and behavior in seized mice. *Genes Brain Behav* 3:228–239. [CrossRef](#) [Medline](#)
- Moser MB, Moser EI (1998) Distributed encoding and retrieval of spatial memory in the hippocampus. *J Neurosci* 18:7535–7542. [Medline](#)
- Mouri G, Jimenez-Mateos E, Engel T, Dunleavy M, Hatazaki S, Paucard A, Matsushima S, Taki W, Henshall DC (2008) Unilateral hippocampal CA3-predominant damage and short latency epileptogenesis after intra-amygdala microinjection of kainic acid in mice. *Brain Res* 1213:140–151. [CrossRef](#) [Medline](#)
- Mumby DG, Gaskin S, Glenn MJ, Schramek TE, Lehmann H (2002) Hippocampal damage and exploratory preferences in rats: memory for objects, places, and contexts. *Learn Mem* 9:49–57. [CrossRef](#) [Medline](#)
- Müller CJ, Gröticke I, Bankstahl M, Löscher W (2009) Behavioral and cognitive alterations, spontaneous seizures, and neuropathology developing after a pilocarpine-induced status epilepticus in C57BL/6 mice. *Exp Neurol* 219:284–297. [CrossRef](#) [Medline](#)
- Nadler JV, Perry BW, Cotman CW (1978) Intraventricular kainic acid preferentially destroys hippocampal pyramidal cells. *Nature* 271:676–677. [Medline](#)
- Otsuka S, Ohkido T, Itakura M, Watanabe S, Yamamori S, Iida Y, Saito M, Miyaoka H, Takahashi M (2016) Dual mechanisms of rapid expression of anxiety-related behavior in pilocarpine-treated epileptic mice. *Epilepsy Res* 123:55–67. [CrossRef](#) [Medline](#)
- Perrine K, Hermann BP, Meador KJ, Vickrey BG, Cramer JA, Hays RD, Devinsky O (1995) The relationship of neuropsychological functioning to quality of life in epilepsy. *Arch Neurol* 52:997–1003. [Medline](#)
- Pinel JP, Rovner LI (1978) Experimental epileptogenesis: kindling-induced epilepsy in rats. *Exp Neurol* 58:190–202. [Medline](#)
- Racine R, Rose PA, Burnham WM (1977) Afterdischarge thresholds and kindling rates in dorsal and ventral hippocampus and dentate gyrus. *Can J Neurol Sci* 4:273–278. [Medline](#)
- Riban V, Bouillere V, Pham-Lê BT, Fritschy J-MM, Marescaux C, Depaulis A (2002) Evolution of hippocampal epileptic activity during the development of hippocampal sclerosis in a mouse model of temporal lobe epilepsy. *Neuroscience* 112:101–111. [CrossRef](#)
- Scharfman HE, Sollas AL, Berger RE, Goodman JH (2003) Electrophysiological evidence of monosynaptic excitatory transmission between granule cells after seizure-induced mossy fiber sprouting. *J Neurophysiol* 90:2536–47. [CrossRef](#) [Medline](#)
- Scheibel ME, Crandall PH, Scheibel AB (1974) The hippocampal-dentate complex in temporal lobe epilepsy. A Golgi study. *Epilepsia* 15:55–80. [Medline](#)
- Schidlitzki A, Twele F, Klee R, Walzl I, Römermann K, Bröer S, Meller S, Gerhäuser I, Rankovic V, Li D, Brandt C, Bankstahl M, Töllner K, Löscher W (2017) A combination of NMDA and AMPA receptor antagonists retards granule cell dispersion and epileptogenesis in a model of acquired epilepsy. *Sci Rep* 7:12191. [CrossRef](#)
- Schwarcz R, Zaczek R, Coyle JT (1978) Microinjection of kainic acid into the rat hippocampus. *Eur J Pharmacol* 50:209–220. [Medline](#)
- Schwarzer C, Sperk G (1995) Hippocampal granule cells express glutamic acid decarboxylase-67 after limbic seizures in the rat. *Neuroscience* 69:705–709. [Medline](#)
- Schwob JE, Fuller T, Price JL, Olney JW (1980) Widespread patterns of neuronal damage following systemic or intracerebral injections of kainic acid: a histological study. *Neuroscience* 5:991–1014. [Medline](#)
- Scott A, Sharpe L, Hunt C, Gandy M (2017) Anxiety and depressive disorders in people with epilepsy: a meta-analysis. *Epilepsia* 58:973–982. [CrossRef](#) [Medline](#)
- Shah S, Lubeck E, Zhou W, Cai L (2016) In situ transcription profiling of single cells reveals spatial organization of cells in the mouse hippocampus. *Neuron* 92:342–357. [CrossRef](#) [Medline](#)
- Sheybani L, Birot G, Contestabile A, Seeck M, Kiss JZ, Schaller K, Michel CM, Quairiaux C (2018) Electrophysiological evidence for the development of a self-sustained large-scale epileptic network in the kainate mouse model of temporal lobe epilepsy. *J Neurosci* 38:3776–3791. [CrossRef](#) [Medline](#)
- Sloviter R (1992) Possible functional consequences of synaptic reorganization in the dentate gyrus of kainate-treated rats. *Neurosci Lett* 137:91–96. [CrossRef](#)
- Sloviter R, Zappone C, Harvey B (2006) Kainic acid-induced recurrent mossy fiber innervation of dentate gyrus inhibitory interneurons: possible anatomical substrate of granule cell hyperinhibition in chronically epileptic rats. *J Comp Neur* 494:944–960. [CrossRef](#)
- Straessle A, Loup F, Arabadzisz D, Ohning G, Fritschy J (2003) Rapid and long term alterations of hippocampal GABA<sub>B</sub> receptors in a mouse model of temporal lobe epilepsy. *Eur J Neurosci* 18:2213–2226. [CrossRef](#)
- Strange BA, Witter MP, Lein ES, Moser EI (2014) Functional organization of the hippocampal longitudinal axis. *Nat Rev Neurosci* 15:655–669. [CrossRef](#) [Medline](#)
- Sunnen CN, Brewster AL, Lugo JN, Vanegas F, Turcios E, Mukhi S, Parghi D, D’Arcangelo G, Anderson AE (2011) Inhibition of the mammalian target of rapamycin blocks epilepsy progression in NS-Pten conditional knockout mice. *Epilepsia* 52:2065–2075. [CrossRef](#) [Medline](#)
- Suzuki F, Junier MP, Guilhem D, Sørensen JC, Onteniente B (1995) Morphogenetic effect of kainate on adult hippocampal neurons associated with a prolonged expression of brain-derived neurotrophic factor. *Neuroscience* 64:665–674. [Medline](#)
- Suárez LM, Cid E, Gal B, Inostroza M, Brotons-Mas JR, Gómez-Domínguez D, de la Prida LM, Solís JMM (2012) Systemic injection of kainic acid differently affects LTP magnitude depending on its epileptogenic efficiency. *PLoS One* 7:e48128. [CrossRef](#)
- Tanaka T, Kaijima M, Daita G, Ohgami S, Yonemasu Y, Riche D (1982) Electroclinical features of kainic acid-induced status epilepticus in freely moving cats. Microinjection into the dorsal hippocampus. *Electroencephalogr Clin Neurophysiol* 54:288–300. [Medline](#)
- Tchekalarova J, Pechlivanova D, Atanasova T, Markova P, Lozanov V, Stoynev A (2011) Diurnal variations in depression-like behavior

- of Wistar and spontaneously hypertensive rats in the kainate model of temporal lobe epilepsy. *Epilepsy Behav* 20:277–285. [CrossRef](#) [Medline](#)
- Tu B, Timofeeva O, Jiao Y, Nadler JV (2005) Spontaneous release of neuropeptide Y tonically inhibits recurrent mossy fiber synaptic transmission in epileptic brain. *J Neurosci* 25:1718–1729. [CrossRef](#)
- Twele F, Töllner K, Bankstahl M, Löscher W (2016a) The effects of carbamazepine in the intrahippocampal kainate model of temporal lobe epilepsy depend on seizure definition and mouse strain. *Epilepsia Open* 1:45–60. [CrossRef](#)
- Twele F, Töllner K, Brandt C, Löscher W (2016b) Significant effects of sex, strain, and anesthesia in the intrahippocampal kainate mouse model of mesial temporal lobe epilepsy. *Epilepsy Behav* 55:47–56. [CrossRef](#)
- Twele F, Schidlitzki A, Töllner K, Löscher W (2017) The intrahippocampal kainate mouse model of mesial temporal lobe epilepsy: lack of electrographic seizure-like events in sham controls. *Epilepsia Open* 2:180–187. [CrossRef](#) [Medline](#)
- Vogel Ciernia A, Wood M (2014) Examining object location and object recognition memory in mice. *Curr Protoc Neurosci* 69:8.31.1–8.31.17.
- Vrinda M, Sasidharan A, Aparna S, Srikumar BN, Kutty BM, Shankaranarayana Rao BS (2017) Enriched environment attenuates behavioral seizures and depression in chronic temporal lobe epilepsy. *Epilepsia* 58:1148–1158. [CrossRef](#) [Medline](#)
- Weitz A, Fang Z, Lee H, Fisher R, Smith W, Choy M, Liu J, Lin P, Rosenberg M, Lee J (2015) Optogenetic fMRI reveals distinct, frequency-dependent networks recruited by dorsal and intermediate hippocampus stimulations. *Neuroimage* 107:229–241. [CrossRef](#) [Medline](#)
- Wenzel HJ, Woolley CS, Robbins CA, Schwartzkroin PA (2000) Kainic acid-induced mossy fiber sprouting and synapse formation in the dentate gyrus of rats. *Hippocampus* 10:244–260. [CrossRef](#) [Medline](#)
- Williams P, Dou P, Dudek E (2004) Epilepsy and synaptic reorganization in a perinatal rat model of hypoxia-ischemia. *Epilepsia* 45:1210–1218. [CrossRef](#)
- Winters BD, Bussey TJ (2005) Transient inactivation of perirhinal cortex disrupts encoding, retrieval, and consolidation of object recognition memory. *J Neurosci* 25:52–61. [CrossRef](#) [Medline](#)
- Winters BD, Forwood SE, Cowell RA, Saksida LM, Bussey TJ (2004) Double dissociation between the effects of peri-postrhinal cortex and hippocampal lesions on tests of object recognition and spatial memory: heterogeneity of function within the temporal lobe. *J Neurosci* 24:5901–5908. [CrossRef](#) [Medline](#)
- Wintink AJ, Young NA, Davis AC, Gregus A, Kalynchuk LE (2003) Kindling-induced emotional behavior in male and female rats. *Behav Neurosci* 117:632–640. [Medline](#)
- Wuarin JP, Dudek FE (1996) Electrographic seizures and new recurrent excitatory circuits in the dentate gyrus of hippocampal slices from kainate-treated epileptic rats. *J Neurosci* 16:4438–4448. [Medline](#)
- Young CC, Stegen M, Bernard R, Müller M, Bischofberger J, Veh RWW, Haas CA, Wolfart J (2009) Upregulation of inward rectifier K<sup>+</sup> (Kir2) channels in dentate gyrus granule cells in temporal lobe epilepsy. *J Physiol (Lond)* 587:4213–4233. [CrossRef](#) [Medline](#)
- Zhang X, Cui S-SS, Wallace AE, Hannesson DK, Schmued LC, Saucier DM, Honer WG, Corcoran ME (2002) Relations between brain pathology and temporal lobe epilepsy. *J Neurosci* 22:6052–6061. [Medline](#)