

# Cardiac mesenchymal stromal cells are a source of adipocytes in arrhythmogenic cardiomyopathy

E. Sommariva<sup>1\*</sup>, S. Brambilla<sup>1</sup>, C. Carbucicchio<sup>2</sup>, E. Gambini<sup>1</sup>, V. Meraviglia<sup>3</sup>, A. Dello Russo<sup>2</sup>, F.M. Farina<sup>1</sup>, M. Casella<sup>2</sup>, V. Catto<sup>2</sup>, G. Pontone<sup>4</sup>, M. Chiesa<sup>5,6</sup>, I. Stadiotti<sup>1</sup>, E. Cogliati<sup>7</sup>, A. Paolin<sup>7</sup>, N. Ouali Alami<sup>1</sup>, C. Preziuso<sup>8</sup>, G. d'Amati<sup>8</sup>, G.I. Colombo<sup>5</sup>, A. Rossini<sup>3</sup>, M.C. Capogrossi<sup>9</sup>, C. Tondo<sup>2†</sup>, and G. Pompilio<sup>1,10†</sup>

<sup>1</sup>Vascular Biology and Regenerative Medicine Unit, Centro Cardiologico Monzino IRCCS, via Parea 4, Milan 20138, Italy; <sup>2</sup>Cardiac Arrhythmia Research Centre, Centro Cardiologico Monzino IRCCS, Milan, Italy; <sup>3</sup>Center for Biomedicine, European Academy Bozen/Bolzano (EURAC), Bolzano, Italy - Affiliated Institute of the University of Lübeck, Lübeck, Germany; <sup>4</sup>Department of Cardiovascular Imaging, Centro Cardiologico Monzino IRCCS, Milan, Italy; <sup>5</sup>Immunology and Functional Genomics Unit, Centro Cardiologico Monzino IRCCS, Milan, Italy; <sup>6</sup>Electrical Computer and Biomedical Engineering, Università degli Studi di Pavia, Pavia, Italy; <sup>7</sup>Tissue Bank of Veneto Region, Ca' Foncello Hospital, Treviso, Italy; <sup>8</sup>Department of Radiological, Oncological and Pathologic Sciences, La Sapienza University, Rome, Italy; <sup>9</sup>Laboratory of Vascular Pathology, Istituto Dermopatico dell'Immacolata IRCCS, Rome, Italy; and <sup>10</sup>Department of Clinical Sciences and Community Health, Università degli Studi di Milano, Milan, Italy

Received 20 March 2015; revised 1 October 2015; accepted 7 October 2015; online publish-ahead-of-print 20 November 2015

See page 1847 for the editorial comment on this article (doi:10.1093/eurheartj/ehv645)

## Aim

Arrhythmogenic cardiomyopathy (ACM) is a genetic disorder mainly due to mutations in desmosomal genes, characterized by progressive fibro-adipose replacement of the myocardium, arrhythmias, and sudden death. It is still unclear which cell type is responsible for fibro-adipose substitution and which molecular mechanisms lead to this structural change. Cardiac mesenchymal stromal cells (C-MSC) are the most abundant cells in the heart, with propensity to differentiate into several cell types, including adipocytes, and their role in ACM is unknown. The aim of the present study was to investigate whether C-MSC contributed to excess adipocytes in patients with ACM.

## Methods and results

We found that, in ACM patients' explanted heart sections, cells actively differentiating into adipocytes are of mesenchymal origin. Therefore, we isolated C-MSC from endomyocardial biopsies of ACM and from not affected by arrhythmogenic cardiomyopathy (NON-ACM) (control) patients. We found that both ACM and control C-MSC express desmosomal genes, with ACM C-MSC showing lower expression of plakophilin (PKP2) protein vs. controls. Arrhythmogenic cardiomyopathy C-MSC cultured in adipogenic medium accumulated more lipid droplets than controls. Accordingly, the expression of adipogenic genes was higher in ACM vs. NON-ACM C-MSC, while expression of cell cycle and anti-adipogenic genes was lower. Both lipid accumulation and transcription reprogramming were dependent on PKP2 deficiency.

## Conclusions

Cardiac mesenchymal stromal cells contribute to the adipogenic substitution observed in ACM patients' hearts. Moreover, C-MSC from ACM patients recapitulate the features of ACM adipogenesis, representing a novel, scalable, patient-specific *in vitro* tool for future mechanistic studies.

## Keywords

Arrhythmogenic cardiomyopathy • Mesenchymal stromal cells • Adipogenesis • Fibrofatty substitution • Plakophilin2 • Plakoglobin

\* Corresponding author. Tel: +39 02 5800 2026, Fax: +39 02 5800 2342, Email [esommariva@ccfm.it](mailto:esommariva@ccfm.it)

† These authors contributed equally to the present work.

© The Author 2015. Published by Oxford University Press on behalf of the European Society of Cardiology.

This is an Open Access article distributed under the terms of the Creative Commons Attribution Non-Commercial License (<http://creativecommons.org/licenses/by-nc/4.0/>), which permits non-commercial re-use, distribution, and reproduction in any medium, provided the original work is properly cited. For commercial re-use, please contact [journals.permissions@oup.com](mailto:journals.permissions@oup.com)

## Translational perspective

Fibro-adipose substitution has a double detrimental effect on the myocardium in arrhythmogenic cardiomyopathy (ACM), worsening arrhythmogenesis by creating a non-conductive substrate, and causing ventricular dysfunction leading to heart failure. Notably, to-date no etiological therapy is available. This work introduces, for the first time, the stromal cardiac compartment as a key player in ACM ventricular adipose substitution: we demonstrated that cardiac human mesenchymal stromal cells undergo adipogenic differentiation both in ACM explanted hearts and in culture through a *PKP2*-dependent mechanism. Cardiac mesenchymal stromal cells constitute a suitable cellular platform for future mechanistic studies and a potential target for future therapies.

## Introduction

Arrhythmogenic cardiomyopathy (ACM) is a genetic disease in which the ventricular myocardium, predominantly the right ventricle, is progressively substituted by fibro-adipose tissue. Arrhythmogenic cardiomyopathy is associated with severe ventricular arrhythmias, sudden death, and progressive heart failure.

Fibro-adiposis is the hallmark of the disease; it typically starts from the epicardium at the 'triangle of dysplasia' and progresses toward the endocardium. Arrhythmogenic cardiomyopathy has a double pathologic phenotype: arrhythmias and ventricular dysfunction.<sup>1</sup> The pathogenic mechanisms for both phenotypes are unclear. Although a primary electrical cause of arrhythmias involving sodium channels<sup>2,3</sup> and connexins<sup>4,5</sup> has been proposed,<sup>2,6</sup> fibro-fatty substitution may worsen the condition of patients' by creating non-conducting tissue. Moreover, progressive adipocyte deposition leads to loss of cardiac contractility and ultimately heart failure.

The disease usually has an autosomal dominant transmission with variable penetrance and expressivity. Rare recessive forms of ACM occur in conjunction with skin manifestations. Approximately 50% of symptomatic individuals harbour a mutation in one of the genes of the five major members of the cardiac desmosome: DSP (desmoplakin),<sup>7</sup> PG (plakoglobin),<sup>8</sup> PKP2 (plakophilin2),<sup>9</sup> DSG2 (desmoglein2),<sup>10</sup> and DSC2 (desmocollin2).<sup>11</sup> Desmosomes are complex cellular junctions found mainly in epidermal cells and in cardiac myocytes.<sup>12</sup> Non-desmosomal genes *TGFB3*, *TMEM43*, *LMNA*, *DES*, *TTN*, *PLN*, *CTNNA3*, *RYR2*, and a number of other loci have also been associated with ACM.<sup>13</sup>

It has been suggested that defective desmosomes<sup>14</sup> cause stretch-induced cardiomyocyte death<sup>15</sup> and impair intracellular signaling that determines cell fate.<sup>16,17</sup> As a consequence, a cell differentiation hypothesis has been formulated to explain the fibro-adipose replacement, involving the inhibition of canonical *WNT*/ $\beta$ -catenin signaling, an important regulator of myogenesis vs. adipogenesis.<sup>17–20</sup>

A key question in ACM pathogenesis is the cellular origin of excess adipocytes. The signal for enhanced fibro-adiposis is likely to originate from cells that express desmosomes. Mature cardiomyocytes,<sup>21–23</sup> second heart field cardiovascular progenitor cells (c-KIT/*SCA1*),<sup>24</sup> or sub-epicardial progenitor cells<sup>25</sup> are the most extensively studied candidates.

Mesenchymal stromal cells (MSC) are supportive cells found in many tissues.<sup>26</sup> They are multipotent and, under appropriate stimuli, can differentiate into osteoblasts, chondroblasts, and adipocytes.<sup>26,27</sup> Mesenchymal stromal cells are characterized by the expression of mesenchymal surface antigens such as CD44, CD105, CD29, and CD90. In our laboratory, a population of cardiac mesenchymal

stromal cells (C-MSC) isolated from adult human auricles have been characterized.<sup>27</sup> In a normal adult heart, cardiomyocytes only represent 30% of the total cell number. The remaining 70% consists of cells other than cardiomyocytes, among which C-MSC are the vast majority.<sup>28</sup> Cardiac mesenchymal stromal cells play a critical role in maintaining normal cardiac function, as well as in cardiac remodelling during pathological conditions.<sup>29</sup> Mesenchymal stromal cells switch between osteoblast and adipocyte differentiation has been reported as a causative mechanism of osteoporosis.<sup>30</sup>

The present study addresses, for the first time, the role of C-MSC in ACM adipose substitution in human hearts. We provide evidence that in ACM hearts cells differentiating into adipocytes express mesenchymal markers and C-MSC isolated from human ACM hearts express desmosomal genes and are more prone to accumulate fat (lipogenesis) and specifically differentiate into adipocytes compared with C-MSC from control hearts.

## Methods

Detailed/additional methods are presented in Supplementary material online.

### Ethical statement

This study complies with the declaration of Helsinki. Arrhythmogenic cardiomyopathy (ACM) patients' samples use for research was approved by Centro Cardiologico Monzino and La Sapienza University Ethic Committees. Samples from patients not affected by arrhythmogenic cardiomyopathy (NON-ACM) were obtained from cadaveric donors from Fondazione Banca dei Tessuti di Treviso.

### Cardiac mesenchymal stromal cells culture and adipogenic differentiation

Cardiac mesenchymal stromal cells were isolated, cultured, and characterized as previously reported.<sup>27</sup> Adipogenic differentiation was obtained using adipogenic medium<sup>27</sup> for 72 h or 1 week. Fat accumulation was tested by Oil Red O (ORO) or Nile Red staining; adipogenesis was tested by anti-Perilipin1 (PLIN1) antibody staining.

### Gene expression analysis

qRT-PCR was performed in duplicate using 10 ng cDNA obtained after total RNA extraction with TRIzol, treatment with Dnase I, and reverse transcription with Superscript III according to manufacturer's instructions. Primer sequences are reported in Supplementary material online, *Table S4*.

### Protein expression analysis

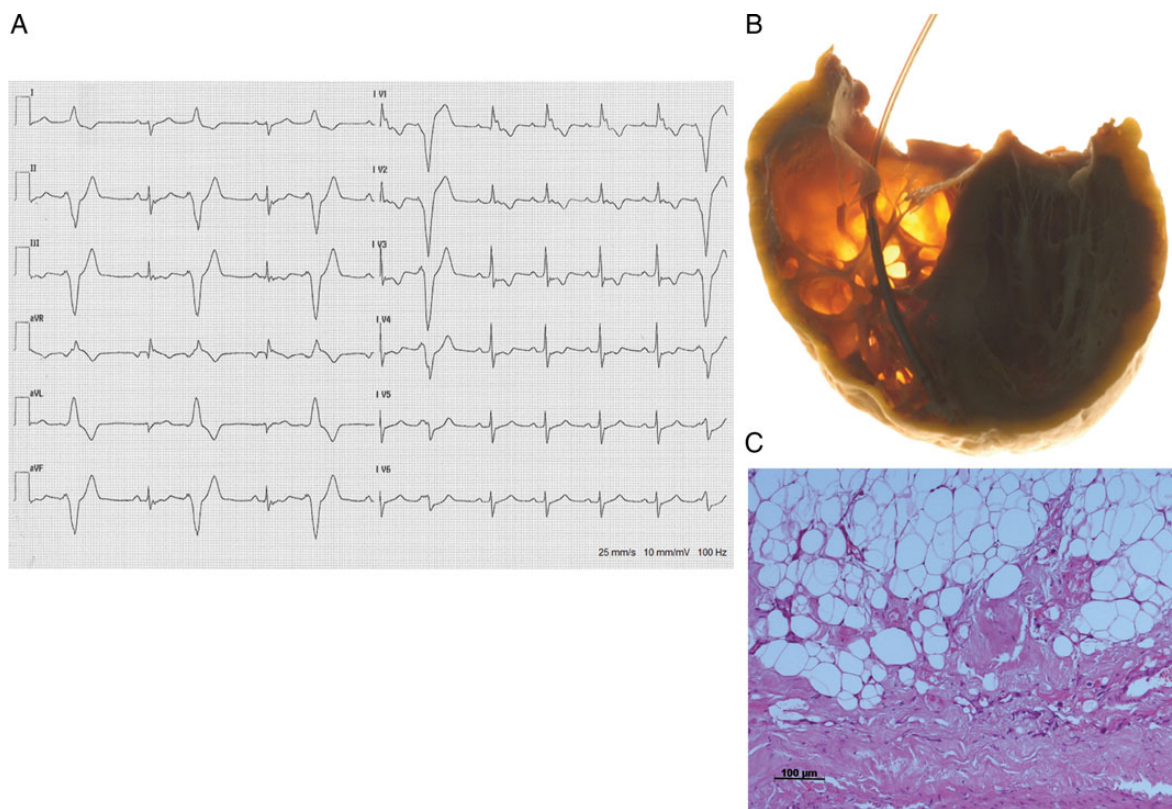
Western blots were performed by standard procedures, after total protein extraction by Laemmli buffer lysis, target proteins were detected with

**Table 1** Clinical characteristics of enrolled patients, classified by major or minor arrhythmogenic cardiomyopathy diagnostic criteria<sup>33</sup>

Sample type	ACM patient ID	Sex age	Type/age of first manifestation	Dysfunction and structural alterations			Tissue characterization of wall	Repolarization ab.	Depolarization/ conduction ab.	Arrhythmias	Family history	Mutations in ACM-associated genes
				Echo	CMR	AG						
EH → FFPE	H1	F 42	VT/34	Major	Major	n.a.	Major	Major	Major	Neg.	n.a.	
	H2	F 37	Sincope, sustained VT/33	Major	Major	n.a.	Major	Neg.	Minor	Major	DSP: c.4198C > T	
	H3	M 53	VT/11	Major	n.a.	n.a.	Major	Neg.	Minor	Neg.	n.a.	
Biopsy → FFPE	B1	F 37	Palpitations, polymorphic PVC/37	Minor	Minor	n.a.	Major	Neg.	Neg.	Minor	Neg.	None <sup>a</sup>
	B2	M 48	Sustained VT/34	Minor	Major	n.a.	Major	Neg.	Neg.	Major	Neg.	None
	B3	M 26	ECG- inverted T waves/26	Neg.	Major	n.a.	Minor	Major	Neg.	Minor	Neg.	None
Biopsy → C-MS-C	B4	M 54	Cardiac arrest/50	Neg.	Minor	n.a.	Major	Neg.	Neg.	Major	Major	PKP2: c.2013delC
	B5	M 44	Cardiac arrest/42	Minor	Major	n.a.	Major	Major	Neg.	Major	Major	PKP2: c.1643delG
	B6	M 41	PVC/32	Major	n.a.	Major	Not conclusive	Major	Neg.	Minor	Major	PKP2: c.1881delC not prev. described
	B7	M 51	Sustained VT/50	Minor	Minor	n.a.	Major	Minor	Neg.	Major	Neg.	None
	B8	M 57	Polymorphic PVC/56	Neg.	Minor	n.a.	Minor	Neg.	Minor	Minor	Neg.	None
	B9	F 38	ECG- inverted T waves/37	Neg.	Neg.	n.a.	Major	Minor	Neg.	Minor	Major	PKP2: c.2013delC

FFPE, formalin-fixed, paraffin-embedded tissue section; Echo, 2D-echocardiography; CMR, cardiac magnetic resonance; AG, angiography; n.a., not available; PVC, premature ventricular contractions; VT, ventricular tachycardia; EH, explanted heart; neg., negative; ab., abnormalities.

<sup>a</sup>Only PKP2 was examined.



**Figure 1** Characteristics of an arrhythmogenic cardiomyopathy patient (H1) who underwent heart transplant. (A) Twelve-lead electrocardiogram of a patient with an advanced form of arrhythmogenic cardiomyopathy, recorded 2 years before heart transplant, characterized by sinus rhythm, complete right bundle branch block, ST-T wave abnormalities in leads II, III, aVF, V1–V4 where an  $\epsilon$  wave can also be identified. Frequent monomorphic premature ventricular beats originating from the inferior right ventricular wall are recorded. (B) Explanted heart of a late-stage arrhythmogenic cardiomyopathy patient, with biventricular involvement. Severe fibro-fatty infiltration is visible in the right ventricle, which is dilated with thin walls. A high-voltage implantable cardioverter defibrillator lead is visible in the right ventricular chamber. (C) Histological preparation of right ventricle tissue sample of the explanted heart (haematoxylin and eosin staining). The scale bar indicates 100  $\mu\text{m}$ .

primary antibodies PKP2, PG, DSP1/2, DSG2, DSC2, PPAR $\gamma$ , PLIN1, FABP4, and GAPDH (see Supplementary material online, Table S3).

### Plakophilin2 overexpression

Cardiac mesenchymal stromal cells were transfected with control GFP or wild-type PKP2-GFP vector<sup>30</sup> using the Neon Transfection System.

### Cardiac mesenchymal stromal cells and heart section immunofluorescence

Cells were fixed with 4% paraformaldehyde, paraffin was removed from embedded sections and antigen unmasking was performed. Primary and secondary antibodies staining was carried out in 2% serum.<sup>31</sup>

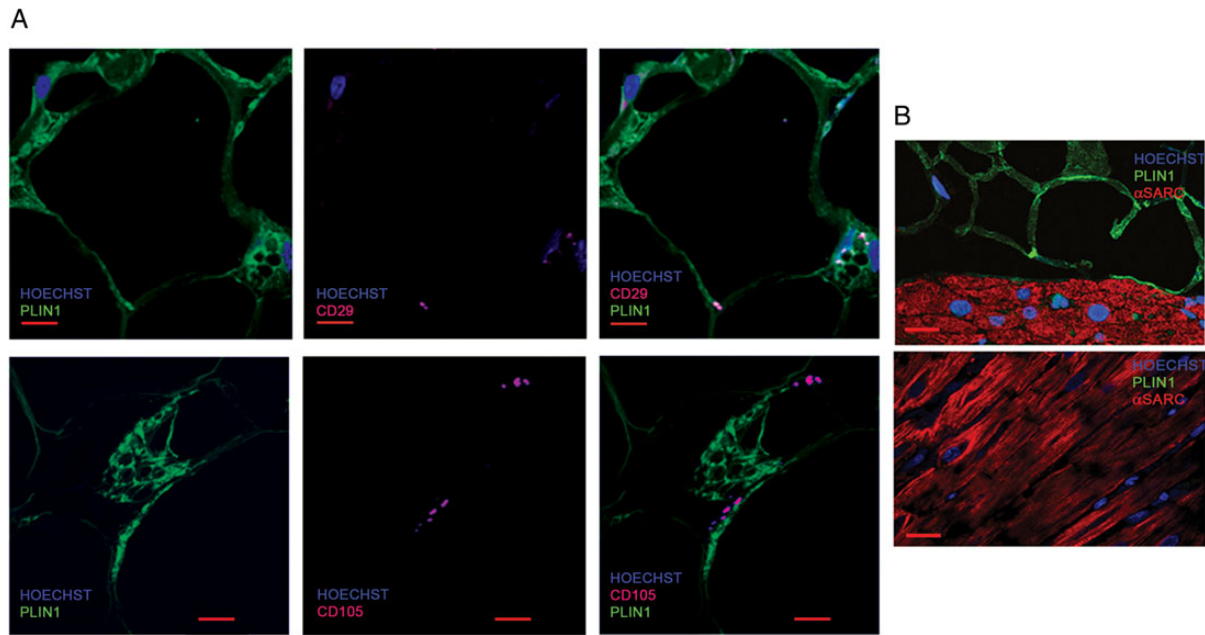
### Statistical analysis

Descriptive variables are reported as mean  $\pm$  standard deviation. Results were analysed by two-tailed Student's *t*-test, Pearson's correlation test or Fisher's exact test. Benjamini Hochberg correction was applied when appropriate. Results were considered statistically significant at  $P < 0.05$ .

## Results

### Cells differentiating into adipocytes in arrhythmogenic cardiomyopathy human hearts are of mesenchymal origin

To understand the cellular origin of excess adipocytes in ACM hearts, we performed double staining with PLIN1 antibody and mesenchymal markers CD29 and CD105 on serial slices of three ACM explanted hearts (H1–3, Table 1; Figure 1) and three autopsied control hearts (see Supplementary material online, Table S1). PLIN1 is a protein, specifically expressed in adipocytes,<sup>32</sup> surrounding lipid droplets. We observed contour staining of large lipid drops of mature adipocytes, as well as small droplets which eventually fuse during maturation of immature adipocytes. We found that all of these differentiating cells express the mesenchymal markers CD29 and CD105 (Figure 2A). We did not detect PLIN1 staining in cells expressing  $\alpha$ -sarcomeric actin ( $\alpha$ SARC; Figure 2B), which suggests that mature cardiomyocytes are not the source of adipogenesis. Further, since the involvement of cardiac progenitor cells was suggested,<sup>20</sup> we looked for immature adipocytes expressing the c-KIT marker. We detected occasional PLIN1 and c-KIT



**Figure 2** Cells undergoing adipogenic differentiation in arrhythmogenic cardiomyopathy hearts express the mesenchymal markers CD29 and CD105 and not the cardiomyocyte marker  $\alpha$ -sarcomeric actin. Immunostaining of FFPE sections of explanted hearts from three arrhythmogenic cardiomyopathy patients. Nuclei are stained with Hoechst 33258. (A) PLIN1 antibody marks lipid drop membranes identifying pre-adipocytes and CD29 (upper panel), or CD105 (lower panel) as used as mesenchymal markers. The scale bar indicates 10  $\mu$ m. (B) Transversal (upper panel) and longitudinal (lower panel) sections are immunostained with PLIN1 and  $\alpha$ -sarcomeric actin for cardiomyocytes. The scale bar indicates 20  $\mu$ m.

double-positive differentiating cells (see Supplementary material online, *Figure S1*). CD29 and CD105-positive differentiating cells were also found in left ventricle (LV) samples of patients H1 and H2, showing biventricular ACM, whereas only few cells were observed in control hearts (data not shown). Moreover, to verify that pre-adipocytes are of mesenchymal origin even at early phases of the disease, we obtained paraffin sections (FFPE) of biopsies from three patients with mild forms of ACM (B1–3, *Table 1*). We found fewer pre-adipocytes than in explanted hearts; however, all stained positive for mesenchymal markers (see Supplementary material online, *Figure S2A* and *B*). In addition, we did not detect any PLIN1-positive cells co-staining for c-KIT (see Supplementary material online, *Figure S2C*).

### Cardiac mesenchymal stromal cells can be obtained from arrhythmogenic cardiomyopathy hearts and studied *in vitro*

To verify whether the MSC cardiac population may represent the source of excess adipocytes in ACM hearts, C-MSC were isolated from right ventricular endomyocardial bioptic samples from six ACM patients (B4–9, *Table 1*) and from five control subjects' right ventricular autopsy samples (see Supplementary material online, *Table S1*). The biopsy procedure was performed for diagnostic purpose (*Figure 3E* and *F*) in patients with electrocardiogram (ECG; *Figure 3A*) and cardiac magnetic resonance (CMR; *Figure 3B* and Supplementary material online, *Videos A* and *B*) findings suggestive of ACM. Bioptic samples for C-MSC isolation (*Figure 3D*) were acquired in the area adjacent to the electro-anatomical scars (*Figure 3C*), without evidence of adipose substitution.

NON-ACM and ACM C-MSC were selected and characterized for morphology and expression of mesenchymal antigens<sup>27</sup> (see Supplementary material online, *Figure S3* and *Table S2*).

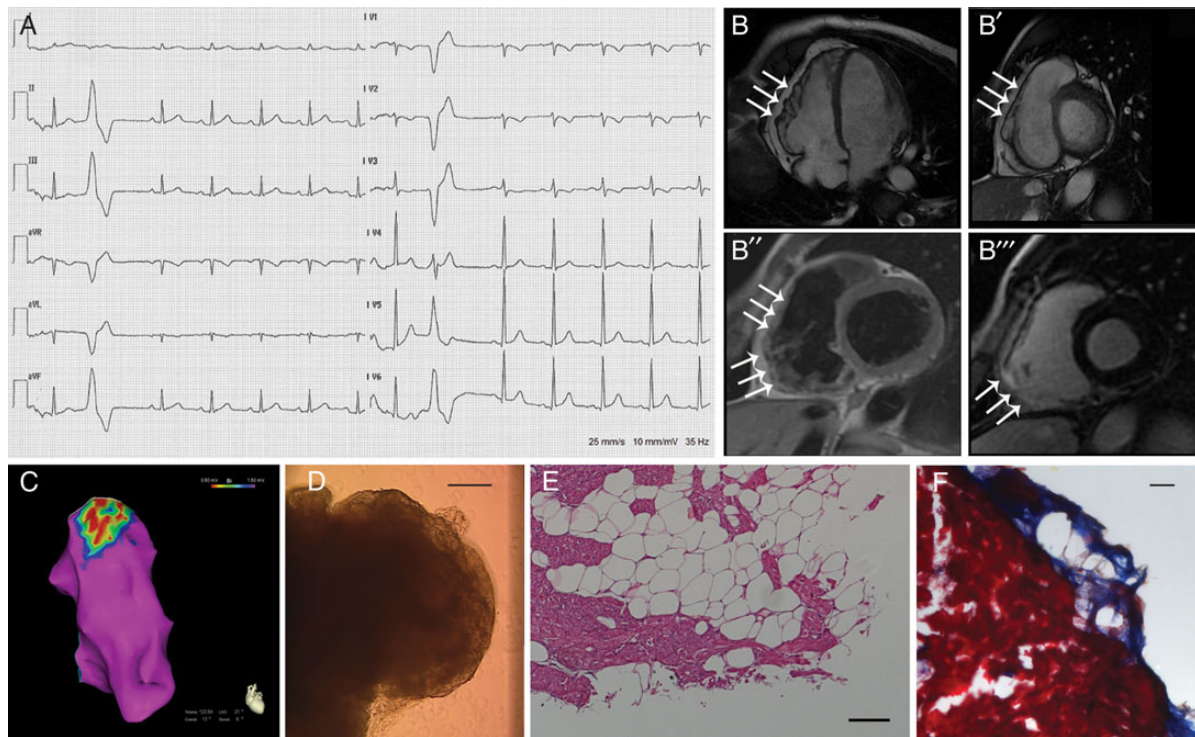
### Cardiac mesenchymal stromal cells express desmosomal genes and proteins

Cardiomyocytes<sup>21–23</sup> or their progenitors<sup>24</sup> have been previously studied in ACM as the only cardiac cell types expressing desmosome genes. As shown by gene expression analysis in *Figure 4A*, we demonstrated that desmosomal genes *PKP2*, *JUP*, *DSG2*, *DSP*, and *DSC2* are detectable in isolated C-MSC, and expressed at similar levels in ACM and control cells. Whole ventricle tissue samples were examined as positive controls. This result raised the possibility that C-MSC may be directly affected by ACM-causing mutations. Western blot analysis confirmed that *PKP2*, *PG*, *DSP*, and *DSC2* proteins were expressed in ACM and control C-MSC. Plakophilin2 expression was lower in ACM C-MSC (*Figure 4B*).

### Arrhythmogenic cardiomyopathy cardiac mesenchymal stromal cells show more propensity than controls to differentiate into adipocytes

When cultured in adipogenic medium (72 h and 1 week),<sup>27</sup> ACM C-MSC accumulated lipids earlier and in significantly higher amounts than NON-ACM control cells (*Figure 5*). Indeed, after 72 h in adipogenic medium, lipid content, quantified by ORO staining, showed statistically different values between NON-ACM and ACM cells





**Figure 3** Representative diagnostic findings of an arrhythmogenic cardiomyopathy patient (B7) who underwent biopsy. (A) Twelve-lead electrocardiogram is characterized by sinus rhythm, normal conduction, negative T waves in V1–V3 leads. A ventricular premature beat originating from the right ventricular outflow tract is shown. (B) Cardiac magnetic resonance: four-chamber long axis (B, online videoA) and short-axis (B', online videoB) steady-state free precession sequences of left ventricle showed dilated right ventricle with multiple diastolic bulging in the subtricuspid region (arrows). The T1-weighted image (B'') and post-contrast late gadolinium enhancement sequence (B''') show high-intensity signal suggesting fibro-adipose infiltration of the right ventricular-free wall (arrows). (C) Three-dimensional electroanatomical bipolar map of the right ventricular (endocardial aspect): normal signals are recorded over the entire right ventricular chamber (preserved voltage amplitude, >1.50 mV, purple), excepted from a portion of the anterior wall that is characterized by low-amplitude voltage (<1 mV, blue-yellow) with a small area of heterogeneous dense scar (<0.5 mV, red). (D) Endomyocardial biopsy bright field image. All biopsies used for cardiac mesenchymal stromal cells isolation were acquired in the area adjacent to the electro-anatomical scar and adipocytes are not evident at gross examination. (E) Histological preparation (haematoxylin and eosin staining) of a biopsic sample acquired in the pathological area, for diagnostic purposes. Confirmation of arrhythmogenic cardiomyopathy diagnosis is given by the evidence of large fibro-fatty substitution. (F) Histological preparation (Masson-trichrome staining) of a biopsic sample. Fibrotic tissue is evident in blue beside adipocytes (white round circles). All the scale bars indicate 100  $\mu$ m.

( $24.65 \pm 3.32$  vs.  $66.97 \pm 12.48$  arbitrary units,  $P < 0.001$ ). This difference persisted after 1 week in adipogenic medium (Figure 5B;  $60.83 \pm 16.67$  vs.  $137.40 \pm 28.11$  a.u.,  $P = 0.001$ ).

The expression of genes involved in adipogenesis or specific for adipocytes was then examined. We found that the enhanced expression of PPAR $\gamma$ , ADIPOQ, FABP4, and PLIN1 after 72 h in adipogenic medium was significantly more pronounced in ACM than in NON-ACM C-MSC (Figure 6A). This result was confirmed by western blot for PPAR $\gamma$ , FABP4, and PLIN1 (Figure 6C). As shown in Figure 6B, a positive correlation exists between ADIPOQ and PLIN1 expression and lipid accumulation analysed by ORO staining ( $r = 0.874$  and  $r = 0.884$ , respectively).

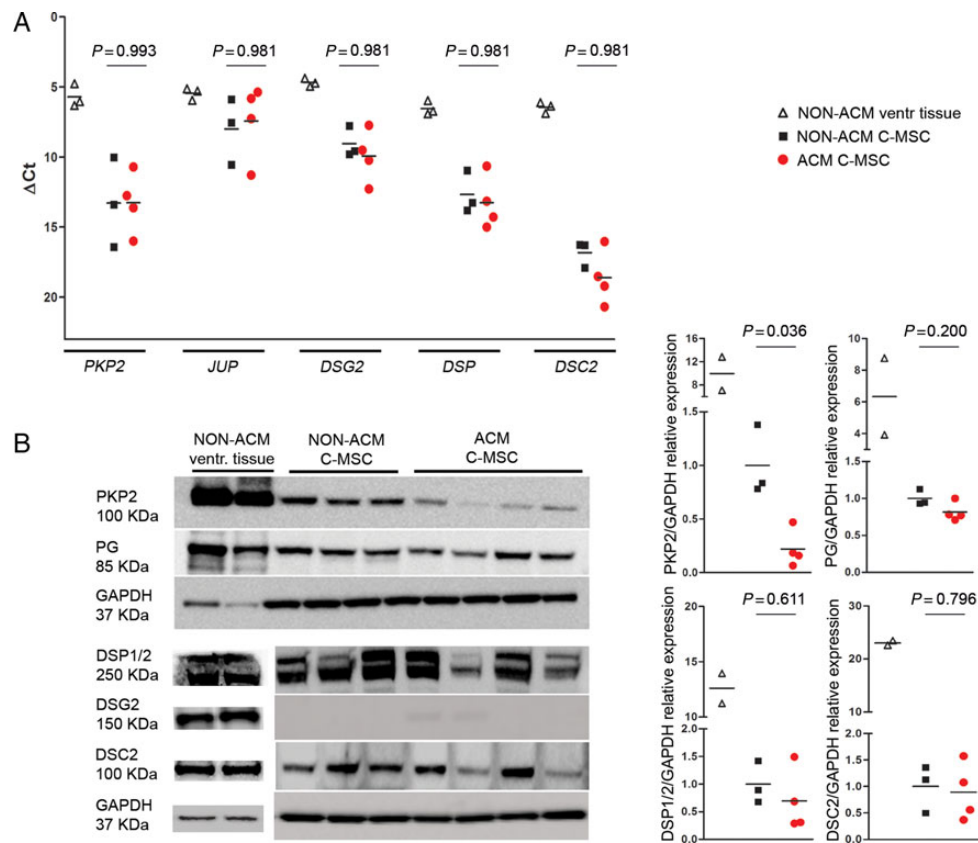
In contrast, the anti-adipogenic gene CTGF<sup>34</sup> and the cell-cycle regulator CCND1 were expressed at significantly lower levels in ACM samples than in NON-ACM controls (Figure 6A).

To test the involvement of the WNT pathway, we treated ACM C-MSC with 6-bromindirubin-3'-oxime (BIO), a drug that inhibits GSK3 $\beta$ <sup>20</sup>. C-MSC cultured with BIO showed a partial (31.25%)

reduction in accumulated lipid droplets ( $P = 0.002$ ) and a 92.24% reduction in ADIPOQ expression ( $P = 0.045$ ; see Supplementary material online, Figure S4). Notably, PG showed a preferential nuclear localization in ACM C-MSC and a predominant localization in the cytoplasm and at cell–cell junctions in NON-ACM C-MSC (see Supplementary material online, Figure S5).

### Lipid accumulation and transcriptional rearrangements in arrhythmogenic cardiomyopathy cardiac mesenchymal stromal cells are dependent on PKP2 deficiency

In order to establish whether the diminished expression of PKP2 plays a causal role in lipid accumulation, ACM C-MSC were transfected either with a plasmid encoding PKP2, or with an empty control vector. PKP2 overexpression was confirmed both at gene and protein levels (Figure 7A). After 72 h in adipogenic medium, cells were examined



**Figure 4** Expression of desmosomal genes and proteins. ACM: samples from patients affected by arrhythmogenic cardiomyopathy; NON-ACM: samples from patients not affected by arrhythmogenic cardiomyopathy. (A) Desmosomal genes are expressed in ventricular mesenchymal stromal cells. Cardiac mesenchymal stromal cells RNA extracts either from patients not affected or affected by arrhythmogenic cardiomyopathy ( $n = 3$  vs.  $n = 4$ ) genes threshold cycles (Ct) with respect to the housekeeping gene *GAPDH* are examined. Total ventricle RNA extracts ( $n = 3$ ) from patients not affected by arrhythmogenic cardiomyopathy are also reported as positive controls. (B) Desmosomal proteins are expressed in cardiac mesenchymal stromal cells, and PKP2 is expressed at a lower level in arrhythmogenic cardiomyopathy cardiac mesenchymal stromal cells. PKP2, PG, DSP1/2, DSG2, DSC2, and house-keeping gene *GAPDH* western blots of protein extracts of cardiac mesenchymal stromal cells from patients not affected by arrhythmogenic cardiomyopathy ( $n = 3$ ) and affected ( $n = 4$ ) are shown. Total ventricle lysates ( $n = 2$ ) from patients not affected by arrhythmogenic cardiomyopathy are shown as positive controls. Densitometry, relative to the loading control *GAPDH*, is shown in the graphs, normalized for the expression of samples from patients not affected by arrhythmogenic cardiomyopathy.

for lipid accumulation and expression of adipogenic genes. Oil Red O staining showed a significant decrease in the number of PKP2-overexpressing cells containing lipid droplets when compared with mock-transfected controls (Figure 7C;  $21.33\% \pm 4.65$  vs.  $32.57\% \pm 4.71$ ,  $P = 0.047$ ). Moreover, PKP2-overexpressing C-MSC showed a 98.10% and a 29.80% decrease in *ADIPOQ* ( $P = 0.034$ ) and *PPAR $\gamma$*  ( $P = 0.032$ ) expression, respectively (Figure 7B). Finally, we confirmed that lipid accumulation is dependent on PKP2 deficiency by using a specific siRNA during adipogenic induction. Indeed, silencing of PKP2 (see Supplementary material online, Figure S6A) was accompanied by a significant increase in lipid accumulation ( $15.87 \pm 6.99$  vs.  $38.66 \pm 16.91$ ;  $P = 0.009$ ; see Supplementary material online, Figure S6B).

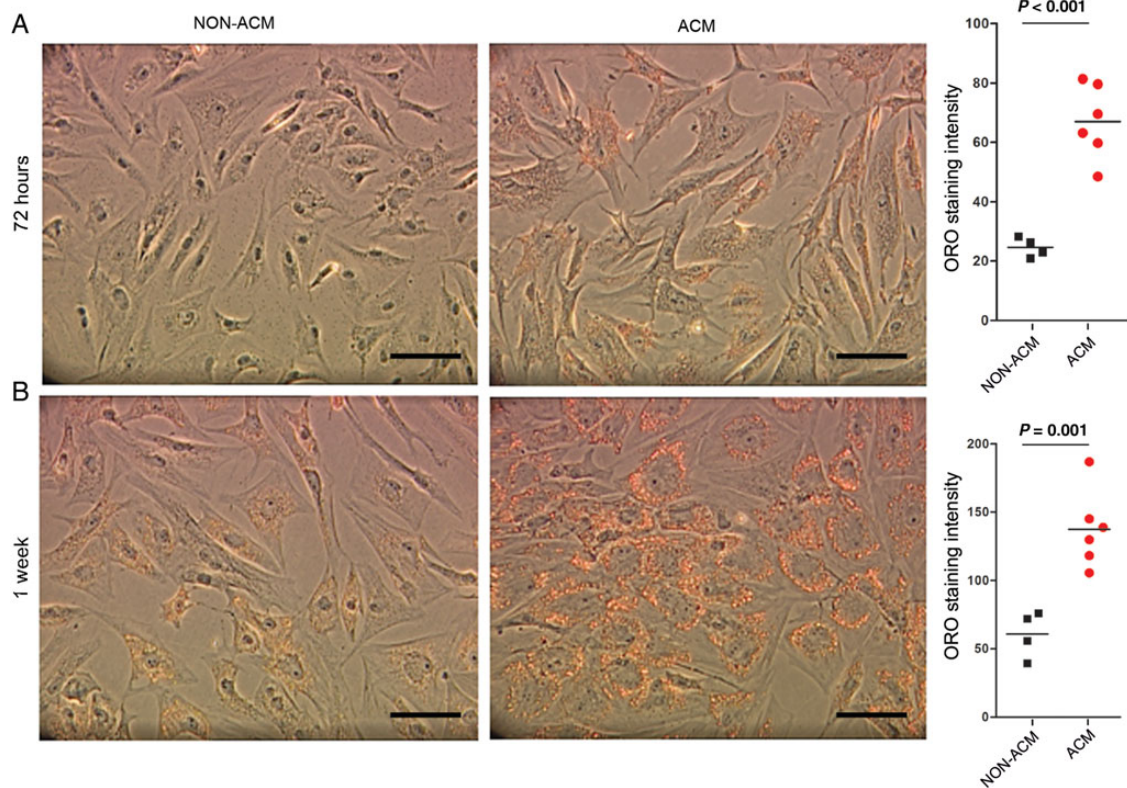
### Arrhythmogenic cardiomyopathy cardiac mesenchymal stromal cells undergo adipogenesis

To verify that the accumulation of lipid droplets is associated with C-MSC differentiation to adipocytes and not to mere lipogenesis,

we analysed the expression of *PLIN1* by qRT-PCR, western blot (Figure 6A and C) and immunofluorescence (Figure 8A). Indeed, ACM C-MSC accumulated lipid surrounded by adipocyte-specific PLIN1 protein. ACM C-MSC cultured in adipogenic medium stained with anti-PLIN1 antibody are phenotypically very similar to the adipogenic differentiating cells detected in ACM patients' hearts (Figures 2 and 8B). Furthermore, ACM C-MSC maintained the mesenchymal marker CD29 during adipogenesis *in vitro* (see Supplementary material online, Figure S7).

## Discussion

To date, ACM has been considered a disease confined to contractile cells even if there is no conclusive experimental evidence to support this hypothesis. To our knowledge, this work is the first demonstration that desmosomal genes are expressed in C-MSC, besides cardiomyocytes, and epithelial cells.<sup>12,35,36</sup> Cardiomyocytes have been shown to accumulate lipid in different models, but each of them



**Figure 5** Cardiac mesenchymal stromal cells obtained from arrhythmogenic cardiomyopathy patients (ACM), cultured in adipogenic medium, accumulate more lipid droplets than control cardiac mesenchymal stromal cells (NON-ACM). Representative images of cardiac mesenchymal stromal cells from bioptic samples of patients affected and not affected by arrhythmogenic cardiomyopathy, cultured for 72 h and 1 week in adipogenic medium, stained with Oil Red O (ORO;  $n = 6$  vs.  $n = 4$ ). The scale bar indicates 50  $\mu\text{m}$ . Quantification of the luminance of the 255 red staining is reported on the right: intensity is expressed in arbitrary units.

exhibit shortcomings. Indeed, induced pluripotent stem cells (iPSC)-derived cardiomyocytes are a promising patient-specific tool to study ACM as they accumulate lipids.<sup>22,23,37</sup> Ongoing studies might overcome the lack of terminal differentiation in cardiomyocytes derived from iPSC, and the presence of residual partially reprogrammed cells.<sup>38</sup> Evidence of desmin and vimentin expression in cells differentiating into adipocytes in heart tissue of a suspected ACM patient has been reported<sup>21</sup>; however, these proteins are not expressed exclusively in cardiomyocytes and adipocytes. Another study claimed that neutral lipids accumulated in ACM right ventricular myocardial tissue<sup>38</sup>; despite this, there was no evidence of myocardial cell differentiation into adipocytes. Finally, transgenic murine models of ACM, expressing different disease-causing mutations under the  $\alpha\text{MHC}$  promoter,<sup>6,16</sup> showed the accumulation of adipocytes in the heart, but trans-differentiation of cardiomyocytes into adipocytes was not investigated. In human ACM specimens, we found neither PLIN1-positive lipid droplets accumulating in cardiomyocytes nor  $\alpha\text{SARC}$  staining in immature adipocytes: this rules out a direct trans-differentiation of cardiomyocytes into adipocytes. Nevertheless, we cannot exclude cardiomyocyte lipogenesis, as previously described.<sup>39</sup>

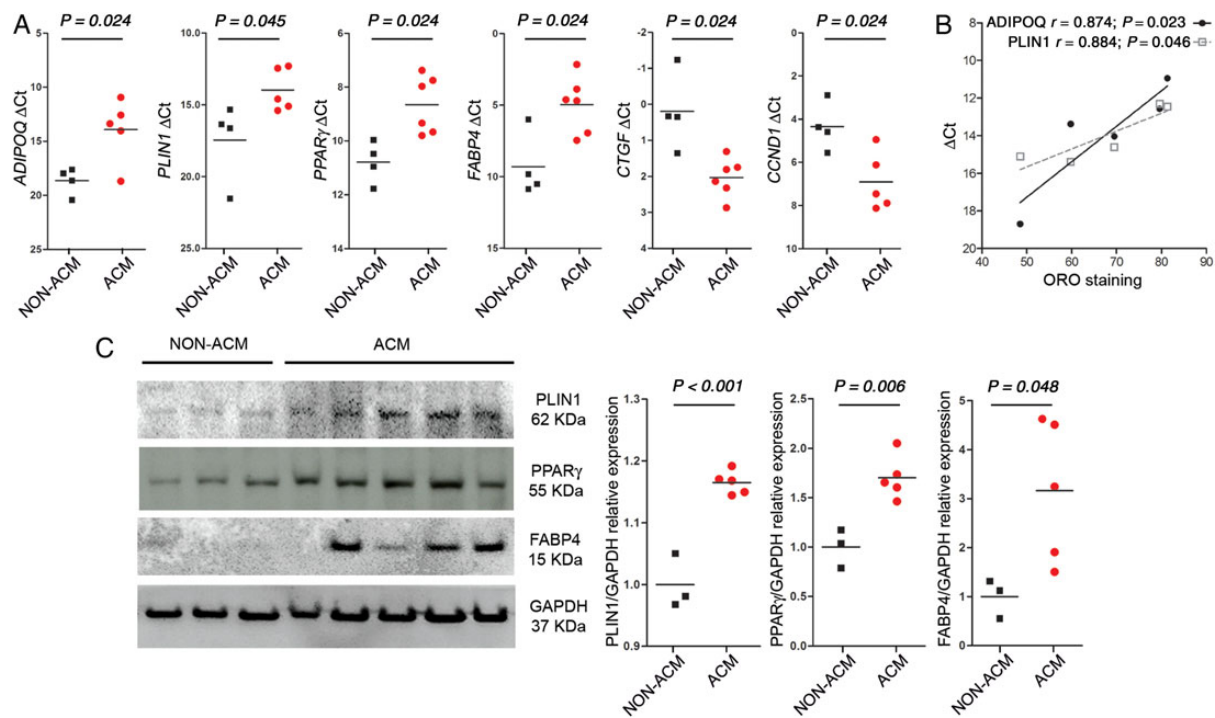
In the present work, we investigated whether the non-contractile cardiac stromal compartment is the cellular source contributing to

excess adipocytes in ACM hearts. Cardiac mesenchymal stromal cells are the most abundant cell type in the heart, have a mesenchymal origin, and exert a fundamental role in maintaining cardiac structural and functional homeostasis in physiologic and pathologic conditions.<sup>29</sup> Importantly, upon appropriate culture conditions C-MSC can differentiate into adipocytes.<sup>27</sup> Therefore we hypothesized and demonstrated that when affected by ACM mutations, C-MSC enhance their ability to accumulate lipids, differentiate into adipocytes, and play a role in fibro-fatty substitution.

Based on the obtained evidence, we advocate C-MSC as a novel non-contractile cell type contributing to excess adipocyte accumulation in ACM. *PKP2*-silenced murine epicardial cells were so far the best characterized non-contractile cell type as a putative source of lipid accumulation.<sup>35,40</sup> Epicardial cells have been recognized as second heart field-derived progenitors of a large fraction of non-myocyte heart cells, including fibroblasts.<sup>41</sup> Epicardial cells silenced for *PKP2* were shown to be able to accumulate more lipid than control epicardial cells (EPC).<sup>35</sup> We believe that this observation is not conflicting with our results. Epicardial cells may undergo epithelial-mesenchymal transition, thus retaining, as adult MSC, the ability to accumulate lipid in a *PKP2*-dependent manner.

Resident cardiac stem cells (*c-KIT/SCA1*) from PG transgenic mice have been indicated by Lombardi et al.<sup>20</sup> as a source of adipocytes.





**Figure 6** Arrhythmogenic cardiomyopathy cardiac mesenchymal stromal cells in adipogenic medium show higher transcription of adipogenic genes and proteins and a lower transcription of anti-adipogenic and proliferation genes, compared to control cells. ACM: samples from patients affected by arrhythmogenic cardiomyopathy; NON-ACM: samples from patients not affected by arrhythmogenic cardiomyopathy. (A) Comparison of transcript abundance (genes threshold cycles [Ct] with respect to the house-keeping gene *GAPDH*) between RNA extract of cardiac mesenchymal stromal cells from patients not affected and affected by arrhythmogenic cardiomyopathy ( $n \geq 4$ ), after 72 h culture in adipogenic medium. (B) *ADIPOQ* and *PLIN1* gene expression positively correlates with lipid accumulation (Oil Red O staining) in arrhythmogenic cardiomyopathy samples. (C) Comparison of *PLIN1*, *PPAR $\gamma$* , and *FABP4* protein abundance between protein extracts of cardiac mesenchymal stromal cells from patients not affected by arrhythmogenic cardiomyopathy ( $n = 3$ ) and from arrhythmogenic cardiomyopathy patients ( $n = 5$ ), after 72 h culture in adipogenic medium. Quantification of the mean protein abundance relative to *GAPDH*, and normalized for values of samples from patients not affected by arrhythmogenic cardiomyopathy, is shown in the graphs.

We also found occasional c-KIT positive cells undergoing adipogenic differentiation in ACM patients' hearts; however, in our opinion, the rates were too low to account for a major role in lipid accumulation. We have previously shown that c-KIT positive cells can express mesenchymal markers,<sup>42</sup> but they represent only the 0.5–1.5% of isolated C-MSC (see Supplementary material online, Figure S1 and Table S2 and<sup>27</sup>). Therefore, the diffuse, homogeneous adipogenic differentiation of the whole ACM C-MSC population observed *in vitro* argues against a major direct contribution of cardiac progenitor cells in the development of fibro-adipose substitution in ACM.

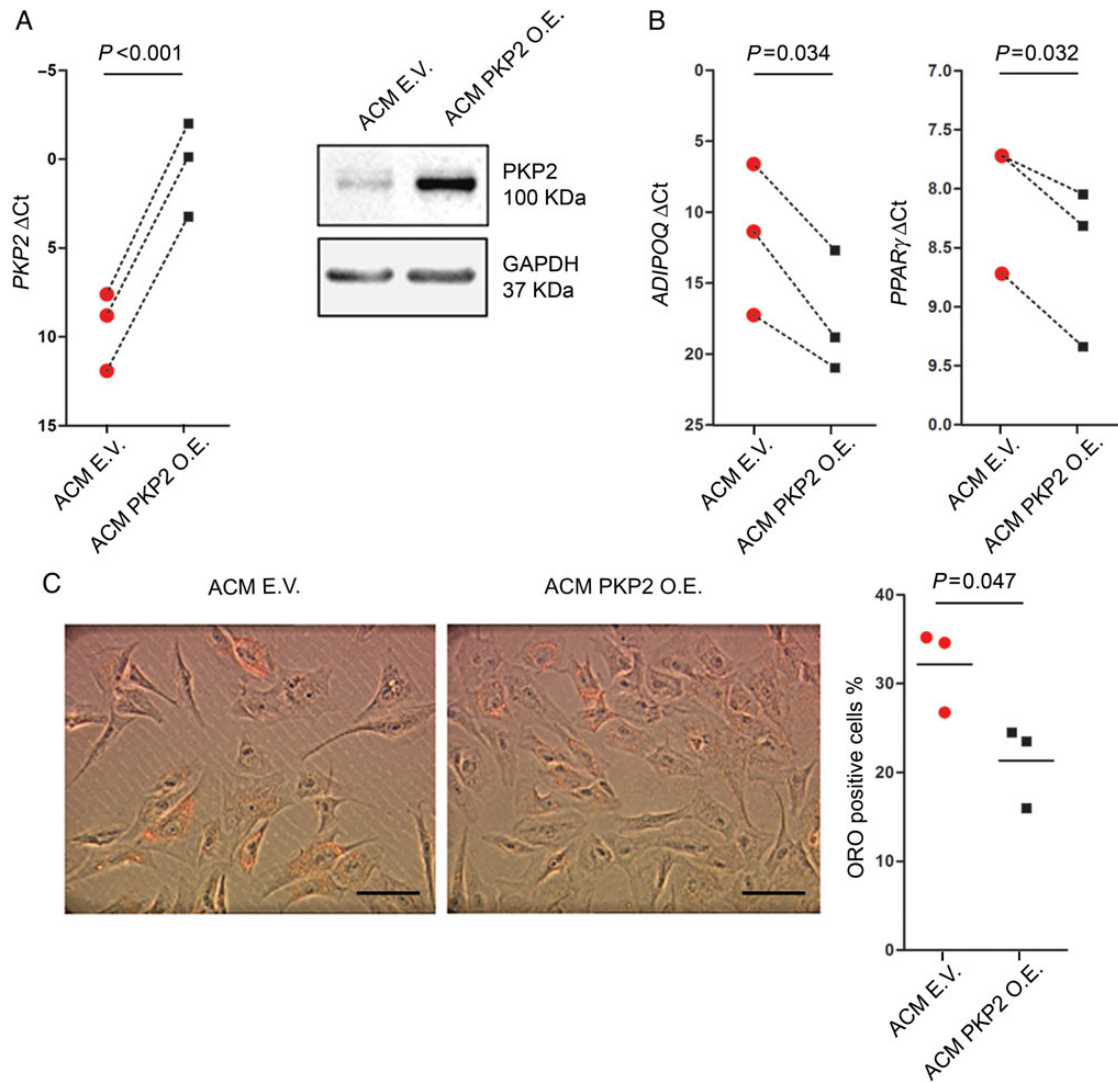
Plakoglobin predominant nuclear staining in cultured C-MSC is consistent with previous findings in other cell types,<sup>20,37</sup> even if this phenomenon is still controversial *in vivo*.<sup>43</sup> The partial rescue of the lipid accumulation phenotype in C-MSC treated with BIO is suggestive of *WNT* pathway involvement in ACM, although not to the exclusion of the contributions from other mechanisms.

Notably, C-MSC may be viewed as a novel cell platform for studying ACM *in vitro*. Different cellular models of disease pathogenesis have been previously proposed, mainly focused on the contractile component of the heart: *PKP2*-silenced cardiomyocytes,<sup>3,40</sup> murine *DSP*-deficient HL1 or mouse cardiomyocytes,<sup>19</sup> PG transgenic mouse *c-KIT/SCA1* cells,<sup>20</sup> and recently different lines of iPSC-

derived cardiomyocytes.<sup>22,23,37</sup> However, these models have specific intrinsic problems, including the lack of endogenous genetic mutation, the non-human cell origin, possible reprogramming biases, or unsuitability for high-throughput screenings. Mutated and control C-MSC are primary cells directly obtained from human ventricular tissue, easy to isolate and amplify, carrying the whole patient's genetic setting (ACM mutation and background). Therefore, we think that C-MSC are suitable tools for disease modelling.

Notwithstanding the relevance of substrate insults in generating or worsening the arrhythmic phenotype of ACM, recent reports highlight ACM as a primary electrical cardiac disease.<sup>2–4,6,44</sup> Although we have observed that in growth conditions *Cx43* expression levels and cellular localization (see Supplementary material online, Figure S8) are similar in ACM and NON-ACM C-MSC, future studies are needed to establish whether differentiating C-MSC can contribute to modulate cell survival/death, as well as functional properties of cardiomyocytes,<sup>45</sup> and of other cardiac cell types.

In conclusion, the present article reports unprecedented evidence that C-MSC are a source of adipocytes in ACM heart tissue and that ACM-derived primary C-MSC differentiate into adipocytes *in vitro*.



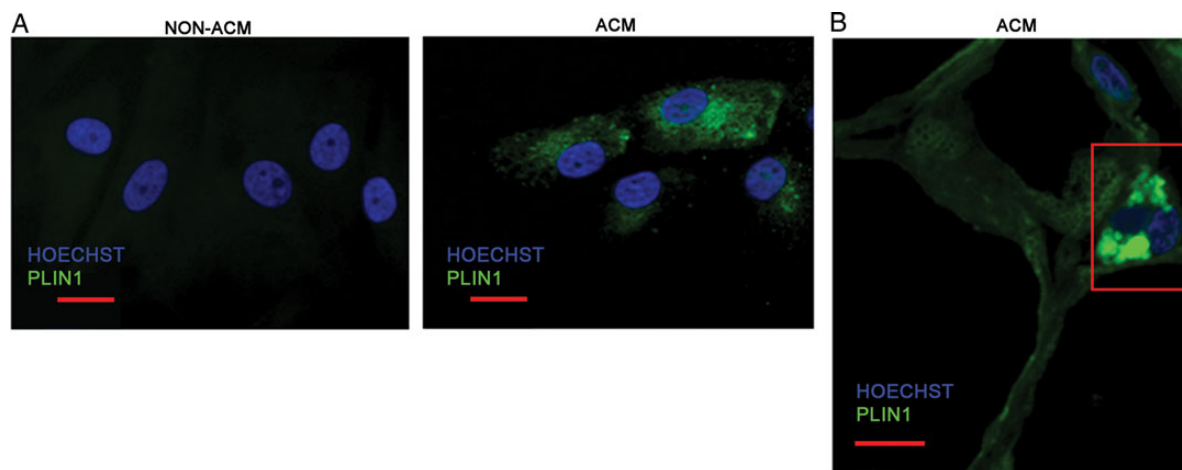
**Figure 7** Arrhythmogenic cardiomyopathy cardiac mesenchymal stromal cells lipid accumulation is dependent on the expression of PKP2. Arrhythmogenic cardiomyopathy cardiac mesenchymal stromal cells (ACM;  $n = 3$ ) were transfected with an empty vector (EV) or a vector over-expressing PKP2 (PKP2 OE). (A) Increased expression of *PKP2* gene (left graph) and PKP2 protein (right blot) in the PKP2 OE cells compared with mock-transfected cells, 72 h after transfection. (B) Comparison of transcript abundance between arrhythmogenic cardiomyopathy cardiac mesenchymal stromal cells transfected either with the empty or the PKP2 expression vector, after 72 h culture in adipogenic medium. (C) Representative Oil Red O (ORO) staining images of arrhythmogenic cardiomyopathy cardiac mesenchymal stromal cells transfected either with the empty or the PKP2 expression vector, cultured for 72 h in adipogenic medium. The graph shows the percentage of cells containing at least one lipid droplet. The scale bar indicates 50  $\mu$ m.

## Study limitations

The variability we observed among cells derived from different patients, both in lipid accumulation and in gene expression, may at least partially correlate with patient clinical presentation and genetic status. Though limited by the small sample size, an analysis of C-MSC ORO staining intensities stratified by genotype indicated that cells from *PKP2* mutation carriers have a higher predisposition to lipid accumulation than C-MSC from patients without mutations in known ACM-related genes ( $P = 0.058$ ). Further, all *PKP2* mutation carriers biopsies reached the major diagnostic criterion of substantial

fibro-fatty replacement of myocardium. These observations, if validated in studies with larger cohorts, may complete arrhythmic phenotype–genotype correlations reported by Bao and colleagues,<sup>46</sup> who demonstrated that mutation carriers (in particular of *PKP2*) are subject to spontaneous and induced VT more often than patients without mutations.

We obtained C-MSC only from *PKP2* mutation carriers or from patients with no mutations in known ACM-associated genes (Table 1). Therefore, our results need to be tested in patients with other desmosomal or non-desmosomal mutations.



**Figure 8** Cardiac mesenchymal stromal cells cultured in adipogenic medium show PLIN1 staining similar to differentiating cells in patients' hearts. (A) Immunostaining for PLIN1 of cells from patients not affected by arrhythmogenic cardiomyopathy (NON-ACM) and from arrhythmogenic cardiomyopathy patients (ACM), cultured in adipogenic medium for 72 h. The scale bar indicates 10  $\mu\text{m}$ . (B) Immunostaining for PLIN1 on FFPE sections of an arrhythmogenic cardiomyopathy (ACM) explanted heart. The scale bar indicates 20  $\mu\text{m}$ . Nuclei are stained with Hoechst 33258.

Not having access to LV bioptic samples of ACM patients, we were unable to explore possible differences in adipogenic propensity between the right and left ventricles.

## Supplementary material

Supplementary material is available at *European Heart Journal* online.

## Author contributions

E.S. and G.I.C.: performed statistical analysis; G.P. and C.T.: handled funding and supervision; E.S., S.B., C.C., E.G., V.M., A.D.R., F.M.F., V.C., G.P., M.C., I.S., E.C., N.O.A., and C.P.: acquired the data; E.S., G.P., M.C.C., and A.R.: conceived and designed the research; E.S., S.B., and C.C.: drafted the manuscript; M.C., A.P., G.d'A., G.I.C., A.R., M.C.C., C.T., and G.P.: made critical revision of the manuscript for key intellectual content.

## Acknowledgements

A special thanks to patients that gave consent to participate to this study. Our gratitude to Dr Spaltro, Dr Azzimato, Dr Perrucci, and Dr Rurali for technical assistance and to Dr Chen, Dr D'Alessandra, Dr Nigro, and Dr Gowran for critical revision of the manuscript and advice.

## Funding

This work has been supported by Centro Cardiologico Monzino IRCCS, Ricerca Corrente from Italian Ministry of Health; Fondazione Umberto Veronesi fellowship (Sommariva), Young Investigator Program; Boston Scientific fellowship (Sommariva); Department of Innovation, Research, Development and Cooperatives of the Autonomous Province of Bolzano-South Tyrol. Funding to pay the Open Access publication charges for this article was provided by Centro Cardiologico Monzino IRCCS, Ricerca Corrente from Italian Ministry of Health.

**Conflict of interest:** none declared.

## References

- Asimaki A, Kleber AG, Saffitz JE. Pathogenesis of arrhythmogenic cardiomyopathy. *Can J Cardiol* 2015. doi: 10.1016/j.cjca.2015.04.012.
- Cerrone M, Noorman M, Lin X, Chkourko H, Liang FX, van der Nagel R, Hund T, Birchmeier W, Mohler P, van Veen TA, van Rijen HV, Delmar M. Sodium current deficit and arrhythmogenesis in a murine model of plakophilin-2 haploinsufficiency. *Cardiovasc Res* 2012;**95**:460–468.
- Sato PY, Musa H, Coombs W, Guerrero-Serna G, Patino GA, Taffet SM, Isom LL, Delmar M. Loss of plakophilin-2 expression leads to decreased sodium current and slower conduction velocity in cultured cardiac myocytes. *Circ Res* 2009;**105**:523–526.
- Oxford EM, Everitt M, Coombs W, Fox PR, Kraus M, Gelzer AR, Saffitz J, Taffet SM, Moise NS, Delmar M. Molecular composition of the intercalated disc in a spontaneous canine animal model of arrhythmogenic right ventricular dysplasia/cardiomyopathy. *Heart Rhythm* 2007;**4**:1196–1205.
- Swope D, Cheng L, Gao E, Li J, Radice GL. Loss of cadherin-binding proteins beta-catenin and plakoglobin in the heart leads to gap junction remodeling and arrhythmogenesis. *Mol Cell Biol* 2012;**32**:1056–1067.
- Gomes J, Finlay M, Ahmed AK, Ciaccio EJ, Asimaki A, Saffitz JE, Quarta G, Nobles M, Syrris P, Chaubey S, McKenna WJ, Tinker A, Lambiase PD. Electrophysiological abnormalities precede overt structural changes in arrhythmogenic right ventricular cardiomyopathy due to mutations in desmoplakin-A combined murine and human study. *Eur Heart J* 2012;**33**:1942–1953.
- Norgett EE, Hatsell SJ, Carvajal-Huerta L, Cabezas JC, Common J, Purkis PE, Whittock N, Leigh IM, Stevens HP, Kelsell DP. Recessive mutation in desmoplakin disrupts desmoplakin-intermediate filament interactions and causes dilated cardiomyopathy, woolly hair and keratoderma. *Hum Mol Genet* 2000;**9**:2761–2766.
- McKoy G, Protonotarios N, Crosby A, Tsatsopoulou A, Anastasakis A, Coonar A, Norman M, Baboonian C, Jeffery S, McKenna WJ. Identification of a deletion in plakoglobin in arrhythmogenic right ventricular cardiomyopathy with palmoplantar keratoderma and woolly hair (Naxos disease). *Lancet* 2000;**355**:2119–2124.
- Gerull B, Heuser A, Wichter T, Paul M, Basson CT, McDermott DA, Lerman BB, Markowitz SM, Ellinor PT, MacRae CA, Peters S, Grossmann KS, Drenckhahn J, Michely B, Sasse-Klaassen S, Birchmeier W, Dietz R, Breithardt G, Schulze-Bahr E, Thierfelder L. Mutations in the desmosomal protein plakophilin-2 are common in arrhythmogenic right ventricular cardiomyopathy. *Nat Genet* 2004;**36**:1162–1164.
- Pilichou K, Nava A, Basso C, Boffagna G, Baucce B, Lorenzon A, Frigo G, Vettori A, Valente M, Towbin J, Thiene G, Danieli GA, Rampazzo A. Mutations in desmoglein-2 gene are associated with arrhythmogenic right ventricular cardiomyopathy. *Circulation* 2006;**113**:1171–1179.

11. Syrris P, Ward D, Evans A, Asimaki A, Gandjbakhch E, Sen-Chowdhry S, McKenna WJ. Arrhythmogenic right ventricular dysplasia/cardiomyopathy associated with mutations in the desmosomal gene desmocollin-2. *Am J Hum Genet* 2006;**79**:978–984.
12. Johnson JL, Najor NA, Green KJ. Desmosomes: regulators of cellular signaling and adhesion in epidermal health and disease. *Cold Spring Harb Perspect Med* 2014;**4**:a015297.
13. Lazzarini E, Jongbloed JD, Pilichou K, Thiene G, Basso C, Bikker H, Charbon B, Swertz M, van Tintelen JP, van der Zwaag PA. The ARVD/C genetic variants database: 2014 update. *Hum Mutat* 2015;**36**:403–410.
14. Chen X, Bonne S, Hatzfeld M, van Roy F, Green KJ. Protein binding and functional characterization of plakophilin 2. Evidence for its diverse roles in desmosomes and beta-catenin signaling. *J Biol Chem* 2002;**277**:10512–10522.
15. Cheng W, Li B, Kajstura J, Li P, Wolin MS, Sonnenblick EH, Hintze TH, Olivetti G, Anversa P. Stretch-induced programmed myocyte cell death. *J Clin Invest* 1995;**96**:2247–2259.
16. Li J, Swope D, Raess N, Cheng L, Muller EJ, Radice GL. Cardiac tissue-restricted deletion of plakoglobin results in progressive cardiomyopathy and activation of [beta]-catenin signaling. *Mol Cell Biol* 2011;**31**:1134–1144.
17. Chen SN, Gurha P, Lombardi R, Ruggiero A, Willerson JT, Marian AJ. The hippo pathway is activated and is a causal mechanism for adipogenesis in arrhythmogenic cardiomyopathy. *Circ Res* 2014;**114**:454–468.
18. Ross SE, Hemati N, Longo KA, Bennett CN, Lucas PC, Erickson RL, MacDougald OA. Inhibition of adipogenesis by Wnt signaling. *Science* 2000;**289**:950–953.
19. Garcia-Gras E, Lombardi R, Giocondo MJ, Willerson JT, Schneider MD, Khoury DS, Marian AJ. Suppression of canonical Wnt/beta-catenin signaling by nuclear plakoglobin recapitulates phenotype of arrhythmogenic right ventricular cardiomyopathy. *J Clin Invest* 2006;**116**:2012–2021.
20. Lombardi R, da Graca Cabreira-Hansen M, Bell A, Fromm RR, Willerson JT, Marian AJ. Nuclear plakoglobin is essential for differentiation of cardiac progenitor cells to adipocytes in arrhythmogenic right ventricular cardiomyopathy. *Circ Res* 2011;**109**:1342–1353.
21. d'Amati G, di Gioia CR, Giordano C, Gallo P. Myocyte transdifferentiation: a possible pathogenetic mechanism for arrhythmogenic right ventricular cardiomyopathy. *Arch Pathol Lab Med* 2000;**124**:287–290.
22. Ma D, Wei H, Lu J, Ho S, Zhang G, Sun X, Oh Y, Tan SH, Ng ML, Shim W, Wong P, Liew R. Generation of patient-specific induced pluripotent stem cell-derived cardiomyocytes as a cellular model of arrhythmogenic right ventricular cardiomyopathy. *Eur Heart J* 2013;**34**:122–133.
23. Caspi O, Huber I, Gepstein A, Arbel G, Maizels L, Boulous M, Gepstein L. Modeling of arrhythmogenic right ventricular cardiomyopathy with human induced pluripotent stem cells. *Circ Cardiovasc Genet* 2013;**6**:557–568.
24. Lombardi R, Dong J, Rodriguez G, Bell A, Leung TK, Schwartz RJ, Willerson JT, Brugada R, Marian AJ. Genetic fate mapping identifies second heart field progenitor cells as a source of adipocytes in arrhythmogenic right ventricular cardiomyopathy. *Circ Res* 2009;**104**:1076–1084.
25. Pilichou K, Bezzina CR, Thiene G, Basso C. Arrhythmogenic cardiomyopathy: transgenic animal models provide novel insights into disease pathobiology. *Circ Cardiovasc Genet* 2011;**4**:318–326.
26. da Silva Meirelles L, Chagastelles PC, Nardi NB. Mesenchymal stem cells reside in virtually all post-natal organs and tissues. *J Cell Sci* 2006;**119**:2204–2213.
27. Rossini A, Frati C, Lagrasta C, Graiani G, Scopece A, Cavalli S, Musso E, Baccarin M, Di Segni M, Fagnoni F, Germani A, Quaini E, Mayr M, Xu Q, Barbuti A, DiFrancesco D, Pompilio G, Quaini F, Gaetano C, Capogrossi MC. Human cardiac and bone marrow stromal cells exhibit distinctive properties related to their origin. *Cardiovasc Res* 2010;**89**:650–660.
28. Jugdutt BL. Ventricular remodeling after infarction and the extracellular collagen matrix: when is enough enough? *Circulation* 2003;**108**:1395–1403.
29. Brown RD, Ambler SK, Mitchell MD, Long CS. The cardiac fibroblast: therapeutic target in myocardial remodeling and failure. *Annu Rev Pharmacol Toxicol* 2005;**45**:657–687.
30. Pino AM, Rosen CJ, Rodriguez JP. In osteoporosis, differentiation of mesenchymal stem cells (MSCs) improves bone marrow adipogenesis. *Biol Res* 2012;**45**:279–287.
31. Gambini E, Pesce M, Persico L, Bassetti B, Gambini A, Alamanni F, Agrifoglio M, Capogrossi MC, Pompilio G. Patient profile modulates cardiac c-kit(+) progenitor cell availability and amplification potential. *Transl Res* 2012;**160**:363–373.
32. Sun Z, Gong J, Wu H, Xu W, Wu L, Xu D, Gao J, Wu JW, Yang H, Yang M, Li P. Perilipin1 promotes unilocular lipid droplet formation through the activation of Fsp27 in adipocytes. *Nat Commun* 2013;**4**:1594.
33. Marcus FI, McKenna WJ, Sherrill D, Basso C, Bauce B, Bluemke DA, Calkins H, Corrado D, Cox MG, Daubert JP, Fontaine G, Gear K, Hauer R, Nava A, Picard MH, Protonotarios N, Saffitz JE, Sanborn DM, Steinberg JS, Tandri H, Thiene G, Towbin JA, Tsatsopoulou A, Wichter T, Zareba W. Diagnosis of arrhythmogenic right ventricular cardiomyopathy/dysplasia: proposed modification of the Task Force Criteria. *Eur Heart J* 2010;**31**:806–814.
34. Luo Q, Kang Q, Si W, Jiang W, Park JK, Peng Y, Li X, Luu HH, Luo J, Montag AG, Haydon RC, He TC. Connective tissue growth factor (CTGF) is regulated by Wnt and bone morphogenetic proteins signaling in osteoblast differentiation of mesenchymal stem cells. *J Biol Chem* 2004;**279**:55958–55968.
35. Matthes SA, Taffet S, Delmar M. Plakophilin-2 and the migration, differentiation and transformation of cells derived from the epicardium of neonatal rat hearts. *Cell Commun Adhes* 2011;**18**:73–84.
36. Delva E, Tucker DK, Kowalczyk AP. The desmosome. *Cold Spring Harb Perspect Biol* 2009;**1**:a002543.
37. Kim C, Wong J, Wen J, Wang S, Wang C, Spiering S, Kan NG, Forcales S, Puri PL, Leone TC, Marine JE, Calkins H, Kelly DP, Judge DP, Chen HS. Studying arrhythmogenic right ventricular dysplasia with patient-specific iPSCs. *Nature* 2013;**494**:105–110.
38. Robertson C, Tran DD, George SC. Concise review: maturation phases of human pluripotent stem cell-derived cardiomyocytes. *Stem Cells* 2013;**31**:829–837.
39. Djouadi F, Lecarpentier Y, Hebert JL, Charron P, Bastin J, Coirault C. A potential link between peroxisome proliferator-activated receptor signalling and the pathogenesis of arrhythmogenic right ventricular cardiomyopathy. *Cardiovasc Res* 2009;**84**:83–90.
40. Oxford EM, Musa H, Maass K, Coombs W, Taffet SM, Delmar M. Connexin43 remodeling caused by inhibition of plakophilin-2 expression in cardiac cells. *Circ Res* 2007;**101**:703–711.
41. Fishman MC, Chien KR. Fashioning the vertebrate heart: earliest embryonic decisions. *Development* 1997;**124**:2099–2117.
42. Gambini E, Pompilio G, Biondi A, Alamanni F, Capogrossi MC, Agrifoglio M, Pesce M. C-kit+ cardiac progenitors exhibit mesenchymal markers and preferential cardiovascular commitment. *Cardiovasc Res* 2010;**89**:362–373.
43. Zhang Z, Stroud MJ, Zhang J, Fang X, Ouyang K, Kimura K, Mu Y, Dalton ND, Gu Y, Bradford WH, Peterson KL, Cheng H, Zhou X, Chen J. Normalization of Naxos plakoglobin levels restores cardiac function in mice. *J Clin Invest* 2015;**125**:1708–1712.
44. Noorman M, Hakim S, Kessler E, Groeneweg J, Cox MG, Asimaki A, van Rijen HV, van Stuijvenberg L, Chkourko H, van der Heyden MA, Vos MA, de Jonge N, van der Smagt JJ, Dooijes D, Vink A, de Weger RA, Varro A, de Bakker JM, Saffitz JE, Hund TJ, Mohler PJ, Delmar M, Hauer RN, van Veen TA. Remodeling of the cardiac sodium channel, connexin 43, and plakoglobin at the intercalated disk in patients with arrhythmogenic cardiomyopathy. *Heart Rhythm* 2013;**10**:412–419.
45. Lamounier-Zepter V, Look C, Schunck WH, Schlottmann I, Woischwill C, Bornstein SR, Xu A, Morano I. Interaction of epoxyeicosatrienoic acids and adipocyte fatty acid-binding protein in the modulation of cardiomyocyte contractility. *Int J Obes (Lond)* 2015;**39**:755–761.
46. Bao J, Wang J, Yao Y, Wang Y, Fan X, Sun K, He DS, Marcus FI, Zhang S, Hui R, Song L. Correlation of ventricular arrhythmias with genotype in arrhythmogenic right ventricular cardiomyopathy. *Circ Cardiovasc Genet* 2013;**6**:552–556.