

# Innate and adaptive T cells in asthmatic patients: Relationship to severity and disease mechanisms

Timothy S. C. Hinks, MD,<sup>a,b</sup> Xiaoying Zhou, PhD,<sup>a</sup> Karl J. Staples, PhD,<sup>a</sup> Borislav D. Dimitrov, MD,<sup>b,c</sup> Alexander Manta, PhD,<sup>d</sup> Tanya Petrossian, PhD,<sup>e</sup> Pek Y. Lum, PhD,<sup>e</sup> Caroline G. Smith, RN,<sup>c</sup> Jon A. Ward, BSc,<sup>a,b</sup> Peter H. Howarth, MD,<sup>a,b</sup> Andrew F. Walls, PhD,<sup>a</sup> Stephan D. Gadola, MD,<sup>a,f</sup> and Ratko Djukanović, MD<sup>a,b</sup> Southampton, United Kingdom, Geretsried, Germany, Palo Alto, Calif, and Basel, Switzerland

**Background:** Asthma is a chronic inflammatory disease involving diverse cells and mediators whose interconnectivity and relationships to asthma severity are unclear.

**Objective:** We performed a comprehensive assessment of T<sub>H</sub>17 cells, regulatory T cells, mucosal-associated invariant T (MAIT) cells, other T-cell subsets, and granulocyte mediators in asthmatic patients.

**Methods:** Sixty patients with mild-to-severe asthma and 24 control subjects underwent detailed clinical assessment and provided induced sputum, endobronchial biopsy, bronchoalveolar lavage, and blood samples. Adaptive and invariant T-cell subsets, cytokines, mast cells, and basophil mediators were analyzed.

**Results:** Significant heterogeneity of T-cell phenotypes was observed, with levels of IL-13-secreting T cells and type 2 cytokines increased at some, but not all, asthma severities. T<sub>H</sub>17 cells and  $\gamma\delta$ -17 cells, proposed drivers of neutrophilic inflammation, were not strongly associated with asthma, even in

severe neutrophilic forms. MAIT cell frequencies were strikingly reduced in both blood and lung tissue in relation to corticosteroid therapy and vitamin D levels, especially in patients with severe asthma in whom bronchoalveolar lavage regulatory T-cell numbers were also reduced. Bayesian network analysis identified complex relationships between pathobiologic and clinical parameters. Topological data analysis identified 6 novel clusters that are associated with diverse underlying disease mechanisms, with increased mast cell mediator levels in patients with severe asthma both in its atopic (type 2 cytokine-high) and nonatopic forms.

**Conclusion:** The evidence for a role for T<sub>H</sub>17 cells in patients with severe asthma is limited. Severe asthma is associated with a striking deficiency of MAIT cells and high mast cell mediator levels. This study provides proof of concept for disease mechanistic networks in asthmatic patients with clusters that could inform the development of new therapies. (*J Allergy Clin Immunol* 2015;136:323-33.)

**Key words:** Asthma, T lymphocytes, cytokines, mast cells, phenotype, endotype, regulatory T, T<sub>H</sub>17, T<sub>H</sub>2, mucosal-associated invariant T-cell

From <sup>a</sup>Clinical and Experimental Sciences, University of Southampton Faculty of Medicine, Sir Henry Wellcome Laboratories, <sup>b</sup>the NIHR Southampton Respiratory Biomedical Research Unit, and <sup>c</sup>Primary Care and Population Sciences, University of Southampton Faculty of Medicine, Southampton University Hospital; <sup>d</sup>MantaMatics UG, Geretsried; <sup>e</sup>Ayasdi, Palo Alto; and <sup>f</sup>the Novartis Institute of Biomedical Research, Novartis, Basel.

Supported by a Wellcome Trust Clinical Research Fellowship (088365/z/09/z; to T.S.C.H.). Infrastructure support was funded by the NIHR Southampton Respiratory Biomedical Research Unit. X.Z. was supported by the Medical Research Council (G0500729), Asthma UK (06/026), and the Foundation for the Study of Infant Death (254). K.J.S. was supported by a project grant from Asthma UK (08/026). We acknowledge the support of the National Institute for Health Research through the Primary Care Research Network and through an Academic Clinical Fellowship awarded (to T.S.C.H.).

Disclosure of potential conflict of interest: X. Zhou has received funding from Novartis and holds patents EP 1982191 and USPA 12/161409. K. J. Staples has received funding from Asthma UK and GSK Bio, as well as personal fees from Novartis. A. Manta is employed part-time by Roche, which has received funding from MantaMatics UG. T. Petrossian has received stock options from Ayasdi. P. Y. Lum has received stock options from Ayasdi. P. H. Howarth has received funding from the Medical Research Council. A. F. Walls has received funding from Thermo Fisher and Novartis and receives money from patents EP 1982191 and USPA 12/161409. S. Gadola is employed by Novartis. R. Djukanović holds stock in Synairgen and has received consultancy fees from TEVA Pharmaceuticals, payment for delivering lectures from Novartis, and compensation for travel and other meeting-related expenses from Boehringer Ingelheim. The rest of the authors declare that they have no relevant conflicts of interest.

Received for publication June 24, 2014; revised January 12, 2015; accepted for publication January 16, 2015.

Available online March 5, 2015.

Corresponding author: Ratko Djukanović, MD, Clinical and Experimental Sciences, University of Southampton Faculty of Medicine, Sir Henry Wellcome Laboratories, Southampton University Hospital, Southampton SO16 6YD, United Kingdom. E-mail: r.djukanovic@soton.ac.uk.

0091-6749

© 2015 The Authors. Published by Elsevier Inc. on behalf of the American Academy of Allergy, Asthma & Immunology. This is an open access article under the CC BY license (<http://creativecommons.org/licenses/by/4.0/>).

<http://dx.doi.org/10.1016/j.jaci.2015.01.014>

Asthma is characterized by airways inflammation and remodeling. Based on initial studies in animal models<sup>1</sup> and human T-cell clones<sup>2</sup> and bronchoscopic studies in patients with mild steroid-naïve asthma,<sup>3,4</sup> it has been viewed as a disease driven by activated T<sub>H</sub>2 cells producing the type 2 interleukins IL-4, IL-5, and IL-13. These cytokines are believed to orchestrate the functions of mast cells,<sup>5,6</sup> eosinophils,<sup>7</sup> and IgE-producing B cells/plasma cells. This concept has been challenged with increasing recognition of considerable heterogeneity of asthma mechanisms and definable patient subpopulations associated with immunopathology that cannot be explained by T<sub>H</sub>2 inflammation alone.<sup>8-11</sup> Discoveries of novel T-cell subsets, notably anti-inflammatory regulatory T (Treg) cells<sup>12,13</sup> and proinflammatory IL-17-secreting (T<sub>H</sub>17)<sup>14</sup> and invariant natural killer<sup>15</sup> T cells, which are implicated in asthma pathogenesis on the basis of studies in animal models and limited evidence in human asthma, have added complexity to our understanding of immunoregulation. Recent studies have revived interest in mast cells,<sup>6,16</sup> a subject of intense research in the 1980s and early 1990s but not widely seen as candidate targets, possibly because of limited evidence of their role in severe disease.<sup>6,17,18</sup>

Most studies of asthma pathobiology to date have focused on individual or limited numbers of inflammatory cell types, making it difficult to appreciate the cell-cell interactions within complex networks that characterize inflammatory diseases, such as asthma. Therefore we have undertaken a comprehensive assessment of bronchial and circulating T cells, including

**Abbreviations used**

ACQ: Asthma Control Questionnaire
BAL: Bronchoalveolar lavage
BNA: Bayesian network analysis
eNO: Exhaled nitric oxide
FOXP3: Forkhead box protein 3
GINA: Global Initiative for Asthma
ICS: Inhaled corticosteroid
IQR: Interquartile range
MAIT: Mucosal-associated invariant T
Tc: Cytotoxic T
TDA: Topological data analysis
Treg: Regulatory T

mucosal-associated invariant T (MAIT)<sup>19</sup> cells, a novel cell type not yet studied in patients with asthma or other chronic lung diseases, and relevant  $T_H2/T_H1/T_H17$  cytokines, as well as mediators released in the lungs by mast cells and basophils. We have combined these pathobiologic findings with standard clinical parameters used to define asthma severity<sup>20</sup> and interrogated the rich multidimensional clinicopathobiologic data set using the novel techniques of the machine learning approach (ie, Bayesian network analysis [BNA] and topological data analysis [TDA]).<sup>21,22</sup> This enabled an in-depth investigation of the roles of individual cell types in relation to asthma severity, characterization of the complex interconnectivity between the diverse clinical and pathobiologic parameters, and identification of clinicopathobiologic clusters that could point to novel asthma endotypes.

**METHODS****Participants**

Eighty-four participants (18-70 years) were enrolled from the Wessex Severe Asthma Cohort, NIHR Southampton Respiratory Biomedical Research Unit, and outpatient clinics at University Hospital Southampton: 24 healthy nonatopic participants, 15 patients with mild asthma receiving  $\beta_2$ -agonists alone, 23 patients with moderate asthma receiving inhaled corticosteroids (ICSs), and 22 patients with severe asthma with persistent symptoms despite high-dose ICSs (n = 16) and oral corticosteroids (n = 6, Table I and see Fig E1 in this article's Online Repository at [www.jacionline.org](http://www.jacionline.org)) classified on enrollment according to previously used criteria (see Table E1 in this article's Online Repository at [www.jacionline.org](http://www.jacionline.org)).<sup>15</sup> One hundred seven participants were consented to achieve an approximate minimum group size of 15, according to the physician's assessment of severity at enrollment, which was estimated to provide 80% power at the .05 significance level to detect differences in the primary outcomes of  $T_H17$  and MAIT cell frequencies in each tissue compartment after loss of missing data.

**Study procedures**

Participants were assessed based on history, examination results, skin prick test responses to common aeroallergens, spirometric results, exhaled nitric oxide (eNO) levels, serum IgE levels, and (except for patients with severe asthma) methacholine responsiveness. Lung samples were obtained by means of sputum induction,<sup>23</sup> bronchoalveolar lavage (BAL), and endobronchial biopsy.<sup>15,17</sup> By using flow cytometry, the following T-cell subsets were characterized by their surface markers and intracellular cytokines<sup>15</sup> in the circulation (blood) and lungs (sputum and BAL cell pellets; cells from collagenase-dispersed endobronchial biopsy specimens were used to provide bronchial mucosal cells):  $T_H17$ -cells,  $T_H1$ -cells, and IL-13-secreting- $T_H2$  cells;  $CD3^+CD4^+$  (or  $CD8^-$ ) forkhead box protein 3 (FOXP3)<sup>+</sup> Treg cells;

cytotoxic T (Tc) cells ( $T_C1$  and  $T_C2$ );  $\gamma\delta$ -17 T cells; and MAIT cells. Like other authors,<sup>24</sup> we could not detect with confidence IL-4- or IL-5-secreting T cells using intracellular cytokine staining. Levels of type 1 (IFN- $\gamma$ , IL-2, and IL-12p70) and type 2 (IL-4, IL-5, and IL-13) cytokines, IL-10, IL-17A, mast cell proteases, and basophil-derived basogranulin were measured in serum, sputum, and BAL fluid by using standard methods (for details, see the Methods section, Table E2 and Fig E2 in this article's Online Repository at [www.jacionline.org](http://www.jacionline.org)).

The study was approved by the Southampton and South West Hampshire Research Ethics Committee B. All participants provided informed consent.

**Statistical analysis**

Data were first analyzed by using standard statistical methods, classifying subjects as healthy or having mild, moderate, or severe asthma as defined above and in the Methods section in this article's Online Repository.<sup>15</sup> BNA was then applied to all the pathobiologic and clinical features to seek association in relation to asthma severity. Finally, TDA was applied to the same data to create a network of distinct clinicopathobiologic clusters.

**Data elaboration and standard statistics**

Data distribution was tested by using the Shapiro-Wilk test, and data were logarithmically transformed if they were not normally distributed. For all analyses, 2-tailed *P* values of less than .05 were considered significant. Data were compared between the healthy and control groups (Mann-Whitney *U* or Student *t* tests) and between each asthma severity group and the control subjects (Kruskal-Wallis test or ANOVA), depending on the distribution of the data. For the latter, an overall 5% significance level was adjusted for multiple comparisons by using the Bonferroni method. Groups ranked according to disease severity were tested for linear trend by using polynomial contrasts (or the Jonckheere-Terpstra test, if not normally distributed). Data are expressed as medians with interquartile ranges (IQRs) unless stated otherwise. Correlations were tested by using the Spearman *r* coefficient. Kolmogorov-Smirnov tests identified significant differences between distributions within a single cluster. Data were analyzed with Prism 6.0 (GraphPad Software, San Diego, Calif) and SPSS 21.0 (IBM, Armonk, NY) software.

**Network analyses**

For network analyses (BNA and TDA), data were used from 62 participants with the most complete data. Missing data were imputed by using average values specific to each tissue and disease severity subgroup. A composite value was generated for each parameter by using a weighted average across each compartment: sputum and BAL fluid for concentrations of soluble mediators and blood, sputum, BAL fluid, and biopsy specimens for cell counts, providing airway and tissue composite readouts, respectively, with a matrix of 62 participants and 26 pathobiologic and 26 clinical parameters (see the Methods section and Tables E2 and E3 in this article's Online Repository at [www.jacionline.org](http://www.jacionline.org) for definitions of terms). Interconnectivity between clinical and pathobiologic parameters was first explored with BNA (Genie 2.0; Decision Systems Laboratory, Pittsburgh, Pa). Data were discretized to describe nonlinear correlations into 2 bins for binary variables or 5 to 9 bins for continuous variables.

**TDA**

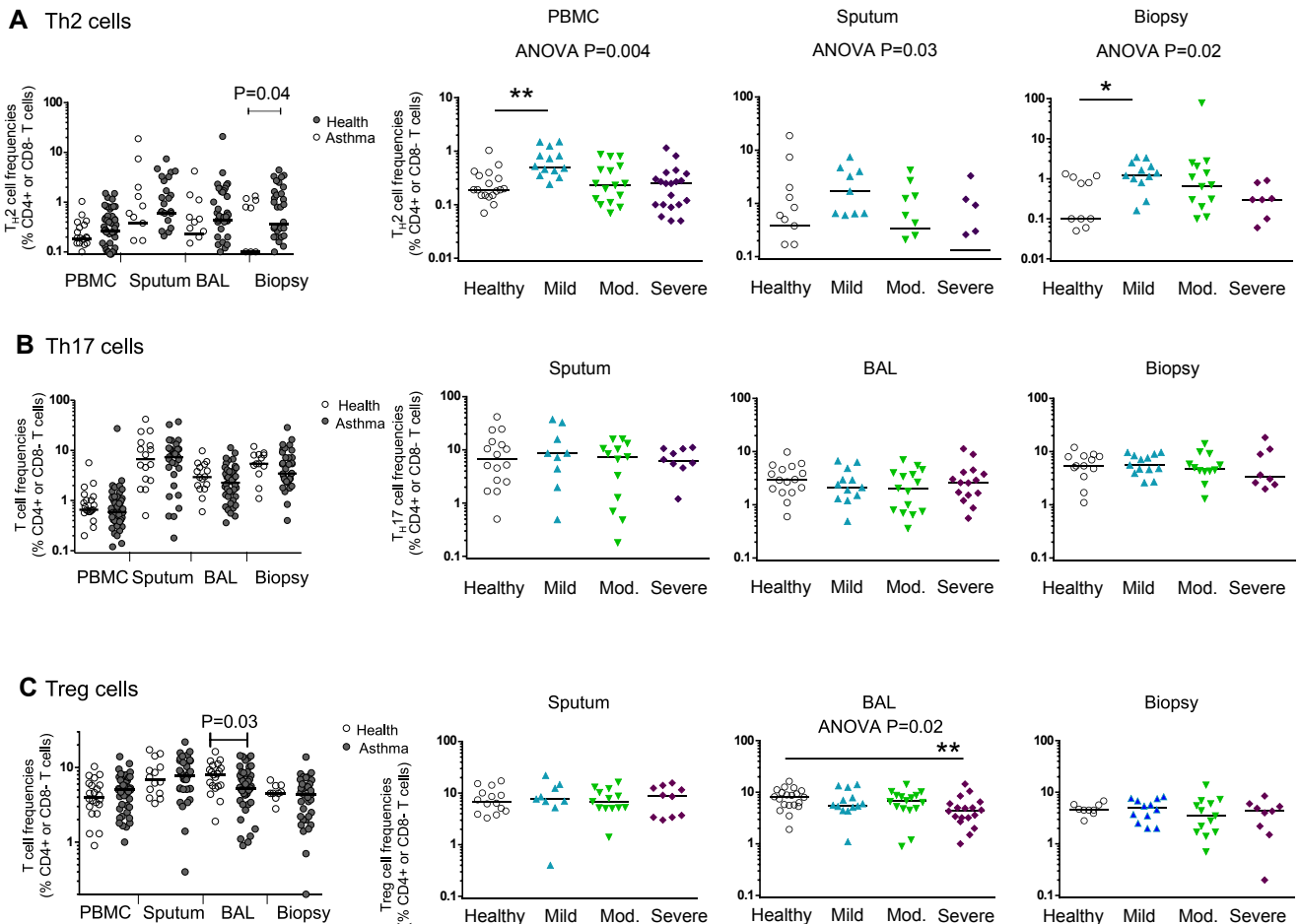
To use the full range of available clinical and pathobiologic data simultaneously to identify multidimensional features within the data set, which might not be apparent with traditional methods, we used the novel technique of TDA, which is particularly suited to complex biological data sets. This approach represents a high dimensional data set as a structured 3-dimensional network in which each "node" comprises subjects similar to each other in multiple dimensions. Lines or "edges" are drawn between nodes that contain shared data points. Statistical tests can then be performed on groups or features that emerge from the inherent structure of the data set. This method combines features of standard clustering methodologies and

**TABLE I.** Clinical characteristics of participants

Parameters	Healthy control subjects	Patients with mild asthma	Patients with moderate asthma	Patients with severe asthma
No.	24	15	23	22
Demographics				
Sex (M/F), no. (%)	14 (58)/10 (42)	8 (53)/7 (47)	10 (43)/13 (57)	8 (36)/14 (64)
Age (y), median (range)	28 (20-65)	26 (21-64)	36 (21-56)	53 (23-67)
Pulmonary function				
FEV <sub>1</sub> (% predicted)	108 (105-113)	88 (86-103)	99 (86-107)	65 (49-82)
FEV <sub>1</sub> reversibility (%)	3.3 (1.8-7.4)	13 (11-19)	10 (2.2-17)	13 (2.6-25)
PEFR (% predicted)	108 (97-116)	98 (89-107)	95 (85-100)	70 (53-82)
PEFR variability (%)	0 (0-11)	17 (10-25)	22 (17-32)	17 (12-24)
PD <sub>20</sub> (mg methacholine)	Negative	0.19 (0.050-0.79)	0.25 (0.063-0.73)	Not done
eNO (ppb [at 50 L/s])	16 (11-21)	53 (27-107)	26 (15-51)	20 (13-38)
Clinical				
Atopy (positive skin test result, Y/N), no. (%)	0 (0)/24 (100)	15 (100)/0 (0)	20 (87)/3 (13)	15 (68)/7 (32)
No. of positive skin test results to allergens	0 (NA)	6 (4-7)	3 (2-5)	3.5 (0-5.3)
Peripheral eosinophil count (10 <sup>9</sup> /L)	0.1 (0.1-0.2)	0.2 (0.1-0.6)	0.2 (0.15-0.3)	0.2 (0.1-0.3)
Total IgE (IU/mL)	26 (10-61)	172 (21-451)	105 (35-188)	84 (31-669)
Body mass index (kg/m <sup>2</sup> )	24.4 (22.5-28.1)	23.6 (22.7-26.5)	25.3 (23.3-30.9)	31.0 (27.1-40.9)
Smoking status				
Never smoker, no. (%)	21 (88)	14 (93)	19 (83)	17 (77)
Former smoker, no. (%) [mean pack-years]	3 (13 [4.2])	1 (7 [6.7])	4 (17 [5.8])	4 (18 [26])
Current smoker, no. (%) [mean pack-years]	0 (0)	0 (0)	0 (0)	1 (5 [49])
Duration of asthma (y)	NA	18 (15-26)	22 (9-27)	36 (21-49)
ACQ score	NA	0.60 (0.43-1.3)	1.0 (0.60-1.4)	2.8 (2.2-3.5)
GINA level of control, no. (%)				
Controlled	NA	8 (53)	5 (22)	0 (0)
Partly controlled	NA	6 (40)	15 (65)	2 (9.5)
Uncontrolled	NA	1 (6.7)	3 (13)	19 (90)
Treatment				
Inhaled steroids	No	No	Yes	Yes
Dose (equivalent μg BDP)	NA	NA	400 (200-400)	1600 (1280-2000)
Maintenance oral corticosteroids (Y/N), no. (%)	No	No	No	6 (27)/16 (73)
Mean dose if taken (mg prednisolone/d)				11
Short-acting β-agonist (Y/N), no. (%)	No	Yes	Yes	Yes
Long-acting β-agonist (Y/N), no. (%)	No	No	10 (43)/13 (57)	22 (100)/0 (0)
Leukotriene receptor antagonist (Y/N), no. (%)	No	No	1 (4)/22 (96)	15 (68)/7 (32)
Step on GINA treatment algorithm	NA	1	2-3	4-5
Inflammatory subtype, no. (%)				
Total with valid data	16	13	18	21
Neutrophilic	4 (25)	2 (15)	2 (11)	10 (48)
Eosinophilic	1 (6.3)	3 (23)	3 (17)	6 (29)
Mixed granulocytic	0 (0)	0 (0)	0 (0)	1 (4.8)
Paucigranulocytic	11 (69)	8 (62)	13 (72)	4 (19)
Sputum cell differential (%)				
Macrophages	52 (31-66)	49 (35-64)	47 (30-62)	30 (19-43)
Neutrophils	31 (11-65)	34 (22-54)	33 (16-56)	61 (32-76)
Epithelial	3.6 (2.0-24)	4.3 (1.7-10)	4.1 (1.1-21)	2.9 (0-7.8)
Eosinophils	0.38 (0-0.94)	1.5 (0.75-1.8)	0.75 (0.25-1.5)	0.69 (0-6.1)
Lymphocytes	0.1 (0-0.75)	0.3 (0-0.75)	0 (0-0.68)	0.0 (0-0.25)
BAL cell differential (%)				
Macrophages	84 (74-89)	70 (60-80)	81 (73-89)	72 (46-94)
Neutrophils	2.5 (1.0-5.9)	2.5 (1.6-4.8)	3.5 (1.8-6.4)	6.5 (1.4-29)
Epithelial cells	9.9 (3.9-18)	21 (13-35)	11 (5.6-19)	8.7 (3.3-11)
Eosinophils	0.25 (0.0-0.56)	2.0 (0.75-3.6)	1.0 (0-3.0)	0.1 (0-1.6)
Lymphocytes	1.4 (0.94-2.4)	1.5 (0.38-3.0)	1.3 (0.5-2.3)	1 (0-1.6)
Relevant comorbidities, no. (%)				
Allergic rhinitis	0 (0)	12 (80)	11 (58)	10 (46)
Nasal polyps	0 (0)	0 (0)	1 (5.3)	5 (23)
Eczema	3 (13)	7 (47)	6 (32)	4 (19)
Bronchiectasis	0 (0)	0 (0)	1 (5.3)	1 (4.5)

Values are medians with IQRs, unless stated otherwise. The inflammatory subtype is based on sputum differentials using the following cut points: neutrophilic, >61%; eosinophilic, >3%. Percentages given are derived from subjects with valid data.

BDP, Beclomethasone dipropionate; NA, not available; PEFR, peak expiratory flow rate.



**FIG 1.** Frequencies of  $CD3^+CD4^+$  T cells expressing IL-13 ( $T_H2$  cells; **A**), IL-17 ( $T_H17$  cells; **B**), and FOXP3 (Treg cells; **C**) in PBMCs, sputum, BAL fluid, and bronchial biopsy specimens as a percentage of live  $CD3^+CD4^+$  T cells or, for endobronchial biopsy specimens, a percentage of  $CD3^+CD8^-$  T cells. Horizontal lines show medians. Left columns, Healthy control subjects versus asthmatic patients with Mann-Whitney  $U$   $P$  values. Right 3 columns, Stratified by disease severity with Kruskal-Wallis  $P$  values ( $P < .05$ ). \* $P < .05$  and \*\* $P < .01$ , post hoc Dunn test compared with healthy subjects.

also provides a geometric representation of the data.<sup>21,22</sup> In contrast to most other techniques that depend on prior hypotheses and that focus on pairwise relationships within the data,<sup>25</sup> this geometric visualization allows recognition of multidimensional features (patterns) within the data in a less supervised, data-driven manner to identify meaningful subgroups that become apparent (self-define themselves) on visualization (please see the TDA plots). In addition, TDA does not require an *a priori* definition of the number of clusters anticipated.

TDA was performed, as previously described,<sup>21</sup> with IRIS 2.0 software (Ayasdi, Palo Alto, Calif), constructing networks with parameters from Table E3. Three inputs were used: a distance metric, 1 or more filter functions, and 2 resolution parameters (“resolution” and “percent overlap” or “gain”). A network of nodes with edges between them was created by using a force-directed algorithm. The nodes represent bins or “microclusters” of data points, and 2 nodes are connected if their corresponding collections of data points have a point in common.<sup>21</sup> Variance-normalized Euclidean distance was used as a distance metric, with 2 filter functions: principal and secondary metric singular value decomposition (for further explanation, see the Methods section in this article’s Online Repository). Resolution and gain settings were selected where the network structure permits identification of subgroups. Kolmogorov-Smirnov tests identified parameters that differentiate each subgroup from the rest of the structure and create clusters. Comparisons between multiple clusters used 1-way ANOVA, with *post hoc* tests with the Bonferroni correction.

For additional methods used, see the Methods section in this article’s Online Repository.

## RESULTS

Data were first analyzed by using standard statistical methods without imputation or composite averages, classifying subjects as healthy or as having mild, moderate, or severe asthma (see Table E1 and the Results section in this article’s Online Repository at [www.jacionline.org](http://www.jacionline.org)). Previous observations that mild steroid-naive asthma is characterized by a bias toward type 2 inflammation were confirmed, with increased numbers of IL-13-secreting  $CD4^+$  ( $T_H2$ ) cells in sputum, BAL fluid, and endobronchial biopsy specimens from patients with mild asthma (Fig 1, A) and ratios of IL-13- to IFN- $\gamma$ -secreting  $CD4^+$  ( $T_H1$ ) cells (see Fig E3 in this article’s Online Repository at [www.jacionline.org](http://www.jacionline.org)). However, this bias was not seen in patients with severe asthma, in whom frequencies of IL-13-secreting  $T_H2$  cells were not significantly different from those in healthy subjects, although we did not measure frequencies of IL-4- or IL-5-secreting T cells. Similarly, in patients with mild asthma, there were significant increases in median concentrations of the type 2 cytokines IL-5 (median,



0.13 pg/mL; IQR, 0.05-0.19 pg/mL) compared with those in healthy subjects (0.003 pg/mL; IQR, 0.001-0.006 pg/mL;  $P < .001$ ) and IL-13 (0.009 pg/mL; IQR, 0.0009-0.026 pg/mL) compared with those in healthy subjects (0 pg/mL [IQR, 0-0.0008 pg/mL];  $P < .05$ ) in BAL fluid (see Fig E4 in this article's Online Repository at [www.jacionline.org](http://www.jacionline.org)). In sputum neither IL-5 nor IL-13 levels were increased in patients with mild or moderate asthma. In patients with severe asthma, IL-5 levels were also significantly increased in both BAL fluid (0.015 pg/mL; IQR, 0.007-0.19 pg/mL;  $P < .05$ ) and sputum (6.18 pg/mL; IQR, 3.13-14.8 pg/mL) compared with levels seen in healthy subjects (1.19 pg/mL; IQR, 1.0-2.2 pg/mL;  $P = .005$ ; see Fig E4, B), suggesting that its secretion might be relatively steroid insensitive and might be derived from cellular sources other than airway  $T_H2$  cells.

Analysis showed no significant differences in  $T_H17$  cell or  $\gamma\delta$ -17 T-cell frequencies between asthmatic patients and healthy subjects (Fig 1, B, and see Fig E5 in this article's Online Repository at [www.jacionline.org](http://www.jacionline.org)). Furthermore, we found no evidence of dysregulation of the  $T_H17$  response during cold-induced exacerbations of asthma (see the Results section and Figs E6 and E7 in this article's Online Repository at [www.jacionline.org](http://www.jacionline.org)). Likewise, IL-17 levels were not increased in BAL fluid, sputum, or serum from asthmatic patients (see Fig E4, B, and data not shown;  $P > .05$  in all compartments). However, when asthma was stratified according to severity, IL-17 levels in BAL fluid were increased in patients with mild asthma ( $P = .04$ ; see Fig E4, A). Increased IL-17 levels were associated with the presence of allergic rhinitis (0.017 pg/mL [IQR, 0.0065-0.043 pg/mL] if present and 0.005 pg/mL [IQR, 0.0033-0.010 pg/mL] if absent,  $P = .02$ ), with airway eosinophilia ( $r_s = 0.34$ ,  $P = .04$ ) and high serum IgE levels ( $r_s = 0.42$ ,  $P = .007$ ; see Fig E4, C).

$T_H17$  cells share functionally and developmentally antagonistic relationships with the immunoregulatory Treg cells that regulate airway hyperresponsiveness in murine asthma models.<sup>26</sup> We observed a slight but significant deficiency of BAL  $CD4^+FOXP3^+$  Treg cells in asthmatic patients (median frequency, 5.3%; IQR, 4.3% to 8.2%) compared with those in healthy subjects (8.1%; IQR, 5.6% to 10%;  $P = .03$ ; Fig 1, C), which was restricted to patients with severe asthma (Fig 1, C) and was not evident in blood, sputum, or bronchial biopsy specimens.

There was a striking deficiency of T-cell receptor  $V\alpha 7.2^+CD161^+$  MAIT cells in blood, sputum, and biopsy specimens from asthmatic patients, which was related to disease severity and treatment with ICSs (Fig 2 and see Fig E8 in this article's Online Repository at [www.jacionline.org](http://www.jacionline.org)). There was evidence of seasonal variation in MAIT cell frequencies and association with serum vitamin D3 concentrations and use of oral corticosteroids (see the Results section and Fig E9 in this article's Online Repository).

Application of BNA to pathobiologic and clinical features in relation to asthma severity showed complex nonlinear associations (Fig 3). Five nodes (eNO, IL-17, IFN- $\gamma$ , neutrophils, and vitamin D) without strong interactions with other parameters were not connected and therefore remained outside the network. The asthma severity node was strongly connected with mast cell mediators, tryptase, chymase, and carboxypeptidase A3 and with IL-13- and IFN- $\gamma$ -secreting  $CD8^+$  cytotoxic T cells ( $T_C2$  and  $T_C1$  cells, respectively). There was a strong negative association between MAIT cell frequencies and ICS use that, in turn, was positively associated with asthma severity.

To look further for novel associations between clinical and pathobiologic features, we applied TDA to all acquired clinical and pathobiologic data (Figs 4 and 5 and see Table E4 in this article's Online Repository at [www.jacionline.org](http://www.jacionline.org)). Data were treated as composite averages for T-cell subsets (across blood, sputum, BAL fluid, and biopsy specimens), cytokines and eosinophils (across blood, sputum, and BAL fluid), neutrophils, macrophages, lymphocytes, mast cell mediators, and basogranulin (across sputum and BAL fluid). One healthy and 6 asthma clusters were identified.

The TDA-derived cluster 1, comprising predominantly patients with mild atopic asthma, had (compared with other asthmatic patients) better lung function, lower Asthma Control Questionnaire (ACQ)<sup>27</sup> scores (mean, 0.88), and lower severity, as assessed by a physician on enrollment or based on Global Initiative for Asthma (GINA) criteria,<sup>20</sup> and patients were mostly not receiving ICSs. They had increased IL-13-secreting  $T_H2$  cell numbers and lower IL-13 and tryptase levels and were predominantly paucigranulocytic (sputum neutrophils,  $\leq 61\%$ ; eosinophils,  $\leq 3\%$ ; Fig 4, B, and see Table E4).

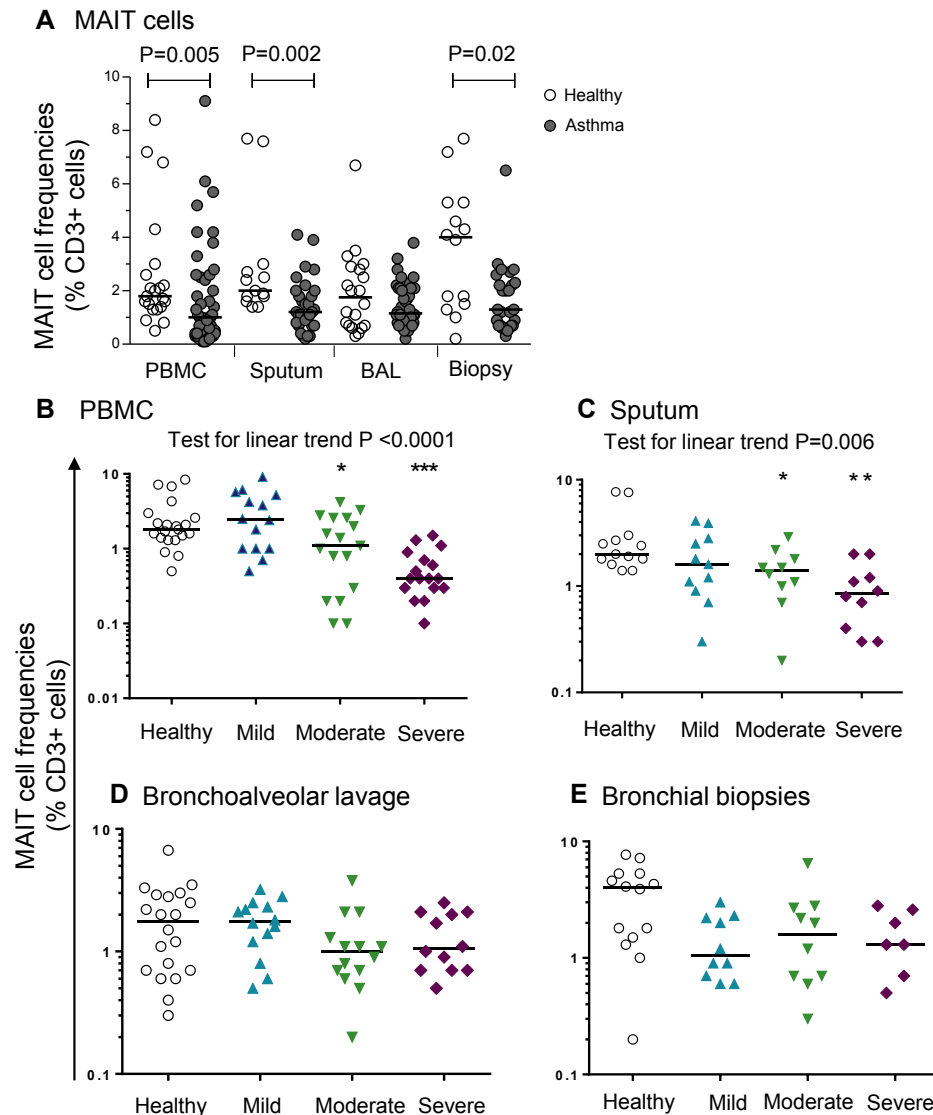
Cluster 2 consisted of patients with well-controlled asthma (mean ACQ score, 0.5), with little evidence of inflammation (the only abnormality being eosinophilia) and lower frequencies of Treg cells and IFN- $\gamma$ -secreting  $CD8^+$  T cells (Fig 4).

Cluster 3 consisted of patients with moderately severe (defined by enrollment criteria) and partially controlled asthma (based on GINA criteria<sup>20</sup>) despite ICSs; they had the highest bronchodilator reversibility and eNO levels. Their pathobiologic profile consisted of type 2 inflammation, with the highest levels of IL-5 and IL-13 and high frequencies of IL-13-secreting  $T_H2$  cells in bronchial biopsy specimens (Fig 5, A, and see Figs E10 to E12 in this article's Online Repository at [www.jacionline.org](http://www.jacionline.org)) but also other T-cell subsets,  $T_H1$  cells,  $T_H17$  cells, and Treg cells.

Cluster 4 was a small group with later-onset (mean, 28 years) moderately severe disease based on a physician's assessment, nasal polyposis, salicylate sensitivity, and low IL-17 levels.

Cluster 5 asthmatic patients were older (mean age, 50 years), with high BMI (mean, 32.6 kg/m<sup>2</sup>), poor lung function, high symptom scores (mean ACQ score, 2.1), and high treatment requirements (predominantly GINA step 4-5 and a mean of 1500  $\mu$ g/d beclomethasone dipropionate equivalent). Their pathobiologic profile was high type 2 cytokine levels (IL-5 and IL-13), IL-13-secreting  $CD8^+$  T ( $T_C2$ ) cells (see Fig E13, D, in this article's Online Repository at [www.jacionline.org](http://www.jacionline.org)), and high tryptase, chymase, and carboxypeptidase A3 levels (Figs 4 and 5, C, and see Figs E10 to E12 in this article's Online Repository). However, when compared with cluster 3 (also type 2 cytokine high), cluster 5 had fewer Treg cells and higher ICS use (mean difference, 1250  $\mu$ g/d).

Cluster 6 was predominantly female, obese (mean BMI, 35 kg/m<sup>2</sup>), and nonatopic, with salicylate sensitivity and later onset (mean age, 25 years). They were the most severe cluster based on GINA classification, physician's assessment, symptom scores (mean ACQ score, 3.2), and lung function (mean prebronchodilator FEV<sub>1</sub>, 62%), despite high-dose ICSs (see Fig E12, B, in this article's Online Repository at [www.jacionline.org](http://www.jacionline.org)) and, frequently (50% of the group), maintenance oral corticosteroids (mean, 14 mg/d prednisolone). Their key pathobiologic features were high carboxypeptidase A3 levels and profound MAIT cell deficiency (Figs 4, E, and 5, D, and see Fig E9, D). They also had low  $T_C1$ ,  $T_H17$ , and IL-13-secreting  $T_H2$  cell numbers



**FIG 2.** MAIT cells ( $V\alpha 7.2^+ CD161^+$ ) as proportions of  $CD3^+$  T cells in blood, sputum, BAL fluid, and endobronchial biopsy specimens in healthy subjects and asthmatic patients (**A**) and stratified by disease severity (**B**). Horizontal lines show medians. Unpaired *t* tests were used for log-transformed data. MAIT cell deficiency correlates with severity by linear trends across groups using residuals on log-transformed data (where  $P < .05$ ). \* $P < .05$ , \*\* $P < .01$ , and \*\*\* $P < .001$ , *post hoc* Dunnett test compared with healthy subjects.

(see Fig E9, A) but increased tryptase (Figs 4, E, and 5, C) and chymase levels. This cluster contained a higher proportion of participants who could be classified as cluster 5, as described by the Severe Asthma Research Program<sup>9</sup> (see Fig E13, B) and the obese, noneosinophilic cluster reported by Haldar et al.<sup>10</sup>

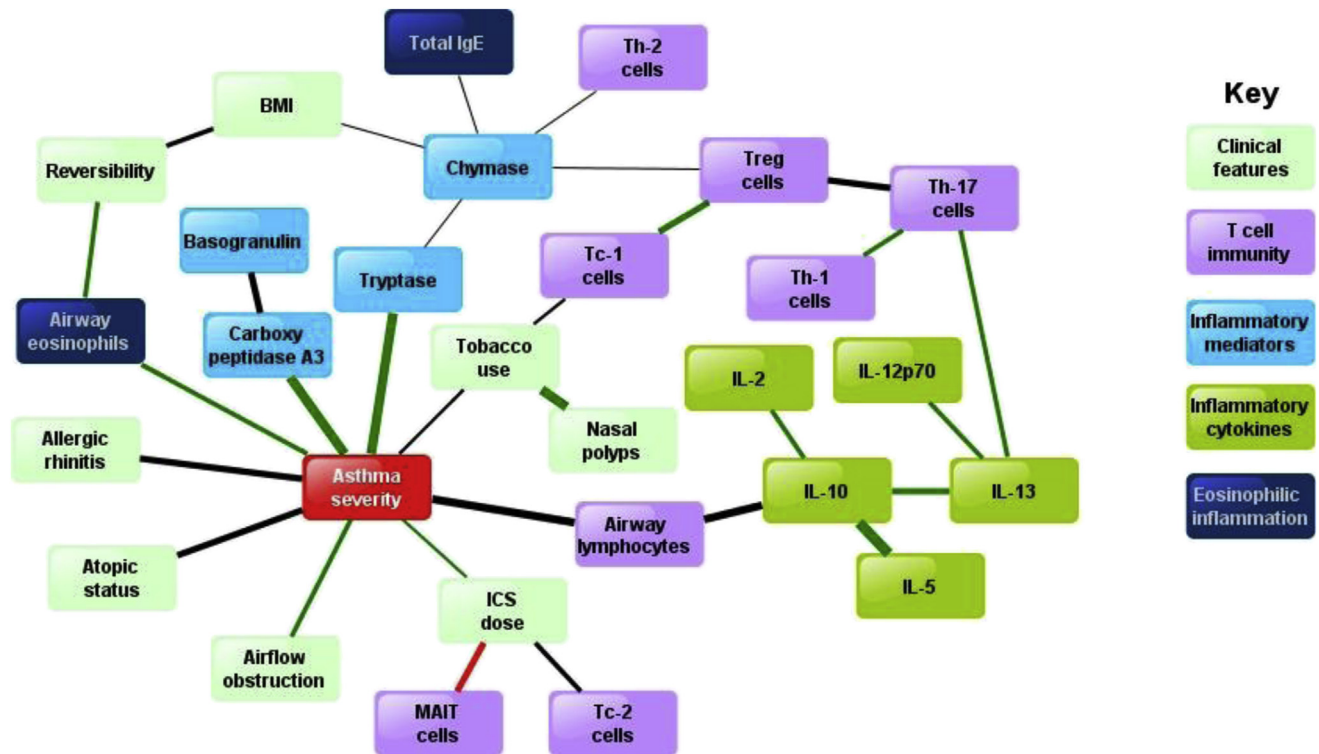
The majority of participants with sputum neutrophilia, which was defined as neutrophil numbers of greater than 61%,<sup>28</sup> were in clusters 5 and 6, whereas eosinophilic asthma was distributed across clusters 1, 2, 3, and 5 but not clusters 4 or 6 (Fig 4, B).

## DISCUSSION

Asthma is a common disease with a clinical severity that ranges from mild forms controlled with  $\beta_2$ -agonists alone or low doses of ICSs to very severe forms requiring high doses of ICSs and oral corticosteroids and, increasingly, biologics, such as the anti-IgE

mAb omalizumab.<sup>29</sup> In this study comprehensive analysis of T cells, granulocytes, cytokines, and mast cell mediators across the airway lumen, mucosa, and blood compartments pointed to their relative roles within the asthma syndrome that have not been recognized before: reduced MAIT cell frequencies as a striking feature that is related to asthma severity, reduced Treg cell frequencies in severe disease, and increased mast cell mediator levels in patients with severe disease, which is consistent with corticosteroid-insensitive mast cell activation. This study shows that the asthma spectrum can be broken down into several multi-dimensional clusters defined by combined clinical parameters and underlying mechanisms (pathobiology), which provides proof of concept for endotyping asthma for better understanding of its mechanisms and more focused drug development.

Original descriptions of asthma pathobiology<sup>3</sup> suggested a key role for  $T_H2$  mechanisms. Consistent with this concept,

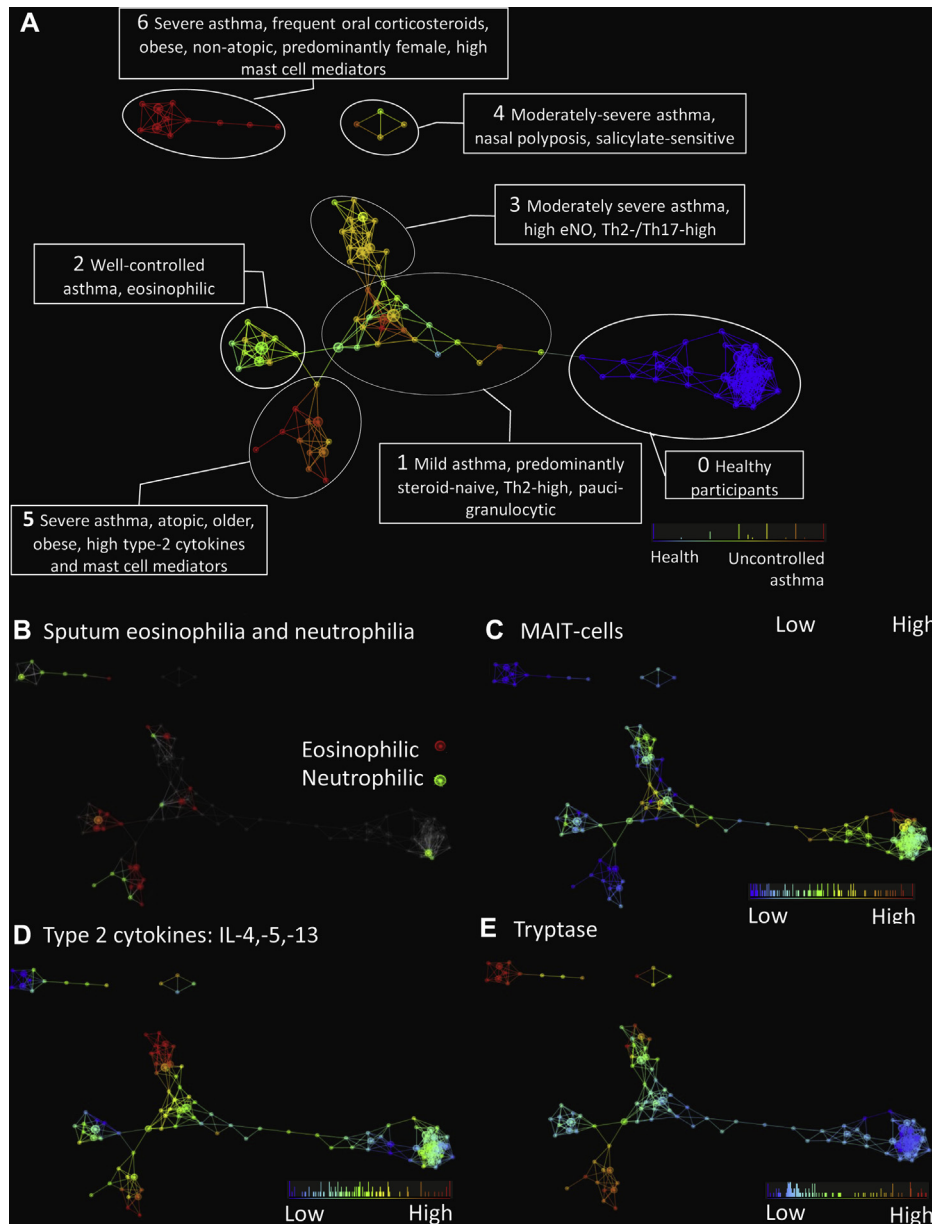


**FIG 3.** Bayesian belief network showing the strongest interactions between pathobiologic parameters across a range of clinical severities of asthma or health. Nodes without strong interactions are excluded. Line thickness represents strength of interaction (Euclidean distance). Line colors: *green*, positive associations; *red*, negative associations; *black*, nonlinear associations. Asthma severity is based on overall physician's assessment at enrollment (see Table E1). *BMI*, Body mass index; *T<sub>C1</sub>*, CD8<sup>+</sup>IFN- $\gamma$ <sup>+</sup> T cells; *T<sub>C2</sub>*, CD8<sup>+</sup>IL-13<sup>+</sup> T cells.

when all the asthmatic patients in this study were compared as a group with healthy participants, the most significant asthma discriminators were airway eosinophilia and higher levels of mast cell mediators (carboxypeptidase A3, chymase, and tryptase), IL-5, IL-13, eNO, and serum IgE but lower IFN- $\gamma$  levels, a pathobiologic profile classically associated with T<sub>H2</sub> inflammation (Fig 1, A, and see Fig E11). The application of BNA showed high connectivity between the asthma severity node and nodes for mast cell mediators and IL-13- and IFN- $\gamma$ -secreting CD8<sup>+</sup> cytotoxic T cells (T<sub>C2</sub> and T<sub>C1</sub> cells, respectively) and a strong negative association between MAIT cell frequencies and asthma severity and ICS consumption. Applying the recently developed TDA method<sup>21,22</sup> to the same data set showed complex multidimensional clusters (ie, possible endotypes defined by a combination of clinicopathobiologic features).<sup>8,11</sup> The advantage of TDA over standard clustering methodologies is that it provides geometric representations of complex and multidimensional data sets that reveal and stratify distinct subgroups.<sup>22</sup> It combines features of standard statistical methods, such as singular value decompositions and similarity metrics, to construct a network that clusters most similar data points into nodes. A node in a TDA network represents a group of most similar data points (in this case  $\geq 2$  subjects who are similar in multiple dimensions). Each node can be joined to the next node if they share common data points (ie, subjects). This allows a natural continuous network when the phenomenon is not disjointed.<sup>21</sup> TDA can deal with both linear and nonlinear associations and identifies significant subgroups

in a data-driven manner, allowing for finer stratification.<sup>21</sup> Furthermore, TDA is sensitive to both large- and small-scale patterns that other techniques, such as clustering and multidimensional scaling, often do not detect because they sometimes obscure geometric features captured by using topological methods. Hierarchical clustering cannot easily identify these subgroups because it tends to separate points that might in fact be close in the data.<sup>21</sup>

The finding of clinicopathobiologic clusters in the data set in this study should improve our understanding of asthma and inform drug development. Overexpression of the T<sub>H2</sub> cytokine network in cluster 1 is similar to the original reports in corticosteroid-naïve asthmatic patients, highlighting the role of type 2 mechanisms in asthmatic patients.<sup>3</sup> Clusters 3 and 5 share many clinical features, including atopy, allergic rhinitis, and emotion-related symptoms (see this article's Online Repository). Both are characterized by type 2 inflammation, with the highest levels of IL-5, IL-13, and IL-10, suggesting that these clusters reflect asthma endotypes that might be particularly suitable for biologics, such as mepolizumab<sup>30</sup> and lebrikizumab,<sup>31</sup> that currently use indirect biomarkers (ie, eosinophil counts and serum periostin levels) to select patients to maximize clinical efficacy. However, important differences between these 2 clusters were identified: higher Treg cell frequencies in cluster 3 might explain their lower corticosteroid requirements, whereas lower IL-13-secreting T<sub>H2</sub> cell frequencies and higher tryptase levels in cluster 5 suggest distinct, steroid-insensitive mechanisms.<sup>32</sup> It should be noted that we stained only for IL-13, and therefore we cannot

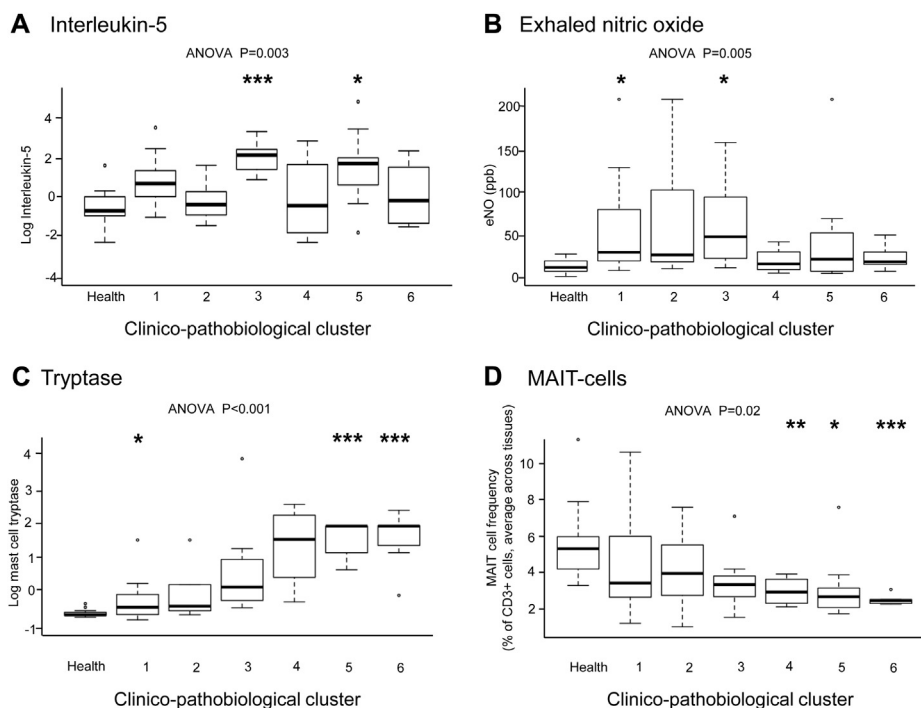


**FIG 4.** A, Multidimensional clinical and pathobiologic clusters in asthmatic patients and healthy subjects. Topological network analysis of clinical and pathobiologic features generates 1 healthy (*blue*) and 6 distinct clinicopathobiologic asthma clusters (1-6). The network is colored by disease severity (GINA classification), with patients with the most severe disease in red and patients with the milder forms in varying shades of *orange*, *yellow*, and *green*. B, The same network as Fig 4, A, overlaid with distribution of neutrophilic (sputum neutrophils >61%, *green*) or eosinophilic (sputum eosinophils >3%, *red*) asthma. C, Frequencies of MAIT cells. D, The network is colored based on average concentrations of the type 2 cytokines IL-4, IL-5, and IL-13 in serum, sputum, and BAL fluid. E, The network is colored based on concentrations of mast cell tryptase in sputum and BAL fluid. In Fig 4, B-E, the colors represent concentrations or frequencies, ranging from low (*blue*) to high (*red*) concentrations. The TDA used 62 subjects with most complete data. The variance normalized Euclidean metric was used. The lenses used were principal and secondary singular value decomposition (resolution, 32; gain, 4.0/3.5 $\times$ ; equalized). Node size is proportional to the number of subjects in the node.

exclude an increase in T<sub>H</sub>2 cells secreting IL-4 or IL-5 in the more severe asthma clusters. We observed some differences between patterns of cytokine secretion in sputum and BAL fluid, which might arise because BAL samples the distal airways and alveoli, whereas sputum measurement reflects changes in more proximal airways.<sup>35</sup>

The strong association between asthma severity and mast cell mediator levels in clusters 5 and 6 suggests that severe asthma is a disease in which mast cell activation plays an important role. Our data add to evidence implicating mast cells in patients with severe asthma, providing additional confirmation that should stimulate the development of drugs that target mast cells. Brightling et al<sup>6</sup>





**FIG 5.** Analyses generated from the clinicopathobiologic TDA network in Fig 4 show concentrations of IL-5 averaged across serum, sputum, and BAL fluid (A); eNO concentrations (B); mast cell tryptase levels in BAL fluid and sputum (C); and MAIT cells in blood, sputum, BAL fluid, and bronchial biopsy specimens (D). Box and whisker plots show medians, IQRs, and ranges. Statistical tests indicate 1-way ANOVA, with *post hoc* t tests compared with healthy subjects by using the Bonferroni correction. \**P* < .05, \*\**P* < .01, and \*\*\**P* < .001.

have described increased numbers of tryptase-positive mast cells infiltrating the airway smooth muscle in patients with mild and severe<sup>34</sup> asthma in numbers that correlate with airway hyperresponsiveness.<sup>6,18</sup> In the Severe Asthma Research Program Balzar et al<sup>16</sup> reported that severe asthma was associated with an increase in numbers of bronchial mast cells staining positive for both tryptase and chymase and with BAL concentrations of PGD<sub>2</sub>, a lipid mediator associated with mast cells and shown to increase after allergen challenge.<sup>5</sup>

The current study adds to the evidence<sup>5,16,35</sup> that mast cell activation is insensitive to corticosteroids and suggests that patients with severe asthma, in whom mast cell mediator levels are increased, can be stratified further by clinical features, such as atopic status and also by evidence of type 2 cytokine-mediated mechanisms in cluster 5 but not cluster 6. We speculate that the anti-IgE antibody omalizumab might exhibit some of its beneficial effects in patients with severe atopic asthma through inhibition of IgE-mediated mast cell activation. This finding might yield a prognostic biomarker for this biologic, which is currently missing, and could extend the indication for omalizumab to non-atopic asthma, in which a preliminary trial has suggested clinical efficacy.<sup>36</sup>

Several asthma studies have reported increased IL-17 levels,<sup>37,38</sup> but this study found only limited evidence for T<sub>H</sub>17 cells and none for γδ-17 cells during either a period of clinical stability or an exacerbation. This is consistent with the findings of a recent trial in which the anti-IL-17 receptor A mAb brodalumab had no effect on symptoms or lung function in patients with moderate-to-severe asthma.<sup>39</sup> However, we observed associations between IL-17 concentrations and levels of traditional type 2

biomarkers (airways eosinophils and serum IgE) that have not been reported before because IL-17 has mainly been implicated in neutrophilic inflammation in asthmatic patients.<sup>40</sup>

Our study also identified, for the first time, reduced numbers of CD3<sup>+</sup>CD4<sup>+</sup>FOXP3<sup>+</sup> Treg cells in patients with severe asthma. In human subjects some upregulation of the nuclear transcription factor FOXP3 has been observed in nonsuppressive T cells on T-cell receptor stimulation.<sup>41</sup> Although we were not able to further validate the identity of these FOXP3<sup>+</sup> T<sub>H</sub> cells as Treg cells with additional surface markers, we observed low rates of spontaneous T-cell activation, suggesting that activated T cells will comprise only a small proportion of the CD3<sup>+</sup>CD4<sup>+</sup>FOXP<sup>+</sup> T cells enumerated.

An important finding in this study is the striking deficiency of MAIT cells in both the circulation and lungs, which correlated strongly with clinical severity. To our knowledge, MAIT cells have not yet been studied in any airways disease. This study suggests that they are more abundant than invariant natural killer T cells,<sup>15</sup> comprising up to 10% of blood and airway T cells. Their marked evolutionary conservation implies an important role in immunity.<sup>42,43</sup> MAIT cells are the most abundant T-cell subset able to detect and kill bacteria-infected cells. Recent animal models of bacterial airways infection indicate their critical role in lung host defense.<sup>42,44</sup> We found MAIT cell frequencies to be associated with serum vitamin D3 concentrations and in pilot data could be suppressed by 1 week of treatment with prednisolone (see Fig E14 in this article's Online Repository at [www.jacionline.org](http://www.jacionline.org)). The lack of a significant deficiency of MAIT cells in BAL fluid might result from low peripheral deposition of ICSS in the more distal airways and alveolar compartments sampled by

means of lavage.<sup>33</sup> Their deficiency in patients with severe asthma, whether primary or resulting from chronic corticosteroid use, can contribute to increased susceptibility to bacterial infection recognized in patients with severe asthma<sup>45,46</sup> and to changes in the airway microbiome<sup>47</sup> and might thus effect asthma pathology.<sup>44</sup>

In summary, this study sheds light on previously unreported observations in asthma in relation to disease severity. The observation of clusters composed of clinical and pathobiologic parameters will need to be reproduced before these clusters can be accepted as novel endotypes of asthma. However, this paves the way for future asthma studies in large patient cohorts, such as the Severe Asthma Research Program<sup>9</sup> and Unbiased BIOMarkers in PREDiction of respiratory disease outcomes (U-BIOPRED),<sup>48</sup> in which distinct asthma endotypes could be identified and subsequently validated, allowing translation to clinical trials and routine clinical practice.

We thank the staff of the NIHR Wellcome Trust Southampton Clinical Research Facility. We thank Professor Alan Jackson and Dr Stephen Wootton for their advice on measurements of vitamin D3 and the laboratories of University Hospital Southampton for conducting the assays. We also thank all the volunteers who gave of their time and enthusiasm to make this research possible.

#### Key messages

- We provide proof of concept for a powerful new analytic approach to defining multidimensional clinical and pathobiologic clusters: TDA. This underlines the role of mast cells in 2 distinct subgroups of patients with severe asthma characterized by the presence or absence of type 2 responses.
- Evidence supporting a role for T<sub>H</sub>17 cells in patients with severe asthma is limited.
- We describe a striking deficiency of mucosal-associated T cells, as well as a mild reduction in Treg cell numbers, in patients with severe asthma.

#### REFERENCES

1. Mosmann TR, Cherwinski H, Bond MW, Giedlin MA, Coffman RL. Two types of murine helper T cell clone. I. Definition according to profiles of lymphokine activities and secreted proteins. *J Immunol* 1986;136:2348-57.
2. Parronchi P, Macchia D, Piccinni MP, Biswas P, Simonelli C, Maggi E, et al. Allergen- and bacterial antigen-specific T-cell clones established from atopic donors show a different profile of cytokine production. *Proc Natl Acad Sci U S A* 1991;88:4538-42.
3. Robinson DS, Hamid Q, Ying S, Tscopoulos A, Barkans J, Bentley AM, et al. Predominant TH2-like bronchoalveolar T-lymphocyte population in atopic asthma. *N Engl J Med* 1992;326:298-304.
4. Azzawi M, Bradley B, Jeffery PK, Freq AJ, Wardlaw AJ, Knowles G, et al. Identification of activated T lymphocytes and eosinophils in bronchial biopsies in stable atopic asthma. *Am Rev Respir Dis* 1990;142:1407-13.
5. Wenzel SE, Schwartz LB, Langmack EL, Halliday JL, Trudeau JB, Gibbs RL, et al. Evidence that severe asthma can be divided pathologically into two inflammatory subtypes with distinct physiologic and clinical characteristics. *Am J Respir Crit Care Med* 1999;160:1001-8.
6. Brightling CE, Bradding P, Symon FA, Holgate ST, Wardlaw AJ, Pavord ID. Mast-cell infiltration of airway smooth muscle in asthma. *N Engl J Med* 2002;346:1699-705.
7. Bousquet J, Chanez P, Lacoste JY, Barneon G, Ghavanian N, Enander I, et al. Eosinophilic inflammation in asthma. *N Engl J Med* 1990;323:1033-9.
8. Anderson GP. Endotyping asthma: new insights into key pathogenic mechanisms in a complex, heterogeneous disease. *Lancet* 2008;372:1107-19.
9. Moore WC, Meyers DA, Wenzel SE, Teague WG, Li H, Li X, et al. Identification of asthma phenotypes using cluster analysis in the Severe Asthma Research Program. *Am J Respir Crit Care Med* 2010;181:315-23.
10. Haldar P, Pavord ID, Shaw DE, Berry MA, Thomas M, Brightling CE, et al. Cluster analysis and clinical asthma phenotypes. *Am J Respir Crit Care Med* 2008;178:218-24.
11. Lotvall J, Akdis CA, Bacharier LB, Bjermer L, Casale TB, Custovic A, et al. Asthma endotypes: a new approach to classification of disease entities within the asthma syndrome. *J Allergy Clin Immunol* 2011;127:355-60.
12. Sakaguchi S, Sakaguchi N, Asano M, Itoh M, Toda M. Immunologic self-tolerance maintained by activated T cells expressing IL-2 receptor alpha-chains (CD25). Breakdown of a single mechanism of self-tolerance causes various autoimmune diseases. *J Immunol* 1995;155:1151-64.
13. Robinson DS, Larche M, Durham SR. Tregs and allergic disease. *J Clin Invest* 2004;114:1389-97.
14. Fossiez F, Djossou O, Chomarat P, Flores-Romo L, Ait-Yahia S, Maat C, et al. T cell interleukin-17 induces stromal cells to produce proinflammatory and hematopoietic cytokines. *J Exp Med* 1996;183:2593-603.
15. Vijayanand P, Seumois G, Pickard C, Powell RM, Angco G, Sammut D, et al. Invariant natural killer T cells in asthma and chronic obstructive pulmonary disease. *N Engl J Med* 2007;356:1410-22.
16. Balzar S, Fajt ML, Comhair SA, Erzurum SC, Bleecker E, Busse WW, et al. Mast cell phenotype, location, and activation in severe asthma. Data from the Severe Asthma Research Program. *Am J Respir Crit Care Med* 2011;183:299-309.
17. Djukanovic R, Wilson JW, Britten KM, Wilson SJ, Walls AF, Roche WR, et al. Quantitation of mast cells and eosinophils in the bronchial mucosa of symptomatic atopic asthmatics and healthy control subjects using immunohistochemistry. *Am Rev Respir Dis* 1990;142:863-71.
18. Gibson PG, Saltos N, Borgas T. Airway mast cells and eosinophils correlate with clinical severity and airway hyperresponsiveness in corticosteroid-treated asthma. *J Allergy Clin Immunol* 2000;105:752-9.
19. Dusseaux M, Martin E, Serriari N, Peguillet I, Premel V, Louis D, et al. Human MAIT cells are xenobiotic-resistant, tissue-targeted, CD161hi IL-17-secreting T cells. *Blood* 2011;117:1250-9.
20. Global Initiative for Asthma (GIFA). Global strategy for asthma management and prevention 2012. Available at: <http://www.ginasthma.org/>. Accessed September 5, 2013.
21. Lum PY, Singh G, Lehman A, Ishkanov T, Veldemo-Johansson M, Alagappan M, et al. Extracting insights from the shape of complex data using topology. *Sci Rep* 2013;3:1236.
22. Carlsson G. Topology and data. *Bull Am Math Soc* 2009;46:255-308.
23. Djukanovic R, Sterk PJ, Fahy JV, Hargreave FE. Standardised methodology of sputum induction and processing. *Eur Respir J Suppl* 2002;37:1s-2s.
24. Mamessier E, Nieves A, Lorec AM, Dupuy P, Pinot D, Pinet C, et al. T-cell activation during exacerbations: a longitudinal study in refractory asthma. *Allergy* 2008;63:1202-10.
25. Reshef DN, Reshef YA, Finucane HK, Grossman SR, McVean G, Turnbaugh PJ, et al. Detecting novel associations in large data sets. *Science* 2011;334:1518-24.
26. Kearley J, Barker JE, Robinson DS, Lloyd CM. Resolution of airway inflammation and hyperreactivity after in vivo transfer of CD4+CD25+ regulatory T cells is interleukin 10 dependent. *J Exp Med* 2005;202:1539-47.
27. Juniper EF, O'Byrne PM, Ferrie PJ, King DR, Roberts JN. Measuring asthma control. Clinic questionnaire or daily diary? *Am J Respir Crit Care Med* 2000;162:1330-4.
28. Simpson JL, Scott R, Boyle MJ, Gibson PG. Inflammatory subtypes in asthma: assessment and identification using induced sputum. *Respirology* 2006;11:54-61.
29. Busse W, Corren J, Lanier BQ, McAlary M, Fowler-Taylor A, Cioppa GD, et al. Omalizumab, anti-IgE recombinant humanized monoclonal antibody, for the treatment of severe allergic asthma. *J Allergy Clin Immunol* 2001;108:184-90.
30. Haldar P, Brightling CE, Hargadon B, Gupta S, Monteiro W, Sousa A, et al. Mepolizumab and exacerbations of refractory eosinophilic asthma. *N Engl J Med* 2009;360:973-84.
31. Corren J, Lemanske RF, Hanania NA, Korenblat PE, Parsey MV, Arron JR, et al. Lebrikizumab treatment in adults with asthma. *N Engl J Med* 2011;365:1088-98.
32. Brusselle GG, Maes T, Bracke KR. Eosinophils in the spotlight: eosinophilic airway inflammation in nonallergic asthma. *Nat Med* 2013;19:977-9.
33. Staples KJ, Hinks TS, Ward JA, Gunn V, Smith C, Djukanovic R. Phenotypic characterization of lung macrophages in asthmatic patients: overexpression of CCL17. *J Allergy Clin Immunol* 2012;130:1404-12.e7.
34. Saha SK, Berry MA, Parker D, Siddiqui S, Morgan A, May R, et al. Increased sputum and bronchial biopsy IL-13 expression in severe asthma. *J Allergy Clin Immunol* 2008;121:685-91.

35. Balzar S, Chu HW, Strand M, Wenzel S. Relationship of small airway chymase-positive mast cells and lung function in severe asthma. *Am J Respir Crit Care Med* 2005;171:431-9.
36. Garcia G, Magnan A, Chiron R, Contin-Bordes C, Berger P, Taille C, et al. A proof-of-concept, randomized, controlled trial of omalizumab in patients with severe, difficult-to-control, nonatopic asthma. *Chest* 2013;144:411-9.
37. Molet S, Hamid Q, Davoine F, Nutku E, Taha R, Page N, et al. IL-17 is increased in asthmatic airways and induces human bronchial fibroblasts to produce cytokines. *J Allergy Clin Immunol* 2001;108:430-8.
38. Bullens DM, Truyen E, Coteur L, Couteur L, Dilissen E, Hellings PW, et al. IL-17 mRNA in sputum of asthmatic patients: linking T cell driven inflammation and granulocytic influx? *Respir Res* 2006;7:135.
39. Busse WW, Holgate S, Kerwin E, Chon Y, Feng J, Lin J, et al. Randomized, double-blind, placebo-controlled study of brodalumab, a human anti-IL-17 receptor monoclonal antibody, in moderate to severe asthma. *Am J Respir Crit Care Med* 2013;188:1294-302.
40. McKinley L, Alcorn JF, Peterson A, Dupont RB, Kapadia S, Logar A, et al. TH17 cells mediate steroid-resistant airway inflammation and airway hyperresponsiveness in mice. *J Immunol* 2008;181:4089-97.
41. Fontenot JD, Gavin MA, Rudensky AY. Foxp3 programs the development and function of CD4+CD25+ regulatory T cells. *Nat Immunol* 2003;4:330-6.
42. Kjer-Nielsen L, Patel O, Corbett AJ, Le Nours J, Meehan B, Liu L, et al. MRI presents microbial vitamin B metabolites to MAIT cells. *Nature* 2012;49:717-23.
43. Brossay L, Chioda M, Burdin N, Koezuka Y, Casorati G, Dellabona P, et al. CD1d-mediated recognition of an alpha-galactosylceramide by natural killer T cells is highly conserved through mammalian evolution. *J Exp Med* 1998;188:1521-8.
44. Meierovics A, Yankelevich WJ, Cowley SC. MAIT cells are critical for optimal mucosal immune responses during in vivo pulmonary bacterial infection. *Proc Natl Acad Sci U S A* 2013;110:E3119-28.
45. Talbot TR, Hartert TV, Mitchel E, Halasa NB, Arbogast PG, Poehling KA, et al. Asthma as a risk factor for invasive pneumococcal disease. *N Engl J Med* 2005;352:2082-90.
46. Klemets P, Lyytikainen O, Ruutu P, Ollgren J, Kaijalainen T, Leinonen M, et al. Risk of invasive pneumococcal infections among working age adults with asthma. *Thorax* 2010;65:698-702.
47. Green BJ, Wiriyachaiporn S, Grainge C, Rogers GB, Kehagia V, Lau L, et al. Potentially pathogenic airway bacteria and neutrophilic inflammation in treatment resistant severe asthma. *PLoS One* 2014;9:e100645.
48. Auffray C, Adcock IM, Chung KF, Djukanovic R, Pison C, Sterk PJ. An integrative systems biology approach to understanding pulmonary diseases. *Chest* 2010;137:1410-6.