



CASE REPORT

Open Access

Severe reaction in a child with asymptomatic codfish allergy: Food challenge reactivating recurrent pancreatitis

Katia Pellegrino¹, Leila Emma D'Urbano², Maria Cristina Artesani¹, Carla Riccardi¹, Sandro Mancini¹, Sergio Bella³, Federico Alghisi³ and Giovanni Cavagni^{1*}

Abstract

An 8-year-old child during the first year of life manifested severe atopic dermatitis and chronic diarrhea with mucorrhea and rectal bleeding; a fish-free diet was started based on weakly positive skin-prick tests to codfish extract. At the age of 4 years the child began to suffer of recurrent pancreatitis. When he came to our attention for the evaluation of his fish allergy, he was asymptomatic; a weak reactivity to codfish was observed (SPTs: cod, 4 mm, sIgE ImmunoCAP: cod, 1.30kU/l). The food challenge test with cod was negative. When the child ate cod again, within 5 minutes, developed anaphylactic reaction and complained of abdominal pain compatible with pancreatitis (enzyme serum levels risen and parenchymal oedema at ultrasonography), that resolved within 7 days after specific therapy. This case raises two issues: the elimination diet in asymptomatic food allergy on the basis only of SPT and the ethicality of food challenge in gastrointestinal chronic disease.

Keywords: Food allergy, Codfish, Pancreatitis, Challenge, Anaphylaxis

Background

Recurrent pancreatitis is characterized by a progressive loss of endocrine and exocrine function. In children pancreatic insufficiency generally develop after several years [1]. Pancreatic damage activated by a food allergy is described only in 7 published reports [2-7].

Here we describe the case of a child who presented an anaphylactic reaction and reactivation of pancreatitis related to the second intake of codfish after specific challenge. This case underscores the possible relation of an elimination diet, started early in life with severe anaphylactic reaction and reactivation of a chronic disease (i.e. pancreatitis). We would alert pediatricians to the risk of food challenge test in a child with a chronic disease in remission.

Case report

An 8-year-old child came to our Pediatric Allergy Unit to evaluate his cow's milk (CM) and fish allergy. During

the first year of life he manifested severe atopic dermatitis and chronic diarrhea with mucorrhea and rectal bleeding and for this reason he began a CM-free diet.

The association of diarrhea with atopic dermatitis led to the exclusion from diet of foods frequently considered responsible for allergic hypersensitivity (egg, wheat, tomato and peanuts), even though skin-prick tests (SPTs) were negative, and to eliminate fish, that yielded a weakly positive response to extract from codfish. No clinical improvement was observed. At 4 years of age because of persisting anemia and chronic diarrhea, he was treated with mesalazine. Immediately he developed abdominal pain with raised serum amylase and lipase levels. Pancreatitis was diagnosed and two additional episodes occurred while off therapy.

At 8 years of age, when he came to our attention, reactivity to CM was absent (SPTs: CM, negative, histamine, 3 mm; sIgE ImmunoCAP: CM, <0.35kU/l), while weak reactivity to codfish was observed (SPTs: cod, 4 mm, sIgE ImmunoCAP: cod, 1.30kU/l). We reintroduced CM into the diet and then we performed the food challenge test (FCT) with cod that resulted negative. Nevertheless, when he ate cod again, he developed

* Correspondence: giovanni_cavagni@fastwebnet.net

¹Department of Paediatric Medicine–Allergy Unit, I.R.C.C.S. Children's Hospital "Bambino Gesù", Piazza S. Onofrio 4, 00165 Rome, Italy

Full list of author information is available at the end of the article

anaphylactic reaction within 5 minutes with rhinitis, asthma, stridor, urticaria and pallor. After resolution (adrenaline im, chlorpheniramine iv and hydrocortisone iv), the child complained of abdominal pain; pancreatic enzyme serum levels had risen (alpha-amylase from 104 UI/L to 2559 UI/L). Ultrasonography showed findings compatible with pancreatitis (Figure 1), that resolved within 7 days after specific therapy for pancreatitis (intravenous gabexate mesilate and ranitidine); serum alpha-amylase and lipase levels significantly decreased after 72 hours of treatment (219 UI/L and 114 UI/L, respectively). Since then he has been on fish-free diet and did not experience additional pancreatitis episodes.

Discussion

Pancreatitis manifesting as an allergic reaction to food is an extremely rare event, particularly when the offensive food is fish and the patient a child. This is the second reported case of pancreatitis related to fish. Previous cases refer to pancreatitis associated with mustard, milk, kiwi and banana [2-7]. The diagnosis of food allergy is essentially clinical [8]. This case raises the problem of prescribing elimination diets in patients with positive *in vitro* diagnostic tests, but asymptomatic [9,10]. In this case codfish, that for the first years of age the child ate without problems, was eliminated by diet only because of the weakly positive sIgE. An accurate clinical history-taking is essential to establish the relationship between food ingestion and allergic symptoms; a positive sIgE alone should not be regarded as sufficient for prescribing a diet.

Before eliminating a food from a child's diet, the pediatrician should be aware of the possible consequences. Some reports suggest that eliminating a food from the diet could lead to a loss of immunologic tolerance and be responsible for a severe anaphylactic reaction to the next (and often accidental) reintroduction of the suspected food [8-11]. During the first few years of life, despite a weak positive *in vivo* and *in vitro* reaction,

our patient tolerated cod. The FCT did after 5 years of fish eliminated diet was negative, but the second introduction of cod determined an anaphylactic reaction and the pancreatitis reactivation. We hypothesize that abstinence from fish was the reason of negative FCT, and the FCT induced the switching on of intolerance to fish with the consequence of an immediated IgE reaction (anaphylactic) that the child never did before, and the reactivation of pancreatitis.

Therefore, this case report raises the question of whether the FCT is ethical in children with gastrointestinal chronic disease.

Consent

Written informed consent was obtained from the patient's parents for the publication of this case report and accompanying image. A copy of the written consent is available for review by the Editor-in-Chief of this journal.

Abbreviations

sIgE: Specific IgE; CM: Cow's milk; SPT: Skin prick test; FCT: Food challenge test.

Competing interests

The authors declare that they have no competing interests.

Authors' contributions

Each author listed on this short communication has seen and approved the submission of this case report and takes full responsibility for this manuscript. KP: a pediatrician allergist, followed the patient, performed allergy tests, redacted the manuscript and contributed to data analysis; LED: as biologist, performed laboratory exams, collected clinical data and laboratory data into the database, redacted the manuscript and contributed to data analysis; MCA: as allergist, followed the patient in the diagnosis of fish allergy and performed the food challenge test; FA: as gastroenterologist and fellow in cystic fibrosis, followed the patient and performed the ultrasonography image analysis; GC: contributed to manage the study and reviewed the manuscript.

Author details

¹Department of Paediatric Medicine-Allergy Unit, I.R.C.C.S. Children's Hospital "Bambino Gesù", Piazza S. Onofrio 4, 00165 Rome, Italy. ²Rheumatology Research Laboratory, I.R.C.C.S. Children's Hospital "Bambino Gesù", Rome, Italy. ³Department of Paediatric Medicine-Cystic Fibrosis Unit, I.R.C.C.S. Children's Hospital "Bambino Gesù", Rome, Italy.

Received: 24 January 2011 Accepted: 22 February 2012

Published: 9 May 2012

References

1. Sánchez-Ramírez CA, Larrosa-Haro A, Flores-Martínez S, Sánchez-Corona J, Villa-Gómez A, Macías-Rosales R: **Acute and recurrent pancreatitis in children: etiological factors.** *Acta Paediatr* 2007, **96**(4):534-537.
2. Carrillo T, Agustín MC, Gasmán TM, Vilardell VU, Goiri IM: **Pancreatitis aguda como complicación de anafilaxia por mostaza.** *Rev Esp Alergol Immunol Clin* 1987, **2**:388-390.
3. Matteo A, Sarles H: **Is food allergy a cause of acute pancreatitis?** *Pancreas* 1990, **5**:234-237.
4. de Diego LA, Robles FJ, Herrero LT, Cos AE: **Acute pancreatitis associated with milk allergy.** *Int J Pancreatol* 1992, **12**:319-321.
5. Iwata F, Odajima Y: **Acute pancreatitis associated with food allergy.** *Eur J Pediatr* 1997, **156**:506.
6. Gastaminza G, Bernalola G, Camino ME: **Acute pancreatitis caused by allergy to kiwi fruit.** *Allergy* 1998, **53**:1104-1105.

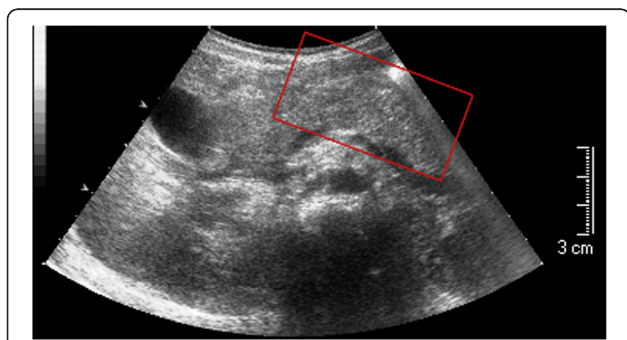


Figure 1 Ultrasound scan showing the pancreas increased in size owing to a large edematous area involving the pancreatic head and tail.

7. Inamura H, Kashiwase Y, Morioka J, Kurosawa M: **Acute pancreatitis possibly caused by allergy to bananas.** *J Invest Allergol Clin Immunol* 2005, **15**(3):222–224.
8. Eigenmann PA, Beyer K, Wesley Burks A, *et al*: **New visions for food allergy: an iPAC summary and future trends.** *Pediatr Allergy Immunol* 2008, **19**:26–39.
9. Bindslev-Jensen C, Ballmer-Weber BK, Bengtsson U, *et al*: **European Academy of Allergology and Clinical Immunology. Standardization of food challenges in patients with immediate reactions to foods-position paper from the European Academy of Allergology and Clinical Immunology.** *Allergy* 2004, **59**(7):690–697.
10. Muraro A, Roberts G, Clark A, *et al*: **EAACI Task Force on Anaphylaxis in Children. The management of anaphylaxis in childhood: position paper of the European academy of allergology and clinical immunology.** *Allergy* 2007, **62**(8):857–871.
11. Lack G: **Epidemiologic risks for food allergy.** *J Allergy Clin Immunol* 2008, **121**(6):1331–1336.

doi:10.1186/1824-7288-38-16

Cite this article as: Pellegrino *et al*: Severe reaction in a child with asymptomatic codfish allergy: Food challenge reactivating recurrent pancreatitis. *Italian Journal of Pediatrics* 2012 **38**:16.

**Submit your next manuscript to BioMed Central
and take full advantage of:**

- Convenient online submission
- Thorough peer review
- No space constraints or color figure charges
- Immediate publication on acceptance
- Inclusion in PubMed, CAS, Scopus and Google Scholar
- Research which is freely available for redistribution

Submit your manuscript at
www.biomedcentral.com/submit

