

Serum Tumor Marker Dynamics as Predictive Biomarkers in NSCLC Chemo-Immunotherapy and Mono-Immunotherapy Maintenance: A Registry-Based Descriptive Study

This article was published in the following Dove Press journal:
Lung Cancer: Targets and Therapy

David Lang^{1,2}
Wolfgang Haslinger²
Kaveh Akbari^{2,3}
Mario Scala^{2,3}
Benedikt Hergan^{2,3}
Christian Asel^{2,3}
Andreas Horner^{1,2}
Romana Wass^{1,2}
Elmar Brehm^{1,2}
Bernhard Kaiser¹
Bernd Lamprecht^{1,2}

¹Johannes Kepler University Hospital, Department of Pulmonology, Linz, Austria; ²Johannes Kepler University, Medical Faculty, Linz, Austria; ³Johannes Kepler University Hospital, Central Radiology Institute, Linz, Austria

Objective: To evaluate serum tumor markers (STM) as predictive biomarkers in advanced non-small cell lung cancer (NSCLC) treated with chemo-immunotherapy.

Methods: Patients having received platinum-based chemo-(CHT) and PD-1/PD-L1-directed immune checkpoint inhibitor (ICI) combination therapy were retrospectively followed. Carcinoembryonic antigen (CEA), carbohydrate antigen 19–9 (CA19-9), cytokeratin-19 fragments (CYFRA 21–1) and neuron specific enolase (NSE) were routinely measured at NSCLC diagnosis. The marker with the highest relative elevation was defined “leading STM”, its change was assessed between CHT-ICI as well as mono-ICI maintenance initiation and the respective subsequent restaging. Corresponding computed tomography evaluations were analyzed using response evaluation criteria in solid tumors (RECIST). For CHT-ICI combination and subsequent mono-ICI-maintenance therapy, leading STM and RECIST response were evaluated regarding progression-free (PFS) and overall survival (OS) in Kaplan–Meier analyses.

Results: Among 80 CHT-ICI patients (41% women, mean age 63 years), median PFS was 5 months (M;4,9), median OS was 15M (10,). PFS was significantly ($p=0.042$) longer, when the leading STM had decreased at first restaging under CHT-ICI combination therapy (9M (5,12; $n=41$) vs 5M (3,6; $n=16$)). In the 54 (67.5%) patients who received subsequent mono-ICI maintenance therapy, STM decrease was similarly associated with significantly ($p<0.001$) longer PFS (16M (7,; $n=16$) vs 3.5M (2,6; $n=22$)). Patients with radiologically stable or progressive disease and concomitant leading STM decrease had similar PFS in the CHT-ICI combination phase (4M (3,7; $n=16$) vs 4.5M (2,6; $n=14$)), but longer PFS in the mono-ICI maintenance setting (13M (7,16; $n=10$) vs 3M (2,4; $n=17$)). Median OS was not reached in most subgroups.

Conclusion: Leading STM dynamics provide predictive biomarker information additional to radiological response evaluation patients receiving CHT-ICI combination therapy, especially in the mono-ICI maintenance setting.

Keywords: carcinoembryonic antigen, platinum doublet chemotherapy, pembrolizumab, CYFRA 21-1, RECIST, nivolumab

Correspondence: David Lang
Kepler University Hospital, Department
of Pulmonology, MedCampus III,
Krankenhausstraße 9, Linz 4020, Austria
Tel +43 5 7680 83 73797
Email david.lang@kepleruniklinikum.at

Introduction

The advent of programmed cell death protein 1/programmed death-ligand 1 (PD-1/PD-L1)-directed immune-checkpoint inhibitor (ICI) therapy for non-small cell lung cancer (NSCLC) has triggered a quest of finding biomarkers predicting response to

such potentially effective treatment. Available baseline biomarkers like PD-L1 expression on tumor cells, tumor mutational burden or presence of a targetable genetic tumor alteration are being widely applied, but have only limited predictive properties on the individual patients' level.¹⁻⁴ For longitudinal follow-up in NSCLC therapy, radiological imaging by computed tomography (CT) is the only routine dynamic biomarker recommended.² Radiological response to ICI therapy can however sometimes be misleading, as pseudo-progression, mixed responses or long-term stabilization can occur.^{2,5,6} Also, selected patients may benefit from ICI treatment beyond radiological progression, while others may incur rapid hyperprogression.^{2,5,7,8}

Measurement of serum tumor markers (STM) is currently not recommended in diagnosis or management of advanced NSCLC.² However, in chemotherapy (CHT) or tyrosine kinase inhibitor therapy, there is limited evidence that carcinoembryonic antigen (CEA), cytokeratin-19 fragments (CYFRA 21-1) or carbohydrate antigen 19-9 (CA19-9) can be used in treatment monitoring and longitudinal follow-up.⁹⁻¹¹ Concerning ICI therapies, retrospective analyses suggest that baseline STM concentrations may have predictive relevance,^{12,13} and STM dynamics under ICI treatment could aid to estimate therapy outcomes.¹⁴⁻¹⁶

We have recently reported on the utility of STM dynamics in NSCLC patients undergoing ICI monotherapy, where we could demonstrate that the early change of the leading STM out of a panel of CEA, CYFRA 21-1, CA19-9 and neuron-specific enolase (NSE) predicted progression-free (PFS) and overall survival (OS). Of interest, a leading STM decrease upon concomitant stable or progressive disease in first radiological restaging could identify patients with considerably more advantageous outcomes.¹⁵

Within the last years, the application of ICI in advanced NSCLC without targetable genetic alterations has shifted away from monotherapy in second or later-line to first-line chemo-immunotherapy (CHT-ICI), especially in patients with a PD-L1 expression <50%.^{2,17-19} Given our previous results concerning STM as biomarkers for ICI monotherapy, we now aimed to evaluate, if early STM dynamics had similar predictive properties also in the CHT-ICI setting.

Patients and Methods

We retrospectively selected all consecutive patients having received at least one cycle of platinum-based doublet CHT and PD-1/PD-L1-directed ICI substances for advanced

(stage IV or not otherwise treatable stage III)²⁰ NSCLC at the lung cancer unit of Kepler University Hospital Linz, Austria until December 2019.

The patient registry as well as the present evaluation have been approved by the ethics committee of the federal state of Upper-Austria (EK Nr. 1139/2019). This study was conducted in accordance with the guidelines for the REporting of tumor MARKer studies (REMARK).²¹

Standard CHT-ICI combinations used were carboplatin/pemetrexed with pembrolizumab for non-squamous and carboplatin/paclitaxel with pembrolizumab for squamous-cell carcinomas.^{17,18} Few patients received carboplatin/paclitaxel and bevacizumab plus atezolizumab.¹⁹ According to our institutional standard proceedings, cisplatin was not used in these therapeutic regimens and CHT-ICI was routinely given for four cycles if tolerated. In maintenance therapy for patients having responded or stabilized on CHT-ICI, only the respective ICI but no CHT substance was applied. An earlier switch to maintenance mono-ICI could be performed if the treating physician deemed the continuation of combination therapy inappropriate due to CHT-associated toxicity. Treatment beyond radiological progression could be conducted in selected cases with significant clinical benefit.

Restaging was routinely conducted after every two cycles of CHT-ICI and after every three cycles of maintenance-ICI, examinations could be postponed due to symptoms suggesting disease progression or therapy-associated side-effects. Radiological response was routinely assessed by a CT scan of the chest and the upper abdomen using iodinated contrast medium unless contraindicated and additional imaging like cerebral magnetic resonance tomography if necessary, according to the clinician's judgement. For this study, radiological response was reevaluated by two expert thoracic radiologists and graded by response evaluation criteria in solid tumors (RECIST, version 1.1) for first response under CHT-ICI and first response under mono-ICI maintenance therapy (CR-complete remission, PR-partial remission, SD-stable disease, PD-progressive disease).²²

Routine blood sampling at primary lung cancer staging at our center includes analysis of CEA, CYFRA 21-1, CA19-9 and NSE. STM are not analyzed in hemolyzed blood samples according to the institutional standard laboratory proceedings. All STM initially elevated above the upper limit of normal are analyzed at every restaging together with imaging. For this study, STM analyses were conducted using a cobas e 801 immunoassay module

(Roche Diagnostics, Rotkreuz, Switzerland) and the corresponding ElectroChemiluminescence-ImmunoAssay (ECLIA) kits acquired from Roche. Upper limits of normal were 3.4ng/mL for CEA, 3.3ng/mL for CYFRA 21–1, 27U/mL for CA 19–9, and 16.3ng/mL for NSE. If more than one STM was available upon CHT-ICI initiation, the “leading” marker with the highest elevation in relation to the upper limit of normal was selected for follow-up. If none of the analyzed STM was elevated at CHT-ICI therapy initiation, the leading STM was determined as the one

with the highest value in relation to the upper limit of normal. STM response was expressed as fraction of resting versus baseline concentration.

Progression-free and overall survival were assessed separately for two individual therapeutic phases: From first CHT-ICI combination as well as from first mono-ICI-maintenance therapy application on to death or the date of the last verified contact. Disease progression was retrospectively defined by imaging and death, as well as by reviewing the relevant medical records. Therapy line was defined as treatment for non-curable (eg stage IV²⁰ or not otherwise treatable stage III) disease, whereas previous therapies in potentially curable stages were not considered. We excluded patients in clinical trials and patients who had previously received ICI treatment.

For each therapy phase, Kaplan-Meier-analyses for PFS and OS were conducted for all patients, as well as

Table I Baseline Patient and Tumor Characteristics

Mean age (SD)		62.9 (1.07)
Female sex (n, %)		33 (41.3)
Age categories (n, %)	<60 years	28 (35.0)
	60–69 years	34 (42.5)
	70–79 years	17 (21.3)
	80+ years	1 (1.3)
ECOG (n, %)	0	46 (58.2)
	1	22 (27.9)
	2	11 (13.9)
ICI substance (n, %)	Pembrolizumab	77 (96.3)
	Atezolizumab	3 (3.8)
Therapy line (n, %)	1	76 (95)
	2	1 (1.3)
	≥3	3 (3.8)
Median chemo-immunotherapy cycles (IQR)		4 (2)
Median mono-immunotherapy cycles (IQR)		3 (5,75)
Smoking status (n, %)	Never/<5 py	10 (12.5)
	≥5 py	70 (87.5)
Histological subtype (n, %)	Adenocarcinoma	62 (77.5)
	Squamous-cell carcinoma	18 (22.5)
Tumor stage (n, %)	III	7 (8.8)
	IV	73 (91.3)
PD-L1-status (n, %*)	positive	41 (54.7)
PD-L1 expression (n, %)	n.a.	5 (6.3)
	<1%	34 (42.5)
	1–49%	26 (32.5)
	≥50%	15 (18.6)
Targetable mutation (n, %)		3 (3.8)

Notes: Data are given as absolute number and percent within the respective group unless otherwise specified. *Percent of patients with PD-L1 status available.

Abbreviations: SD, standard deviation; ECOG, Eastern Cooperative Oncology Group; ICI, Immune checkpoint inhibitor; IQR, interquartile range; py, pack years; PD-L1, programmed death-ligand 1.

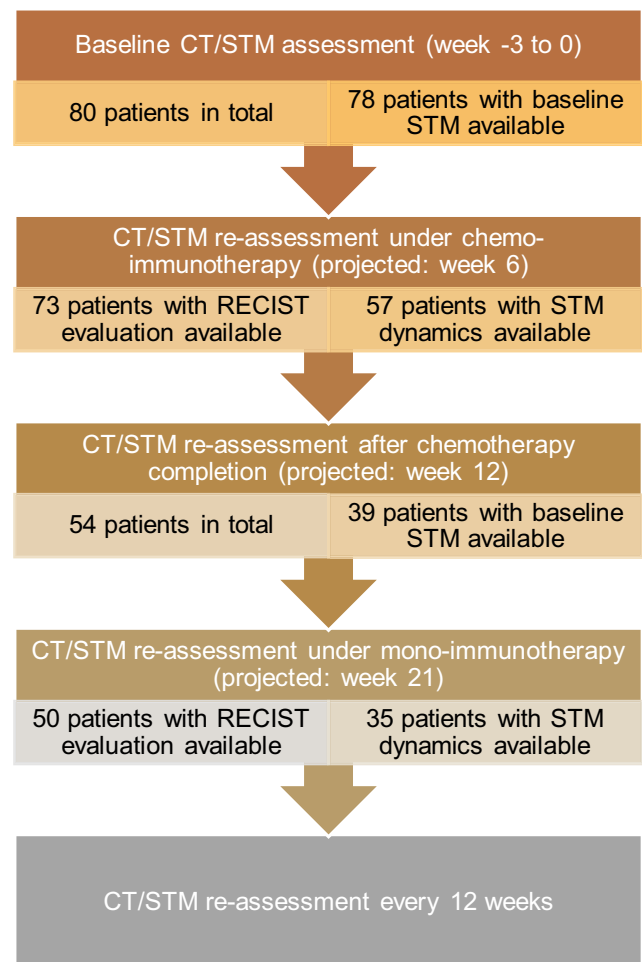


Figure 1 Flowchart depicting the evaluation schedule and the respective patient numbers.

Abbreviations: CT, computed tomography; STM, serum tumor marker; RECIST, response evaluation criteria in solid tumors.

according to the change in STM (decrease, increase) and to RECIST response criteria (CR/PR, SD, PD). Results were expressed as median in months (M) and 95% confidence interval (CI) unless otherwise specified. The resulting curves were compared using the Log rank test and a p -value < 0.05 was regarded statistically significant. Uni- and multivariate models for predictive factors for PFS and OS in both therapeutic phases were calculated using Cox-regression analyses. Next to RECIST and STM response, variables analyzed were age ($< \geq 70$ years), sex, Eastern Cooperative Oncology Group (ECOG) performance status (0,1, ≥ 2) and PD-L1 expression on tumor cells, determined using the 22C3 assay for Autostainer Link 48 by Dako (Agilent Technologies, Santa Clara, CA). A negative PD-L1 status was defined as membranous staining on $< 1\%$ of viable tumor cells.

Results

Eighty patients met the requirements to be included in the analysis. Baseline patient and tumor characteristics are shown in Table 1, the evaluation schedule including the respective patient numbers is shown in Figure 1.

In the CHT-ICI phase, baseline STM were available in 78 (97.5%) patients, whereas CEA was leading STM in 45 (56.3%), CYFRA21-1 in 21 (26.3%), CA19-9 in 7 (8.8%) and NSE in 5 (6.3%) patients. The leading STM was elevated above the upper limit of normal in 74 (92.5%) patients. Among the four others, two had CYFRA 21-1 as leading STM with no STM follow-up available at

re-staging and both had radiological PR. One patient had a decrease in CYFRA 21-1 with corresponding PR and one had a CA19-9 increase with radiological SD. Consecutive RECIST response evaluation was available in 73 (91.3%) patients, corresponding leading STM dynamics could be assessed in 57 (71.3%) patients.

A total of 54 (67.5%) patients received mono-ICI maintenance after CHT-ICI, 50 (62.5%) of them had a consecutive CT re-staging. Among those patients, baseline STM were available in 39 (48.8%), with CEA as the leading STM in 24 (30%), CYFRA 21-1 in 9 (11.3%), CA19-9 in 4 (5%) and NSE in 2 (2.5%) cases.

During the observational period, disease progression or death occurred in 56 (70%) patients, while 32 (40%) died. Overall median PFS from first CHT-ICI therapy on was 5M (4,9), median OS was 15M (10,). In the mono-ICI phase, median PFS was 6M (3,10), while median OS was not reached (10,). For the CHT-ICI as well as the mono-ICI phase, median PFS significantly differed between the RECIST and STM response categories. Median OS was not reached in most subgroups. (Table 2, Figure 2).

When separating individuals with radiological response (PR/CR) from those with stable or progressive disease (SD/PD), there was no relevant difference in PFS according to STM dynamics in CHT-ICI patients, however a significant difference was evident in the mono-ICI maintenance setting. Again, median OS was not reached in most subgroups. (Table 3, Figure 3, [supplementary figure 1](#))

Table 2 Progression-Free and Overall Survival According to Radiological Response and STM Response in the Respective Treatment Phases

Chemo-Immunotherapy		n	Median PFS (M, 95% CI)	p	Median OS (M, 95% CI)	P
CT response (RECIST)	PR	31	13 (9,)	<0.001	n.r. (15,)	0.01
	SD	28	5 (4,7)		n.r. (5,)	
	PD	14	3 (2,5)		6 (3,10)	
STM response	Decrease	41	9 (5,12)	0.042	15 (10,)	0.363
	Increase	16	5 (3,6)		n.r. (10,)	
Mono-immunotherapy		n	Median PFS (95% CI)	p	Median OS (95% CI)	P
CT response (RECIST)	CR/PR	9	n.r. (8,)	<0.001	n.r. (/,)	0.009
	SD	24	7 (4,16)		n.r. (7,)	
	PD	17	2 (1,3)		7 (2,)	
STM response	Decrease	16	16 (7,)	<0.001	n.r. (/,)	0.055
	Increase	22	3.5 (2,6)		n.r. (7,)	

Notes: Data are given as time in months (95% confidence interval). Testing for significance between the subgroups was accomplished using a Log rank test, a p value of < 0.05 was regarded statistically significant. Missing figures (/) are for values non assessable.

Abbreviations: PFS, progression-free survival; OS, overall survival; M, months; CI, confidence interval; CT, computed tomography; RECIST, response evaluation criteria in solid tumors; STM, serum tumor marker; CR, complete remission; PR, partial remission; SD, stable disease; PD, progressive disease.

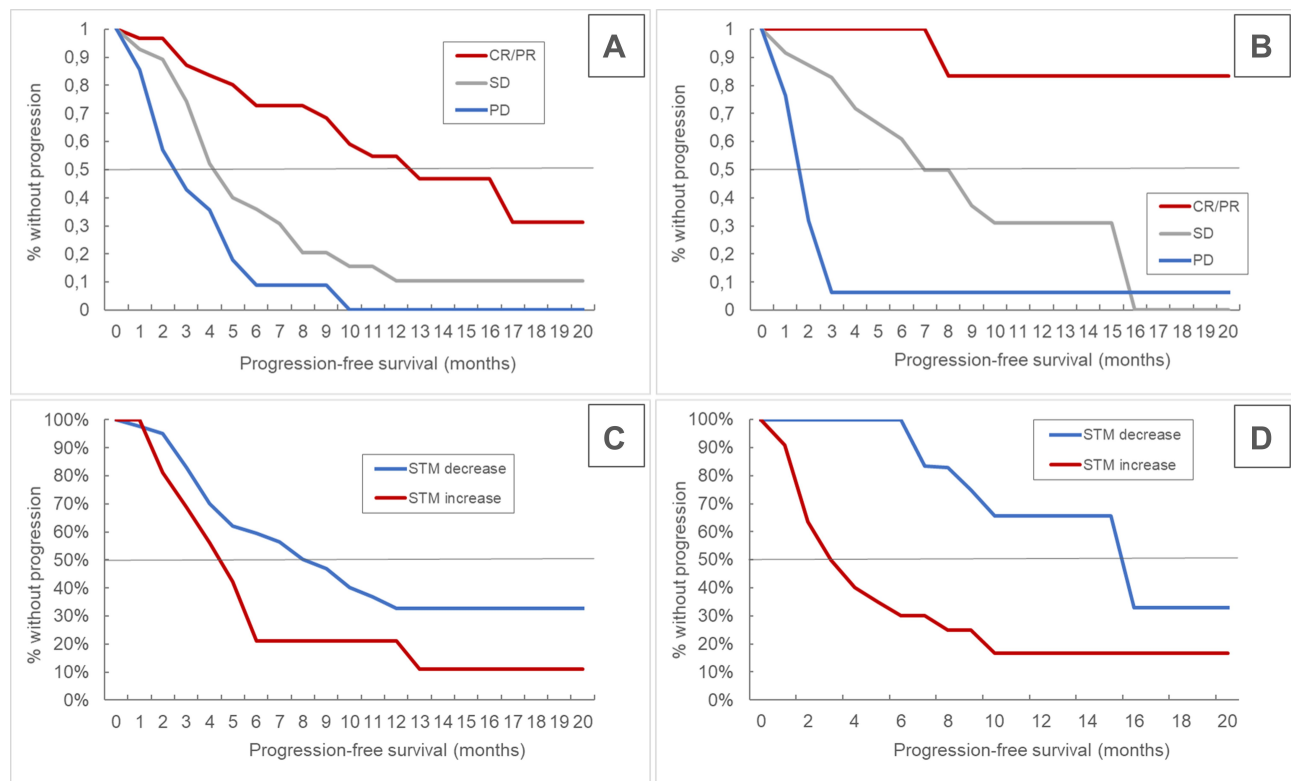


Figure 2 Kaplan-Meier curves for progression-free survival in the chemo-immunotherapy (A and C) and in the mono-immunotherapy maintenance phase (B and D) for RECIST- (A and B) and STM-response (C and D), respectively.

Abbreviations: RECIST, response evaluation criteria in solid tumors; CR, complete remission; PR, partial remission; SD, stable disease; PD, progressive disease; STM, serum tumor marker.

Univariate and stepwise multivariate Cox-regression analyses for variables influencing PFS and OS including RECIST and STM response are depicted in [supplementary table 1](#).

Discussion

Our analyses implicate that in chemoimmunotherapy for advanced NSCLC, leading STM dynamics

parallel radiological response. The results for the mono-ICI maintenance phase resemble our previously reported findings for ICI monotherapy and underline, that especially upon radiologically stable or progressive disease, a concomitant STM decrease may identify patients with further therapeutic benefit of ICI therapy.

Table 3 Progression-Free and Overall Survival According to Combined Radiological Response and STM Response in the Respective Treatment Phases

		Median PFS (M, 95% CI)					Median OS (M, 95% CI)				
		STM Response					STM Response				
Chemo-immunotherapy		N	Decrease	N	Increase	p	n	Decrease	n	Increase	p
CT response (RECIST)	CR/PR	24	n.r. (9,/)	2	9.5 (/,/)	<0.001	24	n.r. (15,/)	2	n.r. (/,/)	0.001
	SD/PD	16	4 (3,7)	14	4.5 (2,6)		16	7.5 (4,/)	14	n.r. (10,/)	
Mono-immunotherapy		N	Decrease	N	Increase	p	n	Decrease	n	Increase	p
CT response (RECIST)	CR/PR	5	n.r. (/,/)	3	n.r. (8,/)	<0.001	5	n.r. (/,/)	3	n.r. (/,/)	0.22
	SD/PD	10	13 (7,16)	17	3 (2,4)		10	n.r. (7,/)	17	n.r. (5,/)	

Notes: Data are given as time in months (95% confidence interval). Testing for significance between the subgroups was accomplished using a Log rank test, a p value of <0.05 was regarded statistically significant. Missing figures (/) are for values non assessable.

Abbreviations: PFS, progression-free survival; OS, overall survival; M, months; CI, confidence interval; N, number; STM, serum tumor marker; CT, computed tomography; RECIST, response evaluation criteria in solid tumors; CR, complete remission; PR, partial remission; SD, stable disease; PD, progressive disease.

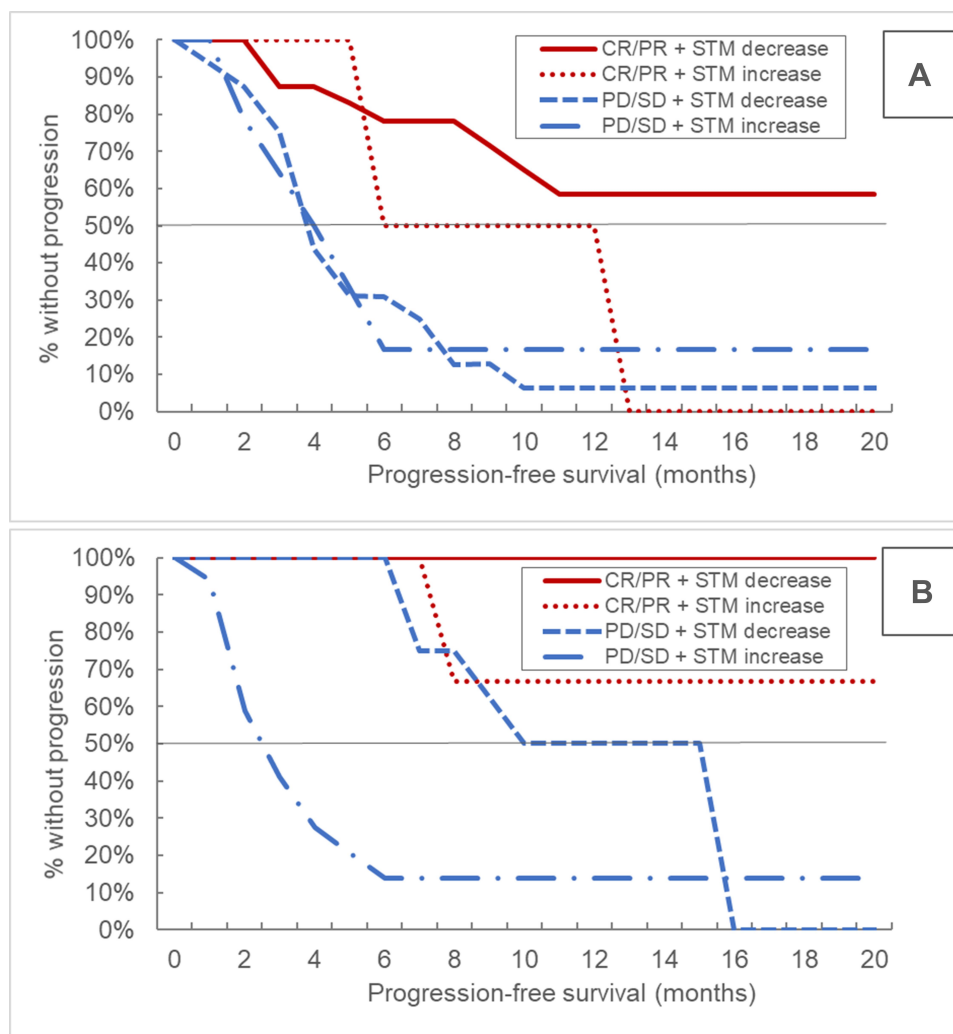


Figure 3 Kaplan-Meier curves for progression-free survival according to RECIST response categories and STM dynamics in the chemo-immunotherapy (A) as well as the mono-immunotherapy maintenance phase (B).

Abbreviations: RECIST, response evaluation criteria in solid tumors; CR, complete remission; PR, partial remission; SD, stable disease; PD, progressive disease; STM, serum tumor marker.

In line with our published findings concerning the utility of STM in mono-immunotherapy, we suggest that our model of a leading STM out of a panel of CEA, CYFRA 21-1, CA 19-9 and NSE may be a valuable additional tool in monitoring CHT-ICI patients. Importantly, the application of such blood-based biomarker does in no way challenge the gold standard of CT imaging in baseline evaluations as well as for restaging. Rather, STM could complement radiological assessment and may be especially helpful in situations when the clinician needs additional biomarker information upon ambiguous radiological response.

As an example, in a patient with insignificant progression of some lesions but with a clinical benefit of ICI therapy, a decrease in leading STM levels would clearly

encourage continuation of therapy. Conversely, simultaneous radiological tumor progression and STM increase would clearly speak against the possibility of pseudoprogression but should encourage a switch in the therapeutic regimen, as such situation is associated with inferior PFS and OS.

Although PFS differed between STM response categories for both CHT-ICI as well as the ICI monotherapy maintenance, our data suggest, that the predictive value of STM is considerably larger in the mono-ICI setting than in the combination phase. It is well known, that STM can be influenced by factors apart from malignancies, like infection, renal function impairment or trauma.²³⁻²⁶ Thus, it seems likely, that CHT and associated complications like neutropenia, infections or tumor response to CHT itself

may affect STM response and could explain the smaller effect on PFS in the CHT-ICI setting. Also, a majority of patients responded to CHT-ICI radiologically as well as concerning STM which leads to a clear imbalance in subgroups sample sizes that confines the validity of the reported results.

Next to the these mentioned limitations of sample size in subgroup analyses and the strengths concerning reproducibility of our previous results, several other issues need to be discussed that may limit the significance of our reported findings: Data were retrieved from a single-center, retrospective patient registry and the patient collective represents real-life situation: Not all patients received the full four cycles of CHT-ICI for reasons of toxicity (although median number of CHT/ICI cycles was four), which may have influenced PFS and OS analyses for both the CHT-ICI and the ICI maintenance therapy. On the other hand, however, as all patients received carboplatin and no patient received additional chemotherapy maintenance, bias due to these factors can be excluded. Overall survival could not be assessed in most subgroup analyses due to the small number of patients having died especially in well-responding subgroups, OS results therefore must only be interpreted cautiously. Also, the different CHT therapy regimens varied due to histological subtypes and have not been compared head-to-head in clinical trials, which may have caused bias to our results. Furthermore it is clear, that the patient cohort receiving ICI-maintenance therapy is not comparable to our previously reported patient collective receiving sole mono-immunotherapy in various therapy lines, as the present mono-ICI maintenance cohort consists of patients already selected by the directly previous CHT-ICI combination therapy and associated response or toxicity. It is therefore important to clarify, that it was not our aim to evaluate PFS and OS for either therapy phase, but rather to evaluate the utility of STM analyses in the therapeutic setting of chemo-immunotherapy in general.

Conclusions

At present, we believe that like in mono-ICI therapy, STM can also be a valuable dynamic biomarker in addition to CT imaging in patients receiving CHT-ICI combination therapy for advanced NSCLC. The clinical impact of STM dynamics may be considerably larger in the mono-ICI maintenance therapy setting than in initial CHT-ICI combination therapy. Future research

will likely provide new, possibly composite, biomarkers based on molecular tumor profiling as well as on the patients' immunological status. We suggest that STM should be included in such considerations, whereupon larger-scale and prospective, biomarker-driven clinical trials would be the next step warranted.

Data Sharing Statement

According to the terms imposed by the ethics committees, the full datasets analyzed during the current study cannot be made publicly available, as they contain possibly identifiable patient data. Upon reasonable request to the corresponding author and if approved as an amendment by the responsible local ethics committee, selected anonymized data can however be shared.

Ethics Approval and Informed Consent

This study was conducted in accordance with the Declaration of Helsinki and approved by the ethics committee of the federal state of Upper-Austria (EK Nr. 1139/2019).

The study was conducted in an entirely retrospective fashion, without an experimental approach or additional patient contact. Only patient data assessed in clinical routine were analyzed. Patient data were collected in an anonymized fashion and securely electronically stored in a way, that only the authors had access to the data. No identifiable patient data has been or will ever be published by the authors.

Thus, according to the ethic committee approval, no patient consent was necessary for participation in this study.

Consent for Publication

Due to the ethics committee approval and the study characteristics, no patient consent for publication was needed.

Acknowledgments

This publication was supported by Johanne Kepler Open Access Publishing Fund.

Author Contributions

All authors made a significant contribution to the work reported, whether that is in the conception, study design, execution, acquisition of data, analysis and interpretation, or in all these areas; took part in drafting, revising

or critically reviewing the article; gave final approval of the version to be published; have agreed on the journal to which the article has been submitted; and agree to be accountable for all aspects of the work.

Funding

No external funding was used in conducting the study or in writing of this manuscript.

Disclosure

DL has served as consultant/advisor to Roche and received travel/accommodation funding from Roche and Merck Sharp & Dohme, outside the submitted work. AH has received travel/accommodation funding from Roche, outside the submitted work. RW has received speakers' honoraria and travel/accommodation funding from and served as consultant/advisor to Roche, Merck Sharp & Dohme, and Bristol-Myers Squibb, and reports personal fees from Roche, Merck Sharp & Dohme, and Bristol Myers Squibb, outside the submitted work. EB has received speakers' honoraria from and served as consultant/advisor to Roche, Merck Sharp & Dohme, and Bristol-Myers Squibb; he has received travel/accommodation funding from Roche and Merck Sharp & Dohme. BL has received speakers' honoraria from and has served as consultant/advisor to Roche, Merck Sharp & Dohme and Bristol-Myers Squibb. The aforementioned authors report no other potential conflicts of interest for this work. WH, KA, MS, BH, CA and BK declare that they have no conflicts of interest that might be relevant to the contents of this manuscript.

References

- Cyriac G, Gandhi L. Emerging biomarkers for immune checkpoint inhibition in lung cancer. *Semin Cancer Biol.* 2018;52:269–277. doi:10.1016/j.semcancer.2018.05.006
- Planchard D, Popat S, Kerr K, et al. Metastatic non-small cell lung cancer: ESMO clinical practice guidelines for diagnosis, treatment and follow-up. *Ann Oncol.* 2018;29:iv192–iv237. doi:10.1093/annonc/mdy275
- Prelaj A, Tay R, Ferrara R, et al. Predictive biomarkers of response for immune checkpoint inhibitors in non-small-cell lung cancer. *Eur J Cancer.* 2019;106:144–159. doi:10.1016/j.ejca.2018.11.002
- Lee CK, Man J, Lord S, et al. Clinical and molecular characteristics associated with survival among patients treated with checkpoint inhibitors for advanced non-small cell lung carcinoma. *JAMA Oncol.* 2018;4:210. doi:10.1001/jamaoncol.2017.4427
- Borcoman E, Kanjanapan Y, Champiat S, et al. Novel patterns of response under immunotherapy. *Ann Oncol.* 2019;30:385–396. doi:10.1093/annonc/mdz003

- Chiu VL, Burotto M. Pseudoprogression and immune-related response in solid tumors. *J Clin Oncol.* 2015;33:3541–3543. doi:10.1200/JCO.2015.61.6870
- Ferrara R, Mezquita L, Texier M, et al. Hyperprogressive disease in patients with advanced non-small cell lung cancer treated with PD-1/PD-L1 inhibitors or with single-agent chemotherapy. *JAMA Oncol.* 2018;4:1543. doi:10.1001/jamaoncol.2018.3676
- Gandara DR, von Pawel J, Mazieres J, et al. Atezolizumab treatment beyond progression in advanced nscl: results from the randomized, phase iii oak study. *J Thorac Oncol.* 2018;13:1906–1918. doi:10.1016/j.jtho.2018.08.2027
- Noonan SA, Patil T, Gao D, et al. Baseline and on-treatment characteristics of serum tumor markers in stage iv oncogene-addicted adenocarcinoma of the lung. *J Thorac Oncol.* 2018;13:134–138. doi:10.1016/j.jtho.2017.08.005
- Holdenrieder S, Wehnl B, Hettwer K, et al. Carcinoembryonic antigen and cytokeratin-19 fragments for assessment of therapy response in non-small cell lung cancer: a systematic review and meta-analysis. *Br J Cancer.* 2017;116:1037–1045. doi:10.1038/bjc.2017.45
- de Jong C, Deneer VHM, Kelder JC, et al. Association between serum biomarkers CEA and LDH and response in advanced non-small cell lung cancer patients treated with platinum-based chemotherapy. *Thorac Cancer.* 2020;17:759–7714:13449.
- Kataoka Y, Hirano K, Narabayashi T, et al. Carcinoembryonic antigen as a predictive biomarker of response to nivolumab in non-small cell lung cancer. *Anticancer Res.* 2018;38:559–563.
- Shirasu H, Ono A, Omae K, et al. CYFRA 21-1 predicts the efficacy of nivolumab in patients with advanced lung adenocarcinoma. *Tumor Biol.* 2018;40:101042831876042. doi:10.1177/1010428318760420
- Dal Bello MG, Filiberti RA, Alama A, et al. The role of CEA, CYFRA21-1 and NSE in monitoring tumor response to Nivolumab in advanced non-small cell lung cancer (NSCLC) patients. *J Transl Med.* 2019;17:74. doi:10.1186/s12967-019-1828-0
- Lang D, Horner A, Brehm E, et al. Early serum tumor marker dynamics predict progression-free and overall survival in single PD-1/PD-L1 inhibitor treated advanced NSCLC—A retrospective cohort study. *Lung Cancer.* 2019;134:59–65. doi:10.1016/j.lungcan.2019.05.033
- Zhang Z, Yuan F, Chen R, et al. Dynamics of serum tumor markers can serve as a prognostic biomarker for Chinese advanced non-small cell lung cancer patients treated with immune checkpoint inhibitors. *Front Immunol.* 2020. doi:10.3389/fimmu.2020.01173.
- Gandhi L, Rodríguez-Abreu D, Gadgeel S, et al. Pembrolizumab plus chemotherapy in metastatic non-small-cell lung cancer. *N Engl J Med.* 2018;378:2078–2092. doi:10.1056/NEJMoa1801005
- Paz-Ares L, Luft A, Vicente D, et al. Pembrolizumab plus chemotherapy for squamous non-small-cell lung cancer. *N Engl J Med.* 2018;379:2040–2051. doi:10.1056/NEJMoa1810865
- Socinski MA, Jotte RM, Cappuzzo F, et al. Atezolizumab for first-line treatment of metastatic nonsquamous NSCLC. *N Engl J Med.* 2018;378:2288–2301. doi:10.1056/NEJMoa1716948
- Chansky K, Detterbeck FC, Nicholson AG, et al. The IASLC lung cancer staging project: external validation of the revision of the TNM stage groupings in the eighth edition of the TNM classification of lung cancer. *J Thorac Oncol.* 2017;12:1109–1121. doi:10.1016/j.jtho.2017.04.011
- McShane LM, Altman DG, Sauerbrei W, et al. Reporting recommendations for tumor marker prognostic studies. *J Clin Oncol.* 2005;23:9067–9072. doi:10.1200/JCO.2004.01.0454
- Eisenhauer EA, Therasse P, Bogaerts J, et al. New response evaluation criteria in solid tumours: revised RECIST guideline (version 1.1). *Eur J Cancer.* 2009;45:228–247. doi:10.1016/j.ejca.2008.10.026
- Chen J, Tao F, Zhang B, et al. Elevated squamous cell carcinoma antigen, cytokeratin 19 fragment, and carcinoembryonic antigen levels in diabetic nephropathy. *Int J Endocrinol.* 2017;2017:1–6. doi:10.1155/2017/5304391

24. Anderson BJ, Reilly JP, Shashaty MGS, et al. Admission plasma levels of the neuronal injury marker neuron-specific enolase are associated with mortality and delirium in sepsis. *J Crit Care.* 2016;36:18–23. doi:10.1016/j.jcrc.2016.06.012
25. Kwon Y-J, Lee H-S, Shim J-Y, et al. Serum carcinoembryonic antigen is positively associated with leukocyte count in Korean adults. *J Clin Lab Anal.* 2018;32:e22291. doi:10.1002/jcla.22291
26. Weber TH, Kerttula Y. Carcinoembryonic antigen (CEA) in blood in cases of pneumonia. *Scand J Infect Dis.* 1986;18:547–550. doi:10.3109/00365548609021660

Lung Cancer: Targets and Therapy

Dovepress

Publish your work in this journal

Lung Cancer: Targets and Therapy is an international, peer-reviewed, open access journal focusing on lung cancer research, identification of therapeutic targets and the optimal use of preventative and integrated treatment interventions to achieve improved outcomes, enhanced survival and quality of life for the cancer patient. Specific topics covered in the journal include: Epidemiology,

detection and screening; Cellular research and biomarkers; Identification of biotargets and agents with novel mechanisms of action; Optimal clinical use of existing anticancer agents, including combination therapies; Radiation and surgery; Palliative care; Patient adherence, quality of life, satisfaction; Health economic evaluations.

Submit your manuscript here: <http://www.dovepress.com/lung-cancer-targets-therapy-journal>