

Research article

Open Access

***Brucella suis* urease encoded by *ureI* but not *ure2* is necessary for intestinal infection of BALB/c mice**

Aloka B Bandara, Andrea Contreras, Araceli Contreras-Rodriguez, Ana M Martins, Victor Dobrean, Sherry Poff-Reichow, Parthiban Rajasekaran, Nammalwar Sriranganathan, Gerhardt G Schurig and Stephen M Boyle*

Address: Department of Biomedical Sciences & Pathobiology, Virginia Polytechnic Institute and State University, Blacksburg, Virginia 24061, USA

Email: Aloka B Bandara - abandara@vt.edu; Andrea Contreras - apcontreras@gmail.com; Araceli Contreras-Rodriguez - arcontre@vt.edu; Ana M Martins - amartins@vbi.vt.edu; Victor Dobrean - vdobrean@vt.edu; Sherry Poff-Reichow - spoff@vt.edu; Parthiban Rajasekaran - parthi@vt.edu; Nammalwar Sriranganathan - nathans@vt.edu; Gerhardt G Schurig - gschurig@vt.edu; Stephen M Boyle* - smb Boyle@vt.edu

* Corresponding author

Published: 19 June 2007

Received: 9 August 2006

BMC Microbiology 2007, 7:57 doi:10.1186/1471-2180-7-57

Accepted: 19 June 2007

This article is available from: <http://www.biomedcentral.com/1471-2180/7/57>

© 2007 Bandara et al; licensee BioMed Central Ltd.

This is an Open Access article distributed under the terms of the Creative Commons Attribution License (<http://creativecommons.org/licenses/by/2.0>), which permits unrestricted use, distribution, and reproduction in any medium, provided the original work is properly cited.

Abstract

Background: In prokaryotes, the ureases are multi-subunit, nickel-containing enzymes that catalyze the hydrolysis of urea to carbon dioxide and ammonia. The *Brucella* genomes contain two urease operons designated as *ureI* and *ure2*. We investigated the role of the two *Brucella suis* urease operons on the infection, intracellular persistence, growth, and resistance to low-pH killing.

Results: The deduced amino acid sequence of urease- α subunits of operons-1 and -2 exhibited substantial identity with the structural ureases of alpha- and beta-proteobacteria, Gram-positive and Gram-negative bacteria, fungi, and higher plants. Four *ure* deficient strains were generated by deleting one or more of the genes encoding urease subunits of *B. suis* strain 1330 by allelic exchange: strain 1330 Δ *ureI*K (generated by deleting *ureD* and *ureA* in *ureI* operon), strain 1330 Δ *ure2*K (*ureB* and *ureC* in *ure2* operon), strain 1330 Δ *ure2*C (*ureA*, *ureB*, and *ureC* in *ure2* operon), and strain 1330 Δ *ureI*K Δ *ure2*C (*ureD* and *ureA* in *ureI* operon and *ureA*, *ureB*, and *ureC* in *ure2* operon). When grown in urease test broth, strains 1330, 1330 Δ *ure2*K and 1330 Δ *ure2*C displayed maximal urease enzyme activity within 24 hours, whereas, strains 1330 Δ *ureI*K and 1330 Δ *ureI*K Δ *ure2*C exhibited zero urease activity even 96 h after inoculation. Strains 1330 Δ *ureI*K and 1330 Δ *ureI*K Δ *ure2*C exhibited slower growth rates in tryptic soy broth relative to the wild type strain 1330. When the BALB/c mice were infected intraperitoneally with the strains, six weeks after inoculation, the splenic recovery of the *ure* deficient strains did not differ from the wild type. In contrast, when the mice were inoculated by gavage, one week after inoculation, strain 1330 Δ *ureI*K Δ *ure2*C was cleared from livers and spleens while the wild type strain 1330 was still present. All *B. suis* strains were killed when they were incubated *in-vitro* at pH 2.0. When the strains were incubated at pH 2.0 supplemented with 10 mM urea, strain 1330 Δ *ureI*K was completely killed, strain 1330 Δ *ure2*C was partially killed, but strains 1330 and 1330 Δ *ure2*K were not killed.

Conclusion: These findings suggest that the *ureI* operon is necessary for optimal growth in culture, urease activity, resistance against low-pH killing, and *in vivo* persistence of *B. suis* when inoculated by gavage. The *ure2* operon apparently enhances the resistance to low-pH killing *in-vitro*.

Background

A number of environmentally and medically important bacteria produce the enzyme urease (urea amidohydrolase) [1], which catalyzes the hydrolysis of urea, leading to the production of carbamate and ammonia. In an aqueous environment, the carbamate rapidly and spontaneously decomposes to yield a second molecule of ammonia and one of carbonic acid. The carbonic acid equilibrates in water, as do the two molecules of ammonia, which become protonated to yield ammonium hydroxide ions. The reaction results in an increased pH of the environment [reviewed in [2-5]]. In sites where microorganisms colonize epithelial surfaces, such as the normal flora of the oral cavity or intestines, or when certain pathogenic bacteria infect tissues, the metabolism of urea by microbial ureases can have a profound impact on tissue integrity, microbial ecology, and the overall health of the host.

The ureases of most microbes are composed of three subunits α , β , and γ that are encoded by *ureA*, *ureB* and *ureC* genes respectively. The plant jack bean produces a single-subunit urease [12], whereas, in gastroduodenal pathogen *H. pylori*, the *ureA* and *ureB* genes are sufficient to encode urease. Nevertheless the UreAB subunits of *H. pylori* can be aligned with the UreABC subunits of other ureolytic bacteria and with the single polypeptide of the jack bean urease. The crystal structure of the *Klebsiella aerogenes* urease reveals a trimeric configuration [13]. Biochemical analyses of ureases by gel filtration have shown that other bacterial ureases are multimeric and probably have similar stoichiometry [4].

Ureases are structurally complex enzymes, and additional urease subunits are required for the production of a catalytically active holoenzyme *in-vivo*. Ureases are among the few enzymes that require nickel for activity. Biogenesis of a functional urease in prokaryotes requires the presence and expression of four urease accessory genes, *ureDEFG*. *In vitro* experiments using purified accessory proteins support the idea that UreE likely acts as a carrier of nickel [14] and that UreDFG form a chaperone-like complex that keeps the apoenzyme in a configuration competent to accept nickel [15].

Urease activity can be a critical factor in the colonization, persistence and pathogenesis of bacteria. Considering the products produced by urease, it would be logical to assume that one of the enzyme's functions is to allow nitrogen assimilation. In fact, urea represents an assimilable nitrogen source for bacteria that can colonize the human body and there is evidence suggesting that ammonia assimilation from urea occurs *in-vivo*. A significant proportion of the urea produced in the liver ends up in the intestines, where it can be hydrolyzed and assimilated by

several different species of anaerobic, ureolytic bacteria [3]. Similarly, the oral bacterium, *Actinomyces naeslundii* can use urea as a primary nitrogen source for growth [6]. So there is little doubt that nitrogen acquisition as the result of urease activity can be important in the ecology of complex populations colonizing the human body. However, it is an open question as to whether the capacity to assimilate ammonia produced by urease contributes to the pathogenic potential of bacteria. Instead, it appears that the release of the strongly alkaline ammonia released by urease is a major cause of the damage to the host tissue, and in some cases, a key factor in persistence of pathogens [reviewed in [2]]. Jubier-Maurin *et al.*, (30) identified the *nikABCDE* operon encoding the specific transport system for nickel in *B. suis*. Insertional inactivation of *nikA* strongly reduced the activity of the nickel metalloenzyme urease, which was restored by addition of nickel excess. Intracellular growth rates of the *B. suis* wild-type and *nikA* mutant strains in human monocytes were similar, indicating that *nikA* was not essential for this type of infection.

The Brucellae are gram-negative, facultative intracellular bacterial pathogens of a wide range of vertebrates [7]. This pathogen is the etiologic agent of the disease brucellosis and the pathological manifestations of brucellosis include abortion and sterility in animals [7], and meningitis, endocarditis, spondylitis and arthritis in humans [8]. Paulsen *et al.*, [9] annotated the genome of *B. suis* strain 1330 (biovar 1), and discovered that unlike many other organisms, *Brucella* have two urease gene operons located on chromosome I (GenBank accession no. [NC_004310](#)). Urease activity is important for the nitrogen assimilation and persistence of other bacterial species like *Helicobacter pylori* [10,11]. We investigated the role of the two *B. suis* urease operons on the infection, intracellular persistence, growth, and resistance to low-pH killing. We report that the *B. suis* *ure1* operon, in contrast to *ure2*, appears to be principally responsible for determining urease activity, optimum growth and resistance to low-pH killing *in-vitro* and persistence *in-vivo*.

Results

Organization, and nucleotide and amino acid sequences of urease genes

The *ure1* and *ure2* operons are located on the chromosome I of *B. suis* strain 1330 (GenBank accession number [NC_004310](#)). The *ure1* operon is 5284-bp long and composed of seven coding sequences (CDS). The *ure2* operon is 6571-bp long and comprised eight CDS (Figure 1). The *ureA* gene was the same in size in both operons (302-bp). All the other genes of *ure2* operon were slightly longer than their counterparts in *ure1* operon. The *ureC* gene was the longest in each operon (1712-bp in operon-1 and 1721-bp in operon-2). The G+C content of each *ure* gene was compared with that of its counterpart of the other

operon and found not differ substantially between *ure* genes of operon-1 and operon-2 (Table 1). The identity of each *ure* gene was compared with that of its counterpart of the other operon. The *ureA*, *ureB*, *ureC*, and *ureG* genes of the two operons exhibited 52 to 60% identity, whereas the *ureD*, *ureE*, and *ureF* genes did not share significant identity (Table 1).

The deduced amino acid sequences encoded by the *ureA*, *ureB*, and *ureC* genes in both operons displayed great identity with the structural urease subunits of a vast range of organisms including Gram-positive bacteria, Gram-negative bacteria, photosynthetic bacteria, fungi, and higher plants (see Table 5). For instance, urease subunits of other organisms exhibited up to 81% identity with the UreC of *ure1* and up to 69% identity with the UreC of *ure2*. The ureases of alpha and beta-proteobacteria exhibited the greatest identity with UreC of operon-1, whereas, the ureases of all species of *Yersinia* exhibited the greatest identity with the UreC of operon-2.

Real-time PCR assays produced amplicons in sizes exactly similar to the expected sizes for each *ure* gene (data not shown). The UreB subunit in the *ure2* operon contains a predicted hydrophobic signal sequence and suggests that the subunit may localize in the periplasmic space. All other Ure subunits lack any signal sequences and were predicted to localize in the cytoplasm (data not shown).

Genomic characterization of generated mutant *B. suis* strains

Four mutant *B. suis* strains were generated by allelic exchange, i.e., 1330 Δ *ure1K*, 1330 Δ *ure2K*, 1330 Δ *ure2C*, and 1330 Δ *ure1K* Δ *ure2C*. The PCR assays produced a predicted 2.2-kb amplicon from the wild type *B. suis* strain 1330 and an approximately 3.2-kb amplicon from the mutant strain 1330 Δ *ure1K* with the *ureONE*-Forward and *ureONE*-Reverse primers (see Table 6); a predicted 2.2-kb-size amplicon from the strain 1330 and an approximately 2.8-kb product from strain 1330 Δ *ure2K* with *ureTWO*-Forward and *ureTWO*-Reverse primers; and a predicted 2.9-kb-size amplicon from the strain 1330 and an approximately 3.4-kb product from strain 1330 Δ *ure2C* with primers Ure-2-AB-Forward and Ure-2-AB-Reverse. The PCR assays with the primer pairs *ureONE*-Forward/*ureONE*-Reverse and Ure-2-AB-Forward/Ure-2-AB-Reverse confirmed that the double-mutant strain 1330 Δ *ure1K* Δ *ure2C* carried a 575-bp deletion from the *ure1DA* region and a 1.2-kb deletion from the *ure2ABC* region (Figures 1A and 1B).

Expression of urease, urease enzyme activity and growth rates of *B. suis* strains

Native polyacrylamide gel electrophoresis revealed urease activity at approximately 95-kDa from strains 1330,

1330 Δ *ure2K* and 1330 Δ *ure2C*, but not from strains 1330 Δ *ure1K* or 1330 Δ *ure1K* Δ *ure2C* (Figure 2).

In a quantitative urease assay, mutants 1330 Δ *ure1K* and 1330 Δ *ure1K* Δ *ure2C* exhibited 0 activity, the wild type and the mutant 1330 Δ *ure2K* displayed maximal activity, and mutant 1330 Δ *ure2C* showed slightly reduced activity (Table 2). In qualitative urease assay, urease test broth started turning positive within 4 h after either strain 1330, 1330 Δ *ure2K*, or 1330 Δ *ure2C* were introduced, and acquired a bright pink color after approximately 24 h (Figure 3 and Table 2). In contrast, strains 1330 Δ *ure1K* and 1330 Δ *ure1K* Δ *ure2C* failed to cause a pink color in the urease test broth even after 96 h of incubation (Figure 3 and Table 2).

Strains 1330 Δ *ure1K* and 1330 Δ *ure1K* Δ *ure2C*, both urease negative, grew approximately 25% slower than wild type strain 1330. In contrast, strains 1330 Δ *ure2K* and 1330 Δ *ure2C*, both urease positive, did not display any measurable differences in growth rate compared to strain 1330 (Table 2).

Survival of *B. suis* strains in macrophage cell lines

When used to infect J774A.1 or H36.12a [Pixie 12a] mouse macrophage cell lines, the recovery of all the *B. suis* strains declined 2–3 log₁₀ cfu between 0 and 4 h post-inoculation. During the next 20 h, all the *B. suis* strains increased 1–2 log₁₀ cfu. There were no significant differences between the wild type and the urease mutant strains in terms of their ability to replicate in macrophages (data not shown).

Survival of *B. suis* strains in BALB/c mice

Following an intraperitoneal inoculation, the recovery of *ure* mutants from spleens did not differ from the wild type strain at 6 wks post-infection (Table 3). When the mice were inoculated by gavage, one week after inoculation, strain 1330 was recovered from spleens (Figure 4) as well as from livers (Figure 5). When the mice were inoculated with strain 1330 supplemented with 10 mM urea, nearly 2.2 log₁₀ greater cfu was recovered from spleens and nearly 3.5 log₁₀ greater cfu was recovered from livers. However, when the mice were inoculated with strain 1330 Δ *ure1K* Δ *ure2C*, with or without urea supplementation, no cfu were recovered from spleens (Figure 4) but nearly 2.5 log₁₀ cfu was recovered from livers only when the inoculum was supplemented with 10 mM urea (Figure 5).

Resistance of *B. suis* strains against low-pH killing

The wild type and the *ure* mutants did not differ with respect to the survival after 90 min incubation at pH 4.0 or 7.0 (data not shown). All the strains including the wild type were killed when incubated at pH 2.0 for 90 min

Table 1: Sequence identities between the two *B. suis* urease operons

Gene	G+C Content		Gene comparison	Identity (%)
	Operon-1	Operon-2		
<i>ureA</i>	60.3	57.3	<i>ure1A</i> vs <i>ure2A</i>	52
<i>ureB</i>	58.4	58.1	<i>ure1B</i> vs <i>ure2B</i>	60
<i>ureC</i>	60.4	59.3	<i>ure1C</i> vs <i>ure2C</i>	55
<i>ureD</i>	62.0	58.1	<i>ure1D</i> vs <i>ure2D</i>	23
<i>ureE</i>	59.3	58.9	<i>ure1E</i> vs <i>ure2E</i>	Not significant
<i>ureF</i>	63.3	59.1	<i>ure1F</i> vs <i>ure2F</i>	Not significant
<i>ureG</i>	57.4	56.5	<i>ure1G</i> vs <i>ure2G</i>	54
<i>ureT</i>	-	60.4	-	-

(Figure 6). When the strains were supplemented with 5 mM urea during incubation at pH 2.0, more than 6.0 log₁₀ cfu of strains 1330 and 1330Δ*ure2K* were recovered. In comparison to strain 1330, the recovery of the strain 1330Δ*ure2C* was nearly 1.5 log₁₀ lower at 5 mM urea concentration and nearly 1.0 log₁₀ lower at 10 mM urea. In contrast to strains 1330, 1330Δ*ure2K* and 1330Δ*ure2C*, strain 1330Δ*ure1K* was not recovered after incubation at pH 2.0 supplemented at any urea concentration (Figure

6). Addition of urea did not change the pH of the incubation media.

Discussion

The *ureA*, *ureB*, and *ureC* genes of *B. suis* (Figure 1) encode the γ, β, and α subunits respectively, and the urease holoenzyme of *B. suis* is likely to be assembled in a trimeric configuration. The total predicted mass of the *B. suis* urease holoenzyme (UreA+B+C) is 91-kDa. The native

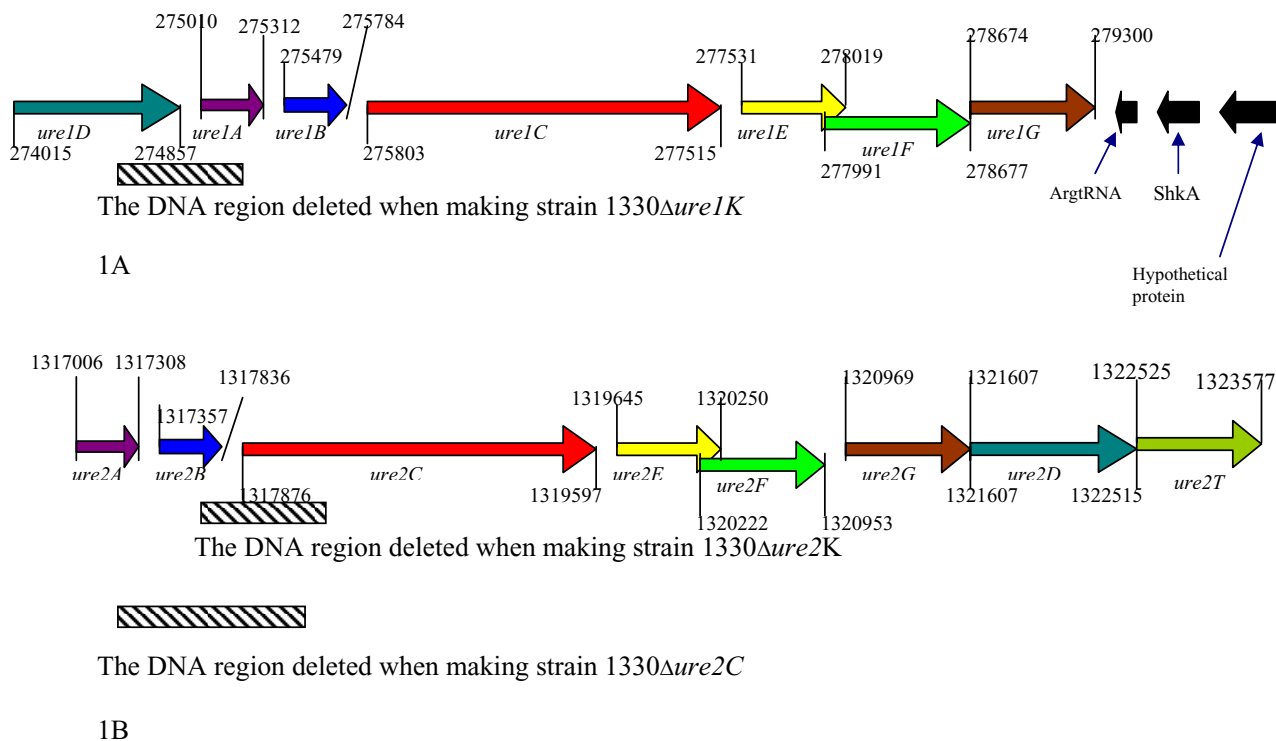


Figure 1
 The schematic representations of the *ure* operons with corresponding Ure subunits, and deletion sites of mutant strains 1330Δ*ure1K*, 1330Δ*ure2K* and 1330Δ*ure2C*. A: *ure1* operon. B: *ure2* operon. The numbers represent the location of the genes in the chromosome I.

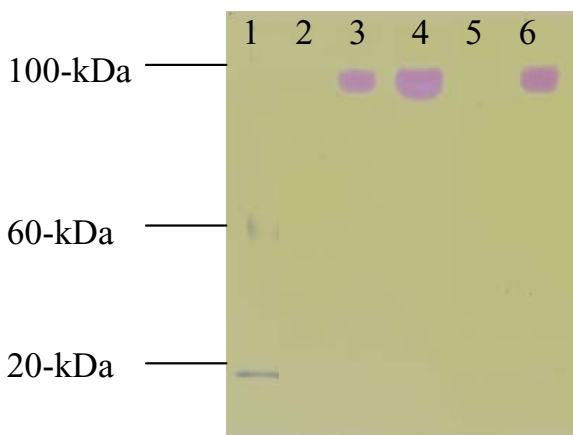


Figure 2
Native 8% polyacrylamide gel assay with *B. suis* extracts. Lanes-1: ladder; 2: *B. suis* strain 1330Δure1K; 3: strain 1330Δure2K; 4: strain 1330Δure2C; 5: strain 1330Δure1KΔure2C; and 6: strain 1330.

polyacrylamide gel reveals urease activity at approximately 95-kDa (Figure 2) and supports a trimeric configuration of this enzyme. The *Brucella* genome also contains *ureDEFG* genes (Figure 1) in each of *ure1* and *ure2* operons and are predicted to produce the UreD, UreE, UreF and UreG proteins. Unlike many other microorganisms, *Brucella* contains two operons encoding urease subunits (Figure 1) located on the chromosome I. Based on the similarities of G+C contents among genes in *ure1* and *ure2* operons, it is unlikely that any of the operons were acquired by horizontal gene transfer. The genes of the *ure1* operon shared less than 60% identity with their counterparts of the *ure2* operon (Table 1). In particular, the *ureE* and *ureF* genes of the *ure1* operon did not share considerable similarity with those genes in the *ure2* operon. Based on the relatively low identity among genes between *ure1*

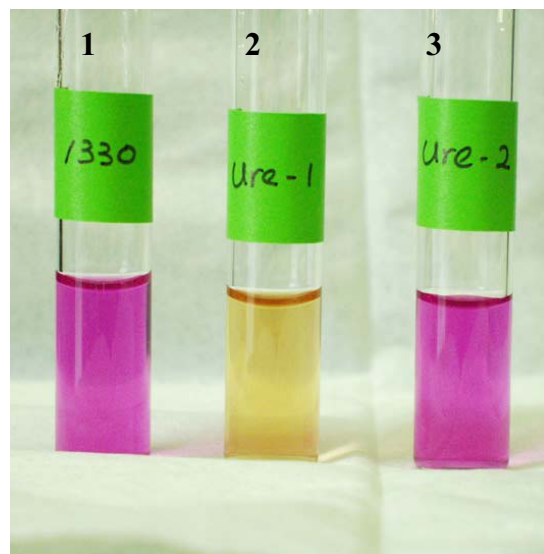


Figure 3
Urease test broth 24 hours after inoculation with *B. suis* strains. Tube-1: strain 1330 (positive), 2: 1330Δure1K (negative), and 3: 1330Δure2K (positive).

and *ure2* operons, it seems unlikely that they were the result of a recent duplication event. However, further analyses are required to confirm these predictions.

We generated a series of mutants by disrupting the first few genes encoding structural subunits of each urease. All seven genes of *ure1* operon appear to be transcribed in a single direction. The gaps between individual *ure* genes are extremely small (Figure 1), so that all or most of the genes are possibly expressed under a single, common promoter – leading to a polycistronic mRNA. The *ureG* is the last gene of the *ure1* operon. All three genes downstream of the *ureG* are transcribed in the opposite direction, from the complementary strand (Figure 1). The closest non-*ure*

Table 2: *B. suis* strains: generation time (doubling time, h) in TSB and urease activity in urease test broth.

Strain	Doubling time (h)*	Urease activity	
		Qualitative**	Quantitative***
1330	5.1	+	9.28
1330Δure1K	5.8	-	~0
1330Δure2K	5.3	+	9.38
1330Δure2C	5.1	+	8.28
1330Δure1K1330Δure2C	6.5	-	~0

*A representative experiment was used to calculate the generation time.

** + represents positive or pink color and – represents negative or yellow color of the uninoculated test broth; the color remained unchanged even 96 h after inoculation

***Specific activity μmoles/min/mg of protein.

Table 3: Splenic recovery of *B. suis* strains six weeks after intraperitoneal inoculation in BALB/c mice

Strain	Injected dosage (log ₁₀ cfu/mouse)	cfu 6 weeks after inoculation (log ₁₀ /spleen) ^a
<u>Trial-1</u>		
I330 (wild)	5.24	4.41 ± 0.18†
I330Δ <i>ure1</i> K	5.24	4.61 ± 0.20†
I330Δ <i>ure2</i> K	5.22	4.40 ± 0.18†
I330Δ <i>ctpA</i> (control)	5.25	2.04 ± 0.89‡
<u>Trial-2</u>		
I330 (wild)	4.11	4.25 ± 0.23
I330Δ <i>ure2</i> C	4.16	4.17 ± 0.25
I330Δ <i>ure1</i> KΔ <i>ure2</i> C	4.28	4.19 ± 0.31

^aIn Trial-1: *P* value for the difference among mean values was <0.005. The mean value of a strain designated by a dagger (†) is significantly different from the mean value of a strain designated by a double dagger (‡) but is not significantly different between strains designated by the same symbol. In Trial-2: The observed significance level among mean values was < 0.1 < *P* < 0.9.

gene to *ureG* encodes an Arg-tRNA. The genes downstream of this tRNA gene encode a serine histidine kinase (CDS *Shk*) and a hypothetical protein. The distance from the stop codon of *ureG* to the stop codon of Arg-tRNA (transcribed in opposite direction) is 124-bp. Thus it does not seem likely that the insertion of the antibiotic resistance gene into *ure1* influences the expression of genes downstream of the operon. In addition, it is not apparent that these genes have any regulatory role on urease expression.

The deletion of genes within the *ure1* operon caused the disappearance of urease activity on a native polyacrylamide gel (Figure 2). Even though the *ure2* operon was present in the *ure1* mutant, it failed to produce urease activity as measured by either of two assays. In addition, a disruption of the *ure2* operon did not have any impact on production of a detectable urease activity.

The deletion of genes within the *ure1* operon caused the slower growth and loss of urease activity (Table 2) suggest-

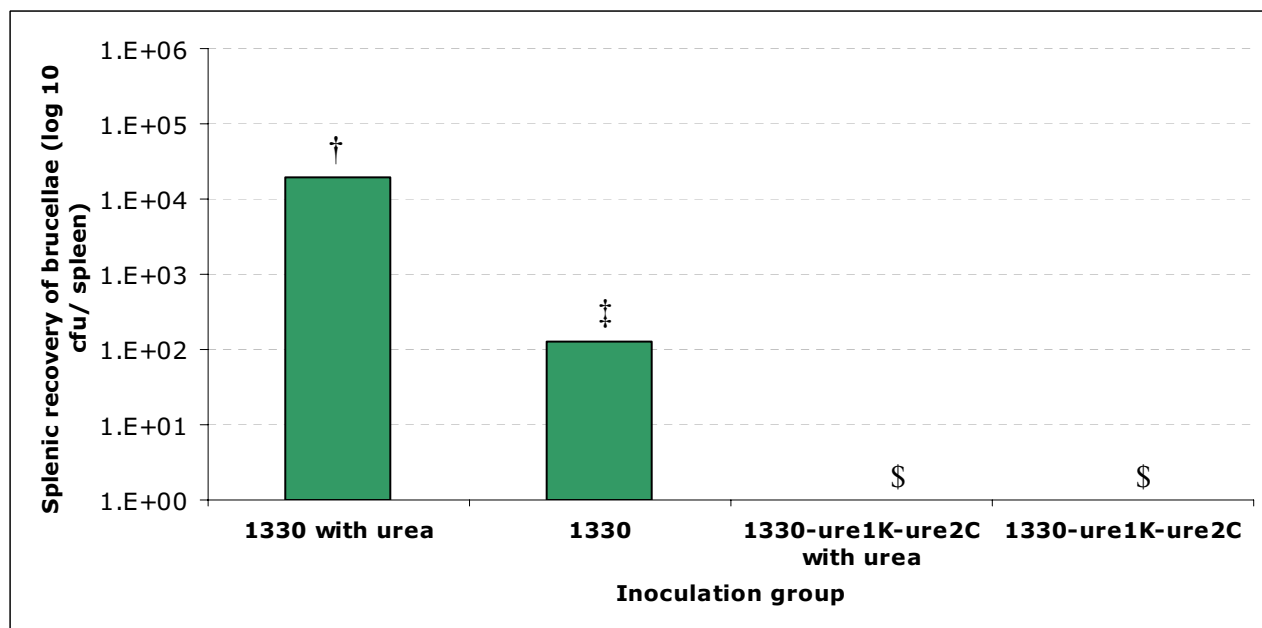


Figure 4

Recovery of *Brucella* cfu from spleens one week after BALB/c mice were inoculated by gavage with wild type strain I330 or strain I330Δ*ure1*KΔ*ure2*C with or without urea supplementation. *P* value for the difference among mean values was <0.01. The mean values that share the same symbol do not differ from one another significantly; and the mean values designated by different symbols differ from one another significantly.

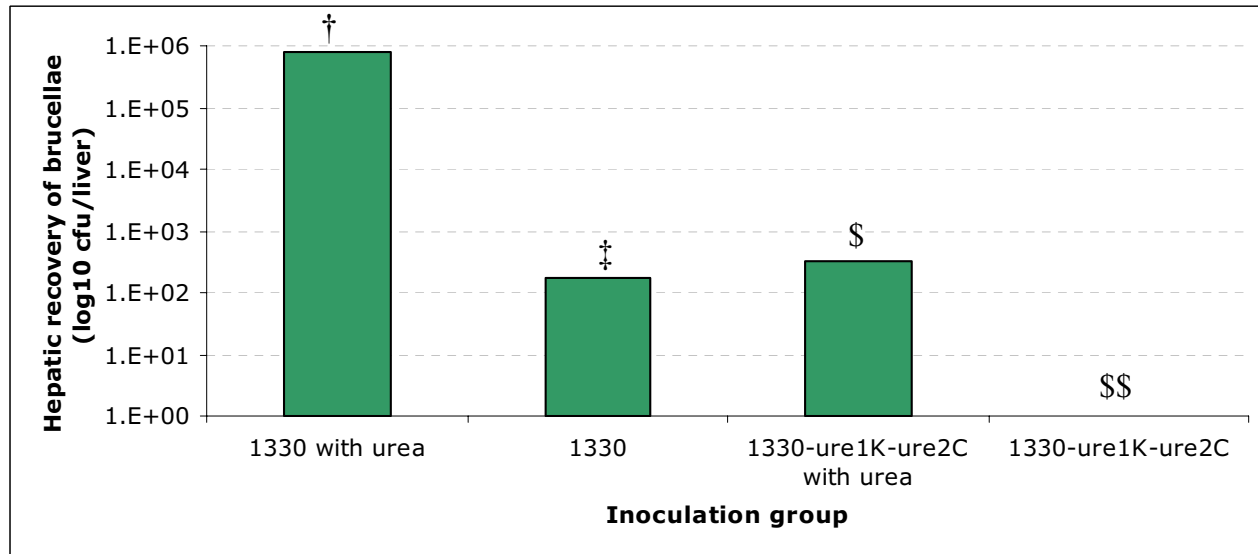


Figure 5

Recovery of *Brucella* cfu from livers one week after BALB/c mice were inoculated by gavage with the wild type strain 1330 or strain 1330 Δ ure1K Δ ure2C with or without urea supplementation. *P* value for the difference among mean values was <0.025. The mean values that share the same symbol do not differ one another significantly; and the mean values designated by different symbols differ one another significantly.

ing that the genes are necessary for maximal growth and urease activity of *B. suis*. Strains 1330 Δ ure2K and 1330 Δ ure2C made by deleting genes of *ure2* operon did not display any change in growth rate or urease activity, suggesting that the genes of *ure2* operon are not required for these functions. Overall, *B. suis* is apparently capable of exhibiting urease activity even without involvement of *ure2* operon. This observation raises the question as to whether the genes within *ure2* are actually being expressed. Our measurements using RT-PCR of RNA extracted from *B. suis* 1330 cultured in TSB (data not shown) suggest that all the genes in *ure2* are being expressed. It is apparent that much more work will have to be done to determine the role of the *ure2* operon. Except for a detectable role in resistance to acidic pH *in-vitro*, there were no other detectable phenotypes associated with the *ure2* mutants under the various conditions employed. One obvious question is whether there is any post-translational interaction going on between the subunits of both *ure* operons. Given that there is no urease activity in an *ure1* mutant, it is possible to conclude that the corresponding Ure2 subunits are not acting to restore Ure1 activity.

In addition to the ureolytic bacteria [3] that can use urea as a primary nitrogen source for growth, the urinary tract

pathogen *Ureaplasma ureolyticum* [16] and some alkalophilic bacteria [17] can use ureolysis to generate ATP. Urea, particularly at millimolar concentrations can readily enter the cell [4]. Thus, in bacteria that utilize urea for nitrogen assimilation or ATP generation, the urease activity is expected to occur intracellularly. In most organisms, the ureases are found in the cytoplasm, although there is a report of urease membrane association and cell surface localization as well [4]. The ureases for which primary sequence information is available do not have characteristics consistent with being integral membrane proteins or secreted through the general secretory pathways. Consistent with the ureases of other bacteria, the deduced *B. suis ure* encoded subunits (with exception of UreB encoded by the *ure2* operon) are predicted to localize in the cell cytoplasm (data not shown). Thus it may be possible that urease functions within the cytoplasm in order to assimilate nitrogen. Further work is needed to characterize the exact location of urease subunits and whether they play a role in nitrogen uptake.

The *ure* mutants did not exhibit any decline in persistence in BALB/c mice when inoculated intraperitoneally (Table 3), suggesting that the urease activity is not critical once the pathogen has entered the host. Using *ure* mutants of *Bordetella bronchiseptica*, Monack and Falkow [18]

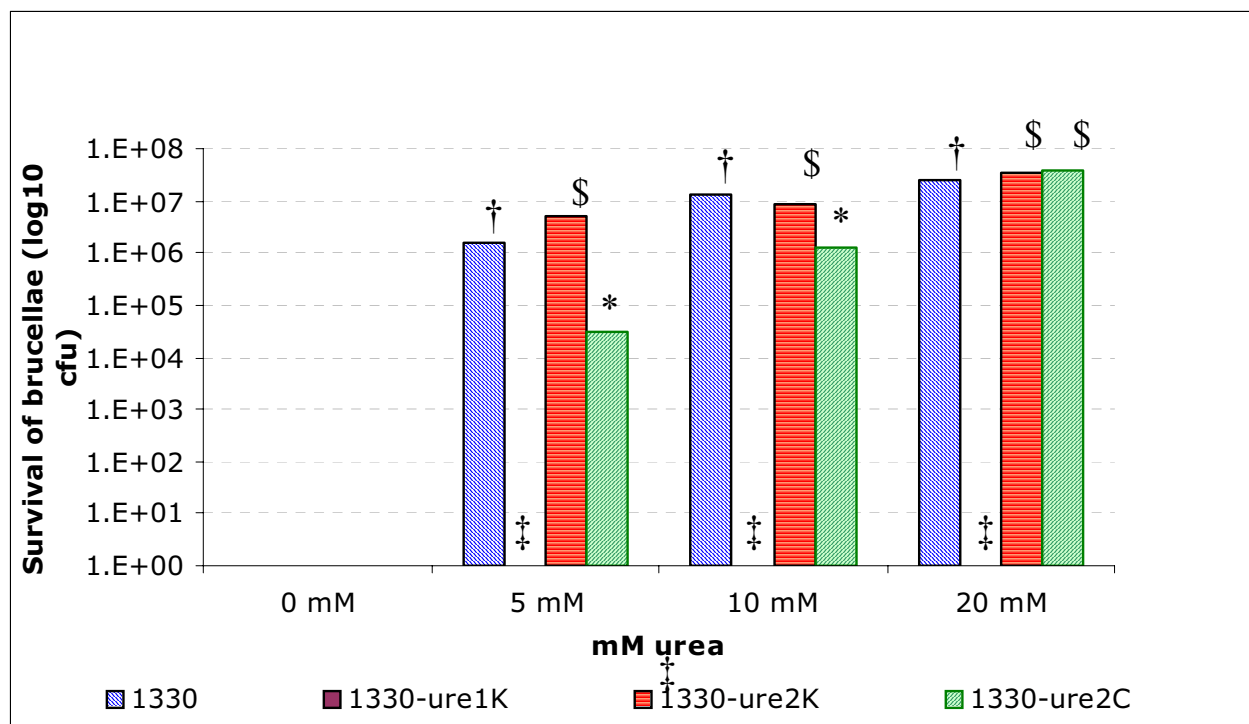


Figure 6

Survival of *B. suis* strains 1330, 1330 Δ ure1K, 1330 Δ ure2K, and 1330 Δ ure2C after incubation at pH 2.0 with or without urea. At each urea concentration, the *P* value for the difference among mean cfu was <0.005. At each urea concentration, the mean values designated by different symbols differ one from another significantly; and the mean values that share the same symbol do not differ one from another significantly.

reported that urease is not essential for the colonization of the guinea-pig respiratory and digestive tracts. One of the common ways that humans acquire brucellosis is through consumption of contaminated milk. *Brucella* needs to have a mechanism to resist the low-pH killing in the gastrointestinal tract. When the mice were inoculated by gavage, the wild type strain was recovered from livers and spleens, whereas, strain 1330 Δ ure1K Δ ure2C was not. It is noteworthy that when the infecting doses of *B. suis* were supplemented with urea, the recovery of strain 1330 from livers and spleens was increased, but the mutant strain 1330 Δ ure1K Δ ure2C was recovered only from livers. These findings suggest that the urease activity and sufficient substrate is needed for *B. suis* to cope with the low pH in the gastrointestinal tract i.e. either stomach or upper intestine. Similar observations have been recently reported by Sangari et al., [37] in *ure*-mutant strains of *B. abortus*. Thus, similar to the urease of *H. pylori* [10,11], that of *B. suis* appears to be a factor in coping with the pH of the gastrointestinal tract. Even though the *ure1*, *ure2* mutant *B. suis* exhibited no urease activity, urea supplementation raised the recovery of this strain from livers. This is possible because other bacterial species in stomach and gastro-

intestinal tract may have utilized the supplemented urea to reduce the acidity and facilitated enhanced survival of *Brucella*. It is worth noting that inoculation via an oral route versus direct inoculation in the stomach may be more representative of a natural infection. However, we chose to deliver a known dose of *Brucella* and measure uptake through the gastro-intestinal tract (i.e., into the spleen and liver).

For an intracellular bacterium like *Brucella* that replicates inside phagocytic cells associated with the various tissues including the reproductive tract [19], urease may not be important for regulating the pH in an intracellular milieu. Correspondingly, the lack of differences between wild type and *ure* mutants inoculated intraperitoneally during splenic clearance was not surprising (Table 3). Nevertheless, in the case of *H. pylori* and perhaps other organisms, urease is an important factor in survival in severely acidified environments, probably because neutralization of the extracellular milieu around the cells is needed to prevent irreversible membrane damage. Acidification and subsequent alkalization in the phagosomal compartment is a prerequisite for a successful *Brucella* infection *in-vitro* [20].

Table 4: Description of the plasmids and bacterial strains used in this study

Plasmid or strain	Description	Source or reference
Plasmids		
pCR2.1	TA cloning vector, 3.9-kb, Amp ^r	Invitrogen
pCRure1	pCR2.1 with 2.2-kb insert containing the <i>B. suis</i> ure1D, ure1A, ure1B, ure1C genes; Amp ^r	This study
PCRure2ABC	pCR2.1 with 2.2-kb insert containing the <i>B. suis</i> ure2A, ure2B, ure2C genes; Amp ^r	This study
pGEM-3Z	Cloning vector, 2.74-kb, Amp ^r	Promega
pGEMure1	pGEM-3Z with 2.2-kb insert containing the <i>B. suis</i> ure1D, ure1A, ure1B, and ure1C genes; Amp ^r	This study
pGEMure2ABC	pGEM-3Z with 2.2-kb insert containing the <i>B. suis</i> ure2A, ure2B, and ure2C genes; Amp ^r	This study
pGEMure2ABC-2	pGEM-3Z with 2.9-kb insert containing the <i>B. suis</i> ure2A, ure2B, ure2C genes; Amp ^r	This study
pUC4K	Cloning vector, 3.9-kb, Kan ^r , Amp ^r	Pharmacia
pGEMure1K	pGEMure1 with 0.9-kb NcoI fragment deleted and blunt ended and a 1.6-kb PvuII-cut and blunt-ended Kan ^r cassette from pUC4K ligated, Kan ^r , Amp ^r	This study
pGEMure2ABCK	pGEMure2 with 0.6-kb SacII fragment deleted and blunt ended and a 1.6-kb PvuII-cut and blunt-ended Kan ^r cassette from pUC4K ligated, Kan ^r , Amp ^r	This study
pGEMure2ABCC	pGEMure2 with 1.2-kb ClaI and MfeI fragment deleted and blunt ended and a 1.7-kb Eco52I plus KpnI-cut and blunt-ended Cm ^r cassette from pBBR4MCS ligated, Cm ^r , Amp ^r	This study
pBBR4MCS	Broad-host-range vector; Cm ^r	[27]
Strains		
<i>Escherichia coli</i> Top10	F: mcrA Δ(mrr-hsdRMS-mcrBC) Φ80lacZΔM15 ΔlacX74 deoRrecA1 araD139 Δ(ara-leu) 7697 galU galK rpsL (StrR) endA1 nupG	Invitrogen
<i>Brucella suis</i>		
1330	Parent-type, smooth strain	G.G. Schurig
1330Δure1K	ure1DA deleted mutant of 1330, Kan ^r	This study
1330Δure2K	ure2BC deleted mutant of 1330, Kan ^r	This study
1330Δure2C	ure2ABC deleted mutant of 1330, Cm ^r	This study
1330Δure1KΔure2C	ure1DA and ure2ABC deleted mutant of 1330, Cm ^r , Kan ^r	This study

However, the amount of urea present in macrophages maybe low enough as not to cause a significant pH change. As such, the impact of urease activity on macrophage pH can be considered insignificant, and therefore, similar survival rates in macrophages between wild-type and *ure* mutants was not unexpected.

Conclusion

The *B. suis* genome contains two operons encoding urease. The genes in the *ure1* operon are important for optimal growth in culture, and indispensable for urease activity, resistance to low-pH killing and survival of the pathogen when inoculated by gavage. The genes in the *ure2* operon seem to be dispensable for the above functions, but slightly enhance the resistance to low-pH killing measured *in-vitro*. The apparent lack of urease activity encoded by *ure2* is consistent with the observation by Hooper and Berg who reviewed over 20 microbial genomes with respect to gene innovation following gene duplication (38). They concluded that most gene copies are deleted but of the ones retained, they function in weak or ancillary roles. Thus it is possible that *ure2* in *B. suis* is diverged enough to encode a new function that has yet to be defined.

Methods

DNA and protein sequence analyses

The nucleotide sequence of the urease genes was analyzed with DNASTAR software (DNASTAR, Inc., Madison, Wis.). The destination of the deduced proteins upon translation and processing was predicted using the Subloc

v1.0 server of the Institute of Bioinformatics of the Tsinghua University <http://www.bioinfo.tsinghua.edu.cn/>. Identity of the *ureA*, *ureB*, and *ureC* genes of *B. suis* *ure1* and *ure2* operons with sequences of the EMBL/GenBank/DBJ databases was analyzed using the BLAST software [22] at the National Center for Biotechnology Information (Bethesda, MD).

Bacterial strains, plasmids, and reagents

B. suis strain 1330 was obtained from our culture collection. *Escherichia coli* strain Top10 (Invitrogen Life Technologies, Carlsbad, Calif.) was used for producing plasmid constructs. *E. coli* were grown in Luria-Bertani (LB) broth or on LB agar (Difco Laboratories, Sparks, MD). *Brucella* were grown either in Trypticase soy broth (TSB) or on Trypticase soy agar (TSA) plates (Difco) at 37 °C in the presence of 5% CO₂ as previously described [23]. The plasmids used in this study are listed in Table 4. Bacteria containing plasmids were grown in the presence of ampicillin or kanamycin at a 100-μg/ml concentration (Table 4).

All experiments with live *Brucella* were performed in a Biosafety Level 3 facility in the Infectious Disease Unit of the Virginia-Maryland Regional College of Veterinary Medicine per standard operating procedures approved by the Centers for Disease Control and Prevention.

Recombinant DNA methods

Genomic DNA was isolated from *B. suis* strain 1330 by use of a QIAGEN blood and tissue DNA kit (QIAGEN Inc.,

Table 5: Identity of *B. suis* urease-1 α and urease-2 α sequences with the urease α subunits or urease proteins in GenBank

Accession number With urease-1 α	Organism	Identity%
YP_221060.1	<i>Brucella abortus</i>	99%
NP_540569.1	<i>Brucella melitensis</i>	99%
NP_105696.1	<i>Mesorhizobium loti</i>	81%
AAL83830.1	<i>Rhizobium leguminosarum</i>	78%
NP_386576.1	<i>Sinorhizobium meliloti</i>	79%
NP_355353.1	<i>Agrobacterium tumefaciens</i>	78%
YP_166953.1	<i>Silicibacter pomeroyi</i>	75%
EAQ05022.1	<i>Oceanicola batsensis</i>	75%
BAB21067.1	<i>Rhodobacter capsulatus</i>	75%
ZP_01056362.1	<i>Roseobacter</i> sp.	73%
ZP_00962028.1	<i>Sulfitobacter</i> sp.	73%
YP_109255.1	<i>Burkholderia pseudomallei</i>	70%
AAA25151.1	<i>Klebsiella Aerogenes</i>	68%
ZP_00990659.1	<i>Vibrio splendidus</i>	69%
NP_286680.1	<i>Escherichia coli</i>	67%
NP_886007.1	<i>Bordetella parapertussis</i>	66%
ZP_00504504.1	<i>Clostridium thermocellum</i>	63%
NP_176922.1	<i>Arabidopsis thaliana</i>	64%
YP_248248.1	<i>Haemophilus influenzae</i>	62%
NP_391545.1	<i>Bacillus subtilis</i>	62%
ZP_00133792.2	<i>Actinobacillus Pleuropneumoniae</i>	62%
ABC74584.1	<i>Yersinia enterocolitica</i>	57%
AAK32714.1	<i>Helicobacter pylori</i>	59%
NP_336355.1	<i>Mycobacterium tuberculosis</i>	62%
AAZ99164.1	<i>Streptococcus vestibularis</i>	57%
AAO85883.1	<i>Glycine max</i>	63%
BAB78715.1	<i>Oryza sativa</i>	62%
XP_750204.1	<i>Aspergillus fumigatus</i>	62%
With urease-2 α		
NP_539564.1	<i>Brucella melitensis</i>	99%
YP_222047.1	<i>Brucella abortus</i>	99%
ZP_00828648.1	<i>Yersinia frederiksenii</i>	69%
ZP_00797116.1	<i>Yersinia pestis</i> (and all species of <i>Yersinia</i>)	69%
NP_929433.1	<i>Photobacterium luminescens</i>	67%
NP_929433.1	<i>Photobacterium luminescens</i>	67%
NP_241120.1	<i>Bacillus halodurans</i>	59%
YP_237504.1	<i>Pseudomonas syringae</i>	59%
NP_391545.1	<i>Bacillus subtilis</i>	57%
YP_368247.1	<i>Burkholderia</i> sp.	56%
ZP_00612021.1	<i>Mesorhizobium</i> sp.	57%
NP_533073.1	<i>Agrobacterium tumefaciens</i>	57%
YP_295218.1	<i>Ralstonia eutropha</i>	56%
EAQ70376.1	<i>Synechococcus</i> sp.	57%
105696.1	<i>Mesorhizobium loti</i>	56%
YP_248248.1	<i>Haemophilus influenzae</i>	56%
NP_979959.1	<i>Bacillus cereus</i>	56%
NP_440403.1	<i>Synechocystis</i> sp.	56%
AAG52306.1	<i>Arabidopsis thaliana</i>	57%
ZP_00133792.2	<i>Actinobacillus Pleuropneumoniae</i>	55%
ZP_00990659.1	<i>Vibrio splendidus</i>	56%
NP_286680.1	<i>Escherichia coli</i>	56%
YP_204056.1	<i>Vibrio fischeri</i>	55%
AAP51176.1	<i>Helicobacter pylori</i>	55%
BAB78715.1	<i>Oryza sativa</i>	56%
AAR21273.1	<i>Streptococcus thermophilus</i>	54%
NP_336355.1	<i>Mycobacterium tuberculosis</i>	55%
AAC46128.1	<i>Bordetella bronchiseptica</i>	52%
XP_658035.1	<i>Aspergillus nidulans</i>	54%

Table 6: Sequences of primers (5' to 3') used to amplify ure genes

Primer name	Sequence (5' to 3')
UreaseONE-Forward	CGACGCCGTAGGTAAATC
UreaseONE-Reverse	TGAAATGGACATGGGTATCG
UreaseTWO-Forward	GCTTGCCCTTGAATTCCTTTGTGG
UreaseTWO-Reverse	ATCTGCGAATTTGCCGGACTCTAT
Ure-2-AB-Forward	CGGGGATCCCATCACAAATCGGCAAACA
Ure-2-AB-reverse	CGGTCTAGAATGGCGCGAAGGAAGGTT 3'

Valencia, CA). Plasmid DNA was isolated using either plasmid Mini- or Midiprep purification kits (QIAGEN). Restriction digests, Klenow reactions, and ligations of DNA were performed as described elsewhere [24]. Restriction enzymes, Klenow fragment, and T4 DNA ligase enzyme were purchased from Promega Corporation (Madison, WI). Ligated plasmid DNA was transformed into *E. coli* Top10 cells by heat shock per the guidelines of the supplier (Invitrogen). Plasmid DNA was electroporated into *B. suis* with a BTX ECM-600 electroporator (BTX, San Diego, CA), as described previously [25].

Mutation of ure1 operon

A 2,241-bp region including the whole length of the *ure1D*, *ure1A*, and *ure1B* genes and a portion of *ure1C* gene (Figure 1) was amplified via PCR using the genomic DNA of *B. suis* strain 1330 and the primers UreaseONE-Forward and UreaseONE-Reverse (RansomHill Bioscience, Inc., Ramona, CA) (see Table 6). The amplified gene fragment was cloned into the pCR2.1 vector of the TA cloning system (Invitrogen) to produce plasmid pCRure1. From this plasmid the *ure1* region was isolated by *EcoRI* digestion and cloned into pGEM-3Z (Promega) and the resulting 5.0-kb plasmid was designated pGEMure1. The suicide vector pGEMure1K was constructed as follows: the plasmid pGEMure1 was digested with *NcoI* to delete a 575-bp region from the *ure1* region. The *NcoI* sites on the 4.4-kb plasmid were filled in by reaction with Klenow enzyme and ligated to the 1.6-kb *PvuII* fragment of pUC4K (also blunt ended) containing the Tn903 *npt* gene [26], which confers kanamycin resistance (Kan^r) to *B. suis*. The resulting suicide vector was designated pGEMure1K. The *E. coli* Top10 cells carrying the recombinant plasmid were picked from TSA plates containing kanamycin (100 µg/ml).

One µg of pGEMure1K was used to electroporate *B. suis* strain 1330; several colonies of strain 1330 were obtained from a TSA plate containing kanamycin (100 µg/ml). These colonies were streaked on TSA plates containing

ampicillin (100 µg/ml) to determine whether a single- or double-crossover event had occurred. Five of the colonies did not grow on ampicillin-containing plates, suggesting that a double-crossover event had occurred. PCR with the primers UreaseONE-Forward and UreaseONE-Reverse (see Table 6) confirmed that a double-crossover event had taken place in all five transformants. One of these strains was chosen for further analyses and designated 1330Δure1K.

Mutation of ure2B and ure2C

A 2,214-bp region including the whole length of the *ure2A* and *ure2B* genes, and a portion of the *ure2C* gene was amplified via PCR using the primers UreaseTWO-Forward and ureaseTWO-Reverse (see Table 6). The amplified gene fragment was cloned into the pCR2.1 vector to produce plasmid pCRure2ABC. From this plasmid, the *ure2ABC* region was isolated by *BamHI* and *XbaI* digestion and cloned into the same sites of plasmid pGEM-3Z (Promega). The resulting 5.0-kb plasmid was designated pGEMure2ABC. The suicide vector pGEMure2ABCK was constructed as follows: the plasmid pGEMure2ABC was digested with *SacII* to delete a 940-bp region from the *ure2ABC* region, sticky sites filled in with Klenow enzyme, and ligated to the 1.6-kb *PvuII* fragment of pUC4K. The resulting suicide vector was designated pGEMure2ABCK. One microgram of pGEMure2ABCK was used to electroporate *B. suis* strain 1330, and a transformed strain containing a double-crossover event was verified by PCR and designated 1330Δure2K.

Mutation of ure2A, ure2B and ure2C

A 2,923-bp region including the whole length of *ure2A* and *ure2B* genes, and a portion of *ure2C* gene (Figure 1) was amplified via PCR using the primers Ure-2-AB-Forward and Ure-2-AB-reverse (see Table 6). The amplified gene fragment was purified using a Qiagen PCR purification kit (Qiagen), digested with *BamHI* and *XbaI*, cloned into the same sites of plasmid pGEM-3Z (Promega) to produce the 5.7-kb plasmid pGEMure2ABC-2. The suicide

vector pGEMure2ABCC was constructed as follows: the plasmid pGEMure2ABC-2 was digested with *Cla*I and *Mfe*I to delete a 1215-bp region from the *ure2ABC* region, and the ends were filled in with Klenow enzyme. The 1.7-kb gene encoding resistance to chloramphenicol (Cm^r) was isolated by digesting the plasmid pBBR1MCS [27] with *Eco*52I plus *Kpn*I, and the ends were filled in with Klenow enzyme. The larger fragment of the plasmid pGEMure2ABC-2 was ligated with the Cm^r gene, to make the suicide vector pGEMure2ABCC. One μ g of pGEMure2ABCC was used to electroporate *B. suis* strain 1330 and the transformants were picked from TSA plates containing chloramphenicol (30 μ g/ml). A transformed *B. suis* strain with a double-crossover event was verified by PCR and designated 1330 Δ ure2C.

Generation of an ure1, ure2 strain

One μ g of suicide vector pGEMure2ABCC was used to electroporate mutant *B. suis* strain 1330 Δ ure1K. The transformants were picked from TSA plates containing kanamycin (100 μ g/ml) plus chloramphenicol (30 μ g/ml). A transformant *B. suis* strain with a double-crossover event was verified by PCR and designated 1330 Δ ure1K Δ ure2C.

Real-time PCR assays

RNA was isolated from broth cultures of *B. suis* strain 1330 by the procedure described previously [31]. After a 75% ethanol wash, the dried RNA pellet was resuspended in RNase- and DNase-free water (Sigma). The concentration of the RNA was determined with the RiboGreen RNA Quantitation kit (Molecular Probes). Genomic DNA was digested with RNase-free DNase (Ambion), and precipitated with GlycoBlue (Ambion). RNA samples not treated with reverse transcriptase was also subjected to PCR to measure the level of contamination from genomic DNA. For each RNA sample, the control transcript (*sigA*) and the target mRNA were reverse-transcribed using the ReverTra Dash kit (Toyobo). The cDNA was amplified using the Light Cycler (Roche) in conjunction with the DNA Master SYBR Green I kit (Roche). Primers specific for the internal standard of *ure* genes were purchased from Sigma-Genosys. The target cDNA was normalized internally to the *sigA* cDNA level in the same sample [32,33].

Growth rates of B. suis

Single colonies of strains 1330, 1330 Δ ure1K, 1330 Δ ure2K, 1330 Δ ure2C and 1330 Δ ure1K Δ ure2C were grown at 37°C for 72 h to stationary phase in 5 ml of TSB. These cultures were used to inoculate 25 ml of TSB in a Klett side-arm flask to 12 to 16 Klett units. Cultures were grown at 37°C at 200 rpm; Klett readings were recorded every 2 h in a Klett-Summerson colorimeter (New York, NY).

Native polyacrylamide gel electrophoresis

Extracts were prepared from *B. suis* strains 1330, 1330 Δ ure1K, 1330 Δ ure2K, 1330 Δ ure2C and 1330 Δ ure1K Δ ure2C using glass beads and vortex, in Tris-HCl 30 mM, pH 8.0). Buffer without SDS or mercaptoethanol were added to the extracts and the extracts were loaded into the gel that did not contain SDS. After running was complete, the gel was placed in 0.02% cresol red-0.1 EDTA, washed several times until it became yellow, and incubated with 1.5% urea at room temperature until pink bands appeared, i.e., the positive urease reaction.

Urease enzyme activity of strains-qualitative

Fifty μ l of culture (grown for 72 h in TSB) volumes of strains 1330, 1330 Δ ure1K, 1330 Δ ure2K, 1330 Δ ure2C and 1330 Δ ure1K Δ ure2C were used to inoculate 5 ml volumes of urease test broth (Difco). The contents were incubated at 37°C with 200 rpm shaking. At 8, 24 and 48 hours after incubation, the cultures were centrifuged to remove the cells. The color change in the clarified urease test broth was measured using a Klett-Summerson colorimeter. The native color of the urease test broth was used as a blank.

Urease enzyme activity of strains-quantitative

The Coomassie Brilliant Blue G, TRIS, NADPH, 2-oxoglutarate and glutamate dehydrogenase (from bovine liver) were from Sigma-Aldrich. Urea was obtained from Qia-gen. All other reagents were of analytical grade.

The concentration of protein in the extracts was determined using a Bradford-modified assay [34]. All assays (final volume of 2 mL) were performed in 31 mM Tris-HCl pH 8.0 buffer at 28°C, using a Beckman DU 800 UV/Vis spectrophotometer, with a stirred, temperature-controlled multi-cell holder. Urease activity was determined using a coupled assay with glutamate dehydrogenase [35] Glutamate dehydrogenase 12 U/mL was incubated with 250 μ M NADPH for 5 min. 2-Oxoglutarate (1 mM) and *B. suis* extracts were added and the reaction was followed at 340 nm. The observed decrease in absorbance monitored during this period is due to nonspecific oxidation of NADPH by several enzymes in the extract. When the absorbance was stable, urea (10 mM) was added and the decrease in absorbance at 340 due to urease activity was measured for 5 min. Initial rates were calculated from the linear portion of the curves, by linear regression using the least squares method. The absorption coefficient used for NADPH was 6.22 $M^{-1}cm^{-1}$ [36]. The volume of extracts was varied and the specific activity of urease was calculated. One unit of urease activity was defined as the amount of enzyme that hydrolyzes 1 μ mol of urea per min. Specific activities were calculated as units of urease per mg of protein in the extract.

Preparation of *B. suis* infection inocula

TSA plates were inoculated with single colonies of *B. suis* strains. After 4 days of incubation at 37°C with 5% CO₂, the cells were harvested from plates, washed with phosphate-buffered saline (PBS), resuspended in 20% glycerol, and frozen at -80°C. The number of viable cells or cfu was determined by counting after spreading of dilutions of the cell suspensions on TSA that were incubated at 37°C with 5% CO₂. The cultures from these were used to inoculate mice and macrophages as described below.

Persistence of recombinant *B. suis* strains in macrophages

The mouse macrophage-like cell lines J774 and H36.12a [Pixie 12a] were obtained from the American Type Culture Collection (Manassas, VA). The macrophage cells were seeded at a density of 5×10^5 /ml in Dulbecco's modified essential medium (DMEM) (Sigma-Aldrich) into 24-well tissue culture dishes and cultured at 37°C with 5% CO₂ until confluent. The tissue culture medium was removed, 200 µl (10⁸ cells) of the bacterial suspension in PBS was added, and the cells were incubated at 37°C for 4 h. The suspension above the cell monolayer was removed, and the macrophages washed three times with PBS. One milliliter of DMEM containing 25 µg of gentamicin was added, and the cells were incubated for 48 h at 37°C. At various time points (0, 1, 4, 24, and 48 h of incubation), the growth medium was removed, the cells were washed with PBS, and 500 µl of 0.25% sodium deoxycholate was added to lyse the infected macrophages. After 5 min the lysate was diluted in PBS, and the number of *B. suis* cfu was determined after growth at 37°C with 5% CO₂ for 72 h on TSA. Triplicate samples were taken at all time points, and the assay was repeated two times.

Survival of *B. suis* strains inoculated intraperitoneally

The Animal Care Committee of the Virginia Polytechnic Institute and State University approved the procedures used in handling research animals. Six-week-old female BALB/c mice (Charles River Laboratories, Wilmington, MA) were allowed 1 week of acclimatization. Groups of seven or eight mice each were intraperitoneally injected with 4.1 to 5.2 log₁₀ cfu of *B. suis* strains 1330, 1330Δure1K, 1330Δure2K, 1330Δure2C and 1330Δure1KΔure2C. Six weeks after inoculation, mice were killed using CO₂ asphyxiation, and the *Brucella* cfu per spleen determined as described previously [23]. Briefly, spleens were collected and homogenized in TSB. Serial dilutions of each splenic homogenate were plated on TSA and the number of cfu was determined after 4 days of incubation at 37°C with 5% CO₂.

Survival of *B. suis* strains in spleens and liver when inoculated by gavage

Groups of seven to eight BALB/c mice each were dosed by gavage with 8.6 log₁₀ cfu of *B. suis* strain 1330 or strain

1330Δure1KΔure2C, with or without supplementation of 10 mM urea in approximately 0.5 ml PBS. Mice were sacrificed 1 week after inoculation, and the *Brucella* cfu per spleen or per liver was determined as described previously [23].

In-vitro pH sensitivity of strains

The pH of the phosphate buffered saline (PBS) was adjusted to 2, 4 or 7 by adding 1N HCl. The urea concentration of the PBS was adjusted to 5, 10, or 20 mM by adding urea. The PBS with different pH and urea contents were inoculated with 8.0 log₁₀ cfu of strains 1330, 1330Δure1K, 1330Δure2K or 1330Δure2C, and incubated at 37°C. At the end of 90 min incubation, serial dilutions of each culture were plated on TSA. The number of cfu on plates was determined after 4 days of incubation at 37°C with 5% CO₂.

Data analyses

The mean and the standard deviation values from the mouse tissue clearance studies were calculated using the Microsoft Excel 2001 program (Microsoft Corporation). The Student *t* test was performed in the analysis of cfu data in the macrophage study. The cfu data from the splenic and liver clearance studies, and *in vitro* pH sensitivity study were analyzed by performing analysis of variance. The mean cfu counts among treatments were compared using the least-significance pair-wise comparison procedure [29].

Authors' contributions

AB and VD constructed mutant strains, and carried out part of growth and splenic clearance assays. AC carried out part of splenic and hepatic clearance assays and acid tolerance assays. SP and PR carried out macrophage assays. GS, NS and SB conceived of the study and participated in its design and coordination. AC-R carried out native gel electrophoresis, and AM performed quantitative urease activity.

Additional material**Additional File 1**

Identity of *B. suis* urease-1α and urease-2α sequences with the urease α subunits or urease proteins in GenBank.

Click here for file

[<http://www.biomedcentral.com/content/supplementary/1471-2180-7-57-S1.doc>]

Additional File 2

Sequences of primers (5' to 3') used to amplify ure genes.

Click here for file

[<http://www.biomedcentral.com/content/supplementary/1471-2180-7-57-S2.doc>]

Acknowledgements

We thank Betty Mitchell for help in determining mouse splenic cfu, Nancy Tenpenny and Kay Carlson for technical assistance, and Chris Wakley and the staff of the Virginia-Maryland Regional College of Veterinary Medicine non-client animal facility for the expert handling of the mice.

References

- Collins CM, D'Orazio SEF: **Bacterial ureases: structure, regulation of expression and role in pathogenesis [Review].** *Mol Microbiol* 1993, **9**:907-913.
- Burne RA, Chen YM: **Bacterial ureases in infectious diseases.** *Microbes and Infection* 2000, **2(5)**:533-542.
- McLean RJC, Nickel JC, Cheng KJ, Costerton JW: **The ecology and pathogenicity of urease-producing bacteria in the urinary tract [Review].** *Crit Rev Microbiol* 1988, **16**:37-79.
- Mobley HLT, Hausinger RP: **Microbial ureases: significance, regulation, and molecular characterization [Review].** *Microbiol Rev* 1989, **53**:85-108.
- Mobley HLT, Island MD, Hausinger RP: **Molecular biology of microbial ureases [Review].** *Microbiol Rev* 1995, **59**:451-480.
- Morou-Bermudez E, Burne RA: **Genetic and physiologic characterization of urease of *Actinomyces naeslundii*.** *Infect Immun* 1999, **67**:504-512.
- Corbel MJ, Brinley Morgan WJ: **Genus *Brucella* Meyer and Shaw 173AL.** In *Bergey's Manual of Systematic Bacteriology Volume 1*. Edited by: Krieg NR, Holt JG. Williams and Wilkins, Baltimore, Md; 1920:377-390.
- Ko J, Splitter GA: **Molecular Host-Pathogen Interaction in Brucellosis: Current Understanding and Future Approaches to Vaccine Development for Mice and Humans.** *Clin Microbiol Rev* 2003, **16(1)**:65-78.
- Paulson IT, Sheshadri R, Nelson KE, et al.: **The *Brucella suis* genome reveals fundamental similarities between animal and plant pathogens and symbionts.** *Proc Natl Acad Sci USA* 2002, **99**:13148-13153.
- Chen G, Fournier RL, Varanasi S, Mahama-Relue PA: ***Helicobacter pylori* survival in gastric mucosa by generation of a pH gradient.** *Biophys J* 1997, **73**:1081-1088.
- Scott DR, Weeks D, Hong C, Postius S, Melchers K, Sachs G: **The role of internal urease in acid resistance of *Helicobacter pylori*.** *Gastroenterology* 1998, **114**:58-70.
- Riddles PV, Whan V, Blakeley RL, Zerner B: **Cloning and sequencing of a jack bean urease encoding cDNA.** *Gene* 1991, **108**:265-267.
- Jabri E, Carr MB, Hausinger RP, Karplus PA: **The crystal structure of urease from *Klebsiella aerogenes*.** *Science* 1995, **268**:998-1004.
- Lee MH, Pankratz HS, Wang S, Scott RA, Finnegan MG, Johnson MK, Ippolito JA, Christianson DV, Hausinger RP: **Purification and characterization of *Klebsiella aerogenes* UreE protein: a nickel-binding protein that functions in urease metallocenter assembly.** *Prot Sci* 1993, **2**:1042-1052.
- Park IS, Carr MB, Hausinger RP: **In vitro activation of urease apo-protein and role of UreD as a chaperone required for nickel metallocenter assembly.** *Proc Natl Acad Sci USA* 1994, **91**:3233-3237.
- Smith DG, Russell WC, Ingledew WJ, Thirkell D: **Hydrolysis of urea by *Ureaplasma urealyticum* generates a transmembrane potential with resultant ATP synthesis.** *J Bacteriol* 1993, **175**:3253-3258.
- Jahns T: **Ammonium/urea-dependent generation of a proton electrochemical potential and synthesis of ATP in *Bacillus pasteurii*.** *J Bacteriol* 1996, **178**:403-409.
- Monack DM, Falkow S: **Cloning of *Bordetella bronchiseptica* urease genes and analysis of colonization by a urease-negative mutant strain in a guinea-pig model.** *Mol Microbiol* 1993, **10**:545-553.
- Corbel MJ: **Brucellosis: an overview.** *Emerg Infect Dis* 1997, **3**:213-221.
- Porte F, Liautard JP, Kohler S: **Early acidification of phagosomes containing *Brucella suis* is essential for intracellular survival in murine macrophages.** *Infect Immun* 1999, **67(8)**:4041-4047.
- Bonnet M, Rafi MM, Chikindas ML, Montville TJ: **Bioenergetic mechanism for nisin resistance, induced by the acid tolerance response of *Listeria monocytogenes*.** *Appl Environ Microbiol* 2006, **72(4)**:2556-2563.
- Altschul S, Gish W, Miller W, Myers E, Lipman D: **Basic local alignment search tool.** *J Mol Biol* 1990, **215**:403-410.
- Schurig GG, Roop RM, Bagchi T, Boyle SM, Buhman D, Sriranganathan N: **Biological properties of RB51: a stable rough strain of *Brucella abortus*.** *Vet Microbiol* 1991, **28**:171-188.
- Sambrook J, Fritsch EF, Maniatis T: **Molecular cloning: a laboratory manual.** 2nd edition. Cold Spring Harbor: Laboratory Press, Cold Spring Harbor, N.Y.; 1989.
- McQuiston JR, Schurig GG, Sriranganathan N, Boyle SM: **Transformation of *Brucella* species with suicide and broad host-range plasmids.** *Methods Mol Biol* 1995, **47**:143-148.
- Ried JL, Colmer A: **An npt-sacB-sacR cartridge for constructing directed, unmarked mutations in gram-negative bacteria by marker exchange-eviction mutagenesis.** *Gene* 1987, **57**:239-246.
- Kovach ME, Phillips RW, Elzer PH, Roop RM Jr, Peterson KM: **pBBR1MCS: a broad-host range cloning vector.** *BioTechniques* 1994, **16**:800-802.
- Plommet M: **Minimal requirements for growth of *Brucella suis* and other *Brucella* species.** *Zbl Bakt* 1991, **275**:436-450.
- Lentner M, Bishop T: **Experimental Design and Analysis.** Second edition. Valley Book Company, Blacksburg, VA; 1993.
- Jubier-Maurin V, Rodrigue A, Ouahrani-Bettache S, Layssac M, Mandrand-Berthelot M, Köhler S, Liautard J: **Identification of the *nik* gene cluster of *Brucella suis*: regulation and contribution to urease activity.** *J Bacteriol* 2001, **183(2)**:426-434.
- Mangan JA, Sole KM, Mitchison DA, Butcher PD: **An effective method of RNA extraction from bacteria refractory to disruption, including mycobacteria.** *Nucleic Acids Res* 1997, **25**:675-676.
- Manganelli RE, Dubnau S, Tyagi FR, Smith I: **Differential expression of 10 sigma factor genes in *Mycobacterium tuberculosis*.** *Mol Microbiol* 1999, **31**:715-724.
- Timm J, Post FA, Bekker LG, Walther GB, Wainwright HC, Manganelli R, Chan WT, Tsenova L, Gold B, Smith I, Kaplan G, McKinney JD: **Differential expression of iron-, carbon-, and oxygen-responsive mycobacterial genes in the lungs of chronically infected mice and tuberculosis patients.** *Proc Natl Acad Sci USA* 2003, **100**:14321-14326.
- Cordeiro C, Ponces Freire A: **Protein determination in permeabilized yeast cells using the Coomassie brilliant blue dye binding assay.** *Anal Biochem* 1994, **223(2)**:321-323.
- Dunn BE, Campbell GP, Perez-Perez GI, Blaser MJ: **Purification and characterization of urease from *Helicobacter pylori*.** *J Biol Chem* 1990, **265(16)**:9464-9469.
- Klingenberg M: *Methods in Enzymatic Analysis* Edited by: Bergmeyer HU. Academic Press, New York; 1974.
- Sangari FJ, Seoane A, Rodriguez MC, Agüero J, Garcia Lobo JM: **Characterization of the urease operon of *Brucella abortus* and assessment of its role in virulence of the bacterium.** *Infect Immun* 2007, **75(2)**:774-80.
- Hooper SD, Berg OG: **On the nature of gene innovation: duplication patterns in microbial genomes.** *Mol Biol Evol* 2003, **20(6)**:945-54.

Publish with **BioMed Central** and every scientist can read your work free of charge

"BioMed Central will be the most significant development for disseminating the results of biomedical research in our lifetime."

Sir Paul Nurse, Cancer Research UK

Your research papers will be:

- available free of charge to the entire biomedical community
- peer reviewed and published immediately upon acceptance
- cited in PubMed and archived on PubMed Central
- yours — you keep the copyright

Submit your manuscript here:
http://www.biomedcentral.com/info/publishing_adv.asp

