

RESEARCH

Open Access

# *Salmonella* Typhimurium-specific bacteriophage $\Phi$ SH19 and the origins of species specificity in the Vi01-like phage family

Steven PT Hooton<sup>1</sup>, Andrew R Timms<sup>1</sup>, Joanna Rowsell<sup>2</sup>, Ray Wilson<sup>2</sup> and Ian F Connerton<sup>1\*</sup>

## Abstract

**Background:** Whole genome sequencing of bacteriophages suitable for biocontrol of pathogens in food products is a pre-requisite to any phage-based intervention procedure. Trials involving the biosanitization of *Salmonella* Typhimurium in the pig production environment identified one such candidate,  $\Phi$ SH19.

**Results:** This phage was sequenced and analysis of its 157,785 bp circular dsDNA genome revealed a number of interesting features.  $\Phi$ SH19 constitutes another member of the recently-proposed *Myoviridae* Vi01-like family of phages, containing *S. Typhi*-specific Vi01 and *Shigella*-specific SboM-AG3. At the nucleotide level  $\Phi$ SH19 is highly similar to phage Vi01 (80-98% pairwise identity over the length of the genome), with the major differences lying in the region associated with host-range determination. Analyses of the proteins encoded within this region by  $\Phi$ SH19 revealed a cluster of three putative tail spikes. Of the three tail spikes, two have protein domains associated with the pectate lyase family of proteins (Tsp2) and P22 tail spike family (Tsp3) with the prospect that these enable *Salmonella* O antigen degradation. Tail spike proteins of Vi01 and SboM-AG3 are predicted to contain conserved right-handed parallel  $\beta$ -helical structures but the internal protein domains are varied allowing different host specificities.

**Conclusions:** The addition or exchange of tail spike protein modules is a major contributor to host range determination in the Vi01-like phage family.

**Keywords:** Phage biocontrol, biosanitization, bacteriophage genomics, *Salmonella* Typhimurium, *Myoviridae*, P22-like tail spike, pectate lyase tail spike domain, lipopolysaccharide

## Background

The use of virulent bacteriophages (phages) as biological control (biocontrol) agents against bacterial pathogens is an expanding field of research aimed at producing sustainable solutions for the control of these pathogens, and to circumvent problems such as those associated with the development of multidrug-resistant bacteria [1]. The antimicrobial activities of phages committed to the cellular lysis of a range of bacterial pathogens have been reported, which include food pathogens such as *Campylobacter jejuni* [2-5], *Escherichia coli* [6-8], and various *Salmonella enterica* serovars [4,9,10]. However, despite

the wealth of data regarding the efficacy of phages during intervention studies, relatively few phage-derived products have been developed sufficiently for commercial application. Only in the last few years has there been an extension of lab-based trials into the food production environment, where perhaps the best example is the recognition of the efficacy and the granting of 'generally recognized as safe' (GRAS) status to bacteriophages targeting *Listeria monocytogenes* by the United States Food and Drug Administration [11]. There are two products of note now available commercially-ListShield™ (Intralytix Inc., USA) a phage cocktail comprising virulent phages with broad activity against *L. Monocytogenes*, and Listex P100™ (EBI Food Safety, Netherlands). Following GRAS classification both ListShield™ and Listex P100™ are now viewed as safe to

\* Correspondence: [ian.connerton@nottingham.ac.uk](mailto:ian.connerton@nottingham.ac.uk)

<sup>1</sup>Division of Food Sciences, School of Biosciences, University of Nottingham, Sutton Bonington Campus, Loughborough LE12 5RD UK  
Full list of author information is available at the end of the article

be applied as food biopreservatives on ready-to-eat foods in the USA. Phage P100 (the active component of Listex P100) was initially characterized at the genetic level and in oral toxicity studies by Carlton et al [12]. These studies showed that P100 had no undesirable genes within its genome, and caused no ill effects when administered to rats. Many studies reporting the efficacy of Listex P100 against *L. monocytogenes* in various food production settings are now available in the literature [13-15].

If more phage-based applications are to reach standards where they are deemed fit for human/animal consumption then certain matters pertaining to safety must be taken into consideration. For instance, phages that show potential during preliminary studies must adhere to strict criteria if they are to be developed further as antimicrobial agents [16]. Most importantly, the selected phages must not possess genes associated with virulence, or those that may enhance the pathogenic profile of its target [17]. Many examples of phages that are recognized as being involved in such processes are known, for example, the Shiga toxin-encoding (Stx) phages—a key virulence factor of Shiga-toxigenic *E. coli* (STEC)—are the causative agents of haemolytic uraemic syndrome (HUS), a major contributor to disease associated with STEC infection [18,19]. Also, temperate phages that have the potential to form lysogens with their host need to be eliminated from trials at the earliest opportunity. Integration into, and excision out of the host genome, can lead to the transfer of genes between the phage and bacterium potentially altering the genetic profile of both [20]. These undesirable traits are most often associated with phages belonging to the *Podoviridae* (icosahedral head with a short non-contractile tail e.g. *Salmonella* phage P22) or *Siphoviridae* (icosahedral head with a flexible non-contractile tail e.g. phage  $\lambda$ ) families. However, members of the *Myoviridae* (icosahedral head and contractile tail e.g. phage T4) are more often associated with an obligately lytic lifecycle. All of these morphological characteristics can be easily discerned when phages are viewed under a transmission electron microscope, although assumptions as to the genetic nature of a phage cannot be made on morphological characteristics alone. Whole genome sequencing of phage isolates intended for use as biocontrol agents is now considered to be the 'gold standard' in terms of transferring phage-based applications from the laboratory to everyday use.

Here we report the complete genome sequence of  $\Phi$ SH19, a lytic bacteriophage adapted to infecting a number of different *S. Typhimurium* serovars.  $\Phi$ SH19 has shown great potential as a biocontrol agent against *S. Typhimurium* U288, the most prevalent serovar found in UK pig production premises [21]. *S. Typhi* phage Vi01 was the first of a recently-proposed new lineage of *Myoviridae* to be described. Genetic analyses of the  $\Phi$ SH19 genome reveal that it is a close relative of

phage Vi01, in terms of both DNA and protein sequences. However, phage Vi01 appears to be restricted to infecting *S. Typhi*, possibly due to the presence of a virulence (Vi) capsule antigen-degrading acetyl esterase domain incorporated into one of its three tail spikes [22]. The other completely sequenced member of the Vi01-like phage lineage is SboM-AG3 that is restricted to the infection of *Shigella* spp. [23]. No genes associated with either toxicity or lysogeny have been found within the  $\Phi$ SH19 157,785 bp circular dsDNA genome, nor in any of the Vi01 family of phages. A lack of virulence associated genes in  $\Phi$ SH19 will allow its use as a biocontrol agent, aimed at reducing *S. Typhimurium* entering the food chain, and in particular *S. Typhimurium* U288 from pork production.

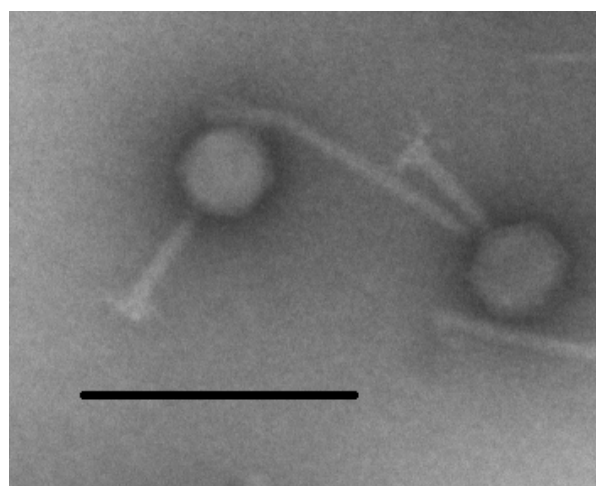
## Results

### Bacteriophage $\Phi$ SH19 characterization

Bacteriophage  $\Phi$ SH19 was originally isolated from pig intestinal contents and has specific activity against *S. Typhimurium* serovars [24]. Morphologically the phage has an icosahedral head with a contractile tail indicating it to be a member of the *Myoviridae* (Figure 1). A comparison of the lytic profiles of phages  $\Phi$ SH19 and Vi01 against a panel of *S. enterica* Serovars is given in Table 1. The data shows that as expected all the *S. Typhimurium* strains tested are refractory to infection by Vi01, whereas *S. Typhi* BRD948 likewise displays immunity towards infection by  $\Phi$ SH19 but susceptibility to Vi01.

### Genome analysis

The  $\Phi$ SH19 genome was sequenced from sonicated DNA fragments using the Roche 454 GS FLX platform



**Figure 1** TEM image of  $\Phi$ SH19. The presence of an icosahedral head and contractile tail indicate that  $\Phi$ SH19 is a member of the *Myoviridae*. Magnification  $\times$  43,000. Bar 250 nm.

(17,796 reads), from which a single contig of 157,785 bp was generated. BlastN analysis of the  $\Phi$ SH19 genome revealed two related genome sequences in the database-phages Vi01 (Genbank Acc. No. FQ312032) and SboM-AG3 (Genbank Acc. No. FJ373894). The  $\Phi$ SH19 genome was ordered such that it could be directly aligned with the existing genomes of Vi01 and SboM-AG3 commencing with the *rIIA* gene. The GC-content of the  $\Phi$ SH19 genome was determined to be 44.68%, which is slightly lower than Vi01 (45.22% GC), and considerably lower than SboM-AG3 (50.39% GC). Alignment of the nucleotide sequences of  $\Phi$ SH19 and Vi01 indicate that they are highly similar over a large proportion of the genome (between 80-98% pairwise identity). However, for a region located between 120-130 Kb on the genome map this homology breaks down to approximately 70% identity (and in some instances the conservation is lost completely). This region contains a cluster of three putative tail spike reading frames in all of the Vi01-like phages sequenced to date. At the nucleotide level  $\Phi$ SH19 is somewhat less similar when compared to SboM-AG3, with homologies ranging from 74-100% identity over approximately 60% of the genome. Comparison of the varying degrees of homology between  $\Phi$ SH19, Vi01, and SboM-AG3 are represented in Figure 2. Otherwise highly similar nucleotide matches were restricted to components of *Escherichia* phage PhaxI (Genbank Acc. No. HQ259289), *Serratia* phage KSP90 (Genbank Acc. No. AB452990) and *Salmonella* phage Det7 (Genbank Acc. No. AM765843).

Initial analysis of the  $\Phi$ SH19 genome identified 339 potential open reading frames (ORFs). Following BlastP and Pfam domain analyses of each potential ORF, the candidate ORFs were reduced to 166. Each ORF was then annotated using Vi01 and SboM-AG3 phages as reference sequences, and categorised as follows: Hypothetical phage proteins (81), Conserved hypothetical phage proteins (23), DNA replication (24), Tail morphogenesis (16), Capsid/DNA packaging (7), DNA maintenance/circularization (6), Putative uncharacterized proteins (3), Regulators (2), Lysis (2), and Putative homing endonucleases (2). A comparison of the major

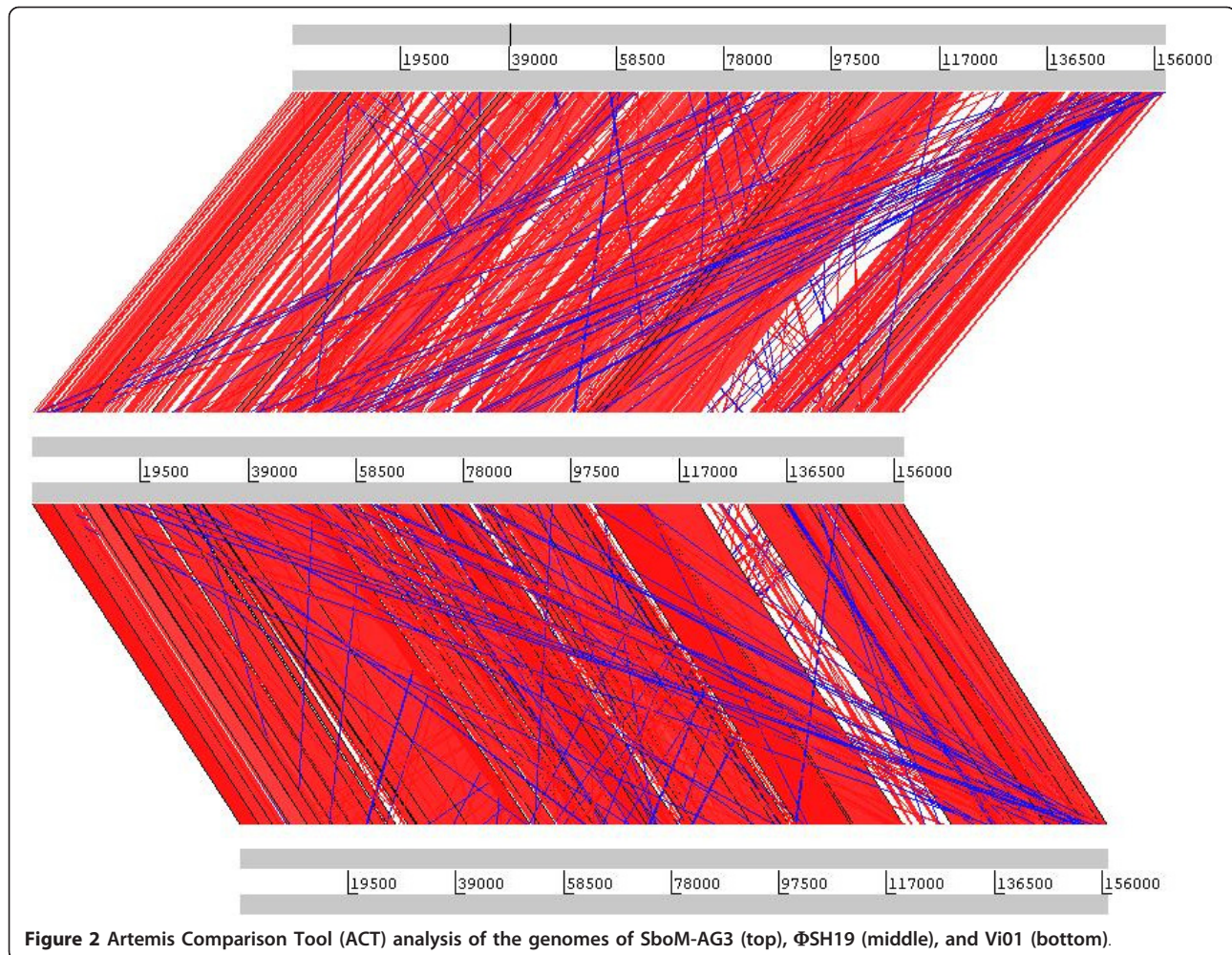
proteins of  $\Phi$ SH19 with their homologues in Vi01 and SboM-AG3 is presented in Table 2. Figure 3 shows the fully annotated  $\Phi$ SH19 genome as a circular genetic map. Using tRNAscan-SE, five tRNA genes were also identified in a 5 Kb non-coding region of the  $\Phi$ SH19 genome at the following nucleotide positions: Methionine tRNA (CAT) 137,703-137,735; Asparagine tRNA (GTT) 137,806-137,878; Tyrosine tRNA (GTA) 138,497-138,577; Serine tRNA (GCT) 138,657-138,742; and an undetermined tRNA 138,749-138,834. For phages  $\Phi$ SH19, Vi01, and SboM-AG3 there exists a set of tRNA genes located at similar positions in their respective genomes, some of which display a high degree of conservation. For example, BlastN analysis of the coding sequence for tRNA-Serine that is present in all three phages indicates 100% identity at the nucleotide level. Two other tRNAs (tRNA-Asparagine and tRNA-Tyrosine) are also shared between the group. For  $\Phi$ SH19 tRNA-Asparagine, the gene is 100% identical with its homologue in Vi01 and 95% identical to that of SboM-AG3, whilst the  $\Phi$ SH19 tRNA-Tyrosine shows more conservation with that of SboM-AG3 (99% identical) than Vi01 (84% identical).  $\Phi$ SH19 also shares a tRNA-Methionine gene (88% identity) and a tRNA of undetermined specificity (99% identity) with Vi01 that are absent in SboM-AG3. Phire analysis for phage regulatory elements identified a number of sites in the  $\Phi$ SH19 genome (Table 3). All of the putative regulatory elements are found on the non-coding strand (relative to the transcribed sequences within that region) however they appear to be associated with ORFs on the opposite strand. It is quite possible that these elements play a role in regulating  $\Phi$ SH19 gene expression, in an as yet undetermined manner, but perhaps by the production of small RNA molecules.

#### $\Phi$ SH19 tail spikes

Three tail spike genes-*tsp1* (bases 120,710-122,641c), *tsp2* (122,702-124,876c), and *tsp3* (124,992-127,088c) were identified during the annotation of  $\Phi$ SH19. BlastN analysis of the *tsp1* gene (1932 bp) shows that the nucleotide sequence has 94% identity with that of Vi01 orf 170c (Vi01 Tsp1) over the first 263 bases, but beyond this conservation breaks down and no further nucleotide identities are observed between the two genes. A similar sequence to *tsp1* is present at orf 00207 (SboM-AG3 Tsp1) of SboM-AG3 (64% identity over the first 390 bases), and a shorter stretch of homology (78% identity over the first 54 bases) is located within orf 00212 (SboM-AG3 Tsp3). As with Vi01, no further identity can be observed with *tsp1* following these short stretches of conservation. Other nucleotide alignments of *tsp1* include identities with the *Salmonella* phage Det7 tail spike gene (86% identity from bases 360-460),

**Table 1 Host range assays of  $\Phi$ SH19 and Vi01 (+ = lysis and- = no lysis).**

<i>Salmonella</i>	$\Phi$ SH19	Vi01
<i>S. Typhimurium</i> U288	+	-
<i>S. Typhimurium</i> DT104 WT	+	-
<i>S. Typhimurium</i> DT104 NCTC 13348	-	-
<i>S. Typhimurium</i> WT (Rawlings)	+	-
<i>S. Typhimurium</i> WT (Turner)	+	-
<i>S. Typhimurium</i> LT2	+	-
<i>S. Typhi</i> BRD948	-	+



**Figure 2** Artemis Comparison Tool (ACT) analysis of the genomes of SboM-AG3 (top), ΦSH19 (middle), and Vi01 (bottom).

and an endo- $\alpha$ -sialidase gene of coliphage K1F (76% identical from bases 351-485). Aside from these alignments, which all span a region covering the first 485 bases of *tsp1*, no homologies were found in the database for the region covering bases 485-1932. Alignment of the *tsp2* gene (2175 bp) reveals that only Vi01 and SboM-AG3 have similar sequences within the database. As with *tsp1*, the homologies all span the start of the gene: 85% identity (bases 1-723) with Vi01 orf 171c (Vi01 Tsp2-maturation/adhesion protein) and 70% identity (bases 1-360) with SboM-AG3 orf 00210 (SboM-AG3 Tsp2). The latter portion of the *tsp2* gene does not align with any sequences in the database. BlastN searches involving the *tsp3* gene (2097 bp) show that the sequence is highly similar to the Det7 tail spike gene (85% identity from bases 1-782). To a lesser extent, *tsp3* shares sequence homology (84% identity between bases 1-461) with Vi01 orf 172c (Vi01 Tsp3) and orf 170c (69% identity between bases 1-179). Apart from these short regions of homology, there are no further identities between *tsp3* and Vi01. Interestingly, no nucleotide

sequence homology was found between *tsp3* and SboM-AG3. Bases 481-667 show a conserved sequence that is shared between several phage genomes in the database. Sequence alignments over this region indicate 74-77% shared identities between various *Salmonella* phages including P22, ST104, ST64T, ST160, SE1, and some of the *S. Enteritidis* typing phages (SETP) [25]. Interestingly, the sequence is also present in prophage tail spikes of *S. Typhimurium* D23580, *S. Typhimurium* T000240, *S. Heidelberg* SL476, and *S. Paratyphi* A (strain AKU 12601). As was the case for *tsp1* and *tsp2* no homologous sequences are found to match the latter region of the *tsp3* gene.

Translation of the *tsp* gene sequences indicate that Tsp1 is a 643 amino acid protein (predicted MW ~ 68.9 kDa), Tsp2 is comprised of 724 amino acids (predicted MW ~ 78.2 kDa), and Tsp3 698 amino acids (predicted MW ~ 75.8 kDa). Pfam domain searches for each tail spike indicated significant domain matches for Tsp2 (Pectate lyase domain-family 3 CL0268) and Tsp3 (P22 tail spike family); however no significant domain

**Table 2 Comparison of  $\Phi$ SH19 proteins with those of Vi01 and SboM-AG3**

CDS	$\Phi$ SH19 coordinates & amino acid length	Predicted MW	Pfam domain	Amino acid ID with Vi01	Amino acid ID with SboM-AG3
RIIA	1-2742 (913)	104,992	None	98%	54%
RIIB	2775-4358 (527)	58,980	None	97%	69%
Putative tail fibre	5502-6311 (269)	27,826	Ig-like I-set domain (CL0011)	86%	86%
DNA topoisomerase II	8523-10,436 (637)	71,862	HATPase c (CL0025) & DNA gyrase B	96%	90%
DNA topoisomerase II (medium subunit)	10,357-11,769 (470)	53,939	DNA topoisomerase IV	88%	88%
Conserved uncharacterized protein	13,309-13,929 (206)	23,005	Putative Macro domain of ADP-ribose binding module (CL0233)	92%	74%
DexA exonuclease	14,263-14,895 (210)	24,438	None	95%	93%
dCMP deaminase	18,704-19,225 (173)	19,460	dCMP cytosine deaminase 1 family-cytidine & deoxycytidylate deaminase Zn-binding domain (CL0109)	97%	62%
Conserved uncharacterized protein	19,227-19,634 (135)	15,378	Bacterial membrane-flanked domain (DUF304)	93%	88%
Head completion protein	19,845-20,465c (206)	24,189	None	92%	74%
Putative homing endonuclease	20,465-21,205c (246)	28,205	GIY-YIG catalytic domain (CL0418)	No match	34%
T4-like baseplate tail tube cap	21,259-22,227 (322)	36,142	T4 tail cap family	100%	94%
Baseplate wedge subunit	22,240-22,797 (185)	21,574	Phage Gp53 family	97%	80%
Loader of T4-like helicase	26,134-26,796c (220)	26,253	T4 helicase N family	99%	79%
DNA ligase	27,281-28,708c (475)	53,501	ATP-dependent DNA ligase domain (CL0078)	95%	83%
DNA primase-helicase subunit	31,451-32,875c (474)	54,192	DnaB-like helicase N & C terminal domains	98%	88%
UvsX (RecA-like protein)	33,189-34,274c (361)	40,791	RecA bacterial DNA recombination proteins (CL0023)	72%	78%
dUTPase	34,789-35,340c (183)	21,114	dUTPase 2 family(CL0231)	69%	63%
Thymidylate synthase	35,903-36,943c (346)	39,216	Thymidylate synthase family	93%	77%
DNA end protector	39,924-40,268c (234)	28,347	None	100%	91%
Baseplate tail tube	40,488-41,624 (378)	42,658	Phage T4 Gp19 family	98%	90%
ssDNA binding protein	41,652-42,683c (343)	38,896	Gp3 DNA binding protein-like domain	98%	77%
Late promoter transcription factor	43,029-43,331c (100)	11,175	None	100%	70%
Regulatory protein (FmdB family)	43,264-43,509c (81)	8732	CXXC CXXC SSSS family containing a Zn ribbon domain (CL0167)	96%	88%
Putative uncharacterized protein	43,875-44,396c (203)	23,739	RuvC family (crossover junction endoribonuclease RuvC)	100%	83%
Baseplate hub subunit	45,471-46,274 (267)	30,186	T4 baseplate family	96%	67%
Tail-associated lysozyme	46,781-48,406 (541)	59,023	Gp5 OB family & CHAP domain (CL0125) associated with peptidoglycan hydrolysis	98%	87%
Baseplate wedge protein	48,471-48,851 (126)	14,124	GPW Gp25 family (gene 25-like lysozyme)	97%	87%
NrdB	50,229-51,332c (367)	42,209	Ribonucleotide reductase small chain domain (CL0044)	99%	89%
NrdA	51,403-53,730c (775)	88,137	ATP-cone domain, ribonucleotide reductase IgN all alpha domain & IgC barrel domain	94%	89%
PhoH-like phosphate starvation-inducible protein	53,764-54,603c (279)	31,567	PhoH-like protein family (CL0023)	100%	88%
Peptidoglycan binding protein	54,711-55,505c (264)	28,815	Peptidoglycan binding protein domain (CL0244) & protein of unknown function (DUF3380)	98%	86%
DNA primase subunit	56,712-57,776c (354)	41,386	None	97%	77%
Conserved uncharacterized protein	63,656-64,273c (205)	22,902	T4 RegB endoribonuclease family (CL0037)	98%	79%

**Table 2 Comparison of  $\Phi$ ? $\Phi$ ?SH19 proteins with those of Vi01 and SboM-AG3 (Continued)**

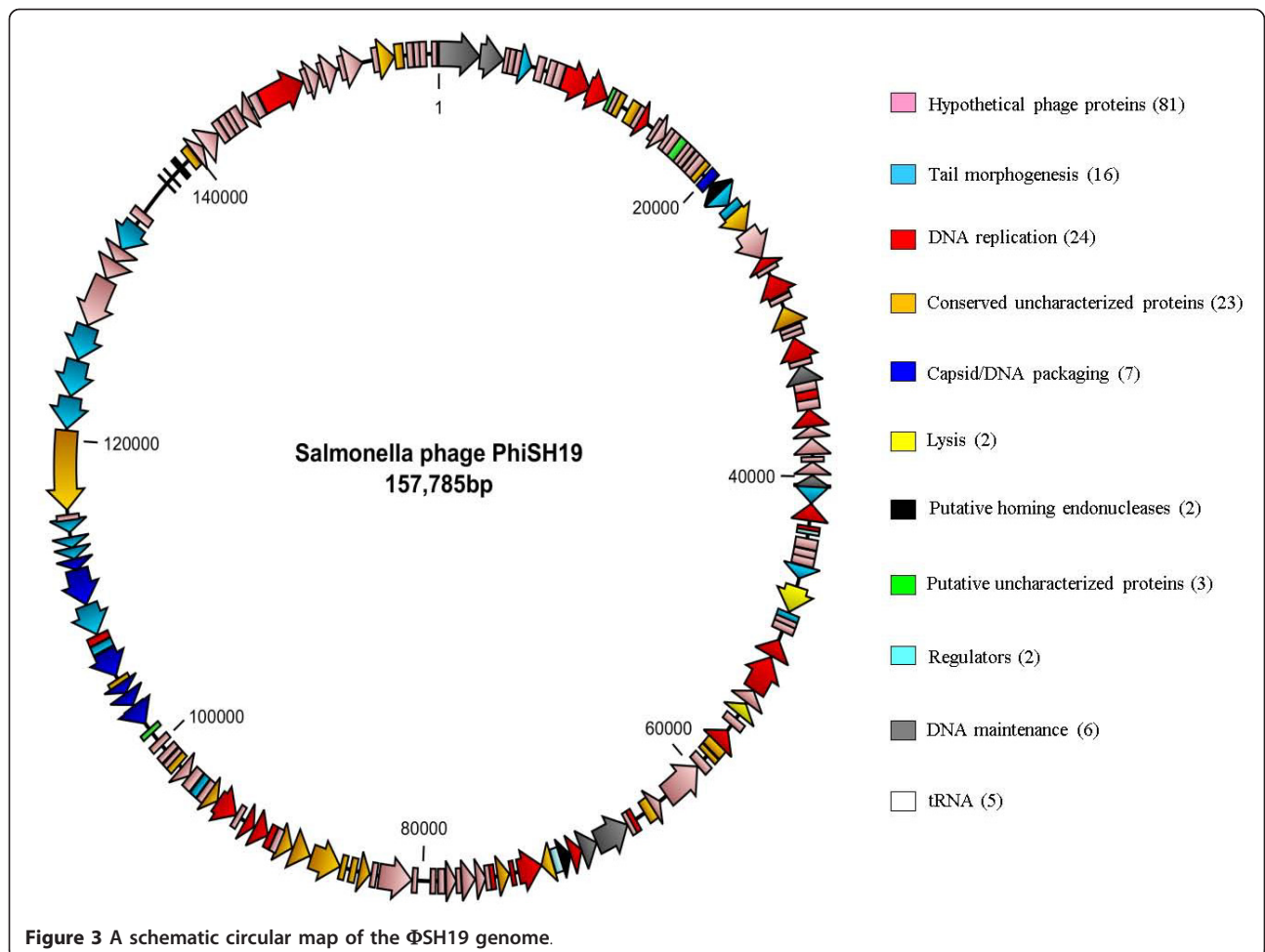
NrdA.1	64,978-65,313c (336)	12,934	None	94%	92%
Recombination endonuclease subunit	65,622-67,955c (777)	88,531	None	98%	72%
Recombination protein subunit	67,958-69,073c (371)	43,030	None	98%	91%
$\sigma$ factor for late transcription	69,060-69,854c (264)	30,775	None	90%	77%
Putative homing endonuclease	69,854-70,576c (240)	27,188	None	No match	36%
RNase H	70,587-71,114c (175)	19,878	RNase H domain (CL0219)	97%	71%
ATP-dependent helicase	71,921-73,522c (533)	60,690	None	99%	86%
DNA binding protein	73,778-74,056c (92)	9728	Bacterial DNA-binding protein domain	100%	86%
Conserved uncharacterized protein	74,140-74,931c (263)	28,556	SPFH domain/Band 7 family (CL0433)	98%	No match
Superinfection exclusion protein	75,137-75,457c (106)	12,562	None	95%	No match
ImpD	75,736-76,407c (223)	25,665	None	95%	74%
Acyl carrier protein	80,335-80,687c (110)	12,162	Phosphoantetheine (PP)-binding family (CL0314)	92%	61%
Conserved uncharacterized protein	84,506-84,925c (139)	15,622	Protein of unknown function (DUF3268)	90%	84%
Putative RegA translational repressor	89,926-90,390c (154)	18,078	Bacteriophage translational regulator	99%	90%
Clamp loader for DNA polymerase	90,420-90,842c (140)	16,200	None	98%	76%
Gp44 sliding clamp holder	90,847-91,836c (329)	37,214	ATPase family (CL0023)	99%	87%
Gp45 sliding clamp holder	91,914-92,582c (222)	24,510	Gp45 sliding clamp C terminal	99%	82%
Putative type III restriction enzyme (RE)	93,293-94,792 (499)	57,802	Type III RE subunit (CL0023) & helicase conserved C terminal domain (CL0023)	95%	81%
Conserved uncharacterized protein	94,822-95,568c (248)	28,911	PD-(D/E)XK nuclease superfamily	97%	86%
Putative UvsY	95,568-96,023c (151)	17,991	UvsY protein family (recombination, repair, & ssDNA binding protein)	93%	85%
Tail completion protein	96,062-96,559c (165)	18,542	T4 Gp19 family	98%	80%
Major capsid protein	101,588-102,910c (440)	48,059	Gp23 major capsid protein family	98%	94%
Prohead core scaffold protein	103,002-103,841c (279)	30,898	None	96%	74%
Prohead protease	103,888-104,556c (222)	24,482	Peptidase U9 family (CL0201)	99%	92%
Portal vertex protein of the head	105,102-106,784c (560)	63,094	T4 Gp20 family	99%	81%
Tail tube protein	106,852-107,385c (177)	19,912	T4 Gp19 family	100%	98%
GIY-YIG endonuclease	107,416-107,874c (152)	17,316	GIY-YIG catalytic domain endonuclease family (CL0418)	95%	32%
Tail sheath protein	107,933-109,828c (631)	68,439	Phage sheath 1 family	98%	92%
Large terminase subunit	109,881-112,091c (736)	84,547	Terminase 6 family	95%	85%
Small terminase subunit	112,072-112,752c (226)	24,825	DNA packaging family (terminase DNA packaging enzyme)	98%	74%
Proximal tail sheath stabilization	112,755-113,453c (232)	26,979	None	98%	80%
Gp14 neck protein	113,456-114,097c (213)	24,759	T4 neck protein family	100%	82%
Gp13 neck protein	114,400-115,209c (269)	31,142	None	99%	87%

**Table 2 Comparison of  $\Phi$ SH19 proteins with those of Vi01 and SboM-AG3 (Continued)**

Tail spike 1	120,710-122,641c (643)	68,851	None	67% (res. 1-171 only)	62% (res. 1-190 only)
Tail spike 2	122,702-124,876c (724)	78,194	Pectate lyase C (CL0268)	86% (res. 1-276 only)	73% (res. 1-161 only)
Tail spike 3	124,992-127,088c (698)	75,785	P22 tail spike family	86% (res. 1-154 only)	46% (res. 1-179 only)
Haemolysin-type calcium binding protein	127,168-130,209c (1013)	108,436	None	81% (res. 1-418 only)	63% (res. 1-404 only)
Baseplate wedge subunit	132,287-134,080c (597)	66,068	None	98%	79%
DNA polymerase	145,442-148,438 (998)	116,583	DNA polymerase family B exonuclease domains (CL0194 & CL0219)	98%	86%
Putative uncharacterized protein	148,776-149,615 (279)	32,346	NT5C family 5' nucleotidase deoxypyrimidine (CL0137)	97%	80%

similarities were identified for Tsp1. Betawrap analyses of the amino acid sequences of each tail spike from  $\Phi$ SH19, Vi01, and SboM-AG3 shows that each of these proteins potentially have the ability to form right-handed parallel  $\beta$ -helical structures. A comparison of each  $\Phi$ SH19 tail spike protein sequence with those of

Vi01 and SboM-AG3, and other homologous proteins in the database revealed the N-terminal residues (1-130) of  $\Phi$ SH19 Tsp1 are highly conserved with the corresponding regions in Vi01 Tsp1 (78% ID), SboM-AG3 Tsp1 (75% ID), and to a lesser degree in Vi01 Tsp3 (56% ID). This N-terminal homology is also shared with the



**Table 3 Putative phage regulatory elements identified by Phire analysis.**

Putative phage regulatory elements		
From	To	Sequence
56,300	56,319	TAGCCATGATGTAATTCCTC
79,926	79,945	CGGTCATGATGTATTTTCCTT
99,487	99,506	TGGTCATGGTGTAGTTTCCTT
101,431	101,450	GTCCCATGATGTATTTTCCTC
104,872	104,891	TTTCCATCATGCATCTCCTT
109,822	109,841	TTGCCATAATATCATTTCCTT
144,434	144,453	TTGCCATGATGTATTTTCCTT

*Salmonella* phage Det7 tail spike (56% ID), and a tail fibre protein from *Enterobacter* phage Ecp1 (42% ID). A sequence motif present in  $\Phi$ SH19 Tsp1 G-G-V-G-L-G-A-W (beginning at residue 143) possibly signifies the boundary at which the catalytic domain of the tail spike begins. No such sequence motif is present in Vi01 Tsp1, however similar sequence motifs are present at analogous positions within SboM-AG3 Tsp1 (G-G-L-S-S-N-W) and Vi01 Tsp3 (G-G-V-G-T-G-A-W). ClustalW2 alignments of phage tail-associated proteins containing derivatives of these motifs at their N-terminal boundaries are shown in Figure 4A. The C-terminus of  $\Phi$ SH19 Tsp1 (residues 300-643) produced no significant alignments with any known proteins. BlastP analyses of Vi01 Tsp1 and SboM-AG3 Tsp1 was performed to identify any functionally-related proteins. However, as with  $\Phi$ SH19 Tsp1, Vi01 Tsp1 produced no significant alignments over the C-terminal region with any protein sequences in the database.

Alignment of  $\Phi$ SH19 Tsp2 with Vi01 Tsp2 (maturation/adhesion protein) and SboM-AG3 Tsp2 shows a high degree of conservation from residues 1-160. At this point SboM-AG3 sequence homology (73% ID over residues 1-162) breaks down with no further identity to either Vi01 or  $\Phi$ SH19 Tsp2. Residues 100-403 in  $\Phi$ SH19 Tsp2 show a weak but significant relationship with a phage structural protein/putative tail fibre (orf 00213) present in SboM-AG3. For  $\Phi$ SH19 Tsp2 and Vi01 Tsp2, homology continues over the first 276 residues (86% ID) at which point the two sequences completely diverge from each other. Another region of low homology (residues 100-316) is also found with a putative tail fibre protein encoded in the Vi01 genome (Vi01 orf 173c). A pectate lyase protein family domain (family 3-CL0268) spanning residues 291-549 was identified during Pfam analysis of  $\Phi$ SH19 Tsp2. The presence of this motif was further confirmed during BlastP analysis, with a number of alignments being made with various glycoside degrading enzymes from a wide range of microorganisms. No significant alignments with the C-terminus of  $\Phi$ SH19 Tsp2 were identified (residues 557-724).

$\Phi$ SH19 Tsp3 alignment with Vi01 Tsp3 shows a high degree of sequence conservation between their N-terminal residues 1-154 (86% ID). However, the corresponding sequence in SboM-AG3 Tsp3 shows similarity over the first 19 residues before a deletion of 63 amino acids, after which the homology is restored between the three tail spike sequences. Interestingly, SboM-AG3 Tsp1 shows a higher degree of conservation with  $\Phi$ SH19 Tsp3 over residues 1-139 (46% ID) than does SboM-AG3 Tsp3. The boundary motif G-G-V-G-L-G-A-W appears in  $\Phi$ SH19 Tsp3 at residues 143-150 with analogous sequences in Vi01 (G-G-V-G-T-G-A-W) and SboM-AG3 (G-G-V-S-S-S-A-W), after which the sequence homologies between all three tail spikes break down. Pfam domain analysis of  $\Phi$ SH19 Tsp3 identified a protein domain (residues 159-698) with significant homology to the P22 tail spike family (PF09251). BlastP analysis produced alignments with Det7 (the first reported Myovirus with a podoviral tail spike), P22, and a number of P22-like phages. The highest degree of homology was found for the tail spike of Det7 (77% ID over the first 300 residues). The sequence motif marking the domain boundary in  $\Phi$ SH19 Tsp3 (G-G-V-G-L-G-A-W) is conserved in Det7. P22 tail spike-like sequences feature three conserved residues that function as catalytic components of the endo-rhamnosidase activity associated with P22 tail spike protein [26,27]. These residues are located in the substrate binding cleft of the P22 tail spike and are conserved in  $\Phi$ SH19 Tsp3 (Figure 4B: Glu-359, Asp-392 and Asp-395).

## Discussion

Bacteriophage  $\Phi$ SH19, a candidate for use as a biocontrol agent against *Salmonella* Typhimurium, was subjected to whole genome sequencing. This process is now viewed as a pre-requisite to using phages as therapeutic agents, especially if they are to be introduced into a food production environment. The presence or absence of genes associated with toxicity or lysogeny will ultimately govern whether or not a potential phage candidate is safe for commercial use.  $\Phi$ SH19 was found to contain no undesirable genes in its 157,785 bp genome making it an excellent candidate for such applications. Also,  $\Phi$ SH19 constitutes a new addition to the Vi01-like phage family (along with *S. Typhi* phage Vi01 and *Shigella* phage SboM-AG3). In many respects  $\Phi$ SH19 is quite similar to Vi01 with the addition of a putative homing endonuclease and a putative uncharacterized protein. Structural genes and those associated with morphology of the phage particle are highly conserved between  $\Phi$ SH19 and Vi01, and to a lesser degree with SboM-AG3. Analysis of the tRNA genes encoded by all three phages, and their location within each genome indicates that some of them are possibly derived from a



### 4A

```

Det7 Tsp                PKVVPAGSTPASTGGVGLGAWVSVGDAAFRQEAN-----KFKYSVKLSDYS 176
SETP12 Tsp             PKVIPAASTPLTAGGISDSAWVAFGDITFRAEAD-----KFKYSVKLSDFT 153
Phi19 Tsp3            PKTVDAGSTPETS GGVLGAWLSVGDAAFRQEAN-----KFKYSVKLSDYS 176
k1H Tsp63D sialidase  PKTIIPASSSPQSTGGVSEGAWRAGSVVLRQQISNANGAILYPDLHVARWKDEYDPRAWG 166
K1G Tsp63D sialidase  PKIIPASSSPQSTGGVADGAWQPVGSVILRQQISDVNGAILYPDLHVARWKDEYDPRAWG 166
K1F tail fibre        PKNVPAGSTPETS GGIGLGAWVSVGDAAALRSQISNPEGAILYPDLHVARWKDEYDPRAWG 245
Vi01 Tsp3            PKVVAAGSTPDNS GGVTGAWIPVGINSLSGDGGWSRIGSEFGKSLKEHIQSLPPLSAVK 189
Phi19 Tsp1           PKTVAPGSTPATTGGVGLGAWVSVGDVSLRSELS-----KEDGFKYIGYS 172
SboM-AG3 orf00207    PKSVNAGGTIANTGGLSSSNWVKLDPDALRDELY-----SGFYRLT 169
EcoDS1 gp17         PKKEVPAGSTPSTTGGVGLGAWVSVGDASLRNLIS-----DNSINGDALI 230
EPECa14 tail fibre   PKDVPENSTPESTGGVSLGAWVSVGDASLRSDLIS-----QETDKGS 293
SboM-AG3 orf 00210  PKTVNKNSTPQSTGGVSSSAWVSVESKTLGSELLTG-----EKASLVG 111
K. pneumoniae prophage tail
                       PKTVPIASSPATTGGVRAGGWAYTSDAAIRQNLAAADSGAKLVGGLNYVTPEMSGFVTGAG 152
ViIII-E1 maturation/adhesion
                       PKTVPPGSTPYSSGGTGNKGWMAVDVADVLRKDLAKPTGANLIGHDTTVGEVLRQKVYI 173
** : .: .:** . * . .
    
```

### 4B

```

ST64T Tsp             GSGVKTWQGTVGSTTSRNYNLQFRDSVVIYPVWGGFGLGAD 400
ST104 Tsp            GSGVKTWQGTVGSTTSRNYNLQFRDSVVIYPVWGGFGLGAD 400
P22 Tsp              GSGVKTWQGTVGSTTSRNYNLQFRDSVVIYPVWGGFGLGAD 400
SETP13 Tsp          GSGVKTWQGTVGSTTSRNYNLQFRDSAVLYPVWGGFGLGAD 421
SETP12 Tsp          GSGVKTWQGTVGSTTSRNYNLQFRDSAVLYPVWGGFGLGAD 421
SP6 Tsp             GSGFKTWQGSVGGTTSRNYNLQFRDSVALSPVWGGFGLGSD 287
Det7 Tsp            GSGFKTYQGSVGGGTARNYNLQFRDSVALSPVWGGFGLGSD 444
19 Tsp3            GSGTKTYQNEIGGRSARNYRLVFDNITTIQCYIYGIIVNAD 440
    
```

### 4C

```

ST64T Tsp             KLSKTLDSGALYSHINVGPGSSSAWTQLTAISGNTPDAVS 606
ST104 Tsp            KLSKTLDSGALYSHINGGPGSSSAWTQLTAISGNTPDAVS 606
P22 Tsp              KLSKTLDSGALYSHINVGPGSSSAWTQLTAISGNTPDAVS 606
SETP13 Tsp          KLSKTLDSGVSYSYSHINGGPGSSSAWTEITAISGSSPDAVS 627
SETP12 Tsp          KLSKTLDSGVSYSRINGGPGSSSAWTEITAISGSLPDAVS 627
SP6 Tsp             KLTKTLDSGAIRSTLNGGPGTGSAWTEMTAISGAPNAVS 493
Det7 Tsp            KLSATLDSGALRSHLNGYAGSSSAWTELTALSGSTPNAVS 650
ΦSH19 Tsp3          MGGTTNPSLLMTADCCVATPGGEASIVKLSAIQEGVVRVGE 641

ST64T Tsp             LKVNHKDCRGAEIPFVPDIASDDFIKDSSCFLPYWENNSTSLKALVKKPNEGELVR 661
ST104 Tsp            LKVNHKDCRGAEIPFVPDIASDDFIKDSSCFLPYWENNSTSLKALVKKPNEGELVR 661
P22 Tsp              LKVNHKDCRGAEIPFVPDIASDDFIKDSSCFLPYWENNSTSLKALVKKPNEGELVR 661
SETP13 Tsp          LKINRGDYRAVEIPVAMSALPDNAVRDIGSISMYLEGD--SLKALVRRADGSYTR 680
SETP12 Tsp          LKINRGDYRAVEIPVAMTVLPDNAVDRNGSISLYLEGD--SLKALVRRADGSYTR 680
SP6 Tsp             LKINRGDFKATEIPVAPTVPDEAVRDHSSIALYFDQE--ALWALVKKPNGSLTR 546
Det7 Tsp            LKVNRGDYKTEIPISGTVLPDEGVLDINTMSLYLDAG--ALWALIRLPDGSKTR 703
ΦSH19 Tsp3          EQENR LGFKHMSIPAAPLQLPESALEHNSSIGFFFGSDG-ALRLLAKKPDGSVVT 695

ST64T Tsp             LTLATL--- 667
ST104 Tsp            LTLATL--- 667
P22 Tsp              LTLATL--- 667
SETP13 Tsp          LTLA----- 684
SETP12 Tsp          LTLA----- 684
SP6 Tsp             MKLA----- 550
Det7 Tsp            MKLSV----- 708
ΦSH19 Tsp3          YTL----- 698
    
```

**Figure 4** A-C ClustalW2 alignments of sequence motifs in tail-associated proteins (4A), the active site of P22-like tail spikes (4B), and the C-terminal region of P22-like tail spikes-yellow-sequence motif (residues 585-596 in P22) associated with intertwined region, green-five-stranded  $\beta$ -sheet and three-stranded  $\beta$ -sheet (residues 601-664 in P22), and red-regions lacking homology in  $\Phi$ SH19 Tsp3 (4C).

common ancestor. Transmission electron microscope images of  $\Phi$ SH19 (Figure 1), Vi01 and SboM-AG3 indicate that their morphologies are quite similar. The intricate 'chandelier-like' arrangements of tail spikes attached to the baseplate are visible for all three phages [22,23]. It seems likely that there are more Vi01-like phages (such as *Escherichia* phage Phax1) capable of infecting a diverse range of bacterial pathogens to be discovered for which there are commercial applications.

The modular structure of the three tail spikes found in  $\Phi$ SH19 is potentially the main driving factor behind host-range determination for this phage. Although no function can at present be assigned to Tsp1, the other two tail spikes contain defined protein domains that provide evidence as to their mode of action. For Tsp2, the pectate lyase domain indicates that this protein may well function to modify or cleave glycoside bonds. The pectate lyase family domain (CL0268) notably contains proteins with pectate/pectin lyase and pectin methyl-esterase activities. The pectate/pectin lyases are a well-characterized family of proteins principally involved in microbial plant pathogenesis. Their primary mode of action involves the eliminative cleavage of  $\alpha$ -1,4 linked galacturonosyl residues of pectins that are components of the middle lamella of plant cell walls. The three dimensional structure of *Erwinia chrysanthemi* EC16 pectate lyase C (PelC) was first solved by Yoder et al. [28] and is representative of a family of proteins containing right-handed parallel  $\beta$ -helical structures with the flexibility to allow protein loops from the stacked coils to add functionality, for example the formation of the active site clefts that support enzyme catalysis [29,30]. Using a similar base architecture pectin methyl-esterase acts to de-esterify pectin to pectate. Members of the pectinolytic protein family are represented in prokaryotic and eukaryotic microorganisms, and also function in plants to remodel cell walls [29]. Divergence from the ancestral sequence over time has allowed different microorganisms to target a range of pectin-like substrates, while the overall structure has been maintained [30]. It is of little surprise that phages have evolved the ability to acquire these proteins and utilize their polysaccharide modifying properties. In the case of  $\Phi$ SH19 Tsp2 it could be postulated that the target is the  $\alpha$ -D-galactose (1-4)  $\alpha$ -D-mannose linkage found in the *S. Typhimurium* O-antigen trisaccharide repeat. Many phage tail-associated proteins have been found to contain right-handed parallel  $\beta$ -helical structural domains, for example phages P22 [31], Sf6 [32], HK620 [33] and Det7 [27]. Moreover the presence of a pectate lyase-type structure in a phage tail spike protein has previously been reported for K5 lyase (KflA) of coliphages K5A and K1-5. KflA targets and degrades the capsular polysaccharide of *E. coli* K5, thus allowing the phage access

to outer membrane receptors [34]. Whilst the precise identity of the polysaccharide target of  $\Phi$ SH19 Tsp2 is at present unknown, it is possible that this tail spike plays a major role in host-range determination. Plaque assays using phages Vi01 and  $\Phi$ SH19 against a panel of *S. Typhimurium* and *S. Typhi* BRD948 indicate that these phages are specific for their host (Table 1). This is perhaps not surprising since Vi01 orf 171c (Vi01 Tsp2) possesses a 9-0-acetyl esterase/acetylxylylan esterase domain (residues 343-445; DUF303) that targets the acetyl-modification of the *S. Typhi* Vi capsule [22]. The pectate lyase domain found in  $\Phi$ SH19 Tsp2 is more than likely involved in the degradation of a polysaccharide present on the surface of *S. Typhimurium* U288. Anany et al. [23] also report that SboM-AG3 is *Shigella*-specific and is unable to form plaques on lawns of any of the *Salmonella*, *Escherichia*, and *Listeria* strains tested.

A protein domain composed of parallel right-handed  $\beta$ -helices is also found in  $\Phi$ SH19 Tsp3-the P22 tail spike domain. Many tail spike proteins possess an N-terminal binding domain involved in attaching the protein to the virion head/tail structure (the sequence of which is often highly conserved between phages with similar morphologies), a central catalytic domain (containing the trimeric parallel right-handed  $\beta$ -helices), and a C-terminal trimerization domain (involved in stabilization of the trimeric tail spike). The trimeric  $\beta$ -helices that form the catalytic domain bind and cleave polysaccharides present in bacterial lipopolysaccharide (LPS). P22 tail spike (Gp9) utilizes this endo-rhamnosidase activity to degrade the *Salmonella* O antigen [35]. Cleavage of  $\alpha$ -L-rhamnose (1-3)  $\alpha$ -D-galactose found in the trisaccharide-repeats of *S. Typhimurium* LPS takes place on the external surface of the tail spike. The structure and arrangement of the parallel  $\beta$ -helix tail spike domains result in a solvent-exposed exterior that features the proposed catalytic residues Glu-359, Asp-392, and Asp-395 [27,36]. The active site residues and their sequence environments are conserved in  $\Phi$ SH19 Tsp3, and therefore can be postulated to operate in a manner akin to the P22 tail spike and its relatives. Thus, there is a possibility that  $\Phi$ SH19 Tsp3 acts in two distinct ways. Firstly,  $\Phi$ SH19 Tsp3 may function as an initial step towards irreversible adsorption of the phage particle to its host, hydrolyzing the outer *S. Typhimurium* LPS layer in order to provide access to a previously inaccessible outer membrane receptor. Secondly, the endo-rhamnosidase activity associated with P22-like tail spikes may aid phage progeny in freeing themselves from cellular debris encountered during host lysis [37].

Tsp3 of  $\Phi$ SH19 has an N-terminal sequence similar to Vi01 orf 172c (Vi01 Tsp3), SboM-AG3 orf 00207 (SboM-AG3 Tsp1) and Det7 tail spike. These phages are

all *Myoviridae* of similar morphologies. Therefore the requirements of having to attach the tail spike to similar base plate structures more than likely places constraints on sequence divergence. Likewise, the alignments for the *Podoviridae* tail spikes show N-terminal conservation between related phage, followed by conserved catalytic and C-terminal domains that are shared between *Myoviridae*, *Podoviridae* and *Siphoviridae*. Interestingly, P22, ST64T, and ST104 as members of the *Podoviridae* are 98-99% identical over their 667 amino acid tail spike proteins, and similarly *Siphoviridae* members SETP12 and SETP13 also have almost identical tail spike sequences. Despite that the SETP 12 and 13 phage sequences are markedly different from P22, ST64T, and ST104 over the N-terminal regions; however, they become conserved between residues 140 to 684. As noted above, there appears to be sequence divergence constraints placed on conserved N-terminal regions associated with the myoviruses  $\Phi$ SH19, Vi01, SboM-AG3 and Det7. Similarly it appears there are structural restrictions imposed on the *Podoviridae* and *Siphoviridae* N-terminal tail spike sequences. Similarities between  $\Phi$ SH19 Tsp3, Det7 and the P22-like sequences begin ten amino acids after the boundary motif G-G-V-G-L-G-A-W that appears in  $\Phi$ SH19 Tsp3 and Det7 (this motif also signals the divergence of the tail spike sequences of phages Vi01 and SboM-AG3 from  $\Phi$ SH19 and Det7).  $\Phi$ SH19 Tsp3 and Det7 Tsp show striking conservation with the P22-like sequences over the catalytic domain, up to and including the active site residues Glu-359, Asp-392 and Asp-395. However, immediately after the active site in  $\Phi$ SH19 Tsp3 (residues 440-698) sequence conservation breaks down.

For P22-like tail spike proteins, the C-terminal residues 585-596 form an intertwined region that allows extensive hydrogen bonding between subunits, whilst residues 606-664 form a five-stranded and a three-stranded  $\beta$ -sheet region [27]. ClustalW2 alignment of these regions show that all the aligned P22-like tail spikes contain conserved residues at these locations (including the Myovirus Det7), that set them apart from  $\Phi$ SH19 Tsp3 (Figure 4C). The eight amino acids spanning residues 585-592 (V/G-G-P/A-G-S/T-G-S-A-W) retain a sequence motif similar to that found at the N-terminal boundary of  $\Phi$ SH19 Tsp3, and the tail-associated proteins aligned in Figure 4A. However, this motif is absent at the C-terminal end of  $\Phi$ SH19 Tsp3. P22-like tail spike modules may well have descended from a common ancestor with the flexibility to diverge their protein sequences whilst retaining the topology of the right-handed parallel  $\beta$ -helices. It has been proposed that this flexibility has allowed the protein domain to become widespread amongst bacteriophages [33], with the possibility of later domain interchange creating further diversity [38].

In summary, we have sequenced the genome of  $\Phi$ SH19, a promising candidate for phage biosanitization of *S. Typhimurium* in the food production environment. The 157,785 bp circular dsDNA genome was found to contain no genes associated with toxicity or lysogeny, which is a pre-requisite for such applications. Analysis of the nucleotide sequence of  $\Phi$ SH19 revealed only two close relatives in the database: *S. Typhi*-specific Vi01 and *Shigella*-specific SboM-AG3 that collectively form the Vi01-like phage family. Major differences were evident between  $\Phi$ SH19 and Vi01 in three different tail spike proteins. Two tail spikes from  $\Phi$ SH19 contain protein domains associated with the degradation of polysaccharides common to *Salmonella* LPS, namely the pectate lyase (Tsp2) and P22 tail spike-like (Tsp3) families of proteins. The acquisition of these domains is the most obvious reason to explain the different host specificities of  $\Phi$ SH19, Vi01 (seemingly host-restricted due to the presence of a Vi antigen-degrading tail spike protein domain) and SboM-AG3 (whose tail spikes are as yet undefined). Based on amino acid sequence analysis the tail spikes from all three phages appear to form right-handed parallel  $\beta$ -helical structures. This appears to be an evolutionarily-conserved structure for all three tail spikes found in the Vi01-like phage. However, this conservation is coupled to the exchange of individual protein domains within these structures that may ultimately determine host range.

## Materials and methods

### Isolation of $\Phi$ SH19

For phage isolation, sewage effluent was filtered through 0.2  $\mu$ m Minisart filters (Sartorius Biotech. Cat. No. 16534) and the filtrate collected in sterile universals and stored at 4°C until required. For *S. Typhimurium* lawn preparation NZCYM broth (Difco Cat. No. 240410) cultures were prepared and incubated overnight at 37°C with shaking. Following this, the overnight culture was used to seed fresh NZCYM broth containing 10 mM MgSO<sub>4</sub> (Sigma Aldrich Chemicals Cat. No. M2643) which was then incubated for 2 hours at 37°C with shaking. To molten (tempered to ~ 50°C) NZCYM top agar containing 0.6% Bacteriological Agar No.1 (Oxoid Cat No. LP0011) 500  $\mu$ L of the required *Salmonella* was added, followed by 500  $\mu$ L filtrate, and the mixture was poured onto NZCYM agar plates. The plates were left to set on the bench for 20 minutes before being inverted then incubated overnight at 37°C. Any plaques identified were picked using sterile pipette tips and resuspended in 500  $\mu$ L SM buffer (50 mM Tris-HCl [pH7.5], 100 mM NaCl, 8 mM MgSO<sub>4</sub>·7H<sub>2</sub>O, 0.01% gelatin, pH 7.5), incubated at 37°C for 1 hour, then serially diluted in SM buffer. A 25  $\mu$ L volume of each dilution was then added to *Salmonella*/NZCYM top agar, and lawns were prepared

as described above. This process was repeated three times in order to obtain a single clonal isolate of  $\Phi$ SH19.

#### Phage host range assays

The ability of phages  $\Phi$ SH19 and Vi01 to lyse various *S. Typhimurium* serovars and *S. Typhi* BRD948 (kindly provided by D. Pickard Wellcome Trust Sanger Centre, UK) was determined as follows. *S. Typhimurium* and *S. Typhi* BRD948 top agar lawns were prepared as described above, with the exception of the latter being grown on supplemented minimal media as described by Tacket et al. [39]. To each bacterial lawn triplicate 20  $\mu$ L volumes of  $\log_{10}^7$  PFU  $\text{mL}^{-1}$  dilutions of the required phage were applied. Following a sufficient drying period, plates were inverted and incubated overnight at 37°C. The following day, each plate was observed for lysis and the results are shown in Table 1.

#### Transmission electron microscopy

A freshly-prepared high titre phage suspension of  $\Phi$ SH19 was sedimented at 34,900  $\times$  g for 2 hours (4°C). Following centrifugation, the supernatant was decanted and each phage pellet was washed twice with 0.1 M ammonium acetate for 1 hour at 25,000  $\times$  g. The wash solution was discarded and 2 mL SM buffer added to each centrifuge tube. Phage pellets were recovered following overnight incubation at 4°C with gentle shaking. A small drop of washed phage suspension was spotted onto a carbon-coated copper mesh grid and allowed to sit for 3 minutes. Excess phage suspension was then removed with filter paper. For negative staining one drop of phosphotungstic acid [pH 7.4] was added to each grid, and excess stain was removed one minute later with filter paper. Each grid was then covered and allowed to dry for 15 minutes. Images were taken with a Fei Tecnai Biotwin TEM (Fei Company, USA).

#### $\Phi$ SH19 DNA extraction and sequencing

A high titre suspension of  $\Phi$ SH19 ( $\sim 10^{10}$  PFU  $\text{mL}^{-1}$ ) was subjected to a single-step caesium chloride (CsCl) purification procedure as follows. CsCl (Melfords Cat. No. MB1006) was added to the high titre phage suspension to a final concentration of 0.75 g  $\text{mL}^{-1}$ . Samples were then subjected to ultracentrifugation at 264,000  $\times$  g for 24 hours in a Beckman TL100 ultracentrifuge (15°C). Extraction of the band containing purified highly-concentrated  $\Phi$ SH19 was then performed with a sterile 20-gauge hypodermic needle, and the band was subsequently collected in a sterile tube. Residual CsCl was removed from the sample using an Amicon<sup>®</sup> Ultra-0.5 30 kDa MWCO centrifugal filter device (Millipore Cat. No. UFC 503008) as follows. Briefly, phage-CsCl solution was added to the column, which was then spun at

17,900  $\times$  g in a benchtop centrifuge for 30 mins. The column was then washed twice with SM buffer at 17,900  $\times$  g for 2 minutes. To elute the retained phage, SM buffer was added to the column which was then inverted and placed in a fresh collection tube. The column was then centrifuged at 17,900  $\times$  g for 10 minutes to recover the phage.  $\Phi$ SH19 DNA was isolated from the purified stock using the phenol-chloroform extraction method with slight modifications as follows. An equal volume of 10 mg  $\text{mL}^{-1}$  Proteinase K (Fisher Scientific Cat No. BPE 1700-500) was added to the CsCl-purified sample, followed by detergent solution (10 ng  $\text{mL}^{-1}$  Proteinase K in 50 mM EDTA, 50 mM Tris-HCl [pH 8], 1% N-lauroyl sarcosine (Sigma Aldrich Chemicals, Cat No. L9150)). The solution was then incubated overnight at 55°C. Following this, phage DNA was extracted using phenol: chloroform and ethanol precipitation [5]. The extracted  $\Phi$ SH19 DNA was purified using a DNA wizard purification kit (Promega, Cat No. A1120) then subjected to whole genome amplification using a Repli-G kit (Qiagen, UK Cat. No. 150023). Genomic DNA was fragmented to 500 bp using a Covaris S2 sonicator (Covaris Inc., USA) and libraries constructed using a NEBNext DNA Sample Prep Master Mix Set 2 (New England Biolabs Cat. No. E6070S). The libraries were subsequently sequenced using the Roche 454 GS FLX system (Roche Diagnostics, USA).

The fully sequenced  $\Phi$ SH19 genome was annotated using a combination of CLC Genomics Workbench (CLC Bio, Denmark) and Artemis software [40]. For comparisons between the genomes of  $\Phi$ SH19, Vi01, and SboM-AG3, ACT software was used [41], and comparison files were generated using the web-based programme Double-ACT [http://www.hpa-bioinfotools.org.uk/pise/double\\_act.html](http://www.hpa-bioinfotools.org.uk/pise/double_act.html). Nucleotide and protein searches were performed using the Blast search algorithm [42]. For the identification of protein domains of known function, searches of the Pfam database were made [43], whilst protein alignments were generated using ClustalW2 [44]. Betawrap was used to identify potential right-handed parallel  $\beta$ -helices in the tail spike proteins encoded by  $\Phi$ SH19, Vi01, and SboM-AG3 [45]. For the identification of phage regulatory elements Phire analysis of the  $\Phi$ SH19 genome was performed [46], and tRNAscan-SE 1.21 was used to identify tRNA genes [47]. The complete annotated  $\Phi$ SH19 genome sequence has been deposited in the NCBI database (Genbank Acc. No. JN126049).

#### Abbreviations

gp: gene product, used in the context of functional homologues to coliphage T4 proteins.

#### Acknowledgements

SPTH is the recipient of a UK Food Standards Agency post-graduate research award.

#### Author details

<sup>1</sup>Division of Food Sciences, School of Biosciences, University of Nottingham, Sutton Bonington Campus, Loughborough LE12 5RD UK. <sup>2</sup>DeepSeq, University of Nottingham, Queens Medical Centre, Nottingham NG7 2UH UK.

#### Authors' contributions

SPTH and IFC contributed to the writing of this manuscript. SPTH contributed to all the experimental work reported here. ART contributed to the assembly and DNA sequence interpretation. JR and RW performed DNA sequencing. IFC was the principal investigator and provided all facilities to complete this work. All authors approved the final manuscript.

#### Competing interests

The authors declare that they have no competing interests.

Received: 28 July 2011 Accepted: 2 November 2011

Published: 2 November 2011

#### References

- Mahony J, McAuliffe O, Ross RP, van Sinderen D: **Bacteriophages as biocontrol agents of food pathogens.** *Curr Opin Biotechnol* 2011, **22**:157-163.
- Atterbury RJ, Connerton PL, Dodd CE, Rees CE, Connerton IF: **Application of host-specific bacteriophages to the surface of chicken skin leads to a reduction in recovery of *Campylobacter jejuni*.** *Appl Environ Microbiol* 2003, **69**:6302-6306.
- Wagenaar JA, Van Bergen MA, Mueller MA, Wassenaar TM, Carlton RM: **Phage therapy reduces *Campylobacter jejuni* colonization in broilers.** *Vet Microbiol* 2005, **109**:275-283.
- Goode D, Allen VM, Barrow PA: **Reduction of experimental *Salmonella* and *Campylobacter* contamination of chicken skin by application of lytic bacteriophages.** *Appl Environ Microbiol* 2003, **69**:5032-5036.
- Loc Carrillo C, Atterbury RJ, el-Shibiny A, Connerton PL, Dillon E, Scott A, Connerton IF: **Bacteriophage therapy to reduce *Campylobacter jejuni* colonization of broiler chickens.** *Appl Environ Microbiol* 2005, **71**:6554-6563.
- O'Flynn G, Ross RP, Fitzgerald GF, Coffey A: **Evaluation of a cocktail of three bacteriophages for biocontrol of *Escherichia coli* O157:H7.** *Appl Environ Microbiol* 2004, **70**:3417-3424.
- Abuladze T, Li M, Menetrez MY, Dean T, Senecal A, Sulakvelidze A: **Bacteriophages reduce experimental contamination of hard surfaces, tomato, spinach, broccoli, and ground beef by *Escherichia coli* O157:H7.** *Appl Environ Microbiol* 2008, **74**:6230-6238.
- Jamalludeen N, Johnson RP, Shewen PE, Gyles CL: **Evaluation of bacteriophages for prevention and treatment of diarrhea due to experimental enterotoxigenic *Escherichia coli* O149 infection of pigs.** *Vet Microbiol* 2009, **136**:135-141.
- Atterbury RJ, Van Bergen MA, Ortiz F, Lovell MA, Harris JA, De Boer A, Wagenaar JA, Allen VM, Barrow PA: **Bacteriophage therapy to reduce salmonella colonization of broiler chickens.** *Appl Environ Microbiol* 2007, **73**:4543-4549.
- Wall SK, Zhang J, Rostagno MH, Ebner PD: **Phage therapy to reduce preprocessing *Salmonella* infections in market-weight swine.** *Appl Environ Microbiol* 2010, **76**:48-53.
- United States Food and Drug Administration. [<http://www.fda.gov/OHRMS/DOCKETS/98fr/cf0559.pdf>].
- Carlton RM, Noordman WH, Biswas B, de Meester ED, Loessner MJ: **Bacteriophage P100 for control of *Listeria monocytogenes* in foods: genome sequence, bioinformatic analyses, oral toxicity study, and application.** *Regul Toxicol Pharmacol* 2005, **43**:301-312.
- Guenther S, Huwyler D, Richard S, Loessner MJ: **Virulent bacteriophage for efficient biocontrol of *Listeria monocytogenes* in ready-to-eat foods.** *Appl Environ Microbiol* 2009, **75**:93-100.
- Soni KA, Nannapaneni R: **Removal of *Listeria monocytogenes* biofilms with bacteriophage P100.** *J Food Prot* 2010, **73**:1519-1524.
- Soni KA, Nannapaneni R, Hagens S: **Reduction of *Listeria monocytogenes* on the surface of fresh channel catfish fillets by bacteriophage Listex P100.** *Foodborne Pathog Dis* 2010, **7**:427-434.
- Merabishvili M, Pirnay JP, Verbeken G, Chanishvili N, Tediashvili M, Lashkhi N, Glonti T, Krylov V, Mast J, Van Parys L, Lavigne R, Volckaert G, Matthews W, Verween G, De Corte P, Rose T, Jennes S, Zizi M, De Vos D, Vaneecoute M: **Quality-controlled small-scale production of a well-defined bacteriophage cocktail for use in human clinical trials.** *PLoS One* 2009, **4**:e4944.
- Gill JJ, Hyman P: **Phage choice, isolation, and preparation for phage therapy.** *Curr Pharm Biotechnol* 2010, **11**:2-14.
- Herold S, Karch H, Schmidt H: **Shiga toxin-encoding bacteriophages—genomes in motion.** *Int J Med Microbiol* 2004, **294**:115-121.
- Allison HE: **Stx-phages: drivers and mediators of the evolution of STEC and STEC-like pathogens.** *Future Microbiol* 2007, **2**:165-174.
- Wagner PL, Waldor MK: **Bacteriophage control of bacterial virulence.** *Infect Immun* 2002, **70**:3985-3993.
- Salmonella in livestock production in GB 2009.** [[http://vla.defra.gov.uk/reports/docs/rep\\_salm09\\_chp4.pdf](http://vla.defra.gov.uk/reports/docs/rep_salm09_chp4.pdf)].
- Pickard D, Toribio AL, Petty NK, van Tonder A, Yu L, Goulding D, Barrell B, Rance R, Harris D, Wetter M, Wain J, Choudhary J, Thomson N, Dougan G: **A conserved acetyl esterase domain targets diverse bacteriophages to the Vi capsular receptor of *Salmonella enterica* serovar Typhi.** *J Bacteriol* 2010, **192**:5746-5754.
- Anany H, Lingohr EJ, Villegas A, Ackermann HW, She YM, Griffiths MW, Kropinski AM: **A *Shigella boydii* bacteriophage which resembles *Salmonella* phage *Vil*.** *Virology* 2011, **8**:242.
- Hooton SP, Atterbury RJ, Connerton IF: **Application of a bacteriophage cocktail to reduce *Salmonella* Typhimurium U288 contamination on pig skin.** *Int J Food Microbiol* .
- De Lappe N, Doran G, O'Connor J, O'Hare C, Cormican M: **Characterization of bacteriophages used in the *Salmonella enterica* serovar Enteritidis phage-typing scheme.** *J Med Microbiol* 2009, **58**:86-93.
- Steinbacher S, Baxa U, Miller S, Weintraub A, Seckler R, Huber R: **Crystal structure of phage P22 tailspike protein complexed with *Salmonella* sp. O-antigen receptors.** *Proc Natl Acad Sci USA* 1996, **93**:10584-10588.
- Walter M, Fiedler C, Grassl R, Biebl M, Rachel R, Hermo-Parrado XL, Llamas-Saiz AL, Seckler R, Miller S, van Raaij MJ: **Structure of the receptor-binding protein of bacteriophage *det7*: a podoviral tail spike in a myovirus.** *J Virol* 2008, **82**:2265-2273.
- Yoder MD, Keen NT, Jurnak F: **New domain motif: the structure of pectate lyase C, a secreted plant virulence factor.** *Science* 1993, **260**:1503-1507.
- Mayans O, Scott M, Connerton I, Gravesen T, Benen J, Visser J, Pickersgill R, Jenkins J: **Two crystal structures of pectin lyase A from *Aspergillus* reveal a pH driven conformational change and striking divergence in the substrate-binding clefts of pectin and pectate lyases.** *Structure* 1997, **5**:677-689.
- Jenkins J, Mayans O, Pickersgill R: **Structure and evolution of parallel beta-helix proteins.** *J Struct Biol* 1998, **122**:236-246.
- Steinbacher S, Seckler R, Miller S, Steipe B, Huber R, Reinemer P: **Crystal structure of P22 tailspike protein: interdigitated subunits in a thermostable trimer.** *Science* 1994, **265**:383-386.
- Muller JJ, Barbirz S, Heinle K, Freiberg A, Seckler R, Heinemann U: **An intersubunit active site between supercoiled parallel beta helices in the trimeric tailspike endorhamnosidase of *Shigella flexneri* Phage Sf6.** *Structure* 2008, **16**:766-775.
- Barbirz S, Muller JJ, Uetrecht C, Clark AJ, Heinemann U, Seckler R: **Crystal structure of *Escherichia coli* phage HK620 tailspike: podoviral tailspike endoglycosidase modules are evolutionarily related.** *Mol Microbiol* 2008, **69**:303-316.
- Thompson JE, Pourhossein M, Waterhouse A, Hudson T, Goldrick M, Derrick JP, Roberts IS: **The K5 lyase KfIA combines a viral tail spike structure with a bacterial polysaccharide lyase mechanism.** *J Biol Chem* 2010, **285**:23963-23969.
- Wollin R, Eriksson U, Lindberg AA: ***Salmonella* bacteriophage glycanases: endorhamnosidase activity of bacteriophages P27, 9NA, and KB1.** *J Virol* 1981, **38**:1025-1033.
- Weigele PR, Scanlon E, King J: **Homotrimeric, beta-stranded viral adhesins and tail proteins.** *J Bacteriol* 2003, **185**:4022-4030.
- Andres D, Baxa U, Hanke C, Seckler R, Barbirz S: **Carbohydrate binding of *Salmonella* phage P22 tailspike protein and its role during host cell infection.** *Biochem Soc Trans* 2010, **38**:1386-1389.
- Casjens SR, Thuman-Commike PA: **Evolution of mosaic related tailed bacteriophage genomes seen through the lens of phage P22 virion assembly.** *Virology* 2011, **411**:393-415.
- Tacket CO, Sztein MB, Losonsky GA, Wasserman SS, Nataro JP, Edelman R, Pickard D, Dougan G, Chatfield SN, Levine MM: **Safety of live oral**

- Salmonella typhi** vaccine strains with deletions in *htrA* and *aroC aroD* and immune response in humans. *Infect Immun* 1997, **65**:452-456.
40. Rutherford K, Parkhill J, Crook J, Horsnell T, Rice P, Rajandream MA, Barrell B: **Artemis: sequence visualization and annotation.** *Bioinformatics* 2000, **16**:944-945.
  41. Carver TJ, Rutherford KM, Berriman M, Rajandream MA, Barrell BG, Parkhill J: **ACT: the Artemis Comparison Tool.** *Bioinformatics* 2005, **21**:3422-3423.
  42. Altschul SF, Gish W, Miller W, Myers EW, Lipman DJ: **Basic local alignment search tool.** *J Mol Biol* 1990, **215**:403-410.
  43. Bateman A, Coin L, Durbin R, Finn RD, Hollich V, Griffiths-Jones S, Khanna A, Marshall M, Moxon S, Sonnhammer EL, Studholme DJ, Yeats C, Eddy SR: **The Pfam protein families database.** *Nucleic Acids Res* 2004, **32**:D138-141.
  44. Larkin MA, Blackshields G, Brown NP, Chenna R, McGettigan PA, McWilliam H, Valentin F, Wallace IM, Wilm A, Lopez R, Thompson JD, Gibson TJ, Higgins DC: **Clustal W and Clustal X version 2.0.** *Bioinformatics* 2007, **23**:2947-2948.
  45. Bradley P, Cowen L, Menke M, King J, Berger B: **BETAWRAP: successful prediction of parallel beta -helices from primary sequence reveals an association with many microbial pathogens.** *Proc Natl Acad Sci USA* 2001, **98**:14819-14824.
  46. Lavigne R, Sun WD, Volckaert G: **PHIRE, a deterministic approach to reveal regulatory elements in bacteriophage genomes.** *Bioinformatics* 2004, **20**:629-635.
  47. Schattner P, Brooks AN, Lowe TM: **The tRNAscan-SE, snoscan and snoGPS web servers for the detection of tRNAs and snoRNAs.** *Nucleic Acids Res* 2005, **33**:W686-689.

doi:10.1186/1743-422X-8-498

**Cite this article as:** Hooton *et al.*: *Salmonella* Typhimurium-specific bacteriophage  $\Phi$ SH19 and the origins of species specificity in the Vi01-like phage family. *Virology Journal* 2011 **8**:498.

**Submit your next manuscript to BioMed Central  
and take full advantage of:**

- Convenient online submission
- Thorough peer review
- No space constraints or color figure charges
- Immediate publication on acceptance
- Inclusion in PubMed, CAS, Scopus and Google Scholar
- Research which is freely available for redistribution

Submit your manuscript at  
[www.biomedcentral.com/submit](http://www.biomedcentral.com/submit)

