

Detecting genes associated with antimicrobial resistance and pathogen virulence in three New Zealand rivers

Meredith Davis^{1,2}, Anne C. Midwinter², Richard Cosgrove³ and Russell G. Death¹

¹ School of Agriculture and the Environment, Massey University, Palmerston North, Manawatu, New Zealand

² Molecular Epidemiology and Veterinary Public Health Laboratory - Hopkirk Research Institute, School of Veterinary Science, Massey University, Palmerston North, Manawatu, New Zealand

³ Fish and Game New Zealand, Temuka, Canterbury, New Zealand

ABSTRACT

The emergence of clinically significant antimicrobial resistance (AMR) in bacteria is frequently attributed to the use of antimicrobials in humans and livestock and is often found concurrently with human and animal pathogens. However, the incidence and natural drivers of antimicrobial resistance and pathogenic virulence in the environment, including waterways and ground water, are poorly understood. Freshwater monitoring for microbial pollution relies on culturing bacterial species indicative of faecal pollution, but detection of genes linked to antimicrobial resistance and/or those linked to virulence is a potentially superior alternative. We collected water and sediment samples in the autumn and spring from three rivers in Canterbury, New Zealand; sites were above and below reaches draining intensive dairy farming. Samples were tested for loci associated with the AMR-related group 1 CTX-M enzyme production (*bla*_{CTX-M}) and Shiga toxin producing *Escherichia coli* (STEC). The *bla*_{CTX-M} locus was only detected during spring and was more prevalent downstream of intensive dairy farms. Loci associated with STEC were detected in both the autumn and spring, again predominantly downstream of intensive dairying. This cross-sectional study suggests that targeted testing of environmental DNA is a useful tool for monitoring waterways. Further studies are now needed to extend our observations across seasons and to examine the relationship between the presence of these genetic elements and the incidence of disease in humans.

Submitted 8 June 2021
Accepted 15 October 2021
Published 3 December 2021

Corresponding author
Meredith Davis,
mtd0053@yahoo.com

Academic editor
Jörg Oehlmann

Additional Information and
Declarations can be found on
page 10

DOI 10.7717/peerj.12440

© Copyright
2021 Davis et al.

Distributed under
Creative Commons CC-BY 4.0

OPEN ACCESS

Subjects Ecology, Microbiology, Molecular Biology, Freshwater Biology, Environmental Contamination and Remediation

Keywords Antimicrobial resistance (AMR), *E. coli*, eDNA, Pathogen, Water quality, Zoonoses

INTRODUCTION

Waterborne diseases are a significant threat to public health and the majority of them are zoonotic (e.g., hosted by animals) (*Cleaveland, Laurenson & Taylor, 2001; World Health Organization, 2011*). There is a growing body of evidence that intensive livestock farming degrades freshwater ecosystems and has the potential to create stores of zoonotic bacteria in rivers (*Monaghan, de Klein & Muirhead, 2008; Daszak et al., 2020; Phiri et al., 2020*). Environmental degradation is a common precursor to infectious disease

emergence (*Pimentel et al., 2007; Daszak et al., 2020*). Therefore, understanding the role of catchment land use and recreation in waterways in the spread of waterborne zoonoses has become even more critical.

Antimicrobial resistant infectious diseases are emerging as one of the most pressing global public health issues (*Hernando-Amado et al., 2019*). Antimicrobial resistance (AMR) is a result of interactions between microbes and their environment, both biotic and abiotic; the predominant driver is considered the use of antibiotics in livestock and humans (*Hernando-Amado et al., 2019*). Patterns of AMR emergence are non-random; however, our ability to predict emergence is limited because it involves interactions between multiple drivers and non-linear patterns associated with human systems (*Daszak, Cunningham & Hyatt, 2000; Jones et al., 2008*). These systems are best investigated using a One Health approach, which considers human, animal, and environmental health as interconnected, providing a useful framework for addressing the emergence and spread of both AMR and zoonotic diseases (*Rubin et al., 2013; Harrison et al., 2020*).

Enterobacteriaceae—including *Escherichia coli*—are recognized as an important group of bacteria that carry AMR in clinical settings (*Pendleton, Gorman & Gilmore, 2013*). Until recently AMR bacteria were primarily of interest in hospital settings (*Cosgrove, 2006; Bancroft, 2007*), but they have increasingly been identified in the environment (*Wyres & Holt, 2018*), wildlife (*Wilharm et al., 2017*) and domestic animals (*Singh, 2018*). The bovine rumen is also a known reservoir for AMR bacteria (*Auffret et al., 2017*). Bacteria residing in the digestive tract are often impacted by antibiotic use and then, in pastoral farming systems, excreted onto land where they are potentially transported into waterways (*Kirchner et al., 2013; Dwivedi, Mohanty & Lesikar, 2016*).

The extended spectrum β -lactamases (ESBL) enzymes provide resistance to beta-lactam antibiotics, including first and third generation cephalosporins, carbapenems and penicillins (*Bonnet, 2004*). The production of ESBLs is an emerging and spreading AMR (*Lewis et al., 2007*). Critically, many of the genes encoding β -lactamase production can be horizontally transferred *via* plasmids (*Carattoli, 2013*). Some ESBLs, specifically the group 1 CTX-M β -lactamases, are recurrently co-morbid with zoonotic pathogens (*e.g.*, Shiga toxin producing *Escherichia coli*–STEC–(*Ishii et al., 2005; Valat et al., 2012*), a group of human pathogens commonly hosted by cows (*Oporto et al., 2019*)). STEC are an important group of zoonoses by themselves; the fourth most reported zoonotic disease in the EU (*European Center for Disease Prevention & Control, 2018*) and USA (*Centers for Disease Control & Prevention, 2018*) and increasing in prevalence in New Zealand (*Public Health Surveillance: Environment Group ESR, 2019*). STEC have been found in recreational waters and are transmitted *via* the oral-faecal route (*Ahmed, Gyawali & Toze, 2015; Swaggerty et al., 2018*).

Molecular characterization is routinely used to classify cultured bacterial isolates, as culturing alone is unable to identify all the genetic components imparting AMR or virulence (*Ram et al., 2009*). Pre-isolation culturing commonly uses an enrichment step prior to molecular characterization which has been found to affect plasmid retention (reportedly up to a 95% loss) and may select against the strains being sought (*Hill & Carlisle, 1981; Sowers, Wells & Strockbine, 1996; Wein et al., 2019*). However, an alternative

is to test environmental DNA (eDNA) directly. This offers a rapid, inexpensive survey of specific genetic elements chosen for their relevance to environmental, animal, or human health, such as loci associated with AMR and/or virulence. Although, this approach does not yield individual pathogenic/AMR colony isolates, it does provide an indication of whether the relevant genetic elements are present and whether further investigation is warranted. Testing samples for genetic loci associated with human pathogens is commonly employed in screening food and has been used in waterways internationally; however, this is a novel variation of those methods and new in New Zealand ([Fraiture et al., 2020](#); [Haberecht et al., 2019](#); [Heijnen & Medema, 2006](#); [Koutsoumanis et al., 2020](#)).

In this case study we tested eDNA collected from sites on three Canterbury, New Zealand rivers during autumn (May) and spring (September), which coincides with seasonal peaks in human STEC cases ([Public Health Surveillance: Environment Group ESR, 2019](#)). We evaluated both benthic sediments and water column samples for seven genes; one, a general indicator of *E. coli* (*uidA*), with the remaining six frequently associated with group 1 CTX-M β -lactamase production (*bla*_{CTX-M}) and human-pathogenic STEC virulence (*stx*₁, *stx*₂ and *eae*) and STEC serotype (O157 *rfbE* and O26 *wzy*).

MATERIALS & METHODS

Sample collection

Two substrates, water and sediment, were sampled, collected from the Ashley, Rangitata, and Selwyn rivers once in austral autumn and spring, 2018. Collections were made at two sites along each river; these sites were 10–15 km apart with one above and the other below reaches draining intensive dairy farms ([Fig. 1](#)). At each site, water and benthic sediment samples were collected in separate sterile containers. Three 1 L water and three 25 g sediment samples were collected at each site. Samples were packed on ice, transported to the laboratory, and processed within 24 h of collection.

Sample processing for bacterial culturing

Water column sample aliquots were diluted 1:10, 1:5, and 1:2.5 with sterile MilliQ H₂O to a final volume of 50 ml. At sites where the level of suspended sediments was high, an additional 1:50 dilution was also prepared to ensure ease of enumeration. For each sample we prepared three technical replicates at each dilution (*i.e.*, 9–12 dilutions per sample).

For sediment samples, 2 g of wet sediment was first transferred to a 5 ml microtube, 3 ml MilliQ H₂O added, and the mixture then agitated vigorously for 30 s. Aliquots of the resulting supernatant were diluted 1:500, 1:200, 1:100, and 1:50 with MilliQ H₂O to a final volume of 50 ml. For each sample we prepared three technical replicates at each dilution (*i.e.*, 12 dilutions per sample).

For each dilution the total 50 ml volume was vacuum filtered through a single sterile 0.45 μ m cellulose ester membrane filter (Merck KGaA, Darmstadt, Germany).

Bacterial culturing

Bacterial culturing followed United States Environmental Protection Agency method 1603 ([United States Environmental Protection Agency \(US EPA\), 2015](#)). Each filter was placed

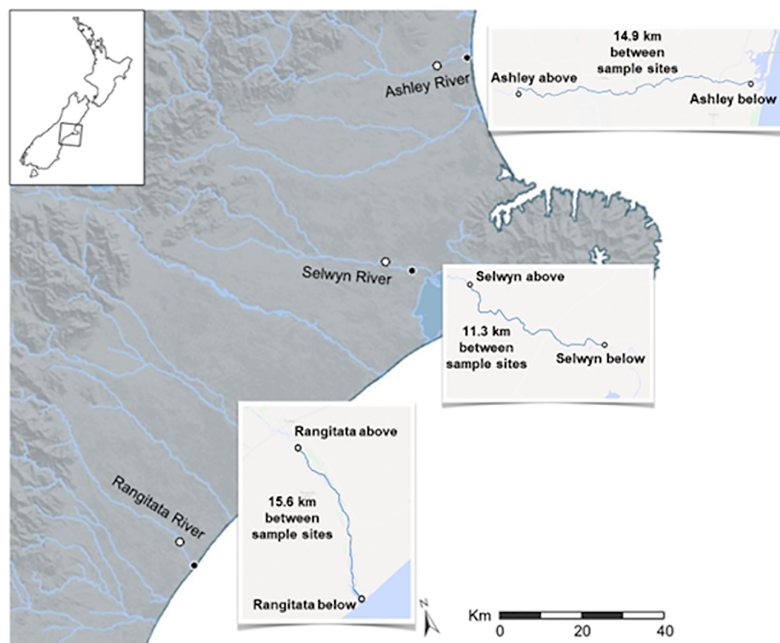


Figure 1 Map of the three Canterbury rivers. Map of central and southern Canterbury, New Zealand with the Ashley, Rangitata, and Selwyn rivers labelled. Locations at which water and sediment were collected during May and September 2018 are marked with circles; for each river the white centered dot indicates the 'above intensive dairy' site and the black centered dot the 'below intensive dairy' site.

Full-size  DOI: [10.7717/peerj.12440/fig-1](https://doi.org/10.7717/peerj.12440/fig-1)

onto a Difco Modified mTEC Agar (VWR, Radnor, PA, USA) plate, incubated at 37.5 °C for 2 h, and then incubated at 45 °C for 18–20 h. Following incubation, colonies indicative of *E. coli* (red/magenta colonies) were counted.

Sample processing for molecular testing

Three 500 ml aliquots of water from each site were vacuum filtered through separate 0.45 µm cellulose ester membrane filters. Environmental DNA was extracted from half of each filter using the NucleoSpin® soil kit (Machery-Nagel GmbH and Co. KG, Düren, Germany) following the manufacturer's instructions. For each sediment sample eDNA was extracted from three 0.5 g aliquots of wet sediment, using the NucleoSpin® soil kit.

Molecular testing for target genes

We evaluated the presence of antimicrobial resistance using a polymerase chain reaction (PCR) targeting the *bla* gene associated with group 1 CTX-M β-lactamases (*bla*_{CTX-M}) using the primers of *Lalzampuia et al. (2013)*. Molecular characterization of STEC focused on genes associated with virulence. Specifically, we targeted genes associated with serogroup specific antigen biosynthesis, *rfbE* for O157 and *wzy* for O26, the *stx*₁ and *stx*₂ toxin genes, and the intimate attachment and effacing gene, *eae*, using the primers reported by *Anklam et al. (2012)*. The detection limits of the STEC assays have been reported at 10³ CFU/ml (*Anklam et al., 2012*) with a specificity to sensitivity ratio at 95:92% for O157 strains 92:91% for O26 strains (*eae*, *stx*₁, and *stx*₂ genes inclusive)

Table 1 Details of the oligonucleotide primers used in this study.

Gene	Primer sequences	Product size	Refs
<i>bla</i> _{CTX-M}	Forward: 5' CCCATGGTTAAAAAACACTGC-3' Reverse: 5' CAGCGCTTTTGCCGCTAAG-3'	950 bp	(Lalzampua et al., 2013)
<i>uidA</i>	Forward: 5' AGTGTGATATCTACCCGCTT-3' Reverse: 5' AGAACGGTTTGTGGTTAATCAG-3'	84 bp	(Anklam et al., 2012)
<i>stx</i> ₁	Forward: 5' GGATAATTTGTTTGCAGTTGATGTC-3' Reverse: 5' CAAATCCTGTACATATAAAATTATTCGT-3'	107 bp	(Anklam et al., 2012)
<i>stx</i> ₂	Forward: 5' GGGCAGTTATTTTGTCTGTGGA-3' Reverse: 5' GAAAGTATTTGTTGCCGTATTAACGA-3'	131 bp	(Anklam et al., 2012)
<i>eae</i>	Forward: 5' CATTGATCAGGATTTTCTGGTGATA-3' Reverse: 5' CTCATGCGGAAATAGCCGTTA-3'	102 bp	(Anklam et al., 2012)
<i>wzy</i> O26	Forward: 5' AGCGTATGTTGATATATTTAATGTC-3' Reverse: 5' AATGTGGTCCCAAGGAATAAAA-3'	141 bp	(Anklam et al., 2012)

Table 2 Presumptive *Escherichia coli* colony counts, in CFU/100 ml, for water and sediment samples collected from the Selwyn, Rangitata, and Ashley rivers during May and September 2018.

Sampling time	Sampling sites and substrates											
	'above intensive dairy'						'below intensive dairy'					
	Ashley water	Ashley sediment	Rangitata water	Rangitata sediment	Selwyn water	Selwyn sediment	Ashley water	Ashley sediment	Rangitata water	Rangitata sediment	Selwyn water	Selwyn sediment
May (autumn)	45	230	20	7,100	10	200	440	730	175	273,300	160	230
September (spring)	20	400	20	5,000	505	200	2,000	3,600	40	1,600	2,250	12,200

(Browne et al., 2018). As an amplification control, we targeted the beta-glucuronidase gene, *uidA*, which is present in most *E. coli* (Table 1) (Anklam et al., 2012).

Amplification reactions were performed in 20 µl reaction volumes containing 0.5 × iQ PerfeCTa® qPCR ToughMix™, ROX™ (QIAGEN, Düsseldorf, Germany), 1 pM of each primer, and 2.5 µl of DNA template. Thermocycling was performed in a T1 thermocycler (Biometra GmbH, Göttingen, Germany) using standard cycling conditions including an initial denaturation at 94 °C for 3 min, followed by 35 cycles of 94 °C for 30 s, 60 °C for 30 s and 72 °C for 1 min, with a final extension at 72 °C for 5 min. Amplification products were visualized using SYBR Safe (ThermoFisher Scientific, Waltham, MA, USA) following electrophoresis in 2% Tris-acetate-ethylenediamine tetraacetic acid agarose gels.

RESULTS

Bacterial culturing

With one exception, (the spring sampling at the 'above intensive dairy' site on the Selwyn River), colonies indicative of *E. coli* were consistently higher from sediment than water column samples (Table 2). Moreover, counts were also higher for all but one sample taken

Table 3 Presence of *Escherichia coli* control (*uidA*), STEC virulence (*stx₁*, *stx₂*, *eae*), serogroup (O26 *wzy* and O157 *rfbE*), and antibiotic resistance (*bla_{CTX-M}*) genes in water and sediment samples collected from the Selwyn, Rangitata, and Ashley rivers during May and September 2018.

Gene locus	Sampling sites and substrates											
	'above intensive dairy'						'below intensive dairy'					
	Ashley water	Ashley sediment	Rangitata water	Rangitata sediment	Selwyn water	Selwyn sediment	Ashley water	Ashley sediment	Rangitata water	Rangitata sediment	Selwyn water	Selwyn sediment
May (autumn)												
<i>uidA</i>	+	+	+	+	+	+	+	+	+	+	+	+
<i>stx₁</i>	-	-	-	-	-	-	+	+	+	-	-	-
<i>stx₂</i>	-	-	-	-	-	-	-	+	+	-	-	-
<i>eae</i>	-	-	-	-	-	-	+	+	+	-	-	-
<i>wzy</i> O26	-	-	-	-	-	-	+	+	+	-	-	-
<i>rfbE</i> O157	-	-	-	-	-	+	+	+	+	-	-	+
<i>bla_{CTX-M}</i>	-	-	-	-	-	-	-	-	-	-	-	-
September (spring)												
<i>uidA</i>	+	+	+	+	+	+	+	+	+	+	+	+
<i>stx₁</i>	-	+	-	+	-	-	-	-	+	-	+	+
<i>stx₂</i>	-	+	-	+	-	+	+	-	-	+	-	+
<i>eae</i>	-	+	+	+	-	+	+	+	+	+	+	+
<i>wzy</i> O26	-	-	-	-	-	-	-	-	+	-	-	-
<i>rfbE</i> O157	-	-	-	-	-	+	-	-	-	+	+	+
<i>bla_{CTX-M}</i>	-	-	-	+	-	-	-	-	+	-	+	+

at the sites 'below intensive dairy' sites. Only the spring sediment sample from the site 'above intensive dairy' on the Rangitata River had a more *E. coli* than the corresponding sample from the site 'below intensive dairy'.

Molecular testing for target genes

The *uidA* locus was successfully amplified from every sample (Table 3). In contrast, detection of the gene associated with antibiotic resistance (*bla_{CTX-M}*) and the three gene loci associated with pathogenic STEC (*stx₁*, *stx₂* and *eae*) varied with location, time and substrate. The antibiotic resistance gene was detected in both substrates, with equal frequency, in samples from the Selwyn and Rangitata rivers. The *stx₁*, *stx₂* and *eae* genes were more frequently detected in water samples in the autumn but in sediment samples in the spring. In both the autumn and spring, serotype genes (O26 *wzy* and O157 *rfbE*) were amplified from the same sample as one or more toxin genes (*stx₁* or *stx₂*) and the

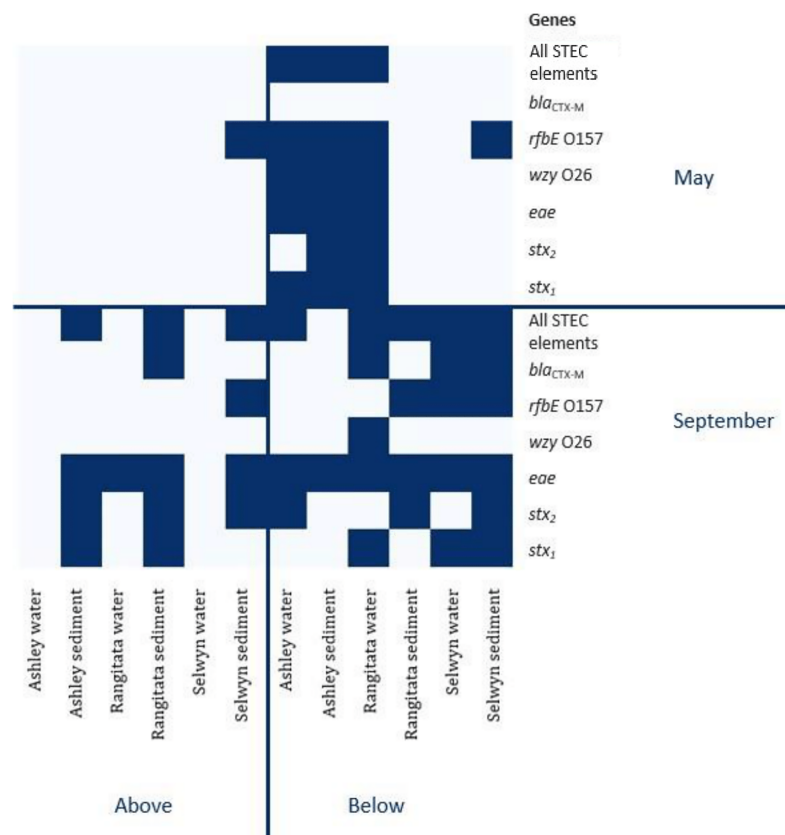


Figure 2 Heatmap of genetic element presence and absence. Heatmap depicting the presence and absence of the six genetic elements associated with human virulence in the Ashley, Rangitata, and Selwyn rivers in May and September of 2018, above and below intensive dairy sites. Locations at which all the elements necessary for human pathogenic STEC are signified by 'All HP STEC elements'.

Full-size DOI: 10.7717/peerj.12440/fig-2

effacement gene (*eae*). The O26 marker was more frequently recovered from water, while that for O157 was more common in sediment.

In autumn, the genes associated with pathogenic STEC O157 (*i.e.*, *stx*₁, *stx*₂, *eae* and *rfbE*) were present in 25% of the samples. All three virulence and both serogroup genes were detected in the autumn, both substrates from the Ashley and the water from the Rangitata had both serotype markers in the 'below intensive dairy' samples. Additionally, the *stx*₁, *eae*, and *rfbE* genes were present in water from the site 'below intensive dairy' on the Ashley River in spring. The *bla*_{CTX-M} gene associated with AMR was not detected in any autumn samples.

In spring the *bla*_{CTX-M} gene was detected in both substrates on the Rangitata and Selwyn rivers and was more frequent 'below intensive dairy'. However, it was also detected in one sediment sample 'above intensive dairy' on the Rangitata. The *stx*₁, *stx*₂ and *eae* STEC virulence genes were detected in all three rivers. The three STEC virulence genes were detected in sediment samples from five of the six sites but only from 'below intensive dairy' in the water samples; the *eae* gene alone, was only detected in water 'above intensive dairy' from the Rangitata (Fig. 2). In spring samples, the gene associated with the O157

serogroup (*rfbE*) was detected 4 times more often than that associated with the O26 serogroup (*wzy*). In three samples *stx*₁, *stx*₂ and *eae* were all detected (Fig. 2); in one of these the gene associated with the O157 serogroup was present but the genes associated with O157 and O26 were not detected in the remaining two. The *stx*₁ and *eae* genes were detected in two water samples from 'below intensive dairy' whereas *stx*₂ and *eae* were detected in three sediment samples, two from 'below' and one 'above intensive dairy'.

DISCUSSION

Research is limited on the prevalence and distribution of AMR and zoonotic bacteria in New Zealand waterways because growing, isolating, and identifying all potential target organisms from the potential millions contained in a single sample is time consuming and costly. In part, this is because identification through culturing is complicated by diverse metabolic requirements and identifying individual organisms present in a sample would require multiple culture methods (Jaros *et al.*, 2013; Irshad *et al.*, 2016). In studies of ESBLs and STEC strains from ruminant faeces and environmental samples the microbial communities are generally enriched prior to DNA-based testing (Muirhead *et al.*, 2004; Gluckman, 2017). The potential impacts of such enrichment on the microbial communities and the associated detection of zoonotic bacteria are difficult to quantify. In the present study, we examined samples for genes associated with AMR and STEC virulence without an initial enrichment step.

In our analyses the genetic markers indicative of *E. coli* (*uidA*) genes were detected in all three of the rivers sampled. Every sample tested positive for the *uidA* gene, consistent with *E. coli* being isolated at all six sites, from both substrates, and at both sampling times using traditional plating.

Using relatively small sample volumes we were able to detect genes associated with both AMR and human pathogenic STEC. Although all the genes associated with human pathogenic STEC virulence (*stx*₁, *stx*₂ and *eae*) and O serotype (O26 *wzy* and O157 *rfbE*) were present in every river, their presence varied by location, substrate, and season. Most importantly, all the genes necessary for human pathogenic STEC (*e.g.*, one toxin gene—*stx*₁ or *stx*₂—and *eae*) were detected within a single sample 11 times and AMR genes were only detected from samples that contained all the genes for human pathogenic STEC. These results suggest that explanations for the distribution of these genes across the landscape are likely to be complex and involve a range of factors.

Escherichia coli levels were higher and AMR and STEC associated genes more common at sites below intensive dairy. These results are consistent with previous reports suggesting that agricultural effluent is a major source of faecal contamination in New Zealand waterways (Gluckman, 2017). Faecal bacteria may be transferred from pastures to waterways *via* run-off; carried either directly by the flow or indirectly as a result of adsorption to soil particles (Palmateer *et al.*, 1993; Muirhead *et al.*, 2004; Byappanahalli & Ishii, 2011). In the current study we sampled adjacent to intensive dairy operations but expected microbial communities to vary along each river as the diversity of land use changes downstream. Microbial communities are likely to be most strongly influenced by adjoining land use but will also be influenced by inputs from upstream. For example, the

*stx*₁ and *stx*₂ genes were only detected at sites above intensive dairy during spring. One explanation for this may be inputs from smaller farms or non-farm inputs upstream of the reaches sampled. Importantly, the detection limit of the STEC assay at 10³ CFU per ml (Anklam *et al.*, 2012) is not so sensitive that a negligible presence of the targeted genetic elements would be over detected. A positive finding suggests that the genetic elements associated with STEC disease in humans were present in the waterways in numbers significant enough to warrant further investigation to ensure public health safety.

The AMR and STEC associated genes occurred at greater frequency in the spring sampling than the autumn sampling. Specifically, the STEC were detected in eight of 12 samples (66%) in the spring and in three of 12 samples (25%) in the autumn whereas the AMR gene was only detected in the spring from two rivers. Detection of the AMR gene during the spring may reflect patterns of antibiotic use on the surrounding farms. Antibiotics are often administered to drying-off cows during winter as well as during spring calving and early milking (Bryan & Hea, 2017), potentially selecting for AMR bacteria in the cow microbiome. Additionally, spring calving likely increases the bacterial load on land bordering these rivers. As calves have poorly developed intestinal biomes, are stressed by weaning, or are removed from their mother prior to receiving colostrum they are prone to colonization by, and heavy shedding of, bacteria, including AMR and STEC strains (Garzio-Hadzick *et al.*, 2010; Gluckman, 2017). In addition to the increased faecal loading on pastures, spring rainfall patterns may lead to higher faecal or other, non-farm related inputs reaching rivers. However, further work including quantification of relevant bacterial genes in water and sediment is required to assess the influence of land-use upon waterways.

In all three of the sampled rivers bacterial colonies indicative of *E. coli* were consistently higher in sediments than the water column. This is a common finding frequently attributed to substrate stability; sediments are less mobile than flowing water, therefore a longer-term and more stable habitat for bacteria (Boehm *et al.*, 2009; Fluke, González-Pinzón & Thomson, 2019). The AMR gene was equally likely to be found in sediment or water; but STEC associated genes were more commonly detected in sediment samples. These results are consistent with previous studies that indicate aquatic sediments may act as a store for *E. coli* (Anderson, Whitlock & Harwood, 2005; Bryan & Hea, 2017). Given that such stores may persist for months or years and that suspended sediments increase *E. coli* levels in the water column, this finding has potentially important implications for monitoring specific pathogenic and CTX-M producing *E. coli* strains (Davies-Colley, Valois & Milne, 2018; Weiskerger & Whitman, 2018). Generally, water testing by environment agencies is restricted to the water column. Although recreational use of waterways is discouraged when levels of suspended sediment are high (*e.g.*, following precipitation) (Davies-Colley, Valois & Milne, 2018), disturbance of sediments by recreational users is not generally considered. Further work is needed to quantify the pathogens associated with the localized mixing of sediment into the water column by recreational users and to determine whether zoonoses are being underestimated by the sampling of a single microhabitat.

CONCLUSIONS

Monitoring of recreational waterways for human pathogens is a complex but important task. In part this can be attributed to the metabolic diversity of the bacteria themselves and the apparent lack of a relationship between faecal indicator bacteria (*e.g.*, counting colonies visually assessed to be *E. coli*) and the presence of genes associated with virulence and/or AMR. Moreover, the virulence or AMR status of isolated bacteria are not routinely assessed leading to delays in risk management. Understanding the relationship between pathogenic bacteria and AMR in recreational waterways would require more intensive sampling over a broader geographic range and the inclusion of multiple substrates in sampling protocols. In most cases monitoring is conducted on samples retrieved from the water column. Such samples may not accurately reflect the microbial community that recreational users of the waterway are potentially exposed to. Our results suggest sediments may act as an important reservoir of bacteria and resuspension of these sediments by waterway users could potentially increase exposure to pathogenic strains.

There is a growing appreciation of new technologies that enable the presence and persistence of zoonoses to be monitored without the need for microbial culturing (*Palmateer et al., 1993; Pilliod et al., 2019*). This represents a fundamental change in our approach to microbial monitoring allowing us to take a holistic view of the riverine environment and improving our ability to protect environmental, animal, and human health. While small, this study is the first step towards understanding zoonoses in waterways at a time when global health is under the microscope.

ACKNOWLEDGEMENTS

Thanks to Martin Taylor and Dr. Richard Winkworth for their assistance.

ADDITIONAL INFORMATION AND DECLARATIONS

Funding

This research was funded by the Fish and Game Council of New Zealand. The funders collected samples.

Grant Disclosures

The following grant information was disclosed by the authors:
Fish and Game Council.

Competing Interests

The authors declare that they have no competing interests.

Author Contributions

- Meredith Davis conceived and designed the experiments, performed the experiments, analyzed the data, prepared figures and/or tables, authored or reviewed drafts of the paper, and approved the final draft.

- Anne C. Midwinter conceived and designed the experiments, authored or reviewed drafts of the paper, and approved the final draft.
- Richard Cosgrove conceived and designed the experiments, authored or reviewed drafts of the paper, and approved the final draft.
- Russell G. Death conceived and designed the experiments, authored or reviewed drafts of the paper, and approved the final draft.

Field Study Permissions

The following information was supplied relating to field study approvals (*i.e.*, approving body and any reference numbers):

Public property, no permit needed.

Data Availability

The following information was supplied regarding data availability:

The data is available in the tables.

REFERENCES

- Ahmed W, Gyawali P, Toze S. 2015. Quantitative PCR measurements of Escherichia coli including Shiga toxin-producing E. coli (STEC) in animal feces and environmental waters. *Environmental Science & Technology* 49(5):3084–3090 DOI 10.1021/es505477n.
- Anderson KL, Whitlock JE, Harwood VJ. 2005. Persistence and differential survival of fecal indicator bacteria in subtropical waters and sediments. *Applied and Environmental Microbiology* 71(6):3041–3048 DOI 10.1128/AEM.71.6.3041-3048.2005.
- Anklam KS, Kanankege KST, Gonzales TK, Kaspar CW, Doepfer D. 2012. Rapid and reliable detection of Shiga toxin-producing Escherichia coli by real-time multiplex PCR. *Journal of Food Protection* 75(4):643–650 DOI 10.4315/0362-028X.JFP-11-392.
- Auffret MD, Dewhurst RJ, Duthie C-A, Rooke JA, Wallace RJ, Freeman TC, Stewart R, Watson M, Roehe R. 2017. The rumen microbiome as a reservoir of antimicrobial resistance and pathogenicity genes is directly affected by diet in beef cattle. *Microbiome* 5(1):1–11 DOI 10.1186/s40168-017-0378-z.
- Boehm AB Jr, Ashbolt NJ, Colford JM Jr, Dunbar LE, Fleming LE, Gold MA, Hansel JA, Hunter PR, Ichida AM, McGee CD. 2009. A sea change ahead for recreational water quality criteria. *Journal of Water and Health* 7(1):9–20 DOI 10.2166/wh.2009.122.
- Bancroft EA. 2007. Antimicrobial resistance: it's not just for hospitals. *JAMA* 298(15):1803–1804 DOI 10.1001/jama.298.15.1803.
- Bonnet R. 2004. Growing group of extended-spectrum β -lactamases: the CTX-M enzymes. *Antimicrobial Agents and Chemotherapy* 48(1):1–14 DOI 10.1128/AAC.48.1.1-14.2004.
- Browne AS, Midwinter AC, Withers H, Cookson AL, Biggs PJ, Marshall JC, Benschop J, Hathaway S, Haack NA, Akhter RN. 2018. Molecular epidemiology of Shiga toxin-producing Escherichia coli (STEC) on New Zealand dairy farms: application of a culture-independent assay and whole-genome sequencing. *Applied and Environmental Microbiology* 84:e00481-18 DOI 10.1128/AEM.00481-18.
- Bryan M, Hea SY. 2017. A survey of antimicrobial use in dairy cows from farms in four regions of New Zealand. *New Zealand Veterinary Journal* 65(2):93–98 DOI 10.1080/00480169.2016.1256794.

- Byappanahalli MN, Ishii S. 2011.** Environmental sources of fecal bacteria. In: Sadowsky MJ, Whitman RL, eds. *The Fecal Bacteria*. Washington D.C., USA: ASM Press, 93–110.
- Carattoli A. 2013.** Plasmids and the spread of resistance. *International Journal of Medical Microbiology* **303**(6–7):298–304 DOI [10.1016/j.ijmm.2013.02.001](https://doi.org/10.1016/j.ijmm.2013.02.001).
- Centers for Disease Control and Prevention. 2018.** National enteric disease surveillance: Shiga toxin-producing Escherichia coli (STEC) annual report 2016. Available at <https://www.cdc.gov/ecoli/surv2016/index.html> (accessed 4 October 2020).
- Cleaveland S, Laurenson MK, Taylor LH. 2001.** Diseases of humans and their domestic mammals: pathogen characteristics, host range and the risk of emergence. *Philosophical Transactions of the Royal Society of London B: Biological Sciences* **356**(1411):991–999 DOI [10.1098/rstb.2001.0889](https://doi.org/10.1098/rstb.2001.0889).
- Cosgrove SE. 2006.** The relationship between antimicrobial resistance and patient outcomes: mortality, length of hospital stay, and health care costs. *Clinical Infectious Diseases* **42**(Supplement_2):S82–S89 DOI [10.1086/499406](https://doi.org/10.1086/499406).
- Daszak P, das Neves C, Amuasi J, Hayman D, Kuiken T, Roche B, Zambrana-Torrel C, Buss P, Dundarova H, Feferholtz Y, Foldvari G, Igbinsola E, Junglen S, Liu Q, Suzan G, Uhart M, Wannous C, Woolaston K, Mosig Reidl P, O'Brien K, Pascual U, Stoett P, Li H, Ngo HT. 2020.** *Workshop report on biodiversity and pandemics of the intergovernmental platform on biodiversity and ecosystem services*. Bonn, Germany: IPBES secretariat.
- Daszak P, Cunningham AA, Hyatt AD. 2000.** Emerging infectious diseases of wildlife—threats to biodiversity and human health. *Science* **287**(5452):443–449 DOI [10.1126/science.287.5452.443](https://doi.org/10.1126/science.287.5452.443).
- Davies-Colley R, Valois A, Milne J. 2018.** Faecal contamination and visual clarity in New Zealand rivers: correlation of key variables affecting swimming suitability. *Journal of Water and Health* **16**(3):329–339 DOI [10.2166/wh.2018.214](https://doi.org/10.2166/wh.2018.214).
- Dwivedi D, Mohanty BP, Lesikar BJ. 2016.** Impact of the linked surface water-soil water-groundwater system on transport of E. coli in the subsurface. *Water, Air, & Soil Pollution* **227**(9):351 DOI [10.1007/s11270-016-3053-2](https://doi.org/10.1007/s11270-016-3053-2).
- European Center for Disease Prevention and Control. 2018.** Annual epidemiological report for 2016 Shiga-toxin/verocytotoxin-producing Escherichia coli (STEC/VTEC) infection. Available at <https://www.ecdc.europa.eu/en/publications-data/shiga-toxinverocytotoxin-producing-escherichia-coli-stecvtec-infection-annual> (accessed 4 October 2019).
- Fluke J, González-Pinzón R, Thomson B. 2019.** Riverbed sediments control the spatiotemporal variability of E. coli in a highly managed, arid river. *Frontiers in Water* **1**:4 DOI [10.3389/frwa.2019.00004](https://doi.org/10.3389/frwa.2019.00004).
- Fraiture M-A, Deckers M, Papazova N, Roosens NHC. 2020.** Detection strategy targeting a chloramphenicol resistance gene from genetically modified bacteria in food and feed products. *Food Control* **108**:106873 DOI [10.1016/j.foodcont.2019.106873](https://doi.org/10.1016/j.foodcont.2019.106873).
- Garzio-Hadzick A, Shelton DR, Hill RL, Pachepsky YA, Guber AK, Rowland R. 2010.** Survival of manure-borne E. coli in streambed sediment: effects of temperature and sediment properties. *Water Research* **44**(9):2753–2762 DOI [10.1016/j.watres.2010.02.011](https://doi.org/10.1016/j.watres.2010.02.011).
- Gluckman P. 2017.** *New Zealand's fresh waters: values, state, trends and human impacts*. Wellington, New Zealand: Office of the Prime Minister's Chief Science Advisor, 1–120.
- Haberecht HB, Nealon NJ, Gilliland JR, Holder AV, Runyan C, Oppel RC, Ibrahim HM, Mueller L, Schrupp F, Vilchez S. 2019.** Antimicrobial-resistant Escherichia coli from environmental waters in Northern Colorado. *Journal of Environmental and Public Health* **18**(2):e05967 DOI [10.1155/2019/3862949](https://doi.org/10.1155/2019/3862949).
- Harrison S, Baker MG, Benschop J, Death RG, French NP, Harmsworth G, Lake RJ, Lamont IL, Priest PC, Ussher JE. 2020.** One Health Aotearoa: a transdisciplinary initiative to improve

- human, animal and environmental health in New Zealand. *One Health Outlook* **2**(1):1–6 DOI [10.1186/s42522-020-0011-0](https://doi.org/10.1186/s42522-020-0011-0).
- Heijnen L, Medema G. 2006.** Quantitative detection of *E. coli*, *E. coli* O157 and other Shiga toxin producing *E. coli* in water samples using a culture method combined with real-time PCR. *Journal of Water and Health* **4**(4):487–498 DOI [10.2166/wh.2006.0032](https://doi.org/10.2166/wh.2006.0032).
- Hernando-Amado S, Coque TM, Baquero F, Martínez JL. 2019.** Defining and combating antibiotic resistance from one health and global health perspectives. *Nature Microbiology* **4**(9):1432–1442 DOI [10.1038/s41564-019-0503-9](https://doi.org/10.1038/s41564-019-0503-9).
- Hill WE, Carlisle CL. 1981.** Loss of plasmids during enrichment for *Escherichia coli*. *Applied and Environmental Microbiology* **41**(4):1046–1048 DOI [10.1128/aem.41.4.1046-1048.1981](https://doi.org/10.1128/aem.41.4.1046-1048.1981).
- Irshad H, Cookson AL, Ross CM, Jaros P, Prattley DJ, Donnison A, McBride G, Marshall J, French NP. 2016.** Diversity and relatedness of Shiga toxin-producing *Escherichia coli* and *Campylobacter jejuni* between farms in a dairy catchment. *Epidemiology & Infection* **144**(7):1406–1417 DOI [10.1017/S0950268815002782](https://doi.org/10.1017/S0950268815002782).
- Ishii Y, Kimura S, Alba J, Shiroto K, Otsuka M, Hashizume N, Tamura K, Yamaguchi K. 2005.** Extended-spectrum β -lactamase-producing Shiga toxin gene (*stx1*)-positive *Escherichia coli* O26: H11: a new concern. *Journal of Clinical Microbiology* **43**(3):1072–1075 DOI [10.1128/JCM.43.3.1072-1075.2005](https://doi.org/10.1128/JCM.43.3.1072-1075.2005).
- Jaros P, Cookson AL, Campbell DM, Besser TE, Shringi S, Mackereth GF, Lim E, Lopez L, Dufour M, Marshall JC. 2013.** A prospective case-control and molecular epidemiological study of human cases of Shiga toxin-producing *Escherichia coli* in New Zealand. *BMC Infectious Diseases* **13**(1):450 DOI [10.1186/1471-2334-13-450](https://doi.org/10.1186/1471-2334-13-450).
- Jones KE, Patel NG, Levy MA, Storeygard A, Balk D, Gittleman JL, Daszak P. 2008.** Global trends in emerging infectious diseases. *Nature* **451**(7181):990–993 DOI [10.1038/nature06536](https://doi.org/10.1038/nature06536).
- Kirchner M, Mafura M, Hunt T, Card R, Anjum MF. 2013.** Antibiotic resistance gene profiling of faecal and oral anaerobes collected during an antibiotic challenge trial. *Anaerobe* **23**:20–22 DOI [10.1016/j.anaerobe.2013.07.011](https://doi.org/10.1016/j.anaerobe.2013.07.011).
- Koutsoumanis K, Allende A, Alvarez-Ordóñez A, Bover-Cid S, Chemaly M, Davies R, De Cesare A, Herman L, Hilbert F. 2020.** Pathogenicity assessment of Shiga toxin-producing *Escherichia coli* (STEC) and the public health risk posed by contamination of food with STEC. *EFSA Journal* **18**:e05967 DOI [10.2903/j.efsa.2020.5967](https://doi.org/10.2903/j.efsa.2020.5967).
- Lalzampaia H, Dutta TK, Warjri I, Chandra R. 2013.** PCR-based detection of extended-spectrum β -lactamases (*bla* CTX-M-1 and *bla* TEM) in *Escherichia coli*, *Salmonella* spp. and *Klebsiella pneumoniae* isolated from pigs in North Eastern India (Mizoram). *Indian Journal of Microbiology* **53**(3):291–296 DOI [10.1007/s12088-013-0378-z](https://doi.org/10.1007/s12088-013-0378-z).
- Lewis JS, Herrera M, Wickes B, Patterson JE, Jorgensen JH. 2007.** First report of the emergence of CTX-M-type extended-spectrum β -lactamases (ESBLs) as the predominant ESBL isolated in a US health care system. *Antimicrobial Agents and Chemotherapy* **51**(11):4015–4021 DOI [10.1128/AAC.00576-07](https://doi.org/10.1128/AAC.00576-07).
- Monaghan RM, de Klein CAM, Muirhead RW. 2008.** Prioritisation of farm scale remediation efforts for reducing losses of nutrients and faecal indicator organisms to waterways: a case study of New Zealand dairy farming. *Journal of Environmental Management* **87**(4):609–622 DOI [10.1016/j.jenvman.2006.07.017](https://doi.org/10.1016/j.jenvman.2006.07.017).
- Muirhead RW, Davies-Colley RJ, Donnison AM, Nagels JW. 2004.** Faecal bacteria yields in artificial flood events: quantifying in-stream stores. *Water Research* **38**(5):1215–1224 DOI [10.1016/j.watres.2003.12.010](https://doi.org/10.1016/j.watres.2003.12.010).

- Oporto B, Ocejo M, Alkorta M, Marimón JM, Montes M, Hurtado A. 2019.** Zoonotic approach to Shiga toxin-producing *Escherichia coli*: integrated analysis of virulence and antimicrobial resistance in ruminants and humans. *Epidemiology & Infection* **147**:497 DOI [10.1017/S0950268819000566](https://doi.org/10.1017/S0950268819000566).
- Palmateer GA, McLean DE, Kutas WL, Meissner SM. 1993.** *Suspended panicle/bacterial interaction in agricultural drains*. Michigan: Lewis Publishers.
- Pendleton JN, Gorman SP, Gilmore BF. 2013.** Clinical relevance of the ESKAPE pathogens. *Expert Review of Anti-infective Therapy* **11**(3):297–308 DOI [10.1586/eri.13.12](https://doi.org/10.1586/eri.13.12).
- Phiri BJ, Pita AB, Hayman DTS, Biggs PJ, Davis MT, Fayaz A, Canning AD, French NP, Death RG. 2020.** Does land use affect pathogen presence in New Zealand drinking water supplies? *Water Research* **185**(9821):116229 DOI [10.1016/j.watres.2020.116229](https://doi.org/10.1016/j.watres.2020.116229).
- Pilliod DS, Laramie MB, MacCoy D, Maclean S. 2019.** Integration of eDNA-based biological monitoring within the US geological survey's national streamgauge network. *JAWRA Journal of the American Water Resources Association* **55**(6):1505–1518 DOI [10.1111/1752-1688.12800](https://doi.org/10.1111/1752-1688.12800).
- Pimentel D, Cooperstein S, Randell H, Filiberto D, Sorrentino S, Kaye B, Nicklin C, Yagi J, Brian J, O'herm J. 2007.** Ecology of increasing diseases: population growth and environmental degradation. *Human Ecology* **35**(6):653–668 DOI [10.1007/s10745-007-9128-3](https://doi.org/10.1007/s10745-007-9128-3).
- Public Health Surveillance: Environment Group ESR. 2019.** Surveillance report: notifiable diseases in New Zealand 2017. Available at https://surv.esr.cri.nz/surveillance/annual_surveillance.php?we_objectID=4930 (accessed 4 October 2019).
- Ram S, Vajpayee P, Singh RL, Shanker R. 2009.** Surface water of a perennial river exhibits multi-antimicrobial resistant Shiga toxin and enterotoxin producing *Escherichia coli*. *Ecotoxicology and Environmental Safety* **72**(2):490–495 DOI [10.1016/j.ecoenv.2008.06.006](https://doi.org/10.1016/j.ecoenv.2008.06.006).
- Rubin C, Myers T, Stokes W, Dunham B, Harris S, Lautner B, Anelli J. 2013.** Review of institute of medicine and national research council recommendations for one health initiative. *Emerging Infectious Diseases* **19**(12):1913 DOI [10.3201/eid1912.121659](https://doi.org/10.3201/eid1912.121659).
- Singh BR. 2018.** ESKAPE pathogens in animals and their antimicrobial drug resistance pattern. *Journal of Dairy, Veterinary & Animal Research* **7**(3):1–10 DOI [10.19080/JDVS.2018.07.555715](https://doi.org/10.19080/JDVS.2018.07.555715).
- Sowers EG, Wells JG, Strockbine NA. 1996.** Evaluation of commercial latex reagents for identification of O157 and H7 antigens of *Escherichia coli*. *Journal of Clinical Microbiology* **34**(5):1286–1289 DOI [10.1128/jcm.34.5.1286-1289.1996](https://doi.org/10.1128/jcm.34.5.1286-1289.1996).
- Swaggerty CL, Corcionivoschi N, Ricke SC, Callaway TR. 2018.** The first 30 years of Shiga toxin-producing *Escherichia coli* in cattle production: incidence, preharvest ecology, and management. In: Ricke SC, Atungulu GG, Rainwater CE, Park SH, eds. *Food and Reed Safety Systems and Analysis*. London, UK: Elsevier, 117–131.
- United States Environmental Protection Agency (US EPA). 2015.** Method 1603: *Escherichia coli* (*E. coli*) in water by membrane filtration using modified membrane-thermotolerant *Escherichia coli* agar (modified mTEC). Available at https://www.epa.gov/sites/production/files/2015-08/documents/method_1603_2009.pdf (accessed 4 October 2019).
- Valat C, Haenni M, Saras E, Auvray F, Forest K, Oswald E, Madec J-Y. 2012.** CTX-M-15 extended-spectrum β -lactamase in a Shiga toxin-producing *Escherichia coli* isolate of serotype O111: H8. *Applied and Environmental Microbiology* **78**(4):1308–1309 DOI [10.1128/AEM.06997-11](https://doi.org/10.1128/AEM.06997-11).
- Wein T, Hülter NF, Mizrahi I, Dagan T. 2019.** Emergence of plasmid stability under non-selective conditions maintains antibiotic resistance. *Nature Communications* **10**(1):1–13 DOI [10.1038/s41467-019-10600-7](https://doi.org/10.1038/s41467-019-10600-7).

- Weiskerger CJ, Whitman RL. 2018.** Monitoring *E. coli* in a changing beachscape. *Science of the Total Environment* **619**(3):1236–1246 DOI [10.1016/j.scitotenv.2017.11.167](https://doi.org/10.1016/j.scitotenv.2017.11.167).
- Wilharm G, Skiebe E, Higgins PG, Poppel MT, Blaschke U, Leser S, Heider C, Heindorf M, Brauner P, Jäckel U. 2017.** Relatedness of wildlife and livestock avian isolates of the nosocomial pathogen *Acinetobacter baumannii* to lineages spread in hospitals worldwide. *Environmental Microbiology* **19**(10):4349–4364 DOI [10.1111/1462-2920.13931](https://doi.org/10.1111/1462-2920.13931).
- World Health Organization. 2011.** *Technical guidance on water-related disease surveillance*. Copenhagen: WHO Regional Office for Europe.
- Wyres KL, Holt KE. 2018.** *Klebsiella pneumoniae* as a key trafficker of drug resistance genes from environmental to clinically important bacteria. *Current Opinion in Microbiology* **45**:131–139 DOI [10.1016/j.mib.2018.04.004](https://doi.org/10.1016/j.mib.2018.04.004).