

# Cell motion predicts human epidermal stemness

Daisuke Nanba,<sup>1,2</sup> Fujio Toki,<sup>2</sup> Sota Tate,<sup>2</sup> Matome Imai,<sup>2</sup> Natsuki Matsushita,<sup>4</sup> Ken Shiraiishi,<sup>3</sup> Koji Sayama,<sup>3</sup> Hiroshi Toki,<sup>5</sup> Shigeki Higashiyama,<sup>1,2</sup> and Yann Barrandon<sup>6,7</sup>

<sup>1</sup>Division of Cell Growth and Tumor Regulation, Proteo-Science Center; <sup>2</sup>Department of Biochemistry and Molecular Genetics and <sup>3</sup>Department of Dermatology, Graduate School of Medicine; and <sup>4</sup>Translational Research Center, Ehime University Hospital, Ehime University, Toon, Ehime 791-0295, Japan

<sup>5</sup>Research Center for Nuclear Physics, Osaka University, Ibaraki, Osaka 567-0047, Japan

<sup>6</sup>Laboratory of Stem Cell Dynamics, École Polytechnique Fédérale de Lausanne, CH-1015 Lausanne, Switzerland

<sup>7</sup>Department of Experimental Surgery, Centre Hospitalier Universitaire Vaudois, CH-1011 Lausanne, Switzerland

Image-based identification of cultured stem cells and noninvasive evaluation of their proliferative capacity advance cell therapy and stem cell research. Here we demonstrate that human keratinocyte stem cells can be identified *in situ* by analyzing cell motion during their cultivation. Modeling experiments suggested that the clonal type of cultured human clonogenic keratinocytes can be efficiently determined by analysis of early cell movement. Image analysis experiments demonstrated that keratinocyte stem cells indeed display a unique rotational movement

that can be identified as early as the two-cell stage colony. We also demonstrate that  $\alpha 6$  integrin is required for both rotational and collective cell motion. Our experiments provide, for the first time, strong evidence that cell motion and epidermal stemness are linked. We conclude that early identification of human keratinocyte stem cells by image analysis of cell movement is a valid parameter for quality control of cultured keratinocytes for transplantation.

## Introduction

*Ex vivo* maintenance and expansion and subsequent transplantation of adult stem cells are indispensable for successful cell therapy of self-renewing tissues, such as the epidermis and cornea epithelium. Adult stem cells maintain their stem cell properties throughout cell culture. After transplantation, they permanently engraft, self-renew, and properly produce functional progenies, which results in long-term therapeutic success (De Luca et al., 2006; Barrandon et al., 2012). Human epidermal keratinocyte stem cells (holoclones; Barrandon and Green, 1987b) can be cultivated under suitable conditions (Rheinwald and Green, 1975), and a single holoclone can generate a progeny large enough to entirely reconstitute the epidermis of an adult human for a lifetime (Rochat et al., 1994; Mathor et al., 1996). This has enabled the autologous transplantation of cultured keratinocytes onto patients with extensive burns (Gallico et al., 1984; Pellegrini et al., 1999; Ronfard et al., 2000) and genetic disorders (Mavilio et al., 2006; De Rosa et al., 2014), and the successful application of human stem cells for regenerative medicine (De Luca et al., 2006; Green, 2008; Barrandon et al., 2012; Fuchs, 2012).

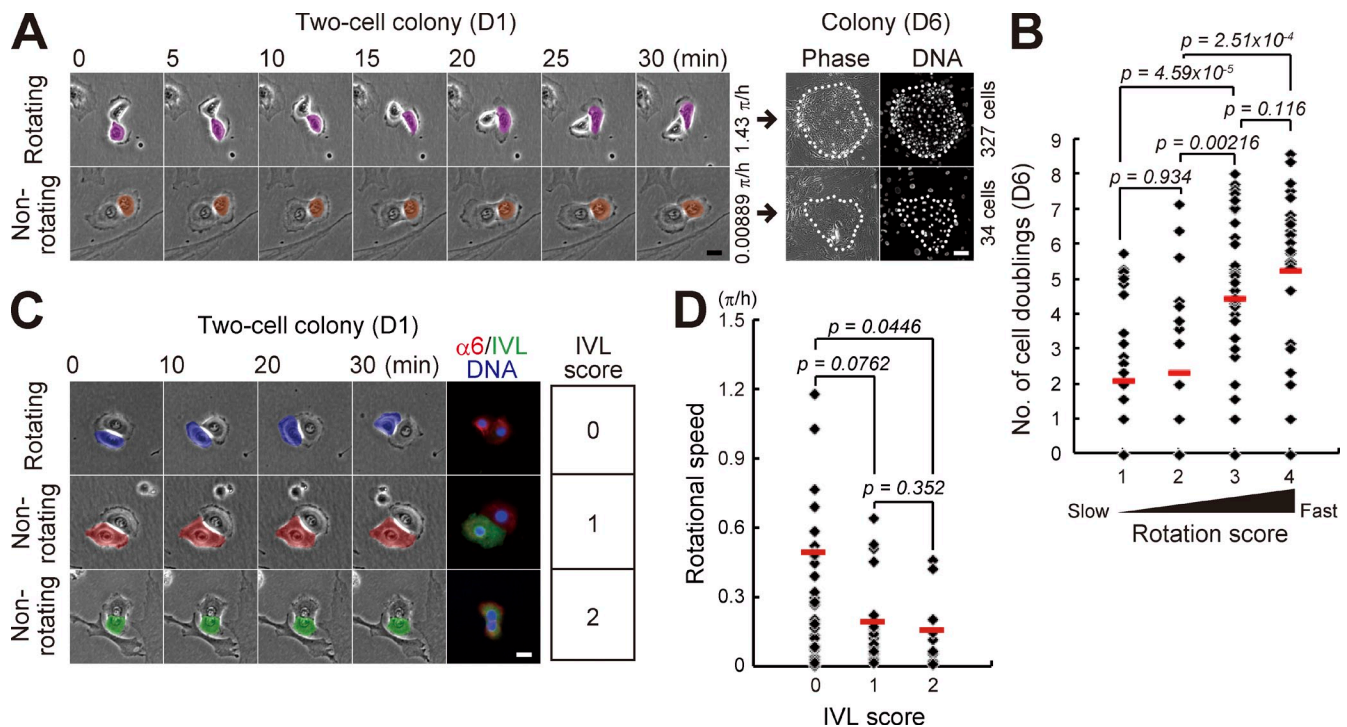
A human keratinocyte culture also contains other clonogenic keratinocytes with restricted growth capabilities (Barrandon and Green, 1987b): progenitor cells (meroclones), which can regenerate an epidermis for a short duration, and transient amplifying cells (paraclones) that cannot regenerate an epidermis at all. Holoclones are eventually converted into meroclones or paraclones during serial cultivation (Barrandon et al., 2012; Rochat et al., 2012), and the loss of holoclones hinders successful transplantation (Rama et al., 2010; Pellegrini et al., 2013). Hence, for regenerative medicine, the determination of number of holoclones in a keratinocyte culture is the best criteria to assess quality (Rama et al., 2010; Barrandon et al., 2012; Rochat et al., 2012; Pellegrini et al., 2013). However, holoclones have been discriminated from meroclones and paraclones by *ex post* clonal analysis (Barrandon and Green, 1987b) and expression of transcription factor p63 (Pellegrini et al., 2001). A holoclone assay takes 19 d to perform (Barrandon and Green, 1987b; Barrandon et al., 2012), and that has limited its usefulness for regenerative medicine applications.

Expression of cell surface proteins including  $\alpha 1$ ,  $\alpha 2$ ,  $\alpha 4$ ,  $\alpha 6$ ,  $\beta 1$ , and  $\beta 4$  integrin subunits, transferin receptor,

Correspondence to Daisuke Nanba: nanba.daisuke.mk@ehime-u.ac.jp; or Yann Barrandon: yann.barrandon@epfl.ch

Abbreviations used in this paper: CCW, counterclockwise; IVL, involucrin.

© 2015 Nanba et al. This article is distributed under the terms of an Attribution–Noncommercial–Share Alike–No Mirror Sites license for the first six months after the publication date [see <http://www.rupress.org/terms>]. After six months it is available under a Creative Commons License [Attribution–Noncommercial–Share Alike 3.0 Unported license, as described at <http://creativecommons.org/licenses/by-nc-sa/3.0/>].



**Figure 1. Rotational speed of two-cell colonies of keratinocytes is positively correlated with their proliferative capacity.** (A, left) Motion of paired human epidermal keratinocytes. (right) Clonal growth of two-cell colonies was traced and proliferative capacity was evaluated by counting cell number in the colony after 6 d of cultivation with Hoechst 33325. Bars, 20  $\mu\text{m}$ . (B) Correlation between rotational speed in the two-cell colony stage (D1) and proliferative capacity (number of cell doublings) after 6 d of cultivation. Two-cell colonies were categorized in four groups depending on rotational speed: rotation score 1 ( $<0.125 \pi/h$ ), rotation score 2 ( $\geq 0.125 \pi/h$  and  $<0.25 \pi/h$ ), rotation score 3 ( $\geq 0.25 \pi/h$  and  $<0.5 \pi/h$ ), and rotation score 4 ( $\geq 0.5 \pi/h$ ). The data shown ( $n = 126$  colonies) were obtained from nine independent experiments. P-value was calculated by Mann-Whitney nonparametric  $U$  test. Full set of data is shown in Fig. S1 A. (C) Rotational motion and expression of IVL in two-cell colonies of keratinocytes. IVL expression was categorized in three groups depending on the number of IVL-expressing cells: IVL score 0, no cells; IVL score 1, single cell; and IVL score 2, two cells. Bar, 20  $\mu\text{m}$ . (D) Frequency of two-cell colonies of keratinocytes with each rotation and IVL scores. The data shown ( $n = 63$  colonies) were obtained from triplicate experiments. P-value was calculated by Mann-Whitney nonparametric  $U$  test.

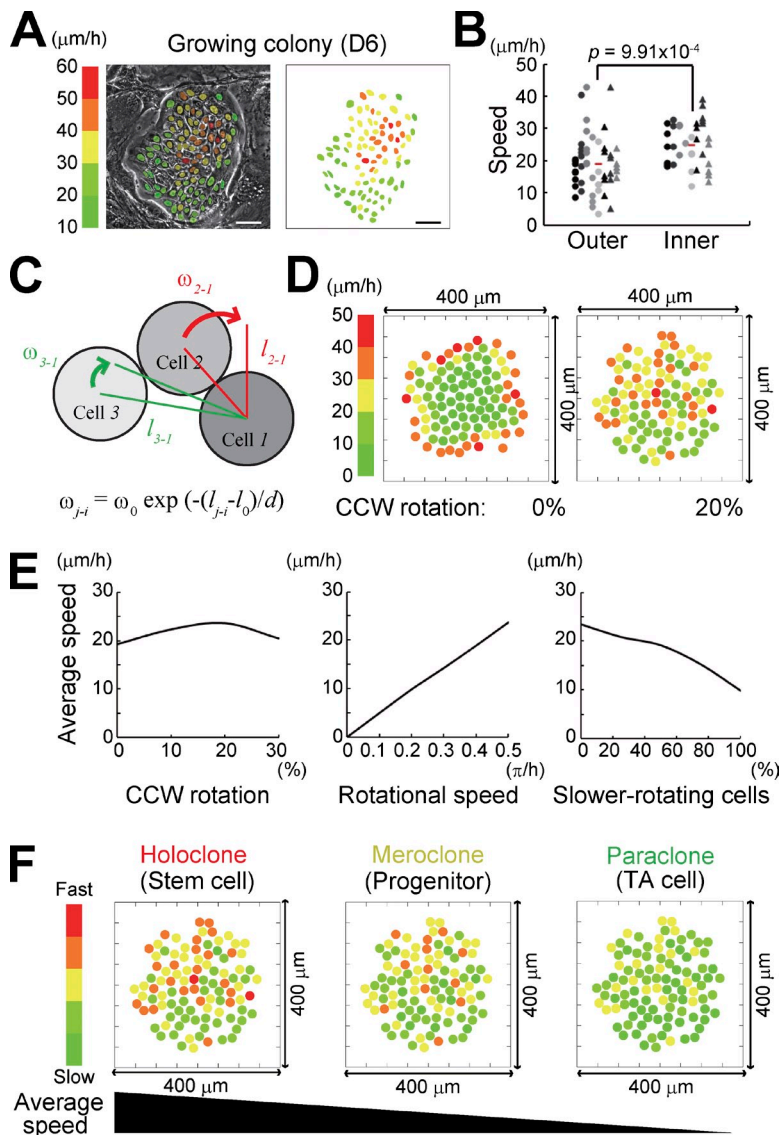
ATP-binding cassette subfamily G member 2, Delta1, melanoma chondroitin sulfate proteoglycan, and leucine-rich repeats and immunoglobulin-like domains protein 1 (Lrig1) can also be used to identify human keratinocyte stem cells (Jones and Watt, 1993; Jones et al., 1995; Li et al., 1998; Lowell et al., 2000; Legg et al., 2003; Terunuma et al., 2003; Jensen and Watt, 2006; Schlüter et al., 2011). However, none of these cell surface proteins is stem cell specific, and the number of clonogenic keratinocytes in populations enriched by cell sorting based on these cell surface markers is always smaller than that of stem cells simply selected based on size with a Pasteur pipet (up to 28%; Barrandon and Green, 1985). This does not exclude the existence of reliable cell surface markers for human keratinocyte stem cells, but indicates that the cell-sorting procedure might negatively impact the stem cells (discussed in Claudinot et al. [2005] and Barrandon et al. [2012]). Thus, selective cultivation of human keratinocyte stem cells has never been established.

Here, we dissect the motion dynamics of cultured human epidermal keratinocyte stem cells by a combination of motion analysis and physics of multiparticle systems and demonstrate that a keratinocyte stem cell colony can be identified by the analysis of cell motion, an emergent property of the stem cells.

## Results

### Rotational speed of keratinocytes in the two-cell colony stage is associated with their proliferative capacity

Normal human epidermal keratinocytes formed two-cell colonies by a single cell division of individual cells, which were observed at day 1 after seeding. It has been reported that the number of rotating two-cell colonies of normal human keratinocytes decreases along with passages (Hata et al., 2005); however, the association between the rotational speed and clonal growth remains unknown. We first examined whether the rotational speed of two-cell colonies is associated with proliferative potential in normal human epidermal keratinocytes. Rotational motion of two-cell colonies of keratinocytes was clearly observed 1 d after cells were seeded on one fourth of the normal number of feeder cells (Fig. 1 A and Videos 1 and 2). The rotational speed of each two-cell colony was measured by time-lapse observation. After addition of feeder cells, the colony was further cultivated for 5 d. Each keratinocyte colony was traced, and the number of cells in the colonies was counted (Fig. 1 A). This analysis revealed that rotational speed of two-cell colonies of normal human keratinocytes positively correlated with proliferative capacity (Fig. 1 B and Fig. S1 A). The level of



**Figure 2. In silico reconstitution of keratinocyte stem cell colony dynamics.** (A) Distribution of locomotion speed of keratinocytes in a progressively growing colony after 6 d of cultivation. Each color indicates different locomotion speeds that were calculated with 3-h time-lapse observation. (B) Locomotion speed of cells located at the inner and outer portion of progressively growing colonies. Each dot represents the speed of each keratinocyte in the colony. Dots arranged vertically indicate the speed of cells in the same colony. Mean speed of each cell fraction is shown with red bars. Locomotion speed was calculated with 30-min time-lapse observation. 51 outer cells and 35 inner cells in seven progressive growing colonies were analyzed. P-values were calculated by Student's *t* test. (C) Two-dimensional modeling of interaction of rotating keratinocytes. Cells were provided with  $24 \mu\text{m}$  ( $=l_0$ ) of a planar diameter and can rotate around the contacting cells at  $0.5 \pi/\text{h}$  ( $=\omega_0$ ). The rotational speed of cell *j* against cell *i*,  $\omega_{ji}$ , was defined as  $\omega_{ji} = \omega_0 \exp(-(l_{ji} - l_0)/d)$ .  $l_{ji}$  is the distance between the centers of cell *i* and cell *j*, and  $d = l_0/2$  is a constant.  $i, j = 1, 2, 3, \dots, 100$  and  $i \neq j$ . The input parameters used are described in the Results section. (D) Distribution of locomotion speed of keratinocytes in a progressively growing colony in silico. The speed of each cell was calculated by a simulation experiment based on our modeling (See Materials and methods). (left) All cells constituting the colony rotate clockwise. (right) 20% of cells in the colony rotate CCW. Each color indicates different locomotion speeds. The data shown were obtained from a single representative experiment using a random number generator with three random seeds (triplicate experiments). (E, left) The colony containing 20% of CCW cells showed the highest mean speed of locomotion even if all cells had the same rotational speed ( $0.5 \pi/\text{h}$ ). (middle) Rotation speed of cells determined cell locomotion speed in the colony. The percentage of CCW rotating cells was fixed at 20%. (right) Variation of locomotion speed of cells was reproduced with a mixture of fast ( $0.5 \pi/\text{h}$ ) and slow ( $0.2 \pi/\text{h}$ ) rotating cells. The percentage of CCW rotating cells was fixed at 20%. The data shown were obtained from a single representative experiment using a random number generator with three random seeds (triplicate experiments). (F) Schematic representation of cell locomotion speed in each clonal type. The simulation predicted that a holoclone colony could be identified by measuring cell locomotion speed.

involucrin (IVL) expression is also related to proliferative capacity of keratinocytes (Watt and Green, 1981; Barrandon and Green, 1985). We further found that faster rotating two-cell colonies did not express IVL, whereas the colonies expressing IVL in one or both keratinocytes rarely rotated (Fig. 1, C and D). These data indicate that the keratinocytes with the ability to rotate around the neighbor in the two-cell colony stage also had the ability to proliferate and make a large colony by clonal growth.

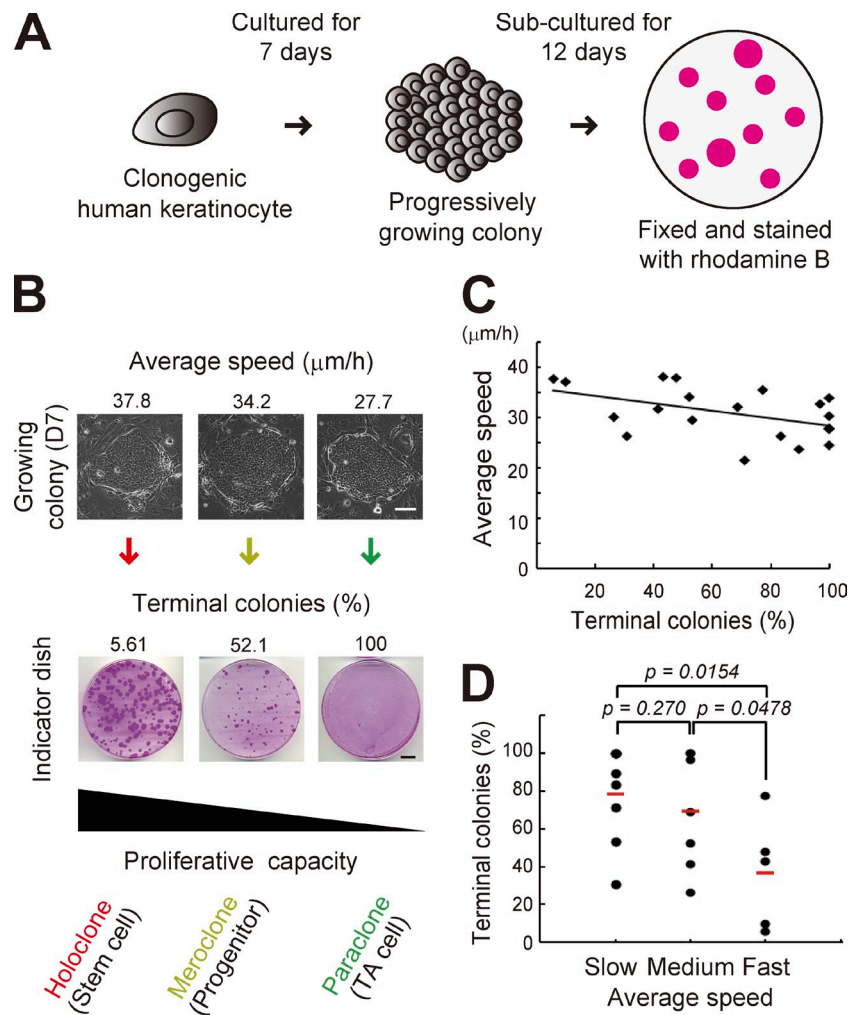
We also investigated the motion of keratinocytes grown under conditions that were serum free and did not require feeder layers for keratinocyte growth. In these conditions, individual keratinocytes seeded at clonal density divided normally, but generated two daughter cells that immediately detached from each other and did not make two-cell colonies (Fig. S1 B). Therefore, the correlation between rotational speed in the two-cell colonies of keratinocytes and their clonal growth could not be examined. In high density inoculation, however, keratinocytes formed two-cell colonies and some of them exhibited a rotational motion (Videos 3–5), as reported previously (Hata et al., 2005). This indicates that keratinocytes rotate around the

neighboring cells when two cells are in contact with each other, even if maintained in serum-free media.

### Rotational motion gives rise to collective dynamics, which predicts epidermal stemness

Clonogenic keratinocytes form progressively growing colonies (Barrandon and Green, 1987a,b; Nanba et al., 2013b) that contain more than a hundred cells with differing proliferative capacities (Barrandon and Green, 1987b). In progressive growing colonies, individual keratinocytes spontaneously moved with different locomotion speeds (Fig. 2 A; Fig. S2, A and B; and Video 3); cells located at the inner portion of the colony moved faster than those at the outer portion (Fig. 2 B). We next performed a simulation experiment to analyze whether the collective motion observed in the growing colony could emerge if a hundred cells with a rotational motion accumulated as a colony. In this simulation, all cells were provided with  $20 \mu\text{m}$  of a planer body with  $4 \mu\text{m}$  of variable extension. Hence, the equilibrium distance between the centers of contacting cells

**Figure 3. Keratinocyte stem cell colonies can be identified by measuring cell locomotion speed.** (A) Clonal analysis of human clonogenic keratinocytes (Barrandon and Green, 1987b). A progressive growing colony derived from a single keratinocyte is subcultured into a 10-cm cell culture dish (indicator dish) so its growing capacity can be evaluated. (B, top) Progressive growing colonies showed variations in the mean cell locomotion speed in the colony after 7 d of cultivation. The mean cell locomotion speed in the colony was obtained by measuring locomotion speed of randomly selected 15–20 cells in each colony. Bar, 100  $\mu\text{m}$ . (bottom) Each growing colony in the top panel was trypsinized and passaged into an indicator dish arranged in the same column. The culture was maintained for 12 d, and then fixed and stained with rhodamine B. Proliferative capacity of growing colonies was assessed by determining the ratio of terminal colonies in the indicator dish. Bars, 10 mm. (C) Correlation of mean speed of cells in each colony and its proliferative capacity (Pearson's  $r = -0.477$ ,  $P = 0.0335$ , and  $n = 20$  colonies). (D) Growing colonies were categorized in three groups depending on the mean speed of cells: slow ( $\leq 30 \mu\text{m/h}$ ), medium ( $>30 \mu\text{m/h}$  and  $\leq 35 \mu\text{m/h}$ ), and fast ( $>35 \mu\text{m/h}$ ). P-values were calculated by Student's  $t$  test.



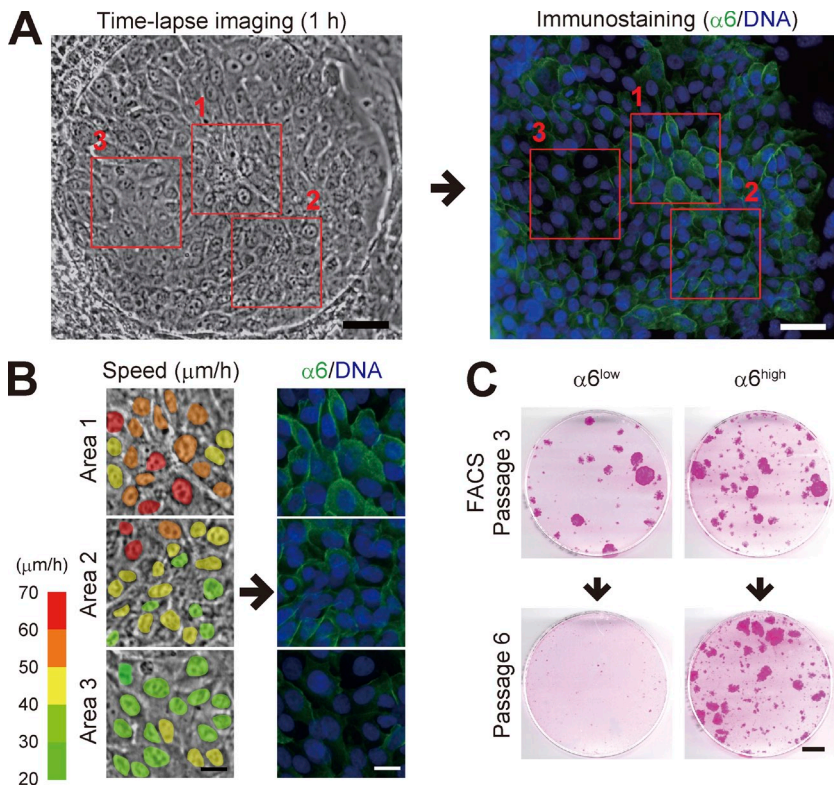
was assumed as  $l_0 = 24 \mu\text{m}$ . As two-cell colonies of proliferative keratinocytes rotated at  $>0.5 \pi/\text{h}$  (Fig. 1 B and Fig. S1 A), all cells were provided with the rotational speed  $\omega_0 = 0.5 \pi/\text{h}$ , which means that cells can rotate  $0.5 \pi$  around the neighboring cells in 1 h when cells are in contact with each other. In this condition, each one of the two cells rotates around the center of two cells at  $\pi$  per hour. We also set an interactive effect of rotation depending on the distance between cells when the number of cells increased as follows. The rotational speed of cell  $j$  against cell  $i$ ,  $\omega_{j-i}$ , was defined as  $\omega_{j-i} = \omega_0 \exp(-(l_{j-i} - l_0)/d)$  (Fig. 2 C). Here,  $l_{j-i}$  is the distance between the centers of cell  $i$  and cell  $j$  and  $d = l_0/2$  is a constant that is fixed by comparing the numerical results with observations in culture (Fig. 2, A and B). 99 cells can directly or indirectly interact with and rotate around a cell  $i$  ( $i \neq j$ ;  $i, j = 1, 2, 3, \dots, 100$ ). We made this procedure to all cells;  $n = 100$  in a colony. The positions of all the cells were provided and the locomotion speed of individual cells was calculated.

First, when all 100 cells rotated clockwise in the colony in silico, locomotion speed of cells had a gradient along the inner to outer axis of the colony (Fig. 2 D). However, appearance of counterclockwise (CCW) rotating cells generated motion dynamics in the cells located at the inner portion of the colony, and distribution of locomotion speed was almost identical to

that of a progressively growing colony in culture (Fig. 2, A, B, and D). The colonies containing 20% of CCW rotating cells showed the maximum mean speed of cell locomotion (Fig. 2 E). Locomotion speed of cells in the colony was completely dependent on rotational speed of cells (Fig. 2 E). Various mixtures of fast ( $0.5 \pi/\text{h}$ ) and slow ( $0.2 \pi/\text{h}$ ) rotating cells in the colony gave rise to variations in the mean locomotion speed of cells in the colony (Fig. 2 E). This scenario revealed the possibility of predicting a keratinocyte stem cell colony by measuring cell locomotion speed, if rotational speed of keratinocytes was indeed associated with their proliferative capacity (Fig. 2 F).

#### Keratinocyte stem cell colonies can be identified by measuring cell locomotion speed

To validate this prediction, we measured cell locomotion speed in each growing colony by time-lapse observation in 7 d of culture, and then assessed proliferative capacity by clonal analysis (Barrandon and Green, 1987b; Fig. 3, A and B). The mean speed of cell locomotion in the colony at day 7 was  $\sim 25\text{--}40 \mu\text{m/h}$  (Fig. 3, B and C), but that in the colony at day 6 and in silico prediction was  $\sim 15\text{--}25 \mu\text{m/h}$  (Fig. 2, B and D), which might be accounted for by the increase of the number of cells. This combination analysis revealed that the ratio of terminal colonies after passages negatively correlated with the mean speed



**Figure 4. Expression of  $\alpha 6$  integrin is associated with both locomotive and proliferative capacities.** (A) Serial images of a progressive growing colony were collected for 60 min, and then the colony was immediately fixed and stained with an antibody against  $\alpha 6$  integrin (17D11). Bars, 50  $\mu\text{m}$ . (B) Magnification of the area outlined by the red boxes in A. The colors in the left column indicate the locomotion speed ( $\mu\text{m}/\text{h}$ ) of each cell in the colony. Bars, 20  $\mu\text{m}$ . (C) Colony-forming efficiency of  $\alpha 6^{\text{high}}$  and  $\alpha 6^{\text{low}}$  keratinocyte population after serial cultivation. For more detail, see Fig. S3 F. Bar, 10 mm.

of keratinocyte locomotion in the colony before passages. It also showed that colonies consisting of higher locomotive cells contained keratinocytes with higher growth potential (Fig. 3, C and D), as predicted. Analysis of experiments done in the same day showed stronger correlation between mean speed and ratio of terminal colonies (Fig. S2 C), probably because of the same passage numbers and culture conditions of keratinocytes and 3T3 feeder cells in the experiment. This result indicates that a keratinocyte colony retaining the greatest growth capacity, and which was derived from a holoclone, showed the highest locomotive phenotype among progressively growing colonies of keratinocytes. Simulation experiments revealed that rotational motion of keratinocytes generated collective motion of cells and that rotational speed was correlated with the mean speed of cell locomotion in the colony (Fig. 2). Therefore, the result of this combination analysis confirmed that the rotational speed of keratinocytes was correlated with their proliferative capacity, as shown in Fig. 1, and also strongly suggests that keratinocytes with the highest rotational speed in a culture were keratinocyte stem cells.

#### The expression level of $\alpha 6$ integrin is associated with locomotion speed and proliferative capacity

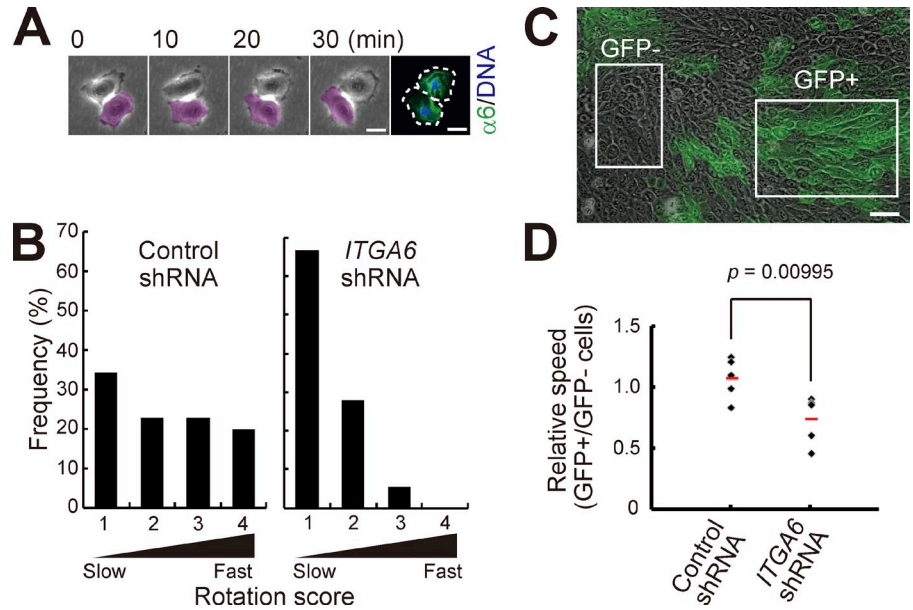
In a progressively growing colony, a variation in integrin  $\alpha 6$  subunit expression in individual keratinocytes was observed (Fig. 4 A); keratinocytes with higher  $\alpha 6$  integrin expression moved faster than those with lower expression (Fig. 4 B). The level of  $\alpha 6$  integrin expression in human keratinocytes is correlated with their proliferative capacity (Li et al., 1998) and clonal types (Fortunel et al., 2010). We next fractionated

keratinocytes in progressively growing colonies into  $\alpha 6$  integrin high- and low-expressing populations ( $\alpha 6^{\text{high}}$  and  $\alpha 6^{\text{low}}$ ). The culture of keratinocytes on a feeder layer of 3T3 cells also contains terminal colonies that have an irregular shape and is mostly composed of large and flattened basal cells (Nanba et al., 2013b). Cellular fractions mainly containing keratinocytes derived from such colonies were identified and discriminated from keratinocytes comprising growing colonies by IVL expression and flow cytometric signatures of each subfraction (Fig. S3). We then found that  $\alpha 6^{\text{high}}$  but not  $\alpha 6^{\text{low}}$  keratinocytes in the progressively growing colony maintained proliferative capacity through serial cultivation (Fig. 4 C). Flow cytometric analysis also revealed that  $\alpha 6^{\text{high}}$  keratinocyte population contained the smallest cells (Fig. S3 D), which possess higher clonogenic ability (Barrandon and Green, 1985). Collectively, these data indicate that keratinocytes with higher expression of  $\alpha 6$  integrin in growing colonies possessed both higher locomotive and proliferative capacities.

#### $\alpha 6$ integrin is required for rotational and collective motion

$\alpha 6$  integrin was also expressed in rotating two-cell colonies of normal human epidermal keratinocytes (Fig. 5 A). We next examined whether  $\alpha 6$  integrin is involved in the rotational motion of two-cell colonies of keratinocytes by using a doxycycline-inducible  $\alpha 6$  integrin gene (*ITGA6*)-specific knockdown system (Matsushita et al., 2013; Nanba et al., 2013b). shRNA-expressing cells were easily traced as GFP-positive (GFP+) cells, and a lentivirus carrying shRNA targeted to *ITGA6* efficiently decreased  $\alpha 6$  expression in human epidermal keratinocytes (Fig. S4, A–D). Rotational speed was significantly decreased

**Figure 5.  $\alpha 6$  integrin is required for rotational and collective motion.** (A) Rotational motion of a two-cell colony of human epidermal keratinocytes and distribution of  $\alpha 6$  integrin. Serial images of a two-cell stage colony were collected for 60 min, and then the colony was immediately fixed and stained with an antibody against  $\alpha 6$  integrin (17D11). Bars, 20  $\mu$ m. (B) Distribution of rotational speed of two-cell colonies of keratinocytes transfected with control and *ITGA6* shRNA. Rotation score is described in Fig. 1. The data shown ( $n = 35$  and 36 colonies of control shRNA and *ITGA6* shRNA-transfected keratinocytes, respectively) were obtained from triplicate experiments. (C) Mixture of *ITGA6* shRNA-transduced and nontransduced keratinocytes in a large progressively growing colony. Bar, 50  $\mu$ m. (D) Effect of  $\alpha 6$  integrin knockdown on keratinocyte locomotion in the colony. The locomotion speed of cells was measured after transduction of control and *ITGA6* shRNA. shRNA-transduced cells were identified as GFP-positive (GFP+) cells. The values were obtained from analyzing five colonies in each condition. P-values were calculated by Student's *t* test.



in *ITGA6*, but not control shRNA-transduced two-cell colonies (Fig. 5 B). We further found that locomotion speed of GFP+ cell populations in progressive growing colonies was significantly slower than that of GFP-negative (GFP-) cell populations in colonies infected with a lentivirus carrying shRNA targeted to *ITGA6*, but not the control shRNA (Fig. 5, C and D). These results indicate that  $\alpha 6$  integrin was required for rotational and collective motion of human keratinocytes. Altogether, we revealed that keratinocytes expressing higher amounts of  $\alpha 6$  integrin, which is required for rotational motion of keratinocytes, also possessed higher proliferative capacity, which corroborates that the rotational speed of keratinocytes was correlated with their proliferative capacity, as shown in Fig. 1.

#### $\alpha 6\beta 4$ integrin is required for collective motion

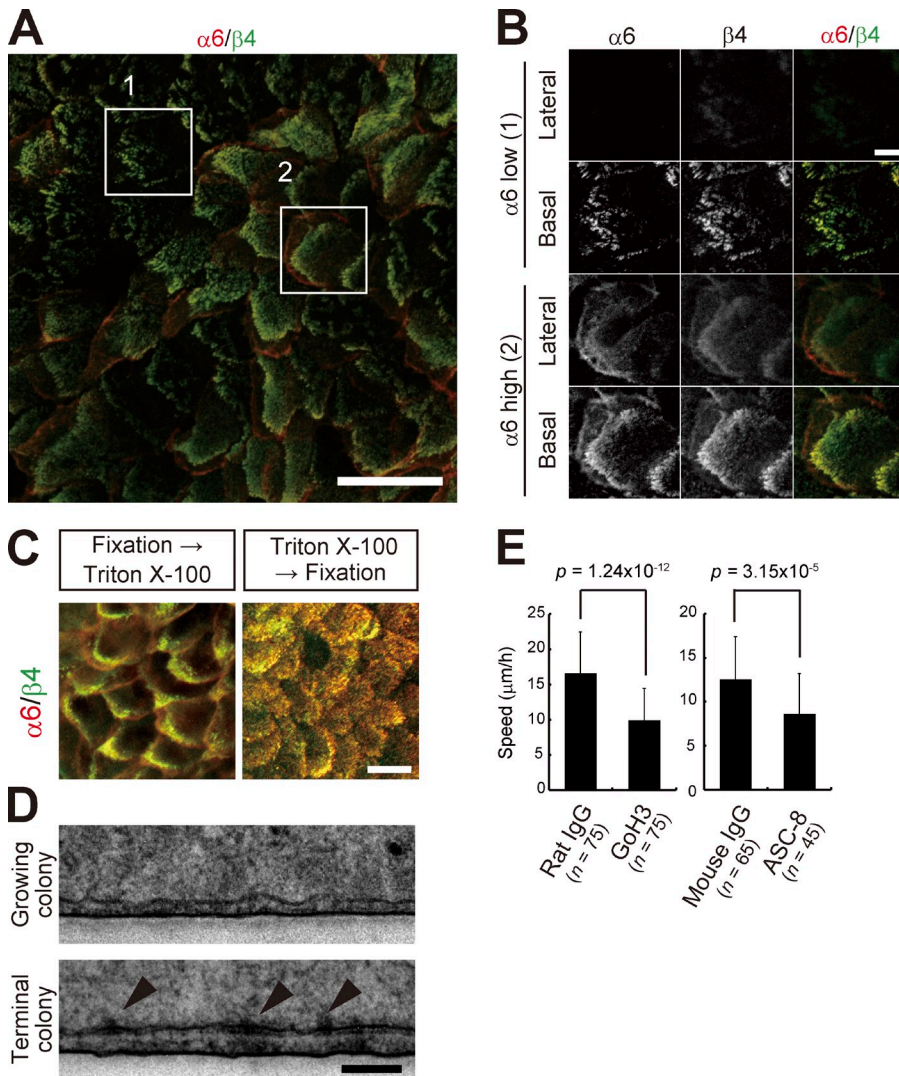
$\alpha 6$  integrin forms a heterodimer with  $\beta 4$  subunit and functions as a surface receptor for laminin-332 (Margadant et al., 2008). We confirmed the polarized expression of  $\alpha 6\beta 4$  integrin (Marchisio et al., 1991) at the basal surface of keratinocytes (Fig. 6, A and B).  $\alpha 6\beta 4$  integrin can be linked with cytokeratins via cytoplasmic proteins, and cytoskeleton-linked  $\alpha 6\beta 4$  integrin is detergent insoluble and can be detected even if cells are treated with detergent before fixation (Rabinovitz et al., 1999). In cultured human epidermal keratinocytes,  $\alpha 6\beta 4$  integrin was also detectable when treated with 0.5% Triton X-100 before fixation (Fig. 6 C). Basal, but not lateral, distribution of  $\alpha 6\beta 4$  integrin was more evident by Triton X-100 pretreatment (Fig. 6 C). However, electron microscopy demonstrated that hemidesmosomes, which appear as electron-dense cytoplasmic plaques at the basal surface of cells, were only detected in the terminal colony but hardly observed in the progressively growing colony (Fig. 6 D). We further examined whether  $\alpha 6\beta 4$  integrin is involved in keratinocyte locomotion. Because of the limited access of inhibitory antibodies to the basal surface of cells in the colony, we investigated keratinocyte movements in two-dimensional cell aggregates, which were formed after high

density keratinocyte inoculation (Fig. S5 and Materials and methods). Locomotion speed of keratinocytes incubated with anti- $\alpha 6$  (GoH3) and - $\beta 4$  integrin (ASC-8) antibodies in two-dimensional aggregates significantly decreased, whereas it was not affected by normal rat and mouse IgG (Fig. 6 E). These data indicate that  $\alpha 6\beta 4$  integrin was not organized into anchoring complexes of hemidesmosomes in growing colonies, but was associated with cytokeratins and involved in collective motion of keratinocytes by mediating functional adhesion to extracellular substrates in the progressively growing colony.

## Discussion

The proliferative capacity of human epidermal keratinocyte stem cells has been well studied. In contrast, their locomotive capacity has not been well investigated because stem cells are assumed to be anchored in their niche. Our present work has four major findings concerning the motion of human keratinocyte stem cells. First, keratinocytes with higher proliferative capacity show a rotational motion in two-cell stage colonies. Second, the rotational motion of keratinocyte stem cells triggers collective motion of the cells within the colony. Third, collective motion analysis identifies keratinocyte stem cell colonies. Fourth,  $\alpha 6$  integrin is involved in rotational and collective motion of keratinocytes.

The mechanism of rotational motion of the two-cell colony of keratinocytes and how it is associated with growth capacity is still unclear. We have previously reported that single keratinocytes can create helical tunnels in fibrin matrix (Ronfard and Barrandon, 2001), which might be related with the rotational motion in two-dimensional culture. Mammary epithelial cells also exhibit rotational motion (Kino-oka et al., 2004), which is required for sphere formation in three-dimensional culture (Tanner et al., 2012). In mammalian epidermis, keratinocyte stem cells are located in the basal layer of the interfollicular epidermis and epidermal appendages (Rochat et al., 1994; Jones



**Figure 6.  $\alpha 6\beta 4$  integrin is involved in collective motion.** (A) A maximum intensity projection image of immunofluorescence against  $\alpha 6$  and  $\beta 4$  integrin in a growing colony by confocal microscopy. Bar, 50  $\mu\text{m}$ . (B) Magnification of the area outlined by the white boxes in A. Optical sections show  $\alpha 6\beta 4$  integrin on basal and lateral surfaces. Bar, 10  $\mu\text{m}$ . (C) Detergent-insoluble  $\alpha 6\beta 4$  integrin on basal surface.  $\alpha 6\beta 4$  integrin can be linked with cytoplasmic proteins, and cytoskeleton-linked  $\alpha 6\beta 4$  integrin is detergent insoluble and can be detected even if cells are treated with detergent before fixation (Rabinovitz et al., 1999). In keratinocytes,  $\alpha 6\beta 4$  integrin was also detectable when treated with 0.5% Triton X-100 before fixation. Bar, 20  $\mu\text{m}$ . (D) Electron micrographs of the growing and terminal colonies of human epidermal keratinocytes. Arrowheads indicate well-defined electron-dense structures of hemidesmosomes in the basal surface. Bar, 500 nm. (E) Effect of inhibitory antibodies against  $\alpha 6$  (GoH3) and  $\beta 4$  integrin (ASC-8) on keratinocyte locomotion in keratinocyte aggregates. Two-dimensional keratinocyte aggregates were formed after high density keratinocyte inoculation with antibodies. P-values were calculated by Student's *t* test.

et al., 2007; Blanpain and Fuchs, 2009). Lineage tracing experiments have clearly demonstrated the clonal growth of single keratinocyte stem/progenitor cells in the interfollicular epidermis (Clayton et al., 2007; Mascré et al., 2012), but the motion of keratinocyte stem/progenitor cells during homeostasis is still unknown. Importantly, after wounding, keratinocyte stem cells mainly contribute to reepithelialization and long-term regeneration of the epidermis, whereas progenitor cells make a limited contribution (Mascré et al., 2012). Keratinocyte stem cells located in the bulge region of hair follicles also participate in the regeneration of interfollicular epidermis after wounding (Taylor et al., 2000; Oshima et al., 2001; Claudinot et al., 2005; Ito et al., 2005). These studies have suggested that the locomotive capacity of keratinocyte stem cells is higher than that of progenitor cells, resulting in a substantial contribution to epidermal wound healing. This notion has been proven, in part, by our study with cultured human keratinocytes. We have demonstrated here that cultured keratinocyte stem cells lost hemidesmosomal structures, even though they highly expressed  $\alpha 6\beta 4$  integrin. This phenotype is also observed in keratinocytes at the leading edge of migrating epidermis after wounding (Krawczyk

and Wilgram, 1973; Cavani et al., 1993). Although directed migration is indispensable for wound closure, collective motion generated by keratinocyte stem cells might also be involved in epidermal wound healing.

Image-based identification of cultured stem cells and evaluation of their potency are required for quality assurance of stem cell culture in regenerative medicine (Ker et al., 2011) and also for high-throughput screening in stem cell research (Erdmann et al., 2012). Recent studies have established noninvasive and morphology-based evaluation methods to identify mesenchymal stem/progenitor cell potency (Kino-oka et al., 2009; Seiler et al., 2012; Matsuoka et al., 2013). Maintenance and self-renewal of keratinocyte stem cells in culture are definitely associated with successful transplantation for epidermal regeneration. For regenerative medicine, the determination of number of holoclones in a keratinocyte culture is the best criteria to assess quality (Rama et al., 2010; Barrandon et al., 2012; Rochat et al., 2012; Pellegrini et al., 2013). However, a holoclone assay takes 19 d to perform (Barrandon and Green, 1987b; Barrandon et al., 2012), and that has limited its usefulness for regenerative medicine applications. Image-based

noninvasive identification of cultured human keratinocyte stem cells enables us to monitor and validate their successful cultivation in situ, which is essential for engraftment of transplanted cells and the long-term maintenance of the regenerated epidermis and cornea epithelium in the patients (Gallico et al., 1984; Pellegrini et al., 1997, 1999; Ronfard et al., 2000; Rama et al., 2001; Rama et al., 2010). This technology is also available for selection of normal and genetically modified keratinocyte stem cells in cultured keratinocytes derived from the patient's skin (Mavilio et al., 2006) or differentiated from embryonic stem cells and patient-specific induced pluripotent stem cells for therapy (Green et al., 2003; Metallo et al., 2008; Guenou et al., 2009; Itoh et al., 2011).

Our findings are the basis of a noninvasive method that relies on the analysis of cell motion to estimate the growth capacity of keratinocytes in culture and monitor and validate the quality of these cells for transplantation. In practice, the combination of time-lapse observation of keratinocyte cultures and an image processing technology that can recognize and trace individual cells within the densely packed colonies can achieve in situ identification of keratinocyte stem cells through the automatic measurement of cell locomotion speed. This enables us to monitor whether the culture contains enough keratinocyte stem cells with higher locomotive capacity and eliminate the cultures that are not suitable for transplantation before making confluent keratinocyte sheets. Selective cultivation of keratinocyte stem cells can also be achieved in combination with automated aspiration of stem cell colonies from the feeder cell layer (Schneider et al., 2008). Advances in our simulation based on physics of multiparticle systems, by including the cell division and the growth of a colony, will also contribute to profound understanding of collective dynamics of keratinocyte stem cells during keratinocyte sheet formation. Although further investigations and technological developments are still required, phase-contrast time-lapse imaging with an image processing algorithm will definitely improve the clinical outcome of cell therapy and the efficiency of cell manufacturing for regenerative medicine.

## Materials and methods

### Cell culture

Normal human epidermal keratinocytes were isolated from neonatal skin. Frozen keratinocytes were thawed and cultivated at clonal density on a feeder layer of irradiated or mitomycin C-treated 3T3-J2 cells, at 37°C and 10% CO<sub>2</sub> in a 3:1 mixture of the DMEM and Ham's F12 medium supplemented with 10% FCS, 5 µg/ml insulin, 0.4 µg/ml hydrocortisone, 10<sup>-10</sup> M cholera toxin, and 2 × 10<sup>-9</sup> M triiodothyronine, as described previously (Rheinwald and Green, 1975; RoCHAT et al., 1994). Human epidermal keratinocytes were also cultivated with CnT-PR medium (CELLN-TEC), Epilife medium containing supplement S7 (Life Technologies), and MCDB153 medium containing bovine pituitary extract (Hashimoto et al., 1994). Keratinocytes were used between passages 2 and 7. The medium was changed every 4 d. Cultures were fixed with 3.7% buffered formaldehyde and stained with 1% rhodamine B, and keratinocyte colonies were counted under a binocular microscope (SMZ645; Nikon). Clonal analysis was performed as described previously (Barrandon and Green, 1987b). In brief, human keratinocytes were cultivated at clonal density on a feeder layer of irradiated or mitomycin C-treated 3T3-J2 cells. Well-isolated colonies were then individually trypsinized in a cloning ring and subcultured into a 10-cm cell culture dish so clonal types could be evaluated.

### Time-lapse imaging and image processing

Human epidermal keratinocytes were seeded at clonal density in a 35-mm cell culture dish (Corning) with irradiated or mitomycin C-treated 3T3-J2 cells and grown for 6 or 7 d without EGF. For time-lapse imaging, cells were maintained at 37°C and 10% CO<sub>2</sub> in a chamber mounted on a microscope (Axiovert 200M; Carl Zeiss). Images were obtained at 5-min intervals, for 30, 60, and 180 min, depending on experimental conditions, with a monochrome camera (AxioCamHR3; Carl Zeiss) using Enhanced Contrast Plan Neofluar 5x/0.16 and 10x/0.30 and LD A-Plan 20x/0.30 objective lenses. Time-lapse images were acquired with AxioVision (Carl Zeiss) and analyzed with MetaMorph (Molecular Devices) or Volocity (PerkinElmer) on the graphic tablet (Wacom). The angle of contact surface between cells in a two-cell colony was given by the top right angle of contact surface against the perpendicular axis. The rotational speed of a two-cell colony was assessed as the amount of change in the angle of the colony.

### Immunofluorescence microscopy

Keratinocytes were seeded at clonal density in a 35-mm cell culture dish with irradiated or mitomycin C-treated 3T3-J2 cells and grown for 6 d. The cells were fixed in 4% PFA in PBS at 4°C for 10 min, and subsequently treated with 0.5% Triton X-100 in PBS for 10 min. In the detergent-insoluble experiment, the cells were treated with 0.5% Triton X-100 in PBS for 10 min before fixation. After the treatment with 1% BSA, the cells were incubated with primary antibodies for 1 h at RT or overnight at 4°C, washed in PBS, and subsequently incubated with FITC- and Cy3-conjugated secondary antibodies (Jackson ImmunoResearch Laboratories, Inc.) for 1 h at RT. After a wash with PBS, cells were incubated with Hoechst 33258 (Molecular Probes), mounted with a fluorescent mounting medium (Dako), and examined with a microscope (Axiovert 200M; Carl Zeiss) with a Plan Apochromat 20x/0.8 objective lens (Carl Zeiss). Confocal imaging was performed with an A1 confocal microscope (Nikon) with Plan Apochromat 20x/0.75 and 40x/0.95 lenses (Nikon), and images were obtained and analyzed with NIS-Elements (Nikon). Primary antibodies used for immunofluorescence microscopy were as follows: a mouse monoclonal antibody against α6 integrin (clone 17D11; gift from Y. Hirako, Nagoya University, Nagoya, Japan), a rat monoclonal antibody against α6 integrin (clone GoH3; BD), a mouse monoclonal antibody against β4 integrin (clone 3E1; EMD Millipore), and a mouse monoclonal antibody against IVL (clone SY5; Abcam). The mouse monoclonal antibody against α6 integrin (clone 17D11) was produced by using the extracellular domain of bovine α6 integrin as the antigen.

### Flow cytometry and cell sorting

Trypsinized and resuspended keratinocytes were incubated with a FITC-conjugated rat monoclonal antibody against α6 integrin (GoH3; BD) for 1 h on ice. After three washes with HBSS (+), the cells were resuspended in culture medium, sorted using the FACSAria cell sorter (BD), and collected into culture medium. For IVL experiments, trypsinized and resuspended keratinocytes were incubated with mouse monoclonal antibody against IVL (SY5; Abcam) for 1 h on ice. Keratinocytes were then incubated with phycoerythrin-conjugated goat polyclonal antibody against mouse IgG (Santa Cruz Biotechnology, Inc.) for 1 h on ice. After three washes with HBSS (+), the cells were then resuspended in HBSS (+) and analyzed by using the FACScan flow cytometer (BD).

### Plasmid construction and preparation of lentivirus vectors

A doxycyclin-inducible gene-specific knockdown system using a lentivirus was described previously (Matsushita et al., 2013; Nanba et al., 2013b). The HIV-based self-inactivating lentiviral expression vector plasmid CS-CA-MCS was provided by the Institute of Physical and Chemical Research BioResource Center, Japan. Three plasmids, pTet-On-Advanced vector, pTRE-Tight vector (Takara Bio Inc.), and pcDNA 6.2-GW/EmGFP-miR vector (Invitrogen), were obtained, and their components were used to construct a transgene cassette consisting of two expression units for inducible gene knockdown. The cDNA fragment of reverse Tet-controlled transactivator was recovered from the pTet-On-Advanced vector and ligated into the pRES vector (Takara Bio Inc.), upstream of the internal ribosome entry site (IRES) sequence. The blasticidin-resistance gene (Bsd) was ligated into this plasmid, downstream of the IRES sequence, resulting in the generation of prTA-IRES-Bsd, containing one transgene unit. In contrast, the Dral-Pvull fragment of the pcDNA 6.2-GW/EmGFP-miR vector containing EmGFP cDNA and pre-miRNA sequence was recovered and inserted into the pTRE-Tight vector, downstream of the Tet-responsive promoter. This resulted in the vector pTRE-EmGFP-miR, which contained another transgene unit. Finally, the fragment of the rTA-IRES-Bsd was inserted into the lentivirus expression vector plasmid CS-CA-MCS, directly



downstream of the CAG promoter sequence, and then another unit, the TRE-EmGFP-miR fragment, was inserted into the resulting plasmid between the Bsd and WPRE sequence. The TRE-EmGFP-miR unit was arranged in the opposite direction as the CAG-driven rTA-IRES-Bsd unit, yielding a new single lentivirus expression plasmid for inducible gene silencing, CS-CA-rTA-IRBsd-TRE-EmGFP-miR (Fig. S4 A). To construct the lentivirus vector for inducible silencing of the human integrin  $\alpha 6$  (*ITGA6*) gene expression, two synthetic oligonucleotides designed by BLOCK-iT miR RNAi technologies were obtained (Life Technologies). The sequences were 5'-TGCTGTAAGTGTCTGGAAACGTTGCGTTTTGGCCACTGACTGACGCAACGTTTCAGACACTTTA-3' for Hmi408869\_top\_ITGA6 and 5'-CCTGTAAGTGTCTGAACGTTGCGTCAGTCAGTGGCCAAAACGCAACGTTTCCAGACACTTTAC-3' for Hmi408869\_bot\_ITGA6. The double-stranded DNA was inserted between the 5'-miR and 3'-miR flanking sequences of the vector plasmid. The shRNA-negative control sequence presented by Life Technologies was used to construct a negative control vector. The sequences used as negative controls were 5'-TGCTGAAATGACTGCGCGTGGAGACGTTTTGGCCACTGACTGACGCTCCACGCAGTACATT-3' for the top strand and 5'-CCTGAAATGACTGCGTGGAGACGTCAGTCAGTGGCCAAAACGTTCCACGCGCAGTACATTC-3' for the bottom strand. Using these *ITGA6*-inducible knockdown plasmids, lentiviral particles were prepared by standard transfection procedures and used to introduce the transgene into  $2 \times 10^5$  cells. After transduction of the transgenes at a multiplicity of infection of 1 as previously described (Nanba et al., 2013a), the cells were treated with 100 nM doxycycline to induce silencing of the *ITGA6* gene and subsequently analyzed.

### Electron microscopy

A keratinocyte culture containing growing and terminal colonies was fixed in 0.1 M cacodylate buffer, pH 7.3, containing 2.5% glutaraldehyde and 2% PFA, and was then immersed in 1% osmium tetroxide in the same buffer. Dehydration in a gradient series of ethanol was followed by embedding in PolyBed 812 (Polysciences). Ultrathin sections were cut on a Reichert ultramicrotome (Leica), stained with uranyl acetate and lead citrate, and observed with an electron microscope (1200EX; JEOL).

### Two-dimensional keratinocyte aggregation assay

Resuspended keratinocytes were incubated with 20  $\mu\text{g}/\text{ml}$  of an inhibitory antibody against  $\alpha 6$  (clone GoH3; BD) or  $\beta 4$  integrin (clone ASC-8; EMD Millipore) for 1 h on ice. Cells were then washed with HBSS (+) (Invitrogen) twice, and  $5.0 \times 10^4$  cells were seeded into a 35-mm cell culture dish (Corning) on irradiated or mitomycin C-treated 3T3-J2 cells. Keratinocytes formed two-dimensional cell aggregates during overnight culture. The aggregates were maintained at 37°C and 10% CO<sub>2</sub> in a chamber mounted on a microscope (Axiovert 200M; Carl Zeiss), and then serial images of the aggregates were obtained at 5-min intervals for 30 min. Locomotion speed was measured by analyzing time-lapse images with Volocity (Perkin-Elmer) on the graphic tablet.

### Computer simulation

We defined the rotational motion of a target cell as the rotation of surrounding cells around the target cell. The rotational speed of surrounding cells was set to decrease in function of the distance  $l$  from the target cell. All cells in a colony were provided with the ability to rotate at  $\pi/2$  per hour per cell for the two-cell colony. This arrangement of rotation for each cell results in each one of the two cells rotating at  $\pi/h$  around the center of two cells. We set the functional form of the rotational speed in an exponential form as  $\omega = \omega_0 \exp[-(l - l_0)/d]$ , where  $l_0$  is the equilibrium distance between contacting cells and  $\omega_0$  and  $d$  are parameters to be fixed by comparing with observation. The  $\omega_0$  has to be smaller, as the number of sticking cells increases with the total number  $N$  of cells in a colony. To avoid the overlap of cells, we introduced a process where overlapping cells repel each other and go back to the equilibrium distance by the same amount for the overlapping cells. We made this procedure to all cells in a colony with a time step of 1 min. To avoid the outward motion of cells away from a colony, we introduced a boundary with a circle of radius  $R$  from the center of the colony. When a cell tried to move out from the cell boundary, the cell was pushed back. With this set-up, we made a Fortran program to simulate the movement of cells in a colony with various numbers of cells. For the simulation, we took all cells as spheres with the radius of  $r_{\text{cell}} = 10 \mu\text{m}$ , and also provided the variable extension of  $e = 2 \mu\text{m}$ . Hence, the equilibrium distance of contacting cells was assumed as  $l_0 = 24 \mu\text{m}$ . For the presentation of numerical results, we took  $\omega_0 = \pi/2/h$  for  $n = 2$  and gradually decrease to  $\pi/5/h$  for  $n = 100$  with  $d = l_0/2$ , to take into account the effect of sticking of cells controlled by the distance

parameter  $d$ . We defined the radius of the boundary of a colony as  $R^2 = l_0^2(N/2)$ . All cells were distributed randomly in the colony by using the random number generator. When we introduced cells with opposite or reduced rotational speed by some fraction, we also used the random number generator to confer these parameters to the cells. The Fortran program is provided in the online supplemental material.

### Online supplemental material

Fig. S1 shows motion dynamics of keratinocytes seeded at clonal density in various cell culture media. Fig. S2 shows collective motion dynamics of keratinocytes in a progressively growing colony. Fig. S3 shows fractionation of cultured keratinocytes based on  $\alpha 6$  integrin and IVL expression. Fig. S4 shows characterization and validation of functional shRNA targeted to *ITGA6*. Fig. S5 shows that  $\alpha 6\beta 4$  integrin is involved in collective motion of keratinocytes. Videos 1 and 2 show the dynamics of two-cell colonies, as shown in Fig. 1 A. Videos 3–5 show motion dynamics of keratinocytes at high density culture in serum-free media CnT-PR, EpiLife, and MCDB153, respectively. Video 6 shows collective motion dynamics of keratinocytes in a progressively growing colony, as shown in Fig. S2. The supplemental program file contains the Fortran program that we used for the simulation experiments. Online supplemental material is available at <http://www.jcb.org/cgi/content/full/jcb.201409024/DC1>. Additional data are available in the JCB DataViewer at <http://dx.doi.org/10.1083/jcb.201409024.dv>.

We thank Professor H. Green and Japan Tissue Engineering Co., Ltd. for providing 3T3-J2 cells; Drs. F. Gorostidi, Y. Hirako, A. Rochat, Y. Shirakata, D. Tsuruta, and Mr. M. Inoue for valuable discussion and providing materials; Dr. K. Kameda and Mr. M. Shudo for flow cytometry and electron microscopy; and Mrs. S. Matsushita for lentivirus production. We are also grateful to Dr. A.W. Amici for critical reading of the manuscript.

This work was supported by the Japan Society for the promotion of Science KAKENHI grants 22791080 and 24791159, Research Fund for Promotion of Industry-Academia Joint Research and Development from Ehime University to D. Nanba, and the European Community through the seventh framework program (EuroSyStem and OptiStem) to Y. Barrandon.

The authors declare no competing financial interests.

Submitted: 4 September 2014

Accepted: 17 March 2015

## References

- Barrandon, Y., and H. Green. 1985. Cell size as a determinant of the clone-forming ability of human keratinocytes. *Proc. Natl. Acad. Sci. USA*. 82:5390–5394. <http://dx.doi.org/10.1073/pnas.82.16.5390>
- Barrandon, Y., and H. Green. 1987a. Cell migration is essential for sustained growth of keratinocyte colonies: the roles of transforming growth factor- $\alpha$  and epidermal growth factor. *Cell*. 50:1131–1137. [http://dx.doi.org/10.1016/0092-8674\(87\)90179-6](http://dx.doi.org/10.1016/0092-8674(87)90179-6)
- Barrandon, Y., and H. Green. 1987b. Three clonal types of keratinocyte with different capacities for multiplication. *Proc. Natl. Acad. Sci. USA*. 84:2302–2306. <http://dx.doi.org/10.1073/pnas.84.8.2302>
- Barrandon, Y., N. Grasset, A. Zaffalon, F. Gorostidi, S. Claudinot, S.L. Droz-Georget, D. Nanba, and A. Rochat. 2012. Capturing epidermal stemness for regenerative medicine. *Semin. Cell Dev. Biol.* 23:937–944. <http://dx.doi.org/10.1016/j.semcdb.2012.09.011>
- Blanpain, C., and E. Fuchs. 2009. Epidermal homeostasis: a balancing act of stem cells in the skin. *Nat. Rev. Mol. Cell Biol.* 10:207–217. <http://dx.doi.org/10.1038/nrm2636>
- Cavani, A., G. Zambruno, A. Marconi, V. Manca, M. Marchetti, and A. Giannetti. 1993. Distinctive integrin expression in the newly forming epidermis during wound healing in humans. *J. Invest. Dermatol.* 101:600–604. <http://dx.doi.org/10.1111/1523-1747.ep12366057>
- Claudinot, S., M. Nicolas, H. Oshima, A. Rochat, and Y. Barrandon. 2005. Long-term renewal of hair follicles from clonogenic multipotent stem cells. *Proc. Natl. Acad. Sci. USA*. 102:14677–14682. <http://dx.doi.org/10.1073/pnas.0507250102>
- Clayton, E., D.P. Doupe, A.M. Klein, D.J. Winton, B.D. Simons, and P.H. Jones. 2007. A single type of progenitor cell maintains normal epidermis. *Nature*. 446:185–189. <http://dx.doi.org/10.1038/nature05574>
- De Luca, M., G. Pellegrini, and H. Green. 2006. Regeneration of squamous epithelia from stem cells of cultured grafts. *Regen. Med.* 1:45–57. <http://dx.doi.org/10.2217/17460751.1.1.45>

- De Rosa, L., S. Carulli, F. Cocchiarella, D. Quaglino, E. Enzo, E. Franchini, A. Giannetti, G. De Santis, A. Recchia, G. Pellegrini, and M. De Luca. 2014. Long-term stability and safety of transgenic cultured epidermal stem cells in gene therapy of junctional epidermolysis bullosa. *Stem Cell Reports*. 2:1–8. <http://dx.doi.org/10.1016/j.stemcr.2013.11.001>
- Erdmann, G., C. Volz, and M. Boutros. 2012. Systematic approaches to dissect biological processes in stem cells by image-based screening. *Biotechnol. J.* 7:768–778. <http://dx.doi.org/10.1002/biot.201200117>
- Fortunel, N.O., E. Cadio, P. Vaigot, L. Chadli, S. Moratille, S. Bouet, P.H. Roméo, and M.T. Martin. 2010. Exploration of the functional hierarchy of the basal layer of human epidermis at the single-cell level using parallel clonal microcultures of keratinocytes. *Exp. Dermatol.* 19:387–392. <http://dx.doi.org/10.1111/j.1600-0625.2009.01046.x>
- Fuchs, E. 2012. The impact of cell culture on stem cell research. *Cell Stem Cell*. 10:640–641. <http://dx.doi.org/10.1016/j.stem.2012.03.010>
- Gallico, G.G., III, N.E. O'Connor, C.C. Compton, O. Kehinde, and H. Green. 1984. Permanent coverage of large burn wounds with autologous cultured human epithelium. *N. Engl. J. Med.* 311:448–451. <http://dx.doi.org/10.1056/NEJM198408163110706>
- Green, H. 2008. The birth of therapy with cultured cells. *BioEssays*. 30:897–903. <http://dx.doi.org/10.1002/bies.20797>
- Green, H., K. Easley, and S. Iuchi. 2003. Marker succession during the development of keratinocytes from cultured human embryonic stem cells. *Proc. Natl. Acad. Sci. USA*. 100:15625–15630. <http://dx.doi.org/10.1073/pnas.0307226100>
- Guenou, H., X. Nissan, F. Larcher, J. Feteira, G. Lemaitre, M. Saidani, M. Del Rio, C.C. Barrault, F.X. Bernard, M. Peschanski, et al. 2009. Human embryonic stem-cell derivatives for full reconstruction of the pluristratified epidermis: a preclinical study. *Lancet*. 374:1745–1753. [http://dx.doi.org/10.1016/S0140-6736\(09\)61496-3](http://dx.doi.org/10.1016/S0140-6736(09)61496-3)
- Hashimoto, K., S. Higashiyama, H. Asada, E. Hashimura, T. Kobayashi, K. Sudo, T. Nakagawa, D. Damm, K. Yoshikawa, and N. Taniguchi. 1994. Heparin-binding epidermal growth factor-like growth factor is an autocrine growth factor for human keratinocytes. *J. Biol. Chem.* 269:20060–20066.
- Hata, N., Y. Agatahama, M. Kino-oka, and M. Taya. 2005. Relations between individual cellular motions and proliferative potentials in successive cultures of human keratinocytes. *Cytotechnology*. 47:127–131. <http://dx.doi.org/10.1007/s10616-005-3749-4>
- Ito, M., Y. Liu, Z. Yang, J. Nguyen, F. Liang, R.J. Morris, and G. Cotsarelis. 2005. Stem cells in the hair follicle bulge contribute to wound repair but not to homeostasis of the epidermis. *Nat. Med.* 11:1351–1354. <http://dx.doi.org/10.1038/nm1328>
- Itoh, M., M. Kiuru, M.S. Cairo, and A.M. Christiano. 2011. Generation of keratinocytes from normal and recessive dystrophic epidermolysis bullosa-induced pluripotent stem cells. *Proc. Natl. Acad. Sci. USA*. 108:8797–8802. <http://dx.doi.org/10.1073/pnas.1100332108>
- Jensen, K.B., and F.M. Watt. 2006. Single-cell expression profiling of human epidermal stem and transit-amplifying cells: Lrig1 is a regulator of stem cell quiescence. *Proc. Natl. Acad. Sci. USA*. 103:11958–11963. <http://dx.doi.org/10.1073/pnas.0601886103>
- Jones, P.H., and F.M. Watt. 1993. Separation of human epidermal stem cells from transit amplifying cells on the basis of differences in integrin function and expression. *Cell*. 73:713–724. [http://dx.doi.org/10.1016/0092-8674\(93\)90251-K](http://dx.doi.org/10.1016/0092-8674(93)90251-K)
- Jones, P.H., S. Harper, and F.M. Watt. 1995. Stem cell patterning and fate in human epidermis. *Cell*. 80:83–93. [http://dx.doi.org/10.1016/0092-8674\(95\)90453-0](http://dx.doi.org/10.1016/0092-8674(95)90453-0)
- Jones, P.H., B.D. Simons, and F.M. Watt. 2007. Sic transit gloria: farewell to the epidermal transit amplifying cell? *Cell Stem Cell*. 1:371–381. <http://dx.doi.org/10.1016/j.stem.2007.09.014>
- Ker, D.F., L.E. Weiss, S.N. Junkers, M. Chen, Z. Yin, M.F. Sandbothe, S.I. Huh, S. Eom, R. Bise, E. Osuna-Highley, et al. 2011. An engineered approach to stem cell culture: automating the decision process for real-time adaptive subculture of stem cells. *PLoS ONE*. 6:e27672. <http://dx.doi.org/10.1371/journal.pone.0027672>
- Kino-oka, M., Y. Agatahama, N. Hata, and M. Taya. 2004. Evaluation of growth potential of human epithelial cells by motion analysis of pairwise rotation under glucose-limited condition. *Biochem. Eng. J.* 19:109–117. <http://dx.doi.org/10.1016/j.bej.2003.11.004>
- Kino-oka, M., Y. Maeda, Y. Sato, N. Maruyama, Y. Takezawa, A.B. Khoshfetrat, K. Sugawara, and M. Taya. 2009. Morphological evaluation of chondrogenic potency in passaged cell populations. *J. Biosci. Bioeng.* 107:544–551. <http://dx.doi.org/10.1016/j.jbiosc.2008.12.018>
- Krawczyk, W.S., and G.F. Wilgram. 1973. Hemidesmosome and desmosome morphogenesis during epidermal wound healing. *J. Ultrastruct. Res.* 45:93–101. [http://dx.doi.org/10.1016/S0022-5320\(73\)90035-X](http://dx.doi.org/10.1016/S0022-5320(73)90035-X)
- Legg, J., U.B. Jensen, S. Broad, I. Leigh, and F.M. Watt. 2003. Role of melanosomal chondroitin sulphate proteoglycan in patterning stem cells in human interfollicular epidermis. *Development*. 130:6049–6063. <http://dx.doi.org/10.1242/dev.00837>
- Li, A., P.J. Simmons, and P. Kaur. 1998. Identification and isolation of candidate human keratinocyte stem cells based on cell surface phenotype. *Proc. Natl. Acad. Sci. USA*. 95:3902–3907. <http://dx.doi.org/10.1073/pnas.95.7.3902>
- Lowell, S., P. Jones, I. Le Roux, J. Dunne, and F.M. Watt. 2000. Stimulation of human epidermal differentiation by Delta–Notch signalling at the boundaries of stem-cell clusters. *Curr. Biol.* 10:491–500. [http://dx.doi.org/10.1016/S0960-9822\(00\)00451-6](http://dx.doi.org/10.1016/S0960-9822(00)00451-6)
- Marchisio, P.C., S. Bondanza, O. Cremona, R. Cancedda, and M. De Luca. 1991. Polarized expression of integrin receptors ( $\alpha_6\beta_4$ ,  $\alpha_2\beta_1$ ,  $\alpha_3\beta_1$ , and  $\alpha_5\beta_1$ ) and their relationship with the cytoskeleton and basement membrane matrix in cultured human keratinocytes. *J. Cell Biol.* 112:761–773. <http://dx.doi.org/10.1083/jcb.112.4.761>
- Margadant, C., E. Frijns, K. Wilhelmssen, and A. Sonnenberg. 2008. Regulation of hemidesmosome disassembly by growth factor receptors. *Curr. Opin. Cell Biol.* 20:589–596. <http://dx.doi.org/10.1016/j.ceb.2008.05.001>
- Mascré, G., S. Dekoninck, B. Drogat, K.K. Youssef, S. Brohé, P.A. Sotiropoulou, B.D. Simons, and C. Blanpain. 2012. Distinct contribution of stem and progenitor cells to epidermal maintenance. *Nature*. 489:257–262. <http://dx.doi.org/10.1038/nature11393>
- Mathor, M.B., G. Ferrari, E. Dellambra, M. Cilli, F. Mavilio, R. Cancedda, and M. De Luca. 1996. Clonal analysis of stably transduced human epidermal stem cells in culture. *Proc. Natl. Acad. Sci. USA*. 93:10371–10376. <http://dx.doi.org/10.1073/pnas.93.19.10371>
- Matsuoka, F., I. Takeuchi, H. Agata, H. Kagami, H. Shiono, Y. Kiyota, H. Honda, and R. Kato. 2013. Morphology-based prediction of osteogenic differentiation potential of human mesenchymal stem cells. *PLoS ONE*. 8:e55082. <http://dx.doi.org/10.1371/journal.pone.0055082>
- Matsushita, N., S. Matsushita, S. Hirakawa, and S. Higashiyama. 2013. Doxycycline-dependent inducible and reversible RNA interference mediated by a single lentivirus vector. *Biosci. Biotechnol. Biochem.* 77:776–781. <http://dx.doi.org/10.1271/bbb.120917>
- Mavilio, F., G. Pellegrini, S. Ferrari, F. Di Nunzio, E. Di Iorio, A. Recchia, G. Maruggi, G. Ferrari, E. Provasi, C. Bonini, et al. 2006. Correction of junctional epidermolysis bullosa by transplantation of genetically modified epidermal stem cells. *Nat. Med.* 12:1397–1402. <http://dx.doi.org/10.1038/nm1504>
- Metallo, C.M., L. Ji, J.J. de Pablo, and S.P. Palecek. 2008. Retinoic acid and bone morphogenetic protein signaling synergize to efficiently direct epithelial differentiation of human embryonic stem cells. *Stem Cells*. 26:372–380. <http://dx.doi.org/10.1634/stemcells.2007-0501>
- Nanba, D., N. Matsushita, F. Toki, and S. Higashiyama. 2013a. Efficient expansion of human keratinocyte stem/progenitor cells carrying a transgene with lentiviral vector. *Stem Cell Res Ther.* 4:127. <http://dx.doi.org/10.1186/scrt338>
- Nanba, D., F. Toki, N. Matsushita, S. Matsushita, S. Higashiyama, and Y. Barrandon. 2013b. Actin filament dynamics impacts keratinocyte stem cell maintenance. *EMBO Mol. Med.* 5:640–653. <http://dx.doi.org/10.1002/emmm.201201839>
- Oshima, H., A. Rochat, C. Kedzia, K. Kobayashi, and Y. Barrandon. 2001. Morphogenesis and renewal of hair follicles from adult multipotent stem cells. *Cell*. 104:233–245. [http://dx.doi.org/10.1016/S0092-8674\(01\)00208-2](http://dx.doi.org/10.1016/S0092-8674(01)00208-2)
- Pellegrini, G., C.E. Traverso, A.T. Franz, M. Zingirian, R. Cancedda, and M. De Luca. 1997. Long-term restoration of damaged corneal surfaces with autologous cultivated corneal epithelium. *Lancet*. 349:990–993. [http://dx.doi.org/10.1016/S0140-6736\(96\)11188-0](http://dx.doi.org/10.1016/S0140-6736(96)11188-0)
- Pellegrini, G., R. Ranno, G. Stracuzzi, S. Bondanza, L. Guerra, G. Zambruno, G. Micali, and M. De Luca. 1999. The control of epidermal stem cells (holoclonal) in the treatment of massive full-thickness burns with autologous keratinocytes cultured on fibrin. *Transplantation*. 68:868–879. <http://dx.doi.org/10.1097/00007890-199909270-00021>
- Pellegrini, G., E. Dellambra, O. Golisano, E. Martinelli, I. Fantozzi, S. Bondanza, D. Ponzin, F. McKeon, and M. De Luca. 2001. p63 identifies keratinocyte stem cells. *Proc. Natl. Acad. Sci. USA*. 98:3156–3161. <http://dx.doi.org/10.1073/pnas.061032098>
- Pellegrini, G., P. Rama, S. Matuska, A. Lambiase, S. Bonini, A. Pocobelli, R.G. Colabelli, L. Spadea, R. Fasciani, E. Balestrazzi, et al. 2013. Biological parameters determining the clinical outcome of autologous cultures of limbal stem cells. *Regen. Med.* 8:553–567. <http://dx.doi.org/10.2217/rme.13.43>
- Rabinovitz, I., A. Tokar, and A.M. Mercurio. 1999. Protein kinase C-dependent mobilization of the  $\alpha_6\beta_4$  integrin from hemidesmosomes and its association with actin-rich cell protrusions drive the chemotactic migration of carcinoma cells. *J. Cell Biol.* 146:1147–1160. <http://dx.doi.org/10.1083/jcb.146.5.1147>

- Rama, P., S. Bonini, A. Lambiase, O. Golisano, P. Paterna, M. De Luca, and G. Pellegrini. 2001. Autologous fibrin-cultured limbal stem cells permanently restore the corneal surface of patients with total limbal stem cell deficiency. *Transplantation*. 72:1478–1485. <http://dx.doi.org/10.1097/00007890-200111150-00002>
- Rama, P., S. Matuska, G. Paganoni, A. Spinelli, M. De Luca, and G. Pellegrini. 2010. Limbal stem-cell therapy and long-term corneal regeneration. *N. Engl. J. Med.* 363:147–155. <http://dx.doi.org/10.1056/NEJMoa0905955>
- Rheinwald, J.G., and H. Green. 1975. Serial cultivation of strains of human epidermal keratinocytes: the formation of keratinizing colonies from single cells. *Cell*. 6:331–343. [http://dx.doi.org/10.1016/S0092-8674\(75\)80001-8](http://dx.doi.org/10.1016/S0092-8674(75)80001-8)
- Rochat, A., K. Kobayashi, and Y. Barrandon. 1994. Location of stem cells of human hair follicles by clonal analysis. *Cell*. 76:1063–1073. [http://dx.doi.org/10.1016/0092-8674\(94\)90383-2](http://dx.doi.org/10.1016/0092-8674(94)90383-2)
- Rochat, A., N. Grasset, F. Gorostidi, S. Lathion, and Y. Barrandon. 2012. Regeneration of epidermis from adult human keratinocyte stem cells. *In Handbook of Stem Cells*. Vol. 2. A. Atala, and R. Lanza, editors. Academic Press, London. 767–780.
- Ronfard, V., and Y. Barrandon. 2001. Migration of keratinocytes through tunnels of digested fibrin. *Proc. Natl. Acad. Sci. USA*. 98:4504–4509. <http://dx.doi.org/10.1073/pnas.071631698>
- Ronfard, V., J.M. Rives, Y. Neveux, H. Carsin, and Y. Barrandon. 2000. Long-term regeneration of human epidermis on third degree burns transplanted with autologous cultured epithelium grown on a fibrin matrix. *Transplantation*. 70:1588–1598. <http://dx.doi.org/10.1097/00007890-200012150-00009>
- Schlüter, H., S. Paquet-Fifield, P. Gangatirkar, J. Li, and P. Kaur. 2011. Functional characterization of quiescent keratinocyte stem cells and their progeny reveals a hierarchical organization in human skin epidermis. *Stem Cells*. 29:1256–1268. <http://dx.doi.org/10.1002/stem.675>
- Schneider, A., D. Spitkovsky, P. Riess, M. Molcanyi, N. Kamisetti, M. Maegele, J. Hescheler, and U. Schaefer. 2008. “The good into the pot, the bad into the crop!”—a new technology to free stem cells from feeder cells. *PLoS ONE*. 3:e3788. <http://dx.doi.org/10.1371/journal.pone.0003788>
- Seiler, C., A. Gazdhar, M. Reyes, L.M. Benneker, T. Geiser, K.A. Siebenrock, and B. Gantenbein-Ritter. 2012. Time-lapse microscopy and classification of 2D human mesenchymal stem cells based on cell shape picks up myogenic from osteogenic and adipogenic differentiation. *J. Tissue Eng. Regen. Med.* 8:737–746.
- Tanner, K., H. Mori, R. Mroue, A. Bruni-Cardoso, and M.J. Bissell. 2012. Coherent angular motion in the establishment of multicellular architecture of glandular tissues. *Proc. Natl. Acad. Sci. USA*. 109:1973–1978. <http://dx.doi.org/10.1073/pnas.1119578109>
- Taylor, G., M.S. Lehrer, P.J. Jensen, T.T. Sun, and R.M. Lavker. 2000. Involvement of follicular stem cells in forming not only the follicle but also the epidermis. *Cell*. 102:451–461. [http://dx.doi.org/10.1016/S0092-8674\(00\)00050-7](http://dx.doi.org/10.1016/S0092-8674(00)00050-7)
- Terunuma, A., K.L. Jackson, V. Kapoor, W.G. Telford, and J.C. Vogel. 2003. Side population keratinocytes resembling bone marrow side population stem cells are distinct from label-retaining keratinocyte stem cells. *J. Invest. Dermatol.* 121:1095–1103. <http://dx.doi.org/10.1046/j.1523-1747.2003.12531.x>
- Watt, F.M., and H. Green. 1981. Involucrin synthesis is correlated with cell size in human epidermal cultures. *J. Cell Biol.* 90:738–742. <http://dx.doi.org/10.1083/jcb.90.3.738>