

An early record of *Meloidogyne fallax* from Ireland

Olivera Topalović^{1,2,4}, John F. Moore³, Toon Janssen², Wim Bert², Gerrit Karssen^{1,2}

1 National Plant Protection Organization, Wageningen, Geertjesweg 15, 6706 EA, The Netherlands **2** Nematology Research Unit, Department of Biology, Faculty of Sciences, University of Gent, K. L. Ledeganckstraat 35, 9000 Gent, Belgium **3** 6 Maywood Lawn, Raheny, Dublin D05AD79, Ireland **4** Julius Kühn-Institut – Federal Research Centre for Cultivated Plants (JKI), Messeweg 11-12, 38104 Braunschweig, Germany

Corresponding author: Gerrit Karssen (g.karssen@nvwa.nl)

Academic editor: S. Subbotin | Received 20 November 2016 | Accepted 12 December 2016 | Published 5 January 2017

<http://zoobank.org/2F50DBB8-148D-45AD-9BEF-7A44C2D76818>

Citation: Topalović O, Moore JF, Janssen T, Bert W, Karssen G (2017) An early record of *Meloidogyne fallax* from Ireland. ZooKeys 643: 33–52. <https://doi.org/10.3897/zookeys.643.11266>

Abstract

Root-knot nematodes, *Meloidogyne* spp., cause huge economic losses worldwide. Currently, three *Meloidogyne* spp. are present on the quarantine A2 list of EPPO, *M. chitwoodi*, *M. fallax* and *M. enterolobii*. As a quarantine organism, *M. fallax* has been detected in England and Northern Ireland on sport turf in 2011, and in England on leek in 2013. However, its presence in Ireland has probably been overlooked since 1965, when Mr. John F. Moore and Dr. Mary T. Franklin had detected a new *Meloidogyne* species for that time. While the relevant data was recorded and a preliminary manuscript describing the species was prepared but never submitted for publication, and together with the original slides, pictures and drawings, it was restudied recently. We compared the population of Irish *Meloidogyne* sp. to other similar *Meloidogyne* spp. Careful observation and comparison shows that it belongs to *M. fallax*. The characters found to be common for Irish *Meloidogyne* sp. and *M. fallax* are female stylet length (14.6 µm) with oval to rounded basal knobs, oval shaped perineal pattern with moderately high dorsal arch, slender stylet in males (18.5 µm) with set off and rounded basal knobs, slightly set off male head with one post-labial annule and incomplete transverse incisures, and second-stage juveniles with large and rounded stylet basal knobs, and a gradually tapering tail (46.9 µm) with a broadly rounded tip and a clearly delimited smooth hyaline part sometimes marked by constrictions (12.9 µm). The host test and gall formation also correspond to *M. fallax*. The identification could not be additionally supported by molecular analysis, as we were unable to extract DNA from the old permanent slides. Nevertheless, our study reveals that the *Meloidogyne* species detected in Ireland in 1965 belongs to *M. fallax*.

Keywords

Root-knot nematode, Cork, morphology, morphometrics, host, characters

Introduction

Nematodes belonging to *Meloidogyne* spp. are among the most dangerous plant-parasitic nematodes worldwide and cause huge economic losses (Elling 2013). Out of more than 100 described *Meloidogyne* species (Hunt and Handoo 2009), three of them are present on the A2 list of EPPO at the moment, *M. chitwoodi*, *M. enterolobii* and *M. fallax* (EPPO/PQR 2014). There are very few records on the presence of root-knot nematodes in Ireland. However, they attracted attention after Entwistle (2003) described the process of developing yellow patches symptoms on golf courses throughout the UK and Ireland. These samples were positive for *M. naasi* and a new undescribed species which Karssen et al. (2004) described as *M. minor*. In 2011, *M. fallax* was detected on sport turf in Northern Ireland and England (EPPO 2013). There was a new record in 2013 in organic leeks (*Allium ampeloprasum* L.) in England with a very low risk to spread further. It was suspected that *M. fallax* was introduced with plant waste and soil of leeks produced in other EU member states (EPPO, OEPP/EPPO, 2013). Currently, *M. fallax* has been declared present with a restricted distribution in Northern Ireland and England (EPPO/PQR 2014). Nevertheless, the first presence of *Meloidogyne* spp. in Ireland has been overlooked. An annual report of Plant Sciences and Crop Husbandry Division (now named Teagasc) contains information about the *Meloidogyne* species attacking tomato (Moore 1965). In December 1965, the samples of galled tomato roots from an unheated greenhouse in Clonakilty, Cork were sent to the laboratory of Horticultural & Forestry Research Centre in Kinsealy for analysis. These galls contained visible *Meloidogyne* sp. females with well developed egg masses on the root surface. After extraction from the original tomato roots and from tomato roots grown in infested soil at the laboratory, all life stages of the nematode were obtained. In addition, the annual report of the Plant Sciences and Crop Husbandry Division includes a brief description and a host range test of this species (Moore 1966). Based on observations of Mr. John F. Moore and Dr. Mary T. Franklin (Rothamsted, UK) from 1965/66, it was marked as a new species which differed from all the known species at that time based on the male head and the unique perineal pattern in females. The name of the species was proposed, in an unpublished manuscript, as *Meloidogyne corksensis*, according to the county Cork where it had been found. In 1995, the Dutch NPPO received the original material of *Meloidogyne* sp. from Cork including permanent slides of 23 whole females, 18 males, 27 second-stage juveniles and 6 female perineal patterns, an unpublished manuscript, pictures and drawings. Based on our observations of this material, we hypothesize that it belongs to *M. fallax*, a quarantine species described five decades afterwards.

The main goal of our study was to compare the available original material of the population of *Meloidogyne* sp. detected in 1965 in Ireland to the type material of other similar *Meloidogyne* spp. Additionally, we tried to extract the DNA from the permanent slides originating from 1965 and 1966.

Materials and methods

Morphological and morphometrical analysis

In 1995, the Dutch NPPO received the original permanent slides of 23 whole females, 18 males, 27 second-stage juveniles and 6 female perineal patterns, including pictures, measurements and an unpublished manuscript. In 2005, all slides were re-mounted in glycerol.

Morphological observations of glycerine-embedded permanent slides of Irish *Meloidogyne* sp. were done using a compound light microscope (Zeiss Axio Imager 2). Pictures were obtained using a Leica DFC 450 digital camera. A compound light microscope (DM 2500, LEICA) equipped with differential interference contrast (DIC) was used for making drawings. Drawings and pictures were subsequently edited using GNU Image Manipulation Program (<http://gimp.org>). Permanent slides of the Irish *Meloidogyne* population were compared to type material (slides & living type populations) and reference populations, of similar *Meloidogyne* spp. (Table 1). See also Karsen (2002) and Karsen et al. (2004) for more details.

Host test

The original manuscript from 1966 describes in detail the conducted host range test of the Irish *Meloidogyne* sp.: Infested soil from the original site was placed together with a potential host plant species (seed/plant transplant) in 4-inch earthenware pots which were maintained in a glasshouse. The plant species used for the host range test are listed in Table 7. After 2 to 3 months, plants were removed from the pots and the root systems were examined for infections. The roots without visible galls were stained with cotton blue lactophenol to demonstrate if infection occurred. Infected plants are marked as a positive (+) and non-infected plants are marked as a negative (-).

Table 1. Populations of *Meloidogyne* spp. used for comparison to the original slides of an unknown Irish species.

Species	Material	Number	Male	Female	J2
<i>M. chitwoodi</i>	Type slides	(WT2076-WT2079)	2 paratypes	4 PP paratypes	26 paratypes
	Reference live material	E7149	31	/	31
<i>M. fallax</i>	Type slides	WT3127-WT3130	2 paratypes	2 PP paratypes	5 paratypes
	Type live material	E6147	30	/	30
<i>M. minor</i>	Type slides	WT3371-WT3374	2 paratypes	2 PP paratypes	5 paratypes
	Type live material	F714-4	27	/	30
<i>M. hapla</i>	Reference live material	C3093	/	/	23
<i>M. incognita</i>	Reference live material	Rgi-23/42	30	/	30

Molecular analysis

DNA extraction

As only permanent slides of the Irish *Meloidogyne* sp. originating from 1966 were available, we attempted to extract the DNA from fixed nematodes based on Rubtsova et al. (2005). Briefly, slides of second-stage juveniles of Irish population were carefully broken with scalpel and T.A.F.-fixed specimens were transferred to staining blocks containing phosphate-buffered saline (PBS). Two protocols of DNA extraction were performed, i) with NaOH and Tween solution (Janssen et al. 2016), and ii) with Worm Lysis Buffer (20 mM Tris-HCl, 100 mM KCl, 3.0 mM MgCl₂, 2.0 mM DTT, 0.9% Tween 20) and Proteinase K (Rubtsova et al. 2005). As a positive control, DNA was extracted from three fresh second-stage juveniles of *M. fallax* (source ID: E6147; host: *Lycopersicon esculentum* L.).

PCR and gel electrophoresis

For amplification of a 120 bp region of COX1 gene, the forward primer, JB3 (5'-TTTTTTGGG CATCCTGAGGTTTAT-3') (Bowles et al. 1992), was used in combination with a newly developed reversed primer, COIR120 (5'-ATTGGTTT-TATTGGTTGTTT-3'). The 23 µl of a master mix (10x PCR buffer, 10 mM dNTPs, 0.2 µl of forward primer (10 µM), 0.2 µl of reverse primer (10 µM) and 0.06 µl of Taq polymerase (QIAGEN)) and 2 µl of extracted DNA were used per PCR reaction. PCR conditions were 94 °C for 4 min; 4 x (94 °C for 30 sec, 58-54 °C for 30 sec (annealing T dropped 1°C in each cycle), 72 °C for 2 min), 45 x (94 °C for 30 sec, 54 °C for 30 sec, 72 °C for 1 min); 72°C for 10 min. Amplified PCR products were visualized using gel electrophoresis (1% agarose gel stained with GelRed (Biotium, Hayward)). The GeneRuler 250 bp DNA ladder (Thermo Fisher Scientific) was used as a reference according to the manufacturer's instructions. The electrophoresis was run at 100V for 35 minutes. The pictures of gels were obtained after exposition to the UV light.

Results

Morphology

Morphological characters used for comparison in this study were selected according to Eisenback and Hirschmann (1981), Jepson (1987), Karssen (2002) and Karssen et al. (2004).

Females

Body shape and perineal pattern

Females of Irish *Meloidogyne* sp. show oval to pyriform shape.

The perineal pattern of females of Irish *Meloidogyne* population was used for comparison according to Jepson (1987), although it is not sufficient to distinguish *M. fallax* and *M. chitwoodi* from each other (Karssen 2002, Karssen 1996). The perineal patterns of Irish females and type material of *M. chitwoodi* and *M. fallax* are similar, having ovoid to oval shape and moderately high dorsal arch. Compared to the more rounded perineal pattern in type material of *M. minor* (Karssen et al. 2004), the correspondence of the Irish population with *M. chitwoodi* and *M. fallax* is more apparent (Figure 1).

Stylet

The stylet is slender with dorsally curved shaft. Stylet knobs are large, oval to rounded, slightly backwardly sloping, which corresponds to the original description of *M. fallax* (Karssen 1996). Table 2 clearly shows the greatest similarity between stylet knobs of the unknown Irish species and *M. fallax*. The stylet length, a supporting morphometrical character, is presented in Table 5 and Table 6.

Second-stage juveniles

The stylet knobs shape, tail shape and hyaline tail terminus are used for morphological observations of second-stage juveniles according to Jepson (1987) and Karssen (2002).

Stylet knob shape

Mr. Moore and Dr. Franklin described a slender stylet with rounded basal knobs. In specimens where it was possible to see, we observed large, rounded, set-off basal knobs that are characteristic for *M. fallax* (see Table 3).

Tail shape and hyaline tail terminus

Mr. Moore and Dr. Franklin observed a rounded tail with a clear hyaline tail terminus which is occasionally “swollen”. Based on our observations (Table 3, Figure 2), the overall tail shape resembles the one originally described for *M. fallax* (Karssen 1996), i.e. gradually tapering tail with a broadly rounded tip and a clearly delimited smooth hyaline part. Some specimens in the Irish slides also show irregular constrictions at the hyaline region (Figure 5).

Our observations disagree with those of Mr. Moore and Dr. Franklin regarding the hemizonid position; it is located at the same position of the excretory pore rather

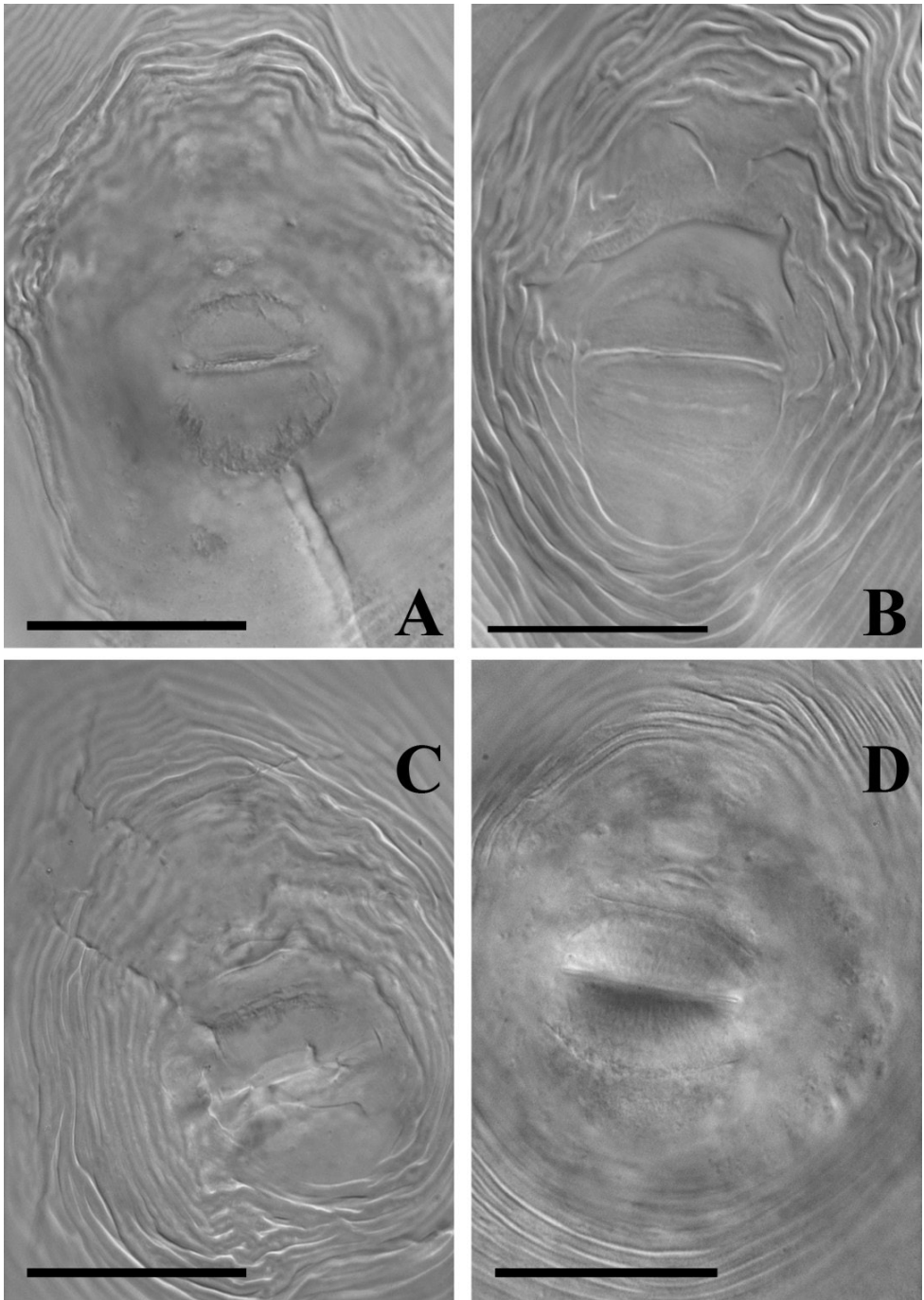


Figure 1. Comparison of perineal patterns in females. **A** Irish unknown *Meloidogyne* sp. **B** type material of *M. fallax*; **C** type material of *M. chitwoodi* **D** type material of *M. minor*. Scale bar = 20 μ m.

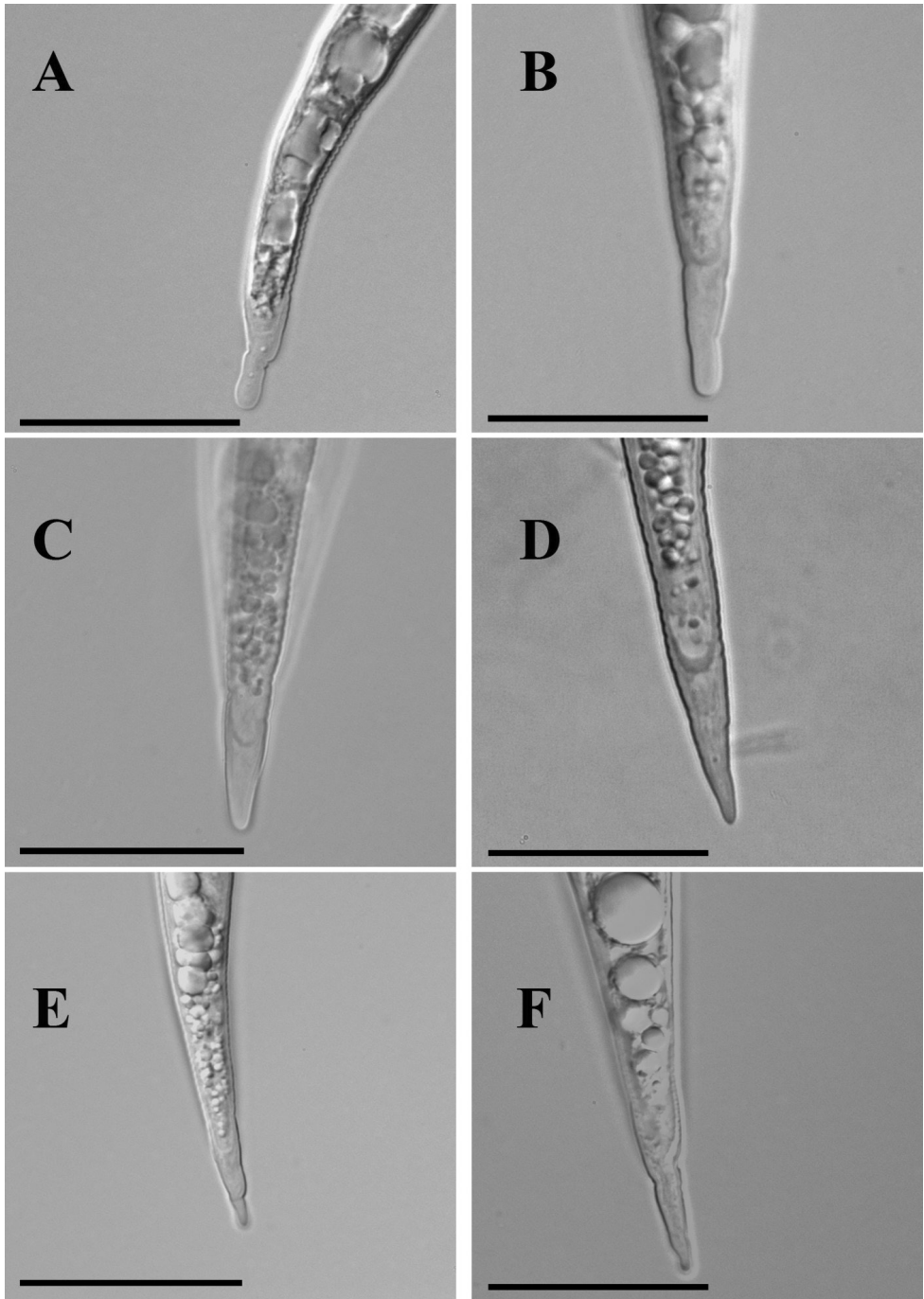


Figure 2. The comparison of tail and hyaline tail terminus shape in second-stage juveniles, lateral position. **A** an unknown Irish species **B** type material of *M. fallax*; **C** type material of *M. chitwoodi* **D** type material of *M. minor* **E** reference material of *M. hapla*; **F** reference material of *M. incognita*. Scale bar = 20 μ m.

Table 2. Differences in the stylet knob shape in females of compared *Meloidogyne* spp.

M & F + our observations	<i>M. fallax</i> (t.l.m. + o. d.)	<i>M. chitwoodi</i> (r.l.m. + o. d.)	<i>M. minor</i> (t.l.m. + o. d.)	<i>M. hapla</i> (o. d.)	<i>M. incognita</i> (o. d.)
Large, rounded	Large, rounded	Small, irregular	Large, ovoid	Small, rounded	Large, broadly elongate

*M & F (Mr. Moore & Dr. Franklin), t. l. m. (type live material), r. l. m (reference live material), o. d. (original description)

than 1-2 annules above the excretory pore as they described. The position of the hemizonid at the same level of the excretory pore is characteristic for second-stage juveniles of *M. fallax* (Karssen 1996). The hemizonid position of second-stage juveniles of other examined species is usually above the excretory pore, except for *M. minor* where it is below the excretory pore (Karssen et al. 2004).

Males

Stylet knob and head shape are considered the most important characters for male identification according to Eisenback and Hirschman (1981), Jepson (1987) and Karssen (2002).

Stylet knob shape

As presented in Table 4, the stylet is slender with large and rounded stylet knobs, set off from the shaft, corresponding to those present in the type and reference material of *M. fallax*. The shape of stylet knobs (Figure 3) excludes both *M. minor*, with large, transversely ovoid stylet knobs slightly sloping backwardly (Karssen et al. 2004), and *M. chitwoodi*, with smaller stylet knobs of irregular shape sloping backwardly (Golden et al. 1980).

Head shape

Mr. Moore and Dr. Franklin described three annules in lateral view of the head. The first one is deeply pinched off and succeeded by two other faintly seen annules. Our observations resemble the male head shape of type and reference material of *M. fallax*. It is described as a slightly set off with a single post-labial annule usually subdivided with a transverse incisure (Karssen 1996). As Figure 3 shows, a labial disc is slightly elevated and typical for *M. fallax*.

Morphometrics

Males

The stylet length and stylet knob width, the most relevant morphometrical characters of males, were measured for populations of all observed species. Table 5 illustrates that

Table 3. Comparison of the most important morphological characters in second stage juveniles of the studied *Meloidogyne* spp.

	Irish <i>Meloidogyne</i> sp. (M. & F. + our observ.)	<i>M. fallax</i> (type material + o. d.)	<i>M. chitwoodi</i> (type slides/r. l. m. + o. d.)	<i>M. minor</i> (type material + o. d.)	<i>M. hapla</i> (r. l. m. + o. d.)	<i>M. incognita</i> (r. l. m. + o. d.)
Stylet knob shape	Large, rounded	Prominent, rounded, set off	Small, irregular, sloping backwardly	Ovoid, slightly backwardly sloping	Small, rounded	Rounded, set off to transversely elongated, may indent anteriorly
Tail shape	Rounded to broadly rounded, gradually tapering until hyaline part	Gradually tapering until hyaline terminus, bluntly rounded tip	Conical, narrowly rounded tip	Gradually tapering until finely pointed tail tip, rectum weakly inflated	Short, narrow, difficult to delimitate it from hyaline region	Slightly tapering to subacute terminus
Hyaline tail terminus	Clear, rounded delimitation to the anterior, broadly rounded at the tip, sometimes with constrictions	Clearly delimited, smooth hyaline part ending in a broadly rounded tip, faint constrictions	Short, clear rounded delimitation at the anterior end, narrowly rounded tip	Long, pointed terminus, rounded delimitation at the anterior region	Short, often irregularly shaped, delimitation at the anterior region difficult to observe	Pointed tip, clear delimitation at the anterior region

* M & F (Moore & Franklin), o. d. (original description), r. l. m. (reference live material)

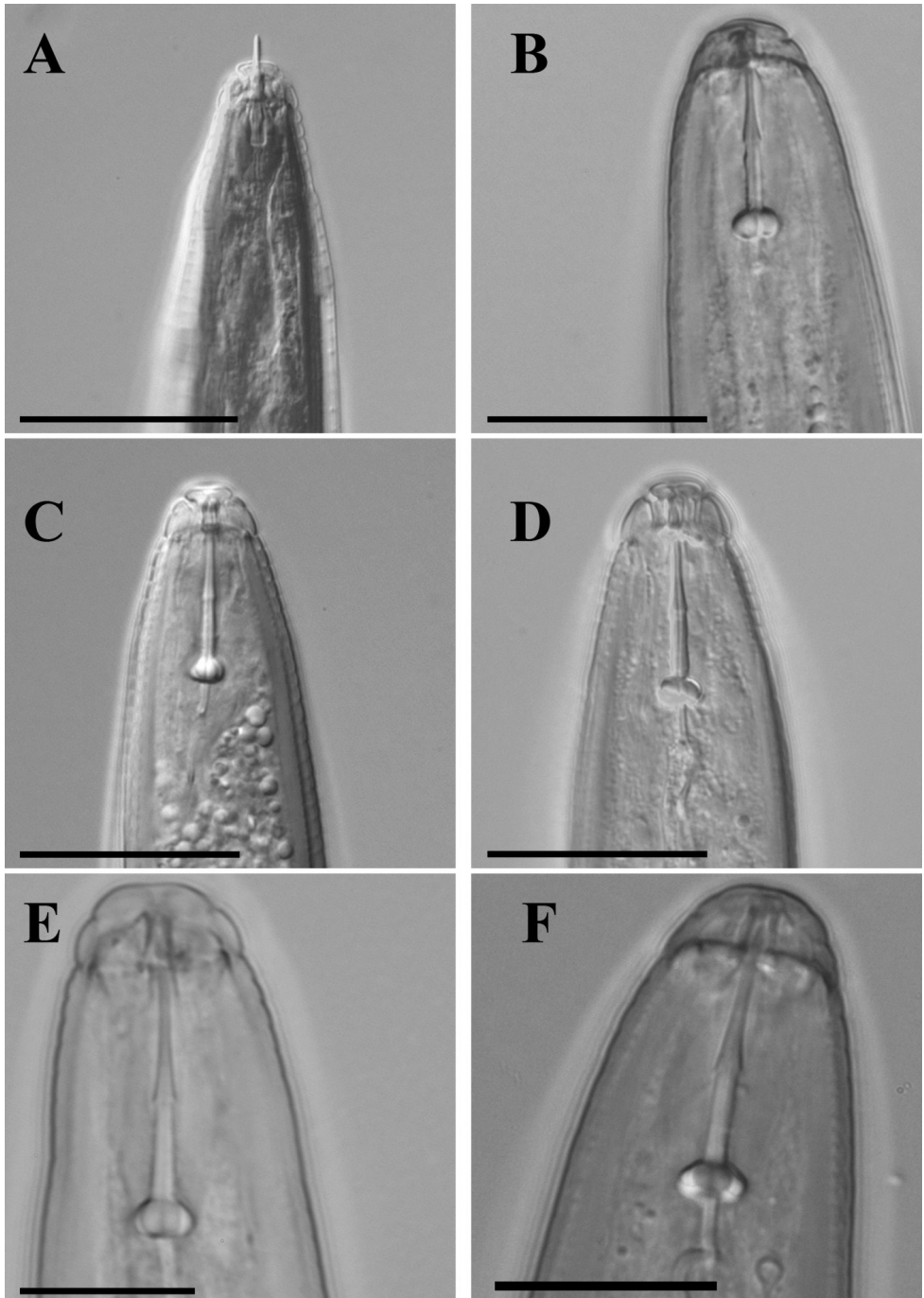


Figure 3. The comparison of anterior region in males of populations of observed *Meloidogyne* species. **A** an unknown Irish species (ventral position) **B** type material of *M. fallax* (lateral position); **C**: type material of *M. chitwoodi* (ventral position) **D** reference material of *M. hapla* (lateral position) **E** reference material of *M. incognita* (lateral position) **F** type material of *M. minor* (lateral position). Scale bar = 20 μ m.

Table 4. Stylet knob and head shape in males of compared *Meloidogyne* spp.

	M & F + our observations	<i>M. fallax</i> (type material + o. d.)	<i>M. chitwoodi</i> (type slides/r. l. m. + o. d.)	<i>M. minor</i> (type material + o. d.)	<i>M. hapla</i> (r. l. m. + o. d.)	<i>M. incognita</i> (r. l. m. + o. d.)
Stylet knob shape	Large, rounded, set off from the shaft	Large, rounded, set off from the shaft	Smaller, oval to irregularly shaped, backwardly sloping	Larger, ovoid, slightly backwardly sloping	Small, rounded, slightly backwardly sloping	Oval, angle between the shaft and knobs is more than 90°
Head shape	Labial disc elevated, head slightly set off with a post-labial annule, sometimes with an incomplete transverse incisure, as seen from the lateral view	Labial disc rounded and elevated, head slightly set off, one post-labial annule often with an incomplete transverse incisure	Labial disc not elevated, head not set off, no transverse incisures subdividing a single post-labial annule	Labial disc elevated, head not set off, one post-labial annule often with 1-2 transverse incisures	Labial disc elevated, head swollen, no transverse incisures on a post-labial annule	Labial disc not elevated, head slightly set off, incomplete transverse incisure on a post-labial annule

the average stylet length in Irish slides is 18.5 (17.0–20.0) μm with a smaller range than previously observed by Mr. Moore and Dr. Franklin, 18.0 (15.4–24.6) μm respectively. This is similar to the average stylet length in type material (type slides and type live material) of *M. fallax* (18.7 μm and 19.4 μm), and to type slides of *M. minor* (18.7 μm). The average stylet knob width of 3.9 μm in Irish slides is also within the range measured for *M. fallax* paratypes (Table 5).

Second-stage juveniles

The body length, tail length and hyaline tail length are considered the most reliable for morphometrical observation of second-stage juveniles. The body length range in our observations of Irish slides (280–410 μm) is narrower than observed by Mr. Moore and Dr. Franklin (361.5–432 μm) (Table 5). The tail length (46.9; 43.0–52.3 μm , noted by Mr. Moore and Dr. Franklin) is highly equivalent to that of *M. fallax*, 49.3; 46.1–55.6 (Karszen, 1996). It also matches the tail length measured in *M. fallax* paratypes (47.9; 41.0–54.0 μm). The hyaline tail length (12.9; 9.2–15.4 μm) is slightly lower than originally described, 13.5; 12.2–15.8 μm (Karszen, 1996) and when compared to the type live material of *M. fallax* (13.4; 10.5–15.0 μm). However, clearly delimited hyaline tail terminus ending in a broadly rounded tip and often with constrictions in Irish specimens resembles the one characteristic for *M. fallax* (Figure 2).

Females

Although the female stylet length measured by Mr. Moore and Dr. Franklin is included in our study, it is considered unreliable as the length was measured from the anterior body end and not from the stylet tip. Therefore, the stylet length of the Irish *Meloido-*

Table 5. Morphometrical analysis of most important characters in females, males and second-stage juveniles {mean ± SD (range), all measurements in µm}.

Character	Irish <i>Meloidogyne</i> sp. (M & F)	Irish <i>Meloidogyne</i> sp. (our observ.)	<i>M. fallax</i>		<i>M. chitwoodi</i>		<i>M. minor</i>		<i>M. hapla</i> (r. l. m.)	<i>M. incognita</i> (r. l. m.)
			Type slides	t. l. m.	Type slides	r. l. m.	t. l. m.	type slides		
Female stylet length	18.0±2.4 (15.4–24.6)	14.6±0.5 (14.0–15.0)	/	/	/	/	/	/	/	/
Male stylet length	19.5±1.5 (17.0–24.6)	18.5±1.1 (17.0–20.0)	18.7±0.3 (18.5–19.0)	19.4±0.7 (18.0–21.0)	18.0±0.0	18.3±0.7 (17.0–19.0)	17.0±0.0	18.7±0.7 (17.0–20.0)	/	20.2±2.1 (18.0–25.0)
Male stylet knob width	/	3.9±0.5 (3.0–4.5)	4.2±0.3 (4.0–4.5)	4.6±0.4 (3.5–5.0)	3.75±0.3 (3.5–4.0)	3.75±0.3 (3.0–4.0)	4.0±0.0	4.0±0.3 (3.0–4.5)	/	4.1±0.8 (3.0–6.0)
J2 body length	406.1±16.1 (361.5–432.0)	358.6±27.6 (280–410)	347±7.5 (340–360)	384.3±22.3 (330–420)	371.5±10.5 (350–385)	371.9±15.9 (330–400)	347.8±17.4 (331.5–372.3)	369.0±32.5 (280–410)	364.2±31.3 (300–410)	379.2±20.0 (340.0–435.0)
J2 tail length	46.9±2.5 (43.0–52.3)	42.0±3.7 (33–50)	45.4±2.2 (43–49)	47.9±2.6 (41.0–54.0)	39.9±2.3 (36.0–43.5)	44.0±2.6 (40.0–49.0)	49.0±3.3 (45.5–53.0)	52.8±4.4 (46.0–62.0)	41.1±6.8 (31.0–50.0)	55.0±2.9 (48.0–61.0)
J2 hyaline tail length	12.9±1.8 (9.2–15.4)	11.3±1.8 (8.5–15.5)	13.1±0.8 (12.0–14.0)	13.4±1.3 (10.5–15.0)	9.6±0.8 (8.0–11.0)	12.2±1.0 (10.0–14.0)	13.8±1.9 (11.5–16.5)	16.9±1.6 (14.0–20.0)	8.8±1.2 (6.5–11.0)	12.2±1.7 (9.0–15.0)

Table 6. Comparison of female stylet length between Irish population and different *Meloidogyne* spp. {mean \pm SD (range), all measurements in μm }

Species (females)	Unknown Irish sp. (Moore & Franklin)	Unknown Irish sp. (our observations)	<i>M. fallax</i> (original description)	<i>M. chitwoodi</i> (orig. descr.)	<i>M. hapla</i> (orig. descr.)	<i>M. minor</i> (orig. descr.)
Stylet length	18.0 \pm 2.4 (15.4–24.6)	14.6 \pm 0.5 (14.0–15.0)	14.5 \pm 0.4 (13.9–15.2)	11.9 \pm 0.3 (11.2–12.5)	13.0 \pm 0.3 (12.0–14.0)	14.2 \pm 1.1 (12.6–15.2)



Figure 4. The tomato roots infected with a population of Irish *Meloidogyne* sp.

gyne sp. was compared to the one originally described for species used for comparison in this study. Based on our measurements (Table 6), the average female stylet length (14.6 μm) corresponds to *M. fallax* (14.5 μm).

Host test

The host-range test for Irish *Meloidogyne* sp. included both weeds and cultural plants belonging to mono- and dicots. The Table 7 shows that all tested plants were positive for the infection except for *Fumaria officinalis*. The original picture from 1966 shows relatively small galls on tomato roots caused by this species (Figure 4).

Table 7. The host test conducted in 1966 for a population of Irish *Meloidogyne* sp.

Family	Genus + species	Result
Chenopodiaceae	<i>Beta vulgaris</i> L. *S	+
	<i>Chenopodium album</i> L. *Pl	+
Compositae	<i>Matricaria matricarioides</i> (Less.) Porter *Pl	+
	<i>Senecio jacobaea</i> L. *Pl	+
	<i>Sonchus</i> sp. *Pl	+
	<i>Lactuca sativa</i> L. * S	+
Caryophyllaceae	<i>Stellaria media</i> L. *Pl	+
	<i>Cerastium</i> sp. *Pl	+
Polygonaceae	<i>Polygonum aviculare</i> L. *Pl	+
	<i>Rumex</i> sp. *Pl	+
Graminaceae	<i>Hordeum vulgare</i> L. *S	+
	<i>Triticum aestivum</i> L. *S	+
	<i>Lolium multiflorum</i> (Lam.) *S	+
Cruciferae	<i>Capsella bursa-pastoris</i> L. *Pl	+
	<i>Brassica oleracea</i> L. var. <i>capitata</i> *S	+
	<i>Brassica napus</i> L. var. <i>napobrassica</i> *S	+
Euphorbiaceae	<i>Mercuria lisannua</i> L. *Pl	+
Urticaceae	<i>Urticadioica</i> L. *Pl	+
Labiatae	<i>Lamium purpureum</i> L. *Pl	+
Umbelliferae	<i>Daucus carota</i> L. *S	+
Fabaceae	<i>Vicia faba</i> L. *S	+
Plantaginaceae	<i>Plantago major</i> L. *Pl	+
Rosaceae	<i>Fragaria vesca</i> L. *Pl	+
	<i>Potentilla erecta</i> L. *Pl	+
Solanaceae	<i>Solanum tuberosum</i> L. (potato tuber)	+
Ranunculaceae	<i>Ranunculus repens</i> L. *Pl	+
	<i>Ranunculus acris</i> L. *Pl	+
Geraniaceae	<i>Erodium moschatum</i> L. *Pl	+
Amaranthaceae	<i>Spinacea oleracea</i> L. *S	+
Alliaceae	<i>Allium cepa</i> L. *S	+
Papaveraceae	<i>Fumaria officinalis</i> L. *Pl	–

*S = seed sown, Pl = plant transplants sourced local to the laboratory

Molecular analysis

The DNA extraction from glycerine-embedded nematodes in old slides was unsuccessful with both DNA extraction methods, as PCR product was not obtained. Contrastingly, the targeted region of COX1 gene was successfully amplified from all three fresh individuals of *M. fallax*. The primers used in this study have been designed to specifically amplify a short region of COX1 gene of *M. fallax* and *M. chitwoodi*, the two closely related species.

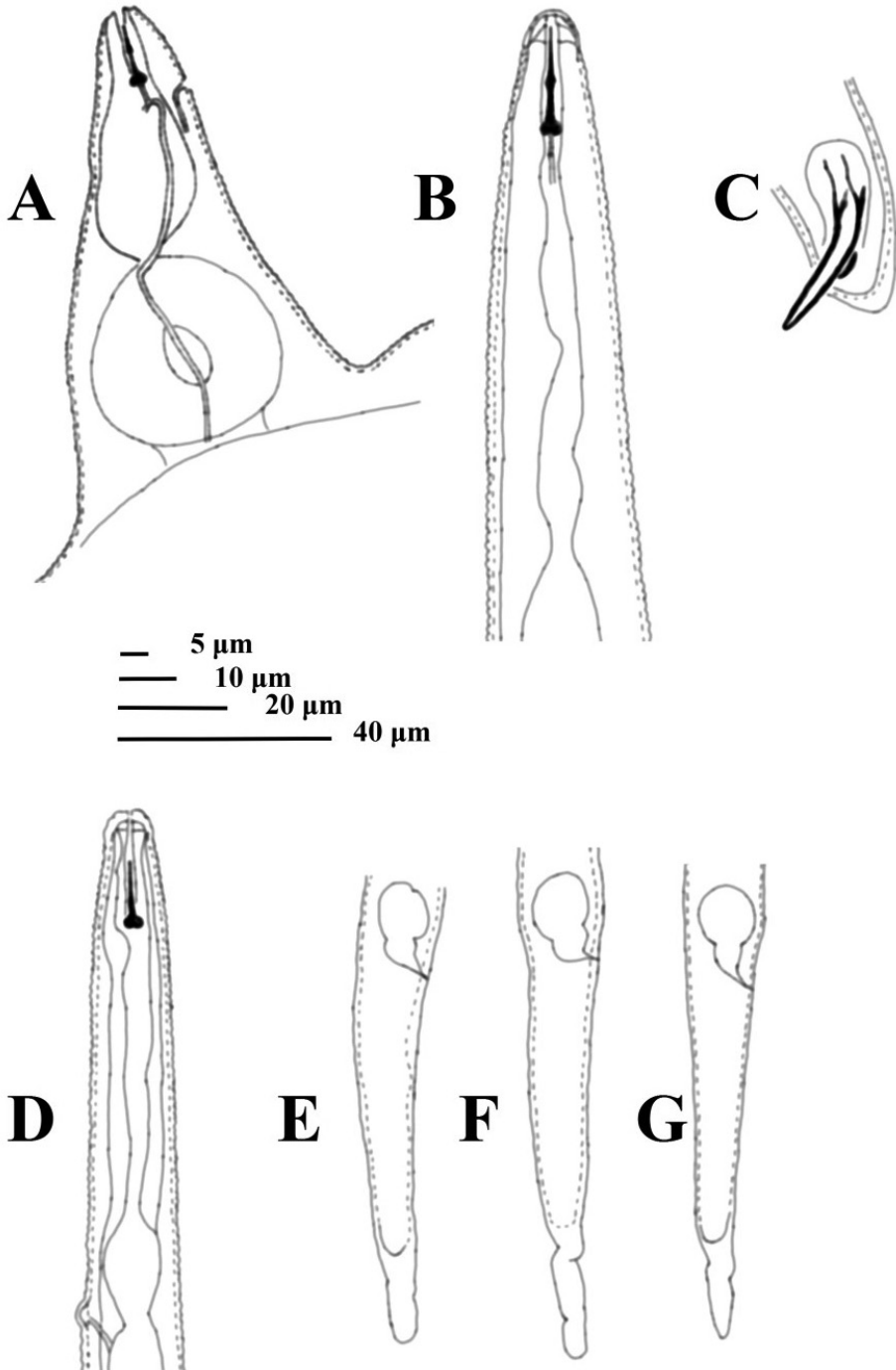


Figure 5. Irish population of *Meloidogyne* sp. (lateral position) from Ireland from 1965. **A** female anterior region **B** male anterior region **C** male – spicules **D** anterior region of the second-stage juvenile **E–G** tail variations in the second-stage juvenile.

Discussion

In the annual reports of Plant Sciences and Crop Husbandry Division from 1965 and 1966, a *Meloidogyne* species attacking tomato was recorded and briefly described by Mr. John F. Moore and Dr. Mary T. Franklin. Its host range was found to be very wide, including both dicots and monocots (Table 7). Some morphological characters, such as the position of anus and vulva on a marked protuberance, the posterior cuticular pattern of females, the unique male head and different characters of the second-stage juveniles, were considered important to characterize this putative new species. The differential diagnosis was mainly made to the species belonging to the former genus *Hypsoperine* (Sledge & Golden 1964) based on the posterior protuberance in females, although the perineal pattern was not comparable to other species. In addition, representatives of *Hypsoperine* sp., which was rejected as a valid genus (Plantard et al. 2007), were known to attack only monocots (Siddiqi 2000), while the host range of detected Irish population included both monocots and dicots.

Our observations show that the perineal pattern of Irish females greatly corresponds to the one originally described for *M. fallax* (Karssen 1996) and *M. chitwoodi* (Golden et al. 1980), making it difficult to decide if the striae are more or less coarse and belong to the former or to the latter. This is why Karssen (2002) and Karssen et al. (2004) did not use perineal pattern to differentiate *M. fallax* and *M. chitwoodi*, even though it is considered to be one of the most important diagnostic characters by Eisenback and Hirschmann (1981) and Jepson (1987). Importantly, the stylets of some females in Irish slides had remained intact and comparison showed a high similarity to those presented in the original description of *M. fallax* (Karssen 1996). None of measured female stylet lengths was within the range originally described for *M. chitwoodi* (Golden et al. 1980) indicating that the two species were not mixed together. According to Mr. Moore and Dr. Franklin, the duct of dorsal pharyngeal gland opens 4–6 µm behind the stylet base. We did not mark this character as diagnostic in females following Karssen (1996) and Jepson (1987), because a physical deformation of females in permanent slides made this distance variable among different specimens.

Males and second-stage juveniles appeared to have much more informative morphological and morphometrical characters for comparison with other similar species. Mr. Moore and Dr. Franklin described the male head with 3 annules where the first one is deeply pinched off and succeeded by two faintly seen annules. Contradictory to this, we observed one post-labial annule which is interrupted with 1–2 incomplete transverse incisures visible from the lateral view on dorsal and ventral sides. We also found a slightly set-off head region with a slightly elevated labial region as was originally described for males of *M. fallax* (Karssen 1996). To compare with, *M. chitwoodi* males have a flattened labial region.

Our careful observations show that the stylet length of males in Irish slides matches the one measured in paratypes of *M. fallax* and *M. minor*. Additionally, the stylet knob shape in Irish males, being rounded and set off from the shaft as originally described for *M. fallax*, mismatches ovoid and slightly backwardly sloping knobs characteristic for *M. minor* (Karssen et al. 2004).

The stylet length of second-stage juveniles was excluded from the basic comparison (Table 5) as it was difficult to accurately observe the stylet tip (Jepson 1987). However, large and rounded stylet knobs set off from the shaft in Irish specimens were comparable to the ones observed in type material of *M. fallax*, excluding both *M. minor* and *M. incognita* with stylet knobs slightly sloping posteriorly. On the contrary, body length of second-stage juveniles was easily observed. We noticed certain shrinkage of specimens in Irish slides compared to those observed by Mr. Moore and Dr. Franklin. This can be explained by the fact that up to 10% of shrinkage occurs after several years in slides mounted in both glycerol and lactophenol (Esser 1974). Nevertheless, the greatest correspondence of the mean body length in second-stage juveniles was found to the one described for paratypes of *M. fallax* (Karssen 1996). In addition, Eisenback and Triantaphyllou (1991) marked body length of second-stage juveniles as inadequate for species identification due to its high overlap between different species. Jepson (1987), on the other hand, included body length as important supplementary character in root-knot nematodes identification. Remarkably, in polyploid mitotic parthenogenetic *Meloidogyne* spp., the average body length is indeed not reliable for identification as there is a high variation of this character between different individuals of the same species. Also, a large body length seems to be correlated with increased chromosome number, e.g. tetraploidic forms of *M. microcephala* (Triantaphyllou and Hirschmann 1997) and polyploidic forms of *M. hapla* race B compared to haploid forms of *M. hapla* race A (Eisenback and Triantaphyllou 1991). In meiotic parthenogenetic species (e.g. *M. fallax* and *M. chitwoodi*) with haploid chromosome number of 18 and generally shorter body length compared to polyploidic species, high inter-specific and low intra-specific variation are sufficient enough to depict the body length as important diagnostic character.

It should also be pointed out that in Irish second-stage juveniles, a gradually tapering tail with bluntly rounded tip and a clearly delimited hyaline part with broadly rounded tip and often constrictions resemble the tail and tail hyaline shape characteristic for *M. fallax* (Karssen 1996). Moreover, we observed the hemizonid in second-stage juveniles positioned at the same level as the E-S pore, rejecting the observation of the hemizonid position to be 1–2 annules above the E-S pore as marked by Mr. Moore and Dr. Franklin. In fact, until Karssen (1996) described *M. fallax*, the hemizonid had never been observed at the same level as the E-S pore. Current observation supports the taxonomic value of the hemizonid position, as it was clearly visible above the E-S pore in paratypes of *M. chitwoodi*, *M. hapla* and *M. incognita*, and below the E-S pore in *M. minor* paratypes.

The host test of Irish *Meloidogyne* sp. conducted in 1966 showed a wide host range which included both dicots and monocots. Although Castagnone-Sereno et al. (2013) do not consider the host test to be important for identification of certain species, we found the fact that *M. fallax* also parasitizes monocots and dicots (EPPO 2004) as important additional argument. The original pictures of galled tomato roots made in 1965 and 1966, show relatively small galls that are typical for the roots attacked by *M. fallax* (Karssen 1996).

An additional molecular support for our data is lacking as we were unable to extract DNA from the 50-year-old slides with both protocols used. It was confirmed by PCR

amplification of COX1 gene, showing products only for fresh *M. fallax* specimens. The COX1 gene was chosen for analysis as it has been previously proven as a good marker for distinguishing closely related *Meloidogyne* species (Humphreys-Pereira and Elling 2015). It has the advantage of being maternally inherited and linked to an actual amino acid sequence. Moreover, there are many copies of this gene in a single specimen and targeting a very short region of a multi copy gene would increase a chance for its amplification from a damaged and fragmented DNA of Irish *Meloidogyne* sp. in the old slides.

In this study we showed a historical record of *M. fallax* in Ireland. It is not known which way it was introduced to the unheated glasshouse in the county Cork, either by infected tomato seedlings or by infested soil. Although EPPO (2004) described a direct evidence of the economic importance of *M. fallax* as lacking and obscured compared to its sister species *M. chitwoodi*, the fact that *M. fallax* was present in Ireland in '60s and again recorded in the sport turf in 2011 (Northern Ireland), indicates a continuous risk of introduction of this species in Ireland. Van der Gaag et al. (2011) relied on the matrix statistical model to assess the risk of introduction of *M. fallax* and *M. chitwoodi* into new countries. The outcome of this model showed a high risk of introduction of both species from France, Netherlands, Germany and UK via plant seedlings, dormant bulbs, tubers, tuberous roots, corms, crowns and rhizomes. Furthermore, a coarse soil texture in a combination with Irish climate provides good conditions for the establishment of both species.

Conclusion

To conclude with, observations of the original material of a population of *Meloidogyne* sp. from Ireland and its comparison to other similar *Meloidogyne* spp. indicate that it belongs to *M. fallax*.

Acknowledgement

The authors are sincerely grateful to ir. Evelyn van Heese for the technical support; Alcides Sánchez-Monge for the help with GNU Image Manipulation Program; the National Plant Protection Organization in Wageningen, the Netherlands and a special research fund of Gent University 01N02312, Belgium.

References

- Bowles J, Blair D, McManus DP (1992) Genetic variants within the genus *Echinococcus* identified by mitochondrial DNA sequencing. *Molecular and Biochemical Parasitology* 54(2): 165–174. [https://doi.org/10.1016/0166-6851\(92\)90109-W](https://doi.org/10.1016/0166-6851(92)90109-W)

- Castagnone-Sereno P, Danchin EG, Perfus-Barbeoch L, Abad P (2013) Diversity and evolution of root-knot nematodes, genus *Meloidogyne*: new insights from the genomic era. *Annual Review of Phytopathology* 51: 203–220. <https://doi.org/10.1146/annurev-phyto-082712-102300>
- Chitwood BG (1949) Root-knot nematodes, Part 1. A revision of the genus *Meloidogyne* Goeldi, 1887. *Proceedings of the Helminthological Society of Washington* 16: 90–114.
- Eisenback JD, Hirschmann H (1981) Identification of *Meloidogyne* species on the basis of head shape and stylet morphology of the male. *Journal of Nematology* 13: 413–521.
- Eisenback JD, Triantaphyllou HH (1991) Root-knot nematodes: *Meloidogyne* species and races. In: Nickle WR (Ed.) *Manual of Agricultural Nematology*. Marcel Dekker Inc., New York, 191–274.
- Elling AA (2013) Major emerging problems with minor *Meloidogyne* species. *Phytopathology* 103: 1092–1102. <https://doi.org/10.1094/PHYTO-01-13-0019-RVW>
- Entwistle K (2003) Root-knot nematode infection of creeping bentgrass greens. *Greenkeeper International*.
- EPPO, OEPP/EPPO (2004) EPPO data sheets on quarantine pests. *Meloidogyne fallax*.
- EPPO, OEPP/EPPO (2013) First report of *Meloidogyne fallax* in United Kingdom. 2013/217.
- EPPO, OEPP, EPPO (2009) *Bulletin OEPP/EPPO* 39: 5–17.
- EPPO (2014) PQR – EPPO database on quarantine pests.
- Esser RP (1974) Two permanent mounting methods compared after six years. *Proceedings of the Helminthological Society* 41: 10–13.
- Floyd R, Abede E, Papert A, Blaxter M (2002) Molecular barcode for soil nematode identification. *Molecular ecology* 11: 839–850. <https://doi.org/10.1046/j.1365-294X.2002.01485.x>
- Fourie H, Zijlstra C, McDonald AH (2001) Identification of root-knot nematode species occurring in South Africa using SCAR-PCR technique. *Nematology* 3: 675–680. <https://doi.org/10.1163/156854101753536046>
- Golden AM, O'Bannon JH, Santo GS, Finley AM (1980) Description and some observations of *Meloidogyne chitwoodi* n. sp. (Meloidogynidae), a root knot nematode on potato in the Pacific Northwest. *Journal of Nematology* 12: 319–327.
- Humphreys-Pereira DA, Elling AA (2015) Mitochondrial genome plasticity among species of the nematode genus *Meloidogyne* (Nematoda: Tylenchina). *Gene* 560: 173–183. <https://doi.org/10.1016/j.gene.2015.01.065>
- Hunt DJ, Handoo ZA (2009) Taxonomy, identification and principle species. In: Perry RN, Moens M, Starr JL (Eds) *Root-knot nematodes*. CAB International, 55–88.
- Janssen T, Karssen G, Verhaeven M, Coyne D, Bert W (2016) Mitochondrial coding genome analysis of tropical root-knot nematodes (*Meloidogyne*) supports haplotype based diagnostics and reveals evidence of recent reticulate evolution. *Scientific Reports* 6: 22591. <https://doi.org/10.1038/srep22591>
- Jepson SB (1987) Identification of root-knot nematodes (*Meloidogyne* species). CAB International.
- Karssen G (1996) Description of *Meloidogyne fallax* n. sp. (Nematoda: Heteroderidae), a root-knot nematode from The Netherlands. *Fundamental Applied Nematology* 19: 593–599.
- Karssen G (2002) The plant-parasitic nematode genus *Meloidogyne* Göldi, 1892 (Tylenchida) in Europe. Koninklijke Brill NV, Leiden, the Netherlands.

- Karssen G, Bolk RJ, Van Aelst AC, Van Den Beld I, Kox LFF, Korthals G, Molendijk L, Zijlstra C, Van Hoof R, Cook R (2004) Description of *Meloidogyne minor* n. sp. (Nematoda: Meloidogynidae), a root-knot nematode associated with yellow patch disease in golf courses. *Nematology* 6: 59–72. <https://doi.org/10.1163/156854104323072937>
- Marshall JW, Zijlstra C, Knight KWL (2001) First record of *Meloidogyne fallax* in New Zealand. *Australasian Plant Pathology* 30: 283–284. <https://doi.org/10.1071/AP01033>
- Moore JF (1965) Root-knot eelworm (*Meloidogyne* sp.). Plant Science and Crop Husbandry Division, Dublin, Research Report, 68–69.
- Moore JF (1966) Root-knot eelworm (*Meloidogyne* sp.). Plant Science and Crop Husbandry Division, Dublin, Research Report, 93–94.
- Nobbs JM, Liu Q, Hartley D, Handoo Z, Williamson VM, Taylor S, Walker G, Curran J (2001) First record of *Meloidogyne fallax* in Australia. *Australian Plant Pathology* 30: 373. <https://doi.org/10.1071/AP01060>
- Plantard O, Valette S, Gross MF (2007) The root-knot nematode producing galls on *Spartina alterniflora* belongs to the genus *Meloidogyne*: rejection of *Hypsoperine* and *Spartonema* spp. *Journal of Nematology* 39: 127–132.
- Rubtsova TV, Moens M, Subbotin SA (2005) PCR amplification of a r RNA gene fragment from formalin-fixed and glycerine-embedded nematodes from permanent slides. *Russian Journal of Nematology* 13: 137–140.
- Sledge EB, Golden AM (1964) *Hypsoperine graminis* (Nematoda: Heteroderidae), a new genus and species of plant-parasitic nematode. *Proceedings of the Helminthological Society of Washington* 31: 83–88.
- Siddiqi MR (2000) *Tylenchida parasites of plants and insects*. CABI Publishing, 670 pp. <https://doi.org/10.1079/9780851992020.0000>
- Triantaphyllou AC, Hirschmann H (1997) Evidence of direct polyploidization in the mitotic parthenogenetic *Meloidogyne microcephala*, through doubling of its somatic chromosome number. *Fundamental Applied Nematology* 20: 385–391.
- Van der Gaag DJ, Viaene N, Anthoine G, Ilieva Z, Karssen G, Niere B, Petrova E, Wesemael W (2011) Pest risk assessment for *Meloidogyne chitwoodi*: Test Method 2. *Primaphacie*, 1–60.
- Wesemael WML, Viaene N, Moens M (2011) Root-knot nematodes (*Meloidogyne* spp.) in Europe. *Nematology* 13: 3–16. <https://doi.org/10.1163/13885410X526831>