



OPEN

Analysis of the robustness and dynamics of spin-locking preparations for the detection of oscillatory magnetic fields

Milena Capiglioni[✉], Federico Turco, Roland Wiest & Claus Kiefer

Extracting quantitative information of neuronal signals by non-invasive imaging is an outstanding challenge for understanding brain function and pathology. However, state-of-the-art techniques offer low sensitivity to deep electrical sources. Stimulus induced rotary saturation is a recently proposed magnetic resonance imaging sequence that detects oscillatory magnetic fields using a spin-lock preparation. Phantom experiments and simulations proved its efficiency and sensitivity, but the susceptibility of the method to field inhomogeneities is still not well understood. In this study, we simulated and analyzed the dynamic of three spin-lock preparations and their response to field inhomogeneities in the presence of a resonant oscillating field. We show that the composite spin-lock preparation is more robust against field variations within the double resonance effect. In addition, we tested the capability of the chosen composite spin-lock preparation to recover information about the spectral components of a composite signal. This study sets the bases to move one step further towards the clinical application of MR-based neuronal current imaging.

Neuroscience seeks to understand brain activity and its pathologies but still struggles to extract electrical neuronal information in a non-invasive way. Non-invasive detection methods such as electroencephalogram¹ and magnetoencephalogram² measure electric potential and magnetic fields on the scalp and reconstruct the location of the electric sources. Unfortunately, the sensitivity of these methods is limited for in-depth activity sources^{3,4}. On the other hand, conventional functional magnetic resonance (fMRI) detects T_2 and T_2^* changes generated by blood oxygenation levels on the brain (BOLD contrast)⁵. This technique presents good spatial resolution, but it measures neuronal activity indirectly, and the hemodynamic response function limits its temporal resolution⁶.

Stimulus Induced Rotational Saturation (SIRS) is an MRI-based sequence with the potential to directly detect neuronal activity with sufficient spatial resolution⁷. The SIRS contrast is based on the interaction between the magnetization locked by a spin-lock (SL) pulse and an oscillating magnetic field induced by neuronal activity. Several studies proved the capabilities of the method with simulations and phantom experiments^{7–11}. Even more, the dependence of the contrast with the change of the excitation angle has been proposed as a new method for direct functional connectivity measurements¹².

The susceptibility of the SL preparations to B_0 and B_1 inhomogeneities hinders the further development and clinical application of this approach^{12,13}. However, researchers in the field of $T_{1\rho}$ relaxometry thoroughly studied the use of composite SL pulses to reduce the effect of field imperfections^{14–17}. Furthermore, some researchers within the SIRS community tested and used composite pulses^{8,9,18}. But, to the best of our knowledge, no comprehensive study of the influence of the double resonance effect in combination with field inhomogeneities has been presented. Magnetization dynamics during a spin-lock pulse changes radically in the presence of an oscillating resonant field. Here, we present a simulation model based on rotation matrices that allow us to study the new dynamics and capture the effect of any oscillating field over time. We studied three well known SL preparations, the basic or standard SL pulse (BASL), the rotary echo SL pulse (RESL), and the composite rotary echo SL pulse (CRESL). Using the simulator and phantom experiments, we define the optimal strategy by examining the response of the preparations to field imperfections considering the new dynamics.

Finally, to validate the chosen preparation in more realistic conditions, we studied the filter properties of the preparation in the presence of composite signals. Physiological signals fluctuate in time and are composed of multiple frequencies^{19–21}. In addition, certain pathologies manifest with neuronal activity at specific frequencies.

Institute for Diagnostic and Interventional Neuroradiology, Support Center for Advanced Neuroimaging (SCAN), University of Bern, Freiburgstrasse 16, 3010 Bern, Switzerland. ✉ email: milena.capiglioni@insel.ch

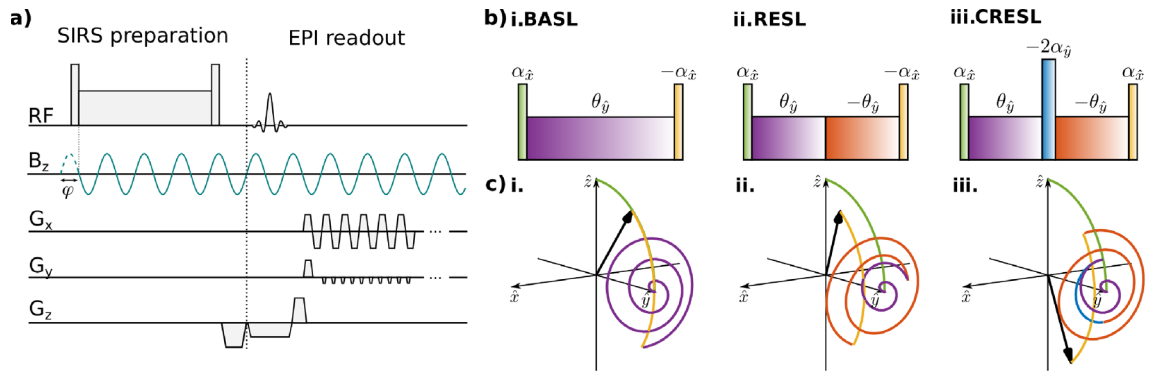


Figure 1. Pulse sequence, SL preparations and magnetization dynamics. **(a)** Pulse sequence diagram for a conventional SIRS preparation (BASL) followed by an echo planar imaging (EPI) acquisition. An exemplary oscillating target field (B_z) is shown, the initial phase (φ) corresponds to the phase at the beginning of the SL pulse. **(b)** RF pulses that define the three SL preparations studied in this work: (i) basic SL preparation (BASL), (ii) rotary echo SL pulse (RESL) and (iii) composite rotary echo SL pulse (CRESL). **(c)** Representative diagram of the magnetization dynamic for the SL preparations showed in **(b)** when in the presence of a resonant oscillating field applied along \hat{z} . The trajectory is color-coded to differentiate the effect of each RF pulse.

For example, high-frequency oscillations (HFOs) are considered markers of the seizure onset zone in epilepsy^{22,23}. This case is noteworthy because non-invasively outlining the seizure onset zone can have a direct impact on patient care quality. Therefore, we consider that the next step to take towards the clinical application of the SIRS sequence is a more realistic signal analysis. The use of a repetitive acquisition of successive measurements with and without SL preparation has previously been proposed²⁴. With this method, the BOLD effect and image artifacts are minimized by dividing the two signals. In the second part of this work, we tested the ability of this acquisition method to reconstruct the frequency distribution of multi-frequency signals.

The purpose of this study is to advance research towards the clinical application of the SIRS technique. First, we define the optimal SL preparation and metric to detect oscillating fields in the presence of field inhomogeneities and second, we analyzed the response of the chosen preparation to composite signals.

Methods

Magnetization dynamics under spin-lock preparations schemes. The dynamics of the magnetization with the BASL preparation in the presence of simple sinusoidal oscillating fields has been analytically described²⁵. However, modulated oscillating fields are more representative of those found in physiological activity. In general, it is not possible to analytically describe these fields, and numerical simulations are the only option. Among the numerical simulation methods, solving differential equations⁹ and stepwise constant rotations as presented in this work, give similar results. Based on previous bibliography in the $T_{1\rho}$ field^{15–17}, where composite and refocusing SL pulses were developed, we decided to adopt the rotation matrix method presented in those works and added the influence of an arbitrary oscillating target field. Figure 1a shows the conventional SIRS sequence formed by a spin-locking pulse followed by a single shot EPI readout. A traditional SL pulse, like the one shown in Fig. 1b(i), consists of three RF pulses. After a tip-down pulse of duration T_{td} , the magnetization in the simple rotating frame ($\hat{x}, \hat{y}, \hat{z}$) is

$$M(T_{td}) = R_{\hat{x}}(-\alpha)M(0). \tag{1}$$

Here $M(0) = [0, 0, M_{0z}]$ is the initial magnetization, and $R_{\hat{x}}(-\alpha)$ represents a matrix rotation around \hat{x} as defined in Supplementary information 1, with α the rotation angle of ideally 90° . Imperfections in the transmitted B_1 field can vary significantly across the sample, deviating α from the ideal value depending on the location \mathbf{r} by $\alpha(\mathbf{r}) = \gamma B_1(\mathbf{r})T_{td}$. The second RF applied along \hat{y} is the SL pulse $B_{SL} = \omega_{SL}/\gamma$, of duration T_{SL} with $\omega_{SL} = 2\pi F_{SL}$ the induced angular frequency. B_{SL} locks the magnetization in the transverse plane, represented by

$$M(T_{td} + T_{SL}) = R_{\hat{y}}(-\theta)M(T_{td}), \tag{2}$$

where $\theta = \omega_{SL}T_{SL}$. In the presence of B_0 inhomogeneities, the magnetization will rotate around the effective field $\mathbf{B}_{eff} = \frac{\omega_{SL}}{\gamma}\hat{y} + \frac{\Delta\omega_0}{\gamma}\hat{z}$ that forms an angle $\beta = \arctan(\frac{\Delta\omega_0}{\omega_{SL}})$ to \hat{y} , where $\Delta\omega_0 = \omega_0 - \omega_{RF}$ is the off-resonant frequency. The effective rotation angle is then given by $\theta_{eff} = \omega_{eff}T_{SL} = \sqrt{\omega_{SL}^2 + \Delta\omega_0^2}T_{SL}$ ^{15,17}. This results in

$$M(T_{td} + T_{SL}) = R_{\hat{x}}(\beta)R_{\hat{y}}(-\theta_{eff})R_{\hat{x}}(-\beta)M(T_{td}). \tag{3}$$

Finally, a tip-up pulse of duration T_{td} tilts the magnetization back to the longitudinal axis, in the same way as Eq. (1) but for a rotation $R_{\hat{x}}(\alpha)$. After preparation, a gradient spoiler in \hat{z} eliminates the remanent transverse magnetization. The spoiler is followed by a slice selective 90° excitation and an echo-planar imaging (EPI) readout, as shown in Fig. 1a. Although a fast single-shot readout is preferred for functional imaging, the acquisition could be replaced by another sequence.

We can now consider the dynamic under the influence of an arbitrary target field $\mathbf{B}_{NC}(t)$ along \hat{z} . In its simplest form, this field is represented by $\mathbf{B}_{NC}(t) = B_{NC} \sin(\omega_{NC}t + \varphi) \hat{z}$, with B_{NC} , ω_{NC} , and φ the amplitude, frequency, and initial phase of the field, respectively. Considering the magnetization direction and the change in the amplitude of the target field constant during each time-step dt , the SL period is represented at each instant τ by a stepwise rotation of the form

$$M(\tau) = \mathbf{R}_{\hat{x}}(\beta'(\tau)) \mathbf{R}_{\hat{y}}(-\omega'_{eff}(\tau)dt) \mathbf{R}_{\hat{x}}(-\beta'(\tau)) M(\tau - dt). \quad (4)$$

where β' and ω'_{eff} are the redefinition of β and ω_{eff} as

$$\beta'(\tau) = \arctan\left(\frac{\Delta\omega_0 + \gamma B_{NC}(\tau)}{\omega_{SL}}\right), \quad (5)$$

and

$$\omega'_{eff}(\tau) = \sqrt{\omega_{SL}^2 + (\Delta\omega_0 + \gamma B_{NC}(\tau))^2}. \quad (6)$$

If the field is in resonance with the induced SL frequency i.e., $\omega_{NC} = \omega_{SL}$, \mathbf{B}_{NC} acts as an excitation pulse and tilts the magnetization away from the SL direction. After the preparation, the drop in the longitudinal magnetization depends on the torque generated by the oscillating target field. We can further generalize Eq. (4) to consider that the target field could be along an arbitrary axis (see Supplementary information 1).

Finally, the magnetization in the presence of relaxation is modified as $M(\tau) = \mathbf{A}M(\tau - dt) + \mathbf{B}$, where the matrices \mathbf{A} and \mathbf{B} represent the effect of the standard T_1 and T_2 relaxation times (see Supplementary information 1). In our implementation, each rotation must be infinitesimal and within each step dt , two relaxations of $dt/2$ are considered before and after the infinitesimal rotation. In this way, Eq. (1) becomes:

$$M(T_{td}) = \prod_{n=1}^{\frac{T_{td}}{dt}} \mathbf{A} [\mathbf{R}_{\hat{x}}(-\gamma B_1 dt) \{ \mathbf{A} M(dt(n-1)) + \mathbf{B} \}] + \mathbf{B}, \quad (7)$$

and Eq. (4) changes to

$$M(T_{td} + T_{SL}) = \prod_{n=1}^{\frac{T_{SL}}{dt}} \mathbf{A}_{\rho} \left[\mathbf{R}_{\hat{x}}(\beta'(\tau)) \mathbf{R}_{\hat{y}}(-\omega'_{eff}(\tau)dt) \mathbf{R}_{\hat{x}}(-\beta'(\tau)) \{ \mathbf{A}_{\rho} M(T_{td} + dt(n-1)) + \mathbf{B}_{\rho} \} \right] + \mathbf{B}_{\rho}, \quad (8)$$

where \mathbf{A}_{ρ} and \mathbf{B}_{ρ} represent the relaxations in the rotating frame of reference (see Supplementary information 1).

We validated the rotation matrices simulator using the comparison with both analytical and numerical models (see Supplementary information 1).

The dynamic response of the magnetization under the BASL preparation in the presence of a resonant oscillating field is shown in Fig. 1c(i).

The RESL preparation divides the SL pulse into two parts with equal duration and opposite phase, as shown in Fig. 1b(ii). This pulse attempts to cancel out the error in the alpha angle generated by B_1 inhomogeneity¹⁴. Figure 1c(ii) illustrates the magnetization dynamics for RESL under the influence of a resonant target field. To simulate this preparation, the sign of $\omega'_{eff}(\tau)$ is inverted in Eq. (8), when $n = \frac{T_{SL}}{2dt}$. The sign change adds a phase dependence to the RESL contrast. Depending on the initial phase, and the relation between T_{SL} and F_{SL} , the distance to the SL axis gained during the first part of the pulse, could be compensated during the second half. We show this effect in more detail in the following sections.

Finally, the CRESL preparation adds a 180° RF pulse along \hat{y} between the two halves of the SL pulse, i.e., when $n = \frac{T_{SL}}{2dt}$ and the last pulse is equal to the tip-down. The 180° pulse compensates for the phase accumulated due to the influence of B_0 inhomogeneities. Figure 1b(iii) shows the pulse sequence, and Fig. 1c(iii) shows the dynamics of the double resonance effect under this preparation. As in RESL, the CRESL contrast is also dependent on the initial phase, however, the response differs due to the delay in time generated by the 180° pulse.

The double rotating system is generally used to show the magnetization dynamics during an SL pulse^{12,13}. We presented this dynamic in Supplementary information 2.

Simulator implementation. The simulator was programmed in MATLAB (R2019b) using the method presented in “Magnetization dynamics under spin-lock preparations schemes” section, together with the rotation and relaxation matrices shown in Supplementary information 1. Parameters that must be given to the simulator related to the sample are the relaxation times of the tissue and the target field as a function of time. Sequence control parameters are F_{SL} , T_{SL} , T_R , T_E , number of slices (always 1 for this work) and repetition number. In this way, the entire sequence time can be simulated, considering relaxation in preparation, readout and waiting times (time between slices, preparations without SL).

Experimental setup. We performed measurements in a 3T whole-body MR scanner (Siemens Medical Solutions, Erlangen, Germany), using a Single-Shot-EPI readout with fixed parameters: $T_E = 29.8$ ms, Matrix size = 64×64 , FOV = 210×210 mm, Bandwidth = 1950 Hz/pixel, and slice thickness = 5 mm. The value of T_R will depend on the selected value of T_{SL} . For the simulations, the relaxation times match the values measured on the

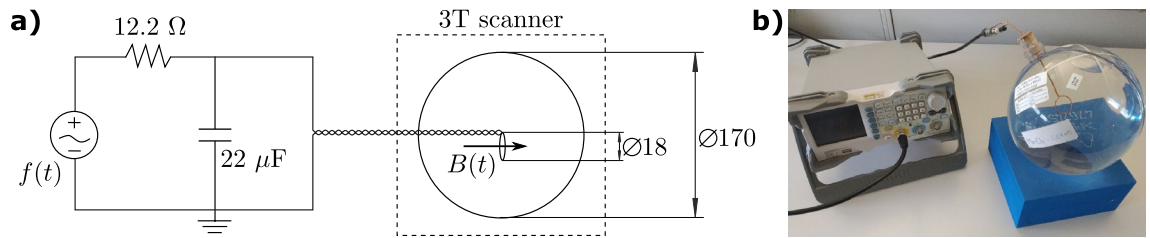


Figure 2. Diagram of the experimental setup. (a) A function generator is connected to a 12.2 Ω resistor in parallel with a 22 nF capacitor to avoid high-frequency coupling. The circuit is connected to a loop coil of isolated copper wire inside a plastic sphere filled with a solution of water and MnCl_2 (0.07 mmol). Diameter measures are in mm. (b) Picture of the phantom connected to the function generator outside the scanner room.

phantom using commercial sequences. $T_1 = 1270$ ms and $T_2 = 200$ ms. We estimated $T_{1\rho}$ using a custom-made sequence that varies the duration of the spin-lock time T_{SL} for a CRESL preparation and fitting the exponential formula $M = M_0 e^{-T_{SL}/T_{1\rho}}$ obtaining $T_{1\rho} = 165$ ms.

Figure 2 shows the experimental setup used in this study. The phantom consists of a copper loop coil in the middle of a 17 cm diameter plastic sphere filled with saline solution to control the relaxation times. We positioned the phantom such that the loop is in the xy plane and the target oscillating field results in the B_0 field direction.

The coil connects to the function generator (*Rigol DG1022Z*) through the circuit shown in Fig. 2a. The generator allows controlling the amplitude, frequency, and initial phase of the output signal. The external trigger of the scanner gives the signal to the generator to start the output. For the experiments with composite signals, we designed them using MATLAB and imported the data files into the generator using a 1024Sa/s firing rate.

RESL and CRESL compensate for the influence that B_1 inhomogeneity has on the excitation angle α . However, the error in the amplitude of the SL pulse is not corrected and this will affect the F_{SL} value. To correct for this effect, we performed a manual calibration of the SL amplitude using the CRESL preparation and applied the fitted correction for each SL pulse amplitude used in this work (more detail on Supplementary information 3).

Analysis of SL preparations. The first set of experiments was designed to compare the performance of the three Spin-lock preparations with respect to initial phase dependence, robustness to field imperfections, and frequency selectivity.

To study the dependence with the initial phase φ , we simulated the sequence in the resonance condition ($\omega_{NC} = \omega_{SL} = 2\pi 90$ Hz) as a function of T_{SL} and φ , for the three preparations shown in Fig. 1b. For each value of T_{SL} moving between 70 and 100 ms in 1 ms steps, φ varies between $[-\pi, \pi]$ in 0.1 rad steps. The simulations did not consider B_0 and B_1 inhomogeneities for this analysis.

To better visualize the phase dependency, we simulated and measured the signal contrast as a function of T_{SL} for random and non-random phases. The presented signal contrast was calculated as the ratio between the signal with and without the oscillating initial field (M/M_0). For random phases, 100 repetitions were taken and averaged for each T_{SL} . For non-random phases, we set the initial phase to 0 and 30 repetitions were acquired and averaged for each point.

To evaluate the robustness of the contrast against B_0 and B_1 imperfections, we calculated the standard deviation of the contrast for all the possible values of the initial phase φ varying between $[-\pi, \pi]$ in 0.1 rad steps. The map consists of the standard deviation for each combination of the field inhomogeneities. We considered B_1 imperfections to deviate the α angle $\pm 5^\circ$ from the desired 90° value (equivalent to a 0.1 ppm variation around the optimal 100 Hz frequency for a 2.5 ms excitation pulse), and B_0 inhomogeneity to vary the off-resonance frequency in a $[-30, 30]$ Hz range.

To evaluate the capability of the SIRS preparations to filter specific frequency components, we simulated and measured the contrast for a fixed $F_{SL} = 90$ Hz while varying the frequency of the target field. $\omega_{NC}/2\pi$ changed between 60 and 120 Hz in 5 Hz steps with amplitude 75 nT and initial random phase. 100 repetitions were acquired and averaged for each point. We repeated this procedure for each T_{SL} in the range of 70 to 100 ms in 5 ms steps. For each value of T_{SL} , we estimated the full-width half maximum (FWHM) and used it as a measure of selectivity of the filter. The simulation was performed for the same parameters, raffling a random phase for each repetition.

CRESL in the presence of composite signals. In this section, we investigated the capability of CRESL to be used as a filter of frequency components when in the presence of composite signals. First, we measured a signal represented by $S(t) = a(t)\sin(2\pi 53t) + (1 - a(t))\sin(2\pi 97t)$ where the piecewise constant parameter $a(t)$ changes its value every 30 s intervals assuming the values $(0, \frac{1}{4}, \frac{1}{2}, \frac{3}{4}, 1)$. Then, the amplitudes of the 97 and 53 Hz components vary every 30 s but the maximum signal amplitude remains constant throughout the experiment. We chose these frequencies because their separation is greater than the bandwidth of the preparation and because their period is not a multiple of T_R , and therefore there is no repeated phases of the oscillation throughout the experiment. The signal was acquired for $F_{SL} = 53$ Hz and $F_{SL} = 97$ Hz, with $T_{SL} = 100$ ms, and $T_R = 1017$ ms, 206 repetitions were performed that account to 210 s. Measurements consist of successive repetitions alternating SL_{on} and SL_{off} acquisitions. SL_{on} acquisitions were described in “Magnetization dynamics under spin-lock preparations schemes” section and SL_{off} acquisitions are a non-prepared EPI readout where the first T_{SL} ms are left empty. The double resonance effect cannot be separated from other factors influencing the

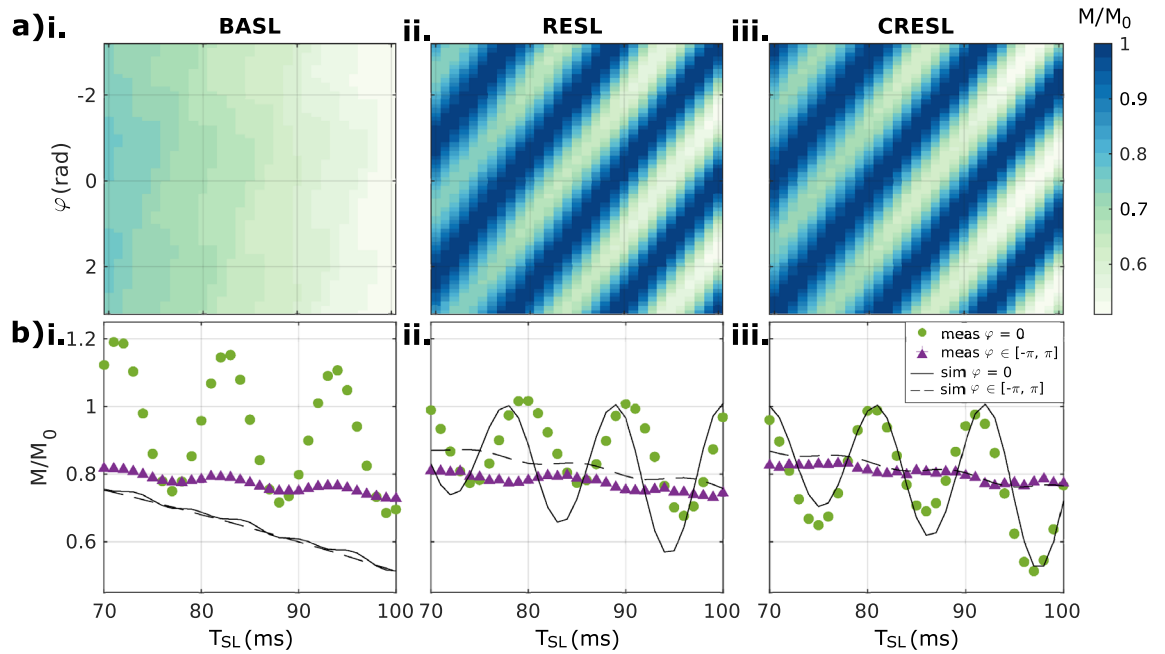


Figure 3. SIRS contrast dependence with phase. **(a)** Simulated contrast amplitude as a function of T_{SL} and the initial phase of the target oscillating field φ for a sinusoidal field in resonance with the SL pulse for (i) BASL, (ii) RESL and (iii) CRESL. **(b)** Measurement and simulation of the contrast in resonance condition as a function of T_{SL} for the cases of triggered ($\varphi = 0$, circles and plain lines) and averaged non-triggered signal (random initial phase, triangles, and dashed lines). $B_{NC} = 75$ nT, $\omega_{NC} = \omega_{SL} = 2\pi 90$ Hz.

contrast (BOLD, image artifacts, physiological noise, etc.). Here, we propose to use the division of the successive SL_{on} and SL_{off} acquisitions to filter out the spurious effects encoded by the common EPI readout. Therefore, after the acquisition, the point-to-point division ($ppd(t)$) of the signals SL_{on} and SL_{off} was calculated. Each frequency component is computed as the standard deviation of the ppd for each time block.

Delineating the seizure onset zone in refractory epilepsy patients is, in our view, the most relevant clinical application for this sequence. This application requires locating that part of the brain having the highest component of frequencies associated with the epileptogenic activity. Therefore, the second experiment tested the sequence capability to reconstruct frequency components of individually acquired signals. Four signals intend to represent four different voxels of the brain. They all consist of a 60 s 0.1 Hz sinusoidal with an amplitude of $x = 81$ nT and a 30 Hz sine of amplitude $x/2$ is added the last 30 s. For signals 2, 3, and 4, a 90 Hz sine is added with amplitude $0.1x$ and divided into blocks of 20, 10, and 2 s, respectively. To calculate the components of the original signal, we applied a bandpass filter of 20 Hz around the target frequency and computed the standard deviation. We measured each signal in time alternating SL_{on} and SL_{off} acquisitions, setting F_{SL} to 30, 60 and 90 Hz, with $T_{SL} = 100$ ms and $T_R = 324$ ms. 186 repetitions were taken to account for the 60 s signal duration. We chose these frequencies to comprehend the influence that slow variations of the signal can have on the detection of small amplitude fast oscillations. Finally, we reconstructed the frequency components for each F_{SL} as the standard deviation of the ppd signal.

Results

Analysis of SL preparations. Figure 3a shows the simulated contrast for the three preparations as a function of T_{SL} and the initial phase of the target field φ . As seen in Fig. 3a(i), BASL is independent of the initial phase and sets the contrast upper limit when all the phases are averaged for a given T_{SL} . Figure 3a(ii, iii) demonstrate the phase dependence for RESL and CRESL. Depending on the T_{SL} value, the opposite phase in the second SL pulse refocuses the accumulated contrast, creating the shown striped pattern. The pattern is shifted between RESL and CRESL due to the delay in M/M_0 generated by the 180° pulse. The average contrast in all the phases for RESL and CRESL is half of that of BASL for a given T_{SL} .

Figure 3b compares the simulated signal without inhomogeneity with measurements for both triggered ($\varphi = 0$) and averaged non-triggered initial phase (φ varying in the range $[-\pi, \pi]$). As shown in Fig. 3b(i), field imperfections induce oscillations in BASL, decreasing its average contrast. For certain values of T_{SL} , the signal in resonance (M) is higher than the signal without resonant field (M_0), generating a contrast greater than one. This counterintuitive result can be explained by analyzing the magnetization dynamics for different field inhomogeneity values (a detailed analysis can be found in Supplementary information 4). B_0 inhomogeneities also influence the RESL contrast, but the theoretical curve qualitatively represents the experimental signal. For CRESL, instead, the signal corresponds best to its theoretical value for both the phase zero and the mean contrast cases.

Given the oscillating behavior showed in Fig. 3, we defined the signal contrast as the standard deviation of all the random phases. Figure 4 shows the variation of the contrast for the three preparations as a function of

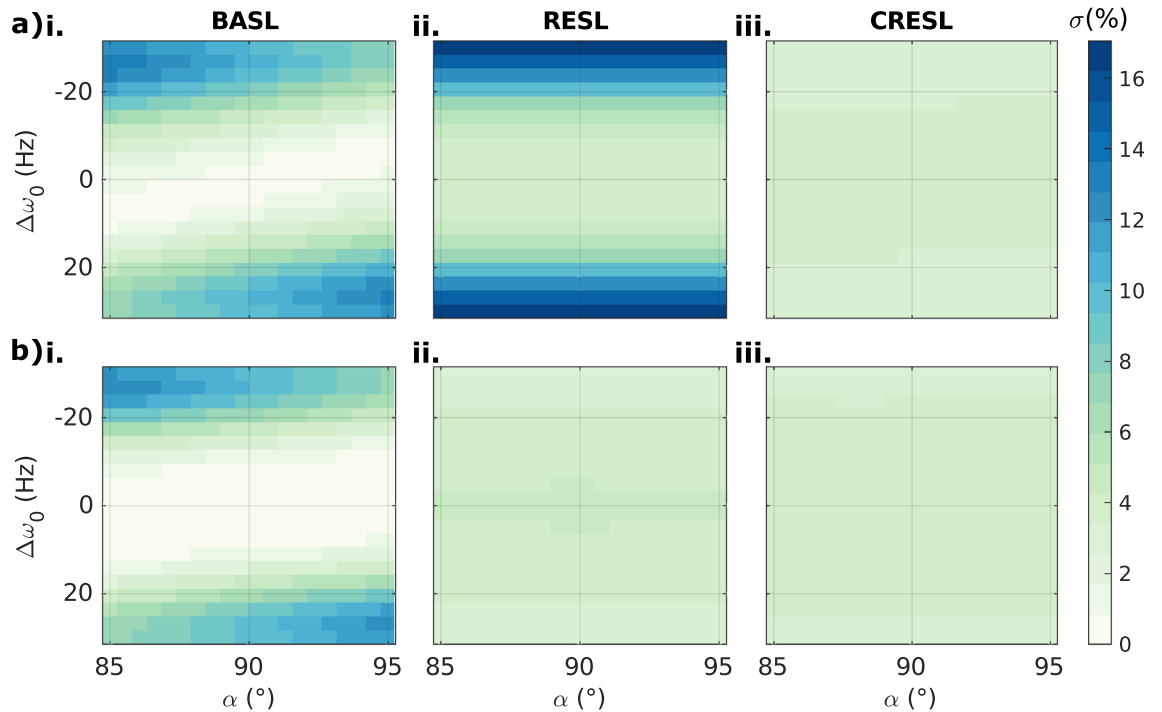


Figure 4. Simulated contrast variation map (signal standard deviation σ) as a function of the excitation angle α ($^{\circ}$) and the frequency offset $\Delta\omega_0$ (Hz) in resonance condition, $\omega_{NC} = \omega_{SL} = 2\pi 90\text{Hz}$. **(a)** For $T_{SL} = 90$ ms: (i) BASL ($\sigma < 13.4\%$), (ii) RESL ($\sigma < 17.5\%$), and (iii) CRESL ($\sigma < 3.7\%$). **(b)** For $T_{SL} = 100$ ms: (i) BASL ($\sigma < 12.8\%$), (ii) RESL ($\sigma < 4.3\%$), and (iii) CRESL ($\sigma < 4.2\%$).

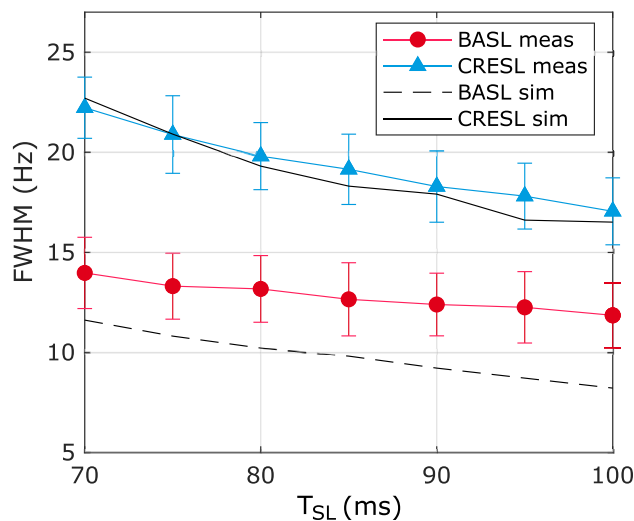


Figure 5. Simulation and measurement of the FWHM of the double resonance effect for BASL and CRESL preparations as a function of T_{SL} . For both cases $B_{NC} = 75$ nT, $\omega_{SL} = 2\pi 90$ Hz.

both B_0 and B_1 inhomogeneities for two different values of T_{SL} when fixing $F_{SL} = 90\text{Hz}$. The maximum std of the contrast is minimum for the CRESL case ($\sigma < 4.2\%$ for both cases). RESL is highly dependent to both B_0 changes and the relationship T_{SL}/F_{SL} ($\sigma < 17.5\%$ for the worst case). BASL is susceptible to both B_0 and B_1 inhomogeneities and therefore diagonal patterns are observed ($\sigma < 13.4\%$ for both cases). The uncertainty of flip angle between 85 and 95 degree corresponds to that of spin-lock frequency between 85 and 95 Hz. When also considering the influence of the spin-lock frequency error, the maximum variation values are 13.1%, 18.3% and 4.2% for BASL, RESL and CRESL respectively. Therefore, this effect is small enough to ignore. This means that CRESL is the most robust against B_0 and B_1 inhomogeneities when using the standard deviation as the featured metric.

Figure 5 shows the simulation and measurement of the FWHM as a function of T_{SL} for CRESL and BASL. For BASL, the simulation without considering inhomogeneities sub-estimates the measured bandwidth. Still,

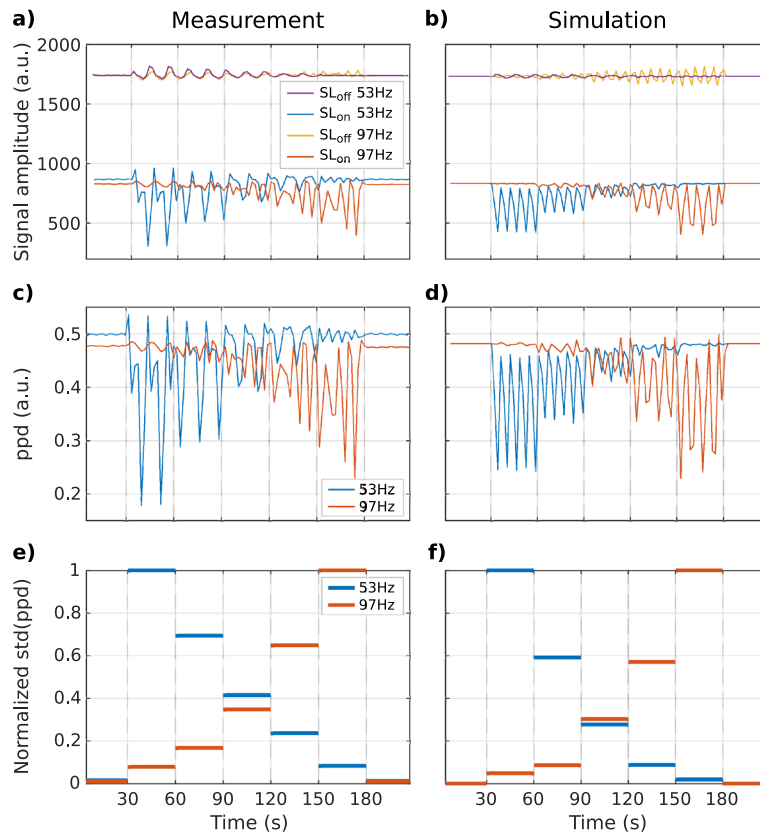


Figure 6. Sequence response to a composite signal. (a) Measured and (b) simulated SL_{on} and SL_{off} signals as a function of time for F_{SL} set at 53 Hz and 97 Hz. (c) Measured and (d) simulated ppd between SL_{on} and SL_{off} as a function of time for the two frequencies used in (a). (e) Measured and (f) simulated normalized frequency component every 30 s block.

it remains lower than the CRESL case for the entire T_{SL} range by about 10 Hz. The FWHM diminishes when increasing T_{SL} for both preparations, i.e., the longer the preparation time, the higher the frequency selectivity. Due to hardware constraints, $T_{SL} = 100$ ms is the maximum allowed value, setting the bandwidth to 12 Hz and 17 Hz for BASL and CRESL, respectively. For this T_{SL} , and with the minimum possible T_R value, the specific absorption rate (SAR) limits the highest usable F_{SL} to 220 Hz (for more details in SAR estimation see Supplementary information 5).

Measurements of composite signals. Figure 6a shows the measurement of the SL_{on} and SL_{off} signals in time for F_{SL} set to 53 and 97 Hz. The signal behavior is qualitatively well represented by the simulation shown in Fig. 6b. Figure 6c shows the point-to-point division (ppd) between the signals on and off, and Fig. 6d the corresponding simulation. Finally, Fig. 6e, f present the measured and simulated normalized components of the two target frequencies. The average error for the normalized std(ppd) between the simulated and measured signal is of 8.6%. This value does not consider the intervals that were normalized to 1. In addition, attempts to fit the curve with the simulator using the initial phase and SL frequency as fit parameters failed to converge.

Figure 7 shows the response of the CRESL sequence to the acquisition of individual signals with different frequency components. Panel (a) shows the input signals and panel (b) the frequency components corresponding to each signal. Panel (c) shows the components reconstructed from the measurement and panel (d) from the simulation. The 0.1 Hz ripple appears in the measured signal even if the F_{SL} is 30, 60 or 90 Hz, resulting in a higher ratio in each channel. In the same way, signal amplitude is higher than expected at 60 Hz. From the time-acquired signal (see Supplementary information 6), it is seen that such erroneous detection is caused by traces of the 0.1 Hz oscillation, that decrease for increasing F_{SL} . Nevertheless, if the signals represent different volumes in an image, the method can correctly locate the volume with the highest amount of 90 Hz, despite its small amplitude.

Discussion

We found that the acquisition of the SIRS signal in time will have an oscillating behavior and the reason behind the oscillations depends on the type of SL preparation. According to Fig. 3a, the rotary preparations will oscillate due to the phase of the oscillating field and the relation between T_{SL} and F_{SL} , as was previously suggested by¹⁸. In addition, the theoretical BASL signal does not depend on the phase and presents the contrast upper limit

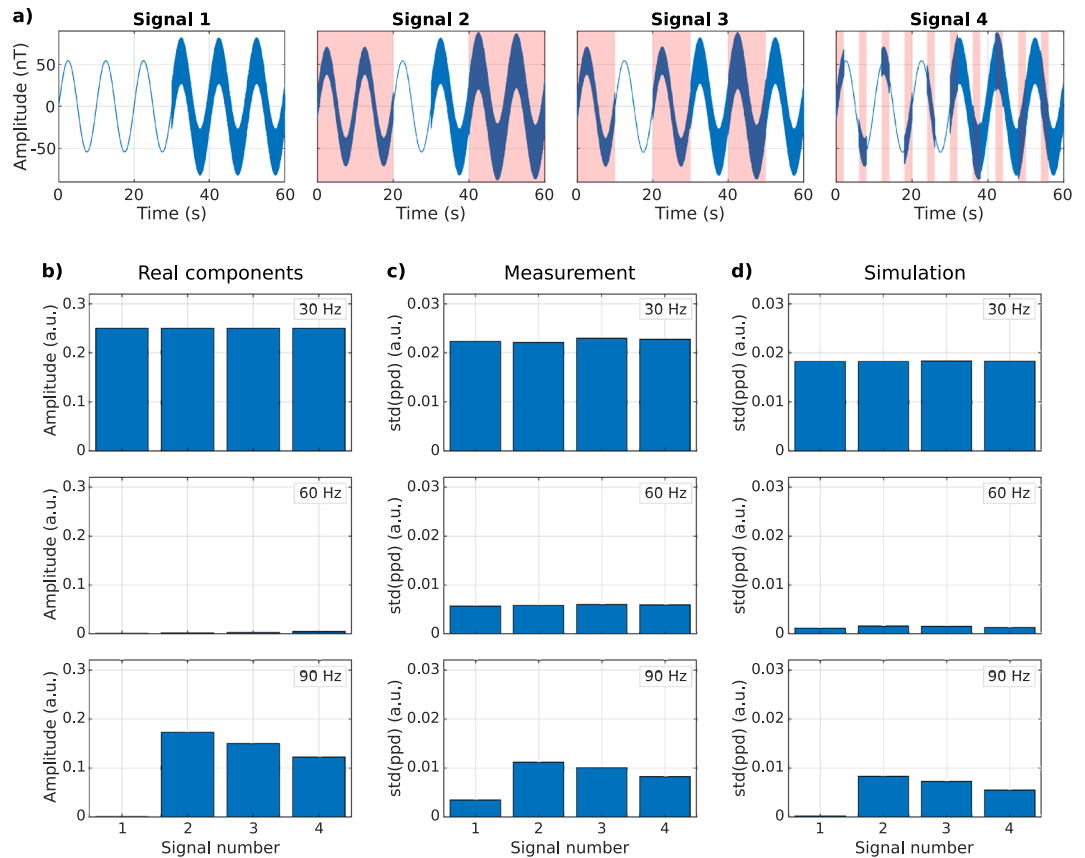


Figure 7. Component reconstruction of individual signals. (a) Input signals composed of a 0.1 Hz with a 30 Hz sine the last 30 s. A 90 Hz sine is added in 20, 10, and 2 s blocks for signals 2, 3, and 4 respectively, the shaded areas indicate the location of the 90 Hz wave. (b) Frequency components of the signals showed in (a) at 30, 60 and 90 Hz. (c) Components reconstructed from measurement with F_{SL} fixed at 30, 60 and 90 Hz. (d) Frequency components reconstructed from the simulation with the same parameters as in the measurement.

when averaging in all the possible phases. However, Fig. 3b shows that in practice, B_0 and B_1 inhomogeneities induce oscillations also for the BASL approach, deviating the contrast from the theoretical value. RESL has a mixed behavior, being dependent on B_0 and the initial phase of the oscillating field and finally, CRESL oscillates exclusively due to the initial phase.

The optimal contrast to locate oscillating fields should depend solely on the double resonance effect and not on the spatial variation of the B_0 and B_1 fields. Given the unavoidable oscillating nature of the contrast, and as it was previously suggested for the SLOE approach^{18,26}, we adopted the standard deviation as a metric to quantify the influence of the target field. Within this metric, according to Fig. 4, CRESL is the most robust preparation even within the double resonance dynamic, which further supports the idea firstly proved in the field of $T_{1\rho}$ relaxation^{15,16}. On the other hand, RESL still depends on the heterogeneities of B_0 (Fig. 4a(ii)), and for certain combinations of T_{SL} and F_{SL} , RESL presents the highest variability. Therefore, we have discarded it in the following analysis.

The analysis of the bandwidth presented in Fig. 5 shows that BASL is in average more selective than CRESL for about 10 Hz in the studied range. This would indicate that BASL can better separate closer frequency components of a composite signal. In addition, Fig. 5 shows that the bandwidth can be reduced by increasing T_{SL} . Nevertheless, the Specific Absorption Rate (SAR) and the scanner's hardware constraints will limit the highest T_{SL} value. To avoid these limitations, T_R must grow, but this means lowering the temporal resolution when signals are acquired in time. Therefore, the trade-off between increasing frequency selectivity and lowering the temporal resolution must be considered for future applications (further SAR analysis is presented in Supplementary information 5).

Based on the results of the analysis of the SL preparation, we decided to adopt the CRESL method due to its robustness. Using this preparation, we tested the response to composite signals by acquiring the signal over time. When analyzing a signal that varies the amplitude of its frequency components in a step-wise manner over time, the simulator and the measured signal showed the same empirical behavior, as is shown in Fig. 6a, b. However, there are several differences between them in terms of waveform and the number of peaks and the reconstructed components showed in Fig. 6e, f present a variation of 8.6%. Furthermore, a measurement fit using the SL frequency and the initial phase of the field as free parameters failed to converge. Although this

analysis is limited to a qualitative evaluation only, both ppd signals showed changes in amplitude that represent the expected changes in the ratios of each block.

Our last experiment aimed to test the sequence capability to reconstruct frequency components of individually acquired signals without including prior information during post-processing. As shown in Fig. 7, the high amplitude of the low frequency variation induces a detection despite not being in resonance (see also Supplementary information 6). This effect was not seen in the simulator. We hypothesize that this effect is because the simulator does not consider the influence of the sequence during image acquisition, which affects both the acquisition with and without SL. This reveals a limitation of the proposed ppd metric. The point-to-point division of the signals on and off is designed to eliminate artifacts detected in the readout part of the sequence, however, those artifacts will only be filtered out when they are either static or vary slower than $2T_R$ (time it takes to acquire two consecutive on and off signals). Despite this, the proportions shown follow the same behavior as the frequency components. The signal manages to reconstruct which channel has the highest amount of high-frequency component. This proof of principle experiment is promising for the application of this sequence to create a map where each pixel amplitude represents the activation at a given frequency. It also shows that it is necessary to make the simulator more complex to include the effect of image acquisition, as has been previously proposed²⁷.

In summary, there were two main findings in this work. First, the double resonance signal is oscillatory for the three studied preparations. From the analysis of these oscillations, it was found that CRESL is the most robust against field inhomogeneities when using the std(ppd) as a metric. Second, the ppd signal can separate and estimate the amplitude of frequency components within individually acquired composite signals. However, there are two strong limitations of this method. The first one, common to the three SL preparations, is that the susceptibility of the SL amplitude to B_1 is countered with the SL calibration but not corrected. This calibration requires extra measurements. The second one is that multiples acquisitions are necessary for a reliable calculation of the std(ppd). This in turn requires that the resonant oscillating field is present during sufficiently long periods of time. This would require the analysis of more realistic signals to evaluate the clinical usefulness. These results suggest that the metric and preparation studied can be used in future research for the characterization of physiological signals.

Conclusions

We investigated the magnetization dynamics of three Spin-lock preparations in the presence of a resonant oscillating field and characterized the influence of field inhomogeneities. By simulations and phantom experiments, we found that all three spin-lock preparations exhibit an oscillating contrast as a function of time. Due to the oscillating behavior, we used the standard deviation of the signal as a metric to quantify the influence of the target field. We showed the std metric within the CRESL preparation is the most robust against field inhomogeneities even in the presence of the double resonance effect.

By acquiring composite signals with the chosen CRESL preparation, we found that it is possible to distinguish the frequency components of individual signals composed of multiple frequencies. These results indicate that the CRESL-prepared SIRS sequence has the potential to be used for the detection and localization of oscillating fields with frequencies associated with specific pathologies. In the future, we aim to assess the detection limit of the presented methods under realistic physiological and pathological conditions.

Data availability

Simulation source codes and data can be shared upon reasonable request to M.C.

Received: 17 February 2022; Accepted: 23 September 2022

Published online: 10 October 2022

References

1. Michel, C. M. & Murray, M. M. Towards the utilization of EEG as a brain imaging tool. *Neuroimage* **61**, 371–385 (2012).
2. Hämäläinen, M., Hari, R., Ilmoniemi, R. J., Knuutila, J. & Lounasmaa, O. V. Magnetoencephalography theory, instrumentation, and applications to noninvasive studies of the working human brain. *Rev. Mod. Phys.* **65**, 413–497 (1993).
3. Barkley, G. L. & Baumgartner, C. MEG and EEG in epilepsy. *J. Clin. Neurophysiol.* **20**, 163–178 (2003).
4. Ahlfors, S. P., Han, J., Belliveau, J. W. & Hämäläinen, M. S. Sensitivity of MEG and EEG to source orientation. *Brain Topogr.* **23**, 227–232 (2010).
5. Ogawa, S., Lee, T. M., Kay, A. R. & Tank, D. W. Brain magnetic resonance imaging with contrast dependent on blood oxygenation. *Proc. Natl. Acad. Sci.* **87**, 9868–9872 (1990).
6. Logothetis, N. K. What we can do and what we cannot do with fMRI. <https://doi.org/10.1038/nature06976>.
7. Witzel, T., Lin, F. H., Rosen, B. R. & Wald, L. L. Stimulus-induced Rotary Saturation (SIRS): A potential method for the detection of neuronal currents with MRI. *Neuroimage* **42**, 1357–1365 (2008).
8. Halpern-Manners, N. W., Bajaj, V. S., Teisseyre, T. Z. & Pines, A. Magnetic resonance imaging of oscillating electrical currents. <https://doi.org/10.1073/pnas.1003146107/-/DCSupplemental>.
9. Sheng, J. *et al.* A comprehensive study of sensitivity in measuring oscillatory magnetic fields using rotary saturation pulse sequences. *Magn. Reson. Imaging* **34**, 326–333 (2016).
10. Ueda, H., Ito, Y., Oida, T., Taniguchi, Y. & Kobayashi, T. Detection of tiny oscillatory magnetic fields using low-field MRI: A combined phantom and simulation study. *J. Magn. Reson.* **319**, 106828 (2020).
11. Nagahara, S., Ueno, M. & Kobayashi, T. Spin-lock imaging for direct detection of oscillating magnetic fields with MRI: Simulations and phantom studies. *Adv. Biomed. Eng.* **2**, 63–71 (2013).
12. Ito, Y., Ueno, M. & Kobayashi, T. Neural magnetic field dependent fMRI toward direct functional connectivity measurements: A phantom study. *Sci. Rep.* **10** (2020).
13. Sogabe, T., Ueda, H., Ito, Y., Taniguchi, Y. & Kobayashi, T. Dependence of stimulus-induced rotary saturation on the direction of target oscillating magnetic fields: A phantom and simulation study. *J. Magn. Reson.* **321**, 106849 (2020).
14. Charagundla, S. R., Borthakur, A., Leigh, J. S. & Reddy, R. Artifacts in T1ρ-weighted imaging: Correction with a self-compensating spin-locking pulse. *J. Magn. Reson.* **162**, 113–121 (2003).

15. Witschey, W. R. T. *et al.* Artifacts in T1 ρ -weighted imaging: Compensation for B1 and B0 field imperfections. *J. Magn. Reson.* **186**, 75–85 (2007).
16. Wáng, Y.-X.J. *et al.* T1 ρ magnetic resonance: basic physics principles and applications in knee and intervertebral disc imaging. *Quant. Imaging Med. Surg.* **5**, 858–85885 (2015).
17. Yuan, J. *et al.* Quantification of T1 ρ relaxation by using rotary echo spin-lock pulses in the presence of B0inhomogeneity. *Phys. Med. Biol.* **57**, 5003–5016 (2012).
18. Jiang, X. *et al.* Detection of subnanotesla oscillatory magnetic fields using MRI. *Magn. Reson. Med.* **75**, 519–526 (2016).
19. Gonzalez Andino, S. L. *et al.* Measuring the complexity of time series: An application to neurophysiological signals. *Hum. Brain Mapp.* **11**, 46–57 (2000).
20. Buzsáki, G., Anastassiou, C. A. & Koch, C. The origin of extracellular fields and currents—EEG, ECoG, LFP and spikes. *Nat. Rev. Neurosci.* **2012**(13), 407–420 (2012).
21. Wang, X. J. Neurophysiological and computational principles of cortical rhythms in cognition. *Physiol. Rev.* **90**, 1195 (2010).
22. Khosravani, H. *et al.* Spatial localization and time-dependant changes of electrographic high frequency oscillations in human temporal lobe epilepsy. *Epilepsia* **50**, 605–616 (2009).
23. Charupanit, K., Sen-Gupta, I., Lin, J. J. & Lopour, B. A. Amplitude of high frequency oscillations as a biomarker of the seizure onset zone. *Clin. Neurophysiol.* **131**, 2542–2550 (2020).
24. Kiefer, C., Abela, E., Schindler, K. & Wiest, R. Focal Epilepsy: MR imaging of nonhemodynamic field effects by using a Phase-cycled Stimulus-induced Rotary saturation approach with Spin-Lock preparation. *Radiology* **280**, 237–243 (2016).
25. Ueda, H. *et al.* Dynamics of magnetization under stimulus-induced rotary saturation sequence. *J. Magn. Reson.* **295**, 38–44 (2018).
26. Coletti, C., Domsch, S., Vos, F. & Weingartner, S. Functional MRI of neuro-electro-magnetic oscillations: Statistical processing in the presence of system imperfections. In *Proceedings of the 2020 IEEE EMBS Conference on Biomedical Engineering and Sciences, IECBES 2020* 172–177 (2021). <https://doi.org/10.1109/IECBES48179.2021.9398751>.
27. Ueda, H., Ito, Y., Oida, T., Taniguchi, Y. & Kobayashi, T. Magnetic resonance imaging simulation with spin-lock preparations to detect tiny oscillatory magnetic fields. *J. Magn. Reson.* **324**, 106910 (2021).

Acknowledgements

This study was supported by the Swiss National Science Foundation (SNSF) within the project: Predict and Monitor Epilepsy After a First Seizure: The Swiss-First Study (SNSF, CRSII5-180365, PI Roland Wiest), the Kernen-Fonds für Epileptische and the Schweizerische Epilepsieliga Forschungsgpreis 2018 (Swiss league against epilepsy). We thank Hans Slotboom, Guodong Weng and Andreas Federspiel (Institute for Diagnostic and Interventional Neuroradiology, Support Centre for Advanced Neuroimaging (SCAN), University of Bern, Bern, Switzerland) for their essential discussion of the work. We also thank Regina Reissmann (Biomedical analyst, NEUR, Inselspital, Bern) and Thierry Rumo (Medical technician, DT, Inselspital, Bern) for the technical help in the implementation of the phantom.

Author contributions

All authors conceived the idea of this work. M.C. designed the experiments, implemented the simulations, and wrote the manuscript. M.C. and F.T. performed the measurements and analyzed the data. C.K. and R.W. supervised this study. All authors provided discussion and reviewed the manuscript.

Competing interests

The authors declare no competing interests.

Additional information

Supplementary Information The online version contains supplementary material available at <https://doi.org/10.1038/s41598-022-21232-1>.

Correspondence and requests for materials should be addressed to M.C.

Reprints and permissions information is available at www.nature.com/reprints.

Publisher's note Springer Nature remains neutral with regard to jurisdictional claims in published maps and institutional affiliations.



Open Access This article is licensed under a Creative Commons Attribution 4.0 International License, which permits use, sharing, adaptation, distribution and reproduction in any medium or format, as long as you give appropriate credit to the original author(s) and the source, provide a link to the Creative Commons licence, and indicate if changes were made. The images or other third party material in this article are included in the article's Creative Commons licence, unless indicated otherwise in a credit line to the material. If material is not included in the article's Creative Commons licence and your intended use is not permitted by statutory regulation or exceeds the permitted use, you will need to obtain permission directly from the copyright holder. To view a copy of this licence, visit <http://creativecommons.org/licenses/by/4.0/>.

© The Author(s) 2022