







Sequencing of a central nervous system tumor demonstrates cancer transmission in an organ transplant

Marie-Claude Gingras^{1,2} , Aniko Sabo¹ , Maria Cardenas¹, Abbas Rana³, Sadhna Dhingra⁴, Qingchang Meng¹, Jianhong Hu¹, Donna M Muzny¹, Harshavardhan Doddapaneni¹, Lesette Perez¹, Viktoriya Korchina¹ , Caitlin Nessner¹, Xiuping Liu¹, Hsu Chao¹, John Goss³, Richard A Gibbs¹ 

Four organ transplant recipients from an organ donor diagnosed with anaplastic pleomorphic xanthoastrocytoma developed fatal malignancies for which the origin could not be confirmed by standard methods. We identified the somatic mutational profiles of the neoplasms using next-generation sequencing technologies and tracked the relationship between the different samples. The data were consistent with the presence of an aggressive clonal entity in the donor and the subsequent proliferation of descendent tumors in each recipient. Deleterious mutations in *BRAF*, *PIK3CA*, *SDHC*, *DDR2*, and *FANCD2*, and a chromosomal deletion spanning the *CDKN2A/B* genes, were shared between the recipients' lesions. In addition to demonstrating that DNA sequencing tracked a donor/recipient cancer transmission, this study established that the genetic profile of a donor tumor and its potential aggressive phenotype could have been determined before transplantation was considered. As the genetic correlates of tumor invasion and metastases become better known, adding genetic profiling by DNA sequencing to the data considered for transplant safety should be considered.

DOI 10.26508/lsa.202000941 | Received 20 October 2020 | Revised 9 July 2021 | Accepted 12 July 2021 | Published online 22 July 2021

Introduction

Although there has been a steady increase over the last decade in organ donation from deceased donors, there is still a significant discrepancy between organ availability and demand. For example, 32,321 recipients received organs from 11,870 donors in 2019, but 11,702 patients were removed from the transplant list because they died (5,604) or became too ill to qualify for a transplant (6,098). As of 11 October 2020, there were 119,465 patients remaining on the waiting list (<https://optn.transplant.hrsa.gov/data/view-data-reports/national-data/>). For this reason, donors deceased after cancer of the central nervous system (CNS) are considered for donation, representing 0.3% of the donor pool.

Transplantation of organs from a donor with a known malignancy carries potential risks of cancer transmission to immunosuppressed recipients. These risks vary depending on factors such as the type of tumor, the history of the malignancy and the treatment received. Guidelines on the safety of organs for transplantation have therefore been issued, based on several published studies and reports from organ sharing registries of different countries (<https://www.edqm.eu/en/guide-quality-and-safety-organs-transplantation>).

In general, primary tumors from the CNS rarely disseminate outside the cranial cavity (incidence of 0.4–2.3% [Pasquier et al, 1980]) and those that metastasize are predominately of aggressive histological types such as glioblastoma multiforme (GBM) and medulloblastoma (Cavaliere & Schiff, 2004). However, cases of extracranial metastasis from lower grade tumors to the lungs, pleura, cervical lymph nodes, bone, liver, and intra-thoracic and intra-abdominal lymph nodes have been reported (Liwnicz & Rubinstein, 1979; Pasquier et al, 1980; Hoffman & Duffner, 1985). Several risk factors could influence dissemination, such as ventriculo-peritoneal shunts and chemo or radiotherapy (Cavaliere & Schiff, 2004). Consequently, transmission through transplantation of an organ with undetected metastasis has been known to occur (Lefrancois et al, 1987; Ruiz et al, 1993; Colquhoun et al, 1994; Jonas et al, 1996; Bosmans et al, 1997; Frank et al, 1998; Detry et al, 2000; Buell et al, 2001; Armanios et al, 2004; Collignon et al, 2004; Morath et al, 2005; Kashyap et al, 2009; Ison & Nalesnik, 2011; Warrens et al, 2012; Zhao et al, 2012; Nauen & Li, 2014), and the risk from all histological types of CNS malignancy has been estimated to be 1.5% (Morse et al, 1990; Watson et al, 2010) (www.odt.nhs.uk/). In such cases, the origin of transmission is confirmed by histology and the analysis of markers previously detected in the donor lesion.

In the last decade, next-generation sequencing (NGS) has been extensively used to characterize several tumor types and identify genes driving tumor aggressiveness in studies such as The Cancer Genome Atlas Program (TCGA) and International Cancer Genome Consortium. With the accumulation of these data, the role of genes, and the impact of their mutations, deletions, and amplifications are

¹Human Genome Sequencing Center, Department of Molecular and Human Genetics, Baylor College of Medicine, Houston, TX, USA ²Michael E. DeBakey Department of Surgery, Baylor College of Medicine, Houston, TX, USA ³Abdominal Transplant Center, Michael E. DeBakey Department of Surgery, Baylor College of Medicine, Houston, TX, USA ⁴Department of Pathology, Baylor College of Medicine, Houston, TX, USA

Correspondence: mgingras@bcm.edu

becoming more precisely defined. Present studies are integrating various data types and are focusing on molecular relationships across cancer types to explore clinical action ability in cancer treatment (Hoadley et al, 2018). However, the potential of NGS in establishing the safety of transplant from donor with CNS cancers has not yet been investigated.

We report a case of a young organ donor diagnosed with anaplastic pleiomorphic xanthoastrocytoma (PXA) and multiple organ recipients who developed aggressive neoplasms shortly after transplantation (Fig 1). The newly developed tumors had similar morphology but lacked glial and neural markers characterizing the donor lesion, raising doubt on their origin. This prompted the following questions: Can the origin of the recipients' lesions be unequivocally determined by identifying the mutational profile of the neoplasms using the NGS technology and comparative genomic analysis? Further, can this study encourage the utilization of NGS based methods to reduce the risk of cancer transmission, following transplantation?

Results

Patients

Clinical data variables including gender, age, clinical events, operative procedure, and survival time, and cytological and pathological finding are presented in Tables 1 and S1, respectively.

Donor

The donor was a young male who at the age of 15 yr and a half had two massive spontaneous hemorrhages in a 2-mo period. No tumor was detected at the time of the first hemorrhage, but magnetic resonance imaging performed 47 d after the second hemorrhage showed a large underlying tumor. Surgery was performed to evacuate the hematoma and a fragment of the tumor was collected. 10 d later, a subtotal tumor resection was performed and diagnosed as anaplastic pleiomorphic xanthoastrocytoma (PXA). Cytology revealed epithelioid and spindle-shaped neoplastic cells with large, oval nuclei and glassy cytoplasm. A massive regrowth was once again resected 56 d later and the tumor classification was upgraded from a

Grade II to a Grade III progressive astrocytoma. The tumor tested positive for *BRAF* V600E mutation by immunohistochemistry. The patient was administered an oral chemotherapy regimen consisting of dabrafenib and trametinib (inhibitors of the associated enzyme B-Raf and the mitogen-activated protein kinase [MEK] pathway which plays a role in the regulation of cell growth), temozolomide (alkylating agent used as a second-line treatment for astrocytoma), and palliative radiation. The patient died 346 d after the first diagnosis of cancer was established. Computed tomography axial scans of the chest, abdomen, and pelvis without intravenous contrast detected no signs of malignancy. His liver, kidneys, pancreas, and lungs were donated to four recipients.

Liver recipient (LR)

The liver recipient was a 30-yr-old female diagnosed with Budd-Chiari syndrome and with a pathogenic *JAK2* V617F (c.G1849T) variant. A liver biopsy performed 56 d after transplant identified pleomorphic malignant cells with abundant eosinophilic cytoplasm and marked nuclear atypia including prominent nucleoli but negative for glial marker (Fig 2A–C). The recipient died 85 d after transplant. At autopsy, the liver showed several hepatic lesions (Fig 2D) described as necrotic malignant pleomorphic neoplasms and several peritoneal metastases were observed spreading beyond the transplanted organ.

Kidney recipient (KR)

The KR was a 33-yr-old male with a history of lung adenocarcinoma and pulmonary metastatic disease. A graft nephrectomy was performed 3 mo after transplant because of the detection of malignancy. The neoplasm was characterized by cells with large vesicular nuclei with coarse chromatin and prominent nucleoli, abundant eosinophilic cytoplasm, and morphology that ranged from spindle to rounded and epithelioid. Progressive omental and mesenteric carcinomatosis was observed by computed tomography scan 15 d after the nephrectomy. The patient survived and was still alive 2 yr later.

Kidney and pancreas recipient (KPR)

The kidney and pancreas recipient was a 55-yr-old male with a past medical history of end-stage renal disease due to type I diabetes

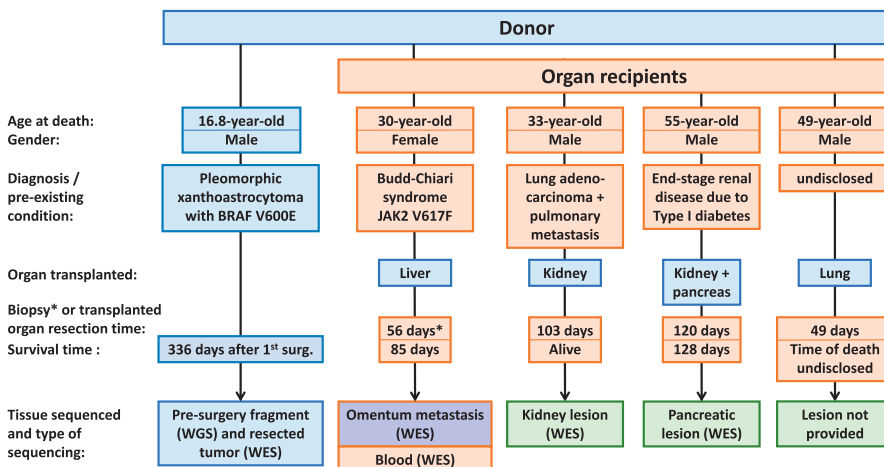


Figure 1. Case study.

Clinical data variables for the donor and organ recipients, sample availability, and type of sequencing performed.

Table 1. Clinical information.

	Age (yr)	Gender	Event timeline (d)	Survival (d)
Donor	15.5	male		
Craniotomy with evacuation of left temporal hematoma			-132	
Second hemorrhage			-59	
Hematoma evacuation, tumor fragment			-10	
Craniotomy, brain tumor subtotal resection (debulking)			0	
Craniotomy, brain tumor 2nd resection (debulking)			56	
Death	16.8		336	
Liver recipient	30	female		85
Liver biopsy			56	
Kidney recipient	33	male		—
Nephrectomy			103	
Kidney pancreas recipient	55	male		128
Nephrectomy and a pancreatectomy with resection of the adjacent duodenum, an omentectomy, and biopsies of peritoneal and mesenteric nodules			120	
Lung recipient	49	male		not disclosed
Right upper lobe lesion positive for <i>BRAF</i> mutation			49	

mellitus. 4 mo after transplantation, a graft nephrectomy and a graft pancreatectomy with resection of the adjacent duodenum, an omentectomy, and biopsies of peritoneal and mesenteric nodules were performed and revealed extensive peritoneal carcinomatosis. Pathology identified a high-grade malignant neoplasm with epithelioid, rhabdoid, and spindle-cell features populating all examined tissues. The patient died 128 d after transplant.

Lung recipient

The lung recipient was a 49-yr-old male who developed a *BRAF* V600E-positive bronchiogenic carcinoma after transplantation and died. No further information could be obtained.

The samples available for the study were from the donor hematoma evacuation surgery (tumor fragment [TF]) and the first resection surgery (resected tumor [RT]), a blood (LR-B) and an omentum

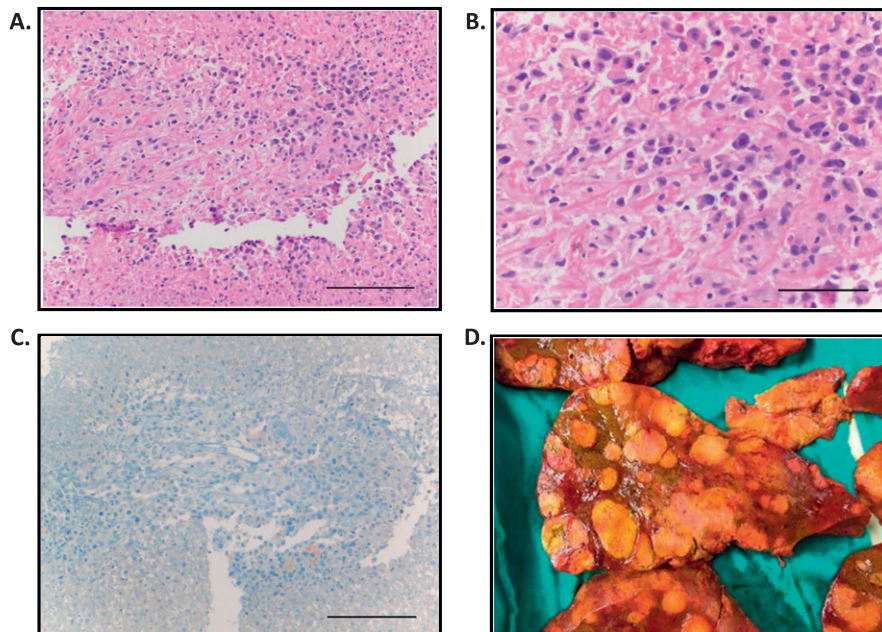


Figure 2. Liver recipient.

(A, B, C) Needle biopsy of liver mass: (A) Small focus of viable tumor surrounded by necrosis. Hematoxylin and eosin stain, magnification scale: 180 μ m. (B) Viable tumor shows epithelioid morphology with pleomorphism. The tumor cells have high nuclear to cytoplasmic ratio with small to moderate amount of cytoplasm. The nuclei show large prominent nucleoli. Hematoxylin and eosin stain, magnification scale: 90 μ m. (C) Glial fibrillary acidic protein negative immunostaining (appropriate positive and negative controls were evaluated). Magnification scale: 180 μ m. (D) Transversal cut of the liver showing multiple hepatic lesions.

metastasis (LR-Om) samples from the liver recipient, a kidney tumor sample from the KR, and a pancreas sample from the kidney and pancreas recipient.

Histology, morphology, and immunohistochemistry staining analyses

The cellular morphology of the recipient tumors shared similar features to those of the donor tumor (Fig 2A and B and Table S1). However, glial and neural markers (glial fibrillary acidic protein, S100, or synaptophysin) positively expressed by the donor cells were undetected in the recipient lesions, indicating a possible non glial origin of these tumors (Fig 2C and Table S1). For this reason, several markers were independently tested for each recipient lesion by their respective point of care team to determine their cellular origin. Staining was negative for markers of liver, renal, pancreatic, and lung carcinoma as well as other tumor types including leukemia and lymphoma. A striking difference in the Ki-67 labeling index was also noticeable between the donor tumor and the recipient liver (10% average versus 70%), indicating the high proliferative activity of the latter.

Tumor lineage

The genetic profiles of the tumors were used to track the lineage from the organ donor, to the participants. The genetic profile of a tumor includes both the DNA of the germline of the affected individual and the somatic mutations acquired over the development and expansion of the cancer. The germline sequence includes both common polymorphisms found in the general population and some rare and/or unique variation that may be specific to this individual. To specifically identify the somatic profile of a tumor, these germline variants, identified by sequencing the individual normal tissue (such as blood), must be subtracted from the tumor sequence. Fig 3A illustrates such an idealized study design for the analysis of tumors in transplant cases in which the donor and the recipient germlines are both known. In some cases, not all tissues will be readily available and tumor samples mixed with non-malignant cells from donor and/or recipient tissue complicate the analyses potentially leading to false assumption. In such situations, extensive DNA sequencing and reference to public databases of known DNA variation can be used to deduce somatic tumor profiles.

In this study, tumor tissue samples were available from the transplant donor, two of four organ recipients, and a metastatic

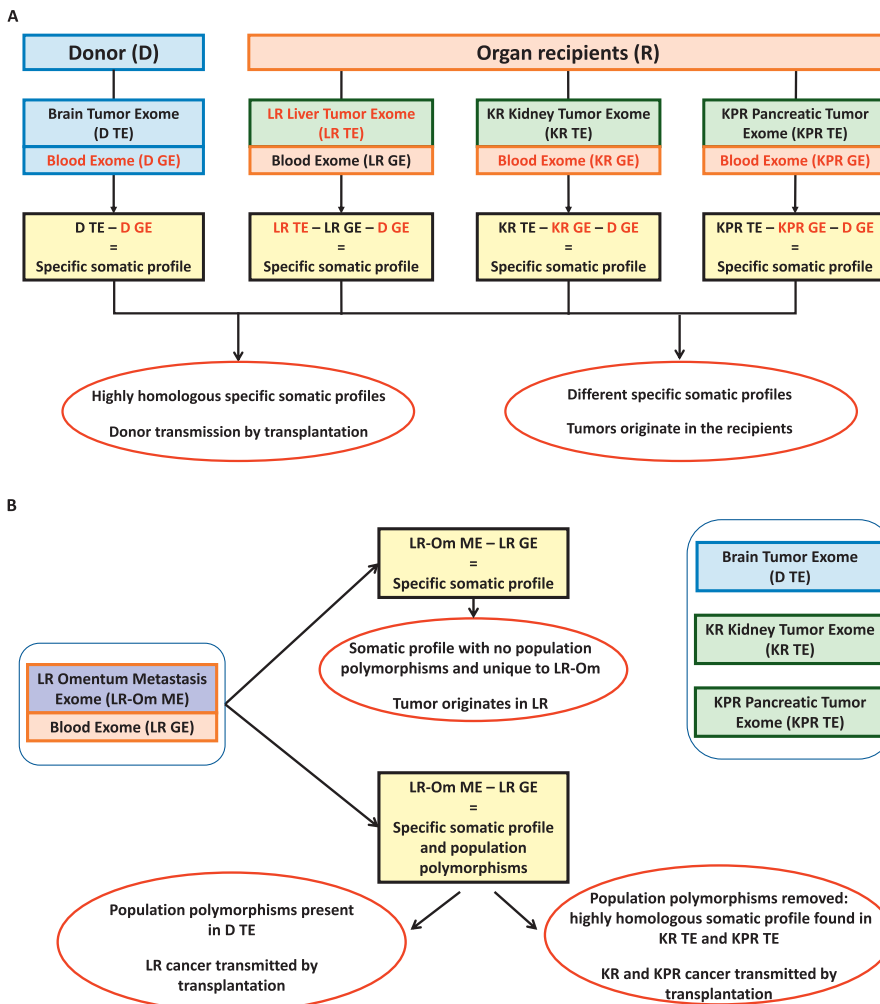


Figure 3. Possible molecular driven approaches to determine transmission by transplantation.

(A) A straightforward approach consists of establishing the somatic profile of each tumor and determining the degree of homology among these profiles. In such case, the germline exome of the donor and of each recipient is subtracted from each recipient respective tumor exome. (B) An approach to consider in the case of limited organ availability consists of using a metastasis, a distinct and distant entity from the transplanted organ, and the blood of such recipient to establish a somatic profile. The recipient germline is subtracted from the metastasis exome. If the metastasis somatic profile obtained is clean and unique when compared with the other recipient exomes, this is not a case of transmission by transplantation. If the profile still contains normal population polymorphisms as listed in the 1000 Genome Project and HapMap cohorts, dbSNP, ExAC, and gnomAD databases in extensive amount that could also be found in the donor tumor exome, this is a case of transmission by transplantation. A “cleaner” somatic profile can be established by filtering out these common polymorphisms and the cancer driver genes identified. If also found in the other lesions, this is a general case of transmission by transplantation.

Table 2. Classification of variants obtained by whole-exome sequencing and amount of potential somatic variants after removal of population common variants.

Variant classification	Liver Recipient				Donor			Kidney Recipient			Kidney Pancreas Recipient			
	Omentum metastasis	Blood	Blood germline removed	Common SNPs	Potential somatic variants	Lesion	Common SNPs	Potential somatic variants	Lesion	Common SNPs	Potential somatic variants	Lesion	Common SNPs	Potential somatic variants
UTR, unspecified exonic	9,741	8,014	1,727	1,598	129	8,674	8,497	177	10,816	10,567	249	11,511	11,212	299
Indel	404	302	102	92	10	333	304	29	414	367	47	446	388	58
Nonsynonymous (missense)	14,173	10,933	3,240	3,068	172	9,860	9,699	161	13,797	13,470	327	14,451	14,120	331
Nonsense	115	84	31	25	6	66	63	3	103	91	12	98	89	9
Synonymous (silent)	15,525	11,866	3,659	3,544	115	11,269	11,178	91	15,658	15,457	201	16,497	16,296	201
Splice Site	130	97	33	29	4	112	107	5	144	135	9	134	131	3
Non-exonic, ncRNA	118,464	100,074	18,390	16,924	1,466	121,712	118,933	2,779	145,911	142,632	3,279	153,175	149,074	4,101
Total variant count	158,552	131,370	27,182	25,280	1,902	152,026	148,781	3,245	186,843	182,719	4,124	196,312	191,310	5,002

lesion from the omentum of the liver recipient. In addition, one blood sample was available from the liver transplant recipient (Fig 1). Using the multi-step approach illustrated in Fig 3B, we sought to establish that the tumor lineage began in the transplant donor and led to the lesions observed in the organ recipients.

First, the omentum metastasis and blood from the liver recipient were analyzed. The liver recipient's germline exome sequence, which was obtained from the recipient's blood sample and contained 131,370 variants, was subtracted from the 158,552 variants in the sequence of the omentum metastasis sample (Table 2). These 27,182 variants that were within the omentum metastasis, but not the organ recipient's germline, should represent a putative somatic mutation profile for the omentum metastasis if the primary tumor originated from the recipient (Fig 3B upper designated section). Alternatively, if the primary tumor originated from the donor, this 27,182 variant set should contain the common and specific donor germline variants as well as somatic variants associated with the development of the donor original PXA tumor (Fig 3B lower designated section). Even without the availability of the donor germline exome, it was possible to determine if this variant set contained at least common population variants.

Population frequency data were then used to distinguish which of the 27,182 variants could be properly ascribed as somatic mutations arising within the tumor genome, or alternatively be germline variants that may have been from the donor's germline. Among the 27,182 variants, 25,280 were already known to be common variants, found in other population studies. The remaining 1,902 variants in the omentum metastasis were therefore the most likely potential somatic variants in this tumor including some donor rare specific germline variants.

The entire set of 27,182 variants in the putative somatic mutation profile for the omentum metastasis was next compared with data from exome sequencing of the donor tumor. Strikingly, the majority of the variants (23,246; 85.5%) were present in the donor tumor, strongly suggesting a common origin of the tumor samples. Among the 25,280 variants classified as "common variants," 22,719 (90%) were seen in the donor tumor data. The majority of the "missing" 10% of common variants (90% of 2,316) were located outside the targeted regions in the exome sequencing and are likely to have been missed by the exome capture reagent in the donor tumor.

The similarity of the donor tumor sequence to that of the omentum metastasis in the recipient was underscored by one other metric. Among the 27,182 variants that made up the somatic profile of the liver recipient's tumor, 20 were located on chromosome Y. The recipient was female, the donor male and these therefore likely reflected donor germline sequences. In aggregate, these data demonstrate that the omentum metastasis was derived from the donor tumor.

The examination of the data from the two other organ recipient's tumor samples provided an additional challenge, when compared to the liver recipient-organ donor comparison, as no blood germline samples were available from either the kidney or the kidney/pancreas recipients. The established relationship between the donor tumor and the liver recipient tumor was therefore leveraged to further clarify the somatic profile of the

omentum metastasis, to enable a more direct comparison with the kidney and kidney/pancreas recipient's tumors.

The KR and KPR recipient tumor exome sequence data were first filtered by removing common population polymorphisms, leaving 4,124, and 5,002 possible somatic variants, respectively (Table 2). These somatic profiles are enriched for somatic events—although most likely still contain some rare germline polymorphisms from each of these individuals as well as the donor. The same process was applied to the donor exome leaving 3,245 variants.

Next, the coding variants of the enriched somatic profiles from all tumors were compared with the coding variants of the somatic profile of the liver recipient's omentum metastasis. We observed 137 coding region variants with an ExAC frequency ≤ 0.000094 (probably somatic) and 68 variants with an ExAC frequency ≥ 0.0001 and ≤ 0.0009 and 33 variants with an allelic fraction (AF) of 0.49–0.51 in the donor tumor (probably rare or specific donor germline variants), all shared among all tumors (Tables S2 and S3), indicating that the KR and KPR lesions were also a case of cancer transmission by transplantation.

Somatic profile

The 137 somatic coding set shared by all tumors consisted of 82 nonsynonymous, 4 indels, 5 nonsense, 3 splice site, and 43 synonymous coding mutations (Tables 3 and S3). Thirty mutations were predicted to have a deleterious or possible damaging impact on the protein function by at least 8 of the 12 prediction algorithms normally used in sequencing analysis (Table S3). These included the following genes known for their association with cancer: *BRAF* (V600E) and *PIK3CA* (E545K), both harboring hotspot mutations and three other possible driver genes, *SDHC* (H127R), *DDR2* (R668C), and *FANCD2* (C1130Y). The neural cell adhesion molecule (*NCAM1*) gene was affected by a frameshift deletion at the junction of the UTR and coding sequence that resulted in the loss of the transcription start probably affecting the protein integrity. Whole-genome sequencing (WGS) of the donor TF also detected a deletion of over 214,499 bases (chromosome 9: 21,948,801–22,163,300) in the region covering *CDKN2A* and *CDKN2B* (Table 4). Using MLPA, we confirmed the presence of such deletion in the donor RT and recipient lesions (Fig 4). Three major cancer associated pathways were affected in this

somatic profile: the activation of the MAPK and phosphoinositide 3-kinase (PI3K) signaling pathways, *BRAF* and *PIK3CA* mutations, respectively, and the inactivation of the tp53 tumor suppressor pathway with the *CDKN2A* and *CDKN2B* deletion.

Other coding events were unique to each lesion or shared among two or three lesions (Tables 3 and S4). Most of those variants were passenger mutations but could also be specific and rare polymorphisms linked to the individual because their exact origin could not be established clearly in the absence of the donor, KR, and KPR germline exome. Only three mutations were in genes linked to cancer development: *NF2* 1174fs and *MLL3* both detected in the LR-Om and characterized as pathogenic, and *WT1* in the KR lesion.

BRAF is a predominant cancer driver gene, and it can be assumed that its mutation occurred earlier in oncogenesis. So, we used its AF (variant coverage over total coverage) to assess the purity of the tumors (AF fold 2 alleles fold 100), a method often used in pancreatic ductal adenocarcinoma with *KRAS* (Biankin et al, 2012). LR-Om purity was estimated at 97%, KR and KPR lesions at 78%, and the donor TF and RT at 50% and 47%, respectively (Table 4).

PIK3CA AF showed a marked increase in the donor's lesions over the 10 d separating the collection of the TF at the time of the hematoma evacuation and the first tumor resection even if both had equivalent tumor purity. Below the level of detection by sequencing, *PIK3CA* variant allelic ratio was estimated to be as low as 1% in the TF by locked nucleic acid (LNA)-PCR sequencing assay (Fig 5), then at 13–14% in the donor RT, equivalent to what had been obtained by Whole exome sequencing (WES). By contrast, it was almost equal to *BRAF* AF in the LR-Om (45% versus 49%) and equal in the KR lesion (both 39%), correlating with the tumor purity of both lesions. This suggests that clonal entities were present in the donor tumor from the time the hematoma was removed. Such clones might have aggressively expanded up to the first surgery and become an active part of the tumor regrowth. However, it cannot be denied that spatial heterogeneity normally present in every tumor could have resulted in sample bias and cause the discrepancy between the two donor tumor samplings even if they had both the same percentage purity. Nevertheless, only the tumor cells containing the *PIK3CA* mutation spread beyond the brain barrier, relocated in different organs, and then aggressively expanded in the immunosuppressed recipients.

Table 3. Classification of coding variants shared or unique to a tumor.

Variant classification	Shared among					Unique to			
	Four tumors (donor rare germline variants)	Four tumors (somatic variants)	Donor, kidney recipient, KPR lesions	Liver recipient (LR)-Om & two other lesions	Two lesions	Donor lesion	LR-Om metastasis	Kidney recipient lesion	KPR lesion
Nonsynonymous (missense)	69	82	16	6	0	3	46	132	177
Synonymous (silent)	29	43	9	2	0	7	42	35	114
Indel	2	4	13	0	3	5	3	19	34
Nonsense		5	1	0	0	0	2	11	6
Splice site	1	3	2	0	0	3	1	5	2
Total	101	137	41	8	3	18	94	202	333

Table 4. Variant allelic fraction and estimated tumor cellularity.

Gene	Variant classification	Amino acid change	Chr change	Donor TF	Donor RT	Liver recipient (LR)Om	Kidney recipient lesion	KPR lesion	Prediction impact
Estimated Tumor Purity based on <i>BRAF</i> V600E allelic fraction				50%	47%	97%	78%	78%	
<i>BRAF</i>	Missense	p.V600E	c.T1799A	0.25	0.23	0.49	0.39	0.39	High
<i>PIK3CA</i>	Missense	p.E545K	c.G1633A	bd ^a	0.14	0.45	0.39	0.18	High
<i>DDR2</i>	Missense	p.R668C	c.C2002T	0.56	0.40	0.41	0.33	0.18	High
<i>SDHC</i>	Missense	p.H127R	c.A380G	0.54	0.45	0.35	0.30	0.20	High
<i>FANCD2</i>	Missense	p.C1130Y	c.G3389A	0.55	0.42	0.19	0.41	0.13	possibly damaging
<i>NCAM1</i>	Frameshift Del	p.M1_3del	C.-23_8del	bd ^a	0.16	0.20	0.20	0.18	uncertain
<i>NF2</i>	Frameshift Del	p.I174fs	c.521delT	—	—	0.20	—	—	High
<i>KMT2C, MLL3</i>	Missense	p.P3998S	c.C11992T	—	—	0.07	—	—	High
<i>WT1</i>	Stopain	p.R430X	c.C1288T	—	—	—	0.16	—	High
		Start position	End position	Methods of detection					
<i>CDKN2A/B</i>	Deletion	chr9: 21948801	chr9: 22163300	Whole-genome sequencing	MLPA	MLPA	MLPA	MLPA	

^aBelow detection.

Discussion

Here we analyzed tumor DNA from samples derived from a donor and three of the four organ recipients who developed malignancy after transplant. NGS was used for the first time, to track the lineage relationships between the different samples. The analysis of common and rare polymorphisms and cancer associated mutations indicated that cancerous cells were transmitted through transplant. Such cells were the source of the liver recipient's aggressive cancer, and the high mutation profile similarity of the two other recipients' lesions confirms their similar clonal origin.

Anaplastic PXA is a rare tumor and complete specific mutation profiles have not been established. Based on targeted panel sequencing, the most frequent somatic mutations detected in PXA are *BRAF*, *FANCA/D2/I/M*, *PRKDC*, *NF1*, *NOTCH2/3/4*, and *CDKN2A* (Park et al, 2017; Zou et al, 2019). In this study, the tumors were characterized by some of these genetic alterations: *BRAF*, *FANCD2*, and *CDKN2A* found in all lesions. Others observed mutations were not previously associated with anaplastic PXA or PXA: *PIK3CA*, *SDHC*, *DDR2*, and *NCAM*. *PIK3CA* hotspot mutations are usually found in 6–15% of glioblastoma cases where they are linked to increased invasiveness and/or CNS dissemination, early recurrence, and poor prognosis (Tanaka et al, 2019); *SDHC* mutations are found in paragangliomas 3 (PGL3), a neural crest tumor that can develop at various body sites (Niemann & Müller, 2000); and mutations in *DDR2*, a member of the collagen receptor family and a receptor tyrosine kinase, have been identified in a large number of cancers and might play a role in

invasiveness (Valiathan et al, 2012; Henriet et al, 2018). The *NF2*, *MLL3*, and *WT1* mutations, genes considered as tumor suppressor genes, were uniquely detected in the LR-Om and KR lesion and might have been acquired post transplantation. Mutations in *NF2* occur in schwannomas and meningiomas, as well as other types of cancer including GBM, hepatic, mesothelioma, breast, colorectal, skin, clear cell renal cell carcinoma, and prostate cancer (Petrilli & Fernández-Valle, 2016). *WT1* is a transcription factor, mutated it has been associated with the development of Wilms' Tumor. Mutations in *MLL3* have been often found in leukemia.

The early regrowth and the observed rapid demise of the donor, which is generally inconsistent with PXA histology usually considered curable, the fast and deadly expansions that were observed in the immunosuppressed hosts, the high homology between the mutation profiles of lesions growing in different organs, the role such mutations might play in other cancers, taken together these observations are consistent with a mutation profile indicative of an aggressive phenotype of clonal entities present in the donor original tumor. Thus, the molecular study of the cohort revealed a logical pathway for the origins and dissemination of this transplanted malignancy.

Precision medicine and the implementation of molecular approaches as a key to decide treatment strategy and predict prognosis is now a reality. But it is still often based on the limited detection of a single mutation such as in this case was *BRAF* V600E. In contrast, NGS technologies offer a global, comprehensive perspective of the somatic mutation profile. As we learn more about the correlation between comprehensive mutation profile and invasion causality, we should seriously consider adding genetic somatic profile

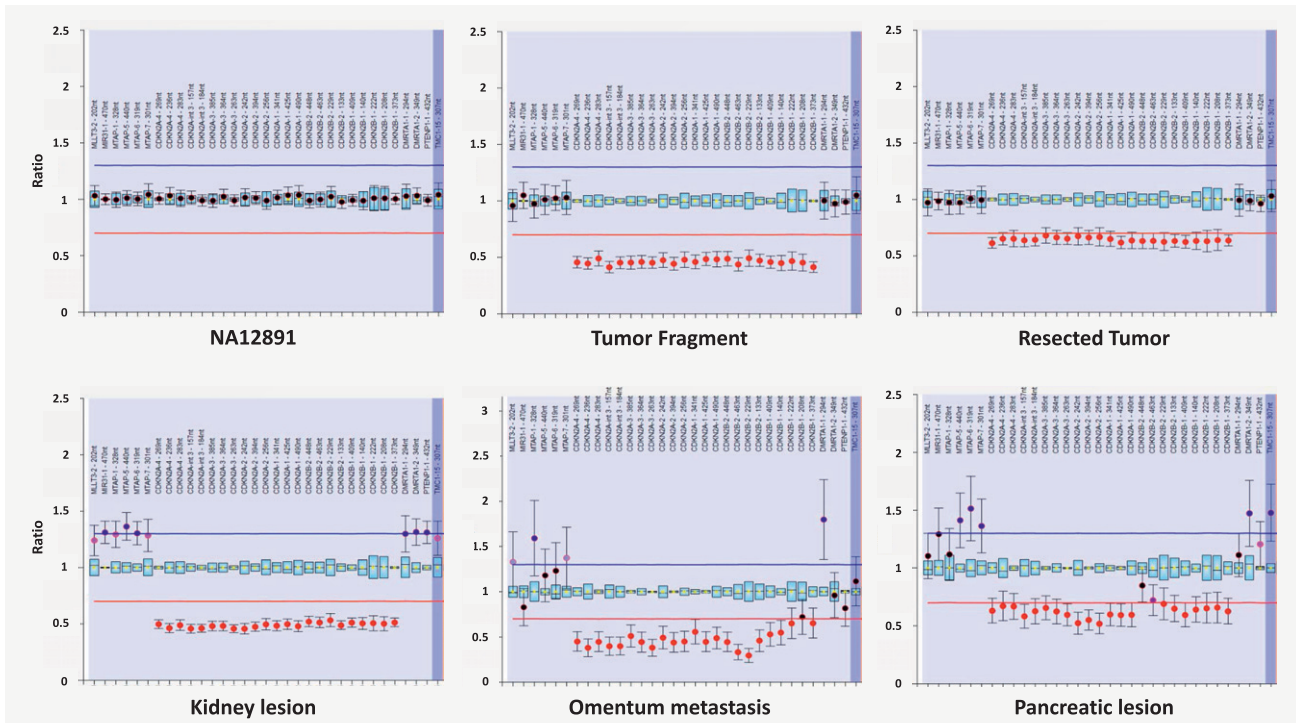


Figure 4. Ratio chart of the MLPA analysis of chromosomal 9 region covering the genes *CDKN2A* and *B*. The dots display the probe ratios and the error bars the 95% confidence ranges. Locations of the region are displayed above the analysis on the x-axis and ratio results on the Y-axis. The red and blue lines at ratio 0.7 and 1.3 indicate the arbitrary borders for loss and gain, respectively. NA12891, one of the three cell lines from the HapMap project used as reference samples, harbors a wild-type allele (ratio of 1) whereas the deletion of the entire region covering the genes *CDKN2A* and *B* is detected in all donor and recipient samples (ratio < 0.7). A higher variation and confidence ranges is apparent in the formalin-preserved omentum metastasis of the liver recipient and in the pancreatic formalin-fixed paraffin-embedded lesion of the kidney and pancreas recipient in comparison to the other fresh frozen solid tissues (donor and kidney recipient samples) because of the chemical treatment of the tissues.

to the list of consideration of transplant safety. This is especially feasible when tumors are removed months before the donor deadly outcome, and original and regrowth tumors can be analyzed for mutation profile evolution and aggressiveness.

Comparatively, methods such as the detection of circulating tumor cells or somatic DNA to assess potential metastasis face a

high challenge in the case of brain tumor such as but not limited to the presence of the brain barrier limiting their amount in circulation and the lack of reliable tumor markers. In this case, for example, glial and neural markers (glial fibrillary acidic protein, S100, or synaptophysin) were positively expressed by the donor tumor cells but were undetected in the recipient lesions.

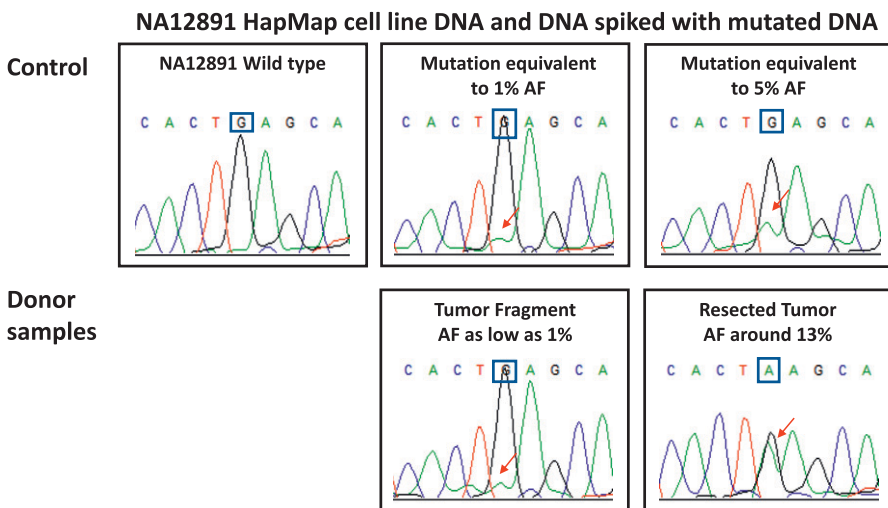


Figure 5. *PIK3CA* G1633A (E545K) locked nucleic acid (LNA)-PCR sequencing.

The HapMap project NA12891 cell line harboring a wild-type allele (*PIK3CA* c.G1633G, □) was used as a normal control. The NA12891 DNA was also spiked with the mutated DNA of the kidney lesion at an equivalence of 1% and 5% variant allelic fraction to establish baseline controls. Based on these control chromatograms, the *PIK3CA* mutation was present in the donor resected tumor as well as in the tumor fragment but at an allelic fraction as low as 1% in the tumor fragment and around 13% in the resected tumor.

There is a significant mismatch between the increasing demand of tissues for transplant and donor organ availability. Although deceased organ donors have steadily increased since 2011, only ~3 in 1,000 people die in a manner that presently allows for organ donation (<https://optn.transplant.hrsa.gov/data/view-data-reports/national-data/>, <https://www.organdonor.gov>). There is a critical need for additional strategies to narrow this substantial gap. By ensuring the safety of organs to be transplanted, the NGS-based technologies can discard some donors but conversely increase the pool of individuals that were rejected uniquely on the basis of cancerous condition.

Transplant from deceased donors requires careful screening of donor and organ integrity via methods that do not delay surgery. NGS methods can provide precise molecular pathology profiles for tumors observed in donors from sites distal to the organs to be transplanted and can therefore reduce the likelihood of cancer transmission and possibly increase the donor pool. As the development of more rapid turn-around times for NGS assays proceeds, molecular technologies can be applied to insure safer transplantation of well-preserved organs.

Materials and Methods

Histology, morphology, and immunohistochemistry staining

The donor and recipient hemotoxylin and eosin (H&E)-stained slides from the formalin-fixed paraffin-embedded (FFPE) lesions were examined by the pathologists from the original sites of collection. Immunohistochemistry analysis for the detection of subtype markers expression was performed at each site.

Samples

We acquired: solid frozen tumor samples from the donor hematoma evacuation surgery and the first resection surgery; and the KR; a blood sample collected in PAXgene Blood Tube and an omentum metastasis sample preserved in a formalin solution from the liver recipient; and a FFPE pancreas sample from the kidney and pancreas recipient. Sample from the lung recipient was not available. The study was performed under a Baylor College of Medicine Institutional Research Board approval protocol H21497.

Nucleic acid isolation

DNA was isolated in accordance to the tissue type as per manufacturer protocol: LR blood draw in PAXgene Blood Tube: PAXgene

blood DNA kit (Cat no. 761133; PreAnalytiX/QIAGEN); donor and KR solid tissue lesions: Gentra Puregene (Cat no. 158667; QIAGEN); LR-Om in formalin and FFPE sections from KRP pancreatic lesion: QiaAmp DNA FFPE tissue kit (Cat no. 56404; QIAGEN). DNA was quantified using the Quant-iT PicoGreen dsDNA Assay kit (Cat no. P11496; Thermo Fisher Scientific).

Whole-exome sequencing

WES was performed on the NovaSeq 6000 platform on the donor RT, LR blood and metastasis, and KR and KPR lesions.

WES library preparation

DNA from the different sources was constructed into Illumina paired-end pre-capture libraries according to the manufacturer's protocol (Multiplexing SamplePrep Guide 1005361D; Illumina) with modifications as described in the BCM-HGSC Illumina Barcoded Paired-End Capture Library Preparation protocol.

Briefly, 200 ng of DNA in 50 μ l volume was sheared into fragments of average size of 300 base pairs in a Covaris plate with E220 system (Covaris, Inc.) followed by end-repair (End Repair module, E6050; New England BioLabs [NEB]), A-tailing (NEBNext dA-Tailing Module, E6053; NEB), and ligation of the Illumina multiplexing PE adaptors (ExpressLink Ligase, Cat no. A13726101; Invitrogen).

Pre-capture Ligation Mediated-PCR (LM-PCR) was performed for six cycles using the Library Amplification Readymix containing KAPA HiFi DNA Polymerase (Cat no. KK2612; Kapa Biosystems, Inc.). Universal primer LM-PCR Primer 1.0 and LM-PCR Primer 3.1 were used to amplify the ligated products. Reaction products were purified using 1.8 \times Agencourt AMPure XP beads (Cat. no. A63882; Beckman) after Covaris shearing, end-repair, and A-tailing. After adapter ligation and PCR amplification, libraries were purified twice using 1.2 \times Agencourt AMPure XP beads. After the final XP bead purification, quantification and size distribution of the pre-capture LM-PCR product was determined on Agilent Bioanalyzer 2100 using the DNA7500 kit (5067-1506; Agilent) (Table 5).

Exome capture

The FFPE and Non-FFPE samples were pooled separately using 500 ng of library for each sample. These two pools of libraries were then hybridized in solution to the HGSC VCRome 2.1 design (Bainbridge et al, 2011) (42 Mb [mega base]; NimbleGen) according to the manufacturer's protocol *NimbleGen SeqCap EZ Exome Library SR User's Guide (Version 2.2)* with minor revisions. For ~3,500 clinically relevant genes that had low coverage (<20 \times coverage at ~2.72 Mb sequencing data) probes were supplemented with PKv1 and PKv2

Table 5. Library yield details for whole-exome sequencing.

Sample	Library average size (bp)	Library yield (ng)	Pool
Liver recipient Omentum metastasis	405	1,124.3	Formalin-fixed paraffin-embedded Pool
KPR Pancreatic lesion	436	1,737.5	
Kidney recipient Kidney lesion	468	2,384	
Donor Resected Tumor	470	2,297	Non formalin-fixed paraffin-embedded Pool
Liver recipient Blood	461	2,633.3	

Table 6. Whole-exome sequencing sequencing metrics.

Sample	Total MB	Unique Aligned MB	Percent Unique	Percent Duplicate Reads	Median Insert Size	Average Coverage	% base covered 1×	% base covered 20×
Donor resected tumor	21,565	18,497	85.9	19.99	304	199	99.83	99.21
Liver recipient omentum metastasis	11,757	17,155	82.8	22.81	208	113.67	99.64	98.29
Liver recipient blood	19,832	9,726	86.59	18.59	298	187.64	99.77	99.02
Kidney recipient kidney lesion	21,752	18,171	83.67	23.07	303	191.15	99.83	99.22
KPR pancreatic lesion	30,426	23,328	76.76	34.89	268	240.94	99.82	99.33

reagent spiked into the VCRome 2.1. Human COT1 DNA and xGen Universal Blocking oligonucleotides (Integrated DNA Technologies) were added into the hybridization to block repetitive genomic sequences and the adaptor sequences and hybridization was carried out at 42°C for 72 h. Post-capture LM-PCR amplification was performed using the Library Amplification Readymix containing KAPA HiFi DNA Polymerase (Cat no. KK2612; Kapa Biosystems, Inc.) with 12 cycles of amplification. After the final AMPure XP bead purification, quantity and size of the capture library was analyzed using the Agilent Bioanalyzer 2100 DNA Chip 7500.

WES

Sequencing was performed on the NovaSeq 6000 instrument using the S4 reagent kit (300 cycles) to generate 2 × 150 bp paired-end reads. Post-capture library pools were sequenced on NovaSeq S4 flow cell to generate between 9.7 and 23.3 Gb unique sequence data per sample (Table 6).

WGS

WGS was performed on the HiSeq X platform on the donor TF to identify major deletions and insertions and see the status of ascertained driver genes and their AF in this lesion by comparison to the others.

WGS library preparation and sequencing

WGS libraries were prepared as reported earlier (Kessler et al, 2020; Raffield et al, 2020) and sequenced in two lanes on HiSeq X to generate 77.5× sequence coverage (Table 7).

Data analysis

Primary data analysis

Initial sequence analysis was performed using the HGSC Mercury analysis pipeline (<https://www.hgsc.bcm.edu/software/mercury>) as follows. The .bcl files produced by the primary analysis software were

transferred into the HGSC analysis infrastructure by the HiSeq Real-time Analysis module. Mercury ran the vendor's primary analysis software (CASAVA) which demultiplexed pooled samples and generated sequence reads and base-call confidence values (qualities). The reads were then mapped to the GRCh37 Human reference genome (<http://www.ncbi.nlm.nih.gov/projects/genome/assembly/grc/human/>) using the Burrows-Wheeler aligner (<http://bio-bwa.sourceforge.net/>) (Li & Durbin, 2009) to produce a binary alignment/map (BAM) file (Li et al, 2009). The last step involved quality recalibration (using GATK [DePristo et al, 2011] <https://www.broadinstitute.org/gatk/>) and, where necessary, the merging of separate sequence-event BAMs into a single sample-level BAM. BAM sorting, duplicate-read marking, and realignment to improve in/del discovery all occurred at this step.

Cancer data analysis

Primary BAM files were separately run through Atlas-SNP (Shen et al, 2010) and PinDel (Ye et al, 2009). Variant annotation was performed using Annovar (Wang et al, 2010), COSMIC (Forbes et al, 2011), and dbSNP (Sherry et al, 2001). Low-quality variants and normal population polymorphism calls were removed by filtering against the 1000 Genome Project and HapMap cohorts, dbSNP, ExAC, and gnomAD databases for variant present in the population at an allele frequency greater or equal to 0.001 in more than one database. Prediction of the mutation impact on the protein function was performed using 12 different prediction software (SIFT4G, Polyphen2 HDV, Polyphen2 HVAR, Mutation Taster, DEOGEN2, M-CAP, ClinPred, fathmm-MKL coding, fathmm-XF_coding, BayesDel_addAF, BayesDel_noAF, and LIST-S2).

Structural variant analysis

Structural variants (SVs) were identified from the WGS BAM file using Parliament2, an ensemble SV caller, that runs a combination of tools to generate SV calls on whole-genome sequencing data, followed by genotyping step using SVTyper and merging step using SURVIVOR tool (<https://github.com/dnanexus/parliament2> [English et al, 2015]). SV calls were annotated using an in-house script and UCSC gene models. SVs were filtered to include only deletions that

Table 7. Whole-genome sequencing metrics.

Sample	Yield bases	Percent Aligned bases	Percent Duplicate Reads	Median Insert Size	Average Coverage	% base covered 1×	% base covered 20×
Donor tumor fragment	2.55 × 10 ¹¹	97.81	9.14	422	77.56	100	99.74

had genotyped calls, were identified by more than one underlying algorithm, and overlapped coding exons. We used an internal SV dataset from 41 samples to filter out variants common in general population. Finally, the resulting set of rare deletions was further filtered to include variants overlapping 596 cancer genes.

Locked nucleic acid PCR sequencing assay

PIK3CA G1633A (E545K) low AF mutation was detected in the original donor lesion by LNA PCR sequencing assay (Ang et al, 2013). Briefly, 100 ng of DNA was used to amplify the mutated *PIK3CA* region using HotStarTaq DNA Polymerase (QIAGEN), PCR primers, and thermal cycling parameters as specified by Ang et al (2013). A LNA probe binding to the reference sequence around *PIK3CA* codon 545 was added to the Sanger reaction to enrich the yield of mutant alleles. Wild-type DNA (Coriell 1000 Genome Project sample NA12891) and KR mutated DNA spiked into the wild-type DNA at concentrations equivalent to an allelic ratio of 5% and 1% were used as positive controls.

Multiple ligation-dependent probe amplification (MLPA) assay

The MLPA assay was conducted to assess the copy number variation of the *CDKN2A* genomic region according to the manufacturer's protocols (MRC-Holland). In brief, 50 ng of control DNA (HapMAP project NA12878, NA12891, and NA12892 cell lines, used as reference samples), 50 ng of DNA extracted from the donor and KR solid tissue lesions or 100 ng of DNA extracted from the formalin-preserved LR-Om and FFPE KRP pancreatic lesion were denatured at 98°C for 5 min and subsequently hybridized to the MLPA probe mix (P419-*CDKN2A/2B-CDK4*, MRC-Holland) at 60°C for 16 h. After hybridization, the ligase was added in the reaction tube. The ligation reaction was performed at 54°C for 15 min followed by inactivation of the ligase at 98°C for 5 min. Ligated probe pairs were amplified as follow: 98°C 5 min, 35 cycles of (95°C 30 s, 60°C 30 s, 72°C 60 s), and a final incubation at 72°C 20 min. The PCR amplified fragments were separated by capillary electrophoresis using the ABI 3500 Genetic Analyzer (Applied Biosystems) with GS600 size standard. The MLPA data were analyzed with the Coffalyser.net Software (MRC-Holland).

Data Availability

The datasets generated during the current study have been deposited in dbGAP.

Supplementary Information

Supplementary Information is available at <https://doi.org/10.26508/lsa.202000941>.

Acknowledgements

The authors acknowledge Allison Boyer at Life Share of Oklahoma, the pathology teams of the different institutions who graciously send us tissues, Dr Patricia Castro, Director of the Human Tissue Acquisition and Pathology at

Baylor College of Medicine, and the people at the Human Genome Sequencing Center who made the realization of this study possible. This work was supported by a grant from the National Human Genome Research Institute.

Authors' Contributions

M-C Gingras: conceptualization, data curation, formal analysis, and writing—original draft, review, and editing.

A Sabo: formal analysis.

M Cardenas: formal analysis.

A Rana: resources.

S Dhingra: formal analysis.

Q Meng: formal analysis and supervision of methodology.

J Hu: formal analysis and supervision of methodology.

D Muzny: supervision of methodology.

H Doddapaneni: supervision of methodology.

L Perez: methodology.

V Korchina: methodology.

C Nessner: methodology.

X Liu: methodology.

H Chao: methodology.

J Goss: conceptualization.

RA Gibbs: conceptualization, funding acquisition, and writing—review and editing.

Conflict of Interest Statement

The authors declare that they have no conflict of interest.

References

- Ang D, O'Gara R, Schilling A, Beadling C, Warrick A, Troxell ML, Corless CL (2013) Novel method for *PIK3CA* mutation analysis: Locked nucleic acid-PCR sequencing. *J Mol Diagn* 15: 312–318. doi:[10.1016/j.jmoldx.2012.12.005](https://doi.org/10.1016/j.jmoldx.2012.12.005)
- Armanios MY, Grossman SA, Yang SC, White B, Perry A, Burger PC, Orens JB (2004) Transmission of glioblastoma multiforme following bilateral lung transplantation from an affected donor: Case study and review of the literature. *Neuro Oncol* 6: 259–263. doi:[10.1215/S1152851703000474](https://doi.org/10.1215/S1152851703000474)
- Bainbridge MN, Wang M, Wu Y, Newsham I, Muzny DM, Jefferies JL, Albert TJ, Burgess DL, Gibbs RA (2011) Targeted enrichment beyond the consensus coding DNA sequence exome reveals exons with higher variant densities. *Genome Biol* 12: R68. doi:[10.1186/gb-2011-12-7-r68](https://doi.org/10.1186/gb-2011-12-7-r68)
- Biankin AV, Waddell N, Kassahn KS, Gingras MC, Muthuswamy LB, Johns AL, Miller DK, Wilson PJ, Patch AM, Wu J, et al (2012) Pancreatic cancer genomes reveal aberrations in axon guidance pathway genes. *Nature* 491: 399–405. doi:[10.1038/nature11547](https://doi.org/10.1038/nature11547)
- Bosmans JL, Ysebaert D, De Cock AM, Hauben E, Muylle L, Schrijvers D, Van Marck E, Eyskens E, De Broe ME (1997) Interferon-alpha and the cure of metastasis of a malignant meningioma in a kidney allograft recipient: A case report. *Transpl Proc* 29: 838. doi:[10.1016/s0041-1345\(96\)00156-x](https://doi.org/10.1016/s0041-1345(96)00156-x)
- Buell JF, Trofe J, Hanaway MJ, Lo A, Rosengard B, Rilo H, Alloway R, Beebe T, First MR, Woodle ES (2001) Transmission of donor cancer into cardiothoracic transplant recipients. *Surgery* 130: 660–666–8. doi:[10.1067/msy.2001.117102](https://doi.org/10.1067/msy.2001.117102)
- Cavaliere R, Schiff D (2004) Donor transmission of primary brain tumors: A neurooncologic perspective. *Transplant Rev* 18: 204–213. doi:[10.1016/j.trre.2004.09.003](https://doi.org/10.1016/j.trre.2004.09.003)

- Collignon FP, Holland EC, Feng S (2004) Organ donors with malignant gliomas: An update. *Am J Transpl* 4: 15–21. doi:[10.1046/j.1600-6143.2003.00289.x](https://doi.org/10.1046/j.1600-6143.2003.00289.x)
- Colquhoun SD, Robert ME, Shaked A, Rosenthal JT, Millis TM, Farmer DG, Jurim O, Busuttill RW (1994) Transmission of CNS malignancy by organ transplantation. *Transplantation* 57: 970–974.
- DePristo MA, Banks E, Poplin R, Garimella KV, Maguire JR, Hartl C, Philippakis AA, del Angel G, Rivas MA, Hanna M, et al (2011) A framework for variation discovery and genotyping using next-generation DNA sequencing data. *Nat Genet* 43: 491–498. doi:[10.1038/ng.806](https://doi.org/10.1038/ng.806)
- Detry O, Honoré P, Hans MF, Delbouille MH, Jacquet N, Meurisse M (2000) Organ donors with primary central nervous system tumor. *Transplantation* 70: 244–248.
- English AC, Salerno WJ, Hampton OA, Gonzaga-Jauregui C, Ambreth S, Ritter DI, Beck CR, Davis CF, Dahdouli M, Ma S, et al (2015) Assessing structural variation in a personal genome-towards a human reference diploid genome. *BMC Genomics* 16: 286. doi:[10.1186/s12864-015-1479-3](https://doi.org/10.1186/s12864-015-1479-3)
- Forbes SA, Bindal N, Bamford S, Cole C, Kok CY, Beare D, Jia M, Shepherd R, Leung K, Menzies A, et al (2011) COSMIC: Mining complete cancer genomes in the catalogue of somatic mutations in cancer. *Nucleic Acids Res* 39: D945–D950. doi:[10.1093/nar/gkq929](https://doi.org/10.1093/nar/gkq929)
- Frank S, Müller J, Bonk C, Haroske G, Schackert HK, Schackert G (1998) Transmission of glioblastoma multiforme through liver transplantation. *Lancet* 352: 31. doi:[10.1016/S0140-6736\(98\)24027-X](https://doi.org/10.1016/S0140-6736(98)24027-X)
- Henriet E, Sala M, Abou Hammoud A, Tuariiionoa A, Di Martino J, Ros M, Saltel F (2018) Multitasking discoidin domain receptors are involved in several and specific hallmarks of cancer. *Cell Adh Migr* 12: 363–377. doi:[10.1080/19336918.2018.1465156](https://doi.org/10.1080/19336918.2018.1465156)
- Hoadley KA, Yau C, Hinoue T, Wolf DM, Lazar AJ, Drill E, Shen R, Taylor AM, Cherniack AD, Thorsson V, et al (2018) Cell-of-Origin patterns dominate the molecular classification of 10,000 tumors from 33 types of cancer. *Cell* 173: 291–304.e6. doi:[10.1016/j.cell.2018.03.022](https://doi.org/10.1016/j.cell.2018.03.022)
- Hoffman HJ, Duffner PK (1985) Extraneural metastases of central nervous system tumors. *Cancer* 56: 1778–1782. doi:[10.1002/1097-0142\(19851001\)56:7+<1778::aid-cnrcr2820561309>3.0.co;2-i](https://doi.org/10.1002/1097-0142(19851001)56:7+<1778::aid-cnrcr2820561309>3.0.co;2-i)
- Ison MG, Nalesnik MA (2011) An update on donor-derived disease transmission in organ transplantation. *Am J Transpl* 11: 1123–1130. doi:[10.1111/j.1600-6143.2011.03493.x](https://doi.org/10.1111/j.1600-6143.2011.03493.x)
- Jonas S, Bechstein WO, Lemmens HP, Neuhaus R, Thalmann U, Neuhaus P (1996) Liver graft-transmitted glioblastoma multiforme. A case report and experience with 13 multiorgan donors suffering from primary cerebral neoplasia. *Transpl Int* 9: 426–429. doi:[10.1007/BF00335707](https://doi.org/10.1007/BF00335707)
- Kashyap R, Ryan C, Sharma R, Maloo MK, Safadjou S, Graham M, Tretheway D, Jain A, Orloff M (2009) Liver grafts from donors with central nervous system tumors: A single-center perspective. *Liver Transpl* 15: 1204–1208. doi:[10.1002/lt.21838](https://doi.org/10.1002/lt.21838)
- Kessler MD, Loesch DP, Perry JA, Heard-Costa NL, Taliun D, Cade BE, Wang H, Daya M, Ziniti J, Datta S, et al (2020) De novo mutations across 1,465 diverse genomes reveal mutational insights and reductions in the Amish founder population. *Proc Natl Acad Sci U S A* 117: 2560–2569. doi:[10.1073/pnas.1902766117](https://doi.org/10.1073/pnas.1902766117)
- Lefrancois N, Touraine JL, Cantarovich D, Cantarovich F, Faure JL, Dubernard JM, Dureau G, Colpart JJ, Bouvier R, Traeger J (1987) Transmission of medulloblastoma from cadaver donor to three organ transplant recipients. *Transpl Proc* 19: 2242.
- Li H, Durbin R (2009) Fast and accurate short read alignment with Burrows-Wheeler transform. *Bioinformatics* 25: 1754–1760. doi:[10.1093/bioinformatics/btp324](https://doi.org/10.1093/bioinformatics/btp324)
- Li H, Handsaker B, Wysoker A, Fennell T, Ruan J, Homer N, Marth G, Abecasis G, Durbin R (2009) The sequence alignment/map format and SAMtools. *Bioinformatics* 25: 2078–2079. doi:[10.1093/bioinformatics/btp352](https://doi.org/10.1093/bioinformatics/btp352)
- Liwnicz BH, Rubinstein LJ (1979) The pathways of extraneural spread in metastasizing gliomas: A report of three cases and critical review of the literature. *Hum Pathol* 10: 453–467. doi:[10.1016/s0046-8177\(79\)80051-9](https://doi.org/10.1016/s0046-8177(79)80051-9)
- Morath C, Schwenger V, Schmidt J, Zeier M (2005) Transmission of malignancy with solid organ transplants. *Transplantation* 80: S164–S166. doi:[10.1097/01.tp.0000186911.54901.21](https://doi.org/10.1097/01.tp.0000186911.54901.21)
- Morse JH, Turcotte JG, Merion RM, Campbell DA Jr., Burtch GD, Lucey MR (1990) Development of a malignant tumor in a liver transplant graft procured from a donor with a cerebral neoplasm. *Transplantation* 50: 875–877. doi:[10.1097/00007890-199011000-00026](https://doi.org/10.1097/00007890-199011000-00026)
- Nauen DW, Li QK (2014) Cytological diagnosis of metastatic glioblastoma in the pleural effusion of a lung transplant patient. *Diagn Cytopathol* 42: 619–623. doi:[10.1002/dc.22993](https://doi.org/10.1002/dc.22993)
- Niemann S, Müller U (2000) Mutations in SDHC cause autosomal dominant paraganglioma, type 3. *Nat Genet* 26: 268–270. doi:[10.1038/81551](https://doi.org/10.1038/81551)
- Park SH, Won J, Kim SI, Lee Y, Park CK, Kim SK, Choi SH (2017) Molecular testing of brain tumor. *J Pathol Transl Med* 51: 205–223. doi:[10.4132/jptm.2017.03.08](https://doi.org/10.4132/jptm.2017.03.08)
- Pasquier B, Pasquier D, N’Golet A, Panh MH, Couderc P (1980) Extraneural metastases of astrocytomas and glioblastomas: Clinicopathological study of two cases and review of literature. *Cancer* 45: 112–125. doi:[10.1002/1097-0142\(19800101\)45:1<112::aid-cnrcr2820450121>3.0.co;2-9](https://doi.org/10.1002/1097-0142(19800101)45:1<112::aid-cnrcr2820450121>3.0.co;2-9)
- Petrilli AM, Fernández-Valle C (2016) Role of Merlin/NF2 inactivation in tumor biology. *Oncogene* 35: 537–548. doi:[10.1038/onc.2015.125](https://doi.org/10.1038/onc.2015.125)
- Raffield LM, Iyengar AK, Wang B, Gaynor SM, Spracklen CN, Zhong X, Kowalski MH, Salimi S, Polfus LM, Benjamin EJ, et al (2020) Allelic heterogeneity at the CRP locus identified by whole-genome sequencing in multi-ancestry cohorts. *Am J Hum Genet* 106: 112–120. doi:[10.1016/j.ajhg.2019.12.002](https://doi.org/10.1016/j.ajhg.2019.12.002)
- Ruiz JC, Cotorruelo JG, Tudela V, Ullate PG, Val-Bernal F, de Francisco AL, Zubimendi JA, Prieto M, Canga E, Arias M (1993) Transmission of glioblastoma multiforme to two kidney transplant recipients from the same donor in the absence of ventricular shunt. *Transplantation* 55: 682–683.
- Shen Y, Wan Z, Coarfa C, Drabek R, Chen L, Ostrowski EA, Liu Y, Weinstock GM, Wheeler DA, Gibbs RA, et al (2010) A SNP discovery method to assess variant allele probability from next-generation resequencing data. *Genome Res* 20: 273–280. doi:[10.1101/gr.096388.109](https://doi.org/10.1101/gr.096388.109)
- Sherry ST, Ward MH, Kholodov M, Baker J, Phan L, Smigielski EM, Sirotkin K (2001) dbSNP: The NCBI database of genetic variation. *Nucleic Acids Res* 29: 308–311. doi:[10.1093/nar/29.1.308](https://doi.org/10.1093/nar/29.1.308)
- Tanaka S, Batchelor TT, Iafrate AJ, Dias-Santagata D, Borger DR, Ellisen LW, Yang D, Louis DN, Cahill DP, Chi AS (2019) PIK3CA activating mutations are associated with more disseminated disease at presentation and earlier recurrence in glioblastoma. *Acta Neuropathol Commun* 7: 66. doi:[10.1186/s40478-019-0720-8](https://doi.org/10.1186/s40478-019-0720-8)
- Valiathan RR, Marco M, Leitinger B, Kleer CG, Fridman R (2012) Discoidin domain receptor tyrosine kinases: New players in cancer progression. *Cancer Metastasis Rev* 31: 295–321. doi:[10.1007/s10555-012-9346-z](https://doi.org/10.1007/s10555-012-9346-z)
- Wang K, Li M, Hakonarson H (2010) ANNOVAR: Functional annotation of genetic variants from high-throughput sequencing data. *Nucleic Acids Res* 38: e164. doi:[10.1093/nar/gkq603](https://doi.org/10.1093/nar/gkq603)
- Warrens AN, Birch R, Collett D, Daraktchiev M, Dark JH, Galea G, Gronow K, Neuberger J, Hilton D, Whittle IR, et al (2012) Advising potential recipients on the use of organs from donors with primary central nervous system tumors. *Transplantation* 93: 348–353. doi:[10.1097/TP.0b013e31823f7f47](https://doi.org/10.1097/TP.0b013e31823f7f47)
- Watson CJ, Roberts R, Wright KA, Greenberg DC, Rous BA, Brown CH, Counter C, Collett D, Bradley JA (2010) How safe is it to transplant organs from deceased donors with primary intracranial malignancy? An analysis of UK registry data. *Am J Transpl* 10: 1437–1444. doi:[10.1111/j.1600-6143.2010.03130.x](https://doi.org/10.1111/j.1600-6143.2010.03130.x)

Ye K, Schulz MH, Long Q, Apweiler R, Ning Z (2009) Pindel: A pattern growth approach to detect break points of large deletions and medium sized insertions from paired-end short reads. *Bioinformatics* 25: 2865–2871. doi:[10.1093/bioinformatics/btp394](https://doi.org/10.1093/bioinformatics/btp394)

Zhao P, Strohl A, Gonzalez C, Fishbein T, Rosen-Bronson S, Kallakury B, Ozdemirli M (2012) Donor transmission of pineoblastoma in a two-yr-old male recipient of a multivisceral transplant: A case report. *Pediatr Transpl* 16: E110–E114. doi:[10.1111/j.1399-3046.2010.01463.x](https://doi.org/10.1111/j.1399-3046.2010.01463.x)

Zou H, Duan Y, Wei D, Zhang Y, Dai J, Li J, Li X, Zhou J, Liu Z, Jin Z, et al (2019) Molecular features of pleomorphic xanthoastrocytoma. *Hum Pathol* 86: 38–48. doi:[10.1016/j.humpath.2018.08.038](https://doi.org/10.1016/j.humpath.2018.08.038)



License: This article is available under a Creative Commons License (Attribution 4.0 International, as described at <https://creativecommons.org/licenses/by/4.0/>).