



Article

# Novel Antibiofilm Inhibitor Ginkgetin as an Antibacterial Synergist against *Escherichia coli*

Yubin Bai <sup>1,2,3</sup>, Weiwei Wang <sup>1,2,3</sup>, Mengyan Shi <sup>1,2,3</sup>, Xiaojuan Wei <sup>1,2,3</sup>, Xuzheng Zhou <sup>1,2,3</sup>, Bing Li <sup>1,2,3</sup> and Jiyu Zhang <sup>1,2,3,\*</sup>

<sup>1</sup> Key Laboratory of New Animal Drug Project of Gansu Province, Lanzhou 730050, China

<sup>2</sup> Key Laboratory of Veterinary Pharmaceutical Development, Ministry of Agriculture, Lanzhou 730050, China

<sup>3</sup> Lanzhou Institute of Husbandry and Pharmaceutical Sciences, Chinese Academy of Agricultural Sciences, Lanzhou 730050, China

\* Correspondence: zhangjiyu@caas.cn

**Abstract:** As an opportunistic pathogen, *Escherichia coli* (*E. coli*) forms biofilm that increases the virulence of bacteria and antibiotic resistance, posing a serious threat to human and animal health. Recently, ginkgetin (Gin) has been discovered to have antiinflammatory, antioxidant, and antitumor properties. In the present study, we evaluated the antibiofilm and antibacterial synergist of Gin against *E. coli*. Additionally, Alamar Blue assay combined with confocal laser scanning microscope (CLSM) and crystal violet (CV) staining was used to evaluate the effect of antibiofilm and antibacterial synergist against *E. coli*. Results showed that Gin reduces biofilm formation, exopolysaccharide (EPS) production, and motility against *E. coli* without limiting its growth and metabolic activity. Furthermore, we identified the inhibitory effect of Gin on AI-2 signaling molecule production, which showed apparent anti-quorum sensing (QS) properties. The qRT-PCR also indicated that Gin reduced the transcription of curli-related genes (*csgA*, *csgD*), flagella-formation genes (*flhC*, *flhD*, *fliC*, *fliM*), and QS-related genes (*luxS*, *lsrB*, *lsrK*, *lsrR*). Moreover, Gin showed obvious antibacterial synergism to overcome antibiotic resistance in *E. coli* with marketed antibiotics, including gentamicin, colistin B, and colistin E. These results suggested the potent antibiofilm and novel antibacterial synergist effect of Gin for treating *E. coli* infections.

**Keywords:** ginkgetin; *Escherichia coli*; antibiofilm; EPS; motility; quorum sensing; antibacterial synergist



**Citation:** Bai, Y.; Wang, W.; Shi, M.; Wei, X.; Zhou, X.; Li, B.; Zhang, J. Novel Antibiofilm Inhibitor Ginkgetin as an Antibacterial Synergist against *Escherichia coli*. *Int. J. Mol. Sci.* **2022**, *23*, 8809. <https://doi.org/10.3390/ijms23158809>

Academic Editor: Alfredo Ciccociola

Received: 26 July 2022

Accepted: 6 August 2022

Published: 8 August 2022

**Publisher's Note:** MDPI stays neutral with regard to jurisdictional claims in published maps and institutional affiliations.



**Copyright:** © 2022 by the authors. Licensee MDPI, Basel, Switzerland. This article is an open access article distributed under the terms and conditions of the Creative Commons Attribution (CC BY) license (<https://creativecommons.org/licenses/by/4.0/>).

## 1. Introduction

Due to the overuse of antibiotics, and bacterial mutations, multidrug-resistant bacteria have emerged as one of the world's most significant health problems today [1,2]. The National Institutes of Health (NIH) estimates that more than 16 million people die annually because of bacterial infections worldwide [3,4]. In addition, about 80% of them are linked to bacterial biofilm formation-mediated resistance [4]. The biofilm is an aggregate of microorganisms where microorganisms are adhered to the substrate and encapsulated within a self-produced matrix of EPS, proteins, and extracellular DNA (eDNA) [5–7]. It can enhance bacterial tolerance to antibiotics and innate immune response, ensuring survival and reproduction when antibiotic therapy stops [8]. In addition, biofilms contribute to adaptive mutations that may lead to antibiotic resistance [9]. Finally, the process associated with horizontal gene transfer increases in biofilm, increasing the range of plasmid stability and mobile genetic elements [10,11]. Biofilm-forming bacteria are less sensitive to antibiotics than planktonic cells once formed [12,13]. In turn, this has increased biofilm-producing bacteria's resistance to antimicrobial agents and reduced their effectiveness in treating biofilm-associated infections [14]. A study of biofilm bacteria found that they

could tolerate more than 1000 times as many antibiotics as planktonic bacteria [15]. Therefore, the biofilm has been considered a potential target for treating and managing clinical microbial infections, which has become an obvious drug target [16–18]. Combined with marketed antibiotics or alone, biofilm inhibitors reduce bacterial adhesion, thus reducing the persistence of infection, eliminating biofilm infection [19], and reducing the chance of drug-resistance development [20]. For example, combining L-arginine with gentamicin can effectively enhance the sensitivity of planktonic and biofilm bacteria to gentamicin [21]. Cinnamaldehyde was a biofilm inhibitor of *Pseudomonas aeruginosa*, and it appears to work synergistically with colistin. Resveratrol is a stilbene phytoantigen widely distributed in grapes, which has the characteristics of anti-QS and antibiofilm against *E. coli*. It can increase the effectiveness of different antibiotics against bacteria [22–24].

QS is a way for bacteria to coordinate population communication. It can regulate biofilm formation, virulence factor production, motility, and antibiotic resistance [25–28]. In Gram-negative and Gram-positive bacteria, AI-2 is considered to be a “universal” QS signaling molecule involved in inter- and intra-species communication. For most bacteria, the AI-2 QS system can regulate the virulence production, biofilm formation, and motility [29–32]. In *E. coli*, *pfs* and *luxS* are responsible for synthesizing AI-2 through the activated methyl cycle [33]. Together with other components of the *lsr* transport system, *lsrB* acts as a substrate-binding protein in the ABC transport system and plays a role in AI-2 internalization. *LsrK* is a putative kinase that phosphorylates DPD to phospho-DPD. Moreover, phospho-AI-2 binds to transcriptional repressor *lsrR* to induce transcription of the *lsr* gene [34].

Biosynthesis of curli fimbriae and cellulose, two factors important for bacterial adhesion and biofilm formation, is controlled by *csgD*, a positive regulator of *csgAB* [35–38]. For instance, inhibition of curli-dependent biofilm formation by myricetin derivatives was shown by decreases in the transcription of *csgA* and *csgD* [39]. Bacterial flagellum functions as a rotary motor dependent on electrochemical differences between specific ions across the cytoplasmic membrane, which is closely related to motility [40,41]. *flhDC* is an activator of the flagella regulatory cascade, the second set of transcription factors for flagellar, and is related to the synthesis of early gene products of flagella [42,43]. *fliC* is the major subunit of flagella filaments responsible for *E. coli* motility [44]. *fliM* is the flagellar components of the C ring, components of flagellar switch, enabling rotation and determining its direction [45].

*E. coli*, a common opportunistic Gram-negative intestinal pathogenic bacterium for humans and animals, often causes diarrhea, acute enteritis, sepsis, urinary tract infection, and a series of diseases, and is still a significant cause of intestinal illness in humans and animals [46,47]. At the same time, *E. coli* is also a common pathogen of biofilm infection [6]. It can not only adhere to medical devices (e.g., indwelling catheter, endotracheal intubation, etc.) to form chronic infection but also can form biofilms of the bladder and intestine, leading to persistent and chronic infections, causing a significant threat to livestock and poultry breeding and human health [46,48,49].

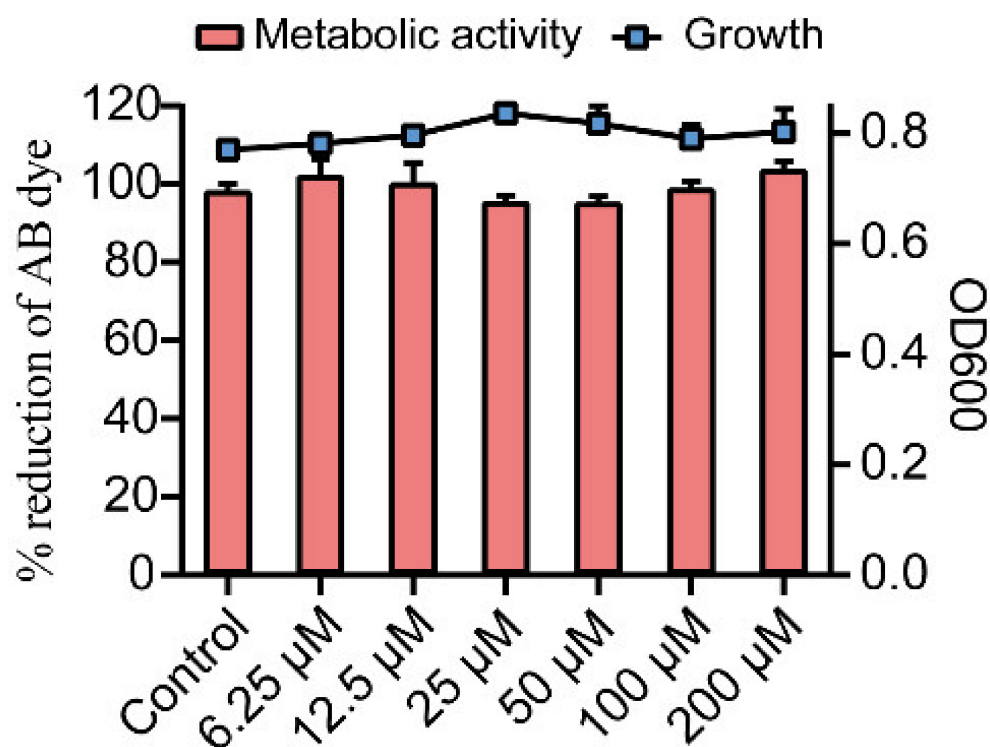
In response to these challenges caused by *E. coli*, the current study aims to use antivirulence therapy that reduces pathogenicity alone without any harmful impact on bacteria [50–53]. In addition, compounds with non-bactericidal properties have effects on reducing the likelihood of developing drug resistance and mutants [54].

In this context, it is reported that plant-derived compounds with a huge structural variety offer a wide range of benefits in handling infections [55–58]. Gin, a flavonoid isolated from the leaves of *Ginkgo biloba*, had antiinflammatory, antioxidant, antitumor, and other biological activities [59]. Despite many pharmacologic investigations, there have been no reports on the antibiofilm activity of Gin. Herein, this study unraveled the antibiofilm and antivirulence properties of Gin against *E. coli*, investigated the possible mechanism of Gin, and evaluated the synergistic effects of combining Gin with antibiotics.

## 2. Results

### 2.1. Effects of Gin on Growth and Metabolic Activity of *E. coli*

The effect of Gin on growth and metabolic activity of *E. coli* was measured by microbroth dilution and Alamar Blue (AB) assay. Gin did not significantly adversely affect the growth and metabolic activity of cells in the range of 6.25–100  $\mu\text{M}$  compared to the control group (Figure 1). These results revealed the non-bactericidal nature and unaltered metabolic activity of Gin on *E. coli*.



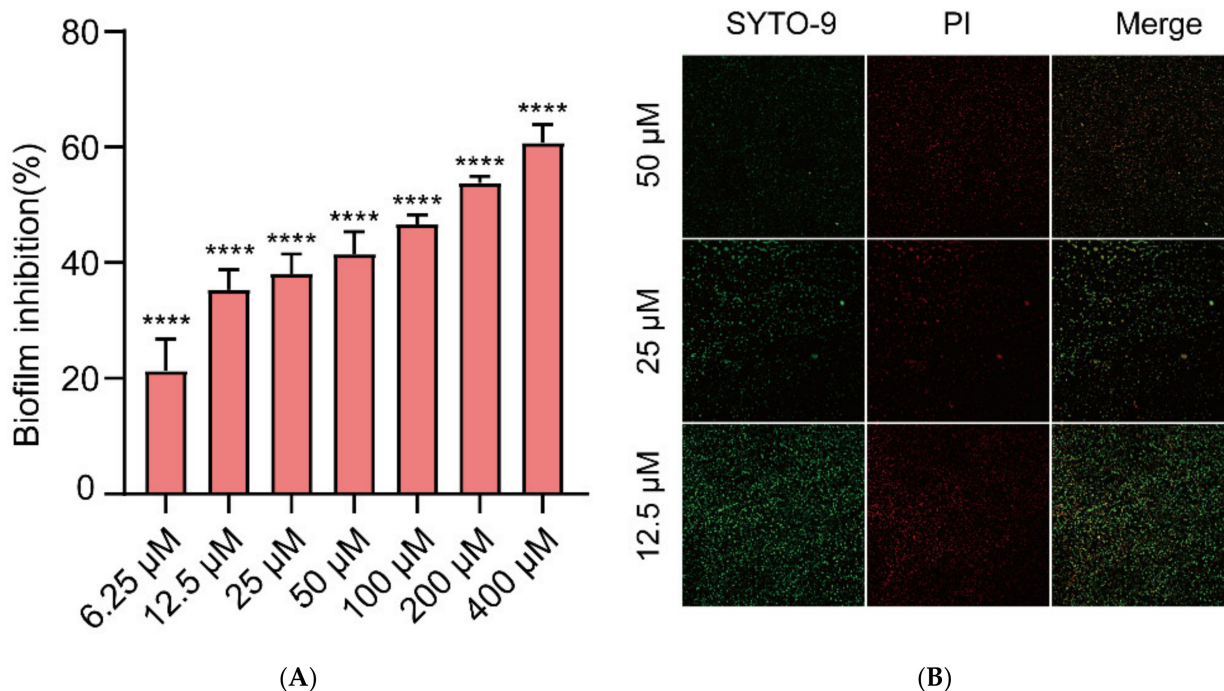
**Figure 1.** Growth and metabolic activity of *E. coli* in the presence of Gin. The line graph shows the growth of *E. coli* with Gin using a microbroth dilution assay. The bar graph shows the metabolic activity of *E. coli* based on the AB assay.  $n = 3$ . Results from all experiments are presented as the mean  $\pm$  SD of three replicates.

### 2.2. Inhibition of Biofilm Formation in *E. coli* by Gin

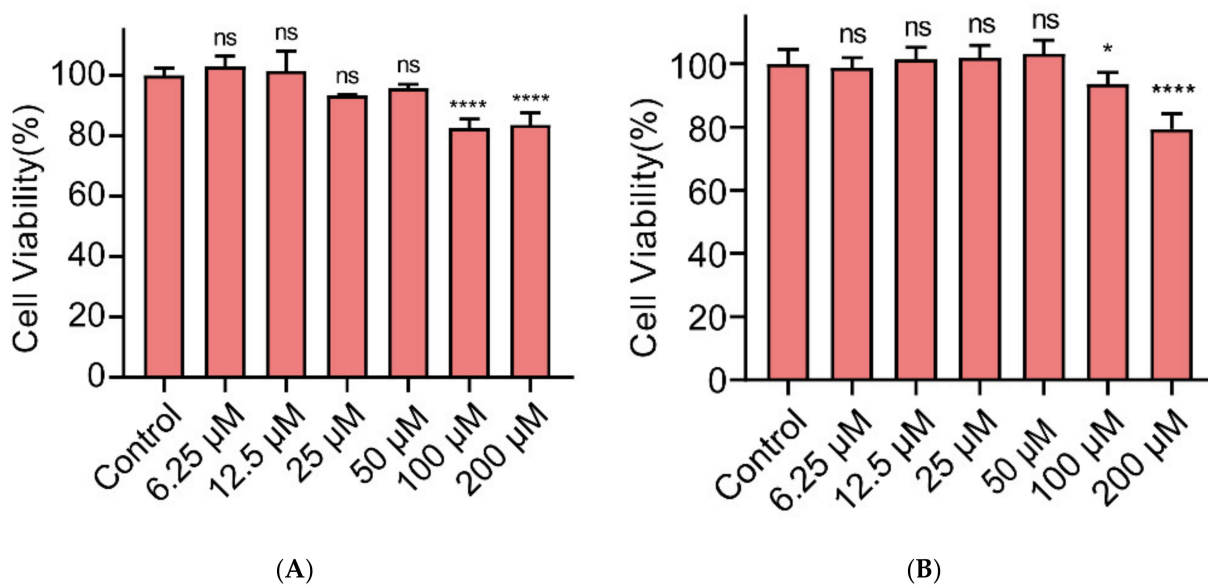
Different concentrations of Gin (6.25, 12.5, 25, 50, 100, 200, and 400  $\mu\text{M}$ ) were measured for antibiofilm activity by CV staining. This study showed that Gin treatment significantly inhibited the formation of *E. coli* ATCC 25922 in a dose-dependent manner (Figure 2A,  $p < 0.0001$ ). As low as 6.25  $\mu\text{M}$  of Gin was also found to be effective against the formation of biofilm (inhibition rate  $> 20\%$ ). To further observe the biofilm inhibitory effect of Gin, CLSM imaging analysis was conducted using fluorescent dye SYTO9 and propidium iodide (PI). The result showed that Gin significantly inhibited biofilm formation, as demonstrated by a negative gradient in green fluorescence in *E. coli* ATCC 25922 strains (Figure 2B). In short, the results showed that Gin inhibited biofilm formation.

### 2.3. Cytotoxicity of Gin on Caco-2 and IPEC-J2 Cells

Next, we examined whether Gin showed cytotoxicity toward Caco-2 and IPEC-J2 cells (Figure 3). Gin showed no cytotoxic effect at 50  $\mu\text{M}$  or lower concentrations, and cytotoxicity appeared at 100  $\mu\text{M}$  and 200  $\mu\text{M}$  ( $p < 0.05$  and  $p < 0.0001$ , respectively). These results indicate that Gin was not cytotoxic at concentrations effective in inhibiting biofilm formation.



**Figure 2.** Gin's effects on the growth of biofilms in *E. coli*. (A) Biofilm formation inhibition at various concentrations of Gin (6.25, 12.5, 25, 50, 100, 200, and 400 μM) for 24 h. \*\*\*\* =  $p < 0.0001$ . (B) CLSM image of *E. coli* biofilm at different concentrations of Gin (12.5, 5, and 50 μM) for 24 h.  $n = 3$ . Results from all experiments are presented as the mean  $\pm$  SD of three replicates.

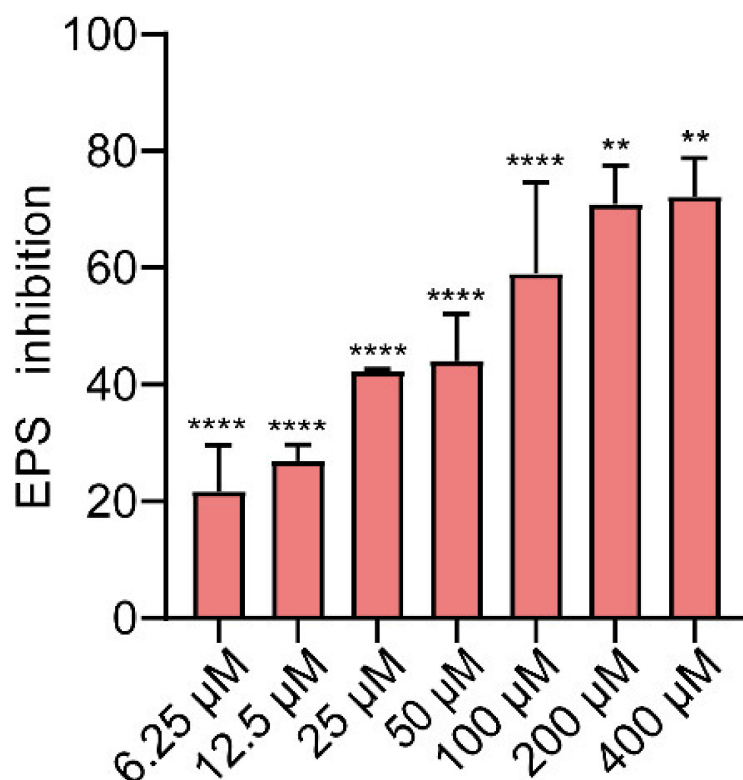


**Figure 3.** The cytotoxicity of Gin in (A) Caco-2 cell and (B) IPEC-J2 cell. Gin was applied to cells at various concentrations (0, 6.25, 12.5, 25, 50, 100, and 200 μM) for 24 h.  $n = 3$ . Results from all experiments are presented as the mean  $\pm$  SD of three replicates. ns: no significant, \* =  $p < 0.05$ , \*\*\*\* =  $p < 0.0001$ .

#### 2.4. Effects of Gin on EPS Production of *E. coli*

In biofilms, bacteria produce EPS that help entrap nutrients and serve as defense mechanisms [60]. EPS production in biofilms was studied using Ruthenium Red staining. Gin inhibited EPS production in a dose-dependent manner (Figure 4,  $p < 0.01$ , and  $p < 0.0001$ ). As low as 6.25 μM of Gin was also found to be effective against the production

of EPS (inhibition rate > 20%). This result was consistent with the inhibitory effect of Gin on *E. coli* biofilm. The results showed that Gin reduces the EPS production of *E. coli*.



**Figure 4.** Results of EPS inhibition (%) at various concentrations of Gin (0, 6.25, 12.5, 25, 50, 100, 200, and 400 μM) for 24 h.  $n = 3$ . Results from all experiments are presented as the mean  $\pm$  SD of three replicates. \*\* =  $p < 0.01$ , \*\*\*\* =  $p < 0.0001$ .

#### 2.5. Effects of Gin on the Motility of *E. coli*

Due to the closely related relationship between biofilm formation and bacterial motility, Gin was evaluated for its effect on motility and antibiofilm activity. As seen in Figure 5A, Gin at different concentrations significantly inhibited *E. coli* motility compared with a control group ( $p < 0.0001$ ). Further, the size of the halo zone was quantitatively determined (Figure 5B). The halo zone of Gin with different concentrations was significantly smaller compared with the control group ( $p < 0.0001$ ). This result proved that Gin could inhibit the production of biofilm by inhibiting the motility of *E. coli*.

#### 2.6. Effect of Gin on AI-2 Production in *E. coli*

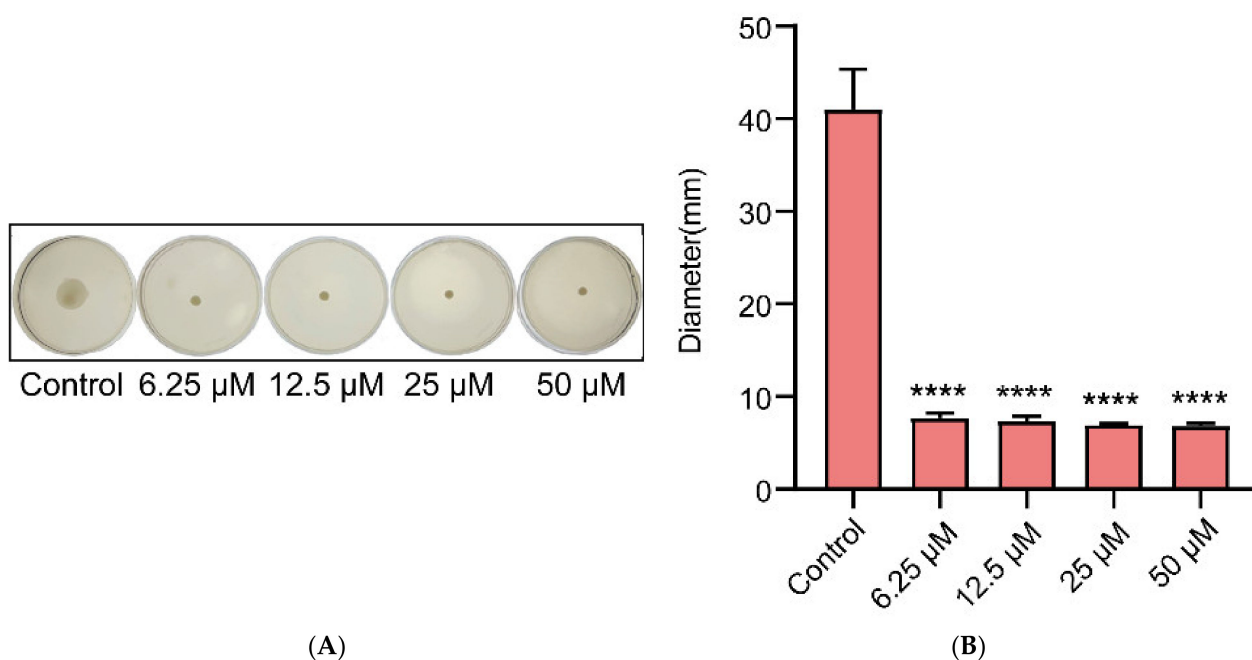
Biofilm formation by bacteria depends on QS [61]. Further, the bioluminescence assay of *V. harveyi* BB170 was used to determine whether Gin could affect AI-2 production of QS induced by *E. coli*. As shown in Figure 6, the inhibitory effect of Gin on bioluminescence was dose-dependent, with an  $IC_{50}$  value of 22.33 μM. Our data indicated that Gin inhibited the formation of biofilm by inhibiting the production of AI-2.

#### 2.7. Effect of Gin on the Transcription of Biofilm-Regulated Genes of *E. coli*

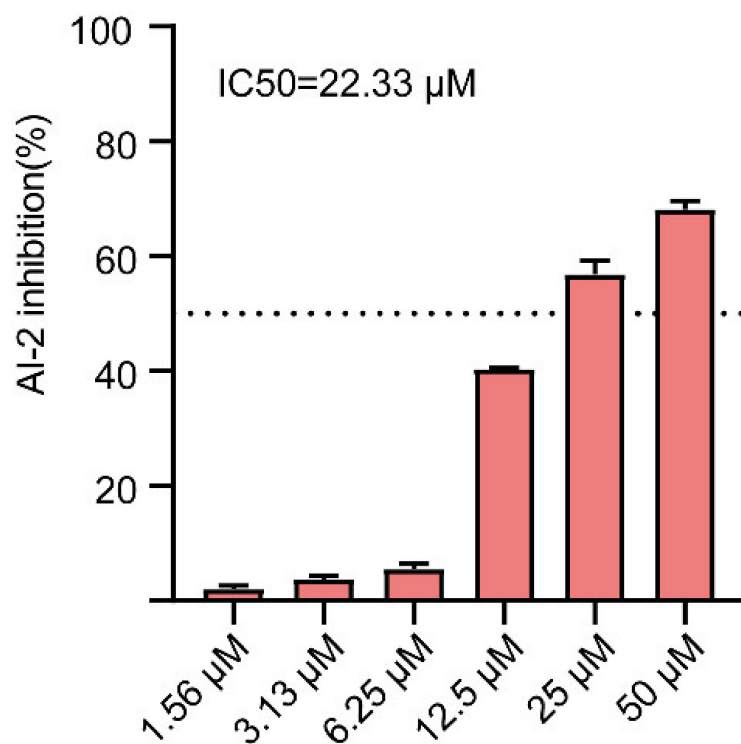
To elucidate how Gin might inhibit the formation of biofilms, we assessed the transcription of genes such as curli-regulated genes (*csgA*, *csgD*) and flagella-formation genes (*flhC*, *flhD*, *fliC*, *fliM*), and QS-related genes (*luxS*, *lsrB*, *lsrK*, *lsrR*) by qRT-PCR. As shown in Figure 7, Gin significantly inhibited curli-regulated genes *csgA*, and *csgD* (82%, 58%, respectively), flagella-formation genes *flhC*, *flhD*, *fliC*, and *fliM* (55%, 53%, 52%, and 79%, respectively) and QS-related genes *luxS*, *lsrB*, *lsrK*, and *lsrR* (44%, 60%, 56%, and 51%,



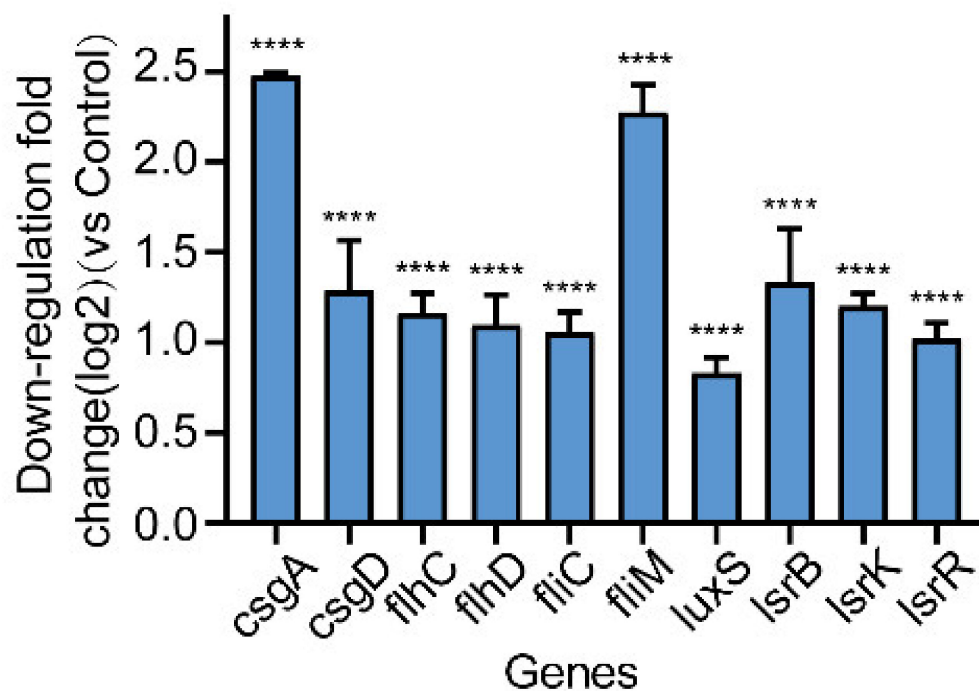
respectively). These results demonstrated that Gin inhibited the formation of biofilm by inhibiting the transcription of the curli genes, flagella genes, and QS genes of *E. coli*.



**Figure 5.** Motility inhibition of *E. coli* with Gin. (A) Images of motility following incubation with *E. coli* at various concentrations of Gin (0, 6.25, 12.5, 25, and 50 µM). (B) Quantitative estimation of motility based on the diameter of the halo zone.  $n = 3$ . Results from all experiments are presented as the mean  $\pm$  SD of three replicates. \*\*\*\* =  $p < 0.0001$ .



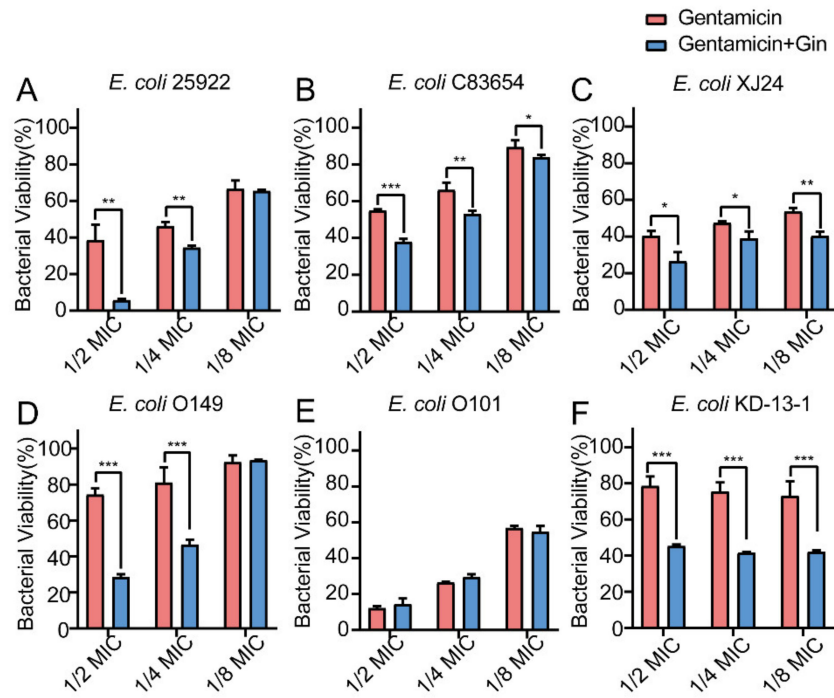
**Figure 6.** Inhibition of AI-2 activity treated with different concentrations of Gin (1.56, 3.13, 6.25, 12.5, 25, and 50 µM).  $n = 3$ . Results from all experiments are presented as the mean  $\pm$  SD of three replicates.



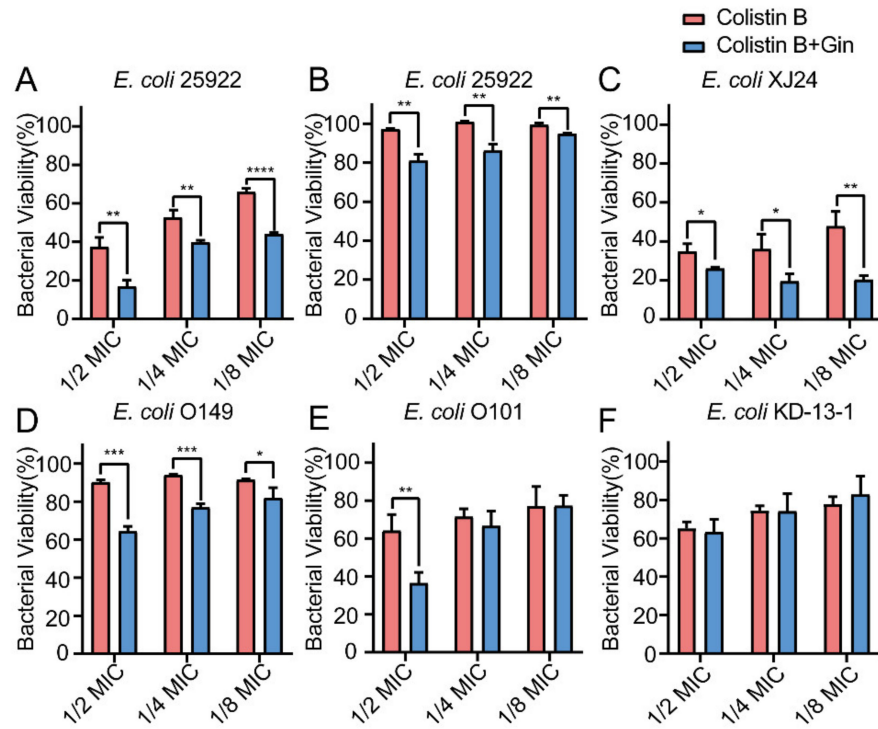
**Figure 7.** Effects of Gin on transcription of biofilm-regulated genes. The qRT-PCR results revealed significant difference in ten genes (*csgA*, *csgD*, *flhC*, *flhD*, *fliC*, *fliM*, *luxS*, *lsrB*, *lsrK*, and *lsrR*) as compared with the control. Results from all experiments are presented as the mean  $\pm$  SD of three replicates. \*\*\*\* =  $p < 0.0001$ .

### 2.8. Synergistic Effects of Gin in Combination with Antibiotics against Six *E. coli* Strains

Biofilm bacteria are known to be able to increase their antibiotic resistance. Therefore, it is urgently important to find a way to reduce biofilm formation by overcoming these increasingly serious infections. Here, by combining marketed antibiotics, including gentamicin and colistin, with the antibiofilm compound Gin, we can combat *E. coli* biofilms. The synergistic effects of Gin (50  $\mu$ M) combined with antibiotics on *E. coli* ATCC 25922 and five isolated clinical strains (*E. coli* XJ24, *E. coli* O101, *E. coli* O149, *E. coli* KD-13-1, and *E. coli* C83654) were investigated. The MIC of gentamicin, colistin B, and colistin E against *E. coli* ATCC 25922, XJ24, O101, O149, and KD-13-1 were tested (Table S1). As depicted in Figures 8–10, antibacterial activity revealed that combining gentamicin, colistin B, and colistin E (1/2 MIC, 1/4 MIC, 1/8 MIC) with antibiofilm inhibitor Gin on *E. coli* ATCC 25922 and five isolated clinical strains has a synergistic effect. Gin showed biofilm inhibition properties and significantly increased the antibacterial activities of gentamicin, colistin B, and colistin E. These results suggested that the antibiofilm compound Gin, in conjunction with conventional antibiotics, could be an efficient therapeutic strategy for tackling pathogens such as *E. coli*.

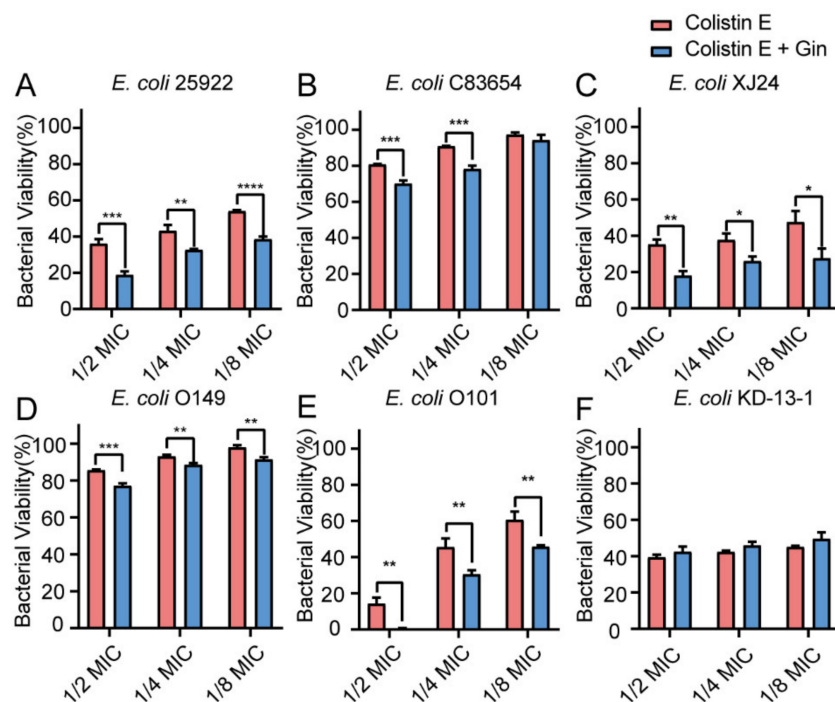


**Figure 8.** Effects of Gin (50  $\mu$ M) and Gentamicin on bacterial viability in six different *E. coli* strains. (A) ATCC 25922, (B) C83654, (C) XJ24, (D) O149, (E) O101, (F) KD-13-1.  $n = 3$ . Results from all experiments are presented as the mean  $\pm$  SD of three replicates. \* =  $p < 0.05$ , \*\* =  $p < 0.01$ , \*\*\* =  $p < 0.001$ .



**Figure 9.** Effects of Gin (50  $\mu$ M) and Colistin B on bacterial viability in six different *E. coli* strains. (A) ATCC 25922, (B) C83654, (C) XJ24, (D) O149, (E) O101, (F) KD-13-1.  $n = 3$ . Results from all experiments are presented as the mean  $\pm$  SD of three replicates. \* =  $p < 0.05$ , \*\* =  $p < 0.01$ , \*\*\* =  $p < 0.001$ , \*\*\*\* =  $p < 0.0001$ .





**Figure 10.** Effects of Gin (50  $\mu$ M) and Colistin E on bacterial viability in six different *E. coli* strains. (A) ATCC 25922, (B) C83654, (C) XJ24, (D) O149, (E) O101, (F) KD-13-1.  $n = 3$ . Results from all experiments are presented as the mean  $\pm$  SD of three replicates. \* =  $p < 0.05$ , \*\* =  $p < 0.01$ , \*\*\* =  $p < 0.001$ , \*\*\*\* =  $p < 0.0001$ .

### 3. Discussion

Antivirulence therapy is an important defense mechanism for the host against pathogenic bacteria infection [62,63]. Here, the present study was the first to report the antibiofilm and antivirulence activity of Gin against *E. coli* without affecting its growth. Furthermore, Gin did not exhibit cytotoxicity within the effective concentration range in IPEC-J2 and Caco-2 cells, resulting in a non-toxic effect in humans. We also demonstrated that Gin exhibited synergistic effects when combined with existing antibiotics (e.g., gentamicin, colistin B, and colistin E). Thus, we concluded that Gin presents antibiofilm and synergistic effects against *E. coli*.

EPS forms pathways for transporting metabolites and nutrients, maintaining biofilm structure, and protecting biofilms from external pressure. In addition, the secretion of EPS promotes bacteria's adhesion and colonization on nonbiological surfaces [64]. In our study, the effects of Gin on EPS production were dose-dependent, resulting in decreased bacterial colonization and biofilm formation. Additionally, it is reported that Gin effectively inhibited biomass of biofilm adhered to the cover slip surface by CLSM. These results showed that Gin could reduce biofilm formation by inhibiting the production of adhesive molecules [65,66].

The possible mechanism of Gin's antibiofilm activity was identified using gene transcription analysis. The qRT-PCR showed that Gin significantly down-regulated the transcription of flagella-formation genes (*flhC*, *flhD*, *fliC*, *fliM*), curli-related genes (*csgA*, *csgD*), and QS-related genes (*luxS*, *lsrB*, *lsrK*, *lsrR*) (Figure 7). The curli, the main component of a complex extracellular matrix produced by *E. coli*, is regulated by *csgA*, and *csgD* [67]. Results showed that Gin significant down-regulated the transcription of *csgA*, and *csgD*, thus inhibiting the curli production, which corresponded with the results of EPS production (Figure 4). Additionally, results also showed a significant reduction in the transcription of *flhC*, *flhD*, *fliC*, and *fliM*, indicating that Gin significantly inhibited the transcription of flagella-regulated genes in *E. coli*, thus reducing the motility of *E. coli*, which corresponded with the results obtained in semi-solid agar medium for the motility assay (Figure 5). Fur-

thermore, to assess whether Gin affects QS, we verified the effect of Gin on the transcription of *luxS*, *lsrB*, *lsrK*, and *lsrR*. AI-2 was a type II QS signal molecule in *E. coli*. It can affect phenotypes of *E. coli*, including biofilm formation, motility, virulence, bacterial adhesion, and biofilm matrix production [68–72]. Results showed that Gin reduces the transcription of *luxS*, *lsrB*, *lsrK*, and *lsrR*, which was consistent with the results obtained in the AI-2 bioluminescence assay (Figure 6). Combined with all these findings above, biofilm inhibition by Gin may be due to inhibiting QS and then regulating motility and the EPS production of *E. coli*. However, further research is needed to determine the exact mechanism of action.

Biofilm is a structured bacterial community, which poses a significant challenge to traditional antibiotics' effectiveness and is considered a breeding ground for antibiotic resistance. Combined with marketed antibiotics, biofilm inhibitors can enhance bacterial sensitivities to antibiotics [73]. The present study also proved that antibiofilm inhibitors could enhance the sensitivity of traditional antibiotics to resistant strains (Figures 8–10). The results suggested that combining antibiotics with antibiofilm compounds appears to be an effective therapeutic strategy for treating pathogen infections.

#### 4. Materials and Methods

##### 4.1. Materials, Bacterial Strains, and Cells

Gin used in this study was obtained from Shanghai Yuanye Bio-Technology Co., Ltd. (Shanghai, China). Based on the water solubility of Gin, it was dissolved in dimethyl sulfoxide (DMSO) at a final concentration was 40 mM, and the concentration of DMSO in LB medium was not more than 1%.

*E. coli* ATCC 25922 was obtained from American Type Culture Collection (ATCC). Clinical isolate strains *E. coli* O101, *E. coli* O149, *E. coli* C83654, *E. coli* XJ24, and *E. coli* KD-13-1 were isolated and maintained in our laboratory. Luria-Bertani (LB, HuanKai Microbial, Guangdong, China) and Luria-Bertani agar (LA, HuanKai Microbial, Guangdong, China) medium were used for the growth of all *E. coli* strains. *Vibrio harveyi* BB170 (*V. harveyi* BB170) and *V. harveyi* BB152 were gifts from Researcher Han Xiangnan (Shanghai Veterinary Research Institute, Chinese Academy of Agricultural Sciences), and were cultured under conditions containing AB medium supplemented with 1 mM L-arginine, 1% phosphate buffer (pH = 7.2), and 1% glycerol.

Caco-2 cell lines were obtained from ATCC and cultured under standard conditions using MEM medium with 20% FBS, 1 mM sodium pyruvate, 1 mM L-glutamine, 10 mM HEPES, and 1% non-essential amino acids. IPEC-J2 cell lines were obtained from Beina Chuanglian Biology Research Institute and cultured under standard conditions using DMEM medium with 10% FBS, 1 mM sodium pyruvate, and 1 mM L-glutamine, 10 mM HEPES, and 1% non-essential amino acids.

##### 4.2. Growth and Metabolic Activity

A microbroth dilution test was conducted to determine the growth effects of Gin by the Clinical & Laboratory Standards Institute (CLSI) [74]. In brief, cell suspensions of *E. coli* ( $10^6$  CFU/mL) and different concentrations of Gin were incubated for 24 h at 3 °C. A Multiskan Go Reader (Thermo Fisher Scientific, USA) was used to measure the absorbance at 600 nm following incubation.

In continuation, *E. coli* metabolic activity was analyzed by the Alamar Blue (AB) assay according to the previous method [75]. Briefly, cells were collected from each well using fresh 2 mL tubes followed by centrifugation for 10 min at 5000 rpm, washed twice with PBS (pH = 7.2), and then resuspended in 1 mL of PBS (pH = 7.2). Next, the tubes were incubated in dark conditions for 1 h at 37 °C, with 10 µL of AB dye (Invitrogen™, Thermo Fisher Scientific, USA) added. The blank control was PBS (pH = 7.2) containing only AB

dye. The metabolic activity was calculated based on the absorbance at 570 nm and 600 nm using the following formula:

$$\text{Metabolic activity}(\%) = \frac{\left( (E_{\text{oxi}}(\text{OD}570) \times T_{\text{OD}570}) - (E_{\text{oxi}}(\text{OD}600) \times T_{\text{OD}600}) \right)}{\left( (E_{\text{red}}(\text{OD}570) \times B_{\text{OD}570}) - (E_{\text{red}}(\text{OD}600) \times B_{\text{OD}600}) \right)} \times 100\%$$

$E_{\text{oxi}}(\text{OD}570)$ —extinction coefficient of AB in its oxidized form at 570 nm = 80,586;

$E_{\text{red}}(\text{OD}570)$ —extinction coefficient of AB in its reduced form at 570 nm = 155,677;

$E_{\text{oxi}}(\text{OD}600)$ —extinction coefficient of AB in its oxidized form at 600 nm = 117,216;

$E_{\text{red}}(\text{OD}600)$ —extinction coefficient of AB in its reduced form at 570 nm = 14,652;

$B$ —blank;  $T$ —samples.

### 4.3. Biofilm Assay

#### 4.3.1. Crystal Violet (CV) Staining

The previous method was slightly modified to detect the formation of *E. coli* biofilm using CV staining [76]. Briefly, *E. coli* ATCC 25922 was statically grown for 24 h at 37 °C. Next, the cells were resuspended at OD<sub>600</sub> of 1.0 and diluted about 100-fold. Subsequently, the diluted bacterial solution was mixed with Gin in a white 96-well plate (Corning Costar® 3599, Corning, Kennebunk, ME, USA). Cells underwent static incubation for 24 h at 37 °C, were washed three times with PBS (pH = 7.2) to eliminate the nonadherent cells, and fixed for 1 h at 60 °C. After fixation with methanol and staining with 0.1% CV for 30 min, the stained biofilm was rinsed with tap water to remove the dye that was not bound. The CV contained in biofilm was dissolved in 150 µL of 95% ethanol, and its absorbance at 570 nm was measured.

#### 4.3.2. Confocal Laser Scanning Microscopy

According to a previous report, we analyzed the *E. coli* biofilms using confocal laser scanning microscopy (CLSM) [77]. In brief, *E. coli* (10<sup>6</sup> CFU/mL) was inoculated in LB broth with or without Gin (0, 12.5, 25, and 50 µM) to form static biofilms on the cover slips for 24 h at 37°C in the 12-well plates. The biofilms were washed twice with PBS (pH = 7.2) before removing loosely bound cells, and stained using a BacLight Live/Dead viability kit (L7012, Invitrogen™, Thermo Fisher Scientific, Eugene, OR, USA) according to the procedure. Afterward, excess staining was removed by washing twice with PBS (pH = 7.2), and then the biofilm was imaged by CLSM (LSM800, Zeiss, Jena, Germany).

### 4.4. Cytotoxicity

Gin cytotoxicity was assessed in Caco-2 and IPEC-J2 cells using the CCK-8 assay. Caco-2 and IPEC-J2 cells at a density of 1 × 10<sup>5</sup> cells/mL were seeded into 96-well plates and cultured until the density of the cells reached approximately 80%. Then, the cells were treated for 24 h with 100 µL of Gin (6.25, 12.5, 25, 50, 100, 200 µM). Further, the cells with 10 µL of CCK-8 (MCE, Shanghai, China) were incubated for 1 h. After incubation, a Multiskan Go Reader (Thermo Fisher Scientific, Waltham, MA, USA) was used to measure absorbance at 450 nm.

### 4.5. EPS Production

The EPS production was quantitatively estimated by Ruthenium Red Staining [78]. Cell suspensions (100 µL) of *E. coli* (10<sup>6</sup> CFU/mL) and different concentrations of Gin were cultured for 24 h at 37 °C. Afterward, the cells were washed with PBS (pH = 7.2). In each well, biofilm cells were stained with 0.01% ruthenium red (Yuanye, Shanghai, China) by incubation at 37 °C for 60 min. Ruthenium red was served as a blank. Following that, the

solution containing the remaining stain was retransferred onto a new 96-well plate, and the absorbance at 450 nm was measured. EPS inhibition was calculated as:

$$\text{EPS inhibition(\%)} = \frac{\text{AS} - \text{AP}}{\text{AB} - \text{AP}} \times 100$$

where:

AB = absorbance of blank

AS = absorbance of sample

AP = absorbance of positive control

#### 4.6. Motility Assay

Gin was evaluated for its effects on *E. coli* motility as described earlier [79]. In brief, *E. coli* cultures overnight were adjusted to an OD<sub>600</sub> of 0.01. A semisolid agar media (0.3% LB agar) containing 12.5, 25, and 50 μM of Gin was used for the motility assay. A 1 μL measure of the diluted bacterial solution was inserted into the middle of the plate and then incubated for 24 h at 37 °C. The size of the halo zone compared to the control was used to evaluate the motility.

#### 4.7. AI-2 Bioluminescence Assay

According to previous reports, AI-2 bioluminescence assays were performed [80–82]. In brief, incubation of *E. coli* (10<sup>6</sup> CFU/mL) with 12.5, 25, or 50 μM of Gin for 16 h and centrifugation for 5 min at 12,000× g was performed. The supernatant was filtered with a 0.22 μm filter. The bioluminescence reporter *V. harveyi* BB170 grew in AB medium to OD<sub>600</sub> of 1.0~1.1 and was then diluted with fresh medium at 1:2500. A 20 μL measure of cell-free supernatant was mixed with 180 μL of the *V. harveyi* BB170 dilution in black 96-well plates (Jingan, Shanghai, China) and incubated for 3.5 h at 37 °C. Measurement of bioluminescence was conducted using a multi-purpose microplate reader (Enspire, PerkinElmer, Waltham, MA, USA). Controls were cellular-free supernatants of overnight *V. harveyi* BB152 cultures.

#### 4.8. qRT-PCR

qRT-PCR was used to study the effect of Gin on the transcription of biofilm-regulated genes of *E. coli*. *E. coli* was incubated with and without Gin for 24 h at 37 °C. Bacterial RNA Kit (Omega, Norcross, GA, USA) was used to extract total RNA. RNA quantity was measured by NanoDrop One<sup>C</sup> spectrophotometer (Thermo Scientific, USA) and RNA quality was determined via agarose gel electrophoresis. Further, the RNA was reverse-transcribed into cDNA with a PrimeScript<sup>TM</sup> RT reagent Kit with gDNA Eraser (TAKARA Corporation, Kusatsu, Japan). The TB Green<sup>®</sup> Premix Ex Taq<sup>TM</sup> II (Tli RNaseH Plus) (TAKARA Corporation, Kusatsu, Japan) was used for qRT-PCR. The 2-ΔΔCt method was used to assess relative changes in gene transcription levels. The *gapA* gene was used as an internal control [83]. In Table S2, the primers used in the current study are listed.

#### 4.9. Antibacterial Activity

Based on the previous method [75,84], we modified some procedures to evaluate the antibacterial effects of Gin. Briefly, after overnight culture, bacteria were diluted to an OD<sub>600</sub> of 0.01. The diluted bacterial solution was mixed with antibiotics (1/2 MIC, 1/4 MIC, 1/8 MIC) with or without Gin (50 μM). The metabolic activity of mixed suspensions was analyzed with the Alamar Blue (AB) assay after incubation for 16–18 h at 37 °C. Tests were conducted in triplicate.

#### 4.10. Statistical Analysis

Comparison between two groups was performed using multiple *t*-tests, while multiple comparisons were made using non-parametric one-way ANOVA in GraphPad Prism (GraphPad Prism 8.0.1, GraphPad, San Diego, CA, USA). Results from all experiments were presented as the mean ± SD of three replicates.

## 5. Conclusions

In summary, this study demonstrated that Gin has an antibiofilm and synergistic antibacterial effect against *E. coli*. These results showed that Gin could inhibit biofilm without affecting bacterial growth and metabolic activity. Besides, Gin inhibited the bacteria motility, EPS production, and QS of *E. coli*. More importantly, the antibacterial effects of combining gentamicin and colistin antibiotics with Gin were studied. The combination showed significantly synergistic effort against *E. coli* ATCC 25922 and five clinical isolates strains. In summary, these results indicate that Gin was an effective antibiofilm compound which can combine with marketed antibiotics to treat drug resistance caused by biofilms to treat *E. coli* infections in the future.

**Supplementary Materials:** The following supporting information can be downloaded at: <https://www.mdpi.com/article/10.3390/ijms23158809/s1>.

**Author Contributions:** Conceptualization, Y.B. and J.Z.; methodology, Y.B. and M.S.; validation, W.W., X.W. and M.S.; formal analysis, Y.B.; investigation, Y.B.; resources, J.Z. and W.W.; data curation, Y.B. and W.W.; writing—original draft preparation, Y.B.; writing—review and editing, W.W., X.Z. and B.L.; visualization, Y.B.; supervision, W.W. and J.Z.; project administration, J.Z.; funding acquisition, J.Z. and W.W. All authors have read and agreed to the published version of the manuscript.

**Funding:** This research was funded by the research on the National Natural Science Foundation of China, funding number 32102727, Drug Development and Clinical Drug Use Posts of the National Beef Yak Industry Technical System, funding number CARS-37, and Innovation Project of Chinese Academy of Agricultural Sciences, funding number 25-LZIHPS-05.

**Institutional Review Board Statement:** Not applicable.

**Informed Consent Statement:** Not applicable.

**Data Availability Statement:** Not applicable.

**Acknowledgments:** We thank Researcher Xiangan Han for providing the strains *V. harveyi* BB170 and *V. harveyi* BB152. Additionally, we are grateful for the suggestions made by anonymous reviewers.

**Conflicts of Interest:** The authors declare no conflict of interest.

## References

1. Larsson, D.G.J.; Flach, C.F. Antibiotic resistance in the environment. *Nat. Rev. Microbiol.* **2022**, *20*, 257–269. [CrossRef] [PubMed]
2. Fernández, L.; Hancock, R.E. Adaptive and mutational resistance: Role of porins and efflux pumps in drug resistance. *Clin. Microbiol. Rev.* **2012**, *25*, 661–681. [CrossRef] [PubMed]
3. Lewis, K. Persister cells, dormancy and infectious disease. *Nat. Rev. Microbiol.* **2007**, *5*, 48–56. [CrossRef] [PubMed]
4. Fong, J.; Yuan, M.; Jakobsen, T.H.; Mortensen, K.T.; Delos Santos, M.M.; Chua, S.L.; Yang, L.; Tan, C.H.; Nielsen, T.E.; Givskov, M. Disulfide bond-containing ajoene analogues as novel quorum sensing inhibitors of *Pseudomonas aeruginosa*. *J. Med. Chem.* **2017**, *60*, 215–227. [CrossRef]
5. Karygianni, L.; Ren, Z.; Koo, H.; Thurnheer, T. Biofilm matrixome: Extracellular components in structured microbial communities. *Trends Microbiol.* **2020**, *28*, 668–681. [CrossRef]
6. Hobley, L.; Harkins, C.; MacPhee, C.E.; Stanley-Wall, N.R. Giving structure to the biofilm matrix: An overview of individual strategies and emerging common themes. *FEMS Microbiol. Rev.* **2015**, *39*, 649–669. [CrossRef]
7. Flemming, H.C.; Wingender, J.; Szewzyk, U.; Steinberg, P.; Rice, S.A.; Kjelleberg, S. Biofilms: An emergent form of bacterial life. *Nat. Rev. Microbiol.* **2016**, *14*, 563–575. [CrossRef]
8. Ciofu, O.; Moser, C.; Jensen, P.; Høiby, N. Tolerance and resistance of microbial biofilms. *Nat. Rev. Microbiol.* **2022**, *35*, 322–332. [CrossRef]
9. Cohen, N.R.; Lobritz, M.A.; Collins, J.J. Microbial persistence and the road to drug resistance. *Cell Host Microbe* **2013**, *13*, 632–642. [CrossRef]
10. Lebeaux, D.; Ghigo, J.M.; Beloin, C. Biofilm-related infections: Bridging the gap between clinical management and fundamental aspects of recalcitrance toward antibiotics. *Microbiol. Mol. Biol. Rev.* **2014**, *78*, 510–543. [CrossRef]
11. Bakkeren, E.; Huisman, J.S.; Fattinger, S.A.; Hausmann, A.; Furter, M.; Egli, A.; Slack, E.; Sellin, M.E.; Bonhoeffer, S.; Regoes, R.R.; et al. *Salmonella* persisters promote the spread of antibiotic resistance plasmids in the gut. *Nature* **2019**, *573*, 276–280. [CrossRef]
12. Adnan, M.; Morton, G.; Singh, J.; Hadi, S. Contribution of *rpoS* and *bolA* genes in biofilm formation in *Escherichia coli* K-12 MG1655. *Mol. Cell Biochem.* **2010**, *342*, 207–213. [CrossRef]



13. Adnan, M.; Sousa, A.M.; Machado, I.; Pereira, M.O.; Khan, S.; Morton, G.; Hadi, S. Role of *bolA* and *rpoS* genes in biofilm formation and adherence pattern by *Escherichia coli* K-12 MG1655 on polypropylene, stainless steel, and silicone surfaces. *Acta Microbiol. Immunol. Hung.* **2017**, *64*, 179–189. [[CrossRef](#)]
14. Meesilp, N.; Mesil, N. Effect of microbial sanitizers for reducing biofilm formation of *Staphylococcus aureus* and *Pseudomonas aeruginosa* on stainless steel by cultivation with UHT milk. *Food Sci. Biotechnol.* **2019**, *28*, 289–296. [[CrossRef](#)]
15. Sharma, D.; Misba, L.; Khan, A.U. Antibiotics versus biofilm: An emerging battleground in microbial communities. *Antimicrob Resist. Infect Control.* **2019**, *8*, 76. [[CrossRef](#)]
16. Vuotto, C.; Donelli, G. Novel treatment strategies for biofilm-based infections. *Drugs* **2019**, *79*, 1635–1655. [[CrossRef](#)]
17. Jiang, Y.; Geng, M.; Bai, L. Targeting biofilms therapy: Current research strategies and development hurdles. *Microorganisms* **2020**, *8*, 1222. [[CrossRef](#)]
18. Grandclement, C.; Tannieres, M.; Morera, S.; Dessaux, Y.; Faure, D. Quorum quenching: Role in nature and applied developments. *FEMS Microbiol. Rev.* **2016**, *40*, 86–116. [[CrossRef](#)]
19. Beloin, C.; Renard, S.; Ghigo, J.M.; Lebeaux, D. Novel approaches to combat bacterial biofilms. *Curr. Opin. Pharmacol.* **2014**, *18*, 61–68. [[CrossRef](#)]
20. Chen, X.; Zhang, M.; Zhou, C.; Kallenbach, N.R.; Ren, D. Control of bacterial persister cells by Trp/Arg-containing antimicrobial peptides. *Appl. Environ. Microbiol.* **2011**, *77*, 4878–4885. [[CrossRef](#)]
21. Lebeaux, D.; Chauhan, A.; Letoffe, S.; Fischer, F.; de Reuse, H.; Beloin, C.; Ghigo, J.M. PH-mediated potentiation of aminoglycosides kills bacterial persisters and eradicates in vivo biofilms. *J. Infect. Dis.* **2014**, *210*, 1357–1366. [[CrossRef](#)]
22. Ma, D.S.L.; Tan, L.T.H.; Chan, K.G.; Yap, W.H.; Pusparajah, P.; Chuah, L.H.; Ming, L.C.; Khan, T.M.; Lee, L.H.; Goh, B.H. Resveratrol-potential antibacterial agent against foodborne pathogens. *Front Pharmacol.* **2018**, *9*, 102. [[CrossRef](#)]
23. Zhou, J.W.; Chen, T.T.; Tan, X.J.; Sheng, J.Y.; Jia, A.Q. Can the quorum sensing inhibitor resveratrol function as an aminoglycoside antibiotic accelerant against *Pseudomonas aeruginosa*? *Int. J. Antimicrob Agents* **2018**, *52*, 35–41. [[CrossRef](#)]
24. Vestergaard, M.; Ingmer, H. Antibacterial and antifungal properties of resveratrol. *Int. J. Antimicrob Agents* **2019**, *53*, 716–723. [[CrossRef](#)] [[PubMed](#)]
25. Pappenfort, K.; Bassler, B.L. Quorum sensing signal-response systems in Gram-negative bacteria. *Nat. Rev. Microbiol.* **2016**, *14*, 576–588. [[CrossRef](#)]
26. Wang, W.; Huang, X.; Yang, H.; Niu, X.; Li, D.; Yang, C.; Li, L.; Zou, L.; Qiu, Z.; Wu, S.; et al. Antibacterial activity and anti-quorum sensing mediated phenotype in response to essential oil from *Melaleuca bracteata* leaves. *Int. J. Mol. Sci.* **2019**, *20*, 5696. [[CrossRef](#)]
27. Minich, A.; Levarski, Z.; Mikulášová, M.; Straka, M.; Liptáková, A.; Stuchlík, S. Complex analysis of vanillin and syringic acid as natural antimicrobial agents against *Staphylococcus epidermidis* biofilms. *Int. J. Mol. Sci.* **2022**, *23*, 1816. [[CrossRef](#)]
28. Manner, S.; Fallarero, A. Screening of natural product derivatives identifies two structurally related flavonoids as potent quorum sensing inhibitors against Gram-negative bacteria. *Int. J. Mol. Sci.* **2018**, *19*, 1346. [[CrossRef](#)]
29. Bassler, B.L. Small talk. cell-to-cell communication in bacteria. *Cell* **2002**, *109*, 421–424. [[CrossRef](#)]
30. Choudhary, S.; Schmidt-Dannert, C. Applications of quorum sensing in biotechnology. *Appl. Microbiol. Biotechnol.* **2010**, *86*, 1267–1279. [[CrossRef](#)] [[PubMed](#)]
31. Reading, N.C.; Sperandio, V. Quorum sensing: The many languages of bacteria. *FEMS Microbiol. Lett.* **2006**, *254*, 1–11. [[CrossRef](#)] [[PubMed](#)]
32. Sturme, M.H.; Kleerebezem, M.; Nakayama, J.; Akkermans, A.D.; Vaughn, E.E.; de Vos, W.M. Cell to cell communication by autoinducing peptides in gram-positive bacteria. *Antonie Van Leeuwenhoek* **2002**, *81*, 233–243. [[CrossRef](#)] [[PubMed](#)]
33. Peng, L.Y.; Yuan, M.; Wu, Z.M.; Song, K.; Zhang, C.L.; An, Q.; Xia, F.; Yu, J.L.; Yi, P.F.; Fu, B.D.; et al. Anti-bacterial activity of baicalin against APEC through inhibition of quorum sensing and inflammatory responses. *Sci. Rep.* **2019**, *9*, 4063. [[CrossRef](#)] [[PubMed](#)]
34. Roy, V.; Fernandes, R.; Tsao, C.Y.; Bentley, W.E. Cross species quorum quenching using a native AI-2 processing enzyme. *ACS Chem. Biol.* **2010**, *5*, 223–232. [[CrossRef](#)]
35. Römling, U.; Rohde, M.; Olsén, A.; Normark, S.; Reinköster, J. *AgfD*, the checkpoint of multicellular and aggregative behaviour in *Salmonella typhimurium* regulates at least two independent pathways. *Mol. Microbiol.* **2000**, *36*, 10–23. [[CrossRef](#)]
36. Ogasawara, H.; Yamamoto, K.; Ishihama, A. Role of the biofilm master regulator *csgD* in cross-regulation between biofilm formation and flagellar synthesis. *J. Bacteriol.* **2011**, *193*, 2587–2597. [[CrossRef](#)]
37. Barnhart, M.M.; Chapman, M.R. Curli biogenesis and function. *Ann. Rev. Microbiol.* **2006**, *60*, 131–147. [[CrossRef](#)]
38. Blanco, L.P.; Evans, M.L.; Smith, D.R.; Badtke, M.P.; Chapman, M.R. Diversity, biogenesis and function of microbial amyloids. *Trends Microbiol.* **2012**, *20*, 66–73. [[CrossRef](#)]
39. Arita-Morioka, K.I.; Yamanaka, K.; Mizunoe, Y.; Tanaka, Y.; Ogura, T.; Sugimoto, S. Inhibitory effects of myricetin derivatives on curli-dependent biofilm formation in *Escherichia coli*. *Sci. Rep.* **2018**, *8*, 8452. [[CrossRef](#)]
40. Guttenplan, S.B.; Kearns, D.B. Regulation of flagellar motility during biofilm formation. *FEMS Microbiol. Rev.* **2013**, *37*, 849–871. [[CrossRef](#)]
41. Wood, T.K.; González Barrios, A.F.; Herzberg, M.; Lee, J. Motility influences biofilm architecture in *Escherichia coli*. *Appl. Microbiol. Biotechnol.* **2006**, *72*, 361–367. [[CrossRef](#)]
42. Zhao, K.; Liu, M.; Burgess, R.R. Adaptation in bacterial flagellar and motility systems: From regulon members to ‘foraging’-like behavior in *E. coli*. *Nucleic Acids Res.* **2007**, *35*, 4441–4452. [[CrossRef](#)]

43. Guan, G.H.; Wang, Y.; Chen, W.F.; Li, Y. Microbial physiology teaching exploration—Taking the teaching of the structure and function of bacterial flagella as an example. *Microbiol. China* **2016**, *43*, 756–761.
44. Chakraborty, S.; Randall, A.; Vickers, T.J.; Molina, D.; Harro, C.D.; DeNearing, B.; Brubaker, J.; Sack, D.A.; Bourgeois, A.L.; Felgner, P.L.; et al. Human experimental challenge with enterotoxigenic *Escherichia coli* elicits immune responses to canonical and novel antigens relevant to vaccine development. *J. Infect. Dis.* **2018**, *218*, 1436–1446. [[CrossRef](#)]
45. Henderson, L.D.; Matthews-Palmer, T.R.S.; Gulbranson, C.J.; Ribardo, D.A.; Beeby, M.; Hendrixson, D.R. Diversification of *Campylobacter jejuni* flagellar C-ring composition impacts its structure and function in motility, flagellar assembly, and cellular processes. *mBio* **2020**, *11*, e02286-19. [[CrossRef](#)]
46. Nataro, J.P.; Kaper, J.B. Diarrheagenic *Escherichia coli*. *Clin. Microbiol. Rev.* **1998**, *11*, 142–201. [[CrossRef](#)]
47. Braz, V.S.; Melchior, K.; Moreira, C.G. *Escherichia coli* as a multifaceted pathogenic and versatile bacterium. *Front Cell Infect. Microbiol.* **2020**, *10*, 548492. [[CrossRef](#)]
48. Anderson, G.G.; Palermo, J.J.; Schilling, J.D.; Roth, R.; Heuser, J.; Hultgren, S.J. Intracellular bacterial biofilm-like pods in urinary tract infections. *Science* **2003**, *301*, 105–107. [[CrossRef](#)]
49. Ageorges, V.; Monteiro, R.; Leroy, S.; Burgess, C.M.; Pizza, M.; Chaucheyras-Durand, F.; Desvaux, M. Molecular determinants of surface colonisation in diarrhoeagenic *Escherichia coli* (DEC): From bacterial adhesion to biofilm formation. *FEMS Microbiol. Rev.* **2020**, *44*, 314–350. [[CrossRef](#)]
50. Silva, L.N.; Zimmer, K.R.; Macedo, A.J.; Trentin, D.S. Plant natural products targeting bacterial virulence factors. *Chem. Rev.* **2016**, *116*, 9162–9236. [[CrossRef](#)]
51. Escaich, S. Novel agents to inhibit microbial virulence and pathogenicity. *Expert Opin. Ther. Pat.* **2010**, *20*, 1401–1418. [[CrossRef](#)] [[PubMed](#)]
52. Cegelski, L.; Marshall, G.R.; Eldridge, G.R.; Hultgren, S.J. The biology and future prospects of antivirulence therapies. *Nat. Rev. Microbiol.* **2008**, *6*, 17–27. [[CrossRef](#)] [[PubMed](#)]
53. Buroni, S.; Chiarelli, L.R. Antivirulence compounds: A future direction to overcome antibiotic resistance? *Future Microbiol.* **2020**, *15*, 299–301. [[CrossRef](#)] [[PubMed](#)]
54. Patsilinos, A.; Artini, M.; Papa, R.; Sabatino, M.; Božović, M.; Garzoli, S.; Vrenna, G.; Buzzi, R.; Manfredini, S.; Selan, L.; et al. Machine learning analyses on data including essential oil chemical composition and in vitro experimental antibiofilm activities against *Staphylococcus species*. *Molecules* **2019**, *24*, 890. [[CrossRef](#)]
55. Abdullah, A.; Asghar, A.; Algburi, A.; Huang, Q.; Ahmad, T.; Zhong, H.; Javed, H.U.; Ermakov, A.M.; Chikindas, M.L. Antibiofilm potential of *Elletaria cardamomum* essential oil against *Escherichia coli* O157:H7 and *Salmonella Typhimurium* JSG 1748. *Front Microbiol.* **2021**, *12*, 620227. [[CrossRef](#)]
56. Townsley, L.; Shank, E.A. Natural-product antibiotics: Cues for modulating bacterial biofilm formation. *Trends Microbiol.* **2017**, *25*, 1016–1026. [[CrossRef](#)]
57. Ruan, X.; Deng, X.; Tan, M.; Wang, Y.; Hu, J.; Sun, Y.; Yu, C.; Zhang, M.; Jiang, N.; Jiang, R. Effect of resveratrol on the biofilm formation and physiological properties of avian pathogenic *Escherichia coli*. *J. Proteom.* **2021**, *249*, 104357. [[CrossRef](#)]
58. Kim, U.; Kim, J.H.; Oh, S.W. Review of multi-species biofilm formation from foodborne pathogens: Multi-species biofilms and removal methodology. *Crit. Rev. Food Sci. Nutr.* **2021**, *62*, 5783–5793. [[CrossRef](#)]
59. Adnan, M.; Rasul, A.; Hussain, G.; Shah, M.A.; Zahoor, M.K.; Anwar, H.; Sarfraz, I.; Riaz, A.; Manzoor, M.; Adem, Ş.; et al. Ginkgetin: A natural biflavone with versatile pharmacological activities. *Food Chem. Toxicol.* **2020**, *145*, 111642. [[CrossRef](#)]
60. Jayathilake, P.G.; Jana, S.; Rushton, S.; Swailes, D.; Bridgens, B.; Curtis, T.; Chen, J. Extracellular polymeric substance production and aggregated bacteria colonization influence the competition of microbes in biofilms. *Front. Microbiol.* **2017**, *8*, 1865. [[CrossRef](#)]
61. Miller, M.B.; Bassler, B.L. Quorum sensing in bacteria. *Ann. Rev. Microbiol.* **2001**, *55*, 165–199. [[CrossRef](#)]
62. Spellberg, B.; Bartlett, J.G.; Gilbert, D.N. The future of antibiotics and resistance. *N. Engl. J. Med.* **2013**, *368*, 299–302. [[CrossRef](#)]
63. Laxminarayan, R.; Duse, A.; Watal, C.; Zaidi, A.K.; Wertheim, H.F.; Sumpradit, N.; Vlieghe, E.; Hara, G.L.; Gould, I.M.; Goossens, H.; et al. Antibiotic resistance—the need for global solutions. *Lancet Infect. Dis.* **2013**, *13*, 1057–1098. [[CrossRef](#)]
64. Vu, B.; Chen, M.; Crawford, R.J.; Ivanova, E.P. Bacterial extracellular polysaccharides involved in biofilm formation. *Molecules* **2009**, *14*, 2535–2554. [[CrossRef](#)]
65. Christner, M.; Franke, G.C.; Schommer, N.N.; Wendt, U.; Wegert, K.; Pehle, P.; Kroll, G.; Schulze, C.; Buck, F.; Mack, D.; et al. The giant extracellular matrix-binding protein of *Staphylococcus epidermidis* mediates biofilm accumulation and attachment to fibronectin. *Mol. Microbiol.* **2010**, *75*, 187–207. [[CrossRef](#)]
66. Hussain, M.; Herrmann, M.; von Eiff, C.; Perdreau-Remington, F.; Peters, G. A 140-kilodalton extracellular protein is essential for the accumulation of *Staphylococcus epidermidis* strains on surfaces. *Infect Immun.* **1997**, *65*, 519–524. [[CrossRef](#)]
67. Miller, A.L.; Bessho, S.; Grando, K.; Tükel, Ç. Microbiome or infections: Amyloid-containing biofilms as a trigger for complex human diseases. *Front Immunol.* **2021**, *12*, 638867. [[CrossRef](#)]
68. Gonzalez Barrios, A.F.; Zuo, R.; Hashimoto, Y.; Yang, L.; Bentley, W.E.; Wood, T.K. Autoinducer 2 controls biofilm formation in *Escherichia coli* through a novel motility quorum-sensing regulator (*mqsR*, B3022). *J. Bacteriol.* **2006**, *188*, 305–316. [[CrossRef](#)]
69. Bansal, T.; Jesudhasan, P.; Pillai, S.; Wood, T.K.; Jayaraman, A. Temporal regulation of enterohemorrhagic *Escherichia coli* virulence mediated by autoinducer-2. *Appl. Microbiol. Biotechnol.* **2008**, *78*, 811–819. [[CrossRef](#)]
70. Hardie, K.R.; Cooksley, C.; Green, A.D.; Winzer, K. Autoinducer 2 activity in *Escherichia coli* culture supernatants can be actively reduced despite maintenance of an active synthase, *luxS*. *Microbiology* **2003**, *149 Pt 3*, 715–728. [[CrossRef](#)]

71. Drees, S.L.; Li, C.; Prasetya, F.; Saleem, M.; Dreveny, I.; Williams, P.; Hennecke, U.; Emsley, J.; Fetzner, S. *PqsBC*, a condensing enzyme in the biosynthesis of the *Pseudomonas aeruginosa* quinolone signal: Crystal structure, inhibition, and reaction mechanism. *J. Biol. Chem.* **2016**, *291*, 6610–6624. [[CrossRef](#)]
72. Ma, R.; Qiu, S.; Jiang, Q.; Sun, H.; Xue, T.; Cai, G.; Sun, B. AI-2 quorum sensing negatively regulates *rbf* expression and biofilm formation in *Staphylococcus aureus*. *Int. J. Med. Microbiol.* **2017**, *307*, 257–267. [[CrossRef](#)]
73. Brackman, G.; Cos, P.; Maes, L.; Nelis, H.J.; Coenye, T. Quorum sensing inhibitors increase the susceptibility of bacterial biofilms to antibiotics in vitro and in vivo. *Antimicrob Agents Chemother.* **2011**, *55*, 2655–2661. [[CrossRef](#)]
74. CLSI. *Methods for Dilution Antimicrobial Susceptibility Tests for Bacteria That Grow Aerobically*, 11th ed.; Clinical and Laboratory Standards Institute: Wayne, PA, USA, 2018.
75. Swetha, T.K.; Pooranachithra, M.; Subramenium, G.A.; Divya, V.; Balamurugan, K.; Pandian, S.K. Umbelliferone impedes biofilm formation and virulence of methicillin-resistant *Staphylococcus epidermidis* via impairment of initial attachment and intercellular adhesion. *Front. Cell Infect Microbiol.* **2019**, *9*, 357. [[CrossRef](#)]
76. Zuo, J.; Yin, H.; Hu, J.; Miao, J.; Chen, Z.; Qi, K.; Wang, Z.; Gong, J.; Phouthapane, V.; Jiang, W.; et al. *Lsr* operon is associated with AI-2 transfer and pathogenicity in avian pathogenic *Escherichia coli*. *Vet. Res.* **2019**, *50*, 109. [[CrossRef](#)]
77. Zhang, P.; Xu, C.; Zhou, X.; Qi, R.; Liu, L.; Lv, F.; Li, Z.; Wang, S. Cationic conjugated polymers for enhancing beneficial bacteria adhesion and biofilm formation in gut microbiota. *Colloids Surf. B Biointerfaces* **2020**, *188*, 110815. [[CrossRef](#)]
78. Adnan, M.; Patel, M.; Deshpande, S.; Alreshidi, M.; Siddiqui, A.J.; Reddy, M.N.; Emira, N.; De Feo, V. Effect of adiantum philip-pense extract on biofilm formation, adhesion with its antibacterial activities against foodborne pathogens, and characterization of bioactive metabolites: An in vitro-in silico approach. *Front. Microbiol.* **2020**, *11*, 823. [[CrossRef](#)] [[PubMed](#)]
79. Vikram, A.; Jayaprakasha, G.K.; Uckoo, R.M.; Patil, B.S. Inhibition of *Escherichia coli* O157:H7 motility and biofilm by  $\beta$ -sitosterol glucoside. *Biochim. Biophys. Acta* **2013**, *1830*, 5219–5228. [[CrossRef](#)] [[PubMed](#)]
80. Taga, M.E.; Xavier, K.B. Methods for analysis of bacterial autoinducer-2 production. *Curr. Protoc. Microbiol.* **2011**, *23*, 1C-1. [[CrossRef](#)] [[PubMed](#)]
81. Bassler, B.L.; Wright, M.; Silverman, M.R. Multiple signalling systems controlling expression of luminescence in *Vibrio harveyi*: Sequence and function of genes encoding a second sensory pathway. *Mol. Microbiol.* **1994**, *13*, 273–286. [[CrossRef](#)] [[PubMed](#)]
82. Surette, M.G.; Miller, M.B.; Bassler, B.L. Quorum sensing in *Escherichia coli*, *Salmonella typhimurium*, and *Vibrio harveyi*: A new family of genes responsible for autoinducer production. *Proc. Natl. Acad. Sci. USA* **1999**, *96*, 1639–1644. [[CrossRef](#)]
83. Hu, J.; Wang, B.; Fang, X.; Means, W.J.; McCormick, R.J.; Gomelsky, M.; Zhu, M.J. C-di-GMP signaling regulates *E. coli* O157:H7 adhesion to colonic epithelium. *Vet. Microbiol.* **2013**, *164*, 344–351. [[CrossRef](#)]
84. Liu, J.; Hou, J.S.; Chang, Y.Q.; Peng, L.J.; Zhang, X.Y.; Miao, Z.Y.; Sun, P.H.; Lin, J.; Chen, W.M. New *pqs* quorum sensing system inhibitor as an antibacterial synergist against multidrug-resistant *Pseudomonas aeruginosa*. *J. Med. Chem.* **2021**, *65*, 688–709. [[CrossRef](#)]