

# The impact of CYP2D6-predicted phenotype on tamoxifen treatment outcome in patients with metastatic breast cancer

LA Lammers<sup>1</sup>, RHJ Mathijssen<sup>\*2</sup>, T van Gelder<sup>1,3</sup>, MJ Bijl<sup>1,4</sup>, A-JM de Graan<sup>2</sup>, C Seynaeve<sup>2</sup>, MA van Fessem<sup>5</sup>, EM Berns<sup>2</sup>, AG Vulto<sup>1</sup> and RHN van Schaik<sup>5</sup>

<sup>1</sup>Department of Hospital Pharmacy, Erasmus MC, University Hospital, P.O. Box 2040, 3000 CA, Rotterdam, The Netherlands; <sup>2</sup>Department of Medical Oncology, Erasmus MC, University Hospital, P.O. Box 2040, 3000 CA, Rotterdam, The Netherlands; <sup>3</sup>Department of Internal Medicine, Erasmus MC, University Hospital, P.O. Box 2040, 3000 CA, Rotterdam, The Netherlands; <sup>4</sup>Department of Epidemiology, Erasmus MC, University Hospital, P.O. Box 2040, 3000 CA, Rotterdam, The Netherlands and <sup>5</sup>Department of Clinical Chemistry, Erasmus MC, University Hospital, P.O. Box 2040, 3000 CA, Rotterdam, The Netherlands

**BACKGROUND:** Cytochrome P450 2D6 (CYP2D6) has a crucial role in the metabolic conversion of tamoxifen into the active metabolite endoxifen. In this cohort study, the effect of CYP2D6-predicted phenotype, defined as the combined effect of CYP2D6 genetic variation and concomitant use of CYP2D6-inhibiting medication, on time to breast cancer progression (TTP) and overall survival (OS) in women who use tamoxifen for metastatic breast cancer (MBC) was examined.

**METHODS:** We selected patients treated with tamoxifen (40 mg per day) for hormone receptor-positive MBC from whom a blood sample for pharmacogenetic analysis (CYP2D6\*3, \*4, \*5, \*6, \*10 and \*41) was available. Patient charts ( $n = 102$ ) were reviewed to assess TTP and OS, and to determine whether CYP2D6 inhibitors were prescribed during tamoxifen treatment.

**RESULTS:** OS was significantly shorter in patients with a poor CYP2D6 metaboliser phenotype, compared with extensive metabolisers (HR = 2.09;  $P = 0.034$ ; 95% CI: 1.06–4.12). Co-administration of CYP2D6 inhibitors alone was also associated with a worse OS (HR = 3.55;  $P = 0.002$ ; 95% CI: 1.59–7.96) and TTP (HR = 2.97;  $P = 0.008$ ; 95% CI: 1.33–6.67) compared with patients without CYP2D6 inhibitors.

**CONCLUSION:** CYP2D6 phenotype is an important predictor of treatment outcome in women who are receiving tamoxifen for MBC. Co-administration of CYP2D6 inhibitors worsens treatment outcome of tamoxifen and should therefore be handled with care.

*British Journal of Cancer* (2010) **103**, 765–771. doi:10.1038/sj.bjc.6605800 www.bjcancer.com

Published online 10 August 2010

© 2010 Cancer Research UK

**Keywords:** tamoxifen; CYP2D6; pharmacogenetics; metastatic breast cancer; phenotype

## INTRODUCTION

Breast cancer is the most common type of cancer among women worldwide with nearly 1.2 million new diagnoses each year (Kamangar *et al*, 2006). Tumour expression of the oestrogen receptor (ER) and/or progesterone receptor (PR) has an important role in the choice for systemic treatment. In ER-positive and/or PR-positive breast cancer, anti-oestrogenic therapy has proven efficacy in both the adjuvant and metastatic setting (Riggs and Hartmann, 2003).

Tamoxifen is a so-called selective oestrogen-receptor modifier (Mortimer *et al*, 2007) with potent anti-oestrogenic action, which competes with oestrogen at the ER, resulting in the inhibition of growth of ER-positive breast cancer cells (Riggs and Hartmann, 2003). The hormonal receptor status therefore is an important predictive factor for the response of tamoxifen in breast cancer (Fisher *et al*, 2005). Tamoxifen is considered a pro-drug, metabolised by phase I enzymes (cytochrome P450 (CYP2D6)

iso-enzymes 3A4, 2D6 and others) into metabolites including *N*-desmethyl-tamoxifen (NDM-TAM), 4-hydroxy-tamoxifen (4-OH-TAM) and finally the more potent metabolite 4-hydroxy-NDM-TAM(endoxifen). Both 4-OH-TAM and endoxifen are known to have a 30–100 times higher anti-oestrogen activity than tamoxifen. However, on average, plasma concentrations of endoxifen are approximately 10 times higher than those of 4-OH-TAM, making endoxifen the most potent metabolite of tamoxifen (Borges *et al*, 2006). In addition, endoxifen was recently proven to be the most potent metabolite in tamoxifen therapy with respect to the growth inhibition of breast cancer cells (Wu *et al*, 2009). Cytochrome P450 2D6 has a crucial role in the formation of endoxifen (Goetz *et al*, 2008). The activity of this enzyme is partly determined by the presence of polymorphisms in the *CYP2D6* gene, resulting in differences in the metabolising capacity. On the basis of CYP2D6-metabolising capacity, the population can be divided into four phenotypes. Ultrarapid metabolisers have duplicated *CYP2D6* genes, and thus express excessive amounts of functional enzyme. Carriers of two functional alleles exhibit normal enzyme activity and are classified as extensive metabolisers (EMs). Patients with one functional and one non-functional allele or two decreased activity alleles

\*Correspondence: Dr RHJ Mathijssen; E-mail: a.mathijssen@erasmusmc.nl  
Received 23 April 2010; revised 17 June 2010; accepted 18 June 2010;  
published online 10 August 2010

are referred to as intermediate metabolisers (IMs). Individuals with two non-functional alleles of the gene lack CYP2D6 enzymatic activity and, therefore, are classified as poor metabolisers (PMs). In Caucasians, *CYP2D6\*4* allele is the most common non-functional allele, having an allele frequency of about 20% (Bradford, 2002). Other dysfunctional alleles that are (less frequently) seen in the Caucasian population are *CYP2D6\*3*, *CYP2D6\*5* and *CYP2D6\*6*, with allele frequencies of 1–2%, 2–7% and 1%, respectively (Bradford, 2002).

A few years ago, an association between CYP2D6 genotype and clinical outcome in tamoxifen-treated breast cancer patients was described by Goetz *et al* (2005). Postmenopausal women with the homozygous *CYP2D6\*4* genotype (PM) using tamoxifen tend to have a higher risk of breast cancer recurrence than EMs. This finding was confirmed by Schroth *et al* (2007) in a retrospective study among patients using tamoxifen as an adjuvant therapy and by Newman *et al* (2008). Women with the dysfunctional CYP2D6 alleles \*4, \*5, \*10 and \*41 had an increased risk of breast cancer recurrence and worse relapse-free survival rates. More recently, a multicenter study including retrospectively and prospectively collected patient data also confirmed an association between CYP2D6 variation and clinical outcome in women receiving adjuvant tamoxifen (Schroth *et al*, 2009). However, also negative results or even opposite findings have been published (Nowell *et al*, 2005; Wegman *et al*, 2005, 2007) and recently reviewed (Dezentje *et al*, 2009; Hoskins *et al*, 2009).

Besides the CYP2D6 genotype, concomitant use of CYP2D6-inhibiting medication may also be an important factor influencing the clinical outcome of tamoxifen treatment. Important CYP2D6-inhibiting drugs are, for instance, selective serotonin reuptake inhibitors (SSRIs), which may be used in breast cancer patients to treat depression or hot flashes; a common side effect of tamoxifen (Loprinzi *et al*, 2000). Goetz *et al* (2007) have shown that poor CYP2D6 metabolisers, due to genetic polymorphisms and/or CYP2D6-inhibiting medication (further defined as 'predicted phenotype'), using tamoxifen as adjuvant therapy do have a significantly shorter time to breast cancer recurrence than EMs. Furthermore, a presented review of medical records involving breast cancer patients treated with tamoxifen showed that concomitant use of CYP2D6-inhibiting medication increased the risk of breast cancer recurrence (Aubert *et al*, 2009). In addition, in a recently published cohort study, paroxetine use during tamoxifen treatment was associated with an increased risk of death from breast cancer (Kelly *et al*, 2010). In contrast, Dezentje *et al* (2010) reviewed Dutch pharmacy data and reported opposite findings. They found no evidence that CYP2D6 inhibitors increase the risk of breast cancer recurrence.

These available results clearly warrant further research to test the hypothesis whether CYP2D6 phenotype is associated with the clinical outcome in tamoxifen-treated breast cancer patients. Moreover, studies in patients with metastatic disease are very scarce. To our knowledge, so far only one study reported on the effect of CYP2D6 genotype in a small number of Asian breast cancer patients using tamoxifen for metastatic disease evaluating the association of the dysfunctional allele *CYP2D6\*10/\*10* (commonly occurring in the Eastern people in contrast to Caucasians) with clinical outcome (Lim *et al*, 2007). It was found that the PM phenotype based on genotype was associated with a significantly shorter time to progression (TTP). A correlation between CYP2D6 phenotype, and clinical outcome in metastatic breast cancer (MBC) patients of Caucasian origin has not been described yet. Therefore, the present study aimed to investigate the effect of CYP2D6-predicted phenotype, defined as the combined effect of the most common CYP2D6 genetic polymorphisms in Caucasians (\*3, \*4, \*5, \*6, \*10 and \*41) and concomitant use of CYP2D6-inhibiting medication, on TTP and overall survival (OS) in female MBC patients treated with tamoxifen.

## MATERIALS AND METHODS

### Patients and study design

A consecutive series of patients treated with tamoxifen for breast cancer at the Daniel den Hoed cancer centre of the Erasmus MC University hospital, were sampled for pharmacogenetic analysis between 2000 and 2008. From that dataset we selected all patients with MBC, having a positive hormone receptor status (ER and/or PR), and receiving a tamoxifen dose of 40 mg per day. In The Netherlands, 40 mg per day is the standard tamoxifen dose for MBC patients compared with 20 mg per day in the adjuvant setting. As the terminal elimination half-life of tamoxifen for a single dose is 5–7 days, and the time to reach steady state plasma concentrations is 3–4 weeks, an observational period of 1 month may be necessary before the effect of hormonal therapy can be seen (Morello *et al*, 2003). Therefore, participants using tamoxifen for <30 days were also excluded. Patients started with tamoxifen between 1986 and 2008. This study was approved by the local medical ethics board (study numbers AZR00/168A and MEC02/1002), and all patients gave written informed consent. Patient charts were reviewed to record the following data: age at start of tamoxifen therapy for metastatic disease, race, ER and PR status, treatments before tamoxifen therapy, number and location of metastatic sites, CYP2D6-inhibiting co-medication, TTP and OS.

Participants were monitored from the start of first tamoxifen prescription for MBC until death, or until the end of the study period (July 2009), whichever came first. Time to progression was defined as the time from first tamoxifen prescription for MBC to the documentation of progression, which was assessed by standard RECIST criteria (Hayward *et al*, 1977). Overall survival was defined as the time from first tamoxifen prescription for MBC to death due to any cause.

Patient charts were also reviewed to determine whether the following known CYP2D6 inhibitors were co-administered during the time that tamoxifen was used for metastatic disease: fluoxetine, paroxetine and bupropion (all strong inhibitors), duloxetine and terbinafine (moderate inhibitors), amiodarone, cimetidine, citalopram and sertraline (all weak inhibitors) (Flockhart, 2007).

### CYP2D6 genotyping

All patients were genotyped for the *CYP2D6\*3*, \*4, \*5 and \*6 polymorphisms, which will detect over 95% of CYP2D6 PMs and also for the CYP2D6 polymorphisms \*10 and \*41 that are associated with reduced enzyme activity. The source of genomic DNA was EDTA blood and the genotyping was done using Taqman allelic discrimination assays on the ABI Prism 7000 (Applied Biosystems, Nieuwerkerk aan den IJssel, the Netherlands) Sequence detection system. Primers and probes were designed by Applied Biosystems using their Assay-by-Design service. Polymerase chain reactions (PCR) were carried out in a reaction volume of 10.0  $\mu$ l, containing assay-specific primers, allele-specific Taqman MGB probes (Applied Biosystems), Abgene Absolute QPCR Rox Mix (Applied Biosystems) and genomic DNA (1 ng). The thermal profile consisted of an initial denaturation step at 95°C for 15 min, followed by 40 cycles of denaturation at 92°C for 15 s and annealing and extension at 60°C for 1 min. The \*5 was determined using long range PCR on 20 ng genomic DNA using primers 5'-CACACCGGGCACCTGTACTCCTCA-3', 5'-CAGGCATGAGCTAAGGCACCCAGAC-3', 5'-GTTATCCCAGAAGGCTTTCAGGCTTCA-3' and 5'-GCCGACTGAGCCCTGGGAGGTAGGTA-3' with PCR profile 7 min 94°C, followed by 35 cycles of 1 min 94°C, 1 min 65°C annealing and 5 min 68°C elongation using rTth DNA polymerase (Applied Biosystems). PCR products were analysed on an EtBr gel. Presence of a *CYP2D6* gene deletion (\*5) can be observed by the presence of a 3.5 kb fragment. A 5.1 kb fragment will always be amplified, and serves as an internal

control. Genotypes were scored through measuring allele-specific fluorescence using the SDS 2.2.2 software for allelic discrimination (Applied Biosystems).

### CYP2D6 phenotyping

On the basis of CYP2D6 genotype in combination with concomitant use of CYP2D6-inhibiting medication, patients were classified into three phenotype groups (see Table 2). As an observational period of 3 or even 6 months may be necessary before the effect of hormonal therapy could be seen, concomitant CYP2D6 inhibitor use was defined as a minimum of 6 months overlap between tamoxifen and the CYP2D6 inhibitor (Muss *et al*, 1994). Women without a dysfunctional (*CYP2D6*\*3, \*4, \*5 or \*6) allele and who were not using a CYP2D6 inhibitor for at least 6 months (or until tamoxifen was stopped) were defined as EMs. Intermediate metabolisers (i) carry *CYP2D6*\*10 or \*41 alleles either homozygous or in combination with a dysfunctional allele or (ii) were heterozygous for the *CYP2D6*\*3, \*4, \*5 or \*6 allele (\*3/*wt*, \*4/*wt*, \*5/*wt* or \*6/*wt*) and did not use a CYP2D6 inhibitor or (iii) had no dysfunctional alleles but were using a weak or moderate CYP2D6 inhibitor. Women classified as PMs had (i) two dysfunctional alleles (for example, *CYP2D6*\*3/\*3, \*3/\*4 or \*4/\*4), or (ii) one dysfunctional allele (*CYP2D6*\*3/*wt*, \*4/*wt*, \*5/*wt* or \*6/*wt*) with concurrent use of a moderate CYP2D6 inhibitor or (iii) a functional genotype (*wt/wt*) with co-administration of a strong CYP2D6 inhibitor (Goetz *et al*, 2007).

### Statistical analysis

Deviations from Hardy–Weinberg equilibrium and differences in allele frequencies of the *CYP2D6*\*3, \*4, \*5, \*6, \*10 and \*41 alleles were analysed using  $\chi^2$ -tests. The effect of CYP2D6 genotype, CYP2D6-inhibiting co-medication and CYP2D6 phenotype (EM, IM, PM) on TTP and OS was assessed using Cox proportional hazards models. Analyses were adjusted for age. Confounders were adjusted for in the analysis if they caused a change in the point estimate of more than 10 percent. Kaplan–Meier estimates and log-rank test were used in univariate analysis of TTP and OS. The 5% cut-off level was chosen as significance level. All analyses were carried out using SPSS software (version 15.0, Chicago, IL, USA).

## RESULTS

Of the 116 patients treated with tamoxifen for MBC enrolled, 104 patients had a positive hormone receptor status. Two patients discontinued tamoxifen treatment within 30 days and were excluded from the analysis. The characteristics of the 102 patients treated with tamoxifen for MBC that met the inclusion criteria are described in Table 1. Patients started with tamoxifen for metastatic disease between 1986 and 2008. CYP2D6 genotype was determined in 99 of these patients. In our population, the allele frequencies of the *CYP2D6*\*3, \*4, \*5, \*6, \*10 and \*41 alleles were 3.5, 21.7, 1.5, 1.0, 1.5 and 6.6%, respectively, which is in line with earlier published data (Bradford, 2002). Genotype distributions were in Hardy–Weinberg Equilibrium (*CYP2D6*\*3, \*4, \*5, \*6, \*10 and \*41:  $\chi^2 = 0.46$ ;  $P = 0.25$ ). Co-administration of CYP2D6 inhibitors (paroxetine, fluoxetine, sertraline and citalopram) occurred in 6.9% of patients ( $N = 7$ , mean duration of co-administration: 11.5 months; range: 6 months to 1.6 years).

On the basis of CYP2D6-predicted phenotype definition, 48.5% of the patients were classified as EMs, 38.4% as IMs and 13.1% as PMs (Table 2). Patients used tamoxifen for a mean period of time of 2.8 years (range: 1.6 months to 17 years); being the longest (3.0 years) in the EMs and the shortest (1.7 years) in the PMs. All patients stopped tamoxifen because of the disease progression.

**Table 1** Baseline Characteristics

Variable	Number of patients (%) n = 102
Age first tamoxifen use for metastatic breast cancer, average (s.d.)	51.8 (9.1) years
<i>Race</i>	
Caucasian	97 (95.1)
Asian	4 (3.9)
African	1 (1.0)
<i>Previous treatments</i>	
Operative procedure	
Mastectomy	41 (40.2)
Lumpectomy	53 (52.0)
None	8 (7.8)
Previous adjuvant therapy	
Radiotherapy	33 (32.3)
Chemotherapy	22 (21.6)
Both chemotherapy and radiotherapy	21 (20.6)
None	26 (25.5)
Previous therapy for metastatic disease	
Radiotherapy	17 (16.6)
Chemotherapy	21 (20.6)
Both chemotherapy and radiotherapy	11 (10.8)
None	53 (52.0)
<i>No. of metastatic sites</i>	
1	69 (67.6)
2	27 (26.5)
3	6 (5.9)
<i>Metastatic site</i>	
Lymph	27 (19.1)
Bone	62 (44.0)
Lung	30 (21.3)
Liver	13 (9.2)
Skin	8 (5.7)
Other	1 (0.7)
<i>CYP2D6 genotypes</i>	
wt/wt	45 (44.1)
wt/*3	2 (2.0)
*3/*3	0 (0.0)
*3/*4	4 (3.9)
*3/*4	1 (1.0)
wt/*4	25 (24.5)
*4/*4	4 (3.9)
*4/*6	1 (1.0)
*4/*10	1 (1.0)
*4/*4	4 (3.9)
wt/*5	3 (2.9)
*5/*5	0 (0.0)
wt/*6	1 (1.0)
*6/*6	0 (0.0)
wt/*10	2 (2.0)
wt/*4	6 (5.9)
Unknown	3 (2.9)
<i>CYP2D6-inhibiting co-medication</i>	7 (6.9)
Strong	5 (4.9) <sup>a</sup>
Moderate	0 (0.0)
Weak	2 (2.0) <sup>b</sup>

Abbreviations: CYP2D6 = cytochrome P450 2D6; wt = wild type. <sup>a</sup>Paroxetine (n = 4), fluoxetine (n = 1). <sup>b</sup>Citalopram (n = 1), sertraline (n = 1).

In Table 3, the associations between the predicted phenotypes and TTP and OS, respectively, are shown. The OS in EMs and IMs was not significantly different (HR = 0.87;  $P = 0.62$ ; 95% CI: 0.50–1.50). However, OS was significantly shorter for the PMs compared with EMs (HR = 2.09;  $P = 0.034$ ; 95% CI: 1.06–4.12).

**Table 2** CYP2D6-predicted phenotype based on the combination of the CYP2D6 genotype and concomitant use of a CYP2D6 inhibitor

CYP2D6 phenotype <sup>a</sup>	CYP2D6 genotype	Strong inhibitor	Moderate inhibitor	Weak inhibitor	N = 99 (%)
EM	wt/wt	No	No	No	41 (41.4)
	wt/*10	No	No	No	2 (2.0)
	wt/*41	No	No	No	5 (5.1)
IM	wt/*3	No	No	No	1 (1.0)
	wt/*4	No	No	No	25 (25.3)
	wt/*5	No	No	No	3 (3.0)
	wt/*6	No	No	No	1 (1.0)
	*3/*41	No	No	No	1 (1.0)
	*4/*10	No	No	No	1 (1.0)
PM	*4/*41	No	No	No	4 (4.0)
	wt/wt	No	No	Yes	2 (2.0)
	*3/*4	No	No	No	3 (3.0)
	*3/*4	Yes	No	No	1 (1.0)
	*4/*4	No	No	No	4 (4.0)
	*4/*6	No	No	No	1 (1.0)
	wt/*3	Yes	No	No	1 (1.0)
	wt/*41	Yes	No	No	1 (1.0)
	wt/wt	Yes	No	No	2 (2.0)

Abbreviations: CYP2D6 = cytochrome P450 2D6; EM = extensive metabolisers; IM = intermediate metabolisers; PM = poor metabolisers; wt = wild type. <sup>a</sup>On the basis of CYP2D6 genotype (CYP2D6\*3, \*4, \*5, \*6, \*10 and \*41) and concomitant use of CYP2D6-inhibiting medication.

**Table 3** Association between CYP2D6 predicted phenotype, time to progression and overall survival

CYP2D6 phenotype <sup>a</sup>	Time to progression			Overall survival		
	Cases (n = 99)	HR <sup>b</sup> (95% CI)	P-value	Cases (n = 67)	HR <sup>b</sup> (95% CI)	P-value
EM	48	1.00 (ref)		33	1.00 (ref)	
IM	38	0.99 (0.64–1.55)	0.98	22	0.87 (0.50–1.50)	0.62
PM	13	1.69 (0.90–3.19)	0.11	12	2.09 (1.06–4.12)	0.03

Abbreviations: CI = confidence interval; CYP2D6 = cytochrome P450 2D6; EM = extensive metabolisers; HR = hazards ratio; IM = intermediate metabolisers; PM = poor metabolisers; ref = reference. <sup>a</sup>On the basis of CYP2D6 genotype (CYP2D6\*3, \*4, \*5, \*6, \*10 and \*41) and concomitant use of CYP2D6-inhibiting medication. <sup>b</sup>HRs were calculated using Cox-proportional hazards models and were adjusted for age at the index date.

Although not significantly different, PMs tended to have a worse TTP (HR = 1.69;  $P = 0.11$ ; 95% CI: 0.90–3.19) compared with EMs.

As intermediate and EMs had a comparable TTP and OS, both were taken together in the Kaplan–Meier estimates. The median OS-time period for PMs was 5.0 years (95% CI: 4.1–5.9) compared with 7.9 years (95% CI: 6.2–9.5) for the other predicted phenotype groups, which is statistically significantly different ( $P = 0.012$ ) (Figure 1). For PMs, the Kaplan–Meier estimate shows a non-significantly shorter median TTP compared with the combined group of other predicted phenotypes (IMs + EMs), being 1.4 years (95% CI: 0.7–2.2) vs 1.8 years (95% CI: 1.4–2.3), respectively, ( $P = 0.089$ ), as shown in Figure 1.

Although there was no significant association between CYP2D6 genotype and TTP or OS (HR = 1.29;  $P = 0.49$ ; 95% CI: 0.63–2.66 and HR = 1.38;  $P = 0.42$ ; 95% CI: 0.63–2.99, respectively), the seven patients using tamoxifen together with a CYP2D6 inhibitor had a significantly worse TTP (HR = 2.97;  $P = 0.008$ ; 95% CI: 1.33–6.67) and OS (HR = 3.55;  $P = 0.002$ ; 95% CI: 1.59–7.96) compared with tamoxifen users without co-administration of CYP2D6 inhibitors (Table 4).

Previous treatment, race and number of metastatic sites, as mentioned in Table 1, did not influence our model as a confounder or effect modifier.

## DISCUSSION

In this study, we showed that MBC patients with a positive hormone receptor status treated with tamoxifen and having a CYP2D6 'PM-predicted phenotype' have a statistically significant

shorter OS than patients with an intermediate or extensive phenotype. In addition, we showed that patients using tamoxifen together with CYP2D6 inhibitors have a significantly shorter progression-free and worse OS compared with tamoxifen users not concomitantly using CYP2D6 inhibitors.

To our knowledge, this is the first time that the combined effect (predicted phenotype) of genotype and/or co-medication on tamoxifen treatment outcome has been investigated in the specific group of hormone-sensitive MBC patients. Besides this, the FDA approved fixed dose of tamoxifen used (40 mg per day) contributed to a homogeneous selection of patients in this study. Most studies published focused at a tamoxifen dose of 20 mg per day. In our study, EM and IM are not significantly different in terms of OS or TTP, although differences between these groups have been found in other studies when the tamoxifen dose is 20 mg per day (Goetz *et al*, 2005; Schroth *et al*, 2009). It is possible that 40 mg per day allows the IM patients to have a steady state concentration similar to EM or at least high enough to benefit from the treatment.

Previous studies have shown that adjuvant tamoxifen users with a PM status (only based on CYP2D6 genotype) have an increased risk of breast cancer recurrence and mortality (Goetz *et al*, 2005; Lim *et al*, 2007; Schroth *et al*, 2007; Bijl *et al*, 2009). In our study, no association was found between solely CYP2D6 genotype and TTP or OS in MBC patients. This may be explained by the relatively small group of CYP2D6 PMs in our set of patients. An alternative explanation can be that the effect of genotype observed in the adjuvant setting is less pronounced in MBC. On the other hand, with respect to the adjuvant setting, several other studies also did not show an association between CYP2D6 genotype and

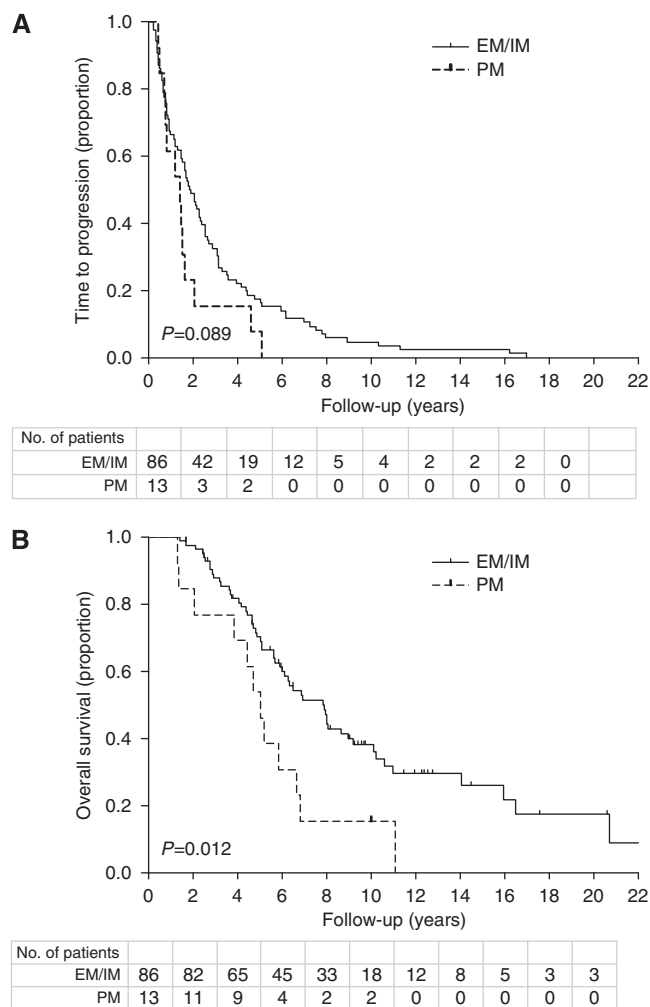
tamoxifen efficacy. In two studies on adjuvant tamoxifen treatment, no differences were found in survival rates between PMs and other metabolising groups (Nowell *et al*, 2005; Wegman *et al*, 2007). In another study, Wegman *et al* (2005) even showed a better recurrence-free survival in PMs. The conflicting results may partly be explained by differences or heterogeneity in study populations and in view of our data also by lack of information about concomitant use of CYP2D6 inhibitors and hormone receptor status. Differences in dysfunctional alleles that have been studied also make it difficult to compare the results and can cause

misinterpretation (Dezentje *et al*, 2009). The gene encoding for CYP2D6 is highly polymorphic, with CYP2D6\*4 being the most common dysfunctional variant allele in Caucasians [5]. In our study, besides CYP2D6\*4, also the CYP2D6 dysfunctional alleles CYP2D6\*3, \*5, \*6, \*10 and \*41 having a low allele frequency, have been included in the analysis (Bradford, 2002).

Retrospective analyses clearly have shortcomings (that is, incomplete information on breast cancer stage, tumour size or nodal stage, or treatment given after progression on tamoxifen), but for this study there is no reason to assume that these variables differ significantly between the three phenotype groups nor have influenced outcome (Schroth *et al*, 2007). In addition, information about compliance may not have been complete as this was gathered retrospectively from patient charts. In a study by Rae *et al* (2009), an association between CYP2D6 genotype and compliance to tamoxifen therapy was shown, as PMs were more likely to continue tamoxifen therapy compared with intermediate or EMs. The results suggest that EMs are more likely to both obtain benefit from tamoxifen therapy and discontinue the drug because of side effects (Rae *et al*, 2009). This implies that the observed effects of tamoxifen in our study may even be underestimated by decreased adherence or persistence to therapy. Regarding the inclusion criteria there may have been selection bias, as not all patients may have been included. In that case we would expect to now have fewer PMs in the analysis compared with IMs or EMs, as they have a shorter OS and may have died before inclusion took place. This would also mean that our data may underestimate the effect described.

Our results are in line with the findings by Kelly *et al* (2010), who also found that tamoxifen may be less effective in patients treated with tamoxifen while taking CYP2D6 inhibitors, although the number of patients using this co-medication was relatively small in our study group. Nevertheless, it is striking to notice that relatively large differences in therapeutic outcome were found. For treatment of hot flushes as a side effect of tamoxifen therapy SSRIs are often prescribed (Goetz and Loprinzi, 2003). Clearly the potential negative effect of such SSRIs on the efficacy of the anti-cancer effect of tamoxifen is a matter of great concern. We could not ascertain the indication for anti-depressant treatment to rule out that the underlying disorder is responsible for the effect seen. But as the findings by Kelly *et al* (2010) show an increased mortality risk only with potent and not with weak or moderate inhibitors of CYP2D6 showing a strong biological plausibility, selection bias is not readily suggested. However, this will have to be confirmed in prospective studies.

Although further research is needed, this may imply that CYP2D6 EMs can preferentially be treated with tamoxifen instead of aromatase inhibitors. On the other hand, CYP2D6 PMs and patients who cannot avoid using CYP2D6-inhibiting medication might benefit more from aromatase inhibitors over tamoxifen, as these compounds have another metabolic route. Another option might be to give an escalated tamoxifen dose to increase plasma endoxifen concentrations. Tamoxifen doses higher than 40 mg daily may theoretically be necessary to achieve adequate plasma



**Figure 1** (A) Kaplan–Meier curves for time to progression and (B) overall survival, based on CYP2D6-predicted phenotype. EM, extensive metabolisers; IM, intermediate metabolisers; PM, poor metabolisers.

**Table 4** Association between CYP2D6-inhibiting co-medication, time to progression and overall survival

CYP2D6-inhibiting Co-medication <sup>a</sup>	Time to progression			Overall survival		
	Cases (n = 102)	HR <sup>b</sup> (95% CI)	P-value	Cases (n = 70)	HR <sup>b</sup> (95% CI)	P-value
No	95	1.00 (ref)		63	1.00 (ref)	
Yes	7	2.97 (1.33–6.67)	0.008	7	3.55 (1.59–7.96)	0.002

Abbreviations: CI = confidence interval; CYP2D6 = cytochrome P450 2D6; HR = hazards ratio; ref = reference. <sup>a</sup>Co-medication: paroxetine (n = 4), fluoxetine (n = 1), sertraline (n = 1) and citalopram (n = 1). <sup>b</sup>HRs were calculated using Cox-proportional hazards models and were adjusted for genotype (PM, IM and EM based on CYP2D6\*3, \*4, \*5, \*6, \*10 and \*41) and age at the index date.

concentrations of active tamoxifen metabolites in patients with a PM phenotype.

On the basis of our study and the current literature, we would favour to study not only CYP2D6 genotype but to focus more on CYP2D6 phenotype, thereby taking co-medication into account. One way to do this is by giving the patient a CYP2D6 activity probe drug that mimics the metabolism of tamoxifen (Mathijssen and van Schaik, 2006). Currently, such a phenotyping study is ongoing at our clinic (see <http://www.trialregister.nl>: NTR number 1751). In addition, it would be of interest to further explore the role of plasma concentrations of tamoxifen metabolites (that is, endoxifen) as predictors of therapeutic outcome (Kiyotani *et al*, 2010). Therapeutic drug monitoring should therefore be included in prospective studies that evaluate the effect of CYP2D6 phenotype on tamoxifen treatment outcome.

In summary, we showed that CYP2D6-predicted phenotype, described as the combined effect of CYP2D6 genotype and

co-prescribed CYP2D6-inhibiting medication, is a predictor of outcome in women using tamoxifen (40 mg per day) for the treatment of hormone receptor-positive MBC. As co-administration of CYP2D6-inhibiting medication seems to diminish the treatment effect of tamoxifen, this combination of drugs should be handled with care.

## ACKNOWLEDGEMENTS

We thank Dr M Bontenbal, Dr S Sleijfer and Prof Dr J Foekens for their specific and invaluable contributions to this study.

## Conflict of interest

The authors declared no conflict of interest.

## REFERENCES

- Aubert RE, Stanek EJ, Yao J, Teagarden JR, Subar M, Epstein RS, Skaar TC, Desta Z, Flockhart DA (2009) Risk of breast cancer recurrence in women initiating tamoxifen with CYP2D6 inhibitors. *J Clin Oncol* **27**: 18s, CRA508
- Bijl MJ, van Schaik RH, Lammers LA, Hofman A, Vulto AG, van Gelder T, Stricker BH, Visser LE (2009) The CYP2D6\*4 polymorphism affects breast cancer survival in tamoxifen users. *Breast Cancer Res Treat* **118**: 125–130
- Borges S, Desta Z, Li L, Skaar TC, Ward BA, Nguyen A, Jin Y, Storniolo AM, Nikoloff DM, Wu L, Hillman G, Hayes DF, Stearns V, Flockhart DA (2006) Quantitative effect of CYP2D6 genotype and inhibitors on tamoxifen metabolism: implication for optimization of breast cancer treatment. *Clin Pharmacol Ther* **80**: 61–74
- Bradford LD (2002) CYP2D6 allele frequency in European Caucasians, Asians, Africans and their descendants. *Pharmacogenomics* **3**: 229–243
- Dezentje VO, Guchelaar HJ, Nortier JW, van de Velde CJ, Gelderblom H (2009) Clinical implications of CYP2D6 genotyping in tamoxifen treatment for breast cancer. *Clin Cancer Res* **15**: 15–21
- Dezentje VO, van Blijderveen NJ, Gelderblom H, Putter H, van Herk-Sukel MP, Casparie MK, Egberts AC, Kavianer JW, Guchelaar HJ (2010) Effect of concomitant CYP2D6 inhibitor use and tamoxifen adherence on breast cancer recurrence in early-stage breast cancer. *J Clin Oncol* **28**: 2423–2429
- Fisher B, Costantino JP, Wickerham DL, Cecchini RS, Cronin WM, Robidoux A, Bevers TB, Kavanah MT, Atkins JN, Margolese RG, Runowicz CD, James JM, Ford LG, Wolmark N (2005) Tamoxifen for the prevention of breast cancer: current status of the National Surgical Adjuvant Breast and Bowel Project P-1 study. *J Natl Cancer Inst* **97**: 1652–1662
- Flockhart DA (2007) Cytochrome P450 drug interaction table, Vol 2009
- Goetz MP, Kamal A, Ames MM (2008) Tamoxifen pharmacogenomics: the role of CYP2D6 as a predictor of drug response. *Clin Pharmacol Ther* **83**: 160–166
- Goetz MP, Knox SK, Suman VJ, Rae JM, Safgren SL, Ames MM, Visscher DW, Reynolds C, Couch FJ, Lingle WL, Weinshilboum RM, Fritchler EG, Nibbe AM, Desta Z, Nguyen A, Flockhart DA, Perez EA, Ingle JN (2007) The impact of cytochrome P450 2D6 metabolism in women receiving adjuvant tamoxifen. *Breast Cancer Res Treat* **101**: 113–121
- Goetz MP, Loprinzi CL (2003) A hot flash on tamoxifen metabolism. *J Natl Cancer Inst* **95**: 1734–1735
- Goetz MP, Rae JM, Suman VJ, Safgren SL, Ames MM, Visscher DW, Reynolds C, Couch FJ, Lingle WL, Flockhart DA, Desta Z, Perez EA, Ingle JN (2005) Pharmacogenetics of tamoxifen biotransformation is associated with clinical outcomes of efficacy and hot flashes. *J Clin Oncol* **23**: 9312–9318
- Hayward JL, Carbone PP, Heuson JC, Kumaoka S, Segaloff A, Rubens RD (1977) Assessment of response to therapy in advanced breast cancer: a project of the Programme on Clinical Oncology of the International Union Against Cancer, Geneva, Switzerland. *Cancer* **39**: 1289–1294
- Hoskins JM, Carey LA, McLeod HL (2009) CYP2D6 and tamoxifen: DNA matters in breast cancer. *Nat Rev Cancer* **9**: 576–586
- Kamangar F, Dores GM, Anderson WF (2006) Patterns of cancer incidence, mortality, and prevalence across five continents: defining priorities to reduce cancer disparities in different geographic regions of the world. *J Clin Oncol* **24**: 2137–2150
- Kelly CM, Juurlink DN, Gomes T, Duong-Hua M, Pritchard KI, Austin PC, Paszat LF (2010) Selective serotonin reuptake inhibitors and breast cancer mortality in women receiving tamoxifen: a population based cohort study. *Bmj* **340**: c693
- Kiyotani K, Mushirola T, Imamura CK, Hosono N, Tsunoda T, Kubo M, Tanigawara Y, Flockhart DA, Desta Z, Skaar TC, Aki F, Hirata K, Takatsuka Y, Okazaki M, Ohsumi S, Yamakawa T, Sasa M, Nakamura Y, Zembutsu H (2010) Significant effect of polymorphisms in CYP2D6 and ABCB2 on clinical outcomes of adjuvant tamoxifen therapy for breast cancer patients. *J Clin Oncol* **28**: 1287–1293
- Lim HS, Ju Lee H, Seok Lee K, Sook Lee E, Jang IJ, Ro J (2007) Clinical implications of CYP2D6 genotypes predictive of tamoxifen pharmacokinetics in metastatic breast cancer. *J Clin Oncol* **25**: 3837–3845
- Loprinzi CL, Kugler JW, Sloan JA, Mailliard JA, LaVasseur BI, Barton DL, Novotny PJ, Dakhil SR, Rodger K, Rummans TA, Christensen BJ (2000) Venlafaxine in management of hot flashes in survivors of breast cancer: a randomised controlled trial. *Lancet* **356**: 2059–2063
- Mathijssen RH, van Schaik RH (2006) Genotyping and phenotyping cytochrome P450: perspectives for cancer treatment. *Eur J Cancer* **42**: 141–148
- Morello KC, Wurz GT, DeGregorio MW (2003) Pharmacokinetics of selective estrogen receptor modulators. *Clin Pharmacokinet* **42**: 361–372
- Mortimer JE, Flatt SW, Parker BA, Gold EB, Wasserman L, Natarajan L, Pierce JP (2007) Tamoxifen, hot flashes and recurrence in breast cancer. *Breast Cancer Res Treat* **108**: 421–426
- Muss HB, Case LD, Atkins JN, Bearden JD, Cooper MR, Cruz JM, Jackson DV, O'Rourke MA, Pavy MD, Powell BL (1994) Tamoxifen vs high-dose oral medroxyprogesterone acetate as initial endocrine therapy for patients with metastatic breast cancer: a Piedmont Oncology Association study. *J Clin Oncol* **12**: 1630–1638
- Newman WG, Hadfield KD, Latif A, Roberts SA, Shenton A, McHague C, Lalloo F, Howell S, Evans DG (2008) Impaired tamoxifen metabolism reduces survival in familial breast cancer patients. *Clin Cancer Res* **14**: 5913–5918
- Nowell SA, Ahn J, Rae JM, Scheys JO, Trovato A, Sweeney C, MacLeod SL, Kadlubar FF, Ambrosone CB (2005) Association of genetic variation in tamoxifen-metabolizing enzymes with overall survival and recurrence of disease in breast cancer patients. *Breast Cancer Res Treat* **91**: 249–258
- Rae JM, Sikora MJ, Henry NL, Li L, Kim S, Oesterreich S, Skaar TC, Nguyen AT, Desta Z, Storniolo AM, Flockhart DA, Hayes DF, Stearns V (2009) Cytochrome P450 2D6 activity predicts discontinuation of tamoxifen therapy in breast cancer patients. *Pharmacogenomics J* **9**: 258–264

- Riggs BL, Hartmann LC (2003) Selective estrogen-receptor modulators—mechanisms of action and application to clinical practice. *N Engl J Med* **348**: 618–629
- Schroth W, Antoniadou L, Fritz P, Schwab M, Muerdter T, Zanger UM, Simon W, Eichelbaum M, Brauch H (2007) Breast cancer treatment outcome with adjuvant tamoxifen relative to patient CYP2D6 and CYP2C19 genotypes. *J Clin Oncol* **25**: 5187–5193
- Schroth W, Goetz MP, Hamann U, Fasching PA, Schmidt M, Winter S, Fritz P, Simon W, Suman VJ, Ames MM, Safgren SL, Kuffel MJ, Ulmer HU, Bolander J, Strick R, Beckmann MW, Koelbl H, Weinshilboum RM, Ingle JN, Eichelbaum M, Schwab M, Brauch H (2009) Association between CYP2D6 polymorphisms and outcomes among women with early stage breast cancer treated with tamoxifen. *Jama* **302**: 1429–1436
- Wegman P, Elingarami S, Carstensen J, Stal O, Nordenskjold B, Wingren S (2007) Genetic variants of CYP3A5, CYP2D6, SULT1A1, UGT2B15 and tamoxifen response in postmenopausal patients with breast cancer. *Breast Cancer Res* **9**: R7
- Wegman P, Vainikka L, Stal O, Nordenskjold B, Skoog L, Rutqvist LE, Wingren S (2005) Genotype of metabolic enzymes and the benefit of tamoxifen in postmenopausal breast cancer patients. *Breast Cancer Res* **7**: R284–R290
- Wu X, Hawse JR, Subramaniam M, Goetz MP, Ingle JN, Spelsberg TC (2009) The tamoxifen metabolite, endoxifen, is a potent antiestrogen that targets estrogen receptor alpha for degradation in breast cancer cells. *Cancer Res* **69**: 1722–1727