

Prognostic impact of telomeric repeat-containing RNA expression on long-term oncologic outcomes in colorectal cancer

Sung Uk Bae, MD^a, Won-Jin Park, MS^b, Woon Kyung Jeong, MD^a, Seong Kyu Baek, MD^a, Hye-Won Lee, MD, PhD^c, Jae-Ho Lee, MD, PhD^{b,*}

Abstract

Telomeres are transcribed into long, noncoding telomeric repeat-containing RNAs (TERRA) that have been implicated in the regulation of telomerase, the enzyme that lengthens telomeres, in heterochromatin formation at telomeres, and in telomere stability. This study aimed to evaluate the correlation between TERRA expression and long-term oncologic outcomes in colorectal cancer (CRC).

We evaluated 18p TERRA expression and telomere length using quantitative real-time PCR in 60 patients who underwent surgical resection for CRC between June 2008 and November 2010.

Patients were grouped according to 18p TERRA expression, with 29 (48.3%) and 31 (51.7%) patients in the low and high TERRA expression groups, respectively. The median follow-up period was 80 months (range 2–103). The 18p TERRA expression was marginally significantly associated with preoperative carcinoembryonic antigen (CEA; $P = .082$) and was significantly associated with telomere length ($P < .05$). Multivariate analysis revealed that preoperative CEA (hazard ratio [HR], 2.728; 95% confidence interval [CI], 0.832–8.944, $P = .098$) and 18p TERRA expression (HR, 0.113; 95% CI, 0.011–1.126, $P = .071$) were marginally significant independent prognostic factors for overall survival (OS), whereas preoperative CEA (HR, 4.254; 95% CI, 1.394–12.985, $P = .011$) and 18p TERRA expression (HR, 0.108; 95% CI, 0.011–1.037, $P = .054$) were significant independent prognostic factors for disease-free survival (DFS). According to our prognostic model with 2 prognostic factors, the OS and DFS rate increased to 76.2% and 80.63%, respectively, in patients with high 18p TERRA expression and CEA levels ≤ 5 ($P = .178$, $P = .057$, respectively).

18p TERRA expression was marginally significantly associated with preoperative CEA and significantly associated with telomere length, rendering it a potential prognostic factor for long-term oncologic outcomes in CRC.

Abbreviations: CEA = carcinoembryonic antigen, CI = confidence interval, CRC = colorectal cancer, CT = computed tomography, DFS = disease-free survival, HR = hazard ratio, nDNA = nuclear DNA, OS = overall survival, TERRA = telomeric repeat-containing RNAs.

Keywords: colonic neoplasms, long noncoding, prognosis, RNA, telomere, telomere homeostasis

1. Introduction

Colorectal cancer (CRC) is one of the most common types of cancer in Korea and other developed countries.^[1,2] The

carcinogenesis of CRC is driven by genetic and epigenetic changes in tumor cells and is also influenced by tumor–host interactions.^[3–5] Previous studies have reported the potential association of molecular markers such as *BRAF*, *KRAS*, and mismatch repair with prognosis in patients with CRC.^[6,7] Identification of predictors of poor prognosis and disease recurrence is important for the successful treatment of these patients and for drug discovery.

Telomeres are the ends of linear chromosomes that serve as a protective cap to avoid permanent proliferation arrest and are essential for maintaining genome stability, preventing chromosome ends from being recognized as double-strand breaks, and assuring proper replication of chromosomes.^[8] Telomeres are transcribed into long, noncoding telomeric repeat-containing RNAs (TERRA), which have been implicated in the regulation of telomerase, the enzyme that lengthens telomeres, in the formation of heterochromatin at telomeres, and in telomere stability.^[9]

Previous studies on TERRA expression have demonstrated its downregulation in advanced stages of human tumors of the larynx, colon, and lymph node compared with normal tissues, suggesting that telomeric transcription is downregulated in advanced tumors. However, the prognostic role of TERRA expression in CRC is unclear. This study aimed to evaluate the correlation between TERRA expression and long-term oncologic outcomes in CRC.

Editor: Hua Yang.

SUB and WJP contributed equally to this work.

This study was supported by grants from the Basic Science Research Program through the National Research Foundation of Korea (NRF), funded by the Ministry of Education (NRF-2014R1A6A3A04058057), and by the Korean Government (MSIP) (No. 2014R1A5A2010008).

The authors have no conflicts of interest to disclose.

^a Department of Surgery, ^b Department of Anatomy, ^c Department of Pathology, Keimyung University School of Medicine, Dongsan Medical Center, Daegu, Republic of Korea.

* Correspondence: Jae-Ho Lee, Department of Anatomy, School of Medicine, Keimyung University, 2800, Dalgubeoldae-ro, Dalseo-Gu, Daegu, Republic of Korea (e-mail: anato82@dsmc.or.kr).

Copyright © 2019 the Author(s). Published by Wolters Kluwer Health, Inc. This is an open access article distributed under the terms of the Creative Commons Attribution-Non Commercial-No Derivatives License 4.0 (CCBY-NC-ND), where it is permissible to download and share the work provided it is properly cited. The work cannot be changed in any way or used commercially without permission from the journal.

Medicine (2019) 98:14(e14932)

Received: 23 June 2018 / Received in final form: 24 January 2019 / Accepted: 28 February 2019

<http://dx.doi.org/10.1097/MD.00000000000014932>

2. Methods

2.1. Patients

From our prospectively collected database, we evaluated the expression of 2p and 18p TERRA along with telomere length using quantitative real-time PCR in 60 patients who underwent surgical resection for CRC between June 2008 and November 2010. Tumor specimens and corresponding nonmalignant colorectal tissue were immediately frozen in liquid nitrogen and stored at -80°C until DNA and RNA isolation. Tissue samples were provided from Keimyung Human Bio-resource Bank, Korea. All patients were explained the study purpose, and informed consent was obtained from each study participant. The protocols were approved by the Institutional Review Board of Keimyung University Dongsan Medical Center (approval #12–41). Clinicopathologic data including age, preoperative carcinoembryonic antigen (CEA), pathologic tumor and nodal stage, tumor differentiation, lymphovascular invasion, perineural invasion, and survival data were obtained. An experienced pathologist reviewed all cases and its clinicopathological characteristics were presented (Fig. 1).

2.2. Preoperative staging and follow-up

Preoperative staging evaluation was performed using chest X-ray and abdominal and chest computed tomography (CT) scan. Postoperative chemotherapy (5-FU/leucovorin regimen or FOL-FOX) was administered at 3 to 4 weeks after surgery for 6 months. All patients underwent postoperative clinical examinations, measurement of serum CEA levels, chest X-rays every 3 months, and a chest/abdominal CT every 6 months over a period of 3 years. After 3 years, the follow-up interval was changed to 6 months.

2.3. DNA isolation and telomere length analysis

Genomic DNA was isolated from samples using the QIAamp DNA mini kit (Qiagen, Inc., Valencia, CA). Telomere length was analyzed using quantitative PCR (qPCR). For the quantitative determination of telomere length relative to nuclear DNA (nDNA), specific primers for telomere (T) and nDNA-encoded β -globin (S) were selected, according to a previous study.^[10] qPCR was carried out using the specific primers and SYBR GREEN Premix (Toyobo, Japan) on a LightCycler 480 II system

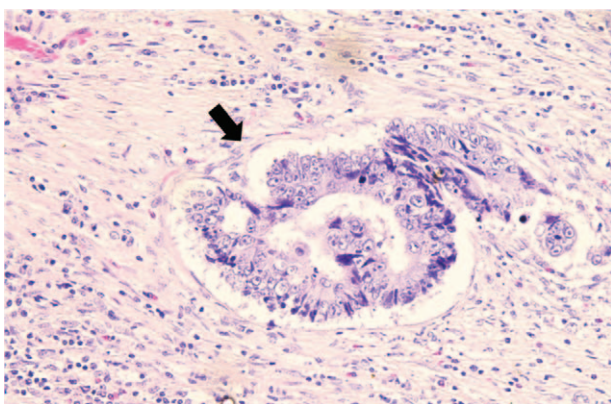


Figure 1. Representative histological finding of lymphovascular invasion (arrow) in colorectal cancers (Hematoxylin-Eosin stain, $\times 400$). Tumor embolus was observed within an endothelial cell-lined space.

(Roche Diagnostics, Basel, Switzerland). The relative telomere length was determined by calculating T/S values using the following formula: $T/S = 2^{-\Delta\text{Cq}}$, where $\Delta\text{Cq} = \text{mean Cq}_T - \text{mean Cq}_S$. β -globin was used as a housekeeping gene for normalization, and a nontemplate sample was used as a negative control. Each measurement was repeated in triplicate and 5 serially diluted control samples were included in each experiment.

2.4. RNA isolation and TERRA expression analysis

Total cellular RNA was extracted from tissues using the TRIzol reagent (Molecular Research Center Inc., Cincinnati, OH). RNA was quantified using Nanodrop 1000 (Thermo Scientific, Wilmington, Denmark). Each cDNA sample was synthesized from $2\mu\text{g}$ of total RNA using M-MLV reverse transcriptase (Promega, Madison, WI) according to the manufacturer's protocol. Transcript levels of 2p and 18p TERRA were measured by qPCR as described previously.^[11] The primers used for 2p TERRA are as follows: F: 5'-TAAGCCGAAGCCTAACTC-GTGTC-3' and R: 5'-GTAAAGGCGAAGCAGCATTCTCC-3'; and those for 18p-TERRA are as follows: F: 5'-CCTAACCT-CACCCTTCTAAC-3' and R: 5'-TACCTCGCTTTGGGA-CAAC-3'. Relative quantities were determined in relation to the levels of 36B4 (reference single copy gene) and further analysis was performed as described above. Previous study about telomere status routinely uses 36B4, which encodes the acidic ribosomal phosphoprotein P0.

2.5. Evaluation parameters and statistical analyses

The classification system of the American Joint Committee on Cancer 7th edition was used to determine the pathological tumor depth, the number of metastasized lymph nodes, and cancer stage. Recurrence was defined as the presence of a histologically and/or radiologically confirmed tumor. Overall survival (OS) time was calculated from the date of surgery to the date of the latest follow-up visit or the date of death due to any cause, and disease-free survival (DFS) time was defined as the time from surgery to any type of recurrence. Patients who died from other causes or were alive without progression or recurrence at the most recent follow-up were treated as censored in the analysis of DFS time. The 5-year survival rate was determined by the Kaplan–Meier method, and the log-rank test was used to compare survival rates among subgroups. The log-rank test was used for univariate analysis and all variables were found to be associated with survival. Independent prognostic factors were identified by multivariate analysis using the Cox proportional hazards model to calculate hazard ratios (HRs). The results of the Cox model analysis are reported using HR and 95% confidence intervals (CI). All statistical tests were performed using the Statistical Package for Social Sciences software (version 21.0, SPSS, Chicago, IL). Chi-squared test, the Mann–Whitney *U* test, and simple correlation analysis were used to analyze the associations between the variables. Data are expressed as means with standard deviation. *P* values $< .05$ were defined to indicate a statistically significant difference.

3. Results

3.1. Patient and tumor characteristics

Both 2p and 18p TERRA expression were successfully analyzed in all 60 cases of CRC. Both 2p and 18p TERRA expression in the CRC and paired noncancerous tissues were similar ($P = .34$). The

Table 1
Characteristics of patients with colorectal cancer according to 18p TERRA expression.

	Low 18p TERRA level (N=29)	High 18p TERRA level (N=31)	P value
Age (years), median (range)	66 (34–75)	66 (38–83)	.833
Preoperative CEA (ng/mL), median (range)	3.5 (0.9–32.9)	2.37 (0.96–24.68)	.082
Tumor stage, n (%)			.369
T1	1 (3.4)	2 (6.5)	
T2	5 (17.2)	3 (9.7)	
T3	20 (69.0)	18 (58.1)	
T4	3 (10.3)	8 (25.8)	
Nodal stage, n (%)			.973
N0	16 (55.2)	17 (54.8)	
N1	8 (27.6)	8 (25.8)	
N2	5 (17.2)	6 (19.4)	
Histology, n (%)			.525
Well-differentiated	1 (3.4)	2 (6.5)	
Moderately differentiated	27 (93.1)	26 (83.9)	
Poorly differentiated	1 (3.4)	3 (9.7)	
Lymphovascular invasion, n (%)	16 (55.2)	18 (58.1)	.821
Perineural invasion, n (%)	10 (34.5)	11 (35.5)	.935
2p TERRA, n (%)	4 (13.8)	29 (93.5)	<.05
Long telomere length, n (%)	6 (21.4)	26 (89.7)	<.05

CEA = carcinoembryonic antigen.

average 2p and 18p TERRA expression in the CRC tissue was 1.33 ± 0.90 and 1.77 ± 0.92 , respectively, which contrasted with its expression in normal tissues. To further explore the correlation between TERRA expression and the clinicopathological parameters of CRC, patients were categorized into 2 subgroups according to the average values of the tumor/nontumor ratio. Expression of 18p TERRA showed more significance in clinicopathological characteristics of CRC than 2p TERRA. Therefore, we focused on 18p TERRA expression in CRCs. 18p TERRA expression was categorized as low in 29 (48.3%) patients and high in 31 (51.7%) patients. The patient and tumor characteristics of the study cohort stratified by 18p TERRA status are shown in Table 1. The demographic characteristics between the 2 groups were similar for age, preoperative CEA levels, tumor stage, nodal stage, histology, lymphovascular invasion, and perinodal extension, but high 18p

TERRA expression was significantly associated with high expression of 2p TERRA ($P < .05$) and long telomere length ($P < .05$), and was marginally significantly associated with low preoperative CEA levels ($P = .082$). A quantitative correlation analysis also showed that CEA level was negatively associated with 2p TERRA expression ($r = -0.326$, $P = .011$) and 18p TERRA expression ($r = -0.277$, $P = .032$) (Fig. 2).

3.2. Oncologic outcomes according to TERRA and telomere length

The median follow-up period was 80 months (range 2–103). The OS and DFS rates were not significantly different between the high and low 18p TERRA expression groups (OS: 73.8% vs. 56.3%, $P = .180$; DFS: 73.8% vs. 56.3%, $P = .214$) (Fig. 3A and B). The OS and DFS rates were not significantly different between

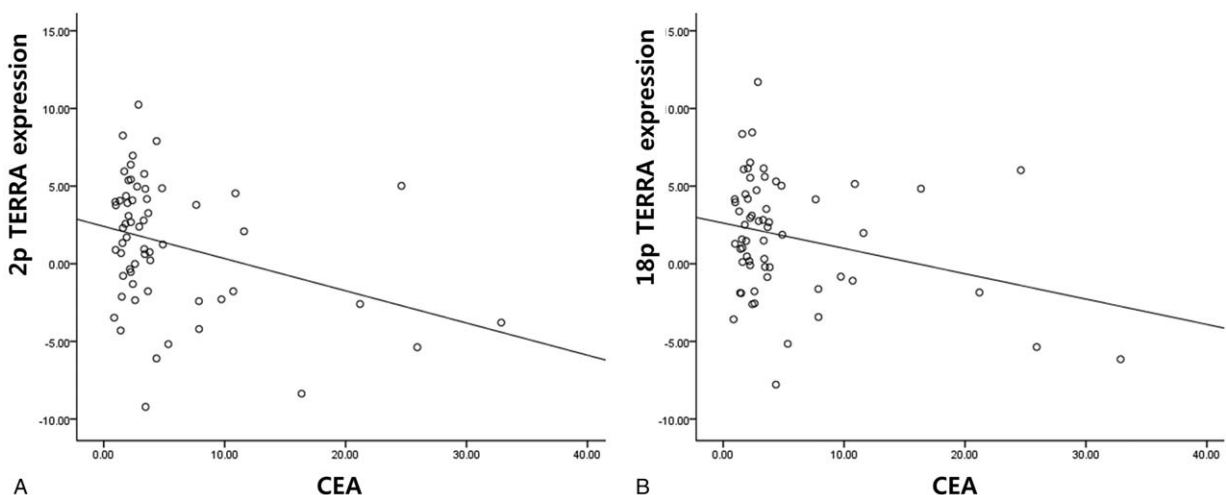


Figure 2. Correlation between TERRA expression and CEA level in colorectal cancers (A) 2p TERRA and CEA level (B) 18p TERRA and CEA level. CEA = preoperative carcinoembryonic antigen, TERRA = telomeric repeat-containing RNAs.

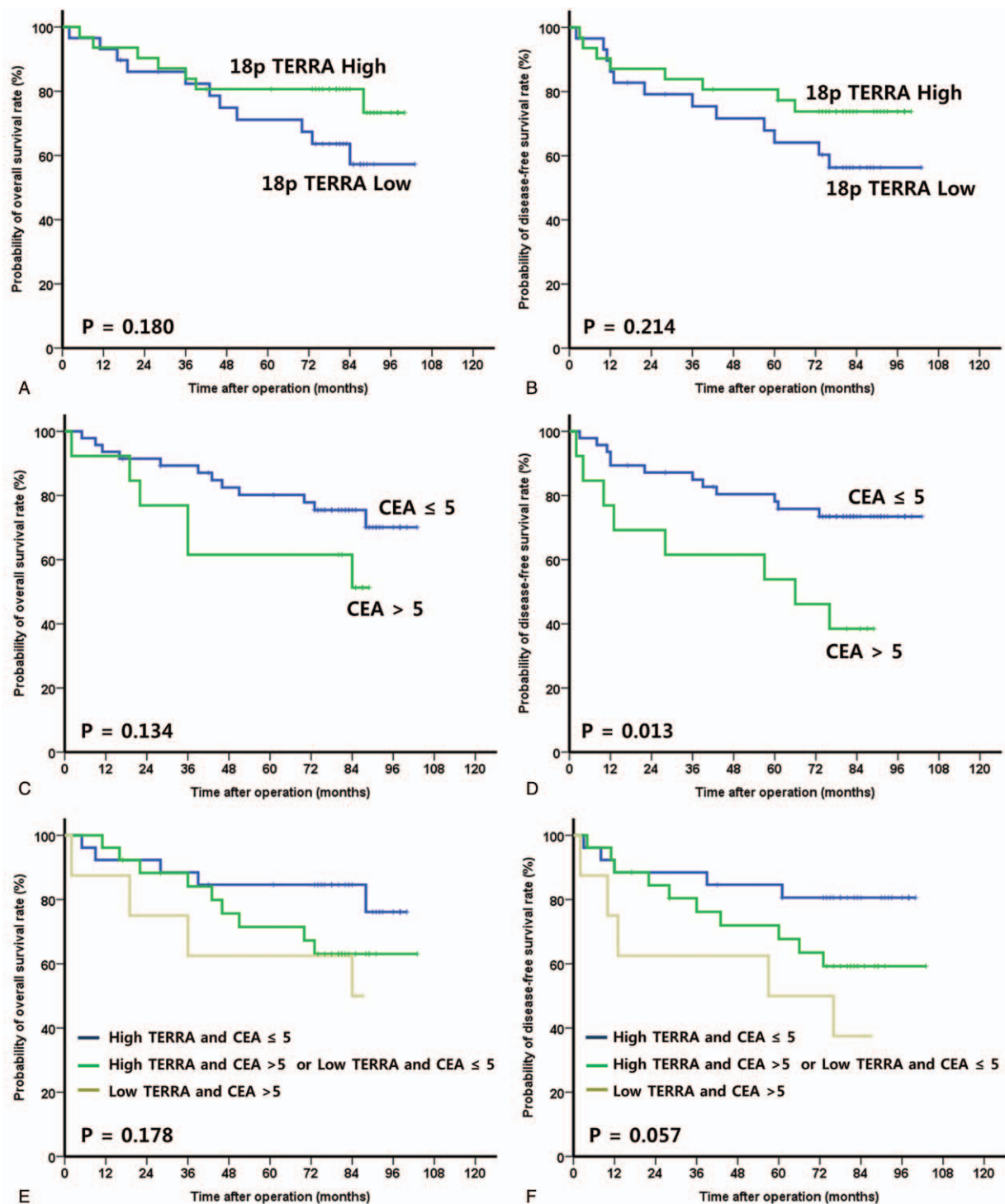


Figure 3. Survival analysis in colorectal cancers. (A) Overall survival according to 18p TERRA expression. (B) Disease-free survival according to 18p TERRA expression. (C) Overall survival according to CEA. (D) Disease-free survival according to CEA. (E) Overall survival according to 18p TERRA expression and CEA. (F) Disease-free survival according to 18p TERRA expression and CEA. CEA=preoperative carcinoembryonic antigen, TERRA=telomeric repeat-containing RNAs.

the high and low 2p TERRA expression groups (OS: 71.1% vs. 59.2%, $P=.322$; DFS: 71.7% vs. 58.3%, $P=.317$). The OS and DFS rates were not significantly different between the long and short telomere length groups (OS: 66.4% vs. 63.0%, $P=.305$; DFS: 69.1% vs. 59.1%, $P=.313$) (Table 2). CEA level showed a prognostic value for not OS (70.1% vs. 51.3%, $P=.134$) but DFS (73.4% vs. 38.5%, $P=.013$) (Fig. 3C and D).

3.3. Univariate and multivariate survival analyses of prognostic factors

Univariate analyses revealed that perineural invasion was significantly associated with OS and preoperative CEA was significantly associated with DFS (Table 2). Multivariate analysis showed that preoperative CEA (HR, 2.728; 95% CI, 0.832–8.944, $P=.098$) and 18p TERRA expression (HR, 0.113;

Table 2**Prognostic factors of survival in univariate analysis.**

Prognostic factor	No. (n=60)	OS (%)	P value	DFS (%)	P value
Age (years)			.411		.299
≤60	17	66.9		74.5	
>60	43	66.6		61.9	
Tumor stage			.086		.065
T1 and T2	11	90.9		90.9	
T3 and T4	49	57.5		59.4	
CEA			.134		.013
≤5	47	70.1		73.4	
>5	13	51.3		38.5	
Nodal stage			.063		.076
N0	33	73.9		75.2	
N1 and N2	27	53.6		52.2	
Histology			.157		.281
Well and moderately differentiated	56	66.0		74.4	
Poorly differentiated and mucinous	4	50.0		50.0	
Lymphovascular invasion			.128		.054
No	26	80.4		80.6	
Yes	34	52.1		53.1	
18p TERRA expression			.18		.214
Low	29	56.3		56.3	
High	31	73.3		73.8	
2p TERRA expression			.322		.317
Low	27	59.2		58.3	
High	33	71.1		71.7	
Perineural invasion			.022		.064
No	39	73.5		72.6	
Yes	21	49.0		51.9	
Telomere length			.305		.313
Short	25	63.0		59.1	
Long	32	66.4		69.1	

CEA = preoperative carcinoembryonic antigen, DFS = disease-free survival, OS = overall survival, TERRA = telomeric repeat-containing RNAs.

95% CI, 0.011–1.126, $P=.071$) were tentatively significant independent prognostic factors for OS and preoperative CEA (HR, 4.254; 95% CI, 1.394–12.985, $P=.011$) and that

18p TERRA expression (HR, 0.108; 95% CI, 0.011–1.037, $P=.054$) was a significant independent prognostic factor for DFS (Table 3).

Table 3**Prognostic factors of survival in multivariate analysis.**

Prognostic factor	Overall survival		Disease-free survival	
	HR (95% CI)	P value*	HR (95% CI)	P value*
Age				
>60 vs. ≤60	2.193 (0.471–10.214)	.317	2.933 (0.629–13.671)	.171
Tumor stage				
T3 and T4 vs. T1 and T2	3.370 (0.359–31.663)	.288	4.128 (0.477–35.753)	.198
Histology				
Poorly differentiated and mucinous vs. well and moderately differentiated	4.835 (0.409–57.184)	.211	4.157 (0.375–46.041)	.246
Lymphovascular invasion				
Yes vs. no	1.014 (0.231–4.452)	.985	1.903 (0.483–7.496)	.358
Perineural invasion				
Positive vs. ≤ negative	2.908 (0.812–10.409)	.101	2.573 (0.795–8.326)	.115
Nodal stage				
Positive vs. ≤ negative	1.288 (0.316–5.255)	.724	0.770 (0.212–2.789)	.690
CEA				
>5 vs. ≤5	2.728 (0.832–8.944)	.098	4.254 (1.394–12.985)	.011
18p TERRA expression				
High vs. low	0.113 (0.011–1.206)	.071	0.108 (0.011–1.037)	.054
Telomere length				
Long vs. short	0.730 (0.153–3.480)	.693	0.826 (0.178–3.840)	.808

CEA = preoperative carcinoembryonic antigen, CI = confidence interval, HR = hazard ratio.

3.4. Survival analyses according to the prognostic model

According to our prognostic model with 2 prognostic factors, the OS and DFS rate increased to 76.2% and 80.6%, respectively, in patients with high 18p TERRA expression and a CEA level ≤ 5 ($P = .178$, $P = .057$, respectively) (Fig. 3E and F). The 5-year OS and DFS rates of patients with low 18p TERRA expression and CEA level ≤ 5 or high 18p TERRA expression and CEA level > 5 were 63.1% and 59.3%, respectively. The 5-year OS and DFS rates of patients with low 18p TERRA expression and CEA levels > 5 were 50.0% and 37.5%, respectively.

4. Discussion

The current study highlights a correlation between TERRA expression and long-term oncologic outcomes in CRC suggesting that TERRA levels may be proposed as a novel and potential molecular prognostic marker for CRC. We found that high tumor TERRA expression was independently associated with preoperative CEA and telomere length in human colorectal carcinoma tissue, and these molecular features have been associated with long-term oncologic outcomes in CRC after controlling for potential confounders, including pathologic outcomes.

Previous studies support the hypothesis that TERRA plays an essential role in telomere maintenance and that deregulation of TERRA synthesis causes genomic instability and telomeric defects.^[12–16] A study using astrocytoma cell lines and human samples demonstrated that 2p TERRA was downregulated in anaplastic astrocytoma, whereas 18p TERRA showed no correlation with tumor grade. Pfeiffer et al^[17] suggested that TERRA expression was significantly downregulated in advanced stages of different types of human cancer including colon cancer compared to normal tissues, suggesting that downregulation of these RNAs is associated with undifferentiated cell stages. In our study, 18p TERRA expression seemed to be a tentatively significant independent prognostic factor for long-term oncologic outcomes, even though 18p and 2p TERRA showed no correlation with tumor grade.

Telomere length decreases with age, and some studies have demonstrated that TERRA is a critical regulatory factor that controls telomeric length.^[17–19] Pfeiffer et al^[17] demonstrated that TERRA can promote telomere shortening by inhibiting telomerase activity, promoting Exo1-dependent resection, and that TERRA plays a negative role in telomere length maintenance by interacting with the Exo1-inhibiting Ku70/80 complex. Sampl et al^[11] report that TERRA levels are downregulated following tumor grades and that TERRA expression is related to telomerase activity and telomere length in human astrocytoma cell lines. In our study, high 18p TERRA expression was associated with long telomere length ($P < .05$). Our present data are also consistent with previous reports and further studies of the mechanisms by which TERRA regulates telomere length may provide new molecular targets for the diagnosis and therapy of telomere associated diseases.^[20]

Preoperative serum levels of the tumor marker CEA, which represents serum tumor burden, are of prognostic significance. CEA levels ≥ 5.0 ng/mL have an adverse effect on survival independent of tumor stage. In the current study, 18p TERRA expression was marginally significantly associated with preoperative CEA ($P = .082$) and elevated preoperative CEA level, and low 18p TERRA expression was identified to be an independent risk predictor for DFS. Additionally, our prognostic model with 2 prognostic factors including preoperative CEA and 18p TERRA expression showed that TERRA expression could be used as a

possible prognostic marker in CRC patients. Therefore, further studies with a larger number of patients and additional data should be performed to clarify the precise mechanism of TERRA expression in CRC.

There are several limitations to this study, including a single institutional analysis, a small sample size, the lack of investigation of other molecular biomarkers such as telomerase activity status, *KRAS* and *BRAF* mutations, and a retrospective analysis. A possible association between telomere regulation and CRC was suggested, however, telomere may be affected by lifestyle, and various factors, such as lifestyle, obesity, food intake, alcohol, and smoking. Therefore, a study with subdivided patients group should be designed carefully. Further studies with a large population are thus needed to determine the biomarkers for predicting the long-term prognosis and its molecular mechanism. In conclusion, 18p TERRA expression was marginally significantly associated with preoperative CEA and significantly associated with telomere length, rendering it a potential prognostic factor for long-term oncologic outcomes in CRC.

Author contributions

Conceptualization: Sung Uk Bae, Jae-Ho Lee.

Data curation: Won-Jin Park, Woon Kyung Jeong, Seong Kyu Baek, Hye-Won Lee.

Funding acquisition: Jae-Ho Lee.

Investigation: Won-Jin Park.

Methodology: Sung Uk Bae, Won-Jin Park, Seong Kyu Baek, Hye-Won Lee.

Project administration: Sung Uk Bae.

Resources: Sung Uk Bae, Woon Kyung Jeong, Seong Kyu Baek.

Software: Won-Jin Park.

Supervision: Jae-Ho Lee.

Validation: Won-Jin Park, Woon Kyung Jeong.

Visualization: Seong Kyu Baek.

Writing – original draft: Sung Uk Bae, Seong Kyu Baek.

Writing – review & editing: Woon Kyung Jeong, Jae-Ho Lee. Jae-Ho Lee orcid: 0000-0002-5562-0720.

References

- [1] Shin A, Kim KZ, Jung KW, et al. Increasing trend of colorectal cancer incidence in Korea, 1999–2009. *Cancer Res Treat* 2012;44:219–26.
- [2] Arnold M, Sierra MS, Laversanne M, et al. Global patterns and trends in colorectal cancer incidence and mortality. *Gut* 2017;66:683–91.
- [3] Colussi D, Brandi G, Bazzoli F, et al. Molecular pathways involved in colorectal cancer: implications for disease behavior and prevention. *Int J Mol Sci* 2013;14:16365–85.
- [4] Di Caro G, Marchesi F, Laghi L, et al. Immune cells: plastic players along colorectal cancer progression. *J Cell Mol Med* 2013;17:1088–95.
- [5] Ogino S, Galon J, Fuchs CS, et al. Cancer immunology: analysis of host and tumor factors for personalized medicine. *Nat Rev Clin Oncol* 2011;8:711–9.
- [6] Zaanani A, Flejou JF, Emile JF, et al. Defective mismatch repair status as a prognostic biomarker of disease-free survival in stage III colon cancer patients treated with adjuvant FOLFOX chemotherapy. *Clin Cancer Res* 2011;17:7470–8.
- [7] Sinicrope FA, Shi Q, Smyrk TC, et al. Molecular markers identify subtypes of stage III colon cancer associated with patient outcomes. *Gastroenterology* 2015;148:88–99.
- [8] Samassekou O, Gadjji M, Drouin R, et al. Sizing the ends: normal length of human telomeres. *Ann Anat* 2010;192:284–91.
- [9] Palm W, de Lange T. How shelterin protects mammalian telomeres. *Annu Rev Genet* 2008;42:301–34.
- [10] Park WJ, Bae SU, Heo YR, et al. Telomere shortening in non-tumorous and tumor mucosa is independently related to colorectal carcinogenesis in precancerous lesions. *Int J Mol Epidemiol Genet* 2017;8:53–8.
- [11] Sampl S, Pramhas S, Stern C, et al. Expression of telomeres in astrocytoma WHO grade 2 to 4: TERRA level correlates with telomere

- length, telomerase activity, and advanced clinical grade. *Transl Oncol* 2012;5:56–65.
- [12] Azzalin CM, Reichenbach P, Khoriauli L, et al. Telomeric repeat containing RNA and RNA surveillance factors at mammalian chromosome ends. *Science* 2007;318:798–801.
- [13] Deng Z, Norseen J, Wiedmer A, et al. TERRA RNA binding to TRF2 facilitates heterochromatin formation and ORC recruitment at telomeres. *Mol Cell* 2009;35:403–13.
- [14] Yu TY, Kao YW, Lin JJ. Telomeric transcripts stimulate telomere recombination to suppress senescence in cells lacking telomerase. *Proc Natl Acad Sci U S A* 2014;111:3377–82.
- [15] Azzalin CM, Lingner J. Telomere functions grounding on TERRA firma. *Trends Cell Biol* 2015;25:29–36.
- [16] Rippe K, Luke B. TERRA and the state of the telomere. *Nat Struct Mol Biol* 2015;22:853–8.
- [17] Pfeiffer V, Lingner J. TERRA promotes telomere shortening through exonuclease 1-mediated resection of chromosome ends. *PLoS Genet* 2012;8:e1002747.
- [18] Luke B, Panza A, Redon S, et al. The Rat1p 5' to 3' exonuclease degrades telomeric repeat-containing RNA and promotes telomere elongation in *Saccharomyces cerevisiae*. *Mol Cell* 2008;32:465–77.
- [19] Maicher A, Kastner L, Dees M, et al. Deregulated telomere transcription causes replication-dependent telomere shortening and promotes cellular senescence. *Nucleic Acids Res* 2012;40:6649–59.
- [20] Wang C, Zhao L, Lu S. Role of TERRA in the regulation of telomere length. *Int J Biol Sci* 2015;11:316–23.