

# CBL Is Frequently Altered in Lung Cancers: Its Relationship to Mutations in MET and EGFR Tyrosine Kinases

Yi-Hung Carol Tan<sup>1</sup>, Soundararajan Krishnaswamy<sup>2</sup>, Suvobroto Nandi<sup>2</sup>, Rajani Kanteti<sup>2</sup>, Sapana Vora<sup>3</sup>, Kenan Onel<sup>3</sup>, Rifat Hasina<sup>2</sup>, Fang-Yi Lo<sup>1</sup>, Essam El-Hashani<sup>2</sup>, Gustavo Cervantes<sup>2</sup>, Matthew Robinson<sup>2</sup>, Stephen C. Kales<sup>4</sup>, Stanley Lipkowitz<sup>4</sup>, Theodore Karrison<sup>5</sup>, Martin Sattler<sup>6</sup>, Everett E. Vokes<sup>2</sup>, Yi-Ching Wang<sup>7</sup>, Ravi Salgia<sup>2\*</sup>

**1** Department of Life Science, National Taiwan Normal University, Taipei, Taiwan, **2** Department of Medicine, The University of Chicago Cancer Research Center, The University of Chicago Medical Center, Pritzker School of Medicine, Chicago, Illinois, United States of America, **3** Department of Pediatrics, The University of Chicago Cancer Research Center, The University of Chicago Medical Center, Pritzker School of Medicine, Chicago, Illinois, United States of America, **4** Laboratory of Cellular and Molecular Biology, Center for Cancer Research, National Cancer Institute, National Institutes of Health, Bethesda, Maryland, United States of America, **5** Department of Statistics, The University of Chicago, Chicago, Illinois, United States of America, **6** Department of Medical Oncology, Dana-Farber Cancer Institute and Harvard Medical School, Boston, Massachusetts, United States of America, **7** Department of Pharmacology, College of Medicine, National Cheng Kung University, Tainan, Taiwan

## Abstract

**Background:** Non-small cell lung cancer (NSCLC) is a heterogeneous group of disorders with a number of genetic and proteomic alterations. c-CBL is an E3 ubiquitin ligase and adaptor molecule important in normal homeostasis and cancer. We determined the genetic variations of c-CBL, relationship to receptor tyrosine kinases (EGFR and MET), and functionality in NSCLC.

**Methods and Findings:** Using archival formalin-fixed paraffin embedded (FFPE) extracted genomic DNA, we show that c-CBL mutations occur in somatic fashion for lung cancers. c-CBL mutations were not mutually exclusive of MET or EGFR mutations; however they were independent of p53 and KRAS mutations. In normal/tumor pairwise analysis, there was significant loss of heterozygosity (LOH) for the c-CBL locus (22%, n = 8/37) and none of these samples revealed any mutation in the remaining copy of c-CBL. The c-CBL LOH also positively correlated with EGFR and MET mutations observed in the same samples. Using select c-CBL somatic mutations such as S80N/H94Y, Q249E and W802\* (obtained from Caucasian, Taiwanese and African-American samples, respectively) transfected in NSCLC cell lines, there was increased cell viability and cell motility.

**Conclusions:** Taking the overall mutation rate of c-CBL to be a combination as somatic missense mutation and LOH, it is clear that c-CBL is highly mutated in lung cancers and may play an essential role in lung tumorigenesis and metastasis.

**Citation:** Tan Y-HC, Krishnaswamy S, Nandi S, Kanteti R, Vora S, et al. (2010) CBL Is Frequently Altered in Lung Cancers: Its Relationship to Mutations in MET and EGFR Tyrosine Kinases. PLoS ONE 5(1): e8972. doi:10.1371/journal.pone.0008972

**Editor:** Joseph Najbauer, City of Hope National Medical Center, United States of America

**Received:** October 28, 2009; **Accepted:** January 9, 2010; **Published:** January 29, 2010

This is an open-access article distributed under the terms of the Creative Commons Public Domain declaration which stipulates that, once placed in the public domain, this work may be freely reproduced, distributed, transmitted, modified, built upon, or otherwise used by anyone for any lawful purpose.

**Funding:** Supported by National Institutes of Health (NIH)/National Cancer Institute (NCI) Grants: 5R01CA125541-03, 3R01CA125541-03S109, 5R01CA129501-02, 3R01CA129501-02S109, 1R21CA140003-01, MARF, V-Foundation, Cancer Research Foundation and American Respiratory Health Association of America (RS) and grant NSC96-2628-B-006-048-MY3 from the National Science Council, Taiwan. This research was supported by the Intramural Research Program of the NIH, National Cancer Institute, Center for Cancer Research. The funding agencies had no role in study design, data collection and analysis, decision to publish, or preparation of the manuscript.

**Competing Interests:** The authors have declared that no competing interests exist.

\* E-mail: rsalgia@medicine.bsd.uchicago.edu

## Introduction

In the US alone, each year approximately 219,400 people are diagnosed with lung cancers, out of which more than 145,000 of them succumb to the disease [1]. This number is roughly equivalent to the combined mortality rates of cancers of the breast, prostate, colon, liver, kidney and melanoma [1]. In addition the prognosis is usually poor and the five-year survival rate is less than 15%. There are also significant ethnic differences for lung cancer, and the outcome is worse for blacks compared to whites. Gender differences are also striking with women having significantly better prognosis as compared to men. There are a number of genetic alterations that

can occur in lung cancer. As an example, in NSCLC, mutations in KRAS, p53, EGFR and MET have been identified. Many of these pathways, especially Receptor Tyrosine Kinases (RTKs) are controlled by c-CBL.

CBL (Casitas B-lineage lymphoma) is a mammalian gene located on human chromosome 11q23.3 [2] and is involved in cell signaling and protein ubiquitination [3]. CBL proteins belong to the RING finger class of ubiquitin ligases (E3) and there are three homologues c-CBL, CBL-b, CBL-3 [4]. The c-CBL and CBL-b genes are ubiquitously expressed with the highest levels in hematopoietic tissues [5]. c-CBL consists of four regions encoding for functionally distinct protein domains: the N-terminal tyrosine

kinase binding (TKB) domain, the linker region, the catalytic RING finger domain, the proline-rich region and the c-terminal ubiquitin-associated (UBA) domain that also overlaps with a leucine-zipper (LZ) domain [3]. Both TKB and RING finger domains are essential for ligand-induced ubiquitination of RTKs [6,7,8,9]. The RING finger domain is required for the recruitment of E2 ubiquitin-conjugating enzymes. The TKB domain includes four-helix bundle (4H), a calcium-binding EF hand, and a modified SH2 domain, which binds to phosphotyrosine residues [3,10,11,12]. In addition, the proline-rich region of c-CBL can associate with the SH3 domain of Grb2, which can indirectly recruit c-CBL to RTKs via the GRB2 adaptor protein [7,13,14].

c-CBL also binds to EGFR and acts as the E3 that targets EGFR for ubiquitination and degradation. Furthermore, CBL desensitizes EGF signaling and opposes cellular proliferation induced by EGF [15]. EGF activation also appears to activate the tyrosine kinase SRC, which phosphorylates c-CBL and in turn activates the ubiquitination and degradation of EGFR [16,17,18]. A recent study shows that defective endocytosis of EGFR is characterized by a deletion mutant and the point mutation L858R, whereby its association with c-CBL and subsequent ubiquitination are impaired [19]. Recently, the first human c-CBL mutations were reported in acute myeloid leukemia (AML) patients [20]. The mutation R420Q inhibits FMS-like tyrosine kinase 3 (FLT3) internalization and ubiquitination [20].

Not only can E3 activity be important in oncogenesis, c-CBL has a dual but separate function as a signal transduction molecule. We have previously shown that c-CBL is important in binding CRKL and BCR/ABL in hematopoietic cells. Also, it can bind and modulate functions of cytoskeleton by binding to proteins like talin and paxillin. The TKB domain is important in binding to a number of molecules, and they then function in signal transduction.

Given the critical role of CBL in normal homeostasis and cancer, we hypothesized that it might be mutated in lung cancers. In this study, we report novel c-CBL somatic mutations S80N/H94Y, Q249E and W802\* in Caucasian, Taiwanese and African-American lung cancer patients, respectively. Expressing these mutations in NSCLC cell lines lead to increased proliferation and cell motility. We show that c-CBL mutations occur with or without MET or EGFR mutations but are mutually exclusive of a LOH at the c-CBL locus. Additionally, c-CBL LOH is associated with either MET or EGFR mutations. We thus hypothesize that c-CBL mutations might contribute to the oncogenic potential of MET and EGFR in lung cancer.

## Methods

### Ethics Statement

Written consent on all research on human subjects has been obtained from the Institutional Review Board, University of Chicago and covers all research performed in the laboratory. The following is their contact information: Institutional Review Board, The University of Chicago, McGiffert Hall, 5751 S. Woodlawn Ave., 2nd floor, Chicago, IL 60637. Written informed consents were received from all patients whose tissue samples were used for this study.

### Tissue Samples

Lung cancer tissue and paired adjacent normal lung tissues were obtained from 50 Caucasian, 29 African-Americans and 40 Taiwanese NSCLC patients who were recruited at the University of Chicago Hospital (Chicago, USA) (Caucasian and African-American patients) and Taipei Veterans General Hospital of Taiwan (Taiwanese patients) after obtaining appropriate Institu-

tional Review Board permission and informed consent from the patients. Out of 119 samples, 77 were men, 38 were women and 4 were unknown with age at diagnosis ranging from 47 to 90 years. In terms of tumor types, 53 were adenocarcinoma, 32 were squamous cell carcinoma and 34 were large cell carcinoma. 49 were stage I, 14 were stage II, 34 were stage III, and 13 were stage IV (**Table S1**).

### Cell Culture

Human non-small cell lung carcinoma cells A549 and H358 were maintained in DMEM and RPMI-1640, respectively. Human embryonic kidney 293T cells were cultured in DMEM. Media were supplemented with 10% fetal bovine serum, 100 units/ml of penicillin, and 100 µg/ml of streptomycin (Invitrogen, Carlsbad, CA). Cells were cultured at 37°C in a humidified incubator containing 5% CO<sub>2</sub>.

### c-CBL Gene Mutational Analysis

Exons 2 to 16 of c-CBL gene were individually amplified by polymerase chain reaction (PCR). Primers are listed in **Table S2**. PCR conditions were 1 cycle of 95°C for 5 minutes; 35 cycles of 94°C for 30 seconds, 58°C for 30 seconds and 72°C for 2 minutes; and one cycle of 72°C for 10 minutes. PCR products were treated with ExoSAP-IT (USB Corporation, Cleveland, OH) and sequenced by Big-Dye Terminator Chemistry (Applied Biosystems, Foster City, CA). Sequencing was performed on the forward coding strand with confirmation of c-CBL alterations performed by sequencing the reverse strand as well. Chromatograms were analyzed for mutations using Mutation Surveyor v2.61 (Softgenetics, State College, PA).

### Plasmid Constructs and Site-Directed Mutagenesis

The wild-type c-CBL cDNA insert was subcloned into the pAlterMax expression vector using *XhoI* and *SaI* restriction enzyme sites (Promega, Madison, WI). Using this parental plasmid pAlterMax-c-CBL, the TKB domain double mutation (S80N/H94Y), the point mutation (Q249E), and the C-terminal point mutation W802\* of c-CBL were created using the following primers: 5'-GCTGGCGCTAAAGAATAACCCACCTTATATCTTAGAC-3' and 5'-CTACCAGATACCTACCAGTATCTCCGTACTATCTTGTGTC-3' for the double mutation S80N/H94Y; 5'-CTTTACCCGACTCTTTGAGCCCTGGTCCTCTTTGTC-3' for Q249E, and 5'-CAGCTCCTCCTTTGCTGATTGTCTCTGGATGGTGATC-3' for W802\* along with their complementary primers using the QuickChange Site-Directed Mutagenesis XL kit (Stratagene, La Jolla, CA) according to the manufacturer's instructions. The constructs were confirmed for the point mutations by standard DNA sequencing of both strands.

### Loss of Heterozygosity (LOH) Analysis

Five microsatellites on chromosome 11 (3 on 11q at or within 200 kb up or downstream of the c-CBL gene and 2 control markers on 11p) were selected for analysis (**Table S3**). Established microsatellite markers and respective primer sequences were selected from the GeneLoc database (<http://genecards.weizmann.ac.il/geneloc/index.shtml>, Weizmann Institute of Science, Rehovot, Israel). Primers were custom designed and each forward primer was fluorescently labeled at the 5' end with FAM, PET, NED, or VIC (Applied Biosystems). Primer annealing temperatures and duplex scores were evaluated with NIST Primer Tools (<http://yellow.nist.gov:8444/dnaAnalysis/primerToolsPage.do>; National Institute of Standards and Technology, Gaithersburg, MD). Primers

were verified by performing PCR with control DNA (isolated from TK6 cells) and resolving the products on agarose gels. Bands were visualized with an UV transilluminator. Genomic DNA was extracted from tumor samples and paired normal lung tissue. Primers were grouped into multiplex combinations shown in **Table S4**. Marker D11S929 served as an internal control to check for consistency in PCRs and of peaks from capillary electrophoresis. Multiplex PCRs were carried out in a volume of 10  $\mu$ L that contained 1  $\mu$ L genomic DNA (20–50 ng), 0.5  $\mu$ M of each primer (1.0  $\mu$ M total for each primer pair), 400  $\mu$ M dNTPs, 1X PCR buffer containing  $MgCl_2$ , and 0.2 U *Taq* DNA polymerase. PCR was performed on the ABI GeneAmp 9700 PCR System under the following conditions: 5 min at 94°C; 30 cycles of 30 sec at 94°C, 1 min at 60°C, 1 min at 72°C; and 5 min at 72°C. The PCR products were separated by capillary electrophoresis on an ABI 3130XL DNA Analyzer. Chromatograms were analyzed with Peak Scanner 1.0 and GeneMapper 3.7 software (Applied Biosystems) for allelic alterations. The area of the peaks produced by the DNA PCR products was quantified for each allele. The ratio of the allelic areas was calculated for each tumor and paired normal DNA sample. When the qLOH (allelic ratio for the tumor peaks divided by the allelic ratio of paired normal sample) was  $\leq 0.5$  or  $\geq 2.0$  for *c-CBL* and at least one other 11q marker in at least two separate experiments, the sample was considered as having an allelic imbalance and interpreted as LOH. Samples were evaluated in at least two separate experiments and samples showing prospective LOH at *c-CBL* repeated a third time which included a new control marker at the *BAX* locus (data not shown) on chromosome 19 to verify integrity of sample DNA.

### Transfection of *c-Cbl* Constructs

The A549 cell line was transfected using the Fugene HD (Roche, Nutley, NJ) reagent according to the manufacturer's instructions. Eight  $\mu$ g of plasmid DNA, containing either no insert (empty vector), wild-type *c-CBL*, S80N/H94Y *c-CBL*, Q249E *c-CBL* or W802\* *CBL* was used for transfection in a 6-well culture plate. Cells were harvested 48 h after transfection and analyzed for expression.

### *c-CBL* Knockdown

*c-CBL* knockdown was performed using lentiviral transduction using MISSION lentiviral transduction particles (Sigma-Aldrich, St. Louis, MO) as per manufacturer's instructions. Briefly,  $1 \times 10^5$  H358 cells/well were seeded in 6-well plates and infected the following day with *c-CBL* lentiviral shRNA constructs. To generate stable *c-CBL* knockdown cell lines, cells were selected for 2 days with 1  $\mu$ g/ml puromycin. *c-CBL* levels were determined using whole cell lysates by immunoblotting with anti-CBL antibody (Santa Cruz Biotechnologies, Santa Cruz, CA).

### Cell Viability Assay

Cells were transfected as described above in the transfection assay. Forty-eight hours after transfection, viability of cells was assessed using Trypan Blue exclusion.

### Wound Healing Assay

A549 cells were seeded in 6-well plates and cultured for 48 h until 100% confluent. The medium was then changed and the cells were transfected as described in the transfection assay. Twelve hours after transfection, a straight scratch was made across the cell layer using a 1 ml pipette tip. The cells were then gently washed with  $1 \times$  PBS to remove cellular debris and the media was replaced. Photographs were taken of the wound region every 12 h until 48 h.

### Western Blot Analysis

Forty eight hours after transfection, cells were collected and washed twice in 1X PBS, then lysed in ice-cold lysis buffer (0.5M Tris-HCl with pH 7.4, 1.5 M NaCl, 2.5% deoxycholic acid, 10 mM EDTA, 10% NP-40, 0.5 mM DTT, 1 mM phenylmethylsulfonyl fluoride, 5  $\mu$ g/mL leupeptin, and 10  $\mu$ g/mL aprotinin) for 5 minutes. The lysate was centrifuged at 13,000 rpm for 20 minutes at 4°C, and protein content of the supernatant was measured. Total cell lysates (50  $\mu$ g/well) were separated by SDS-PAGE electrophoresis and the gels transferred onto nitrocellulose membranes (Whatman, Piscataway, NJ). Membranes were blocked with 5% non-fat dry milk in phosphate-buffered saline containing Tween-20 (PBST) (1X PBS, 0.1% Tween-20) for 1 h at room temperature and incubated with the appropriate primary antibody at 4°C overnight. Membranes then were washed three times with PBST and probed with appropriate horseradish peroxidase (HRP)-conjugated secondary antibody for 1 h at room temperature. The membranes were again washed three times in PBST and bands were visualized using Western blot chemiluminescence reagent (BioRad, Valencia, CA) on a Chemidoc Gel documentation system (BioRad, Valencia, CA). Antibodies were obtained from Santa Cruz Biotechnologies and used at the following dilutions (*c-CBL*, 1:5000; *c-MET*, 1:5000; EGFR, 1:5000; ubiquitin, 1:1000; HA, 1:5000 and  $\beta$ -actin, 1:10,000).

### Flow Cytometry

Cell cycle analysis was carried out by flow cytometry. Approximately  $2 \times 10^6$  cells were grown in media containing 10% FBS. Cells were harvested by trypsin/EDTA treatment, washed with 1X PBS three times and fixed with ice-cold 70% ethanol for 2 h. Cells were washed again with cold PBS and stained with a solution containing 25  $\mu$ g/mL propidium iodide, 200  $\mu$ g/mL RNase A, and 0.1% Triton X-100 for 30 minutes in the dark. Cell cycle analysis was performed using a Guava PCA-96 flow cytometer (Guava Technologies, Millipore, Billerica, MA).

### Ubiquitin Ligase Activity

293T cells were maintained in culture in DMEM supplemented with 10% FBS and 1% penicillin (100 units/mL) and streptomycin (100  $\mu$ g/mL) were transfected with 0.2  $\mu$ g EGFR-pcDNA3 and 2  $\mu$ g HA-tagged *c-CBL* constructs as indicated using calcium phosphate according to manufacturer's protocol (Profection, Promega, Madison, WI). Twenty-four hours post-transfection, cells were starved overnight in DMEM supplemented with 0.5% FBS, and then treated with or without EGF (100 ng/ml) for 15 min. The cells were collected and washed two times in ice-cold PBS containing 0.2 mM sodium orthovanadate then lysed in ice-cold lysis buffer (10 mM Tris HCl, pH 7.5, 150 mM NaCl, 5 mM EDTA, 1% Triton X100, 10% Glycerol, 2 mM sodium orthovanadate and protease inhibitors). Lysates were cleared of debris by centrifugation at 16,000 g for 10 min at 4°C. EGFR immunoprecipitations were performed on 200  $\mu$ g of cleared lysate using 250 ng of rabbit-anti-EGFR and Protein A/G Plus Sepharose overnight at 4°C. Precipitations were washed 5 times in lysis buffer before boiling in Laemmli buffer. Elutions were immunoblotted with anti-ubiquitin and EGFR. Twenty micrograms of cleared lysate were immunoblotted for each of the *c-CBL* constructs using anti-HA.

### Statistical Analysis

Mutation rates between different groups were compared using Fisher's exact test. For continuous variables, group comparisons were performed using analysis of variance (ANOVA) followed by

Sidak's adjustment for multiple comparisons. Experiments involving repeated measurements over time were analyzed using repeated measures ANOVA with the Greenhouse-Geisser adjustment to the degrees of freedom. Analyses were conducted using STATA (v10.1) software (Stata Corporation, College Station, TX).

## Results

### c-CBL Gene Mutations in Lung Cancer

To investigate the role of c-CBL in lung cancer, we analyzed its genomic DNA in tumor and paired normal samples drawn from multiple ethnicities. The lung tumor samples represented Caucasians (n = 50), African-Americans (n = 29), and Taiwanese (n = 40) lung cancer patients. We designed 12 pairs of primers to sequence the coding region of c-CBL gene that spans exons 2 to 16 (Table S2). We identified 8 unique somatic mutations in c-CBL exons among 8 different patients. A variation L620F, a known SNP (rs2227988) in exon 11 was also detected. Importantly, the eight novel non-synonymous mutations were confirmed by sequencing both strands of c-CBL genomic DNA obtained from lung tumor samples (Table 1). Moreover, none of the 8 mutations were detected in the corresponding normal tissue, indicating that these were somatic mutations. Four synonymous single nucleotide variations (SNVs) were also identified but were not used further in this study.

Three of the 8 novel non-synonymous mutations were located in the TKB (tyrosine kinase binding) domain (S80N, H94Y, and Q249E), one in the RING finger domain (V391I), one in the proline-rich region (72515\_72517 del ATG), and three in the C-terminal region (W802\*, R830K, and A848T) of the c-CBL protein (Figure 1A and Figure S1). In Figure 1B, we show model chromatograms of representative samples.

### 11q LOH of c-CBL Gene

Paired lung tumor and normal lung tissue samples from Taiwanese patients (n = 37) were investigated for LOH. Eight (21.6%) showed LOH at the c-CBL locus on chromosome 11 while 29 samples (78.4%) revealed normal allelic contribution at the microsatellite markers (Figures 1C and D).

### c-CBL Mutations in Different Ethnic Groups

The c-CBL double mutant S80N/H94Y was found in the same patient and the overall mutation rate for c-CBL in lung tumors

was 6.7% (8/119). The frequency of c-CBL mutation was highest in large cell carcinoma (14.7%; 5 of 34 patients) followed by squamous carcinoma (6.3%; 2 of 32 patients) and the least was observed in adenocarcinoma (AD) (1.8%; 1 of 53 patients), although these rates were not statistically significant (p = 0.292). Mutation rates were 6.0% among Caucasians (0 of 20 in AD; 0 of 10 in SQ; and 3 of 20 in LC), 13.8% in African-Americans (1 of 10 in AD; 1 of 10 in SQ; and 2 of 9 in LC), and 2.5% (0 of 23 in AD; 1 of 12 in SQ; and 0 of 5 in LC) in the Taiwanese population. Additionally two Taiwanese patients with lung cancer (one squamous and one adenocarcinoma) had the known SNP L620F. Ethnic differences were not statistically significant, however the power to detect differences was low.

### Mutations in MET and EGFR Can Be Co-Associated with c-CBL Alterations

Since East Asians with lung cancer have a higher frequency of EGFR and MET mutations in lung tumors [21,22], we also determined mutations in EGFR and MET in the same Taiwanese cohort samples and compared the results with the observed c-CBL alterations (LOH and/or mutations). In the 37 samples tested, we did not find any overlap between c-CBL mutations and c-CBL LOH (Figure 2). Of the three c-CBL mutants (including the known L620F SNP, rs2227988), one of the samples had a MET mutation (N375S) and the other had an EGFR mutation (L858R). Among the 8 samples that had a LOH at the c-CBL locus 5 had an additional mutation in MET (N375S) and 2 had an EGFR exon 19 deletion. Twenty-six samples had neither c-CBL mutation nor c-CBL LOH (3 patients had a c-CBL mutation but no c-CBL LOH). Among these 26 samples 9 had a MET mutation (8 N375S, 1 L211W), 13 had an EGFR mutation (7 exon 9 deletion, 6 L858R) and 4 had no other MET or EGFR mutation. Thus the rate of MET or EGFR mutations among patients with LOH at the c-CBL locus (7 of 8) was similar to that seen in patients without c-CBL mutation or LOH (22 of 26 patients) (p = 0.99). These 4 patients with no identifiable mutation in c-CBL, MET or EGFR represented 10.8% of the 37 patients analyzed in the Taiwanese patient cohort. Conversely, 89.2% Taiwanese lung cancer patients have an identifiable mutation in either c-CBL, MET or EGFR or a combination of the three genes (Figure 2). Additionally, we determined p53 and KRAS mutations in these Taiwanese cohorts. Two p53 and 1 KRAS mutation were detected. The single KRAS mutation overlapped with

**Table 1.** c-CBL mutation analysis in 119 lung cancer patient tumor tissues.

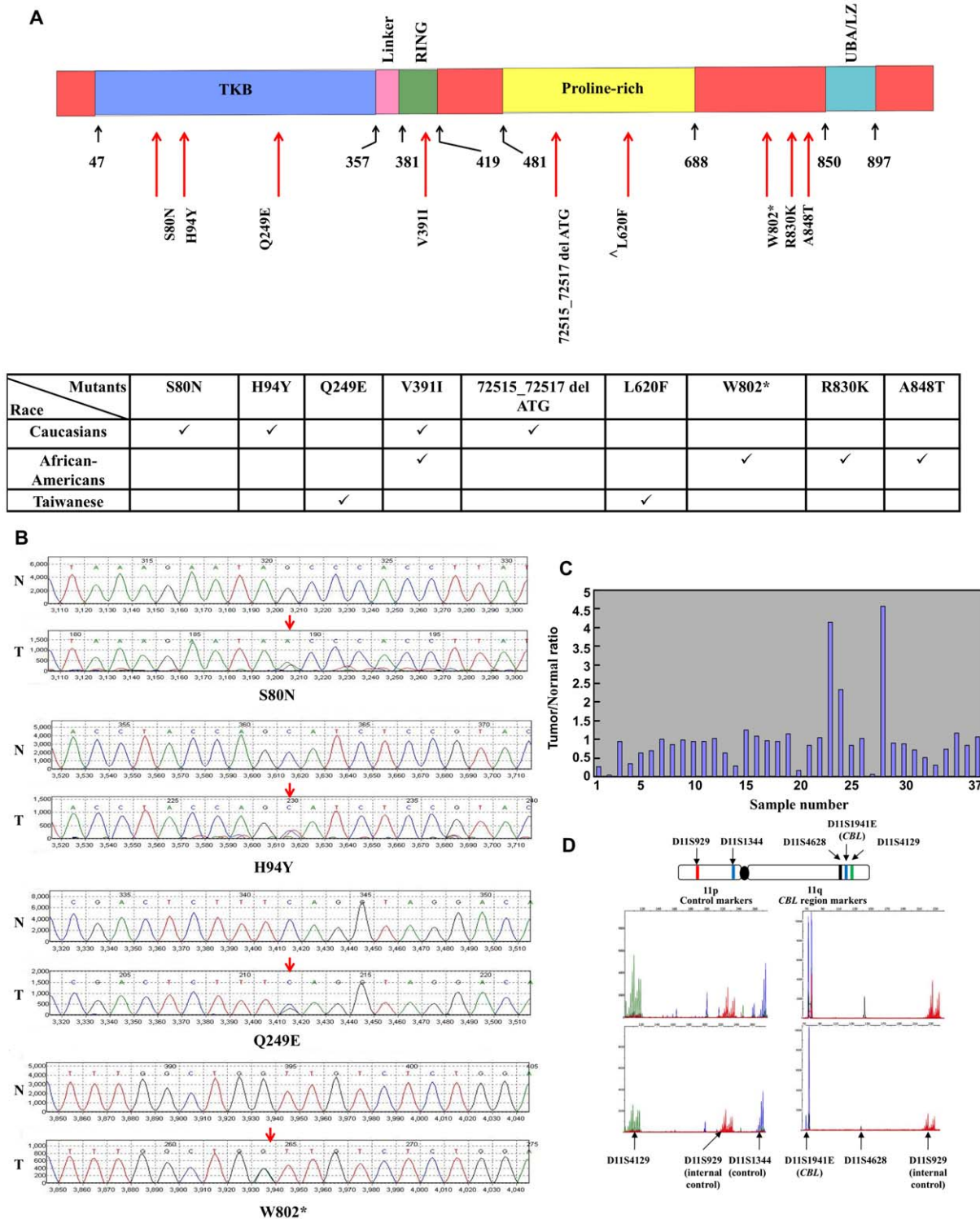
Location	Mutation	Domain	Numbers of Sample (Frequency)		
			Caucasian (50)*	African-American (29)*	Taiwanese (40)*
Exon 2	26354 G>AG (S80N)#	TKB	1 (2%)	0	0
	26395 C>CT (H94Y)#	TKB	1 (2%)	0	0
Exon 4	67885 C>CG (Q249E)	TKB	0	0	1 (2.5%)
Exon 8	72104 G>AG (V391I)	RING	1 (2%)	1 (3.5%)	0
Exon 9	72515_72517 del ATG	Pro-rich	1 (2%)	0	0
Exon 11	79346 C>CT (L620F) ^	Pro-rich	0	0	2 (5%)
Exon 15	92375 G>AG (W802*)	C-terminal	0	1 (3.5%)	0
Exon 16	93412 G>AG (R830K)	C-terminal	0	1 (3.5%)	0
	93465 G>AG (A848T)	C-terminal	0	1 (3.5%)	0

\* ( ) indicates number of samples.

# S80N and H94Y mutations were found in the same patient.

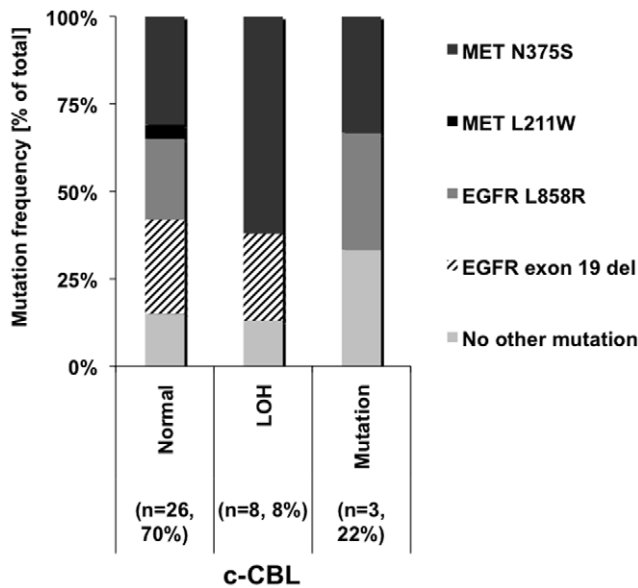
^ Known SNP.

doi:10.1371/journal.pone.0008972.t001



**Figure 1. c-CBL mutations and LOH in non-small cell lung cancer.** (A) Schematic illustration of the various c-CBL mutants with respect to the different functional domains. Three mutations: S80N, H94Y, Q249E were located on the TKB domain; V391I was located on the RING finger domain; 72515\_72517 del.ATG (a non-frameshift deletion) and L620F (a known SNP, rs2227988) were located on Pro-rich region and W802\*, R830K, and A848T were found in the C-terminal region of c-CBL. The numbers shown represent amino acid positions. Association of c-CBL mutations among different ethnic populations is shown in the table ( $\wedge$  known SNP). (B) Representative examples of sequencing chromatograms of the mutation region in normal (N) and tumor (T) samples. Arrows indicate the heterozygous mutation in the tumor sample. (C) Loss of Heterozygosity (LOH) analysis of 37 tumor and paired normal samples from Taiwanese patients. A value of  $< 0.5$  indicates a LOH at the c-CBL locus. (D) Schematic of Chromosome 11 markers chosen for LOH analysis and representative examples of LOH chromatogram analysis. After amplification using chromosome 11 specific microsatellite primers, the PCR product was separated by capillary electrophoresis and bands were quantified according to the intensity. doi:10.1371/journal.pone.0008972.g001





**Figure 2. c-CBL mutations and relationship to MET and EGFR mutations in lung cancer.** 37 Taiwanese samples were analyzed for mutations in c-CBL, MET and EGFR and for LOH analysis in the c-CBL locus. Data shows 21.6% (8/37) had LOH, whereas 8% (3/37) had a c-CBL mutation (including the known SNP L620F), these samples were mutually exclusive. Additionally, 5 of 8 LOH samples also had MET N375S mutation and 2 had EGFR exon 19 deletion. In the samples having c-CBL mutation, 1 also had MET N375S mutation while another had EGFR L858R mutation. In samples that did not harbor any c-CBL mutation (70%, 26/37), 22 had either a MET or an EGFR mutation and only 4 did not have a mutation in any of these 3 genes. doi:10.1371/journal.pone.0008972.g002

one *p53* mutation. This patient also had the EGFR exon 19 deletion but had no c-CBL mutation. The other *p53* mutation sample had a c-CBL LOH with concurrent MET N375S mutation. Thus, in the Taiwanese samples analyzed, *p53/KRAS* mutations and c-CBL mutations were mutually exclusive (data not shown).

### Cellular Functions of c-CBL Alterations in the Context of Lung Tumorigenesis

**A. E3 activity is intact in the mutant c-CBL proteins.** To investigate whether the different c-CBL mutations affect the E3 activity, EGFR was chosen as a model substrate for c-CBL E3 function. All of the c-CBL mutants tested enhanced ubiquitination of the activated EGFR similar to the wild-type c-CBL protein. This result demonstrates that the catalytic activity of the c-CBL mutants is not impaired when EGFR was the substrate. (Figure 3A).

**B. Effect on lung cancer cell viability.** The effect of a representative c-CBL mutant from each of the three ethnic backgrounds on lung cancer cell viability in cell lines was determined. S80N/H94Y double mutation, Q249E, and W802\* were identified in lung tumor samples obtained from a Caucasian, a Taiwanese and an African-American, respectively. As described in methods, the c-CBL wild-type (WT) and the above three mutants were expressed after cloning them into pAlterMax vector in A549 cells. These cells express relatively low basal levels of endogenous c-CBL (data not shown). Transfection efficiency was comparable between different groups and the number of cells transfected with c-CBL wild-type construct was about 70% compared to control cells that were transfected with the empty vector. Cells transfected with S80N/H94Y, Q249E and W802\* c-

CBL mutant constructs resulted in increased number of viable cells that was 132.3%, 120.8% and 147.9% higher respectively, relative to the empty vector control transfected cells and significantly different from the wild-type construct ( $p = 0.022$ ,  $p = 0.049$ , and  $p = 0.008$ , respectively) (Figure 3B). Relative levels of c-CBL protein in whole cell lysates prepared from samples obtained from a parallel experiment was determined. The c-CBL protein levels in samples representing untransfected and empty vector transfected cells were comparable and those representing the c-CBL WT and the three c-CBL mutants were comparable (Figure 3C).

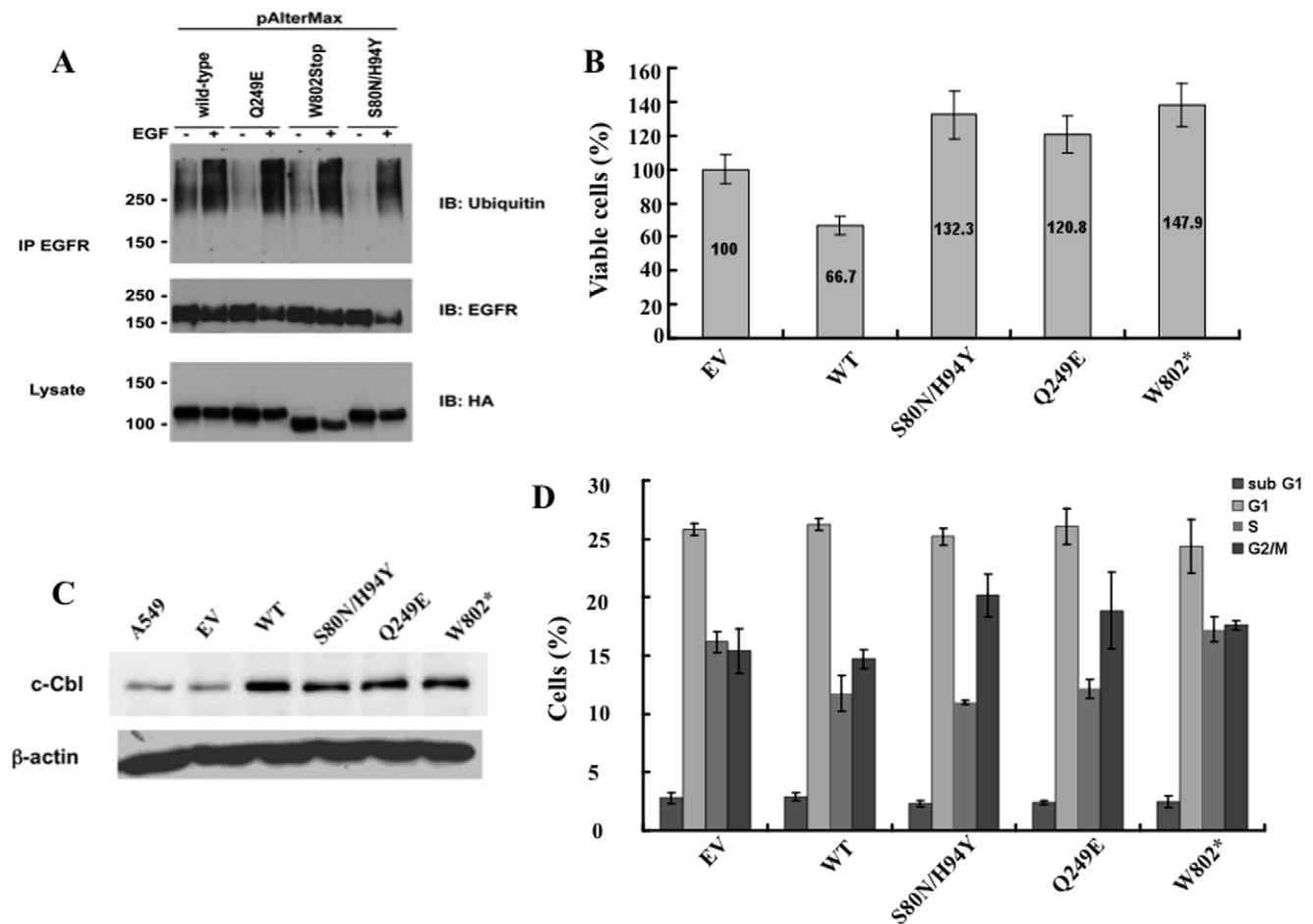
**C. Effect on cell cycle.** To investigate if the increases in cell viability in different c-CBL mutants are due to increased cellular proliferation, a cell cycle analysis was performed. A549 cells were transfected with the c-CBL WT or the three different mutants: S80N/H94Y, Q249E and W802\*. The empty vector transfectant was used as a control. Forty-eight hours after transfection cell cycle analysis was performed as described in materials and methods. There was no significant change in the subG1, G1 or the S phase of the cell cycle among the different mutants compared to the WT construct ( $p = 0.64$ ,  $p = 0.40$ , and  $p = 0.28$ , respectively). The G2/M phase of the cell cycle showed an increase in cell numbers for the three mutants, S80N/H94Y, Q249E and W802\*, when compared to the WT but again the difference was not statistically significant ( $p = 0.25$ ) (Figure 3D).

**D. Effect on cell motility.** To investigate the effect of the expression of the above three c-CBL mutants on cell migration, we carried out wound healing assay as described in materials and methods. The closing of the scratch or the wound was monitored at 0, 12, 24, 36, and 48 h. (Figure 4A). In all the samples, that represented cells transfected with mutants, the wound gap was much smaller than that seen in the sample that represented cells transfected with c-CBL WT ( $p < 0.001$ ). We also determined the rate of wound closure for all the five groups. At 48 h, wild-type c-CBL transfectants showed 61.1% open wound while the S80N/H94Y, Q249E and W802\* mutants showed 18.7%, 23.9% and 34.3% open wound respectively ( $p < 0.001$ ) (Figure 4B).

**E. c-CBL knockdown increases cell viability.** It is hypothesized that the LOH seen in our samples could lead to decreased expression of c-CBL. Thus we tested the effect of c-CBL knockdown in lung cancer cells. Compared to A549, H358 lung cancer cells express relatively high levels of endogenous c-CBL (data not shown). c-CBL expression was knocked down using lentiviral construct that expressed c-CBL specific shRNA and compared the results with those that were transduced with scrambled shRNA and the results are shown in Figure 5. We identified several clones that revealed varying degrees of c-CBL knockdown showing different sets of c-CBL lentiviral shRNA knockdown efficiency (Figure 5A). Of all the clones tested, Clone 27 was chosen for further experiments. Equal amount of cells were seeded in a 6-well plate and the cell proliferation was measured at various times and the results are depicted in Figure 5B. As expected, number of cells increased in a time dependent fashion from 100 to 190% relative to scrambled shRNA as control in a span of 48 h ( $p = 0.0002$ ) (Figure 5B). The cell cycle phases in H358 cells that were knocked down with c-CBL shRNA were looked at and compared with the scrambled shRNA. There were no discernable differences between these two constructs in the different phases of the cell cycle (data not shown).

## Discussion

Our results demonstrate that c-CBL is somatically mutated (or has LOH) in lung cancers, and can significantly contribute to enhanced cell viability and motility. There was also a high



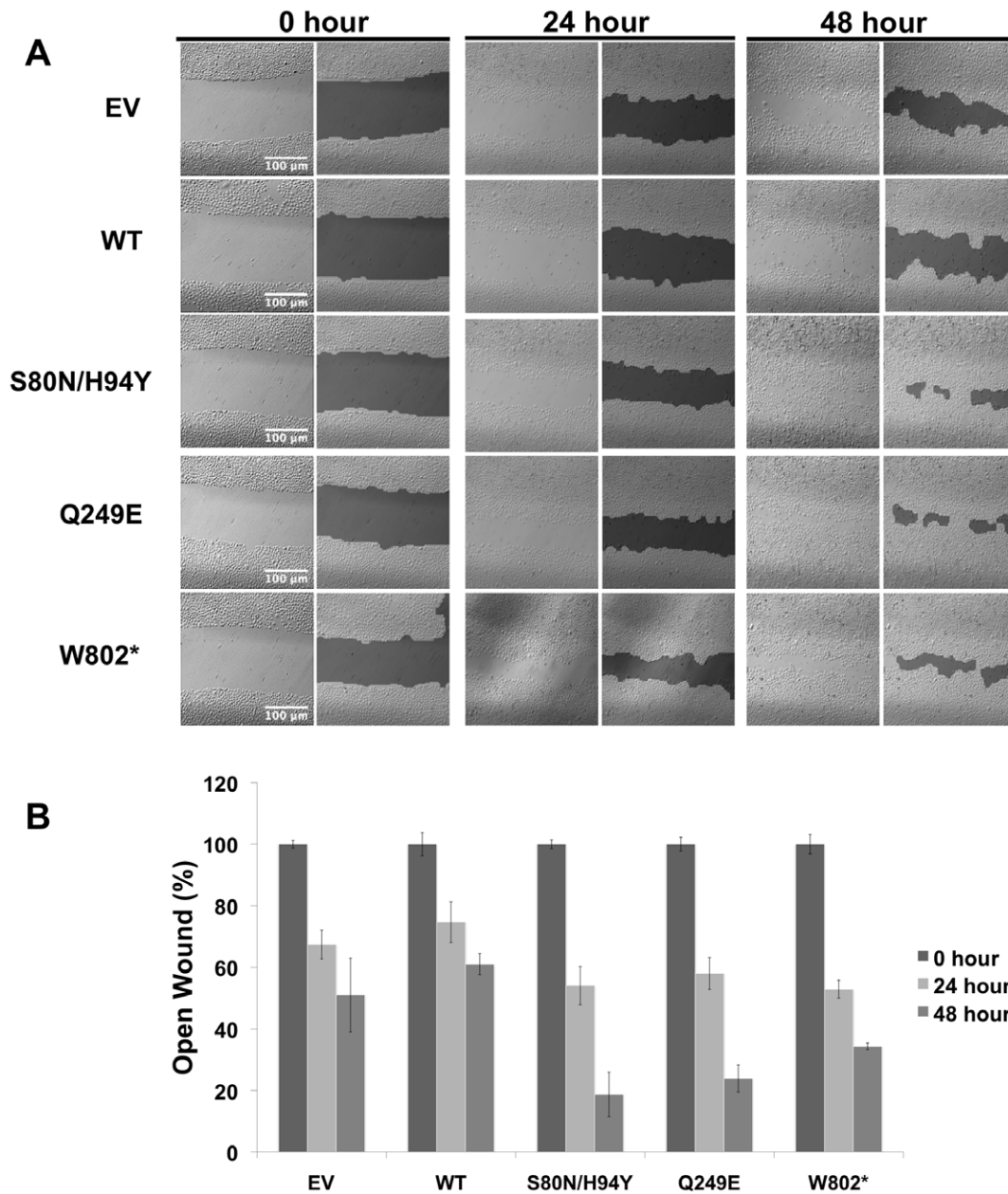
**Figure 3. Ubiquitination, viability, expression and cell cycle analysis of various c-CBL mutants.** (A) c-CBL mutants do not alter ubiquitination of EGFR. Cells were co-transfected with EGFR and different c-CBL mutants were stimulated with EGF, immunoprecipitated with anti-EGFR antibody and blotted with anti-ubiquitin antibody. Immunoblot with anti-EGFR antibody served as the IP control, while the anti-HA blot was used as the input control. (B) Cell viability was measured by Trypan blue exclusion and compared to empty vector control. c-CBL wild-type (WT) and mutants S80N/H94Y, Q249E, and W802\* showed 66.7%, 132.3%, 120.8%, and 147.9% cell viability respectively in A549 cells 48h after transfection. Experiments were done in triplicates and the mean data is shown. Error bars indicate Standard Deviation. (C) Protein expression levels of the various mutants were analyzed by Western blots using c-CBL antibody. (D) Cell cycle analysis of different c-CBL mutants 48 h after transfection in A549 cells. doi:10.1371/journal.pone.0008972.g003

prevalence of LOH with respect to c-CBL in lung tumors that harbored *MET* or *EGFR* mutation.

In the present study, we have demonstrated the occurrence of c-CBL mutations in lung cancer patients, especially with different ancestral variations. Mutations in c-CBL have been recently reported in juvenile myelomonocytic leukemia and myeloid malignancies. In the AML study, the mutation R420Q located in the junction of the RING finger and the linker region inhibited FMS-like tyrosine kinase 3 (FLT3) internalization and ubiquitination [20], thus contributing to the gain-in-function for the RTK. In addition, mutations such as H398Y, C384R, and L380P mapped to the RING finger domain and the linker region of c-CBL that is required for its E3 activity [23,24,25,26,27]. Additionally, homozygous mutations in the RING finger domain of the c-CBL gene were described as a result of acquired Uniparental Disomy (UPD) [26]. It is important to note that our results indicate LOH at 11q23 locus and these are mutually exclusive from missense mutations of c-CBL. The somatic mutations were all heterozygous. The mutations in AML led to abrogation of the E3 activity leading to prolonged RTK activation. In addition mutants located on the linker region surrounding the RING finger domain exhibited enhanced AKT

signaling in response to cytokine stimulation [26]. In addition, it was shown in NH3T3 cells, that neither mutations in the RING finger nor the linker region causes transformation, however while certain mutations perturb the ubiquitination, others affect receptor recycling and prolong kinase activity [28].

We report here c-CBL mutations that mapped not only to the RING finger domain, but also to the TKB domain, proline-rich domain and the C-terminal region, but none mapped to the linker region as reported in the AML studies described above [23,24,25,26,29]. In addition, 8 mutants that we detected were found in different ethnic backgrounds. For example, S80N/H94Y, Q249E, W802\* were detected in Caucasians, Taiwanese and African-Americans, respectively. The results point out not only the difference between lung cancer and other cancers, but also genetic polymorphism among different races in the same cancer. Interestingly, there is a large disparity between African-American and other ethnic populations with lung cancer [30]. We have previously shown that there was a low frequency of EGFR and MET mutation in African-Americans as compared with Taiwanese and Caucasians [31]. In this study, the number of African-American samples analyzed was relatively fewer and we found 3 mutations that are

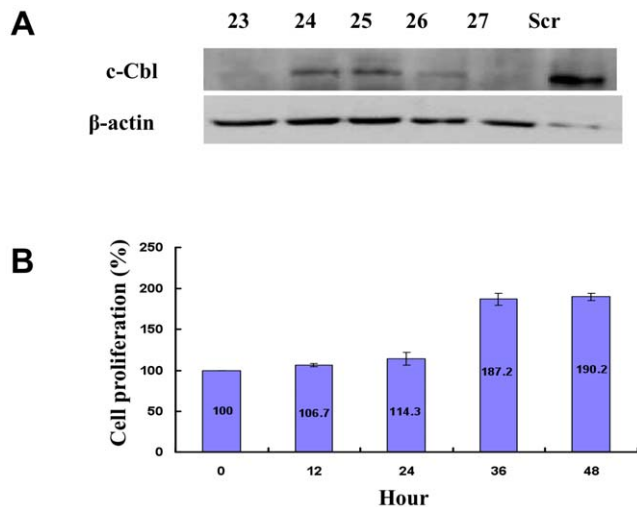


**Figure 4. c-CBL mutations affect wound healing in A549 cells.** (A) Wound healing assay was performed in A549 cells transfected with WT c-CBL or different mutants. Empty vector (EV) was used as a control. Representative pictures (Brightfield and phase contrast) from each timepoint are shown. (B) The open wound at each time point was quantified and normalized to 0 h. Experiments were done in triplicate and the mean data is shown. Error bars indicate Standard Deviation. doi:10.1371/journal.pone.0008972.g004

unique to this ethnicity. It would now behoove us to further study the genetic alterations that can occur and determine the targeted therapeutics for African-Americans. Our results provide evidence of the importance of c-CBL in tumorigenesis and potential signaling. Our prediction, based on the AML data, would be that the V391I RING finger domain mutation would affect the E3 activity. Also, it will be important to determine the binding partners for c-CBL in the TKB domain and proline rich domain mutations. It has previously been shown that the TKB domain can bind to growth factor receptors and it will be important to determine the cross-binding of these mutants to MET and or EGFR. It would also be important in the future to look at fluorescence in situ hybridization/copy number changes in *c-CBL* in lung cancer.

c-CBL plays an important role in down regulating RTK-mediated signaling through K63 poly-ubiquitination and subsequent downregulation of RTKs followed by lysosomal degradation [3]. Mono-ubiquitination or ubiquitinated with K63-linked chains of substrates by c-CBL may lead to enhancement of biological and biochemical functions (reviewed in Hermann et al, 2007 [32]). The mutations that we analyzed in our studies all point out to the fact that the E3 activity of c-CBL on EGFR is intact; the EGFR levels in the various mutants remain same (**Figure S2**). Multiple kinases, both RTKs and non-RTKs could be acted upon by c-CBL, including ERBs, PDGFR, FMS, MET, c-Kit, VEGFR, FLT-1, RON, FGFR, IR, as well as SYK, FYN, LCK, FGR, LYN and c-ABL [3]. In lung cancers the relevant





**Figure 5. Knockdown of c-CBL using an shRNA increases cell proliferation.** (A) Western blots of different c-CBL shRNA constructs showing knockdown efficiency of different clones. Scrambled shRNA was used as a control. (B) Lung cancer cell line H358 stably transfected with shRNA clone 27 showed an increase in cell counts compared to the scrambled shRNA control. Experiments were done in triplicates and the mean data is shown. Error bars indicate Standard Deviation. doi:10.1371/journal.pone.0008972.g005

substrates of c-CBL in terms of degradation or signal transduction are yet to be identified.

The observation that c-CBL somatic mutations, especially S80N/H94Y, Q249E and W802\* showed increased cell viability and cell motility that is in agreement with the physiological role for D-cbl in the regulation of apoptosis and differentiation identified in *Drosophila* is very significant [33]. It has been previously shown that activating c-CBL mutation downregulates EGFR signaling and decreases cellular proliferation and migration in breast cancer cell lines [34]. Although the role of c-CBL in the negative regulation of RTKs is well substantiated, thereby suggesting that it is a natural tumor suppressor, studies in cancer cells have revealed both tumor suppressor and tumor promoting activities depending on the type of c-CBL mutation and the number of alleles at the c-CBL locus [24]. In agreement with the above, the three c-CBL mutants described here appear to have tumor growth and metastasis promoting properties. Although these mutants are outside of the RING finger or the linker region of c-CBL, their downstream effects are significant so as to cause increased proliferation and migration, but the substrate affected by these mutations are not known yet. This raises the possibility that some of the cellular functions of c-CBL are independent of its ubiquitin-ligase activity, an area that we are currently investigating. The oncogenic nature of RTKs, addiction of cancers to growth signals and given the clustering of c-CBL, EGFR and MET mutations, it is possible that the transforming effect of c-CBL mutations is most likely a combinatorial effect of the three. We also show that LOH for c-CBL was found in a significant number of samples that harbored MET or EGFR mutations. The fact that about 7% of lung tumor samples are likely to have c-CBL mutations and an additional 22% are likely to harbor c-CBL-related LOH, makes c-CBL a highly mutated molecule in lung cancer. Since LOH alone is not enough to cause a transforming event [35,36,37], associated mutation in the MET or EGFR locus or yet another RTK discussed above may play a role in carcinogenesis. We predict that this LOH in c-CBL results in haploinsufficiency that downplays RTK ubiquitination leading to hyperactivity of the RTKs.

However, whether this is sufficient cause for tumorigenesis remains to be determined. Consistent with our hypothesis is the fact that c-cbl<sup>-/-</sup> mice have increased kinase activity in lymphocytes, but is not sufficient for tumor formation [35,36,37]. c-CBL LOH could also lead to increased expression of c-CBL from the other allele to compensate for a loss of an allele. Alternately, there could be some form of synergy working with reduced c-CBL levels and mutated receptors that exacerbate the phenotype of each alone.

Previous studies from our lab and others have shown that East Asians with lung cancers have relatively high frequencies of gain-of-function of mutations in RTKs such as EGFR and MET [31]. In a cohort of Japanese patients an activating MET mutation was identified in the splice region that deletes the juxtamembrane domain that is involved E3 activity of c-CBL [38]. This study also found that activation of MET is mutually exclusive of EGFR, KRAS and HER2 gene mutations [38]. We failed to detect such mutations in significant numbers in lung tumor samples obtained from African-Americans (n = 29) and Caucasian (n = 50) patients. One MET mutation was identified in each of the groups whereas 1 and 3 EGFR mutations were identified in the African-American and Caucasian cohorts respectively. EGFR mutations have earlier been identified as one of the key mutations affecting lung adenocarcinoma patients in a comprehensive study of 188 patients [39]. Our study encompasses different histologies of NSCLC. However, the published series did not find any mutations in c-CBL or MET unlike our study that encompassed different subtypes of NSCLC. It is important to note, we have recently shown that MET mutations in lung cancer are in majority germline [31]. We have reported earlier c-CBL mutations in a small cohort of Taiwanese lung cancer samples [40]. In our efforts to understand the ethnic differences in the lung oncogenome, we also looked at PAX transcription factors such as PAX5 and PAX8 that are highly expressed in lung cancers; however there was no preferential expression or mutations of the above genes in lung tumor samples of African-Americans. In this study, we show relatively high frequency of c-CBL mutations in lung cancers, especially in the large cell type among Caucasians and particularly among African-Americans. We therefore propose c-CBL as an efficacious target for lung cancers in African-Americans that needs to be further substantiated. This is all the more important because the prognosis for African-Americans with lung cancer, especially for men is much poorer compared to their Caucasian counterparts [41].

In conclusion, the results presented in this study demonstrate that c-CBL is frequently mutated or even lost in lung cancers. Our results support a role for c-CBL mutants that are independent of its ubiquitination activity. Given the relatively high mutation rates in c-CBL as well as RTKs such as MET and EGFR, it is likely that their combined effect could be synergistic in promoting tumorigenesis.

## Supporting Information

**Figure S1** Schematic of c-CBL domains and associated exons. Numbers at the top indicate amino acid residues flanking the domains. Found at: doi:10.1371/journal.pone.0008972.s001 (0.42 MB TIF)

**Figure S2** Western blot showing EGFR levels in different c-CBL mutants used in the study. EGFR levels were relatively unchanged among the three mutants compared to wild-type c-CBL. β-actin was used as a loading control. Found at: doi:10.1371/journal.pone.0008972.s002 (3.00 MB TIF)

**Table S1** Number of samples analyzed in patients by race and sub-type of lung cancer. Found at: doi:10.1371/journal.pone.0008972.s003 (0.03 MB DOC)

**Table S2** c-Cbl PCR amplification primers.

Found at: doi:10.1371/journal.pone.0008972.s004 (0.04 MB DOC)

**Table S3** Microsatellites and primer information.

Found at: doi:10.1371/journal.pone.0008972.s005 (0.03 MB DOC)

**Table S4** Multiplex primer sets for LOH analysis.

Found at: doi:10.1371/journal.pone.0008972.s006 (0.03 MB DOC)

**References**

- Jemal A, Siegel R, Ward E, Hao Y, Xu J, et al. (2009) Cancer statistics, 2009. *CA Cancer J Clin* 59: 225–249.
- Langdon WY, Hyland CD, Grumont RJ, Morse HC 3rd (1989) The c-cbl proto-oncogene is preferentially expressed in thymus and testis tissue and encodes a nuclear protein. *J Virol* 63: 5420–5424.
- Swaminathan G, Tsygankov AY (2006) The Cbl family proteins: ring leaders in regulation of cell signaling. *J Cell Physiol* 209: 21–43.
- Nau MM, Lipkowitz S (2003) Comparative genomic organization of the cbl genes. *Gene* 308: 103–113.
- Kozlov G, Peschard P, Zimmerman B, Lin T, Moldoveanu T, et al. (2007) Structural basis for UBA-mediated dimerization of c-Cbl ubiquitin ligase. *J Biol Chem* 282: 27547–27555.
- Waterman H, Levkowitz G, Alroy I, Yarden Y (1999) The RING finger of c-Cbl mediates desensitization of the epidermal growth factor receptor. *J Biol Chem* 274: 22151–22154.
- Thien CB, Langdon WY (1997) EGF receptor binding and transformation by v-cbl is ablated by the introduction of a loss-of-function mutation from the *Caenorhabditis elegans* sli-1 gene. *Oncogene* 14: 2239–2249.
- Miyake S, Mullane-Robinson KP, Lill NL, Douillard P, Band H (1999) Cbl-mediated negative regulation of platelet-derived growth factor receptor-dependent cell proliferation. A critical role for Cbl tyrosine kinase-binding domain. *J Biol Chem* 274: 16619–16628.
- Lill NL, Douillard P, Awwad RA, Ota S, Lupher ML Jr, et al. (2000) The evolutionarily conserved N-terminal region of Cbl is sufficient to enhance down-regulation of the epidermal growth factor receptor. *J Biol Chem* 275: 367–377.
- Meng W, Sawasdikosol S, Burakoff SJ, Eck MJ (1999) Structure of the amino-terminal domain of Cbl complexed to its binding site on ZAP-70 kinase. *Nature* 398: 84–90.
- Peschard P, Fournier TM, Lamorte L, Naujokas MA, Band H, et al. (2001) Mutation of the c-Cbl TKB domain binding site on the Met receptor tyrosine kinase converts it into a transforming protein. *Mol Cell* 8: 995–1004.
- Zheng N, Wang P, Jeffrey PD, Pavletich NP (2000) Structure of a c-Cbl-UbcH7 complex: RING domain function in ubiquitin-protein ligases. *Cell* 102: 533–539.
- Fukazawa T, Miyake S, Band V, Band H (1996) Tyrosine phosphorylation of Cbl upon epidermal growth factor (EGF) stimulation and its association with EGF receptor and downstream signaling proteins. *J Biol Chem* 271: 14554–14559.
- Meisner H, Czech MP (1995) Coupling of the proto-oncogene product c-Cbl to the epidermal growth factor receptor. *J Biol Chem* 270: 25332–25335.
- Ettenberg SA, Keane MM, Nau MM, Frankel M, Wang LM, et al. (1999) cbl-b inhibits epidermal growth factor receptor signaling. *Oncogene* 18: 1855–1866.
- Bao J, Alroy I, Waterman H, Schejter ED, Brodie C, et al. (2000) Threonine phosphorylation diverts internalized epidermal growth factor receptors from a degradative pathway to the recycling endosome. *J Biol Chem* 275: 26178–26186.
- Burke P, Schooler K, Wiley HS (2001) Regulation of epidermal growth factor receptor signaling by endocytosis and intracellular trafficking. *Mol Biol Cell* 12: 1897–1910.
- Clague MJ, Urbe S (2001) The interface of receptor trafficking and signalling. *J Cell Sci* 114: 3075–3081.
- Shtiegman K, Kochupurakkal BS, Zwang Y, Pines G, Starr A, et al. (2007) Defective ubiquitinylation of EGFR mutants of lung cancer confers prolonged signaling. *Oncogene* 26: 6968–6978.
- Sargin B, Choudhary C, Crosetto N, Schmidt MH, Grundle R, et al. (2007) Flt3-dependent transformation by inactivating c-Cbl mutations in AML. *Blood* 110: 1004–1012.
- Bean J, Brennan C, Shih JY, Riely G, Viale A, et al. (2007) MET amplification occurs with or without T790M mutations in EGFR mutant lung tumors with acquired resistance to gefitinib or erlotinib. *Proc Natl Acad Sci U S A* 104: 20932–20937.
- Engelman JA, Zejnullahu K, Mitsudomi T, Song Y, Hyland C, et al. (2007) MET amplification leads to gefitinib resistance in lung cancer by activating ERBB3 signaling. *Science* 316: 1039–1043.
- Caligiuri MA, Briesewitz R, Yu J, Wang L, Wei M, et al. (2007) Novel c-CBL and CBL-b ubiquitin ligase mutations in human acute myeloid leukemia. *Blood* 110: 1022–1024.
- Grand FH, Hidalgo-Curtis CE, Ernst T, Zoi K, Zoi C, et al. (2009) Frequent CBL mutations associated with 11q acquired uniparental disomy in myeloproliferative neoplasms. *Blood* 113: 6182–6192.
- Dunbar AJ, Gondek LP, O'Keefe CL, Makishima H, Rataul MS, et al. (2008) 250K single nucleotide polymorphism array karyotyping identifies acquired uniparental disomy and homozygous mutations, including novel missense substitutions of c-Cbl, in myeloid malignancies. *Cancer Res* 68: 10349–10357.
- Sanada M, Suzuki T, Shih LY, Otsu M, Kato M, et al. (2009) Gain-of-function of mutated C-CBL tumour suppressor in myeloid neoplasms. *Nature* 460: 904–908.
- Reindl C, Quentmeier H, Petropoulos K, Greif PA, Benthous T, et al. (2009) CBL exon 8/9 mutants activate the FLT3 pathway and cluster in core binding factor/11q deletion acute myeloid leukemia/myelodysplastic syndrome subtypes. *Clin Cancer Res* 15: 2238–2247.
- Thien CB, Langdon WY (2001) Cbl: many adaptations to regulate protein tyrosine kinases. *Nat Rev Mol Cell Biol* 2: 294–307.
- Reindl C, Quentmeier H, Petropoulos K, Greif PA, Benthous T, et al. (2009) CBL Exon 8/9 Mutants Activate the FLT3 Pathway and Cluster in Core Binding Factor/11q Deletion Acute Myeloid Leukemia/Myelodysplastic Syndrome Subtypes. *Clin Cancer Res* 15: 2238–2247.
- Abidoye O, Murukurthy N, Salgia R (2007) Review of clinic trials: agents targeting c-Met. *Rev Recent Clin Trials* 2: 143–147.
- Krishnaswamy S, Kanteti R, Duke-Cohan JS, Loganathan S, Liu W, et al. (2009) Ethnic differences and functional analysis of MET mutations in lung cancer. *Clin Cancer Res* 15: 5714–5723.
- Herrmann J, Lerman LO, Lerman A (2007) Ubiquitin and ubiquitin-like proteins in protein regulation. *Circ Res* 100: 1276–1291.
- Wang Y, Werz C, Xu D, Chen Z, Li Y, et al. (2008) Drosophila cbl is essential for control of cell death and cell differentiation during eye development. *PLoS One* 3: e1447.
- Hirsch DS, Shen Y, Wu WJ (2006) Growth and motility inhibition of breast cancer cells by epidermal growth factor receptor degradation is correlated with inactivation of Cdc42. *Cancer Res* 66: 3523–3530.
- Rao N, Dodge I, Band H (2002) The Cbl family of ubiquitin ligases: critical negative regulators of tyrosine kinase signaling in the immune system. *J Leukoc Biol* 71: 753–763.
- Naramura M, Kole HK, Hu RJ, Gu H (1998) Altered thymic positive selection and intracellular signals in Cbl-deficient mice. *Proc Natl Acad Sci U S A* 95: 15547–15552.
- Murphy MA, Schnall RG, Venter DJ, Barnett L, Bertoncello I, et al. (1998) Tissue hyperplasia and enhanced T-cell signalling via ZAP-70 in c-Cbl-deficient mice. *Mol Cell Biol* 18: 4872–4882.
- Onozato R, Kosaka T, Kuwano H, Sekido Y, Yatabe Y, et al. (2009) Activation of MET by gene amplification or by splice mutations deleting the juxtamembrane domain in primary resected lung cancers. *J Thorac Oncol* 4: 5–11.
- Ding L, Getz G, Wheeler DA, Mardis ER, McLellan MD, et al. (2008) Somatic mutations affect key pathways in lung adenocarcinoma. *Nature* 455: 1069–1075.
- Tan Y-H, Salgia R, Hsieh-Li H-M, Wang Y-C (2009) Novel Mutations in c-Cbl Ubiquitin Ligase Gene in Taiwanese Lung Cancer. *BioFormosa* 44: 1–10.
- Higgins RS, Lewis C, Warren WH (2003) Lung cancer in African Americans. *Ann Thorac Surg* 76: S1363–1366.

**Author Contributions**

Conceived and designed the experiments: YHCT SK SN YCW RS. Performed the experiments: YHCT SK SN RK SV FYL EEH GC SCK. Analyzed the data: YHCT SK SN KO RH MR SL TK MS EEV YCW RS. Contributed reagents/materials/analysis tools: RS. Wrote the paper: YHCT SK SN SL RS.