


 Cite this: *RSC Adv.*, 2018, 8, 19220

Received 19th April 2018

Accepted 16th May 2018

DOI: 10.1039/c8ra03365j

[rsc.li/rsc-advances](http://rsc.li/rsc-advances)

## Phospholipid-mediated exfoliation as a facile preparation method for graphene suspensions†

 Aled T. Williams,<sup>a</sup> Roberto Donno,<sup>id</sup>\*<sup>b</sup> Nicola Tirelli<sup>bc</sup> and Robert A. W. Dryfe<sup>id</sup><sup>a</sup>

This paper deals with simple, inexpensive and ‘green’ methods of production for graphene in colloidal dispersion. Herein, we report on such a method by preparing aqueous graphene dispersions *via* ultrasonic exfoliation in the presence of 1,2-dioleoyl-*sn*-glycero-3-phosphocholine (DOPC). The product predominantly consists of few-layer graphene flakes coated by DOPC with a lateral size of a few tens to hundreds of nm, as confirmed by Raman and X-ray photoelectron spectroscopies, thermogravimetric analysis (TGA), dynamic light scattering (DLS) and atomic force microscopy (AFM). The novelty of this method lies in its dependence on a typical soft matter property: the fluidity of the hydrophobic chains. Stiffer phospholipids such as 1,2-dipalmitoyl-*sn*-glycero-3-phosphocholine (DPPC, which possesses two palmitoyl chains) or 2-oleoyl-1-palmitoyl-*sn*-glycero-3-phosphocholine (POPC, one palmitoyl, one oleyl chain) are ineffective at dispersing graphene; however, in the presence of cholesterol these phospholipids also become effective mediators. The phospholipid coating renders the flakes compatible with biological environments.

## Introduction

Stable graphene colloidal dispersions are versatile materials. They can find application in their own morphology, *e.g.* as imaging agents or drug carriers,<sup>1</sup> or may be used as precursors to other graphene-based materials, *e.g.* nano-structured films that can be exploited for various applications.<sup>2,3</sup> Much attention has been devoted to their preparative processes:<sup>4</sup> currently liquid-phase exfoliation<sup>5–7</sup> is probably the most attractive and scalable process and, under optimal conditions yields materials ranging from monolayer to few-layer ( $n \leq 5$ ) graphene (FLG).<sup>5,8–10</sup> Exfoliation requires both the provision of energy, *e.g.* as ultrasound, and molecules that minimize the surface energy of the dispersed colloids.<sup>9</sup> Hernandez *et al.* reported that solvents provide optimal exfoliation if their surface tension = 40–50 mJ m<sup>-2</sup>,<sup>9</sup> as is the case for *N*-methyl-2-pyrrolidone (NMP) and other polar aprotic solvents; in particular, NMP allows for graphene concentrations of up to 1.2 mg mL<sup>-1</sup>. Both for ease of removal (lower boiling point) and environmental considerations, water would be a better exfoliation medium, provided that its high

surface tension (72.75 mJ m<sup>-2</sup> at 20 °C)<sup>11</sup> is reduced by surfactants<sup>2,5,12</sup> or polymers.<sup>13,14</sup>

Herein we demonstrate that phospholipids are effective agents for producing graphene by aqueous exfoliation; we note that phospholipids have been previously used in a chloroform-based exfoliation method<sup>15</sup> and a multi-step aqueous exfoliation method,<sup>16</sup> but we are unaware of phospholipids being used in direct single-step waterborne exfoliation of graphite. In terms of molecular variables, it is known that an appropriate phospholipid curvature (arising from the interfacial mismatch between the hydrophilic and hydrophobic portions of the molecule) is critical for their adaptation to a curved carbon surface (nanotubes).<sup>17</sup> Here, we show that another molecular parameter, specifically the fluidity of the hydrophobic environment, is critical for graphene exfoliation.

## Experimental methods

### Materials

All starting materials and solvents were used as received. The primary graphite powder (grade 2369) used was obtained from Graphexel Ltd (UK). 1,2-dioleoyl-*sn*-glycero-3-phosphocholine (DOPC) ( $\geq 99\%$ ), 1,2-dipalmitoyl-*sn*-glycero-3-phosphocholine (DPPC) ( $\geq 99\%$ ), 2-oleoyl-1-palmitoyl-*sn*-glycero-3-phosphocholine (POPC) ( $\geq 95.5\%$ ) and cholesterol ( $\geq 99\%$ ) were purchased from Sigma-Aldrich and kept refrigerated. Sodium phosphate dibasic (Na<sub>2</sub>HPO<sub>4</sub>) (BioXtra,  $\geq 99\%$ ) was purchased from Sigma-Aldrich and potassium dihydrogen orthophosphate (KH<sub>2</sub>PO<sub>4</sub>) ( $\geq 99\%$ ) from Fisher Scientific.

<sup>a</sup>School of Chemistry, University of Manchester, Oxford Road, Manchester, M13 9PL, UK

<sup>b</sup>Laboratory of Polymers and Biomaterials, Fondazione Istituto Italiano di Tecnologia, Via Morego 30, Genoa, Italy. E-mail: roberto.donno@iit.it

<sup>c</sup>NorthWest Centre for Advanced Drug Delivery, University of Manchester, Oxford Road, Manchester, M13 9PL, UK

† Electronic supplementary information (ESI) available. See DOI: 10.1039/c8ra03365j



### UV-vis spectroscopy

UV-visible spectra were taken on a USB2000+UV-VIS fibre optic spectrometer using a DH-2000-BAL deuterium-halogen light source (Ocean Optics).

### Dynamic light scattering (DLS) and zeta-potential measurements

A Malvern Zetasizer Nano ZS was operated in backscatter mode ( $173^\circ$ ), using a 633 nm HeNe laser. The graphene/DOPC dispersions were diluted in ultra-pure water ( $c_G = 3 \mu\text{g mL}^{-1}$ ) and equilibrated by the instrument to  $25^\circ\text{C}$  for each measurement. The zeta potential was calculated by Malvern software using the Smoluchowski model.

### X-ray photoelectron spectroscopy (XPS)

Spectra were measured using an AXIS Nova (Kratos Analytical, UK) with a monochromatic  $\text{AlK}\alpha$  source operated at 225 W (15 kV and 15 mA). Survey and high resolution spectra were collected at pass energies of 160 eV (average of 3 sweeps) and 20 eV (average of 10 sweeps) respectively. Analysis was performed using CasaXPS software, utilizing Shirley background subtraction and the appropriate relative sensitivity factors. XPS samples were prepared as drop-cast graphene dispersions on Si/SiO<sub>2</sub> substrates (as described for the AFM measurements).

### Thermogravimetric analysis (TGA)

A 15 mL aliquot of the supernatants was freeze dried in a 50 mL Falcon tube (Fisherbrand, polypropylene) using a Genevac evaporator (EZ-2 series); the resulting solid was transferred to a cellulose filter, repeatedly washed with ultrapure water and allowed to dry in a vacuum oven at  $120^\circ\text{C}$  for 24 h. Reference graphene samples were produced according to a literature procedure<sup>9</sup> *via* exfoliation in NMP, with the suspension twice centrifuged at 6000 rpm for 30 min and then filtered through filter paper, finally drying the dispersed material in a vacuum oven at  $120^\circ\text{C}$  for 24 h. TGA measurements were performed on a Q500 instrument (TA Instruments, USA) under a nitrogen atmosphere and at  $10^\circ\text{C min}^{-1}$  using a temperature range of 20–1000  $^\circ\text{C}$ .

### Raman spectroscopy

Samples were prepared by drop casting 100  $\mu\text{L}$  of fresh dispersions ( $c_G = 30 \mu\text{g mL}^{-1}$ ) onto 1  $\text{cm}^2$  Si/SiO<sub>2</sub> substrates (pre-cleaned by sonication in ethanol and acetone for 10 min), followed by drying at  $70^\circ\text{C}$  for approximately 10 min. Spectra were taken on a Renishaw inVia system using 532 nm (2.33 eV) excitation energy (laser power of 1.8 mW) and a 100 $\times$  objective (numerical aperture of 0.9), giving a spot size of approximately of 1  $\mu\text{m}$ . This system uses a high-resolution grating of 1800  $\text{g mm}^{-1}$ , giving a spectral resolution  $\leq 1 \text{ cm}^{-1}$ . Spectra represent three accumulations at 5 s of exposure time.

### Atomic force microscopy (AFM)

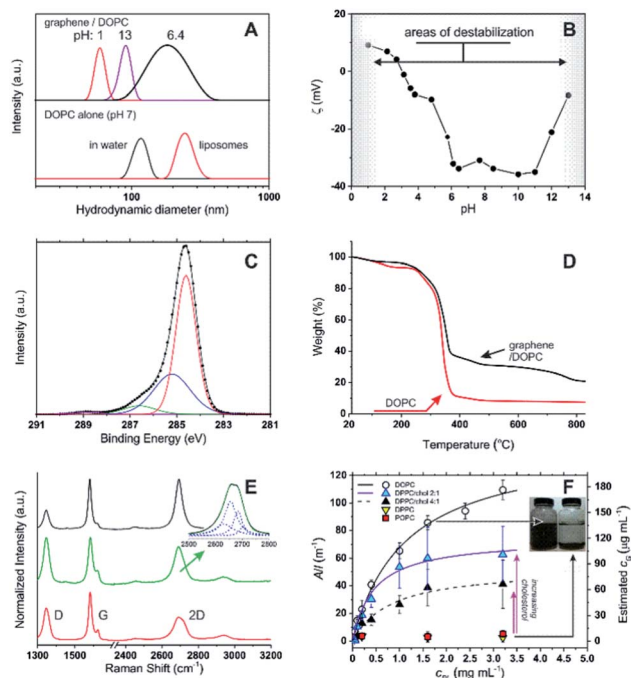
Samples were prepared by drop casting 100  $\mu\text{L}$  of fresh dispersion ( $c_G = 3 \mu\text{g mL}^{-1}$ ) onto 1  $\text{cm}^2$  clean mica substrates and allowed to dry overnight. AFM images were acquired in tapping mode at a scan rate of 1 Hz using a Molecular Force Probe 3D AFM (MFP-3D, Oxford Instrument Asylum Research, Buckinghamshire, UK). An OTESPA cantilever (Bruker, Camarillo, CA) was used with a nominal spring constant of 42  $\text{N m}^{-1}$  and a tip radius of 7 nm. All images were analysed (height sections and distributions) with Igor-pro (Asylum Research AFM software, version 13, Wavemetrics). In order to obtain the height and CE diameter (the diameter of a circle having the same area of the segmented object) distributions, images were first segmented using the particle analysis routine offered by the Igor-pro software, then generating the height distributions and analysing/plotting it through Origin 8.5 (OriginLab Corporation).

### Preparation of graphene dispersions

In a typical experiment, phospholipids were dispersed in 10 mL of ultra-pure water (18 M $\Omega$  cm, Milli-Q Direct 8, Millipore, USA) at a concentration of 0.2  $\text{mg mL}^{-1}$  in a 20 mL glass vial. Graphite powder was sieved before use through a 500  $\mu\text{m}$  pore-size mesh in order to remove large particles, and subsequently added to the phospholipid/water solution at a concentration of 5  $\text{mg mL}^{-1}$ . The mixture was then sonicated in an ultrasound bath for 12 hours (Elmasonic P, Elma, Germany. Frequency = 37 kHz, power equivalent = 40%, true power  $\approx 34 \text{ W}$ ) at a constant bath temperature of  $20^\circ\text{C}$ , after which the resulting dispersion was left standing for 24 hours to allow for the sedimentation of large aggregates. The supernatant was subsequently removed and centrifuged at 6000 rpm for 30 min, with the process being repeated once more to produce a light grey/green-coloured dispersion. The amount of dispersed material was calculated by carefully separating the supernatants from the sediment after centrifugation. The volume of dispersion was measured and the undispersed mass was dried in a vacuum oven (Gallenkamp, UK) at  $120^\circ\text{C}$ .

## Results and discussion

Using 1,2-dioleoyl-*sn*-glycero-3-phosphocholine (DOPC) in water, sonication of graphite produced stable, dark suspensions that became clearer and grey/green in colour after removing large aggregates *via* centrifugation. We have estimated an extinction coefficient lower than for other surfactant-stabilized aqueous graphene dispersions:  $\epsilon_{660} = 6.2 \text{ mL mg}^{-1} \text{ cm}^{-1}$  (see Fig. S1 in ESI<sup>†</sup>) *vs.* 13.90  $\text{mL mg}^{-1} \text{ cm}^{-1}$  with sodium dodecylbenzene sulfonate (SDBS).<sup>5</sup> Dynamic light scattering (DLS) seemed to exclude the presence of large amounts of the parent DOPC colloids (compare the black curves in Fig. 1A top and bottom), while the objects present in the graphene dispersion showed a considerably broader size distribution (Fig. 1A) peaked at 190 nm; due to the approximations in the technique (*e.g.* assumption of spherical form), this value should be simply taken as an indication of a size comprised between tens and



**Fig. 1** (A) Top: size distribution (DLS) for DOPC–graphene dispersions in deionized water ( $\text{pH} \approx 7$ ) and after adjusting the pH to 1 and 13 via addition of concentrated HCl and NaOH, respectively. Bottom: size distribution of DOPC aggregates in water prior to the addition of graphite (black curve); DOPC liposomes (red curve) are shown for comparison. (B)  $\zeta$  potential of DOPC/graphene suspensions ( $c_G = 3 \mu\text{g mL}^{-1}$ ) as a function of pH in deionized water; the negative values at neutral pH are comparable to those obtained for DOPC in its initial aggregates in water ( $-37 \text{ mV}$ ) or in liposomes ( $-41 \text{ mV}$ ). (C) Carbon 1s core-level XPS spectrum of a DOPC/graphene dispersion drop cast onto a Si/SiO<sub>2</sub> substrate. In the fitting, the red line corresponds to the C–C sp<sup>2</sup> peak, the blue to the C–C sp<sup>3</sup> peak, the green to C–O and C–N peaks, the purple to the O–C=O peak. (D) Thermogravimetric analysis of DOPC/graphene dispersions (black) and of pure DOPC (red). (E) Raman spectra of DOPC/graphene flakes isolated on Si/SiO<sub>2</sub> substrates. Top (black): attributed to monolayer. Middle (green): attributed to bilayer, with the inset showing the fitting of the 2D band to a Lorentzian model.<sup>8</sup> Bottom (red): attributed to flakes with layer >2 but <6, i.e. few-layer graphene. (F) Dependency of the optical density of dispersed graphene samples on phospholipid concentration. The concentration of dispersed graphene (estimated from  $A_{660}$ ) can be fitted as a hyperbolic (Langmuir) function of the phospholipid concentration. DPPC and POPC are unable to disperse graphene to any significant extent, unless cholesterol is used; in this case, the asymptotic amount of dispersed graphene increases with cholesterol concentration. The flakes dispersed with DPPC/cholesterol are similar to those obtained with DOPC; e.g. with a 4 : 1 DOPC/cholesterol molar ratio one obtains a Z-average size of 239 nm and a  $\zeta$  potential of  $-22 \text{ mV}$ .

hundreds of nm. Hereafter, we will refer to these colloids as graphene flakes.<sup>18</sup>

The DOPC/graphene dispersions were characterized by a negative  $\zeta$  potential at neutral pH ( $-34 \text{ mV}$ , Fig. 1B). The rather large value of the  $\zeta$  potential suggests that the dispersions have long-term stability and indeed their optical density decreased very moderately with time (ca. 11, 25 and 43% reduction in  $A_{660}$  respectively after 22, 41 and 56 days). Further

ensuring their stability under biologically relevant conditions, the  $\zeta$  potential remained constant throughout a broad pH window centred on neutrality ( $\text{pH} = 4\text{--}11$ ). We have recorded strong changes only at strongly acidic pH, due to amine protonation and loss of electrostatic stabilization, and at strongly basic pH, most likely due to phospholipid desorption following hydrolysis of the head-groups. Under both conditions graphene precipitated, leaving behind colloids with too small an average size to be considered as being dispersed flakes.

The presence of both DOPC and graphene in the dispersion was qualitatively and quantitatively confirmed through X-ray photoelectron spectroscopy (XPS) and thermogravimetric analysis (TGA). In XPS (Fig. 1C), the C1s spectrum confirmed the presence of DOPC through the peaks at 285.2 (C–C sp<sup>3</sup>), 286.6 (C–O and C–N) and 288.8 eV (O–C=O), which accompany the peak at 284.6 eV (C–C sp<sup>2</sup>); as it is to be expected for a graphene-based material, the latter is the largest peak in this area of the spectrum (while it is small in the predominantly aliphatic DOPC). The binding energies of C–N and C–O are too similar to allow an effective differentiation into separate peaks, but their combination had a 4 : 1 ratio with respect to the O–C=O peak, as expected from the structure of DOPC. Phosphorous was detected at approximately the same percentage atomic concentration as nitrogen, with the P2p<sub>3/2</sub> and P2p<sub>1/2</sub> peaks at 133.1 eV and 133.9 eV respectively (constrained at a peak separation of 0.87 eV and 2 : 1 area ratio) and the N1s peak at 401.9 eV.

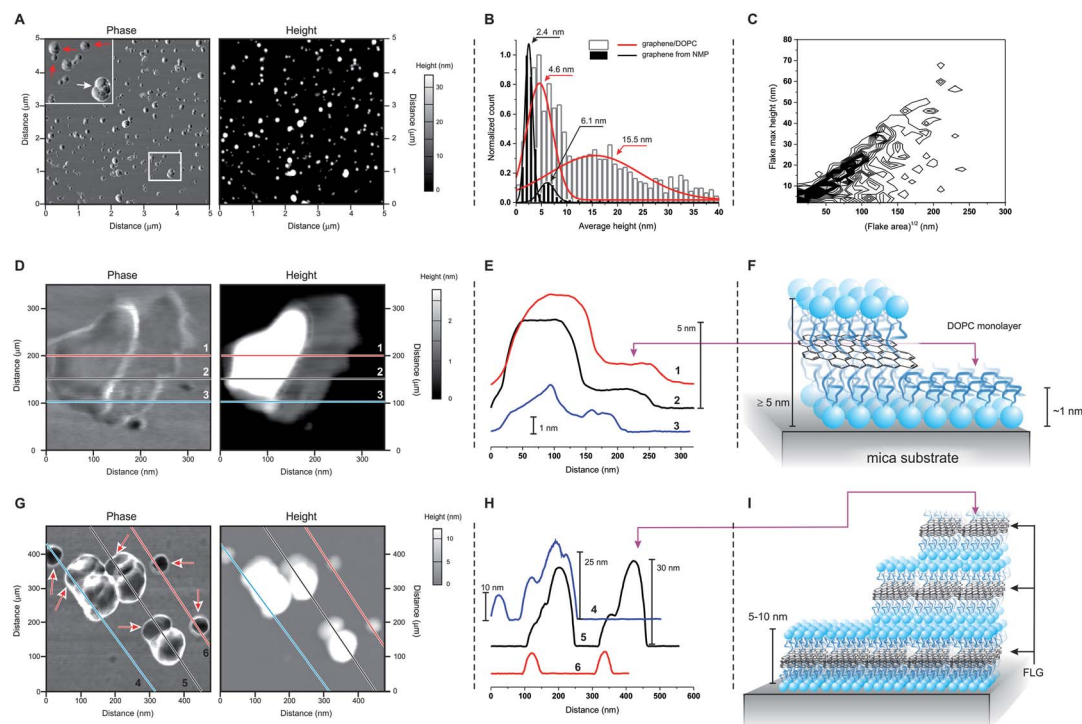
Thermogravimetric analysis (TGA) showed that the degradation pattern of freeze-dried dispersions presented features typical of DOPC but also of graphene: the degradation step of DOPC is clearly seen at around 300 °C (compare black and red curves in Fig. 1D). However, the amount of residual material is considerably higher than for pure DOPC and shows a weight loss at temperatures > 500 °C that is typical of graphene thermal degradation<sup>19</sup> (see also ESI, Fig. S2†). From the extent of the DOPC-related weight loss we estimate that the graphene corresponded to 24% wt of the dispersed material. It is worth noting that FT-IR analysis did not provide any significant information: DOPC peaks were only marginally affected by the presence of graphene, while graphene does not present any diagnostic band.

We have further confirmed that, for a given exposure to ultrasound, the amount of dispersed graphene depends on the concentration of phospholipid,  $c_{\text{PL}}$ . For example, a graphene concentration  $c_G = 0.03$  or  $0.18 \text{ mg mL}^{-1}$  can be obtained respectively with  $c_{\text{PL}} = 0.2$  and  $3.2 \text{ mg mL}^{-1}$  (Fig. 1F). The dependency, however, is non-linear and could be easily fitted with asymptotic (hyperbolic) models, for example:

$$\frac{c_G}{c_{\text{Gsat}}} = \frac{\alpha c_{\text{PL}}}{1 + \alpha c_{\text{PL}}}$$

where  $c_{\text{Gsat}}$  is the maximum amount of dispersible graphene (estimated at  $0.22 \text{ mg mL}^{-1}$  and most likely related to the effectiveness of the ultrasound treatment) and  $\alpha$  is a parameter expressing the efficacy of DOPC in dispersing graphene, which in our case corresponded to  $1.02 \text{ mL mg}^{-1}$ . Since the relation between the amounts of dispersed graphene and that of DOPC





**Fig. 2** (A) Phase and height images obtained in tapping mode AFM for a sample of DOPC-coated graphene. The top left inset in the phase image shows flatter, smaller and more homogeneous objects (red arrows) co-dispersed with larger and heterogeneous ones (white arrow). (B) Size distributions obtained from AFM height images of DOPC/graphene and of graphene exfoliated in NMP; the latter is FLG<sup>10</sup> with a number of layers (4–5) similar to graphene/DOPC (E). The graph also presents Gaussian fittings for an easier view of the distribution. (C) Frequency plot of the maximum height vs. the square root of the area (used as a characteristic lateral dimension) for the materials obtained *via* deposition of DOPC/graphene on mica from dispersions on deionized water (data for 1240 flakes; the frequency data are calculated with a binning of 2 nm for height and 5 nm for lateral size, and normalized to show the highest frequency in black and lowest frequency in white). (D)–(F) Phase and height images: (D) for a ‘flat’ flake showing the presence of a  $\sim 1$  nm-thick layer on the right hand side of the flake; the height profiles corresponding to the lines 1, 2 and 3 are reported in (E) and clearly show the presence of two homogeneous levels, which are ascribed to a DOPC monolayer and of DOPC-coated graphene, as depicted in (F). (G)–(I) Phase and height images: (G) for a field comprising ‘flat’ flakes and agglomerates; the height profiles corresponding to the lines 4, 5 and 6 are reported in (H) and show that the ‘flat’ flakes have a height comprised between 5 and 10 nm, which is similar to that of the lowest steps in the agglomerates; the latter then typically grows in steps with comparable size, as depicted in (I).

is variable, it could be hypothesized that high DOPC concentrations may allow for the dispersal of ‘difficult’ forms of the material, such as thicker or more defective flakes. It is also noteworthy that in the ‘linear’ part of the hyperbolic curve (low DOPC concentration, where the amount of dispersed graphene is linearly proportional to [DOPC]) the phospholipid probably undergoes a partition equilibrium with the predominance of non-adsorbed form(s). Indeed, if DOPC was assumed to be quantitatively adsorbed, a rough calculation would suggest a high surface density of  $>3.5$  molecules per  $\text{nm}^2$  (see ESI, eqn (1)†), which is about three times higher than in close-packed layers of DOPC.<sup>20,21</sup>

When more rigid phospholipids such as 1,2-dipalmitoyl-*sn*-glycero-3-phosphocholine and 2-oleoyl-1-palmitoyl-*sn*-glycero-3-phosphocholine (DPPC and POPC, with no or one *cis* double bond, respectively) were used instead of DOPC, the exfoliation was successful only in the presence of cholesterol and proportionally to the amount of the latter (Fig. 1F). This behaviour is clearly linked to the fluidity of the phospholipid hydrophobic chains: it is indeed known that DPPC forms rigid structures<sup>22</sup> and cholesterol increases the fluidity of its bilayers by inducing

a gel ( $L_{\beta}$ ) to liquid-ordered ( $L_0$ ) phase transition.<sup>23–25</sup> It is noteworthy that the cholesterol/DPPC mixtures differed from DOPC in the overall amount of dispersible graphene (above all at high phospholipid concentrations), but not significantly in the early ‘linear’ phase; it would seem logical to hypothesize that all mixtures behaved similarly (see ESI, Fig. S3†) from a mechanistic point of view, although characterized by a different dispersing power.

Finally, by using Raman spectroscopy and atomic force microscopy (AFM) we have identified the material as predominantly composed by DOPC-coated few-layer graphene. Raman spectroscopy measurements on dried graphene dispersions showed that the majority of spectra displayed the major graphitic peaks (Fig. 1E, bottom/red) at 1347 (D band), 1582 (G band) and  $2695\text{ cm}^{-1}$  (2D band), with the shape of the 2D bands being quite distinct from that of the parent graphite<sup>8</sup> (see ESI, Fig. S4†). The most frequently observed spectra (73% of all the spectra taken; Fig. 1E, bottom/red) were representative of flakes  $>2$ , with the lower intensity of the 2D band *vs.* G ( $I_{2D}/I_G = 0.50$ ) and the broad shape of the 2D band (FWHM =  $72\text{ cm}^{-1}$ ) suggesting the presence of few-layer structures<sup>8,26</sup> (probably varying

within the range of 3–5 layers); a distribution in the number of layers is expected with liquid-phase exfoliation of graphite.<sup>29</sup> Less frequently observed (20% of all spectra taken) were those characteristic of bilayer graphene<sup>26</sup> (Fig. 1E, middle/green), with  $I_{2D}/I_G = 0.76$  and the 2D band (FWHM =  $64\text{ cm}^{-1}$ ) fitting to four Lorentzian functions (Fig. 1E inset) peaked at 2669 (FWHM =  $46\text{ cm}^{-1}$ ), 2688 (FWHM =  $33\text{ cm}^{-1}$ ), 2706 (FWHM =  $30\text{ cm}^{-1}$ ) and  $2726\text{ cm}^{-1}$  (FWHM =  $32\text{ cm}^{-1}$ ). However, in most samples it was possible to isolate individual flakes that displayed 2D peaks at  $2694\text{ cm}^{-1}$  and  $I_{2D}/I_G = 0.99$ , which suggest the presence of monolayer flakes;<sup>26</sup> the 2D peaks in these spectra were best fitted by a single Lorentzian function (FWHM =  $42\text{ cm}^{-1}$ ; Fig. 1E, top/black spectrum), with the fitting of more than three Lorentzian functions being difficult to accommodate. Due to the small size of the exfoliated flakes (lateral size of a few tens to hundreds of nm), and coupled with the fact that the laser spot size used for the Raman measurements was approximately  $1\text{ }\mu\text{m}$ , the D and 2D band intensities will be strongly influenced by both structural defects and the edges of the graphene flakes,<sup>27</sup> with one of the expected results being the intensity reduction and broadening of the 2D band.<sup>28</sup>

Atomic force microscopy (AFM) showed two groups of differently sized structures: flatter 5–10 nm thick flakes (red arrows in Fig. 2A) and larger,  $\gg 10$  nm-tall aggregates (white arrow in Fig. 2A; white bars and red curve in Fig. 2B). We can exclude the presence of uncoated FLG, which has a different size distribution (black bars and curves in Fig. 2B) even when composed of a similar number of layers.<sup>10</sup> On the other hand, we cannot exclude some structures that are entirely composed of DOPC, for example: ‘steps’ of approximately 1 nm are occasionally observed (Fig. 2D and E), which by analogy to the structurally similar dioleoylphosphatidylethanolamine (1.2–1.3 nm monolayers<sup>29</sup>) can be interpreted as DOPC monolayers. Furthermore, the variability in the thickness of supported DOPC bilayers (recorded between 4 (ref. 30 and 31) and 5 nm (ref. 32 and 33)) is comparable to the reported thickness of  $\sim 0.40\text{ nm}$ /graphene layer,<sup>34,35</sup> thus a DOPC bilayer can hardly be distinguished from a DOPC-coated graphene mono- or bilayer. However, the bulk of the 5–10 nm size distribution can only correspond to DOPC-coated FLG. Finally, we noticed that the larger and irregular objects often showed ‘steps’ with a height comparable to the thickness of the flatter flakes (Fig. 2G and H). It therefore seems reasonable to hypothesize that stacking of the latter during deposition onto the mica substrate may give rise to the large aggregates. It is peculiar that these aggregates appear to maintain a comparable aspect ratio independent of their actual dimensions (Fig. 2C), which is possibly a result of a specific balance of interactions between flake borders and flat surfaces during the deposition of the flakes from water dispersions.

## Conclusions

In summary, this single-step method produces aqueous dispersions of phospholipid-coated graphene through the exfoliation of graphite in water. The critical step of this procedure appears to be the fluidity of the phospholipid aliphatic

chains. We believe that the benign nature of the phospholipid coating can be exploited for applications involving graphene in contact with biological environments.

## Conflicts of interest

There are no conflicts to declare.

## Acknowledgements

We thank Dr Erwin Hohn and Dr Enrique Lallana for assistance with DLS and zeta potential measurements, Dr Mark Bissett for XPS measurements and Ms Tania Campos Hernández for useful discussions. The authors gratefully acknowledge the Faculty of Medical and Human Sciences of The University of Manchester for funding and the Bio-AFM facility for technical support.

## Notes and references

- 1 D. Bitounis, H. Ali-Boucetta, B. H. Hong, D.-H. Min and K. Kostarelos, *Adv. Mater.*, 2013, **25**, 2258–2268.
- 2 U. Khan, A. O'Neill, M. Lotya, S. De and J. N. Coleman, *Small*, 2010, **6**, 864–871.
- 3 T. C. Hernandez, A. C. F. Blanco, A. T. Williams, M. Velicky, H. V. Patten, A. Colina and R. A. W. Dryfe, *Electroanalysis*, 2015, **27**, 1026–1034.
- 4 D. Li, M. B. Muller, S. Gilje, R. B. Kaner and G. G. Wallace, *Nat. Nanotechnol.*, 2008, **3**, 101–105.
- 5 M. Lotya, Y. Hernandez, P. J. King, R. J. Smith, V. Nicolosi, L. S. Karlsson, F. M. Blighe, S. De, Z. M. Wang, I. T. McGovern, G. S. Duesberg and J. N. Coleman, *J. Am. Chem. Soc.*, 2009, **131**, 3611–3620.
- 6 J. S. Y. Chia, M. T. T. Tan, P. S. Khiew, J. K. Chin, H. Lee, D. C. S. Bien and C. W. Siong, *Chem. Eng. J.*, 2014, **249**, 270–278.
- 7 J. S. Y. Chia, M. T. T. Tan, P. S. Khiew, J. K. Chin and C. W. Siong, *Sci. Adv. Mater.*, 2016, **8**, 1177–1186.
- 8 A. C. Ferrari, J. C. Meyer, V. Scardaci, C. Casiraghi, M. Lazzeri, F. Mauri, S. Piscanec, D. Jiang, K. S. Novoselov, S. Roth and A. K. Geim, *Phys. Rev. Lett.*, 2006, **97**, 187401.
- 9 Y. Hernandez, V. Nicolosi, M. Lotya, F. M. Blighe, Z. Y. Sun, S. De, I. T. McGovern, B. Holland, M. Byrne, Y. K. Gun'ko, J. J. Boland, P. Niraj, G. Duesberg, S. Krishnamurthy, R. Goodhue, J. Hutchison, V. Scardaci, A. C. Ferrari and J. N. Coleman, *Nat. Nanotechnol.*, 2008, **3**, 563–568.
- 10 A. J. Cooper, N. R. Wilson, I. A. Kinloch and R. A. W. Dryfe, *Carbon*, 2014, **66**, 340–350.
- 11 N. B. Vargaftik, B. N. Volkov and L. D. Voljak, *J. Phys. Chem. Ref. Data*, 1983, **12**, 817–820.
- 12 S. K. Misra, P. Kondaiah, S. Bhattacharya and C. N. R. Rao, *Small*, 2012, **8**, 131–143.
- 13 A. B. Bourlinos, V. Georgakilas, R. Zboril, T. A. Steriotis, A. K. Stubos and C. Trapalis, *Solid State Commun.*, 2009, **149**, 2172–2176.
- 14 M. Fang, K. G. Wang, H. B. Lu, Y. L. Yang and S. Nutt, *J. Mater. Chem.*, 2009, **19**, 7098–7105.

- 15 M. Pykal, K. Safarova, K. M. Siskova, P. Jurecka, A. B. Bourlinos, R. Zboril and M. Otyepka, *J. Phys. Chem. C*, 2013, **117**, 11800–11803.
- 16 R. Zappacosta, M. Di Giulio, V. Ettorre, D. Bosco, C. Hadad, G. Siani, S. Di Bartolomeo, A. Cataldi, L. Cellini and A. Fontana, *J. Mater. Chem. B*, 2015, **3**, 6520–6527.
- 17 J. Maatta, S. Vierros and M. Sammalkorpi, *J. Phys. Chem. B*, 2015, **119**, 4020–4032.
- 18 M. Lotya, A. Rakovich, J. F. Donegan and J. N. Coleman, *Nanotechnology*, 2013, **24**, 265703.
- 19 V. Chabot, B. Kim, B. Sloper, C. Tzoganakis and A. P. Yu, *Sci. Rep.*, 2013, **3**, 1378.
- 20 M. Alwarawrah, J. A. Dai and J. Y. Huang, *J. Phys. Chem. B*, 2010, **114**, 7516–7523.
- 21 N. Kucerka, S. Tristram-Nagle and J. F. Nagle, *J. Membr. Biol.*, 2005, **208**, 193–202.
- 22 D. O. Shah and J. H. Schulman, *J. Lipid Res.*, 1967, **8**, 215–226.
- 23 T. T. Mills, J. Y. Huang, G. W. Feigenson and J. F. Nagle, *Gen. Physiol. Biophys.*, 2009, **28**, 126–139.
- 24 J. H. Ipsen, G. Karlstrom, O. G. Mouritsen, H. Wennerstrom and M. J. Zuckermann, *Biochim. Biophys. Acta*, 1987, **905**, 162–172.
- 25 M. R. Vist and J. H. Davis, *Biochemistry*, 1990, **29**, 451–464.
- 26 L. M. Malard, M. A. Pimenta, G. Dresselhaus and M. S. Dresselhaus, *Phys. Rep.*, 2009, **473**, 51–87.
- 27 S. Gayathri, P. Jayabal, M. Kottaisamy and V. Ramakrishnan, *AIP Adv.*, 2014, **4**, 027116.
- 28 L. G. Cancado, A. Jorio, E. H. M. Ferreira, F. Stavale, C. A. Achete, R. B. Capaz, M. V. O. Moutinho, A. Lombardo, T. S. Kulmala and A. C. Ferrari, *Nano Lett.*, 2011, **11**, 3190–3196.
- 29 Y. F. Dufrene, W. R. Barger, J. B. D. Green and G. U. Lee, *Langmuir*, 1997, **13**, 4779–4784.
- 30 M. Hirtz, A. Oikonomou, T. Georgiou, H. Fuchs and A. Vijayaraghavan, *Nat. Commun.*, 2013, **4**, 2591.
- 31 S. T. Wang, M. Fukuto and L. Yang, *Phys. Rev. E*, 2008, **77**, 031909.
- 32 A. Dols-Perez, L. Fumagalli and G. Gomila, *Colloids Surf., B*, 2014, **116**, 295–302.
- 33 Z. V. Leonenko, E. Finot, H. Ma, T. E. S. Dahms and D. T. Cramb, *Biophys. J.*, 2004, **86**, 3783–3793.
- 34 Y. K. Koh, M.-H. Bae, D. G. Cahill and E. Pop, *ACS Nano*, 2011, **5**, 269–274.
- 35 P. Nemes-Incze, Z. Osvath, K. Kamaras and L. P. Biro, *Carbon*, 2008, **46**, 1435–1442.