



Supporting Information

for *Adv. Sci.*, DOI: 10.1002/advs.201900195

**Macrophages-Triggered Sequential Remodeling of
Endothelium-Interstitial Matrix to Form Pre-Metastatic Niche
in Microfluidic Tumor Microenvironment**

*Hyunho Kim, Hyewon Chung, Jaehoon Kim, Dong-Hee Choi,
Yoojin Shin, Yong Guk Kang, Beop-Min Kim, Sang-Uk Seo,
Seok Chung,* and Seung Hyeok Seok**

Supporting information

Macrophages-triggered sequential remodeling of endothelium-interstitial matrix to form pre-metastatic niche in microfluidic tumor microenvironment

Hyunho Kim,^{1†} Hyewon Chung,^{2†} Jaehoon Kim,¹ Dong-hee Choi,¹ Yoojin Shin,³ Yong Guk Kang,⁴ Beop-Min Kim,⁴ Sang-Uk Seo,⁵ Seok Chung,^{1,6*} Seung Hyeok Seok^{2*}

[†]These authors contributed equally to this work

¹School of Mechanical Engineering, College of Engineering, Korea University, Seoul, 02841, Republic of Korea

²Department of Microbiology and Immunology, and Institute of Endemic Disease, College of Medicine, Seoul National University, Seoul, 03080, Republic of Korea

³Department of Mechanical Engineering, Massachusetts Institute of Technology, Cambridge, MA, 02139, USA

⁴Department of Bio-Convergence Engineering, College of Health Science, Korea University

⁵Department of Biomedical Sciences, College of Medicine, Seoul National University

⁶KU-KIST Graduate School of Converging Science and Technology, Korea University

* Correspondence

Seok (Sid) Chung, PhD

E-mail: sidchung@korea.ac.kr

Seung Hyeok Seok, DVM, PhD

E-mail: lamseok@snu.ac.kr

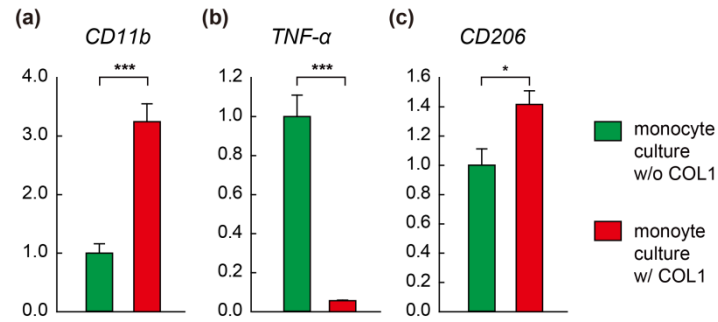


Figure S1. Characterization of monocytes within type 1 collagen hydrogel. a-c) mRNA expression levels of markers for macrophage differentiation (M0), M1 macrophage and M2 macrophage in monocytes under 3D culture embedded in type 1 collagen hydrogel. CD11b a), TNF- α , b) and CD206, c) were used as markers for M0, M1 and M2 macrophage respectively. n = 3 independent experiments. Data represent mean \pm S.E.M. *, p<0.05, ***, p<0.001 by Student's t-test

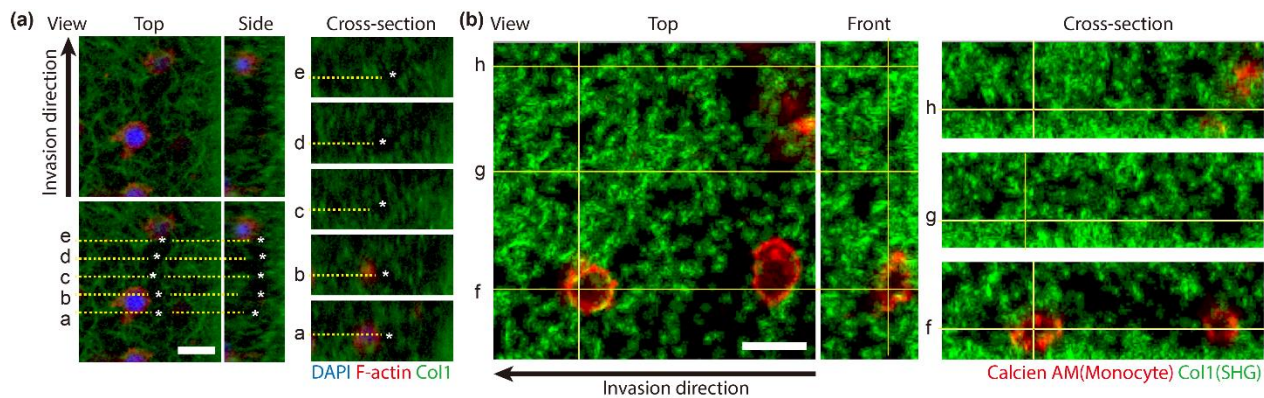


Figure S2. Pre-invaded macrophages induced microtracks in collagen. a) Representative confocal fluorescence images of collagen matrix (green), F-actin (red) and DAPI (nucleus, blue) showing collagen structure in the presence of macrophages. a-e indicate position of cross-section view and each asterisk indicates microtracks within the matrix. Scale bar, 20 μm . b) Representative second-harmonic generation (SHG) microscopy images of collagen matrix. f-h indicate position of cross-section view respectively. Scale bar, 20 μm . Calcein AM (red) and collagen fiber (green).

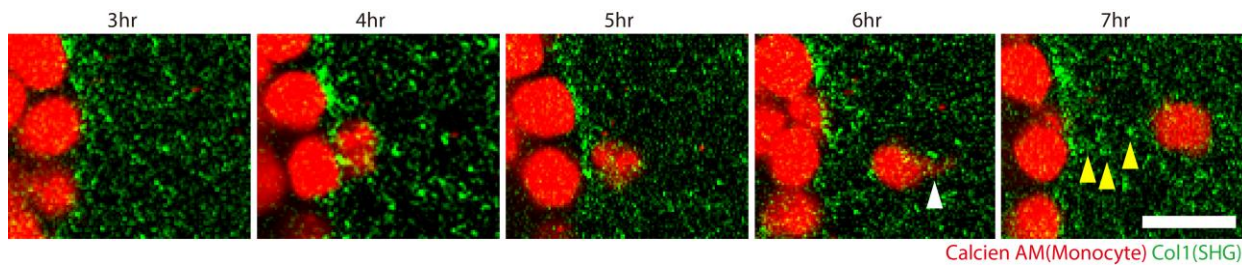


Figure S3. Time-lapse SHG microscopy images of migrating monocytes in the collagen matrix (3-7 h after seeding). White arrow head indicates an invadopodia of monocytes and yellow arrow heads indicate deformation of collagen matrix respectively. Calcein AM (red) and collagen fiber (green). Scale bar, 20 μm .

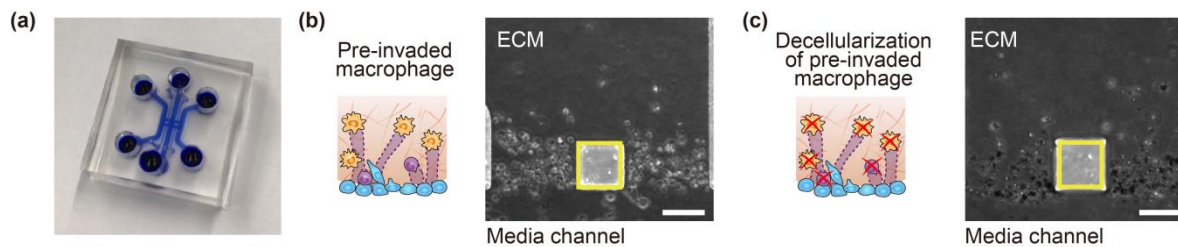


Figure S4. Decellularization of pre-invaded macrophages in microfluidic model. a) To confirm the decellularization with DW, trypan-blue staining was performed on a microfluidic chip. b and c) Illustration of the experiment (left panel) and representative phase images (right panel) of pre-invaded macrophage without (b) or with decellularization process (c). Dead cells were stained with trypan-blue dye. Scale bar, 150 μm .