

Optimal strategies to screen health care workers for COVID-19 in the US: a cost-effectiveness analysis

Sigal Maya (✉ Sigal.Maya@ucsf.edu)

University of California San Francisco

Guntas Padda

University of California San Francisco

Victoria Close

University of Vermont College of Medicine

Trevor Wilson

San Joaquin General Hospital

Fareeda Ahmed

Stanford University Graduate School of Business

Elliot Marseille

Health Strategies International

James G. Kahn

University of California San Francisco

Research Article

Keywords: covid-19, sars-cov-2, health care workers, cost-effectiveness, screening

DOI: <https://doi.org/10.21203/rs.3.rs-887590/v1>

License:  This work is licensed under a Creative Commons Attribution 4.0 International License.

[Read Full License](#)

Abstract

Background: Transmission of SARS-CoV-2 in health care facilities poses a challenge against pandemic control. Health care workers (HCWs) have frequent and high-risk interactions with COVID-19 patients. We undertook a cost-effectiveness analysis to determine optimal testing strategies for screening HCWs to inform strategic decision-making in health care settings. Methods: We modeled the number of new infections, quality-adjusted life years lost, and net costs related to six testing strategies including no tests. We applied our model to four strata of HCWs, defined by the presence and timing of symptoms. We conducted sensitivity analyses to account for uncertainty in inputs. Results: When screening recently symptomatic HCWs, conducting only a PCR test is preferable; it saves costs and improves health outcomes in the first week post-symptom onset, and costs \$83,000 per quality-adjusted life year gained in the second week post-symptom onset. When screening HCWs in the late clinical disease stage, none of the testing approaches is cost-effective and thus no testing is preferable, yielding \$11 and 0.003 new infections per 10 HCWs. For screening asymptomatic HCWs, antigen testing is preferable to PCR testing due to its lower cost. Conclusions: Both PCR and antigen testing are beneficial strategies to identify infected HCWs and reduce transmission of SARS-CoV-2 in health care settings. IgG testing clinical value depends on test timing and immunity characteristics, however is not cost-effective in a low prevalence setting. As the context of the pandemic evolves, our study provides insight to health-care decision makers to keep the health care workforce safe and transmissions low.

Introduction

In December 2019, a novel zoonotic coronavirus, SARS-CoV-2, emerged in Wuhan, China, and became a global pandemic [1,2]. With over 82 million confirmed cases and nearly two million fatalities worldwide as of December 30, 2020, it has surpassed the impact of the severe acute respiratory syndrome epidemic of 2002 [3,4]. In March 2020, outbreaks of COVID-19, the disease caused by SARS-CoV-2, started occurring in the United States. The country soon had the highest number of COVID-19 cases and fatalities worldwide [3,5].

COVID-19 usually initiates as a lower respiratory infection causing mild to severe pneumonia in most cases and inducing multi-organ systemic effects in some. Asymptomatic infection is common, although uncertainty exists on its prevalence with estimates between 20% to 80% [6,7]. When undetected, asymptomatic infections increase the likelihood of further transmission, emphasizing the need for widespread screening [7]. Health care workers (HCWs) represent a vulnerable population in the context of COVID-19. Due to the nature of their work, they are at heightened risk of SARS-CoV-2 exposure [8,9]. Screening HCWs for SARS-CoV-2 infection is important in preventing new infections and deaths both in health care facilities and among community members of HCWs.

One approach to screen for SARS-CoV-2 is to assess the presence of viral RNA using polymerase chain reaction (PCR) tests, which can provide important information on infection status and allow infected HCWs to self-isolate [10]. However, as the pandemic progressed, health care facilities across the US faced

shortages of PCR testing supplies [11]. Furthermore, a positive PCR test does not necessarily indicate transmissible virus: individuals infected with SARS-CoV-2 may remain PCR-positive for over a month, long after they have cleared active infection [6,12].

An alternative to PCR tests for screening purposes is rapid antigen (Ag) tests. While these tests have lower sensitivity than PCR, they can identify individuals who have high enough viral loads to transmit infection [13,14]. Ag tests are relatively inexpensive (\$5) and provide results in 15 minutes [15].

Finally, while not useful for screening for active infection, antibody tests (specifically tests that detect SARS-CoV-2-specific immunoglobulin G [IgG]) can be administered to identify immune HCWs and inform strategic workforce management decisions. Knowledge of antibody status could allow selective assignment of HCWs who have immunity against SARS-CoV-2 to care for COVID-19 patients, thereby lowering the risk of transmission. Yet, there is limited information on how long immunity lasts or if antibodies reliably assess immunity [16–18].

Variable performance of available tests and complex patterns of biological markers also pose significant challenges to health care officials as they attempt to identify optimal screening strategies [19]. The risks associated with false test results, such as providing false reassurances of immunity (false-positive IgG tests) or unnecessary isolation of HCWs (false-positive PCR or Ag tests), should be considered when developing optimal screening strategies for this population. In this study, we used cost-effectiveness analysis to determine the most effective use of these tests.

While the development of SARS-CoV-2 vaccines have rapidly and significantly changed the context of this pandemic, the subsequent emergence of new SARS-CoV-2 strains highlights the possibility that other SARS-CoV-2 variants may emerge in the future that may not be vaccine-susceptible [20]. In the meantime, HCWs continue to be at risk of contracting the virus as the vaccines are being rolled out [21]. As such, it remains crucial to have measures in place to keep the health care workforce safe and reduce transmissions in the workplace and the community.

Methods

Overview

We conducted a decision model-based cost-effectiveness analysis to identify optimal COVID-19 screening strategies for HCWs. We divided the population into susceptible, infected, and recovered (including vaccinated). To portray the evolution of viral detectability and infectivity through the course of infection, we stratified our population into four groups based on symptom status and duration at time of screening (Fig 1). Asymptomatic individuals were those without COVID-19 symptoms (i.e., including pre-symptomatic), regardless of history of known or suspected COVID-19 exposure. We designed a decision tree incorporating test performance as well as a set of specified actions based on test results. We estimated and compared the number of new infections acquired, quality-adjusted life years (QALYs) lost, and net costs associated with one-time testing using six testing options: (1) no tests, (2) only PCR test,

(3) only Ag test (4) only IgG test, (5) conditional PCR test if IgG test is positive, and (6) concurrent IgG and PCR tests. We calculated incremental cost-effectiveness ratios (ICERs) where appropriate and conducted extensive sensitivity analyses. The model was implemented in Excel[®] (Office 365, Microsoft Corporation) and used @RISK[®] (Palisade Corporation, version 7.6.1) software for sensitivity analyses.

Decision tree design

The decision model incorporates three possible COVID-19 infection states and associated serological profiles, representing the true biological profile of a HCW which is unknown at time of screening (see S1 File). Six different screening strategies (including no screening) were considered. We model the probability of receiving positive or negative test results as dictated by test sensitivity and specificity. According to test results, HCWs take different specified actions, yielding varying rates of transmission. We calculate number of new infections acquired, QALYs lost, and net costs incurred for each screening strategy. A simplified version of the decision tree is presented in S1 File, Appendix G.

Key assumptions

We made several assumptions in constructing the model: (1) Recovered (including vaccinated) individuals have immunity for COVID-19 of 85% [25] (varied in sensitivity analyses). (2) Individuals who have been infected shed viable SARS-CoV-2 for approximately eight days post-symptom onset, after which the probability of shedding viable virus decreases significantly. Positive PCR (but not Ag test) past the duration of infectiousness is due to viral RNA fragments [6,12,22,23]. We explore different durations of shedding viable virus. (3) HCWs who know their viral and antibody status behave differently from those who do not. Those who believe they have recovered take more risks than those with no information. (4) Individuals with SARS-CoV-2 infection cannot acquire a second infection while carrying infectious virus.

Model inputs

The parameter values used in the model are based on extensive literature reviews and personal communications with experts. To account for uncertainty, inputs were varied widely (Table 1).

Health

Three possible states were defined for true disease status. *Susceptible* individuals were defined as those who had never been infected with SARS-CoV-2, those who had recovered but never developed antibodies, or those who had recovered but whose antibodies have waned. These HCWs could acquire but could not transmit virus. *Infected* individuals were defined as individuals who were actively infected with SARS-CoV-2 and could transmit. They may or may not have produced IgG. *Recovered* individuals were defined

as those who have SARS-CoV-2 antibodies, either due to vaccination or a previous infection. This does not necessarily indicate clinical recovery. These HCWs could not transmit SARS-CoV-2 and had a lower probability of acquiring virus than susceptible HCWs. Further details provided in S1 File Appendix A.

Inferred disease status of a HCW was determined by test results and did not always match true disease status due to false positive and false negative results (see S1 File Appendix B). Mismatches between true and inferred status have the potential to increase transmission or incur unnecessary precautions.

Inferences of disease status led to different actions. Infected HCWs were isolated. In health care settings, susceptible HCWs were more likely to be assigned to COVID-19 “cold zones” (no COVID-19 patients) and recovered HCWs were more likely to be assigned to COVID-19 “hot zones” (only COVID-19 patients). In community settings, susceptible HCWs were more likely to take rigorous COVID-19 precautions while recovered or vaccinated HCWs were likely less strict. More can be found in S1 File Appendices C and D).

While we did not explicitly model different infection mitigation measures (e.g., social distancing, mask wearing, or frequent hand washing), the effect of these measures on SARS-CoV-2 transmission was implicitly taken into account through the use of the current effective reproduction number to calculate the number of secondary infections.

Efficacy

While COVID-19 PCR tests are reported to have a sensitivity of only about 70% [31–33], this is attributable to the problematic timing of test administration [45]. Indeed, PCR assays are often described as having high sensitivity, usually above 90% [29,30,46]. However, if an individual is tested shortly after exposure, a negative result is likely as viral load may be too low to detect [30,45]. A positive PCR test result is also not necessarily indicative of viable SARS-CoV-2 [12,22,23]. Herein, sensitivity was estimated as 95% and did not vary by time since symptom onset [29,30]. PCR sensitivity for asymptomatic HCWs was 70% to account for false negative results early in the infection when the individual does not have sufficient viral load [31–33]. For specificity, we used data on the ability to grow viral cultures to estimate the likelihood of having viable virus at different timepoints post-symptom onset [24]. Specificity of PCR testing was varied between 11-99% based on the probability of detecting viable SARS-CoV-2 as opposed to viral RNA fragments. Specificity was calculated as 62% on average for asymptomatic individuals (see S1 File Appendix E).

Specifications of the Ag and IgG tests were determined via literature review and are shown in Table.

Costs

Testing costs for both IgG and PCR tests include cost of testing supplies (swabs, chemical reagents) and human resource costs. The PCR test cost \$51 per test and the IgG test was \$42, while the Ag test cost \$5 [35]. Our base-case assumed that tests would be conducted in-house where equipment and trained

personnel is readily available. Costs could differ if testing is outsourced; this was assessed in sensitivity analyses.

COVID-19 treatment costs differ greatly depending on disease severity. Some infected individuals remain asymptomatic and generate no costs, others may require ambulatory or critical care. We used a weighted mean of costs incurred with varying levels of care [34] (see S1 File Appendix F).

Model outputs

The number of new infections over two weeks was calculated for each probability path using the likelihood of transmission in health care and community settings given different actions taken by HCWs. An indirect transmission multiplier was set as two to account for the remaining infections in the chain.

The number of QALYs lost are calculated for each strategy. QALYs are a standardized measure incorporating morbidity and mortality due to a disease or condition. We used an estimate of 5.52 discounted QALYs lost due to one COVID-19 death (based on US life tables and age distribution of COVID-19 mortality, discount rate 3%) [42,47], multiplied by an infection fatality rate estimate of 0.5% [43,44]. To account for the growing evidence of long-term morbidity, we added an estimated 0.05 additional QALYs per infection [48–51]. We investigated the effect of differing these values in sensitivity analyses.

Net costs included screening and medical costs and were not discounted since all costs were incurred in year one. Medical costs associated with long-term complications were not included due to a paucity of data; this was investigated in sensitivity analyses.

ICERs, expressed as net costs per QALY saved, were calculated when a strategy had higher costs and better outcomes than another. Strategies associated with lower costs and more QALYs saved were dominant; no ICERs were calculated.

Sensitivity analyses

Extensive one-way and multi-way sensitivity analyses were conducted. Sensitivity ranges for deterministic analyses were informed by the low and high estimates reported in relevant literature. Monte Carlo simulations with 1,000 iterations were run for probabilistic sensitivity analyses, with beta distributions for probabilities. Namely, we addressed the uncertainty around treatment costs, test performance, and prevalence of COVID-19 among HCWs.

Results

Base case

We present results separately for asymptomatic HCWs and each of the three clinical periods in which a test may be administered as described in Fig 1. Major findings are presented in Tables 2-5, and summarized in Table 6. Further details may be found in S2 File.

Early clinical period, days 1-7

For ten HCWs who have started experiencing symptoms in the past seven days, conducting no screening results in 24.8 new infections and 1.925 QALYs lost, generating a net cost of \$82,000. This is the least effective option, and it is dominated by PCR-only testing which identifies and mandates isolation for infectious HCWs (Table 2).

Administering only a PCR test is cheaper and more effective than all other strategies except for IgG + PCR testing. While IgG + PCR testing has a small health benefit over only PCR testing, this benefit is so small that the ICER is over \$1 million per QALY gained. As such, PCR-only testing is preferred to IgG + PCR, and strictly dominant over the remaining options. For every ten HCWs that are tested with PCR only, the net cost is \$4,600 with estimated 1.24 new infections, or 0.097 QALYs lost (Table 2). PCR testing only also results in 0.032 HCWs unnecessarily being taken off the health care workforce for two weeks for every ten HCWs that are tested during their first week of symptoms.

Table 2. Results for screening ten HCWs on day 1-7 of having symptoms.

Option	Net Cost	ΔCosts	QALYs Lost	ΔQALYs Lost	ICER (\$/QALYs)
Only PCR	\$4,633	n/a	0.09661	n/a	n/a
IgG + PCR	\$5,037	\$404	0.09624	0.00037	\$1,081,393
Only Ag	\$8,293	\$3,660	0.19313	-0.09652	Dominated
IgG, if positive PCR	\$64,297	\$59,664	1.49459	-1.39798	Dominated
No Test	\$82,172	\$77,539	1.92529	-1.82868	Dominated
Only IgG	\$82,497	\$77,863	1.92305	-1.82644	Dominated

Almost all infected individuals have viable virus at this time and positive PCR test results are treated as true positives, indicating isolation. Ag, antigen; ICER, incremental cost-effectiveness ratio; IgG, immunoglobulin G; PCR, polymerase chain reaction; QALY, quality-adjusted life year; Δ: difference.

Early clinical period, days 8-14

Results for screening HCWs in their second week post-symptom onset resemble those of HCWs who have been symptomatic more recently, as explained above. Since individuals are more likely to clear infectious virus by this time, the number of new infections and associated costs are significantly lower across all screening approaches compared to HCWs being screened earlier in the course of infection (Table 3). At

this stage PCR testing is no longer dominant, but it is the most cost-effective strategy with an ICER of \$35 thousand per QALY gained.

Table 3. Results for screening ten HCW on day 8-14 of having symptoms.

Option	Net Cost	ΔCost	QALYs Lost	ΔQALYs Lost	ICER (\$/QALYs)
Only Ag	\$353	n/a	0.00709	n/a	n/a
Only PCR	\$560	\$207	0.00117	0.00592	\$34,980
IgG, if positive PCR	\$836	\$277	0.00860	-0.00743	Dominated
IgG + PCR	\$979	\$419	0.00116	0.00001	\$34,048,150
No Test	\$981	\$421	0.02299	-0.02182	Dominated
Only IgG	\$1,393	\$833	0.02279	-0.02163	Dominated

Some infected individuals have viable virus at this time and positive PCR test results are treated as true positives, indicating isolation. Ag, antigen; ICER, incremental cost-effectiveness ratio; IgG, immunoglobulin G; PCR, polymerase chain reaction; QALY, quality-adjusted life year; Δ: difference.

Late clinical period

Not screening ten HCWs in later stages of clinical disease leads to 0.003 additional infections and 0.0003 lost QALYs, and generates a net cost of \$11 due to susceptible HCWs acquiring SARS-CoV-2 (Table 4). At this stage, no test is the dominant strategy. While testing strategies that include Ag or IgG tests provide some minor health benefits compared to no test, these benefits are so small that the cost per QALY gained for all these options are in the order of millions, thus they are not cost-effective. PCR-only testing slightly increases the number of QALYs lost compared to no test due to susceptible HCWs receiving false positive test results and assuming they are protected from infection.

Table 4. Results for screening ten HCW on day 15-39 of having symptoms.

Option	Net Cost	ΔCost	QALYs Lost	ΔQALYs Lost	ICER (\$/QALYs)
No Test	\$11	n/a	0.00027	n/a	n/a
Only Ag	\$61	\$49	0.00025	0.00001	\$3,909,046
Only IgG	\$431	\$420	0.00026	0.00001	\$37,917,445
IgG, if positive PCR	\$483	\$472	0.00026	0.00001	\$42,650,284
Only PCR	\$522	\$511	0.00028	-0.00001	Dominated
IgG + PCR	\$941	\$930	0.00026	0.00001	\$84,011,883

No infected individuals have viable virus at this time and positive PCR test results are treated as false positives; does not indicate isolation. Ag, antigen; ICER, incremental cost-effectiveness ratio; IgG, immunoglobulin G; PCR, polymerase chain reaction; QALY, quality-adjusted life year; Δ: difference.

Asymptomatic

Not screening asymptomatic HCWs leads to 0.03 new infections, 0.002 QALYs lost and \$104 in net costs per ten HCWs (Table 5). Administering an Ag test is the dominant approach for asymptomatic screening costing \$86 per ten HCW tested. Both PCR-only and IgG+PCR screening are slightly more effective than Ag-only, however they have a significantly higher net costs leading to large ICERs of \$8-13 million per QALY gained.

Table 5. Results for screening ten asymptomatic HCWs.

Option	Net Cost	ΔCost	QALYs Lost	ΔQALYs Lost	ICER (\$/QALYs)
Only Ag	\$86	n/a	0.00084	n/a	Dominant
No Test	\$104	\$18	0.00244	-0.00160	Dominated
Only IgG	\$523	\$437	0.00242	-0.00158	Dominated
Only PCR	\$543	\$457	0.00078	0.00006	\$7,746,741
IgG, if positive PCR	\$704	\$618	0.00137	-0.00053	Dominated
IgG + PCR	\$963	\$877	0.00078	-0.00007	\$13,370,356

Infected individuals may or may not have viable virus and positive PCR test results are treated as true positives, indicating isolation. Ag, antigen; ICER, incremental cost-effectiveness ratio; IgG, immunoglobulin G; PCR, polymerase chain reaction; QALY, quality-adjusted life year; Δ: difference.

Table 6. Summary of results.

Clinical Status	Base Case Result	Uncertainty
Early clinical period, days 1-7	Only PCR, dominant	PCR testing is 74% likely to save QALYs but only 26% likely to save costs due to variations in test sensitivities.
Early clinical period, days 8-14	Only PCR, \$34,000/QALY gained	PCR-only is 34% likely to be dominant over Ag testing, if transmissible infection persists into second week post-symptom onset. As this duration decreases, cost-effectiveness of PCR testing also decreases, but remains below \$180,000/QALY gained with 50% likelihood.
Late clinical period	No Test, dominant	No other testing strategy is cost-effective. The magnitude of ICERs depend on QALYs lost per infection and transmission rate of SARS-CoV-2.
Asymptomatic	Only Ag, dominant	25% likelihood of being cost-effective (rather than dominant), depending on prevalence of transmissible infection among asymptomatic HCWs and medical costs.

Ag, antigen; ICER, incremental cost-effectiveness ratio; PCR, polymerase chain reaction; QALY, quality-adjusted life year.

Sensitivity Analyses

Sensitivity analyses reveal little variation in outcomes with changing inputs. For HCWs in the first week of having symptoms, PCR testing was 74% likely to save more QALYs than Ag testing, but only 26% likely to be cheaper (Figs 2 and 3). Both of these outcomes were most dependent on PCR and Ag test sensitivity which accounted for 45% to 29% of variance.

When testing in the second week, PCR testing remained the preferable strategy but with decreasing cost-effectiveness (ICERs up to \$750 thousand per QALY saved), primarily due to the prevalence of transmissible infection in this group which accounted for 23-32% of variance.

In the late clinical disease stage, Ag testing always saved QALYs compared to no test but was not cost-effective due to very small health gains. PCR-only testing in this group had a 12% probability of saving QALYs compared to no testing (as opposed to increasing health losses in base-case), however these gains also were not large enough to render PCR cost-effective over no testing. Thus, no testing remained the optimal strategy. In all three groups of symptomatic HCWs, IgG+PCR testing led to small QALY gains that were dominated by others. Remaining strategies that did not include viral tests (either PCR or Ag) were dominated in simulations.

For asymptomatic screening, Ag tests always saved QALYs compared to no testing but was more expensive in 25% of simulations when COVID-19 treatment costs or prevalence was low (Fig 4). In these cases, Ag testing was cost-effective with ICERs up to \$80 thousand per QALY gained (as opposed to dominant in base-case). Inputs that most affected this ICER were cost of COVID-19 treatment and

prevalence of transmissible infection among asymptomatic individuals, which accounted for 41% and 19% of variance, respectively. Comparing PCR-only to Ag testing, the former had a 65% probability of saving QALYs over Ag testing, however was not cost-effective due to small health gains and large increases in net costs.

Discussion

This study assessed the cost-effectiveness of six screening approaches for HCWs in the US using one-time PCR, Ag, and/or IgG assays under varying conditions based on clinical presentation. When the prevalence of COVID-19 is low, findings suggest that the best screening approach for recently symptomatic HCWs is PCR testing. Symptomatic HCWs in the first or second week, if truly infected with SARS-CoV-2, are more likely to be infectious than those in the later stages of clinical disease, and isolating these individuals is more important in reducing transmission than knowing their antibody status. Notably, studies have shown Ag test sensitivity approaches that of PCR when testing those within first week of symptoms [27,28]. In this case, Ag testing might be a promising alternative for screening for its lower cost and faster turnaround time. Indeed, our sensitivity analyses show variable health gains and cost savings with these two tests, suggesting the possibility of Ag testing being dominant (cheaper and more effective) over PCR-only.

Coupling PCR testing with an IgG test provides a minute health gain due to fewer susceptible HCWs being assigned to COVID-19 “hot zones” where risk of acquiring infection is higher. Yet, IgG + PCR testing is not a cost-effective option, as the additional net cost of this strategy is prohibitive.

Conversely, for HCWs in late clinical disease, the risk of still being infectious is low, and knowledge of antibody status is more helpful to reduce transmission by strategic workforce management if long-lasting immunity is conferred. As the course of the infection progresses, IgG titer levels increase. As such, its utility increases over time. Previous studies on antibody responses to SARS-CoV-2 also recommend conducting IgG tests around the third week of infection due to higher detection rates at this time [38]. Yet, with ICERs over \$30 million per QALY gained, strategies incorporating IgG tests are still not cost-effective in late clinical disease because of the low prevalence of COVID-19. Notably, PCR testing in late clinical disease leads to poorer health outcomes than no screening at all. A positive PCR result for HCWs who are three or more weeks post-symptom onset is interpreted as a false positive (i.e., due to viral fragments, not transmissible). These individuals are falsely reassured that they have recovered from COVID-19 and therefore are protected. They may have lower fidelity to personal protective equipment and may take more risks, leading to a slight increase in the number of new infections. A positive Ag test is not interpreted as a false-positive at this stage (even though it may be), because unlike PCR tests, Ag test are not suspect of detecting low and non-transmissible viral loads.

For screening asymptomatic HCWs, Ag testing is preferable over others. It is cheaper and more effective than most other testing strategies. PCR-only testing saves additional QALYs, however the high cost of PCR compared to Ag tests leads to a high ICER that is not cost-effective. Testing strategies that

include antibody testing are all dominated by PCR-only testing, because false positive antigen tests of asymptomatic HCWs lead to false reassurances of protection and more risk-taking.

Findings of robust memory T cell responses to SARS-CoV-2 in the absence of antibodies suggest that seronegative individuals may also be protected from reinfection [52]. This emphasizes the possibility of controlling transmission in health care settings by strategic decision-making. However, it also indicates that the proportion of HCWs who are immune might have been underestimated in this study, leading to underestimated cost-effectiveness of all screening strategies. Different ways of assessing immunity may increase effectiveness of strategic workforce management in lowering transmissions of SARS-CoV-2 in health care settings.

Our analysis provides insight for health care decision makers. We highlight the importance of scaling up PCR and Ag testing to identify infectious HCWs to reduce spread of infection in health care and community settings. We also demonstrate the potential benefits of strategic scheduling of HCWs while noting that long-term seroprevalence and immunological studies are needed before policy recommendations can be given with confidence. While this analysis does not find antibody testing cost-effective for HCWs, this strategy does allow reductions in transmission to and from HCWs in late clinical disease. This suggests that alternative ways of assessing immunity may provide a cost-effective approach to informing workforce management decisions to reduce spread.

Limitations

Uncertainty, while always an issue in cost-effectiveness analyses, is particularly a concern here, given the limited epidemiological and clinical information on COVID-19. We therefore made several assumptions based on characteristics of other similar pathogens, such as SARS, and used informed estimates for data inputs. Specifically, the definition we used for PCR specificity based on infectivity rather than being infected introduced some uncertainty. To address this limitation, we consulted with experts between March-July 2020 and conducted sensitivity analyses using wide ranges for these inputs. We found that varying these key inputs did not substantially change findings.

Second, the simulated IgG test provides a quantitative measure of IgG and does not differentiate between neutralizing and non-neutralizing antibodies. The immunologic ramifications of having IgG are also not yet fully understood. Our base-case analysis assumes high protection but does not make any conjectures about duration of immunity. If IgG provides transient protection, then the falsely reassuring effect of IgG testing across all four strata of HCWs would increase over time.

Third, this study does not incorporate the loss of productivity due to unnecessary isolation of HCWs. It is plausible that given this inefficiency, PCR testing may not be a dominant screening approach. Nonetheless, PCR testing would remain the most effective strategy to decrease the number of new infections because it would still identify the most cases. Studies assessing screening strategies for the

general workforce and college campuses corroborate that PCR screening is a cost-effective option compared to options such as symptom or fever screening [53,54].

Fourth, the utility of Ag testing is debated. The test's analytical sensitivity is poor, while it can more accurately identify higher viral loads which are more likely to be transmissible. This suggests that our model underestimates the cost-effectiveness of Ag testing for asymptomatic HCWs, and that it is an even more preferable strategy for this group than we estimate.

Finally, we recognize that some oversimplifications were made. The decisions we modeled are based solely on test results, whereas in reality these test results would be considered alongside exposure history among other factors that may influence health outcomes.

While these uncertainties are real, we believe that our assumptions and estimates reflect the best available evidence at the time of this writing. As new information becomes available, the interpretation of our results will likely change.

Future work

There is much to be discovered regarding SARS-CoV-2 and COVID-19, and new findings must be integrated into this analysis to improve the accuracy of inputs and results. If other testing approaches become available, these should be considered in the model. This analysis reflects the cost-effectiveness of screening strategies in the US where the prevalence of COVID-19 is low. The results and their interpretation will differ in other settings where conditions may be different. As the pandemic moves through more vulnerable regions, it will be critical to apply this analysis to different populations to help ensure that critical resources are allocated optimally.

Conclusion

As a result of the COVID-19 pandemic, resource shortages occurred throughout the US. We conducted a cost-effectiveness analysis to understand the optimal allocation of testing resources for COVID-19 to screen HCWs and to inform workforce management decisions. Our results suggest that the screening approach should be different depending on the clinical presentation of HCWs being screened. Among the testing strategies analyzed, PCR testing is the dominant approach for HCWs who started seeing COVID-19 symptoms in the past 1-14 days, whereas Ag tests should be preferred for asymptomatic HCWs. For those who are more than 15 days post-symptom onset, PCR testing has low utility and IgG testing is too expensive; no testing is the optimal approach. These findings are based on US-specific inputs and several key assumptions. As the body of evidence grows, these findings should be reviewed and updated.

Declarations

Ethics approval and consent to participate

Not applicable.

Consent for publication

Not applicable.

Availability of data and materials

All data generated or analysed during this study are included in this published article and its supplementary information files.

Competing interests

The authors declare that they have no competing interests.

Funding

This work was supported by the National Institute on Drug Abuse grant number 5R37DA015612-170. The funder did not play a role in the design of the study, and collection, analysis, and interpretation of data, and in writing the manuscript.

Authors' contributions

TW and JGK conceived the study and guided the work. SM conducted all analyses, wrote the first draft of the manuscript, and completed final editing. All authors contributed to study design, data collection and analysis, and preparation of the manuscript.

Acknowledgements

We thank G Rutherford, N Martin, and E Bendavid for advice and input on the analyses and manuscript.

Abbreviations

Ag, antigen; COVID-19, coronavirus disease 2019; HCW, health care worker; ICER, incremental cost-effectiveness ratio; IgG, immunoglobulin G; PCR, polymerase chain reaction; QALY, quality-adjusted life year; SARS-CoV-2, severe acute respiratory syndrome coronavirus 2.

References

1. Pneumonia of unknown cause – China [Internet]. WHO. World Health Organization; 2020 [cited 2020 May 20]. Available from: <https://www.who.int/csr/don/05-january-2020-pneumonia-of-unknown-cause-china/en/>
2. Phelan AL, Katz R, Gostin LO. The Novel Coronavirus Originating in Wuhan, China: Challenges for Global Health Governance. *JAMA*. 2020 Feb 25;323(8):709–10.
3. COVID-19 Dashboard by CSSE at Johns Hopkins University [Internet]. 2020 [cited 2020 Jun 12]. Available from: <https://coronavirus.jhu.edu/map.html>
4. NHS. SARS (severe acute respiratory syndrome) [Internet]. 2019 [cited 2020 Jun 12]. Available from: <https://www.nhs.uk/conditions/sars/>
5. Taylor DB. How the Coronavirus Pandemic Unfolded: a Timeline. *The New York Times* [Internet]. 2020 May 12 [cited 2020 May 21]; Available from: <https://www.nytimes.com/article/coronavirus-timeline.html>
6. Position Statement from the National Centre for Infectious Diseases and the Chapter of Infectious Disease Physicians, Academy of Medicine, Singapore - 23 May 2020. 2020.
7. Nishiura H, Kobayashi T, Miyama T, Suzuki A, Jung S mok, Hayashi K, et al. Estimation of the asymptomatic ratio of novel coronavirus infections (COVID-19). *Int J Infect Dis*. 2020 May 1;94:154–5.
8. Schwartz J, King C-C, Yen M-Y. Protecting Healthcare Workers During the Coronavirus Disease 2019 (COVID-19) Outbreak: Lessons From Taiwan’s Severe Acute Respiratory Syndrome Response. *Clin Infect Dis* [Internet]. 2020 [cited 2020 Jun 2]; Available from: <https://academic.oup.com/cid/advance-article-abstract/doi/10.1093/cid/ciaa255/5804239>
9. Nguyen LH, Drew DA, Graham MS, Joshi AD, Guo C-G, Ma W, et al. Risk of COVID-19 among front-line health-care workers and the general community: a prospective cohort study. *Lancet Public Heal* [Internet]. 2020 Sep 1 [cited 2021 May 24];5(9):e475–83. Available from: www.thelancet.com/public-health
10. Hadaya J, Schumm M, Livingston EH. Testing Individuals for Coronavirus Disease 2019 (COVID-19). *JAMA*. 2020 May 19;323(19).
11. Canipe C, Hartman T. The COVID-19 testing challenge [Internet]. Reuters Graphics. 2020 [cited 2020 Jun 8]. Available from: <https://graphics.reuters.com/HEALTH->

12. Atkinson B, Petersen E. SARS-CoV-2 shedding and infectivity. *Lancet* [Internet]. 2020;395(10233):1339–40. Available from: [http://dx.doi.org/10.1016/S0140-6736\(20\)30868-0](http://dx.doi.org/10.1016/S0140-6736(20)30868-0)
13. Mina MJ, Peto TE, García-Fiñana M, Semple MG, Buchan IE. Clarifying the evidence on SARS-CoV-2 antigen rapid tests in public health responses to COVID-19. *Lancet* [Internet]. 2021 Feb 17 [cited 2021 Apr 29];397(10283):1425–7. Available from: <https://doi.org/10.1093/eurheartj/ehaa575>.
14. Johnson-León M, Caplan AL, Kenny L, Buchan I, Fesi L, Olhava P, et al. Executive summary: It's wrong not to test: The case for universal, frequent rapid COVID-19 testing. *EClinicalMedicine* [Internet]. 2021 Feb 19 [cited 2021 Apr 29];33:100759. Available from: <https://doi.org/10.1016/j.eclinm.2021.100759>
15. Westman N. FDA authorizes Abbott's fast \$5 COVID-19 test. *The Verge* [Internet]. 2020 [cited 2021 Jun 9]; Available from: <https://www.theverge.com/2020/8/26/21403432/fda-authorizes-binaxnow-covid-19-test-abbott-cheap-fast>
16. Grzelak L, Temmam S, Planchais C, Demeret C, Huon C, Guivel-Benhassine F, et al. SARS-CoV-2 serological analysis of COVID-19 hospitalized patients, pauci-symptomatic individuals and blood donors. *medRxiv* [Internet]. 2020 [cited 2020 May 28]; Available from: <https://doi.org/10.1101/2020.04.21.20068858>
17. Wajnberg A, Mansour M, Leven E, Bouvier NM, Patel G, Firpo A, et al. Humoral immune response and prolonged PCR positivity in a cohort of 1343 SARS-CoV 2 patients in the New York City region 2. *medRxiv* [Internet]. 2020 [cited 2020 May 19]; Available from: <https://doi.org/10.1101/2020.04.30.20085613>
18. Long QX, Liu BZ, Deng HJ, Wu GC, Deng K, Chen YK, et al. Antibody responses to SARS-CoV-2 in patients with COVID-19. *Nat Med*. 2020 Apr 29;
19. Mandavilli A. Coronavirus Antibody Tests: Can You Trust the Results? [Internet]. *The New York Times*. 2020 [cited 2020 Jun 12]. Available from: <https://www.nytimes.com/2020/04/24/health/coronavirus-antibody-tests.html>
20. Seaman J. New, more contagious COVID-19 strain confirmed in Colorado. *The Denver Post* [Internet]. 2020 Dec 29 [cited 2020 Dec 30]; Available from: <https://www.denverpost.com/2020/12/29/new-covid-19-variant-colorado/>
21. Kelley A. ER nurse tests positive for COVID-19 a week after getting vaccine | *TheHill* [Internet]. *The Hill*. 2020 [cited 2020 Dec 30]. Available from: <https://thehill.com/changing-america/well-being/longevity/532100-er-nurse-tests-positive-for-covid-19-a-week-after>

22. Wölfel R, Corman VM, Guggemos W, Seilmaier M, Zange S, Müller MA, et al. Virological assessment of hospitalized patients with COVID-2019. *Nature* [Internet]. 2020 [cited 2020 May 30];581:465. Available from: <https://doi.org/10.1038/s41586-020-2196-x>
23. Joynt GM, Wu WK. Understanding COVID-19: what does viral RNA load really mean? *Lancet Infect Dis* [Internet]. 2020;3099(20):19–20. Available from: [http://dx.doi.org/10.1016/S1473-3099\(20\)30237-1](http://dx.doi.org/10.1016/S1473-3099(20)30237-1)
24. He X, Lau EHY, Wu P, Deng X, Wang J, Hao X, et al. Temporal dynamics in viral shedding and transmissibility of COVID-19. *Nat Med*. 2020 May 1;26(5):672–5.
25. Hall VJ, Foulkes S, Charlett A, Atti A, Monk EJM, Simmons R, et al. SARS-CoV-2 infection rates of antibody-positive compared with antibody-negative health-care workers in England: a large, multicentre, prospective cohort study (SIREN). *Lancet* [Internet]. 2021 Apr 17 [cited 2021 May 24];397(10283):1459–69. Available from: <https://doi.org/10.1016/>
26. EUA Authorized Serology Test Performance [Internet]. US Food and Drug Administration. [cited 2021 Jun 9]. Available from: <https://www.fda.gov/medical-devices/coronavirus-disease-2019-covid-19-emergency-use-authorizations-medical-devices/eua-authorized-serology-test-performance>
27. Pollock NR, Jacobs JR, Tran K, Cranston AE, Smith S, O’Kane CY, et al. Performance and Implementation Evaluation of the Abbott BinaxNOW Rapid Antigen Test in a High-Throughput Drive-Through Community Testing Site in Massachusetts. *J Clin Microbiol* [Internet]. 2021 Feb 23 [cited 2021 Apr 28];59(5):83–104. Available from: <http://jcm.asm.org/>
28. Pilarowski G, Lebel P, Sunshine S, Liu J, Crawford E, Marquez C, et al. Performance Characteristics of a Rapid Severe Acute Respiratory Syndrome Coronavirus 2 Antigen Detection Assay at a Public Plaza Testing Site in San Francisco. *J Infect Dis*. 2021;223(7):1139–44.
29. Shen M, Zhou Y, Ye J, Abdullah AL-maskri AA, Kang Y, Zeng S, et al. Recent advances and perspectives of nucleic acid detection for coronavirus [Internet]. Vol. 10, *Journal of Pharmaceutical Analysis*. Xi’an Jiaotong University; 2020 [cited 2020 Jun 24]. p. 97–101. Available from: </pmc/articles/PMC7102540/?report=abstract>
30. Tahamtan A, Ardebili A. Real-time RT-PCR in COVID-19 detection: issues affecting the results [Internet]. Vol. 20, *Expert Review of Molecular Diagnostics*. Taylor and Francis Ltd; 2020 [cited 2020 Jun 24]. p. 453–4. Available from: <https://www.ncbi.nlm.nih.gov/pmc/articles/PMC7189409/>
31. Reddy KP, Shebl FM, Foote JHA, Harling G, Scott JA, Panella C, et al. Cost-effectiveness of public health strategies for COVID-19 epidemic control in South Africa: a microsimulation modelling study. *Lancet Glob Heal* [Internet]. 2021 Feb 1 [cited 2021 Jun 9];9(2):e120–9. Available from: <https://pubmed.ncbi.nlm.nih.gov/33188729/>

32. Yang Y, Yang M, Yuan J, Wang F, Wang Z, Li J, et al. Laboratory Diagnosis and Monitoring the Viral Shedding of SARS-CoV-2 Infection. *Innovation*. 2020 Nov 25;1(3):100061.
33. Wang W, Xu Y, Gao R, Lu R, Han K, Wu G, et al. Detection of SARS-CoV-2 in Different Types of Clinical Specimens. *JAMA* [Internet]. 2020 May 12 [cited 2021 Jun 9];323(18):1843–4. Available from: <https://jamanetwork.com/>
34. Rae M, Claxton G, Kurani N, McDermott D, Cox C. Potential costs of COVID-19 treatment for people with employer coverage [Internet]. Peterson-KFF Health System Tracker. 2020 [cited 2020 Jun 24]. Available from: <https://www.healthsystemtracker.org/brief/potential-costs-of-coronavirus-treatment-for-people-with-employer-coverage/>
35. Medicare Administrative Contractor (MAC) COVID-19 Test Pricing. 2021.
36. Satyanarayana M. COVID-19 antibody tests raise as many questions as they answer. *C&EN Glob Enterp* [Internet]. 2020 Jun 3 [cited 2020 Jun 26];98(22):29–33. Available from: <https://pubs.acs.org/doi/10.1021/cen-09822-cover>
37. Cairns E. Covid-19 antibody tests face a very specific problem [Internet]. *Evaluate Vantage*. 2020 [cited 2020 Jun 26]. Available from: <https://www.evaluate.com/vantage/articles/analysis/spotlight/covid-19-antibody-tests-face-very-specific-problem>
38. Zhao J, Yuan Q, Wang H, Liu W, Liao X, Su Y, et al. Antibody responses to SARS-CoV-2 in patients of novel coronavirus disease 2019. *Clin Infect Dis* [Internet]. 2020 [cited 2020 May 19]; Available from: <https://academic.oup.com/cid/advance-article-abstract/doi/10.1093/cid/ciaa344/5812996>
39. California For All. Tracking COVID-19 in California [Internet]. [cited 2021 Apr 28]. Available from: <https://covid19.ca.gov/state-dashboard/>
40. California Department of Public Health. COVID-19 Seroprevalence Data [Internet]. 2021 Apr 15 [cited 2021 Apr 28]. Available from: <https://www.cdph.ca.gov/Programs/CID/DCDC/Pages/COVID-19/Sero-prevalence-COVID-19-Data.aspx>
41. Centre for Mathematical Modelling of Infectious Diseases (CMMID). Covid-19: Estimates for California (United States) [Internet]. 2021 [cited 2021 Apr 28]. Available from: <https://epiforecasts.io/covid/posts/subnational/united-states/california/>
42. Avalon Health Economics. COVID-19 QALYs calculator. 2020.
43. Ioannidis JPA. The infection fatality rate of COVID-19 inferred from seroprevalence data. *medRxiv* [Internet]. 2020 Jun 8 [cited 2020 Jul 2]; Available from: <https://doi.org/10.1101/2020.05.13.20101253>

44. Mallapaty S. How deadly is the coronavirus? Scientists are close to an answer. *Nature* [Internet]. 2020 Jun 16 [cited 2020 Jul 2]; Available from: <https://www.nature.com/articles/d41586-020-01738-2>
45. Chang D, Mo G, Yuan X, Tao Y, Peng X, Wang F-S, et al. Time Kinetics of Viral Clearance and Resolution of Symptoms in Novel Coronavirus Infection. *Am J Respir Crit Care Med* [Internet]. 2020 [cited 2020 May 28];201(9):1150–2. Available from: www.atsjournals.org.
46. Wan Z, Zhang Y, He Z, Liu J, Lan K, Hu Y, et al. A Melting Curve-Based Multiplex RT-qPCR Assay for Simultaneous Detection of Four Human Coronaviruses. *Int J Mol Sci* [Internet]. 2016 Nov 23 [cited 2020 Jun 24];17(11):1880. Available from: <http://www.mdpi.com/1422-0067/17/11/1880>
47. Briggs A. Moving Beyond “Lives-Saved” From COVID-19 [Internet]. Avalon Health Economics LLC. 2020 [cited 2020 Jul 2]. Available from: <https://avalonecon.com/moving-beyond-lives-saved-from-covid-19/>
48. Helms J, Kremer S, Merdji H, Clere-Jehl R, Schenck M, Kummerlen C, et al. Neurologic Features in Severe SARS-CoV-2 Infection. *N Engl J Med* [Internet]. 2020 Jun 4 [cited 2020 Jun 25];382(23):2268–70. Available from: <http://www.nejm.org/doi/10.1056/NEJMc2008597>
49. Frontera J, Mainali S, Fink EL, Robertson CL, Schober M, Ziai W, et al. Global Consortium Study of Neurological Dysfunction in COVID-19 (GCS-NeuroCOVID): Study Design and Rationale. *Neurocrit Care* [Internet]. 2020 [cited 2020 Jun 25];1. Available from: [/pmc/articles/PMC7243953/?report=abstract](https://pubmed.ncbi.nlm.nih.gov/34411111/)
50. Hsia R, Razzak J, Tsai AC, Hirshon JM. Placing emergency care on the global agenda. *Ann Emerg Med*. 2010;56(2):142–9.
51. Tomasoni D, Italia L, Adamo M, Inciardi RM, Lombardi CM, Solomon SD, et al. COVID-19 and heart failure: from infection to inflammation and angiotensin II stimulation. Searching for evidence from a new disease. *Eur J Heart Fail* [Internet]. 2020 May 15 [cited 2020 Jun 25];ejhf.1871. Available from: <https://onlinelibrary.wiley.com/doi/abs/10.1002/ejhf.1871>
52. Sekine T, Perez-Potti A, Rivera-Ballesteros O, Strålin K, Gorin J-B, Olsson A, et al. Robust T cell immunity in convalescent individuals with asymptomatic or mild COVID-19. *Cell* [Internet]. 2020 [cited 2020 Sep 1]; Available from: <https://doi.org/10.1016/j.cell.2020.08.017>
53. Padda G. Evaluating the cost-effectiveness of COVID-19 screening strategies in the workplace. University of California, San Francisco; 2020.
54. Paltiel AD, Zheng A, Walensky RP. Assessment of SARS-CoV-2 Screening Strategies to Permit the Safe Reopening of College Campuses in the United States. *JAMA Netw Open* [Internet]. 2020 Jul 31 [cited 2021 Apr 28];3(7):e2016818–e2016818. Available from: <https://jamanetwork.com/>

Table 1

Table 1. Base-case values and ranges for model inputs.

Input	Base-Case Value	Range	Source
<i>Test performance</i>			
IgG test sensitivity	98.1%	89.9% - 99.7%	US FDA [26]
IgG test specificity	99.6%	99.2% - 99.8%	US FDA [26]
Ag test sensitivity in early clinical disease, days 1-7	90%	70% - 95%	Pollock 2021 [27]
Ag test sensitivity in early clinical disease (days 8-14), late clinical disease (days 15-39), asymptomatic	70%	50% - 90%	Pollock 2021 [27], Pilarowski 2021 [28]
Ag test specificity	99.6%	99.6% - 100%	Pollock 2021 [27], Pilarowski 2021 [28]
PCR test sensitivity, symptomatic	95%	67% - 100%	Shen 2020 [29], Tahamtan 2020 [30]
PCR test sensitivity, asymptomatic	70%	53% - 95%	Reddy 2021 [31], Yang 2020 [32], Wang 2020 [33]
PCR test specificity in early clinical disease, days 1-7	99%	60% - 100%	See S1 File, Appendix E for calculation.
PCR test specificity in early clinical disease, days 8-14	11%	9% - 12%	
PCR test specificity in late clinical disease	66%	50% - 100%	
PCR test specificity when asymptomatic	62%	44% - 82%	
<i>Cost inputs</i>			
Cost of COVID-19 treatment	\$3,312	\$1000 - \$12,000	Rae 2020 [34]
Cost of PCR testing	\$51	\$20 - \$120	CMS 2021 [35]
Cost of IgG testing	\$42	\$20 - \$120	CMS 2021 [35], Satyanarayana 2020 [36], Cairns 2020 [37]
<i>Viral profiles</i>			
Likelihood of infectiousness in early clinical disease, days 1-7	89.3%	43.6 - 97.1%	Wölfel 2020 [22]

Likelihood of infectiousness in early clinical disease, days 8-14	7.9%	0.7 – 36.4%	
Likelihood of infectiousness in late clinical disease	0.0%	0.0 – 0.8%	
<i>Antibody profiles</i>			
Likelihood of having no antibodies in early clinical disease, days 1-7	67.6%	61.7 – 69.9%	Zhao 2020 [38]
Likelihood of having no antibodies in early clinical disease, days 8-14	19.3%	10.4 – 22.3%	
Likelihood of having no antibodies in late clinical disease	0.1%	0.0 – 1%	
<i>Epidemiologic inputs</i>			
Point prevalence of COVID-19 infection in the community	0.002	0.0005 – 0.008	California COVID-19 Dashboard [39]
Proportion of population recovered (or vaccinated)	0.47	0.43 – 0.70	California DPH [40]
Probability of asymptomatic infection	0.4	0.2 – 0.8	Nishiura 2020 [7]
Effective reproduction number with precautions	0.85	0.50 – 1.5	CMMID 2021 [41]
Immunity conferred	85%	50 – 100%	Hall 2021 [25]
QALYs lost due to one COVID-19 infection	0.078	0.05 – 0.21	Avalon Health Economics 2020 [42], Ioannidis 2020 [43], Mallapaty 2020 [44]

Figures

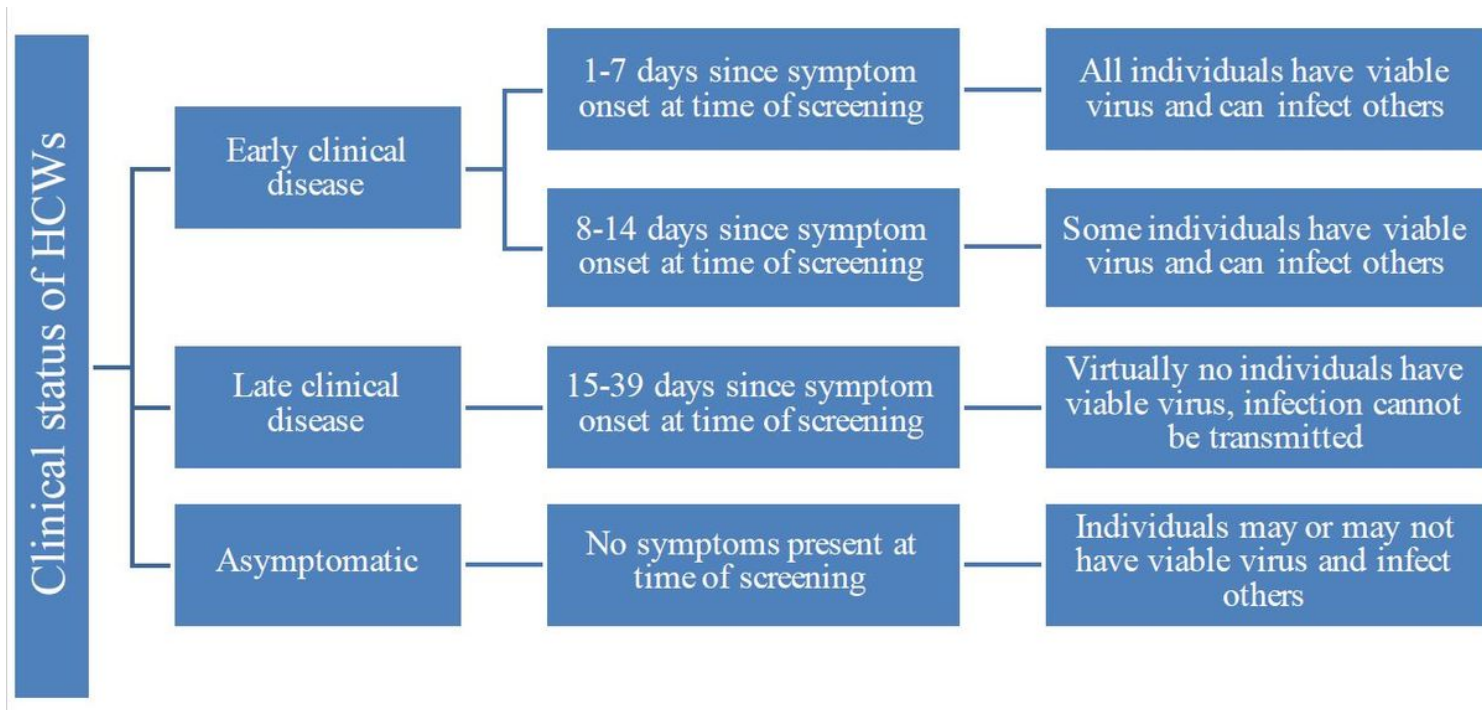


Figure 1

Clinical status of HCWs based on existence of respiratory symptoms at time of screening [22–24].

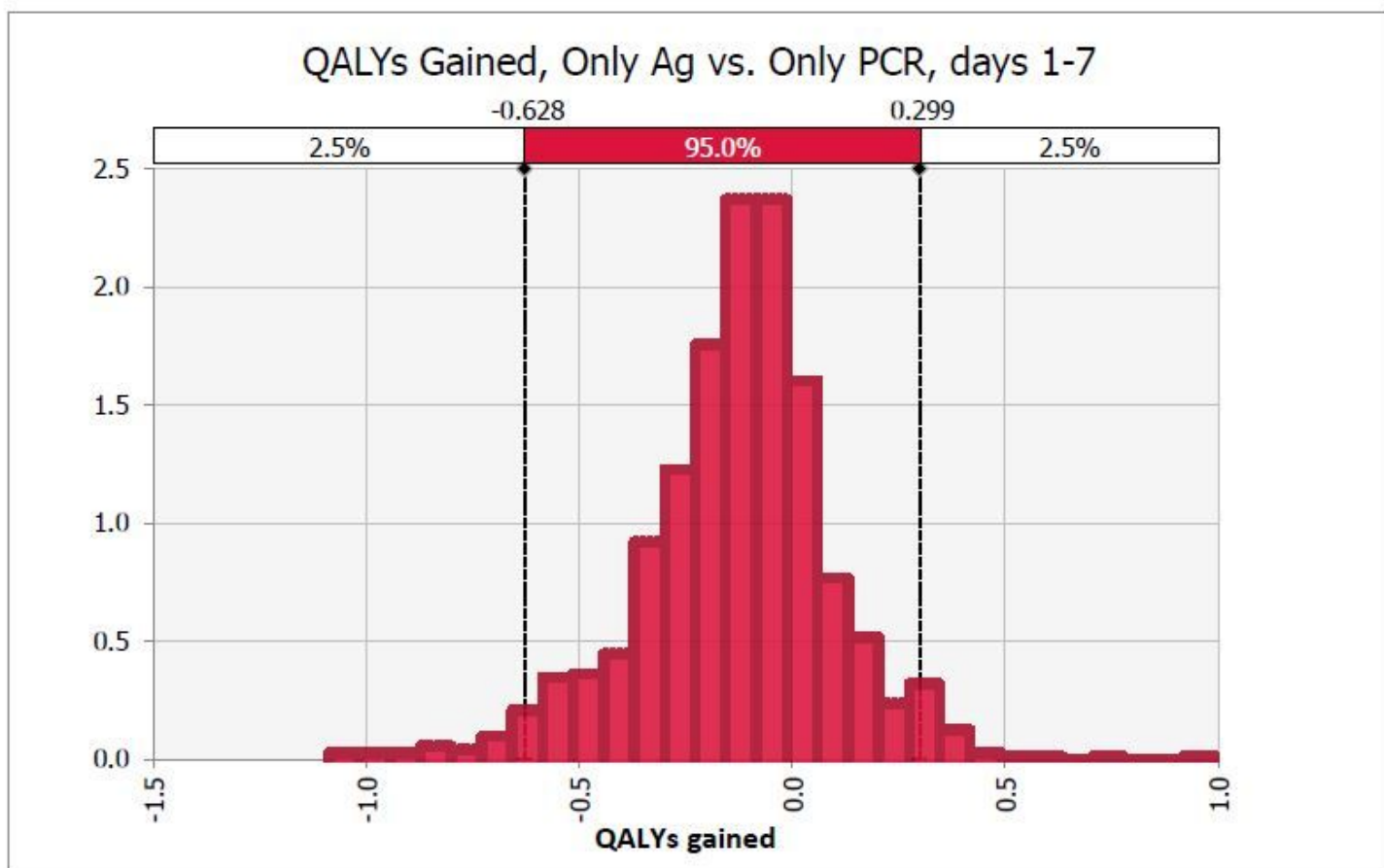


Figure 2

Probability distribution of QALYs saved with Ag vs. PCR-only testing in early clinical disease, days 1-7. PCR screening saves more QALYs than Ag testing in 74% of simulations.

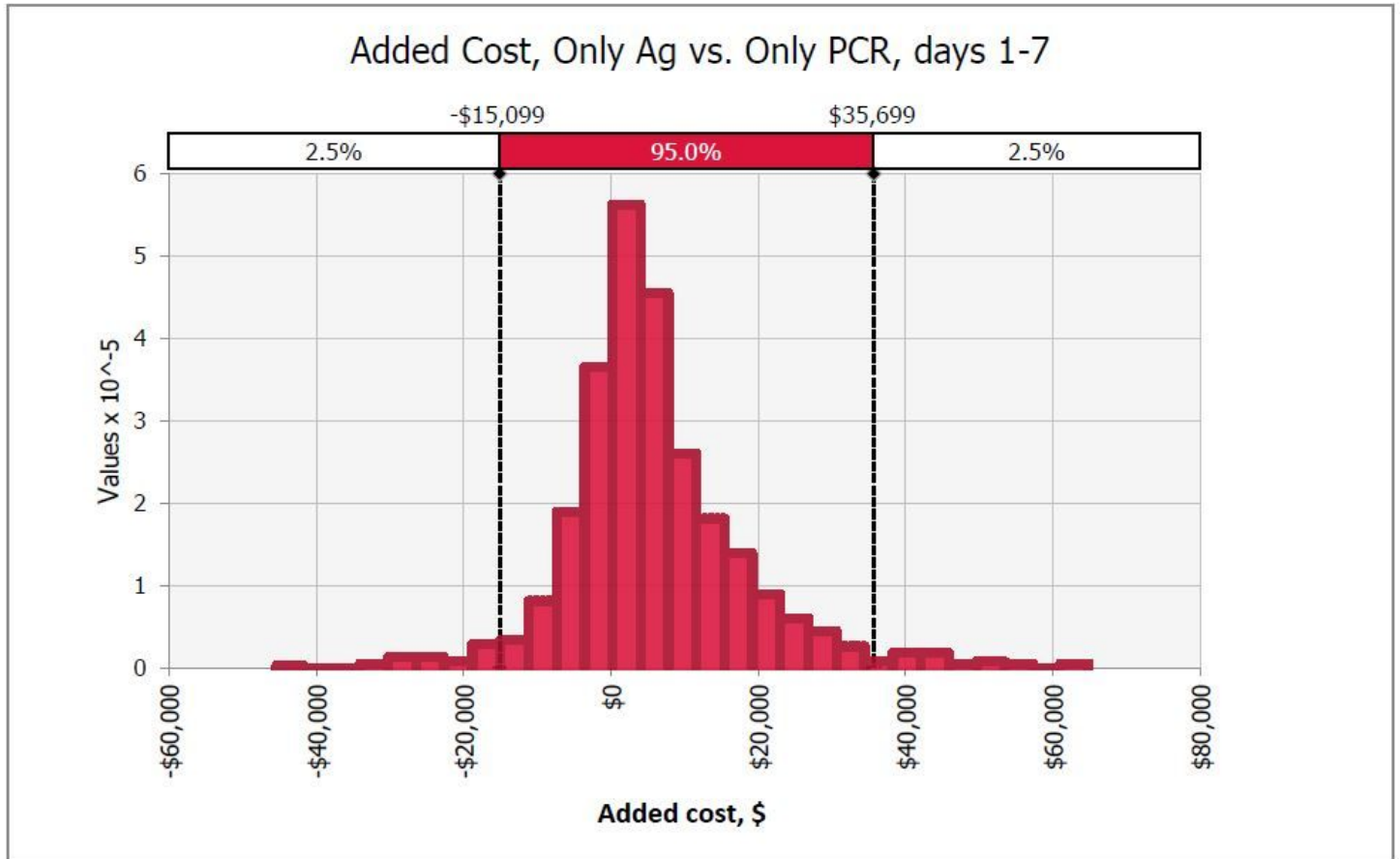


Figure 3

Probability distribution of difference in net costs with Ag vs. PCR-only testing in early clinical disease, days 1-7. PCR screening has fewer net costs than Ag testing in 26% of simulations.

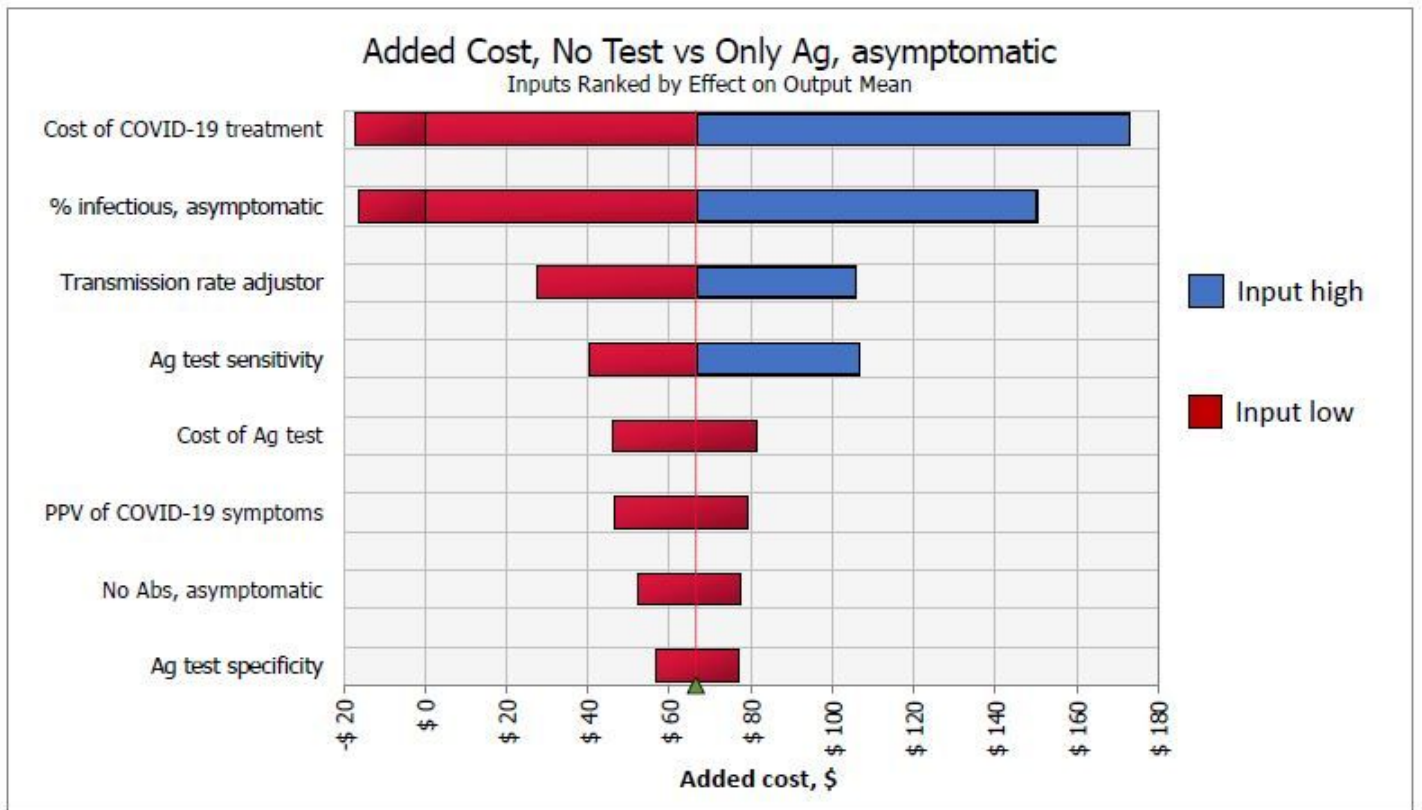


Figure 4

One-way sensitivity analyses on net costs of no test vs. Ag testing among asymptomatic HCWs. Inputs ranked by effect on output mean.

Supplementary Files

This is a list of supplementary files associated with this preprint. Click to download.

- [S2File.docx](#)
- [S1File.docx](#)