

Cognition and Behavior

Unanticipated Stressful and Rewarding Experiences Engage the Same Prefrontal Cortex and Ventral Tegmental Area Neuronal Populations

Alberto Del Arco,^{1,2} Junchol Park,³ and Bitá Moghaddam⁴<https://doi.org/10.1523/ENEURO.0029-20.2020>

¹Health and Exercise Science Department, School of Applied Sciences, University of Mississippi, Oxford, MS 38677, ²Department of Neurobiology and Anatomical Sciences, School of Medicine, University of Mississippi Medical Campus, Jackson, MS 29316, ³Janelia Research Campus, Howard Hughes Medical Institute, Ashburn, VA 20147, and ⁴Behavioral Neuroscience Department, Oregon Health and Science University, Portland, OR 97239

Abstract

Brain networks that mediate motivated behavior in the context of aversive and rewarding experiences involve the prefrontal cortex (PFC) and ventral tegmental area (VTA). Neurons in both regions are activated by stress and reward, and by learned cues that predict aversive or appetitive outcomes. Recent studies have proposed that separate neuronal populations and circuits in these regions encode learned aversive versus appetitive contexts. But how about the actual experience? Do the same or different PFC and VTA neurons encode unanticipated aversive and appetitive experiences? To address this, we recorded unit activity and local field potentials (LFPs) in the dorsomedial PFC (dmPFC) and VTA of male rats as they were exposed, in the same recording session, to reward (sucrose) or stress (tail pinch) spaced 1 h apart. As expected, experience-specific neuronal responses were observed. Approximately 15–25% of single units in each region responded by excitation or inhibition to either stress or reward, and only stress increased LFP theta oscillation power in both regions and coherence between regions. But the largest number of responses (29% dmPFC and 30% VTA units) involved dual-valence neurons that responded to both stress and reward exposure. Moreover, the temporal profile of neuronal population activity in dmPFC and VTA as assessed by principal component analysis (PCA) were similar during both types of experiences. These results reveal that aversive and rewarding experiences engage overlapping neuronal populations in the dmPFC and the VTA. These populations may provide a locus of vulnerability for stress-related disorders, which are often associated with anhedonia.

Key words: depression; dopamine; ensemble activity; reward; stress; theta oscillations

Significance Statement

Animals must recognize unexpected harmful and rewarding events to survive. How the brain represents these competing experiences is not fully understood. Two interconnected brain regions implicated in encoding both rewarding and stressful events are the dorsomedial prefrontal cortex (dmPFC) and the ventral tegmental area (VTA). In either region, separate neurons and associated circuitry are assumed to respond to events with positive or negative valence. We find, however, that a significant subpopulation of neurons in dmPFC and VTA encode both rewarding and aversive experiences. These dual-valence neurons may provide a computational advantage for flexible planning of behavior when organisms face unexpected rewarding and harmful experiences.

Received January 28, 2020; accepted April 30, 2020; First published May 8, 2020.

The authors declare no competing financial interests.

Author contributions: A.D.A. and B.M. designed research; A.D.A. performed research; A.D.A. and J.P. analyzed data; A.D.A. and B.M. wrote the paper.

Introduction

Acute aversive and rewarding events are motivationally salient experiences that may change brain function and behavior (Ulrich-Lai and Herman, 2009; Hermans et al., 2014; Ferenczi et al., 2016; Ye et al., 2016). These experiences can produce opposite behavioral outcomes including promoting avoidance after an aversive experience and approach behavior after a rewarding experience (Bissonette et al., 2014; Gentry et al., 2019), which suggest that they engage different neurophysiological responses in the brain. At the same time, however, they promote similar behaviors such as increased vigilance and motivation to act. The neurophysiological response to both aversive and rewarding stimuli is altered in psychiatric disorders (Kalivas and Volkow, 2005; Lederbogen et al., 2011; Stanton et al., 2019), suggesting common neurobiological substrates. In particular, stress-related disorders such as major depressive disorder are commonly associated with anhedonia and impaired ability to enjoy experiences that were once rewarding (Stanton et al., 2019).

Two principal brain regions that have been implicated in processing aversive and rewarding experiences are the prefrontal cortex (PFC) and the ventral tegmental area (VTA; Thierry et al., 1976; Abercrombie et al., 1989; Taber and Fibiger, 1997; Kobayashi et al., 2006). Acute stressors and rewarding events increase the release of dopamine (DA), noradrenaline and the expression of early genes in the PFC (i.e., c-fos; Thierry et al., 1976; Smith et al., 1997; Weinberg et al., 2010; Butts et al., 2011). Stress and expectation of a rewarding outcome also increase the activity of PFC neurons (Jackson and Moghaddam, 2006; Horst and Laubach, 2013). In the VTA, DA neurons are famously activated by reward (Schultz, 1998; Steinberg et al., 2013), and while VTA DA neurons are both activated and inhibited in aversive contexts (Anstrom and Woodward, 2005; Bromberg-Martin et al., 2010; Holly and Miczek, 2016; Moriya et al., 2018), stress robustly increases the release of DA in all VTA terminal regions including ventral striatum, amygdala, and PFC (Abercrombie et al., 1989; Inglis and Moghaddam, 1999). But while it is well accepted that both stress and reward activate these regions, it remains an open question whether the same neural populations within each region represent events with opposing valence.

Recent recording studies have compared the neuronal response to aversive and rewarding contexts and show that specific PFC and VTA (DA and non-DA) circuits and neuronal populations can be activated and/or inhibited differently by either context (Kim et al., 2010; Cohen et al., 2012; Caracheo et al., 2018; Vander Weele et al., 2018; de

Jong et al., 2019). Yet most of these studies involve Pavlovian or operant conditioning paradigms where a trained animal responds to an expected outcome. While the results of these studies are important for understanding how expectation of an impending appetitive versus aversive event are encoded after learning, they do not address how these regions respond to the actual experience of an unexpected appetitive versus aversive event.

The present study was designed to compare neuronal responses to acute, unanticipated rewarding and aversive experiences in the dorsomedial PFC (dmPFC) and the VTA. Neuronal activity spanning individual neurons, neuronal populations and local field potentials (LFP) were recorded simultaneously in both areas of the brain. Critically, animals were exposed to both rewarding and aversive experiences in the same recording sessions so that we could reliably compare their effects on the same neurons across time. Food (sucrose) exposure (15 min) and tail pinch (15 min), spaced 1 h apart, were used as rewarding and aversive experiences, respectively. We find that while, in both regions, some populations of neurons respond only to one experience, a significant proportion of neurons respond to both types of experiences.

Materials and Methods

Animals

Adult male Long Evans rats weighing 325–360 g ($n = 10$) were housed in pairs on a 12/12 h light/dark cycle (lights on at 7 P.M.). All experiments were performed during the dark active phase of the cycle. All procedures were conducted in accordance with the University of Pittsburgh's Institutional Animal Care, the University of Mississippi Animal Review Board and Use Committee, and the National Institute of Health's Guide for the Care and Use of Laboratory Animals.

Surgery and electrophysiology procedure

Chronic microelectrode arrays were implanted under isoflurane anesthesia in the dmPFC (prelimbic; AP = +3.0, L = 0.7, V = -4, from bregma) and the VTA (AP = -5.3, L = 0.5–1.1, V = -8.3, from bregma) of rats (Del Arco et al., 2017; Park and Moghaddam, 2017; Fig. 1A,B). Microelectrode arrays consisting of eight polyimide-insulated Tungsten wires (50 μ m) made in-house were implanted in the VTA. Microelectrode arrays consisting of eight or sixteen Teflon-insulated stainless-steel wires (50 μ m; NB Labs) were implanted in the dmPFC. Electrode arrays were secured onto the skull with dental cement using six screws as anchors. A silver wire was connected to one of the screws used as a ground.

Single units were recorded by a unity-gain field-effect transistor head stage and lightweight cabling, which passed through a commutator to allow freedom of movement in the test chamber (Plexon). Recorded neuronal activity was amplified at 1000 \times gain and digitized at 40 kHz by the recorder software (Plexon). Single-unit activity was digitally high-pass filtered at 300 Hz, and LFPs were low-pass filtered at 125 Hz (Plexon). Single units were isolated in Offline Sorter (Plexon) using a combination of manual

This work was supported by the School of Applied Sciences, University of Mississippi (A.D.A.) and by PHS Awards MH048404 (to B.M.) and MH115027 (to B.M.).

Correspondence should be addressed to Alberto Del Arco at adelarco@olemiss.edu.

<https://doi.org/10.1523/ENEURO.0029-20.2020>

Copyright © 2020 Del Arco et al.

This is an open-access article distributed under the terms of the Creative Commons Attribution 4.0 International license, which permits unrestricted use, distribution and reproduction in any medium provided that the original work is properly attributed.

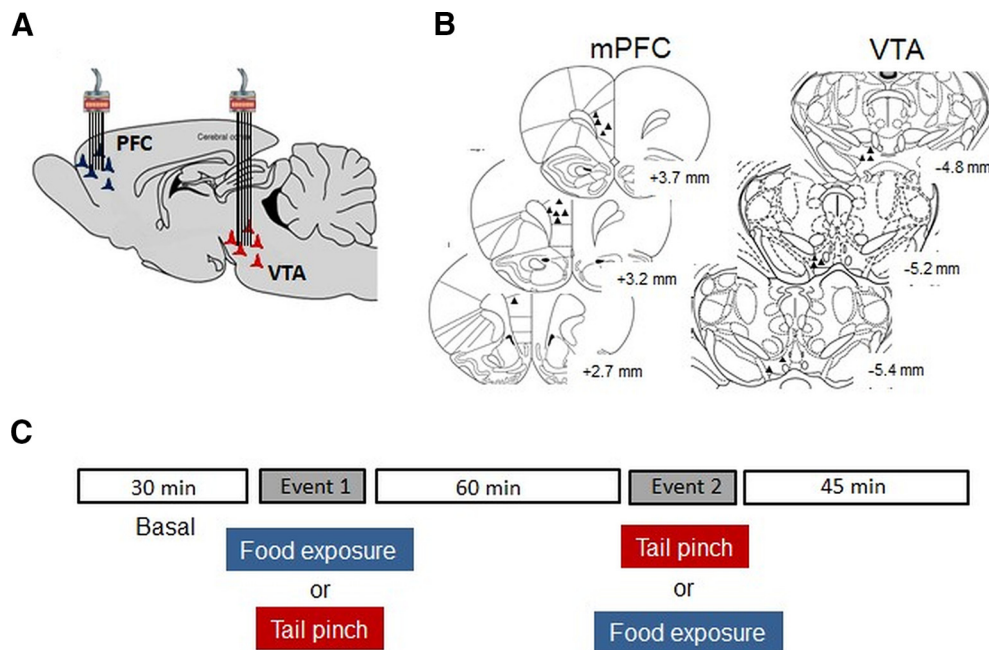


Figure 1. Electrode location and experimental protocol. **A**, Schematic of electrode arrays implantation for recording simultaneously in the dmPFC and the VTA. **B**, Representation of the electrode's placement in the dmPFC (prelimbic) and the VTA of the rat. **C**, Protocol performed during the recording sessions.

and semiautomatic sorting techniques (Homayoun and Moghaddam, 2007).

Tail pinch and food reward exposure

Animals were allowed to recover from surgery for at least one week. They were then acclimated to the recording cable in the testing cage for 2–3 d before the recording started. During this time, animals were individually housed and mildly food-restricted (15 g of standard chow per day). Habituation included exposing animals to sugar pellets in the testing cage at least 1 d before recording started.

Recording sessions lasted 165 min (Fig. 1). After 30 min of baseline recording, animals were exposed to food (sucrose) for 15 min and, 60 min later, to tail pinch for 15 min. To control for the order of exposure to these salient events, four animals received tail pinch before food in a second recording session. Tail pinch was performed using a foam-covered cloth pin attached 2 cm from the base of the tail. The foam was used to avoid excessive pressure on the tail. Previous studies have shown that 15-min tail pinch increases corticosterone concentrations and impairs executive functions (Butts et al., 2011, 2013). Food exposure involved giving ad lib access to sugar pellets (dustless sugar pellets, 45 mg; Bio-Serv) placed in a Petri dish in the test cage. All animals consumed sugar pellets during food exposure (45 ± 8 pellets per session, averaged across eight recording sessions).

Histology

After completion of experiments, rats were anesthetized with chloral hydrate (400 mg/kg, i.p.) and perfused with saline and 4% buffered formalin. Fixed brain sections were stained

with cresyl violet, and electrode-tip placements were verified using a light microscope. Only data with correct placements within the prelimbic region of the dmPFC and the VTA were included in electrophysiological analyses (Fig. 1B).

Electrophysiological data and statistical analysis

Electrophysiological data were analyzed with custom-written scripts, executed in MATLAB (MathWorks), along with the Chronux toolbox (<http://chronux.org/>). Units were classified as activated or inhibited by sucrose exposure or tail pinch in 60-s bins if their average absolute activity was $Z > 2$ or $Z < -2$, respectively. The average across time bins was computed to compare the number of units activated or inhibited by both events during the event time (15 min; 15 bins) and postevent time (15 min beginning after the end of the event; 15 bins). Units were selected as responsive when either five consecutive bins or at least seven non-consecutive bins were significant during the 15-min event period (sucrose exposure or tail pinch). Significant bins were detected by using Student paired t tests to compare the average basal firing rate to 60-s bins during sucrose exposure and tail pinch. The response of each unit was calculated by the normalized (z score) average firing rate of significant bins during the event. Putative DA and non-DA units were identified using the firing rate (< 12 Hz for DA) and waveform duration (> 1.2 ms for DA) as criteria (Kim et al., 2010; Park and Moghaddam, 2017). The DA neuron waveform patterns were consistent with the ontogenetically identified DA neurons in the VTA of the same strain of rats (Lohani et al., 2019).

Unit pairs in the dmPFC and the VTA were detected by correlating the firing rate of units recorded during the same sessions (Narayanan and Laubach, 2009; Kim et al.,

2012). Specifically, a Pearson's correlation of the normalized firing rate (1-min bins) for each pair of units was calculated in the time period of 35 min (35 bins) centered on the event (10-min baseline + 15-min stimulus + 10-min poststimulus). In the VTA, correlations were calculated in within the group of putative DA and non-DA units. The Pearson correlation coefficient served to detect significant unit pairs; $p < 0.01$ was considered significant.

The principal component analysis (PCA) was performed to find common sources of variance in the temporal patterns of firing rate over the population of units (Narayanan and Laubach, 2009). A different matrix was built for each event containing the normalized (z score) firing rate of each unit (rows) and 60-s time bins (columns). The *pca* function from MATLAB was used to obtain coefficients and scores. Coefficients represent the principal components (PCs) and the scores represent the projection of the PCs for every unit. The variance explained by each PC was also obtained by this approach. The scores of every unit were represented in a 2-d space comprising the top two PCs (PC1 and PC2) to visually identify potential clusters for food reward exposure and tail pinch population's activity (Figs. 2H, 3H). Also, the PCs that explained the maximal variance (PC1 and PC2) were represented to visualize the temporal profile of the population activity (Figs. 2E–G, 3E–G).

LFPs power spectral densities were quantified using the *chronux* routine *mtspecgramc*. The raw LFP data were split in 10-s windows inside which Fourier transform computation was performed using a sliding time window of 4 s, with 2-s steps. A multitaper approach was used because it improves spectrogram estimates when dealing with non-infinite time series data (Mitra and Pesaran, 1999). Windows with clipping artifacts or LFP values higher and lower than $3 \times$ SD of the mean of the total signal were excluded. Spectral data were normalized (z score) against the average of the baseline period, and each animal's data were averaged together to yield group mean spectral data. The magnitude squared coherence between time series recorded from dmPFC and VTA was calculated in the same moving window using the *chronux* routine *cohgramc*. Each animal's normalized spectral power and coherence during each event was used for statistical comparisons.

χ^2 tests were used to test whether reward (sucrose exposure) or stress (tail pinch) differentially change the proportion of units and unit pairs responding to these events. Student paired *t* test was used to compare the basal firing rate of neurons. One-way and two-way ANOVAs were used to compare the LFP power and coherence values during the two events. The statistical analysis and results are depicted in Table 1. Units and LFP data recorded in two sessions were pooled together for the analysis. This was done because the order of events in the second recording session did not change significantly the proportion of unresponsive neurons or those that responded to both events and only one event (see Results).

Results

dmPFC and VTA neuronal response to reward and stress

Neuronal population

Both food (sucrose) and tail pinch bidirectionally modulated the neuronal activity of PFC and VTA. Figures 2, 3 show the neuronal response to both experiences in the dmPFC and the VTA, respectively. In both figures, the top graphs are heat plots that represent the changes in the firing rate (z scores) during sucrose exposure and tail pinch (Figs. 2A, 3A) or tail pinch and sucrose exposure (Figs. 2B, 3B), performed in the same recording session. The middle and bottom graphs represent the significant proportion of units that were activated and inhibited during both events (Figs. 2C,D, 3C,D) and the PCA analyses (Figs. 2E–H, 3E–H).

In the dmPFC (104 units, $n = 10$), the basal firing rate of neurons was 6.47 ± 0.59 Hz before sucrose exposure and 6.41 ± 0.53 Hz before tail pinch (as the average of the 10 min before each event). These values were not significantly different ($t_{(103)} = 0.27$, $p = 0.784$, paired *t* test). Both events activated more units than inhibited units (Fig. 2), but there were no significant differences between sucrose exposure and tail pinch in the average proportion of units activated or inhibited during the event time ($\chi^2_{(2)} = 0.11$, $p > 0.1$, average across time bins 15–30 min) or during the postevent time ($\chi^2_{(2)} = 0.22$, $p > 0.1$, average across time bins 30–45 min).

In the VTA (61 units, $n = 8$), we classified units as putative DA ($n = 38$; 62%) and non-DA ($n = 23$; 38%) subtypes (see Materials and Methods). The basal firing rate of VTA neurons before sucrose was 10.16 ± 1.74 Hz (DA = 4.20 ± 0.32 Hz; non-DA = 20.02 ± 3.82 Hz) and before tail pinch was 9.45 ± 1.60 Hz (DA = 3.89 ± 0.31 Hz; non-DA = 18.63 ± 3.50 Hz; as the average of the 10 min before each event). There were no significant differences between these values ($t_{(22)} = 1.36$, $p = 0.186$, paired *t* test). The basal firing rate of DA units was slightly lower before tail pinch compared with sucrose ($t_{(37)} = 2.08$, $p = 0.044$, paired *t* test). Both events activated more units than inhibited units (Fig. 3), but similar to dmPFC, there were no significant differences between sucrose exposure and tail pinch in the average proportion of units activated or inhibited during the event time ($\chi^2_{(2)} = 1.93$, $p > 0.1$, average across time bins 15–30 min) or during the postevent time ($\chi^2_{(2)} = 1.02$, $p > 0.1$, average across time bins 30–45 min).

Because similar proportion of units activated, inhibited, or unresponsive were observed in the dmPFC and the VTA when the order of tail pinch and reward exposure was changed (Figs. 2B, 3B), units recorded in both sessions were pooled together for the above analyses. Specifically, in the dmPFC (36 units, $n = 4$; Fig. 2B), during tail pinch, 29% of units (vs 29%) were activated and 5% (vs 8%) inhibited ($\chi^2_{(2)} = 0.08$, $p > 0.1$, average across time bins 15–30 min); during reward exposure 36% of units (vs 30%) were activated and 10% (vs 6%) inhibited ($\chi^2_{(2)} = 0.23$, $p > 0.1$, average across time bins 15–

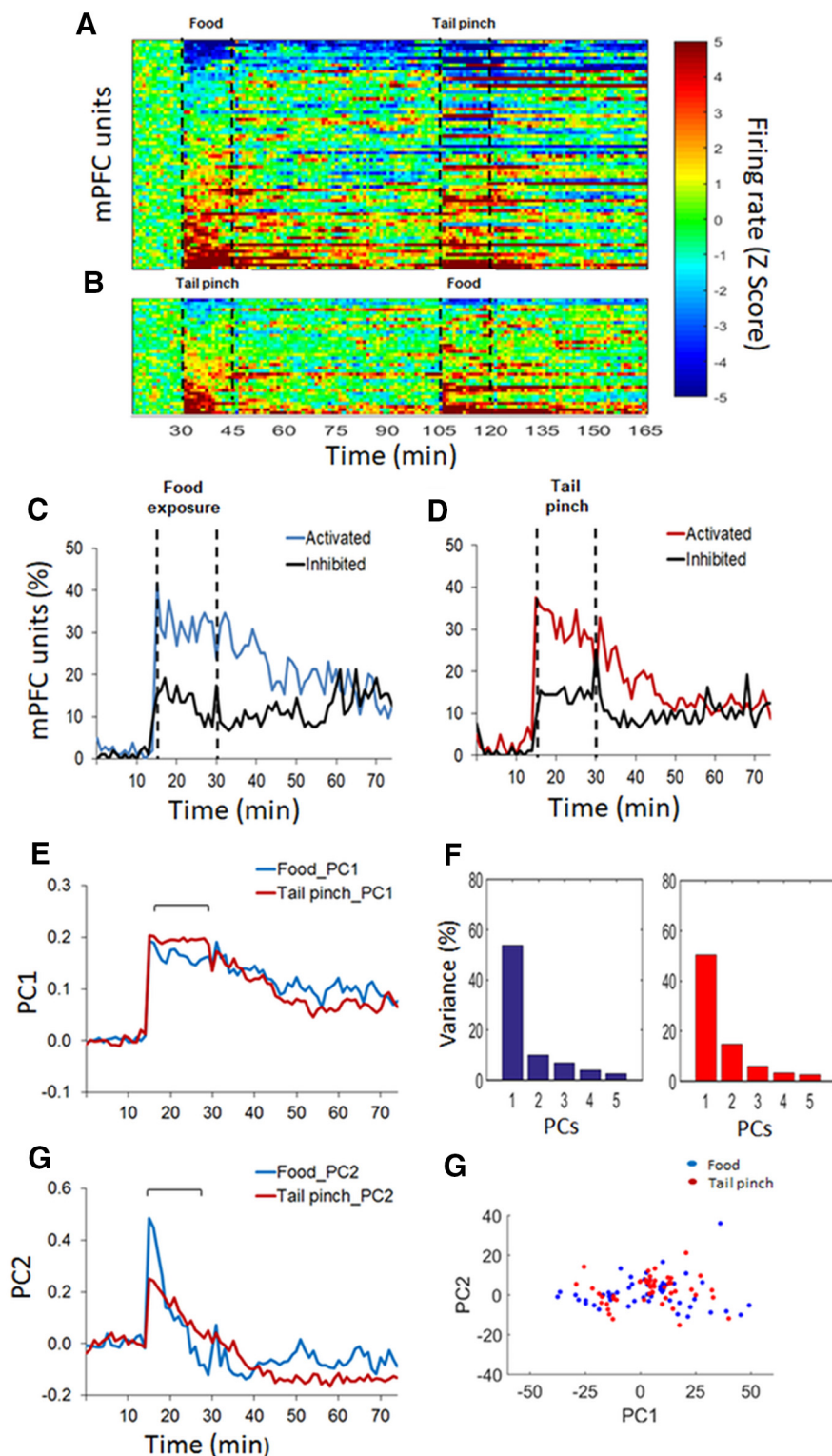


Figure 2. dmPFC population activity during rewarding and stressful events. **A, B**, Heat plots represent the baseline normalized firing rate for single units. Each row is the activity of a single unit in 60-s time bins aligned to the first event, sucrose food exposure (**A**) or tail pinch (**B**; 15 min, dashed lines); and sorted from lowest to highest average normalized firing rate. **C, D**, Time course of single unit's activation and inhibition during sucrose food exposure (**C**) and tail pinch (**D**). All units represented in **A, B** are included. The percentage of units was categorized as activated or inhibited based on whether their averaged activity by 60-s time bins was significantly different from baseline activity. **E–G**, Temporal profile of the population activity associated with the top two principal components (PC1 and PC2) for sucrose food exposure and tail pinch. **F**, Variance explained by the top five principal components for both events. **H**, Representation of single units in the 2-d space according to the top two principal components.

30 min). Similar results were found in the VTA (13 units, $n = 4$; Fig. 3B). During tail pinch, 31% of units (vs 44%) were activated and 5% (vs 6%) inhibited ($\chi^2_{(2)} = 0.70$, $p > 0.1$, average across time bins 15–30 min); during reward exposure, 19% of units (vs 27%) were activated and 10% (vs 2%) inhibited ($\chi^2_{(2)} = 0.33$, $p > 0.1$, average across time bins 15–30 min).

Next, a PCA was performed to identify common sources of variance in the temporal pattern of firing rate during both events (Narayanan and Laubach, 2009). The temporal pattern of the population activity as represented by the top two PCs (PC1 and PC2) was similar between sucrose exposure and tail pinch in both areas of the brain (Figs. 2E–G, 3E–G). The variance explained by the top five PCs is shown in Figures 2F, 3F. The projection of each neuron in the 2-d PCs space (PC1 and PC2) is consistent with the same pattern of population activity during both sucrose exposure and tail pinch since all units can be included in one cluster (Figs. 2H, 3H).

Single units

Figure 4A,B shows the response of every unit to food (sucrose) exposure compared with the response to tail pinch in the dmPFC and VTA, respectively. These graphs show that units in both areas of the brain are activated and inhibited by both events as well as activated or inhibited by only one of them. Figure 5C,D shows the percentage of dmPFC and VTA units that responded to both sucrose exposure and tail pinch or only one of these events (paired t test, at $\alpha = 0.05$; see Materials and Methods). As shown, a high number of units responded to both events in the dmPFC [30 (29%)] and the VTA [18 (30%)]. In the dmPFC, the number of units that responded specifically to sucrose or tail pinch was the same [20 (20%)]. In the VTA, there were more units that responded specifically to tail pinch [17 (28%)] compared with sucrose exposure [9 (15%)] with similar responses from putative DA and non-DA units (Fig. 5E). Of note, the vast majority of VTA units responding to tail pinch is consistent with previous studies showing that VTA DA and non-DA cells increase their activity in response to aversive stimuli (Brischoux et al., 2009; Thierry et al., 1976; Morales and Margolis, 2017). The percentage of units that did not respond to any of the events was similar in the dmPFC [33 (32%)] and the VTA [17 (29%)]. There were no significant differences in the proportion of units that responded to sucrose exposure and tail pinch or only to one of the events, in the dmPFC ($\chi^2_{(3)} = 4.88$, $p > 0.1$) and the VTA ($\chi^2_{(3)} = 3.50$, $p > 0.1$). Similarly, there were no differences in the proportion of DA and non-DA units in the VTA that responded to both events and to only one of the events ($\chi^2_{(3)} = 1.85$, $p > 0.1$; Fig. 5F).

Similar responses to both salient events were observed in the dmPFC when the order of tail pinch and food exposure was changed (36 units, $n = 4$; $\chi^2_{(3)} = 1.26$, $p > 0.10$). There were similar proportions of unresponsive neurons (38% vs 35%), neurons that responded to both events (22% vs 17%), only to food (11% vs 20%) or only to tail pinch (27% vs 27%). The same results were found in the VTA (13 units, $n = 4$; $\chi^2_{(3)} = 6.90$, $p > 0.05$). Units recorded in both sessions were pooled together for the above analyses.

Unit pairs

To evaluate whether food (sucrose) exposure and tail pinch change the functional interaction (i.e., coordinated activity) between neurons in the dmPFC and the VTA, we analyzed the correlation between the firing rate of pairs of units recorded in the same sessions (Table 2). Previous studies show that brief appetitive and aversive stimuli during conditioning learning can modulate the functional connectivity between neurons in the VTA (Kim et al., 2012). This study shows a significant proportion of unit pairs during both events in the dmPFC and the VTA. In the dmPFC, there were 144 and 166 significant pairs during sucrose exposure and tail pinch, respectively, out of 413 possible pairs. In the VTA, there were 68 and 82 significant pairs during sucrose exposure and tail pinch, respectively, out of 221 possible pairs. As shown in Table 2, there were no significant differences in the proportion of significant unit pairs that overlapped during both events or emerged specifically during one of the events (food exposure or tail pinch), in the dmPFC ($\chi^2_{(2)} = 4.44$, $p > 0.1$) and the VTA ($\chi^2_{(2)} = 2.44$, $p > 0.1$). These results suggest that both events produced similar coordinated activity among units in both areas of the brain and are consistent with the neuronal population activity results shown above (i.e., PCA).

LFP

To examine whether LFPs mediate neural interactions within, and between, dmPFC and VTA, we analyzed LFP oscillations at different frequencies (from 1 to 40 Hz; bin size 2.5 Hz) and compared the effects of food (sucrose) exposure and tail pinch. A two-way ANOVA (frequency \times event) showed that food exposure and tail pinch produced different effects on LFP oscillations in the dmPFC ($F_{(30,336)} = 1.67$, $p = 0.017$, frequency \times event interaction) and the VTA ($F_{(30,336)} = 2.10$, $p = 0.001$, frequency \times event interaction). Specifically, as shown in Figure 5, tail pinch, but not food exposure, increased the power of low theta oscillations (2–5 Hz) in the dmPFC ($F_{(2,21)} = 7.59$, $p = 0.003$, one-way ANOVA) and the VTA ($F_{(2,21)} = 4.44$, $p = 0.024$, one-way ANOVA; as the average 2–5 Hz for 20 min after the beginning of the events). Furthermore, theta oscillations were significantly synchronized between the dmPFC and the VTA during tail pinch ($F_{(2,21)} = 4.39$, $p = 0.025$, one-way ANOVA) compared with food exposure and baseline (as the average 2–5 Hz for 20 min after the beginning of the events). Overall, these results show that tail pinch, but not food exposure, increases theta oscillations and coherence between the dmPFC and the VTA.

Discussion

In the same recording session, we compared the effects of unanticipated aversive and rewarding experiences on dmPFC and VTA single units as well as LFP oscillations. We find experience-specific changes in LFP oscillations and in the activity of neuronal subpopulations. There were, however, no global changes in the population activity or its temporal profile that characterized each type of experience. In fact, the largest proportions of neurons in

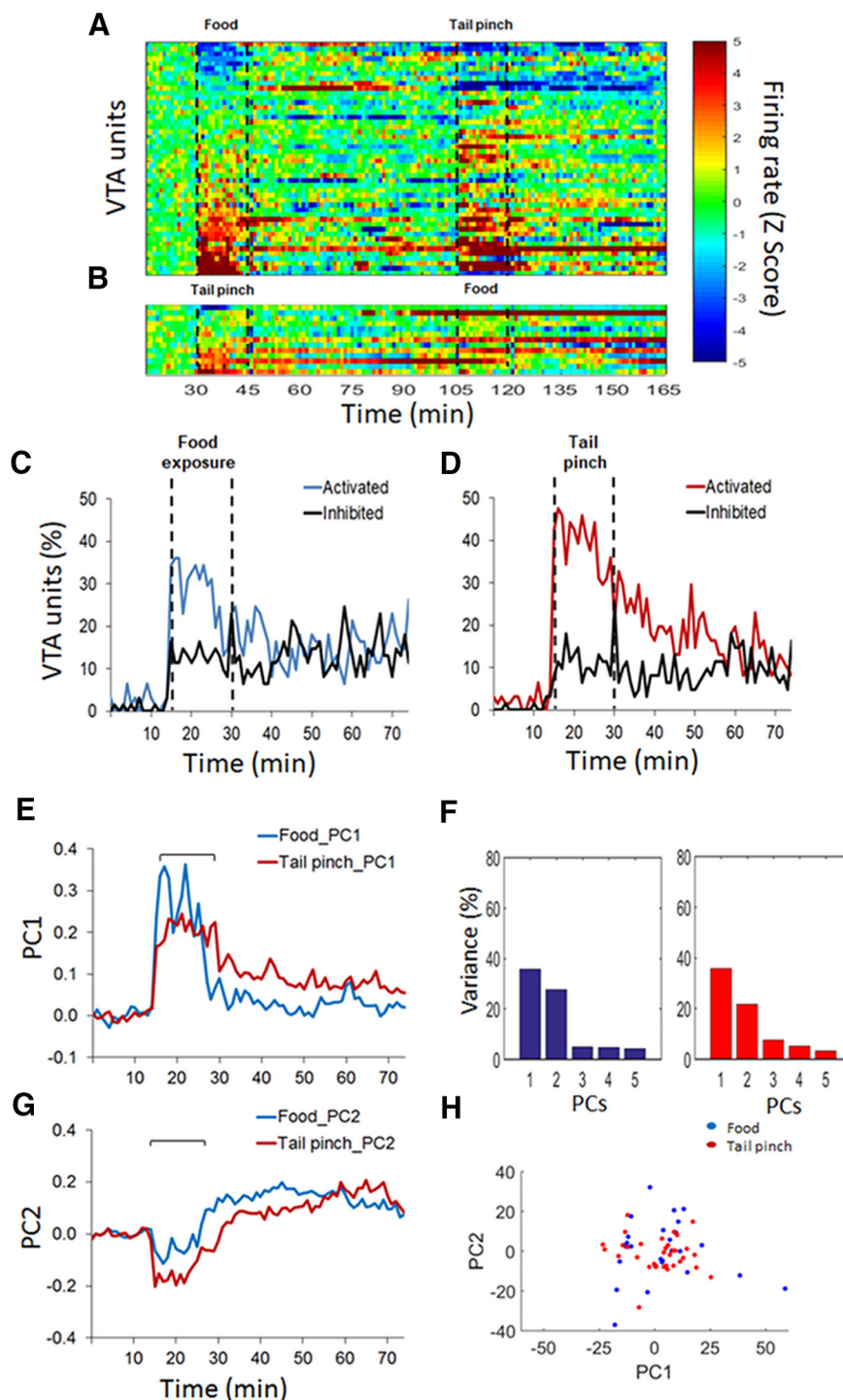


Figure 3. VTA population activity during rewarding and stressful events. **A, B**, Heat plots represent the baseline normalized firing rate for single units. Each row is the activity of a single unit in 60-s time bins aligned to the first event, sucrose food exposure (**A**) or tail pinch (**B**; 15 min, dashed lines), and sorted from lowest to highest average normalized firing rate. **C, D**, Time course of single unit's activation and inhibition during sucrose food exposure (**C**) and tail pinch (**D**). All units represented in **A, B** are included. The percentage of units was categorized as activated or inhibited based on whether their averaged activity by 60-s time bins was significantly different from baseline activity. **E–G**, Temporal profile of the population activity associated with the top two principal components (PC1 and PC2) for sucrose food exposure and tail pinch. **F**, Variance explained by the top five principal components for both events. **H**, Representation of single units in the 2-d space according to the top two principal components.

Table 1: Statistical results according to brain area, data analyzed, and test used

Neuronal population	dmPFC	Basal firing rate (food vs stress) Units activated/inhibited (food vs stress)	Paired <i>t</i> test χ^2	$t_{(103)} = 0.27, p = 0.784$ $\chi^2_{(2)} = 0.11, p > 0.1$ (event time) $\chi^2_{(2)} = 0.22, p > 0.1$ (postevent time)
	VTA	Basal firing rate (food vs stress) Units activated/inhibited (food vs stress)	paired <i>t</i> test χ^2	$t_{(37)} = 2.08, p = 0.044$ (DA) $t_{(23)} = 1.36, p = 0.186$ (non-DA) $\chi^2_{(2)} = 1.93, p > 0.1$ (event time) $\chi^2_{(2)} = 1.02, p > 0.1$ (postevent time)
Single units	dmPFC	Units responses	χ^2	$\chi^2_{(3)} = 4.88, p > 0.1$
	VTA	Units responses DA vs non-DA	χ^2 χ^2	$\chi^2_{(3)} = 3.50, p > 0.1$ $\chi^2_{(3)} = 1.85, p > 0.1$
Unit pairs	dmPFC	Units pairs	χ^2	$\chi^2_{(2)} = 4.44, p > 0.1$
	VTA	Units pairs	χ^2	$\chi^2_{(2)} = 2.44, p > 0.1$
LFP	dmPFC	LFP power (food vs stress)	Two-way ANOVA	$F_{(15,336)} = 6.77, p < 0.001$
			frequency effect	$F_{(2,336)} = 0.33, p > 0.1$
	VTA	LFP power (food vs stress)	event effect	$F_{(30,336)} = 1.67, p = 0.017$
			frequency \times event	
dmPFC-VTA	LFP coherence	One-way ANOVA	$F_{(2,21)} = 7.59, p = 0.003$	
		Two-way ANOVA	$F_{(15,336)} = 6.38, p < 0.001$	
		frequency effect	$F_{(2,336)} = 11.54, p < 0.001$	
		event effect	$F_{(30,336)} = 2.10, p = 0.001$	
		frequency \times event		
		One-way ANOVA	$F_{(2,21)} = 4.44, p = 0.024$	
		One-way ANOVA	$F_{(2,21)} = 4.39, p = 0.025$	

either region responded to both experiences. These results suggest that while separate networks may encode aversive and rewarding experiences, there is a considerable population of dual-valence dmPFC and VTA neurons that encode both experiences. This overlap may be significant in the context of organizing behaviors that are similarly affected by stressful and rewarding events, and in psychiatric disorders where both negative and positive valence systems are affected.

Same neurons in the dmPFC and VTA respond to unanticipated aversive and rewarding experiences

The PFC and the VTA are components of negative and positive valence systems. Both regions are sensitive to acute stressors (Jackson and Moghaddam, 2006; Holly and Miczek, 2016), and both are implicated in stress-related and anxiety-related brain disorders (Holmes and Wellman, 2009; Chaudhury et al., 2013; Tye et al., 2013; Cha et al., 2014; Arnsten, 2015) while also processing reward-related events (Schultz, 1998; Kobayashi et al., 2006; Cohen et al., 2012; Horst and Laubach, 2013). Little is known, however, about the relative response of the same PFC or VTA neurons to stressful versus rewarding experiences. To address this void, we compared the effect of exposure to a reward (sucrose) in mildly food restricted animals with an aversive experience (tail pinch) on dmPFC and VTA single units during the same recording session. Our results that stress and reward can have a mixed inhibitory and excitatory effects on unit activity, especially on dmPFC cells, is in general agreement with previous literature (Anstrom and Woodward, 2005; Jackson and

Moghaddam, 2006; Kobayashi et al., 2006; Brischoux et al., 2009; Bromberg-Martin et al., 2010). Critically, however, the proportion of neurons activated/inhibited and the temporal profile of these changes were not different between the rewarding and aversive experiences. Moreover, the global activity of the neuronal population during and after either experience was similar as evaluated by PCA. These results demonstrate that there is overlap in the neuronal representation of aversive and rewarding experiences in either region that may be masked if the relationship was assessed by only measuring global changes in the population activity such as those measured by fiber photometry.

Approximately 30% of neurons in the dmPFC and the VTA encoded the experience of animals receiving food reward or the tail pinch stressor. This substantial proportion of neurons in the dmPFC and the VTA that encode opposing valence experiences (dual-valence neurons) could function as mixed selectivity neurons. Mixed selective neurons have been implicated in processing different sensory or motor variables and can facilitate contextual flexibility during cognitive and motor behavior (Rigotti et al., 2013; Kobak et al., 2016; Ma et al., 2016). Mixed selective neurons are prevalent in the PFC (Rigotti et al., 2013; Grunfeld and Likhtik, 2018). While VTA neurons are often assumed to be specialized, recent studies have suggested that clusters of DA neurons respond to a whole array of variables in addition to reward (Engelhard et al., 2019). Dual-valence neurons in the dmPFC and the VTA could fine-tune adequate behavioral outcomes depending on the emotional context (i.e., degree of averseness; Matsumoto et al., 2016; Park and Moghaddam, 2017; Berridge, 2019). Alternatively, dual-

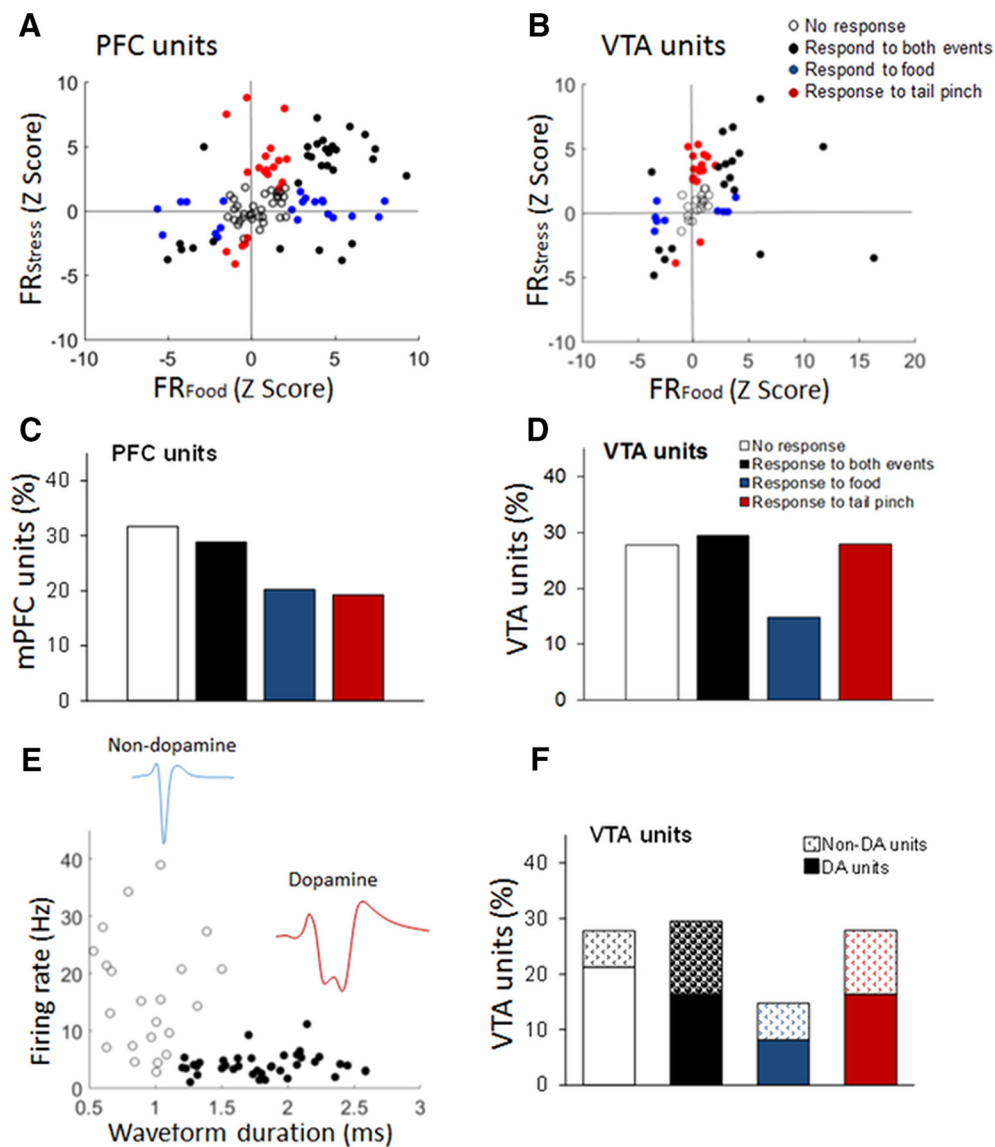


Figure 4. dmPFC and VTA single units respond to rewarding and stressful events. **A, B**, Representation of single units according to their response to sucrose food exposure and tail pinch in the dmPFC (**A**) and the VTA (**B**). The response is the averaged normalized (z score) firing rate (FR) during the event (15 min). **C, D**, Proportion (percentage) of single units that respond to sucrose food exposure and/or tail pinch in the dmPFC (**C**) and the VTA (**D**). **E**, Electrophysiological characterization of VTA units in putative DA and non-DA according to their basal FR and wave form duration. Each point represents one recorded unit. **F**, Proportion of putative DA and non-DA units that respond to sucrose food exposure and tail pinch (overlapped on **D**, bar graph).

valence neurons may facilitate learning by adapting their response to only one type of experience (aversive or rewarding) after repeated exposure (Li et al., 2017). Future studies are needed to establish which common input onto these neurons drives this activity. Possible regions include bed nucleus of the stria terminalis, hypothalamus, and amygdala (Burgos-Robles et al., 2017; Morales and Margolis, 2017; Ch'ng et al., 2018).

Experience-specific response of dmPFC and VTA neurons

Subpopulations of neurons in the dmPFC and the VTA responded selectively to tail pinch or sucrose exposure. These neurons may represent the first building

blocks for conditioned learning (Gore et al., 2015) and may have specific molecular features and input/output projections (Li et al., 2017). This aspect of our results is consistent with recent studies that have identified specific populations in the PFC (Warden et al., 2012; Ye et al., 2016; Rozeske et al., 2018; Vander Weele et al., 2018) and the VTA (Kim et al., 2016; Ye et al., 2016; Morales and Margolis, 2017; de Jong et al., 2019) that respond to rewarding or aversive events. Thus, VTA neurons that receive inputs from the lateral tegmentum and project to the nucleus accumbens respond to rewards while VTA cells that receive inputs from the lateral habenula and project to the PFC respond primarily to aversive stimuli (Lammel et al., 2012). Similarly, PFC

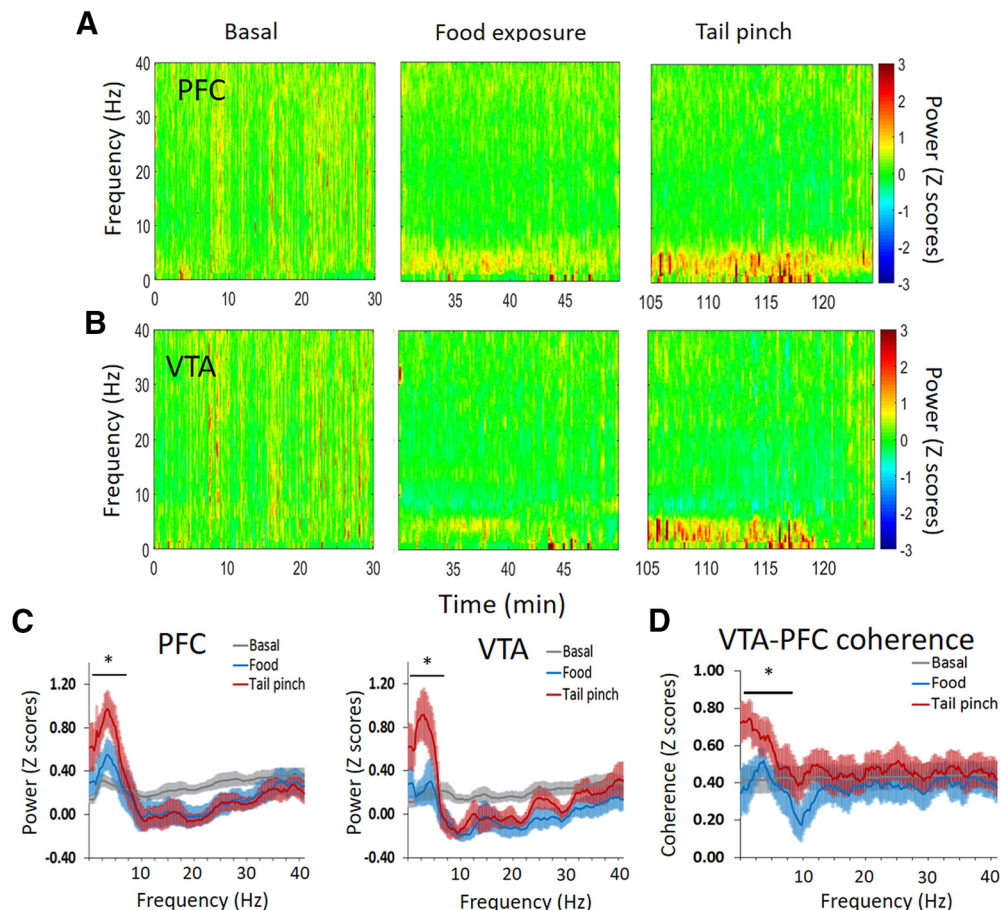


Figure 5. dmPFC and VTA LFP oscillations change during sucrose food exposure and tail pinch. **A, B**, Baseline normalized LFP power spectrum during sucrose food exposure and tail pinch in the dmPFC (**A**) and the VTA (**B**). **C**, Normalized power-spectrum plots comparing both events in the dmPFC and the VTA. **D**, Normalized dmPFC-VTA coherence plots comparing both events, sucrose food exposure and tail pinch; * $p < 0.05$ one-way ANOVA.

neurons that receive inputs from the VTA and project to the periaqueductal gray selectively respond to aversive events and also process avoidance behavior (Vander Weele et al., 2018). Our results expand on these studies by showing that individual neurons as well as neuronal populations respond to prolonged aversive and rewarding experiences in the dmPFC and the VTA.

Aversive experience uniquely engages dmPFC and VTA networks

Tail pinch, but not exposure to reward, increased the power of theta oscillations in both the dmPFC and the

VTA. Furthermore, tail pinch increased the synchronization of VTA-dmPFC theta oscillations (2–5 Hz), which suggests that the response to acute stress requires a stronger functional connectivity between the dmPFC and the VTA (Fries, 2005). Theta Oscillations in the PFC and the VTA, and their potential role in appetitive and aversive processing (Kim et al., 2012; Amarante et al., 2017; Park and Moghaddam, 2017) as well as memory (Benchenane et al., 2011; Fujisawa and Buzsáki, 2011), is still a matter of debate. Recent studies show that theta oscillations in the PFC and limbic-connected areas (i.e., amygdala, hippocampus) contribute to conditioned fear learning and avoidance behavior. Thus, 4-Hz theta oscillations in the PFC-amygdala circuit predicts the expression of fear behavior (i.e., freezing; Karalis et al., 2016). Furthermore, an increase in 8-Hz (and to a lesser extend 4-Hz) theta oscillations promotes avoidance behavior in the elevated plus maze (Padilla-Coreano et al., 2019). Importantly, using optogenetics, this last study also shows a causal role of PFC theta oscillations to induce avoidance behavior through the activation of ventral hippocampus-PFC inputs. In line with these studies, our results suggest that theta oscillations in the VTA-dmPFC circuit contribute to process

Table 2: Proportion of significant unit pairs in the PFC and the VTA

	PFC	VTA (DA/non-DA)
Food exposure	0.35	0.31 (0.21/0.05)
Tail pinch	0.40	0.37 (0.22/0.09)
Food and tail pinch	0.17	0.16 (0.10/0.04)
Only food	0.18	0.15 (0.12/0.01)
Only tail pinch	0.23	0.21 (0.13/0.01)

In parenthesis, unit pairs for DA and non-DA units.

unanticipated stressful experiences and generate innate avoidance responses.

VTA modulates information coding and valence processing in the PFC (Ellwood et al., 2017; Mininni et al., 2018; Lohani et al., 2019; Weele et al., 2019). It is possible that the increased theta oscillations in the dmPFC during tail pinch are produced by a direct modulation from the VTA because selective optogenetic stimulation of DA cells in the VTA can induce PFC oscillations and modulate the activity of PFC neuronal ensembles at different time scales (Lohani et al., 2019). Furthermore, VTA DA inputs in the PFC can regulate the occurrence of prefrontal 4-Hz theta oscillations (Parker et al., 2014) and amplify the response of prefrontal neurons that encode aversive stimuli (Vander Weele et al., 2018). Based on this evidence, we suggest that VTA promotes VTA-dmPFC communication through theta oscillations in response to tail pinch. Importantly, the degree of VTA-dmPFC theta connectivity might depend on contextual information (Park and Moghaddam, 2017) and involve other areas of the brain such as the hippocampus (Fujisawa and Buzsáki, 2011).

Unique features of the present data

Multiple studies have identified specialized populations of PFC and VTA neurons that respond to aversive and rewarding events (Kobayashi et al., 2006; Warden et al., 2012; de Jong et al., 2019). These studies have involved Pavlovian or instrumental conditioning paradigms and therefore provide data on how previously learned aversive or rewarding outcomes, or cues that predict those outcomes, are encoded by these neurons. Most of the previous studies use either fiber photometry to assess population activity or assess neuronal activity in different sessions. They, therefore, do not measure the activity of the same neurons to both stress and reward.

Our study focused on the unanticipated experience of stress and reward. We were able to distinguish separate populations of dual-valence versus experience-specific neurons unrelated to conditioning paradigms. Notwithstanding the importance of encoding learned associations, animals must recognize unexpected aversive and appetitive events to survive. The relatively large proportion of neurons that responded to both experiences shown here may be critical for behavioral flexibility and future learning needed to successfully adapt to dangerous or positive elements in the environment.

Another novel aspect of the data are the selective engagement of the VTA-dmPFC networks by the stressful experience. The change in theta oscillation in the PFC, in coordination with other regions, has been implicated in state anxiety and learned fear (Adhikari et al., 2010; Padilla-Coreano et al., 2019). The present data suggest that engagement of this network reflects an innate (not learned) response to an aversive event.

Caveats

PFC and VTA contain heterogeneous groups of cells. The PFC includes pyramidal cells and multiple types of GABA interneurons (DeFelipe and Fariñas, 1992; Somogyi et al., 1998). The VTA includes DA-containing and GABA-

containing cells, both of which package other neurotransmitters including glutamate (Carr and Sesack, 2000; Nair-Roberts et al., 2008). We did not methodically distinguish between neuron types and indiscriminately recorded from all spontaneously active neurons. In the dmPFC, the low-average firing rate of recorded neurons, and the general inefficiency of our style of electrodes to record from small interneurons, suggest that the majority, if not all, of the recorded neurons were pyramidal cells. In the VTA, we classified neurons based on firing characteristics as putative DA and non-DA. This characterization is consistent with optogenetically tagged DA neurons observed in previous studies (Cohen et al., 2012; Lohani et al., 2019). While we do not claim that this characterization is perfectly accurate, the finding that both DA and non-DA neurons can be activated and inhibited by both aversive and rewarding events is consistent with previous work (Cohen et al., 2012). Furthermore, regardless of the type of cells in either dmPFC or VTA that we recorded, our primary conclusion that same cells respond to both appetitive and aversive experiences holds.

Clinical implications

The gist of our finding is that a subpopulation of dmPFC and VTA neurons encodes both unanticipated aversive and rewarding experiences. These dual-valence neurons may be critical for vulnerability to develop disorders that are manifested, or exacerbated, by stress. These conditions, including mood and anxiety disorders, PTSD, addiction, and schizophrenia, involve symptoms with concomitant malfunction of negative and positive valence systems (Kalivas and Volkow, 2005; Meyer-Lindenberg, 2010; Daviu et al., 2019; Stanton et al., 2019). Animal models relevant to these disorders also suggest an alteration in communication between the PFC and other areas of the brain including the VTA (Cha et al., 2014; Bruchim-Samuel et al., 2016; Park and Moghaddam, 2017). Future work will be critical in identifying the brain circuitry that mediates the dual-valence response of dmPFC and VTA neurons.

References

- Abercrombie E, Keefe K, DiFrischia D, Zigmond M (1989) Differential effect of stress on in vivo dopamine release in striatum, nucleus accumbens, and medial frontal cortex. *J Neurochem* 52:1655–1658.
- Adhikari A, Topiwala MA, Gordon JA (2010) Synchronized activity between the ventral hippocampus and the medial prefrontal cortex during anxiety. *Neuron* 65:257–269.
- Amarante LM, Caetano MS, Laubach M (2017) Medial frontal theta is entrained to rewarded actions. *J Neurosci* 37:1965–1967.
- Anstrom KK, Woodward DJ (2005) Restraint increases dopaminergic burst firing in awake rats. *Neuropsychopharmacology* 30:1832–1840.
- Arnsten AFT (2015) Stress weakens prefrontal networks: molecular insults to higher cognition. *Nat Neurosci* 18:1376–1385.
- Benchenane K, Tiesinga PH, Battaglia FP (2011) Oscillations in the prefrontal cortex: a gateway to memory and attention. *Curr Opin Neurobiol* 21:475–485.
- Berridge KC (2019) Affective valence in the brain: modules or modes? *Nat Rev Neurosci* 20:225–234.
- Bissonette GB, Gentry RN, Padmala S, Pessoa L, Roesch MR (2014) Impact of appetitive and aversive outcomes on brain responses:

- linking the animal and human literatures. *Front Syst Neurosci* 8:1–15.
- Brischoux F, Chakraborty S, Brierley DI, Ungless MA (2009) Phasic excitation of dopamine neurons in ventral VTA by noxious stimuli. *Proc Natl Acad Sci USA* 106:4894–4899.
- Bromberg-Martin ES, Matsumoto M, Hikosaka O (2010) Dopamine in motivational control: rewarding, aversive, and alerting. *Neuron* 68:815–834.
- Bruchim-Samuel M, Lax E, Gazit T, Friedman A, Ahdoot H, Bairachnaya M, Pinhasov A, Yadid G (2016) Electrical stimulation of the vmPFC serves as a remote control to affect VTA activity and improve depressive-like behavior. *Exp Neurol* 283:255–263.
- Burgos-Robles A, Kimchi EY, Izadmehr EM, Porzenheim MJ, Ramos-guasp WA, Nieh EH, Felix-ortiz AC, Namburi P, Leppla CA, Presbrey KN, Anandalingam KK, Pagan-rivera PA, Anahtar M, Beyeler A, Tye KM (2017) Amygdala inputs to prefrontal cortex guide behavior amid conflicting cues of reward and punishment. *Nat Neurosci* 20:824–835.
- Butts KA, Weinberg J, Young AH, Phillips AG (2011) Glucocorticoid receptors in the prefrontal cortex regulate stress-evoked dopamine efflux and aspects of executive function. *Proc Natl Acad Sci USA* 108:18459–18464.
- Butts KA, Floresco SB, Phillips AG (2013) Acute stress impairs set-shifting but not reversal learning. *Behav Brain Res* 252:222–229.
- Caracheo BF, Grewal JJS, Seamans JK (2018) Persistent valence representations by ensembles of anterior cingulate cortex neurons. *Front Syst Neurosci* 12:1–11.
- Carr DB, Sesack SR (2000) Projections from the rat prefrontal cortex to the ventral tegmental area: target specificity in the synaptic associations with mesoaccumbens and mesocortical neurons. *J Neurosci* 20:3864–3873.
- Cha J, Carlson JM, DeDora DJ, Greenberg T, Proudfit GH, Mujica-Parodi LR (2014) Hyper-reactive human ventral tegmental area and aberrant mesocorticolimbic connectivity in overgeneralization of fear in generalized anxiety disorder. *J Neurosci* 34:5855–5860.
- Ch'ng S, Fu J, Brown RM, McDougall SJ, Lawrence AJ (2018) The intersection of stress and reward: BNST modulation of aversive and appetitive states. *Prog Neuropsychopharmacol Biol Psychiatry* 87:108–125.
- Chaudhury D, Walsh JJ, Friedman AK, Juarez B, Ku SM, Koo JW, Ferguson D, Tsai HC, Pomeranz L, Christoffel DJ, Nectow AR, Ekstrand M, Domingos A, Mazei-Robison MS, Mouzon E, Lobo MK, Neve RL, Friedman JM, Russo SJ, Deisseroth K, et al. (2013) Rapid regulation of depression-related behaviours by control of midbrain dopamine neurons. *Nature* 493:532–536.
- Cohen JY, Haesler S, Vong L, Lowell BB, Uchida N (2012) Neuron-type-specific signals for reward and punishment in the ventral tegmental area. *Nature* 482:85–88.
- Daviu N, Bruchas MR, Moghaddam B, Sandi C, Beyeler A (2019) Neurobiological links between stress and anxiety. *Neurobiol Stress* 11:100191.
- DeFelipe J, Fariñas I (1992) The pyramidal neuron of the cerebral cortex: morphological and chemical characteristics of the synaptic inputs. *Prog Neurobiol* 39:563–607.
- de Jong JW, Afjei SA, Pollak Dorocic I, Peck JR, Liu C, Kim CK, Tian L, Deisseroth K, Lammel S (2019) A neural circuit mechanism for encoding aversive stimuli in the mesolimbic dopamine system. *Neuron* 101:133–151.e7.
- Del Arco A, Park J, Wood J, Kim Y, Moghaddam B (2017) Adaptive encoding of outcome prediction by prefrontal cortex ensembles supports behavioral flexibility. *J Neurosci* 37:8363–8373.
- Ellwood IT, Patel T, Wadia V, Lee AT, Liptak AT, Bender KJ, Sohal VS (2017) Tonic or phasic stimulation of dopaminergic projections to prefrontal cortex causes mice to maintain or deviate from previously learned behavioral strategies. *J Neurosci* 37:8315–8329.
- Engelhard B, Finkelstein J, Cox J, Fleming W, Jang HJ, Ornelas S, Koay SA, Thiberge SY, Daw ND, Tank DW, Witten IB (2019) Specialized coding of sensory, motor and cognitive variables in VTA dopamine neurons. *Nature* 570:509–513.
- Ferenczi EA, Zalocusky KA, Liston C, Grosenick L, Warden MR, Amatya D, Katovich K, Mehta H, Patenaude B, Ramakrishnan C, Kalanithi P, Etkin A, Knutson B, Glover GH, Deisseroth K (2016) Prefrontal cortical regulation of brainwide circuit dynamics and reward-related behavior. *Science* 351:aac9698.
- Fries P (2005) A mechanism for cognitive dynamics: neuronal communication through neuronal coherence. *Trends Cogn Sci* 9:474–480.
- Fujisawa S, Buzsáki G (2011) A 4 Hz oscillation adaptively synchronizes prefrontal, VTA, and hippocampal activities. *Neuron* 72:153–165.
- Gentry RN, Schuweiler DR, Roesch MR (2019) Dopamine signals related to appetitive and aversive events in paradigms that manipulate reward and avoidability. *Brain Res* 1713:80–90.
- Gore F, Schwartz EC, Brangers BC, Aladi S, Stuijenske JM, Likhtik E, Russo MJ, Gordon JA, Salzman CD, Axel R (2015) Neural representations of unconditioned stimuli in basolateral amygdala mediate innate and learned responses. *Cell* 162:134–145.
- Grunfeld IS, Likhtik E (2018) Mixed selectivity encoding and action selection in the prefrontal cortex during threat assessment. *Curr Opin Neurobiol* 49:108–115.
- Hermans EJ, Henckens M, Joëls M, Fernández G (2014) Dynamic adaptation of large-scale brain networks in response to acute stressors. *Trends Neurosci* 37:304–314.
- Holly EN, Miczek KA (2016) Ventral tegmental area dopamine revisited: effects of acute and repeated stress. *Psychopharmacology (Berl)* 233:163–186.
- Holmes A, Wellman CL (2009) Stress-induced prefrontal reorganization and executive dysfunction in rodents. *Neurosci Biobehav Rev* 33:773–783.
- Homayoun H, Moghaddam B (2007) NMDA receptor hypofunction produces opposite effects on prefrontal cortex interneurons and pyramidal neurons. *J Neurosci* 27:11496–11500.
- Horst NK, Laubach M (2013) Reward-related activity in the medial prefrontal cortex is driven by consumption. *Front Neurosci* 7:1–15.
- Inglis FM, Moghaddam B (1999) Dopaminergic innervation of the amygdala is highly responsive to stress. *J Neurochem* 72:1088–1094.
- Jackson ME, Moghaddam B (2006) Distinct patterns of plasticity in prefrontal cortex neurons that encode slow and fast responses to stress. *Eur J Neurosci* 24:1702–1710.
- Kalivas PW, Volkow ND (2005) The neural basis of addiction. *Am J Psychiatry* 162:1403–1413.
- Karalis N, Dejean C, Chaudun F, Khoder S, Rozeske RR, Wurtz H, Bagur S, Benchenane K, Sirota A, Courtin J, Herry C (2016) 4-Hz oscillations synchronize prefrontal-amygdala circuits during fear behavior. *Nat Neurosci* 19:605–612.
- Kim CK, Yang SJ, Pichamoorthy N, Young NP, Kauvar I, Jennings JH, Lerner TN, Berndt A, Lee SY, Ramakrishnan C, Davidson TJ, Inoue M, Bito H, Deisseroth K (2016) Simultaneous fast measurement of circuit dynamics at multiple sites across the mammalian brain. *Nat Methods* 13:325–328.
- Kim YB, Matthews M, Moghaddam B (2010) Putative γ -aminobutyric acid neurons in the ventral tegmental area have a similar pattern of plasticity as dopamine neurons during appetitive and aversive learning. *Eur J Neurosci* 32:1564–1572.
- Kim Y, Wood J, Moghaddam B (2012) Coordinated activity of ventral tegmental neurons adapts to appetitive and aversive learning. *PLoS One* 7:e29766.
- Kobak D, Brendel W, Constantinidis C, Feierstein CE, Kepecs A, Mainen ZF, Romo R, Qi X, Uchida N, Machens CK (2016) Demixed principal component analysis of neural population data. *Elife* 5:e10989.
- Kobayashi S, Nomoto K, Watanabe M, Hikosaka O, Schultz W, Sakagami M (2006) Influences of rewarding and aversive outcomes on activity in macaque lateral prefrontal cortex. *Neuron* 51:861–870.
- Lammel S, Lim BK, Ran C, Huang KW, Betley MJ, Tye KM, Deisseroth K, Malenka RC (2012) Input-specific control of reward and aversion in the ventral tegmental area. *Nature* 491:212–217.

- Lederbogen F, Kirsch P, Haddad L, Streit F, Tost H, Schuch P, Wüst S, Pruessner JC, Rietschel M, Deuschle M, Meyer-Lindenberg A (2011) City living and urban upbringing affect neural social stress processing in humans. *Nature* 474:498–501.
- Li Y, Muthis A, Grewe BF, Osterhout JA, Ahanonu B, Schnitzer MJ, Murthy VN, Dulac C (2017) Neuronal representation of social information in the medial amygdala of awake behaving mice. *Cell* 171:1176–1190.e17.
- Lohani S, Martig AK, Deisseroth K, Witten IB, Moghaddam B (2019) Dopamine modulation of prefrontal cortex activity is manifold and operates at multiple temporal and spatial scales. *Cell Rep* 27:99–114.e6.
- Ma L, Hyman JM, Durstewitz D, Phillips AG, Seamans JK (2016) A quantitative analysis of context-dependent remapping of medial frontal cortex neurons and ensembles. *J Neurosci* 36:8258–8272.
- Matsumoto H, Tian J, Uchida N, Watabe-Uchida M (2016) Midbrain dopamine neurons signal aversion in a reward-context-dependent manner. *Elife* 5:e17328.
- Meyer-Lindenberg A (2010) From maps to mechanisms through neuroimaging of schizophrenia. *Nature* 468:194–202.
- Mininni CJ, Caiafa CF, Zanutto BS, Tseng KY, Lew SE (2018) Putative dopamine neurons in the ventral tegmental area enhance information coding in the prefrontal cortex. *Sci Rep* 8:11740.
- Mitra PP, Pesaran B (1999) Analysis of dynamic brain imaging data. *Biophys J* 76:691–708.
- Morales M, Margolis EB (2017) Ventral tegmental area: cellular heterogeneity, connectivity and behaviour. *Nat Rev Neurosci* 18:73–85.
- Moriya S, Yamashita A, Kawashima S, Nishi R, Yamanaka A, Kuwaki T (2018) Acute aversive stimuli rapidly increase the activity of ventral tegmental area dopamine neurons in awake mice. *Neuroscience* 386:16–23.
- Nair-Roberts RG, Chatelain-Badie SD, Benson E, White-Cooper H, Bolam JP, Ungless MA (2008) Stereological estimates of dopaminergic, GABAergic and glutamatergic neurons in the ventral tegmental area, substantia nigra and retrorubral field in the rat. *Neuroscience* 152:1024–1031.
- Narayanan N, Laubach M (2009) Methods for studying functional interactions among neuronal populations. *Methods Mol Biol* 489:135–165.
- Padilla-Coreano N, Canetta S, Mikofsky RM, Alway E, Passecker J, Myroshnychenko MV, Garcia-Garcia AL, Warren R, Teboul E, Blackman DR, Morton MP, Hupalo S, Tye KM, Kellendonk C, Kupferschmidt DA, Gordon JA (2019) Hippocampal-prefrontal theta transmission regulates avoidance behavior. *Neuron* 104:601–610.e4.
- Park J, Moghaddam B (2017) Risk of punishment influences discrete and coordinated encoding of reward-guided actions by prefrontal cortex and VTA neurons. *Elife* 6:e30056.
- Parker KL, Chen K-H, Kingyon JR, Cavanagh JF, Narayanan NS (2014) D1-dependent 4 Hz oscillations and ramping activity in rodent medial frontal cortex during interval timing. *J Neurosci* 34:16774–16783.
- Rigotti M, Barak O, Warden MR, Wang XJ, Daw ND, Miller EK, Fusi S (2013) The importance of mixed selectivity in complex cognitive tasks. *Nature* 497:585–590.
- Rozeske RR, Jercog D, Karalis N, Chaudun F, Khoder S, Girard D, Winke N, Herry C (2018) Prefrontal-periaqueductal gray-projecting neurons mediate context fear discrimination. *Neuron* 97:898–910.
- Schultz W (1998) Predictive reward signal of dopamine neurons. *J Neurophysiol* 80:1–27.
- Smith WJ, Stewart J, Pfau JG (1997) Tail pinch induces fos immunoreactivity within several regions of the male rat brain: effects of age. *Physiol Behav* 61:717–723.
- Somogyi P, Tamás G, Lujan R, Buhl EH (1998) Salient features of synaptic organisation in the cerebral cortex. *Brain Res Brain Res Rev* 26:113–135.
- Stanton CH, Holmes AJ, Chang SWC, Joormann J (2019) From stress to anhedonia: molecular processes through functional circuits. *Trends Neurosci* 42:23–42.
- Steinberg EE, Keifflin R, Boivin JR, Witten IB, Deisseroth K, Janak PH (2013) A causal link between prediction errors, dopamine neurons and learning. *Nat Neurosci* 16:966–973.
- Taber MT, Fibiger HC (1997) Activation of the mesocortical dopamine system by feeding: lack of a selective response to stress. *Neuroscience* 77:295–298.
- Thierry AM, Tassin JP, Blanc G, Glowinski J (1976) Selective activation of mesocortical DA system by stress. *Nature* 263:242–244.
- Tye KM, Mirzabekov JJ, Warden MR, Ferenczi EA, Tsai H-C, Finkelstein J, Kim SY, Adhikari A, Thompson KR, Andalman AS, Gunaydin LA, Witten IB, Deisseroth K (2013) Dopamine neurons modulate neural encoding and expression of depression-related behaviour. *Nature* 493:537–541.
- Ulrich-Lai YM, Herman JP (2009) Neural regulation of endocrine and autonomic stress responses. *Nat Rev Neurosci* 10:397–409.
- Vander Weele CM, Siciliano CA, Matthews GA, Namburi P, Izadmehr EM, Espinel IC, Nieh EH, Schut EHS, Padilla-Coreano N, Burgos-Robles A, Chang CJ, Kimchi EY, Beyeler A, Wichmann R, Wildes CP, Tye KM (2018) Dopamine enhances signal-to-noise ratio in cortical-brainstem encoding of aversive stimuli. *Nature* 563:397–401.
- Warden MR, Selimbeyoglu A, Mirzabekov JJ, Lo M, Thompson KR, Kim SY, Adhikari A, Tye KM, Frank LM, Deisseroth K (2012) A prefrontal cortex-brainstem neuronal projection that controls response to behavioural challenge. *Nature* 492:428–432.
- Weele CMV, Siciliano CA, Tye KM (2019) Dopamine tunes prefrontal outputs to orchestrate aversive processing. *Brain Res* 1713:16–31.
- Weinberg MS, Johnson DC, Bhatt AP, Spencer RL (2010) Medial prefrontal cortex activity can disrupt the expression of stress response habituation. *Neuroscience* 168:744–756.
- Ye L, Allen WE, Thompson KR, Tian Q, Hsueh B, Ramakrishnan C, Wang A-C, Jennings JH, Adhikari A, Halpern CH, Witten IB, Barth AL, Luo L, McNab JA, Deisseroth K (2016) Wiring and molecular features of prefrontal ensembles representing distinct experiences. *Cell* 165:1776–1713.