

**Keywords:** pancreatic cancer; pancreatic intraepithelial neoplasia (PanIN); chemokines and chemokine receptors; tumour differentiation

## Early expression of the fractalkine receptor CX3CR1 in pancreatic carcinogenesis

G Celesti<sup>1,11</sup>, G Di Caro<sup>1,2,11</sup>, P Bianchi<sup>1</sup>, F Grizzi<sup>1</sup>, F Marchesi<sup>3</sup>, G Basso<sup>1,4</sup>, D Rahal<sup>5</sup>, G Delconte<sup>1</sup>, M Catalano<sup>1</sup>, P Cappello<sup>6,7</sup>, M Roncalli<sup>5,8</sup>, A Zerbi<sup>9</sup>, M Montorsi<sup>8,9</sup>, F Novelli<sup>6,7</sup>, A Mantovani<sup>3,8</sup>, P Allavena<sup>3</sup>, A Malesci<sup>\*8,10</sup> and L Laghi<sup>\*1,10</sup>

<sup>1</sup>Laboratory of Molecular Gastroenterology, Department of Gastroenterology, Humanitas Clinical and Research Center, Via Manzoni, 56, 20089 Rozzano, Milan, Italy; <sup>2</sup>PhD Programs in Pathology and Neuropathology, University of Milan, Via Manzoni, 56, 20089 Rozzano, Milan, Italy; <sup>3</sup>Department of Immunology and Inflammation, Humanitas Clinical and Research Center, Via Manzoni, 56, 20089 Rozzano, Milan, Italy; <sup>4</sup>School of Molecular Medicine, University of Milan, Via Manzoni, 56, 20089 Rozzano, Milan, Italy; <sup>5</sup>Department of Surgical Pathology, Humanitas Clinical and Research Center, University of Milan, Via Manzoni, 56, 20089 Rozzano, Milan, Italy; <sup>6</sup>Centro Ricerche Medicina Sperimentale, Azienda Universitaria Ospedaliera San Giovanni Battista, University of Torino, Via Cherasco, 15, 10126 Torino, Italy; <sup>7</sup>Department of Medicine and Experimental Oncology, University of Torino, Via Cherasco, 15, 10126 Torino, Italy; <sup>8</sup>Department of Medical Biotechnologies and Translational Medicine, University of Milan, Milan, Italy; <sup>9</sup>Department of General Surgery, Humanitas Clinical and Research Center, University of Milan, Via Manzoni, 56, 20089 Rozzano, Milan, Italy and <sup>10</sup>Department of Gastroenterology, Humanitas Clinical and Research Center, Via Manzoni, 56, 20089 Rozzano, Milan, Italy

**Background:** In pancreatic ductal adenocarcinoma (PDAC), fractalkine receptor CX3CR1 contributes to perineural invasion (PNI). We investigated whether CX3CR1 expression occurs early in PDAC and correlates with tumour features other than PNI.

**Methods:** We studied CX3CR1 and CX3CL1 expression by immunohistochemistry in 104 human PDAC and coexisting Pancreatic Intraepithelial Neoplasia (PanIN), and in PdxCre/LSL-Kras<sup>G12D</sup> mouse model of PDAC. CX3CR1 expression *in vitro* was studied by a spheroid model, and *in vivo* by syngenic mouse graft of tumour cells.

**Results:** In total, 56 (53.9%) PDAC expressed CX3CR1, 70 (67.3%) CX3CL1, and 45 (43.3%) both. CX3CR1 expression was independently associated with tumour glandular differentiation ( $P=0.005$ ) and PNI ( $P=0.01$ ). Pancreatic Intraepithelial Neoplasias were more frequently CX3CR1<sup>+</sup> (80.3%,  $P<0.001$ ) and CX3CL1<sup>+</sup> (86.8%,  $P=0.002$ ) than matched cancers. The survival of PDAC patients was better in those with CX3CR1<sup>+</sup> tumour ( $P=0.05$ ). Mouse PanINs were also CX3CR1<sup>+</sup> and -CL1<sup>+</sup>. *In vitro*, cytokines significantly increased CX3CL1 but not CX3CR1 expression. Differently, CX3CR1 was upregulated in tumour spheroids, and *in vivo* only in well-differentiated tumours.

**Conclusion:** Tumour differentiation, rather than inflammatory signalling, modulates CX3CR1 expression in PanINs and PDAC. CX3CR1 expression pattern suggests its early involvement in PDAC progression, outlining a potential target for interfering with the PanIN transition to invasive cancer.

Pancreatic cancer, namely ductal adenocarcinoma (PDAC), is a major health problem, the death rate approaching the incidence of the disease (Hidalgo, 2010). The majority of PDACs are diagnosed at an advanced stage, beyond any possibility of cure. A better understanding of the early neoplastic changes in the pancreas might help anticipating the diagnosis and counteracting the rapid

\*Correspondence: Dr A Malesci; E-mail: alberto.malesci@humanitas.it or Dr L Laghi; E-mail: luigi.laghi@humanitas.it

<sup>11</sup>These authors contributed equally to this work.

Revised 9 July 2013; accepted 22 August 2013; published online 1 October 2013

© 2013 Cancer Research UK. All rights reserved 0007–0920/13

progression of pancreatic cancer. Microscopic pre-cancerous lesions (Pancreatic Intraepithelial Neoplasia, PanIN) house *KRAS* mutations (Jones *et al*, 2008; Sipos *et al*, 2009) and accumulate further gene damage along progression to cancer (Jones *et al*, 2008). However, gene damage is not the only driver of pancreatic carcinogenesis, PDAC being characterised by a dense stromal reaction, referred to as desmoplasia (Farrow *et al*, 2008), which is an active partner in disease progression (Hwang *et al*, 2008; Vonlaufen *et al*, 2008). Stromal cells produce cytokines and growth factors that establish an active tumour-stroma cross-talk (Farrow *et al*, 2008; Hwang *et al*, 2008; Vonlaufen *et al*, 2008). Mediators of the cross-talk between cancer and microenvironment include chemokines, small chemotactic cytokines, and their receptors (Mantovani *et al*, 2008; Wang *et al*, 2008; Balkwill, 2012). Tumour expression of chemotactic molecules modifies the behaviour of cancer cells and tumour progression. The gain of expression of chemokine receptors enhances cancer invasion and spread by mediating cancer cell trafficking and metastasis homing (Mantovani *et al*, 2010). Chemokine expression in cancer may also affect immune recognition by the host, and may promote autocrine loops favouring the survival of tumour cells (Wang *et al*, 2008; Balkwill, 2012). The expression of the chemokine receptor CXCR4 has been associated with an enhanced progression of PDAC, and with stemness of cells with metastatic potential (Marchesi *et al*, 2004; Hermann *et al*, 2007). Surprisingly, the expression of CXCR4 and of its ligand CXCL12 begins in the pre-invasive stages of pancreatic neoplasia (Thomas *et al*, 2008). The relevance of chemokine receptors in PDAC spread has been recently strengthened by the finding that tumour cells also express the chemokine receptor CX3CR1 (Marchesi *et al*, 2008). CX3CR1 forms a high-affinity axis (CX3-CR1-CL1) with its unique ligand CX3CL1 (also referred to as Fractalkine/Neurotactin), a mucin-chemokine hybrid expressed by endothelial cells and neurons, either as a membrane-anchored adhesion molecule or as a secreted chemoattractant (Bazan *et al*, 1997; Pan *et al*, 1997). CX3CR1 expression was associated with the degree of perineural invasion (PNI), and PDAC cells expressing CX3CR1 were found to disrupt peripheral nerves once xenografted in mice (Marchesi *et al*, 2008). It is unknown whether the expression of the receptor occurs already in pre-invasive stages of pancreatic carcinogenesis, or alternatively, only in invasive cancer. Furthermore, limited information is available as to the expression of the ligand in PDAC (Xu *et al*, 2012), and as to whether tumour features and microenvironment cross-talk may affect CX3-CR1-CL1 status.

This study was aimed to investigate whether pancreatic cancer expresses CX3-CR1-CL1, already gaining the expression of these chemotactic molecules in pre-invasive stages, and whether an association exists with PDAC features and outcome. To these aims, we assessed the expression of CX3-CR1-CL1 in human PanINs and invasive cancers, as well as in PanINs of a *Kras*-mutated mouse model of pancreatic cancer, and tested their responsiveness to cytokines and their expression in tumours propagated *in vivo*.

## MATERIALS AND METHODS

**Patients and tissues specimens.** We retrospectively retrieved the tissue specimens from 104 patients who underwent resective surgery for pancreatic cancer at the Humanitas Clinical and Research Center, Rozzano, Milan, Italy. Seventy-six PDAC also harboured precursor lesions.

For each patient included in the study, demographics and complete pathological data at diagnosis were available. Specimens were reviewed by pathologists unaware of molecular data. Tumour pathological staging, histopathological typing, tumour grade, and the presence or absence of PNI and/or of extramural vein invasion

were assessed in each PDAC. The absence of nodal involvement was considered as appropriate only for PDAC in which  $\geq 12$  lymph nodes had been assessed. The study was conducted in accordance with the guidelines of the Ethics Committee of the Hospital, and the referring physician obtained the informed consent of the patients to the treatment of their personal data at the time of surgery. The overall survival (OS) was calculated from diagnosis until death, and deceases were documented by obtaining the death certificate in every case.

**Mouse models of pancreatic cancer.** Female and male mice carrying mutated *Kras*<sup>G12D</sup> or *Trp53*<sup>R172H</sup> (C57BL/6;129SvJae H-2b;d) under the endogenous promoter and flanked by Lox-STOP-Lox cassettes were bred by us (Hingorani *et al*, 2005). PdxCre/LSL-*Kras*<sup>G12D</sup> and PdxCre/LSL-*Kras*<sup>G12D</sup>-*Trp53*<sup>R172H</sup> double mutant mice, developing PDAC, were generated by crossing them with C57BL/6 mice, expressing Cre recombinase, under a specific pancreatic transcriptional factor Pdx-1 (pancreatic duodenum homeobox 1) promoter. Mice were screened by PCR using tail DNA amplified by specific primers to Lox-P cassette flanking *K-ras* gene and Cre recombinase gene. Mice were kept under pathogen-free conditions at the Molecular Biology Center, University of Turin, and treated in accordance with European Union and University of Turin Guidelines. Pancreata from wild-type or PdxCre/LSL-*Kras*<sup>G12D</sup> mutant mice killed at 1, 6, and 9 months from birth were subsequently fixed in formalin and embedded in paraffin.

**Immunohistochemistry.** Two- $\mu$ m-thick sections were processed for immunohistochemistry (IHC). After deparaffining and rehydration, the sections were immersed in antigen retrieval bath, incubated with 3% H<sub>2</sub>O<sub>2</sub> for 15 min, and treated for 2 h at room temperature with primary antibodies raised against CX3CR1 (Ab8021, polyclonal rabbit anti-human; Abcam, Cambridge, UK) and CX3CL1 (AF365, polyclonal goat anti-human; R&D Systems, Minneapolis, MN, USA), or with rabbit or goat IgG (Dako, Milan, Italy) to serve as negative controls, followed by 30-min incubation with the DAKO Envision system (Dako) or the Anti-Goat Polymer kit (Biocare, San Francisco, CA, USA). Three-3'-diaminobenzidine tetrahydrochloride (Dako) was used as a chromogen and nuclei were lightly counterstained with haematoxylin (Medita, Bergamo, Italy).

Following IHC, in a subset of 15 PDAC harbouring CX3CR1<sup>+</sup> precursor lesions, PanINs were graded (54 PanIN-1, 43 PanIN-2, and 35 PanIN-3) and systematically evaluated for CX3CR1, CX3CL1, P16, and E-Cadherin expression according to the degree of dysplasia. P16/CDKN2A and E-Cadherin IHC was performed with mouse monoclonal antibodies (Ab-7, 16P07; NeoMarkers Lab Vision, Fremont, CA, USA and clone NCH38; Dako, respectively).

In pancreata obtained from five PdxCre/LSL-*Kras*<sup>G12D</sup> mutant mice, CX3CR1 IHC was performed with the same antibody used for human tissues, CX3CL1 expression was investigated by a polyclonal rabbit anti-mouse antibody (Torrey Pines Biolabs, East Orange, NJ, USA), and recognition of S-100<sup>+</sup> neural structures was achieved by monoclonal rabbit anti-mouse antibodies (Dako).

The intensity of CX3CR1 and CX3CL1 immunoreactivity was independently evaluated by two researchers (FG and CG). Immunoreactivity of infiltrating leukocytes and of endothelial cells served as positive internal controls for CX3CR1 and for CX3CL1, respectively. The semiquantitative evaluation of immunoreactivity of neoplastic ductal cells was first attributed through a 0-to-3 score: 0 (absence of immunoreactivity), 1 (weak), 2 (moderate), and 3 (strong), according to the level of immunoreactivity of most ( $\geq 70\%$ ) neoplastic cells (Marchesi *et al*, 2008). Samples with 0-1 and with 2-3 immunoreactivity were subsequently pooled together, in a binary classification.

**CX3CR1 and CX3CL1 mRNA expression in human and mouse ductal cell lines.** Quantitative RT-PCR was employed to assess

the expression of *CX3CR1* and *CX3CL1*. Briefly, 1  $\mu$ l of sample cDNA was added to the PCR mixture containing 2X Power SYBR Green Master Mix (Applied Biosystem, Life Technologies, Grand Island, NY, USA) and specific primers (for *CX3CR1*, 5'-GGGACT GTGTTCTGTCAT-3' and *CX3CR1* 5'-GACACTCTGGG CTTCTTGC-3'; for *CX3CL1* 5'-TGGCTGCTCCGCTTGGC-3', and *CX3CL1*, 5'-CCTGGTTCTGTTGATAGTGGATGAG-3'); 18s RNA was used as a housekeeping gene. Data analysis was performed by comparative Delta Ct ( $\Delta\Delta$ Ct) method, and fold change calculated using  $2^{-\Delta\Delta Ct}$ .

Primary mouse pancreatic cell lines DT6606 (obtained from a tumour arisen in a PdxCre/LSL-*Kras*<sup>G12D</sup> mouse) and K8484 (obtained from a tumour arisen in a PdxCre/LSL-*Kras*<sup>G12D</sup>-*Trp53*<sup>R172H</sup> mouse (Olive *et al*, 2009)) and human pancreatic cancer cell line A8184, MiaPacaII and AspCI were maintained in RPMI with 10% fetal bovine serum (FBS), 100 mg ml<sup>-1</sup> of penicillin G, 50 mg ml<sup>-1</sup> of Streptomycin and Ultraglutamine 2 mM and growth at 37 °C, 5% CO<sub>2</sub> incubator. Cells seeded at 10<sup>6</sup> cells per ml in six-well plates were stimulated with: interleukin-1 beta (IL-1 $\beta$ ) (20 ng ml<sup>-1</sup>), tumour necrosis factor- $\alpha$  (TNF- $\alpha$ ) (20 ng ml<sup>-1</sup>) and interferon- $\gamma$  (IFN- $\gamma$ ) (500 units per ml), interleukin-6 (IL-6), and transforming growth factor- $\beta$  (TGF- $\beta$ ) (10 ng ml<sup>-1</sup>) (Peprotech, Rocky Hill, NJ, USA) for 8 h. Expression of *CX3CR1* and *CX3CL1* was assessed by qRT-PCR, as previously described by using primers for murine *CX3CR1* 5'-ATTCTTCAT CACCGTCATCAG-3', 5'-ACTAATGGTGACACCGTGCT-3' and for murine *CX3CL1* 5'-GCTATCAGCTAAACCAGGAGTC-3', 5'-AGAAGCGTCTGTGCTGTGTC-3'.

**Three-dimensional cell culture, immunofluorescence, and cell transplantation in syngenic mice.** DT6606, K8484, A8184, and AspCI cells were mixed with Cultrex (5  $\times$  10<sup>4</sup> cells per 250 ml) and plated in a 24-well plate. Cells were fixed overnight in 4% PFA, washed twice with PBS - / - plus 0.2% Tween. Immunofluorescence was performed after blockade of endogenous non-specific antigens and permeabilisation by PBS - / - plus 10% normal goat serum, and 0.03% Triton. Cells were treated with primary antibodies raised against *CX3CR1* (Ab8021; Abcam) overnight at 4 °C, washed, and incubated with secondary antibody 1:2000 Alexa-fluor-488 (Invitrogen) for 1 h at room temperature. Subsequently, cells were incubated with 1:50 dilution of Alexa-fluor-594 phalloidin (Invitrogen). Nuclei were counterstained with DAPI (Invitrogen) 1:10,000. Imaging was obtained by confocal microscopy (Olympus, Tokyo, Japan). For RT-PCR analysis, mRNA from spheroid in culture was extracted by Trizol (Applied Biosystem), according to the manufacturer instruction, RT and analysis were performed as above described.

DT6606, K8484, and PANC02 cells were transplanted in syngenic C57BL/6 mice. We took advantage of a porous collagen biocompatible matrix, which provide a three-dimensional spatial architecture scaffold for the cells (Collagen Sponge CS-35; KOKEN Co Ltd, Tokyo, Japan). Collagen Sponges were loaded with DT6606, K8484, and PANC02 cells (10<sup>6</sup> per ml) and intradermally injected in 15, 8, and 5 C57BL/6 mice, respectively, by a small incision on the left flank. Mice were killed after 2 weeks and tumours were immediately resected and fixed in formalin.

**Statistical analysis.** Categorical associations between expression of *CX3CR1* and *CX3CL1* and clinical-pathological factors of PDAC were analysed by Chi-square (or Fisher's test, when appropriate), while Student's *T*-test was employed for continuous variables.

Kaplan–Meier curves of OS were plotted. The log-rank test was used to compare the curves of patient subgroups. A Cox proportional hazards model was constructed to assess the role of fractalkine and its receptor in predicting the OS.

Analyses were done using Epi Info version 3.5.1 (Centers for Disease Control and Prevention (CDC), Atlanta, GA, USA) and STATISTICA 7.1 (StatSoft, Tulsa, OK, USA). For each test, only

two-sided *P*-values lower than 0.05 were considered as statistically significant.

## RESULTS

**CX3CR1 expression in PDAC is associated with tumour glandular differentiation and PNI.** We previously showed that the chemokine receptor *CX3CR1* is upregulated in pancreatic cancer compared with normal exocrine tissue, and that receptor expression was involved in tumour PNI (Bazan *et al*, 1997). In this study, we investigated in an independent cohort whether the specific ligand *CX3CL1* is also expressed in PDAC, and whether both molecules are upregulated already in pre-neoplastic lesions (PanINs).

In normal pancreas, *CX3CR1* expression by IHC was faint to negative in exocrine cells but positive in endocrine islets (Figure 1A). Conversely, cancer cells in 56 of 104 (53.9%) PDAC expressed *CX3CR1*. In PDACs, *CX3CR1* expression was associated with a well-to-moderate differentiation (65.1% of *CX3CR1*<sup>+</sup> in G1/G2 PDAC vs 37.5% *CX3CR1*<sup>+</sup> in G3 PDAC; *P* = 0.005) (Figure 1B and C), as well as with the presence of PNI (63.1% of *CX3CR1*<sup>+</sup> neural-invasive PDAC vs 38.5% of *CX3CR1*<sup>+</sup> non-neural-invasive PDAC, *P* = 0.01) (Table 1), this latter being not associated with tumour grade. Notably, in our series the presence of PNI was not associated with tumour differentiation (40 of 63, 63.5%, G1–G2 neuroinvasive cancers vs 24 out of 40, 60%, G3 neuroinvasive ones, *P* = 0.44). In addition, by stratifying cancers according to their differentiation we found that *CX3CR1*<sup>+</sup> differentiated tumours were more frequently neural invasive (30 out of 40, 75%) than *CX3CR1*<sup>-</sup> cancers (10 out of 23, 43.5%; *P* = 0.008), while in poorly differentiated cases the frequency of PNI was similar in *CX3CR1*<sup>+</sup> (10 out of 15, 66%) and in *CX3CR1*<sup>-</sup> cancers (14 out of 25, 56%; *P* = 0.37) (Figure 1G).

In the tumour microenvironment, vessels and infiltrating inflammatory cells were also *CX3CR1*<sup>+</sup> (Figure 1B, inset).

In non-neoplastic pancreas, *CX3CL1* was faintly expressed in exocrine cells and endocrine islets, and expressed by neural cell bodies (Figure 1D and E) but not by neural processes. In all, 70 of 104 (67.3%) PDAC showed immunoreactivity for *CX3CL1* (Figure 1F). No significant correlation was found between *CX3CL1* expression and cancer features (Table 1), but the ligand was more frequently expressed in *CX3CR1*<sup>+</sup> (45 out of 56, 80.3%) than in *CX3CR1*<sup>-</sup> (23 out of 48, 51.1%; *P* = 0.002) PDAC.

At multivariate analysis, better tumour differentiation (*P* = 0.008), PNI (*P* = 0.03), and ligand expression (*P* = 0.003) were all independently associated with *CX3CR1* expression (Table 2).

**CX3CR1 expression in cancer is associated with better patient survival.** We assessed patient survival according to *CX3CR1* and *CX3CL1* status in PDAC. Patients with *CX3CR1*<sup>+</sup> PDAC had a longer survival (mean 22.6 months; 95% CI, 15.7–29.5 months) than patients with receptor-negative cancers (14.45 months; 95% CI, 11.0–17.8 months), although the difference was not statistically significant (log-rank test, *P* = 0.07). However, considering only patients with radical surgery and no surgery-related mortality, those with *CX3CR1*<sup>+</sup> PDAC had a significantly better survival (31.95 months; 95% CI, 22.7–41.2 months) than those with *CX3CR1*-immunonegative cancers (18.9 months; 95% CI, 14.9–22.9 months; log-rank test, *P* = 0.05) (Figure 1H). No survival difference was observed according to *CX3CL1* status in PDAC (*P* = 0.95). In this set of patients, the analysis by Cox proportional-hazard model showed that the tumour expression of *CX3CR1* was associated with a better survival (HR 0.56, 95% CI, 0.32–1.00; *P* = 0.05), independently of tumour grade and PNI. Adjusting the model by tumour stage resulted in a loss of statistical significance, although patients with *CX3CR1*<sup>+</sup> PDACs retained tendency to better survival (HR 0.58, 95% CI, 0.32–1.04; *P* = 0.07).

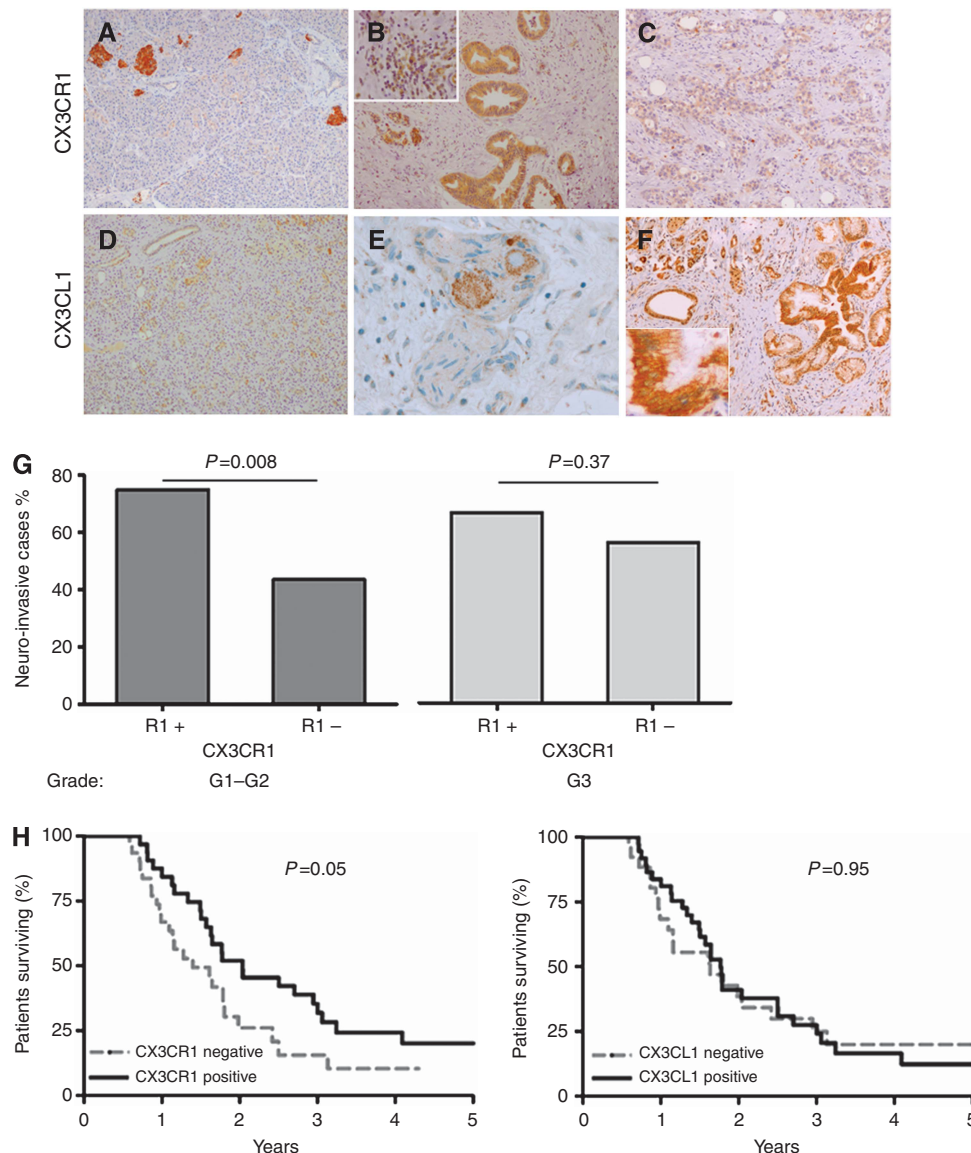


Figure 1. CX3CR1 and CX3CL1 expression in normal pancreas and in pancreatic cancer. (A) CX3CR1 expression in normal pancreas, (B) in well- and (C) in poorly differentiated PDAC, and (B, inset) in inflammatory cells in tumour microenvironment. (D) CX3CL1 expression in normal pancreas, (E) in neural cell bodies, and (F) in PDAC (box,  $\times 40$  magnification of a CX3CL1<sup>+</sup> PDAC). Objective magnification  $\times 10$  (A–D and F); (E) and inset in (B),  $\times 40$ . (G) Frequency of CX3CR1<sup>+</sup> and CX3CR1<sup>-</sup> PDAC with PNI according to tumour differentiation (Grade, G1–G2 well-to-moderately differentiated PDAC; G3, poorly differentiated PDAC). (H) Kaplan–Meier curves for overall survival of patients after radical resection of PDAC ( $n = 67$ ), according to the status of CX3CR1 (left panel) and -CL1 (right panel) in cancer. *P*-values by log-rank test. \*indicates  $P < 0.05$ .

**Precursor lesions of pancreatic cancer express CX3CR1 and CX3CL1.** We evaluated receptor and ligand status in PanINs to assess whether their expression appears before an invasive stage. In our series, 76 (73.1%) PDAC specimens harboured precursor lesions. Precursor lesions were in general more frequently positive for CX3CR1 than PDACs (61, 80.3% vs 42, 55.3%, respectively;  $P = 0.002$ ), and specifically PanINs in specimens of undifferentiated G3 cancers were more frequently CX3CR1<sup>+</sup> than PDAC (22 out of 28, 78.6% vs 10 out of 28, 35.6%, respectively;  $P = 0.001$ ) (Figure 2A). CX3CL1 was also strongly upregulated in PanINs (40 out of 48, 83.3%) (Figure 2A) and, as observed for the receptor, ligand expression was higher in PanINs (26 out of 28, 92.9%) than in associated G3 PDACs (17 out of 28, 60.7%;  $P = 0.005$ ) (Figure 2A).

Next, we studied ligand and receptor expression in precursor lesions according to their degree of dysplasia, characterised by morphological analysis and molecular phenotype (E-Cadherin and

p16/CDKN2A; Supplementary Figure S1). Of 15 PDAC specimens analysed, 8 out of 8 G1–G2 tumours were CX3CR1<sup>+</sup>, while 3 out of 7 G3 tumours were CX3CR1<sup>+</sup>. In the set of graded PanINs, the frequency of CX3CR1<sup>+</sup> precursor lesions increased from PanINs-1 to through PanINs-3 ( $P < 0.001$ ; Figure 2B); conversely, CX3CL1 expression decreased from PanIN-1 through PanIN-2 and PanIN-3 ( $P = 0.003$ ; Figure 2B). Representative images of CX3CR1 and CX3CL1 immunohistochemical staining in human PanINs are shown in Figure 3A.

Overall, upregulation of both CX3CR1 and CX3CL1 is an early feature of pancreatic carcinogenesis, being expressed already in PanINs-1. While positivity for both molecules is maintained through carcinoma stage if PDAC retains well-to-moderate differentiation, poorly differentiated tumours tend to lose their expression. These results indicate that the expression of the CX3CL1/CX3CR1 axis is a distinguishing feature of tumours with glandular morphology.

Table 1. CX3CR1 and CX3CL1 expression in 104 PDAC according to patients' demographics and to tumour features

	Expression in PDAC					
	CX3CR1			CX3CL1		
	Negative n = 48 (46.1%)	Positive n = 56 (53.9%)	P <sup>a</sup>	Negative n = 34 (32.7%)	Positive n = 70 (67.3%)	P <sup>a</sup>
Patient age (years, mean ± s.d.)	65.6 ± 9.4	63.9 ± 7.6	0.29	63.4 ± 9.5	65.3 ± 7.9	0.28
<b>Patient gender</b>						
Male	30 (47.6)	32 (52.4)	0.36	20 (31.7)	43 (68.3)	0.48
Female	18 (43.9)	23 (56.1)		14 (34.1)	27 (65.9)	
<b>Tumour location</b>						
Head	40 (47.1)	45 (52.9)	1.00	29 (34.1)	56 (65.9)	0.51
Body-tail	9 (47.4)	10 (52.6)		5 (26.3)	14 (73.7)	
<b>Tumour invasion</b>						
pT1–T2	4 (40.0)	6 (60.0)	0.55	4 (40.0)	6 (60.0)	0.64
pT3	41 (45.6)	49 (54.4)		28 (31.1)	62 (68.9)	
pT4	3 (75.0)	1 (25.0)		2 (50.0)	2 (50.0)	
<b>Nodal metastasis</b>						
N0	3 (25.0)	9 (75.0)	0.29 <sup>b</sup>	3 (25.0)	9 (75.0)	0.22 <sup>b</sup>
N+	35 (50.7)	34 (49.3)		25 (36.2)	44 (63.8)	
Nx	10 (43.5)	13 (56.5)		6 (26.0)	17 (64.0)	
<b>Tumour grade<sup>c</sup></b>						
G1–G2	23 (36.5)	40 (63.5)	0.005	21 (33.3)	42 (66.7)	0.47
G3	25 (62.5)	15 (37.5)		13 (32.5)	27 (67.5)	
Tumour diameter (cm, mean ± s.d.)	3.6 ± 2.1	3.7 ± 1.5	0.94	3.5 ± 1.9	3.7 ± 1.7	0.66
<b>Neural invasion</b>						
No	24 (61.5)	15 (38.5)	0.01	15 (31.2)	24 (68.8)	0.39
Yes	24 (36.9)	41 (63.1)		19 (29.3)	46 (70.7)	
<b>Vascular invasion</b>						
No	23 (43.4)	30 (56.6)	0.28	18 (34.0)	35 (66.0)	0.39
Yes	25 (49.0)	26 (51.0)		16 (31.4)	35 (68.6)	

Abbreviation: PDAC = pancreatic ductal adenocarcinoma.  
<sup>a</sup>By chi-square or Fisher's exact test as appropriate, except for patients' age and tumour diameter comparisons, for which Student's t-test was used.  
<sup>b</sup>P-values of frequency distribution assessed in 81 (75.9%) PDAC with reliable nodal staging.  
<sup>c</sup>Not determined in one PDAC, treated with neo-adjuvant radio-chemio-therapy.

To confirm these findings, we studied precursor lesions in the PdxCre/LSL-Kras<sup>G12D</sup> mouse model of pancreatic cancer. As in humans, the normal exocrine pancreas of mice killed before the development of precursor lesions (<6 months) did not show CX3CR1 or CX3CL1 expression. Differently, CX3CR1 and CX3CL1 were expressed in the PanINs of mice older than 6 months of age, irrespectively of the degree of dysplasia (Figure 3B).

To evaluate whether precursor lesions can mimic PNI, we stained the pancreata of five PdxCre/LSL-Kras<sup>G12D</sup> mice with anti-S-100. Immunostaining revealed a small fraction (13 of 400; 3.25%) of precursor lesions either in proximity of, or in contact with, neural structures (Figure 3B).

**CX3CR1 is unresponsive to inflammatory stimuli, but its expression is enhanced in spheroids *in vitro*, and in well-differentiated tumour glands *in vivo*.** We tested the responsiveness of CX3CR1 and -CL1 expression to cytokines in pancreatic tumour cells. In DT6606 cells, derived from tumours arising in PdxCre/LSL-Kras<sup>G12D</sup> mouse model, and in K8484 cells, derived from

tumours of PdxCre/LSL-Kras<sup>G12D</sup>-Trp53<sup>R172H</sup> model, the only observed change in CX3CR1 mRNA levels was a decrease following TNF- $\alpha$  plus IFN- $\gamma$  treatment in DT6606 cells. Differently, TNF- $\alpha$  plus IFN- $\gamma$  increased while TGF- $\beta$  downregulated the expression of CX3CL1 mRNA in both murine tumour cell lines, an effect obtained also by IL-1 $\beta$  and IL-6 treatment in K8484 cells (Figure 4).

In human PDAC cells (A8184, AspCI, and MiaPacaII), inflammatory cytokines did not affect the mRNA levels of the receptor, but TNF- $\alpha$  plus IFN- $\gamma$  and IL-1 $\beta$  strongly increased the expression of the ligand. Like in cells derived from PdxCre/LSL-Kras<sup>G12D</sup> and -Kras<sup>G12D</sup>-Trp53<sup>R172H</sup>, IL-6 and TGF- $\beta$  stimulation downregulated the ligand in A8184 and AspCI cells (Figure 4).

The preferential expression of CX3CR1 in precursor lesions and differentiated PDAC, together with the lack of responsiveness to inflammatory signals, suggests that glandular differentiation may affect CX3CR1 status. Accordingly, we tested whether the formation of gland-like structures can induce CX3CR1 expression *in vitro*. DT6606 and K8484 cells propagation as

**Table 2.** Tumour differentiation, peri-neural invasion, and ligand expression are independently associated with CX3CR1 expression

	CX3CR1 expression		
	OR	95% CI	P <sup>a</sup>
<b>Tumour grade</b>			
G1–G2	1.0 Ref.		
G3	0.30	0.12–0.73	0.008
<b>Neural invasion</b>			
No	1.0 Ref.		
Yes	2.63	1.08–6.39	0.03
<b>CX3CL1 expression</b>			
Negative	1.0 Ref.		
Positive	3.99	1.57–10.14	0.003

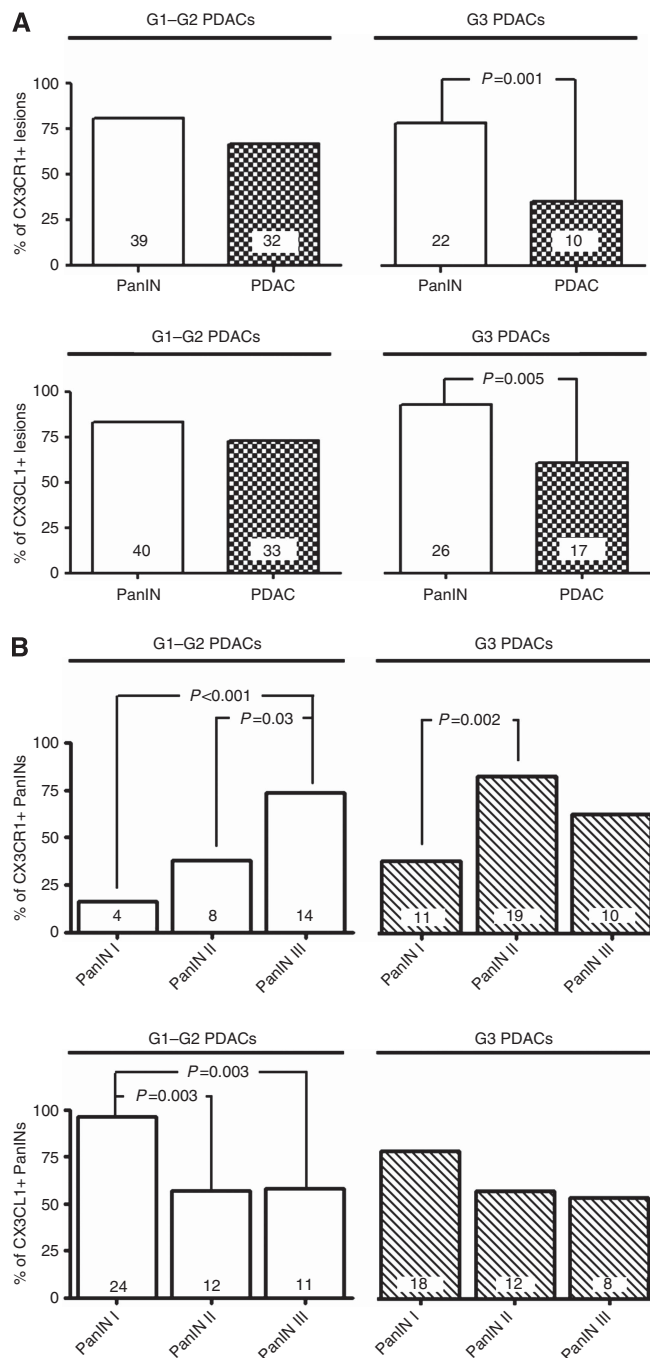
Abbreviations: CI = confidence interval; OR = odds ratio.  
<sup>a</sup>By multivariate logistic regression analysis.

spheroids showed a spontaneous and significant CX3CR1 mRNA and protein increase as compared with monolayer cell culture, in which <5% and 20% of cells, respectively, were CX3CR1<sup>+</sup>. Immunofluorescence revealed a uniform CX3CR1 expression in the cells positioned in the outer portion of the glandular structure formed by DT6606 and K8484 spheroids. The same immunopositivity was detectable in human cancer AspCI cell spheroids, while in A8184 cells, receptor expression was not significantly increased in spheroids with respect to monolayers (Figure 5A–D).

To confirm the association between glandular differentiation and CX3CR1 expression, we grafted pancreatic tumour cells in syngenic C57BL/6 mice. Subcutaneous injection of DT6606 cells in 15 mice and of K8484 cells in 8 mice ensued in tumour growth in 11 (73.3%) and in 8 (100%) animals, respectively. The resulting tumours were well differentiated and showed intense and homogeneous CX3CR1 immunostaining. Differently, PANC02 cells efficiently propagated as undifferentiated cancers in 5 out of 5 mice, but none of these cancers expressed the receptor (Figure 5E).

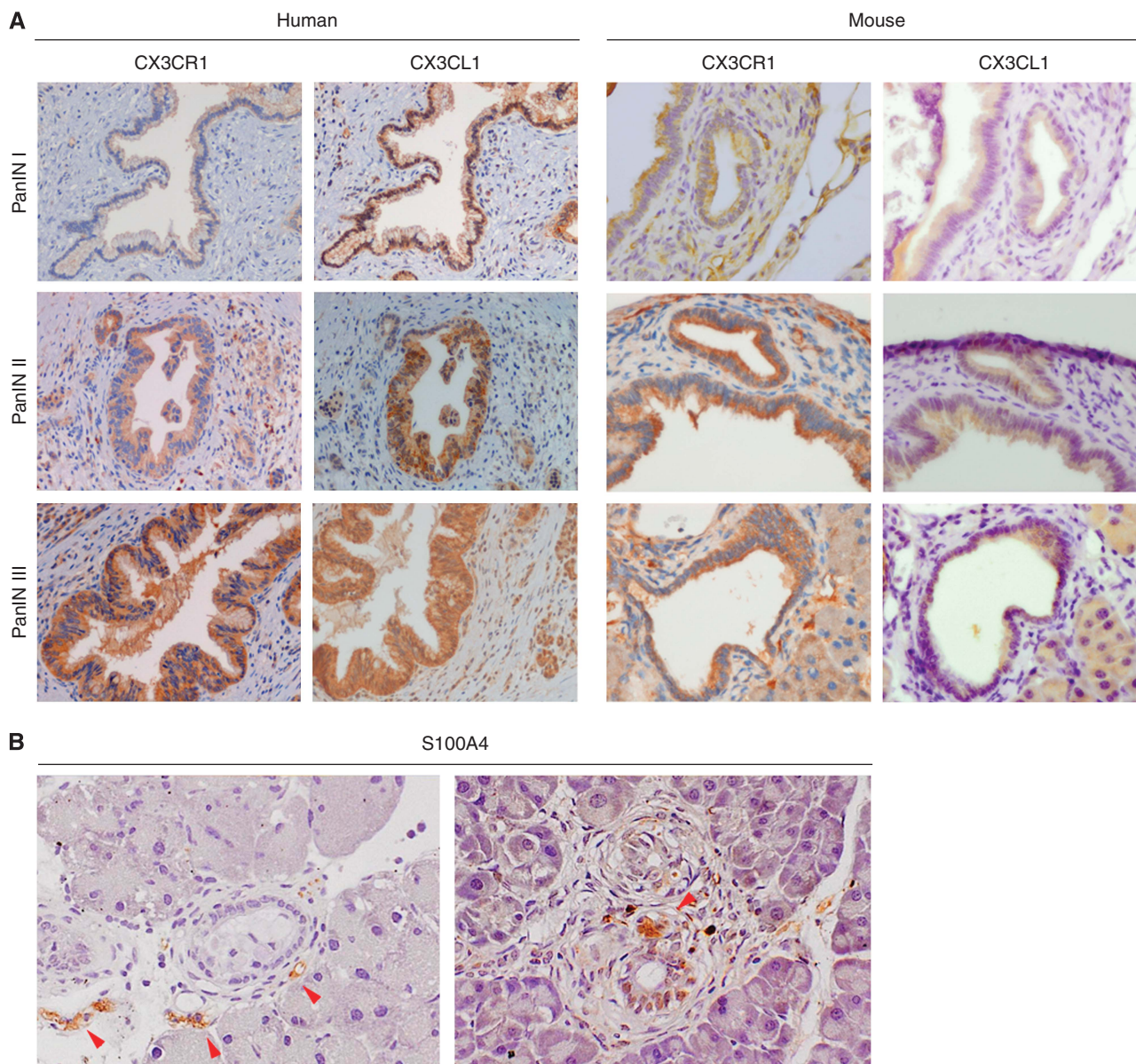
**DISCUSSION**

Our extensive studies in human pancreatic cancer and precursor lesions, in a genetic mouse model, as well as *in vitro* and *in vivo*, elucidate important aspects of CX3-CR1-CL1 expression in pancreatic carcinogenesis. First, we found that human PanINs and well-differentiated PDACs express CX3CR1 more frequently than poorly differentiated cancers. Furthermore, CX3CR1 expression was significantly associated with PNI only in differentiated PDAC. The presence of the receptor already in pre-invasive precursor lesions indicates an early timing of expression in pancreatic carcinogenesis. Such an early appearance was experimentally mirrored by the results in the animal model. Next, the presence of the receptor in differentiated cancers would equip soon these tumours with the capability to follow a chemotactic drive, contributing to PNI (Marchesi *et al*, 2008). On the other side, our findings imply that poorly differentiated PDACs do not take advantage of CX3CL1-driven chemotaxis and adhesion in their spread. Such a difference in the expression of



**Figure 2.** Expression of CX3CR1 and CX3CL1 in precursor lesions according to tumour differentiation and PanIN degree. (A) Comparison of the expression rate of CX3CR1 (upper panels) and CX3CL1 (lower panels) in paired precursor lesions and invasive cancers within the same tissue specimens (n = 76), according to the degree of pancreatic cancer differentiation. Number within bars, number of specimens. (B) Rates of CX3CR1<sup>+</sup> (upper panels) and CX3CL1<sup>+</sup> (lower panels) PanINs according to their degree of dysplasia. Numbers within bars, number of PanINs. G1–G2 tumours, left panels; G3 tumours, right panels; P-values by Fisher’s exact test.

chemotactic receptors depending upon tumour differentiation is not restricted to CX3CR1, as CXCR7 was conversely found to be more frequently expressed in poorly differentiated pancreatic cancers (Gebauer *et al*, 2011). Accordingly, tumour grade, an important determinant in PDAC outcome (Luttges *et al*, 2000; Helm *et al*, 2009), accounts for the differential expression of



**Figure 3.** CX3CR1 and CX3CL1 expression in precursor lesions of pancreatic cancer. **(A)** Left panels, human PanINs; right panels, PanINs of *PdxCre/LSL-Kras<sup>G12D</sup>* mice. Objective magnification,  $\times 20$  (human PanINs), and  $\times 40$  (mice PanINs). **(B)** Precursor lesions adjacent to neural structures. Detection of precursor lesions close to (left panel) or in tight contact with (right panel) S-100<sup>+</sup> neural structures (red arrows) in pancreata of 6-month-old *PdxCre/LSL-Kras<sup>G12D</sup>* mice. Magnification,  $\times 20$ .

chemokine receptors. As the precursor lesions in the context of poorly differentiated PDAC expressed CX3CR1, we can infer that cancer cells no longer express this receptor when clonal selection privileges the outgrowth of undifferentiated clones. It is thus conceivable that the sensitivity of pancreatic cancer to chemokine attraction varies along tumour evolution (Kim *et al*, 2005; Buckle *et al*, 2012), such as changes in tumour differentiation.

The pro-invasive role of CX3CR1, which is foreseeable after the transition from PanIN to invasive cancer, remains otherwise elusive in pre-invasive lesions (Balkwill, 2012). In a mouse model of pancreatic cancer, PanIN cells can cross the basement membrane and delaminate in the microenvironment before any invasive behavior can be detected by histological criteria, indicating that PanINs may already harbour cells with invasive features (Rhim *et al*, 2012). Such invasive and tumour initiating cells from PanINs lacked E-Cadherin (Rhim *et al*, 2012), and in

keeping with this notion we found a marked decrease in E-Cadherin expression in CX3CR1<sup>+</sup> PanINs. Additional studies should assess whether delaminating cells from PanINs express CX3CR1, anticipating the involvement of chemotaxis in PNI.

We have previously reported the association among CX3CR1 expression, marked PNI, and shorter progression-free survival (Marchesi *et al*, 2008). In this independent cohort, we found that patients with CX3CR1<sup>+</sup> PDAC had a longer OS. Perineural invasion is a predictor of tumour recurrence, but tumour grade is the only histological feature of pancreatic cancer associated with worse survival (Helm *et al*, 2009; Shimada *et al*, 2011). Consistently, tumour grade, but not PNI, was a predictor of patient survival in our series, and the tumour expression of CX3CR1 retained prognostic value once adjusted for tumour grade and stage in a Cox model. Thus, the association between CX3CR1 tumour expression and better patient survival may simply reflect

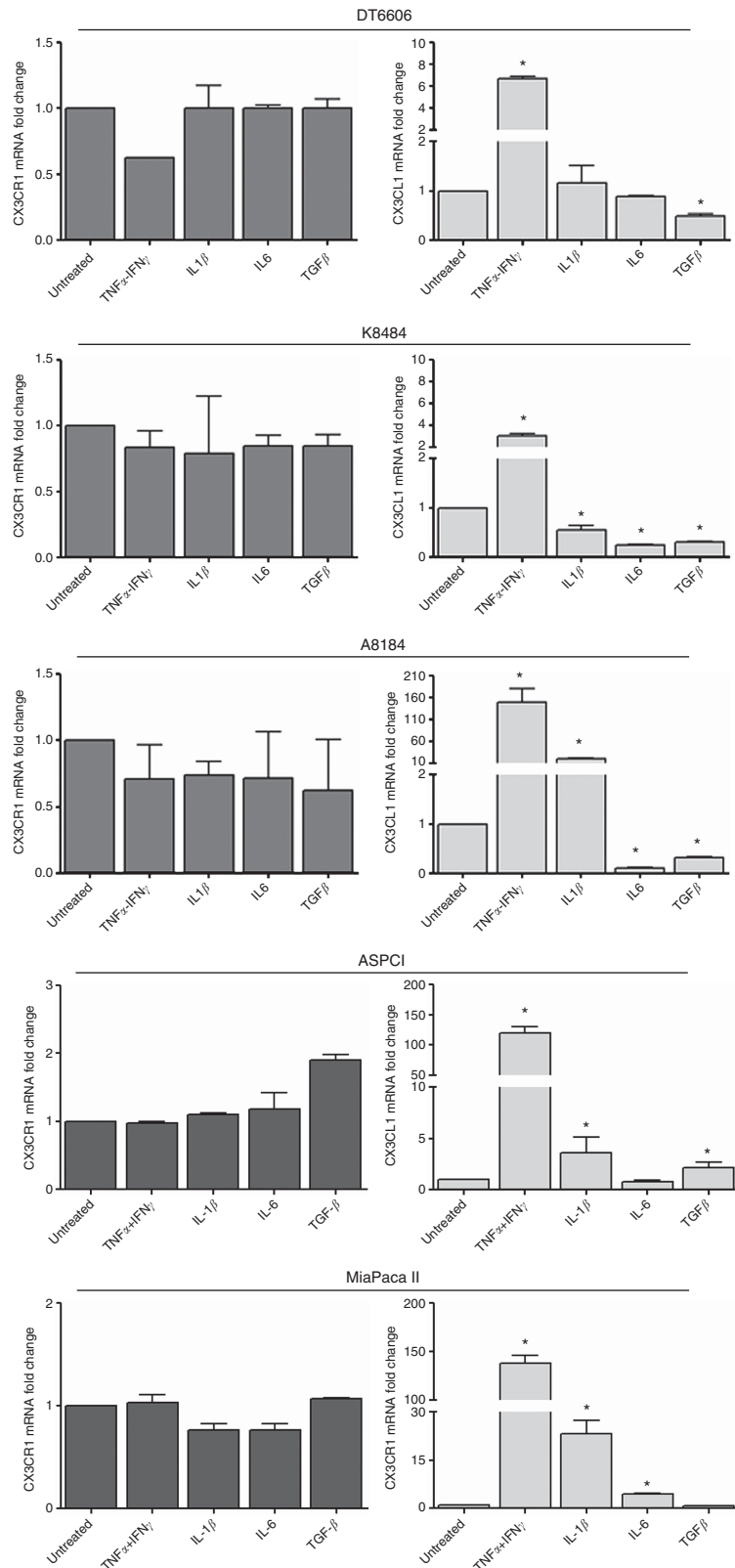
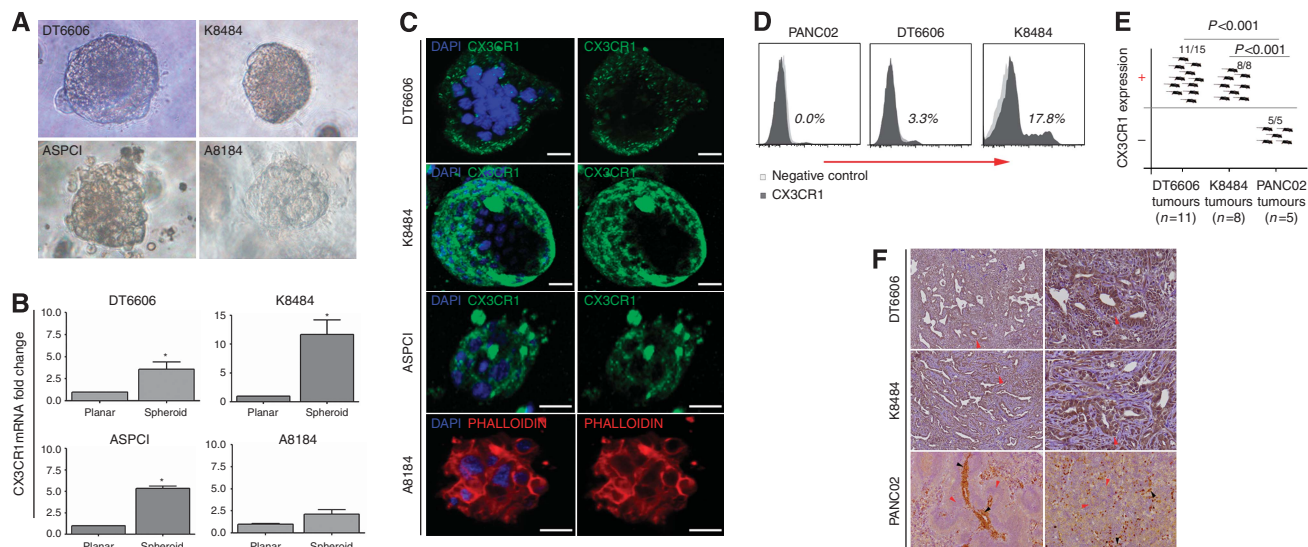


Figure 4. Effects of microenvironmental stimuli on CX3CR1 and CX3CL1 expression in pancreatic tumoral cells. CX3CR1 (left panels) and CX3CL1 (right panels) mRNA fold changes induced by stimulation with TNF- $\alpha$  + IFN- $\gamma$ , IL-1 $\beta$ , IL-6, and by TGF- $\beta$  in mouse DT6606 (*PdxCre/LSL-Kras<sup>G12</sup>* model) and K8484 (*PdxCre/LSL-Kras<sup>G12D</sup>-Trp53<sup>R172H</sup>* model) cells, and in human A8184, AspCI, and MiaPacaII pancreatic cancer cells. \*indicates  $P < 0.05$ .

an earlier disease. Differently, Xu *et al* (2012) reported that CX3CR1 status in PDAC has no prognostic value, while CX3CL1 expression would predict a worse prognosis. In this series, however, radical surgery was not considered, and average survival was

almost half than in our, implying that patients with rather advanced disease have been studied. Considering that the invasive profile drawn by chemokine receptors changes with tumour evolution (Kim *et al*, 2005; Ottaiano *et al*, 2006), our results suggest





**Figure 5.** Effects on CX3CR1 expression of the three-dimensional organisation of pancreatic tumour cells *in vitro*, and of tumour differentiation *in vivo*. **(A)** Spheroids formed by DT6606, K8484, AspCI, and A8184, cells grown in Cultrex 3D bulk. Objective magnification  $\times 40$ . **(B)** CX3CR1 mRNA levels were significantly enhanced as compared with planar cell culture conditions in DT6606 cells (upper-left), K8484 (upper-right) and AspCI (down-left) but not in A8184 cells (down-right), grown as spheroids. **(C)** Immunofluorescence for CX3CR1 performed on spheroids, shows CX3CR1 expression in the outer spheroid portion in DT6606, K8484, and AspCI but not in A8184 cells (stained with phalloidin; scale bar,  $10\ \mu\text{m}$ ). **(D)** Cyto-fluorimetric analysis for CX3CR1 of PANC02, DT6606, and K8484 cell monolayers. **(E)** Graph summarises the rate of tumours growth in C57BL/6 mice and the corresponding expression status of CX3CR1 according to the injected cell line. **(F)** CX3CR1 was expressed by DT6606 and K8484 cells grafted in syngenic C57BL/6 mice and growing as differentiated tumour glands, but not by PANC02 cells growing as undifferentiated cancer (black and red arrows, tumour and inflammatory infiltrating cells, respectively). \*indicates  $P < 0.05$ .

that CX3CR1 could be foreseen as a biomarker paralleling early invasiveness, a feature that innovative imaging techniques might help to address (Buckle *et al*, 2012). If this were the case, then the axis CX3-CR1-CL1 would be a candidate target for interfering with invasion at the transition to invasive cancer.

In the second instance, our experimental results provide support to the associative data. CX3CR1 was unresponsive to inflammatory signalling *in vitro*, but was modulated by the structural organisation of tumour cells, both *in vitro* and *in vivo*. In parallel with findings in human PDAC, mouse tumour DT6606 cells expressed CX3CR1 *in vitro* only if cultured as spheroids, as they did *in vivo* growing as gland-forming tumours. Conversely, growth of undifferentiated PANC02 cells resulted in CX3CR1-negative cancers *in vivo*. Thus, experimental models confirming that tumour differentiation is crucial in setting CX3CR1 expression in tumour cell, reveal that the three-dimensional organisation of neoplastic cells is a crucial factor for the expression of a chemotactic receptor. Although we did not investigate the signalling coupling the organisation of tumour cells with CX3CR1 expression, our data underline that the expression of the receptor is unlikely dependent upon micro-environmental cross-talk, rather being determined by tumour morphological features. Differently, CX3CL1 expression was strongly driven by inflammation *in vitro*. Pro-inflammatory TNF- $\alpha$  plus IFN- $\gamma$  induced a higher increase in CX3CL1 mRNA in *Kras*-mutated than in isogenic but *p53*-mutated ductal cells, confirming that *p53* damage dampens CX3CL1 responsiveness along tumour progression (Shiraishi *et al*, 2000; Algul *et al*, 2007; Jones *et al*, 2008; Sipos *et al*, 2009). These results help to explain for the reduced rate of CX3CL1 expression in PanINs with increasing dysplasia, known to be coupled with *P53* damage (Remmers *et al*, 2011). The high rate of CX3CL1 expression in PanINs-1 is consistent with other data showing that the chemotactic recruiters of leukocytes appear with the first intraepithelial stages of human pancreatic carcinogenesis, decreasing thereafter (Hiraoka *et al*, 2011). The responsiveness

of CX3CL1 to cytokines observed in pancreatic tumour cells also fits with its involvement in the tumour-stroma cross-talk contributing to the desmoplastic reaction (Hiraoka *et al*, 2011), as shown in chronic pancreatitis (Ceyhan *et al*, 2009). Joined with previous findings (Thomas *et al*, 2008), our results firmly indicate that the switch-on of chemotactic molecules is a common and early feature of pancreatic carcinogenesis, encouraging the development of strategies aimed to interfere with the CX3-CR1-CL1 axis to constrain early on the invasiveness of differentiated pancreatic cancer.

#### ACKNOWLEDGEMENTS

We thank Dr DA Tuveson, Cambridge Research Institute, Cambridge, UK, for sharing PdxCre/LSL-Kras<sup>G12D</sup> transgenic mice, and Dr Francesca Bergomas for experiments involving the generation of syngenic tumourgrafts. This research was funded by the Italian Minister of Health: grant 'Tumour stroma interaction, as therapy target in pancreatic cancer' (Ricerca Finalizzata 2005, no. 58). Additional fundings were provided to FN and PC by Italian Association for Cancer Research (AIRC), IG no. 11 043 Ministero della Sanità (Progetto Integrato Oncologia) e Regione Piemonte 'Ricerca Industriale e Sviluppo Precompetitivo' (ONCO-PROT and BIO-PRO), 'Converging Technologies' (BIOTHER), Progetti strategici su tematiche di interesse regionale o sovra regionale (IMMONC), Ricerca Sanitaria Finalizzata, and by AIRC 2011—Bando 5 per mille—Grant no. 12 182, and to FM by AIRC (Grant number MFAG-11 677).

#### CONFLICT OF INTEREST

The authors declare no conflict of interest.

## REFERENCES

- Algul H, Treiber M, Lesina M, Schmid RM (2007) Mechanisms of disease: chronic inflammation and cancer in the pancreas—a potential role for pancreatic stellate cells? *Nat Clin Pract Gastroenterol Hepatol* **4**(8): 454–462.
- Balkwill FR (2012) The chemokine system and cancer. *J Pathol* **226**(2): 148–157.
- Bazan JF, Bacon KB, Hardiman G, Wang W, Soo K, Rossi D, Greaves DR, Zlotnik A, Schall TJ (1997) A new class of membrane-bound chemokine with a CX3C motif. *Nature* **385**(6617): 640–644.
- Buckle T, van Berg NS, Kuil J, Bunschoten A, Oldenburg J, Borowsky AD, Wesseling J, Masada R, Oishi S, Fujii N, van Leeuwen FW (2012) Non-invasive longitudinal imaging of tumor progression using an (111)indium labeled CXCR4 peptide antagonist. *Am J Nucl Med Mol Imaging* **2**(1): 99–109.
- Ceyhan GO, Deucker S, Demir IE, Erkan M, Schmelz M, Bergmann F, Muller MW, Giese T, Buchler MW, Giese NA, Friess H (2009) Neural fractalkine expression is closely linked to pain and pancreatic neuritis in human chronic pancreatitis. *Lab Invest* **89**(3): 347–361.
- Farrow B, Albo D, Berger DH (2008) The role of the tumor microenvironment in the progression of pancreatic cancer. *J Surg Res* **149**(2): 319–328.
- Gebauer F, Tachezy M, Effenberger K, von Loga K, Zander H, Marx A, Kaifi JT, Sauter G, Izbicki JR, Bockhorn M (2011) Prognostic impact of CXCR4 and CXCR7 expression in pancreatic adenocarcinoma. *J Surg Oncol* **104**(2): 140–145.
- Helm J, Centeno BA, Coppola D, Melis M, Lloyd M, Park JY, Chen DT, Malafa MP (2009) Histologic characteristics enhance predictive value of American Joint Committee on Cancer staging in resectable pancreas cancer. *Cancer* **115**(18): 4080–4089.
- Hermann PC, Huber SL, Herrler T, Aicher A, Ellwart JW, Guba M, Bruns CJ, Heeschen C (2007) Distinct populations of cancer stem cells determine tumor growth and metastatic activity in human pancreatic cancer. *Cell Stem Cell* **1**(3): 313–323.
- Hidalgo M (2010) Pancreatic cancer. *N Engl J Med* **362**(17): 1605–1617.
- Hingorani SR, Wang L, Multani AS, Combs C, Deramaudt TB, Hruban RH, Rustgi AK, Chang S, Tuveson DA (2005) Trp53R172H and KrasG12D cooperate to promote chromosomal instability and widely metastatic pancreatic ductal adenocarcinoma in mice. *Cancer Cell* **7**(5): 469–483.
- Hiraoka N, Yamazaki-Itoh R, Ino Y, Mizuguchi Y, Yamada T, Hirohashi S, Kanai Y (2011) CXCL17 and ICAM2 are associated with a potential anti-tumor immune response in early intraepithelial stages of human pancreatic carcinogenesis. *Gastroenterology* **140**(1): 310–321.
- Hwang RF, Moore T, Arumugam T, Ramachandran V, Amos KD, Rivera A, Ji B, Evans DB, Logsdon CD (2008) Cancer-associated stromal fibroblasts promote pancreatic tumor progression. *Cancer Res* **68**(3): 918–926.
- Jones S, Zhang X, Parsons DW, Lin JC, Leary RJ, Angenendt P, Mankoo P, Carter H, Kamiyama H, Jimeno A, Hong SM, Fu B, Lin MT, Calhoun ES, Kamiyama M, Walter K, Nikolskaya T, Nikolsky Y, Hartigan J, Smith DR, Hidalgo M, Leach SD, Klein AP, Jaffe EM, Goggins M, Maitra A, Jacobuzio-Donahue C, Eshleman JR, Kern SE, Hruban RH, Karchin R, Papadopoulos N, Parmigiani G, Vogelstein B, Velculescu VE, Kinzler KW (2008) Core signaling pathways in human pancreatic cancers revealed by global genomic analyses. *Science* **321**(5897): 1801–1806.
- Kim J, Takeuchi H, Lam ST, Turner RR, Wang HJ, Kuo C, Foshag L, Bilchik AJ, Hoon DS (2005) Chemokine receptor CXCR4 expression in colorectal cancer patients increases the risk for recurrence and for poor survival. *J Clin Oncol* **23**(12): 2744–2753.
- Luttges J, Schemm S, Vogel I, Hedderich J, Kremer B, Kloppel G (2000) The grade of pancreatic ductal carcinoma is an independent prognostic factor and is superior to the immunohistochemical assessment of proliferation. *J Pathol* **191**(2): 154–161.
- Mantovani A, Allavena P, Sica A, Balkwill F (2008) Cancer-related inflammation. *Nature* **454**(7203): 436–444.
- Mantovani A, Garlanda C, Allavena P (2010) Molecular pathways and targets in cancer-related inflammation. *Ann Med* **42**(3): 161–170.
- Marchesi F, Monti P, Leone BE, Zerbi A, Vecchi A, Piemonti L, Mantovani A, Allavena P (2004) Increased survival, proliferation, and migration in metastatic human pancreatic tumor cells expressing functional CXCR4. *Cancer Res* **64**(22): 8420–8427.
- Marchesi F, Piemonti L, Fedele G, Destro A, Roncalli M, Albarello L, Doglioni C, Anselmo A, Doni A, Bianchi P, Laghi L, Malesci A, Cervo L, Malosio M, Reni M, Zerbi A, Di Carlo V, Mantovani A, Allavena P (2008) The chemokine receptor CX3CR1 is involved in the neural tropism and malignant behavior of pancreatic ductal adenocarcinoma. *Cancer Res* **68**(21): 9060–9069.
- Olive KP, Jacobetz MA, Davidson CJ, Gopinathan A, McIntyre D, Honess D, Madhu B, Goldgraben MA, Caldwell ME, Allard D, Frese KK, Denicola G, Feig C, Combs C, Winter SP, Ireland-Zecchini H, Reichelt S, Howat WJ, Chang A, Dhara M, Wang L, Ruckert F, Grutzmann R, Pilarsky C, Izeradjene K, Hingorani SR, Huang P, Davies SE, Plunkett W, Egorin M, Hruban RH, Whitebread N, McGovern K, Adams J, Jacobuzio-Donahue C, Griffiths J, Tuveson DA (2009) Inhibition of Hedgehog signaling enhances delivery of chemotherapy in a mouse model of pancreatic cancer. *Science* **324**(5933): 1457–1461.
- Ottaiano A, Franco R, Aiello Talamanca A, Liguori G, Tatangelo F, Delrio P, Nasti G, Barletta E, Facchini G, Daniele B, Di Blasi A, Napolitano M, Ierano C, Calemma R, Leonardi E, Albino V, De Angelis V, Falanga M, Boccia V, Capuzzo M, Parisi V, Botti G, Castello G, Vincenzo Iaffaioli R, Scala S (2006) Overexpression of both CXC chemokine receptor 4 and vascular endothelial growth factor proteins predicts early distant relapse in stage II-III colorectal cancer patients. *Clin Cancer Res* **12**(9): 2795–2803.
- Pan Y, Lloyd C, Zhou H, Dolich S, Deeds J, Gonzalo JA, Vath J, Gosselin M, Ma J, Dussault B, Woolf E, Alperin G, Culpepper J, Gutierrez-Ramos JC, Gearing D (1997) Neurotactin, a membrane-anchored chemokine upregulated in brain inflammation. *Nature* **387**(6633): 611–617.
- Remmers N, Bailey JM, Mohr AM, Hollingsworth MA (2011) Molecular pathology of early pancreatic cancer. *Cancer Biomark* **9**(1-6): 421–440.
- Rhim AD, Mirek ET, Aiello NM, Maitra A, Bailey JM, McAllister F, Reichert M, Beatty GL, Rustgi AK, Vonderheide RH, Leach SD, Stanger BZ (2012) EMT and dissemination precede pancreatic tumor formation. *Cell* **148**(1-2): 349–361.
- Shimada K, Nara S, Esaki M, Sakamoto Y, Kosuge T, Hiraoka N (2011) Intraepithelial nerve invasion as a predictor for recurrence after pancreaticoduodenectomy in patients with invasive ductal carcinoma of the pancreas. *Pancreas* **40**(3): 464–468.
- Shiraishi K, Fukuda S, Mori T, Matsuda K, Yamaguchi T, Tanikawa C, Ogawa M, Nakamura Y, Arakawa H (2000) Identification of fractalkine, a CX3C-type chemokine, as a direct target of p53. *Cancer Res* **60**(14): 3722–3726.
- Sipos B, Frank S, Gress T, Hahn S, Kloppel G (2009) Pancreatic intraepithelial neoplasia revisited and updated. *Pancreatology* **9**(1-2): 45–54.
- Thomas RM, Kim J, Revelo-Penafiel MP, Angel R, Dawson DW, Lowy AM (2008) The chemokine receptor CXCR4 is expressed in pancreatic intraepithelial neoplasia. *Gut* **57**(11): 1555–1560.
- Vonlaufen A, Joshi S, Qu C, Phillips PA, Xu Z, Parker NR, Toi CS, Pirola RC, Wilson JS, Goldstein D, Apte MV (2008) Pancreatic stellate cells: partners in crime with pancreatic cancer cells. *Cancer Res* **68**(7): 2085–2093.
- Wang J, Seethala RR, Zhang Q, Gooding W, van Waes C, Hasegawa H, Ferris RL (2008) Autocrine and paracrine chemokine receptor 7 activation in head and neck cancer: implications for therapy. *J Natl Cancer Inst* **100**(7): 502–512.
- Xu X, Wang Y, Chen J, Ma H, Shao Z, Chen H, Jin G (2012) High Expression of CX3CL1/CX3CR1 Axis Predicts a Poor Prognosis of Pancreatic Ductal Adenocarcinoma. *J Gastrointest Surg* **16**(8): 1493–1498.

This work is published under the standard license to publish agreement. After 12 months the work will become freely available and the license terms will switch to a Creative Commons Attribution-NonCommercial-Share Alike 3.0 Unported License.

Supplementary Information accompanies this paper on British Journal of Cancer website (<http://www.nature.com/bjc>)