

RESEARCH ARTICLE

Peripheral nerve abnormality in HIV leprosy patients

Marilia Brasil Xavier^{1,2,3*}, Mariana Garcia Borges do Nascimento¹, Keila de Nazare Madureira Batista⁴, Danusa Neves Somensi², Fernando Octavio Machado Juca Neto², Thomaz Xavier Carneiro¹, Claudia Maria Castro Gomes³, Carlos Eduardo Pereira Corbett³

1 Nucleo de Medicina Tropical, Universidade Federal do Para, Belem, Para, Brazil, **2** Centro de Ciencias Biologicas e da Saude, Universidade do Estado do Para, Belem, Para, Brazil, **3** Faculdade de Medicina FMUSP, Universidade de Sao Paulo, Sao Paulo, Sao Paulo, Brazil, **4** Faculdade de Fisioterapia, Universidade Federal do Para, Belem, Para, Brazil

* mariliabxavier@gmail.com



Abstract

Background

The geographical overlap of HIV (human immunodeficiency virus) and leprosy infection has become increasingly frequent and worrying, bringing many clinical issues. Peripheral neuropathy is very frequent in leprosy because of the predilection of its etiologic agent by Schwann cells of the peripheral nervous system, and it also affects individuals with HIV as one of the most common neurological manifestations.

Methodology/Principal findings

The present study compared a cohort of 63 patients diagnosed with leprosy and coinfecting with HIV with a cohort of 64 patients with leprosy alone, who were followed at the outpatient clinic of the Nucleus of Tropical Medicine of the Federal University of Pará, Brazil. We observed that HIV-coinfecting leprosy patients presented greater odds of overall peripheral nerve damage (nerve function impairment—NFI) than patients with leprosy alone. More sensitive damage was observed, especially in patients coinfecting with multibacillary forms. Leprosy patients coinfecting with HIV presented higher chances of motor damage with improvement over time using multidrug therapy (MDT) and highly active antiretroviral therapy (HAART), along with a greater extent of damage and occurrence of neuritis. The data suggest that in addition to patients presenting possible damage caused by leprosy, they also had a greater damage gradient attributable to HIV disease, but not related to HAART because most of these patients had been on the treatment for less than a year. Neuritis was treated with prednisone at doses recommended by the WHO, and coinfecting patients had the highest rate of clinical improvement in the first 60 days.

Conclusions/Significance

The clinical characteristics of the two diseases should be considered in leprosy patients coinfecting with HIV for better diagnosis and treatment of peripheral neuropathy. We suggest

OPEN ACCESS

Citation: Xavier MB, do Nascimento MGB, Batista KdNM, Somensi DN, Juca Neto FOM, Carneiro TX, et al. (2018) Peripheral nerve abnormality in HIV leprosy patients. *PLoS Negl Trop Dis* 12(7): e0006633. <https://doi.org/10.1371/journal.pntd.0006633>

Editor: Pamela L. C. Small, University of Tennessee, UNITED STATES

Received: March 20, 2018

Accepted: June 22, 2018

Published: July 18, 2018

Copyright: © 2018 Xavier et al. This is an open access article distributed under the terms of the [Creative Commons Attribution License](http://creativecommons.org/licenses/by/4.0/), which permits unrestricted use, distribution, and reproduction in any medium, provided the original author and source are credited.

Data Availability Statement: All relevant data are within the paper and its Supporting Information files.

Funding: This study was funded by the Amazonian Foundation for Study and Research (<http://www.fapespa.pa.gov.br/>). MBX is the author who received the funding. The funders had no role in study design, data collection and analysis, decision to publish, or preparation of the manuscript.

Competing interests: The authors have declared that no competing interests exist.

that new simplified assessment tools that allow the evaluation of the NFI of these patients be developed for use in the service.

Author summary

Coinfections of leprosy and HIV are a challenge for clinical management, particularly concerning peripheral neuropathy, which is common in leprosy and is also present in HIV infection. We conducted a clinical follow-up of leprosy patients coinfecting with HIV and compared them to patients with leprosy alone and observed that coinfecting patients were more likely to present overall peripheral nerve damage (nerve function impairment—NFI), especially in multibacillary patients, where motor damage was largely responsible for this impairment. Throughout the period using multidrug therapy (MDT) and highly active antiretroviral therapy (HAART), the development of the damage, along with the occurrence of neuritis and complaints, decreased considerably. Thus, the data suggest that in addition to patients presenting possible damage caused by leprosy, they also have a greater damage gradient attributable to the disease due to HIV but not related to HAART. Another important point was the therapeutics used for neuritis with prednisone at doses recommended by the WHO, in which the coinfecting patients had the highest rate of clinical improvement in the first 60 days. The characteristics of the two diseases should be considered in the understanding and clinical management of peripheral nerve alterations in leprosy patients coinfecting with HIV. In addition, it became clear that further NFI assessment tests should be used with these patients.

Introduction

Leprosy and human immunodeficiency virus (HIV) infection are two diseases of public health importance in the world. The increasing geographical overlap of these endemic and pandemic diseases may increase the number of individuals with both diseases in the world. In 2016, Brazil had an overall new case detection rate in leprosy of 12.2/100,000 inhabitants, and Pará had an overall new case detection rate of 40.4/100,000 inhabitants, which is considered hyperendemic [1].

The acquired immunodeficiency syndrome (AIDS) caused by HIV is an extraordinary type of public health crisis; it is both an emergency and a long-term problem. In 2016, 37,884 cases of the infection were reported, with an incidence rate of syndrome of 18.5 cases per 100,000 inhabitants. In 2016, Pará had the 4th highest detection rate among Brazilian states, and its capital, Belém, had the 3rd highest detection rate (55.4/100,000 inhabitants) among Brazilian capitals [2]. The geographical overlap of the two diseases has become increasingly present and worrisome, which raises questions about how the health professionals address the clinical management and therapeutics of an individual coinfecting by both diseases [3–6].

Leprosy is considered a disease of the skin and peripheral nerve trunks [7]. Neural lesions are the result of changes in the sensory, motor and autonomic systems. Leprosy is a spectral disease, ranging from tuberculoid leprosy, in which the host has good cell-mediated immunity against *M. leprae* with limited disease, to the lepromatous form, in which the host is anergic to *M. leprae* and the organism proliferates in the skin, peripheral nerves and other systems. At the center of this spectrum are intermediate forms called borderlines [8,9].

At the beginning of the HIV epidemic, it was anticipated that this infection would lead patients to develop the most severe form of leprosy. However, this has not occurred, and studies have begun to note that HIV/leprosy coinfection seems to be directly related to the immune improvement provided by the introduction of antiretroviral therapy (HAART) and therefore, leading to the development of the milder and limited form of the disease [10–15].

Some studies report a higher prevalence of tuberculoid (TT) and borderline-tuberculoid (BT) forms and a higher occurrence of reactions and neuritis in coinfecting patients [4–5,16]. Therefore, these patients may potentially have a greater risk of prolonged reactions and neural damage, also due to other neurotropic infections and to the toxicity of antiretroviral drugs and in several treatments of comorbidities [17,18].

In the case of *M. leprae* infection, several mechanisms can trigger nervous aggression, depending on the clinical forms and the different periods of the disease. They are essentially established in two ways: an early phase, which occurs without inflammation, likely by the action of the bacillus in the nerves, and a late phase, in which there is an inflammatory process resulting from the action of the body in response to the presence of the bacillus [19–22].

Bacillary invasion and, especially, the inflammatory process of the peripheral nerves cause sensory-motor damage, which generates symptoms of paresthesia and hyperalgesia, although in some cases, the alterations in pain, thermal and tactile sensitivity occur quietly [23].

Neurological changes associated with HIV infection have decreased with the use of HAART. However, some complications continue to have a serious impact on the lives of these patients [17]. Peripheral neuropathy is very common in leprosy because of the predilection of its etiologic agent for Schwann cells of the peripheral nervous system; it also affects individuals with HIV/AIDS at a frequency ranging from 30% to 50%, which makes it one of the most common neurological manifestations in these patients. The neuropathy can occur at any stage of HIV infection, and with the passage of time and prolonged use of HAART, peripheral neuropathies tend to be more frequent [17,18,24].

Corticosteroids are among the drugs of choice for the treatment of leprosy neuropathy and are widely used to treat acute nerve damage. These drugs have been used to treat inflammation associated with leprosy neuropathy since the 1970s. Unfortunately, however, follow-up studies are scarce, and coinfecting patients are very rare [25].

Investigations on the clinical and therapeutic aspects of HIV and leprosy coinfection with emphasis on neural damage are valuable tools for the management of this type of patient and are also important for preventive action to combat the incapacities that are the consequences of nerve involvement. Thus, this study aimed to describe the clinical and therapeutic aspects of neurological alterations, such as sensory and motor damage, neuritis, neuropathic pain and complaints related to neural damage in patients coinfecting with HIV and leprosy.

Methods

Study design

This is a comparative study of two historical clinical cohorts of patients diagnosed with leprosy and seen at the dermatology outpatient clinic of the Tropical Medicine Nucleus of the Federal University of Pará (NMT/UFPA), located in the city of Belém, capital of the state of Pará, Brazil. The first cohort was composed of 63 leprosy patients coinfecting with HIV, and the second cohort was composed of 64 leprosy patients who were not HIV coinfecting from 2007 to 2017. Patient follow-up was performed on average up to 12 months for paucibacillary and 24 months for multibacillary leprosy patients, even after stopping multidrug therapy (MDT).

Inclusion criteria

We included patients from 18 to 70 years of age diagnosed with leprosy and treated with MDT as recommended by the Ministry of Health [26], classified according to Ridley and Jopling [8], and diagnosed with HIV/AIDS according to the Brazilian Ministry of Health [27].

Study procedures

Outcomes definitions. Neuritis: nerve damage with altered sensory and/or motor function with variable pain symptomatology; Acute neuritis: intense pain occurring spontaneously or during palpation of the nerve trunks, with evolution up to 3 months; Chronic neuritis: nerve damage of insidious onset and slow progression with variable pain symptomatology and over 3 months; Silent neuritis: alteration of sensory and/or motor function in the absence of pain; Neuropathic pain: presence of symptoms (pain, allodynia, hyperpathy, paresthesias) without progressive loss of neural, sensory and motor function; Sensitive damage: result of the sensitivity test with Semmes Weinstein monofilaments exceeding 2 g; Motor damage: Voluntary Muscle Test result equal to or less than 4; Nerve Function Impairment (NFI): nerves that presented some alteration of sensory and/or motor function; Clinical complaint related to sensory damage: pain or paresthesias (numbness, tingling, needling, shock and burning); Clinical improvement of neuritis: clinical improvement in four weeks with corticoid use.

Patients and methods. The patients were submitted to dermatoneurological examination by dermatologists, infectologists, neurologists, nurses and physical therapists. HIV and AIDS infection and the use of HAART were defined according to the guidelines of the Brazilian Ministry of Health with positive serology ELISA and western blot, flow cytometry for peripheral blood CD4 counts and criteria for AIDS (defined as a CD4 T lymphocyte count of 200 cells/mL and/or clinical conditions that define the disease) (MS, 2017). The diagnosis and classification of leprosy were made according to clinical criteria [28], complementary bacilloscopy and histopathology exams [9] and the WHO Operational Classification [29].

NFI considered the sensory damage that was assessed by sensitivity tests on the nerves most commonly affected in leprosy (ulnar, median, radial, common fibular and posterior tibial), performed using Semmes Weinstein monofilament, in which individuals with sensory damage were considered those who did not feel the 2-g filaments. Motor damage was evaluated by the manual muscle strength test, which is also related to the nerves present in the evaluation, and motor damage was considered when the patient presented a degree of muscle strength of less than or equal to 4 (paralyzed or weak) [28]

Patients with paucibacillary leprosy (PB) patients, that means TT and BT forms, were treated for 6 months with rifampicin and dapsone, and multibacillary leprosy (MB) patients—Borderline-Borderline (BB), Borderline-Lepromatous (BL) and Lepromatous-Lepromatous (LL) forms—were treated for 12–24 months with rifampicin, clofazimine and dapsone. Primary neural patients (PNL) were classified as PB or MB according to the number of affected nerve trunks. In case of neuritis, steroids were administered at the dose of 1–2 mg per kg of body weight per day and were slowly withdrawn according to clinical parameters [28]

Statistical analysis. The Statistical Package for Social Sciences (SPSS), version 22.0, was used, with the Mann-Whitney test for comparison of medians, the chi-square test and the G-test when pertinent, along with calculations of odds ratios and relative risk. The significance level was 0.05, and the confidence interval was 95%. The missing data were taken from the calculation.

Ethics statement. The norms for research in human established by Resolution 466/12 of the National Health Council were followed, as were the recommendations of the ethics committee in human research at the University of São Paulo (USP), with approval granted in

accordance with Opinion No. 2.060.860. All study participants provided written informed consent in agreeing to participate in the research. This study follows the STROBE (STrengthening the Reporting of OBServational studies in Epidemiology) guidelines and the STROBE checklist is included ([S1 Checklist](#)).

Results

The study included a sample of 63 HIV/leprosy-coinfected patients and 64 HIV-free leprosy patients. Men (n = 80, 63.0%) with a mean age of 40 years were the most affected in both groups. Paucibacillary forms were more frequent in the coinfecting patients, and multibacillary forms were more frequent in the non-coinfected patients. The LL clinical form and the primary neural form were not observed in coinfecting patients ([Table 1](#)).

In the cohort of coinfecting patients, most were using HAART (n = 55, 87.3%); only 8 (12.7%) patients were not using the therapy. The most frequent onset of leprosy in relation to HAART was within 12 months of the introduction of therapy. Only 13 (26%) patients presented leprosy after 12 months of HAART ([S1 Table](#)).

Coinfecting patients presented a slightly higher chance of developing sensory damage but without significant differences. However, when considering bacillary disease, multibacillary coinfecting patients were more likely to evolve with sensitive damage than paucibacillary coinfecting patients. The motor damage was very obvious in coinfecting patients diagnosed until the end of MDT, and a decrease was observed at that time. This fact is also observed in the extent of this damage, which was significantly higher in the coinfecting patients ([Table 2](#)).

Considering the clinical forms of the leprosy spectrum according to Ridley Jopling and according to WHO, a greater risk of evolving with any neural damage was not observed;

Table 1. Distribution of coinfecting and non-coinfected patients according to demographical and clinical variables.

Variables	No. observations (%) or Mean ± SD			Statistical test (95% CI) ^{†*}
	Coinfecting	Non-coinfected	Total	
Observations (n = 127)	63 (49.6)	64 (50.4)	127 (100)	
Gender				
Male	45 (71.3)	35 (54.7)	80 (63.0)	Chi-square, p > 0.05
Female	18 (28.7)	29 (45.3)	47 (37.0)	
Age (years) ^a	39.7 ± 9.6	40.6 ± 14.8	40.2 ± 12.5	0.87 (-3.51–5.26)
Clinical Form				
TT	17 (27.0)	16 (25.0)	33 (26.0)	
BT	20 (31.8)	12 (18.8)	32 (25.2)	
BB	20 (31.8)	24 (37.5)	44 (34.7)	
BL	6 (9.5)	5 (7.8)	11 (8.7)	G-test, p > 0.05 ^b
LL	0 (0.0)	2 (3.1)	2 (1.6)	
PNL	0 (0.0)	5 (7.8)	5 (3.9)	
Operational Classification				
Paucibacillary (TT, BT, PNL)	37 (58.7)	29 (45.3)	63 (49.6)	Chi-square, p > 0.05
Multibacillary (BB, BL, LL, PNL)	26 (41.3)	35 (54.7)	64 (50.4)	

[†] Exact p-values for estimated comparison reported only when statistically significance was achieved; non-significance indicated through confidence intervals (95% CI) containing their null values;

* Non-coinfected patients used as comparison group (baseline);

^a Mean difference with Two-sample t test using Welch's approximation.

^b Sample comprised by all clinical forms except neural and indeterminate, totalising 120 patients.

<https://doi.org/10.1371/journal.pntd.0006633.t001>

Table 2. Logistic regression for Adjusted Odds Ratios (OR) of occurrence of sensitive and motor neural damage and modified poisson regression for Adjusted Rate Ratio (RR) of sensitive and motor nerve damage rate.

Predictors variables	OR, (95% CI), p-value				Nerve Damage Rate ^a RR (95% CI), p-value
	All Phases ^b (n = 375)	Enrollment (n = 127)	During MDT (n = 127)	Discharge of MDT (n = 127)	All Phases ^b (n = 381)
Occurrence of Sensitive Nerve Damage					
Groups					
Leprosy	1 [Reference]	1 [Reference]	1 [Reference]	1 [Reference]	1 [Reference]
Coinfected	1.44 (0.9–2.32), >.05	1.69 (0.74–3.83), >.05	1.86 (0.81–4.3), >.05	0.95 (0.41–2.2), >.05	1.11 (0.9–1.38), >.05
WHO Classification					
Paucibacillary (TT, BT, PNL)	1 [Reference]	1 [Reference]	1 [Reference]	1 [Reference]	1 [Reference]
Multibacillary (BB, BL, LL, PNL)	4.3 (1.2–15.37), .025	2.95 (0.34–25.72), >.05	6.52 (0.58–72.9), >.05	5.65 (0.5–64.47), >.05	3.48 (1.96–6.17), <.001
Occurrence of Motor Nerve Damage					
Groups					
Leprosy	1 [Reference]	1 [Reference]	1 [Reference]	1 [Reference]	1 [Reference]
Coinfected	3.07 (1.8–5.23), <.001	7.05 (2.21–22.52), .001	3.29 (1.33–8.13), .01	1.68 (0.71–4), >.05	2.01 (1.5–2.71), <.001
WHO Classification					
Paucibacillary (TT, BT, PNL)	1 [Reference]	1 [Reference]	1 [Reference]	1 [Reference]	1 [Reference]
Multibacillary (BB, BL, LL, PNL)	2.02 (0.58–6.99), >.05	1.62 (0.19–13.69), >.05	2.03 (0.22–18.43), >.05	2.51 (0.29–21.5), >.05	1.55 (0.81–2.95), >.05

^a Patients Nerve Damage Rate calculated as the number of nerves with sensitive and/or motor damage (NFI) by the total of nerves examined (10 nerves per patient);

^b All phase analysis Adjusted by study phase

<https://doi.org/10.1371/journal.pntd.0006633.t002>

however, for patients of the same bacillary and clinical forms in both groups, coinfecting patients experienced 18–61% more extensive neural impairment (Table 3).

Coinfecting patients had a higher prevalence of neuritis (33.3%) at the time of diagnosis than those with leprosy alone, regardless of the clinical form (WHO) (17.2%). Coinfecting patients appeared to evolve better from acute and chronic neuritis and remain with silent neuritis, differently from non-coinfecting patients. Acute neuritis was more prevalent in coinfecting patients at the beginning of treatment, with 9.5% (n = 6) versus 4.7% among non-coinfecting patients (n = 3) (S2 Table).

Neuropathic pain occurred in a multibacillary form patient in each group at the end of treatment. These observations may have been impaired by the number of patients.

Considering NFI, the average number of affected nerve trunks was significantly higher in the coinfecting group at the time of diagnosis, but throughout the treatment and at the end of MDT, this difference was not observed (Table 4).

Regarding the complaints related to sensory impairment, the prevalence of sensory complaints was slightly higher in the coinfecting than in the non-coinfecting group, with significant improvement in this group over time, different from patients with leprosy alone. Follow-up losses may have impaired the analysis (S3 Table).

The use of corticosteroids alone was the regimen most used in the treatment of neuritis, followed by corticosteroids and amitriptyline and corticosteroids and paracetamol. In the comparison of the clinical improvement outcome in patients from each cohort who used corticosteroids alone or in association with an analgesic and/or antidepressant, a good response was observed in the coinfecting patient group, with a higher frequency of patients

Table 3. Logistic regression for Adjusted Odds Ratios (OR) of occurrence of any^a nerve function impairment and modified poisson regression for Adjusted Rate Ratio (RR) of nerve damage rate.

Predictors variables	Occurrence of NFI				Nerve Damage Rate ^b
	OR, (95% CI), p-value				RR (95% CI), p-value
	All Phases ^c (n = 375)	Enrollment (n = 125)	During MDT (n = 125)	Discharge of MDT (n = 125)	All Phases ^b (n = 381)
Groups					
Leprosy	1 [Reference]	1 [Reference]	1 [Reference]	1 [Reference]	1 [Reference]
Coinfected	1.52 (0.97–2.38), >.05	2.33 (1.06–5.11), .034	1.75 (0.79–3.91), >.05	0.87 (0.4–1.91), >.05	1.41 (1.18–1.68), < .001
WHO Classification					
Paucibacillary (TT, BT, PNL)	1 [Reference]	1 [Reference]	1 [Reference]	1 [Reference]	1 [Reference]
Multibacillary (BB, BL, LL, PNL)	2.0 (0.56–7.1), >.05	1.35 (0.16–11.21), >.05	2.38 (0.19–30.09), >.05	2.44 (0.29–20.71), >.05	2.27 (1.46–3.51), < .001
Clinical Presentation					
TT	1 [Reference]	1 [Reference]	1 [Reference]	1 [Reference]	1 [Reference]
BT	1.2 (0.63–2.27), >.05	1.24 (0.41–3.73), >.05	1.5 (0.5–4.55), >.05	0.93 (0.29–2.91), >.05	1.11 (0.81–1.52), >.05
BB	1.74 (0.43–7.06), >.05	2.48 (0.24–26.09), >.05	2.22 (0.14–34.66), >.05	1.04 (0.1–10.96), >.05	1.18 (0.71–1.96), >.05
BL	2.04 (0.44–9.38), >.05	2.08 (0.16–27.1), >.05	1.72 (0.09–32.32), >.05	2.57 (0.19–35.64), >.05	1.07 (0.62–1.86), >.05
LL	1 [empty]	1 [empty]	1 [empty]	1 [empty]	2.87 (1.52–5.43), .001
PNL	2.91 (0.57–14.94), >.05	4.35 (0.31–61.57), >.05	3.96 (0.11–138.13), >.05	1.61 (0.11–22.97), >.05	1.48 (0.82–2.68), >.05

^a Any neural damage positive events defined as the occurrence of either sensitive or motor nerve damage;

^b Patients Nerve Damage Rate calculated as the number of nerves with motor, sensitive or both motor and sensitive damage by the total of nerves examined (10 nerves per patient);

^c All phase analysis Adjusted by study phase

<https://doi.org/10.1371/journal.pntd.0006633.t003>

with faster regression, in the three moments of observation, but without a significant difference in relation to non-coinfected patients (Fig 1).

Discussion

Peripheral nerve changes are the main cause of disability, pain and paresthesias and have an impact on the quality of life of leprosy patients [30–32]. Inflammatory reactive states of leprosy are the main cause of nerve changes in these patients, but there are other pathological mechanisms capable of causing such alterations [4–5, 30,33].

HIV infection has a large number of neurological manifestations that occur in the amplitude of the immune spectrum of the disease and in the course of the disease [17, 33–36].

In this study, a cohort of coinfecting leprosy patients was observed using simplified evaluation tests, widely validated for the evaluation of sensory and motor peripheral damage in leprosy. The great question arising from the empirical reality and whose answer is fundamental to the management of the patient is to know how this nerve damage behaves in patients who have HIV in addition to leprosy. With the interaction between these endemic and pandemic disease, the complexity of the interfering factors is a challenge for researchers [3, 30, 37–38].

Our demographic results demonstrate agreement with the literature and also indicate that leprosy/HIV is the most common coinfection in men of young adult age with an average of 40 years [37]. Paucibacillary forms were more frequent in the coinfecting group, and multibacillary forms were more frequent in the non-coinfected group, confirming what has been reported in the literature [4,5,13,39–41]. In fact, the diagnosis of leprosy in patients with HIV infection has been associated with the improvement of patient immunity after the initiation of HAART and was characterized by elevated CD4⁺ T cells in these patients [11–12, 42–44].

Overall nerve function impairment (NFI) was significantly higher in coinfecting patients. Both the sensory damage and motor damage usually occurred more often in patients who, in

Table 4. Distribution of coinfecting and non-coinfecting patients according to the mean of NFI at all the moments of study.

Variables	No. Observation (%), Mean ± SD					Statistical test
	Coinfecting		Non-coinfecting		Total	
	PB	MB	PB	MB		
Observations (n = 127)	37 (58.7)	26 (41.3)	29 (45.3)	35 (54.7)	127 (100)	
Enrollment	0.97 ± 1.21	2.48 ± 2.79	0.68 ± 1.94	2.00 ± 2.27	1.53 ± 2.21	Mann-Whitney ¹ , p = 0.0355
During MDT	0.52 ± 1.35	1.75 ± 2.47	0.65 ± 1.81	2.22 ± 1.94	1.30 ± 2.03	Mann-Whitney ² , p>0.05
Discharge of MDT	0.58 ± 1.15	1.96 ± 2.62	0.44 ± 0.86	2.05 ± 2.07	1,27 ± 1,94	Mann-Whitney ³ , p>0.05

¹ intergroup analysis of paucibacillary coinfecting and non-coinfecting at the time of enrollment;

² intergroups analysis for the mean of NFI at during MDT to paucibacillary and multibacillary patients;

³ intergroup analysis for the mean of NFI at discharge of MDT to paucibacillary and multibacillary patients.

<https://doi.org/10.1371/journal.pntd.0006633.t004>

addition to having possible damage due to leprosy, also had a greater gradient attributable to HIV disease. Thus, the clinical characteristics of the two diseases should be considered to better understand this damage [30–31,33,45–46].

Other studies in our group, using other tools and some instigating data, point to the need for simplified but more specific tools for the management of coinfecting patients, especially in areas where diseases occur endemically [1–2,6], whose data are available and not yet published [45,46].

The mechanisms of peripheral damage widely studied in leprosy are still difficult to understand, diagnose and treat [30,33,36,47]. The university outpatient clinic where the research was conducted has been a reference clinic for the treatment of leprosy for over 20 years and is currently also a reference to the coinfecting patients. Thus, the approaches to the diagnosis of damage and patient management are made from the perspective of the knowledge of the

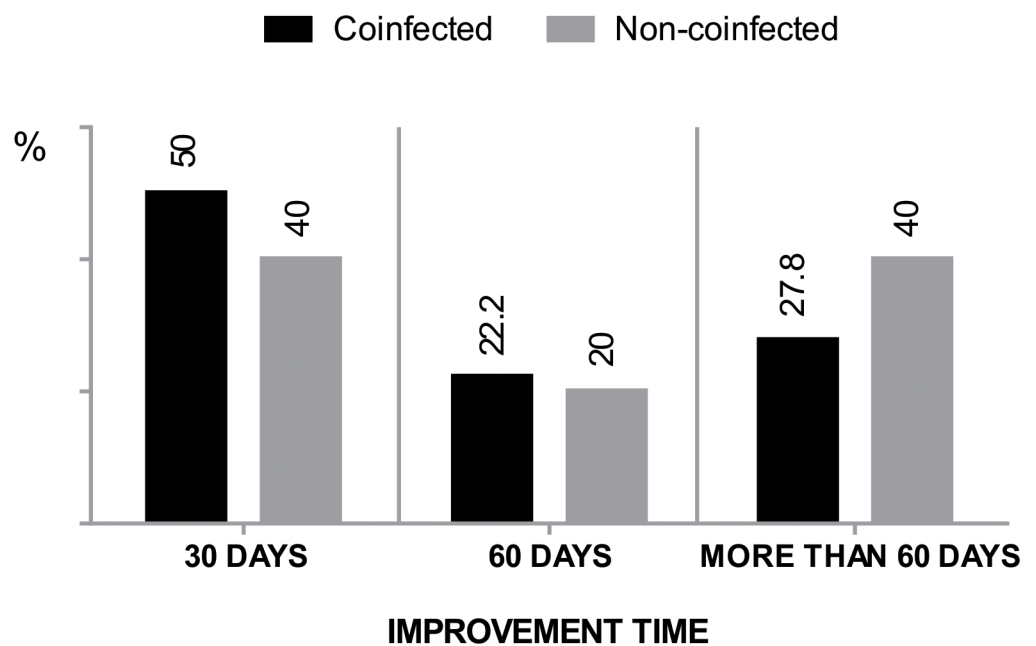


Fig 1. Time of neuritis improvement after use of drug therapy in coinfecting and non-coinfecting patients. * G-test, p>0.05.

<https://doi.org/10.1371/journal.pntd.0006633.g001>

peripheral nerve damage of leprosy patients, in the same way that other authors have described in the literature [31, 45–46].

The neuropathies associated with HIV disease described in the literature include Symmetric Distal Sensorimotor Polyneuropathy, which is the most common form and occurs mainly in patients who do not use HAART and in later stages of the disease [48–49]. Toxic neuropathies occur due to mitochondrial changes and occur in patients taking HAART [48]. Progressive polyradiculopathies have also been described in patients before the HAART era and currently occur less frequently and in the later phase of the disease. The condition is directly related to cytomegalovirus infection and CD4⁺ lymphocyte counts below 200 cells/mm³ [48,50]. Demyelinating inflammatory polyneuropathies may occur in the early stages of the disease in asymptomatic patients and may occur acutely or chronically, the latter being the most common [48, 50].

The patients described herein were mostly using HAART (87%), and more than half of these had used HAART for less than one year. Considering that these patients and those who were not using HAART at the diagnosis of leprosy presented sensory and motor alterations, the damage does not seem attributable to the neurotoxicity of antiretroviral drugs, leading us to believe that NFI could be the sum of the sensory and motor damage caused by leprosy plus the motor sensory damage caused by HIV described in the literature in patients who do not use HAART [48,49]. This type of HIV neuropathy tends to improve with the use of HAART, which could explain the improvement in NFI during the moments of study observation, which, although they had been guided by MDT, also reflect the use of HAART over time.

We know that AIDS is a disease that has comorbidities, with overall weight loss being a criterion for defining the disease. Therefore, these patients who have been diagnosed with AIDS could have repercussions in the evaluation of certain factors, such as muscle strength. The same may occur in later stages of the disease in patients taking antiretroviral drugs where neurotoxicity and the impact of drugs on muscle loss (lean mass) could also affect muscle strength. However, the loss of lean mass occurs much later, after approximately 90 months of HAART use [51–53].

However, greater motor damage was evident in patients coinfecting at the time of diagnosis until stopping MDT, decreasing at the end, and in this case regardless of bacillary activity. The months of observation of MDT are also months in which the patient was using HAART, which means an overall improvement in the patient's condition and certainly of afflictions that could have been causing repercussions as both sensory and motor damage [45–46, 54].

Leprosy/HIV coinfection seems to be directly related to the immune improvement that the introduction of HAART provides due to a phenomenon called immune reconstruction inflammatory syndrome (IRIS), which constitutes the immune response to a specific pathogen after the introduction of antiretroviral therapy [10–12, 14–15, 43, 55]. The change in immunity caused by the immune restoration also provides the patient's inflammatory response to the nerve trunks and nerve endings of the skin. The inflammatory mechanism of neural damage in leprosy is most evident at the time neuritis occurs. However, if the patient has a greater chance of neuritis attributable also to leprosy, with repercussions on NFI due to the restoration of the immune response, HAART also restores or contributes to remodeling patient immune response or immune memory, which may justify the better evolution of patients observed in this study, evolving with a lower prevalence of neuritis at the end of MDT treatment when compared with non-coinfecting patients [4, 12].

The odds of the occurrence of damage and the extent of damage were higher in coinfecting individuals and those who apparently showed a more rapid improvement at the moments observed, which could be related to the improvement of overt neuritis, which manifest pain. It is noteworthy that AIDS alters the overall immunity of the patient; after immune reconstitution, the specific response will be re-established [54].

In response to abrupt episodes of bacillary proliferation or rapid variations in cellular immunity, rapid formations of granulomas with macrophages, epithelioid and lymphocyte cells, edema and, in some cases, necrotic changes occur. These changes lead to the worsening of neurological lesions, which manifest themselves through complaints such as paresthesias, pain and motor and sensory deficits and reflect higher degrees of disability [56].

There was no difference in the frequency of complaints, but it is noteworthy that there were slightly more complaints among coinfecting patients at the time of the leprosy diagnosis than among non-coinfecting patients, who seemed to present a more rapid improvement, which can be attributed to the fact that when coinfecting patients initiate treatment for leprosy, they generally are more affected by reactions and neuritis as a result of the immunological changes [10, 13–15, 43]. However, attention must be paid to the subjective character of pain because the complaints were present among individuals who did not present neuritis and even in individuals without sensory and motor damage. The complaints may have other non-neuropathic origins, including psychological ones, because of the high stigma surrounding both diseases [57].

To prevent nerve damage from being permanent, it is essential that it is treated early. Prednisolone is a potent immunosuppressive recommended for the treatment of patients with leprosy. However, effective optimal doses and treatment times for controlling the damage are still unknown. Studies in coinfecting patients are still scarce [4, 25, 58]. The observation of the best clinical improvement rate in coinfecting patients using steroids, especially in the first 60 days, points to a possible factor unrelated only to the leprosy neuritis.

Based on these results, we can assume that the corticosteroid is effective due to the improvement of factors related to HIV disease in coinfecting patients. Patients with leprosy alone demonstrated much slower clinical improvement. A long-term cohort clinical trial demonstrated that improvements to leprosy damage occur in the first few weeks of corticosteroid use, while even high doses do little to contribute to chronic and persistent neuritis [59]. These intriguing aspects that require other studies for such observations to be corroborated. The number of patients was a limiting factor for this observation.

In the analysis of data obtained by clinical observation with simplified techniques, validated for the observation of leprosy neural damage in the two cohorts, and with the points considered in this discussion, it is strongly suggested that the greatest motor damage of the coinfecting patient is likely not due to damage caused by *M. leprae* but rather to loss of body mass and other conditions associated with HIV disease, even those of central nervous origin [36]. In addition, it is strongly suggestive that the sensory damage can be attributed to the damages caused by both *M. leprae* and HIV. Therefore, further research is necessary, with specific complementary tests evaluating the nerve trunks of coinfecting patients, studies on histopathological and immune and inflammatory responses of peripheral nerves, electroneuromyography studies and specific tests of muscular strength and the inclusion of a larger number of clinical variables of HIV disease.

We can also note that new simplified evaluation instruments that allow the evaluation of the NFI of leprosy patients coinfecting with HIV should be validated for use in the service because such diseases occur in areas where such comorbidities are still considered neglected diseases and affect an economically active and socially vulnerable population.

Supporting information

S1 Table. Distribution of coinfecting patients according to clinical variables. ^a intragroup analysis of paucibacillary and multibacillary coinfecting. (PDF)

S2 Table. Distribution of coinfecting and non-coinfecting patients according to occurrence of neuritis. ^a intragroup analysis of paucibacillary and multibacillary coinfecting; ^b intragroup analysis of paucibacillary and multibacillary non-coinfecting; ¹ intergroup analysis of paucibacillary of coinfecting and non-coinfecting group; ² intergroup analysis of multibacillary of coinfecting and non-coinfecting group.

(PDF)

S3 Table. Distribution of coinfecting and non-coinfecting patients according to complaints related to sensitive neural damage. ^a without information coinfecting = 1, without information non-coinfecting = 0; ^b Without information coinfecting = 18, without information non-coinfecting = 14; ^c without information coinfecting = 5, without information non-coinfecting = 6; ¹ intergroup analysis for paucibacillary and multibacillary at all three moments of the study.

(PDF)

S1 Checklist. STROBE checklist.

(PDF)

Author Contributions

Conceptualization: Marilia Brasil Xavier, Carlos Eduardo Pereira Corbett.

Data curation: Fernando Octavio Machado Juca Neto, Thomaz Xavier Carneiro.

Formal analysis: Fernando Octavio Machado Juca Neto, Thomaz Xavier Carneiro.

Investigation: Marilia Brasil Xavier, Mariana Garcia Borges do Nascimento, Keila de Nazare Madureira Batista, Danusa Neves Somensi.

Methodology: Marilia Brasil Xavier.

Project administration: Marilia Brasil Xavier.

Supervision: Marilia Brasil Xavier, Carlos Eduardo Pereira Corbett.

Writing – original draft: Marilia Brasil Xavier, Mariana Garcia Borges do Nascimento, Claudia Maria Castro Gomes.

Writing – review & editing: Thomaz Xavier Carneiro, Claudia Maria Castro Gomes.

References

1. Ministério da saúde do Brasil. Secretaria de Vigilância em Saúde. Boletim Epidemiológico: Hanseníase. 2018; 49(4): 1–10. Available: <http://portal.arquivos2.saude.gov.br/images/pdf/2018/janeiro/31/2018-004-Hanseníase-publicacao.pdf> Accessed 28 February 2018.
2. Ministério da Saúde do Brasil. Secretaria de Vigilância em Saúde. Boletim epidemiológico HIV-AIDS 2017. Brasília (DF); 2017. <http://www.aids.gov.br/pt-br/pub/2017/boletim-epidemiologico-hivaids-2017>. Accessed 28 February 2018.
3. Pereira GAS, Stefani MMA, Araujo Filho JA, Souza LCS, Stefani GP, Martelli CMT. Human immunodeficiency virus type 1 (HIV-1) and Mycobacterium leprae co-infection: HIV-1 subtypes and clinical, immunologic, and histopathologic profiles in a Brazilian Cohort. *Am J Trop Med Hyg.* 2004; 71(5): 679–684. PMID: 15569804.
4. Pires CAA, Jucá Neto FO M, Albuquerque NC, Macedo GMM, Batista KNM, Xavier MB. Leprosy Reactions in Patients Coinfected with HIV: Clinical Aspects and Outcomes in Two Comparative Cohorts in the Amazon Region, Brazil. *PLoS Negl Trop Dis.* 2015; 9(6). e0003818. <https://doi.org/10.1371/journal.pntd.0003818> PMID: 26029928
5. Pires CAA, Quaresma JAS, Souza-Aarão TL, Souza JR, Macedo GMM, Jucá Neto FOM, et al. Expression of interleukin-1 β and interleukin-6 in leprosy reactions in patients with human immunodeficiency virus coinfection. *Acta Trop.* 2017; 172: 213–16. <https://doi.org/10.1016/j.actatropica.2017.05.010> PMID: 28511777

6. Bichara CNC, Bichara CDA, Tostes C, Pova MM, Quaresma JAS, Xavier MB. Prevalence of autoantibodies against cellular antigens in patients with HIV and leprosy coinfection in the Amazon region. *Infect Dis Poverty*. 2017; 6(1): 80. <https://doi.org/10.1186/s40249-017-0294-2> PMID: 28566085
7. Ministério da Saúde do Brasil. Secretaria de Vigilância em Saúde. Diretrizes para vigilância, atenção e eliminação da hanseníase como problema de saúde pública, Brasília: Ministério da Saúde; 2016. http://portal.saude.pe.gov.br/sites/portal.saude.pe.gov.br/files/diretrizes_para_eliminacao_hanseniase_-_manual_-_3fev16_isbn_nucom_final_2.pdf. Accessed: 20 February 2018.
8. Ridley DS, Jopling WH. A classification of leprosy for research purposes. *Lepr Rev*. 1962; 33: 119–28. PMID: 14492126.
9. Ridley DS. Histological classification and the immunological spectrum of leprosy. *Bull World Health Organ*. 1974; 51(5): 451–65. PMID: 4549496
10. Murdoch DM, Venter WDF, Rie AV, Feldman C. Immune reconstitution inflammatory syndrome (IRIS): review of common infectious manifestations and treatment options. *AIDS Res Ther*. 2007; 4(9).
11. Deps P, Lockwood DN. Leprosy occurring as immune reconstitution syndrome. *Trans R Soc Trop Med Hyg*. 2008. 102(10): 966–8. <https://doi.org/10.1016/j.trstmh.2008.06.003> PMID: 18639911
12. Deps P, Lockwood DN. Leprosy presenting as immune reconstitution inflammatory syndrome: proposed definitions and classification. *Lepr Rev*. 2010; 81(1): 59–68. PMID: 20496570
13. Sarno EN, Illarramendi X, Nery JA, Sales AM, Gutierrez-Galhardo MC, Penna ML, et al. HIV-*M. leprae* interaction: can HAART modify the course of leprosy? *Public Health Rep*. 2008; 123(2): 206–12. <https://doi.org/10.1177/003335490812300213> PMID: 18457073
14. Couppie P, Abel S, Voichet H, Roussel M, Helenon R, Huerre M, et al. Immune reconstitution inflammatory syndrome associated with HIV and leprosy. *Arch Dermatol*. 2004; 140(8):997–1000. <https://doi.org/10.1001/archderm.140.8.997> PMID: 15313818
15. Gaardbo JC, Hartling HJ, Gerstoft J, Nielsen SD. Incomplete immune recovery in HIV infection: mechanisms, relevance for clinical care, and possible solutions. *Clin Dev Immunol*. 2012; 2012:670957. <https://doi.org/10.1155/2012/670957> PMID: 22474480
16. Pignataro P, Rocha Ada S, Nery JA, Miranda A, Sales AM, Ferreira H, et al. Leprosy and AIDS: two cases of increasing inflammatory reactions at the start of highly active antiretroviral therapy. *Eur J Clin Microbiol Infect Dis* 2004; 23(5): 408–11. <https://doi.org/10.1007/s10096-004-1131-7> PMID: 15112073
17. Patil VC, Patil HV. Neurological manifestations of HIV-AIDS at a tertiary care center in western Maharashtra. *Int. J. Med. Public Health*. 2014 Jul-Sep; 4(3). <https://doi.org/10.4103/2230-8598.137703>
18. Chen H, Lin F, Liu S, Da Y, Guo D. Neurological manifestations, laboratory and neuroimaging features in HIV-infected patients. *Neurosciences (Riyadh)*. 2017 Oct; 22(4): 311–5. <https://doi.org/10.17712/nsj.2017.4.20160606> PMID: 29057859
19. Weinstein DE, Freedman VH, Kaplan G. Molecular mechanism of nerve infection in leprosy. *Trends Microbiol*. 1999; 7(5): 185–86. PMID: 10383223
20. Chacha JJ, Sotto MN, Peters L, Lourenço S, Rivitti EA, Melnikov P. Sistema nervoso periférico e pressupostos da agressão neural na hanseníase. *An Bras Dermatol*. 2009; 84(5): 495–500. <http://dx.doi.org/10.1590/S0365-05962009000500008>
21. Illarramendi X, Rangel E, Miranda AM, Castro ACR, Magalhães GO, Antunes SLG. Cutaneous lesions sensory impairment recovery and nerve regeneration in leprosy patients. *Mem Inst Oswaldo Cruz*. 2012; 107(Suppl. I): 68–73. <http://dx.doi.org/10.1590/S0074-02762012000900012>.
22. Batista KNMB. Análise do dano neural hanseniano em pacientes hansenianos coinfectados pelo vírus da imunodeficiência adquirida através de duas coortes clínicas. M.Sc. Thesis, Universidade Federal do Pará. 2013. http://ppgdt.prosp.ufpa.br/ARQUIVOS/teses/2013/Tese_AnaliseDanoNeural.pdf
23. Farrar J, Hotez PJ, Junghanss T, Kang G, Lallo D, White NJ. *Manson's Tropical Diseases*. 23rd ed. United States: Saunders (imprint); 2014.
24. Zanetti C, Manzano GM, Gabbai AA. Frequência da neuropatia periférica no Brasil em um grupo de pacientes HIV positivo. *Arq. Neuro-Psiquiatr*. 2004; 62(2): 253–6. <http://dx.doi.org/10.1590/S0004-282X2004000200012>.
25. Van Veen NHJ, Nicholls PG, Smith WCS, Richardus JH. Corticosteroids for treating nerve damage in leprosy. *Cochrane Database Syst Rev*. 2016, Issue 5. Art. No.: CD005491. <https://doi.org/10.1002/14651858.CD005491.pub3> PMID: 27210895
26. Ministério da Saúde do Brasil. Gabinete do Ministro. Portaria n.º 3.125, de 07 de outubro de 2010. Aprova as Diretrizes para Vigilância, Atenção e Controle da hanseníase. *Diário Oficial da União, Brasília, DF, 15 de out. 2010*. http://bvsms.saude.gov.br/bvs/saudelegis/gm/2010/prt3125_07_10_2010.html. Accessed: 18 February 2018.
27. Ministério da Saúde do Brasil. Secretaria de Vigilância em Saúde. Departamento de Vigilância, Prevenção e Controle das Infecções. Protocolo clínico e diretrizes Terapêuticas para Manejo da Infecção

- pelo Hiv em adultos. Brasília: Ministério da Saúde, 2017. <http://www.aids.gov.br/pt-br/pub/2013/protocolo-clinico-e-diretrizes-terapeuticas-para-manejo-da-infeccao-pelo-hiv-em-adultos>. Accessed: 28 February 2018.
28. Ministério da Saúde do Brasil. Secretaria de Políticas de Saúde. Departamento de Atenção Básica. Guia para o controle da hanseníase. 1ª edição. Brasília: Ministério da Saúde, 2002. http://bvsm.s.saude.gov.br/bvsm/publicacoes/guia_de_hanseníase.pdf. Accessed: 29 January 2018.
 29. Norman G, Joseph G, Richard J. Validity of the WHO operational classification and value of other clinical signs in the classification of leprosy. *Int J Lepr Other Mycobact Dis*. 2004 Sep; 72(3):278–83. [https://doi.org/10.1489/0020-7349\(2004\)72<278:VOTWOC>2.0.CO;2](https://doi.org/10.1489/0020-7349(2004)72<278:VOTWOC>2.0.CO;2) PMID: 15485284.
 30. Lockwood DN, Saunderson PR. Nerve damage in leprosy: a continuing challenge to scientists, clinicians and service providers. *Int Health*. 2012; 4(2): 77–85. <https://doi.org/10.1016/j.inhe.2011.09.006> PMID: 24029146
 31. Talhari C, Mira MT, Massone C, Braga A, Chrusciak-Talhari A, Santos M, et al. Leprosy and HIV Coinfection: A Clinical, Pathological, Immunological, and Therapeutic Study of a Cohort from a Brazilian Referral Center for Infectious Diseases. *J Infect Dis*. 2010; 202(3): 345–54. <https://doi.org/10.1086/653839> PMID: 20565258
 32. Lustosa AA, Nogueira LT, Pedrosa JI, Teles JB, Campelo V. The impact of leprosy on health-related quality of life. 2011. *Rev Soc Bras Med Trop*. 2011 Oct; 44(5):621–6. <http://dx.doi.org/10.1590/S0037-86822011000500019> PMID: 22031079
 33. Teja VD, Talasila SR, Vemu L. Neurologic manifestations of HIV infection: An Indian hospital-based study. *AIDS Read* 2005; 15(3): 139–43. PMID: 15786577.
 34. Verma A. Epidemiology and clinical features of HIV-1 associated neuropathies. *J Peripher Nerv Syst* 2001; 6(1): 8–13. PMID: 11293807
 35. Kumar KS, Narisetty V, Shekar PC, Praveen C, Neeraja. A clinical study of neurological manifestations in HIV positive patients in a tertiary care hospital of Telangana, India. *IAIM*, 2018; 5(1): 42–9.
 36. Gabbai AA, Castelo A, Oliveira AS. HIV peripheral neuropathy. *Handb Clin Neurol*. 2013; 115:515–29 <https://doi.org/10.1016/B978-0-444-52902-2.00029-1> PMID: 23931799
 37. Lockwood DNJ, Lambert SM. Human immunodeficiency virus and leprosy: an update. *Dermatol Clin*. 2011; 29(1): 125–8. <https://doi.org/10.1016/j.det.2010.08.016> PMID: 21095536
 38. Massone C, Talhari C, Rodrigues RR, Sindeaux RHM, Mira MT, Talhari S, et al. Leprosy and HIV coinfection: a critical approach. *Expert Rev*. 2011; 9(6): 701–10. <https://doi.org/10.1586/eri.11.44> PMID: 21692674
 39. Miranzi SSC, Pereira LHM, Nunes AA. Perfil epidemiológico da hanseníase em um município brasileiro, no período de 2000 a 2006. *Rev Soc Bras Med Trop*. 2010; 43(1): 62–7.
 40. Lana FCF, Carvalho APM, Davi RFL. Perfil epidemiológico da hanseníase na microrregião de Araçuaí e sua relação com ações de controle. *Esc Anna Nery*. 2011; 15(1): 62–7. <http://dx.doi.org/10.1590/S1414-81452011000100009>.
 41. Ribeiro AF JR, Vieira MA, Valceira AP. Perfil epidemiológico da hanseníase em uma cidade endêmica no norte de Minas Gerais. *Rev Bras Clin Med*. 2012; 10(4): 272–7.
 42. George A, Vidyadharan S. Hansen's disease in association with immune reconstitution inflammatory syndrome. *Indian Dermatol Online J*. 2016 Jan-Feb; 7(1):29–31. <https://doi.org/10.4103/2229-5178.174305> PMID: 26955584
 43. Mehta S, Padhiar B, Shah B. Leprosy presenting as immune reconstitution inflammatory syndrome. *Indian J Sex Transm Dis*. 2008; 29:96–7. <https://doi.org/10.4103/0253-7184.48734>
 44. Xavier MB. Estudo clínico e imunopatológico em pacientes coinfectados pelo vírus da imunodeficiência humana. Ph.D. Dissertation. Universidade Federal do Pará: Brasil. 2006. http://www.bibcentral.ufpa.br/arquivos/145000/146600/19_146659.htm
 45. Acácio JAB. Avaliação do dano neural periférico sensitivo e motor em pacientes hansenianos, com hiv/ Aids e co-infectados hanseníase/hiv utilizando-se a avaliação neurológica simplificada e técnicas. Ph. D. Dissertation. Universidade Federal do Pará. 2015. <http://repositorio.ufpa.br/jspui/handle/2011/9105>.
 46. Novais DVC. Força muscular, força de pressão palmar e antropometria em pacientes hansenianos coinfectados com HIV. M.Sc. Thesis, Universidade Federal do Pará. 2015. https://sigaa.ufpa.br/sigaa/public/programa/defesas.jsf?lc=pt_BR&id=487
 47. Snider WD, Simpson SM, Nielsen S, Gold JWM, Metrok CE, Posne JB. Neurological complications of acquired immune deficiency syndrome: analysis of 50 patients. *Ann Neurol*. 1983; 14(4): 403–18. <https://doi.org/10.1002/ana.410140404> PMID: 6314874
 48. Oliveira MLC, Paz LC, Melo GF. Dez anos de epidemia do HIV-AIDS em maiores de 60 anos no Distrito Federal—Brasil. *Rev bras Epidemiol*. 2013; 16(1): 30–9.

49. Oshinaike O, Akinbami A, Ojo O, Ogbera A, Okubadejo N, Ojini F, Danesi. Influence of age and neurotoxic HAART use on frequency of HIV sensory neuropathy. *AIDS Res Treat.* 2012; 2012: 110–115.
50. Bartlett JG, Gallant JE. *Medical Management of HIV infection.* Health Publishing Business Group. Baltimore; 2004.
51. Jones E, Mazirka P, McNurlan MA, Darras F, Gelato MC, Caso G. Highly active antiretroviral therapy dysregulates proliferation and differentiation of human pre-adipocytes. *World J Virol* 2017; 6(3): 53–8. <https://doi.org/10.5501/wjv.v6.i3.53> PMID: 28868243
52. Caso G, Mileva I, McNurlan MA, Mynarcik DC, Darras F, Gelato MC. Effect of ritonavir and atazanavir on human subcutaneous preadipocyte proliferation and differentiation. *Antiviral Res* 2010; 86(2): 137–43. <https://doi.org/10.1016/j.antiviral.2010.02.004> PMID: 20153378.
53. Sacilotto LB, Pereira PCM, Manechini JPV, Papini SJ. Body Composition and Metabolic Syndrome Components on Lipodystrophy Different Subtypes Associated with HIV. *J Nutr Metab.* 2017; 2017. <https://doi.org/10.1155/2017/8260867>.
54. Deeks SG, Lewin SR, Havlir DV. The end of AIDS: HIV infection as a chronic disease. *Lancet.* 2013 nov 2; 382(9903): 1525–33. [https://doi.org/10.1016/S0140-6736\(13\)61809-7](https://doi.org/10.1016/S0140-6736(13)61809-7) PMID: 24152939.
55. Ustianowski AP, Lawn SD, Lockwood DN. Interactions between HIV infection and leprosy: a paradox. *Lancet Infect Dis.* 2006; 6(6): 350–60. [https://doi.org/10.1016/S1473-3099\(06\)70493-5](https://doi.org/10.1016/S1473-3099(06)70493-5) PMID: 16728321
56. Fleury RN. Patologia da neurite hansênica. In: Duerksen F, Virmond M. *Cirurgia reparadora e reabilitação em hanseníase.* Bauru: Centro de Estudos Dr. Reynaldo Quagliato, Instituto Lauro de Souza Lima, 1997. 363 p
57. Corrêa BJ, Marciano LHSC, Nardi ST, Marques T, Assis TF, Prado RBR. Associação entre sintomas depressivos, trabalho e grau de incapacidade na hanseníase. *Acta Fisiátr.* 2014; 21(1):1–5.
58. Wagenaar I, Post E, Brandsma W, Bowers B, Alam K, Shetty V, et al. Effectiveness of 32 versus 20 weeks of prednisolone in leprosy patients with recent nerve function impairment: A randomized controlled trial. *PLoS Negl Trop Dis.* 2017; 11(10): 1–18. e0005952. <https://doi.org/10.1371/journal.pntd.0005952>
59. Capadia GD, Shetty VP, Khambati FA, Ghate SD. Effect of Corticosteroid Usage Combined With Multi-drug Therapy on Nerve Damage Assessed Using Nerve Conduction Studies: A Prospective Cohort Study of 365 Untreated Multibacillary Leprosy Patients. *J Clin Neurophysiol.* 2010; 27(1): 38–47. <https://doi.org/10.1097/WNP.0b013e3181cb426d> PMID: 20087206.