

RESEARCH ARTICLE

Value of the log odds of positive lymph nodes for prognostic assessment of colon mucinous adenocarcinoma: Analysis and external validation

Huajun Cai¹ | Tianbao Xu¹ | Zhicheng Zhuang¹ | Yiyi Zhang¹ | Yuan Gao¹ | Xing Liu¹ | Jinfu Zhuang¹ | Yuanfeng Yang¹ | Guoxian Guan^{1,2} 

¹Department of Colorectal Surgery, The First Affiliated Hospital of Fujian Medical University, Fuzhou, China

²Department of Colorectal Surgery, Fujian Medical University Union Hospital, Fuzhou, China

Correspondence

Guoxian Guan, Department of Colorectal Surgery, The First Affiliated Hospital of Fujian Medical University, Fuzhou, China.

Email: fjxhggx@163.com

Funding information

This study was supported by the Science Foundation of the Fujian Province (No. 2016J01602; No. 2019J0105), Special Financial Foundation of Fujian Provincial (No. 2015-1297), Young and middle-aged backbone training project in the health system of Fujian province (2016-ZQN-26), Professor Development Foundation of Fujian Medical University (No. JS11006), Special Financial Foundation of Fujian Provincial (2020B019), the Startup Fund for Scientific Research, Fujian Medical University (2020QH2036), and Talent programs granted from The First Affiliated Hospital of Fujian Medical University (YJRC3600).

Abstract

Purpose: To evaluate the impact of the log odds of positive lymph nodes (LODDS) on cancer-specific survival (CSS) in colon mucinous adenocarcinoma (MAC) patients, compared with pN stage and the lymph nodes ratio (LNR).

Methods: A total of 10,182 colon MAC patients from the Surveillance, Epidemiology, and End Results database were divided into the training group. The external validation group included 153 patients from Fujian Medical University Union Hospital. The Cox regression method was used to identify prognostic risk factors. Nomograms were evaluated by Harrell's concordance index (C-index) and calibration curves. Recursive partitioning analysis (RPA) was used to develop a novel staging system.

Results: Time-dependent receiver operating characteristic curves (ROC) to predict CSS showed the areas under the ROC curve of LODDS were always higher than pN stage and LNR. LNR and LODDS classifications can well distinguish the prognosis of patients with the same pN stage. Cox analyses indicated that age, tumor size, pT stage, pN stage, LNR, and LODDS were independent predictors of CSS ($p < 0.05$). Based on three lymph nodes classifications, we constructed three prognostic nomograms models for CSS. The C-index of the pN, LNR, and LODDS classification nomograms were 0.746 (95% confidence interval [95% CI]: 0.736–0.756), 0.750 (95% CI: 0.740–0.760), and 0.758 (95% CI: 0.748–0.768), respectively. In external validation, we observed the C-index of LODDS classification nomograms was 0.787 (95% CI: 0.648–0.926). RPA stage, including four stages, was constructed successfully based on pT stage and LNR or LODDS, respectively. The 3-, 5-, and 8-year areas under the ROC curve of LNR-RPA stage and LODDS-RPA stage were superior to tumor-node-metastasis stage.

Conclusion: LODDS to be a better prognostic factor of CSS for colon MAC patients than pN stage and LNR. A nomogram and RPA stage base on LODDS can provide accurate information for personalized cancer treatment.

Huajun Cai, Tianbao Xu, and Zhicheng Zhuang contributed equally to this work.

This is an open access article under the terms of the Creative Commons Attribution License, which permits use, distribution and reproduction in any medium, provided the original work is properly cited.

© 2021 The Authors. *Cancer Medicine* published by John Wiley & Sons Ltd.

KEYWORDS

colon mucinous adenocarcinoma, LODDS, nomograms, prognosis, RPA stage

1 | INTRODUCTION

Worldwide, colorectal cancer remains a common malignant tumor and is a dominant cause of cancer-specific mortality.^{1,2} In the context of personalized medicine, patient management based on histological types is required. Colon mucinous adenocarcinoma (MAC), a particular histological subtype of colon cancer, is characterized by mucinous components that exceed 50% of tumor tissue components.^{3,4} MAC accounts for about 10%–15% of total colorectal cancer cases.⁵ At diagnosis, many MAC patients present with advanced stage and regional lymph node metastasis.^{6–8} However, the prognostic significance of MAC still is controversial. Multiple studies indicate that MAC subtype patients have a dismal survival.^{9–11} In contrast, a few studies have demonstrated that MAC does not affect survival outcomes compared to the adenocarcinoma subtype.^{12–14} Hence, given this scenario, a more suitable and accurate prognostic model is explicitly warranted for use in colon MAC patients.

Lymph node metastasis is an essential driver of clinical outcomes. The American Joint Committee on Cancer (AJCC) tumor-node-metastasis (TNM) classification is based on the number of positive regional lymph nodes (PLN). Nevertheless, patients with the same TNM stage remain heterogeneous. Recently, the lymph nodes ratio (LNR) and the log odds of positive lymph nodes (LODDS) are applied to clinical management and survival prediction in multiple tumors, which demonstrate distinct superiority.^{15–18} Although some studies have reported the prognostic value of LNR and LODDS in colon patients.^{19–21} However, these studies are often directed against all histological types in colon cancer. Meanwhile, some of these lacked external validations. Therefore, the role of LNR and LODDS in MAC patients is still unclear.

In the present study, we enrolled colon MAC patients from the Surveillance, Epidemiology, and End Results (SEER) database, compared the ability of AJCC (pN stage) classification, LNR classification, and LODDS classification to predictive survival. Nomogram prognostic model was constructed based on independent prognostic factors. Furthermore, we also validated this model using patients from an external cohort.

2 | METHOD

2.1 | Study cohort

Colon MAC patients retrieved from the SEER database from 2004 to 2015 were assigned to the training group using SEER*Stat software (www.seer.cancer.gov/seerstat).

The external validation group consisted of colon MAC patients from Fujian Medical University Union Hospital (FJMUUH) between January 2008 to September 2017. All participants meet the following inclusion and exclusion criteria. Specifically, details of inclusion criteria were: (1) pathologically confirmed MAC based on International Classification of Diseases of oncology (ICD-O-3); (2) underwent colon resection and regional lymph node dissection; (3) AJCC TNM stage I–III. Details of exclusion criteria were: (1) distant metastasis at the time of diagnosis or during surgery; (2) complicated with another primary tumor; (3) incomplete follow-up data; or (4) incomplete tumor clinicopathological features data (including pT status, pN status, tumor size). Ultimately, 10,182 patients in the SEER cohort and 153 patients in the FJMUUH cohort were included. The study was approved by the Hospital Ethics Committee. Given that the SEER database is publicly accessible, informed consent in training does not require. In the external validation group, informed consent was exempted considering this retrospective design.

We retrieved clinicopathological features information from the SEER database, including age at diagnosis, sex, race, tumor site, tumor size, pT stage, pN stage, the number of total regional lymph nodes (TLN) examined, and the number of positive regional lymph nodes. Cecum, ascending colon, hepatic flexure of colon, and transverse colon were classed as proximal colon, while splenic flexure of colon, descending colon, and sigmoid colon were categorized as distal colon. And the pN status is reclassified according to the 8th edition of the AJCC staging system (pN status: pN0, pN1a, pN1b, pN2a, pN2b). Colon cancer-specific survival (CSS) was used as the primary endpoint.

2.2 | LNR classification

The ratio of PLN/the number of TLN was calculated as LNR. Aside from LNR = 0 and LNR = 1, the value of PLN/TLN was partitioned into 10 groups by 0.1 intervals. Kaplan–Meier (KM) analysis was performed to compare the survival differences between two neighboring groups. Then, 12 LNR subgroups were regrouped according to similar CSS.

2.3 | LODDS classification

$\text{Log}[(\text{PLN} + 0.5)/(\text{TLN} - \text{PLN} + 0.5)]$ was counted as LODDS. The addition of a value of 0.5 to the numerator and denominator in the formula is to avoid singularity.²²

The classification of LODDS subgroups was similar in design to the LNR subgroups with 0.5 intervals.

2.4 | Comparison among three lymph nodes classifications and prognostic model

A time-dependent receiver operating characteristic (ROC) plot was performed, and the areas under the ROC curve (AUC) were counted to compare the predictive ability of three lymph nodes classifications. A univariate Cox proportional hazards model was performed to determine the prognostic values factor for CSS. The median tumor size was set as the cutoff point. The pN stage, LNR, LODDS were included in multivariate analysis, respectively. Finally, three nomogram models were constructed based on independent prognostic factors. The Harrell's concordance index (C-index) and calibration curve were applied to evaluate the predictive ability of the three models. FJMUUH cohort was used for external validation of the nomogram model.

2.5 | Statistical analysis

All the statistical analyses were carried out on SPSS (versions 22.0) and R software (versions 3.6.3). Difference testing between SEER cohort and FJMUUH cohort was assessed by student *t*-test or Chi-squared test, when appropriate. The cox regression was used for univariate or multivariate survival analyses. The “survival ROC” package and “rms” package were used to generate time-ROC plots and nomograms, respectively. A novel tumor stage was reclassified using recursive partitioning analysis, which can be accessed from the online website (<http://rpa.renlab.org>).²³ $p < 0.05$ was considered statistically significant.

3 | RESULT

3.1 | Clinicopathological features of patients

There were 10,182 and 153 patients in the SEER cohort and FJMUUH cohort, respectively. Table 1 illustrates two cohort baselines. Of the SEER cohort, the mean age was 68.7 (± 14.5) years. Most of them (84.0%) had advanced pT stage (pT3 or pT4), and 4147 (40.7%) patients had positive lymph nodes. A majority of tumors (76.3%) were located in the proximal colon. Of the FJMUUH, the mean age was 59.0 (± 13.9) years. Similar to the SEER cohort, there were 145 (94.8%) and 70 (45.8%) patients who had

TABLE 1 Baseline characteristics of the SEER cohort and FJMUUH cohort

Characteristics	SEER cohort N (%)	FJMUUH cohort N (%)	p value
Age, years	68.7 \pm 14.5	59 \pm 13.9	<0.001
Sex			0.001
Male	4695 (46.1)	91 (59.5)	
Female	5487 (53.9)	62 (40.5)	
Race			<0.001
White	8400 (82.5)	0 (0.0)	
Black	1087 (10.7)	0 (0.0)	
Other/unknown	695 (6.8)	153 (100.0)	
Tumor size, cm	5.9 \pm 3.6	6.3 \pm 2.1	0.012
Tumor site			<0.001
Proximal colon	7772 (76.3)	80 (52.3)	
Distal colon	2410 (23.7)	73 (47.7)	
pT stage			0.001
T1	315 (3.1)	0 (0.0)	
T2	1311 (12.9)	8 (5.2)	
T3	6536 (64.2)	104 (68.0)	
T4	2020 (19.8)	41 (26.8)	
pN stage			0.467
N0	6035 (59.3)	83 (54.2)	
N1a	1191 (11.7)	22 (14.4)	
N1b	1236 (12.1)	17 (11.1)	
N2a	854 (8.4)	13 (8.5)	
N2b	866 (8.5)	18 (11.8)	

Abbreviations: FJMUUH, Fujian Medical University Union Hospital; SEER, Surveillance, Epidemiology, and End Results.

advanced pT stage and positive lymph nodes. The tumor size in FJMUUH cohort was larger than that in SEER cohort significantly ($p = 0.012$).

3.2 | LNR classification

As shown in Table 2, we then compared the survival difference between LNR adjacent subgroup. The subgroup with similar prognoses was grouped together. Specifically, LNR classification: LNR1 (LNR = 0); LNR2 ($0 < \text{LNR} \leq 0.1$); LNR3 ($0.1 < \text{LNR} \leq 0.2$); LNR4 ($0.2 < \text{LNR} \leq 0.5$); LNR5 (LNR > 0.5). Within this classification, 6035 (59.3%) in the LNR1 subgroup, 1456 (14.3%) in the LNR2 subgroup, 940 (9.2%) in the LNR3 subgroup, 1145 (11.2%) in the LNR4 subgroup, and 606 (6.0%) in the LNR5 subgroup. The 5-year CSS was: 86.6%, 75.2%, 69.2%, 51.9%, 27.0% for the LNR1 subgroup to LNR5 subgroup,

and the 8-year CSS was 83.0%, 69.1%, 62.8%, 47.1%, 21.1%, respectively. KM plot presenting a significant difference in CSS among LNR classification as illustrated in Figure 1A ($p < 0.001$).

3.3 | LODDS classification

Next, we also grouped LODDS subgroups according to similar CSS. Detailed data are available in Table 3. Concretely, for LODDS classification: LODDS1 ($\text{LODDS} \leq -1.5$); LODDS2 ($-1.5 < \text{LODDS} \leq -1.0$); LODDS3 ($-1.0 < \text{LODDS} \leq -0.5$); LODDS4 ($-0.5 < \text{LODDS} \leq 0$); LODDS5 ($0 < \text{LODDS} \leq 0.5$); and

LODDS6 ($\text{LODDS} > 0.5$). Then, of this classification, 3510 (34.5%) in the LODDS1 subgroups, 3240 (31.8%) in the LODDS2 subgroups, 1748 (17.2%) in the LODDS3 subgroups, 1078 (10.6%) in the LODDS4 subgroups, 366 (3.6%) in the LODDS5 subgroups, and 240 (2.4%) in the LODDS6 subgroups. The 5-year CSS was 89.7%, 81.6%, 70.1%, 51.5%, 31.7%, 19.8% for the LODDS1 subgroup to LODDS6 subgroup, and the 8-year probabilities of CSS were 85.5%, 75.7%, 64.0%, 46.3%, 25.7%, 20.2%, respectively. Colon CSS was statistically different among LODDS classification ($p < 0.001$, Figure 1B).

3.4 | Comparison among three lymph nodes classifications

To further demonstrate predictive capabilities of pN stage, LNR classifications, and LODDS classifications, time-ROC were drawn, as shown in Figure 2. AUC of LODDS classifications was consistently outperformed pN stage and LNR classifications, which demonstrates the dominance of LODDS classifications in predicting CSS.

Moreover, we contrasted CSS of patients based on three lymph nodes classifications. As is evident from Tables 4 and 5 and Figure 3, LNR and LODDS classifications can significantly distinguish the survival outcomes of patients with the same pN stage. However, this approach is not applicable for LNR classification in pN0 stage or $\text{LNR} = 1$. Patients with the same LNR and LODDS classifications presented a similar prognosis. Further, LODDS classification showed more remarkable prediction ability for the patient with LNR 1, 4, 5. As shown here (Figure 4), significant differences in CSS between LNR subgroups and LODDS subgroup were observed in TNM pIII stage, while

TABLE 2 5-year and 8-year CSS in LNR subgroups

	N (%)	5-year CSS (%)	8-year CSS (%)	p value ^a
LNR = 0	6035 (59.3)	86.6	83.0	<0.001
$0 < \text{LNR} \leq 0.1$	1456 (14.3)	75.2	69.1	0.001
$0.1 < \text{LNR} \leq 0.2$	940 (9.2)	69.2	62.8	<0.001
$0.2 < \text{LNR} \leq 0.3$	512 (5.0)	56.4	51.2	0.057
$0.3 < \text{LNR} \leq 0.4$	375 (3.7)	50.5	44.9	0.517
$0.4 < \text{LNR} \leq 0.5$	258 (2.5)	48.2	42.4	0.002
$0.5 < \text{LNR} \leq 0.6$	153 (1.5)	34.6	27.1	0.572
$0.6 < \text{LNR} \leq 0.7$	129 (1.3)	25.5	24.3	0.438
$0.7 < \text{LNR} \leq 0.8$	110 (1.1)	29.8	16.3	0.091
$0.8 < \text{LNR} \leq 0.9$	83 (0.8)	17.5	15.5	0.654
$0.9 < \text{LNR} < 1.0$	50 (0.5)	23.1	15.4	0.613
LNR = 1	81 (0.8)	24.0	19.4	

Abbreviations: CSS, cancer-specific survival; LNR, lymph nodes ratio.

^aComparison between adjacent subgroup groups.

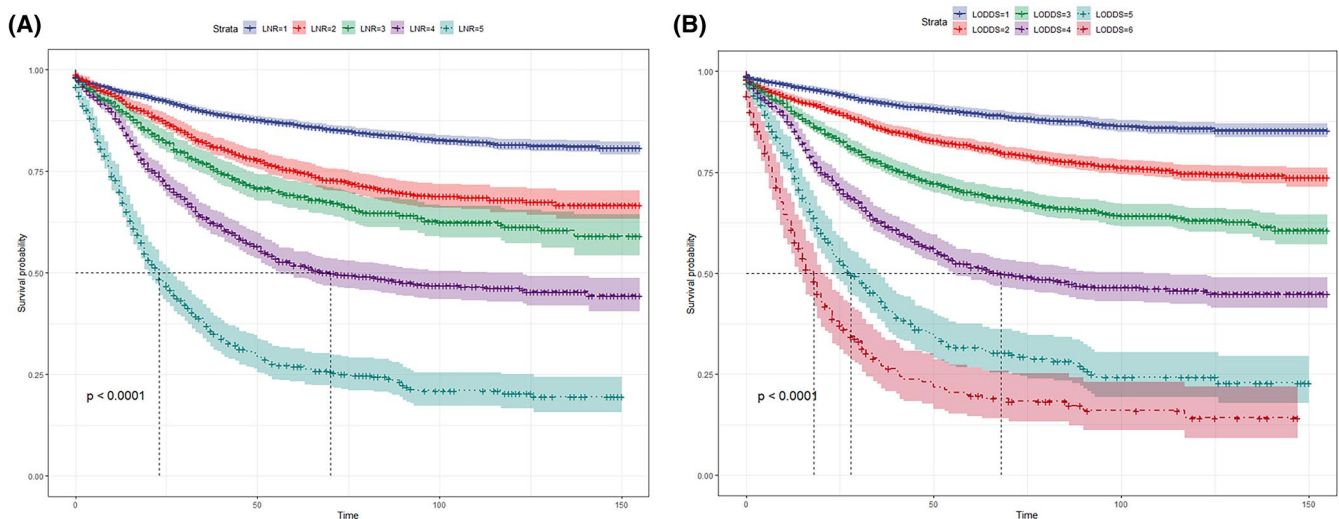


FIGURE 1 Kaplan-Meier survival curves for CSS in LNR classification (A) and LODDS classification (B). CSS, cancer-specific survival; LNR, lymph nodes ratio; LODDS, log odds of positive lymph nodes

	N (%)	5-year CSS (%)	8-year CSS (%)	p value ^a
LODDS ≤ -2.0	84 (0.8)	90.0	90.0	0.617
-2 < LODDS ≤ -1.5	3426 (33.6)	89.7	86.6	<0.001
-1.5 < LODDS ≤ -1.0	3240 (31.8)	81.6	76.5	<0.001
-1.0 < LODDS ≤ -0.5	1748 (17.2)	70.1	64.7	<0.001
-0.5 < LODDS ≤ 0	1078 (10.6)	51.5	46.5	<0.001
0 < LODDS ≤ 0.5	366 (3.6)	31.7	24.3	<0.001
0.5 < LODDS ≤ 1	155 (1.5)	18.4	15.4	0.564
1 < LODDS ≤ 1.5	68 (0.7)	25.6	19.8	0.165
1.5 < LODDS ≤ 2	17 (0.2)	0.0	0.0	

Abbreviations: CSS, cancer-specific survival; LODDS, log odds of positive lymph nodes.

^aComparison between adjacent subgroup groups.

TABLE 3 5-year and 8-year CSS in LODDS subgroups

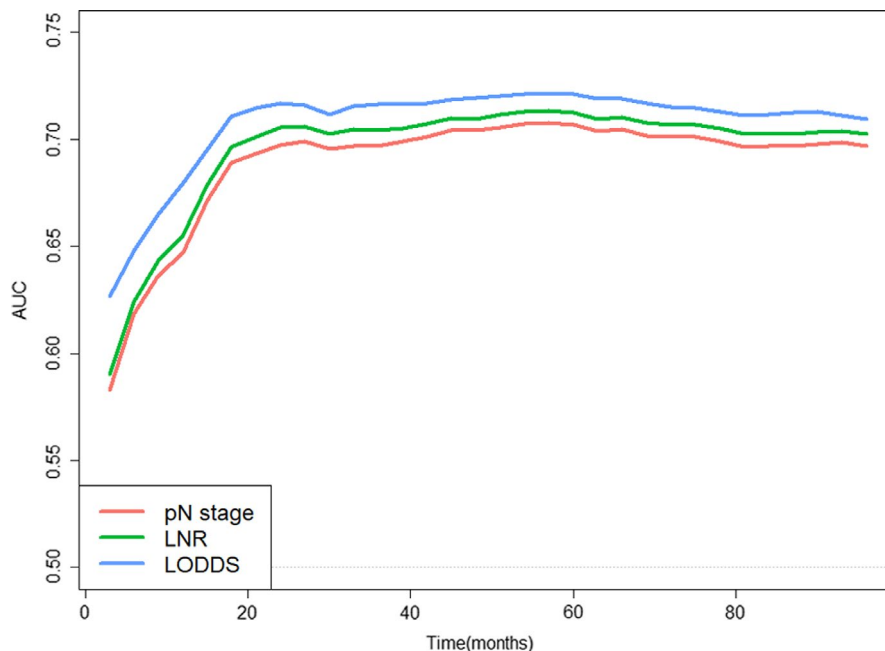


FIGURE 2 Time-ROC used to compare CSS predictive capability of pN stage, LNR classification, and LODDS classification. AUC, the areas under the ROC curve; CSS, cancer-specific survival; LNR, lymph nodes ratio; LODDS, log odds of positive lymph nodes; time-ROC, time-dependent receiver operating characteristic

this difference was not found for the LODDS subgroup in TNM pI stage.

3.5 | Prognostic factors of CSS

Univariate and multivariate Cox regression, as shown in Table 6, were performed to determine prognostic factors of CSS. On univariate analyses, colon CSS was significantly associated with age, tumor size, pT stage, pN stage, LNR, and LODDS (all $p < 0.05$). Next, pT stage, LNR, LODDS were individually included in three multivariate analyses. On multivariate analyses base on three independent lymph nodes classifications, there were significant correlations between CSS and pN stage ($p < 0.001$), LNR ($p < 0.001$), and LODDS ($p < 0.001$). Beyond this, age, tumor size, and pT stage were independent prognostic factors affecting CSS.

3.6 | Development and validation nomograms model

Based on the multivariate analysis results, we constructed three nomograms at the base of three lymph nodes classifications, respectively, as shown in Figure 5. The C-index of pN stage-nomograms, LNR classification nomograms, and LODDS classification nomograms were 0.746 (95% confidence interval [95% CI]: 0.736–0.756), 0.750 (95% CI: 0.740–0.760), and 0.758 (95% CI: 0.748–0.768). The calibration plots predicting the 5-year and 8-year CSS also illustrated that LODDS classification nomograms are of great predictive capability (Figure 6).

Furthermore, we validated LODDS classification nomograms using MAC patients from the FJMUUH cohort. The C-index was 0.787 (95% CI: 0.648–0.926). The calibration curves predicting the 5-year CSS, as shown in Figure 7, showed excellent agreement for nomograms.

TABLE 4 Comparison of CSS based on LNR classification

	LNR1		LNR2		LNR3		LNR4		LNR5		p value
	N (%)	8-year CSS (%)	N (%)	8-year CSS (%)	N (%)	8-year CSS (%)	N (%)	8-year CSS (%)	N (%)	8-year CSS (%)	
pN stage											
pN0 stage	-	-	-	-	-	-	-	-	-	-	-
pN1a stage	-	-	1058 (72.7)	67.1	102 (10.9)	62.7	25 (2.2)	32.5	6 (1.0)	40.0	<0.001
pN1b stage	-	-	376 (25.8)	74.9	606 (64.5)	62.4	234 (20.4)	50.1	20 (3.3)	46.9	<0.001
pN2a stage	-	-	20 (1.4)	58.9	213 (22.7)	64.1	539 (47.1)	48.5	82 (13.5)	17.0	<0.001
pN2b stage	-	-	2 (0.1)	100.0 ^a	19 (2.0)	61.0	347 (30.3)	43.7	498 (82.2)	20.5	<0.001
p value	-	-	0.256		0.887		0.131		0.292		
LODDS classifications											
LODDS1	3478 (57.6)	86.8	32 (2.2)	72.1	-	-	-	-	-	-	0.376
LODDS2	2360 (39.1)	78.7	880 (60.4)	70.3	-	-	-	-	-	-	0.001
LODDS3	173 (2.9)	70.5	544 (37.4)	66.8	925 (98.4)	62.8	106 (9.3)	59.7	-	-	0.446
LODDS4	24 (0.4)	56.5	-	-	15 (1.6)	59.1	1039 (90.7)	45.9	-	-	0.179
LODDS5	-	-	-	-	-	-	-	-	366 (60.4)	24.3	-
LODDS6	-	-	-	-	-	-	-	-	240 (39.6)	16.0	-
p value	<0.001		0.057		0.769		0.017		<0.001		

Abbreviations: CSS, cancer-specific survival; LNR, lymph nodes ratio; LODDS, log odds of positive lymph nodes.

^a5-year CSS.

TABLE 5 Comparison of CSS based on LODDS classification

	LODDS1		LODDS2		LODDS3		LODDS4		LODDS5		LODDS6	
	N (%)	8-year CSS (%)	N (%)	8-year CSS (%)	N (%)	8-year CSS (%)	N (%)	8-year CSS (%)	N (%)	8-year CSS (%)	N (%)	8-year CSS (%)
pN stage												
pN0 stage	3478 (99.1)	86.8	2360 (72.8)	78.7	173 (9.9)	70.5	24 (2.2)	56.5	-	-	-	-
pN1a stage	32 (0.9)	72.1	702 (21.7)	68.7	411 (23.5)	63.2	40 (3.7)	42.0	6 (1.6)	40.0	-	-
pN1b stage	-	-	169 (5.2)	77.5	841 (48.1)	65.2	206 (19.1)	50.5	9 (2.5)	50.0	11 (4.6)	43.8
pN2a stage	-	-	9 (0.3)	55.6	287 (16.4)	66.4	476 (44.2)	45.4	70 (19.1)	17.2	12 (5.0)	16.7
pN2b stage	-	-	-	-	36 (2.1)	51.8	332 (30.8)	44.1	281 (76.8)	24.7	217 (90.4)	14.8
<i>p</i> value	0.376		0.002		0.681		0.371		0.307		0.458	
LNR classifications												
LNR1	3478 (99.1)	86.8	2360 (72.8)	78.7	173 (9.9)	70.5	24 (2.2)	56.5	-	-	-	-
LNR2	32 (0.9)	72.1	880 (27.2)	70.3	544 (31.1)	66.8	-	-	-	-	-	-
LNR3	-	-	-	-	925 (52.9)	62.8	15 (1.4)	59.1	-	-	-	-
LNR4	-	-	-	-	106 (6.1)	59.7	1039 (96.4)	45.9	-	-	-	-
LNR5	-	-	-	-	-	-	-	-	366 (100.0)	24.3	240 (100.0)	16.0
<i>p</i> value	0.376		0.001		0.446		0.179		-		-	<0.001

Abbreviations: CSS, cancer-specific survival; LNR, lymph nodes ratio; LODDS, log odds of positive lymph nodes.

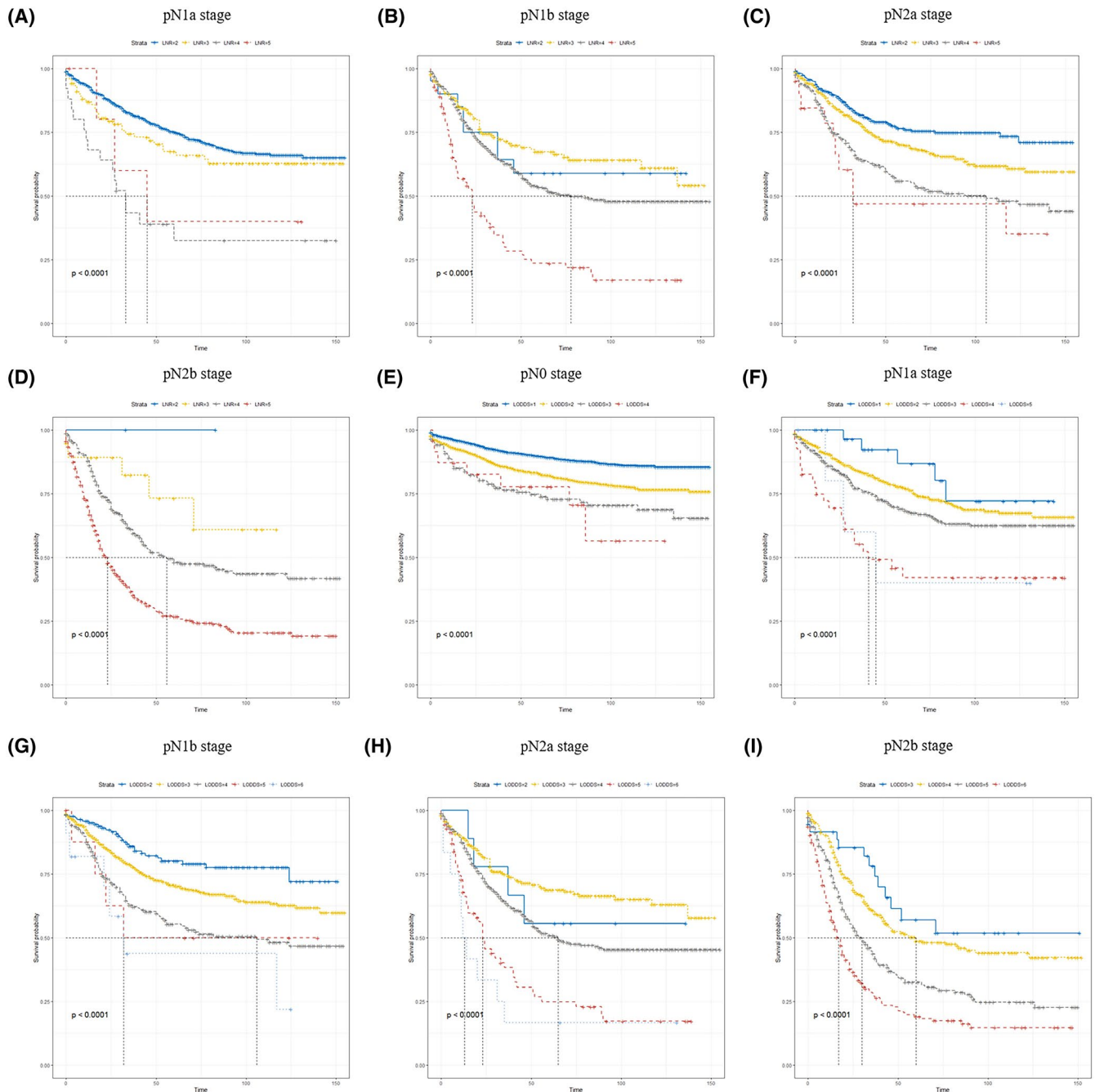


FIGURE 3 Kaplan–Meier survival curves for CSS in LNR (A–D) and LODDS (E–I) classification according to pN stage. CSS, cancer-specific survival; LNR, lymph nodes ratio; LODDS, log odds of positive lymph nodes

3.7 | Novel staging system based on recursive partitioning analysis

We develop a novel staging system using recursive partitioning analysis based on LNR classification (Figure 8A) and LODDS classification (Figure 8B), respectively. For LNR classification, RPA stage including RPA I stage (pT1–3, LNR1–3), RPA II stage (pT4, LNR1–3), RPA III stage (pT1–4,

LNR4), and RPA IV stage (pT1–4, LNR5). For LODDS classification, RPA stage including RPA I stage (pT1–3, LODDS1–3), RPA II stage (pT4, LODDS1–3), RPA III stage (pT1–4, LODDS4), and RPA IV stage (pT1–4, LODDS5–6). Further, a significant difference ($p < 0.001$) in CSS was found (Figure 9A–C) in TNM stage and the two RPA stages. The 3-, 5-, and 8-year AUC of the LNR-RPA stage and LODDS-RPA stage were superior to TNM stage (Figure 9D–F).

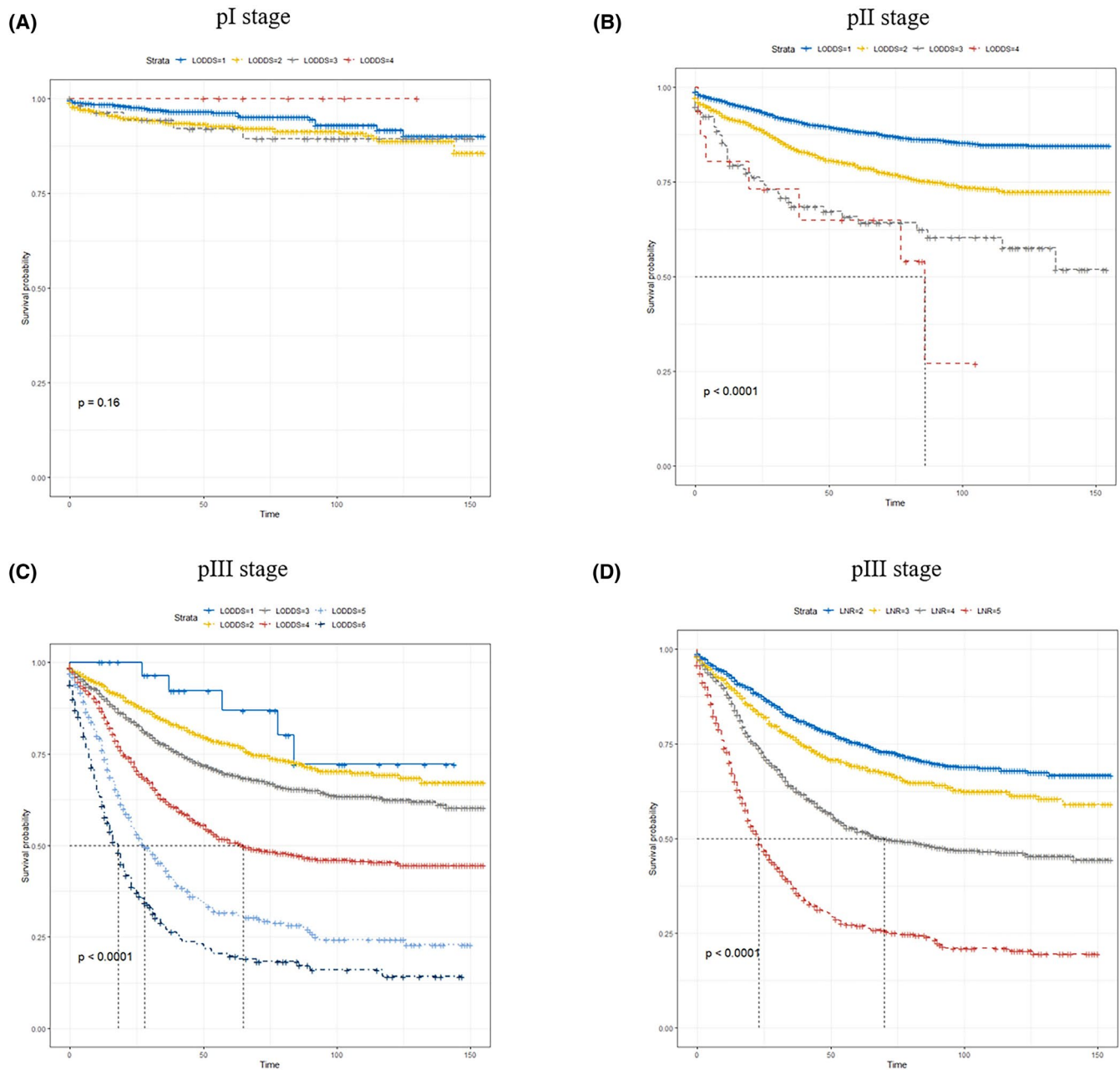


FIGURE 4 Kaplan–Meier survival curves for CSS in LODDS (A–C) and LNR (D) classification according to TNM stage. CSS, cancer-specific survival; LNR, lymph nodes ratio; LODDS, log odds of positive lymph nodes; TNM, tumor-node-metastasis

4 | DISCUSSION

In this study, we compared the predictive power of three lymph node classifications using a large population from the SEER database. LODDS showed great potential to distinguish colon MAC patients with differing clinical prognoses. This classification can distinguish different prognoses for patients with the same pN stage. As shown by time-ROC, the predictive capability of LODDS classifications always outperforms pN stage and LNR classifications. Cox regression analysis revealed that three

lymph node classifications (pN stage, LNR, LODDS) were significantly associated with CSS. Based upon the results, we constructed the nomograms prediction model, and have further confirmed the performance of this model using an external cohort. It can provide constructive information on prognosis to clinicians.

The histological type of cancer potentially correlates with biological properties and clinical outcomes. MAC is a relatively rare subtype that commonly manifests as an advanced stage and lymph node dissemination. Indeed, the effect of MAC on the survival of colon MAC

TABLE 6 Univariate and multivariable Cox analyses of CSS for colon MAC patients

Characteristics	Univariate			Multivariate 1			Multivariate 2			Multivariate 3		
	HR	95% CI	p value	HR	95% CI	p value	HR	95% CI	p value	HR	95% CI	p value
Age, years	1.021	1.017–1.024	<0.001	1.029	1.026–1.032	<0.001	1.029	1.025–1.032	<0.001	1.028	1.024–1.031	<0.001
Sex												
Male	Ref.			-			-			-		
Female	0.930	0.857–1.010	0.083	-			-			-		
Race			0.306									
White	Ref.			-			-			-		
Black	1.089	0.958–1.237	0.191	-			-			-		
Other/unknown	0.944	0.798–1.115	0.496	-			-			-		
Tumor size, cm												
≤5.5	Ref.			Ref.			Ref.			Ref.		
>5.5	1.275	1.175–1.384	<0.001	1.092	1.004–1.187	0.039	1.107	1.018–1.203	0.018	1.146	1.053–1.246	0.001
pT stage												
T1	Ref.			Ref.			Ref.			Ref.		
T2	1.252	0.783–2.001	0.347	1.134	0.709–1.813	0.600	1.146	0.717–1.832	0.570	1.245	0.778–1.990	0.361
T3	3.428	2.228–5.275	<0.001	2.392	1.551–3.688	<0.001	2.427	1.574–3.742	<0.001	2.807	1.821–4.328	<0.001
T4	8.291	5.376–12.787	<0.001	5.274	3.407–8.165	<0.001	5.219	3.372–8.080	<0.001	6.056	3.914–9.371	<0.001
pN stage												
N0	Ref.			Ref.			-			-		
N1a	2.069	1.813–2.360	<0.001	2.030	1.779–2.318	<0.001	-			-		
N1b	2.415	2.133–2.734	<0.001	2.254	1.989–2.555	<0.001	-			-		
N2a	3.791	3.342–4.301	<0.001	3.522	3.098–4.004	<0.001	-			-		
N2b	6.254	5.584–7.003	<0.001	5.750	5.121–6.455	<0.001	-			-		
LNR			<0.001						<0.001			
LNR1	Ref.			-			Ref.			-		
LNR2	1.782	1.650–2.125	<0.001	-			1.855	1.633–2.107	<0.001	-		
LNR3	2.429	2.116–2.787	<0.001	-			2.246	1.955–2.579	<0.001	-		
LNR4	3.950	3.530–4.421	<0.001	-			3.682	3.284–4.129	<0.001	-		
LNR5	8.292	7.346–9.360	<0.001	-			7.262	6.414–8.221	<0.001	-		
LODDS			<0.001									<0.001
LODDSI	Ref.			-			-			Ref.		

(Continues)

TABLE 6 (Continued)

Characteristics	Univariate			Multivariate 1			Multivariate 2			Multivariate 3		
	HR	95% CI	p value	HR	95% CI	p value	HR	95% CI	p value	HR	95% CI	p value
LODDS2	1.891	1.657–2.159	<0.001	-	-	-	-	-	-	1.917	1.678–2.189	<0.001
LODDS3	3.102	2.704–3.559	<0.001	-	-	-	-	-	-	3.032	2.641–3.480	<0.001
LODDS4	5.384	4.687–6.184	<0.001	-	-	-	-	-	-	5.100	4.434–5.866	<0.001
LODDS5	9.561	8.089–11.301	<0.001	-	-	-	-	-	-	8.559	7.232–10.130	<0.001
LODDS6	14.214	11.820–17.094	<0.001	-	-	-	-	-	-	12.065	10.008–14.545	<0.001

Abbreviations: CI, confidence interval; CSS, cancer-specific survival; HR, hazard ratio; LNR, lymph nodes ratio; LODDS, log odds of positive lymph nodes; MAC, mucinous adenocarcinoma.

patients remains debatable. Several studies have demonstrated that the MAC subtype was associated with a worse prognosis.^{6,9–11,24–26} In a population-based survival study, MAC had a poor outcome because of advanced disease.²⁷ This association has been confirmed in a large meta-analysis.²⁸ This study found that MAC portends worse survival. There was, however, a different result in other studies. They found that no differences between MAC and CA were observed in outcomes after correction for the AJCC stage.^{12–14,29} Those findings reflected potential heterogeneity in the prognosis of MAC patients with the same pN stage. As one of the most dominant factors in affecting the survival outcomes, the lymph nodes status and lymph node staging can provide critical information. Thus, identifying and optimizing the prognosis risk factors and guidance personalized treatment and surveillance become important for colon MAC patients.

Lymph nodes ratio has proved to be the better approach to lymph nodes classification in a variety of cancers.^{30–32} A number of studies demonstrated LNR had prognostic value in patients with colon cancer.^{33–36} Our findings in colon MAC patients were similar to previous studies. Specifically, in the present study, we observed that LNR classification could identify relatively good-prognosis patients in the advanced pN stage (e.g., pN2a and pN2b stage) and poor-prognosis patients in the early pN stage (e.g., pN1a stage).

The accurately discriminating prognosis was of significance in personalized treatment, and this approach enabled patients with advanced disease to have the confidence to active treatment. Whereas, unfortunately, the performance of LNR classification was limited for node-negative patients.³⁷ This limited the application and promotion of LNR classification.

In recent years, LODDS was introduced into cancer prognostic research. Benefiting from the unique computational approach, compared with LNR, LODDS largely circumvents the limitation of the status of negative lymph nodes and improves prognostic accuracy. In LODDS classification, the prognosis of those patients was further stratified by the number of negative lymph nodes, particularly in distinct differences in the number of retrieved. However, the outcomes of patients with negative lymph nodes were thought to be similar in LNR classification. On the other hand, our results revealed, there are differential outcomes between LODDS subgroups in the same LNR classifications. It implied LNR classification might be unable to discriminate well the survival of positive lymph nodes patients with the same LNR value but different total lymph node dissections. LODDS was significantly associated with overall survival as published in the study by Wang et al.³⁸ However, their studies were limited to stage III colon cancer, while the role of LODDS in stage I/II colon cancer was not investigated.^{19–21} In addition, several previous studies

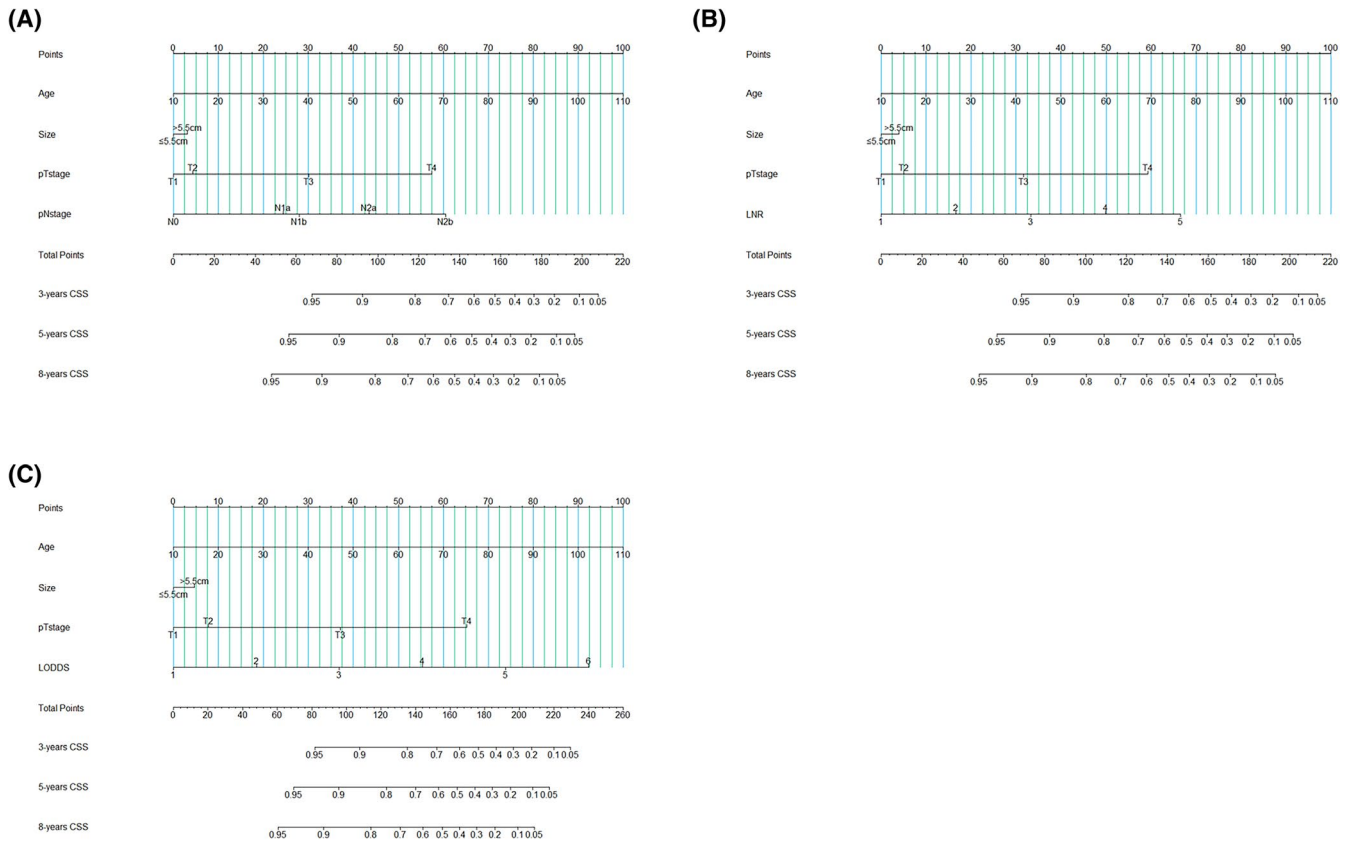


FIGURE 5 Nomograms based on pN stage (A), LNR classification (B), and LODDS classification (C) predicting CSS for colon MAC patients. CSS, cancer-specific survival; LNR, lymph nodes ratio; LODDS, log odds of positive lymph nodes; MAC, mucinous adenocarcinoma

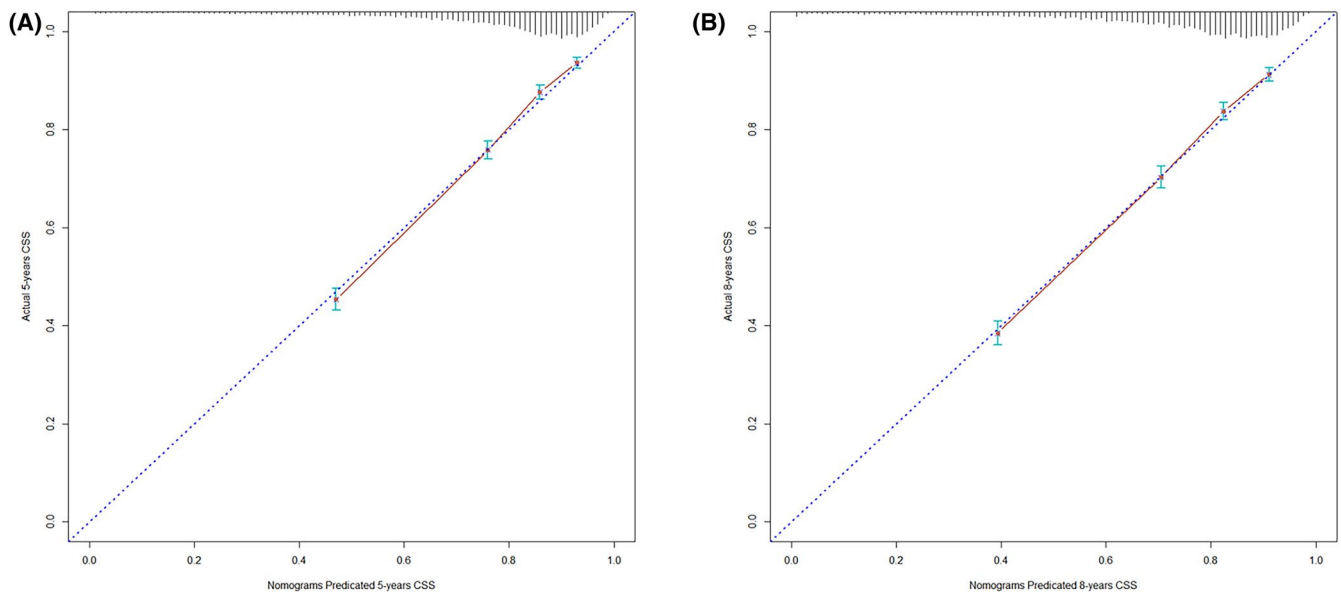


FIGURE 6 Calibration curve of 5-year (A) and 8-year (B) CSS for LODDS classification. CSS, cancer-specific survival; LODDS, log odds of positive lymph nodes

were also suggested the value of LODDS was in prognosis prediction of non-metastatic colon cancer. Indeed, this is a generalized observation for all histology types of colon

cancer. Those results may not satisfy the need for personalized cancer therapies. Meanwhile, the lack of external validation limited the generalizability of those studies. In

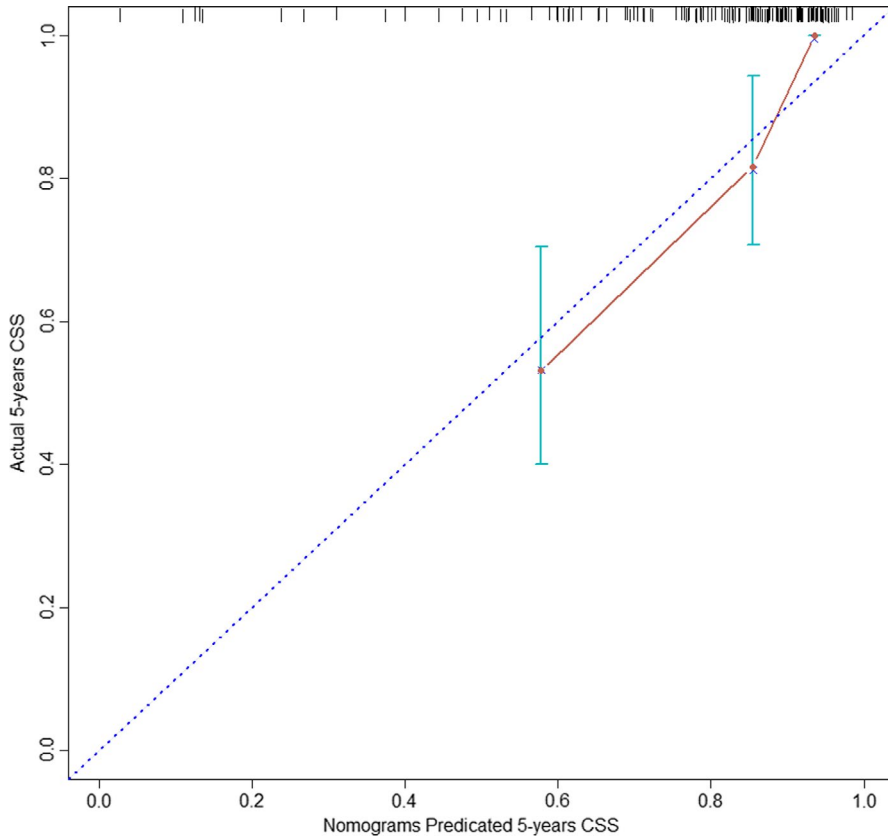


FIGURE 7 Calibration curve of 5-year CSS in the external cohort. CSS, cancer-specific survival

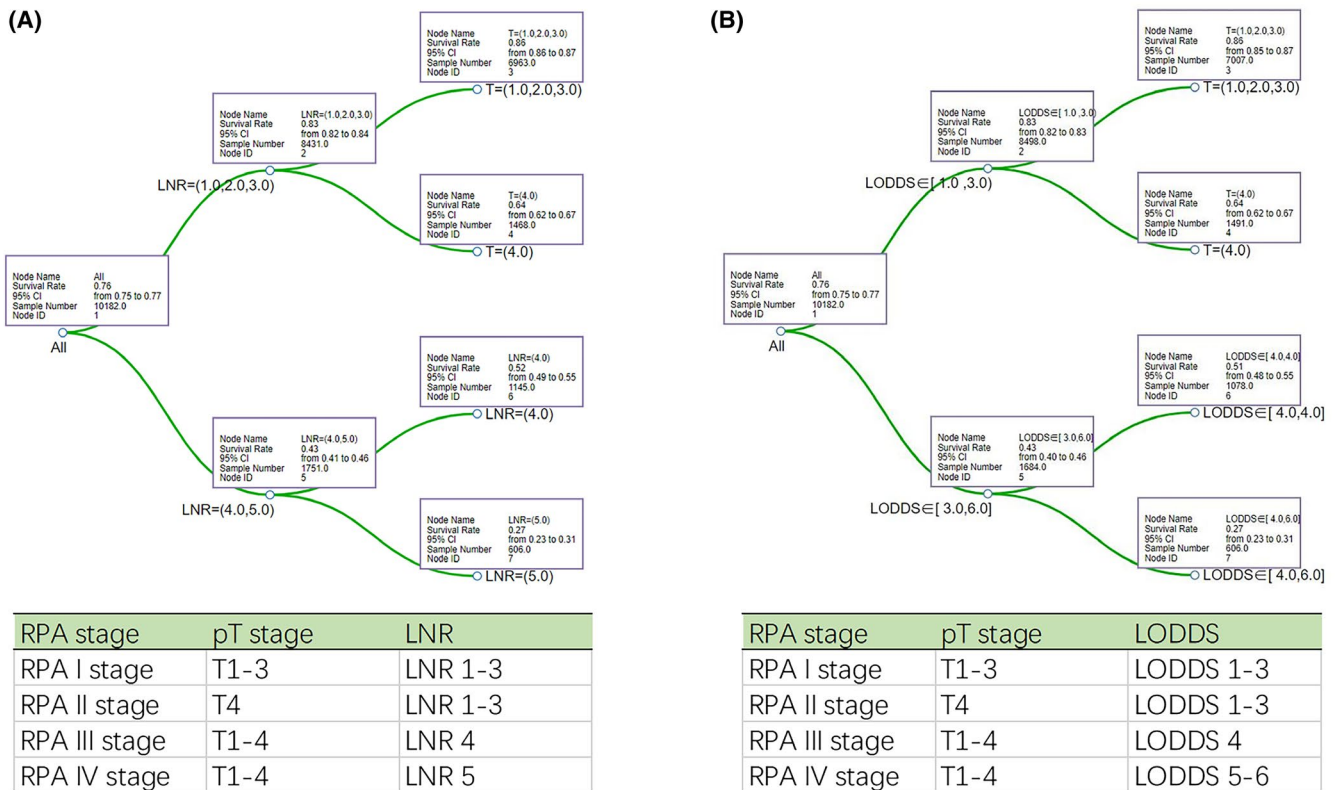


FIGURE 8 RPA stage based on LNR classification (A) and LODDS classification (B). LNR, lymph nodes ratio; LODDS, log odds of positive lymph nodes; RPA, recursive partitioning analysis

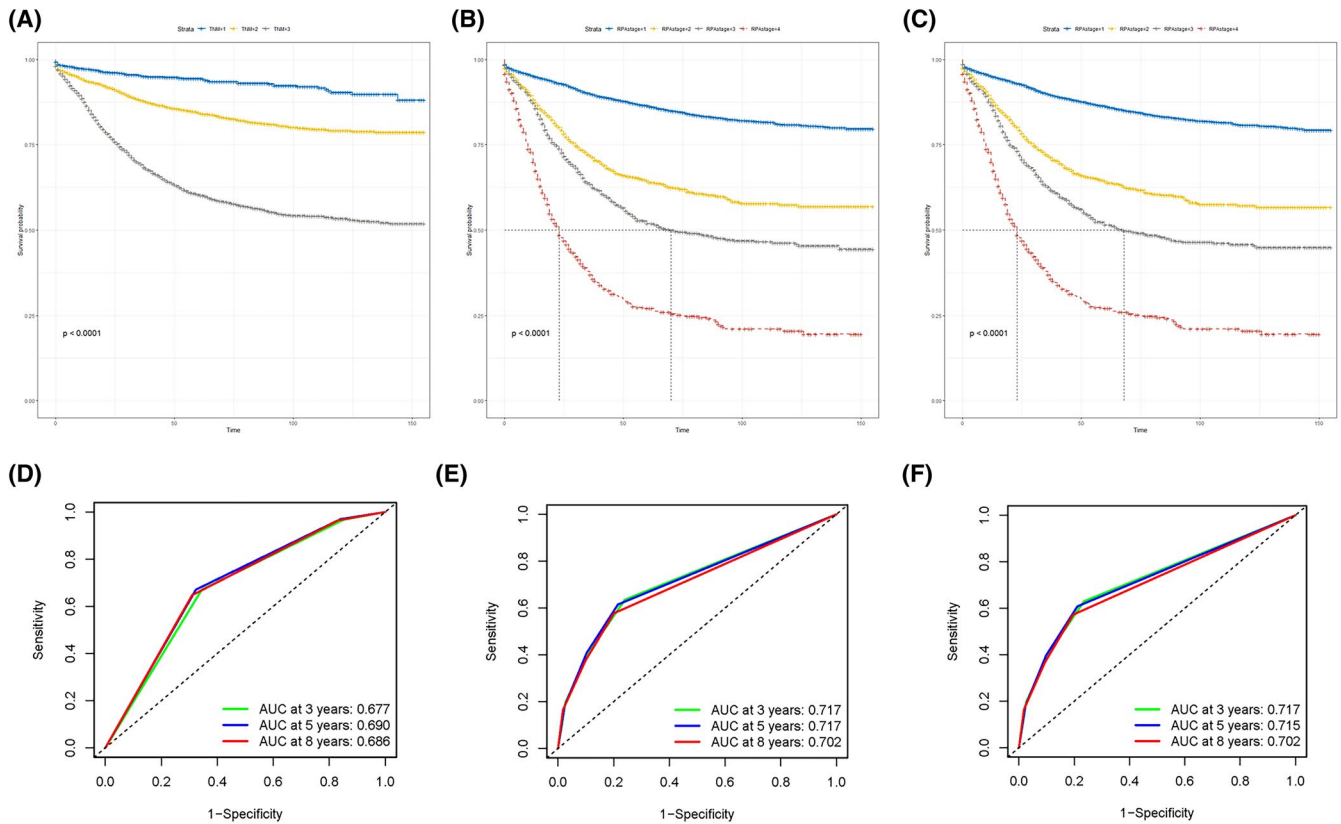


FIGURE 9 Kaplan–Meier survival curves and AUC for TNM stage (A, D), LNR-RPA stage (B, E), and LODDS-RPA stage (C, F). AUC, the areas under the ROC curve; LNR, lymph nodes ratio; LODDS, log odds of positive lymph nodes; RPA, recursive partitioning analysis

this context, we investigated in depth the potential role of LODDS in colon MAC patients and performed external validation using our cohort.

In the present study, we regroup MAC patients based on the value of LODDS with 0.5 intervals. Lastly, six subgroups were generated with significant differences in CSS between adjacent groups. In either pN stage, differences in survival among LODDS subgroups were observed. This implies that MAC patients with the same pN stage were heterogeneous, and LODDS classification can help clinicians identify different prognoses and develop personalized treatment and follow-up strategies. Meanwhile, LODDS classification can aid patients who with lymph node metastases but the early LODDS subgroup enhances confidence in cancer therapy. However, for patients with pI stage, there were no differences in CSS in the LODDS subgroup, which was possibly due to early disease. Furthermore, Cox regression analysis LODDS was an independent risk factor of CSS. We further developed a nomograms model for three lymph nodes classifications, and LODDS classification nomograms exhibited the best performance toward prognostic stratification, compared with the AJCC stage and LNR. Meanwhile, we validated nomograms using an external validation cohort and demonstrated stable performance. Additionally, we constructed a new staging system based on pT stage and

LODDS. In RPA stage, a better survival was observed in node-positive MAC patients with early LODDS stage, which was clinically significant.

There are limitations in the present study. First, despite as a population-based database, SEER lacked some tumor-related (e.g., vascular invasion) and treatment-related information (e.g., the details of radiotherapy and chemotherapy), and we cannot adjust potential confounders. Second, the inability to subdivide pT4a and pT4b status in the pT4 stage in patients diagnosed before 2010 from the SEER database, which made more accurate analyses difficult. Third, the number of external validation cohorts were relatively limited. As a consequence, subsequent studies should recruit a large sample and perform multicenter studies to further confirm and generalize our results.

5 | CONCLUSION

In summary, we proved the superiority of LODDS in prognostic stratification for colon MAC patients compared with pN stage and LNR. LODDS classification nomograms and RPA stage can provide stable assessments of patient clinical outcomes and contributed to personalized cancer treatment.

ACKNOWLEDGMENTS

The authors appreciate the SEER database for open access to the data. The authors thank all the staff in the Department of colorectal surgery, The First Affiliated Hospital of Fujian Medical University, Fuzhou, Fujian Province, People's Republic of China, and all the staff in Department of colorectal surgery, Fujian Medical University Union Hospital, Fuzhou, Fujian Province, People's Republic of China.

CONFLICT OF INTEREST

The authors have declared that no competing interests exist.

DATA AVAILABILITY STATEMENT

The data of the SEER cohort were open access from the SEER database, and the data of the external validation group are available contacting the corresponding author.

ORCID

Guoxian Guan  <https://orcid.org/0000-0001-9883-3139>

REFERENCES

- Sung H, Ferlay J, Siegel RL, et al. Global cancer statistics 2020: GLOBOCAN estimates of incidence and mortality worldwide for 36 cancers in 185 countries. *CA Cancer J Clin*. 2021;71(3):209-249.
- Siegel RL, Miller KD, Goding Sauer A, et al. Colorectal cancer statistics, 2020. *CA Cancer J Clin*. 2020;70(3):145-164.
- Luo C, Cen S, Ding G, Wu W. Mucinous colorectal adenocarcinoma: clinical pathology and treatment options. *Cancer Commun (Lond)*. 2019;39(1):13.
- Hugen N, Brown G, Glynn-Jones R, de Wilt JHW, Nagtegaal ID. Advances in the care of patients with mucinous colorectal cancer. *Nat Rev Clin Oncol*. 2016;13(6):361-369.
- Hugen N, Van Beek JJP, de Wilt JHW, Nagtegaal ID. Insight into mucinous colorectal carcinoma: clues from etiology. *Ann Surg Oncol*. 2014;21(9):2963-2970.
- Numata M, Shiozawa M, Watanabe T, et al. The clinicopathological features of colorectal mucinous adenocarcinoma and a therapeutic strategy for the disease. *World J Surg Oncol*. 2012;10:109.
- Luo C, Cen S, Ying J, et al. Tumor clinicopathological characteristics and their prognostic value in mucinous colorectal carcinoma. *Future Oncol*. 2019;15(35):4095-4104.
- Yamaguchi T, Taniguchi H, Fujita S, et al. Clinicopathological characteristics and prognostic factors of advanced colorectal mucinous adenocarcinoma. *Histopathology*. 2012;61(2):162-169.
- Kanemitsu Y, Kato T, Hirai T, et al. Survival after curative resection for mucinous adenocarcinoma of the colorectum. *Dis Colon Rectum*. 2003;46(2):160-167.
- Papadopoulos VN, Michalopoulos A, Netta S, et al. Prognostic significance of mucinous component in colorectal carcinoma. *Tech Coloproctol*. 2004;8(S1):s123-s125.
- Soliman BG, Karagkounis G, Church JM, Plesec T, Kalady MF. Mucinous histology signifies poor oncologic outcome in young patients with colorectal cancer. *Dis Colon Rectum*. 2018;61(5):547-553.
- Catalano V, Loupakis F, Graziano F, et al. Prognosis of mucinous histology for patients with radically resected stage II and III colon cancer. *Ann Oncol*. 2012;23(1):135-141.
- Nitsche U, Zimmermann A, Späth C, et al. Mucinous and signet-ring cell colorectal cancers differ from classical adenocarcinomas in tumor biology and prognosis. *Ann Surg*. 2013;258(5):775-783.
- Ott C, Gerken M, Hirsch D, et al. Advanced mucinous colorectal cancer: epidemiology, prognosis and efficacy of chemotherapeutic treatment. *Digestion*. 2018;98(3):143-152.
- Jin W, Zhu Z, Wu Y, et al. Prognostic value of log odds of positive lymph nodes in patients with resectable oral squamous cell carcinoma. *Oral Oncol*. 2020;108:104709.
- Yu Y, Zhang P, Yao R, et al. Prognostic value of log odds of positive lymph nodes in node-positive lung squamous cell carcinoma patients after surgery: a SEER population-based study. *Transl Lung Cancer Res*. 2020;9(4):1285-1301.
- Conci S, Ruzzenente A, Sandri M, et al. What is the most accurate lymph node staging method for perihilar cholangiocarcinoma? Comparison of UICC/AJCC pN stage, number of metastatic lymph nodes, lymph node ratio, and log odds of metastatic lymph nodes. *Eur J Surg Oncol*. 2017;43(4):743-750.
- Amini N, Kim Y, Wilson A, et al. Prognostic implications of lymph node status for patients with gallbladder cancer: a multi-institutional study. *Ann Surg Oncol*. 2016;23(9):3016-3023.
- Persiani R, Cananzi FCM, Biondi A, et al. Log odds of positive lymph nodes in colon cancer: a meaningful ratio-based lymph node classification system. *World J Surg*. 2012;36(3):667-674.
- Baqar AR, Wilkins S, Wang W, Oliva K, McMurrick P. Log odds of positive lymph nodes is prognostically equivalent to lymph node ratio in non-metastatic colon cancer. *BMC Cancer*. 2020;20(1):762.
- Fortea-Sanchis C, Martínez-Ramos D, Escrig-Sos J. The lymph node status as a prognostic factor in colon cancer: comparative population study of classifications using the logarithm of the ratio between metastatic and nonmetastatic nodes (LODDS) versus the pN-TNM classification and ganglion ratio systems. *BMC Cancer*. 2018;18(1):1208.
- Song Y-X, Gao P, Wang Z-N, et al. Which is the most suitable classification for colorectal cancer, log odds, the number or the ratio of positive lymph nodes? *PLoS One*. 2011;6(12):e28937.
- Xie Y, Luo X, Li H, et al. autoRPA: a web server for constructing cancer staging models by recursive partitioning analysis. *Comput Struct Biotechnol J*. 2020;18:3361-3367.
- Yoshioka Y, Togashi Y, Chikugo T, et al. Clinicopathological and genetic differences between low-grade and high-grade colorectal mucinous adenocarcinomas. *Cancer*. 2015;121(24):4359-4368.
- Jimi S-I, Hotokezaka M, Ikeda T, et al. Clinicopathological features, postoperative survival and prognostic variables for cancer-related survival in patients with mucinous colorectal carcinoma. *Surg Today*. 2015;45(3):329-334.
- Li J, Yang L, Bai F, et al. Clinicopathological, molecular features and prognosis of colorectal cancer with mucinous component. *Future Oncol*. 2021;17(11):1351-1362.
- Nitsche U, Friess H, Agha A, et al. Prognosis of mucinous and signet-ring cell colorectal cancer in a population-based cohort. *J Cancer Res Clin Oncol*. 2016;142(11):2357-2366.

28. Verhulst J, Ferdinande L, Demetter P, Ceelen W. Mucinous subtype as prognostic factor in colorectal cancer: a systematic review and meta-analysis. *J Clin Pathol.* 2012;65(5):381-388.
29. Wang L, Hirano Y, Heng G, et al. Mucinous adenocarcinoma as a high-risk factor in stage II colorectal cancer: a propensity score-matched study from Japan. *Anticancer Res.* 2020;40(3):1651-1659.
30. Vaccaro CA, Im V, Rossi GL, et al. Lymph node ratio as prognosis factor for colon cancer treated by colorectal surgeons. *Dis Colon Rectum.* 2009;52(7):1244-1250.
31. Yamashita K, Hosoda K, Ema A, Watanabe M. Lymph node ratio as a novel and simple prognostic factor in advanced gastric cancer. *Eur J Surg Oncol.* 2016;42(9):1253-1260.
32. Ke B, Song X-N, Liu N, Zhang R-P, Wang C-L, Liang H. Prognostic value of the lymph node ratio in stage III gastric cancer patients undergoing radical resection. *PLoS One.* 2014;9(5):e96455.
33. Wang J, Hassett JM, Dayton MT, Kulaylat MN. Lymph node ratio: role in the staging of node-positive colon cancer. *Ann Surg Oncol.* 2008;15(6):1600-1608.
34. Lee H-Y, Choi H-J, Park K-J, et al. Prognostic significance of metastatic lymph node ratio in node-positive colon carcinoma. *Ann Surg Oncol.* 2007;14(5):1712-1717.
35. Derwinger K, Carlsson G, Gustavsson B. A study of lymph node ratio as a prognostic marker in colon cancer. *Eur J Surg Oncol.* 2008;34(7):771-775.
36. Rosenberg R, Friederichs J, Schuster T, et al. Prognosis of patients with colorectal cancer is associated with lymph node ratio: a single-center analysis of 3,026 patients over a 25-year time period. *Ann Surg.* 2008;248(6):968-978.
37. Gleisner AL, Mogal H, Dodson R, et al. Nodal status, number of lymph nodes examined, and lymph node ratio: what defines prognosis after resection of colon adenocarcinoma? *J Am Coll Surg.* 2013;217(6):1090-1100.
38. Wang J, Hassett JM, Dayton MT, Kulaylat MN. The prognostic superiority of log odds of positive lymph nodes in stage III colon cancer. *J Gastrointest Surg.* 2008;12(10):1790-1796.

How to cite this article: Cai H, Xu T, Zhuang Z, et al. Value of the log odds of positive lymph nodes for prognostic assessment of colon mucinous adenocarcinoma: Analysis and external validation. *Cancer Med.* 2021;10:8542–8557. doi:[10.1002/cam4.4366](https://doi.org/10.1002/cam4.4366)