

BMJ Open The chronic kidney disease Water Intake Trial (WIT): results from the pilot randomised controlled trial

William F Clark,¹ Jessica M Sontrop,^{1,2} Shih-Han Huang,¹ Kerri Gallo,² Louise Moist,^{1,2} Andrew A House,¹ Matthew A Weir,¹ Amit X Garg^{1,2}

To cite: Clark WF, Sontrop JM, Huang S-H, *et al.* The chronic kidney disease Water Intake Trial (WIT): results from the pilot randomised controlled trial. *BMJ Open* 2013;**3**:e003666. doi:10.1136/bmjopen-2013-003666

► Prepublication history for this paper is available online. To view these files please visit the journal online (<http://dx.doi.org/10.1136/bmjopen-2013-003666>).

Received 25 July 2013
Revised 31 October 2013
Accepted 20 November 2013



CrossMark

¹Division of Nephrology, Department of Medicine, London Health Sciences Centre, London, Ontario, Canada

²Department of Epidemiology & Biostatistics, Western University, London, Ontario, Canada

Correspondence to

Dr William F Clark;
William.Clark@lhsc.on.ca

ABSTRACT

Background and objectives: Increased water intake may benefit kidney function. Prior to initiating a larger randomised controlled trial (RCT), we examined the safety and feasibility of asking adults with chronic kidney disease (CKD) to increase their water intake.

Design, setting, participants and measurements: Beginning in October 2012, we randomly assigned 29 adults with stage 3 CKD (estimated glomerular filtration rate (eGFR) 30–60 mL/min/1.73 m² and albuminuria) to one of the two groups of water intake: hydration (n=18) or standard (n=11). We asked the hydration group to increase their water intake by 1.0–1.5 L/day (in addition to usual intake, depending on sex and weight) for 6 weeks, while the control group carried on with their usual intake. Participants collected a 24 h urine sample at baseline and at 2 and 6 weeks after randomisation. Our primary outcome was the between-group difference in change in 24 h urine volume from baseline to 6 weeks.

Results: (63%) of participants were men, 81% were Caucasians and the average age was 61 years (SD 14 years). The average baseline eGFR was 40 mL/min/1.73 m² (SD 11 mL/min/1.73 m²); the median albumin to creatinine ratio was 19 mg/mmol (IQR 6–74 mg/mmol). Between baseline and 6-week follow-up, the hydration group's average 24 h urine volume increased by 0.7 L/day (from 2.3 to 3.0 L/day) and the control group's 24 h urine decreased by 0.3 L/day (from 2.0 to 1.7 L/day; between-group difference in change: 0.9 L/day (95% CI 0.4 to 1.5; p=0.002)). We found no significant changes in urine, serum osmolality or electrolyte concentrations, or eGFR. No serious adverse events or changes in quality of life were reported.

Conclusions: A pilot RCT indicates adults with stage 3 CKD can successfully and safely increase water intake by up to 0.7 L/day in addition to usual fluid intake.

Trial registration Registered with Clinical Trials—government identifier: NCT01753466.

BACKGROUND

Evidence from animal and human studies suggests a specific beneficial effect of water intake on the kidney.^{1–10} Increased water intake suppresses plasma vasopressin,^{6 11} which is an

Strengths and limitations of the study

- The strength of this pilot randomised controlled trial was that it fulfilled the CONSORT document guidelines. It provided a clear signal of safety feasibility and the absence of a negative impact on the quality of life of the hydration intervention relative to the control chronic kidney disease population studied.
- The weaknesses of the study are that it was only of 6 weeks duration and that the separations, although consistent, may not be observed in the 1 year anticipated large randomised controlled trial. Another limitation of this pilot is that there are only 29 participants who were studied and thus the results may not be representative of a much larger population study. These are inevitable weaknesses or limitations of a pilot study, but even with these small numbers, the signal concerning safety and efficacy was clear and significant.

antidiuretic hormone that regulates thirst and water conservation in mammals. While essential for water regulation, vasopressin has vasoconstrictive effects and there is evidence that increased plasma levels can have negative effects on renal haemodynamics, blood pressure and ventricular function.^{12–18} In animal models, an increased water intake has been shown to reduce proteinuria and slow the progression of chronic kidney disease (CKD).^{6 8} In humans, several observational studies report positive associations between greater water intake and kidney function.^{1–4 10} In a recently published prospective cohort study of 2000 Canadian adults without kidney disease, higher urine volume at baseline was associated with slower renal decline over follow-up.¹ Similarly, in two cross-sectional analyses of Australian and American cohorts, higher self-reported water intake was associated with better kidney function.^{2 10} Most recently, researchers identified chronic dehydration from heat stress as the most likely causal factor in a perplexing epidemic of CKD in Central America.^{3 4}

Taken together, these findings support a protective effect of greater water intake on the kidney; however, evidence from a large, well-designed randomised controlled trial is needed to determine if higher water intake can slow the rate of kidney function decline.

We designed a randomised controlled trial to test whether increased water intake can slow renal decline in adults with stage 3 CKD. However, due to the expressed concerns by the clinicians about increasing hydration in patients with CKD and the potential for fluid overload and water intoxication, we conducted a 6-week pilot trial to assess the feasibility, safety and quality of life changes that occur when adults with CKD increase their water intake by 1.0–1.5 L/day (in addition to usual consumed beverages) for 6 weeks.¹² This report describes the results of this pilot trial.

METHODS

Design, setting and participants

We conducted a parallel-group randomised controlled pilot trial (London, Ontario, Canada 2012–2013). Adult patients (age 30–80 years) attending a CKD Clinic at the London Health Sciences Centre (Victoria Hospital), who met the study's eligibility criteria, were invited to participate. We defined CKD (stage 3) as the presence of reduced kidney function (at least one estimated glomerular filtration rate (eGFR) 30–60 mL/min/1.73 m²) and proteinuria (albumin/creatinine >2.8 mg/mmol (if female) or >2.0 mg/mmol if male) from a spot urine sample or trace protein (albustix). We used the CKD Epidemiology Collaboration (CKD-EPI) equation to calculate eGFR¹⁹ from serum creatinine. We excluded those who met any of the following criteria: required fluid restriction (<1.5 L/day) for kidney disease, heart failure or liver disease; lived too far from the clinic to reliably participate in follow-up visits; self-reported fluid intake \geq 10 cups/day or 24 h urine volume \geq 3 L; enrolled in another trial that could influence the intervention, outcomes or data collection of this trial; received a dialysis treatment in the past month; kidney transplant recipient (or on waiting list); pregnant or breastfeeding; a history of symptomatic kidney stones in the past 5 years; less than 2 years life expectancy; serum sodium \leq 130 mmol/L; serum calcium >2.6 mmol/L and currently taking lithium (affects thirst and urination²⁰) or high daily doses of the following diuretics:

hydrochlorothiazide >25 mg/day, indapamide >1.25 mg/day, furosemide >40 mg/day or metolazone >2.5 mg/day.

Enrolment

The patient's nephrologist invited interested patients to speak with a research assistant who explained the study, confirmed eligibility and obtained consent. To confirm that urine volume was less than 3 L/day at baseline, the participants were asked to provide a 24 h urine sample within 2 weeks of enrolment. A research assistant arranged to meet the participants the same day the 24 h collection was completed, and a blood sample for baseline laboratory measures was obtained. Once eligibility was confirmed, the participants were randomised to the hydration group or the control group and those in the hydration group were instructed on the intervention.

Randomisation and intervention

Participants were randomised in block sizes of three by computer-generated randomisation to the hydration group or the control group (2:1), stratified by gender. An unequal randomisation of 2:1 vs 1:1 was chosen to provide experience delivering the hydration intervention to more patients. The random allocation was concealed to patients, their healthcare providers and research staff. The hydration group was asked to drink 1–1.5 L water per day for 6 weeks, in addition to usual consumed beverages, depending on sex, weight and 24 h urine osmolality (tables 1 and 2). To encourage adherence to the allocated water intake, the participants in both groups were given reusable drinking containers and research personnel maintained regular contact with the participants and enquired about regimen tolerance and adherence. Participants randomised to the control group were advised to continue usual fluid intake or to decrease fluid intake by 1–2 cups/day depending on their baseline 24 h urine osmolality (table 2). Continued hydration coaching based on 24 h urine osmolality was conducted after the second 24 h urine sample (2 weeks after randomisation) was obtained (table 2).²¹

Objectives and outcomes

The primary aim of this pilot trial was to assess the feasibility and safety of asking adults with stage 3 CKD to follow the above hydration intervention. Our primary assessment of feasibility was to compare the between-group change in

Table 1 Hydration intervention by sex and weight

Sex	Weight (kg)	Recommended increase in water intake			
		Daily total (L/day)	Breakfast	Lunch	Dinner
Women	<70	1.0	250 mL (1 cup)	500 mL (2 cups)	250 mL (1 cup)
	\geq 70	1.25	250 mL (1 cup)	500 mL (2 cups)	500 mL (2 cups)
Men	<70	1.25	250 mL (1 cup)	500 mL (2 cups)	500 mL (2 cups)
	\geq 70	1.5	500 mL (2 cups)	500 mL (2 cups)	500 mL (2 cups)

Table 2 Informed hydration coaching based on 24 h urine volume and osmolality

Trial group	Urine osmolality (mOsm/kg)	Hydration coaching
Hydration	<300	Maintain current water intake
	300–500	Increase water intake by an additional 1–2 cups/day
	>500	Increase water intake by an additional 2 cups/day
Control	<300	Reduce water intake by 1–2 cups/day*
	300–500	Reduce water intake by 1 cup/day*
	>500	Maintain current water intake

*If urine volume >1.5 L/day.

24 h urine volume from baseline to 6-week follow-up. Our primary safety endpoints were the proportion of participants with a serum sodium <130 mmol/L at any point during study follow-up and the between-group change in serum sodium values. Finally, we compared between-group changes in kidney function, physical health and health-related quality of life (HRQL).

Data collection and measures

Baseline data included the most recent list of medications, height, weight and blood pressure. Seated blood pressure was measured with a Welch Allyn Sphygmomanometer using a standardised protocol. Weight was measured at baseline and again at the final follow-up using a gravity-weighted scale. At baseline and 6 weeks after randomisation, participants completed a survey on their medical history and answered questions about their HRQL from the Kidney Disease Health Related Quality of Life (KDQOL-SF) questionnaire.^{22 23} Two weeks after randomisation, all participants completed a 3-day diet record and had a 45 min consultation with a renal dietician. Diet records were analysed for daily protein, sodium and fluid intake. Blood samples were obtained at baseline and every 2 weeks after randomisation. The participants collected a 24 h urine sample at baseline and again between 2 and 6 weeks after randomisation.

Laboratory analysis

Serum creatinine was measured using the isotope dilution/mass spectroscopy-traceable enzymatic method. Blood sodium concentrations were measured with indirect ion-selective electrodes and urea concentrations were measured with enzymatic photometric methods. Serum osmolality was measured by freezing point depression using an advanced instrument MicroOsmometer. The serum cystatin C was measured by nephelometry. Twenty-four-hour urine creatinine was measured using enzymatic methods and the 24 h albumin:creatinine ratio was analysed using

an immunoturbidimetric assay. Twenty-four-hour urine sodium and potassium were measured with indirect ion-selective electrodes. Urine specific gravity was measured using a digital urine-specific gravity PEN Refractometer (PEN-Urine S.G.)

Statistical analysis

Normally distributed data were summarised using means and SD; non-normally distributed data were summarised using medians and IQR. We followed an intent-to-treat analysis: all randomised participants were included in the analysis and analysed according to group assignment. We compared the between-group change in urine volume, kidney function, electrolytes and other variables using the independent t test or Mann-Whitney U, as appropriate. Bivariate correlations were estimated using the Pearson product-moment correlation coefficient (r). No subgroup analyses were performed. Data were analysed using IBM SPSS Statistics V.19.

RESULTS

Enrolment occurred between 16 October 2012 and 29 January 2013. During this time, 74 patients met the initial eligibility criteria and were approached for trial participation. A flow diagram of patient selection and follow-up is presented in figure 1. In total, 29 participants were randomised. One participant withdrew from the study after randomisation due to a flare-up of Crohn's disease.

Sixty-three per cent of the participants were men, 81% were Caucasian; and the average age was 61 years (SD 14); 54% of the participants had diabetes and 86% had hypertension. The average eGFR at baseline was 40 mL/min/1.73 m² (SD 11). Characteristics of participants randomised to the hydration (n=18) and control groups (n=11) are shown in table 3. Although randomisation protects against baseline differences between the groups, baseline differences may occur in smaller samples such as this. Participants randomised to the control group were older, had more comorbidities and had more diuretic use compared with those in the hydration group.

A 24 h urine volume

Change in 24 h urine volume is shown in figure 2 and table 4. Between baseline and 6-week follow-up, the hydration group's 24 h urine volume increased by 0.7 L/day (from 2.3 L to 3.0 L/day) and the control group's 24 h urine volume decreased by 0.3 L/day (from 2.0 L to 1.7 L/day; between-group difference in change: 0.9 L/day; 95% CI 0.4 to 1.5; p=0.002). The difference between groups at the last follow-up was 1.3 L/day (p=0.005).

Serum sodium

Serum sodium concentration remained above 130 mmol/L for all participants at all follow-up points and was similar between the groups at all comparison points (table 4). Change from baseline did not differ

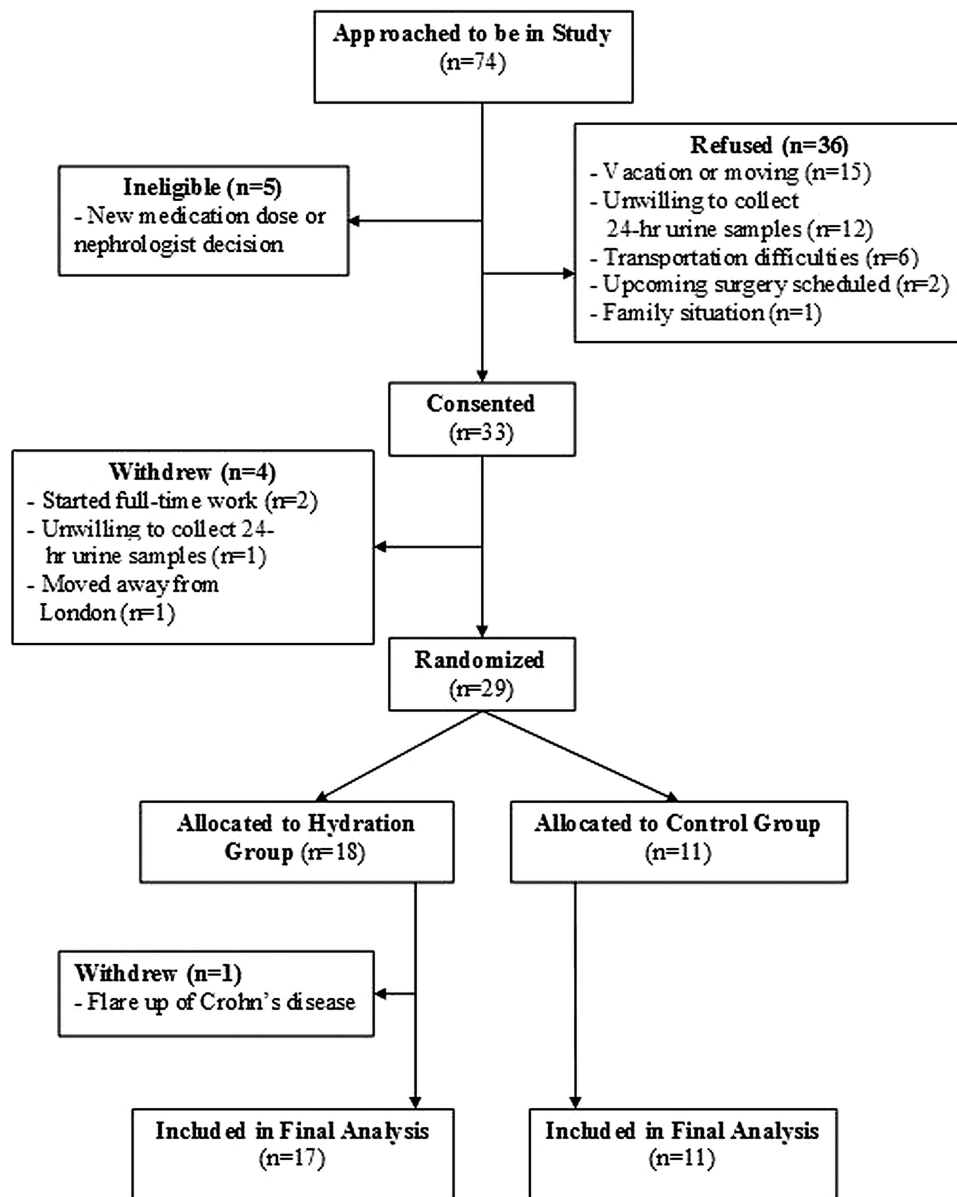


Figure 1 Flow diagram of participant selection and follow-up.

between the groups ($p=0.37$). At the final follow-up, the average sodium concentration was 138 mmol/L in both groups.

Kidney function, electrolytes and osmolality

Measures of kidney function, electrolytes and osmolality remained within expected ranges for patients with CKD (table 4). Urine osmolality decreased by 76 mOsm/kg in the hydration group and by 19 mOsm/kg in the control group; $p=0.27$ for between-group change. The 24 h urine osmolality did not vary significantly with eGFR at baseline or follow-up. 24 h urine creatinine remained within 10% of baseline values.

HRQL and diet

No appreciable differences in HRQL were evident (table 5). Although the hydration group reported a higher

frequency of night-time urination at final follow-up (2.6 vs 1.8), HRQL sleep scores were similar between the groups at final follow-up (82 in both groups; $p=0.46$). Average intakes of sodium and protein (measured from a 3-day diet record 2 weeks after randomisation) were similar between the hydration and control groups (average sodium intake was 259 (SD 275) and 201 mmol/day (SD 161), respectively ($p=0.56$); average protein intake was 1.1 (SD 0.2) and 1.1 g/kg/day (SD 0.3), respectively ($p=0.52$)). Body mass index was similar between the hydration and control groups at baseline (table 1) and was 30 kg/m² in each group at the 6-week follow-up ($p=0.28$ for between-group change). As shown in figure 3, the average self-reported fluid intake (2 weeks after randomisation) was strongly correlated with 24 h urine volume ($r=0.84$; $p<0.001$). As well, mean fluid intake was significantly higher in the hydration group than in the control

Table 3 Baseline characteristics by treatment assignment

	Treatment group	
	Control n=11	Hydration n=18
Mean age, years (SD)	67 (11)	59 (14)
Men (%)	64	67
Caucasian (%)	91	78
Weight, kg (SD)	86 (19)	92 (22)
Body mass index, kg/m ² (SD)	30 (6)	31 (6)
Waist circumference (cm)	110 (11)	101 (18)
Smoking status (%)		
Current	0	11
Former	73	53
Primary diagnosis of chronic kidney disease (%)		
Diabetes	46	17
Hypertension	27	17
Polycystic kidney disease	0	17
Unknown/other	36	50
Comorbidities (%)		
Cerebrovascular/TIA	9	6
Coronary artery disease	9	6
Hypertension	100	77
Diabetes	64	47
Peripheral vascular disease	27	6
Hyperlipidaemia	73	53
Gastric bleeding	18	0
COPD	9	6
Malignancy	0	12
Mean blood pressure, mm Hg (SD)		
Systolic	143 (17)	140 (22)
Diastolic	73 (11)	80 (11)
Heart rate, bpm (SD)	80 (11)	80 (13)
eGFR, mL/min/1.73 m ² (SD)	39 (11)	41 (10)
Hematocrit, L/L (SD)	0.39 (0.05)	0.40 (0.06)
HbA1c (SD)	0.07 (0.02)	0.07 (0.01)
Medications (%)		
Aspirin	46	22
ACE/ARB inhibitors	64	67
Diuretics	82	28
Calcium channel blockers	46	22
Beta blockers	27	17
Angiotensin II receptor blockers	46	17
Vasopressor	0	6
Statin	64	44
First degree relative with hypertension or kidney failure	46	61

ACE/ARB, angiotensin-converting enzyme/angiotensin receptor blockers; COPD, chronic obstructive pulmonary disorder; eGFR, estimated glomerular filtration rate; HbA1c, glycated haemoglobin; TIA, transient ischemic attack.

group: 2.8 L/day (SD 0.8) vs 1.9 L/day (SD 0.5), respectively; $p=0.002$.

Adverse events

No serious adverse events were reported. One patient in the hydration group reported transient nausea; however,

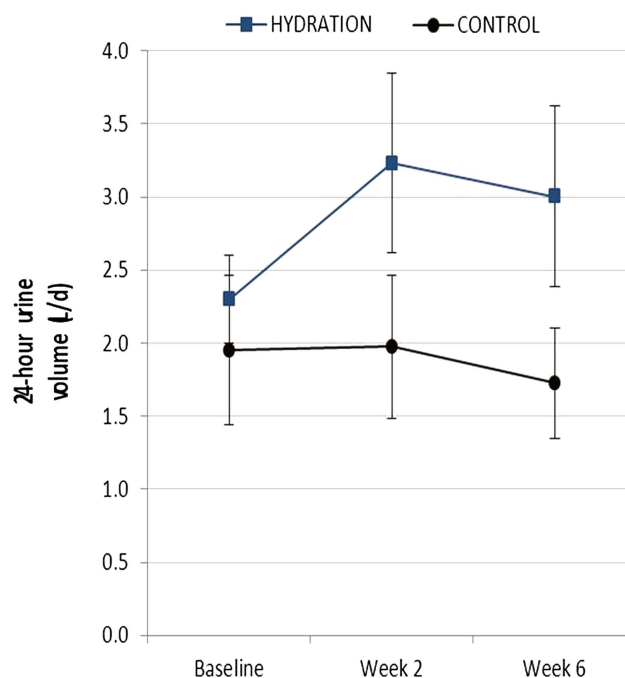


Figure 2 Change in 24 h urine volume after randomisation to hydration or control intervention.

serum sodium was 140 mmol/L, eGFR was 44 mL/min/1.73 m² and no other symptoms were noted. One patient in the control group had low urine potassium 2 weeks after randomisation; however, this was due to severe diarrhoea unrelated to study participation. Participants' primary care physicians and treating nephrologists were notified and patients were followed up with no further concerns. No other adverse events were reported.

DISCUSSION

In this randomised controlled pilot trial, patients with CKD were able to successfully and safely follow being allocated either to a higher or usual oral water intake over a 6-week period. Participants randomised to the hydration group increased their 24 h urine volumes from 2.3 L to 3.0 L/day; in contrast, among controls, 24 h urine volume decreased by 0.2 L/day. There was consistent between-group separation of the 24 h urine volumes in the follow-up. Electrolytes, osmolality and parameters of kidney function remained within the expected ranges for patients with CKD.²⁴ Importantly, the serum sodium was similar between the groups at all comparison points and all values remained above 130 mmol/L. As well, HRQL, social functioning, sleep and appetite quality remained similar between groups. No serious adverse events were observed. We are using these pilot data to inform elements of a larger randomised controlled trial to understand the outcomes of an increased water intake in CKD.

While many observational studies suggest a beneficial effect of increased hydration on the kidney,^{1-4 10} to our

Table 4 Change in clinical variables between prerandomisation and 6-week postrandomisation*

	Prerandomisation		Postrandomisation		Change from baseline†		p Value‡
	Control	Hydration	Control	Hydration	Control	Hydration	
24 h urine volume, L	2.0 (0.7)	2.3 (0.6)	1.7 (0.6)	3.0 (1.2)	-0.2 (0.4)	0.7 (1.0)	0.002
24 h urine creatinine, mmol/day	10.9 (4.3)	13.0 (4.0)	10.2 (3.6)	13.5 (4.7)	-0.8 (1.7)	0.7 (2.3)	0.08
24 h urine sodium, mmol/day	155 (68)	163 (68)	114 (66)	148 (55)	-41 (29)	-15 (41)	0.10
24 h urine potassium, mmol/day	58 (30)	69 (32)	56 (25)	71 (34)	-2.0 (19)	2.3 (15)	0.53
24 h urine urea, mmol/day	344 (136)	388 (136)	304 (116)	407 (116)	-40 (66)	19 (82)	0.07
24 h urine osmolality, mOsm/kg	430 (123)	393 (161)	410 (75)	317 (110)	-19 (97)	-76 (149)	0.27
24 h urine ACR, mg/mmol, median (IQR)	20 (7, 77)	16 (6, 60)	17 (6, 86)	16 (5, 78)	-0.6 (-8, 9.2)	0.9 (-2.7, 21.5)	0.69
Serum sodium, mmol/L	139 (2.7)	138 (2.2)	138 (3.4)	138 (1.8)	-1.5 (2.9)	-0.5 (2.7)	0.37
Serum urea, mmol/L	12 (3)	12 (3)	13 (3)	12 (4)	1.0 (2.6)	0.6 (2.6)	0.69
Serum osmolality, mOsm/kg	305 (10)	302 (6)	305 (10)	302 (7.3)	0.0 (3.7)	0.06 (5.7)	0.98
eGFR, mL/min/1.73 m ²	39 (11)	42 (10)	38 (12)	41 (10)	-1.8 (5)	-0.8 (4.0)	0.61
Cystatin C, mg/L	1.6 (0.5)	1.6 (0.4)	1.6 (0.5)	1.6 (0.5)	0.0 (0.2)	0.0 (0.2)	0.90
Specific gravity (g)	1.01 (0.01)	1.01 (0.01)	1.01 (0.01)	1.01 (0.01)	-0.01 (0.01)	-0.01 (0.01)	0.89

*Means and SDs are reported unless otherwise reported.

†Last follow-up—baseline.

‡Change from baseline compared between groups using the independent t test.

ACR, albumin to creatinine ratio; eGFR, estimated glomerular filtration rate.

knowledge, there are no previous clinical trials of increased water intake in adults with CKD. The clinical trials of increased fluid intake in other patient groups (eg, overweight adults, elderly men and patients with polycystic kidney disease or kidney stones) demonstrate no adverse effects. These studies instructed participants to increase water intake by 1–3 L/day. In particular, Spigt *et al*^{25–27} conducted several studies of healthy elderly men, and showed that an increased fluid intake of 1 L/day, on an average, was safe in terms of serum sodium, eGFR and quality of life (n=142), and can be sustained over a 6-month period. Furthermore, in a subset of 44 elderly men, a 2 L increase in fluid intake for up to 2 months was associated with improvement in lower bladder function.^{25–27} Similar to the Spigt's study,²⁷ the participants in the hydration group experienced a significant increase in nocturia; however, this

was not associated with any measurable changes in HRQL. Although increased water intake is known to be the most effective therapeutic measure to prevent kidney stones, surveys of patients with recurrent kidney stones show poor compliance with prescriptions for increased water intake.²⁸ Wang *et al*²¹ recently reported results of a water prescription study in eight patients with autosomal dominant polycystic kidney disease who were asked to drink 0.4–1.4 L/day of water for 5 days, in addition to usual fluid intake. Three 24 h urine samples were collected in the week preceding the intervention and again during the week of the intervention and participants were able to achieve their targets (mean 24 h urine volume increased by about 0.8 L/day), albeit for a brief period of study. In contrast, our pilot study of patients with CKD (eGFR 30–60 mL/min/1.73 m²) was 6 weeks in duration. The hydration group increased

Table 5 Change in health-related quality of life between prerandomisation and 6-week postrandomisation*

	Prerandomisation		Postrandomisation		Change from baseline†		p Value‡
	Control	Hydration	Control	Hydration	Control	Hydration	
Overall health§	68 (11)	74 (18)	74 (18)	78 (10)	6 (18)	4 (15)	0.78
Affect of physical health on social functioning§	68 (41)	79 (19)	80 (42)	97 (12)	13 (52)	8 (15)	0.83
Sleep quality§	75 (22)	79 (19)	82 (18)	82 (20)	7 (18)	2 (14)	0.46
Appetite quality§	83 (15)	82 (18)	88 (14)	88 (14)	5 (8)	5 (10)	0.94
Urinary frequency							
Daytime (average per day)	7.8 (1.9)	8.4 (3.0)	7.2 (2.2)	9.4 (4.0)	-0.6 (2.0)	1.1 (3.1)	0.14
Night-time (average per day)	2.3 (1.7)	1.8 (0.8)	1.8 (0.7)	2.6 (1.2)	-0.5 (0.5)	0.7 (1.2)	0.01

*Means and SDs are reported unless otherwise reported.

†Last follow-up—baseline.

‡Change from baseline compared between groups using the independent t test.

§Higher scores indicate better functioning (scaled from 0 to 100).

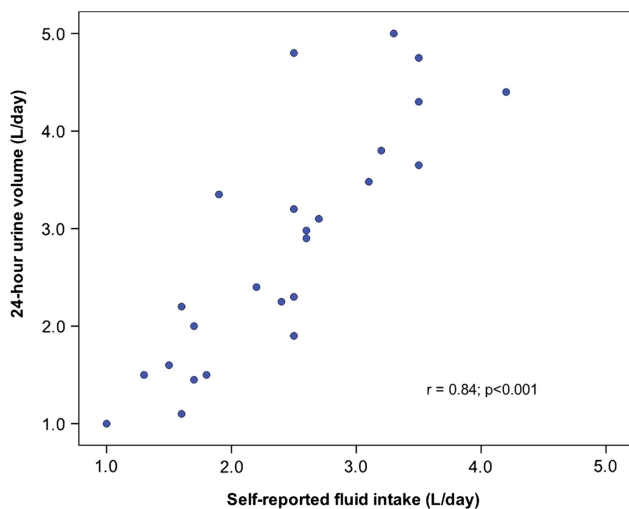


Figure 3 Correlation between 24 h urine volume and self-reported fluid intake 2 weeks after randomisation (r =Pearson's correlation coefficient).

their 24 h urine volume by 0.7 L/day, and the between-group difference at the final follow-up was 1.3 L/day, which we attribute to the coaching skills and frequency of telephone follow-up with participants.^{29–31} Urine osmolality decreased to a greater extent in the hydration group compared with the control group (by 19% vs 5%, respectively); however, this difference was not statistically significant. Although other studies have demonstrated that acute water loading can significantly reduce urine osmolality,^{11 32} these studies evaluated hydration regimens that were much greater (eg, ≥ 3 L/day compared with 1–1.5 L/day in our study).

Our trial has some limitations that merit discussion. Because it was not possible to blind the participants in this pilot trial (nor in the main trial), both groups were fully informed of the main trial's hypothesis/research question: Does increased hydration reduce progression of CKD? To counteract any potential contamination of our control group being informed about the trial's objectives and potential benefit, we coached controls to not increase their hydration beyond normal intake or thirst. One explanation for the high refusal rate in this pilot phase is that the participants were asked to collect a total of three 24 h urine samples: one every 2 weeks. However, despite this onerous task, only one patient withdrew from the study after a flare-up of Crohn's disease. Although neither participants nor assessors were blinded, our primary outcome of change in 24 h urine volume is an objective laboratory measure and therefore less subject to self-report or assessor bias, and 24 h urine creatinine concentrations remained within 10% of baseline values for the hydration and control groups. We acknowledge that a 24 h urine collection may not accurately capture a long-term fluid intake; however, because our primary outcome required participants to collect several 24 h urine collections in a short period of time, we did not wish to increase respondent burden by

requiring a detailed dietary history as well. Nonetheless, we observed a strong ($r=0.84$), statistically significant correlation between self-reported fluid intake from a 3-day diet record and 24 h urine output. As well, despite the small sample size of this pilot trial, the between-group difference in 24 h urine volumes was statistically significant over follow-up.

Our study demonstrates that increased water intake for 6 weeks in patients with CKD is feasible and safe with no negative impact on quality of life; however, with only 18 patients randomised to the hydration regimen, long-term safety and generalisability are less clear. These are inevitable weaknesses of a pilot study, and we will be monitoring these variables closely in our 12-month randomised controlled trial. We will randomise 700 adults with CKD to the hydration regimen described here, or a control group (1:1). In the main trial, three 24 h urine collections will be separated over 12 months. We will measure participants' eGFR every 3 months for 12 months, and compare the rate of renal decline between the intervention and control groups. We anticipate that this novel trial will generate important new knowledge about the effect of water intake on kidney function in patients with CKD.

CONCLUSION

The results of this 6-week pilot study demonstrate that patients with CKD are willing and able to increase water intake by up to 0.7 L/day (in addition to usual consumed beverages, depending on sex and weight) with no safety concerns.

Funding This study was funded by Danone Research and the Programme of Experimental Medicine, Western University, Canada.

Competing interests WFC received speaking honoraria from and a recently initiated randomised controlled trial funded by Danone Research and the Programme of Experimental Medicine, Western University, Canada.

Ethics approval Ethics approval was obtained from the Western University Research Ethics Board for Health Sciences (Board number is 102787) on 16 August 2012 (registered with the US Department of Health and Human Services IRB 00000940). We experienced administrative difficulties with the ClinicalTrials.gov site, which delayed protocol registration until 9 Nov 2012 (NCT 01753466). Although our first patient was consented on 16 Oct, this patient was not randomised until 26 Oct 2012 (after first 24 h urine collection was completed).

Provenance and peer review Not commissioned; externally peer reviewed.

Data sharing statement Technical appendix, statistical code and dataset available from the corresponding author at: William.Clark@lhsc.on.ca

Open Access This is an Open Access article distributed in accordance with the Creative Commons Attribution Non Commercial (CC BY-NC 3.0) license, which permits others to distribute, remix, adapt, build upon this work non-commercially, and license their derivative works on different terms, provided the original work is properly cited and the use is non-commercial. See: <http://creativecommons.org/licenses/by-nc/3.0/>

REFERENCES

1. Clark WF, Sontrop JM, Macnab JJ, *et al.* Urine volume and change in estimated GFR in a community-based cohort study. *Clin J Am Soc Nephrol* 2011;6:2634–41.

2. Strippoli GF, Craig JC, Rochtchina E, *et al.* Fluid and nutrient intake and risk of chronic kidney disease. *Nephrology (Carlton)* 2011;16:326–34.
3. Brooks DR, Ramirez-Rubio O, Amador JJ. CKD in Central America: a hot issue. *Am J Kidney Dis* 2012;59:481–4.
4. Peraza S, Wesseling C, Aragon A, *et al.* Decreased kidney function among agricultural workers in El Salvador. *Am J Kidney Dis* 2012;59:531–40.
5. Bankir L, Bouby N, Trinh-Trang-Tan MM. Vasopressin-dependent kidney hypertrophy: role of urinary concentration in protein-induced hypertrophy and in the progression of chronic renal failure. *Am J Kidney Dis* 1991;17:661–5.
6. Bouby N, Bachmann S, Bichet D, *et al.* Effect of water intake on the progression of chronic renal failure in the 5/6 nephrectomized rat. *Am J Physiol Renal Physiol* 1990;258:F973.
7. Bouby N, Ahloulay M, Nsegbe E, *et al.* Vasopressin increases glomerular filtration rate in conscious rats through its antidiuretic action. *J Am Soc Nephrol* 1996;7:842–51.
8. Sugiura T, Yamauchi A, Kitamura H, *et al.* High water intake ameliorates tubulointerstitial injury in rats with subtotal nephrectomy: possible role of TGF- β [bgr]. *Kidney Int* 1999;55:1800–10.
9. Nagao S, Nishii K, Katsuyama M, *et al.* Increased water intake decreases progression of polycystic kidney disease in the PCK Rat. *J Am Soc Nephrol* 2006;17:2220–7.
10. Sontrop JM, Dixon SN, Garg AX, *et al.* Association between water intake, chronic kidney disease and cardiovascular disease: as cross-sectional analysis of NHANES data. *Am J Nephrol* 2013;37:434–42.
11. Shore AC, Markandu ND, Sagnella GA, *et al.* Endocrine and renal response to water loading and water restriction in normal man. *Clin Sci (Lond)* 1988;75:171–7.
12. Torres VE. Vasopressin in chronic kidney disease: an elephant in the room? *Kidney Int* 2009;76:925–8.
13. Edwards RM, Trizna W, Kinter LB. Renal microvascular effects of vasopressin and vasopressin antagonists. *Am J Physiol* 1989;256:F274–8.
14. Perico N, Zoja C, Coma D, *et al.* V1/V2 vasopressin receptor antagonism potentiates the renoprotection of renin-angiotensin system inhibition in rats with renal mass reduction. *Kidney Int* 2009;76:960–7.
15. Luft FC. Vasopressin, urine concentration and hypertension: a new perspective on an old story. *Clin J Am Soc Nephrol* 2007;2:196–7.
16. Cirillo M. Determinants of kidney dysfunction: is vasopressin a new player in the arena? *Kidney Int* 2010;77:5–6.
17. Khan SQ, Dhillon OS, O'Brien RJ, *et al.* C-Terminal provasopressin (copeptin) as a novel and prognostic marker in acute myocardial infarction. *Circulation* 2007;115:2103–10.
18. Goldsmith SR. Is there a cardiovascular rationale for the use of combined vasopressin V1a/V2 receptor antagonists? *Am J Med* 2006;119:S93–6.
19. Levey AS, Stevens LA, Schmid CH, *et al.* A new equation to estimate glomerular filtration rate. *Ann Intern Med* 2009;150:604–12.
20. Baylis PH, Heath DA. Water disturbances in patients treated with oral lithium carbonate. *Ann Intern Med* 1978;88:607–9.
21. Wang CJ, Creed C, Winklhofer FT, *et al.* Water prescription in autosomal dominant polycystic kidney disease: a pilot study. *Clin J Am Soc Nephrol* 2011;6:192–7.
22. Hays RD, Kallich JD, Mapes DL, *et al.* Development of the kidney disease quality of life (KDQOL TM) instrument. *Qual Life Res* 1994;3:329–38.
23. Hays RD. Rand Corporation. Kidney Disease Quality of Life Short Form (KDQOL-SF TM), Version 1.3: a manual for use and scoring. 1997. Rand.
24. Diem K, Lentner C, eds. *Documenta Geigy Scientific Tables*. 7th edn. Basle, Switzerland: CIBA-GEIGY Ltd, 1973:523, 531–536, 557.
25. Spigt MG, Knottnerus JA, Westerterp KR, *et al.* The effects of 6 months of increased water intake on blood sodium, glomerular filtration rate, blood pressure, and quality of life in elderly (aged 55–75) men. *J Am Geriatr Soc* 2006;54:438–43.
26. Spigt M, van Schayck O, Knipschild P, *et al.* Is it possible to improve elderly male bladder function by having them drink more water? A randomized trial of effects of increased fluid intake/urine output on male lower urinary tract function. *Urology* 2006;68:1031–6.
27. Spigt MG, Knottnerus JA, van de Beek C, *et al.* Short-term effects of increased urine output on male bladder function and lower urinary tract symptoms. *Urology* 2004;64:499–503.
28. Bankir L, Daudon M. Recurrent (as opposed to non-recurrent) stone formers failed to increase urine volume significantly over a 3-y period in spite of recommendations to drink more, and still showed a higher Tiselius index in morning urine. *J Am Soc Nephrol* 2008;19:294A.
29. Eakin E, Reeves M, Lawler S, *et al.* Telephone counseling for physical activity and diet in primary care patients. *Am J Prev Med* 2009;36:142–9.
30. Eakin EG, Lawler SP, Vandelanotte C, *et al.* Telephone interventions for physical activity and dietary behavior change: a systematic review. *Am J Prev Med* 2007;32:419–34.
31. McCauley LR, Dyer AJ, Stern K, *et al.* Factors influencing fluid intake behavior among kidney stone formers. *J Urol* 2012;187:1282–6.
32. Barash I, Ponda MP, Goldfarb DS, *et al.* A pilot clinical study to evaluate changes in urine osmolality and urine cAMP in response to acute and chronic water loading in autosomal dominant polycystic kidney disease. *Clin J Am Soc Nephrol* 2010;5:693–7.