


ORIGINAL ARTICLE

Identification of a new *Cordyceps javanica* fungus isolate and its toxicity evaluation against Asian citrus psyllid

Da Ou¹ | Li-He Zhang¹ | Chang-Fei Guo¹ | Xiao-Sheng Chen² | Shaukat Ali^{1,3} | Bao-Li Qiu^{1,3} 

¹Key Laboratory of Bio-Pesticide Innovation and Application, South China Agricultural University, Guangzhou, China

²College of Forestry and Landscape Architecture, South China Agricultural University, Guangzhou, China

³Engineering Research Center of Biological Control, Ministry of Education, Guangzhou, China

Correspondence

Bao-Li Qiu, Department of Entomology, South China Agricultural University, Guangzhou, China.
Email: baileyqiu@scau.edu.cn

Funding information

the Guangdong Science and Technology Innovation Leading Talent Program, Grant/Award Number: 2016TX03N273; the Guangdong Province Universities and Colleges Pearl River Scholar Funded Scheme, Grant/Award Number: 2014-19; the National Key Research and Development Programme of China, Grant/Award Number: 2017YFD0200400; Science and Technology Programme of Guangzhou, P.R. China, Grant/Award Number: 201807010019

Abstract

The Asian citrus psyllid, *Diaphorina citri* Kuwayama, is the most serious pest of citrus worldwide. It acts as a vector for a group of phloem-limited bacteria (*Candidatus Liberibacter* spp.) that causes Huanglongbing (HLB) disease. Thus, *D. citri* management is an important strategy against HLB, and biological control is currently considered as the most effective method because of the unsustainable and negative side effects of chemical control. Here, we isolated a new strain of entomopathogenic fungus, *Cordyceps javanica* (GZQ-1), from one cadaver of *D. citri* adult based on its morphological and phylogenetic data. Five conidial concentrations of the *C. javanica* pathogen (1×10^3 , 1×10^4 , 1×10^5 , 1×10^6 , and 1×10^7 conidia/ml) were assessed against six life stages of *D. citri* (1st-5th instar nymphs and adults). Results showed that *C. javanica* GZQ-1 was highly pathogenic to *D. citri* nymphs (69.49%–90.87% mortality) and adults (69.98% mortality). The LC_{50} and LT_{50} values of *C. javanica* against 1st-2nd instar (younger), 3rd-4th instar (middle aged), 5th instar (older), and adults were 1.20×10^5 , 1.10×10^6 , 4.47×10^6 , 8.12×10^6 conidia/ml and 4.25, 4.51, 5.17, 5.49 days, respectively. Moreover, glasshouse experiments indicated that this *C. javanica* GZQ-1 caused higher infection rates of *D. citri* adults compared to two other fungal strains we previously isolated in the laboratory, *Cordyceps fumosorosea* (IF010) and *Metarhizium anisopliae* (CNGD7).

KEYWORDS

Asian citrus psyllid, biological control, *Cordyceps javanica*, entomopathogenic fungi, isolation

1 | INTRODUCTION

The Asian citrus psyllid, *Diaphorina citri* Kuwayama (Hemiptera: Liviidae), is one of the most economically important pests of citrus worldwide. It serves as a vector of phloem-limited bacteria (*Candidatus Liberibacter* spp.), which can cause Huanglongbing (HLB; citrus greening disease), a devastating disease of citrus (Bové, 2006; Lin, 1956). Thus, population management of *D. citri* is a basic

and most important strategy in blocking the spread of HLB disease. Intensive chemical control of *D. citri* is the primary strategy currently advocated for HLB management. However, this strategy is pernicious and unsustainable with several negative side effects such as chemical residues, resistance, and pest resurgence being noted (Tansey, Vanaclocha, Monzo, Jones, & Stansly, 2017).

In view of the undesirable side effects of pesticides, biological control has become an advantageous development direction for

This is an open access article under the terms of the Creative Commons Attribution License, which permits use, distribution and reproduction in any medium, provided the original work is properly cited.

© 2018 The Authors. *MicrobiologyOpen* published by John Wiley & Sons Ltd.

the prevention and control of agricultural pests. Within this area, entomopathogenic fungi play a particularly important role. In addition to efficacy and cost, there are several advantages of using entomopathogenic fungi: they have broad-spectrum insecticidal activity, diversified species range, complex metabolic types, and offer appropriate safety levels for humans and other non-target organisms (Lacey, Frutos, Kaya, & Vail, 2001). They are also easy to mass-produce and development of host resistance against them is unlikely to occur. They also infect their insect hosts in a unique way entering the hemocoel cavity through the external cuticle, where they absorb nutrients, produce immunosuppressive toxins (Vilcinskas & Götz, 1999), damage the host cells, and interact with the gut microbiota to promote host death. They finally kill the host, and the given fungus grows out the cuticle of the dead insect releasing conidiophores to infect other host individuals (Wang & Wang, 2017; Wei et al., 2017; Xiong et al., 2013). All this promotes their good application potential within invertebrate pest control strategies.

Different natural enemies of *D. citri* including parasitoids, predators, and entomopathogenic fungi have been reported and applied in practice to manage this pest. Among the parasitoids, *Tamarixia radiate* (Waterston) and *Diaphorencyrtus aligarhensis* (Shafee, Alam and Argarwal) have been utilized to control *D. citri* population in Mauritius, Reunion Island, and the United States (Chen & Stansly, 2014; Chen, Triana, & Stansly, 2017). The predatory natural enemies of *D. citri* investigated includes ladybirds, predatory mites, lacewings, spiders, ants, and preying mantis (Juan-Blasco, Qureshi, Urbaneja, & Stansly, 2012; Michaud, Olsen, & Olsen, 2004; Navarrete, Mcauslane, Deyrup, & Peña, 2013).

Entomopathogenic fungi account for more than 60% of insect pathogenic microorganisms. The utilization of entomopathogenic fungi to control *D. citri* offers a great development opportunity on account of their significant epidemic potential and the convenience of production. Lezama-Gutiérrez et al. (2012) determined the virulence of three entomopathogenic fungi against *D. citri* in the field and found 42%, 50%, and 22% mortality of *D. citri* adults when they infected with *Beauveria bassiana*, *Metarhizium anisopliae*, and *Cordyceps fumosorosea* (Wize) Kepler, B. Shrestha & Spatafora, comb. nov. (MycoBank MB820980), formerly *Isaria fumosorosea*, respectively. Ibarra-Cortes et al. (2018) ascertained the fatality rate of *C. fumosorosea*, *B. bassiana*, and *M. anisopliae* to be 28%, 55%, and 43%, respectively, to *D. citri* adults, and 47%, 69%, and 100%, respectively, to the nymphs when applying 1×10^7 conidia/ml suspensions of the individual fungi under laboratory conditions.

In the present study, a new strain of entomopathogenic fungus, *Cordyceps javanica* (Friederichs & Bally), formerly *Isaria javanica* (Friederichs & Bally; Kepler et al., 2017), isolated from an adult cadaver of *D. citri* was identified through morphological as well as phylogenetic data. The pathogenicity of this newly isolated strain to *D. citri* was analyzed through bioassays against different developmental stages.

2 | MATERIALS AND METHODS

2.1 | Psyllid cadaver collection and fungus isolation

A new fresh entomopathogenic fungal strain was isolated from an adult *D. citri* cadaver collected from a glasshouse at South China Agricultural University (SCAU) in Guangzhou, China. The carcass was infiltrated in water containing 5% Tween-80 and shaken vigorously to re-suspend the fungal spores or the mycelium fragments present on the cuticle surface. Then 10 μ l of this suspension was plated on standard PDA medium. After 1–2 days of incubation at 27°C, individual germinations (or mycelium regeneration) were transferred to a new plate. Thereafter, this isolate was submitted to several rounds of purification in order to follow morphological stability after the successive transfers. This purified strain was named as “GZQ-1,” and deposited in Guangdong Microbial Culture Collection Center (GDMCC) with the deposition number GDMCC 60437.

Before morphological observation, this GZQ-1 isolate was firstly cultivated on SDAY/4 medium (SDAY/4:10 g/L dextrose, 2.5 g/L peptone, 2.5 g/L yeast extract, and 15 g/L agar) in Petri dishes placed within a biochemical incubator ($26 \pm 1^\circ\text{C}$, 60% RH, L:D = 14:10). Fungal conidia were then harvested from plates after 5 days, suspended in 0.05% Tween 80 (v/v) and shaken on a vortex mixer for 10 min. The conidial suspension was then filtered, counted and adjusted to the target concentration for pathogenicity tests. The infected nymphs and adults of *D. citri* were observed and recorded under a binocular microscope (ZEISS, Discovery.V20, Germany), and preliminary morphology was identified based on phenotypic properties and pathogenic fungi morphology (Jaber, Mercier, Knio, Brun, & Kambris, 2016).

2.2 | Morphological observation

For the morphometric evaluation of the GZQ-1 isolate, its micro-cultures were first grown on SDAY/4 and incubated at 27°C for 10 days. Slides were then prepared with lactophenol/blue cotton (10:1) and examined with phase contrast optics under an optical microscope Olympus BX51 (Microscopy GmbH, Gottingen, Germany). Images of the conidia were photographed digitally with an Axio Cam HRc camera (Carl Zeiss) using the Axion Vision SE64 Release 4.9.1 software.

To measure the growth rate and conidia yield of GZQ-1, the fungi were cultured on SDAY/4 at 27°C for 10 days, and then the conidia were scraped from the plates and suspended in 10 ml of sterile water. Following this, the suspension was filtered through Miracloth held in a funnel and quantified using a hemocytometer. The growth rate of GZQ-1 hypha was measured based on their morphology on SDAY/4 medium plate on day 10 of culturing. Both the examinations were repeated three times.

2.3 | DNA extraction and ITS sequencing of the GZQ-1 isolate

Total DNA of the GZQ-1 isolate was isolated from each sample of the test strains using a fungal DNA kit following the

TABLE 1 The reference entomopathogenic fungi from GenBank used in phylogenetic analysis. (“*” is the GenBank accession number of GZQ-1; “N/A” unlabeled in NCBI)

Species	GenBank number	Strain no.	Host	Location
<i>Cordyceps javanica</i>	MG742216*	GZQ-1	<i>Diaphorina citri</i>	Guangzhou, China
<i>Cordyceps javanica</i>	AY624186	Ex-type CBS 134.22	<i>Hypothenemus hampei</i>	Java
<i>Cordyceps javanica</i>	MG837718	ACP	<i>Diaphorina citri</i>	Fuzhou, China
<i>Cordyceps javanica</i>	KM234218	CHE-CNRCB 307/7	<i>Bemisia tabaci</i>	Armeria, Mexico
<i>Cordyceps javanica</i>	KM234213	CHE-CNRCB 303/2	<i>Bemisia tabaci</i>	Armeria, Mexico
<i>Cordyceps javanica</i>	KM234212	CHE-CNRCB 303	<i>Bemisia tabaci</i>	Armeria, Mexico
<i>Cordyceps javanica</i>	KT225592	CHE-CNRCB 310	<i>Spodoptera littoralis</i>	France
<i>Cordyceps fumosorosea</i>	AY624182	CBS 244.31	Butter	Ireland
<i>Cordyceps fumosorosea</i>	AY624183	CBS 375.70	Food	Japan
<i>Cordyceps fumosorosea</i>	AY624184	Ex-type CBS 107.10	N/A	France
<i>Beauveria bassiana</i>	KX093961	YT-11	<i>Bombyx mori</i>	Shandong, China
<i>Beauveria bassiana</i>	KF772868	GA-1	<i>Micromelalopha troglodyta</i>	Hubei, China
<i>Beauveria bassiana</i>	KF772861	YD-1	<i>Dendroctonus punctatus</i>	Hubei, China
<i>Beauveria brongniartii</i>	HQ380853	ART376	<i>Melolontha melolontha</i>	Innertkirchen, Switzerland
<i>Beauveria brongniartii</i>	JX110381	SASR HHB32B	<i>Galleria mellonella</i>	South Africa
<i>Beauveria brongniartii</i>	JF947191	ARSEF8153	<i>Agrilus planipennis</i>	Ontario, Canada
<i>Metarhizium anisopliae</i>	JN377427	ZJ	<i>Rhynchophorus ferrugineus</i>	Hainan, China
<i>Metarhizium anisopliae</i>	KX380792	YD2-1-8	Soil	Nanchang, China

standard manufacturer's instructions (Fungal DNA Kit; Sangon Biotech, Shanghai, China). Purified DNA specimens were amplified with universal primers, ITS4: 5'-TCCTCCGCTTATTGATATGC-3', and ITS5: 5'-GGAAGTAAAAGTCGTAACAAGG-3'. Each PCR was carried out in 25 µl volumes, containing 12.5 µl 2 × HiFiTaq PCR StarMix buffer (GenStar, China), 1 µl of each primer, 1 µl of total DNA (53.1 ng/µl), and 9.5 µl of ddH₂O. The reaction was then performed using the following reaction cycles: initial denaturation at 94°C for 3 min, followed by 35 cycles of denaturation at 94°C for 30 s, annealing at 55°C for 30 s and extension at 72°C for 45 s, then a final extension phase at 72°C for 10 min. PCR products were visualized by 1.0% agarose gel electrophoresis, stained with Gold View in 0.5 × TBE buffer (Sangon, Shanghai, China) and photographed under UV light. Following this the target PCR products were sent to The Beijing Genomics Institute (BGI; Shenzhen, China) for complete bidirectional sequencing with PCR primers.

The resulting sequences were checked and aligned using Lasergene v7.1 (DNASTAR, Inc., Madison, WI). Then the similarity of sequences compared with homologous sequences deposited in GenBank (Table 1) was calculated using “BLAST” tools on the National Center for Biotechnology Information (NCBI) website, and a resulting phylogenetic tree constructed using MEGA 6 software (Felsenstein, 1985; Saitou & Nei, 1987). *C. javanica* strain CBS 134.22 and *C. fumosorosea* strain CBS 107.10 were used as the Ex-type strains. *Metarhizium anisopliae* strains ZJ and YD2-1-8 were used as the out group in the phylogeny analysis.

Phylogenetic hypotheses were analyzed independently for ITS with Maximum Likelihood (ML) using MEGA 6 software based on the

Tamura-Nei model for ITS, and a discrete gamma distribution was applied for each analysis with 1,000 bootstrap replicates (ML BS). The resulting trees are visualized in Figure 4.

2.4 | Plants and insects in testing

Murraya paniculata (L) Jacks plants were used in this study. New seedling plants were cultured in 30-cm-diameter plastic pots containing a soil-sand mixture (10% sand, 5% clay, and 85% peat) in a glasshouse at ambient temperature and photoperiod.

The colony of *D. citri* was first collected from *M. paniculata* plants at SCAU and then continuously reared on *M. paniculata* seedlings in a glasshouse onsite at SCAU at 26–28°C and 60%–65% relative humidity under a 14:10 hr (L:D) photoperiod. New plants with fresh shoots were provided for the *D. citri* culture once a month. For bioassay analysis, six life stages of *D. citri* were used: 1st–5th nymphal instars and mature adults. Nymphs were collected into Petri dishes using a fine camel hairbrush, and following morphological examination under a stereomicroscope, were classified into their individual nymphal stages based on morphological features.

2.5 | Pathogenicity testing of the GZQ-1 isolate

2.5.1 | Laboratory bioassays

Experiments were performed in an artificial climate incubator (26 ± 1°C, 90% RH and photoperiod 14:10 hr (L:D)). Conidial suspensions of GZQ-1 were diluted with sterile distilled water to five

concentrations (1×10^3 , 1×10^4 , 1×10^5 , 1×10^6 , and 1×10^7 conidia/ml). The LC_{50} values and LT_{50} values of this GZQ-1 isolate on *D. citri* younger nymphs (1st–2nd instar), middle and older nymphs (3rd–5th instar), and adults (3 days after emergence) were measured. Double sterile water was used as a negative control. Different instars of *D. citri* were sprayed with each concentration of conidial suspension as well as the ddH₂O control (till the leaf surface was covered with beads of solution). Approximately 30–40 individuals of different instar *D. citri* nymphs or adults were examined in each bioassay, with each assay being replicated three times.

2.5.2 | Glasshouse bioassays

The glasshouse bioassay of GZQ-1 isolate to *D. citri* adults (3 days following emergence) were carried out in the autumn of 2017 at SCAU (average temperature 24–30°C, 50%–60% RH). *C. fumosorosea* (IFO10) and *M. anisopliae* (CNGD7), which we have isolated in SCAU (Dai et al., 2017; Freed, Jin, & Ren, 2011) were also tested as positive controls. The conidial suspensions of these fungi (including GZQ-1) were diluted with sterile distilled water to 1×10^7 conidia/ml. Approximately 30–40 insects were sprayed with the individual conidial suspensions or ddH₂O as control in each bioassay, with each assay replicated three times.

The infected *D. citri* by the three entomopathogenic fungi were observed daily, and the dead individuals were removed and underwent further incubation to promote fungal growth. The average mortalities of *D. citri* caused by the tested fungi were calculated. The mathematical calculation of lethal concentrations LC_{50} and

confidence limits were carried out by the method of probit analysis (Zhang et al., 2018).

3 | RESULTS

3.1 | Morphological identification of GZQ-1 isolate

The morphological features of GZQ-1 isolate are illustrated in Figure 1. The fungal colonies had a concentric ring pattern. Mycelium texture was velvet like. The center of the colony was pale pink while spores on the edge of the colony were white in color with radial growth (Figure 1a). The mature colony was brownish gray (Figure 1b). The conidiophores were straight with a long ovoid conidial shape linked into a chain, and the phialides were characterized by a wide globose basal portion with a long distal neck (Figure 1c,d). The morphological identification and infection observation revealed that GZQ-1 isolate was *Cordyceps javanica*.

When *D. citri* nymphs and adults were infected by the GZQ-1 isolate in the glasshouse, the insects were observed to move slowly and suffer twitching of legs and antennae after 48 hr infection. Infected adult *D. citri* scratched actively, clung tightly to branches and leaves until they were completely covered with hyphae and finally died. Microscopic observation showed that fungal hyphae emerging from the tarsi and intersegmental regions of the legs of infected *D. citri* after 48–72 hr had grown from the metamere and intersegmental membranes. Then covering the whole of the *D. citri* including the wings, it caused death after seven days or longer (Figures 2 and 3).

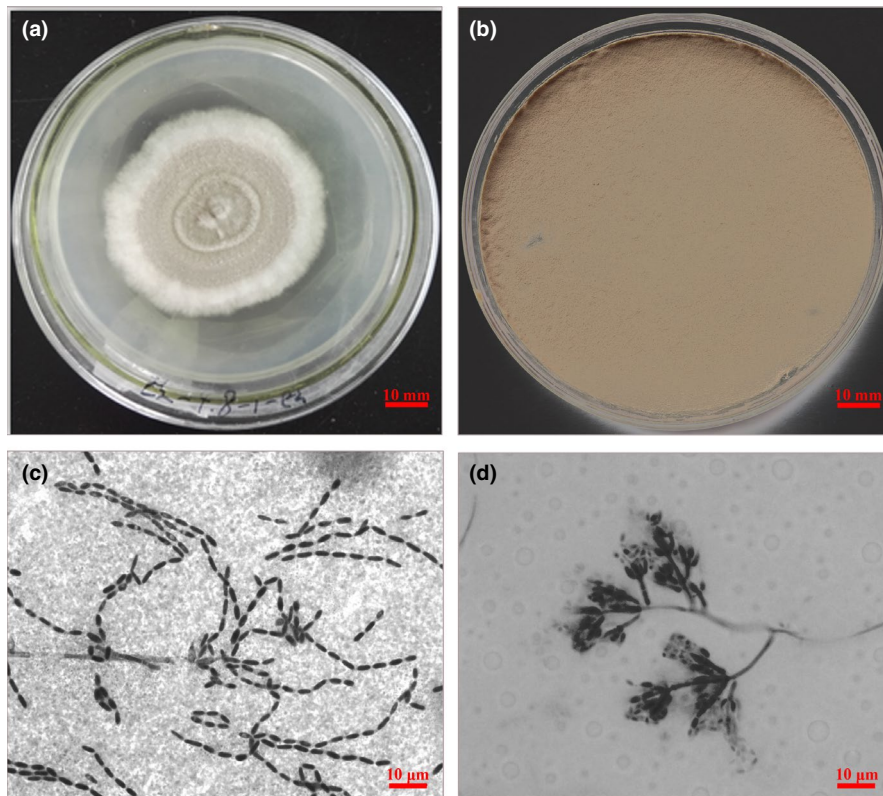


FIGURE 1 The morphology of *Cordyceps javanica* GZQ-1 isolate on SDAY/4. (a) The upper side of *C. javanica* colony on SDAY/4 on 4th day; (b) The upper side of *C. javanica* mature colony on SDAY/4 on 14th day; (c) *C. javanica* GZQ-1: chains of conidia. (d) *C. javanica* GZQ-1: Phialides with developing conidia

3.2 | Sequencing of the ITS genes and phylogenetic analysis

Polymerase chain reaction amplification and DNA sequencing results indicated that the rDNA-ITS gene of GZQ-1 isolate was 616 bp (data not shown), following this the DNA sequence was submitted to GenBank; where it gain the GenBank accession number of MG742216. BLAST results in GenBank revealed that the ITS gene of GZQ-1 was 100% homologous to the *C. javanica* strain (GenBank accession number MG837718). Moreover, phylogenetic analysis showed that GZQ-1 isolate was closely clustered in the *C. javanica* clade (Figure 4), which supported our morphological identification that the GZQ-1 isolate is a *C. javanica* strain.

3.3 | Pathogenicity testing of the GZQ-1 isolate

3.3.1 | Laboratory bioassays

After 10 days of incubation, the diameter of *C. javanica* colony reached 42.3 ± 1.86 mm and sporulation was 2.26×10^8 spores/g on SDAY/4 medium. The bioassay results showed that GZQ-1 isolate has high pathogenicity to both the nymphs and adults of *D. citri*, with corrected mortality rates of $91.7\% \pm 2.36\%$, $88.3\% \pm 4.33\%$, $73.3\% \pm 3.32\%$, and $72.2\% \pm 2.94\%$ to the 1st–2nd instar, 3rd–4th instar, 5th instar nymphs, and adults of ACP following the 7th day of infection, respectively (Figure 5); there were significant differences among the mortality rates of 1st–2nd instar nymphs, 3rd–4th instar nymphs, 5th instar nymphs, and adult *D. citri* ($p < 0.05$).

Bioassay results showed that the LC₅₀ values for *C. javanica* GZQ-1 isolate acting on the different developmental stages of *D. citri* after 7 days were 5.19×10^5 , 1.27×10^6 , 4.47×10^6 , and 8.12×10^6 conidia/ml, respectively (Table 2). While the LT₅₀ values of GZQ-1 isolate on different developmental stages of *D. citri*

were 4.25, 4.51, 5.17, and 5.49 days, respectively (Table 3). Lethal concentration and death time increased with an increase in developmental stage of *D. citri* when sprayed with the same concentration of *C. javanica* GZQ-1. This demonstrated that our *C. javanica* GZQ-1 isolate was most effective against younger instar nymphs of *D. citri*.

3.3.2 | Glasshouse bioassays

The semi-field pathogenicity of GZQ-1 isolate to *D. citri* was compared with two other excellent entomopathogenic fungi, which have been screened under laboratory conditions: *C. fumosorosea* and *M. anisopliae* at 1×10^7 conidia/ml. Results showed that, when infected with *C. javanica* GZQ-1 isolate, the survival rates of *D. citri* adults was 82.6% on the 3rd day, reducing to 35.7% on the 9th day and finally 18.3% on the 11th day. When infected with *C. fumosorosea* and *M. anisopliae*, their survival rates were 90.0% and 100% on the 3rd day, reducing to 60.0% and 66.7% on the 9th day and finally 22.3% and 20.0% on the 11th day, respectively. In contrast, only 7.7% mortality was recorded in the non-infected controls on the 9th day (Figure 6). Results revealed that the infection and pathogenicity of *C. javanica* isolate to *D. citri* in semi-field conditions was faster or higher than the two other fungal strains we previously isolated in the laboratory (*C. fumosorosea* (IF010) and *M. anisopliae* (CNGD7)) after 7 days of infection in the current study.

4 | DISCUSSION

Numerous insect pathogenic fungi including *Paecilomyces varioti*, *C. fumosorosea*, *C. javanica*, *Beauveria bassiana*, *M. anisopliae*, *Hirsutiella citrifomis*, *Acrostalagmus aphidium*, *Fusarium culmorum*, *Lecanicillium lecanii*, *Cladosporium oxysporum*, *Capnodium citri*, and *Stemphylium* sp.

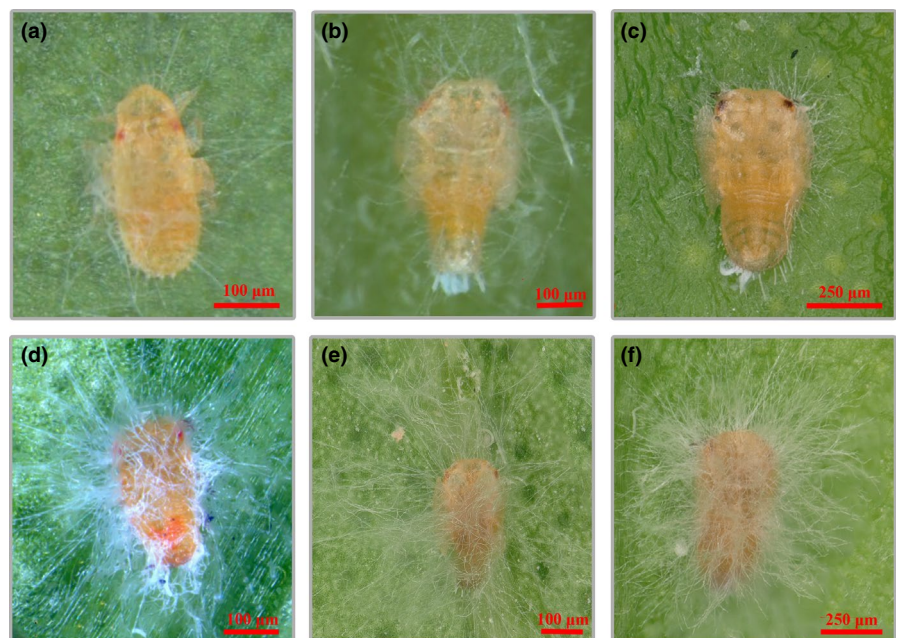


FIGURE 2 The infection phenotype of *Diaphorina citri* nymphs treated with *Cordyceps javanica* (1×10^7 conidia/ml). Panels a, b, and c were the 1st, 2nd, and 3rd nymphs of *D. citri* on 2nd day after infection while panels d, e, and f were the 1st, 2nd, and 3rd nymphs on the 7th day after infection

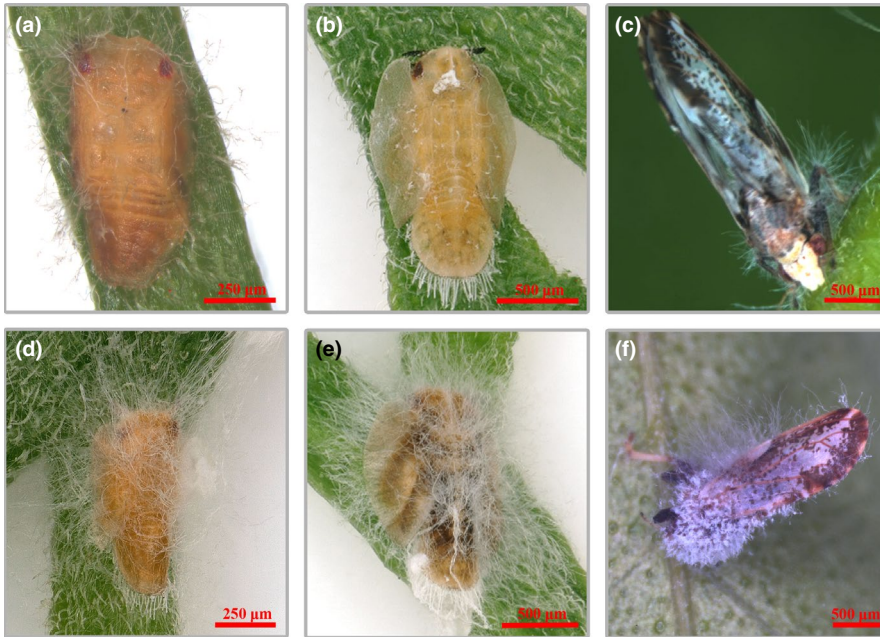


FIGURE 3 The infection phenotype of *Diaphorina citri* older nymphs and adults treated with *Cordyceps javanica* (1×10^7 conidia/ml). Panels a, b, and c were the 4th and 5th nymphs and mature adults of *D. citri* on 2nd day after infection while panels d, e, and f were the 4th and 5th nymphs and mature adults on the 7th day after infection

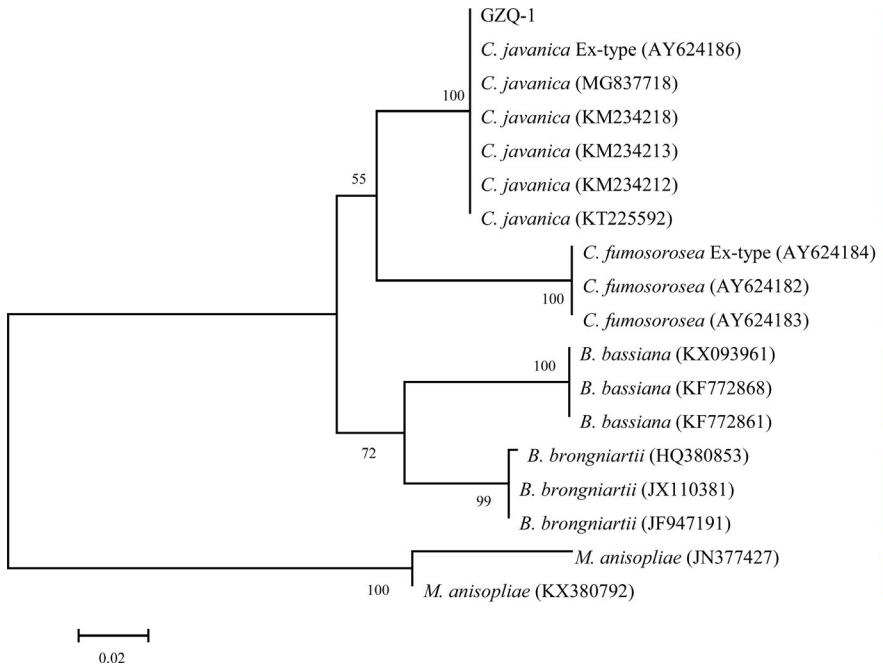


FIGURE 4 Majority rule consensus phylogram from the Bayesian analysis based on the sequences of the internal transcribed spacer (ITS) region for 18 isolates (GZQ-1 isolate, *Cordyceps javanica*, *Cordyceps fumosorosea*, *Beauveria brongniartii*, *Beauveria bassiana*. *Metarhizium anisopliae* was used as the outgroup). Support values are shown for ML BS. The bars in different color show the different fungal species but different strains clustered into one branch in the phylogenetic tree

have been reported to control different insect pests, but only a few studies have reported the pathogenicity of *C. javanica* against *D. citri* (Faria & Wraight, 2007; Gandarilla-Pacheco, Galán-Wong, López-Arroyo, Rodríguez-Guerra, & Quintero-zapata, 2013; Medina-Córdova,

Rosales-Mendoza, Hernández-Montiel, & Angulo, 2018; Meyer, Hoy, & Boucias, 2008; Vega et al., 2008). Nguyen et al. (2017) isolated two highly virulent strains of *C. javanica* against diamondback moth *Plutella xylostella* with respective LT_{50} values of 2.52 and 2.55 days.

Insect stages	Regression virulence model	$LC_{50\%}$ and 95% CI (conidia/ml)	R^2
1st–2nd instar nymph	$Y = 0.129X - 0.085$	$5.19 (-13.2 \sim 19.55) \times 10^5$	0.634
3rd–4th instar nymph	$Y = 0.132X - 0.164$	$1.27 (-1.02 \sim 3.07) \times 10^6$	0.724
5th instar nymph	$Y = 0.145X - 0.44$	$4.47 (1.98 \sim 9.35) \times 10^6$	0.947
Adult	$Y = 0.436X - 2.07$	$8.12 (1.81 \sim 2.62) \times 10^6$	0.961

TABLE 2 Pathogenicity regression equations for LC_{50} values of *Cordyceps javanica* against different developmental stages of *Diaphorina citri* after 7 days of infection (1×10^7 conidia/ml)

TABLE 3 Pathogenicity regression equations for LT_{50} values of *Cordyceps javanica* against different developmental stages of *Diaphorina citri* after 7 days of infection (1×10^7 conidia/ml)

Insect stages	Regression virulence model	LT_{50} and 95% CI (d)	R^2
1st–2nd instar nymph	$Y = 0.549X - 2.335$	4.25 (3.87 ~ 4.64)	0.950
3rd–4th instar nymph	$Y = 0.466X - 2.101$	4.51 (4.08 ~ 4.96)	0.976
5th instar nymph	$Y = 0.449X - 2.322$	5.17 (4.73 ~ 5.70)	0.981
Adult	$Y = 0.486X - 2.668$	5.49 (5.09 ~ 5.96)	0.943

Based on the complete morphological and molecular characteristics described for *Isaria*, Cabanillas, Leon, Humber, Murray, and Jones (2013) correctly identified *C. javanica* from the erroneous differentiated *I. poprawskii*, which was collected from a cadaver of the sweet potato whitefly, *Bemisia tabaci* biotype B in the Lower Rio Grande Valley of Texas, USA. Following this, Mellin-Rosas, Sanchez-Gonzalez, Cruz-Avalos, Montesinos-Matias, and Arredondo-Bernal (2016) reported that their *C. javanica* CHE-CNRCB 303 isolate can cause 95% mortality of both *D. citri* nymphs and adults. In the current study, the *C. javanica* GZQ-1 isolate is very similar to the *C. javanica* fungi descriptions published in regards to morphological features and phenotype of colony (Gallou et al., 2016); its conidial characteristic is also consistent to the findings of Gallou et al. (2016). Moreover, the growth speed and sporulation quantity of our *C. javanica* GZQ-1 colony was faster than that reported by Yin, Qiong-Bo, Guo-Hua, and Mei-Ying (2010) and Shimazu and Takatsuka (2010).

In terms of the pathogenicity bioassays, the LC_{50} and LT_{50} values of *C. javanica* GZQ-1 isolate showed good biological control

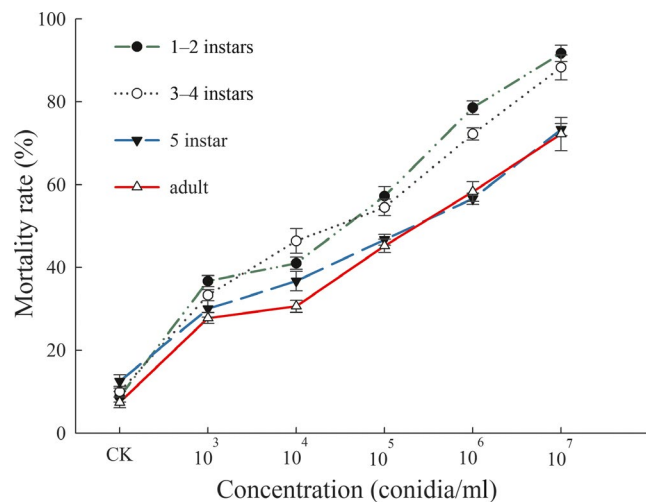


FIGURE 5 The mortality of *Diaphorina citri* different developmental stages treated with various concentrations of *Cordyceps javanica* (1×10^3 , 10^4 , 10^5 , 10^6 , and 10^7 conidia/ml). Data are mean \pm SEM of three tests

potential for *D. citri* management. Pinto, Filho, Almeida, and Wenzel (2012) reported the pathogenicity of *B. bassiana* (IBCB 66) to *D. citri* nymphs: the LC_{50} and LC_{90} values on the 10th day of application were 0.4×10^6 and 6.7×10^6 conidia/ml, respectively. Hoy, Singh, and Rogers (2010) determined the pathogenicity of *C. fumosorosea* (AsCP) to *D. citri* adults, here the LT_{50} value was 4.625 days at spore concentrations of 1×10^7 conidia/ml and the LC_{50} value was 6.8×10^7 conidia/ml after 8 days of fungal application. Our results indicated that our *C. javanica* GZQ-1 isolate was similar too or even better than these high quality strains concerning their pathogenicity to *D. citri*.

Under semi-field conditions, Dai et al. (2017) observed 62% and 65% mortality of *D. citri* when treated with 1×10^7 conidia/ml of *B. bassiana* (Bb-E) and *C. fumosorosea* (IF-B) after 7 days of infection, respectively. Lezama-Gutiérrez et al. (2012) determined that the fatality rate of *C. fumosorosea*, *B. bassiana*, *M. anisopliae* to *D. citri* adults were 22%, 42%, and 50%, respectively, in the field. Compared to these studies and our current findings, the different pathogenicity rates of these fungi may be due to strain distinctions, different biotic, abiotic conditions, including host species, humidity, temperature, and soil type in the various studies (Bugeme, Maniania, Knapp, & Boga, 2008; Erler & Ates, 2015; Inyang, McCartney, & Oyejola, 2000; Kim, Oh, Yoon, & Sung, 2017; Sharififard, Mossadegh, & Vazirianzadeh, 2012).

In conclusion, the efficacious strategy against Huanglongbing disease by suppressing *D. citri* populations has been required to affiliate a multi-tactic integrated pest management (IPM) programme (Meyer et al., 2008; Weintraub & Beanland, 2006). In the current study, we identified a high pathogenic *C. javanica* GZQ-1 isolate based on its morphology and phylogeny and estimated its potential use in Asian citrus psyllid biological control. Our study is expected to enrich the available resource library of entomopathogenic fungi and provide an alternative preparation for inclusion within *D. citri* IPM strategies.

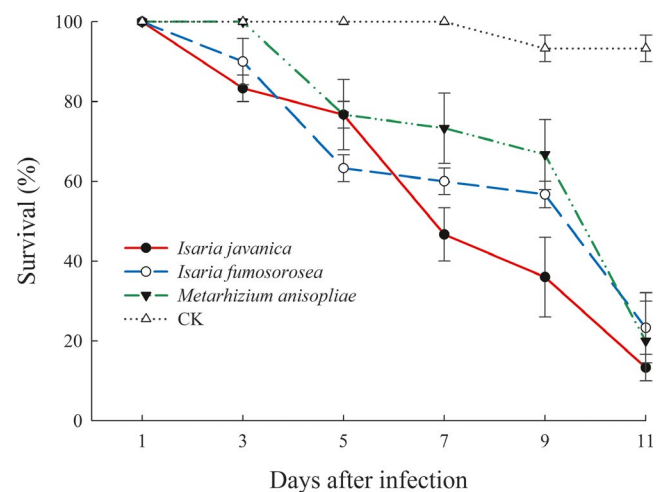


FIGURE 6 The survival rates of *Diaphorina citri* adults when infected with *Cordyceps javanica* GZQ-1 isolate as well as *Cordyceps fumosorosea* and *Metarhizium anisopliae* (all are 1×10^7 conidia/ml) under glasshouse conditions. Data are mean \pm SEM of three tests

ACKNOWLEDGMENTS

We thank Dr. Andrew G S Cuthbertson (Defra, UK) for his critical comments on an early draft of the manuscript. The work was supported by the National Key Research and Development Programme of China (2017YFD0200400), the Guangdong Science and Technology Innovation Leading Talent Program (2016TX03N273), the International Cooperation Project of Guangzhou Science and Technology Innovation Committee (201604030029, 201807010019); and the Guangdong Province Universities and Colleges Pearl River Scholar Funded Scheme (2014-19) to BLQ. The funders had no role in the study design, data collection and interpretation, or the decision to submit the work for publication.

CONFLICT OF INTEREST

The authors declare no conflict of interest.

AUTHORS CONTRIBUTION

DO and BLQ designed the study. DO, LHZ, and CFG performed the experiments and analyzed the data. XSC and SA participated in data analysis and photography. DO, BLQ, and SA wrote the paper. BLQ supported the grants.

ETHICS STATEMENT

None required.

DATA ACCESSIBILITY

All DNA sequences are submitted to GenBank with Accession number MG742216. All data generated or analyzed during this study are included in this published article.

ORCID

Bao-Li Qiu  <http://orcid.org/0000-0002-0735-013X>

REFERENCES

- Bové, J. M. (2006). Huanglongbing: A destructive, newly-emerging, century-old disease of citrus. *Journal of Plant Pathology*, *88*, 7–37.
- Bugeme, D. M., Maniania, N. K., Knapp, M., & Boga, H. I. (2008). Effect of temperature on virulence of *Beauveria bassiana* and *Metarhizium anisopliae* isolates to *Tetranychus evansi*. *Experimental and Applied Acarology*, *46*, 275–285. <https://doi.org/10.1007/s10493-008-9179-1>
- Cabanillas, H. E., de Leon, J. H., Humber, R. A., Murray, K. D., & Jones, W. A. (2013). *Isaria poprawskii* sp nov (Hypocreales: Cordycipitaceae), a new entomopathogenic fungus from Texas affecting sweet potato whitefly. *Mycoscience*, *54*, 158–169. <https://doi.org/10.1016/j.myc.2012.09.009>
- Chen, X., & Stansly, P. A. (2014). Biology of *Tamarixia radiata* (Hymenoptera: Eulophidae), parasitoid of the citrus greening disease vector *Diaphorina citri* (Hemiptera: Psylloidea): A mini review. *Florida Entomologist*, *97*, 1404–1413.
- Chen, X., Triana, M., & Stansly, P. A. (2017). Optimizing production of *Tamarixia radiata* (Hymenoptera: Eulophidae), a parasitoid of the citrus greening disease vector *Diaphorina citri* (Hemiptera: Psylloidea). *Biological Control*, *105*, 13–18. <https://doi.org/10.1016/j.biocontrol.2016.10.010>
- Dai, X. Y., Li, Y. Y., Shen, Z. L., Xu, W. M., Wu, J. H., Ren, S. X., & Qiu, B. L. (2017). The biocontrol effects of *Beauveria bassiana* and *Isaria fumosorosea* on Asian citrus psyllid. *Journal of South China Agricultural University*, *38*, 63–68.
- Erler, F., & Ates, A. O. (2015). Potential of two entomopathogenic fungi, *Beauveria bassiana* and *Metarhizium anisopliae* (Coleoptera: Scarabaeidae), as biological control agents against the June beetle. *Journal of Insect Science*, *15*, 44. <https://doi.org/10.1093/jisesa/iev029>
- Faria, M. R. D., & Wraight, S. P. (2007). Mycoinsecticides and mycoacaricides: A comprehensive list with worldwide coverage and international classification of formulation types. *Biological Control*, *43*, 237–256. <https://doi.org/10.1016/j.biocontrol.2007.08.001>
- Felsenstein, (1985). Confidence limits on phylogenies: An approach using the bootstrap. *Evolution*, *39*, 783–791. <https://doi.org/10.1111/j.1558-5646.1985.tb00420.x>
- Freed, S., Jin, F. L., & Ren, S. X. (2011). Determination of genetic variability among the isolates of *Metarhizium anisopliae* var. *anisopliae* from different geographical origins. *World Journal of Microbiology & Biotechnology*, *27*, 359–370.
- Gallou, A., Serna-Dominguez, M. G., Berlanga-Padilla, A. M., Ayala-Zermeno, M. A., Mellin-Rosas, M. A., Montesinos-Matias, R., & Arredondo-Bernal, H. C. (2016). Species clarification of *Isaria* isolates used as biocontrol agents against *Diaphorina citri* (Hemiptera: Liviidae) in Mexico. *Fungal Biology*, *120*, 414–423. <https://doi.org/10.1016/j.funbio.2015.11.009>
- Gandarilla-Pacheco, F. L., Galán-Wong, L. J., López-Arroyo, J. I., Rodríguez-Guerra, R., & Quintero-zapata, I. (2013). Optimization of pathogenicity tests for selection of native isolates of entomopathogenic fungi isolated from citrus growing areas of México on Adults of *Diaphorina citri* Kuwayama (Hemiptera: Liviidae). *Florida Entomologist*, *96*, 187–195.
- Hoy, M. A., Singh, R., & Rogers, M. E. (2010). Evaluations of a novel isolate of *Isaria fumosorosea* for control of the Asian citrus psyllid, *Diaphorina citri* (Hemiptera: Psyllidae). *Florida Entomologist*, *93*, 24–32.
- Ibarra-Cortes, K. H., Guzman-Franco, A. W., Gonzalez-Hernandez, H., Ortega-Arenas, L. D., Villanueva-jimenez, J. A., & Robles-bermudez, A. (2018). Susceptibility of *Diaphorina citri* (Hemiptera: Liviidae) and its parasitoid *Tamarixia radiata* (Hymenoptera: Eulophidae) to entomopathogenic fungi under laboratory conditions. *Neotropical Entomology*, *47*, 131–138. <https://doi.org/10.1007/s13744-017-0539-6>
- Inyang, E. N., McCartney, H. A., & Oyejola, B. (2000). Effect of formulation, application and rain on the persistence of the entomogenous fungus *Metarhizium anisopliae* on oilseed rape. *Mycological Research*, *104*, 653–661. <https://doi.org/10.1017/S0953756200002641>
- Jaber, S., Mercier, A., Knio, K., Brun, S., & Kambris, Z. (2016). Isolation of fungi from dead arthropods and identification of a new mosquito natural pathogen. *Parasites & Vectors*, *9*, 491. <https://doi.org/10.1186/s13071-016-1763-3>
- Juan-blasco, M., Qureshi, J. A., Urbaneja, A., & Stansly, P. A. (2012). Predatory Mite, *Amblyseius swirskii* (Acari: Phytoseiidae), for biological control of Asian citrus psyllid, *Diaphorina citri* (Hemiptera: Psyllidae). *Florida Entomologist*, *95*, 543–551.
- Kepler, R. M., Luangsaard, J. J., Hyweljones, N. L., Quandt, C. A., Sung, G. H., Rehner, S. A., et al. (2017). A phylogenetically-based nomenclature for *Cordycipitaceae* (Hypocreales). *IMA Fungus*, *8*, 335–353.
- Kim, J., Oh, J., Yoon, D. H., & Sung, G. H. (2017). Suppression of a methionine synthase by calmodulin under environmental stress in

- the entomopathogenic fungus *Beauveria bassiana*. *Environmental Microbiology Reports*, 9, 612–617.
- Lacey, L. A., Frutos, R., Kaya, H. K., & Vail, P. (2001). Insect pathogens as biological control agents: Do they have a future? *Biological Control*, 21, 230–248. <https://doi.org/10.1006/bcon.2001.0938>
- Lezama-Gutiérrez, R., Molina-Ochoa, J., Chávez-Flores, O., Ángel-Sahagún, C. A., Skoda, S. R., Reyes-Martínez, G., ... Foster, J. E. (2012). Use of the entomopathogenic fungi *Metarhizium anisopliae*, *Cordyceps bassiana* and *Isaria fumosorosea* to control *Diaphorina citri* (Hemiptera: Psyllidae) in Persian lime under field conditions. *International Journal of Tropical Insect Science*, 32, 39–44. <https://doi.org/10.1017/S1742758412000069>
- Lin, K. (1956). Etiological studies of yellow shoot of citrus. *Acta Phytopathologica Sinica*, 2, 13–42.
- Medina-Córdova, N., Rosales-Mendoza, S., Hernández-Montiel, L. G., & Angulo, C. (2018). The potential use of *Debaryomyces hansenii* for the biological control of pathogenic fungi in food. *Biological Control*, 121, 216–222. <https://doi.org/10.1016/j.biocontrol.2018.03.002>
- Mellin-Rosas, M. A., Sanchez-Gonzalez, J. A., Cruz-Avalos, A. M., Montesinos-Matias, R., & Arredondo-Bernal, H. C. (2016). Pathogenicity of entomopathogenic fungal strains on *Diaphorina citri* kuwayama under laboratory conditions. *Southwestern Entomologist*, 41, 791–799.
- Meyer, J. M., Hoy, M. A., & Boucias, D. G. (2008). Isolation and characterization of an *Isaria fumosorosea* isolate infecting the Asian citrus psyllid in Florida. *Journal of Invertebrate Pathology*, 99, 96–102. <https://doi.org/10.1016/j.jip.2008.03.007>
- Michaud, J. P., Olsen, L. E., & Olsen, L. E. (2004). Suitability of Asian citrus psyllid, *Diaphorina citri*, as prey for ladybeetles. *BioControl*, 49, 417–431. <https://doi.org/10.1023/B:BICO.0000034605.53030.db>
- Navarrete, B., Mcauslane, H., Deyrup, M., & Peña, J. E. (2013). Ants (Hymenoptera: Formicidae) Associated with *Diaphorina citri* (Hemiptera: Liviidae) and their role in its biological control. *Florida Entomologist*, 96, 590–597.
- Nguyen, H. C., Tran, T. V. A., Nguyen, Q. L., Nguyen, N. N., Nguyen, M. K., Nguyen, N. T. T., ... Lin, K. H. (2017). Newly isolated *Paecilomyces lilacinus* and *Paecilomyces javanicus* as novel biocontrol agents for *Plutella xylostella* and *Spodoptera litura*. *Notulae Botanicae Horti Agrobotanici Cluj-Napoca*, 45, 280. <https://doi.org/10.15835/nbha45110726>
- Pinto, A. P. F., Filho, A. B., Almeida, J. E. M. D., & Wenzel, E. I. M. (2012). *Beauveria bassiana* pathogenicity to *Diaphorina citri* and compatibility of the fungus with phytosanitary products. *Pesquisa Agropecuária Brasileira*, 47, 1673–1680.
- Saitou, N., & Nei, M. (1987). The neighbor-joining method: A new method for reconstructing phylogenetic trees. *Molecular Biology and Evolution*, 4, 406–425.
- Sharififard, M., Mossadegh, M. S., & Vazirizadeh, B. (2012). Effects of temperature and humidity on the pathogenicity of the entomopathogenic fungi in control of the house fly, *Musca domestica* L. (Diptera: Muscidae) under laboratory conditions. *Journal of Entomology*, 9, 282–288. <https://doi.org/10.3923/je.2012.282.288>
- Shimazu, M., & Takatsuka, J. (2010). *Isaria javanica* (anamorphic Cordycipitaceae) isolated from gypsy moth larvae, *Lymantria dispar* (Lepidoptera: Lymantriidae), in Japan. *Applied Entomology and Zoology*, 45, 497–504.
- Tansey, J. A., Vanaclocha, P., Monzo, C., Jones, M., & Stansly, P. A. (2017). Costs and benefits of insecticide and foliar nutrient applications to Huanglongbing-infected citrus trees. *Pest Management Science*, 73, 904–916. <https://doi.org/10.1002/ps.4362>
- Vega, F. E., Posada, F., Catherine Aime, M., Pava-Ripoll, M., Infante, F., & Rehner, S. A. (2008). Entomopathogenic fungal endophytes. *Biological Control*, 46, 72–82. <https://doi.org/10.1016/j.biocontrol.2008.01.008>
- Vilcinskas, A., & Götz, P. (1999). Parasitic fungi and their interactions with the insect immune system. *Advances in Parasitology*, 43, 267–313.
- Wang, C., & Wang, S. (2017). Insect pathogenic fungi: Genomics, molecular interactions, and genetic improvements. *Annual Review of Entomology*, 62, 73–90. <https://doi.org/10.1146/annurev-ento-031616-035509>
- Wei, G., Lai, Y., Wwang, G., Chen, H., Li, F., & Wang, S. (2017). Insect pathogenic fungus interacts with the gut microbiota to accelerate mosquito mortality. *Proceedings of the National Academy of Sciences of the United States of America*, 114, 5994–5999. <https://doi.org/10.1073/pnas.1703546114>
- Weintraub, P. G., & Beanland, L. (2006). Insect vectors of phytoplasmas. *Annual Review of Entomology*, 51, 91–111. <https://doi.org/10.1146/annurev.ento.51.110104.151039>
- Xiong, Q., Xie, Y., Zhu, Y., Xue, J., Li, J., & Fan, R. (2013). Morphological and ultrastructural characterization of *Carposina sasakii* larvae (Lepidoptera: Carposinidae) infected by *Beauveria bassiana* (Ascomycota: Hypocreales: Clavicipitaceae). *Micron*, 44, 303–311. <https://doi.org/10.1016/j.micron.2012.08.002>
- Yin, F., Qiong-Bo, H., Guo-Hua, Z., & Mei-Ying, H. (2010). Effects of destruxins on entomopathogenic fungus *Isaria javanicus* and the joint toxicity of their mixtures against the diamondback moth, *Plutella xylostella* (L.) (Lepidoptera: Plutellidae). *Acta Entomologica Sinica*, 53, 61–67.
- Zhang, C., Shao, Z. F., Han, Y. Y., Wang, X. M., Wang, Z. Q., Musa, P. D., ... Ali, S. (2018). Effects of *Aschersonia aleyrodis* on the life table and demographic parameters of *Bemisia tabaci*. *Journal of Integrative Agriculture*, 17, 389–396. [https://doi.org/10.1016/S2095-3119\(17\)61773-8](https://doi.org/10.1016/S2095-3119(17)61773-8)

How to cite this article: Ou D, Zhang L-H, Guo C-F, Chen X-S, Ali S, Qiu B-L. Identification of a new *Cordyceps javanica* fungus isolate and its toxicity evaluation against Asian citrus psyllid. *MicrobiologyOpen*. 2019;8:e760. <https://doi.org/10.1002/mbo3.760>