

# Coronary flow reserve and microcirculatory resistance in patients with coronary tortuosity and without atherosclerosis

Journal of International Medical Research

48(9) 1–6

© The Author(s) 2020

Article reuse guidelines:

[sagepub.com/journals-permissions](https://sagepub.com/journals-permissions)

DOI: 10.1177/0300060520955060

[journals.sagepub.com/home/imr](https://journals.sagepub.com/home/imr)



Yang Li , Xiaoguo Zhang, Qiming Dai and Genshan Ma

## Abstract

**Objective:** Coronary tortuosity may affect epicardial coronary arterial blood flow. This study aimed to investigate the effect of coronary tortuosity on coronary flow reserve and the coronary microcirculation in patients without apparent coronary atherosclerosis.

**Methods:** Prospective patients ( $n = 8$ , 3 men, mean age:  $58 \pm 6.0$  years) with coronary tortuosity and without apparent coronary atherosclerosis were enrolled. Coronary tortuosity was defined by the finding of  $\geq$ three bends (defined as a  $\geq 45^\circ$  change in vessel direction) along the main trunk of the left anterior descending artery or left circumflex artery. Coronary flow reserve and the index of microcirculatory resistance were measured by the thermodilution technique.

**Results:** A total of eight coronary arteries with coronary tortuosity were analyzed. The mean fractional flow reserve was  $0.98 \pm 0.007$ . The mean coronary flow reserve was  $1.5 \pm 0.3$ , which is much lower than that in the normal coronary artery as reported in the literature. The mean index of microcirculatory resistance was  $26.7 \pm 2.3$ , which is much higher than that in the normal coronary artery.

**Conclusions:** Coronary tortuosity is associated with decreased coronary flow reserve and an increased index of microcirculatory resistance.

**Trial registration:** This study is registered at the Chinese Clinical Trial Registry, NCT No: ChiCTR2000033671

Department of Cardiology, Zhongda Hospital, School of Medicine, Southeast University, Nanjing, China

## Corresponding author:

Yang Li, Department of Cardiology, School of Medicine, Zhongda Hospital, Southeast University, 87 Dingjia Bridge, Gulou District, Nanjing 210009, China.

Email: [lyxnk@foxmail.com](mailto:lyxnk@foxmail.com)



Creative Commons Non Commercial CC BY-NC: This article is distributed under the terms of the Creative

Commons Attribution-NonCommercial 4.0 License (<https://creativecommons.org/licenses/by-nc/4.0/>) which permits non-commercial use, reproduction and distribution of the work without further permission provided the original work is attributed as specified on the SAGE and Open Access pages (<https://us.sagepub.com/en-us/nam/open-access-at-sage>).

## Keywords

Coronary tortuosity, fractional flow reserve, microcirculatory resistance, atherosclerosis, microcirculation, ischemia

Date received: 8 July 2020; accepted: 13 August 2020

## Introduction

Although coronary tortuosity is a common finding in coronary angiography, the effects of CT on cardiovascular prognosis<sup>1,2</sup> and myocardial ischemia<sup>3,4</sup> remain to be determined. Whether coronary tortuosity is related to microvascular dysfunction, which can cause angina symptoms and increase the incidence of adverse cardiovascular events in some patients without severe coronary stenosis, is unclear.<sup>3,5</sup>

The index of microcirculatory resistance (IMR) and coronary flow reserve (CFR) can be used to define microvascular dysfunction.<sup>6-8</sup> Because coronary tortuosity may have some limited effect on epicardial coronary arterial blood flow,<sup>9-12</sup> we tested the hypothesis that coronary tortuosity is closely related to the coronary microcirculation. Therefore, the present study aimed to clarify the effect of coronary tortuosity on CFR and the IMR as derived by invasive measurement.

## Methods

### *Patient population*

Prospective patients who underwent coronary angiography owing to chest pain were included. Patients with acute coronary syndrome, previous myocardial infarction or coronary revascularization, myocardial diseases, tachycardia, diabetes, hypotension, or heart failure were excluded. The study was approved by the ethics committee of Zhongda Hospital, Southeast University (2018-01; NCT No: ChiCTR2000033671).

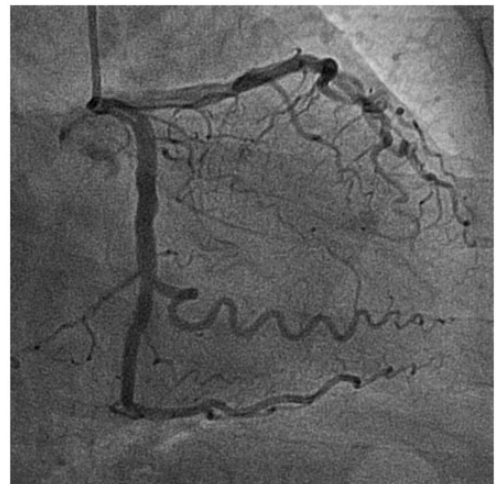
All enrolled patients signed informed consent.

### *Coronary angiography*

Coronary angiography was performed using standard techniques. Coronary tortuosity was evaluated by special angulations. Coronary tortuosity was identified by  $\geq$ three bends (defined as a  $\geq 45^\circ$  change in vessel direction) along the main trunk of the left anterior descending artery or left circumflex artery (Figure 1).

### *Coronary physiological assessment*

Coronary physiology was assessed as previously described.<sup>8,13</sup> In brief, we calibrated 0.014-inch coronary pressure to equalize the pressure of the guiding catheter with a sensor positioned at the ostium of the



**Figure 1.** Left circumflex coronary artery tortuosity.

coronary artery. The guiding catheter was then advanced to the distal coronary artery. CFR, the IMR, and fractional flow reserve (FFR) were measured as described below. The transit time of room temperature saline that was injected down from the coronary artery was determined by the thermodilution technique. A volume of 3 mL of room temperature saline was injected three times down the coronary arteries, and the resting mean transit time (Tmn) was measured. Hyperemia was induced on the basis of a reduction in average blood pressure by 20% through intravenous infusion of adenosine (140  $\mu\text{g}/\text{kg}/\text{minute}$ ), and the hyperemic Tmn was also measured. Mean aortic pressure (Pa) and mean distal coronary pressure (Pd) were measured in the maximal hyperemic states. FFR was calculated by

the ratio of Pd/Pa at maximal hyperemia. CFR was calculated by resting Tmn/hyperemic Tmn. The uncorrected IMR was calculated by  $\text{Pd} \times \text{Tmn}$  during hyperemia (Figure 2).

### Statistical analysis

SPSS version 15.0 for Windows (SPSS Inc., Chicago, IL, USA) was used to perform all statistical calculations. Continuous variables are expressed as arithmetic mean  $\pm$  standard deviation.

### Results

A total of eight patients (three men, mean age:  $58 \pm 6.0$  years) with coronary tortuosity and without apparent coronary atherosclerosis were enrolled. Two patients had



**Figure 2.** Measurement of CFR and the IMR.

Pa, aortic pressure; Pd, distal coronary pressure; FFR, fractional flow reserve; CFR, coronary flow reserve; IMR, index of microcirculatory resistance.

hypertension. A total of eight coronary arteries with tortuosity were evaluated. The mean FFR was  $0.98 \pm 0.007$ . The mean CFR was  $1.5 \pm 0.3$ , which is lower than that in the normal coronary artery (not measured in the current study, see normal data in the Discussion below). The mean IMR was  $26.7 \pm 2.3$ , which is higher than that in the normal coronary artery.

## Discussion

To the best of our knowledge, this is the first study to clarify the effect of coronary tortuosity on coronary microcirculation. The relationship between coronary tortuosity and coronary artery disease is controversial.<sup>2,14-16</sup> The effect of coronary tortuosity on coronary atherosclerosis may be due to altered distribution of endothelial shear stress.<sup>11,12,17,18</sup> Our results highlight the association between coronary tortuosity and disturbed coronary microcirculation. Because coronary microvascular dysfunction is an important cause of myocardial ischemia,<sup>19</sup> our data suggest that coronary tortuosity might be a reason for coronary microvascular dysfunction in patients without apparent coronary atherosclerosis. Structural and functional abnormalities are involved in the mechanism of coronary microvascular disease.<sup>19-21</sup> Patients with chest pain and nonobstructive coronary artery disease have a high prevalence of coronary microvascular abnormalities, but these are poorly associated with conventional cardiovascular risk factors.<sup>22</sup> Obstructive coronary artery disease, myocardial diseases, iatrogenic causes, and diabetes are associated with coronary microvascular disease.<sup>21,23-25</sup> Patients with ischemia and no obstructive coronary artery disease are associated with an elevated risk of major adverse cardiovascular events.<sup>26,27</sup> A number of invasive and non-invasive methods, including intracoronary Doppler flow velocity wires, positron

emission tomography, and cardiac magnetic resonance imaging, can be used to accurately assess microvascular function. The thermodilution-derived method for assessing coronary flow can be used for measuring CFR and the IMR.<sup>6,7,20,21</sup> Non-endothelium-dependent microvascular dysfunction is defined as  $CFR < 2.5$  in response to adenosine. Endothelium-dependent microvascular dysfunction is defined as a change in coronary blood flow in response to acetylcholine by  $< 50\%$ .<sup>22,27</sup> Guidewire-based CFR and IMR are recommended in the diagnosis of microvascular angina.<sup>28</sup> CFR and the IMR can provide additional diagnostic and prognostic values for patients with ischemic heart disease, and a low CFR with a high IMR are associated with a poor prognosis.<sup>29</sup> The IMR is the reciprocal of distal coronary pressure divided by the mean conduction time in the maximum congestive state.<sup>8</sup> A  $CFR \leq 2.0$  or  $IMR \geq 25$  are indicative of abnormal microcirculatory function.<sup>28</sup> Therefore, our data on a low CFR and a high IMR indicate the presence of coronary microcirculatory dysfunction.

Our previous simulation and experimental studies showed that coronary tortuosity resulted in a greater decrease in coronary blood pressure dependent on the severity of tortuosity, but this decrease may be limited to a certain extent.<sup>10,12</sup> A previous study showed that the effect of coronary tortuosity on coronary blood supply at rest was minimal.<sup>9</sup> However, coronary arteries with coronary tortuosity might lack the ability to sufficiently adjust for distal resistance to compensate for the extra resistance generated by tortuosity during exercise. Therefore, coronary tortuosity might lead to ineffective regulation of the blood supply during stress. In line with this finding, a maximum increase of 96% in mean diastolic driving pressure was observed in a coronary tortuosity model during exercise.<sup>11</sup> Our previous case study

showed that vessel wall pressure of a tortuous coronary artery was decreased in the bend section, and the maximum curvature was  $>1\text{ mm}^{-1}$  in this region.<sup>19</sup> Therefore, this may lead to inadequate blood supply in the downstream vessels. Our study showed that coronary tortuosity led to a reduction in CFR and an increase in the IMR, which indicated that coronary tortuosity was related to microcirculatory dysfunction. We speculate that the mechanism involved in our finding is related to endothelial dysfunction and ineffective regulation of blood supply.<sup>9,30</sup>

This study has some limitations. One limitation is that the sample size of the study was small. A larger sample size will be measured in a future study. The long-term effects of coronary tortuosity-related changes on a reduced FFR and high IMR should also be tested in a larger patient cohort.

## Conclusion

Coronary tortuosity can lead to a decrease in CFR and an increase in the IMR. Therefore, coronary tortuosity is related to microcirculatory dysfunction and may be related to myocardial ischemia during exercise. Future studies are required to validate if coronary tortuosity is the mechanism involved in patients with microcirculatory dysfunction.


## Declaration of conflicting interest

The authors declare that there is no conflict of interest.

## Funding

This research was partially supported by the National Natural Science Foundation of China (NSFC) (Grant No. 81300159).

## ORCID iD

Yang Li  <https://orcid.org/0000-0002-1205-0641>

## References

1. Kahe F, Sharfaei S, Pitliya A, et al. Coronary artery tortuosity: a narrative review. *Coron Artery Dis* 2020; 31: 187–192.
2. Li Y, Shen C, Ji Y, et al. Clinical implication of coronary tortuosity in patients with coronary artery disease. *PLoS One* 2011; 6: e24232.
3. Gaibazzi N, Rigo F and Reverberi C. Severe coronary tortuosity or myocardial bridging in patients with chest pain, normal coronary arteries, and reversible myocardial perfusion defects. *Am J Cardiol* 2011; 108: 973–978.
4. Zegers ES, Meursing BT, Zegers EB, et al. Coronary tortuosity: a long and winding road. *Neth Heart J* 2007; 15: 191–195.
5. Li Y, Liu NF, Gu ZZ, et al. Coronary tortuosity is associated with reversible myocardial perfusion defects in patients without coronary artery disease. *Chin Med J (Engl)* 2012; 125: 3581–3583.
6. Fearon WF and Kobayashi Y. Invasive Assessment of the Coronary Microcirculation. *JACC Cardiovasc Interv* 2016; 9: 802–804.
7. Layland J, Nerlekar N, Palmer S, et al. Invasive assessment of the coronary microcirculation in the catheter laboratory. *Int J Cardiol* 2015; 199: 141–149.
8. Kobayashi Y and Fearon WF. Invasive coronary microcirculation assessment—current status of index of microcirculatory resistance. *Circ J* 2014; 78: 1021–1028.
9. Xie X, Wang Y, Zhu H, et al. Impact of coronary tortuosity on coronary blood supply: a patient-specific study. *PLoS One* 2013; 8: e64564.
10. Li Y, Shi Z, Cai Y, et al. Impact of coronary tortuosity on coronary pressure: numerical simulation study. *PLoS One* 2012; 7: e42558.
11. Xie X, Wang Y and Zhou H. Impact of coronary tortuosity on the coronary blood flow: a 3D computational study. *J Biomech* 2013; 46: 1833–1841.
12. Li Y, Liu X, Li Z, et al. Impact of coronary tortuosity on coronary pressure and wall shear stress: an experimental study. *Mol Cell Biomech* 2017; 14: 213–219.
13. Ng MK, Yeung AC and Fearon WF. Invasive assessment of the coronary microcirculation: superior reproducibility and less

- hemodynamic dependence of index of micro-circulatory resistance compared with coronary flow reserve. *Circulation* 2006; 113: 2054–2061.
14. El Tahlawi M, Sakrana A, Elmurr A, et al. The relation between coronary tortuosity and calcium score in patients with chronic stable angina and normal coronaries by CT angiography. *Atherosclerosis* 2016; 246: 334–337.
  15. Li Y, Feng Y, Ma G, et al. Coronary tortuosity is negatively correlated with coronary atherosclerosis. *J Int Med Res* 2018; 46: 5205–5209.
  16. Groves SS, Jain AC, Warden BE, et al. Severe coronary tortuosity and the relationship to significant coronary artery disease. *W V Med J* 2009; 105: 14–17.
  17. Xie X, Wang Y, Zhu H, et al. Computation of hemodynamics in tortuous left coronary artery: a morphological parametric study. *J Biomech Eng* 2014; 136: 101006.
  18. Yang L, Xu Z, Zhiyong L, et al. Effect of Coronary Artery Tortuosity on Coronary Hemodynamics Based on Case Study. *Journal of Medical Biomechanics* 2018; 33: 229–233.
  19. Kaski JC, Crea F, Gersh BJ, et al. Reappraisal of Ischemic Heart Disease. *Circulation* 2018; 138: 1463–1480.
  20. Taqueti VR and Di Carli MF. Coronary Microvascular Disease Pathogenic Mechanisms and Therapeutic Options: JACC State-of-the-Art Review. *J Am Coll Cardiol* 2018; 72: 2625–2641.
  21. Camici PG, D'Amati G and Rimoldi O. Coronary microvascular dysfunction: mechanisms and functional assessment. *Nat Rev Cardiol* 2015; 12: 48–62.
  22. Sara JD, Widmer RJ, Matsuzawa Y, et al. Prevalence of Coronary Microvascular Dysfunction Among Patients With Chest Pain and Nonobstructive Coronary Artery Disease. *JACC Cardiovasc Interv* 2015; 8: 1445–1453.
  23. Kibel A, Selthofer-Relatic K, Drenjancevic I, et al. Coronary microvascular dysfunction in diabetes mellitus. *J Int Med Res* 2017; 45: 1901–1929.
  24. Camici PG and Crea F. Coronary microvascular dysfunction. *N Engl J Med* 2007; 356: 830–840.
  25. Kofflard MJ, Michels M, Krams R, et al. Coronary flow reserve in hypertrophic cardiomyopathy: relation with microvascular dysfunction and pathophysiological characteristics. *Neth Heart J* 2007; 15: 209–215.
  26. Herscovici R, Sedlak T, Wei J, et al. Ischemia and No Obstructive Coronary Artery Disease (INOCA): What Is the Risk? *J Am Heart Assoc* 2018; 7: e008868.
  27. Bairey Merz CN, Pepine CJ, Walsh MN, et al. Ischemia and No Obstructive Coronary Artery Disease (INOCA): Developing Evidence-Based Therapies and Research Agenda for the Next Decade. *Circulation* 2017; 135: 1075–1092.
  28. Knuuti J, Wijns W, Saraste A, et al. 2019 ESC Guidelines for the diagnosis and management of chronic coronary syndromes. *Eur Heart J* 2020; 41: 407–477.
  29. Lee JM, Jung JH, Hwang D, et al. Coronary Flow Reserve and Microcirculatory Resistance in Patients With Intermediate Coronary Stenosis. *J Am Coll Cardiol* 2016; 67: 1158–1169.
  30. Hongjun Z, Jintao H, Cong L, et al. The Effect of Different Curvature on the Distribution of Nitric Oxide Concentration in the Curved Arterial Segment. *Chinese Journal of Biomedical Engineering* 2017; 36: 316–321.