

Research Article



Prevalence of *Porphyromonas gingivalis fimA* genotypes in peri-implant sulcus of Koreans using new primer

Sung-Geun Kim,^{1†} Ji-Youn Hong,^{1,2,†} Seung-Il Shin,^{1,2} Ji-Hoi Moon,³ Jin-Yong Lee,³ Yeek Herr^{1,2,*}

¹Department of Periodontology, Kyung Hee University School of Dentistry, Seoul, Korea

²Department of Periodontology, Institute of Oral Biology, Kyung Hee University School of Dentistry, Seoul, Korea

³Department of Maxillofacial Biomedical Engineering, Kyung Hee University School of Dentistry, Seoul, Korea



Received: Nov 19, 2015
Accepted: Jan 23, 2016

*Correspondence to
Yeek Herr

Department of Periodontology, Kyung Hee University School of Dentistry, 26 Kyungheedae-ro, Dongdaemun-gu, Seoul 02447, Korea.
E-mail: yherr@khu.ac.kr
Tel: +82-2-938-9382
Fax: +82-2-938-9387

[†]Sung-Geun Kim and Ji-Youn Hong contributed equally to this work.

Copyright © 2016 Korean Academy of Periodontology
This is an Open Access article distributed under the terms of the Creative Commons Attribution Non-Commercial License (<http://creativecommons.org/licenses/by-nc/3.0/>).

ORCID

Sung-Geun Kim
<http://orcid.org/0000-0002-4698-5306>
Ji-Youn Hong
<http://orcid.org/0000-0003-1040-7077>
Seung-Il Shin
<http://orcid.org/0000-0001-8762-6169>
Ji-Hoi Moon
<http://orcid.org/0000-0003-0286-5297>
Jin-Yong Lee
<http://orcid.org/0000-0002-4193-0445>

ABSTRACT

Purpose: *Porphyromonas gingivalis fimA* is a virulence factor associated with periodontal diseases, but its role in the pathogenesis of peri-implantitis remains unclear. We aimed to evaluate the relationship between the condition of peri-implant tissue and the distribution of *P. gingivalis fimA* genotypes in Koreans using a new primer.

Methods: A total of 248 plaque samples were taken from the peri-implant sulci of 184 subjects. The control group consisted of sound implants with a peri-implant probing depth (PD) of 5 mm or less with no bleeding on probing (BOP). Test group I consisted of implants with a peri-implant PD of 5 mm or less and BOP, and test group II consisted of implants with a peri-implant PD of more than 5 mm and BOP. DNA was extracted from each sample and analyzed using a polymerase chain reaction (PCR) with *P. gingivalis*-specific primers, followed by an additional PCR assay to differentiate the *fimA* genotypes in *P. gingivalis*-positive subjects.

Results: The prevalence of *P. gingivalis* in each group did not significantly differ ($P>0.05$). The most predominant *fimA* genotype in all groups was type II. The prevalence of type Ib *fimA* was significantly greater in test group II than in the control group ($P<0.05$).

Conclusions: The *fimA* type Ib genotype of *P. gingivalis* was found to play a critical role in the destruction of peri-implant tissue, suggesting that it may be a distinct risk factor for peri-implantitis.

Keywords: Fimbriae; Peri-implantitis; Periodontal diseases; Virulence factors

INTRODUCTION

Osseointegrated implants used to treat partially or fully edentulous patients have shown predictable long-term success and survival rates. However, reports describing post-implantation

Yeek Herr
<http://orcid.org/0000-0001-9243-7119>

Conflict of Interest

No potential conflict of interest relevant to this article was reported.

complications and implant failures have recently become more frequent. Implant failures can be categorized as early and late failures. Early failures are often caused by problems in the surgical operation itself or by implant- and patient-related factors before functional loading is applied. Late failures occur after prosthetic loading, and are usually caused by overloading or peri-implant disease. Bacterial infections are the major cause of peri-implant disease, which is classified as peri-implant mucositis and peri-implantitis [1]. Among the more than 500 species of microorganisms that exist in the oral cavity, certain anaerobic, gram-negative species often aggravate periodontal disease. Paster et al. [2] established that *Porphyromonas gingivalis*, *Prevotella intermedia*, *Aggregatibacter actinomycetemcomitans*, *Tannerella forsythia*, and *Treponema denticola* play a critical role in deep periodontal pockets. These species can affect not only the periodontal pockets involved in periodontitis, but also peri-implant tissue. Bacteria colonize the peri-implant sulcus within two weeks of implant placement. Further plaque accumulation in the site leads to peri-implant infection and the advancement of peri-implant disease [1]. The bacterial species found in healthy peri-implant sulci are very similar to the subgingival bacteria in healthy periodontal tissue, and the bacterial species found in cases of peri-implant disease are very similar to the subgingival bacterial complexes found in chronic or recurrent periodontitis patients [3]. *P. gingivalis* and *A. actinomycetemcomitans* have been found in the buccal gingival sulci of implant abutments [4]. As transmission of microbes is common within the oral cavity, the condition of the residual teeth influences the microbial composition of early plaque around implants [5]. Mombelli et al. [5] reported that more pathogenic bacteria were detected in residual teeth with a history of periodontal disease than in teeth without such a history.

One of the key periodontal pathogens, *P. gingivalis* is gram-negative, black-pigmented, and anaerobic [6]. *P. gingivalis* is not only responsible for periodontal disease in the natural dentition, but it also associated with peri-implant tissue destruction. Salcetti et al. [7] reported a higher detection rate of *P. gingivalis*, *T. forsythia*, and *T. denticola* species in failed implants in comparison with healthy implants. Rutar et al. [8] reported a significant relationship between peri-implant probing depth and the detection of *P. gingivalis*. Botero et al. [9] compared the bacterial species found in healthy peri-implant tissue with those found in tissue with peri-implant disease, and *P. gingivalis* was only found in tissue with peri-implant disease.

The virulence factors of *P. gingivalis* include fimbriae, its capsule, collagenase, and gingipains [10,11]. In particular, the fimbriae of *P. gingivalis* play a critical role in adherence to the host cell, facilitating bacterial invasion and infection [10,12,13]. They also promote early plaque formation and regulate plaque maturation [14]. Various inflammatory cytokines (IL-1 α , IL- β , IL-6, TNF- α) expressed by the fimbriae facilitate alveolar bone resorption [15]. Lee et al. [16] were the first to report mutations of the FimA protein, and Nakagawa et al. [17] identified six different genotypes (types I–V, Ib) of the *fimA* gene, which encodes fimbriin, a subunit of the fimbriae, according to nucleotide sequences. Nakagawa et al. [13] reported that type II *fimA* was capable of more efficient attachment to host cells and cell invasion, thus playing a more important role in the pathogenicity of periodontal disease than other genotypes. However, Umeda et al. [18] found no significant differences in epithelial attachment and invasion among the different genotypes. Amano et al. [19] reported that *P. gingivalis* with type I *fimA* was closely associated with periodontally healthy individuals. Nagano et al. [20] found the expression of *fimA* to be positively related to plaque accumulation for all genotypes, with type I *fimA* showing an especially close relationship to plaque formation. The prevalence of *P. gingivalis* *fimA* genotypes in peri-implant sulci was studied by Shin et al. [21] and Seo et al. [22], and *P. gingivalis* type II *fimA* was found to be significantly correlated with peri-implantitis.

However, as type Ib *fimA* shares 97.1% and 77.5% of its nucleotide sequence with type I and type II *fimA*, respectively, cross-hybridization is likely to occur during polymerase chain reaction (PCR) analysis [17,23]. Type I and Ib *fimA* genotypes can be discriminated with *RsaI*-digestion [17], but the possibility of false positive detection with PCR using conventional primers has been reported [17,23]. In order to overcome this problem and increase the accuracy of sequencing, Moon et al. [24] suggested a new primer that is specific for the DNA of type II *fimA*.

The purpose of this study was to evaluate the relationship between the condition of peri-implant tissue and the distribution of *P. gingivalis* *fimA* genotypes, using new primers in Korean subjects.

MATERIALS AND METHODS

Study population

The distribution of *P. gingivalis* *fimA* genotypes in peri-implant sulci was studied in a group of patients with a history of implant placement who visited the Department of Periodontology, Kyung Hee University Dental Hospital, Republic of Korea from January 2007 to November 2011. The exclusion criteria included patients with a history of systemic or local use of antimicrobials three months prior to the study and patients with known systemic conditions that could influence their periodontal status. The control group consisted of sound implants with a peri-implant probing depth of 5 mm or less with no bleeding on probing. Test group I consisted of implants with a peri-implant probing depth of 5 mm or less with bleeding on probing, while test group II consisted of implants with a peri-implant probing depth of more than 5 mm with bleeding on probing. This study was approved by the Ethical Committee of the School of Dentistry, Kyung Hee University (KHUSD IRB2009-02).

Plaque sampling in peri-implant sulci and DNA isolation

Supragingival plaque was removed prior to subgingival plaque sampling. Sampling sites were protected from saliva influx with sterile cotton pellets and compressed air. Sterile paper points were inserted into two deepest pockets of the implants for 30 seconds and removed. The paper points were collected in a sterile tube with 1 mL of sterile phosphate-buffered saline (pH 7.4). Bacterial genomic DNA was extracted from the plaque samples using the InstaGene™ Matrix kit (Bio-Rad Laboratories, Hercules, CA, USA) according to the manufacturer's instructions. The InstaGene matrix suspension was added to the plaque samples, and the mixture was incubated at 56°C for 15 minutes and boiled at 100°C for eight minutes. After centrifugation, the DNA-containing supernatant obtained was subjected to PCR amplification.

Polymerase chain reaction

The presence of *P. gingivalis* in peri-implant sulci was confirmed using DNA extracted from the plaque samples by PCR. Certain DNA sequences in acquired plaque samples were identified using universal primers, based on *P. gingivalis*-specific 16S rRNA sequences, and analyzed further to differentiate their *fimA* genotypes using the six sets of *fimA* type-specific primers. The primer newly suggested for type II *fimA* by Moon et al. [24] was used (Table 1). PCR amplification was performed in a total volume of 20 µL containing 10 µL of PCR Pre-Mix (STD02-M50h; SolGent, Korea), with 0.5 µM of each primer and 5 µL of the template

Table 1. Oligonucleotide primers used in this study

Primer set	Primer sequence (5'-3')	Size (bp)	Reference
Universal	F: AGAGTTTGATCMTGGCTCAG	315	Tamura et al. (2005)[39]
	R: CTGCTGCSYCCCGTAG		
<i>P. gingivalis</i> 16S rRNA	F: TGTAGTGACTGATGGTGAAAACC	197	Amano (1999)[7]
	R: ACGTCATCCCCACCTTCCTC		
Type I	F: CTGTGTGTTTATGGCAAACCTTC	392	Amano (1999)[7]
	R: AACCCCGCTCCCTGTATTCCGA		
Type II (new)	F: GCATGATGGTACTCCTTTGA	292	Moon et al. (2011)[25]
	R: CTGACCAACGAGAACCCTACT		
Type III	F: ATTACACTACACAGGTGAGGC	247	Amano (1999)[7]
	R: AACCCCGCTCCCTGTATTCCGA		
Type IV	F: CTATTCAGGTGCTATTACCCAA	251	Amano (1999)[7]
	R: AACCCCGCTCCCTGTATTCCGA		
Type V	F: AACAAAGTCTCCTTGACAGTG	462	Nakagawa et al. (2000)[40]
	R: TATTGGGGTTCGAACGTTACTGTC		
Type Ib	F: CAGCAGAGCCAA AAACAATCG	271	Nakagawa et al. (2002)[18]
	R: TGTCAGATAATTAGCGTCTGC		

DNA solution in sterile distilled water. DNA amplification was performed with a thermal cycler (Model 9700; Applied Biosystems, Branchburg, NJ, USA): an initial denaturation was performed at 95°C for five minutes; followed by 30 cycles at 94°C for 30 seconds, 55°C for 30 seconds, and 72°C for 30 seconds; and a final extension at 72°C for seven minutes.

P. gingivalis-positive specimens were classified according to six different types of specific primer sets. The PCR products were electrophoresed on a 1.8% agarose gel (Figure 1). Type I and Ib *fimA* genotypes were further categorized by *RsaI*-digestion (Figure 2).

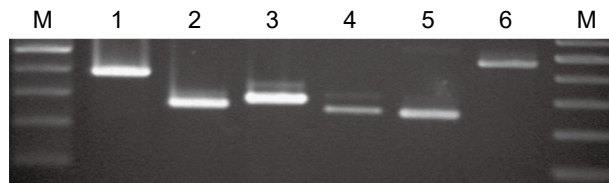


Figure 1. Electrophoresis of amplification products on a 1.8% agarose gel. Lines 1–6 are type I, type Ib, type II (new), type III, type IV, and type V. M, molecular weight marker.

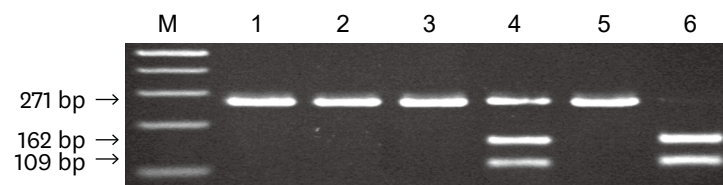


Figure 2. Detection of type Ib *fimA* by polymerase chain reaction amplification and *RsaI* digestion. Lanes 1–3 comprise *fimA* amplicons from a mixed culture of *P. gingivalis* strains (ATCC33277 for type I *fimA* and HG1691 for type Ib *fimA*), the pure culture of strain ATCC33277, and the pure culture of strain HG1691, respectively, using type Ib primers. Lanes 4–6 show the amplicons of lanes 1–3 digested with *RsaI*. M, molecular weight marker.

Statistical analysis

The power of the goodness of fit or the chi-square independence test is given by $1 - \beta = F_{df, \lambda}(x_{crit})$, where F is the cumulative distribution function for the noncentral chi-square distribution $\chi^2(df)$; x_{crit} is the $\chi^2(df)$ critical value for a given value of alpha; and $\lambda = w^2n$ is the noncentrality parameter, where w is the ϕ effect size and n is the sample size. Based on a formula reflecting a medium effect size ($w = 0.3$) [25], we calculated that the sample size required per group was 36 and that the total sample size required was 108, at an alpha of 0.05 and a power of 0.8. Assuming a prevalence of *P. gingivalis* ranging between 55% and 95% in Korean adults [26], we estimated that a total of 114–198 subjects would be required.

The comparative frequencies of *P. gingivalis* in the control and test groups and the frequency of each *fimA* genotype were analyzed using the chi-square test or Fisher’s exact test. In all statistical analyses, P values < 0.05 were considered statistically significant. All statistical calculations were performed using SPSS 18.0 (SPSS Inc., Chicago, IL, USA).

RESULTS

The study consisted of 184 subjects: 88 men (age range, 32–76 years; mean age, 57.0 ± 11.4 years) and 96 women (age range, 29–72 years; mean age, 54.2 ± 10.4 years). Among 248 plaque samples, *P. gingivalis* was detected in 236 samples (177 subjects; mean age, 55.0 ± 9.5 years), with an infection rate of 95.2%. Ultimately, 85/91 (93.4%) samples from the healthy control group, 96/101 samples (95.0%) from test group I, and 55/56 samples (98.2%) from test group II were included in the study. Of the 177 *P. gingivalis*-positive subjects, 61 were in the control group, 70 were in test group I, and 46 were in test group II. A single plaque sample was collected from 133 subjects, while two or more samples were collected from 44 subjects. The distribution of sample collection sites is presented in Table 2. More than 70% of the samples were from implants in posterior sites.

Table 3 shows the distribution of *P. gingivalis* according to the *fimA* genotype detected in plaque specimens. In the control group, type I was detected in 11 specimens (12.9%), type II in 51 specimens (60.0%), type III in two specimens (2.4%), type IV in nine specimens (10.6%), and type Ib in five specimens (5.9%). No *fimA* genotype was detected in 23 specimens (27.1%). In test group I, *fimA* type I was found in 10 specimens (10.4%), type II in 62 specimens (64.6%), type III in seven specimens (7.3%), type IV in 14 specimens (14.6%), and type Ib in nine specimens (9.4%). Nineteen specimens (19.8%) showed no *fimA* genotype. Test group II showed *fimA* type I in nine specimens (16.4%), type II in 32 specimens (58.2%), type III in 0 specimens (0.0%), type IV in nine specimens (16.4%), and type Ib in 12 specimens (21.8%). No genotype was detected in nine specimens (16.4%). Type V was not detected in any group. It was not the case that each specimen expressed a single *fimA* genotype; in some cases, two or more genotypes were detected together. Two genotypes were detected in seven specimens

Table 2. Distribution of sample collection sites

Groups	Maxillary anterior	Maxillary posterior	Mandibular anterior	Mandibular posterior	Unknown	Total
Control	6 (7.1%)	28 (32.9%)	1 (1.2%)	31 (36.5%)	19 (22.4%)	85 (100%)
Test I	7 (7.3%)	30 (31.3%)	7 (7.3%)	40 (41.7%)	12 (12.5%)	96 (100%)
Test II	9 (16.4%)	21 (38.2%)	2 (3.6%)	20 (36.4%)	3 (5.5%)	55 (100%)
Total	22 (9.3%)	79 (33.5%)	10 (4.2%)	91 (38.6%)	34 (14.4%)	236 (100%)

Table 3. Distribution of the six *fimA* genotypes in *P. gingivalis* – positive samples

<i>fimA</i> type	Frequency of occurrence (%)		
	Control	Test group I	Test group II
I	6 (7.1)	2 (2.1)	0 (0.0)
II	41 (48.2)	45 (46.9)	24 (43.6)
III	1 (1.2)	0 (0.0)	0 (0.0)
IV	2 (2.4)	7 (7.3)	4 (7.3)
V	0 (0.0)	0 (0.0)	0 (0.0)
Ib	1 (1.2)	4 (4.2)	7 (12.7)
Subtotal	51 (60.0)	58 (60.4)	35 (63.6)
I/II	1 (1.2)	1 (1.0)	4 (7.3)
I/IV	0 (0.0)	0 (0.0)	1 (1.8)
I/Ib	0 (0.0)	1 (1.0)	1 (1.8)
II/III	1 (1.2)	6 (6.3)	0 (0.0)
II/IV	4 (4.7)	4 (4.2)	1 (1.8)
III/IV	0 (0.0)	1 (1.0)	0 (0.0)
IV/Ib	1 (1.2)	0 (0.0)	1 (1.8)
Subtotal	7 (8.3)	13 (13.5)	8 (14.5)
I/II/IV	1 (1.2)	2 (2.1)	0 (0.0)
I/II/Ib	2 (2.4)	4 (4.2)	1 (1.8)
I/II/IV/Ib	1 (1.2)	0 (0.0)	2 (3.6)
Subtotal	4 (4.7)	6 (6.3)	3 (5.5)
Untypeable	23 (27.1)	19 (19.8)	9 (16.4)
Total	85 (100)	96 (100)	55 (100)
I	11 (12.9)	10 (10.4)	9 (16.4) ^{b)}
II	51 (60.0)	62 (64.6)	32 (58.2) ^{b)}
III	2 (2.4)	7 (7.3)	0 (0.0) ^{c)}
IV	9 (10.6)	14 (14.6)	9 (16.4) ^{b)}
V	0 (0.0)	0 (0.0)	0 (0.0)
Ib ^{a)}	5 (5.9)	9 (9.4)	12 (21.8) ^{b)}

^{a)}Statistically significant differences between the control group and test group II ($P < 0.05$).

^{b)}The chi-square test

^{c)}Fisher's exact test

(8.3%) in the control group, 13 specimens (13.5%) in test group I, and eight specimens (14.5%) in test group II. More than three genotypes were detected in four specimens (4.7%) in the control group, six specimens (6.3%) in test group I, and three specimens (5.5%) in test group II. The amount of specimens with a single genotype in all three groups was similar, and the differences among groups in this regard were not statistically significant. The most frequently detected *P. gingivalis fimA* genotype was type II in all groups. None of the *fimA* genotypes in test group I exhibited a distribution significantly different than was observed in the control group. Test group II showed a statistically significant difference regarding type Ib *fimA*.

The distribution of *fimA* genotypes according to pocket probing depth of the patients in the test groups showed a 7.3% detection rate of the type III genotype in patients with a probing depth of 5 mm or less, which was significantly higher than the detection rate in patients with a probing depth greater than 5 mm. Type Ib was detected in 21.8% of specimens from patients with a probing depth greater than 5 mm, which was significantly higher than the detection rate in specimens with a probing depth of 5 mm or less (Table 3).

DISCUSSION

This study examined the prevalence of *P. gingivalis fimA* genotypes in plaque samples from the peri-implant sulci of Korean patients by PCR, using a new primer for type II *fimA*. The control group showed a *P. gingivalis* infection rate of 93.4%, with rates of 95.0% and 98.2% for test groups I and II, respectively. These differences were not statistically significant. The presence of *P. gingivalis* in general may not be related to peri-implant disease; instead, it is possible that bacterial colonies with a specific genotype influence peri-implant tissue destruction. Therefore, not all bacterial colonies of the same species necessarily show the same pathogenicity. Instead, the severity and progression of the disease may be dependent on the specific genotype of the bacterial colonies.

Previous studies of the distribution of *P. gingivalis fimA* genotypes were mostly based on patients with periodontitis. *P. gingivalis* type II *fimA* was the most frequently detected, followed by type IV, as in studies of Japanese and Chinese patients with chronic periodontitis [6,17,19,27]. Type II and type Ib were detected most frequently in Brazilian [28] and Spanish [29] populations. Although differences among studies exist, type II *fimA* has been found to be the most closely related to chronic periodontitis, corresponding to the results of the present study based on a Korean population sample, in which the highest detection rate of type II *fimA* was observed in patients with peri-implant lesions. However, unlike the findings of previous studies that reported a low detection rate of type II *fimA* in healthy teeth [17,27], we also frequently found type II *fimA* around healthy implants. This can be interpreted in two possible ways: either healthy implants with type II *fimA* have the potential to develop peri-implantitis in the future or type II *fimA* is not a risk indicator for implants, unlike for natural teeth.

In this study, type Ib *fimA* was found to be detected significantly more frequently in test group II than in the other groups. *P. gingivalis* with type Ib *fimA* plays a critical role in peri-implant tissue destruction and is a potential risk indicator for peri-implantitis.

The *fimA* genotypes in implants with inflammatory lesions were analyzed according to probing depth. Type Ib was detected in 8.9% of samples with a pocket depth of 5 mm or less, versus in 21.4% of samples with a pocket depth greater than 5 mm, which was a statistically significant difference. Therefore, the presence of type Ib *fimA* was related to deepening of the probing depth over the course of the progression of implant disease. Type III was only present in patients with a probing depth of 5 mm or less, which corresponds to previous reports in which type III was observed in periodontally healthy individuals and/or in sites with a low probing depth [19,23,27]. Nakano et al. [30] subcutaneously injected variable *P. gingivalis fimA* genotypes and compared the inflammatory response, finding that type III showed the weakest inflammatory response.

Unlike previous reports, the present study found noteworthy results regarding type Ib *fimA* relative to type II. Several potential reasons exist for this discrepancy. First, unlike preceding studies, this study used new primers to prevent the false negative or false positive detection of type II *fimA*. The *fimA* genotype was originally classified into five types (types I to V), before Nakagawa et al. [17] defined type Ib. Several studies may have mistakenly detected type Ib as type II due to accidental cross-hybridization, meaning that the relative risk of type II could have been overestimated [26]. In order to reduce the likelihood of such errors, Moon et al. [24] developed a new primer that was shown to be effective in promoting accurate detection

of type II *fimA*. Recent studies on the prevalence of each *fimA* genotype of *P. gingivalis* in the Korean population using new primers for type II have shown a high prevalence of types II, Ib, and IV *fimA* in periodontitis patients. In particular, the correlation between chronic periodontitis and type Ib *fimA* was found to be the most significant [26]. This corresponds to the finding of the present study that type Ib *fimA* was the genotype most significantly related with peri-implant inflammatory lesions. Second, the results of a study evaluating the *fimA* genotypes of *P. gingivalis* in peri-implant sulci may be different from those reported in studies of natural teeth. Subramani et al. [31] demonstrated variation in the composition of bacterial plaque around implants and natural teeth caused by the fact that they have different surface roughness and surface energy. According to Koyanagi et al. [32], a more complicated microbial complex of plaque existed in peri-implantitis sites than in periodontitis sites, and periodontal pathogens were detected less frequently. Environmental differences between peri-implant and periodontal sulci account for the variability of the *P. gingivalis fimA* genotypes associated with periodontitis and peri-implantitis. Third, fimbriae are not the only virulence factors of *P. gingivalis*, and the presence of other virulence factors may have affected the findings of previous studies. Representative virulence factors include encapsulation (K1–K6 serotypes) and gingipains. Gingipains are a type of proteolytic enzyme, and can be further classified into arginine-specific types A, B, and C and lysine-specific types I and II. Laine and van Winkelhoff [33] reported that encapsulated *P. gingivalis* was associated with the formation of more severe periodontal abscesses. Imamura [11] concluded that gingipain functions as a virulence factor by inhibiting the host immune response, increasing the tendency for bleeding, and promoting inflammation, thus aggravating periodontal disease. Therefore, periodontal disease may develop through a complex and combined response to various virulence factors not associated with *P. gingivalis fimA* genotypes. Fourth, variability may exist across racially and geographically diverse populations. Rylev and Kilian [34] found a diverse distribution of the genotypes of the periodontal pathogens *P. gingivalis* and *A. actinomycetemcomitans* in different races, which in turn influenced the prevalence of periodontitis. Many studies drawing on subjects from distinct ethnic groups have shown different *fimA* genotypes to be associated with virulence. The study of van der Ploeg et al. [35] was based on periodontitis patients in Norway and Switzerland, and type IV was detected more frequently than type II. Additionally, Beikler et al. [36] reported no correlation between the severity of periodontal disease and *P. gingivalis fimA* genotype in a study based on Caucasians. The higher prevalence of type I *fimA* reported in this study in comparison to a previous study including Asian subjects may be explained as a result of differences in the geographic location. Thus, the novel results of this study regarding the distribution of the type Ib genotype may only be pertinent for the Korean population.

In the present study, a single *P. gingivalis fimA* genotype was detected in approximately 60% of the control and test groups, and two or more types were also found in a subset of the samples. The multiple genotype occurrence rate in the test groups was approximately 20%, which is similar to the results of several previous studies (23%-26%) [17,19,23]. The prevalence of *P. gingivalis* with unclassified genotypes was high compared to the findings of Amano et al. [6] and Nakagawa et al. [17]. Hayashi et al. [37] explained this variability as being due to sampling methods. The sterile paper points used to acquire plaque samples in peri-implant sulci may not be as effective as the direct collection of plaque using curettes, meaning that fewer specimens of *P. gingivalis* were obtained than would have been possible using curettes. This may have contributed to the fact that we found a higher number of *P. gingivalis* genotypes that we were unable to classify. Additionally, Perez-Chaparro et al. [38] pointed out the

limitations of PCR in discriminating variance within the *fimA* genotype of *P. gingivalis*. Little is understood about the influence of unclassified *P. gingivalis* groups on peri-implantitis. The presence of unclassified genotypes suggests the possibility that some *fimA* genotypes remain to be discovered and classified, and future studies are expected on this topic.

This study found that a higher prevalence of *P. gingivalis* with type Ib *fimA* was significantly associated with peri-implant disease progression. Further studies of the *fimA* genotype distribution of *P. gingivalis* in a wide range of ethnic groups are necessary, and would be facilitated by increasing the sensitivity of PCR and lowering the rate of unclassified *P. gingivalis* genotypes through the use of new primers.

ACKNOWLEDGEMENTS

The authors thank Dr. Chong-Hyuk Chung, Dr. Seung-Yun Shin and Dr. Hyun-Chang Lim for their dedication to this research.

REFERENCES

1. Mombelli A, Lang NP. The diagnosis and treatment of peri-implantitis. *Periodontol* 2000 1998;17:63-76.
[PUBMED](#) | [CROSSREF](#)
2. Paster BJ, Boches SK, Galvin JL, Ericson RE, Lau CN, Levanos VA, et al. Bacterial diversity in human subgingival plaque. *J Bacteriol* 2001;183:3770-83.
[PUBMED](#) | [CROSSREF](#)
3. Heydenrijk K, Meijer HJ, van der Reijden WA, Raghoobar GM, Vissink A, Stegenga B. Microbiota around root-form endosseous implants: a review of the literature. *Int J Oral Maxillofac Implants* 2002;17:829-38.
[PUBMED](#)
4. de Oliveira GR, Pozzer L, Cavaliere-Pereira L, de Moraes PH, Olate S, de Albergaria Barbosa JR. Bacterial adhesion and colonization differences between zirconia and titanium implant abutments: an in vivo human study. *J Periodontal Implant Sci* 2012;42:217-23.
[PUBMED](#) | [CROSSREF](#)
5. Mombelli A, Marxer M, Gaberthüel T, Grunder U, Lang NP. The microbiota of osseointegrated implants in patients with a history of periodontal disease. *J Clin Periodontol* 1995;22:124-30.
[PUBMED](#) | [CROSSREF](#)
6. Amano A, Nakagawa I, Kataoka K, Morisaki I, Hamada S. Distribution of Porphyromonas gingivalis strains with *fimA* genotypes in periodontitis patients. *J Clin Microbiol* 1999;37:1426-30.
[PUBMED](#)
7. Salcetti JM, Moriarty JD, Cooper LF, Smith FW, Collins JG, Socransky SS, et al. The clinical, microbial, and host response characteristics of the failing implant. *Int J Oral Maxillofac Implants* 1997;12:32-42.
[PUBMED](#)
8. Rutar A, Lang NP, Buser D, Bürgin W, Mombelli A. Retrospective assessment of clinical and microbiological factors affecting periimplant tissue conditions. *Clin Oral Implants Res* 2001;12:189-95.
[PUBMED](#) | [CROSSREF](#)
9. Botero JE, González AM, Mercado RA, Olave G, Contreras A. Subgingival microbiota in peri-implant mucosa lesions and adjacent teeth in partially edentulous patients. *J Periodontol* 2005;76:1490-5.
[PUBMED](#) | [CROSSREF](#)
10. Amano A. Molecular interaction of Porphyromonas gingivalis with host cells: implication for the microbial pathogenesis of periodontal disease. *J Periodontol* 2003;74:90-6.
[PUBMED](#) | [CROSSREF](#)
11. Imamura T. The role of gingipains in the pathogenesis of periodontal disease. *J Periodontol* 2003;74:111-8.
[PUBMED](#) | [CROSSREF](#)
12. Amano A, Sojar HT, Lee JY, Sharma A, Levine MJ, Genco RJ. Salivary receptors for recombinant fimbriin of Porphyromonas gingivalis. *Infect Immun* 1994;62:3372-80.
[PUBMED](#)

13. Nakagawa I, Amano A, Kuboniwa M, Nakamura T, Kawabata S, Hamada S. Functional differences among FimA variants of *Porphyromonas gingivalis* and their effects on adhesion to and invasion of human epithelial cells. *Infect Immun* 2002;70:277-85.
[PUBMED](#) | [CROSSREF](#)
14. Enersen M, Nakano K, Amano A. *Porphyromonas gingivalis* fimbriae. *J Oral Microbiol* 2013;5.
[PUBMED](#) | [CROSSREF](#)
15. Hamada N, Watanabe K, Arai M, Hiramane H, Umemoto T. Cytokine production induced by a 67-kDa fimbrial protein from *Porphyromonas gingivalis*. *Oral Microbiol Immunol* 2002;17:197-200.
[PUBMED](#) | [CROSSREF](#)
16. Lee JY, Sojar HT, Bedi GS, Genco RJ. *Porphyromonas* (*Bacteroides*) *gingivalis* fimbriin: size, amino-terminal sequence, and antigenic heterogeneity. *Infect Immun* 1991;59:383-9.
[PUBMED](#)
17. Nakagawa I, Amano A, Ohara-Nemoto Y, Endoh N, Morisaki I, Kimura S, et al. Identification of a new variant of fimA gene of *Porphyromonas gingivalis* and its distribution in adults and disabled populations with periodontitis. *J Periodontal Res* 2002;37:425-32.
[PUBMED](#) | [CROSSREF](#)
18. Umeda JE, Missailidis C, Longo PL, Anzai D, Wikström M, Mayer MP. Adhesion and invasion to epithelial cells by fimA genotypes of *Porphyromonas gingivalis*. *Oral Microbiol Immunol* 2006;21:415-9.
[PUBMED](#) | [CROSSREF](#)
19. Amano A, Kuboniwa M, Nakagawa I, Akiyama S, Morisaki I, Hamada S. Prevalence of specific genotypes of *Porphyromonas gingivalis* fimA and periodontal health status. *J Dent Res* 2000;79:1664-8.
[PUBMED](#) | [CROSSREF](#)
20. Nagano K, Abiko Y, Yoshida Y, Yoshimura F. Genetic and antigenic analyses of *Porphyromonas gingivalis* FimA fimbriae. *Mol Oral Microbiol* 2013;28:392-403.
[PUBMED](#) | [CROSSREF](#)
21. Shin SI, Kwon YH, Park JB, Herr Y, Chung JH. Prevalence of fimA Genotypes of *Porphyromonas gingivalis* Strains in peri-implantitis patients. *J Korean Acad Periodontol* 2005;35:31-41.
[CROSSREF](#)
22. Seo DK, Kwon YH, Park JB, Herr Y, Chung JH. Prevalence of fimA Genotypes of *Porphyromonas gingivalis* Strains in peri-implant sulcus. *J Korean Acad Periodontol* 2005;35:907-19.
[CROSSREF](#)
23. Enersen M, Olsen I, Kvalheim Ø, Caugant DA. fimA genotypes and multilocus sequence types of *Porphyromonas gingivalis* from patients with periodontitis. *J Clin Microbiol* 2008;46:31-42.
[PUBMED](#) | [CROSSREF](#)
24. Moon JH, Shin SI, Chung JH, Lee SW, Amano A, Lee JY. Development and evaluation of new primers for PCR-based identification of type II fimA of *Porphyromonas gingivalis*. *FEMS Immunol Med Microbiol* 2011;64:425-8.
[PUBMED](#) | [CROSSREF](#)
25. Cohen J. A power primer. *Psychol Bull* 1992;112:155-9.
[PUBMED](#) | [CROSSREF](#)
26. Moon JH, Herr Y, Lee HW, Shin SI, Kim C, Amano A, et al. Genotype analysis of *Porphyromonas gingivalis* fimA in Korean adults using new primers. *J Med Microbiol* 2013;62:1290-4.
[PUBMED](#) | [CROSSREF](#)
27. Zhao L, Wu YF, Meng S, Yang H, OuYang YL, Zhou XD. Prevalence of fimA genotypes of *Porphyromonas gingivalis* and periodontal health status in Chinese adults. *J Periodontal Res* 2007;42:511-7.
[PUBMED](#) | [CROSSREF](#)
28. Missailidis CG, Umeda JE, Ota-Tsuzuki C, Anzai D, Mayer MP. Distribution of fimA genotypes of *Porphyromonas gingivalis* in subjects with various periodontal conditions. *Oral Microbiol Immunol* 2004;19:224-9.
[PUBMED](#) | [CROSSREF](#)
29. Puig-Silla M, Dasí-Fernández F, Montiel-Company JM, Almerich-Silla JM. Prevalence of fimA genotypes of *Porphyromonas gingivalis* and other periodontal bacteria in a Spanish population with chronic periodontitis. *Med Oral Patol Oral Cir Bucal* 2012;17:e1047-53.
[PUBMED](#) | [CROSSREF](#)
30. Nakano K, Kuboniwa M, Nakagawa I, Yamamura T, Nomura R, Okahashi N, et al. Comparison of inflammatory changes caused by *Porphyromonas gingivalis* with distinct fimA genotypes in a mouse abscess model. *Oral Microbiol Immunol* 2004;19:205-9.
[PUBMED](#) | [CROSSREF](#)

31. Subramani K, Jung RE, Molenberg A, Hammerle CH. Biofilm on dental implants: a review of the literature. *Int J Oral Maxillofac Implants* 2009;24:616-26.
[PUBMED](#)
32. Koyanagi T, Sakamoto M, Takeuchi Y, Ohkuma M, Izumi Y. Analysis of microbiota associated with peri-implantitis using 16S rRNA gene clone library. *J Oral Microbiol* 2010;2.
[PUBMED](#) | [CROSSREF](#)
33. Laine ML, van Winkelhoff AJ. Virulence of six capsular serotypes of *Porphyromonas gingivalis* in a mouse model. *Oral Microbiol Immunol* 1998;13:322-5.
[PUBMED](#) | [CROSSREF](#)
34. Rylev M, Kilian M. Prevalence and distribution of principal periodontal pathogens worldwide. *J Clin Periodontol* 2008;35 Suppl:346-61.
[PUBMED](#) | [CROSSREF](#)
35. van der Ploeg JR, Giertsen E, Lüdin B, Mörgeli C, Zinkernagel AS, Gmür R. Quantitative detection of *Porphyromonas gingivalis* *fimA* genotypes in dental plaque. *FEMS Microbiol Lett* 2004;232:31-7.
[PUBMED](#) | [CROSSREF](#)
36. Beikler T, Peters U, Prajaneh S, Prior K, Ehmke B, Flemmig TF. Prevalence of *Porphyromonas gingivalis* *fimA* genotypes in Caucasians. *Eur J Oral Sci* 2003;111:390-4.
[PUBMED](#) | [CROSSREF](#)
37. Hayashi F, Okada M, Oda Y, Kojima T, Kozai K. Prevalence of *Porphyromonas gingivalis* *fimA* genotypes in Japanese children. *J Oral Sci* 2012;54:77-83.
[PUBMED](#) | [CROSSREF](#)
38. Perez-Chaparro PJ, Rouillon A, Minet J, Lafaurie GI, Bonneure-Mallet M. *fimA* genotypes and PFGE profile patterns in *Porphyromonas gingivalis* isolates from subjects with periodontitis. *Oral Microbiol Immunol* 2009;24:423-6.
[PUBMED](#) | [CROSSREF](#)
39. Tamura K, Nakano K, Nomura R, Miyake S, Nakagawa I, Amano A, et al. Distribution of *Porphyromonas gingivalis* *fimA* genotypes in Japanese children and adolescents. *J Periodontol* 2005;76:674-9.
[PUBMED](#) | [CROSSREF](#)
40. Nakagawa I, Amano A, Kimura RK, Nakamura T, Kawabata S, Hamada S. Distribution and molecular characterization of *Porphyromonas gingivalis* carrying a new type of *fimA* gene. *J Clin Microbiol* 2000;38:1909-14.
[PUBMED](#)