

RESEARCH

Open Access



Diagnostic performances of leucine-rich α -2-glycoprotein 1 and stem cell factor for diagnosis and follow-up of colorectal cancer

Manar S. Fouda¹, Rokaia M. Aljarwani¹, Khaled Aboul-Enein² and Mohamed M. Omran^{1*} 

Abstract

Background: Colorectal cancer (CRC) is one of the most frequently diagnosed tumors worldwide with high mortality and morbidity. There is an urgent need for biomarkers to improve the outcomes and early detection of CRC. The sensitivity of traditional CRC tumor markers (carcinoembryonic antigen (CEA) and carbohydrate antigen 19-9 (CA19-9)) is not ideal. The levels of leucine-rich- α -2-glycoprotein 1 (LRG1) and stem cell factor (SCF) were evaluated, but the combined value of both markers is unclear. This case-control study included four groups: CRC patients before treatments ($n = 22$), CRC patients after treatments ($n = 26$), 20 patients with benign tumor, and 20 healthy subjects. Levels of routine biochemical and hematological markers, traditional tumor markers (CA19.9 and CEA), and candidate markers (LRG1 and SCF) were determined. Univariate and multivariate logistic regression analysis and area receiver-operating characteristic analysis (ROC) were used for evaluation the diagnostic performances of single and combined markers.

Results: No significance difference in traditional tumor markers CEA, CA 19.9, and neutrophil-lymphocyte ratio (NLR) were found among study groups. SCF, LRG1, and platelet-lymphocyte ratio (PLR) were significantly decreased ($p < 0.05$) in non-treated CRC patients than after treated CRC. The combination between SCF and LRG1 showed highly significant difference in CRC patients compared with benign, healthy subjects, and among CRC groups (treated and non-treated) ($p < 0.0001$). The highest areas under curve (AUCs) were observed when LRG1 was used as a single predictor for discriminating CRC from healthy (0.87), benign (0.84), and non-treated CRC vs treated CRC (0.82). AUCs were jumped to 0.90, 0.84, and 0.84 when LRG1 and SCF were combined.

Conclusion: Our study revealed that LRG1 and SCF were potential diagnostic and follow-up markers for CRC.

* Correspondence: drmmomran@science.helwan.edu.eg;
drmmomran@yahoo.com

¹Chemistry Department, Faculty of Science, Helwan University, Ain Helwan,
Cairo 11795, Egypt

Full list of author information is available at the end of the article



© The Author(s). 2021 **Open Access** This article is licensed under a Creative Commons Attribution 4.0 International License, which permits use, sharing, adaptation, distribution and reproduction in any medium or format, as long as you give appropriate credit to the original author(s) and the source, provide a link to the Creative Commons licence, and indicate if changes were made. The images or other third party material in this article are included in the article's Creative Commons licence, unless indicated otherwise in a credit line to the material. If material is not included in the article's Creative Commons licence and your intended use is not permitted by statutory regulation or exceeds the permitted use, you will need to obtain permission directly from the copyright holder. To view a copy of this licence, visit <http://creativecommons.org/licenses/by/4.0/>.

Impact statement

Colorectal cancer is a major health problem worldwide. The current work aimed to evaluate the diagnostic performances of CEA, CA19-9, LRG1, and SCF as single and combined markers.

Background

Worldwide, CRC is the third most commonly detected cancer, and being generally symptomatic, it is often detected in advanced stage of growth [1]. The most reliable method for the CRC screening is endoscope, but it physically burdens and has high cost. Thus, alternative, noninvasive markers have been evaluated and validated to improve early detection and treatment outcome of CRC [2]. In addition, the blood examinations are accessible and easily performed, but the precision to detect the CRC in early stages is restricted. The routine tumor markers (CEA and CA 19–9) are raised in malignancies and benign diseases and have unsatisfactory sensitivity and specificity [3]. LRG is a plasma glycoprotein elevated in the acute-phase response to bacterial or viral infection [4, 5]. LRG1 has several biological functions including cell migration, cell proliferation, cell apoptosis, immune response and neovascularization, and malignancy [5, 6]. Stem cell factor is one of the hematopoietic cytokines (HC) which induce hematopoietic progenitor cell proliferation. Receptor of HC has been established on non-hematopoietic cancer cell lines including CRC [7]. Clinical prospective studies open the door for non-invasive biomarkers which assist in monitoring therapy for CRC patients. CEA levels should be detected before starting in chemotherapy and every 2 to 3 months [8]. In our study, we aimed to evaluate diagnostic performances of traditional CRC tumor markers (CEA, CA19.9) vs LRG1 and SCF for early CRC diagnosis and assess its potential usefulness for monitoring CRC patient's treatment.

Methods

Patients

Sixty-eight patients were recruited from Egyptian National Cancer institute. Patients were divided into four groups: CRC patients before treatments ($n = 22$), CRC patients after treatments ($n = 26$) with histologically affirmed adenocarcinoma of colon or rectum cancer, 20 patients with benign tumor (includes hyperplastic or adenomatous polyps), and 20 healthy subjects. Treatment strategies included chemotherapy, radiotherapy, concurrent chemo and/or radiotherapy, or surgery. Clinical data of patients including age, sex, tumor histology, stage, and treatment strategies were collected from medical records. Pretreatment staging included the following: physical and blood examinations (CEA, CA 19.9, NLR and PLR), computed tomography (CT), chest roentgenogram, abdominal

ultrasound scanning, and colonoscopy. TNM (tumor, node, and metastasis) classification system for colorectal cancer was utilized to play out the pathological staging of the study [9].

Biochemical analyses

Blood samples were assembled from all individuals after clinical determination and blood samples were inspected for routine laboratory examinations, including biochemical profile [liver function tests] and [kidney function tests] using an automated biochemistry analyzer (Beckman Coulter AU680 chemistry analyzer, USA). Complete blood count was estimated using an automated hematology analyzer (Sysmex XN 1000, Japan). Serum CA19.9 and CEA were estimated by ELISA assay according to the manufacturer's protocol (ARCHITECT i 1000 SR immunoassay analyzer, Abbott USA). LRG1 (Assay Pro/Human LRG1, MO, USA) and SCF (Glory Science Co. Ltd/Human SCF/Del Rio, TX, USA) were determined by immunoassay according to the manufacturer's protocol.

Statistical analyses

Statistical Package for the Social Sciences (SPSS) operating system, version 22.0 (SPSS Inc., Chicago, IL), was utilized to operate the statistical analysis information. Continuous data was presented as mean \pm standard deviation (SD). Statistically significant differences were determined using Kruskal-Wallis, ANOVA, Mann-Whitney U test, and Student's t test. Univariate and multivariate logistic regression analysis and AUC were used for evaluation the diagnostic performances of routine and candidate tumor markers. Platelet count-to-lymphocyte ratio (PLR) was calculated as the platelet count divided by the lymphocyte count. Neutrophil-to-lymphocyte ratio (NLR) was calculated as the neutrophil count divided by the lymphocyte count. The best cutoff points and diagnostic performances were determined based on receiver-operating characteristic analysis (ROC). The best combination was developed using the logistic regression function that combined the most discriminatory independent factors. The combination can be represented as $= (1.445 + \text{LRG} (\mu\text{g/ml}) \times 0.038 + \text{SCF} (\text{ng/ml}) \times 0.001)$.

Results

Baseline clinical features of study groups

Baseline clinical features are listed in Table 1; 48 patients (24 men and 24 women) with diagnosis of CRC including 22 non-treated CRC and 26 treated CRC, 20 with benign (13 men and 7 women), and 20 healthy subjects (14 men and 6 women) were enrolled into this study. Levels of routine laboratory parameters show non-significant difference between CRC and benign compared with healthy subjects.

Table 1 Clinicopathologic parameters of patients with colorectal cancer and control characteristics

Parameters	Value (%)
Cancer patients no.	
No. of patients	48
Treated CRC	26 (54.2%)
Non-treated CRC	22 (45.8%)
Mean age, years (range)	48 (28-81)
Cancer position, no.	
Colon	28 (58.3%)
Rectal	20 (41.7%)
Tumor size	
T1	7 (14.6%)
T2	19 (39.6%)
T3	10 (20.8%)
Unknown	12 (25%)
Tumor grade, no.	
G1	2 (4.2%)
G2	26 (54.2%)
G3	9 (18.7%)
Unknown	11 (22.9%)
Lymph node status, no.	
Positive	6 (12.5%)
Negative	30 (62.5%)
Unknown	12 (25%)
Metastasis	
Positive	3 (6.25%)
Negative	33 (68.75%)
Unknown	12 (25%)
Stage, no.	
I	23 (47.9%)
II	7 (14.6%)
III	3 (6.25%)
IV	3 (6.25%)
Unknown	12 (25%)
Benign cancer diseases	
No. of patients	20
Mean age, years (range)	51 (27-73)
Healthy controls	
No. of cases	20
Mean age, years	34 (23-61)

Levels of biomarkers in study groups

The levels of CEA, CA19.9, PLR, and SCF and LRG1 in benign patients, CRC (treated and non-treated), and healthy subjects are shown in Table 2. The levels of SCF and LRG1 were significantly increased in patients with

CRC than in benign ($p = 0.001$) and healthy subjects ($p = 0.001$). No significant difference in traditional markers CEA, CA19.9, and PLR among study groups. SCF, LRG1, and PLR were significantly decreased (p values ranged from 0.014 to 0.001) in non-treated CRC patients than treated CRC. The combination between SCF and LRG1 showed highly significant difference in CRC compared with benign and healthy subjects and among CRC groups (treated and non-treated) (p value ranged from 0.001 to < 0.0001).

Colon cancer patients had significant high level of SCF compared with rectum cancer ($p = 0.039$) whereas LRG1 levels were significantly elevated in high grade G3 than low grade of CRC ($p = 0.05$). Level of SCF was highly significantly higher in high depth T3 than T2 and T1 ($p = 0.001$), while LRG1 level was significantly higher in T1 than high depth ($p = 0.032$). Levels of CEA, CA19.9, PLR, SCF, and LRG1 had non-significant difference in lymph nodes and presence or absence of metastasis in CRC patients and early or late tumor stage ($p \geq 0.05$).

The diagnostic power of single and combined markers

ROC analysis was performed to evaluate the discriminatory power of single or combined markers to differentiate patients with CRC from benign and healthy individuals (Table 3). The highest discriminatory AUC was observed when LRG1 was used as a single marker with AUC value of 0.87 which jumped to 0.90 when LRG1 and SCF were combined in discriminating CRC from healthy subjects (Fig. 1a). LRG1 recorded the highest efficiency, specificity, positive prediction, and AUC value (66%, 95% and 96%, 0.84, respectively) as an individual marker for discriminating CRC from benign tumors, while AUC was not improved when LRG1 combined with SCF (Fig. 1b). LRG1 had an excellent ability to monitor the treatment (AUC = 0.82) with highest efficiency of 73%. Combined LRG1 and SCF increased AUC to 0.84 for discriminating treated CRC patients from non-treated (Fig. 1c).

Discussion

CRC is one of the main causes of death worldwide, so it is very imperative to early detect CRC. Levels of CEA and CA 19-9 were raised in malignancies and benign diseases and are not specific to malignancies only [10]. The sensitivity and specificity of traditional markers (CEA and CA 19-9) were limited in differentiation malignant from benign disease. We evaluated the diagnostic power of LRG1, SCF, PRL, CEA, and CA 19-9 for early detection of CRC. Our study was the first one that estimated the levels of SCF and LRG1 in CRC patients. Our results demonstrated that SCF and LRG1 levels were significantly increased in patients with CRC compared with benign tumors and healthy subjects. High level of LRG has been attended related to various diseases, such

Table 2 Levels of traditional and candidate markers in studied groups

Study groups	CEA (ng/ml)	CA19.9 (μ /ml)	PLR	SCF (ng/ml)	LRG1 (μ g/ml)	SCF-LRG1 (μ g/ml)
Healthy subjects	43.1 \pm 14.0	98.1 \pm 32.2	4.8 \pm 2.2	231.9 \pm 33.2	39.6 \pm 16.3	3.1 \pm 0.64
Benign	88.8 \pm 21.8	118.7 \pm 37.5	5.2 \pm 2.3	440.1 \pm 35.4	44.6 \pm 8.7	3.6 \pm 0.38
CRC	47.7 \pm 13.5	108.5 \pm 34.2	5.0 \pm 2.2	605.7 \pm 38.5	52.5 \pm 16.9	4.6 \pm 1.3
<i>p</i> value ^a	0.349	0.216	0.025	0.001	0.0001	0.0001
Non-treated CRC	40.1 \pm 33.7	155.9 \pm 49.3	6.2 \pm 2.1	1185.3 \pm 39.5	69.3 \pm 12.0	5.3 \pm 1.6
Treated CRC	26.0 \pm 22.2	68.6 \pm 48.3	4.2 \pm 1.9	530.2 \pm 39.1	54.2 \pm 13.2	4.0 \pm 0.59
<i>p</i> value ^b	0.978	0.167	0.014	0.019	0.001	0.001

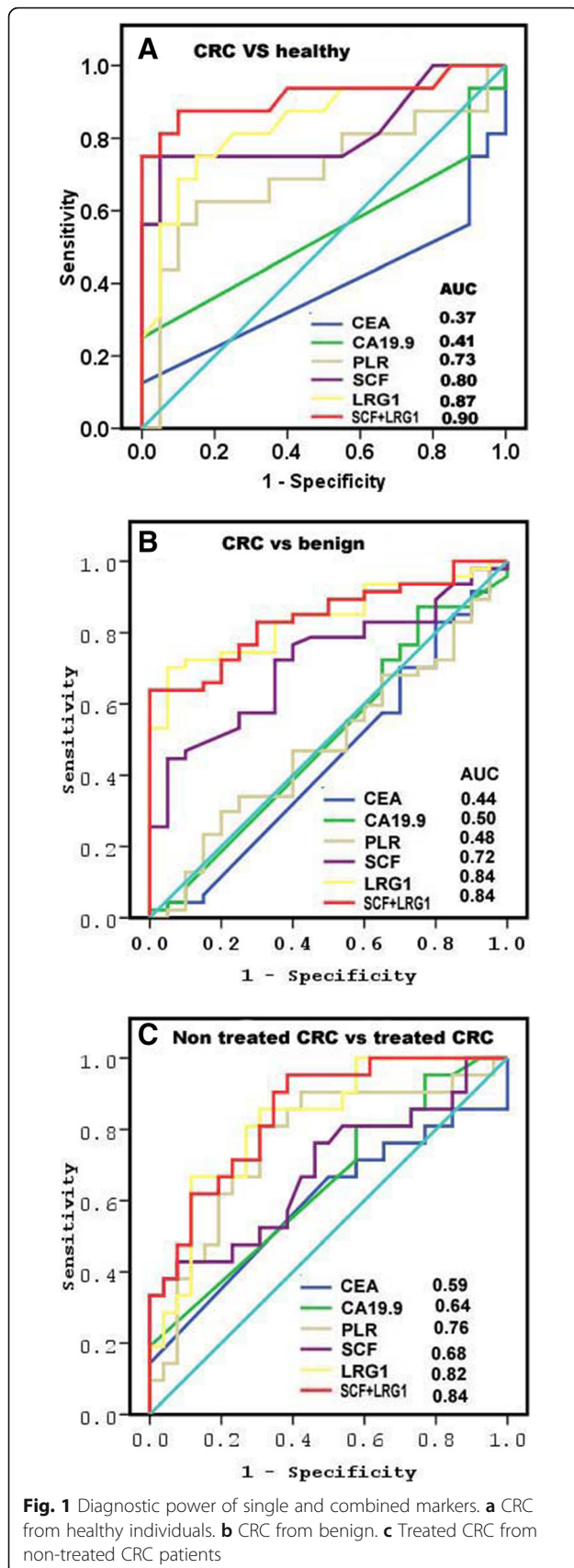
^aFor discriminating among studied groups^bFor discriminating between non-treated and treated CRC groups

as inflammation and cancer [11, 12]. LRG was informed to show critical roles in CRC tumorigenesis [13] and could be considered as a diagnostic tumor marker [14, 15]. Inflammation response is associated not only to tumorigenicity but also to tumor progression. Inflammatory response plays a dual role in tumorigenicity due to its induced local accumulation of different types of white blood cells that secrete cytokines to stimulate tumor angiogenesis and metastasis, and the rise of monocytes and lymphocytes counts creates a resistance to tumor invasion. Tumor progression is induced by the production of inflammatory cytokines and chemokines by white blood cells, which are themselves stimulated by the tumors [16].

Elevated level of several circulating cytokines was detected in patients with CRC and other malignancies diseases [17, 18]. In the present study, the SCF and LRG1 levels were significantly decreased in treated CRC patients than non-treated CRC patients, while the level of CEA and CA 19–9 had no significant difference in treated CRC compared with non-treated CRC individuals. During treatment of CRC, CEA and CA19-9 traditional tumor markers were undergoing dynamic changes [19, 20]. Our results disagreed with the results of Perez et al. [21]. The levels of CEA were decreased after CRC therapy. Our levels of LRG1 and SCF were correlated with clinicopathological characters and agreed

Table 3 Diagnostic performances of single and combined markers

Variables	AUC	Cut-off	Sensitivity (%)	Specificity (%)	PPV (%)	NPV (%)	Efficiency (%)
Healthy vs CRC							
CEA ng/ml	0.37	2.8	79	10	68	17	59
CA 19.9 μ /ml	0.41	23.4	77	10	67	15	57
PLR	0.73	4.9	47	65	76	34	52
SCF ng/ml	0.80	539	58	90	93	47%	63
LRG1 μ g/ml	0.87	60	52	90	93	44	68
SCF-LRG1	0.9	3.6	85	80	91	70	84
CRC vs Benign							
CEA ng/ml	0.44	2.8	79	20	70	29	62
CA 19.9 μ /ml	0.50	23.4	77	30	73	35	63
PLR	0.48	4.9	45	60	72	32	49
SCF ng/ml	0.72	539	58	70	82	41	61
LRG1 μ g/ml	0.84	60	54	95	96	46	66
SCF-LRG1	0.84	3.6	79	70	86	58	77
Treated CRC vs non-treated CRC							
CEA ng/ml	0.59	2.8	82	23	47	60	50
CA 19.9 μ /ml	0.64	23.4	82	27	49	64	52
PLR	0.76	4.55	71	69	65	75	70
SCF ng/ml	0.68	539	73	54	57	70	63
LRG1 μ g/ml	0.82	61.5	82	73	72	83	73
SCF-LRG1	0.84	3.6	77	70	68	78	77



with Kaminska et al. [22]. Increased hematopoietic cytokines correlated with clinicopathological features, and it may have diagnostic value [23].

In the present study, LRG1 has the highest discriminatory power as a single predictor for discriminating CRC from healthy subjects with an AUC value of 0.87, which jumped to 0.90 when SCF and LRG1 were combined. For discriminating patients with CRC from benign, LRG1 has the highest AUC of 0.84 which improved to 0.89 when LRG1 and SCF combined. LRG1 had a great ability to monitor the treatment of CRC with an AUC value = 0.82. Combination of different biomarkers may enhance the diagnostic power and would be used for diagnosis of cancers. The specificity, sensitivity, and AUC of combined CEA and LRG-FT were higher than each marker alone [22]. The AUC of SCF was higher than the IL-3 but less than the AUCs of CEA and CA 19–9 [24]. Mroczko et al. [18] reported that combination of SCF with granulocyte-macrophage colony-stimulating factor (GM-CSF) had greatest diagnostic sensitivity, but GM-CSF and CEA combination had the highest specificity and positive and the negative predictive values. The AUC for osteopontin (OPN), B7-H4, tissue polypeptide-specific antigen, and TPS were 0.81, 0.86, 0.83, and 0.81, respectively. The sensitivity and specificity of B7-H4 for discriminating CRC patients from healthy controls were 88.2% and 86.7%, respectively. However, combination of CEA and B7-H4 had AUC with 0.93, 80% specificity, and 99% sensitivity to differentiate between CRP patients and healthy controls [25]. AUC of miR-125a-3p was 0.69 and 0.84 for CEA for differentiating CRC patients from healthy. Combined CEA and miR-125a-3P enhanced the AUC to 0.86% [26]. AUC of CEA was 0.86 followed by CA 19–9, CYFRA 21-1, IL-8, CA 125, and OPN reaching AUCs between 0.70 and 0.74. AUC of CEA and CA 19–9 increased to 0.89 [27]. This study had two limits. First, it included a small population size and the second limit was including cancer rectum with colon cancer. In the coming research papers, we will increase the population size and include cancer rectum as a separate disease group.

Conclusions

LRG1 had the highest AUC for discriminating patients with CRC from healthy and benign individuals and treated CRC from non-treated CRC. LRG1 combined with SCF could be considered a promising candidate marker for CRC diagnosis and follow-up.

Abbreviations

AUC: Area under the curve; CA19-9: Carbohydrate antigen 19-9; CEA: Carcinoembryonic antigen; CT: Computed tomography; CRC: Colorectal cancer; HC: Hematopoietic cytokines; GM-CSF: Granulocyte-macrophage colony-stimulating factor; LRG1: Leucine-rich-alpha-2-glycoprotein 1; OPN: Osteopontin; NLR: Neutrophil-lymphocyte ratio; NPV: Negative predictive value; PPV: Positive predictive value; PLR: Platelet-lymphocyte

ratio; ROC: Receiver-operating characteristic analysis; SCF: Stem cell factor; SD: Standard deviation; SPSS: Statistical Package for the Social Sciences; TNM: Tumor, node, and metastasis

Acknowledgements

Not applicable

Authors' contributions

OM, MF, and AK conceived and designed the experiments. OM, MF, and AM contributed to the analysis and/or interpretation of data. OM, MF, and AM drafted the manuscript. OM and MF revised it critically for important intellectual content. All authors have read the manuscript and approved the submission.

Funding

This research did not receive any specific grant from funding agencies in the public, commercial, or not-for-profit sectors.

Availability of data and materials

The authors declare that all generated and analyzed data are included in the article.

Ethics approval and consent to participate

The Ethics and Scientific Committees of the National Cancer Institute approved this study; the research approval code is 2018190314. Biochemical studies on biomarkers for colorectal cancer. Informed written consent was signed by all patients in compliance with the ethical guidelines of the 1975 Helsinki Declaration.

Consent for publication

Not applicable

Competing interests

The authors declare that they have no competing interests.

Author details

¹Chemistry Department, Faculty of Science, Helwan University, Ain Helwan, Cairo 11795, Egypt. ²Clinical Pathology Department, National Cancer Institute, Cairo University, Giza, Egypt.

Received: 25 June 2020 Accepted: 4 January 2021

Published online: 25 January 2021

References

- Araghi M, Soerjomataram I, Jenkins M, Brierley J, Morris E (2019) Global trends in colorectal cancer mortality: projections to the year 2035. *Int J Cancer* 144:2992–3000
- Attallah AM, El-Far M, Ibrahim AR, El-Desouky MA (2018) Clinical value of a diagnostic score for colon cancer based on serum CEA, CA19-9, cytokeratin-1 and mucin-1. *Br J Biomed Sci* 75:122–7
- Yiu AJ, Yiu CY (2016) Biomarkers in colorectal cancer. *Anticancer Res* 36:1093–1102
- Haupt H, Baudner S (1977) Isolation and characterization of an unknown, leucine-rich 3.1-S-alpha2-glycoprotein from human serum. *Hoppe-Seyler's Zeitschrift für physiologische Chemie* 358:639–646
- Wang X, Abraham S, McKenzie JAG, Jeffs N, Swire M, Tripathi VB et al (2013) LRG1 promotes angiogenesis by modulating endothelial TGF- β signalling. *Nature*. 499:306–311
- Zhong D, Zhao S, He G, Li J, Lang Y, Ye W et al (2015) Stable knockdown of LRG1 by RNA interference inhibits growth and promotes apoptosis of glioblastoma cells in vitro and in vivo. *Tumour Biol* 36:4271–4278
- Smith MA, Court EL, Smith JG (2001) Stem cell factor: laboratory and clinical aspects. *Blood Rev* 15:191–197
- Sturgeon CM, Duffy MJ, Stenman UH, Lilja H, Brüner N, Chan DW et al (2008) National Academy of Clinical Biochemistry laboratory medicine practice guidelines for use of tumor markers in testicular, prostate, colorectal, breast, and ovarian cancers. *Clin Chem* 54:e11–e79
- Siegel R, Desantis C, Jemal A (2014) Colorectal cancer statistics, 2014. *CA Cancer J Clin* 64:104–117
- Tong Y, Song Z, Zhu W (2013) Study of an elevated carbohydrate antigen 19-9 concentration in a large health check-up cohort in China. *Clin Chem Lab Med* 51:1459–1466
- Weivoda S, Andersen JD, Skogen A, Schlievert PM, Fontana D, Schacker T et al (2008) ELISA for human serum leucine-rich alpha-2-glycoprotein-1 employing cytochrome c as the capturing ligand. *J Immunol Methods* 336:22–29
- Andersen JD, Boylan KL, Jemerson R, Geller MA, Misemer B, Harrington KM et al (2010) Leucine-rich alpha-2-glycoprotein-1 is upregulated in sera and tumors of ovarian cancer patients. *J Ovarian Res* 3:21
- Choi JW, Liu H, Shin DH, Yu GI, Hwang JS, Kim ES et al (2013) Proteomic and cytokine plasma biomarkers for predicting progression from colorectal adenoma to carcinoma in human patients. *Proteomics* 13:2361–2374
- Wang CH, Li M, Liu LL, Zhou RY, Fu J, Zhang CZ et al (2015) LRG1 expression indicates unfavorable clinical outcome in hepatocellular carcinoma. *Oncotarget*. 6:42118–42129
- Zhang Y, Luo Q, Wang N, Hu F, Jin H, Ge T et al (2015) LRG1 suppresses the migration and invasion of hepatocellular carcinoma cells. *Med Oncol* 32:146
- Cao Y, Ke S, Gu J, Mao F, Yao S, Deng S, et al (2020) The Value of Haematological Parameters and Tumour Markers in the Prediction of Intestinal Obstruction in 1474 Chinese Colorectal Cancer Patients. *Dis markers* 2020:8860328
- Lahm H, Amstad P, Yilmaz A, Borbenyi Z, Wyniger J, Fischer JR et al (1995) Interleukin 4 down-regulates expression of c-kit and autocrine stem cell factor in human colorectal carcinoma cells. *Cell Growth Differentiation* 6:1111–1118
- Mroczo B, Szmitkowski M, Okulczyk B (2003) Hematopoietic growth factors in colorectal cancer patients. *Clin Chem Lab Med* 41:646–651
- Gronlund B, Høgdall C, Hilden J, Engelholm SA, Høgdall EV, Hansen HH (2004) Should CA-125 response criteria be preferred to response evaluation criteria in solid tumors (RECIST) for prognostication during second-line chemotherapy of ovarian carcinoma? *J Clin Oncol* 22:4051–4058
- Petrioli R, Licchetta A, Roviello G, Pascucci A, Francini E, Bargagli G et al (2012) CEA and CA19.9 as early predictors of progression in advanced/metastatic colorectal cancer patients receiving oxaliplatin-based chemotherapy and bevacizumab. *Cancer Invest* 30:65–71
- Perez RO, São Julião GP, Habr-Gama A, Kiss D, Proscuschim I, Campos FG et al (2009) The role of carcinoembryonic antigen in predicting response and survival to neoadjuvant chemoradiotherapy for distal rectal cancer. *Dis Colon Rectum* 52:1137–1143
- Shinozaki E, Tanabe K, Akiyoshi T, Tsuchida T, Miyazaki Y, Kojima N et al (2018) Serum leucine-rich alpha-2-glycoprotein-1 with fucosylated triantennary N-glycan: a novel colorectal cancer marker. *BMC Cancer* 18:406
- Kaminska J, Nowacki MP, Kowalska M, Rysinska A, Chwalinski M, Fuksiewicz M et al (2005) Clinical significance of serum cytokine measurements in untreated colorectal cancer patients: soluble tumor necrosis factor receptor type I—an independent prognostic factor. *Tumour Biol* 26:186–194
- Mroczo B, Szmitkowski M, Wereszczynska-Siemiatkowska U, Okulczyk B (2005) Stem cell factor (SCF) and interleukin 3 (IL-3) in the sera of patients with colorectal cancer. *Dig Dis Sci* 50:1019–1024
- Wang P, Li C, Zhang F, Ma X, Gai X (2018) Clinical Value of Combined Determination of Serum B7-H4 with Carcinoembryonic Antigen, Osteopontin, or Tissue Polypeptide-Specific Antigen for the Diagnosis of Colorectal Cancer. *Dis Markers* 2018:4310790
- Wang J, Yan F, Zhao Q, Zhan F, Wang R, Wang L et al (2017) Circulating exosomal miR-125a-3p as a novel biomarker for early-stage colon cancer. *Sci Rep* 7:4150
- Dressen K, Hermann N, Manekeller S, Walgenbach-Bruenagel G, Schildberg FA, Hettwer K et al (2017) Diagnostic performance of a novel multiplex immunoassay in colorectal cancer. *Anticancer Res* 37:2477–2486

Publisher's Note

Springer Nature remains neutral with regard to jurisdictional claims in published maps and institutional affiliations.