

Supplementary Online Content

Strassle PD, Kendrick P, Baumann MB, et al. Homicide rates across county, race, ethnicity, age, and sex in the US. *JAMA Netw Open*. 2025;8(2):e2462069.
doi:10.1001/jamanetworkopen.2024.62069

eFigure 1. Age-Standardized, County-Level Homicide Rates in 2019 by Race and Ethnicity, Sex, and Age

eFigure 2. Map of Age-Standardized, County-Level Homicide Rates in 2019 by Race and Ethnicity and Age, Males

eFigure 3. Map of Age-Standardized, County-Level Homicide Rates in 2019 by Race and Ethnicity and Age, Females

eFigure 4. Map of Age-Standardized, County-Level Changes in Homicide Rates From 2000 to 2019 by Race and Ethnicity and Age, Females

eFigure 5. Percentage of all Homicides That Were Firearm-Related in 2019, by Race and Ethnicity, Sex, and Age

eFigure 6. Age-Standardized, National Firearm-Related Homicide Rates in 2019, by Race and Ethnicity, Sex, and Age

eFigure 7. Map of Age-Standardized, County-Level Firearm-Related Homicide Rates in 2019 by Race and Ethnicity and Age, Males

eFigure 8. Map of Age-Standardized, County-Level Firearm-Related Homicide Rates in 2019 by Race and Ethnicity and Age, Females

eFigure 9. Changes in Age-Standardized, National Firearm-Related Homicide Rates From 2000 to 2019, by Race and Ethnicity, Age, and Sex

eFigure 10. Changes in Age-Standardized, County-Level, Firearm-Related Homicide Rates Between 2000 and 2019 Among Males, by Race and Ethnicity and Age

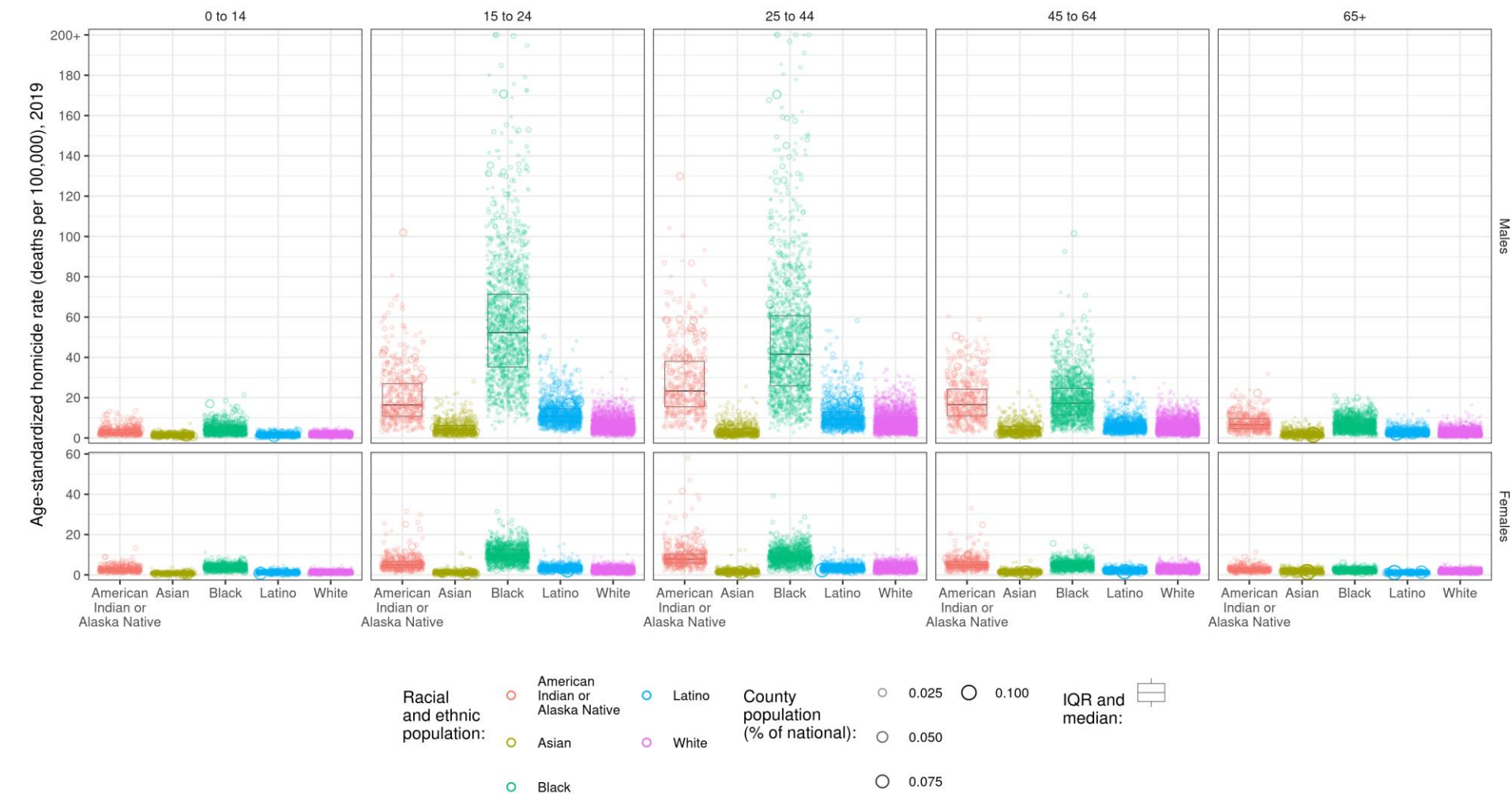
eFigure 11. Changes in Age-Standardized, County-Level, Firearm-Related Homicide Rates Between 2000 and 2019 Among Females, by Race and Ethnicity and Age

eTable 1. Counties With Age-Standardized, Homicide Rates Greater than 100 Per 100 000 Population in 2019 Among American Indian or Alaska Native Males Aged 15 to 44 Years and Black Males Aged 15 to 64 Years

eTable 2. Median Changes in Age-Standardized, County-Level Homicide Rates and the Proportion of Counties That Saw Increases and Decreases Between 2000 and 2019, by Race and Ethnicity, Sex, and Age

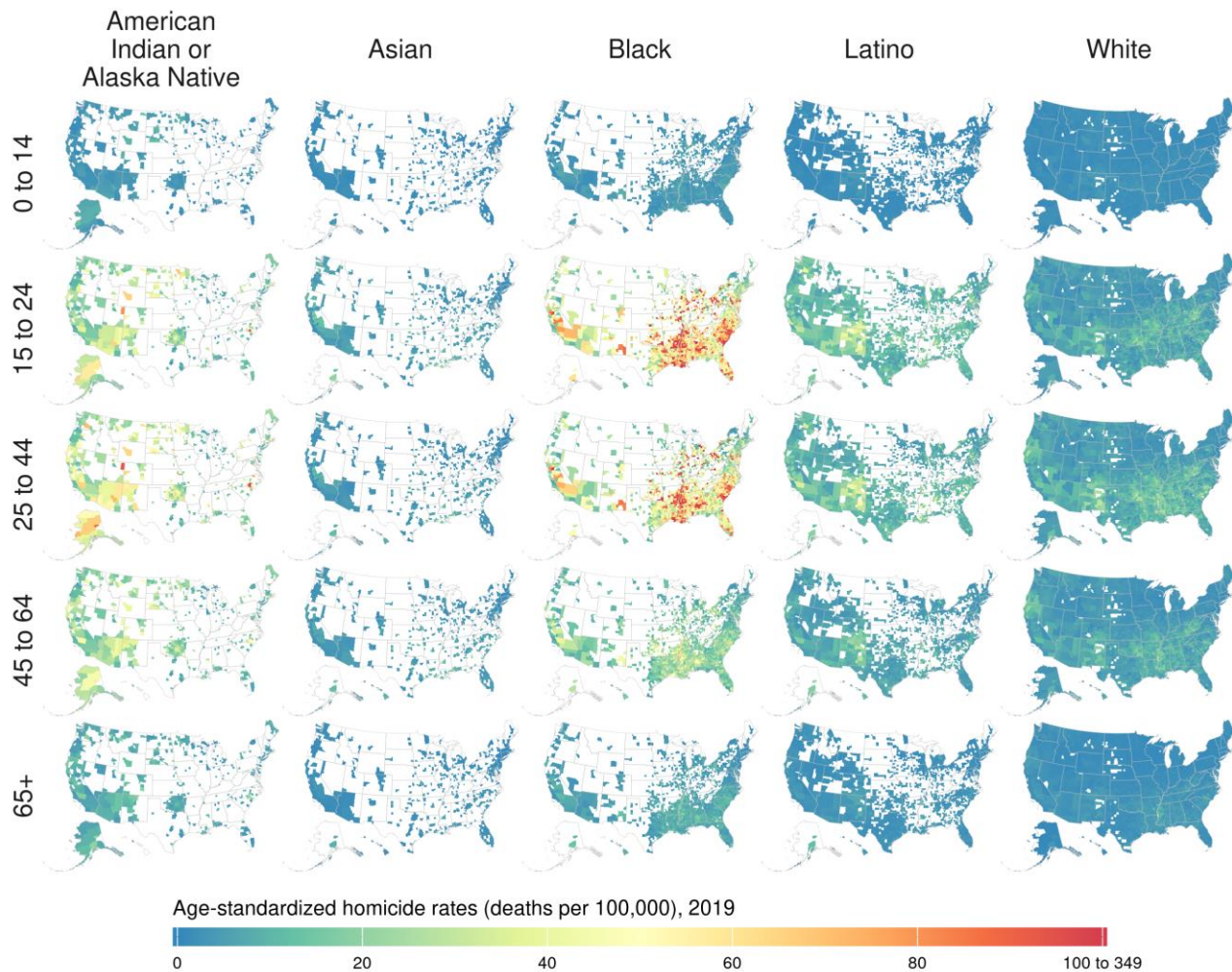
This supplementary material has been provided by the authors to give readers additional information about their work.

eFigure 1: Age-standardized, county-level homicide rates in 2019 by race and ethnicity, sex, and age.



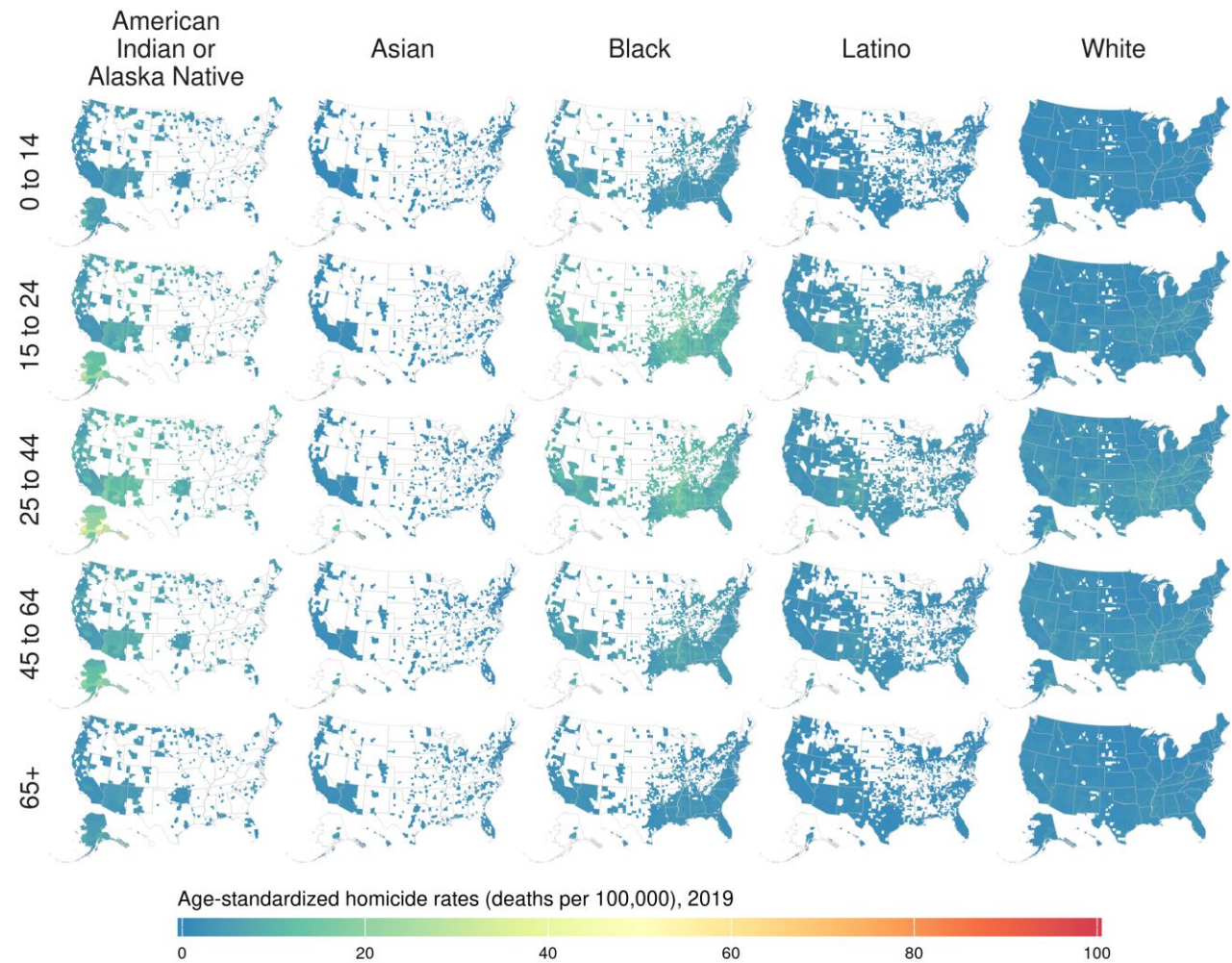
Box-and-whisker plot of county-level homicide rates in 2019 by race and ethnicity, sex, and age. Each circle represents one county in the United States. Estimates have been masked for counties with a mean annual population of <1000 people within a racial and ethnic population because model performance declined notably below this threshold. Mortality rates were capped at 200 deaths per 100,000.

eFigure 2: Map of age-standardized, county-level homicide rates in 2019 by race and ethnicity and age, males.



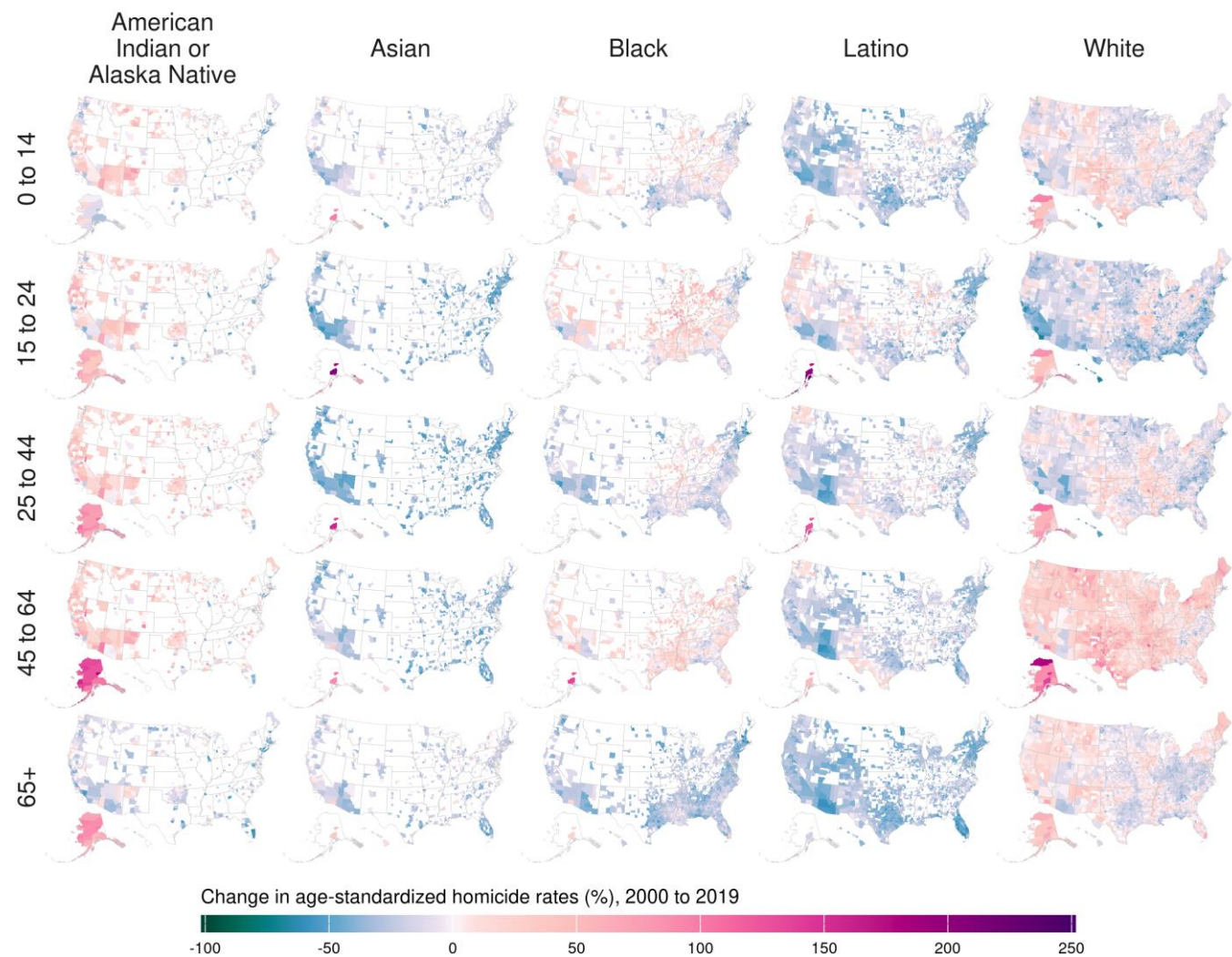
County-level homicide rates in 2019 among American Indian or Alaska Native, Asian, Black, Latino, and White males, by age. Estimates have been masked (shown in white) for counties with a mean annual population of <1000 people because model performance declined notably below this threshold

eFigure 3: Map of age-standardized, county-level homicide rates in 2019 by race and ethnicity and age, females.



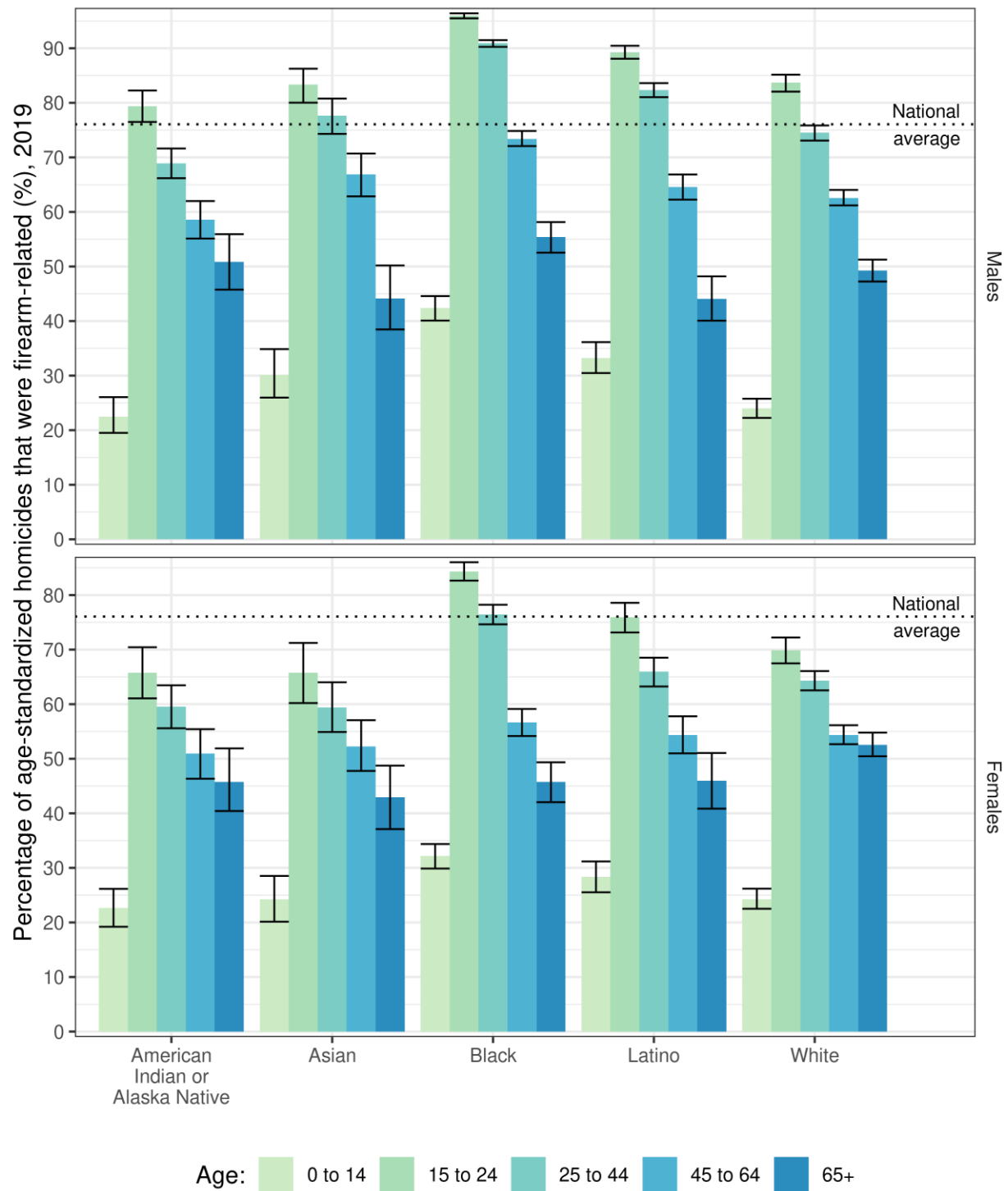
County-level homicide rates in 2019 among American Indian or Alaska Native, Asian, Black, Latino, and White females, by age. Estimates have been masked (shown in white) for counties with a mean annual population of <1000 people because model performance declined notably below this threshold

eFigure 4: Map of age-standardized, county-level changes in homicide rates from 2000 to 2019 by race and ethnicity and age, females.



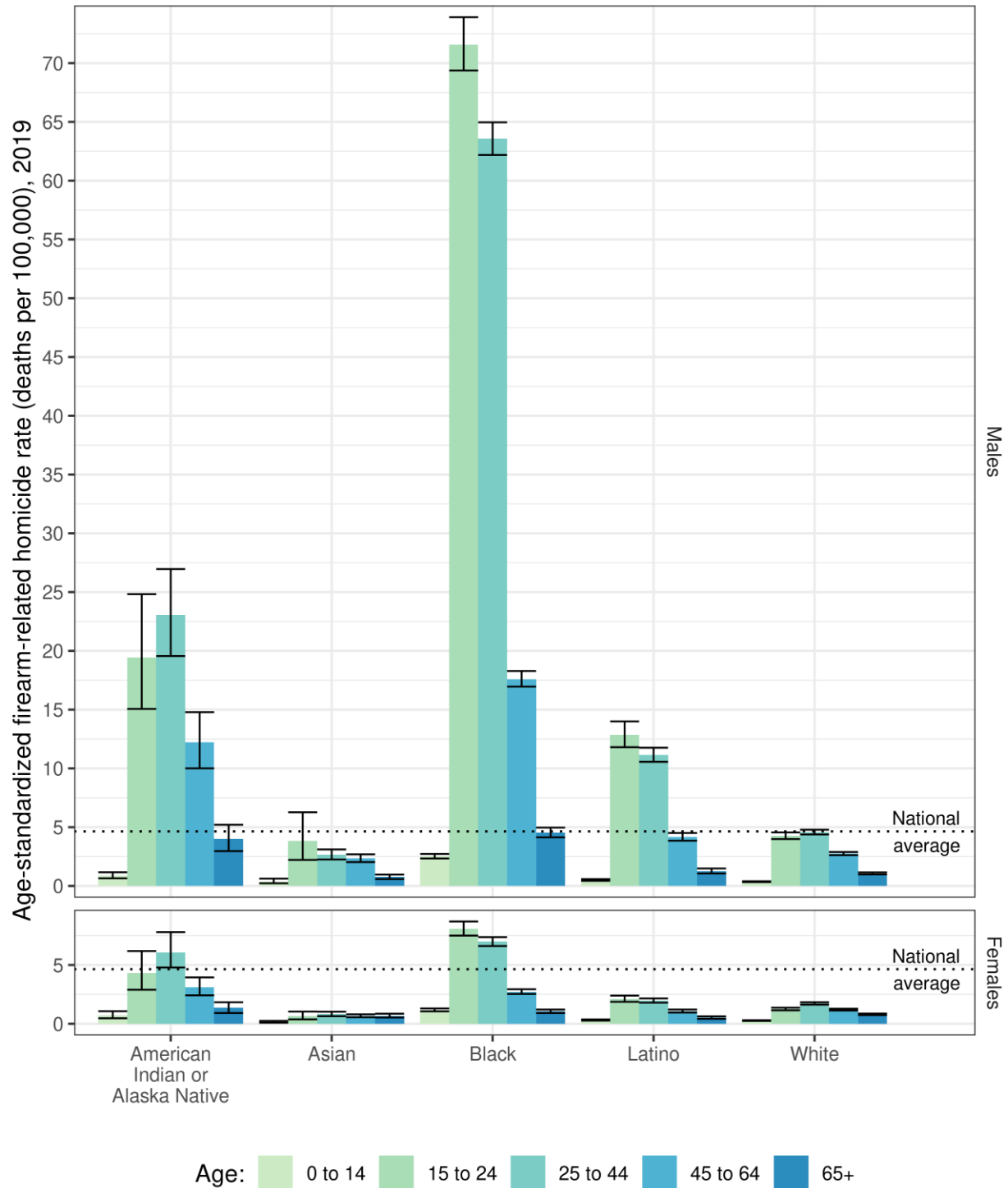
Changes in county-level homicide rates between 2000 and 2019 among females, by race and ethnicity and age. Estimates have been masked (shown in white) for counties with a mean annual population of <1000 people because model performance declined notably below this threshold.

eFigure 5: Percentage of all homicides that were firearm-related in 2019, by race and ethnicity, sex, and age.



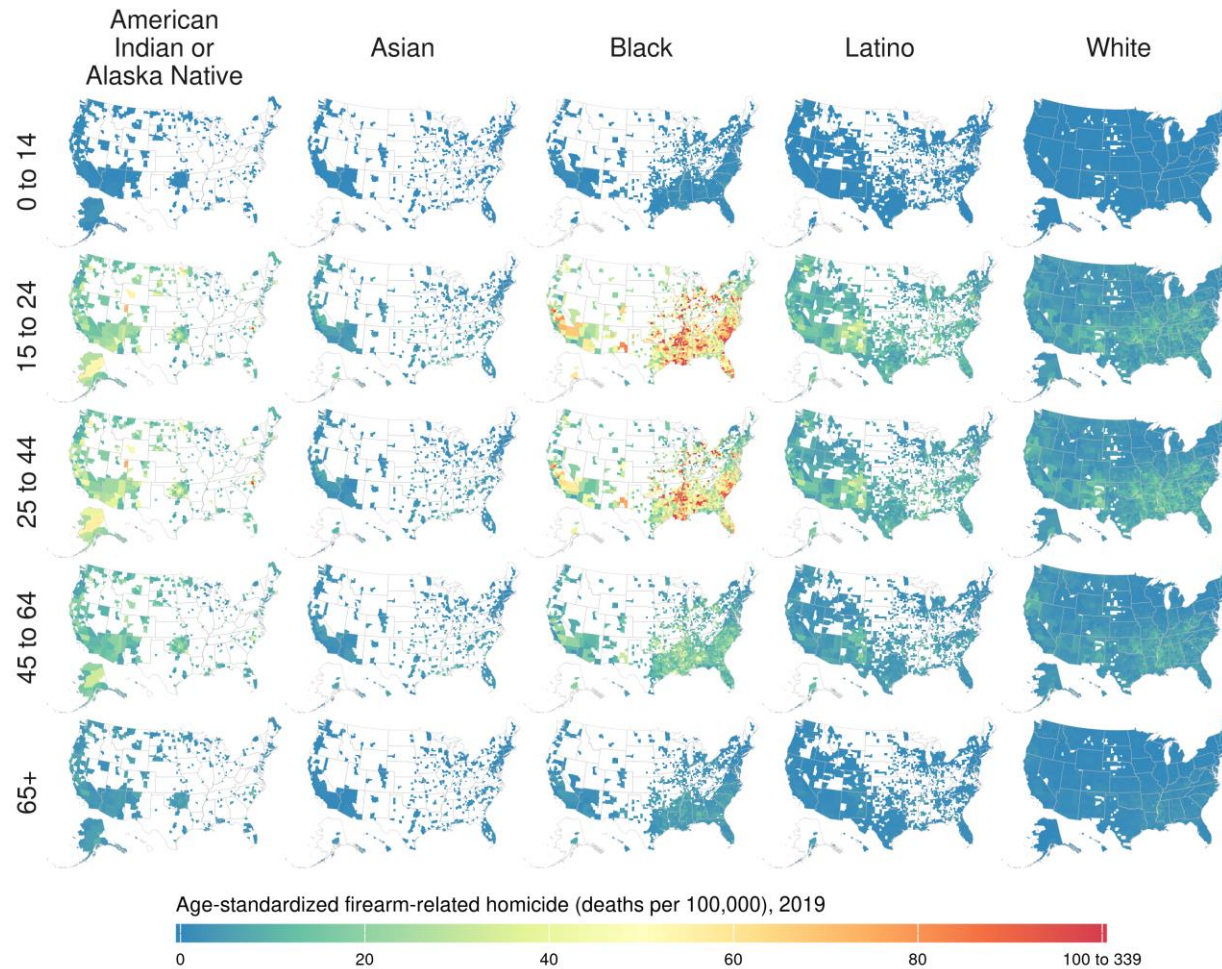
Percentage of all homicides that were firearm-related in 2019, by race and ethnicity, sex, and age. Bars represent the 95% uncertainty intervals.

eFigure 6: Age-standardized, national firearm-related homicide rates in 2019, by race and ethnicity, sex, and age.



National firearm-related homicide rates in 2019, by race and ethnicity, sex, and age. Bars represent the 95% uncertainty intervals.

eFigure 7: Map of age-standardized, county-level firearm-related homicide rates in 2019 by race and ethnicity and age, males.



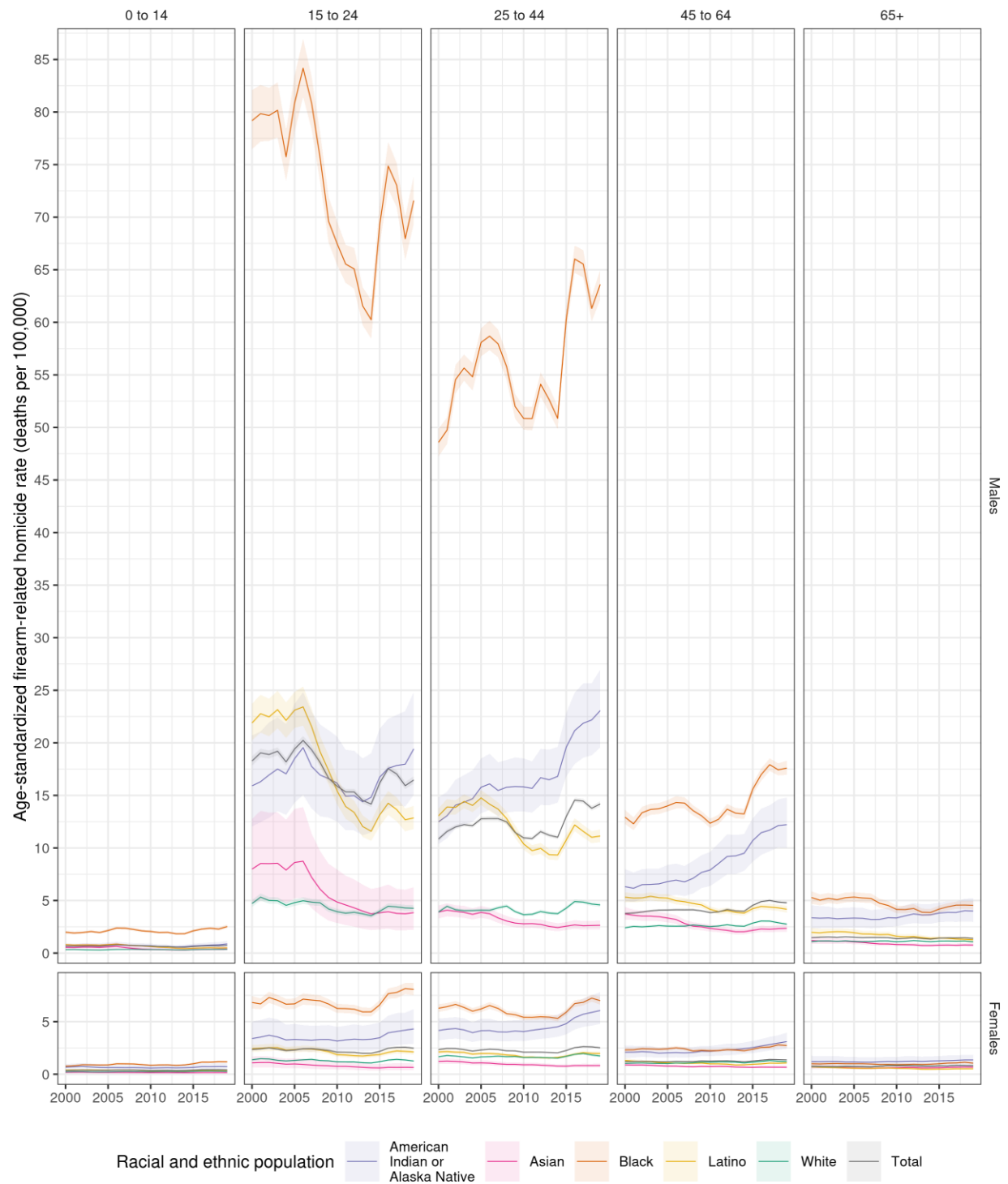
County-level firearm-related homicide rates in 2019 among American Indian or Alaska Native, Asian, Black, Latino, and White males, by age. Estimates have been masked (shown in white) for counties with a mean annual population of <1000 people because model performance declined notably below this threshold.

eFigure 8: Map of age-standardized, county-level firearm-related homicide rates in 2019 by race and ethnicity and age, females.



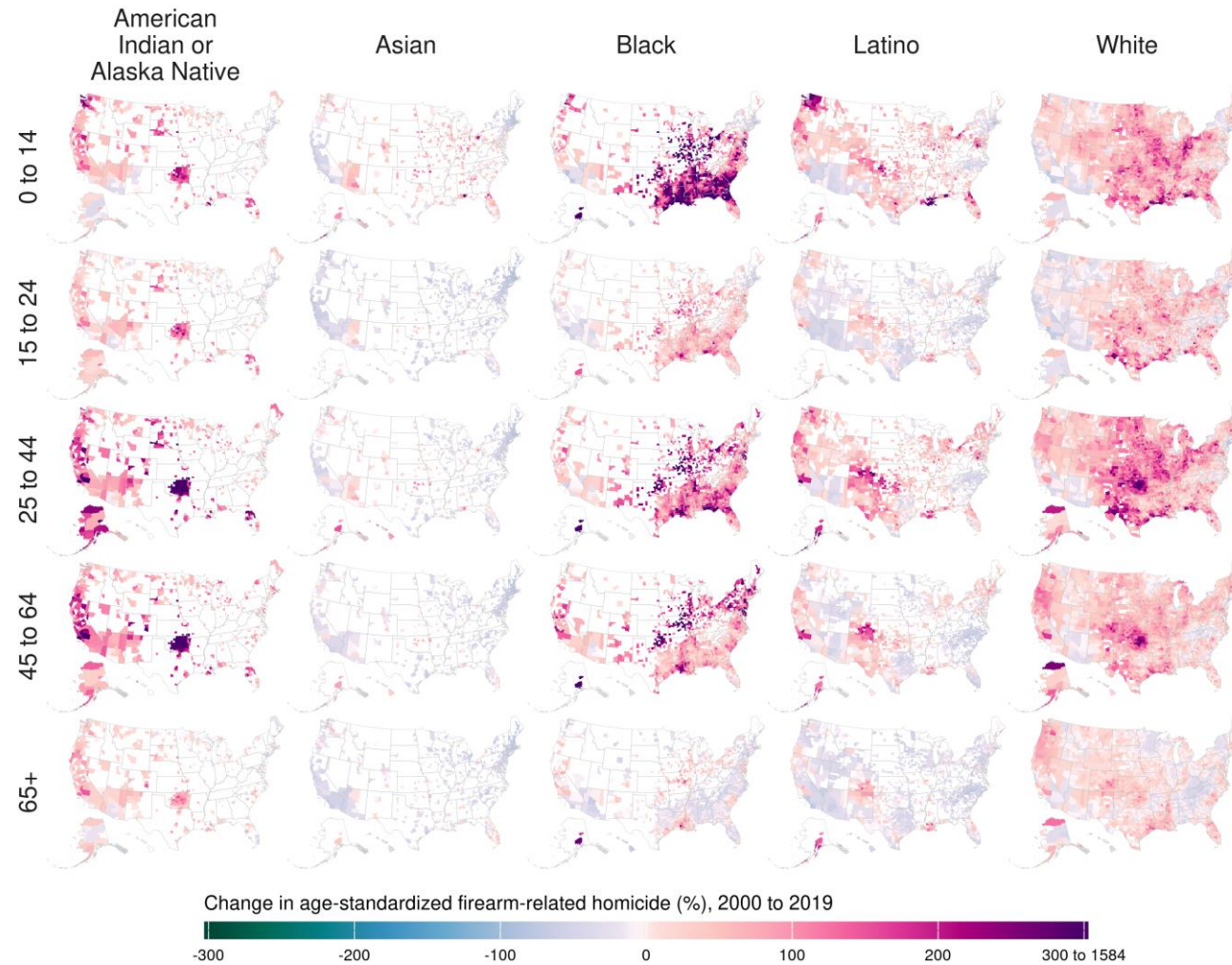
County-level firearm-related homicide rates in 2019 among American Indian or Alaska Native, Asian, Black, Latino, and White females, by age. Estimates have been masked (shown in white) for counties with a mean annual population of <1000 people because model performance declined notably below this threshold.

eFigure 9: Changes in age-standardized, national, firearm-related homicide rates from 2000 to 2019, by race and ethnicity, age, and sex.



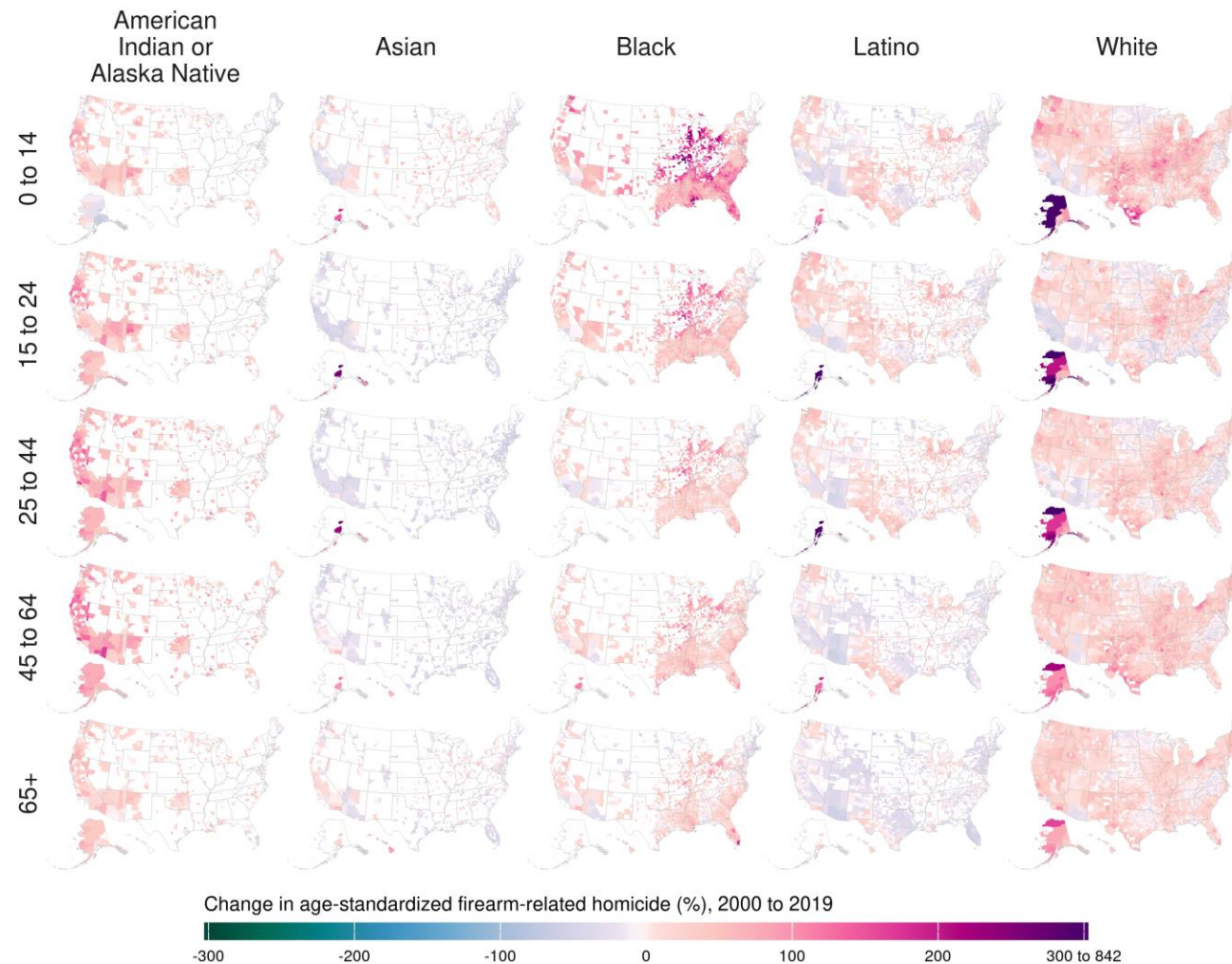
Changes in national, firearm-related homicide rates from 2000 to 2019, by race and ethnicity, age, and sex. Shaded areas indicate the 95% uncertainty intervals.

eFigure 10: Changes in age-standardized, county-level, firearm-related homicide rates between 2000 and 2019 among males, by race and ethnicity and age.



Changes in county-level, firearm-related homicide rates between 2000 and 2019 among males, by race and ethnicity and age. Estimates have been masked (shown in white) for counties with a mean annual population of <1000 people because model performance declined notably below this threshold.

eFigure 11: Changes in age-standardized, county-level, firearm-related homicide rates between 2000 and 2019 among females, by race and ethnicity and age.



Changes in county-level, firearm-related homicide rates between 2000 and 2019 among females, by race and ethnicity and age. Estimates have been masked (shown in white) for counties with a mean annual population of <1000 people because model performance declined notably below this threshold.

eTable 1: Counties with age-standardized homicide rates greater than 100 per 100 000 population in 2019 among 15-44-year-old American Indian or Alaska Native males and 15-64-year-old Black males.

County or combined county-unit	American Indian or Alaska Native males		Black males		
	15-24 Rate (95% UI) <i>Pop. size</i>	25-44 Rate (95% UI) <i>Pop. size</i>	15-24 Rate (95% UI) <i>Pop. size</i>	25-44 Rate (95% UI) <i>Pop. size</i>	45-64 Rate (95% UI) <i>Pop. size</i>
Alabama					
Butler County				111.2 (80.6-149.1) 1,011	
Dallas County			105.9 (84.8-130.6) 1,962	142.9 (115.1-177.3) 2,874	
Jefferson County			152.9 (139.4-166.8) 20,267	167.6 (151.3-184.1) 37,408	
Lowndes County				138.2 (103.8-183.9) 829	
Macon County			115.1 (93.2-140.8) 1,497	148.6 (117.3-186.8) 1,403	
Mobile County			100.1 (87.3-114.2) 11,192	112.5 (97.8-129.9) 19,056	
Arkansas					
Ashley County			104.8 (72.9-141.3) 318		
Bradley County			112.1 (74.6-157.7) 146		
Cleveland County			102.0 (63.1-155.6) 57		
Crittenden County			117.5 (98.3-138.2) 2,002	117.7 (94.4-143.6) 3,043	
Desha County			117.5 (84.2-157.4) 335	108.0 (76.2-149.3) 507	
Garland County			122.7 (91.4-159.4) 829	118.3 (81.7-161.4) 1,154	
Jefferson County			117.6 (99.7-137.5) 3,286	142.7 (118.7-169.2) 4,925	
Mississippi County			142.5 (117.1-169.7) 1,113	161.9 (127.7-198.7) 1,710	

	American Indian or Alaska Native males		Black males		
County or combined county-unit	15-24 Rate (95% UI) <i>Pop. size</i>	25-44 Rate (95% UI) <i>Pop. size</i>	15-24 Rate (95% UI) <i>Pop. size</i>	25-44 Rate (95% UI) <i>Pop. size</i>	45-64 Rate (95% UI) <i>Pop. size</i>
Phillips County			168.9 (137.0-205.2) 778	233.9 (184.8-285.8) 978	
Poinsett County			102.4 (63.4-153.7) 142		
District of Columbia			129.8 (119.3-141.5) 16,542	158.7 (144.2-174.4) 42,117	
Florida					
Duval County			116.3 (104.1-128.8) 21,823		
Manatee County			102.8 (80.5-126.0) 2,759		
Georgia					
Colquitt County			100.7 (77.0-129.5) 865		
Muscogee County			103.6 (88.3-120.4) 6,801		
Illinois					
Cook County			170.7 (161.5-180.2) 81,684	170.4 (161.5-179.5) 152,211	
Kankakee County			110.7 (85.9-138.8) 1,530		
Macon County			105.3 (84.5-127.8) 1,679		
Madison County			118.7 (96.2-142.7) 2,063	112.2 (86.1-138.9) 2,970	
Peoria County			138.0 (114.8-163.7) 2,976	143.0 (115.6-175.0) 4,209	
Saint Clair County			172.6 (151.7-194.2) 6,073	183.9 (160.4-209.2) 9,520	
Sangamon County			110.9 (89.5-134.0) 2,401		
Vermilion County			142.0 (113.1-174.1) 981	118.4 (91.3-147.0) 1,858	

	American Indian or Alaska Native males		Black males		
County or combined county-unit	15-24 Rate (95% UI) <i>Pop. size</i>	25-44 Rate (95% UI) <i>Pop. size</i>	15-24 Rate (95% UI) <i>Pop. size</i>	25-44 Rate (95% UI) <i>Pop. size</i>	45-64 Rate (95% UI) <i>Pop. size</i>
Winnebago County			146.9 (124.7-172.5) 3,377	116.4 (94.2-140.8) 5,116	
Indiana					
Allen County			179.0 (154.9-206.3) 4,120	164.0 (137.1-194.9) 6,008	
Elkhart County			124.8 (97.6-154.4) 1,195	108.3 (82.6-140.2) 1,733	
Lake County			194.8 (174.2-216.9) 8,449	191.1 (167.9-215.4) 12,661	
Marion County			152.7 (139.0-166.6) 20,989	157.4 (141.0-173.7) 36,822	
Saint Joseph County			131.4 (108.9-156.2) 3,423	114.6 (92.7-141.6) 4,938	
Vanderburgh County			109.0 (82.3-137.7) 1,756		
Kansas					
Sedgwick County			105.0 (85.5-126.9) 4,124		
Shawnee County			152.0 (119.4-188.2) 1,324	149.9 (112.6-194.4) 1,977	
Wyandotte County			172.4 (143.2-203.0) 2,408	202.3 (165.5-240.1) 4,256	
Kentucky					
Jefferson County			152.0 (136.8-167.4) 12,893	149.4 (133.4-166.8) 22,286	
Louisiana					
Acadia Parish			154.2 (120.1-191.5) 895	150.9 (114.7-194.0) 1,438	
Caddo Parish			107.6 (94.2-121.9) 8,511	109.4 (94.7-125.0) 15,214	
East Baton Rouge Parish			132.9 (119.5-146.2) 18,002	131.9 (118.0-147.0) 26,497	

	American Indian or Alaska Native males		Black males		
County or combined county-unit	15-24 Rate (95% UI) <i>Pop. size</i>	25-44 Rate (95% UI) <i>Pop. size</i>	15-24 Rate (95% UI) <i>Pop. size</i>	25-44 Rate (95% UI) <i>Pop. size</i>	45-64 Rate (95% UI) <i>Pop. size</i>
Jefferson Davis Parish			136.0 (99.5-176.4) 441	121.4 (83.8-162.4) 718	
Jefferson Parish			121.1 (105.8-136.4) 8,204	112.4 (96.6-129.6) 15,577	
Livingston Parish			105.4 (74.9-142.8) 749		
Orleans Parish			136.0 (123.1-150.1) 15,172	159.2 (142.9-176.7) 29,046	
Rapides Parish			101.2 (82.8-120.6) 3,300		
Saint John the Baptist Parish			114.3 (92.4-138.3) 1,827	118.5 (93.7-147.1) 3,164	
Terrebonne Parish			106.8 (80.9-135.7) 1,697		
Vermilion Parish			132.0 (97.6-172.3) 630	132.0 (94.1-178.6) 1,040	
Maryland					
Baltimore City			203.0 (188.5-217.4) 24,541	323.0 (300.6-346.7) 49,496	101.5 (85.7-116.4) 42,791
Baltimore County			101.2 (90.9-111.4) 17,840	104.7 (92.3-117.5) 32,472	
Michigan					
Genesee County			172.1 (149.5-194.7) 6,355	149.8 (127.9-173.3) 9,375	
Saginaw County			140.3 (116.0-167.1) 2,980	129.3 (103.0-159.8) 4,321	
Wayne County			110.1 (100.9-120.4) 45,264	127.5 (116.6-138.6) 80,540	
Mississippi					
Adams County				141.2 (108.0-179.5) 1,799	
Alcorn County			102.3 (70.3-140.3) 364		

	American Indian or Alaska Native males		Black males		
County or combined county-unit	15-24 Rate (95% UI) <i>Pop. size</i>	25-44 Rate (95% UI) <i>Pop. size</i>	15-24 Rate (95% UI) <i>Pop. size</i>	25-44 Rate (95% UI) <i>Pop. size</i>	45-64 Rate (95% UI) <i>Pop. size</i>
Attala County			111.8 (83.5-141.9) 530	110.3 (82.1-142.7) 884	
Bolivar County			103.6 (82.3-128.6) 1,382	130.9 (103.0-163.7) 2,209	
Coahoma County			138.9 (111.9-167.9) 1,391	177.8 (142.1-215.4) 1,773	
Grenada County			151.3 (116.6-191.7) 566	142.9 (109.3-184.1) 1,079	
Hinds County			106.2 (94.8-117.9) 13,045	131.2 (115.8-146.5) 21,492	
Holmes County			104.1 (79.2-131.9) 1,073	123.7 (93.7-155.6) 1,633	
Humphreys County				105.7 (73.9-142.0) 647	
Jefferson Davis County				118.0 (82.7-161.3) 766	
Leflore County				130.4 (101.7-161.2) 2,388	
Lincoln County			101.5 (75.5-132.1) 667		
Sharkey County				101.2 (65.2-145.9) 280	
Tunica County				105.8 (78.1-138.1) 860	
Washington County			141.6 (115.2-167.2) 2,104	180.7 (149.5-214.0) 3,484	
Missouri					
Cape Girardeau County			103.0 (72.6-135.8) 762		
Jackson County			184.8 (167.3-202.4) 11,758	236.7 (214.1-261.2) 20,783	
Pemiscot County			107.9 (73.0-149.6) 310	109.0 (72.1-158.4) 409	

	American Indian or Alaska Native males		Black males		
County or combined county-unit	15-24 Rate (95% UI) <i>Pop. size</i>	25-44 Rate (95% UI) <i>Pop. size</i>	15-24 Rate (95% UI) <i>Pop. size</i>	25-44 Rate (95% UI) <i>Pop. size</i>	45-64 Rate (95% UI) <i>Pop. size</i>
Saint Louis City			235.0 (212.3-259.0) 9,195	348.9 (313.2-385.5) 16,821	
Saint Louis County			199.5 (182.1-216.9) 18,326	196.8 (177.9-216.6) 29,739	
Scott County			130.6 (92.0-175.6) 352	113.0 (75.8-162.7) 580	
New Jersey					
Salem County			104.5 (74.1-139.0) 717		
New York					
Onondaga County			113.6 (93.8-135.4) 4,942		
North Carolina					
Cumberland County		100.2 (56.2-166.2) 694			
Hoke County		104.3 (58.4-165.9) 589			
Lee County			142.5 (104.4-187.8) 810	124.2 (89.4-167.0) 1,454	
New Hanover County			106.3 (78.9-136.3) 2,467	101.2 (73.9-134.5) 3,497	
Robeson County	101.9 (74.2-131.7) 3,828	129.9 (103.3-156.3) 6,370	123.1 (93.0-157.3) 2,541		
Rockingham County			107.5 (82.9-136.8) 1,046		
Scotland County			101.7 (77.4-130.2) 939		
Vance County			133.2 (103.3-167.1) 1,539	140.5 (106.0-178.2) 2,301	
Ohio					
Clark County			115.9 (87.2-149.3) 1,139	106.5 (76.5-143.5) 1,537	

	American Indian or Alaska Native males		Black males		
County or combined county-unit	15-24 Rate (95% UI) <i>Pop. size</i>	25-44 Rate (95% UI) <i>Pop. size</i>	15-24 Rate (95% UI) <i>Pop. size</i>	25-44 Rate (95% UI) <i>Pop. size</i>	45-64 Rate (95% UI) <i>Pop. size</i>
Cuyahoga County			132.2 (121.0-144.2) 26,440	134.7 (122.0-149.2) 42,484	
Hamilton County			134.2 (120.5-148.4) 15,895	111.8 (98.7-126.1) 25,961	
Jefferson County			123.6 (85.3-167.7) 356		
Lucas County			100.5 (85.8-117.0) 6,954		
Mahoning County			175.5 (147.5-203.4) 3,095	159.9 (132.2-191.6) 4,445	
Montgomery County			134.3 (117.1-153.4) 8,803	128.5 (110.3-149.7) 13,625	
Summit County			130.3 (112.4-150.4) 6,677	122.8 (103.6-143.8) 9,760	
Trumbull County			128.4 (102.2-156.9) 1,512	109.1 (83.9-140.5) 2,349	
Oklahoma					
Choctaw County			130.6 (85.5-192.1) 117	112.9 (66.2-172.6) 173	
McCurtain County			121.7 (81.7-174.4) 213	102.5 (66.4-147.5) 345	
Oklahoma County			102.1 (89.6-116.3) 9,899	109.4 (93.1-126.3) 17,664	
Tulsa County			127.8 (108.7-147.7) 6,069	138.7 (115.3-164.3) 9,532	
Pennsylvania					
Allegheny County			155.4 (139.2-172.4) 13,092	148.0 (129.9-166.2) 21,454	
Beaver County			103.5 (77.3-131.0) 947		
Dauphin County			101.1 (85.3-119.3) 3,952		

	American Indian or Alaska Native males		Black males		
County or combined county-unit	15-24 Rate (95% UI) <i>Pop. size</i>	25-44 Rate (95% UI) <i>Pop. size</i>	15-24 Rate (95% UI) <i>Pop. size</i>	25-44 Rate (95% UI) <i>Pop. size</i>	45-64 Rate (95% UI) <i>Pop. size</i>
Delaware County			104.9 (91.9-119.5) 10,631		
Lawrence County			124.2 (88.5-169.3) 421	108.1 (68.0-159.2) 536	
Philadelphia County			135.4 (126.3-145.1) 44,943	145.2 (134.6-156.5) 85,235	
York County			112.3 (90.6-135.8) 2,590		
South Carolina					
Barnwell County			119.2 (91.2-154.4) 624	115.2 (83.1-155.0) 1,024	
Beaufort County			108.1 (84.3-134.3) 2,603		
Charleston County			144.7 (126.2-165.1) 6,970	125.7 (106.5-144.8) 13,983	
Colleton County			159.3 (124.2-195.8) 864	146.3 (110.6-186.4) 1,566	
Dillon County			100.1 (76.6-128.3) 1,054	100.7 (76.7-129.5) 1,756	
Tennessee					
Davidson County			105.1 (94.0-117.1) 14,331		
Gibson County			108.4 (77.5-141.9) 639		
Hamilton County			109.1 (92.9-125.3) 5,330	100.0 (83.3-117.1) 8,571	
Knox County			113.5 (95.3-132.4) 4,257	109.1 (88.6-132.3) 5,317	
Madison County				100.5 (79.2-124.1) 4,107	
Robertson County			120.4 (84.7-163.4) 371		

	American Indian or Alaska Native males		Black males		
County or combined county-unit	15-24 Rate (95% UI) <i>Pop. size</i>	25-44 Rate (95% UI) <i>Pop. size</i>	15-24 Rate (95% UI) <i>Pop. size</i>	25-44 Rate (95% UI) <i>Pop. size</i>	45-64 Rate (95% UI) <i>Pop. size</i>
Shelby County			131.3 (120.7-142.0) 37,182	128.0 (117.1-139.2) 63,316	
Texas					
Hardin County			108.0 (67.3-157.2) 254		
Harrison County			102.6 (76.8-131.5) 1,044		
Virginia					
Hopewell City			123.0 (88.3-164.8) 690	112.3 (73.6-164.0) 1,189	
Martinsville City			123.9 (72.7-185.3) 378		
Petersburg City			180.1 (148.2-219.6) 1,294	185.4 (146.1-232.5) 2,880	
Pittsylvania County/Danville City			101.7 (83.8-122.7) 2,231		
Portsmouth City				102.2 (81.9-123.8) 6,697	
Richmond City			111.9 (94.5-130.0) 6,935	121.4 (99.5-142.6) 13,956	
West Virginia					
Cabell County			127.1 (91.9-171.8) 525	109.3 (71.4-157.6) 679	
Kanawha County			118.8 (92.5-147.7) 1,384	103.4 (75.5-134.9) 2,016	
Wisconsin					
Milwaukee County			120.9 (108.5-133.8) 19,890	139.5 (125.8-155.9) 31,395	

Counties are organized alphabetically by state and then county. Average population sizes were rounded for interpretation. UI=uncertainty interval. Pop=population.

eTable 2: Median changes in age-standardized, county-level homicide rates and the proportion of counties that saw increases and decreases between 2000 and 2019, by race and ethnicity, sex, and age.

Racial and ethnic population	Number of counties	Age	Males					Females				
			% Change median (IQR)	Counties with increases (%)		Counties with decreases (%)		% Change Median (IQR)	Counties with increases (%)		Counties with decreases (%)	
				Total ^a	Stat. Sig. ^b	Total ^a	Stat. Sig. ^b		Total ^a	Stat. Sig. ^b	Total ^a	Stat. Sig. ^b
American Indian or Alaska Native	474	0 to 14	19.6 (-6.9, 43.5)	318 (67.1%)	1 (0.2%)	156 (32.9%)	0 (0.0%)	-0.1 (-15.1, 13.1)	236 (49.8%)	0 (0.0%)	238 (50.2%)	0 (0.0%)
		15 to 24	8.5 (-17.4, 38.4)	285 (60.1%)	11 (2.3%)	189 (39.9%)	6 (1.3%)	4.8 (-14.6, 21.6)	273 (57.6%)	0 (0.0%)	201 (42.4%)	3 (0.6%)
		25 to 44	53.8 (21.6, 107.1)	423 (89.2%)	87 (18.4%)	51 (10.8%)	0 (0.0%)	16.2 (1.0, 33.4)	360 (75.9%)	2 (0.4%)	114 (24.1%)	0 (0.0%)
		45 to 64	43.0 (16.3, 94.5)	412 (86.9%)	53 (11.2%)	62 (13.1%)	0 (0.0%)	18.4 (2.6, 35.0)	371 (78.3%)	3 (0.6%)	103 (21.7%)	0 (0.0%)
		65+	2.7 (-15.5, 23.7)	255 (53.8%)	0 (0.0%)	219 (46.2%)	0 (0.0%)	-15.2 (-27.1, -2.9)	102 (21.5%)	0 (0.0%)	372 (78.5%)	1 (0.2%)
Asian	667	0 to 14	5.6 (-12.3, 25.7)	396 (59.4%)	1 (0.1%)	271 (40.6%)	2 (0.3%)	-16.9 (-25.4, -7.8)	68 (10.2%)	0 (0.0%)	599 (89.8%)	1 (0.1%)
		15 to 24	-44.2 (-57.2, -32.0)	17 (2.5%)	0 (0.0%)	650 (97.5%)	131 (19.6%)	-35.9 (-45.1, -24.9)	20 (3.0%)	0 (0.0%)	647 (97.0%)	20 (3%)
		25 to 44	-31.0 (-44.9, -14.1)	74 (11.1%)	1 (0.1%)	593 (88.9%)	61 (9.1%)	-41.4 (-47.8, -34.0)	8 (1.2%)	0 (0.0%)	659 (98.8%)	34 (5.1%)
		45 to 64	-33.0 (-46.1, -20.4)	41 (6.1%)	0 (0.0%)	626 (93.9%)	41 (6.1%)	-33.8 (-41.1, -26.0)	15 (2.2%)	0 (0.0%)	652 (97.8%)	2 (0.3%)
		65+	-34.6 (-46.0, -23.5)	28 (4.2%)	0 (0.0%)	639 (95.8%)	4 (0.6%)	-17.8 (-26.2, -7.8)	70 (10.5%)	0 (0.0%)	597 (89.5%)	0 (0.0%)
Black	1488	0 to 14	42.3 (16.1, 68.7)	1302 (87.5%)	173 (11.6%)	186 (12.5%)	17 (1.1%)	-3.0 (-14.6, 6.7)	620 (41.7%)	1 (0.1%)	868 (58.3%)	7 (0.5%)
		15 to 24	24.0 (3.1, 47.8)	1158 (77.8%)	298 (20.0%)	330 (22.2%)	74 (5.0%)	7.9 (-5.5, 24.5)	983 (66.1%)	9 (0.6%)	505 (33.9%)	22 (1.5%)
		25 to 44	68.1 (39.4, 105.7)	1406 (94.5%)	729 (49.0%)	82 (5.5%)	19 (1.3%)	-12.5 (-22.9, -0.8)	342 (23.0%)	2 (0.1%)	1146 (77.0%)	34 (2.3%)
		45 to 64	30.4 (8.8, 59.9)	1249 (83.9%)	114 (7.7%)	239 (16.1%)	7 (0.5%)	5.7 (-4.8, 17.5)	953 (64.0%)	2 (0.1%)	535 (36.0%)	3 (0.2%)

Racial and ethnic population	Number of counties	Age	Males					Females				
			% Change median (IQR)	Counties with increases (%)		Counties with decreases (%)		% Change Median (IQR)	Counties with increases (%)		Counties with decreases (%)	
				Total ^a	Stat. Sig. ^b	Total ^a	Stat. Sig. ^b		Total ^a	Stat. Sig. ^b	Total ^a	Stat. Sig. ^b
		65+	-27.1 (-37.4, -13.9)	151 (10.1%)	1 (0.1%)	1337 (89.9%)	13 (0.9%)	-26.6 (-34.1, -19.4)	28 (1.9%)	0 (0.0%)	1460 (98.1%)	8 (0.5%)
Latino	1478	0 to 14	2.7 (-13.7, 24.2)	809 (54.7%)	5 (0.3%)	669 (45.3%)	22 (1.5%)	-24.2 (-34.5, -13.3)	111 (7.5%)	0 (0.0%)	1367 (92.5%)	22 (1.5%)
		15 to 24	-29.0 (-42.8, -14.8)	148 (10.0%)	1 (0.1%)	1330 (90.0%)	208 (14.1%)	-13.9 (-28.5, 0.6)	383 (25.9%)	0 (0.0%)	1095 (74.1%)	32 (2.2%)
		25 to 44	-3.1 (-24.3, 18.6)	690 (46.7%)	18 (1.2%)	788 (53.3%)	73 (4.9%)	-16.3 (-27.2, -4.7)	245 (16.6%)	0 (0.0%)	1233 (83.4%)	29 (2.0%)
		45 to 64	-23.4 (-38.9, -5.1)	291 (19.7%)	4 (0.3%)	1187 (80.3%)	75 (5.1%)	-22.1 (-31.1, -11.3)	140 (9.5%)	0 (0.0%)	1338 (90.5%)	8 (0.5%)
		65+	-38.9 (-47.1, -28.5)	50 (3.4%)	0 (0.0%)	1428 (96.6%)	18 (1.2%)	-32.4 (-40.1, -24.5)	8 (0.5%)	0 (0.0%)	1470 (99.5%)	3 (0.2%)
White	3051	0 to 14	3.4 (-10.5, 16.8)	1726 (56.6%)	4 (0.1%)	1325 (43.4%)	45 (1.5%)	-3.6 (-12.2, 5.9)	1207 (39.6%)	0 (0.0%)	1844 (60.4%)	7 (0.2%)
		15 to 24	2.8 (-17.0, 24.4)	1631 (53.5%)	16 (0.5%)	1420 (46.5%)	72 (2.4%)	-14.3 (-27.1, -1.9)	664 (21.8%)	1 (0.0%)	2387 (78.2%)	85 (2.8%)
		25 to 44	38.2 (12.0, 65.2)	2571 (84.3%)	279 (9.1%)	480 (15.7%)	30 (1.0%)	-5.8 (-15.6, 5.3)	1084 (35.5%)	1 (0.0%)	1967 (64.5%)	34 (1.1%)
		45 to 64	23.6 (3.8, 44.1)	2415 (79.2%)	80 (2.6%)	636 (20.8%)	15 (0.5%)	19.6 (7.0, 34.8)	2619 (85.8%)	9 (0.3%)	432 (14.2%)	1 (0.0%)
		65+	-8.4 (-20.2, 3.3)	943 (30.9%)	0 (0.0%)	2108 (69.1%)	9 (0.3%)	-5.3 (-14.8, 5.4)	1120 (36.7%)	0 (0.0%)	1931 (63.3%)	0 (0.0%)

IQR=Interquartile range. Stat Sig=Statistically significant.