



RESEARCH ARTICLE

Competing risk survival analysis of time to in-hospital death or discharge in a large urban neonatal unit in Kenya [version 1; peer review: 3 approved]

Jalemba Aluvaala ¹⁻³, Gary S. Collins ^{4,5}, Beth Maina⁶, Catherine Mutinda⁶, Mary Wayiego⁶, James A. Berkley ^{2,3,7}, Mike English ^{2,3}

¹Paediatrics and Child Health, University of Nairobi, Nairobi, Kenya

²Centre for Tropical Medicine and Global Health, Nuffield Department of Medicine, University of Oxford, Oxford, UK

³KEMRI-Wellcome Trust Research Programme, Nairobi, Kenya

⁴Centre for Statistics in Medicine, Nuffield Department of Orthopaedics, Rheumatology and Musculoskeletal Sciences, Botnar Research Centre, University of Oxford, Oxford, UK

⁵Oxford University Hospitals NHS Foundation Trust, Oxford, UK

⁶Neonatal Unit, Pumwani Maternity Hospital, Nairobi, Kenya

⁷The Childhood Acute Illness & Nutrition (CHAIN) Network, Nairobi, Kenya

v1 First published: 17 Jun 2019, 4:96 (<https://doi.org/10.12688/wellcomeopenres.15302.1>)

Latest published: 17 Jun 2019, 4:96 (<https://doi.org/10.12688/wellcomeopenres.15302.1>)

Abstract

Background: Clinical outcomes data are a crucial component of efforts to improve health systems globally. Strengthening of these health systems is essential if the Sustainable Development Goals (SDG) are to be achieved. Target 3.2 of SDG Goal 3 is to end preventable deaths and reduce neonatal mortality to 12 per 1,000 or lower by 2030. There is a paucity of data on neonatal in-hospital mortality in Kenya that is poorly captured in the existing health information system. Better measurement of neonatal mortality in facilities may help promote improvements in the quality of health care that will be important to achieving SDG 3 in countries such as Kenya.

Methods: This was a cohort study using routinely collected data from a large urban neonatal unit in Nairobi, Kenya. All the patients admitted to the unit between April 2014 to December 2015 were included. Clinical characteristics are summarised descriptively, while the competing risk method was used to estimate the probability of in-hospital mortality considering discharge alive as the competing risk.

Results: A total of 9,115 patients were included. Most were males (966/9115, 55%) and the majority (6287/9115, 69%) had normal birthweight (2.5 to 4 kg). Median length of stay was 2 days (range, 0 to 98 days) while crude mortality was 9.2% (839/9115). The probability of in-hospital death was higher than discharge alive for birthweight less than 1.5 kg with the transition to higher probability of discharge alive observed after the first week in birthweight 1.5 to <2 kg.

Conclusions: These prognostic data may inform decision making, e.g. in the organisation of neonatal in-patient service delivery to improve the

Open Peer Review

Reviewer Status

	Invited Reviewers		
	1	2	3
version 1			
published 17 Jun 2019	report	report	report

- Elizabeth Molyneux** , University of Malawi, Blantyre, Malawi
- Alison A. Leaf** , University Hospital Southampton NHS Foundation Trust, Southampton, UK
- Cheryl Battersby**, Imperial College London, London, UK

Any reports and responses or comments on the article can be found at the end of the article.

quality of care. More of such data are therefore required from neonatal units in Kenya and other low resources settings especially as more advanced neonatal care is scaled up.

Keywords

Neonatal, mortality, survival, prognosis, hospital, Kenya, competing risks



This article is included in the [KEMRI | Wellcome Trust gateway](#).

Corresponding author: Jalemba Aluvaala (jaluvaala@kemri-wellcome.org)

Author roles: **Aluvaala J:** Conceptualization, Data Curation, Formal Analysis, Investigation, Methodology, Project Administration, Writing – Original Draft Preparation; **Collins GS:** Methodology, Supervision, Writing – Review & Editing; **Maina B:** Project Administration, Writing – Review & Editing; **Mutinda C:** Project Administration, Writing – Review & Editing; **Wayiego M:** Project Administration, Writing – Review & Editing; **Berkley JA:** Methodology, Supervision, Writing – Review & Editing; **English M:** Conceptualization, Funding Acquisition, Methodology, Resources, Supervision, Writing – Review & Editing

Competing interests: No competing interests were disclosed.

Grant information: This work was primarily supported by a Wellcome Trust Senior Fellowship (097170) awarded to M.E. Additional support was provided by Health Systems Research Initiative joint grant provided by the Department for International Development, UK (DFID), Economic and Social Research Council (ESRC), Medical Research Council (MRC), and Wellcome Trust, grant number MR/M015386/1 and a Wellcome Trust core grant awarded to the KEMRI-Wellcome Trust Research Programme (092654).

The funders had no role in study design, data collection and analysis, decision to publish, or preparation of the manuscript.

Copyright: © 2019 Aluvaala J *et al.* This is an open access article distributed under the terms of the [Creative Commons Attribution Licence](#), which permits unrestricted use, distribution, and reproduction in any medium, provided the original work is properly cited.

How to cite this article: Aluvaala J, Collins GS, Maina B *et al.* **Competing risk survival analysis of time to in-hospital death or discharge in a large urban neonatal unit in Kenya [version 1; peer review: 3 approved]** Wellcome Open Research 2019, 4:96 (<https://doi.org/10.12688/wellcomeopenres.15302.1>)

First published: 17 Jun 2019, 4:96 (<https://doi.org/10.12688/wellcomeopenres.15302.1>)

Introduction

Clinical outcomes data are a crucial component of efforts to develop and improve health systems globally¹. Strengthening of these health systems is essential if the Sustainable Development Goals (SDG) are to be achieved². For neonates, Target 3.2 of SDG Goal 3 is to end preventable deaths and reduce mortality to 12 per 1,000 or lower by 2030³. In the Millennium Development Goal (MDG) era (2000–15) slower progress was observed in reduction of neonatal mortality relative to under 5 mortality. As a result, in 2015 neonatal mortality accounted for 45% of under 5 mortality in many countries, including Kenya⁴. Going forward, better measurement of neonatal mortality in facilities may help promote improvements in the quality of health care that will be important to achieving SDG 3 in countries such as Kenya^{5,6}.

There is, however, a paucity of data on neonatal in-hospital mortality in Kenya, as it is poorly captured in the existing health information system (District Health Information System version 2 (DHIS2))⁷. In 15 published reports over a 10-year period from Kenya (2007–16) that included approximately 20,000 neonates

(Table 1), the inpatient case fatality ratio for babies admitted to newborn care units (NBU, spanning all levels of dependency) varied markedly, ranging from 3 to 62%. Only two reports included time to in-hospital death or length of stay^{8,9}. These reports suggest a clear need for both better data capture and a need for more standardised approaches to reporting mortality from NBU.

Survival analysis approaches are well suited to examine both in-hospital mortality and length of stay to obtain insights beyond that provided by case fatality rates alone. The effect of competing risks, accounting of being discharged alive, must, however, be considered to avoid overestimation of the probability of the event of interest^{10,11}. In neonatal survival analysis, Hinchliffe and colleagues demonstrated the utility of the competing risk approach for modelling length of stay where there are significant rates of mortality in the neonatal unit¹².

The prognostic data derived from such approaches may inform decision making in the organisation of neonatal in-patient service delivery to improve the quality of care¹³. Other uses

Table 1. Neonatal inpatient case fatality in Kenyan hospitals.

Study	Year	Hospitals	Sample	Weight*	CFR
Were <i>et al.</i> ¹⁴	2007	1	344	<1500g	159/344 (46%)
Mwaniki <i>et al.</i> ^{15†}	2009	1	1105	All	336/1106 (30%)
Were <i>et al.</i> ¹⁶	2009	1	260	<1500g	116/260 (45%)
Talbert <i>et al.</i> ^{17‡}	2010	1	Unspecified	All All	24%§ vs 21%¶ (0–6 days) 8%§ vs 4%¶ (7–28 days)
Mwaniki <i>et al.</i> ^{18‡}	2010	1	1572¶	All	300/1572 (19%)
Mwaniki <i>et al.</i> ^{8‡}	2010	1	8756	All	2053/8756 (24%)**
Mwaniki <i>et al.</i> ^{19‡}	2010	1	5114	All	1011/5114 (20%)
Marete <i>et al.</i> ²⁰	2011	1	135	<2500g	62/135 (46%)
Gathara <i>et al.</i> ²¹	2011	8	798	All	241/639 (38%)
Kohli-Kochhar ²²	2011	1	152	Unspecified	4/152 (3%)††
Yego <i>et al.</i> ²³	2013	1	200	Unspecified	68/1000 live births
Aluvaala <i>et al.</i> ⁹	2015	22	1065	All	180/1065 (17%)
Ibinda <i>et al.</i> ^{24‡}	2015	1	191	All	118/191 (62%)**
Aluvaala <i>et al.</i> ²⁵	2015	5	1384	All	263/1384 (19%)
Myhre <i>et al.</i> ²⁶	2016	1	118	<2500g	10/46(22%) vs 7/72 (11%)#

*Birth weight eligible for inclusion in the study.

†Same facility, different studies, part of a demographic surveillance system.

‡All outborn, numbers not provided

¶All inborn, numbers not provided

†Total neonatal admissions were 3302: excluded 1702 from outside DSS area and 28 readmissions

**Average over 19 years (1990–2008), reduced from 30.8% in 1990 to 16.5% in 2008

††Patients with blood culture positive sepsis only in a private tertiary hospital

**Neonatal Tetanus only

#Before (22%) and after (11%) introduction of continuous positive airway pressure.

CFR, case report form.

include more meaningful comparisons of mortality across multiple hospitals²⁷. For example, in the United Kingdom they have facilitated reorganisation of neonatal service provision by different levels of care and severity of illness²⁸. Our recent work in Nairobi, Kenya (a high mortality setting) suggests the need for strategic reorganisation of such services to improve quality of in-patient neonatal care. Utilisation data suggest 71% of available care is delivered in four public sector neonatal units but comparable outcome data are lacking and referral services are poorly developed²⁹. We therefore used routine data from the largest of the Nairobi facilities as a first step in better understanding in-hospital neonatal mortality and length of stay using competing risk survival analysis.

Methods

Study design

This was a retrospective cohort study using a routine inpatient data set from a large urban neonatal unit³⁰. Study participants were followed up from the time of admission to the unit to time of exit (defined as either death, discharge or referral).

Setting

The study site was the neonatal unit in the largest public-sector maternity hospital in Nairobi, Kenya. The unit admits approximately 4500 neonates annually and on any given day has about 60 neonates cared for by 2-3 nurses per shift³⁰. Total medical staffing providing 24 hour 7 days a week care includes four Paediatricians, six Medical Officers and four Clinical Officers³⁰. The admitted neonates receive essential inpatient neonatal care with the most advanced intervention being limited capacity to provide continuous positive airway pressure (CPAP) therapy.

Participants

All the patients admitted to the study neonatal unit between April 2014 to December 2015 were included. There were, however, no admissions between April to June 2015 due to industrial action.

Variables

The key clinical characteristics are: sex, birthweight, mode of delivery, place of delivery, admission diagnosis and outcome. Birthweight was classified by the five typically used categories: extremely low birth weight (ELBW); <1 kg, very low birth weight (VLBW); 1 to <1.5 kg, low birth weight (LBW); 1.5 to <2.5 kg, normal birth weight; 2.5 to 4 kg and macrosomia; >4 kg³¹. The key variables in the survival analyses are outcome and time to exit from the unit measured in days. There were three possible outcomes: death, discharged alive and referred.

Data sources and measurement

Data were abstracted from patient records at the point of exit from the unit and entered directly into the REDCapTM data capture tool that has been previously described^{32,33}.

Bias

Selection bias was minimised by including all patients admitted to the neonatal unit. In addition, data were entered

immediately after discharge (or death) to reduce the chance of missing patient records. Observation bias was minimized by previously described data quality assurance procedures³³.

Ethical approval

Ethical approval was provided by the KEMRI Scientific and Ethical Review Committee (SERU 3459). Individual consent was not required as de-identified data were abstracted from routine patient records after exit from the hospital to produce the secondary data used. The Kenya Ministry of Health gave permission for this work to be done.

Statistical methods

Clinical characteristics are presented using descriptive statistics. Competing risks was used to estimate the probability of in-hospital mortality considering discharge alive as the competing risk using cumulative incidence functions^{34,35}. The cumulative incidence functions were computed by estimating the joint probability of in-hospital mortality or discharge alive at a given time interval, given that the individual had not experienced either event in all prior intervals. The cumulative incidence at the end of a given time interval is the sum of the incidence in this interval and all previous intervals³⁴. Patients who were referred to other hospitals were right censored¹². These analyses were implemented in R (version 3.4.3) using the “cuminc” function of the “cmprsk” package (version 2.2-7)³⁵⁻³⁷.

Results

A total of 9,115 patients were included during the study period from April 2014 to December 2015. There were 5463 admissions in 2014 and 3652 in 2015. Admissions by month peaked at around 600 (June 2014), while the lowest number observed was around 250 (July 2015). The characteristics of the patients are presented in [Table 2](#).

There were slightly more males (4966/9115, 55%) than females in this population. Most of the neonates (6287/9115, 69%), were of normal birthweight (2.5 to 4 kg) with very few extremely low birthweight category (<1 kg) infants (49/9115, 0.5%). More than one in every three babies admitted were born through caesarean section (3660/9115, 41%). The most common admission diagnosis was birth asphyxia (3867/9115, 42%); however, given the lack of diagnostic facilities there were neonates with multiple diagnoses resulting in total admission episodes greater than the study population (see [Table 2](#) for further details).

The key outcome of interest is in-hospital mortality and almost one in every ten babies admitted died in the unit (839/9115, 9.2%, 95% CI 8.7 to 9.8%). Routine first trimester ultrasound is not available in the Kenyan public sector and estimated gestational age by dates was poorly documented with 70% missing, and is thus not included in [Table 2](#). For the reported clinical characteristics, the highest proportion of observations with missing data was 6% for HIV exposure status.

Data on length of stay and birthweight were available for 9092 out of all the 9115 patients admitted ([Table 2](#)). Most of neonatal admissions have a length of stay less than one week (83%,

Table 2. Clinical characteristics of neonates included in the study data set.

Characteristic	All patients (n=9115)	
	n	%
Sex		
Male	4966	55
Missing	42	0.5
Birthweight (kg)		
<1	49	0.5
1 to <1.5	280	3
1.5 to <2.5	2132	23
2.5 to 4	6287	69
>4	353	4
Missing	23	0.3
Mode of delivery		
Spontaneous vaginal	5116	58
Assisted vaginal	4	0.04
Breech	90	1
Caesarean section	3660	41
Missing	245	3
Outborn		
Yes	226	3
Missing	0	
HIV exposure		
Exposed	547	6
Missing	529	6
Admission diagnosis*		
Birth asphyxia	3867	42
Preterm/LBW	2029	22
Neonatal sepsis	960	11
Respiratory distress syndrome	724	8
Neonatal jaundice	513	6
Others	1014	11
Outcome		
Discharged alive	8135	90
Dead	839	9
Referred	108	1
Missing	33	0.4
Mortality by birthweight (kg)		
Extremely low (<1)	45/49	92
Very low (1 to <1.5)	192/280	69
Low (1.5 to <2)	157/670	23
Low (2 to <2.5)	100/1448	7
Normal (2.5 to 4)	336/6253	5
Macrosomia (>4)	7/352	2

Characteristic	All patients (n=9115)	
	n	%
Length of stay by birth weight (kg) [†]		
Extremely low (<1)	49	1(0, 2)
Very low (1 to <1.5)	280	2(1, 17)
Low (1.5 to <2)	670	8(3, 15)
Low (2 to <2.5)	1448	2(1, 5)
Normal (2.5 to 4)	6253	2(1, 5)
Macrosomia (>4)	352	2(1, 4)

*These are admission episodes. Neonates with multiple diagnoses are counted under each of these making the total admission episodes greater than the study population.

[†]Length of stay values are median (lower, upper quartile).

7580/9107) with median of 2 days (range 0–98 days). The median stay is less than 5 days in all categories; a reflection of early high mortality and discharge for birthweight <2 kg and >2 kg, respectively. The interquartile range, however, varied, with the widest observed (16 days) for the VLBW. The shortest maximum length of stay was for Macrosomia (33 days) while the longest was for VLBW (98 days).

Probability of in-hospital mortality or discharge alive

a) Overall. Outcome status were available for 9074 out of the 9115 subjects admitted (96%). In-hospital death was observed in 840 neonates, 8126 were discharged alive, and 108 referrals. The longest duration of follow up was 98 days. [Figure 1](#) shows the absolute probability of in-hospital death and discharge alive over the follow-up period.

The probability of being discharged alive rapidly rises and remains higher than the probability of in-hospital death throughout follow up. The probability of in-hospital death peaks out at the overall case fatality rate of 9.2% observed. This peak is attained within the first week after admission, with 22% (188/840, 95% CI 20 to 25%) and 73% (613/840, 95% CI 70 to 76%) of these deaths occurring in the first 24 hours and between 24 hours to 7 days respectively. There was no difference in probability of in-hospitality death and probability of being discharged alive by sex with case fatality rate (CFR) in males 9.1% (449/4944) and 9.6% (391/4089) in females.

b) By birthweight. The probabilities of in-hospital death and discharge alive over time were analysed by birthweight. The lowest categories, i.e. ELBW (<1 kg) and VLBW (1 to <1.5 kg), are shown in [Figure 2](#). In total, 49 babies were born ELBW (45 dead, 1 alive, 3 referred) with CFR of 92% (45/49). There were 280 babies with VLBW, of which 192 died, 79 were discharged alive and nine were referred, and a CFR of 69% (192/280).

In both groups, there was a steep rise in probability of death in the first day and first week of admission, peaking at >0.9 for ELBW (≈ day 35) and 0.7 for VLBW (≈ day 70). In addition,

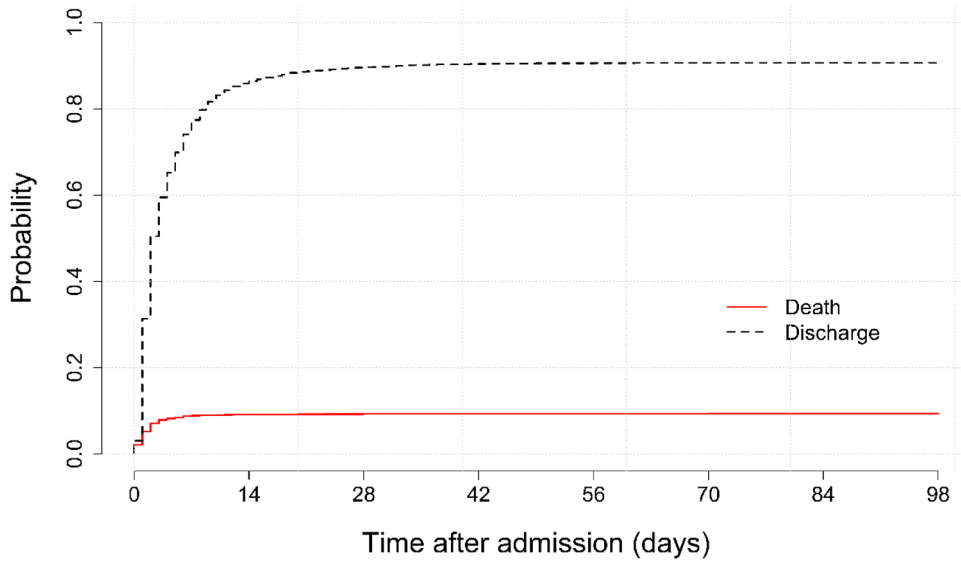


Figure 1. Probability of in-hospital death or discharge alive for all neonates.

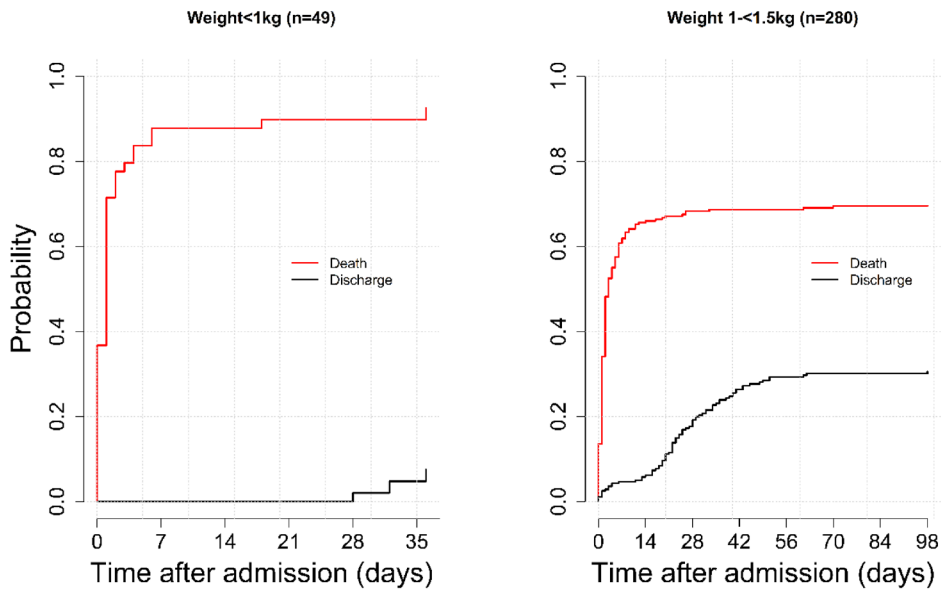


Figure 2. Probability of in-hospital death and discharge alive for birthweight less than 1.5 kg.

the probability of death remains higher than the probability of discharge alive throughout the course of hospital stay.

No babies were discharged alive during the first 28 days after admission for ELBW, while there was a gradual rise in the first two weeks for VLBW. The steepest rise in the probability of being discharged alive for VLBW neonates was seen between two weeks (14 days) and eight weeks (56 days) post

admission. These difference in patterns of in-hospital deaths and being discharged alive results in the wider gap between the two cumulative incidence curves seen in ELBW as compared to the VLBW.

The definition of LBW category, 1.5 to < 2.5 kg, is widely used in neonatal medicine; in this study, those with LBW comprised 2120 observations (257 dead, 1828 alive, 35 referred), with a

CFR of 12% (257/2118)³¹. The probability of discharge alive was greater than probability of in-hospital death (not shown), in contrast to Figure 2. To investigate this switch in probability of outcome, we split the category into two 500-g groups i.e. 1.5 to <2 kg and 2 to <2.5 kg as illustrated in Figure 3. The two graphs in Figure 3 include 670 neonates in the 1.5 to <2 kg category (157 dead, 493 alive, 20 referred) and 1450 neonates in the 2 to <2.5 kg category (100 dead, alive 1335, referred 15). The case fatality ratio is 23% (157/670) vs 7% (100/1448) for 1.5 to <2 kg and 2 to <2.5 kg categories, respectively.

From Figure 3, it is evident that the switch in survival probability occurs in the 1.5 to <2 kg category around the end of the first week of admission, where we see the cumulative incidence curves crossing. After this point, the probability of

discharge alive remains higher than probability of in-hospital death at all time points after admission. The peak probability of risk of in-hospital death rises faster and attains a higher peak in the 1.5 to 2 kg category compared to 2 to <2.5 kg; 23% vs 7%, respectively.

Figure 4 illustrates survival in the normal weight and macrosomia categories. There were 6233 with normal birth weight (336 dead, 5861 alive, 61 referred) with CFR of 5% (336/6233). The macrosomia category had 352 (7 dead, 343 alive, 2 referred) and a CFR of 2% (7/353).

Figure 4 shows that the maximum length of stay observed in normal weight babies was more than twice that observed in those in the macrosomia category: 70 days vs 33 days,

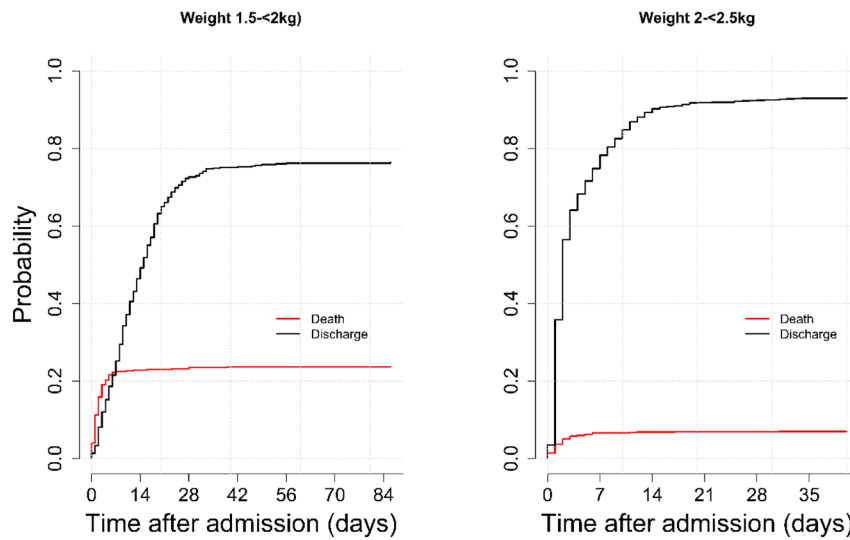


Figure 3. Probability of in-hospital death or discharge alive for birthweight 1.5 to <2 kg and 2 to <2.5 kg.

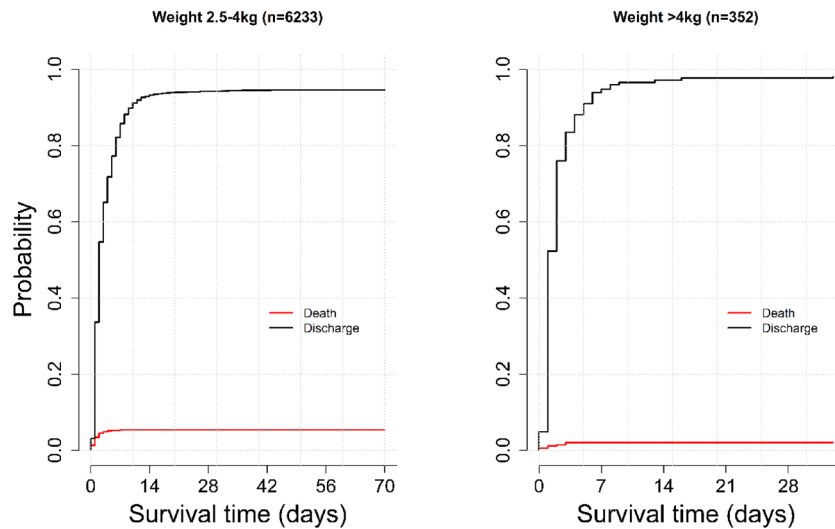


Figure 4. Probability of in-hospital death or discharge alive for birthweight 2.5 to 4 kg and greater than 4 kg.

respectively. The lowest estimated absolute probability of in-hospital death is observed in these two categories at less than 0.05.

Discussion

During the study period spanning a total of 18 months, 9115 neonates were admitted to the neonatal unit. Overall, about 1 in 10 (9%) of neonates admitted died with the highest case fatality among the ELBW (92%) and the lowest among those with macrosomia (2%). Whereas the risk of in-hospital death among the normal birth weight neonates (5%) was about half the overall risk, the absolute number of deaths (336/840 or 40% of all deaths) was the highest, as the majority (70%) of the admissions were of this category. The overall median length of stay was 2 days, with a range of 0–98 days. The ELBW neonates experienced short stays and the highest probability of death in contrast to macrosomic neonates who had short stays but with the lowest probability of death. Our Kenyan data revealed that amongst the traditional LBW category of babies (1.5 to <2.5 kg) that there are considerable differences in outcome between those 1.5 to <2.0 kg and the 2 to less than 2.5 kg sub-category suggesting that neonatal mortality reporting in similar settings should include this sub-categorisation.

The overall CFR in this study (9.2%) lies within the range (3–62%) observed in data available from other Kenyan hospitals (Table 1)^{22,24}. However, the extremes of this range represent special populations, i.e. the lowest (3%) was observed in neonatal intensive care in a tertiary private hospital while the highest (62%) included infants with neonatal tetanus only in a rural district hospital^{22,24}. Nonetheless, 9.2% is low relative to a CFR >10% reported in the majority (12/15) of Kenyan studies^{8,9,14–21,23–26,38}. The CFR in VLBW neonates was 69%, a figure much higher than 45%¹⁶ and 44%¹⁴ in a Kenyan tertiary hospital and reports of 48% in Malawi³⁹ and 38.9% in Tanzania³⁹. This CFR is, however, similar to the 68.9% reported from a rural NICU in Uganda⁴⁰. This high risk of death reflects the known association between VLBW and mortality⁴¹. This highlights how an overall CFR including all birthweight categories masks significant differences by weight category. Birthweight specific mortality is therefore a useful starting point for cross-site comparison given the availability of these data in settings without gestational age data. It is also clear that it is incorrect to make direct comparisons of mortality between hospitals without adjusting for differences in case mix. Understanding mortality within hospitals nevertheless remains important particularly for understanding and improving the quality of care in addition to tracking change over time^{42,43}.

Length of stay for most patients (87%) was a week or less. There are few data to compare with from Kenya, with only one study identified²⁶. In this study, Myhre and colleagues reported mean (and range) in days of 39 (10–112) vs 28 (16–54) before and after introduction of continuous positive airway pressure (CPAP)²⁶. Two studies were identified from other African countries. Pepler *et al.* (South Africa) found that the median was 11 days (range 1–171) while Zash and colleagues (Botswana) found a median of 5 days (interquartile range 2–15)^{44,45}. If neonatal units in low-resource settings achieve improvements in

survival of the admitted neonates, it is anticipated that there will be a concomitant increase in length of stay and resource use. For example, if the CFR rate for VLBW babies in the study facility is reduced from 70% to the 11% seen in the American Vermont Oxford Network, the number surviving to discharge would increase from 79/280 (1817 patient days) to 249/280 (5727 patient days)⁴⁶. This is a greater than 200% increase in patient days, which would lead to an increase in costs and should be considered in service delivery planning as in-patient care for neonates is developed further in high-mortality settings.

The difference in probability of dying observed after sub-categorization of the LBW (Figure 3) suggests the need for more granular weight such as 100- or 250-g intervals in reports from neonatal networks in high-income countries^{47,48}. There were no other instances of competing risk analysis in neonatal care pertaining to hospitals in Kenya or other African countries identified in the period 2007–2017. Hinchliffe *et al.* computed the probability of dying, being discharged and being cared for in the unit over time for 29 neonatal units in USA. They included neonates of gestational age 24–28 weeks admitted over a 5-year period (January 2006 to December 2010)¹². Two key similarities with our study are observed. Firstly, the highest rates of in-hospital death occur in the initial weeks after admission. Secondly, the probability of survival to discharge rose with increase in birthweight¹².

The competing risk method provides an accurate estimate of the probability of in-hospital mortality in the presence of a mutually exclusive alternate outcome (discharge alive)^{10,11}. This is achieved by simultaneously estimating the probability of in-hospital mortality and discharge alive, in contrast to the Kaplan-Meier method where the competing outcome is right-censored leading to overestimation of probability of the outcome of interest^{10,11}. Competing risk analyses as demonstrated in this study could thus be useful in communicating the probable length of stay by birthweight category to clinicians caring for neonates in high-mortality, low-resource settings. Such information can also be useful in communicating to parents on when they are likely to leave for home¹². In addition, in examining variation between units, such estimates would allow a more detailed comparison of patients than that afforded by overall case fatality rates only. Length of stay as a key determinant of hospital costs is useful in projecting resource requirements to inform resource allocation. With the anticipated improvement in survival to discharge, particularly for those with VLBW and ELBW, the resultant long hospital stays mean accurate estimates of probability of discharge at different time points, as provided by competing risk analyses, will be necessary to inform service delivery planning and organisation.

Limitations

These data are from one site and therefore represent only one context within a low resource setting. This facility has limited capacity to offer more advanced respiratory support (BCPAP) with only two machines, while many public sector neonatal units in Kenya have even more limited capacity. However, the facility has in common with other low-resource settings the provision of essential neonatal care with resource constraints particularly

low nurse to patient ratios⁴⁹. Gestational age is a key risk factor for neonatal outcomes but these data were largely missing. The lack of gestational age data means small for gestational age neonates are not identified in the context of low- and middle-income countries (LMICs), where the burden is estimated to be very high (32.4 million in 2010)⁵⁰. In-hospital mortality may be subject to bias as there may be variation in discharge criteria particularly when discharge is followed by unobserved early post discharge mortality. However, these data are useful for informing decision making particularly for groups of patients and for service planning.

Conclusion

Case fatality, length of stay and time to in-hospital death are important outcomes with respect to fundamental prognosis in neonatal hospital care. The observed difference in length of stay for the ELBW and VLBW babies overall and those discharged alive suggests that improved survival for these neonates will lead to longer hospital stays with attendant increase in costs requiring planning for this scenario. Attention also needs to be paid to the normal weight babies with regards to reduction of absolute numbers of deaths. The competing risk analyses provided estimates of cumulative incidence of in-hospital mortality, the probability of discharge alive over time and demonstrated residual variation in risk of death in birthweight categories. This residual variation suggests that better methods of estimating risk of in-hospital mortality, particularly at individual patient level are required. Data from this study are likely to be applicable to other district hospital level neonatal units in LMICs where intensive care is not available as evidenced by similarities in the case fatality rate. Nevertheless, more of such data are required from other neonatal units in Kenya and other low resources settings (akin to neonatal clinical networks in high income countries such as the Canadian Neonatal Network) to support service improvement and

monitoring especially as more advanced neonatal care is scaled up⁴⁸.

Data availability

Underlying data

The source data are owned by the Kenyan Ministry of Health, County Governments and as the data might be used to de-identify hospitals the study authors are not permitted to share the source data directly. Users who wish to reuse the source data can make a request initially through the KEMRI-Wellcome Trust Research Programme data governance committee. This committee will supply contact information for the KEMRI Scientific and Ethical Review unit, County Governments and individual hospitals as appropriate. The KEMRI-Wellcome Trust Research Programme data governance committee can be contacted at: dgc@kemri-wellcome.org.

Grant information

This work was primarily supported by a Wellcome Trust Senior Fellowship (097170) awarded to M.E. Additional support was provided by Health Systems Research Initiative joint grant provided by the Department for International Development, UK (DFID), Economic and Social Research Council (ESRC), Medical Research Council (MRC), and Wellcome Trust, grant number MR/M015386/1 and a Wellcome Trust core grant awarded to the KEMRI-Wellcome Trust Research Programme (092654).

The funders had no role in study design, data collection and analysis, decision to publish, or preparation of the manuscript.

Acknowledgements

The data management team of the Clinical Information Network at the KEMRI-Wellcome Trust Research Programme, Nairobi. The Kenya Paediatric Association plus the staff and management of Pumwani Maternity Hospital, Nairobi, Kenya.

References

- Santhakumaran S: **How to adjust for case-mix when comparing outcomes across healthcare providers.** *Arch Dis Child Educ Pract Ed.* 2014; **99**(2): 70–1. [PubMed Abstract](#) | [Publisher Full Text](#)
- Kieny MP, Bekedam H, Dovlo D, *et al.*: **Strengthening health systems for universal health coverage and sustainable development.** *Bull World Health Organ.* 2017; **95**(7): 537–9. [PubMed Abstract](#) | [Publisher Full Text](#) | [Free Full Text](#)
- United Nations; General Assembly: **Transforming our world: the 2030 Agenda for Sustainable Development.** 2015. [Reference Source](#)
- Liu L, Oza S, Hogan D, *et al.*: **Global, regional, and national causes of under-5 mortality in 2000–15: an updated systematic analysis with implications for the Sustainable Development Goals.** *Lancet.* 2016; **388**(10063): 3027–35. [PubMed Abstract](#) | [Publisher Full Text](#) | [Free Full Text](#)
- Bhutta ZA, Das JK, Bahl R, *et al.*: **Can available interventions end preventable deaths in mothers, newborn babies, and stillbirths, and at what cost?** *Lancet.* 2014; **384**(9940): 347–70. [PubMed Abstract](#) | [Publisher Full Text](#)
- World Health Organization: **Consultation on improving measurement of the quality of maternal, newborn and child care in health facilities.** 2014. [Reference Source](#)
- Health Information Systems Programme: **District Health Information System.** Version 2 ed.
- Mwaniki MK, Gatakaa HW, Mturi FN, *et al.*: **An increase in the burden of neonatal admissions to a rural district hospital in Kenya over 19 years.** *BMC Public Health.* 2010; **10**: 591. [PubMed Abstract](#) | [Publisher Full Text](#) | [Free Full Text](#)
- Aluvaala J, Nyamai R, Were F, *et al.*: **Assessment of neonatal care in clinical training facilities in Kenya.** *Arch Dis Child.* 2015; **100**(1): 42–7. [PubMed Abstract](#) | [Publisher Full Text](#) | [Free Full Text](#)
- Pintilie M: **[An introduction to competing risks analysis].** *Rev Esp Cardiol.* 2011; **64**(7): 599–605. [PubMed Abstract](#) | [Publisher Full Text](#)
- Varadhan R, Weiss CO, Segal JB, *et al.*: **Evaluating health outcomes in the presence of competing risks: a review of statistical methods and clinical applications.** *Med Care.* 2010; **48**(6 Suppl): S96–S105. [PubMed Abstract](#) | [Publisher Full Text](#)
- Hinchliffe SR, Seaton SE, Lambert PC, *et al.*: **Modelling time to death or discharge in neonatal care: an application of competing risks.** *Paediatr Perinat Epidemiol.* 2013; **27**(4): 426–33. [PubMed Abstract](#) | [Publisher Full Text](#)
- Hemingway H, Croft P, Perel P, *et al.*: **Prognosis research strategy (PROGRESS) 1: a framework for researching clinical outcomes.** *BMJ.* 2013; **346**: e5595. [PubMed Abstract](#) | [Publisher Full Text](#) | [Free Full Text](#)

14. Were FN, Bwibo NO: **Neonatal nutrition and later outcomes of very low birth weight infants at Kenyatta national hospital.** *Afr Health Sci.* 2007; 7(2): 108–14. [PubMed Abstract](#) | [Free Full Text](#)
15. Mwaniki MK, Nokes DJ, Ignas J, *et al.*: **Emergency triage assessment for hypoxaemia in neonates and young children in a Kenyan hospital: an observational study.** *Bull World Health Organ.* 2009; 87(4): 263–70. [PubMed Abstract](#) | [Publisher Full Text](#) | [Free Full Text](#)
16. Were FN, Bwibo NO: **The contribution of very low birth weight deaths to infant mortality.** *East Afr Med J.* 2009; 86(8): 374–7. [PubMed Abstract](#) | [Publisher Full Text](#)
17. Talbert AW, Mwaniki M, Mwarumba S, *et al.*: **Invasive bacterial infections in neonates and young infants born outside hospital admitted to a rural hospital in Kenya.** *Pediatr Infect Dis J.* 2010; 29(10): 945–9. [PubMed Abstract](#) | [Publisher Full Text](#) | [Free Full Text](#)
18. Mwaniki M, Mathenge A, Gwer S, *et al.*: **Neonatal seizures in a rural Kenyan District Hospital: aetiology, incidence and outcome of hospitalization.** *BMC Med.* 2010; 8(1): 16. [PubMed Abstract](#) | [Publisher Full Text](#) | [Free Full Text](#)
19. Mwaniki M, Talbert A, Mturi F, *et al.*: **Congenital and neonatal malaria in a rural Kenyan district hospital: An eight-year analysis.** *Malar J.* 2010; 9(1): 313. [PubMed Abstract](#) | [Publisher Full Text](#) | [Free Full Text](#)
20. Marete IK, Wasunna AO, Otieno PA: **Clinical risk index for babies (CRIB) II score as a predictor of neonatal mortality among low birth weight babies at Kenyatta National Hospital.** *East Afr Med J.* 2011; 88(1): 18–23. [PubMed Abstract](#)
21. Gathara D, Opiyo N, Wagai J, *et al.*: **Quality of hospital care for sick newborns and severely malnourished children in Kenya: A two-year descriptive study in 8 hospitals.** *BMC Health Serv Res.* 2011; 11(1): 307. [PubMed Abstract](#) | [Publisher Full Text](#) | [Free Full Text](#)
22. Kohli-Kochhar R, Omuse G, Revathi G: **A ten-year review of neonatal bloodstream infections in a tertiary private hospital in Kenya.** *J Infect Dev Ctries.* 2011; 5(11): 799–803. [PubMed Abstract](#) | [Publisher Full Text](#)
23. Yego F, StewartWilliams J, Byles J: **A retrospective analysis of maternal and neonatal mortality at a teaching and referral hospital in Kenya.** *Reprod Health.* 2013; 10(1): 13. [PubMed Abstract](#) | [Publisher Full Text](#) | [Free Full Text](#)
24. Ibinda F, Bauni E, Kariuki SM, *et al.*: **Incidence and Risk Factors for Neonatal Tetanus in Admissions to Kilifi County Hospital, Kenya.** *PLoS One.* 2015; 10(4): e0122606. [PubMed Abstract](#) | [Publisher Full Text](#) | [Free Full Text](#)
25. Aluvaala J, Okello D, Murithi G, *et al.*: **Delivery outcomes and patterns of morbidity and mortality for neonatal admissions in five Kenyan hospitals.** *J Trop Pediatr.* 2015; 61(4): 255–9. [PubMed Abstract](#) | [Publisher Full Text](#) | [Free Full Text](#)
26. Myhre J, Immaculate M, Okeyo B, *et al.*: **Effect of Treatment of Premature Infants with Respiratory Distress Using Low-cost Bubble CPAP in a Rural African Hospital.** *J Trop Pediatr.* 2016; 62(5): 385–9. [PubMed Abstract](#) | [Publisher Full Text](#)
27. English M, Mwaniki P, Julius T, *et al.*: **Hospital Mortality - a neglected but rich source of information supporting the transition to higher quality health systems in low and middle income countries.** *BMC Med.* 2018; 16(1): 32. [PubMed Abstract](#) | [Publisher Full Text](#) | [Free Full Text](#)
28. Gale C, Santhakumaran S, Nagarajan S, *et al.*: **Impact of managed clinical networks on NHS specialist neonatal services in England: population based study.** *BMJ.* 2012; 344: e2105. [PubMed Abstract](#) | [Publisher Full Text](#) | [Free Full Text](#)
29. Murphy GAV, Gathara D, Mwachiro J, *et al.*: **Effective coverage of essential inpatient care for small and sick newborns in a high mortality urban setting: a cross-sectional study in Nairobi City County, Kenya.** *BMC Med.* 2018; 16(1): 72. [PubMed Abstract](#) | [Publisher Full Text](#) | [Free Full Text](#)
30. Maina M, Aluvaala J, Mwaniki P, *et al.*: **Using a common data platform to facilitate audit and feedback on the quality of hospital care provided to sick newborns in Kenya.** *BMJ glob health.* 2018; 3(5): e001027. [PubMed Abstract](#) | [Publisher Full Text](#) | [Free Full Text](#)
31. Adams MM: **Birth Weight, Gestational Duration, and Fetal Growth.** Perinatal Epidemiology for Public Health Practice. Boston, MA: Springer US; 2009; 225–73. [Publisher Full Text](#)
32. Harris PA, Taylor R, Thielke R, *et al.*: **Research electronic data capture (REDCap)—a metadata-driven methodology and workflow process for providing translational research informatics support.** *J Biomed Inform.* 2009; 42(2): 377–81. [PubMed Abstract](#) | [Publisher Full Text](#) | [Free Full Text](#)
33. Tuti T, Bitok M, Paton C, *et al.*: **Innovating to enhance clinical data management using non-commercial and open source solutions across a multi-center network supporting inpatient pediatric care and research in Kenya.** *J Am Med Inform Assoc.* 2016; 23(1): 184–92. [PubMed Abstract](#) | [Publisher Full Text](#) | [Free Full Text](#)
34. Satagopan JM, Ben-Porat L, Berwick M, *et al.*: **A note on competing risks in survival data analysis.** *Br J Cancer.* 2004; 91(7): 1229–35. [PubMed Abstract](#) | [Publisher Full Text](#) | [Free Full Text](#)
35. Austin PC, Lee DS, Fine JP: **Introduction to the Analysis of Survival Data in the Presence of Competing Risks.** *Circulation.* 2016; 133(6): 601–9. [PubMed Abstract](#) | [Publisher Full Text](#) | [Free Full Text](#)
36. R Core Team: **R: A Language and Environment for Statistical Computing.** Vienna, Austria: R Foundation for Statistical Computing.
37. Gray B: **cmprsk: Subdistribution Analysis of Competing Risks.** 2014.
38. Mwaniki M, Talbert A, Njuguna P, *et al.*: **Clinical indicators of bacterial meningitis among neonates and young infants in rural Kenya.** *BMC Infect Dis.* 2011; 11(1): 301. [PubMed Abstract](#) | [Publisher Full Text](#) | [Free Full Text](#)
39. Ahlsén AK, Spong E, Kafumba N, *et al.*: **Born too small: who survives in the public hospitals in Lilongwe, Malawi?** *Arch Dis Child Fetal Neonatal Ed.* 2015; 100(2): F150–F4. [PubMed Abstract](#) | [Publisher Full Text](#) | [Free Full Text](#)
40. Hedstrom A, Ryman T, Otai C, *et al.*: **Demographics, clinical characteristics and neonatal outcomes in a rural Ugandan NICU.** *BMC Pregnancy Childbirth.* 2014; 14: 327. [PubMed Abstract](#) | [Publisher Full Text](#) | [Free Full Text](#)
41. Wilcox AJ: **On the importance—and the unimportance—of birthweight.** *Int J Epidemiol.* 2001; 30(6): 1233–41. [PubMed Abstract](#) | [Publisher Full Text](#)
42. Stewart K, Choudry MI, Buckingham R: **Learning from hospital mortality.** *Clin Med (Lond).* 2016; 16(6): 530–4. [PubMed Abstract](#) | [Publisher Full Text](#) | [Free Full Text](#)
43. Rachel MM, Stewart MW: **Establishing a Mortality Review Process.** *J Nurs Care Qual.* 2009; 24(3): 211–22. [PubMed Abstract](#) | [Publisher Full Text](#)
44. Zash RM, Ajose-Popoola O, Stordal K, *et al.*: **Risk factors for mortality among human immunodeficiency virus-exposed and unexposed infants admitted to a neonatal intensive care unit in Botswana.** *J Paediatr Child Health.* 2014; 50(3): 189–95. [PubMed Abstract](#) | [Publisher Full Text](#) | [Free Full Text](#)
45. Pepler PT, Uys DW, Nel DG: **Predicting mortality and length-of-stay for neonatal admissions to private hospital neonatal intensive care units: a Southern African retrospective study.** *Afr Health Sci.* 2012; 12(2): 166–73. [PubMed Abstract](#) | [Publisher Full Text](#) | [Free Full Text](#)
46. Horbar JD, Edwards EM, Greenberg LT, *et al.*: **Variation in Performance of Neonatal Intensive Care Units in the United States.** *JAMA Pediatr.* 2017; 171(3): e164396. [PubMed Abstract](#) | [Publisher Full Text](#)
47. **The Australia and New Zealand Neonatal Network.** [Available from: [Reference Source](#)
48. Prakesh S, Eugene WY, Priscilla C, *et al.*: **The Canadian Neonatal Network Annual Report 2015.** 2015. [Reference Source](#)
49. Murphy GAV, Gathara D, Abuya N, *et al.*: **What capacity exists to provide essential inpatient care to small and sick newborns in a high mortality urban setting? - A cross-sectional study in Nairobi City County, Kenya.** *PLoS One.* 2018; 13(4): e0196585. [PubMed Abstract](#) | [Publisher Full Text](#) | [Free Full Text](#)
50. Lee AC, Katz J, Blencowe H, *et al.*: **National and regional estimates of term and preterm babies born small for gestational age in 138 low-income and middle-income countries in 2010.** *Lancet Glob Health.* 2013; 1: e26–36. [PubMed Abstract](#) | [Publisher Full Text](#) | [Free Full Text](#)

Open Peer Review

Current Peer Review Status:   

Version 1

Reviewer Report 07 August 2019

<https://doi.org/10.21956/wellcomeopenres.16702.r35786>

© 2019 Battersby C. This is an open access peer review report distributed under the terms of the [Creative Commons Attribution Licence](#), which permits unrestricted use, distribution, and reproduction in any medium, provided the original work is properly cited.



Cheryl Battersby

Section of Neonatal Medicine, Imperial College London, London, UK

General comments

This is an important and well written manuscript. I commend the authors for addressing a major problem for newborn care in low resource settings – the paucity of data to evaluate health care systems. Data collection and analysis are often neglected in low resource settings because of the lack manpower. However, it is in resource-poor environments that data are ever more crucial to inform the allocation of the limited resources to bring about the biggest improvements in care and outcomes. This study demonstrates feasibility of acquiring maternity and neonatal data in low-income countries and is an exemplar for other countries.

Overall findings

This is a single centre study in Nairobi, providing important base-line data on mortality rates by birth-weight category for neonates admitted to a busy neonatal unit. 9,115 infants were admitted over an 18-month period April 2014-Dec 2015. Most babies were admitted for a short period of time (median 2 days) and most deaths occurred early in the first week of life.

There were considerable differences in outcomes for babies in different birth weight categories. Mortality among <1kg was 92%, (45 babies), 1 to <1.5kg 69% (192 babies), 1.5 to <2 kg 23% (157 babies), 2 to <2.5kg 7% (100 babies), normal (2.5 to 4kg) 5% (336 babies), macrosomia (>4kg) 2% (7 babies).

Although the range 1.5 to <2.5kg is usually classified as low birthweight, the authors suggest other studies in similar settings should sub-categorise into 1.5 to <2kg (23% mortality) and 2 to <2.5kg (7% mortality) because of the marked differences in mortality rates.

General areas to consider

1. I would suggest the abstract highlight some of the findings mentioned above.
2. The caesarean section rate amongst those admitted was 41%; how does this figure compare with the overall caesarean section rate? It would also be useful to clarify the admission criteria because in my experience, in some low-income countries, all babies delivered by caesarean sections are

admitted for a period on the neonatal unit.

3. I suggest the discussion can provide a more in-depth narrative on the utility of these data; to suggest strategies to improve outcomes considering the results. For example, the proportion of babies with birth asphyxia (42%) suggests that resources need to focus on improving perinatal care/obstetric management.

Specific areas to consider

Abstract: There is a typo in results – should read 4966/9115 for males.

Introduction: A well written introduction, highlighting the gaps in data and inconsistency in reporting. Useful to include the 15 published reports from Kenya in the last 10 years, but suggest to highlight that the case fatality is not always among those admitted to neonatal units, but are subgroups e.g. patients with blood cultures positive sepsis only, and neonatal tetanus. This is provided in the legend below the table but would be good to include in the text. Please check consistencies in the use of symbols in table and legend below it; I think the symbol for *same facility, different studies* should be two crosses on top of each other rather than one.

Results:

In results, second paragraph it reads “*however, given the lack of diagnostic facilities there were neonates with multiple diagnoses resulting in total admission episodes greater than the study population*”. Please can you clarify what this means?

It is normal for a baby to have more than one diagnosis; I also think the use of the term ‘admission episodes’ causes confusion. An *episode* in many neonatal databases usually represents a discrete period of care in a single neonatal unit.

I also think the text under corresponding Table 2 can be simplified. I suggest changing text from the current “*...*Neonates with multiple diagnoses are counted under each of these making the total admission episodes greater than the study population*” to simply “Neonates can have more than one diagnosis”.

Please clarify some of the numbers in the Results section:

In paragraph 4 “*Data on length of stay were available for 9092 out of all the 9115 patients admitted (Table 2)*”. However Table 2 for length of stay total is 9052 not 9092. Is there a typo?

In the paragraph that begins with “*Probability of in-hospital mortality or discharge alive a) overall*”, it reads “*Outcome status were available for 9074 out of the 9115 subjects (96%)*”; but this is 99% not 96%. Then it provides numbers for in-hospital deaths (840), alive (8126) but these do not agree with Table 2 which reads 839 and 8135, respectively. Table 2 shows that there are outcomes for 9082 not 9074; (8135 (discharge alive)+839 (dead)+108 (Referred) = 9082 (33 have missing)). Can these numbers please be clarified?

Figures: Suggest use dashed and smoothed lines as in Figure 1 (rather than colour) for all survival curves. This would make it practical for those printing in black and white in low resource settings.

Is the work clearly and accurately presented and does it cite the current literature?

Yes

Is the study design appropriate and is the work technically sound?

Yes

Are sufficient details of methods and analysis provided to allow replication by others?

Partly

If applicable, is the statistical analysis and its interpretation appropriate?

Yes

Are all the source data underlying the results available to ensure full reproducibility?

Yes

Are the conclusions drawn adequately supported by the results?

Yes

Competing Interests: No competing interests were disclosed.

Reviewer Expertise: Neonatology with experience working in low-income settings, neonatal database research, necrotising enterocolitis, nutrition.

I confirm that I have read this submission and believe that I have an appropriate level of expertise to confirm that it is of an acceptable scientific standard.

Reviewer Report 04 July 2019

<https://doi.org/10.21956/wellcomeopenres.16702.r35788>

© 2019 Leaf A. This is an open access peer review report distributed under the terms of the [Creative Commons Attribution Licence](#), which permits unrestricted use, distribution, and reproduction in any medium, provided the original work is properly cited.



Alison A. Leaf 

NIHR Southampton Biomedical Research Centre, University Hospital Southampton NHS Foundation Trust, Southampton, UK

This is a clear and timely article providing important base-line data on mortality rates by birth-weight category for neonates admitted to a single, large, busy neonatal unit in a maternity hospital in Nairobi. The introduction highlights the fact that there is no system for consistent and accurate data collection of this type in Kenya and this study provides a potential model.

Data were collected at time of discharge, death or referral for 9115 babies admitted during an 18 month period and analysed retrospectively. Analysis was done using the method of 'competing risk survival analysis' where the 'competing risks' were of death OR discharge alive. This is helpful, as these outcomes are unambiguous and clear, and there is a consistent denominator in the total number of admissions. A small number of babies were referred elsewhere, and thus their final survival category is unknown, but this was just over 1% of total, so does not significantly alter the key messages.

The clinical variables collected were: sex, birth weight, mode of delivery, place of delivery, admission diagnosis and outcome; birth weight was divided into 5 standard categories - ELBW (<1 kg), VLBW

(1-1.5 kg), LBW (1.5-2 kg), Normal weight (2.5-4 kg) and Macrosomia (>4 kg). The top three diagnoses were birth asphyxia (42%), preterm/LBW (22%) and neonatal sepsis (11%).

Overall mortality rate was 9.2% and, not surprisingly, this was highest in the ELBW and VLBW infants (92% and 69% respectively). Most deaths occurred between 0-24 hours (22%) and 24 hours-7 days (73%) after admission, and the survival curve for mortality was particularly steep in ELBW infants. There was a slower rise and narrower gap in VLBW, and as the authors describe, these graphs can give a clear illustration of how lengths of hospital stay, and need for increased resources, would rise as mortality rates fall in the future.

Data for the LBW group were subdivided and revealed significant differences between infants born at 1.5 to 2.0 kg and 2.0 to 2.5 kg. This gives important insight into where specific improvement initiatives should be targeted. The highest number of deaths (336) was in the 'normal' birth weight group. This group, however, covers a wide range for birth weights - from 2.5 to 4.0 kg. Analysing this data in 500 g sub-groups would probably also reveal differences which could focus improvement initiatives. Reference is made to some of the well-established neonatal data bases, such as Vermont Oxford, UK and Canadian, and over time lessons can be learned from those as more sophisticated data collection and analysis becomes possible.

The strengths of this study are its size (almost 10,000 cases), its completeness (over 99% birth weight and length of stay) and its simplicity. The limitations are well covered in the paper and include single site, lack of gestational age data (and thus inability to identify proportion of IUGR infants) and potential for inaccuracy in main diagnosis. Despite this the database provides a robust and useful tool against which progress can be monitored both within this centre and between comparable neonatal units.

Areas to consider for improvement:

1. High rate of caesarean section - is this reflective of overall C/s rate, or are more C/s babies admitted to NBU?
2. High incidence of perinatal asphyxia - as only 3% of admissions were outborn, it is hoped that combined maternity and neonatal quality improvement programs could address this within the hospital?
3. If sharing data with other units it would be important to adjust for resources available - both human resources as in medical and nursing staff, and technology/equipment.
4. Improving survival in each of the different weight categories will require somewhat different strategies - for example ELBW and VLBW infants often need more technological support. However, for all weight categories important work can be done to ensure 'essential newborn care' is optimised, with attention to hand and environmental hygiene, lactation support, Kangaroo Mother care, antibiotic stewardship etc. On-going data collection can help to show the impact of such interventions, creating a positive feedback cycle for staff.
5. Analysing the 'normal birth weight' group in 500g sub-groups might reveal important differences.
6. As commented by the previous reviewer, some information on discharge and referral criteria would also be helpful.
7. One small type error noted: in the Abstract the ratio of male patients is written as 966/9115, and should be 4966/9115

Is the work clearly and accurately presented and does it cite the current literature?

Yes

Is the study design appropriate and is the work technically sound?

Yes

Are sufficient details of methods and analysis provided to allow replication by others?

Yes

If applicable, is the statistical analysis and its interpretation appropriate?

Yes

Are all the source data underlying the results available to ensure full reproducibility?

Partly

Are the conclusions drawn adequately supported by the results?

Yes

Competing Interests: No competing interests were disclosed.

Reviewer Expertise: Neonatal nutrition; quality improvement; global neonatology including implementation of Helping Babies Survive program

I confirm that I have read this submission and believe that I have an appropriate level of expertise to confirm that it is of an acceptable scientific standard.

Reviewer Report 01 July 2019

<https://doi.org/10.21956/wellcomeopenres.16702.r35787>

© 2019 Molyneux E. This is an open access peer review report distributed under the terms of the [Creative Commons Attribution Licence](#), which permits unrestricted use, distribution, and reproduction in any medium, provided the original work is properly cited.



Elizabeth Molyneux 

Department of Paediatrics, University of Malawi, Blantyre, Malawi

This is a retrospective cohort study looking at routine data collected on all the admissions to a busy public hospital neonatal unit. Data are entered in real time, on discharge, death or referral of a baby from the hospital. The study period covers 18 months from April 2014 – December 2015, though there were no admissions from April to June 2015 because of health staff strikes.

The data collected included sex, birth weight, mode of delivery, place of delivery, admission diagnosis, length of stay and outcome (death, discharged alive or referred to another hospital). The DHIS2 dataset, routinely collected for national reporting, was insufficiently detailed and poorly collected. The study data were collected on the clinical information network (CIN) database on which more detail is recorded and the quality of data entry is monitored.

The hospital is busy, the neonatal unit admitted 91 15 newborns during the study period, despite not functioning for 3 months. The annual admissions were 4,500 with 60 babies in the unit at any time being looked after by 2-3 nurses per shift. The most common diagnosis for admission was birth asphyxia (42%) and 1/3 of all babies were born by Cesarean section. Essential newborn care was provided with the ability

to give CPAP to some babies. Four paediatricians, 6 medical officers and 4 clinical officers gave 24 hour medical cover.

Of the study group, just over half were male (55%) and 69% were of normal (2.5-<4 kg) birth weight. The median length of stay was 2 days and the overall mortality 9.2%. 22% of deaths occurred in the first 24 hours of life and 73% in the first week of life.

The data were analysed using a survival analysis approach to outcome using length of stay and birth weight which are competing risks for survival.

In this report we are given the outcomes and lengths of stay in the unit for newborns in different weight categories ELBW (<1 kg); VLBW (1-< 1.5kg); LBW 1.5kg - <2.5kg), normal birth weights (2.5 -<4 kg) and macrosomia >4kg. Unsurprisingly the extremely low birth weight babies have the earliest and highest mortality (92% case fatality rate CFR) with only one surviving longer than 4 weeks and the probability of death remaining high during the entire hospital stay. The VLBW babies had a CFR 69% with longer length of stay and as admission weights increased, mortality decreased and the risk of death over time decreased. LBW infants had a CFR of 12% and normal infants of 5% and macrosomia of 2%.

Interestingly when the LBW group were subdivided into those between 1.5 - <2 kg and 2 -<2.5kg the outcomes were very different with 23% mortality in the former and 7% in the later.

The other useful data are the number of referrals by birth weight. There were only 49 ELBW babies of whom 3 were referred; Of 280 VLBW babies, 9 were referred; 670 babies were 1- < 1.5 kg of whom 20 were referred; 1450 babies were 1.5 - <2 kg and 15 were referred, of the 6233 normal birth weight babies 61 were referred and 2 of the 352 macrosomia infants.

The authors have done these analyses to make better inter-hospital comparisons but also to try to inform decisions on the organisation of neonatal services.

The authors acknowledge the limitations when a pragmatic study is embedded in usual normal clinical care including that diagnoses may not have been correct.

It would be useful to know what are the discharge criteria, the referral criteria and are birth weights accurate?

Did the data include babies in a kangaroo mother care unit?

The LSCS rate seems very high (41%) and the birth asphyxia very common. If this diagnosis is correct much of the ability to make change lies with the obstetric department.

How many, especially of the ELBW babies had congenital abnormalities, how many had surgical conditions meriting long hospitalisation?

Is there any way of identifying nosocomial infections in the long stay infants?

This is a well written, clear and very interesting paper. It has provided data to confirm what many clinicians know about mortality and its relationship to birth weight, but using that data to inform the health systems and its reorganisation is important. With the drive to reduce neonatal mortality and improve the quality of care in LMICs, survival will improve but hospital stays will be longer and treatment more complex. Unless thought, driven by evidence such as this, is given to space, staffing, equipment and training any improvements will be held back.

Is the work clearly and accurately presented and does it cite the current literature?

Yes

Is the study design appropriate and is the work technically sound?

Yes

Are sufficient details of methods and analysis provided to allow replication by others?

Yes

If applicable, is the statistical analysis and its interpretation appropriate?

I cannot comment. A qualified statistician is required.

Are all the source data underlying the results available to ensure full reproducibility?

Yes

Are the conclusions drawn adequately supported by the results?

Yes

Competing Interests: No competing interests were disclosed.

Reviewer Expertise: Paediatrics – clinical practice, health care delivery in LIC, essential neonatal care, emergency medicine, ‘tropical’ oncology.

I confirm that I have read this submission and believe that I have an appropriate level of expertise to confirm that it is of an acceptable scientific standard.
