

arrayMap: A Reference Resource for Genomic Copy Number Imbalances in Human Malignancies

Haoyang Cai¹, Nitin Kumar¹, Michael Baudis*

Institute of Molecular Life Sciences, University of Zurich, Zurich, Switzerland

Abstract

Background: The delineation of genomic copy number abnormalities (CNAs) from cancer samples has been instrumental for identification of tumor suppressor genes and oncogenes and proven useful for clinical marker detection. An increasing number of projects have mapped CNAs using high-resolution microarray based techniques. So far, no single resource does provide a global collection of readily accessible oncogenomic array data.

Methodology/Principal Findings: We here present arrayMap, a curated reference database and bioinformatics resource targeting copy number profiling data in human cancer. The arrayMap database provides a platform for meta-analysis and systems level data integration of high-resolution oncogenomic CNA data. To date, the resource incorporates more than 40,000 arrays in 224 cancer types extracted from several resources, including the NCBI's Gene Expression Omnibus (GEO), EBI's ArrayExpress (AE), The Cancer Genome Atlas (TCGA), publication supplements and direct submissions. For the majority of the included datasets, probe level and integrated visualization facilitate gene level and genome wide data review. Results from multi-case selections can be connected to downstream data analysis and visualization tools.

Conclusions/Significance: To our knowledge, currently no data source provides an extensive collection of high resolution oncogenomic CNA data which readily could be used for genomic feature mining, across a representative range of cancer entities. arrayMap represents our effort for providing a long term platform for oncogenomic CNA data independent of specific platform considerations or specific project dependence. The online database can be accessed at <http://www.arraymap.org>.

Citation: Cai H, Kumar N, Baudis M (2012) arrayMap: A Reference Resource for Genomic Copy Number Imbalances in Human Malignancies. PLoS ONE 7(5): e36944. doi:10.1371/journal.pone.0036944

Editor: Ying Xu, University of Georgia, United States of America

Received: January 10, 2012; **Accepted:** April 16, 2012; **Published:** May 18, 2012

Copyright: © 2012 Cai et al. This is an open-access article distributed under the terms of the Creative Commons Attribution License, which permits unrestricted use, distribution, and reproduction in any medium, provided the original author and source are credited.

Funding: HC is supported through a personal grant from the China Scholarship Council. NK and MB had received support through the Krebsliga Schweiz and the University of Zurich's Research Priority Program Systems Biology. The funders had no role in study design, data collection and analysis, decision to publish, or preparation of the manuscript.

Competing Interests: The authors have declared that no competing interests exist.

* E-mail: michael.baudis@imls.uzh.ch

These authors contributed equally to this work.

Introduction

Genomic copy number abnormalities (CNAs) are a relevant feature in the development of basically all forms of human malignancies [1]. Many genomic imbalances are recurrent and display tumor-specific patterns [2,3]. It is believed that these genomic instabilities reveal mutations in tumor suppressor genes and oncogenes which eventually result in a clone of fully malignant cells. Investigation of CNA hot spots (chromosomal loci frequently involved in CNA) has proven to be an effective methodology to identify novel cancer-causing genes [4,5]. On a systems level, CNA data along with expression or somatic mutation data is used to detect pathways altered in cancers and to deduce functional relevance of pathway members [6,7]. Since many CNAs have been attributed to specific tumor types or clinical risk profiles, in some entities copy number profiling is employed to characterize different biological as well as clinical subtypes with implications for treatment and individual prognosis. Subtype-associated CNA regions are used to predict causative genes, furthering understanding of biological differences and leading to discovery of new therapeutic targets [8,9].

Throughout the last two decades, molecular-cytogenetic techniques have been applied to scan genomic copy number profiles in virtually all types of human neoplasias. For whole genome analysis, these techniques predominantly consist of chromosomal and array comparative genomic hybridization (CGH), including CNA detection by cDNA and single nucleotide polymorphism (SNP) arrays [10–12]. While chromosomal CGH has a limited spatial resolution of several megabases, the resolution of recent array based technologies (aCGH) is mainly limited due to cost/benefit evaluations instead of technical obstacles. In this article, we use the terms “array CGH” and “aCGH” for all technical variants of whole genome copy number arrays. This includes e.g. single color arrays for which regional copy number normalization is performed through bioinformatics procedures applied to external references and internal data distribution.

The flood of new insights into structural genomic changes in health and disease has led to an increased interest in genomic data sets in genetic and cancer research. Several systematic studies of CNAs across many cancer types have been performed [13,14].

These efforts attempt a more complete understanding of functional effect of CNAs in the context of cancer.

The exponential increase of high resolution CNA datasets offers new challenges and opportunities for large-scale genomic data mining, data modeling and functional data integration. Several online resources have been developed, focusing on different aspects of data content as well as representation [6,15–19]. An overview of some of the prominent examples is given in Table 1. In principle, these databases facilitate access and utilization of CNA data. However, they are limited to specific aCGH platforms and/or single institutions as well as limited disease categories, or, as in the cases of GEO [15] and Ensembl ArrayExpress [16], mainly serve as raw data repositories. To the best of our knowledge, no single data source does yet provide an extensive collection of high resolution oncogenomic CNA data which readily could be used for genomic feature mining, across a representative range of cancer entities.

Here we present “arrayMap”, a web-based reference database for genomic copy number data sets in cancer. We have generated a pipeline to accumulate and process oncogenomic array data into a unified and structured format. The resource incorporates associated histopathological and clinical information where accessible.

So far, arrayMap contains more than 40,000 arrays on 224 cancer types from five main data sources: NCBI GEO, EBI ArrayExpress, The Cancer Genome Atlas, publication supplements and user submitted data. Samples of interest can be browsed, visualized and analyzed via an intuitive interface. Computational tools are provided for biostatistical data analysis such as CNA clustering for case specific or for subset data and basic clinical correlations. arrayMap is publicly available at www.arraymap.org.

Results

Data Content

Our combination of both “top-down” (publication driven) as well as “bottom-up” (array data driven) approaches allowed us to identify a comprehensive set of accessible aCGH based cancer CNA data sets and to estimate the ratio of accessible data of the overall published/deposited data.

As main result of the array data driven approach, we extracted 495 series comprising of 32002 arrays, generated on 237 platforms from NCBI's GEO. Among those, raw data files of approximately 29000 whole genome arrays were suitable for inclusion into our data processing pipeline. When reviewing the content of AE, we

found that the majority of AE cancer genome data sets were also submitted to GEO. At the time of writing, 11 datasets including 712 arrays not present in GEO had been processed based on AE specific series. Detailed information on the GEO/AE data sets is provided in Table S1.

The top-down procedure was based on our group's continuous monitoring of cancer related articles utilizing genome copy number screening approaches, as established for our “Progenetix” project (www.progenetix.org; [19]). The census date for the literature based data collection was August 15 2011. At this point, we had identified 931 articles discussing a total of 53213 genomic cancer CNA profiles based on aCGH techniques. Of these, 8728 cases out of 199 articles so far had been extracted from publication related sources (e.g. supplementary data tables) and annotated and made been accessible through Progenetix. This data included cases for which only supervised information but no probe data was available (e.g. author annotated Golden Path or cytogenetic CNA regions). Literature based data sets containing probe specific data or with the respective data presented to us by the authors (640 samples) were included into our arrayMap data processing pipeline.

The data content of arrayMap is summarized in Table 2. Current numbers on the website will include changes based on ongoing annotation efforts (i.e. addition of data sets, removal of low quality arrays).

As a by-product of our data collection and annotation efforts, we are able to provide estimates of content and trends for the platform usage and cancer entity coverage for the majority of published data. According to the assigned ICD-O 3 (International Classification of Diseases for Oncology, 3rd Edition) code and descriptive diagnostic text, breast carcinoma predominates as single largest clinical entity with 6459 arrays. Table S2 presents sample sets in arrayMap classified by ICD-O code.

The most widely available array CGH platforms are either based on large insert clones (BAC/P1 arrays) or based on shorter single-stranded DNA molecules (oligonucleotide arrays), which may or may not include single-nucleotide polymorphism specific probe sequences (SNP arrays). Also, although designed for gene expression profiling, cDNA arrays were used by several laboratories for measuring genomic copy number changes. Although all these platforms are considered suitable for whole genome CNA analysis, their probe densities and other parameters can affect specific features of the analysis results [20–23]. Table S3 lists the general platform types and corresponding overall numbers of the data registered in arrayMap.

Table 1. Prominent online resources of genomic data.

Name	Address	Platform(s)	Data format	Comment
GEO [15]	www.ncbi.nlm.nih.gov/geo	263	raw & normalized probe signal intensity	largest microarray data repository
ArrayExpress* [16]	www.ebi.ac.uk/arrayexpress	16	raw & normalized probe signal intensity	many duplicate data in GEO
TCGA [6]	cancergenome.nih.gov	1	segmentation data	raw probe data is limited to download
CanGEM** [17]	www.cangem.org	38	normalized probe signal intensity	including many types of microarray data
CaSNP [18]	cistrome.dfci.harvard.edu/CaSNP	8	average copy number & graphic	focus on SNP array data
Progenetix [19]	www.progenetix.org	235	ISCN*** & golden path	data from publications

Data up to 29 April, 2011.

*excluding data both in GEO and ArrayExpress.

**statistical information only including CGH, SNP and cDNA data.

***International system for human cytogenetic nomenclature.

doi:10.1371/journal.pone.0036944.t001

Table 2. aCGH data integrated in arrayMap.

Data Source	Arrays	Cases	Series	Platforms	Publications
GEO	32002	25728	495	237	490
ArrayExpress	712		11	16	11
TCGA	7249	3594	19	1	*
Publication Supplements	>4578**	4578			137
Author Submission	556	539	8	7	

Data up to 29 April, 2011.

*Due to lack of publication information, there may be a small amount of duplicate data in GEO.

**Array number may be higher than case number since reported results per case occasionally may be based on more than one array. The number does not include data presented both in publication supplements as well as GEO.

doi:10.1371/journal.pone.0036944.t002

In reviewing the technical platform composition, two related trends become apparent (Figure 1). Originally developed in groups with expertise in molecular cytogenetics and cancer genome analysis, printed large insert clone arrays (BAC/P1) were the first whole genome CNA screening tools with a spatial resolution surpassing that of chromosomal CGH. Other groups re-employed cDNA arrays, developed for expression screening, for genomic hybridizations. However, over the last years one can observe the overwhelming use of various industrially produced oligonucleotide array platforms, which compensate their low single probe fidelity through a probe density at 1–3 orders of magnitude higher than common for BAC/P1 arrays. Another reason for the success of oligonucleotide arrays is the integration of SNP specific probes, which in principle allows to use of the same experiments for genetic association studies and the evaluation of copy number neutral loss of heterozygosity regions [12,24,25].

Data Access and Usage Scenarios

Based on our experience from the Progenetix project, a strong emphasis was put on a user friendly data interface. Here, we followed a “dual user type” scenario: Users without bioinformatics background should be able to intuitively visualize core data features as well as to perform standard analysis procedures, while for bioinformaticians the formatted database content should be accessible to use with their analysis tools of choice.

Query interface. Data browsing in arrayMap is based on two types of query methods: search by experimental series metadata and search by sample features.

In the series query form, users can perform various search options by specifying (i) descriptive diagnosis text; (ii) disease classification (ICD-O 3 code(s)); (iii) disease locus (ICD topography code(s)); (iv) PubMed ID; (v) technique(s); (vi) series ID. For sample specific queries, additional features are available: sample ID; platform ID or description; and single or combined regional CNAs. Users can input gene name(s) in “regional CAN” search field. When at least two characters are entered into the field, suggestions based on a HUGO gene list are displayed for selection. Gene selections will be converted to genomic locations.

In the results table, associated array information is displayed. A number of links to additional and/or outside data is provided, according to the information available: the corresponding PubMed entries; the original GEO/AE accession display page for more complete information; the case and publication entries on the Progenetix website for further analysis; and importantly the array specific data visualization page.

Data download options. On pages resulting from sample queries or sample data processing, users are presented with options to download sample data based on the current query’s return. Currently, three different file types are offered: JSON files, tab separated feature files and segments list files. These files enable bioinformaticians to perform further analyses based on their tools of choice. Particularly, the JSON format can be used for direct database import (e.g. MongoDB) or can be deparsed by common libraries (e.g. JSON.pm), or being read into web applications.

Array probe data visualization. In the array plot interface, original plots of genomic array data sets can be searched and visualized (Figure S1). Default threshold parameters which were either provided with the data or assigned during the initial visualization will be loaded. In single array visualization, the general view of probe distribution and post-thresholding segmentation results are displayed for the whole genome as well as for each individual chromosome. If multiple arrays are retrieved, users can select sample data for downstream analysis procedures. Figure S2 shows the screenshot of single array visualization.

Users can segment the raw data values and re-plot the results after revising the following parameters:

- Golden path edition, default HG18/NCBI Build 36. This is still the commonly used version of the human reference genome assembly. At the moment, coordinates of probes from all platforms were remapped to HG18. For the near future, we intend to allow for a selection of updated genome editions.
- Chromosomes to plot, default 1 to 22. Single or all chromosomes can be selected for re-plotting. To avoid gender bias, most platforms do not contain probes in chromosome X and Y during the design.
- Loss/gain thresholds. Cut-offs from which a segment is considered a genomic loss or gain. The optimum thresholds may vary between platforms.
- Region size in kb. Sets a filter to remove CNA below (e.g. probable noise) or above (e.g. exclude non-focal CNA) a certain size range.
- Minimal probe numbers for segments. This parameter can be used to limit the minimal number of probes required for a segment to be considered (e.g. to remove aberrant segmentation due to probe level noise). Empirical examples would be values of 2–3 for high quality BAC arrays and 6–10 for Affymetrix SNP 6 arrays.
- Plot region. Single genomic region to be plotted, overriding the chromosome selection above. When selected, plots with this region will be generated for all current arrays. This is valuable to e.g. display the CNA status and copy number transition points for specific genes of interest (Figure S3).

Zoom-in visualization of focal CNA. Figure 2 shows the visualization of focal genomic imbalances, e.g. to identify genes of interest targeted by focal CNA. The whole genome view of GSM535547 (human high grade glioma sample analyzed by Agilent Human Genome CGH Microarray 244A) shows a small regional deletion in chromosome 9p21. When plotting the approximate locus of the deletion (specified as chr9:21600000-22400000), genes, probes and chromosome bands in this zoomed in region are shown. Two genes, MTAP and CDKN2A can be seen as being localized in a potential homozygously deleted region. The focal deletion of these known tumor suppressor genes [26,27] points to their specific involvement in the glioblastoma sample analyzed here.

Querying compound CNA. The concept of focal CNA detection can be integrated with a global search for arrays

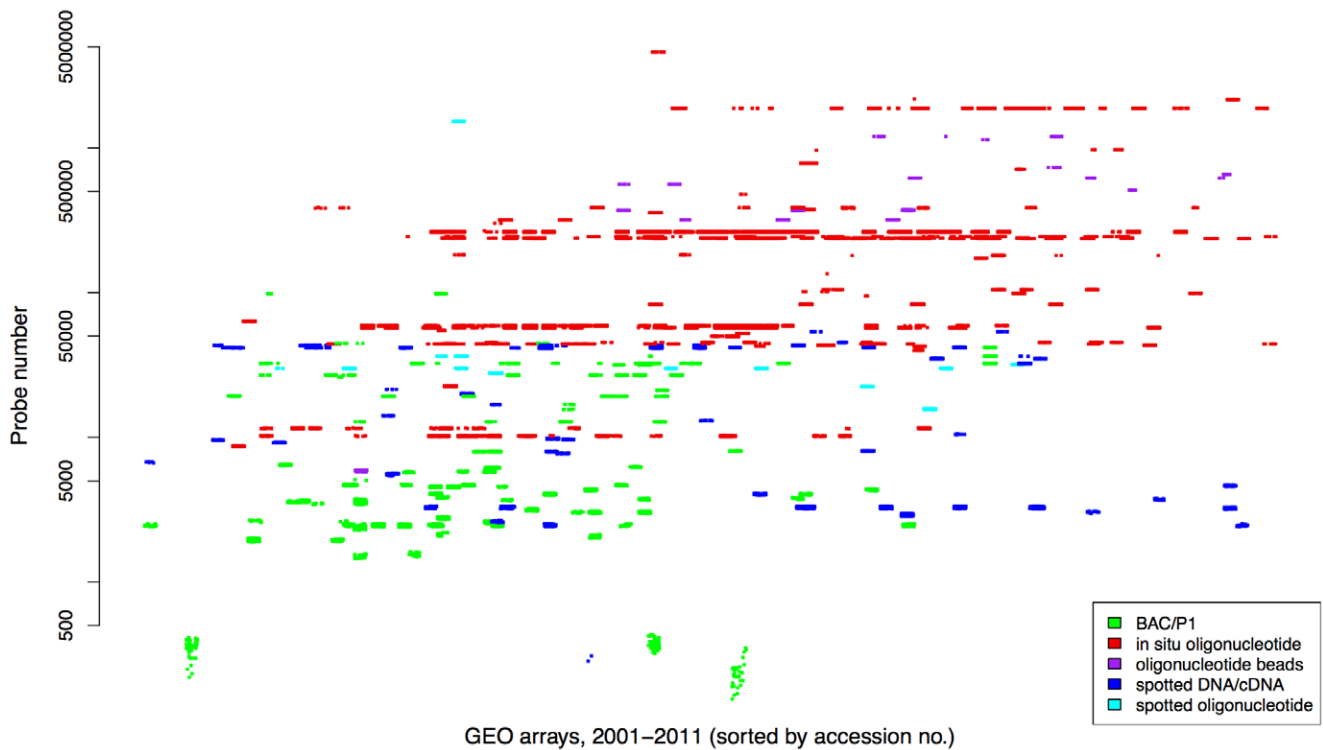


Figure 1. Distribution of resolutions and techniques of GEO platforms. Each point represents a genomic array. The Y axis is labeled with probe number in log scale. The X axis denotes the time sequence of array data generation. From left to right are years from 2001 to 2011. doi:10.1371/journal.pone.0036944.g001

containing gene specific regional imbalances. As an example, we demonstrate the search for arrays displaying imbalances in 4 gene loci associated with glioblastoma: EGFR, a transmembrane receptor and proto-oncogene [28]; PTEN, a tumor suppressor gene [29]; ASPM, frequently overexpressed in glioblastoma relative to normal brain tissue [30]; and CDKN2A (see above). In the “Search Samples” form, the “Match (Multiple) Regions & Types” can be used to specify the genomic regions of those four genes including the expected CNA type: for EGFR (chr7:55054219-55242524:1), PTEN (chr10:89613175-89718511:-1), ASPM (chr1:195319885-195382287:1) and CDKN2A (chr9:21957751-21984490:-1), respectively. When executing the query, these regions were matched with the whole database and returned cases which have imbalances overlapping all these regions. When excluding controls and “worst quality” datasets, 303 out of 42421 arrays could be identified matching all four CNA regions. In addition to glioblastoma, several other types of cancer cases were among the results, including e.g. neuroblastomas, breast carcinomas, melanomas and lung carcinomas, which is in accordance with some previous observations [31–34]. CNA and associated data of those cases can be processed by online tools for further analysis and visualization (Figure S4) or downloaded for offline processing.

Copy number profiling of selected cancer entities. One aim of arrayMap is to allow researchers to conveniently perform aCGH meta-analysis across different platforms. By selecting a single or several cancer entities e.g. based on their ICD entity codes or diagnostic keywords, users are able to generate disease specific CNA frequency profiles or to compare profiles of different cancer types.

As an example, we used ICD-O code 9440/3 (glioblastoma, NOS) to query the database. 1478 arrays from 25 publications

were returned and passed to our suite of online analysis tools. Chromosomal ideograms and histograms were generated representing the frequency of copy number aberrations identified over the whole dataset (Figure 3A). In the overall aberration profile, the most common genomic imbalances included whole chromosome 7 gain and chromosome 10 loss, as well as focal gains e.g. on bands 1q21 and 17q21. In our example dataset, a prominent focal deletion hot-spot was centered around 9p21.3 (921 of 1478 arrays, 62.31%) which had been discussed previously [35]. The distribution of CNAs over the individual arrays was visualized through a matrix plot (Figure 3B). As additional information to the frequency histograms, this form of visualization facilitates e.g. the detection of CNA patterns among individual arrays as well as the concordance of individual CNAs (e.g. here the arm-level changes in chromosome 7 and 10).

In the matrix plot, clicking on a certain segment would open the related view in the UCSC genome browser [36], for detailed information related to this genomic region (SVG plot only). The plot order of arrays can be re-sorted according to ICD morphology, ICD topography, clinical group or PubMed ID, which can be helpful in associating CNA patterns to external classification categories. For the selected classification criterion (default: ICD morphology), regional CNA frequencies for cases matching the different values will be visualized through a heatmap (Figure 3C); this feature is especially useful when comparing a number of different primary classification criteria.

An Overall Genomic Copy Number Profile of Cancer

Our high quality core dataset in arrayMap was used to generate an overall cancer copy number aberration profile based on 29,137 arrays (Figure 4). This data represented 177 cancer types according to ICD-O 3 code, with 59 types among them contained

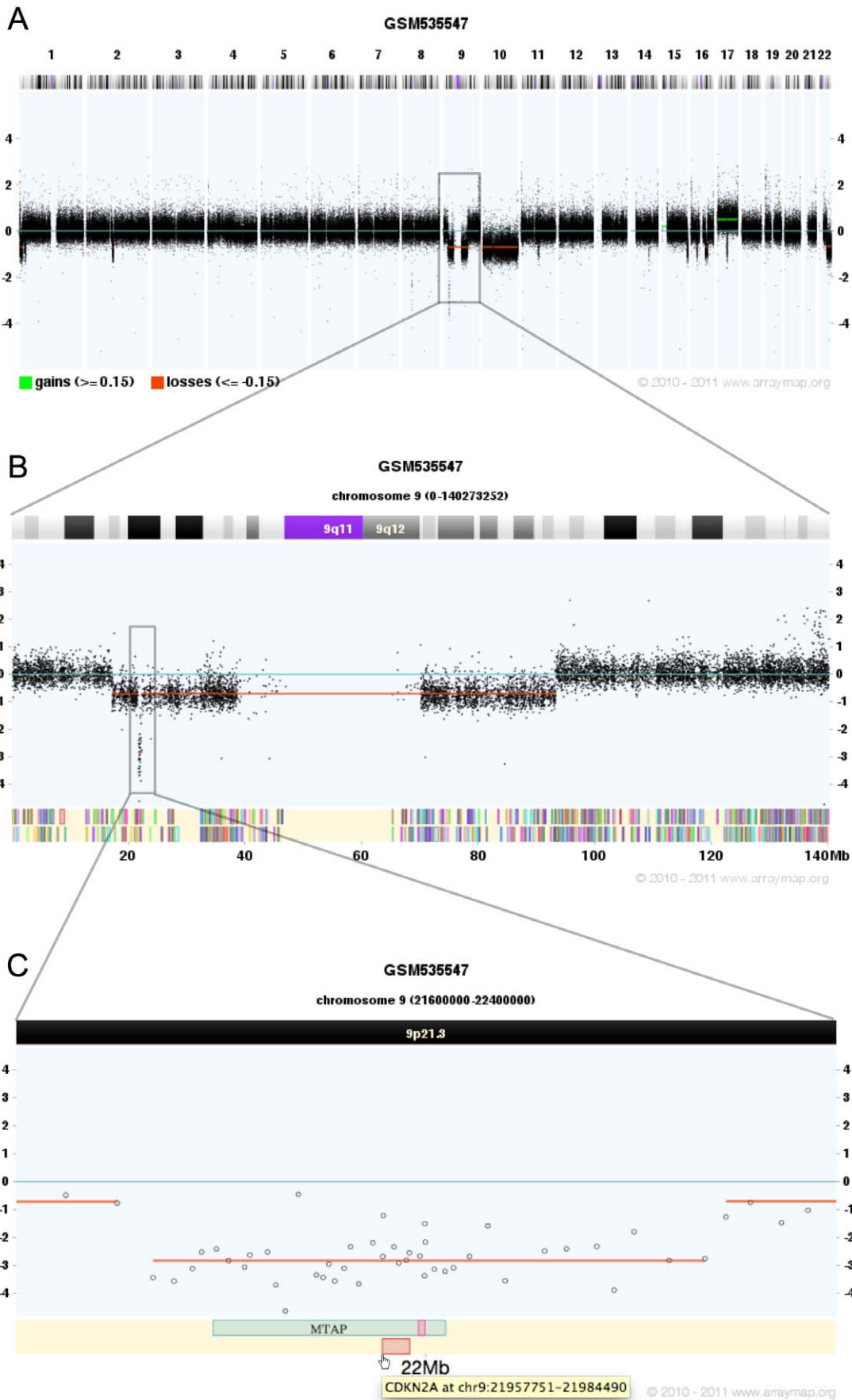


Figure 2. Zoom-in visualization of focal CNA. (A) GSM535547 (human high grade glioma, Agilent CGH 244A) shows high quality of probe hybridization signal. CNAs are easy to distinguish. (B) When zoom-in the whole chromosome 9, an approximately 80 MB deletion is displayed, with two breakpoints located in p and q arm respectively. In addition, a small regional deletion in 9p21 is quite clear. Color bars in lower region of the panel represent 848 genes located in chromosome 9. (C) Zoom in the potential homozygously deleted region in 9p21 by specifying the exact region: chr9:21600000-22400000. The zoomed-in plot shows probes, chromosome band and two tumor suppressor genes, MTAP and CDKN2A. Gene name and location will be given while mouse hover. They link to UCSC genome browser with additional information. doi:10.1371/journal.pone.0036944.g002

more than 50 arrays. Overall, one of the most common genomic alteration is copy-number gain of chromosome band 8q24, which is found in 30% of total samples. According to the COSMIC [37] database, the most significant cancer gene in this region is MYC. It is a well-documented oncogene codes for a transcription factor that is believed to regulate the expression of 15% of all genes, including genes involved in cell division, growth, and apoptosis [38,39]. Other common imbalances observed in at least 25% of oncogenomic arrays included gains of regions on e.g. 17q21 (29%), 1q21 (33%) and loss of regions on e.g. 8p23 (32%) and 9p21

(25%), including focal deletions of the CDKN2A/B locus (Figure 2).

While the overall CNA frequency distribution points towards DNA features targeted in multiple entities, this information is insufficient for deriving molecular mechanisms associated with specific cancer types. The genomic heterogeneity of different neoplasias is reflected in the varying patterns of regional CNA frequencies. Based on our core dataset, we have generated a heatmap-style visualization of frequency profiles for all ICD-O entities containing more than 50 arrays (Figure S5). The striking

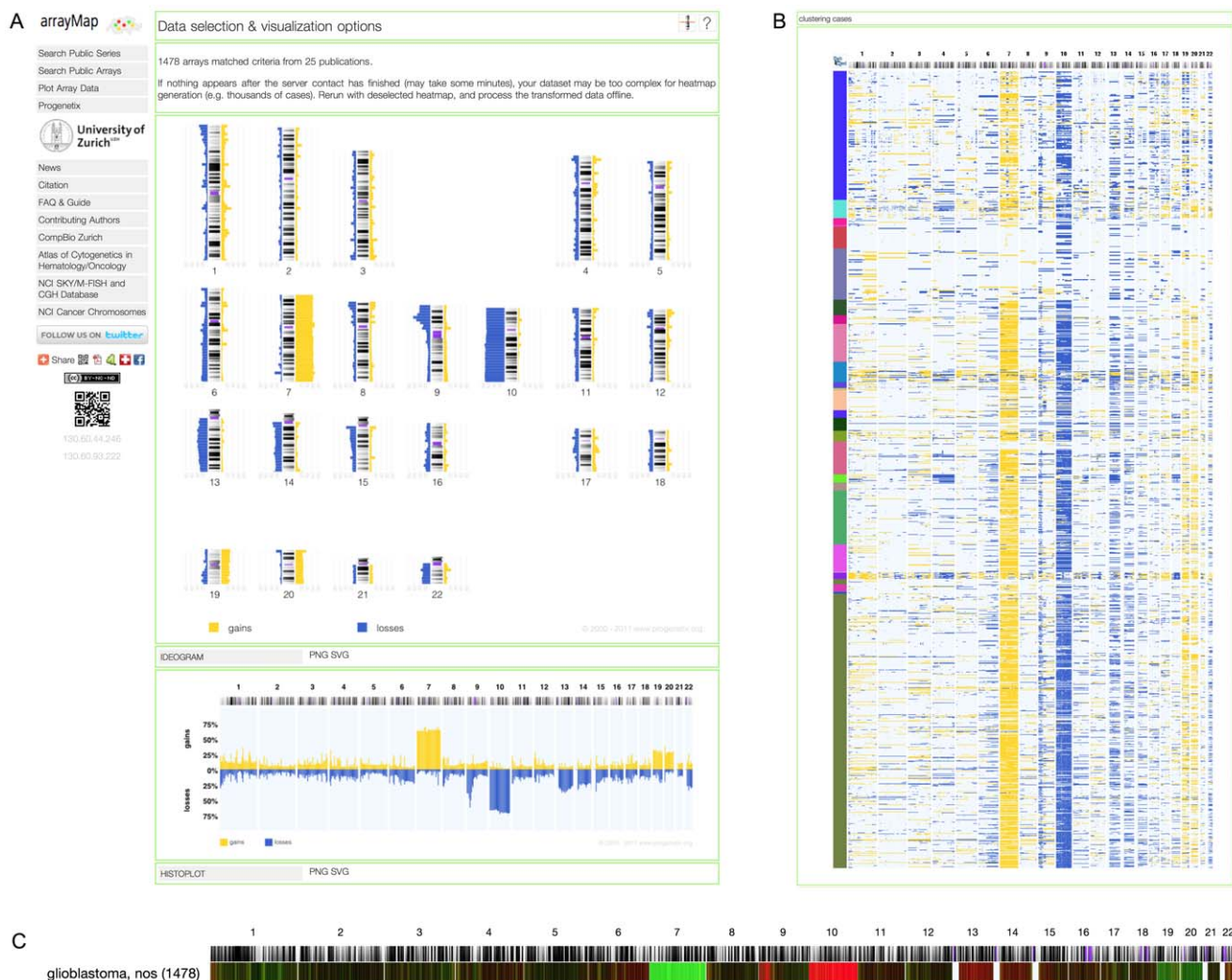


Figure 3. Copy number profiling of glioblastoma. (A) Chromosomal ideogram and histogram showing frequency of copy number aberrations. Percentage values corresponding to gains (yellow) and losses (blue) identified over the whole dataset. The most frequent imbalances include gain of chromosome 7 and loss of chromosome 10, 9p21.3. (B) Matrix plot of 1478 glioblastoma cases. The Y axis represents individual samples. The distribution of genomic copy number imbalances reveals the individual aberration patterns of glioblastoma. (C) Heatmap of regional CNA frequencies for 1478 arrays. The intensity of green and red color components correlates to the relative gain and loss frequencies, respectively. If dataset contains cancer subtypes, cancers with similar CNA frequency profiles will be clustered together, such that differences between subtypes will be revealed (e.g. see Figure S4H).

doi:10.1371/journal.pone.0036944.g003

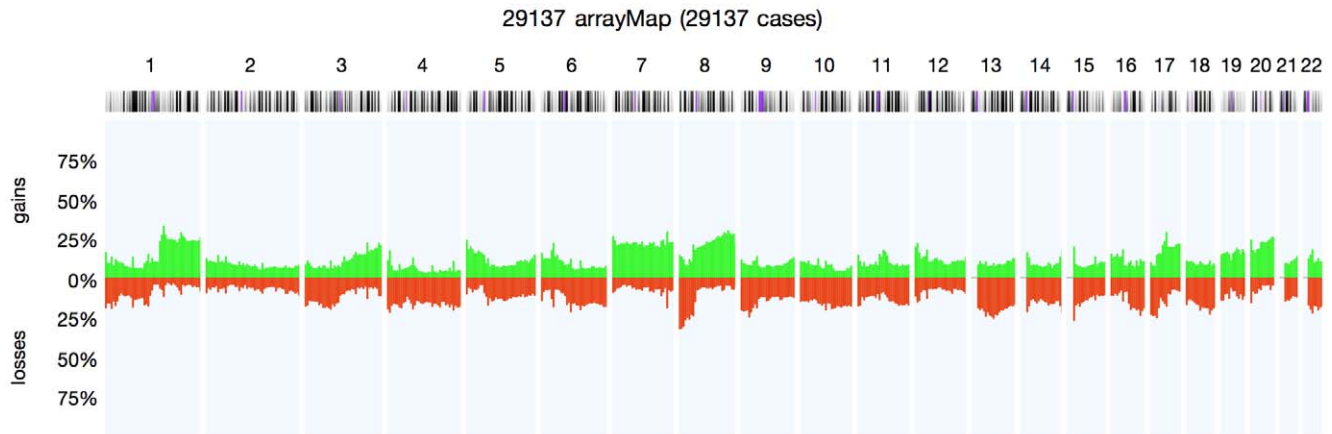


Figure 4. The overall cancer copy number aberration profile consisted of 29137 arrays. This plot represents 177 cancer types according to ICD-O 3 code. Percentage values in Y axis corresponding to numbers of gains (green) and losses (red) account for the whole dataset. doi:10.1371/journal.pone.0036944.g004

patterning of the CNA profiles indicates the non-random occurrence of CNAs, and should be seen as an invitation to explore e.g. CNA similarities shared by separate histopathological entities, as a way to transpose knowledge about pathophysiological mechanisms.

Discussion

arrayMap was developed to facilitate the progress of oncogenic research. Our aim is to provide high-quality genomic copy number profiles of human tumors, along with a set of tools for accessing and analyzing CNA data. The service has been implemented with a straightforward web interface, including search options for CNA features and clinical annotation data. All assembled datasets are processed into platform independent segmentation and, for the vast majority of arrays, probe level data files, and are presented in consistent formats. Importantly, the direct access to precomputed probe level data plots supports a rapid evaluation of experiments for features of interest. As a curated database using standardized annotation schemes (e.g. ICD classification), arrayMap facilitates the exploration of cancer type specific CNA data, as well as the statistical association of genomic features to clinical parameters.

arrayMap is a dynamic database that is being continuously expanded and improved. We will review the existing and newly published articles to update the database periodically. Over the past decade, we have witnessed a rapidly increasing number of aCGH publications, which gives us sufficient evidences to anticipate that cases in our database will continue to be deposited at a high rate. Although arrayMap is not a user driven repository, we welcome and support users interested in using the site for yet undisclosed data, if they agree on data sharing upon publication.

Although, in contrast to the continuous data from expression analysis, copy number analysis explores discrete value spaces (countable number of DNA copies, for segments defined by genomic base positions), interpretation of the data can vary due to different low level (e.g. signal/background correction) and higher level (e.g. segmentation algorithms, regional or size based filtering) procedures. In that respect, we have to emphasize that the results of our data processing and annotation procedures are open to scrutiny. We encourage a critical review of individual results, and are open for suggestions regarding improved processing procedures for specific platforms.

In this paper, we have provided example scenarios of using arrayMap on different levels, i.e. locus centric and for entity profiling. We believe that systematic analyses will help researchers to discover features which are indiscernible in individual studies, and thus bring new insights for understanding of disease pathology and the development of new therapeutic approaches [40–43]. We expect that researchers will integrate arrayMap data with their own analysis efforts, e.g. to increase sample size or for result verification purposes. We hope that this database will promote further evolution of microarray data meta-analysis. ArrayMap provides access to more than 200 tumor types, which makes it suitable for research across cancer entities. Furthermore, normal sample controls are of vital importance for genomic imbalances studies. ArrayMap includes more than 3000 normal samples from healthy individuals or from normal tissues of cancer patients. These data could be integrated as reference dataset e.g. to account for copy number variation data superimposed on the tumor profiling results.

In the near future, with the continuous accumulation of very high resolution CNA data from genomic arrays and next-generation sequencing experiments, it will become possible to integrate these data into systems biology methods to elucidate effects of genomic instability, and describe the results from more perspectives. Envisioned examples would be e.g. the identification of genes that are involved in metastasis and treatment response; identification of chromosomal breakpoints distribution in cancer; and modeling functional networks in cancer by systems biology approaches.

Methods

Dataset Collection

Raw experimental data from a variety of platforms and repositories were extracted. They were converted to an uniform format which is suited to our reanalysis and visualization system. After a series of parsing procedures, the called copy number data is stored in arrayMap. The flowchart of arrayMap data collection and analysis is as shown in Figure 5. Five main data sources are integrated into arrayMap:

GEO/AE. For extracting appropriate data Series from GEO/AE, two basic criteria have to be fulfilled. First, the raw data has to be from human malignancies analyzed by BAC, cDNA, aCGH or oligonucleotide arrays. Second, the array platform must be genome wide, with the optional omission of the sex chromosomes.

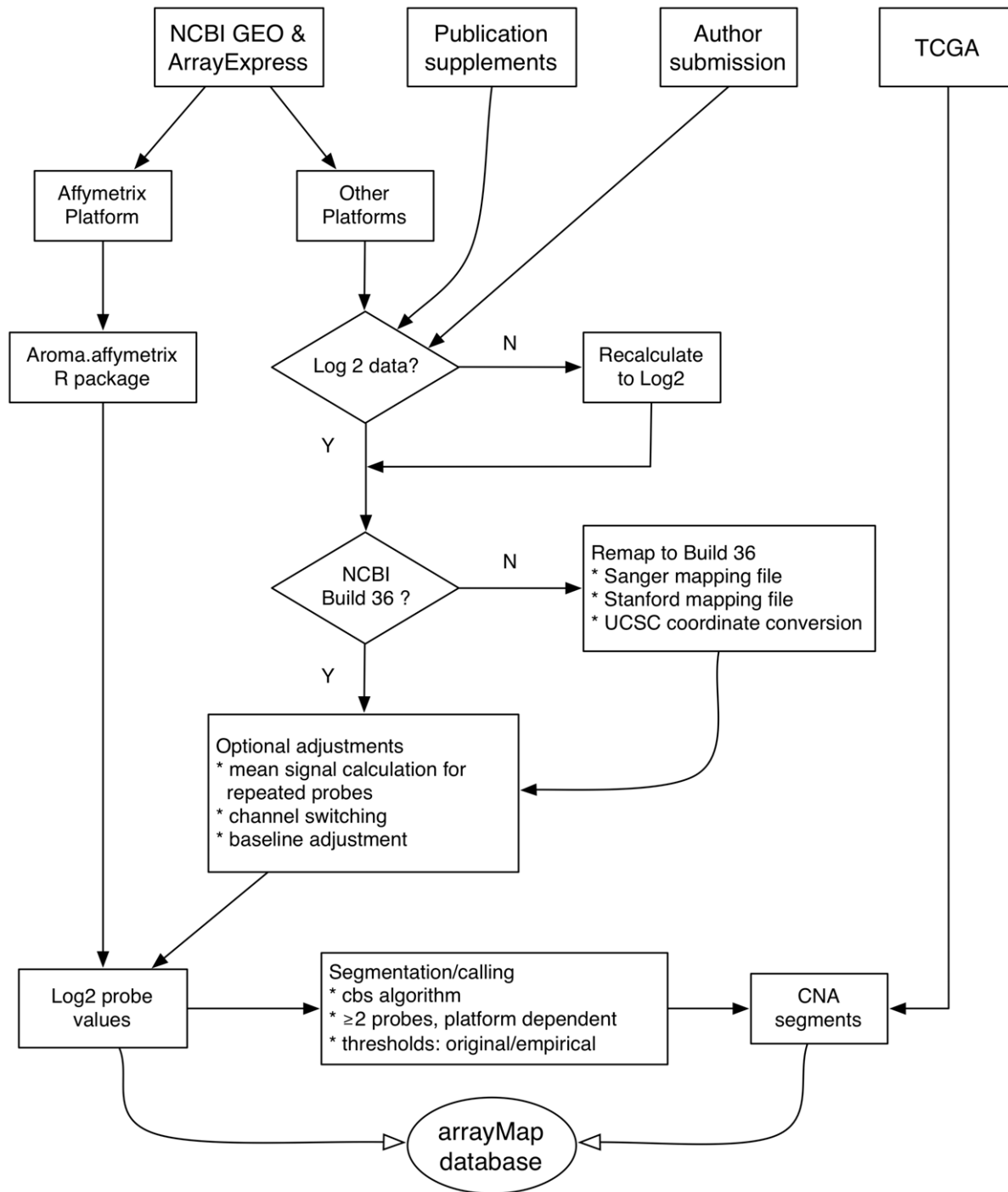


Figure 5. The flowchart of arrayMap data collection and analysis procedures. Publicly available raw data or segmented data was collected from the respective data sources. Files were re-processed by distinct procedures, according to the different data types. Probe coordinates were remapped to the most commonly encountered human reference genome assembly (NCBI Build 36/hg18). All probe specific ratios were converted to log2 values. Thresholds for genomic gain and loss were obtained from the original publications or series annotations; if not available, empirical thresholds were assigned. A minimum of 2 probes was required for calling a CNA segment, with higher values used on high-density arrays and/or in cases of excessive probe level noise. Processed probe and segment information was converted to uniform formats and stored in per-sample text files, which are accessed through the arrayMap web applications. doi:10.1371/journal.pone.0036944.g005

Chromosome or region specific arrays were excluded because they were not able to reveal the whole genomic profile of the respective cancer. Associated clinical data was extracted if available.

TCGA. Segmentation data with available clinical information was extracted and incorporated into the database. Due to data sharing restrictions, TCGA data is an exception in that, so far no probe level data is incorporated into arrayMap. This exception

was accepted since users will be able to access individual TCGA datasets through the projects web portal at <http://tcga-data.nci.nih.gov/tcga/>.

Publications. Many aCGH datasets can be found in the text or supplementary files of publications. In order to collect data from publications, we relied on our Progenetix project's setup. Data in Progenetix is manually curated. The collection strategies are:

- literature mining using complex search parameters through PubMed
- identification of called aCGH data, in GP annotation or tabular format (article, supplementary tables)
- evaluation of supplementary files for probe specific data tables
- follow-up on article links outs, to repository entries or referenced datasets

User submission. User submitted data was provided in a number of formats which were converted to the standard format as described. Although we accept and support private datasets, we insist on integration of at least the genomic and core clinical data (e.g. disease classifiers) upon publication of the datasets analysis results.

Dataset Analysis

Probe remapping. A pipeline has been generated for determining the genomic positions for the tens to hundreds of thousands array probes with reference to a common genome Golden Path edition. For each array platform, the genome positions of probes were remapped to the current commonly used version of the human reference genome assembly (NCBI Build 36.1/hg18). Specific mapping procedures were employed for different types of probes. BAC clones were firstly remapped according to the clone sets information of Sanger/DECIPHER database [44]. If the probe position was not available, the UCSC Genome annotation database [36] (release hg18) was used for compensation. After these two steps, a mean of 98% of the BAC clones were remapped. For IMAGE clone sets, only the UCSC Genome annotation database was used. The average remapping rate of IMAGE clones was 91%. Affymetrix raw CEL data files were analyzed based on hg18 library files, namely the output segments have hg18 coordinates. The summary of the percentage of mapped probes is given in Table 3. The mapping details for each platform can be found in the (Table S4).

Probe signal normalization. The array data available was given in a variety of formats, most frequently as log₂ ratio of probe hybridization intensity. In order to make data from different platforms directly comparable, all other types of normalized values were converted to log₂. For dye swap experiments, reference/tumor intensity ratios data was “reversed” representing a tumor/reference value. For some two-color arrays for which only raw signal intensity were provided, the normalized log₂ ratio for each probe was calculated by.

$$r = \log_2((T_s - T_b)/(R_s - R_b)).$$

where T_s and T_b represent tumor sample intensity and tumor channel background intensity respectively, and R_s and R_b represent reference sample intensity and reference channel background intensity respectively. If multiple instances of the same clone exist, the average signal intensity of the certain clone was considered.

To call gains and losses according to normalized log₂ ratio is an important step to identify copy number imbalances. For each re-analyzable dataset, related publications were explored to obtain original threshold descriptions. If this information was not available, empirical thresholds were assigned and resulting CNA calls were visually compared with probe value plots. Processing method and threshold information for each array are provided in the Table S5.

Affymetrix genotyping arrays. For the widely used Affymetrix GenomeWide SNP arrays, raw CEL files were downloaded and underwent a massive re-analysis using the R package *aroma.affymetrix* [45] with the CRMAv.2 method [46]. During the processing step, approximately 50 normal sample arrays were employed as a reference set for each array type to reduce the noise level. Normal tissue arrays from different labs were extracted and used to build the reference dataset. In order to obtain high quality arrays, we excluded arrays which contain segments greater than 3 mega-bases, since copy number variations are always smaller than 3 mega-bases. The list of normal tissue reference arrays is given in Table S6.

Quality control. In our review of array data deposited in GEO or collected from publication supplements we encountered a large number of individual data sets with insufficient or limited probe quality. Also, for samples of unprocessed raw data (e.g. Affymetrix CEL files), we found that QC measures reported previously (e.g. call rate [47], NUSE [48], RLE [48]) only had a limited accuracy for detection of arrays with inadequate probe level data. Currently, the most viable strategy for quality assessment of processed, heterogeneous copy number arrays is the visual inspection of probe plotting and segmentation results through an experienced researcher. For the first arrayMap edition we generated a quality classification system, which contains a total of 4 categories based on inspections of genome-wide array plots:

- Excellent. Probe signal distribution is significantly different between normal regions and imbalance regions. Signal baseline is distinct and unique, making segmentation threshold realistic appearing. Chromosomal changes are pretty clear.
- Good. In general good quality. Probe signal may contain some noise, but tolerable. Chromosomal changes are distinguishable.

Table 3. Percentage of remapped probes according to platform types.

Platform type	Average mapping rate	Number of arrays	Number of GPLs
Original HG18 (Build 36)	NA	1583	40
in situ oligonucleotide	99%	21678	55
BAC/P1	98%	5464	55
spotted DNA/cDNA	91%	2365	82

doi:10.1371/journal.pone.0036944.t003

- Hypersegmented. Serrated distribution of probe signal intensities, causing dozens of separate peaks and discontinuous segments. Chromosomal changes are always up to several hundreds and smaller than 5 mega-bases.
- Noisy. Probe signal intensities are highly scattered, but well-distributed, with high standard deviation, resulting in the inability to differentiate copy number changes.

Depending on the intended research purpose this basic classification system can be used for a pre-analysis triage of copy number data. Applying stringent review criteria we identified a core dataset with “excellent” quality arrays accounting for approximately 60 percent of total arrays. We are currently working on a platform independent quality assessment system for genomic arrays, which will be implemented in future versions of the arrayMap resource.

Associated data. For arrayMap, data is stored with separate datasets for each array. This is in contrast to the Progenetix database, for which technical replicates where available are combined into case specific CNA profiles. In arrayMap, technical replicates are assigned an identical case identifier to facilitate downstream statistical procedures including e.g. clinical data correlations. The assignment of the correct diagnostic entity to each sample is an essential step in generating a binding between genomic and associated data points. At the same time, to ensure annotation consistency and make the retrieval process more efficient, for all CNA profiles the following data points were manually collected from GEO/ArrayExpress and published papers if available.

- Descriptive diagnostic text, as available through the original source
- Diagnostic classification according to the International Classification of Diseases in Oncology (ICDO 3, morphology with code)
- Tumor locus according to ICD (ICD topography with code)
- Source of material (e.g. primary tumor, cell line, metastasis)
- Clinical parameters where available, including age, gender, grade, clinical stage (TNM coded), recurrence/progression, time to recurrence/progression, death and followup

Web Server. An online interface of arrayMap database was created using Perl common gateway interface (CGI) and R scripts running on Mac OS X Server. Sample and series data is stored using a MongoDB database engine (<http://www.mongodb.org>). Precomputed array plots are stored as flat files, mostly in both SVG and PNG versions. The online release of the service has been optimized to be compatible with major browsers supporting current web standards (CSS2, HTML5, XML with inline SVG; e.g. Safari >= 3.0, Firefox >= 3.0, InternetExplorer >= 9, Google Chrome) with limited fallback support. Dynamic graphics provided in the array plot module were implemented as server side services by technologies including XML/XHTML, JavaScript, SVG and HTML5 Canvas.

For the future, we intend a quarterly database content revision to ensure inclusion of newly published articles and GEO/AE entries. Archived versions of the sample annotations will be made available upon special request. Additional feature and small data updates will be performed as seen necessary. The “News” page of Progenetix/arrayMap will be used for feature and content announcements.

Supporting Information

Figure S1 Array data sets visualization. Original plots and optimized parameters for GSE21530 which contains 8 intimal sarcoma samples hybridized on Agilent CGH Microarray 244A platform. The normalized probe signal log₂ ratios and post-thresholding segmentation results for each array are intuitively displayed. Genomic alterations are represented by horizontal green (gain) and red (loss) lines. Alterations defined here as regions with log₂ ratio >0.15 or <-0.15. Simplified schemas of CNAs link to UCSC genome browser for further review. (PDF)

Figure S2 Screenshot of single array visualization. ArrayMap plots for GSM630977 (acute myelogenous leukemia). Besides the whole genome view, subviews of each chromosome are displayed as well. From these plots, different kinds of genetic variation events are clearly revealed, e.g. massive genomic rearrangement in chromosome 6; arm-level gain of chromosome 8q and 3MB focal change around 1p31.3. Through the “Plot Array Data” interface, users can segment the raw data values and re-plot the results with customized parameters. (PDF)

Figure S3 Plot single genomic region. In the “Plot Array Data” interface, input the precise location (chr5:1100000-1400000) in “Plot Region” field. Plots with this region were generated for all 8 arrays in the current series (GSE21530). In this region, there are 5 genes which are shown schematically as colored boxes. CNA status and copy number transition points for these genes are displayed. (PDF)

Figure S4 Compound CNA query. (A) Four gene loci associated with glioblastoma (EGFR, PTEN, ASPM and CDKN2A) were inserted into “Match (Multiple) Regions & Types” field. 303 out of 42421 arrays were returned. (B) Classification information of these 303 arrays were displayed and can be selected for the following analysis. (C) Statistical and plot parameters can be customized. Associated data was processed by online tools, and returned results included: (D) Chromosomal ideogram and (E) histogram, show frequency of copy number aberrations; (F) Matrix plot reveals the aberration pattern of selected arrays; (G) Array classification tree generated by hierarchical Ward clustering, arrays with similar frequency of CNA are part of the tree branch. (H) Heatmap of CNA frequencies clustered by clinical group. (PDF)

Figure S5 Heatmap of frequency profiles for 59 cancer types. Heatmap visualization of frequency profiles for all ICD-O entities containing more than 50 arrays in our core dataset. Region specific gain/loss frequencies were mapped to 1MB intervals. The intensity of colors (green: gains; losses: red) corresponds to the relative frequency of CNAs for each interval. (PDF)

Table S1 Entities extracted from NCBI GEO and EBI ArrayExpress. (XLS)

Table S2 Cancer entities grouped by ICD-O code. (XLS)

Table S3 Platform type distribution in arrayMap. (XLS)

Table S4 Probe remapping rate for platforms. (XLS)

Table S5 Processing method and threshold for calling genomic gains and losses.

(XLS)

Table S6 Normal tissue reference arrays for Affymetrix platforms.

(XLS)

References

1. Stallings RL (2007) Are chromosomal imbalances important in cancer? Trends in genetics : TIG 23: 278–283.
2. Myllykangas S, Himberg J, Böhlting T, Nagy B, Hollmén J, et al. (2006) DNA copy number amplification profiling of human neoplasms. *Oncogene* 25: 7324–7332.
3. Weir BA, Woo MS, Getz G, Perner S, Ding L, et al. (2007) Characterizing the cancer genome in lung adenocarcinoma. *Nature* 450: 893–898.
4. Wiedemeyer R, Brennan C, Heffernan TP, Xiao Y, Mahoney J, et al. (2008) Feedback circuit among INK4 tumor suppressors constrains human glioblastoma development. *Cancer cell* 13: 355–364.
5. Mullighan CG, Goorha S, Radtke I, Miller CB, Coustan-Smith E, et al. (2007) Genome-wide analysis of genetic alterations in acute lymphoblastic leukaemia. *Nature* 446: 758–764.
6. Cancer Genome Atlas Research Network (2008) Comprehensive genomic characterization defines human glioblastoma genes and core pathways. *Nature* 455: 1061–1068.
7. Kan Z, Jaiswal BS, Stinson J, Janakiraman V, Bhatt D, et al. (2010) Diverse somatic mutation patterns and pathway alterations in human cancers. *Nature* 466: 869–873.
8. Bergamaschi A, Kim YH, Wang P, Sorlie T, Hernandez-Boussard T, et al. (2006) Distinct patterns of DNA copy number alteration are associated with different clinicopathological features and geneexpression subtypes of breast cancer. *Genes, chromosomes & cancer* 45: 1033–1040.
9. Hu X, Stern HM, Ge L, O'Brien C, Haydu L, et al. (2009) Genetic alterations and oncogenic pathways associated with breast cancer subtypes. *Molecular cancer research : MCR* 7: 511–522.
10. Kallioniemi A, Kallioniemi OP, Sudar D, Rutovitz D, Gray JW, et al. (1992) Comparative genomic hybridization for molecular cytogenetic analysis of solid tumors. *Science (New York, NY)* 258: 818–821.
11. Pollack JR, Perou CM, Alizadeh AA, Eisen MB, Pergamenschikov A, et al. (1999) Genome-wide analysis of DNA copy-number changes using cDNA microarrays. *Nature genetics* 23: 41–46.
12. Bignell GR, Huang J, Greshock J, Watt S, Butler A, et al. (2004) High-resolution analysis of DNA copy number using oligonucleotide microarrays. *Genome research* 14: 287–295.
13. Baudis M (2007) Genomic imbalances in 5918 malignant epithelial tumors: an explorative metaanalysis of chromosomal CGH data. *BMC cancer* 7: 226.
14. Alloza E, Al-Shahrour F, Cigudosa JC, Dopazo J (2011) A large scale survey reveals that chromosomal copy-number alterations significantly affect gene modules involved in cancer initiation and progression. *BMC medical genomics* 4: 37.
15. Barrett T, Trup DB, Wilhite SE, Ledoux P, Evangelista C, et al. (2011) NCBI GEO: archive for functional genomics data sets—10 years on. *Nucleic acids research* 39: D1005–10.
16. Parkinson H, Sarkans U, Kolesnikov N, Abeygunawardena N, Burdett T, et al. (2010) ArrayExpress update—an archive of microarray and high-throughput sequencing-based functional genomics experiments. *Nucleic acids research* 39: D1002–D1004.
17. Scheinin I, Myllykangas S, Borze I, Böhlting T, Knuutila S, et al. (2008) CanGEM: mining gene copy number changes in cancer. *Nucleic acids research* 36: D830–5.
18. Cao Q, Zhou M, Wang X, Meyer CA, Zhang Y, et al. (2011) CaSNP: a database for interrogating copy number alterations of cancer genome from SNP array data. *Nucleic acids research* 39: D968–74.
19. Baudis M, Cleary ML (2001) Progenetix.net: an online repository for molecular cytogenetic aberration data. *Bioinformatics (Oxford, England)* 17: 1228–1229.
20. Baumbusch LO, Aaroe J, Johansen FE, Hicks J, Sun H, et al. (2008) Comparison of the Agilent, ROMA/NimbleGen and Illumina platforms for classification of copy number alterations in human breast tumors. *BMC genomics* 9: 379.
21. Curtis C, Lynch AG, Dunning MJ, Spiteri I, Marioni JC, et al. (2009) The pitfalls of platform comparison: DNA copy number array technologies assessed. *BMC genomics* 10: 588.
22. Greshock J, Feng B, Nogueira C, Ivanova E, Perna I, et al. (2007) A comparison of DNA copy number profiling platforms. *Cancer research* 67: 10173–10180.
23. Bengtsson H, Ray A, Spellman P, Speed TP (2009) A single-sample method for normalizing and combining full-resolution copy numbers from multiple platforms, labs and analysis methods. *Bioinformatics (Oxford, England)* 25: 861–867.
24. Heinrichs S, Look T (2007) Identification of structural aberrations in cancer by SNP array analysis. *Genome biology*. pp 1–5.
25. Carter NP (2007) Methods and strategies for analyzing copy number variation using DNA microarrays. *Nature genetics* 39: S16–S21.
26. Lubin M, Lubin A (2009) Selective killing of tumors deficient in methylthioadenosine phosphorylase: a novel strategy. *PLoS one* 4: e5735.
27. Krasinskas AM, Bartlett DL, Cieply K, Dacic S (2010) CDKN2A and MTAP deletions in peritoneal mesotheliomas are correlated with loss of p16 protein expression and poor survival. *Modern pathology : an official journal of the United States and Canadian Academy of Pathology, Inc* 23: 531–538.
28. Smith JS, Tachibana I, Passe SM, Huntley BK, Borell TJ, et al. (2001) PTEN mutation, EGFR amplification, and outcome in patients with anaplastic astrocytoma and glioblastoma multiforme. *Journal of the National Cancer Institute* 93: 1246–1256.
29. Li J (1997) PTEN, a Putative Protein Tyrosine Phosphatase Gene Mutated in Human Brain, Breast, and Prostate Cancer. *Science (New York, NY)* 275: 1943–1947.
30. Horvath S, Zhang B, Carlson M, Lu KV, Zhu S, et al. (2006) Analysis of oncogenic signaling networks in glioblastoma identifies ASPM as a molecular target. *Proceedings of the National Academy of Sciences of the United States of America* 103: 17402–17407.
31. Zhang W, Zhu J, Bai J, Jiang H, Liu F, et al. (2010) Comparison of the inhibitory effects of three transcriptional variants of CDKN2A in human lung cancer cell line A549. *Journal of experimental & clinical cancer research : CR* 29: 74.
32. van der Rhee JI, Krijnen P, Gruijs NA, de Snoo FA, Vasen HFA, et al. (2011) Clinical and histologic characteristics of malignant melanoma in families with a germline mutation in CDKN2A. *Journal of the American Academy of Dermatology*.
33. Bourdeaut F, Isidor B, Ferrand S, Thomas C, Moreau A, et al. (2011) Homozygous PTEN deletion in neuroblastoma arising in a child with Cowden syndrome. *American journal of medical genetics Part A* 155: 1763–1766.
34. Jin K, Kong X, Shah T, Penet MF, Wildes F, et al. (2011) Breast Cancer Special Feature: The HOXB7 protein renders breast cancer cells resistant to tamoxifen through activation of the EGFR pathway. *Proceedings of the National Academy of Sciences of the United States of America*.
35. Wiltshire RN, Rasheed BK, Friedman HS, Friedman AH, Bigner SH (2000) Comparative genetic patterns of glioblastoma multiforme: potential diagnostic tool for tumor classification. *Neurooncology* 2: 164–173.
36. Fujita PA, Rhead B, Zweig AS, Hinrichs AS, Karolchik D, et al. (2011) The UCSC Genome Browser database: update 2011. *Nucleic acids research* 39: D876–82.
37. Forbes SA, Bindal N, Bamford S, Cole C, Kok CY, et al. (2011) COSMIC: mining complete cancer genomes in the Catalogue of Somatic Mutations in Cancer. *Nucleic acids research* 39: D945–50.
38. Gearhart J, Pashos EE, Prasad MK (2007) Pluripotency redux—advances in stem-cell research. *The New England journal of medicine* 357: 1469–1472.
39. Dalla-Favera R, Bregni M, Erikson J, Patterson D, Gallo RC, et al. (1982) Human c-myc onc gene is located on the region of chromosome 8 that is translocated in Burkitt lymphoma cells. *Proceedings of the National Academy of Sciences of the United States of America* Vol. 79: 7824–7827.
40. Climent J, Dimitrov P, Fridlyand J, Palacios J, Siebert R, et al. (2007) Deletion of chromosome 11q predicts response to anthracycline-based chemotherapy in early breast cancer. *Cancer research* 67: 818–826.
41. Chin K, DeVries S, Fridlyand J, Spellman PT, Roydasgupta R, et al. (2006) Genomic and transcriptional aberrations linked to breast cancer pathophysiology. *Cancer cell* 10: 529–541.
42. Stevens KN, Fredericksen Z, Vachon CM, Wang X, Margolin S, et al. (2012) 19p13.1 is a triple negative-specific breast cancer susceptibility locus. *Cancer research*.
43. Park NI, Rogan PK, Tarnowski HE, Knoll JHM (2012) Structural and genic characterization of stable genomic regions in breast cancer: Relevance to chemotherapy. *Molecular oncology*.
44. Firth HV, Richards SM, Bevan AP, Clayton S, Corpas M, et al. (2009) DECIPHER: Database of Chromosomal Imbalance and Phenotype in Humans Using Ensembl Resources. *The American Journal of Human Genetics* 84: 524–533.

Acknowledgments

We want to thank Christian von Mering, Homayoun Bagheri, Henrik Bengtsson and Nuria Lopez-Bigas for helpful discussions.

Author Contributions

Conceived and designed the experiments: HC NK MB. Performed the experiments: HC MB. Analyzed the data: HC NK MB. Contributed reagents/materials/analysis tools: HC NK MB. Wrote the paper: HC MB.

45. Bengtsson H, Simpson K, Bullard J, Hansen K (2008) aroma.affymetrix: A genetic framework in R for analyzing small to very large Affymetrix data sets in bounded memory. Tech Report #745 Department of Statistics, University of California, Berkeley.
46. Bengtsson H, Wirapati P, Speed TP (2009) A single-array preprocessing method for estimating full-resolution raw copy numbers from all Affymetrix genotyping arrays including GenomeWideSNP 5 & 6. *Bioinformatics* (Oxford, England) 25: 2149–2156.
47. Laurie CC, Doheny KF, Mirel DB, Pugh EW, Bierut LJ, et al. (2010) Quality control and quality assurance in genotypic data for genome-wide association studies. *Genetic Epidemiology* 34: 591–602.
48. F C, AL A, SA K, TP S, VL SM (2005) NUSE and RLE: Quality assessment of oligonucleotide microarray data to quantify systemic variation. 2005 Meeting of the Federation of Clinical Immunology Societies Boston, MA.