

CORRESPONDENCE

Open Access

RBFOX2 and alternative splicing in B-cell lymphoma

Hilmar Quentmeier¹, Claudia Pommerenke¹, Stephan H. Bernhart², Wilhelm G. Dirks¹, Vivien Hauer¹, Steve Hoffmann³, Stefan Nagel¹, Reiner Siebert⁴, Cord C. Uphoff¹, Margarete Zaborski¹ and Hans G. Drexler¹, ICGC MMML-Seq Consortium

RBFOX2 is a master regulator of alternative splicing¹. This RNA-binding protein (RBP) is expressed in the brain², muscle³, and embryonic stem cells⁴. *RBFOX2* is required not only for the proper splicing of target RNAs, but also for cerebellar development², myogenesis³, and for survival of human embryonic stem cells⁴.

Hitherto, not much is known about the expression and function of *RBFOX2* in hematopoietic tissues. In an early report, *RBFOX2* had been shown to be capable of promoting inclusion of exon16 in protein 4.1R⁵. This splicing event is important for erythropoiesis because it increases the affinity of 4.1R for target genes⁵. In a recent study, expression of *RBFOX2* was detected in the human T-cell line JURKAT and a functional antagonism of the RBPs *RBFOX2* and *CELF2* was demonstrated⁶. We wanted to describe the expression patterns of *RBFOX2* in hematopoietic malignancies, to discover target genes and to unravel the consequence of *RBFOX2* repression for target gene splicing and isoform expression.

Expression array and Western blot analysis showed that human B non-Hodgkin lymphoma (B-NHL) cell lines are *RBFOX2* negative or positive (Supplement 1A). To find the potential targets of the splice factor *RBFOX2*, we compared the expression of individual exons in *RBFOX2*-negative and *RBFOX2*-positive cell lines. This approach relied on the assumption that the differential expression of this RBP would provoke changes in the expression of individual exons and would thereby allow identification of target genes. Supplement 1B shortlists these genes

ordered by statistical significance. Expression of the individual exons and joining sequences of *MALT1* is shown as heatmap in Fig. 1a. The full-length *MALT1* variant was associated with *RBFOX2* expression (Fig. 1a).

Results of splice variant analysis with a larger panel of cell lines revealed a striking association between expression of *RBFOX2* and expression of the full-length forms of all four candidate target genes, *MALT1*, *CLSTN1*, *FMNL3*, and *MYO9B* (Fig. 1b). The short variants were expressed in *RBFOX2*-negative cell lines only (Fig. 1b). Two of these potential *RBFOX2* target genes (*CLSTN1* and *FMNL3*) had already been described in the context of *RBFOX2*-mediated splicing⁷. The *RBFOX2* target sequence “UGCAUG” was present in all introns following the retained exons, indicating that high *RBFOX2* levels might be the cause of the full-length forms in the *RBFOX2* positive cell lines. Supporting the notion that *RBFOX2* was important for splicing of these genes was also the finding that *RBFOX2* was the sole gene that was significantly overexpressed in cell lines expressing full-length *MALT1* when compared to cell lines expressing *MALT1* without exon 7 (Supplement 1C).

We performed knockdown experiments to test whether *RBFOX2* was responsible for retaining *MALT1* exon 7, *FMNL3* exon 26, and *MYO9B* exon 37. siRNAs reduced expression of *RBFOX2* in *RBFOX2*-positive cell lines BL-2, SU-DHL-5, and HT by more than 50% (Fig. 1c, Supplement 1D). Repression of *RBFOX2* induced the shorter isoforms of *MALT1* (w/o exon 7), *MYO9B* (w/o exon 37), and *FMNL3* (w/o exon 26) (Fig. 1c, Supplement 1D). The long form of *CLSTN1*, the fourth gene tested here, was not or only marginally expressed in BL-2, SU-DHL-5, and HT cells, explaining why we could not observe an increase of the short isoform of this gene after *RBFOX2* knockdown (data not shown). In sum, our data showed that

Correspondence: Hilmar Quentmeier (hqu@dsmz.de)

¹Department of Human and Animal Cell Lines, Leibniz-Institute DSMZ-German Collection of Microorganisms and Cell Cultures, Braunschweig, Germany

²Transcriptome Bioinformatics Group - Interdisciplinary Centre for Bioinformatics, Leipzig University, Leipzig, Germany

Full list of author information is available at the end of the article.

© The Author(s) 2018



Open Access This article is licensed under a Creative Commons Attribution 4.0 International License, which permits use, sharing, adaptation, distribution and reproduction in any medium or format, as long as you give appropriate credit to the original author(s) and the source, provide a link to the Creative Commons license, and indicate if changes were made. The images or other third party material in this article are included in the article's Creative Commons license, unless indicated otherwise in a credit line to the material. If material is not included in the article's Creative Commons license and your intended use is not permitted by statutory regulation or exceeds the permitted use, you will need to obtain permission directly from the copyright holder. To view a copy of this license, visit <http://creativecommons.org/licenses/by/4.0/>.

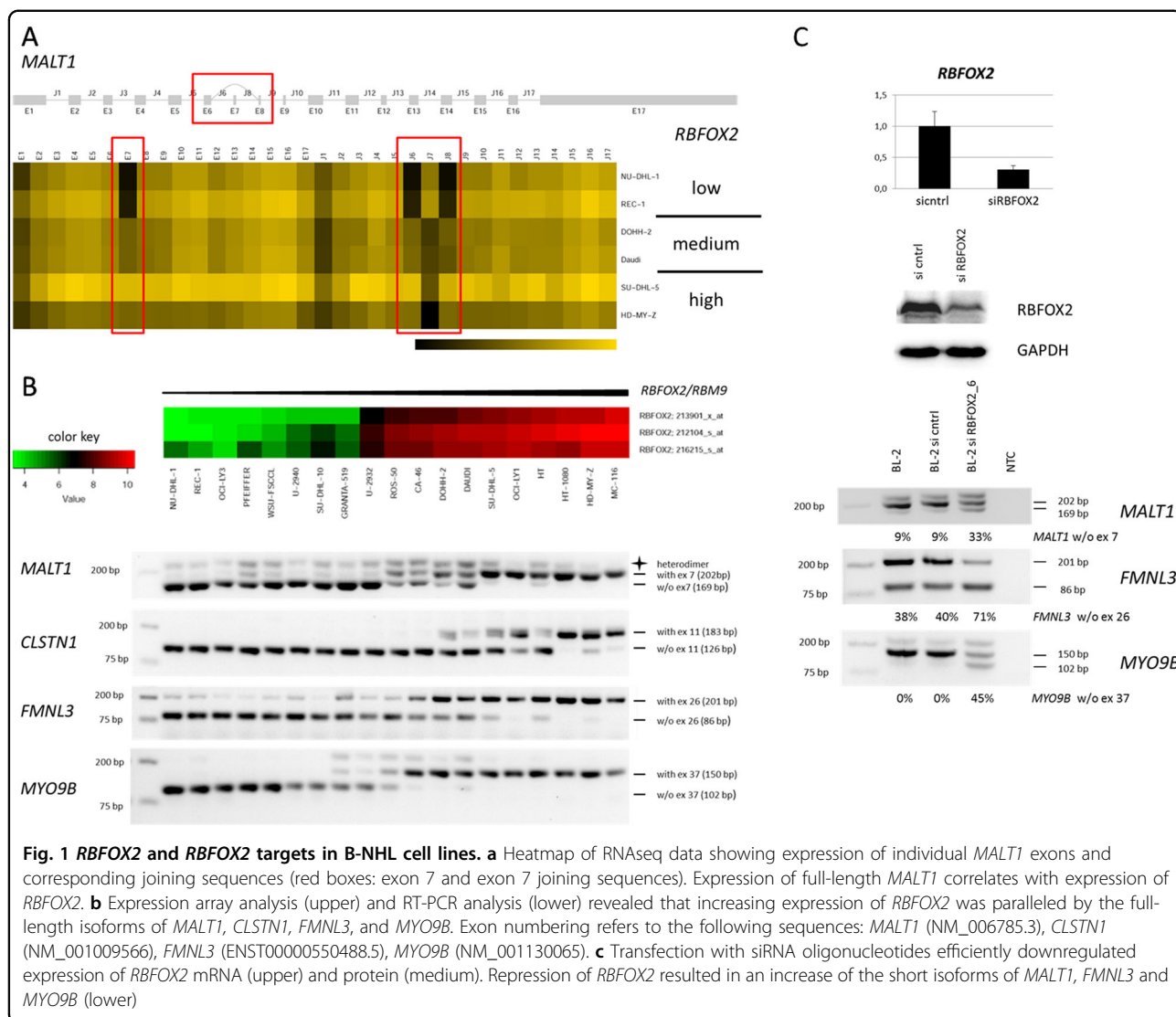


Fig. 1 *RBFOX2* and *RBFOX2* targets in B-NHL cell lines. **a** Heatmap of RNAseq data showing expression of individual *MALT1* exons and corresponding joining sequences (red boxes: exon 7 and exon 7 joining sequences). Expression of full-length *MALT1* correlates with expression of *RBFOX2*. **b** Expression array analysis (upper) and RT-PCR analysis (lower) revealed that increasing expression of *RBFOX2* was paralleled by the full-length isoforms of *MALT1*, *CLSTN1*, *FMNL3*, and *MYO9B*. Exon numbering refers to the following sequences: *MALT1* (NM_006785.3), *CLSTN1* (NM_001009566), *FMNL3* (ENST00000550488.5), *MYO9B* (NM_001130065). **c** Transfection with siRNA oligonucleotides efficiently downregulated expression of *RBFOX2* mRNA (upper) and protein (medium). Repression of *RBFOX2* resulted in an increase of the short isoforms of *MALT1*, *FMNL3* and *MYO9B* (lower)

isoforms of *MALT1*, *MYO9B*, and *FMNL3* in B-NHL cell lines are controlled by *RBFOX2*: the full-length RNAs were expressed when *RBFOX2* was high, the short variants prevailed when *RBFOX2* was repressed.

RBFOX2 is part of a mesenchymal splicing network⁷. The gene is also essential for the viability of human embryonic stem cells and for normal cerebellar development of mice^{2,4}. Thus, *RBFOX2* appears to have different functions in cells of different origin. To check whether *RBFOX2* induced splicing of *MALT1*, *CLSTN1*, *FMNL3*, and *MYO9B* in hematopoietic cells other than B-cells, we tested *RBFOX2* expression and expression of the splice variants of the putative *RBFOX2* targets in T- and myeloid cell lines.

Neither T-cell lines nor myeloid cell lines reached the *RBFOX2* mRNA expression level of the B-cell line HT. Nevertheless, the T- and myeloid cell lines with highest *RBFOX2* mRNA levels also expressed the protein

(Supplement 1A). T-cell lines with high *RBFOX2* levels expressed the large isoform of *MALT1*. However, an apparent universal dependence of *RBFOX2* and the large isoforms of *MALT1*, *CLSTN1*, *FMNL3*, and *MYO9B* comparable to that in B-cell lines was neither found in T- nor in myeloid cell lines. This does not necessarily mean that *RBFOX2* is functionless in cells of the T-lymphoid and myeloid lineages. *RBFOX2* is expressed in cell lines of both entities, and the full-length *MALT1* isoform is expressed in *RBFOX2*-positive T-cells. The other three genes (*CLSTN1*, *FMNL3*, and *MYO9B*) appear to be targets of *RBFOX2* in the B-lineage only. These results suggest that tissue-specific factors might contribute to the splicing process mediated by *RBFOX2*.

We limited our further studies to B-NHL, because we had identified the *RBFOX2* target genes in B-NHL cell lines. As shown in cell lines, also primary tumor cells of patients with diffuse large B-cell lymphoma (DLBCL)

Table 1 Correlation between expression of *RBFOX2* and inclusion of exons in *RBFOX2* target genes

	<i>MALT1</i> exon 7		<i>CLSTN1</i> exon 11		<i>FMNL3</i> exon 26		<i>MYO9B</i> exon 37	
	Correlation	p-value	Correlation	p-value	Correlation	p-value	Correlation	p-value
DLBCL ABC (n = 26)	0.496	0.009	0.450	0.023	0.139	0.496	0.338	0.09
DLBCL GCB (n = 37)	0.591	0.0001	0.147	0.383	0.558	0.0004	0.561	0.0003
DLBCL type III (n = 15)	0.125	0.675	0.385	0.156	1	0	0.307	0.265
All DLBCL (n = 78)	0.522	1.2 x 10⁻⁶	0.303	0.007	0.300	0.008	0.566	1.1 x 10⁻⁷
BL (solid ped BL) (n = 21)	0.703	0.0005	0.669	0.001	0.484	0.027	0.672	0.001
FL (n = 87)	0.321	0.003	0.437	2.3 x 10⁻⁵	0.227	0.034	0.397	0.0001
FL-DLBCL (n = 15)	0.464	0.083	0.029	0.923	0.503	0.058	0.435	0.106
GC B cells, control (n = 5)	-0.9	0.083	0.2	0.783	0.3	0.683	-0.2	0.783
Naive B cells, control (n = 5)	0.6	0.083	-0.354	0.783	-0.8	0.683	-0.2	0.783

RNASeq data from lymphoma and control, mapped to hg38 with segemehl 2.0; data were normalized against target gene expression. Bold: statistically significant. Normalization: transformation to target gene expression levels

show differential *RBFOX2* gene expression (Fig. 1b upper, Supplement 1E). We analyzed RNAseq data from patients with different forms of B-NHL (ICGC MMML-Seq consortium) to find out whether primary tumor cells exhibited the same correlation between *RBFOX2* expression and the *RBFOX2* target gene isoforms as detected in B-NHL cell lines. We checked samples from patients with DLBCL (n = 78), Burkitt lymphoma (BL) (n = 21), follicular lymphoma (FL) (n = 87), and FL-DLBCL (n = 15). Germinal center (GC) B-cells (n = 5) and naive B-cells (n = 5) were included as controls.

RBFOX2 expression and *MALT1* exon 7 inclusion were positively correlated in BL, FL, activated B-cell (ABC), and GC DLBCL (p < 0.05) (Table 1). In contrast, no such correlation was found for healthy controls, DLBCL (type III) and FL-DLBCL (Table 1). Supporting the notion that *RBFOX2* regulates splicing in all four proposed *RBFOX2* target genes (*MALT1* exon 7, *CLSTN1* exon 11, *FMNL3* exon 26, and *MYO9B* exon 37), we found a statistically significant positive correlation between expression of *RBFOX2* and inclusion of target exons in FL, BL, and in at least one subtype of DLBCL (Table 1). The data had been normalized against target gene expression levels to avoid a potential bias through target gene expression levels.

RBFOX2 is a member of the *RBFOX* family of RBP, also including *RBFOX1* and *RBFOX3*. All three proteins recognize the same sequence (UGCAUG) in regulated exons or in flanking introns⁸. To analyze whether *RBFOX1* and *RBFOX3* might also contribute to the splicing of our four target genes, we tested for correlation between expression of these *RBFOX* family members and inclusion of exons in target genes. We did not find a statistically significant correlation between *RBFOX1* or *RBFOX3* expression and inclusion of exons in *CLSTN1* and *FMNL3* (Supplement 1F). *MALT1* and *MYO9B*

showed this correlation only in selected tumor variants, but not in BL, ABC DLBCL, or GC DLBCL, when the latter two were analyzed as individual lymphoma entities (Supplement 1F). Thus, *RBFOX2* was the only *RBFOX* family member whose expression was positively correlated with the full-length isoforms of the target genes (*MALT1*, *CLSTN1*, *FMNL3*, and *MYO9B*) in BL, FL, and DLBCL.

These data suggest that *RBFOX2* is a regulator of splicing in B-NHL. This notion is based on (i) the positive correlation between *RBFOX2* expression and expression of the full-length variants of the putative *RBFOX2* target genes in B-NHL cell lines and in primary B-NHL samples, and (ii) results of knockdown experiments demonstrating that *RBFOX2* is responsible for inclusion of exons in *MALT1* and other target genes.

MALT1 appears to be of special interest as it encodes a protease that activates the IKK complex⁹. In lymphocytes, *MALT1* cleaves RelB, which also leads to the activation of NFkB¹⁰. Both *MALT1* isoforms (with and w/o exon 7) are expressed in T-lymphocytes and expression of the individual variants has consequences for T-cell receptor triggered signal transduction¹¹. As part of the *CARMA1-BCL10-MALT1* complex, *MALT1* is also a central regulator of the B-cell receptor (BCR) / NFkB pathway. ABC-type DLBCL cells rely on the constitutive activation of this pathway to block apoptosis¹². Recurrent mutations in *CD79A/B*, *CARD11*, and other BCR/NFkB pathway genes have been described¹³. Like *Bruton's Tyrosine Kinase*, upstream to *MALT1* in the BCR/NFkB pathway, also *MALT1* is a potential target for precision therapy¹⁴. Future studies shall elucidate whether the two *MALT1* isoforms display different capacities to activate NFkB in B-NHL, which might be of importance for the clinical application of *MALT1* inhibitors.

In summary, (i) *RBFOX2* is expressed in hematopoietic cell lines of different origin; (ii) expression of *RBFOX2* correlates with isoforms of potential target genes in B-NHL cell lines and in primary B-NHL cells; and (iii) knockdown experiments suggest that *RBFOX2*—directly or indirectly—contributes to the splicing of target genes including *MALT1*, a protease in the BCR/NFκB pathway.

Acknowledgements

The authors gratefully acknowledge the Gauss Centre for Supercomputing e.V. (www.gauss-centre.eu) for funding this project by providing computing time on the GCS Supercomputer SuperMUC at Leibniz Supercomputing Centre (www.lrz.de). This study has been supported by the German Ministry of Science and Education (BMBF) in the framework of the ICGC MMML-Seq project (01KU1002A-J), the project ICGC DE-MINING (01KU1505G), and the KinderKrebsInitiative Buchholz/Holm-Seppensen.

Author details

¹Department of Human and Animal Cell Lines, Leibniz-Institute DSMZ-German Collection of Microorganisms and Cell Cultures, Braunschweig, Germany.

²Transcriptome Bioinformatics Group - Interdisciplinary Centre for Bioinformatics, Leipzig University, Leipzig, Germany. ³Computational Biology, Leibniz Institute on Aging – Fritz Lipmann Institute and Friedrich Schiller University Jena, Jena, Germany. ⁴Institute of Human Genetics, Ulm University and Ulm University Medical Center, Ulm, Germany

Author contributions

H.Q. Study conception and design, manuscript writing. C.P.: Analysis of RNAseq data, expression array analysis, statistical analysis. S.H.B.: Analysis of RNAseq data, statistical analysis. W.G.D.: Knockdown experiments. V.H.: Acquisition of data. S.H.: RNAseq data analysis. S.N.: Knockdown experiments. R.S.: Coordination of the ICGC-MMML-Seq and the primary lymphoma data generation and provision, interpretation of data. C.C.U.: Analysis and presentation of data. M.Z.: Acquisition of data. H.G.D.: Provision of cell lines and study conception. All authors read and approved the final manuscript.

Conflict of interest

The authors declare that they have no conflict of interest.

Publisher's note

Springer Nature remains neutral with regard to jurisdictional claims in published maps and institutional affiliations.

Supplementary Information accompanies this paper at (<https://doi.org/10.1038/s41408-018-0114-3>).

Received: 27 February 2018 Revised: 20 June 2018 Accepted: 6 July 2018
Published online: 10 August 2018

References

1. Arya, A. D., Wilson, D. I., Baralle, D. & Raponi, M. RBFOX2 protein domains and cellular activities. *Biochem. Soc. Trans.* **42**, 1180–1183 (2014).
2. Gehman, L. T. et al. The splicing regulator Rbfox2 is required for both cerebellar development and mature motor function. *Genes Dev.* **26**, 445–460 (2012).
3. Singh, R. K. et al. Rbfox2-coordinated alternative splicing of Mef2d and Rock2 controls myoblast fusion during myogenesis. *Mol. Cell* **55**, 592–603 (2014).
4. Yeo, G. W. et al. An RNA code for the FOX2 splicing regulator revealed by mapping RNA-protein interactions in stem cells. *Nat. Struct. Mol. Biol.* **16**, 130–137 (2009).
5. Ponthier, J. L. et al. Fox-2 splicing factor binds to a conserved intron motif to promote inclusion of protein 4.1R alternative exon 16. *J. Biol. Chem.* **281**, 12468–12474 (2006).
6. Gazzara, M. R. et al. Ancient antagonism between CELF and RBFOX families tunes mRNA splicing outcomes. *Genome Res.* **27**, 1360–1370 (2017).
7. Venables, J. P. et al. MBNL1 and RBFOX2 cooperate to establish a splicing programme involved in pluripotent stem cell differentiation. *Nat. Commun.* **4**, 2480 (2013).
8. Kuroyanagi, H. Fox-1 family of RNA-binding proteins. *Cell. Mol. Life Sci.* **66**, 3895–3907 (2009).
9. McAllister-Lucas, L. M. & Lucas, P. C. Finally, MALT1 is a protease. *Nat. Immunol.* **9**, 231–233 (2008).
10. Haiflinger, S. et al. MALT1-dependent RelB cleavage promotes canonical NF-κB activation in lymphocytes and lymphoma cell lines. *Proc. Natl. Acad. Sci. USA* **108**, 14596–14601 (2011).
11. Meiningner, I. et al. Alternative splicing of MALT1 controls signalling and activation of CD4+T cells. *Nat. Commun.* **7**, 11292 (2016).
12. Davis, R. E., Brown, K. D., Siebenlist, U. & Staudt, L. M. Constitutive nuclear factor κB activity is required for survival of activated B cell-like diffuse large B cell lymphoma cells. *J. Exp. Med.* **194**, 1861–1874 (2001).
13. Pasqualucci, L. & Dalla-Favera, R. SnapShot: Diffuse large B cell lymphoma. *Cancer Cell.* **25**, 132–132e1 (2014).
14. Nagel, D. et al. Pharmacologic inhibition of MALT1 protease by phenothiazines as a therapeutic approach for the treatment of aggressive ABC-DLBCL. *Cancer Cell.* **22**, 825–837 (2012).