

Designing a Strategy for pH Control to Improve CHO Cell Productivity in Bioreactor

Zohreh Ahleboot, Mahdi Khorshidtalab, Paria Motahari, Rasoul Mahboudi, Razieh Arjmand, Aram Mokarizadeh, and Shayan Maleknia *

Biopharmaceutical Research Center, Aryogen Pharmed Inc., Alborz University of Medical Sciences, Karaj, Iran

Abstract

Background: Drastic pH drop is a common consequence of scaling up a mammalian cell culture process, where it may affect the final performance of cell culture. Although CO₂ sparging and base addition are used as common approaches for pH control, these strategies are not necessarily successful in large scale bioreactors due to their effect on osmolality and cell viability. Accordingly, a series of experiments were conducted using an IgG1 producing Chinese Hamster Ovary (CHO-5) cell culture in 30 L bioreactor to assess the efficiency of an alternative strategy in controlling culture pH.

Methods: Factors inducing partial pressure of CO₂ and lactate accumulation (as the main factors altering culture pH) were assessed by Plackett-Burman design to identify the significant ones. As culture pH directly influences process productivity, protein titer was measured as the response variable. Subsequently, Central Composite Design (CCD) was employed to obtain a model for product titer prediction as a function of individual and interaction effects of significant variables.

Results: The results indicated that the major factor affecting pH is non-efficient CO₂ removal. CO₂ accumulation was found to be affected by an interaction between agitation speed and overlay air flow rate. Accordingly, after increasing the agitation speed and headspace aeration, the culture pH was successfully maintained in the range of 6.95-7.1, resulting in 51% increase in final product titer. Similar results were obtained during 250 L scale bioreactor culture, indicating the scalability of the approach.

Conclusion: The obtained results showed that pH fluctuations could be effectively controlled by optimizing CO₂ stripping.

Avicenna J Med Biotech 2021; 13(3): 123-130

Keywords: Carbon dioxide, Cell survival, Hydrogen-ion concentration (pH), Immunoglobulin G, Lactic acid

Introduction

Monoclonal antibodies (mAbs) have become the major biopharmaceutical products over the recent decade¹. By taking advantage of their identical or similar post translational modifications to human, mammalian cells are considered as the main expression system for mAb production². In this regard, Chinese Hamster Ovary (CHO) cells are the most commonly used host system for expression of recombinant mAb³. However, considering that CHO cell growth and protein production are highly influenced by the metabolic pathways, culture process parameters play a critical role in cell performance through the induction of certain metabolism pathways⁴. Therefore, understanding the linkage between cell metabolism and process parameters is of particular importance for process optimization and scale up⁵. pH, as one of the most critical process parameters in mammalian cell culture, has enough poten-

tial to modify cellular growth and specific productivity rate⁶. Therefore, in almost all laboratory and large scale bioreactors, pH control system is automated to maintain pH at desired range by addition of acid or alkaline⁷. However, controlling pH with acid or alkaline addition is often a challenge for pilot and large scale bioreactors since increase of bioreactor size can exacerbate the effect of high local pH excursions by increasing mixing time⁸.

pH changes in the mammalian culture is mainly caused by lactate or carbon dioxide accumulation⁹. Lactate is produced as a final product of incomplete glucose fermentation and accumulates during the later stages of the fed-batch culture which results in pH reduction¹⁰. It has been shown that glucose and dissolved oxygen concentrations affect the lactate profile of mammalian cell culture process¹¹. Additionally, low

* Corresponding author:
Shayan Maleknia, MSc.,
Biopharmaceutical Research
Center, Aryogen Pharmed Inc.,
Alborz University of Medical
Science, Karaj, Iran
Tel: +98 26 336106480
Fax: +98 26 36104644
E-mail:
Maleknias@aryogen.com
Received: 27 Sept 2020
Accepted: 26 Dec 2020

CO₂ removal rates can cause significant changes in pH¹². Agitation speed, sparge rate, bubble size, impeller position, and headspace aeration are considered as factors affecting pCO₂¹³. However, improving CO₂ removal through increasing agitation speed is almost avoided mainly due to detrimental consequences of agitation induced shear stress¹⁴. Moreover, due to the decreased surface area per volume in large scale bioreactors which result in a reduced aeration rate, sparging rate and bubble size are barely changed during scale up¹⁵.

Previous studies indicated that the factors contribute to lactate production and CO₂ accumulation should be considered during process scale up¹⁶. Subsequently, development of a culture method with minimized lactate and CO₂ accumulation not only improves manufacturing process but also increases process robustness¹⁷. Different strategies can be used for optimizing process operating conditions to achieve optimum system performance. Design of Experiments (DOE) is a set of statistical approaches which is applied for modeling the bioprocess and offers several advantages over many traditional experimental designs¹⁸. Accordingly, the obtained model can be used for optimization and prediction of the response under operational conditions¹⁹.

The current research has focused on investigating the impact of critical parameters on cell culture pH and productivity by means of Plackett-Burman Design (PBD). Then, a Central Composite Design (CCD) was applied to study the interaction effects of overlay flow rate and agitation speed on the response variable. Additionally, the optimized levels were verified during scale up experiments. To the best of our knowledge, this is the first report of applying design of experiment as a statistical approach to control culture pH. This strategy takes advantage of studying the interaction and main effects of parameters.

Materials and Methods

Cell line and culture media

A CHO-S (Thermo Fisher Scientific, USA, Catalog no: A11364) cell line expressing a 149 *kDa* anti-VEGF monoclonal antibody was obtained from Research Working Cell Bank (RWCB) of AryoGen Pharmed (Alborz, Iran). Cells were cultured in a chemically defined medium (GE Healthcare, Sweden) supplemented with 6 *mM* L-glutamine (Lonza, Belgium). Seed culture was prepared in a 500-*ml* baffled shake flask with an effective volume of 100 *ml*, incubated at 37°C with 5% CO₂ and agitation speed of 75 RPM (Revolution Per Minute) (Infors LTD., UK) with 25 *mm* orbital diameter. The temperature was down-shifted to 32°C on day 5 of culture.

Cell culture analysis

Bioreactor samples were daily obtained and analyzed immediately. Viable cell density and viability were determined using 0.4% trypan blue exclusion-based method (Sigma, Canada). Osmolality was meas-

ured by Osmomat 3000 cryoscopic osmometer (Genotec, Germany). pCO₂ was determined using Bioprofile 400 Analyzer (Nova Biomedical, USA). Glucose and lactate levels were assessed using a Biosen C-line lactate and glucose analyzer (EKF Diagnostics, Germany). Specific lactate production (qLac) was calculated according to equation 1²⁰. The expression level of target protein was measured at certain time points using an in-house enzyme linked immunosorbent assay (ELISA). Final concentration of product at the end of the fed-batch culture was determined by MAbPac Protein A affinity column (Thermo scientific, USA).

$$\text{Equation 1: } q_{\text{lactate}} = \frac{\Delta \text{lactate} \times 90}{\Delta \text{IVCC} \times \Delta t}$$

Δt is a time difference since the previous time point and IVCC (cell/ (*ml** *day*)) is the integral cell density and is calculated by

$$\text{Equation 2: } \text{IVCD}_n = \frac{\text{VCD}(t_n) + \text{VCD}(t_{n-1}) \times (\Delta t)}{2} + \text{IVCD}(t - 1)$$

where t_n and t_{n-1} (Δt) are the time at final and initial time points, respectively, and VCD (t_n) and VCD (t_{n-1}) are the cell density at final and initial time points, respectively.

Bioreactor operation

In this study, 30 *L* and 250 *L* stirred tank reactors (STR) (Biozeen, India) with three standard segment impellers and a frit sparger in 30 *L* bioreactor and a dual frit sparger system in 250 *L* were used. Bioreactor agitation speed was used to maintain the same power input per volume (P/V: 0.05) level between two scales, 145 RPM for 30 *L* bioreactor and 100 RPM for 250 *L* bioreactor. O₂ flow was kept at 0.1 *LPM* (Liters Per Minute) and 3 *LPM* in 30 *L* and 250 *L* bioreactors, respectively. Overlay flow rate was examined between 5-15 *LPM* based on the experimental design. Vessel height to vessel diameter (H/D) ratio was taken as 1.5:1, while the impeller to vessel diameter (Di/Dt) was 0.34 in both bioreactors.

Bioreactor fed-batch culture

Bioreactors were inoculated to an initial working volume of 26 *L* and 178 *L*, respectively, at a target cell density of 0.65×10⁶ *cells/ml*. Cultures were fed daily starting on day 2 by corresponding medium feed (2% feed A and 0.2% feed B). Glucose concentration was increased using 400 *g/l* glucose stock solution, once the value was below 1 *g/l*. Dissolved Oxygen (DO) was controlled at 60% of air saturation using pure oxygen sparging. A pH set point of 7.0 was adjusted with a dead-band of 0.1. Sodium bicarbonate buffer (0.5 *M*) was used to control pH at the set point according to Plackett-Burman experimental design.

Plackett-Burman experimental design

Plackett-Burman design was employed to investigate the potential influences of five operating parameters including glucose set-point, dissolved oxygen con-

centration set-point, gas flow rate (overlay), sodium bicarbonate buffer addition (to control pH) and agitation speed on the target mAb production (Buffer addition was selected as a categorical variable). In total, 18 saturated experiments (with three replicates at the center point) were designed using Minitab 18 (Minitab Inc., USA) to screen variables at two levels (Table 1). Values of operational parameters were chosen based on data obtained from preliminary experiments (DO set point, glucose set point, overlay flow rate, and agitation speed were adjusted between 40-60%, 1-3 g/l, 5-15 LPM, and 115-145 RPM). All experiments were carried out (duplicate) in 30 L STR bioreactors under conditions determined by the experimental design. The response variables were subjected to a regression analysis to find out the most important factors affecting productivity of the culture.

Statistical optimization of selected variables using central composite design

The two selected factors were subjected to RSM to evaluate their accurate relationship and to identify their optimal levels. Central composite design was applied to test 13 different process conditions in 30 L STR bioreactors. The ranges of values for the selected factors are shown in table 2. The center point was replicated three times to estimate the experimental error²¹. The response data were analyzed to generate a quadratic (second order) polynomial model. The goodness of fit test was further measured through calculating correlation coefficient between the experimental and predicted values of the response variable.

Model validation

Cultures run in triplicate with the optimal values of the selected factors were used to verify the statistical model. The confirmatory experiments were then performed in large-scale bioreactor (three independent runs in 250 L STR bioreactor) and analyzed by Tukey's multiple comparison test. Constant impeller power per volume ($P/V=0.05$) was used as the scale up criterion. The rest of process parameters were kept un-altered, similar to values set for 30 L bioreactor.

Results and Discussion

Screening of significant parameters by using PBD

Considering that a sudden decrease in pH in the acidic condition strongly affects the yield during the large scale production, optimization of cellular produc-

Table 2. Thirteen trials of the CCD matrix for (A) overlay air flow rate (LPM) and (B) agitation speed (RPM) with the response (Y) (mAb titer) (mg/l) and average pH of 15 days of culture (X)

Run no.	A	B	Y	X
1	10.0000	130.000	1710	6.96±0.05
2	15.0000	145.000	1600	7.10±0.15
3	10.0000	130.000	1750	6.95±0.05
4	17.0711	130.000	1700	7.10±0.10
5	2.9289	130.000	1000	6.9±0.0.05
6	5.0000	115.000	950	6.83±0.10
7	10.0000	108.787	1165	6.88±0.10
8	10.0000	151.213	1850	7.10±0.1
9	5.0000	145.000	1500	6.95±0.06
10	15.0000	115.000	1220	6.9±0.08
11	10.0000	130.000	1744	7.0±0.07
12	10.0000	130.000	1750	6.98±0.05
13	10.0000	130.000	1720	6.96±0.05

tivity necessitates control of different parameters affecting the culture pH. Accordingly, factors affecting lactate and CO₂ accumulation were considered as the main parameters that could affect culture pH. Hence, 18 fed-batch cultures were run according to the design of experiment at different glucose and dissolved oxygen set points, along with different gas flow rates (overlay) and agitation speeds to investigate the effects of process parameters on culture pH and cellular productivity. pH control through buffer addition at desired pH set point was also studied to reveal its specific impact on final mAb expression level. It has been previously reported that air/N₂ sparging can be used as a tool to control pH in large scale bioreactors⁸. Nonetheless, such sparging strategy results in foam formation and an increased rate of contamination. Moreover, sparging-induced foam may alter cell metabolism and gas removal rate²². Accordingly, air sparging was not involved in the Plackett-Burman screening design.

According to the PBD results, overlay flow rate and agitation speed were identified as the main factors significantly influencing mAb production ($p=0.024$ and $p=0.001$, respectively) (the variables with $p\leq 0.05$ are considered as significant factors) (Table 1). The main effects of process parameters are shown graphically using Pareto chart in figure 1. The positive coefficients (t-value) of significant parameters indicate that as the value increases, the dependent variable also (protein titer) increases (Figure 1), but a negative coefficient

Table 1. Experimental range, estimate, standard error, t-value and p-value for the factors screened in the PBD

Factor	Code value		Estimate	Standard error	t-value	p
	-1	+1				
DO set point (%)	40	60	8.2	33.3	0.12	0.905
Glucose set point (g/l)	1	3	-58.5	33.3	-0.88	0.399
Agitation speed (RPM)	115	145	311.5	33.3	4.68	0.001
Overlay flow rate (LPM)	5	15	174.8	33.3	2.62	0.024
Buffer addition	-	+	35.7	27.2	0.66	0.525

Designing a Strategy for pH Control to Improve CHO Cell Productivity in Bioreactor

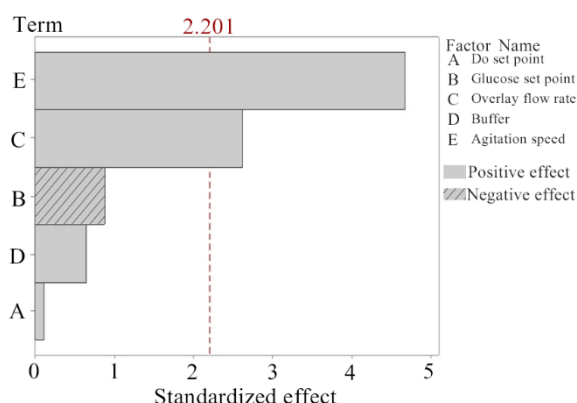


Figure 1. Pareto chart of standardized effect. The chart demonstrates agitation speed and overlay flow rate are the variables with significant effects on the response variable (mAb titer). The length of each bar corresponds to the standardized effect or interaction and the vertical line indicates the significant effect at a confidence interval of 95%.

indicates that if variable increases, response variable decreases. Accordingly, increasing agitation speed and overlay flow rate (two significant parameters) resulted in elevated levels of response variable (mAb expression level).

The rest of parameters (buffer addition, glucose and DO set points) were identified insignificant (Table 1). It was previously reported that at low oxygen levels

(low levels of DO set point), an enhanced formation of lactate leads to a drop in culture pH and productivity²³. As shown in table 3, DO set point in the examined ranges neither affected pH nor altered mAb expression level. This finding is in agreement with the results obtained by Restelli *et al* who did not find considerable differences in growth rate and final erythropoietin titer under a normoxic condition (normal oxygen concentrations)²⁴.

Glucose concentration can also be attributed to lactate accumulation. It has been shown that lactate formation slows down when glucose becomes limiting²⁵. Consequently, lactate concentration influences cellular specific productivity²⁶. In the present study, qLac was reported at levels of 1.7-3.3 pg/(cell×h) while the glucose set point varied between 1-3 g/l (Table 3). However, there was no correlation between lactate accumulation within the observed range and final resulted titer (p>0.05). This finding is consistent with the result of a previously published study reported that lactate accumulation is not capable of altering pH dramatically which is attributed to antibody production²⁰.

Although alkaline or acid addition and controlled CO₂ sparging are typically general solutions for pH control in bioreactors⁸, the analysis of PBD revealed that controlling pH fluctuations by buffer addition had no significant influence on the response variable (mAb titer) (Table 3). Compared to the untreated control culture, buffer addition to control pH resulted in a sub-

Table 3. Experiments using Plackett-Burman design for process variables contribution to mAb production in coded units. A) DO set point (%), B) glucose set point (g/l), C) overlay air flow rate (LPM), D) buffer addition, and E) agitation speed (RPM). The results of protein titer (mg/l), viability (%), pCO₂ (mmHg), and osmolality (mOsm/kg) at the end of the culture are presented. qLac (pg/(cell×h)) and pH are the average values of whole process (Samples were taken daily for 15 days)

Run no.	Factor A	Factor B	Factor C	Factor D	Factor E	Response (protein titer) (mg/l)	MVCC (10 ⁶ cells/ml)	Viability (%)	qLac (pg/(cell×h))	pCO ₂ (mmHg)	pH	Osmolality (mOsm/kg)
1	60	3	15	+	145	1659±100	26.0±0.1	55±2	2.9±0.1****	58±2****	7.04±0.1	494±10****
2	50	2	10	+	130	1400±150	25.8±0.07	65±4***	2.2±0.08****	90±3****	7.0±0.06	457±5
3	60	3	5	-	115	950±50	26.4±0.07	53±2	3.1±0.1****	155±5	6.80±0.11	441±5
4	60	1	15	+	115	1300±50	25.6±0.035	56±3	1.7±0.1	96±4****	6.95±0.08	499±10****
5	40	1	15	-	145	1650±100	27.1±0.035	55±2	1.9±0.1	60±4****	7.05±0.12	490±12***
6	40	3	15	-	145	1480±50	26.0±0.07	56±3	3.0±0.2****	62±5****	7.0±0.1	492±10***
7	40	3	5	+	115	1200±150	25.6±0.14	52±1	3.3±0.2****	145±8	6.93±0.05	520±8****
8	40	1	5	-	145	1400±50	26.75±0.07	68±4****	1.6±0.1	88±8****	6.94±0.08	440±5
9	40	1	5	+	115	1180±150	25.5±0.14	50±2	2.0±0.1**	150±10	6.92±0.02	518±8****
10	40	3	15	-	115	1290±80	26.2±0.28	54±3	3.3±0.12****	100±7****	6.9±0.1	496±10***
11	60	1	5	+	145	1500±80	25.95±0.07	67±4****	1.9±0.08	92±4****	6.97±0.05	459±5*
12	50	2	10	-	130	1640±150	26.6±0.17	67±3****	2.2±0.12****	70±3****	6.99±0.05	450±5
13	50	2	10	-	130	1760±150	26.8±0.035	69±4****	2.1±0.1***	71±4****	7.02±0.04	448±8
14	50	2	10	+	130	1600±150	27.07±0.1	69±3****	2.2±0.1****	67±6****	6.95±0.04	460±10
15	60	1	15	-	115	1370±80	27.05±0.07	56±2	2.0±0.08*	104±8****	6.95±0.08	500±7****
16	50	2	10	+	130	1430±100	26.45±0.07	68±4****	2.4±0.15****	70±9****	6.94±0.03	458±6
17	50	2	10	-	130	1540±100	26.55±0.07	67±3****	2.3±0.15****	74±5****	6.96±0.05	445±8
18	60	3	5	-	145	1470±80	26.15±0.07	67±3****	2.9±0.1****	85±5****	6.95±0.05	443±8

Asterisks indicate levels of statistically significant differences between experimental runs and control condition (Glucose set point, DO set point, overlay flow rate, and agitation speed were adjusted to 1 g/l, 50%, 5 LPM, and 115 RPM, respectively). (*p<0.05, **p<0.01, ***p<0.001 and ****p<0.0001).

stantial increase in osmolality (experiment run numbers 7 and 9) along with a dramatic reduction of $51 \pm 3\%$ in the cell viability. Even though after buffer addition culture pH was kept in the desired range, the final expression level of mAb was not improved (Table 1). Taken together, pH control by buffer addition was not efficient to enhance culture productivity either due to elevated levels of osmolality or loss of viability. Accordingly, Zhou *et al* reported the adverse effect of high osmolality on antibody-fusion protein production²⁷. In addition, it has been reported that pH control with alkaline addition can lead to high local pH excursions when mixing is insufficient²⁸.

Table 3 exhibits the Maximum Viable Cell Concentration (MVCC), cell viability, titer value, qLac, pCO₂ and pH profile for each PBD experiment. As the results show, the experimental runs with higher productivities are correlated with higher average pH value and lower pCO₂ levels. Nonetheless, there was not a statistically significant difference in MVCC among conditions [One-way analysis of variance (ANOVA) was applied to determine the statistical significance ($p=0.05$)]. According to the results, pCO₂ was found as the main parameter influencing culture pH where it is controlled by agitation speed and overlay flow rate.

Taken together, it can be hypothesized that control of pCO₂ is not only favorable but also urgent for an effective control of culture pH. Even though the negative consequences of elevated levels of pCO₂ have clearly been explained²⁹, an effective and practically possible control strategy has not been introduced yet for most of the industrial processes³⁰. Considering that CO₂ accumulation is affected by two main parameters (agitation speed and overlay air flow rate), effect of these parameters were tested by CCD to find the optimal level for each parameter.

Model building and statistical analysis based on CCD

Semi-large scale fed-batch cultures were carried out in 30 L bioreactor while agitation speed and overlay air flow rate were separately and simultaneously changed as variables to determine their single and interaction effects on the antibody titer using a central composite design. The expression levels of antibody which was measured for 13 cultures are summarized in table 2. The expression level of experiments ranged from 950 to 1850 mg/l, indicating the importance of identifying an optimal process condition. In order to evaluate the accuracy and reproducibility of the model, experiments were performed with center point values replicated five times (130 RPM and 110 LPM).

According to the CCD results, lower levels of overlay flow rate and agitation speed (run numbers 6 and 7) resulted in lower culture pH (6.83 ± 0.10 and 6.88 ± 0.10 , respectively) which then led to reduced productivity (950 and 1165 mg/l, respectively) (Table 2). To further determine the correlation of the expressed IgG levels and the corresponding variables, their relationship was modeled by the following equation.

Equation 3:

$$Y = -11272 + 327.4 A + 157.51 B - 11.685 A \times A - 0.5232 B \times B - 0.567A \times B$$

Y is the mAb titer (mg/l), and A and B are overlay flow rate (LPM) and agitation speed (RPM), respectively. The significance level of the equation was evaluated by F-test and the analysis of variance for response surface quadratic second order model (Table 4). According to the results, the square of agitation speed (B²) and overlay flow rate (A²) and the interaction term (AB) were statistically significant. The calculated F-value of agitation speed (1438.94) and overlay flow rate (270.05) and analysis of variance for selected parameters showed that the model was significant ($p \leq 0.05$). Furthermore, the regression model for mAb titer showed a significant value of the coefficient of determination (0.9975), a reasonable agreement for the predicted R² (0.9887) with the adjusted R² (0.9957). Additionally, the lack-of-fit value of 0.34 indicated the validity of the model with respect to the pure error.

The response surface and 2-D contour plots which were created using equation 3 are shown in figure 2. The elliptical contour plot indicated the significant interactions between the variables³¹. Figure 2 represents response surface plot of two independent variables. It can be seen that maximum mAb titer was obtained when overlay flow rate was kept at its middle level (10 LPM). Higher values of overlay flow rate led to an increase in culture medium concentration as a result of higher evaporation which induced higher osmolality of culture medium above 500 mOsm/kg. Sudden decrease in cell viability occurred at elevated osmolality. This might be the cause of reduced mAb titer at very high overlay flow rates (15 LPM). Otherwise,

Table 4. ANOVA results of the response surface quadratic model for mAb production

Source of variations	Sum of squares	Degree of freedom	Mean square	F-value	p
Regression	1178356	5	235671	559.55	0
Residual	2948	7	421		
Total	1181304	12			

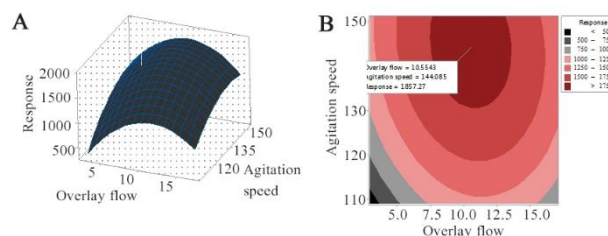


Figure 2. A) Three-dimensional and B) Contour graphs showing the effect of agitation speed (RPM) and overlay flow rate (LPM) on mAb production (mg/l). The plots showed that increasing the agitation speed to 150 RPM and overlay flow rate to 10 LPM resulted in optimal level of response (Protein titer).

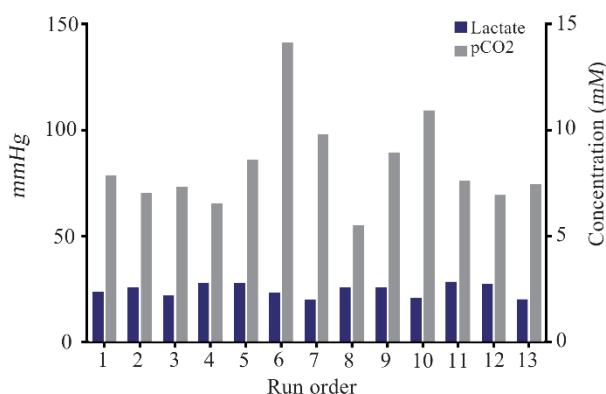


Figure 3. Influence of selected parameters on lactate and CO₂ production in CCD experimental design. Lactate and CO₂ concentrations during 13 runs of CCD experiments indicated that lactate accumulation is not different between cultures. Therefore, agitation speed and overlay flow rate control pH by changing pCO₂ in the culture.

lower flow rates were not effective in both pH control and CO₂ removal indicating that there is an optimal level of headspace aeration for cell culture operation. Similarly, the role of surface aeration in CO₂ clearance from the headspace was reported elsewhere³². Moreover, the mAb titer was enhanced by increasing the agitation speed from 110 to 150 RPM (Figure 2). A comparative analysis of lactate, pCO₂ and pH in the cultures grown at low agitation speed and the cultures agitated at high speed based on the estimation of the antibody titer revealed a different pH profile with the change in CO₂ accumulations but not in residual lactate concentrations (Figure 3). Therefore, it seems that the higher agitation speed was favorable for the CO₂ removal and pH control. These results are in contrast with findings of Shetty who reported the minimal effect of varying agitation rates on NS0 cell growth and productivity³³.

The CCD revealed that elevated levels of pCO₂ could be effectively controlled through interaction effect of overlay air flow rate and agitation speed in large scale cell culture. Hence, the control of pH in a desired range can be obtained by optimizing the overlay flow rate and agitation speed simultaneously.

Model validation

The point prediction feature of the RSM was used to calculate the optimal value of each factor (Figure 4). Three independent experiments were performed under the optimal condition to verify the model in which the agitation speed was 145 RPM and overlay air flow rate was 10.5 LPM. The appropriateness of the response model was justified by the strong correlation between the predicted and experimental values ($p > 0.05$). Following the optimization for process condition, a 51% increase in final protein titer was achieved.

Scale up study

With the optimized parameters, the cell culture was scaled up to 250 L bioreactor while a constant impeller

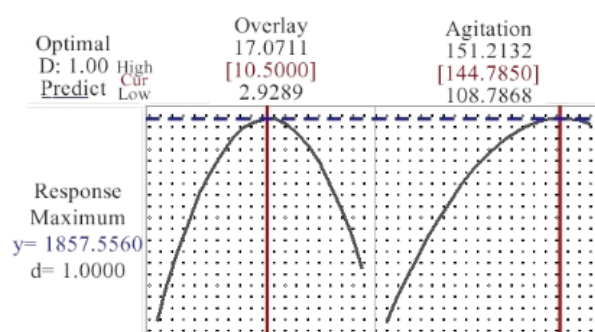


Figure 4. Prediction values of variables and final mAb titer using response optimizer module of Minitab. Agitation speed of 144.78 RPM and overlay flow rate of 10.5 LPM are predicted as optimal values for reaching the maximum mAb titer of 1857.5 mg/l.

power per volume (P/V) was considered as the scale up criterion. According to the results of two-way analysis of variance, there were no significant differences in maximum cell density, viability, mAb titer, pH, pCO₂, and lactate specific production between 30 L and 250 L bioreactors, indicating the reliability and robustness of the method (Figure 5). These results confirmed that the interaction effect of increasing headspace aeration and agitation speed was effective to improve the mAb production in pilot 250 L scale.

A preliminary study concerning the effect of a single factor (overlay air flow rate) on mAb titer revealed that increasing overlay flow rate singly is not enough for removal of CO₂ in large scale bioreactors (data not shown). This observation may be attributed to the lower surface area to volume ratio in large scale bioreactors where it resulted in longer gas retention time³⁴. Therefore, increasing the flow rate of surface aeration (overlay flow rate) singly was not considered as an efficient approach for CO₂ stripping. However, this problem was overcome by combining the optimal level of agitation speed and surface aeration which resulted in effective pH maintenance in range of 6.9-7.1 (Figure 5D).

Conclusion

pH is one of the most important parameters affecting productivity particularly in industrial manufacturing process. This is highly due to the fact that the highest specific growth rate and the maximum cell specific productivity are often achieved only over a narrow pH range. Accordingly, in the present study, the purpose was finding an efficient method to control pH through accelerating CO₂ removal. Optimization of effective parameters by CCD provided a good approximation to interaction effect of agitation speed and overlay flow rate for controlling pH and improving productivity. Even though the impact of agitation rate on the efficiency of CO₂ removal has been reported previously, only few studies investigated the effectiveness of overlay flow rate on CO₂ stripping. The obtained results

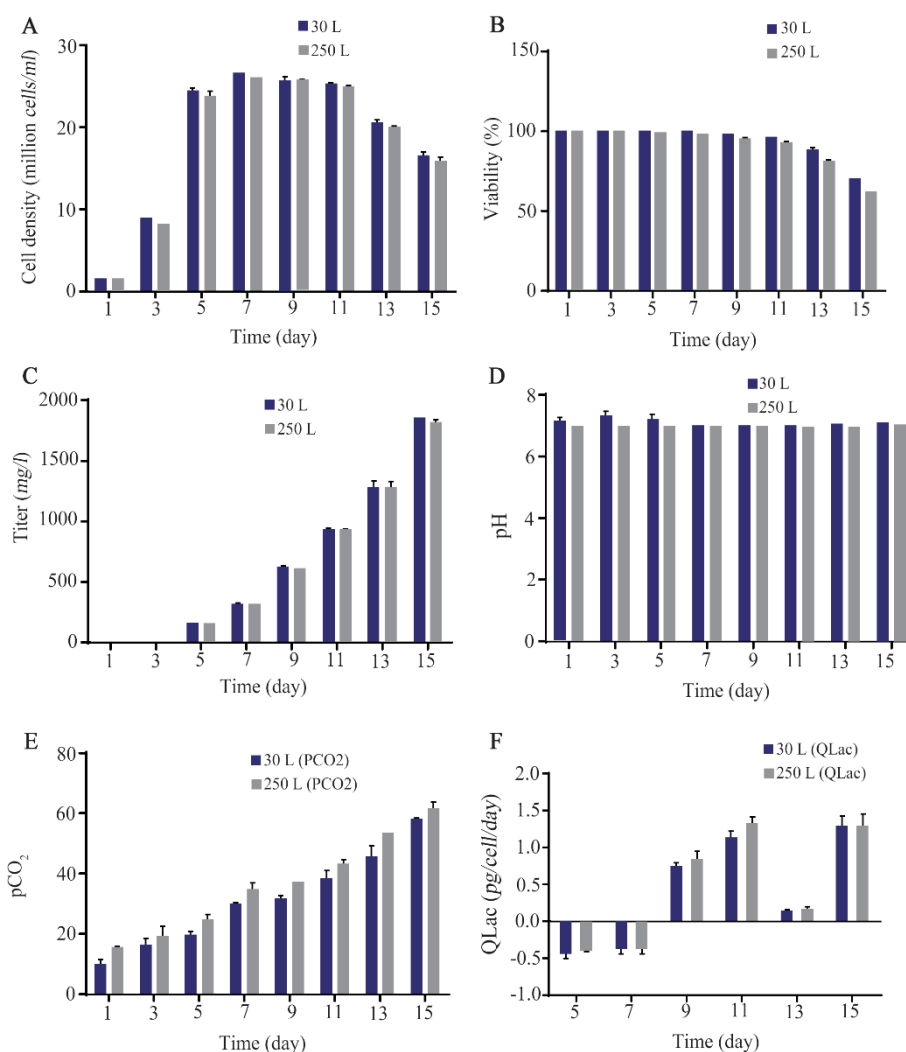


Figure 5. Culture performance in 30 L and 250 L bioreactors. A) MVCC (10^6 cells/ml), B) viability (%), C) titer (mg/L), D) offline pH, E) pCO₂ (mmHg), and F) lactate specific production (qLac) (pg/cell/h) during 15 days of culture. Bars represent standard deviation. The scalability of the predicted values are shown in the similar patterns between 30 L and 250 L scale bioreactors (n=3; mean±SD).

highlighted the positive interaction effects of these two parameters in controlling culture pH simultaneously followed by significant increases in CO₂ removal and mAb expression level (by about 51%). This strategy can be considered as an effective and easily applicable method for controlling pH and improving productivity in industrial manufacturing processes.

Acknowledgement

This work was performed in Biopharmaceutical Research Center of AryoGen Pharmed Inc., under ethical supervision of Alborz University of Medical Sciences with ethical code of IR.ABZUMS.REC.1398.038.

References

1. Ecker DM, Jones SD, Levine HL. The therapeutic monoclonal antibody market. *mAbs* 2014;7(1):9-14.

- Zhang J. Mammalian cell protein expression for biopharmaceutical production. *Biotechnol Adv* 2012;30(5):1158-70.
- Bandaranayake AD, Almo SC. Recent advances in mammalian protein production. *FEBS Lett* 2014;588(2):253-60.
- Gowtham YK. Understanding the Transcriptional Landscape of Chinese Hamster Ovary (CHO) Cell Lines Using Next-Generation Sequencing Technology, RNA-seq, under Industrially Relevant Conditions. Clemson University; PhD thesis, 2016.
- Brunner M, Fricke J, Kroll P, Herwig C. Investigation of the interactions of critical scale-up parameters (pH, pO₂ and pCO₂) on CHO batch performance and critical quality attributes. *Bioprocess Biosyst Eng* 2017;40(2):251-63.
- Kim HS, Lee GM. Differences in optimal pH and

- temperature for cell growth and antibody production between two Chinese hamster ovary clones derived from the same parental clone. *J Microbiol Biotechnol* 2007; 17(5):712-20.
7. Finter NB, Garland AJ, Telling RC. *Large-Scale Mammalian Cell Culture Technology*: 1st ed. New York: Taylor & Francis; 1990.
 8. Hoshan L, Jiang R, Moroney J, Bui A, Zhang X, Hang TC, et al. Effective bioreactor pH control using only sparging gases. *Biotechnol Prog* 2019;35(1):e2743.
 9. Satake H, Saito A, Sakata T. Elucidation of interfacial pH behaviour at the cell/substrate nanogap for in situ monitoring of cellular respiration. *Nanoscale* 2018;10(21):10130-6.
 10. Li J, Wong CL, Vijayasankaran N, Hudson T, Amanullah A. Feeding lactate for CHO cell culture processes: impact on culture metabolism and performance. *Biotechnol Bioengin* 2012;109(5):1173-86.
 11. Konakovsky V, Clemens C, Müller MM, Bechmann J, Berger M, Schlatter S, et al. Metabolic control in mammalian fed-batch cell cultures for reduced lactic acid accumulation and improved process robustness. *Bioengin (Basel)* 2016;3(1):5.
 12. Bowers J. *Sparger and Surface Gas Transfer for Cell Culture Bioreactors*. AIChE Annual meeting. 2008.
 13. Mostafa SS, Gu X. Strategies for improved dCO₂ removal in large-scale fed-batch cultures. *Biotechnol prog* 2003;19(1):45-51.
 14. Jacob B, Von Dassow P, Salisbury J, Navarro J, Vargas C. Impact of low pH/high pCO₂ on the physiological response and fatty acid content in diatom *Skeletonema pseudocostatum*. *J Mar Biol* 2016;97(2):1-9.
 15. Irfan K. Carbon dioxide control in bioreactors and the application of principal component analysis to cell culture process data. Newcastle University; PhD thesis, 2017.
 16. Xu S, Jiang R, Mueller R, Hoesli N, Kretz T, Bowers J, et al. Probing lactate metabolism variations in large-scale bioreactors. *Biotechnol Prog* 2018;34(3):756-66.
 17. Buchsteiner M, Quek LE, Gray P, Nielsen LK. Improving culture performance and antibody production in CHO cell culture processes by reducing the Warburg effect. *Biotechnol Bioengin* 2018;115(9):2315-27.
 18. Lee KM, Gilmore DF. Statistical experimental design for bioprocess modeling and optimization analysis. *Appl Biochem Biotechnol* 2006;135(2):101-16.
 19. Ji Y. Model based process design for bioprocess optimisation: case studies on precipitation with its applications in antibody purification: University College London; PhD thesis, 2012.
 20. Xu S, Chen H. High-density mammalian cell cultures in stirred-tank bioreactor without external pH control. *J Biotechnol* 2016;231:149-59.
 21. Mandenius CF, Brundin A. Bioprocess optimization using design-of-experiments methodology. *Biotechnol Prog* 2008;24(6):1191-203.
 22. Flickinger MC, Delvigne F, Lecomte J. Foam formation and control in bioreactors. *Encyclopedia of Industrial Biotechnology*. 1st ed. New York: Wiley online library; 2010.
 23. Zagari F, Jordan M, Stettler M, Broly H, Wurm FM. Lactate metabolism shift in CHO cell culture: the role of mitochondrial oxidative activity. *N Biotechnol* 2013;30(2):238-45.
 24. Restelli V, Wang MD, Huzel N, Ethier M, Perreault H, Butler M. The effect of dissolved oxygen on the production and the glycosylation profile of recombinant human erythropoietin produced from CHO cells. *Biotechnol Bioengin* 2006;94(3):481-94.
 25. Ozturk SS, Jorjani P, Taticek R, Lowe B, Shackelford S, Ladehoff-Guiles D. Kinetics of glucose metabolism and utilization of lactate in mammalian cell cultures. In: Carrondo MJT, et al. *Animal Cell Technology*. Netherlands: Kluwer Academic Publishers; 1997. p.355-360.
 26. Lao MS, Toth D. Effects of ammonium and lactate on growth and metabolism of a recombinant Chinese hamster ovary cell culture. *Biotechnol Prog* 1997;13(5):688-91.
 27. Zhou M, Crawford Y, Ng D, Tung J, Pynn AF, Meier A, et al. Decreasing lactate level and increasing antibody production in Chinese Hamster Ovary cells (CHO) by reducing the expression of lactate dehydrogenase and pyruvate dehydrogenase kinases. *J Biotechnol* 2011;153(1-2):27-34.
 28. Osman JJ, Birch J, Varley J. The response of GS-NS0 myeloma cells to pH shifts and pH perturbations. *Biotechnol Bioeng* 2001;75(1):63-73.
 29. Hu W, Berdugo C, Chalmers JJ. The potential of hydrodynamic damage to animal cells of industrial relevance: current understanding. *Cytotechnol* 2011;63(5):445-60.
 30. Qi HN. *Membrane and Micro-sparging Aerations in Long-term High-density Perfusion Cultures of Animal Cells*: Oregon State University; PhD thesis, 2002.
 31. Zhao LC, He Y, Deng X, Yang GL, Li W, Liang J, et al. Response surface modeling and optimization of accelerated solvent extraction of four lignans from *fructus schisandrae*. *Molecules* 2012;17(4):3618-29.
 32. Chopda VR, Holzberg T, Ge X, Folio B, Wong L, Tolosa M, et al. Real-time dissolved carbon dioxide monitoring II: Surface aeration intensification for efficient CO₂ removal in shake flasks and mini-bioreactors leads to superior growth and recombinant protein yields. *Biotechnol Bioengin* 2020;117(4):992-8.
 33. Shetty S. Effect of temperature and agitation rate variation on the growth of NS0 cell line in monoclonal antibody production. *bioRxiv* 2019;822601.
 34. Xing Z, Lewis AM, Borys MC, Li ZJ. A carbon dioxide stripping model for mammalian cell culture in manufacturing scale bioreactors. *Biotechnol Bioengin* 2017; 114(6):1184-94.