



OPEN

The third dimension in river restoration: how anthropogenic disturbance changes boundary conditions for ecological mitigation

Martin Guzelj¹✉, Christoph Hauer² & Gregory Egger³

The goals of the European Water Framework Directive changed the perspective on rivers from human to ecosystem-based river management. After decades of channelizing and damming rivers, restoration projects are applied with more or less successful outcomes. The anthropogenic influence put on rivers can change their physical parameters and result in a different morphological type of river. Using the Ammer River as an example, a comparison between applied systems of corridor determination based on historical maps and data; calculation of regime width; and the change in parameters and river typology are pointed out. The results showed (a) a change in stream power and morphology (b) great difference between the historical and the predicted river type and (c) that regulated rivers can have a near-natural morphology.

More than two thirds of rivers worldwide are highly impacted by human interference¹. The impact of urbanization on rivers has been described and identified as the “urban stream syndrome”². Some of the main impacts during the last decades are protection and mitigation measures against flooding or land erosion^{3–5}. As a result, rivers were channelized and/or straightened to be able to “control” water discharge in case of flooding^{1,6} with the highest priority being the creation of dams and levees⁷. For example, in Germany or in the USA, only about 2[%] of water bodies are still in a natural state^{8,9}. Additionally, rivers have been used for water supply; transforming kinetic energy to electrical power¹⁰; transportation; and drainage of former wetlands for use for agriculture or settlements. All these factors have significant impacts on river morphology and ecological integrity of rivers^{10–13}. However, when planning the use of water bodies for human needs ecological impacts were rarely considered¹⁸.

With the introduction of the European Water Framework Directive (WFD) a need to focus on a broader spectrum of functions of rivers is given as a good ecological status (GES) for rivers¹⁴ is requested with a basin wide approach^{15–17}. As a higher level of water quality is required by 2021 (or 2027 at the latest¹⁵), restoration projects are taking place all through Europe. Despite EU directives, cultural differences in restoration trends have been observed throughout Europe¹⁸. Different restoration approaches¹⁹ had been developed on reach-scale or small-scale basis, and established in the past^{19–23}, with most following the theory that habitat heterogeneity leads to a higher biodiversity. However, this theory was rarely a consideration in the short or mid-term perspective^{10,24,25}.

According to Shields²⁶, small-scale restorations have a higher social acceptance than large-scale restorations, and are more cost effective, while reach-scaled projects show better ecological results related to river rehabilitation. Monitoring showed that not every rehabilitation method is suitable for every morphological type of river^{24,26–28}. Measures being successful in the trout region may have not the same effect in lowland rivers. Pretty et al.²⁴ pointed out that large scale restoration or habitat heterogeneity can have negative impacts (e.g. increase in bank erosion, change in water depth, incised channels, loss of flat water habitats) on fish habitats and local populations whereas morphologically-suitable measures can lead to an increase in species and populations²³. Other approaches, such as re-meandering of straightened rivers, showed short-term increase in macro-invertebrates

¹Department of Water, Atmosphere and Environment, Institute of Water Management, Hydrology and Hydraulic Engineering, BOKU, University of Natural Resources and Applied Life Sciences Vienna, Vienna, Austria. ²Christian Doppler Laboratory for Sediment Research and Management, Institute of Water Management, Hydrology and Hydraulic Engineering, BOKU, University of Natural Resources and Applied Life Sciences Vienna, Vienna, Austria. ³Institute of Geography and Geoecology, Karlsruhe Institute of Technology, Karlsruhe, Germany. ✉email: martin.guzelj@yahoo.de

but as the meanders were stabilized with boulders, the morphological effects of erosion and deposition were so limited that this effect faded after a few years¹⁰. The most sustainable biodiversity increase was derived from large-scale projects where morphological processes have been enhanced, rather than from small-scale, short-term creation of in-stream habitats^{29,30}.

Different methods to restore natural diversity in rivers are utilized depending on the aim of the projects (creating habitats for certain species, restoring the historical river pattern to reintroduce historical fauna, etc.)³¹. In most cases these projects attempt to utilise historical status (using two dimensional maps) to determine the space needed. Even though a lot of effort can be put into those projects, including construction work, excavating of former river shapes and beds²⁶.

Some projects, such as the restoration of the Skjern river in Denmark²², focus on the re-installation of the historical riverbed. In this case, the entire riverbed was reverted to the historical flow path (by excavation). Projects like this require major re-construction and therefore have high costs, and take a long time to recover from construction work to full ecological functionality. Even if outcomes are successful, long-term disruption of the ecological functionality from the construction work need to be considered. Alternatively, this disturbance in the system can also be seen as part of the dynamic change to a river system and can lead to succession processes in vegetation and therefore enhance the entire ecological situation³².

In France, a process-based approach has proved to be successful on a larger scale. The “espace de liberté”³³ is based on the historical range of river transition. In this river restoration approach, a chosen section of the river is given a specific corridor where self-forming processes are responsible for channel formation and turn-overs^{34,35}. The concept is based on several parameters, including (1) the historical corridor, which is described by the width of the morphologically active river bed or bandwidth of the meandering sector and (2) the functional corridor width, which is the minimum corridor in which morphological processes can naturally establish. For the functional corridor, restrictions, due to buildings, settlements and infrastructure^{35,36}, which have been built in the former riparian area, are subtracted from the historical area and added to the other (non-impacted) side of the river. For the concept of the “espace de liberté”, little anthropogenic mitigation is required, with only space for the self-forming processes requested.

The “espace de liberté” is not the only concept of its kind, nor is it the oldest in application. There are similar approaches in setting up corridors for river transitions throughout the world, including in northern India (which was already described in 1903³⁷), in the USA³⁸ and in Europe³⁹. In most of these cases, the river catchment and reaches were previously undisturbed. This implies that the river has retained basically the same morphological type for the last few decades.

As mentioned before, only about 2[%] of rivers in Germany are still in a “natural” condition. Therefore, approximately 98[%] are impacted or strongly affected by human alteration such as straightening, lowering of the riverbed, alteration of banks (in meander bends) and other factors. One question arising is the impact of anthropogenic pressures on riverine landscapes and floodplains. For example the Tagliamento River in northern Italy shows a local difference in morphological patterns where pressure is applied to the riverbed by gravel mining and a forced narrowing by levees³⁹.

The classifications of morphological river patterns⁴⁰ are based on characteristic physical parameters including e.g. (1) channel width and depth, (2) flow velocity, (3) slope and parameters concerning, (4) bed material and (5) sediment load. If one or more of these parameters change, the river morphology response will change as well.

Various studies regarding river restoration projects have assessed that most restoration projects throughout the world have had little success (or have failed) due to too little understanding of the geomorphological and hydraulic processes, of changed conditions in riverbeds or discharge patterns, or of ecological interaction between biota-fauna and the mentioned processes¹⁹. Even though maps can be used to determine both the width of the riparian area and historical river types, very little information about the parameters used for river morphology is given by these^{26,41}. Maps usually show only the two-dimensional spatial location of the riverbed, but lack information about grain size, erodible material, changes in slope or channel discharge capacity⁴².

There has been a call for scientific assessment of project areas that shows the current state of the site and helps practitioners to choose the right approach based on the actual situation on site rather than on historical approaches^{27,30,43–45}. However, this has not yet been implemented in a reliable or practical way. Thus based on the lack of knowledge regarding various concepts in river restoration, the following research question has been formulated for this article:

How important are changes in the physical variables of high flows (e.g. flow velocity, stream power, bed shear stress) due to channel modification for a successful prediction and implementation of river restoration concepts? As side-effects the uncertainties in state-of-the-art concepts for corridor determination were highlighted and targets for future research suggested.

The research questions were tested at the Ammer River/Germany. At this river (1) historical data is well known, and (2) significant human alterations are evidenced along the river section. This makes the river an interesting case study to test both research questions. Different restoration concepts like the “espace de liberté”³³ and development corridor⁴⁶ were applied, in which the required hydraulic parameters for flood dynamics were derived by hydrodynamic-numerical modelling. For the determination of the river type, remaining oxbows and the actual riverbed were measured and compared to see if there is a difference in parameters^{47,48}.

Site description. The Ammer River drains a catchment of 600[km²]⁴⁹. Starting as Linder at the border between Austria and Germany (47°33'50"N 10°56'10"E) the river seeps into the karst and surfaces southeast of Oberammergau as Ammer springs. Over a length of 80[km], the Ammer River crosses various zones of the limestone Alps and the northern alpine foothills before it flows into Lake Ammersee⁴⁹. The research area is situ-

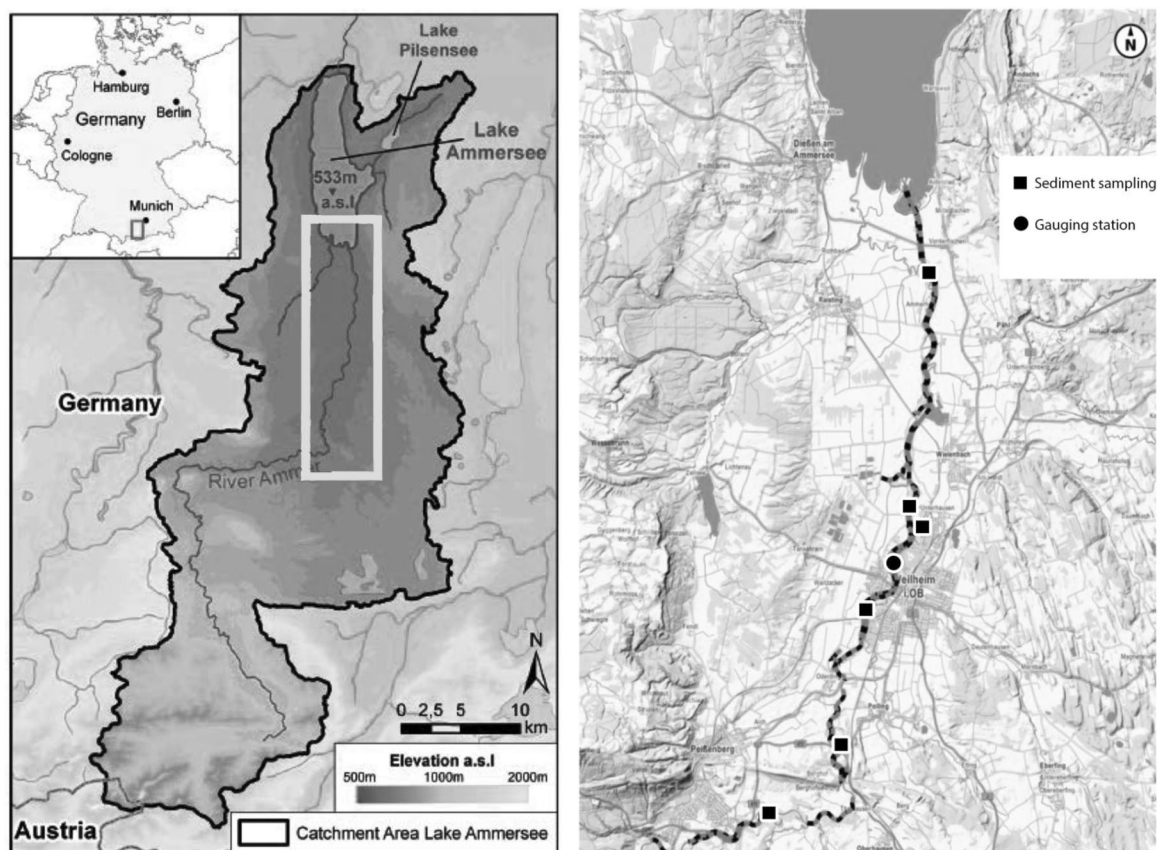


Figure 1. Location of the Ammer River catchment with research area marked and the channelized river-section indicated by levees along the research section on Ammer River (Sources:⁵⁷, edited with ArcMap 10.4⁵⁸).

Gauging station Weilheim	Discharge values	HQ _T
	NQ = 26 m ³ s ⁻¹	HQ ₁ = 120 m ³ s ⁻¹
	MNQ = 56 m ³ s ⁻¹	HQ ₂ = 150 m ³ s ⁻¹
	MQ = 153 m ³ s ⁻¹	HQ ₅ = 205 m ³ s ⁻¹
	MHQ = 164 m ³ s ⁻¹	HQ ₁₀ = 255 m ³ s ⁻¹
	HQ _{max} = 649 m ³ s ⁻¹	HQ ₂₀ = 315 m ³ s ⁻¹
		HQ ₅₀ = 410 m ³ s ⁻¹
		HQ ₁₀₀ = 480 m ³ s ⁻¹
		HQ ₁₀₀₀ = 750 m ³ s ⁻¹

Table 1. Average discharge and calculated flood annuities with correlating discharge values for the gauging station Weilheim for the period from 1925 to 2018. NQ low flow discharge, MNQ mean low flow discharge, MQ mean discharge, MHQ mean highflow event, HQ_{max} maximum discharge⁶⁰.

ated between Peißenberg (47°46'34.2"N 11°03'15.5"E) at the end of the Ammer Gorge and the Ammer Delta (47°56'52.2"N 11°08'02.0"E) (Fig. 1).

Based in the middle of the South German Molasse Basin (SGMB)⁵⁰, the Lake Ammersee basin was formed by glacial movement. The main waterbody in this area is the name-giving Lake Ammersee, which is a pre-alpine lake. The Ammer River is the main river in the investigated catchment. It has alpine characteristics, with high amounts of sediments. The lake was already partially naturally filled by gravel, sand and clay as alluvial parts, as well as lake sediments and turf^{51–55}. The Ammer valley is dominated by kalkpaternia soiltype on top of limestone sands and gravel. According to the Bavarian Institute for Agriculture, the gravel layer starts at about 0.5 to 1 [m] depth⁵⁶. According to the data provided by Copernicus Land Monitoring Service (CLMS) the research area is dominantly of agricultural land use (grassland 50.1 [%], forest areas 23.1 [%] and cropland 13.7 [%]) and urban areas (13.0 [%]).

The nival and sub-alpine characteristic of the runoff regime is described as mainly rainfall-induced high flood events in summer, and low water levels in winter (see Table 1)⁴⁶. The permanent gauging station of Weilheim⁵⁹

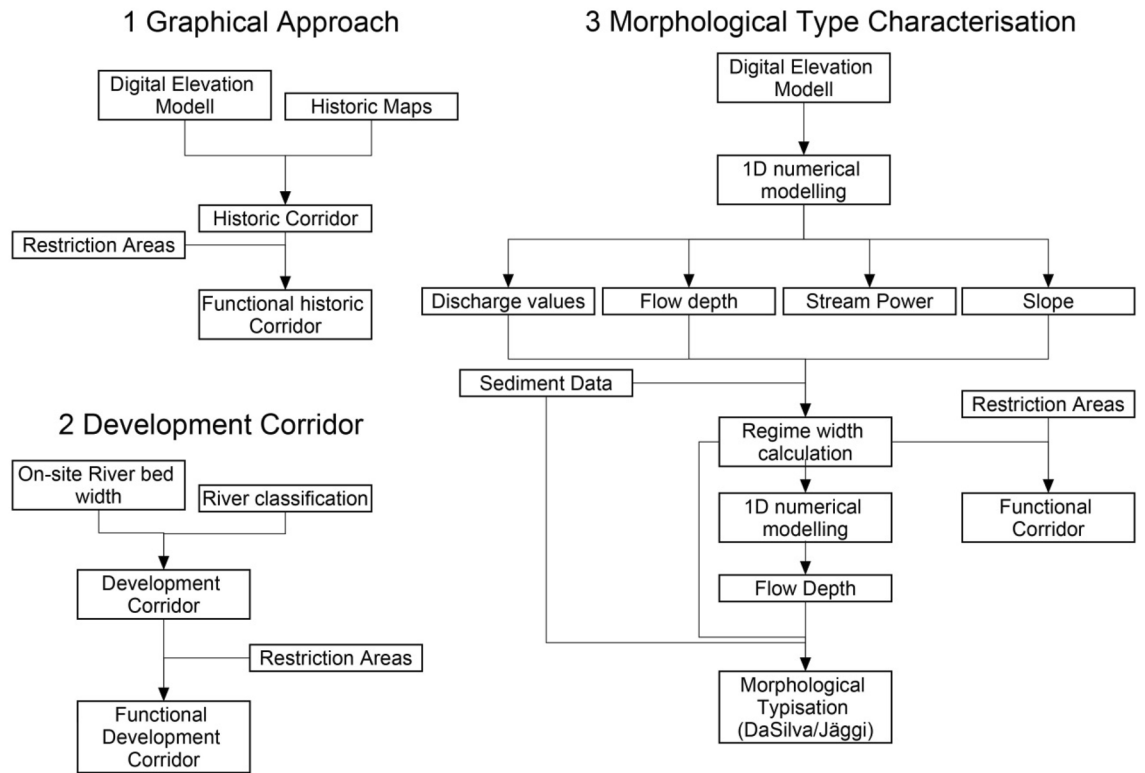


Figure 2. Work flow diagram with input data needed for (1) graphical approaches (historical corridor and historical maps used as basis) (2) development corridor approach (riverbed width and classification of rivers⁵³) and (3) the 3 dimensional approach with morphological type characterization.

is situated in the section chosen for the analysis. The mean daily discharge records of the station go back to 1925⁶⁰. The average discharge and the annuity values derived from the WWA Weilheim are presented in Table 1.

The first recorded modifications (e.g. outlets for mills) in the Ammer catchment took place in the early sixteenth century. The first morphological modifications of river bends were undertaken in mid-nineteenth century to ease the transport of wood logs. However, the main engineering measures took place between 1920 and 1937, e.g. straightening and the construction of levees. Between 1920 and 1924, the river mouth into Lake Ammersee was “reconstructed” as part of the straightening program for flood protection. At the time, the location was changed from the western part of the bay (47°56′24.2″N 11°07′05.6″E) to the village of Fischen (47°56′13.9″N 11°08′31.7″E). The main goal of the construction work in the late 1930s was to create work for the people and was not really based on flood control issues. This had special impact on the flood protection scheme upstream of Weilheim. The entire flow path between the city of Weilheim and Lake Ammersee was reduced from 25[km] to about 13[km] by channel rectification. Alongside the main channel, the swamp and turf areas were drained to gain more agricultural land and to be able to harvest the turf. The river bed was lowered to ensure drainage throughout the year⁴⁹.

According to the GIS platform of the Bavarian Ministry for Digitalisation, Broadband and Surveying, and the WWA Weilheim, almost the whole section is channelized with levees⁵⁷ (as shown in Fig. 1). The levees are part of the applied flood protection scheme which is constructed to the extension of HQ₃₀₀ highflood event according to the WWA Weilheim.

Methodology

The methods applied in this study are based on: (1) analysis of historical maps to derive the former riparian area, followed by (2) analyses of the physical parameters described earlier. Additionally, (3) hydrodynamic-numerical modelling has been used to assess changes of the in-stream parameters such as stream power, flow depth and bankfull discharge. This was later compared to the historical channel characteristics and the straightened, regulated river section. As a final step (4) the morphological type of the river was determined using DaSilva’s and Jäggi’s classification based on the data derived from the comparison.

Analysis of historical corridors. The aim of the presented study was to investigate the range of complexity needed for the determination of river corridors in terms of restoration based on self-forming processes. The study increases in complexity of analysis from the “traditional” analysis of historical maps, to methods, which included the “third-dimension” of channel characterisation, including hydrodynamic-numerical modelling (Fig. 2). In the following section, the methods of the determination of the various corridors (graphical and calculated) are presented. First, (1) the graphical approach has been used as defined in the concept of the

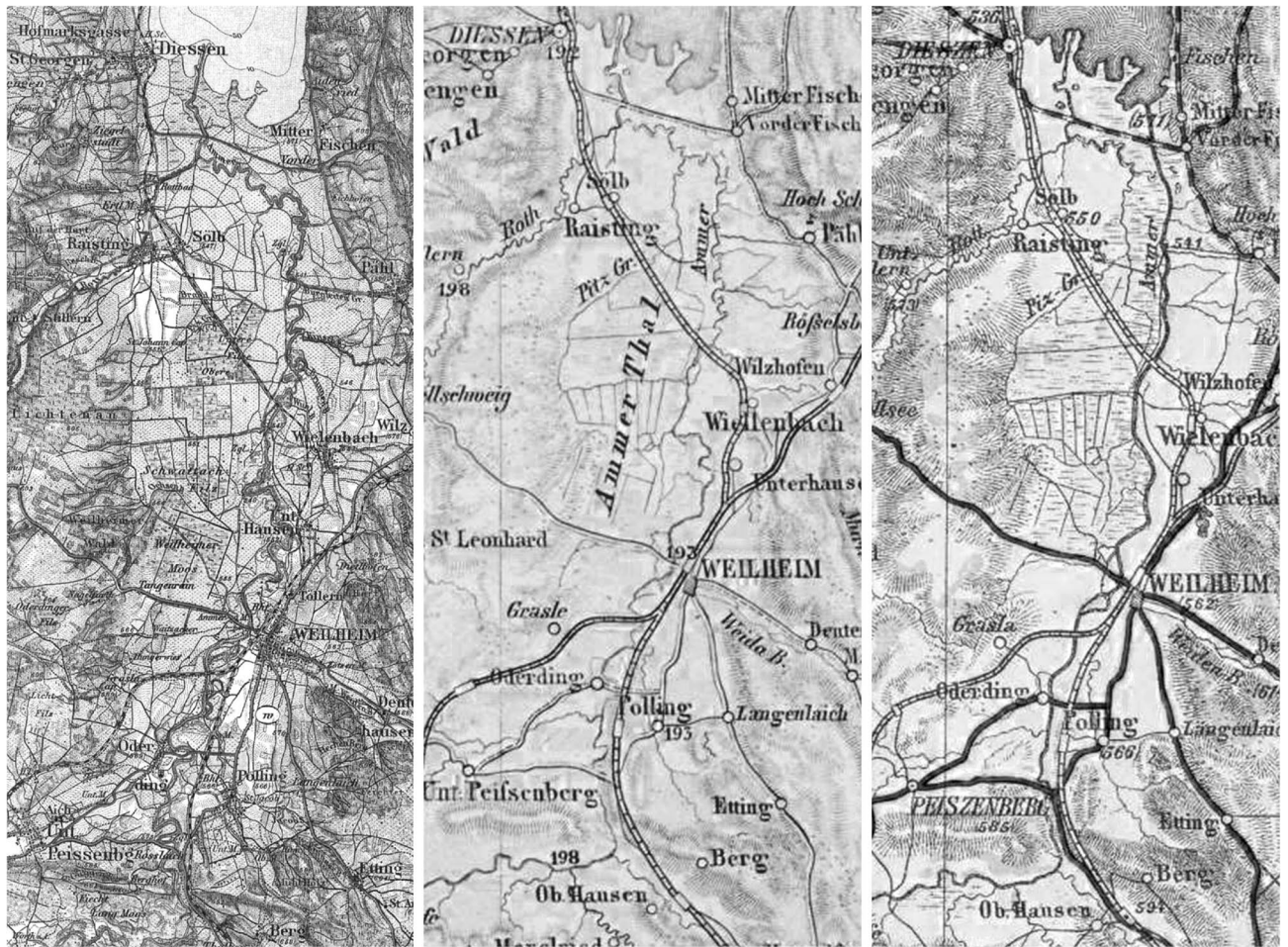


Figure 3. Historical maps of Ammer region 1902⁶¹, 1930⁶², 1941⁶³ (12.11.2019) used for determination of the historical shift of the riverbed showing the alteration by human interference due to regulation and flood protection schemes.

“espace de liberté” suggested to define the historical corridor, while (2) the calculated development corridor from governmental suggestions for practitioners has been used to derive the functional corridor. Next (3) the hydraulic-geometry-based approaches were used to include the third-dimension for the first time in the analysis to determine first and second order erosional corridors, and finally (4) channel patterns are predicted based on the results of (3), which may evolve due to the erosional width of the first and second order channel changes.

Graphical analysis: two dimensional approach. The concept of “espace de liberté” is based on the idea that the river should restore itself with very little human interference within the limits of the historically active channel and floodplains (compare Fig. 2)³⁵. To address the questions mentioned before, historical maps of the river section between Peißenberg and the river mouth into Lake Ammersee have been gathered and analysed. Maps available from the State Library of Bavaria⁶¹ were used to assess the flowpath of the historical Ammer River. The maps were geo-referenced with ArcGIS on a multipoint basis to each other in a first step and later on with the actual digital elevation model (DEM). To be able to reference the maps, intersections on roads as well as landmarks and building structures were taken into account. Special focus was set on maps in which the river was shown in a way which represents the morphological patterns along its flow path. With this restriction, the resulting maps chosen for further analysis (Fig. 3) were from the years (1) 1842⁶¹ as the earliest map, (2) 1902⁶¹ as the map before the first straightening, (3) 1930⁶² and (4) 1941⁶³ as last historical map due to the highly changed flow path. Examples of the maps are shown in Fig. 3. The centreline of the historical river path was used in combination with the measured width of the remaining undisturbed oxbows. The centrelines were buffered in ArcGIS and the outer parts of the river bends connected with a polygon. Those maps are crucial for the definition of the historic morphological corridor C_{hist} which defines the maximum extension for the “espace de liberté”, the former river shape and the morphological processes. It also is an indicator of the riparian area which previously surrounded the river.

Developing corridor: two dimensional approach. In 2014, the German Ministry for Environment published a guideline (as part of the WFD goals), in which each river in Germany is assigned into one of 21 classes⁵³. For each class, typical characteristics, morphological shapes and cross-sectional appearance of a natu-

ral state river are explained and defined. According to Dahm et al.⁴⁶ the Ammer River is part of the Limestone Alps rivers. For the minimum and maximum developing corridor (W_{dev_min} and W_{dev_max}) the average constructed riverbed width W_{constr} had to be calculated by using geometrical data from observations of current anthropogenically-modified status (Fig. 2). According to the advice of the German Ministry for Environment, for rivers in the limestone alps region⁴⁶ the single steps are:

$$W_{nat_pot} = 5W_{constr} \quad (1)$$

$$W_{dev_min} = 2W_{nat_pot} \quad (2)$$

$$W_{dev_max} = 5W_{nat_pot} \quad (3)$$

whereas W_{nat_pot} stands for the potential natural riverbed width which is calculated from W_{constr} . Charrier (2012) suggests to use ten times the bankfull width as an equilibrium width for the “espace de liberté”, which equals W_{dev_min} ⁶⁴. This calculated width was applied as a buffer zone in ArcGIS to the actual river line to define the corridors.

By overlaying the (1) historical corridor, (2) the actual waterbody (including main channel and remaining oxbows) and the W_{dev_min} and W_{dev_max} corridors, the functional corridor is defined as the intersected area. Going on from the resulting polygon, industrial and settlement areas as well as infrastructure were subtracted in ArcGIS and the resulting area is the theoretical corridor the river would need for its natural development.

Hydraulic: geometry equations: three dimensional approach. Deriving from the regime theory, which is based on the idea that a morphologically active flood erodes in all directions up to a natural equilibrium width, various authors set up empiric formulas to calculate the final extension of the riverbed (Fig. 2). For the presented study it was necessary to apply these formulas from opening up a regulated channel to the status of the full development of a riverbed which can be divided into primary and secondary erosion. The later explained formulas after Yalin (1992) and Ashmore (2001) were chosen due to the fact that the parameters for the setup best suit the existing data from field research. Values used for calculating derived from: (1) flood statistics for HQ_1 ; (2) the numerical model for the bank full discharge HQ_{bf} and the slope J ; and (3) sampling data for the median diameter of the top layer of the bed material.

Corridor of primary erosion. After the removal of stabilizing elements, the river channel widens but remains “straight” meaning the morphological type of river remains. This process is known as primary erosion. The main factors are the discharge (Q) and the grain size (e.g. d_{50}). The resulting width is the equilibrium width (b_{eq1}) in meters⁶⁵.

$$b_{eq1} = 1.42 \cdot \sqrt{\frac{Q}{u_*}} = 1.5 \cdot \frac{Q^{0.5}}{d_m^{0.25}} \quad (4)$$

Ackers and Charlton⁶⁶ discovered that depending on the discharge, rivers with lesser slopes ($J < 0.3\%$) have a higher tendency to stop side erosion than rivers with greater slopes ($J > 0.5\%$).

Corridor for secondary erosion. As soon as the process of primary erosion has reached its maximum width, secondary erosion processes may occur. These processes are responsible for the formation of riverbed structures (ripples, banks, etc.) as well as for changes in the river profile (e.g. braiding, shifting islands). In literature, different formula can be found⁶⁷⁻⁷¹. For this study, the formula after Ashmore (2001) was chosen due to the best accordance for the empirical setup of the formula and the onsite data.

$$b_{eq,sec} = 0.0098 \cdot (\rho \cdot g \cdot Q \cdot J)^{0.7777} \cdot d_{50}^{-0.7} \quad (5)$$

with ρ [kg m^{-3}] is the water density, g [m s^{-2}] is gravity and Q [$\text{m}^3 \text{s}^{-1}$] equals the morphological active discharge (HQ_1 , HQ_2).

The result shows the width of the eroded corridor and therefore the morphological active channel. This width has been used as input for the morphological type characterisation.

Morphological type characterisation: three dimensional approach. It was necessary to evaluate if present boundary conditions of channel formation fit with the historical channel characteristics. Bathymetric data have been collected for the years 2004 and 2009. These data of the regulated river were further compared to the historical (unregulated) situation by measuring the bathymetry of the historic river bed (see Fig. 3) derived from remaining oxbows. Therefore, irregular distanced cross-sections ($n = 7,384$ including interpolated cross-sections) were placed in the Digital Elevation Model (DEM) and were cut through the channelized river section and the remaining oxbows along the research area. The average degradation for 3 sections was determined by measuring the height difference between the lowest points. The 3 sections are geographically based: (1) Peißenberg ($47^\circ 46' 45.6'' \text{N}$ $11^\circ 04' 27.9'' \text{E}$), (2) Unterhausen ($47^\circ 51' 44.8'' \text{N}$ $11^\circ 08' 32.1'' \text{E}$), and (3) Vorderfischen at the outlet to the former river bed ($47^\circ 55' 30.7'' \text{N}$ $11^\circ 08' 44.9'' \text{E}$). The data from the DEM (derived from the high flood model) had been edited from LIDAR data, but did not reflect the historical situation in an adequate way. At the sections of Unterhausen ($47^\circ 51' 36.5'' \text{N}$ $11^\circ 08' 45.6'' \text{E}$) and around Pähl ($47^\circ 91' 35.1'' \text{N}$ $11^\circ 14' 97.9'' \text{E}$), additional cross sections ($n = 23$) were gathered with nine cross-sections in the first section and 14 along three oxbows

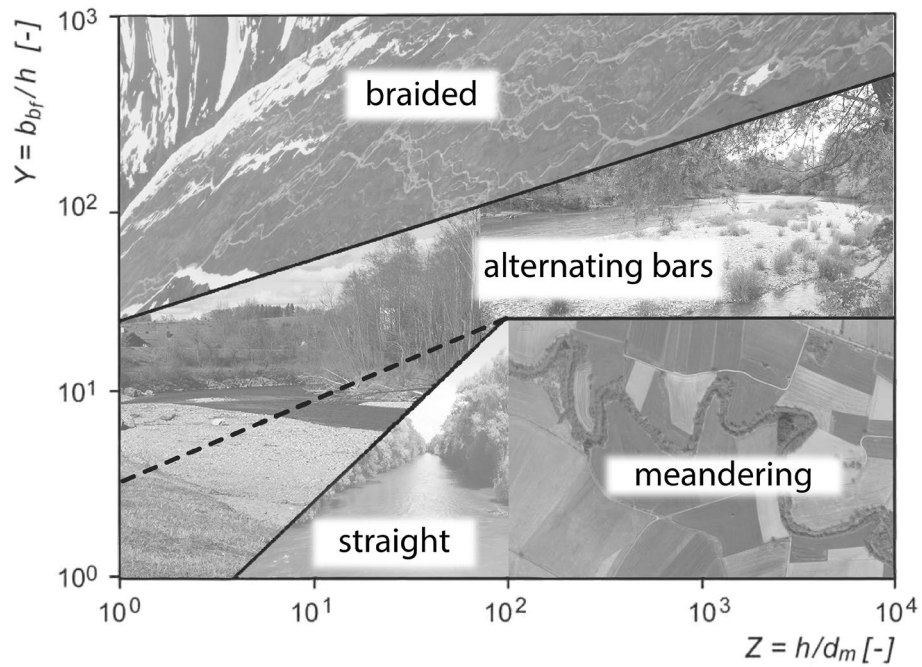


Figure 4. Modified morphological river pattern diagram after DaSilva (1991) and Zarn for determining river characterization on behalf of discharge, flow depth and the width of the wetted area (compare⁷⁵).

further downstream. This was necessary as the oxbows had been prone to siltation over the last decades due to material input from small tributaries⁷². To be able to determine the historical slope and other relevant parameters, it was important that the data gathered reflect the situation before the river regulation. Therefore the points collected were measured from the former gravel bed though the layers of accumulated fine materials^{73,74}. The siltation layers were not part of the research for this paper.

In a second step (Fig. 2), and for the definition of the morphological channel types, the measured and predicted parameters were analysed according to Jäggi (1983) and DaSilva (1991) to be able to compare the historical river type and resulting river pattern due to the onsite measured parameters resulting in X, Y, Z and the slope J. For the regime width, a substitutional cross-section was calculated by linear extrapolation:

$$X = \frac{b}{d_m} \tag{6}$$

$$Y = \frac{b}{h} \tag{7}$$

$$Z = \frac{h}{d_m} \tag{8}$$

where b represents the water surface width and h is the flow depth.

The correlation between X, Y, Z and J, and the resulting morphological type of rivers are shown in Figs. 4 and 5. While the definition after Zarn and DaSilva was used to define the pattern with the current parameters, Jäggi’s diagram was used to analyse the resulting pattern in more detail. This diagram defines the threshold level between a straight river with no banks, single channel river with alternating banks, and a multi-channel or braided river as shown in the graph (Fig. 5). According to Jäggi (1983) there is a correlation between the slope J, the grain size, and the width of the wetted area (X)⁴⁷.

Hydraulic modelling. Hydrodynamic-numerical modelling was applied for the characterisation of channel development (approaches 3 and 4) and for analysing the impact of hydro-morphological parameters on river forming processes for the selected river section. Here, a one-dimensional hydrodynamic-numerical model was applied. One-dimensional interpretation of governing equations has found a widespread application in hydraulic and environmental engineering^{76,77}. The main equations on which 1D models are based are the principles of (1) mass balance (Eq. 9) and (2) the balance of momentum continuity (Eq. 10)^{78,79}.

$$\frac{\delta A_T}{\delta t} + \frac{\delta Q}{\delta x} - q_l = 0 \tag{9}$$

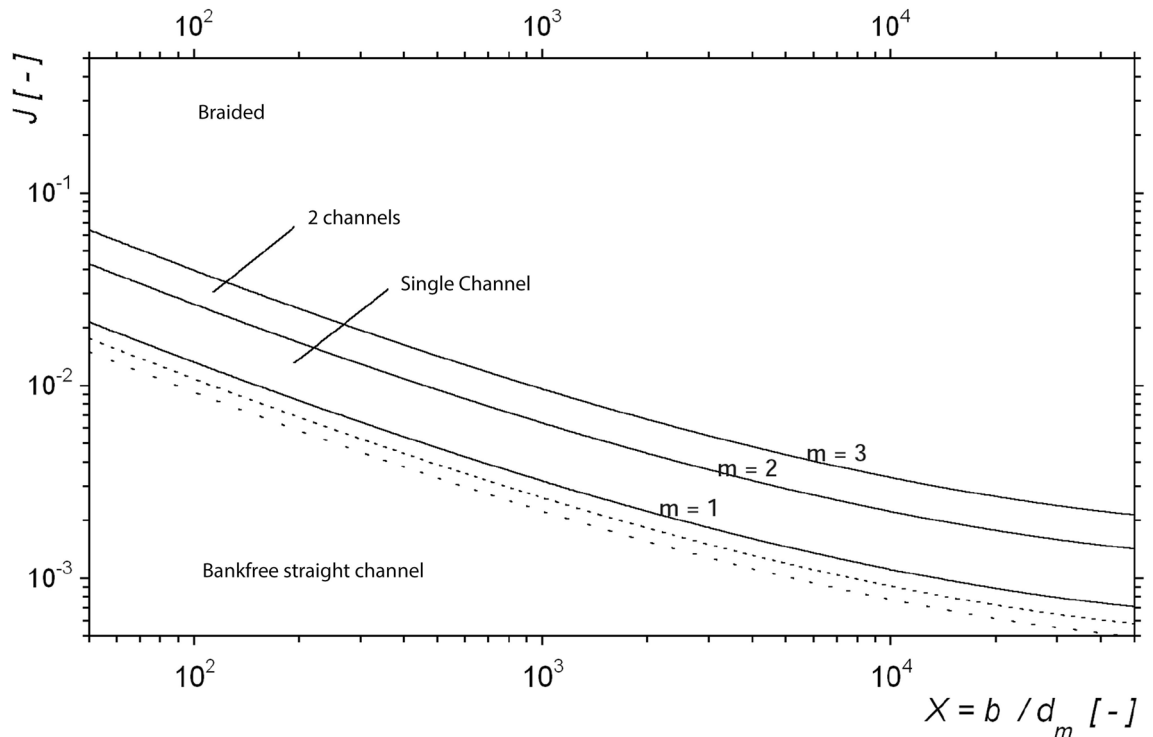


Figure 5. Diagram after Jäggi (1983) for the determination of river types between straight river, single channel and multi-channel rivers⁴⁷.

where $Q_{(x,t)}$ = discharge [$\text{m}^3 \text{s}^{-1}$], A_T = cross-sectional area [m^2], q_l = lateral inflow per unit length [$\text{m}^2 \text{s}^{-1}$].

$$\frac{\delta Q}{\delta t} + \frac{\delta QV}{\delta x} + gA \left(\frac{\delta z}{\delta x} + S_f \right) = 0 \quad (10)$$

where S_f = friction slope [-], z = water surface [m] (equal to $z_0 + h$ (water depth of control volume)), V = control volume [m^3], g = gravitational acceleration [ms^{-2}].

For the analysis, the one-dimensional unsteady flow model HEC-RAS was used. The model was chosen because of its capabilities for sub-/supercritical modelling⁸⁰ and multifunctional parameter analysis for channel flow. The modelling package HEC-RAS uses the 1D St. Venant equation to calculate open channel flow, based on a four-point implicit finite difference scheme, allowing modelling over larger time steps than explicit numerical schemes⁸⁰. For the applied one-dimensional approach, phenomena such as the Coriolis force have been neglected.

Using software bankfull discharge capacity [$\text{m}^3 \text{s}^{-1}$], flow velocity [ms^{-1}], the specific stream power [$\text{Nm}^{-1} \text{s}^{-1}$], as well as the slope of the riverbed [-] on the reach-scale were calculated. For modelling, a representative section close to Unterhausen was chosen ($47^\circ 51' 33.2'' \text{N}$ $11^\circ 08' 31.1'' \text{E}$ upstream– $47^\circ 51' 48.8'' \text{N}$ $11^\circ 08' 34.6'' \text{E}$ downstream) including both, the historical bathymetry and the regulated existing one.

Bed material. Grain size distribution is one of the controlling factors in river morphology⁸¹. Samples to determine the grain size distribution were collected at four stations (Peißenberg, Oderding, Unterhausen, Vorderfischen) and one sample was taken out of the oxbow at Unterhausen. To receive representative data, the material was collected in a low water period in early spring (2017). On all sections, a surface layer and a sub-surface layer sample was collected. The samples were taken from gravel bars in the river and analysed at the lab of the University for Life Science, Vienna. The resulting grain size distributions were used to determine the d_{50} or d_m , which is used for the calculations as well for the corridors as the river type pattern. In combination with the samples of bed material taken in each of the modelling sections, the actual situation on the river can be properly described. The grain size distribution of the samples and the hydraulic characterization by various parameters in the section were also the basis for the determination of the evolving river type.

Hydrology. The gauging station of Weilheim is situated within the research area. The discharge has been recorded since 1925. To define the current situation and to analyse possible trends in discharge, the available dataset (1926–2017) was taken into account for the hydrological situation. The method of the cumulative deviation of the mean was applied to compare single years and seasons⁸². The average of the whole time series as a constant (c) is subtracted from each value (x_i). The results are accumulated for the timescale to be analysed (seasonal, yearly or for decades) and plotted on the original time scale⁸².

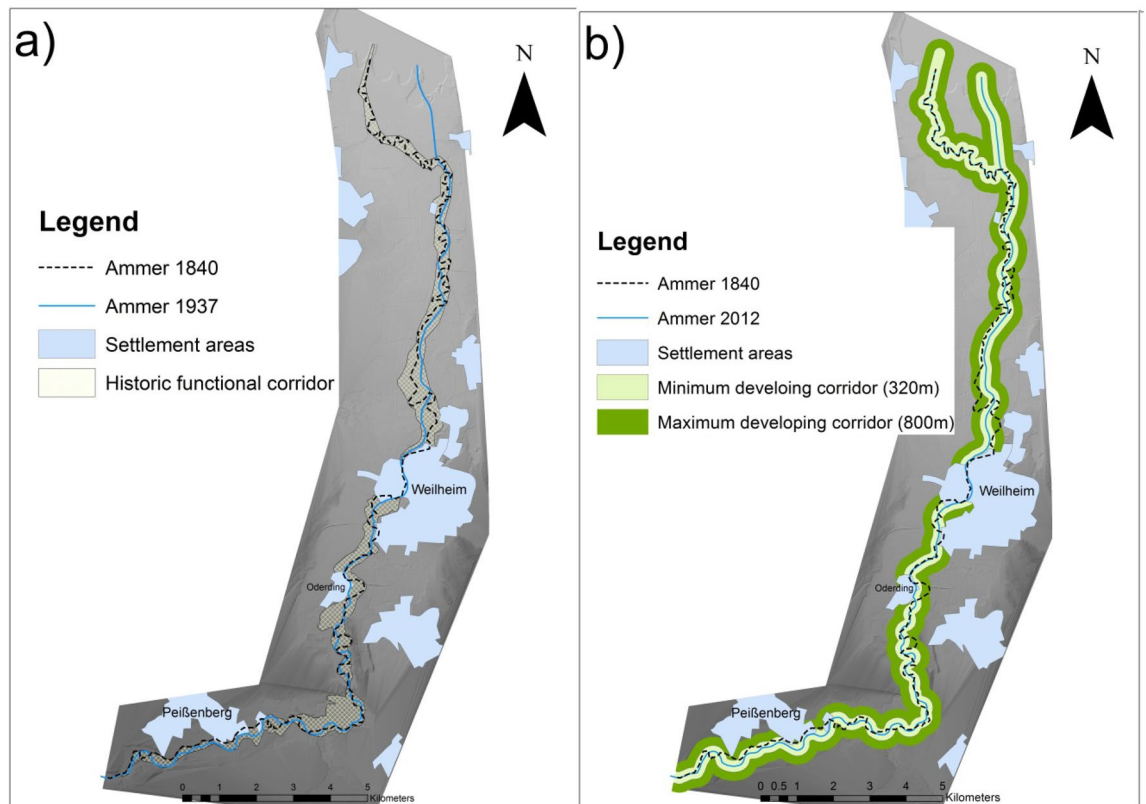


Figure 6. (a) Displaying the two main steps in changes of the river's course (1840/1937) and the historical corridor; (b) functional developing corridors (min. 320 m/max. 800 m) calculated after Dahm et al.⁴⁶ for the river bed of 2012 with settlement areas as restrictions. The winding part, found in both pictures, is the historic flow-path while the corrected path is rather straight. The maps were created with ArcMap 10.4 (<https://www.esri.de/landingpages/arcgis-10-4>).

$$S_i = \sum_{j=1}^i (x_j - c) \quad (11)$$

Based on mean daily discharge values, analyses were performed for the yearly period as well as for the seasonal discharge behaviour. The results of the analysis were used to investigate possible trends for the future extrapolation of discharge patterns for the evolving river morphology in the simulation.

The discharge values applied to the hydrodynamic-numerical model are the main characteristic discharges (1) NQ, (2) MQ, (3) HQ₁ (Table 1) and (4) bankfull discharge, which has also to be determined from the HN-model in combination with the data collected from the oxbow (historic situation). The bankfull capacity for the main channel has been defined at the height of the surrounding overbank areas and not the full capacity of the regulated section with levees.

Results

Analysis of historical corridor. Changes of the Ammer River and the morphological constraint due to anthropogenic interference over the decades are shown in Fig. 3a. Displayed in the map are two main stages of river history—which are: (1) 1,840 river course as a “near natural” state and (2) 1937 after the main construction work was done and the river had its present shape. Our analysis enabled us to identify three river sections with different characteristics. Stretch one is from Peißenberg to Polling. Here a relatively straight, smoothly bending river form can be seen. For the next section downstream from Polling to Wielenbach, the river shows a pattern of meandering/bending with stretched meanders. Further downstream the meandering type dominates, with a high winding rate along the flow path to the river mouth.

The 1937 river course is similar to the 1,840 path for the first section (Peißenberg to Polling). Here the river-bed remained mostly unchanged and seems to be stabilized. Further downstream, all bends were cut off and the river became a mostly-straight smoothly winding river along the old river bed. The final change can be seen at Fischen, where the river channel has been constructed straight into the lake. As result of the historical analysis, the corridor definition can be seen as the simplest form of determining boundaries for self-forming channel development. The corridor was defined by the 1,840 river path and the remaining oxbows. While being relatively narrow for the first section (150–200 m), it widens to its maximum width around Weilheim (750–850 m) and narrows again at the beginning of the strongly winding part (200–250 m). As shown in Fig. 6a, the new entrance

HQ ₁ [m ³ s ⁻¹]	HQ _{bf} [m ³ s ⁻¹]	HQ _{bf_hist} [m ³ s ⁻¹]	J _{Unterh} [-]	J _{Peißenb} [-]	J _{hist} [-]	D _{50Unterh} [m]	D _{50Peißenb} [m]	D _{50hist} [m]
120	280	125	0.00303	0.00335	0.00051	0.012	0.078	0.024

Table 2. Input data for the calculation of the regime theory width derived from statistics (yearly flood event discharge (HQ₁)); modeling approach (Bankfull Discharge (HQ_{bf}) and the slope J) and field samples (Sediment diameter (D)).

into the lake is completely out of this corridor. It can be seen that even though it is in an almost natural state, the river corridors vary by a factor of about 3 to 4 and at least 3 sections have to be defined.

Developing corridor: two dimensional approach. The basis of the developing corridor (after Dahm et al.⁴⁶) is the constructed riverbed width W_{constr} . The result of the analysis of 15 cross sections along the whole research area derived from the 1D hydrodynamic-numerical model showed an average value of $W_{constr} = 32$ [m] (Standard Deviation = 39 [m]) between the levees. Following the formula (Eqs. 1–3) the three buffering zones are: (1) $W_{nat_pot} = 160$ [m]; (2) $W_{dev_min} = 320$ [m]; and (3) $W_{dev_max} = 800$ [m]. As can be seen in Fig. 6b, main restrictions are found at the areas of Peißenberg, Oderding and Weilheim, with the highest impact given by settlement areas on both sides of the river.

Hydraulic: geometry equations: three dimensional approach. Assuming a natural discharge capacity of around the annual flood event HQ₁ = 120 [m³ s⁻¹] as the in-bed structure forming flood event has been chosen. For the main channel, the bankfull discharge was set to HQ_{bf} = 280 [m³ s⁻¹], the simulation with the historic riverbed showed a maximum discharge of HQ_{bf_hist} = 125 [m³ s⁻¹] and therefore this value has been used. The remaining input values for the modelling and analysis of the main channel are described in Table 2.

The results show that the slopes vary only by 0.32 [%] comparing the channel parameters between Peißenberg and Weilheim. The d₅₀ decreases from 78 to 12 [mm] in downstream direction (Fig. 2). However, the slope of the historic riverbed in the area of Unterhausen steepened by about 600 [%]. This increase of gradient is partly due to the correction of the river, and partly due to excavation to drain the land. A direct effect on the riverbed change due to increased shear stress as following up effect with this increase cannot be reported. This might be due to weirs and similar constructions.

Calculating the corridors for the assumed historical bed forming discharge (HQ₁) and for the maximum morphologically active discharge (Q_{bf}), the resulting corridors for the primary erosion at Peißenberg are 31 [m] for b_{HQ1} and 47.5 [m] for the bankfull discharge (b_{HQbf}). At Unterhausen, further downstream, the b_{HQ1} is calculated 49.6 [m] and b_{HQbf} has a predicted value of 75.8 [m]. It can be seen that the variation in discharge by the factor of $f_{discharge} = 2.3$ leads to increase of the width by the factor of $f_{width_Q} = 1.53$ for both sections. The change in slope ($f_{slope} = 1.1$) and bed material from 0.078 [m] to 0.012 [m] ($f_{sediment} = 6.5$) results in a wider corridor by the factor of $f_{width_bed} = 1.6$ at the same discharge.

For the resulting width of the channel (b_{eq,sec}) after the river type forming processes, the formula for secondary erosion after Ashmore (2001) was used. The same discharges as for the primary processes were applied. Using Eq. (5) for the upstream section at Peißenberg, the resulting widths are b_{eq,secHQ1} = 36.4 [m] and b_{eq,secHQbf} = 70.3 [m] whereas for the part downstream of Weilheim b_{eq,secHQ1} = 124.7 [m] and b_{eq,secHQbf} = 241 [m] are calculated. For the secondary equilibrium width, results showed that the influence given by bed material and slope is much higher than the influence given through the change in discharge. The discharge factor changes to $f_{width_Q} = 1.9$ and the factor for riverbed parameters to $f_{width_bed} = 3.4$. The comparison between the initial erosion and the result shows that the maximum difference between b_{HQbf} and b_{eq,secHQbf} can be found in Unterhausen with a predicted $\Delta b_{Qbf} = 165.2$ [m], while for the Peißenberg it is $\Delta b_{Qbf} = 22.8$ [m]. A similar result can be seen for Δb_{HQ1} with its maximum value of $\Delta b_{HQ1} = 75.1$ [m] in Unterhausen and the lower value of $\Delta b_{HQ1} = 5.4$ [m] at Peißenberg.

Morphological type characterisation: three dimensional approach. The morphological results can be divided into three pattern clusters as there are: (1) straight channel/slightly meandering, (2) alternating bars and (3) braided river (Fig. 7). In cluster (1), four river stretches with similar behaviour can be found. All of them are results of the morphological typisation at the area of Unterhausen. Two of them describe the on-site situation, while the other two result from the analysis of the historical pattern. This means that without any changes in cross-section (such as widening), this would be the river's "natural" form with the given boundary conditions. Thus, the Ammer River would be a straight river in this area with the parameters of today. For the historic riverbed, a straight to meandering river form is predicted. The resulting parameters X, Y and Z can be seen in Table 3 at the end of this chapter.

All of the points of the upstream section at Peißenberg are found in cluster (2). While the on-site parameters lead to results close to the threshold between straight and alternating bars, the regime width parameters lead to the result of an alternating bar river type. The diagram shows that even though the river is channelized in this area, the results for the equilibrium width and the on-site riverbed are similar.

In cluster (3) the results for the equilibrium width river for the section in Unterhausen are found in the braided river area. As opposed to the section close to Peißenberg, in Unterhausen the river types are different between the on-site situation and the forecast for the river type occurring in case of allowed erosion processes and unsecured riverbanks. While the results for the on-site parameters show a straight single channel form, the pattern for a river with equilibrium width shows a river form with a braided multichannel riverbed. For

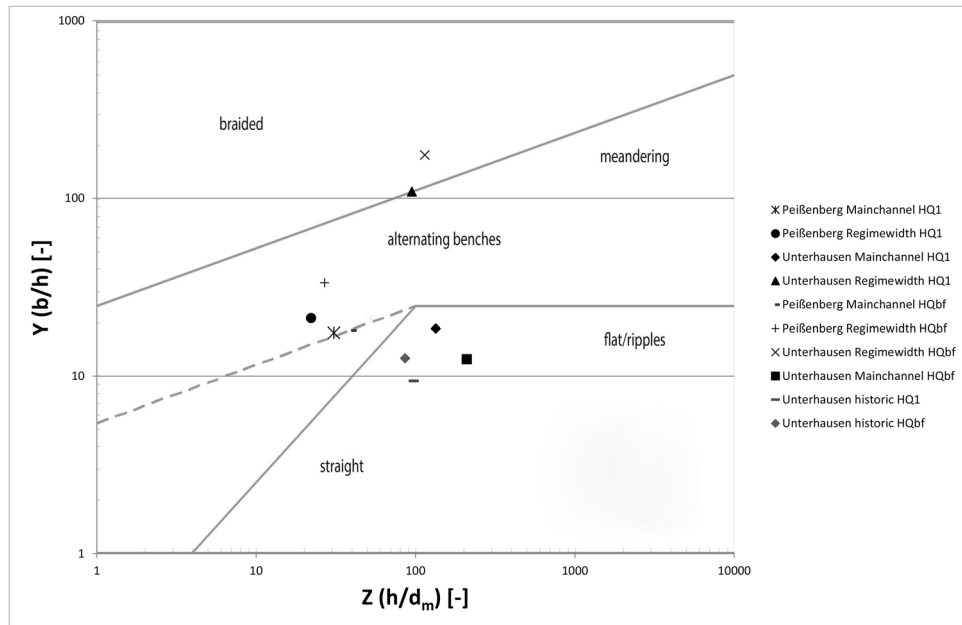


Figure 7. DaSilva-Diagram including the results for Peißenberg and Unterhausen main channel, and equilibrium width, historical.

Scenario	Peißenberg			Unterhausen		
	X	Y	Z	X	Y	Z
Q = 120 m³ s⁻¹						
On-site	538.5	17.5	30.8	2,478	18.47	134
Equilibrium	468	21.11	22.1	10,333	109	95
Q = 280 m³ s⁻¹						
On-site	718	18.1	39	2,610	12.43	134
Equilibrium	897	33.3	27	20,000	174.9	115

Table 3. X–Y–Z values calculated for HQ₁ = 120[m³ s⁻¹] and HQ_{bf} = 280[m³ s⁻¹].

discharges higher than HQ₁, it demonstrates that the braided river system will be formed. At HQ₁ or below, the probability for braiding systems is high, since the result for the river type at this discharge is at the threshold between alternating benches and braided system.

Similar to the morphological classification after DaSilva, the results for the in-bed structure analysis after Jäggi (Fig. 8) shows a single-channel with bank-forming processes for the Peißenberg section. This is valid for the actual situation given as well as for the forecast for a channel with equilibrium width. For both discharges, the results show great correlation with each other. The results for the main channel are on the border between a single thread riverbed and a riverbed with two active channels. This means that the channelled river shows a tendency to in-stream bars and islands. For the regime-width calculated, the results from DaSilva/Zarn are confirmed. While the channel structure for the bankfull discharge predicts a braided/multi-channel riverbed, the lower discharges (HQ₁) are on the threshold level between the two channel system (river with alternating bars/islands) and a braided river area. For the historic river, the diagram shows a river with a single channel and no mentionable bars. The main factor for achieving this result is the low slope, whereas for the steeper sections, a variation in X has more impact on the result.

The results show that the calculated stream power for the sections and for the historical river reached only a maximum value of 625[W m⁻¹] for the section north of Weilheim to Lake Ammersee, while the channelized river has now a maximum stream power of 9211[W m⁻¹] at Peißenberg section and 8320[W m⁻¹] at the area of Unterhausen. For the sector at Peißenberg, however, the stream power remained the same as if there had been no major changes in the river course. Thus, the stream power in the area of Unterhausen is now 13.3 times higher than it was historically, due to the increase in slope and discharge capacity of the river channel.

Bed material. The sediment samples from the main channel showed a downstream fining of grain size related to bed stability, which allows the assumption of a continuing transport (Fig. 9). Moreover, the degrada-

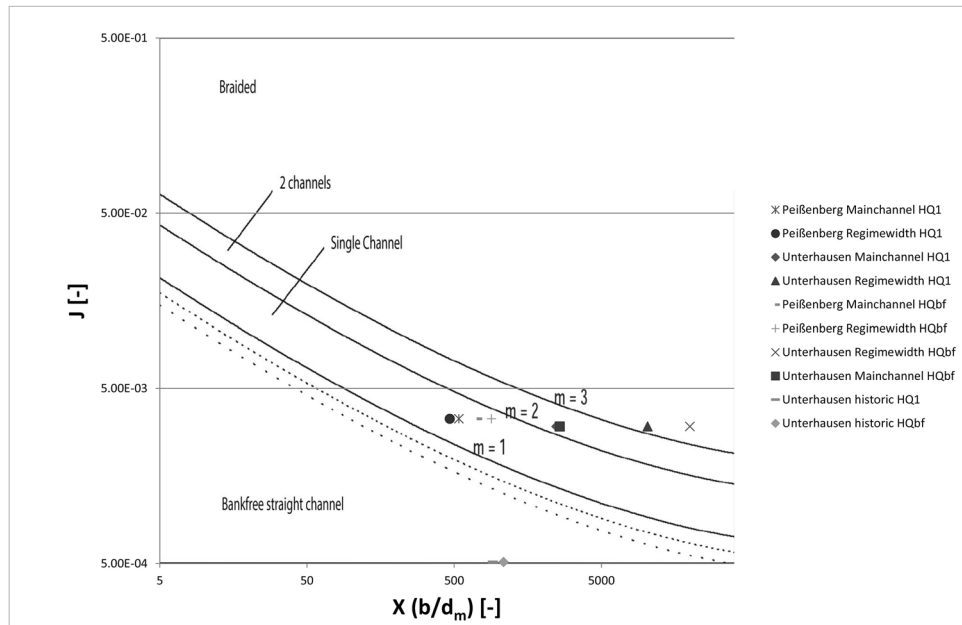


Figure 8. Diagram after Jäggi for in-stream morphology including results of calculations for Peißenberg and Unterhausen main channel, and equilibrium width.

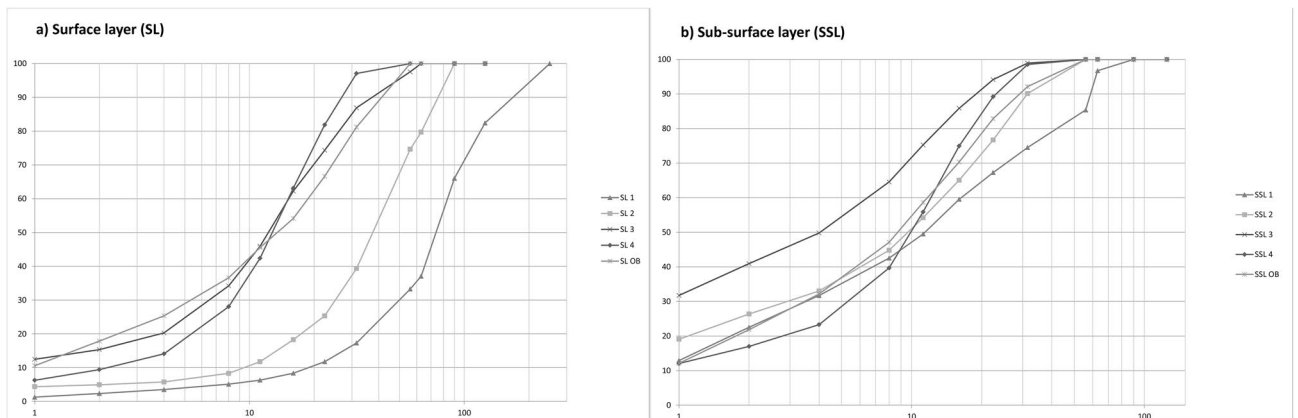


Figure 9. Grain size distribution along the research site at Ammer River (Bavaria/Germany) sampling sides (n = 5) from upstream (SL 1/SSL 1) to downstream (SL 4/SSL 4) and from the oxbow at Unterhausen (SL OB/SSL OB); x-axis shows grain size in [mm] y-axis the percentage in the samples.

tion analysis showed that even though side erosion is prevented, the riverbed remained on a stable level over recent years, meaning that a balance in sediment supply and transport is given even without the additional input of side erosion.

Hydrology. The discharge values since 1926 vary between 2.6 and 535[m² s⁻¹] as maximum daily average (peak discharge was 649[m² s⁻¹]). The average discharge used as constant value for c (Eq. 11) was calculated as 15.51[m² s⁻¹]. The cumulative deviations from the mean for the seasonal patterns also vary on an almost yearly basis in discharges and show no definite trend (Fig. 10).

Discussion

River restoration is a highly complex field for planners, which is shown by the high rate of failure in projects throughout the world^{10,26}. For restoring self-forming processes of a river, however, available space is the main criteria⁸³. In literature and governmental guidelines, various ways are found to determine the corridor which is necessary for a river to be able to develop a natural morpho-dynamic status^{6,34,46}. While Dahm et al.⁴⁶ in Germany determines the development corridor based on the present (mostly anthropogenic changed) river width and factors depending on the geological and geographical area, the French approach with the “espace de liberté”²³⁴ is based on the historically active channel and riparian area of the river, the width of the active riverbed and

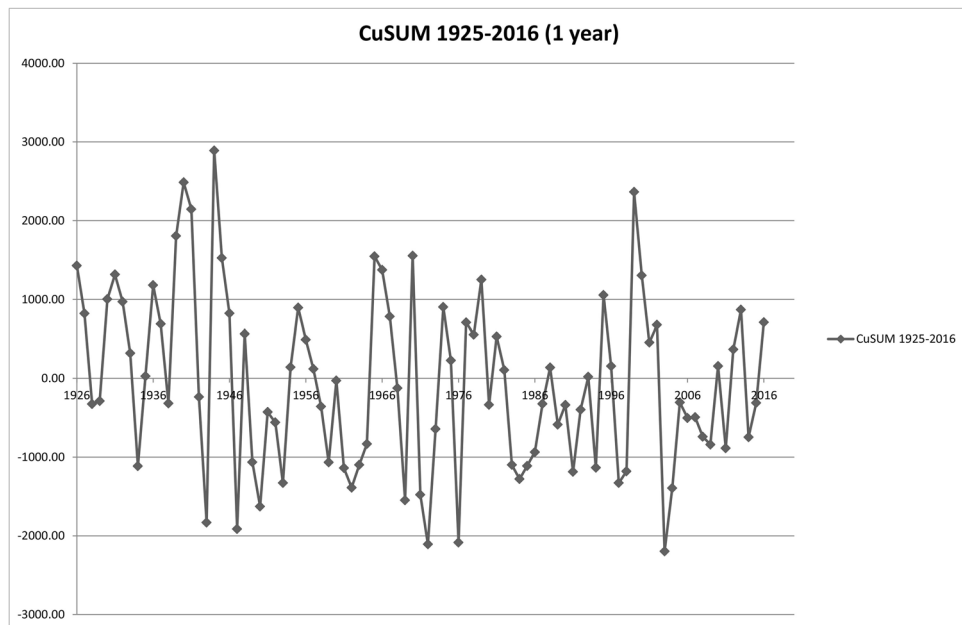


Figure 10. CuSUM yearly average, standardized to the yearly average the discharge series analysed showing no trend in long-term trend in discharge for the Ammer River catchment.

the determination of a minimum functional corridor. Dahm et al.⁴⁶ also shows a high variation between the minimum value of 320[m] and the maximum of 800[m] width for the corridor.

While the “espace de liberté” shows a variation in spatial distribution according to the historical shape, the functional corridor after Dahm is calculated for the areas with similar bed width. In case of channelized rivers, as the Ammer is, this applied approach can be used for the whole reach without any differentiation along the river’s course. As can be seen from the historical corridor, in a natural state the river width changes over the length of a river course and therefore two values which are applied on the whole stretch of a reach are not representative of the natural variation in spatial demand.

Moreover, neither system takes the on-site parameters into account. Alterations in the surrounding areas or human impacts made such as (1) increase in slope by straightening or (2) an increase in stream power due to higher maximum discharge are not considered. Even though a river needs space to develop, in settlement areas and areas with intensive agricultural use, available areas are scarce^{13,84} and former riparian areas are under human use^{37,84}. Due to this limitation, the calculation of the active channel based on the 2-D data, and the 3-D analysis of river morphology and hydraulics, was compared in the presented study. The results show that under certain circumstances (section Peißenberg) the river with its actual shape in the channelized bed is close to the morphological type based on unregulated free-flowing processes. The comparison between the actual width of the channel and the theoretical value shows that rather than the suggested minimum of 320[m] (e.g. after Dahm), a channel width of about 31[m] would be sufficient for an annual flooding (HQ_1) to have enough space for the river to be morphologically active in a natural way. A 70[m] corridor (Ashmore formula) should provide enough space for a morphologically active system. Further downstream the situation changes slightly but it can also be seen that the equilibrium width is below the calculated width after Dahm et al.⁴⁶. Here, it is predicted that the river would form a bed with a wetted area between 125 and 241[m] corridor width, while the results for the functional corridor is between 320 and 800[m]. However, the results have to be taken with care. There are also other factors to consider. Vegetation^{85,86} and erodible bank material⁶⁹, which are important drivers, are not taken into account for the calculations. Eaton and Millar (2004) pointed out that rivers with erodible bank material have a strong tendency to be under-predicted by the regime theory approach. In areas with higher bank stability, the prediction is more suitable⁸⁷. This means that if applying corridors on the river, an analysis of the erodible material in the overbank area should be done first, especially as the corridor may also be limited by constructional measurements in the overbank area.

Eaton and Millar (2004) also question the approach that predictions be made for one certain discharge value. The climate area (arid/humid) and related formative discharge (Q_{bf}) can strongly vary in their re-occurrence interval⁸⁸. There is also the given influence by climate change to discharge regimes. While changes in flow are reported throughout Europe (e.g.⁸⁹), the CuSUM-Analysis for the Ammer catchment, however, shows no trend in either direction as shown in Fig. 9. This can be said for yearly changes in discharge as well as for seasonal discharge patterns. This can be explained by the fact that besides the large weather systems (and probably changes), each smaller catchment can have its own local water cycle⁹⁰. Thus, it can be stated that no trend can be determined on a long-term basis using historical time series for either changes in the past, and for forecasting purposes.

As pointed out in Kleinhans and van den Berg⁴² the river morphology depends on a high number of factors and the interactions between them. Therefore, simplifications to measurable parameters have to be taken

into account when it comes to determination and prediction of river patterns. The analysis with two different approaches (DaSilva and Jäggi) was used for this paper as they slightly vary in their parameters. Comparing the scenarios, all results in the diagrams show good correlation for the predictions between the approaches. For the Peißenberg section, the scenarios show that the actual situation and the equilibrium width after secondary erosion are almost the same. This means that this section is, even though highly impacted with bank stabilisation and levees, still in a near-nature status concerning riverbed morphology. In this area the geological boundaries also allow the estimation of an area with high bank stability and therefore the channel width calculated can be seen as accurate⁸⁷.

The analysis of the actual stream power pointed out that the energy within the river at a bankfull discharge is currently 13.3 times higher than it was historically. These are important findings for the boundaries in river restoration, which can only be determined due the 3-D analysis of river bathymetry and the related flow hydraulics. These results underline the importance of the ‘third dimension in river restoration’. The increase in energy is given by (1) the increase in slope from historically 0.000510[m/m] to 0.00303[m/m]—and (2) the increase in discharge from $Q_{bf} = 125[\text{m}^3 \text{s}^{-1}]$ to $Q_{bf} = 280[\text{m}^3 \text{s}^{-1}]$. Here, the discharge of $280[\text{m}^3 \text{s}^{-1}]$ was already a reduced value as it should be comparable with the former natural state of the river. According to this data, it can be said that the energy potential in the research area in Unterhausen has changed its characteristics from a lowland river to a highly active system. Such analysis is missing or can’t be derived in a 2-D analysis. The high values of the main channel indicate that depending on bank stability, the erosion potential is also 13.3 times larger than it used to be in the historic river, and is too high for the development of a meandering system (e.g.⁹¹). Xu points out that the threshold level between braiding and meandering depends on stream power and D_{50} along with other factors. The historical maps show that before the straightening and regulation, the Ammer River had a strong tendency for meandering along most of its reach downstream of Weilheim (2D-analysis).

The analysis of the remaining structures in the landscape and the DEM showed the same result, but the on-site parameters lead to the result of a straight to slightly bending type confirmed by the diagram after Jäggi (3D-analysis including riverbed incision over decades). Sensitivity analyses showed that changes in D_{50} to a smaller grain size, however, are resulting in a meandering characterisation. As transport capacity is too high and hydraulic boundary conditions have been changed this is not possible. The formation of a predicted braided river reach in parts of the study sites, however, implies the availability of sediment and the continuity of the transport which applies to the research site^{92–95}.

According to the aims of the WFD, it is discussed that the river should be set back to its historic “reference condition”, which would mean to revert the Ammer River back to the historic bed. Studies about the changes in river morphology on a long-term basis show that this static approach should be reconsidered as rivers are a highly dynamic system, which changes depending on the supply of water and sediment^{96–98}. In this case it has been proved that partial restoration to a meandering river would not be successful due to the changes in the system. Rather than putting high effort into construction work to restore the historic situation, the chance should be taken to morphologically reactivate. As well as being more cost-effective, this would also bring an advantage to the whole ecological system. New succession areas for pioneer vegetation can be created, there may be available habitat for gravel-breeding birds above the water level and gravel spawning fish, which need highly active areas, can be improved, with new habitats created⁹⁹. Therefore, the approach of “reconstruction of historical rivers” should be questioned and reconsidered. Morphologically-active channels lead to high habitat diversity and therefore a larger bio-diversity on one site, while also having possible positive impacts on the flood situation.

Conclusion

Rivers in industrialized countries are under anthropogenic pressure and there is a high demand for restoration projects to reach the aims of the WFD. A high percentage of the restoration throughout the world shows little or no success from an eco-morphological point of view. According to literature, the high rate of failure is based on a shortcoming of knowledge of hydro-morphological dynamic processes and a “2-dimensional” planning. Many re-meandering projects are based on historical maps, while not taking into account that the parameters on-site have changed due to human interference. There are slope, grain size, maximum or bankfull discharge factors and therefore changes to flow depth and width of the channel and the stream power. Using the example of the Ammer River, changes in the parameters have been analysed and compared between the historical and the current situation. To derive the historical riverbed, maps from 1,840 to 2017 were geo-referenced and overlaid and additional data in the remaining sections collected. Concepts to determine the necessary corridor for morphological development for the river were compared. Systems like the “espace de liberté” from France or the development corridor from Germany are based on historical patterns and have a great variety in their values and are hard to apply in populated areas. The calculation of the regime width showed that less space for a functional riverbed would be needed and is based on the actual parameters. Therefore it is more suitable for highly impacted river systems but requires more effort on-site. Analysis of a DEM and the data collected in the main channel was used to determine the situation given, and further processed in a 1D numerical model. The comparison of the parameters showed, that for one part of the research area, parameters strongly changed and therefore the morphological type of the river changed. Especially, changes in slope, discharge capacity and stream power are crucial. While still in a near-nature state (even though regulated and channelized in the upstream part), the Ammer River would change from a single-channel meandering type to a braiding river further downstream if it were given enough space to reach equilibrium width. The example also showed that parameters can change along a river stretch and restoration concepts for one section might not be suitable for another section (especially when they change in morphological type).

These results are valid for this specific case at this one river. The methodology applied only focuses on the river morphology and does not take into account the space needed for a fully-functional riparian zone, even though the riverbed is not fully covered with water all the time and creates space for primary succession.

Received: 18 January 2020; Accepted: 14 July 2020

Published online: 04 August 2020

References

- Giller, P. S. River restoration: seeking ecological standards. Editor's introduction. *J. Appl. Ecol.* **42**, 201–207 (2005).
- Walsh, C. J. *et al.* The urban stream syndrome: current knowledge and the search for a cure. *J. N. Am. Benthol. Soc.* **24**, 706–723 (2005).
- Rosgen, D. L. in *Proceedings of the Conference on Management of Landscapes Disturbed by Channel Incision*. (ISBN 0-937099-05-8).
- Perşoiu, I. & Rădoane, M. Spatial and temporal controls on historical channel responses—study of an atypical case: Someşu Mic River, Romania. *Earth Surf. Process. Landf.* **36**, 1391–1409 (2011).
- Rohde, S., Hostmann, M., Peter, A. & Ewald, K. Room for rivers: an integrative search strategy for floodplain restoration. *Landsc. Urban Plan.* **78**, 50–70 (2006).
- Buijse, A. D. *et al.* Restoration strategies for river floodplains along large lowland rivers in Europe. *Freshw. Biol.* **47**, 889–907. <https://doi.org/10.1046/j.1365-2427.2002.00915.x> (2002).
- Fournier, M. *et al.* Flood risk mitigation in Europe: how far away are we from the aspired forms of adaptive governance?. *Ecol. Soc.* <https://doi.org/10.5751/es-08991-210449> (2016).
- Jähniß, S., Hering, D. & Sommerhäuser, M. Fließgewässer-Renaturierung heute und morgen - EG-Wasserrahmenrichtlinie, Maßnahmen und Effizienzkontrolle. *Limnologie Aktuell, Band 13* (2011). ISBN 978-3-510-53011-3.
- Lytle, D. A. & Poff, N. L. Adaptation to natural flow regimes. *Trends Ecol. Evol.* **19**, 94–100 (2004).
- Feld, C. K. *et al.* From natural to degraded rivers and back again: a test of restoration ecology theory and practice. *Adv. Ecol. Res.* **44**, 119–209 (2011).
- Schottler, S. P. *et al.* Twentieth century agricultural drainage creates more erosive rivers. *Hydrol. Process.* **28**, 1951–1961 (2014).
- Nienhuis, P. & Leuven, R. River restoration and flood protection: controversy or synergism?. *Hydrobiologia* **444**, 85–99 (2001).
- Asakawa, S., Yoshida, K. & Yabe, K. Perceptions of urban stream corridors within the greenway system of Sapporo, Japan. *Landsc. Urban Plan.* **68**, 167–182 (2004).
- Löfgren, S., Kahlert, M., Johansson, M. & Bergengren, J. Classification of two Swedish forest streams in accordance with the European union water framework directive. *Ambio* **38**, 394–400. <https://doi.org/10.2307/40390257> (2009).
- Ellwanger, G., Finck, P., Riecken, U. & Schröder, E. Gefährdungssituation von Lebensräumen und Arten der Gewässer und Auen in Deutschland. *Nat. Landsc.* **4**, 150–155 (2012).
- Moss, T. The governance of land use in river basins: prospects for overcoming problems of institutional interplay with the EU Water Framework Directive. *Land Use Policy* **21**, 85–94. <https://doi.org/10.1016/j.landusepol.2003.10.001> (2004).
- Griffiths, M. The European Water Framework Directive: an approach to integrated river basin management. *Eur. Water Manag. Online* **5**, 1–14 (2002).
- Zingraff-Hamed, A., Greulich, S., Wantzen, K. M. & Pauleit, S. Societal drivers of European water governance: a comparison of urban river restoration practices in France and Germany. *Water* **9**(3), 206. <https://doi.org/10.3390/w9030206> (2017).
- Roni, P., Hanson, K. & Beechie, T. Global review of the physical and biological effectiveness of stream habitat rehabilitation techniques. *North Am. J. Fish. Manag.* **28**, 856–890 (2008).
- Poff, N. L. & Hart, D. D. How dams vary and why it matters for the emerging science of dam removal: an ecological classification of dams is needed to characterize how the tremendous variation in the size, operational mode, age, and number of dams in a river basin influences the potential for restoring regulated rivers via dam removal. *Bioscience* **52**, 659–668. [https://doi.org/10.1641/0006-3568\(2002\)052\[0659:hvdvaw\]2.0.co;2](https://doi.org/10.1641/0006-3568(2002)052[0659:hvdvaw]2.0.co;2) (2002).
- Pulg, U., Barlaup, B. T., Sterneckner, K., Trepl, L. & Unfer, G. Restoration of spawning habitats of Brown Trout (*salmo trutta*) in a regulated chalk stream. *River Res. Appl.* **29**, 172–182. <https://doi.org/10.1002/rra.1594> (2013).
- Pedersen, M. L., Andersen, J. M., Nielsen, K. & Linnemann, M. Restoration of Skjern River and its valley: project description and general ecological changes in the project area. *Ecol. Eng.* **30**, 131–144 (2007).
- Opperman, J. J. & Merenlender, A. M. The effectiveness of riparian restoration for improving instream fish habitat in four hardwood-dominated California streams. *North Am. J. Fish. Manag.* **24**, 822–834 (2004).
- Pretty, J. *et al.* River rehabilitation and fish populations: assessing the benefit of instream structures. *J. Appl. Ecol.* **40**, 251–265 (2003).
- Pander, J. & Geist, J. The contribution of different restored habitats to fish diversity and population development in a highly modified river: a case study from the river Günz. *Water* **10**, 1202 (2018).
- Shields, F. D. Jr., Copeland, R. R., Klingeman, P. C., Doyle, M. W. & Simon, A. Design for stream restoration. *J. Hydraul. Eng.* **129**, 575–584 (2003).
- Roni, P. *et al.* A review of stream restoration techniques and a hierarchical strategy for prioritizing restoration in Pacific Northwest watersheds. *North Am. J. Fish. Manag.* **22**, 1–20 (2002).
- Hering, D. *et al.* Contrasting the roles of section length and instream habitat enhancement for river restoration success: a field study of 20 European restoration projects. *J. Appl. Ecol.* **52**, 1518–1527. <https://doi.org/10.1111/1365-2664.12531> (2015).
- Olesen, J. M. *et al.* From Broadstone to Zackenberg: space, time and hierarchies in ecological networks. *Adv. Ecol. Res.* **42**, 1 (2010).
- Wohl, E. *et al.* River restoration. *Water Resour. Res.* **41**, W10301. <https://doi.org/10.1029/2005WR003985> (2005).
- Formann, E., Egger, G., Hauer, C. & Habersack, H. Dynamic disturbance regime approach in river restoration: concept development and application. *Landsc. Ecol. Eng.* **10**, 323–337 (2014).
- Bazin, P. & Gautier, E. Un espace de liberté pour la Loire et l'Allier: de la détermination géomorphologique à la gestion/Optimum streamways for the Loire and Allier. *Revue de géographie de Lyon* **71**, 377–386 (1996).
- Dister, E. Die Bedeutung natürlicher Flufddynamik am Beispiel von Loire und Allier. *Schriftenreihe für Landschaftspflege und Naturschutz* **56**, 67–78 (1998).
- Malavoi, J., Bravard, J., Piégay, H., Hérouin, E. & Ramez, P. Détermination de l'espace de liberté des cours d'eau. *Guide Tech.* **2**, 39 (1998).
- Piégay, H., Darby, S., Mosselman, E. & Surian, N. A review of techniques available for delimiting the erodible river corridor: a sustainable approach to managing bank erosion. *River Res. Appl.* **21**, 773–789 (2005).
- Spring, F. J. *The Training of Certain Great Rivers in Northern India, So That They May Not Outflank the Works Which Span Them*. Technical paper (1903).
- Darby, S. E. & Thorne, C. R. A river runs through it: morphological and landowner sensitivities along the Upper Missouri River, Montana, USA. *Trans. Inst. Br. Geogr.* **25**, 91–107 (2000).

38. Surian, N. Effects of human impact on braided river morphology: examples from Northern Italy. In *Braided Rivers: Process, Deposits, Ecology and Management*, Vol. 36 (eds Sambrook Smith, G. H., et al.) 327–338 (International Association of Sedimentologists Special Publication, 2006).
39. Rosgen, D. L. A classification of natural rivers. *CATENA* **22**, 169–199 (1994).
40. Zingraff-Hamed, A., Greulich, S., Pauleit, S. & Wantzen, K. M. Urban and rural river restoration in France: a typology. *Restor. Ecol.* **25**, 994–1004. <https://doi.org/10.1111/rec.12526> (2017).
41. De Jalón, D. G. & Gortazar, J. Evaluation of instream habitat enhancement options using fish habitat simulations: case-studies in the river Pas (Spain). *Aquat. Ecol.* **41**, 461–474 (2007).
42. Kleinhans, M. G. & van den Berg, J. H. River channel and bar patterns explained and predicted by an empirical and a physics-based method. *Earth Surf. Proc. Land.* **36**, 721–738 (2011).
43. Schmidt, J. C., Webb, R. H., Valdez, R. A., Marzolf, G. R. & Stevens, L. E. Science and values in river restoration in the Grand Canyon. *Bioscience* **48**, 735–747 (1998).
44. Kondolf, G. M. Lessons learned from river restoration projects in California. *Aquatic Conserv. Mar. Freshw. Ecosyst.* **8**, 39–52 (1998).
45. Palmer, M. A., Menninger, H. L. & Bernhardt, E. River restoration, habitat heterogeneity and biodiversity: a failure of theory or practice?. *Freshw. Biol.* **55**, 205–222. <https://doi.org/10.1111/j.1365-2427.2009.02372.x> (2010).
46. Dahm, V. et al. (eds) *Naturschutz und Reaktorsicherheit Bundesministerium für Umwelt* (Umweltbundesamt, Dessau-Roßlau, 2014).
47. Jäggi, M. *Alternierende Kiesbänke* 286 (Versuchsanstalt für Wasserbau, Hydrologie und Glaziologie, ETH-Zürich, Zürich, 1983).
48. A.M.A.F., D. S. *Alternate Bars and Related Alluvial Processes* MSc thesis thesis, Queen's University, (1991).
49. Weilheim, W. (ed) *Wasserwirtschaftsamt Weilheim* (Weilheim, 2003).
50. Cacace, M. et al. Modelling of fractured carbonate reservoirs: outline of a novel technique via a case study from the Molasse Basin, southern Bavaria, Germany. *Environ. Earth Sci.* **70**, 3585–3602 (2013).
51. Alefs, J. & Müller, J. Differences in the eutrophication dynamics of Ammersee and Starnberger See (Southern Germany), reflected by the diatom succession in varve-dated sediments. *J. Paleolimnol.* **21**, 395–407 (1999).
52. Czymzik, M. et al. A 450 year record of spring-summer flood layers in annually laminated sediments from Lake Ammersee (southern Germany). *Water Resour. Res.* <https://doi.org/10.1029/2009WR008360> (2010).
53. Pottgieser, T. & Sommerhäuser, M. Aktualisierung der Steckbriefe der Bundesdeutschen Fließgewässertypen (2008).
54. Bueche, T. & Vetter, M. Influence of groundwater inflow on water temperature simulations of Lake Ammersee using a one-dimensional hydrodynamic lake model. *Erdkunde* **68**, 19–31 (2014).
55. Bogner, F. X. *Ammer und Amper aus der Luft: Porträt einer Flusslandschaft* (Bayerland, 2009).
56. Landwirtschaft, B. L. f. *Böden und ihre Nutzung*. <https://www.lfl.bayern.de/iab/boden/nutzung/034121/index.php?auswahl=> (2004).
57. Bayerisches Landesamt für Digitalisierung, B. u. V. & Umwelt, B. L. f. *Bayernatlas*. https://geoportal.bayern.de/bayernatlas/index.html?X=5309095.80&Y=4435954.86&zoom=9&lang=de&topic=umwe&bgLayer=atkis&layers=relief_t,40986241-934a-46e8-a24a-2c0383c5963e,4089c1ee-c6a4-40fd-8302-692d81207d9b,bb0343f9-43b6-450e-a1b5-019600eeb565&layers_visibility=true,false_fuse,true&catalogNodes=110310,110,11031 (2017).
58. Guzelj, M. <https://www.esri.de/landingpages/arcgis-10-4> (2020).
59. Umwelt, B. L. f. *Stammdaten Weilheim/Ammer*. <https://www.hnd.bayern.de/pegel/isar/weilheim-16613004/stammdaten?> (2020).
60. Umwelt, B. L. f. <https://www.hnd.bayern.de/pegel/isar/weilheim-16613004/statistik?> <https://www.hnd.bayern.de/pegel/isar/weilheim-16613004/abfluss?> (2017).
61. Online, B. L. www.bayerische-landesbibliothek-online.de/histkarten/ (2017).
62. Bayerisches Landesamt für Digitalisierung, B. u. V. & Umwelt, B. L. f. *Bayernatlas Zeitreise 1930*. https://geoportal.bayern.de/bayernatlas/index.html?zoom=7&lang=de&topic=zeitr&bgLayer=luftbild_labels&layers=relief_t,40986241-934a-46e8-a24a-2c0383c5963e,4089c1ee-c6a4-40fd-8302-692d81207d9b,bb0343f9-43b6-450e-a1b5-019600eeb565,zeitreihe_tk&layers_visibility=true,false_fuse,false,true&E=656786.72&N=5302906.13&layers_timestamp=,,,19301231&time=1930 (2017).
63. Bayerisches Landesamt für Digitalisierung, B. u. V. & Umwelt, B. L. f. *Bayernatlas Zeitreise 1941*. https://geoportal.bayern.de/bayernatlas/index.html?zoom=7&lang=de&topic=zeitr&bgLayer=atkis&layers=relief_t,40986241-934a-46e8-a24a-2c0383c5963e,4089c1ee-c6a4-40fd-8302-692d81207d9b,bb0343f9-43b6-450e-a1b5-019600eeb565,zeitreihe_tk&layers_visibility=true,false,false,true&E=662078.05&N=5303953.64&time=1941&layers_timestamp=,,,19411231 (2017).
64. Charrier, P. Flusskorridore in Frankreich—Konzept, Umsetzung, Erfahrungen. *Auenmagazin - Magazin des Auenzentrums Neuburg a.d. Donau* **03/2012** (2012).
65. Yalin, M. *River Mechanics* 219 (Elsevier, New York, 1992).
66. Ackers, P. & Charlton, F. Summar. The geometry of small meandering streams. *Proc. Inst. Civ. Eng.* **47**, 80 (1970).
67. Ashmore, P. Braiding phenomena: statics and kinetics. *Gravel Bed Rivers* **V**, 95–121 (2001).
68. Van den Berg, J. H. Prediction of alluvial channel pattern of perennial rivers. *Geomorphology* **12**, 259–279 (1995).
69. Millar, R. G. Theoretical regime equations for mobile gravel-bed rivers with stable banks. *Geomorphology* **64**, 207–220 (2005).
70. Griffiths, G. A. Stable-channel design in gravel-bed rivers. *J. Hydrol.* **52**, 291–305 (1981).
71. Mosley, M. Response of braided rivers to changing discharge. *J. Hydrol. (N. Z.)* **22**, 18–67 (1983).
72. Julien, P. Y., Shah-Fairbank, S. C. & Kim, J. *Restoration of Abandoned Channels*. Report, Colorado State University (2008).
73. Simpson, N. T., Pierce, C. L., Roe, K. J. & Weber, M. J. Boone River Watershed Stream Fish and Habitat Monitoring, IA. (2016).
74. 74Łóczy, D. et al. in *Water Resources and Wetlands. Conference Proceedings. Tulcea, Romania*. 11–13.
75. Marti, C. *Morphologie von verzweigten Gerinnen: Ansätze zur Abfluss-, Geschiebetransport- und Kolkiefenberechnung*, ETH Zurich, (2006).
76. Bockelmann, B., Fenrich, E., Lin, B. & Falconer, R. Development of an ecohydraulics model for stream and river restoration. *Ecol. Eng.* **22**, 227–235 (2004).
77. Shafroth, P. B. et al. Ecosystem effects of environmental flows: modelling and experimental floods in a dryland river. *Freshw. Biol.* **55**, 68–85 (2010).
78. Finaud-Guyot, P., Delenne, C., Guinot, V. & Llovel, C. 1D–2D coupling for river flow modeling. *C. R. Méc.* **339**, 226–234 (2011).
79. Coulthard, T. & Van De Wiel, M. Modelling river history and evolution. *Phil. Trans. R. Soc. A* **370**, 2123–2142 (2012).
80. Brunner, G. W. (ed US Army Corps of Engineering Hydrologic Engineering Center (HEC)) 2-13 (US Army Corps of Engineering, Davis, California, 2010).
81. Dietrich, W. E., Kirchner, J. W., Ikeda, H. & Iseya, F. Sediment supply and the development of the coarse surface layer in gravel-bedded rivers. *Nature* **340**, 215–217 (1989).
82. Jessop, B. & Harvie, C. A CUSfRd Analysis of Discharge Patterns by a Hydroelectric Dam and Discussion of Potential Effects on the Upstream Migration of American Eel Elvers. (2003).
83. Lehmann, B., Bernhart, H.-H. & Nestmann, F. *Hydraulik naturnaher Fließgewässer* (Universität Karlsruhe (TH) Institut für Wasser und Gewässerentwicklung, Karlsruhe, 2005).
84. Nakamura, K., Tockner, K. & Amano, K. River and wetland restoration: lessons from Japan. *BioScience* **56**, 419–429 (2006).
85. Nanson, G. C. & Knighton, A. D. Anabranching rivers: their cause, character and classification. *Earth Surf. Proc. Landf.* **21**, 217–239 (1996).
86. Collins, B. D. & Montgomery, D. R. Forest development, wood jams, and restoration of floodplain rivers in the Puget Lowland, Washington. *Restor. Ecol.* **10**, 237–247 (2002).

87. Eaton, B. C. & Millar, R. G. Optimal alluvial channel width under a bank stability constraint. *Geomorphology* **62**, 35–45 (2004).
88. Eaton, B. & Millar, R. Predicting gravel bed river response to environmental change: the strengths and limitations of a regime-based approach. *Earth Surf. Proc. Landf.* **42**, 994–1008 (2017).
89. Lobanova, A. *et al.* Hydrological impacts of moderate and high-end climate change across European river basins. *J. Hydrol. Reg. Stud.* **18**, 15–30. <https://doi.org/10.1016/j.ejrh.2018.05.003> (2018).
90. Rice, J. S., Emanuel, R. E. & Vose, J. M. The influence of watershed characteristics on spatial patterns of trends in annual scale streamflow variability in the continental US. *J. Hydrol.* **540**, 850–860 (2016).
91. Xu, J. Comparison of hydraulic geometry between sand-and gravel-bed rivers in relation to channel pattern discrimination. *Earth Surf. Process. Landf. J. Br. Geomorphol. Res. Group* **29**, 645–657 (2004).
92. Bristow, C. & Best, J. L. Braided rivers: perspectives and problems. *Geol. Soc. Lond. Spec. Publ.* **75**, 1–11 (1993).
93. Alabyan, A. M. & Chalov, R. S. Types of river channel patterns and their natural controls. *Earth Surf. Process. Landf. J. Br. Geomorphol. Res. Group* **23**, 467–474 (1998).
94. Ashmore, P. E. How do gravel-bed rivers braid?. *Can. J. Earth Sci.* **28**, 326–341 (1991).
95. Ferguson, R. Understanding braiding processes in gravel-bed rivers: progress and unsolved problems. *Geol. Soc. Lond. Spec. Publ.* **75**, 73–87 (1993).
96. Scorpio, V. *et al.* Channel changes of the Adige River (Eastern Italian Alps) over the last 1000 years and identification of the historical fluvial corridor. *J. Maps* **14**, 680–691 (2018).
97. Comiti, F. How natural are Alpine mountain rivers? Evidence from the Italian Alps. *Earth Surf. Proc. Land.* **37**, 693–707 (2012).
98. Marchese, E., Scorpio, V., Fuller, I., McColl, S. & Comiti, F. Morphological changes in Alpine rivers following the end of the Little Ice Age. *Geomorphology* **295**, 811–826 (2017).
99. Carolli, M. & Pusch, M. HyMoCARES project WPT1 Ecosystem Services (ES) assessment framework D. T1. 2.1-Report on functional dependencies of ES on river hydromorphology. (2018).

Author contributions

M.G. is the main author of this article. C.H. and G.E. contributed to the systematic approach as well as to the modelling part. All authors reviewed the manuscript, confirm the content of this paper.

Competing interests

The authors declare no competing interests.

Additional information

Correspondence and requests for materials should be addressed to M.G.

Reprints and permissions information is available at www.nature.com/reprints.

Publisher's note Springer Nature remains neutral with regard to jurisdictional claims in published maps and institutional affiliations.



Open Access This article is licensed under a Creative Commons Attribution 4.0 International License, which permits use, sharing, adaptation, distribution and reproduction in any medium or format, as long as you give appropriate credit to the original author(s) and the source, provide a link to the Creative Commons license, and indicate if changes were made. The images or other third party material in this article are included in the article's Creative Commons license, unless indicated otherwise in a credit line to the material. If material is not included in the article's Creative Commons license and your intended use is not permitted by statutory regulation or exceeds the permitted use, you will need to obtain permission directly from the copyright holder. To view a copy of this license, visit <http://creativecommons.org/licenses/by/4.0/>.

© The Author(s) 2020